

Outlined Stars



ST-O 1
Trenton, NJ 9/13/1849



ST-O 1



ST-O 2
Shirleysburg, PA 1851-57



ST-O 2A [USCC 3136]
1861



ST-O2B
1861



ST-O 3
Paper Mill Village, NH 1861



ST-O 3A
1861



ST-O 3B
Lone Rock, WI 1861



double strike?

Outlined Stars



ST-O 3B



ST-O 3C
Helena, Montana Territory
11/28/1869



ST-O 3D
Cooperstown, NY
11/1/1867



ST-O 4
Kelley's Island, OH 1861



ST-O 5
Gloucester, MA 1861



ST-O 5A
Canton, PA 1863

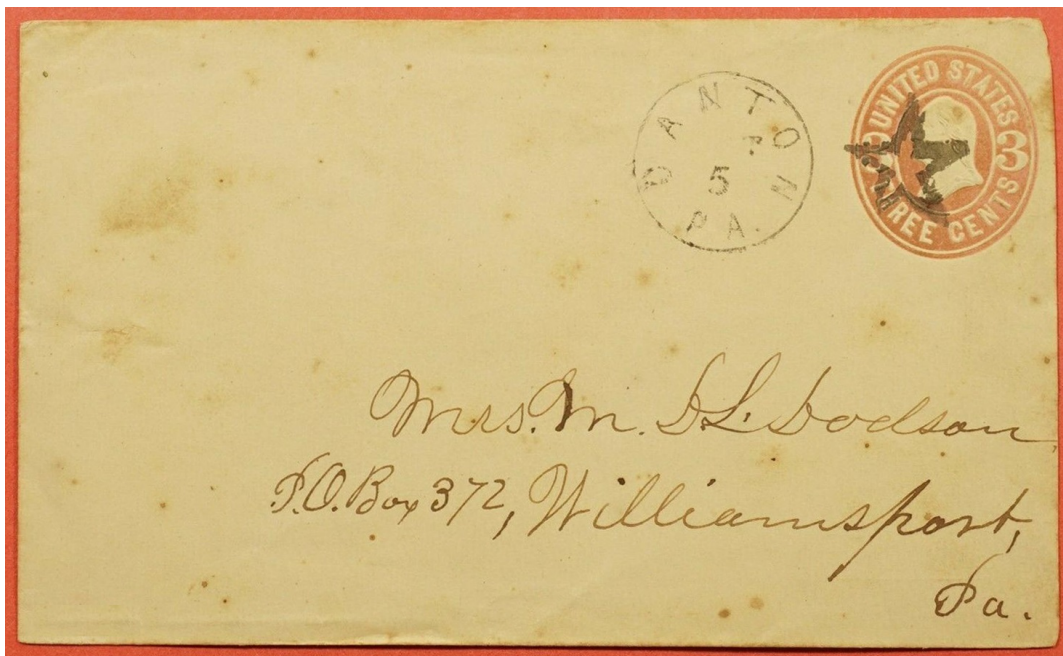


ST-O 3C

Outlined Stars



Outlined Stars



ST-O 5A



ST-O 6
1861



ST-O 7
Neenah, WI 1861



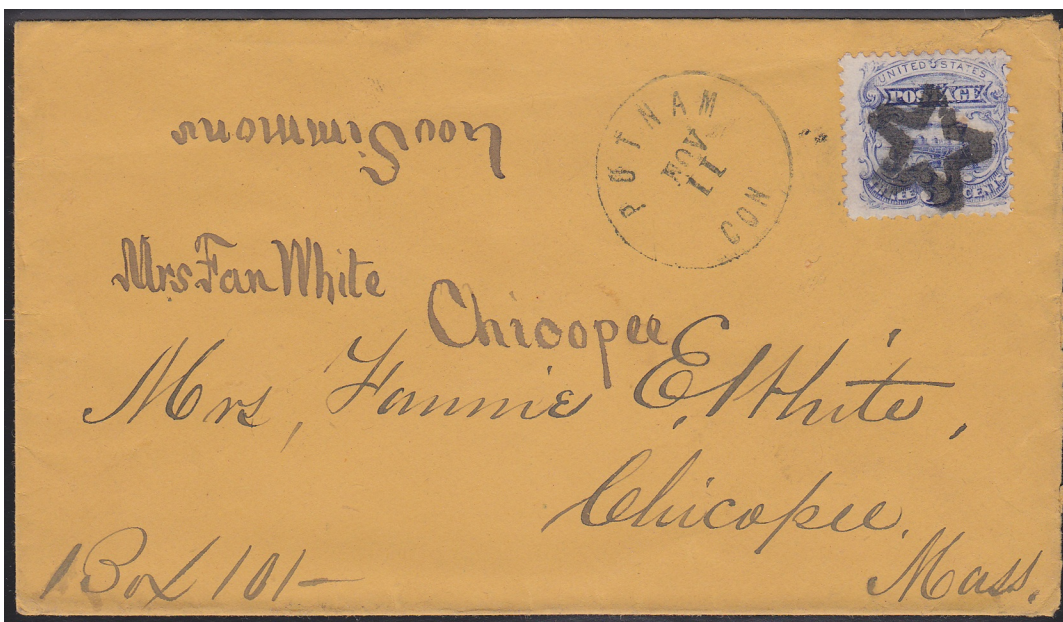
ST-O 7A
Putnam, CT [] 11/11/1869



ST-O 8 blue
[Simpson pg143-190]
Munsonville, NH [] 1861

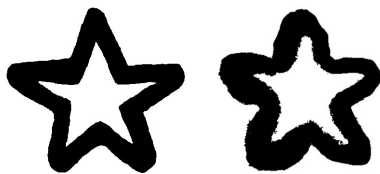


ST-O 8A
[Simpson pg153-330]
Catlett, VA



ST-O 7A

Outlined Stars



ST-O 9 [USCC 3139]

Fort Wayne, IN 5/30/1863-5/30/1865



61-O-15



61-O-15



61-O-15

Outlined Stars



ST-O 9



ST-O 9



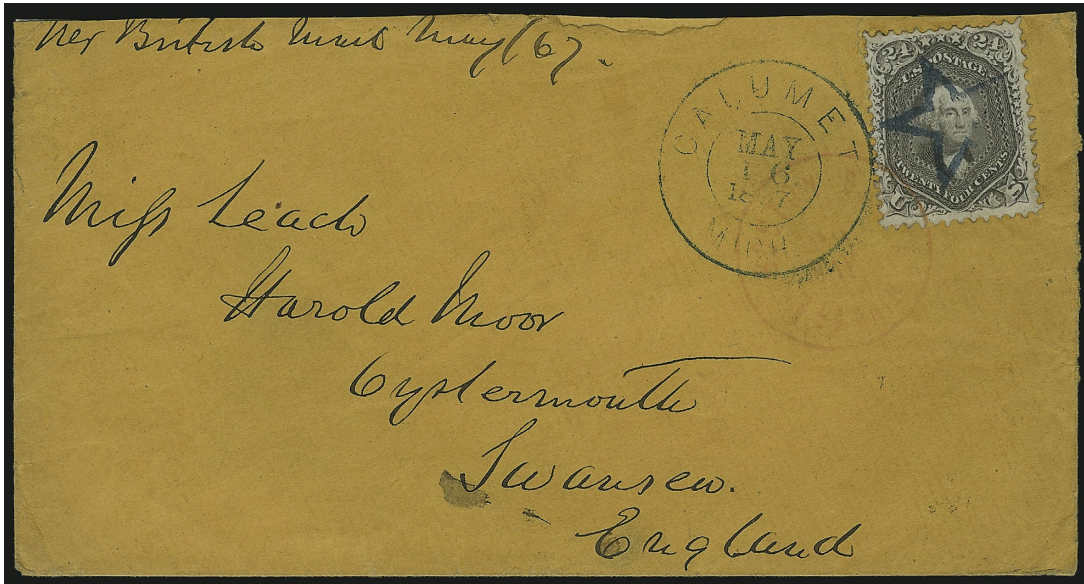
ST-O 10
Painville, CT □ 1861



ST-O 10A black, blue
Calumet, MI □ 3/26/1867



ST-O 10B
New Hamburg, NY
□ 6/8/1869-11/29/1869



ST-O 10A



ST-O 10B



ST-O 10B

Outlined Stars



ST-O 10C
1863

NEED SCAN



ST-O 10E
1861



ST-O 10F
Alleghany, PA 5/1/1865



ST-O 10G
North Pembroke, MA 12/2/1868



To
Miss Lucy Ann Brooks,
National Hotel,
Richfield Springs

ST-O 10D



Miss A. C. Stearns,
Bedford

ST-O 10D



Mrs. Carlos Pease
Alford - Berkshire Co.
Massachusetts

ST-O 10D



ST-O 10F



ST-O 10G

Outlined Stars

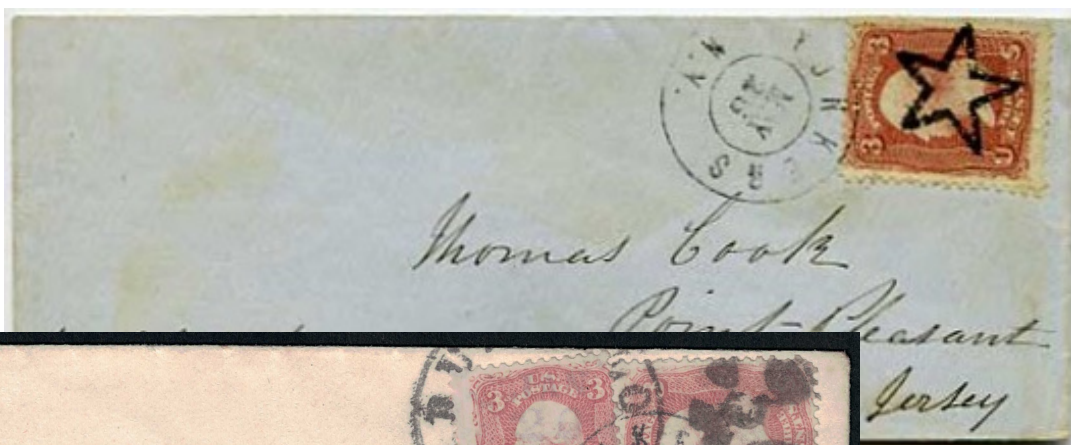


15mm wide



ST-O 11 [USCC 3131]

Yonkers, NY 1/27/1862-8/26/1865 [previously reported as a precancel, but is a post-cancelling device]



ST-O 11



ST-O 11 & PN-F 20



ST-O 11



ST-O-11

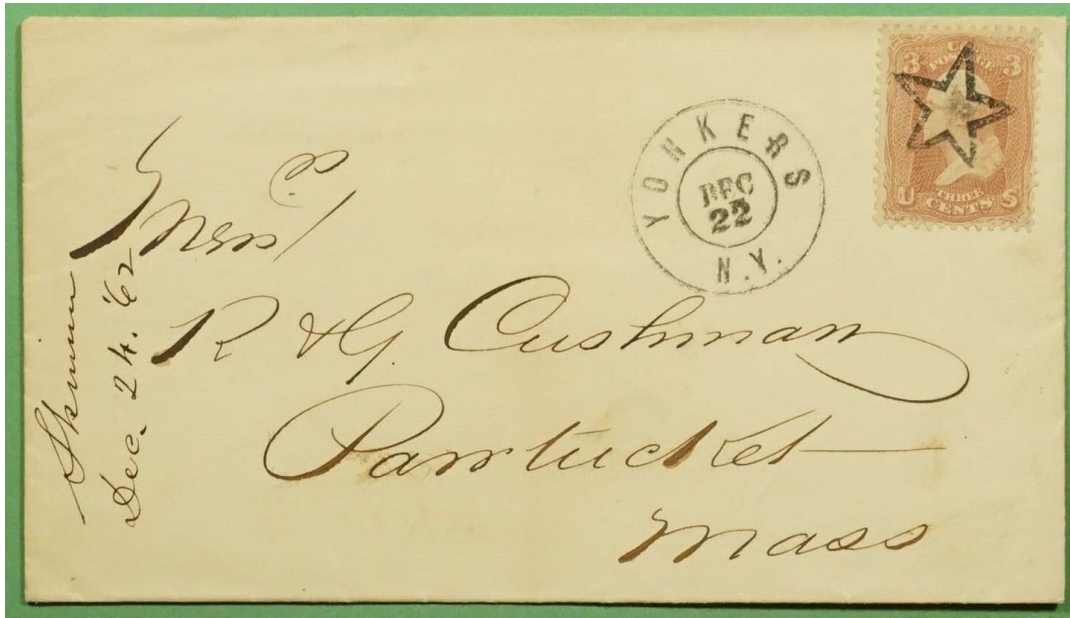


ST-O-11




ST-O-11





ST-O 11

Outlined Stars

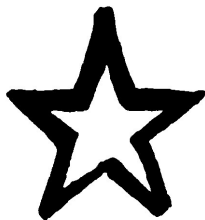
 <p>ST-O 11A [Simpson pg151-306] Providence, RI</p>	 <p>17mm wide ST-O 11B [USCC 3127] 1861</p>	 <p>asymmetrical ST-O 12 Dracut, MA <input type="checkbox"/> 1861</p>	 <p>ST-O 12A [Simpson pg151-313] McKinney, TX</p>	 <p>21.5mm wide ST-O 12B [USCC 3129] Plainville, CT <input type="checkbox"/> 1861</p>
---	---	---	--	---



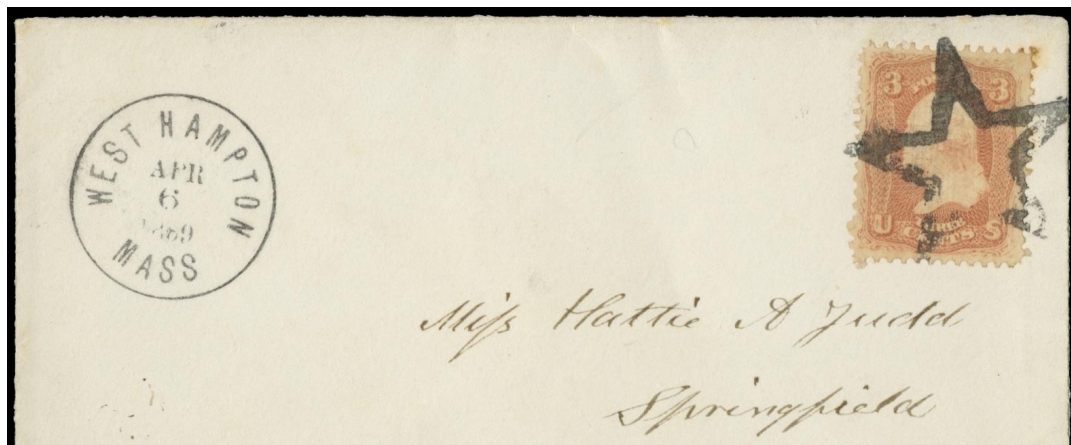
ST-O 12B

 <p>25mm wide ST-O 12C [USCC 3130] 1861</p>	 <p>ST-O 12D 1867</p>	 <p>ST-O 13 Pittsburgh, PA <input type="checkbox"/> 1867</p>	
---	---	--	--

Outlined Stars



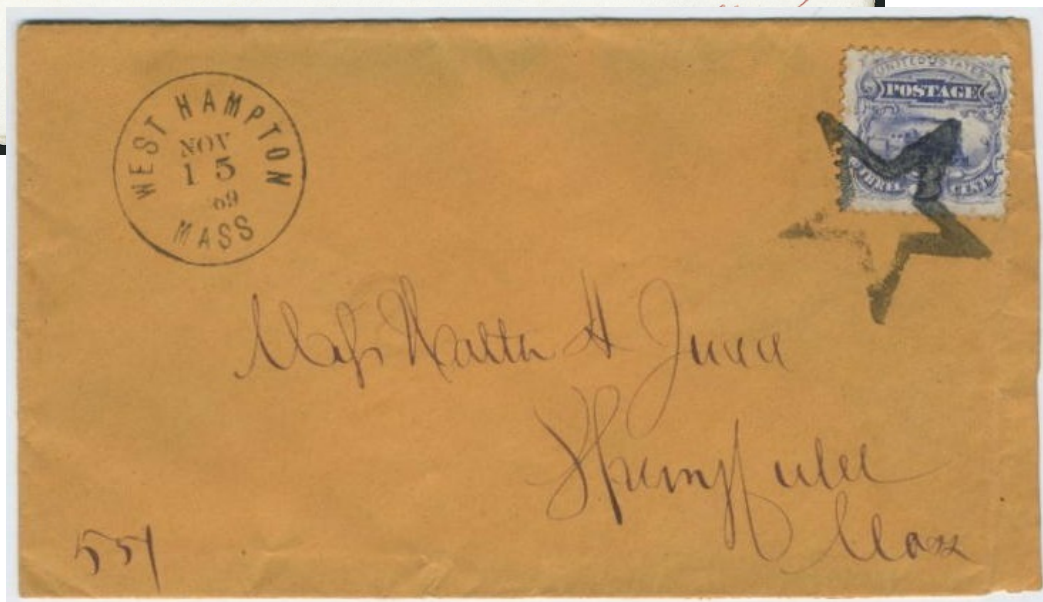
ST-O 14
Westhampton, MA 4/6/1869-8/22/1870



ST-O 14



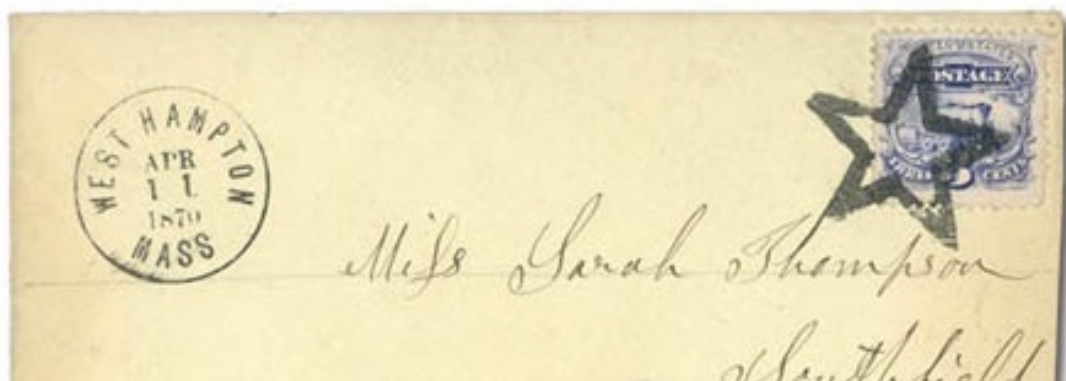
ST-O 14



ST-O 14



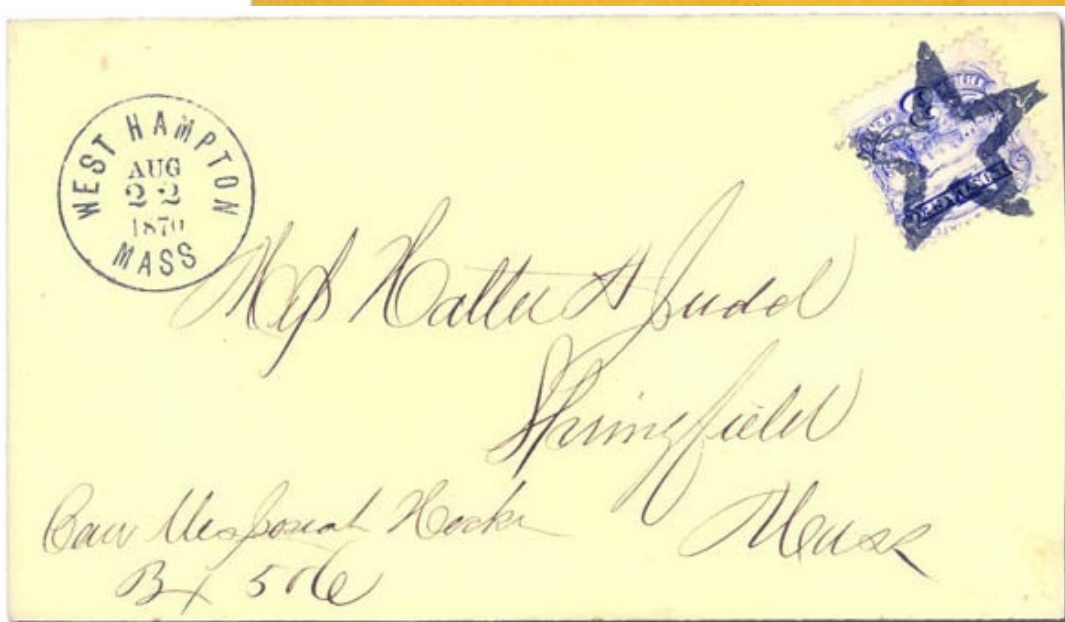
ST-O 14



ST-O 14

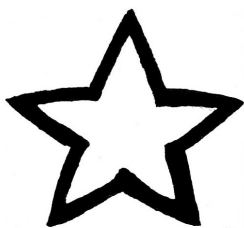


ST-O 14



ST-O 14

Outlined Stars



ST-O 14A blue
1861



ST-O 15
Lansing, MI 1869



ST-O 15A
Prairie Lee, TX 2/22/1870



ST-O 15A (approximately 75% original size)



ST-O 15B
1861



ST-O 15C
McIndoes Falls, VT 1861



ST-O 16
Bonville, VT 1869



ST-O 16A
1861

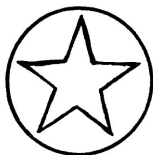


ST-O 15C

Outlined Stars



ST-O 17
Morris, IL 7/7/1862



19mm diameter

ST-O 17A [USCC 3158]
Rapid Station, VA 1861

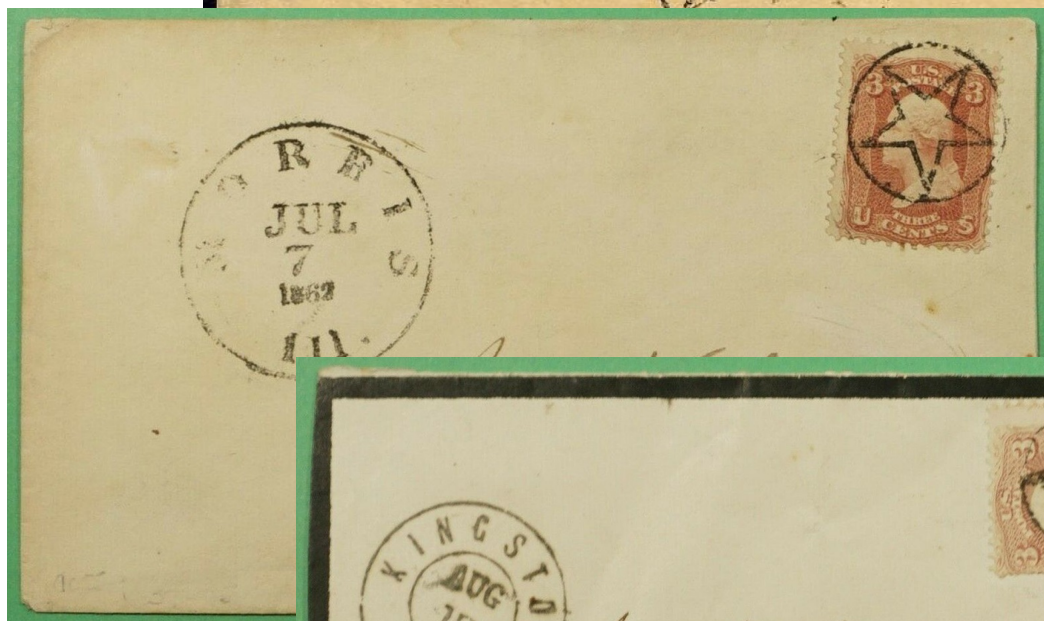


19mm diameter

ST-O 17B
Kingston, NY 1861



ST-O 17



ST-O 17



ST-O 17B

Outlined Stars



compare with ST-D 49

ST-O 18 [USCC 3165]
Ludlow, VT 1861



ST-O 18



ST-O 18



ST-O 18

Outlined Stars



ST-O 18

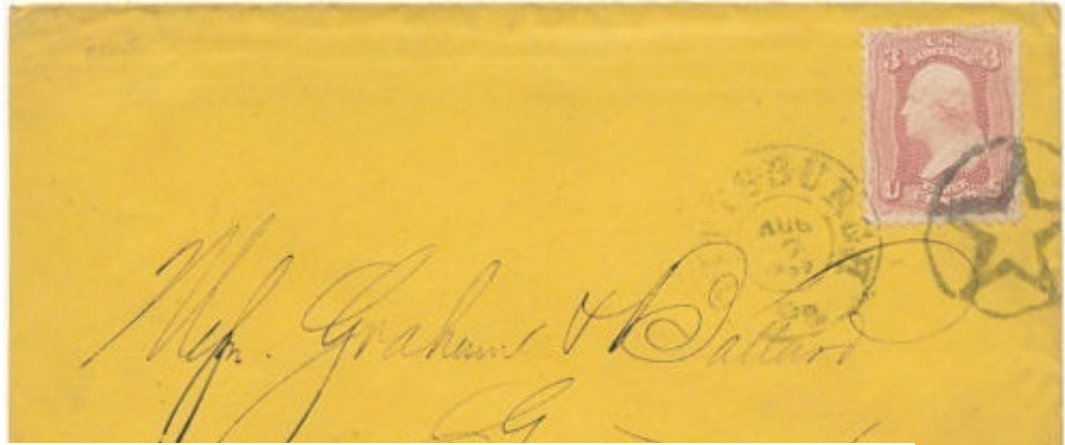


ST-O 18A
Pittsburgh, PA 1857-1861

Outlined Stars



ST-O 18B [USCC 3160]
Pittsburgh, PA 1857-8/13/1864



ST-O 18B



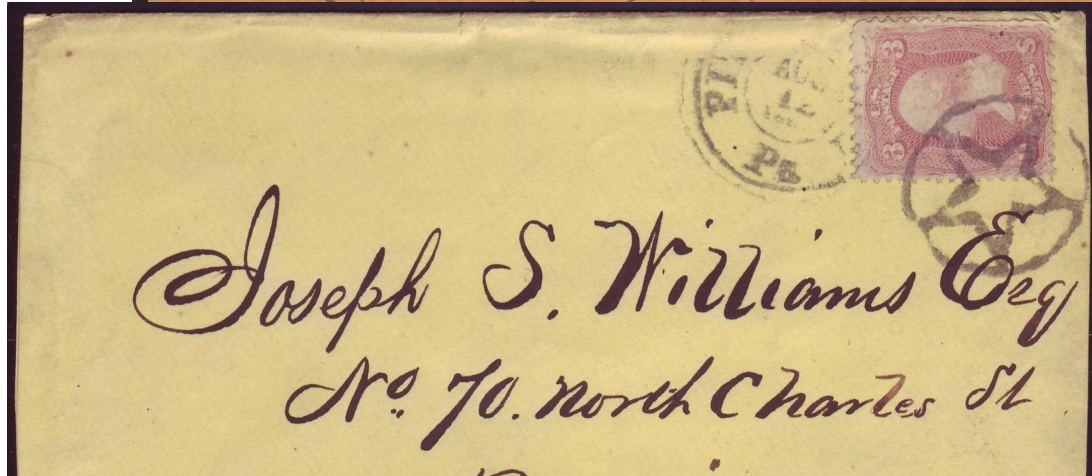
ST-O 18B



ST-O 18B



ST-O 18B



ST-O 18B



ST-O 18B



ST-O 18B

Outlined Stars

NEED SCAN

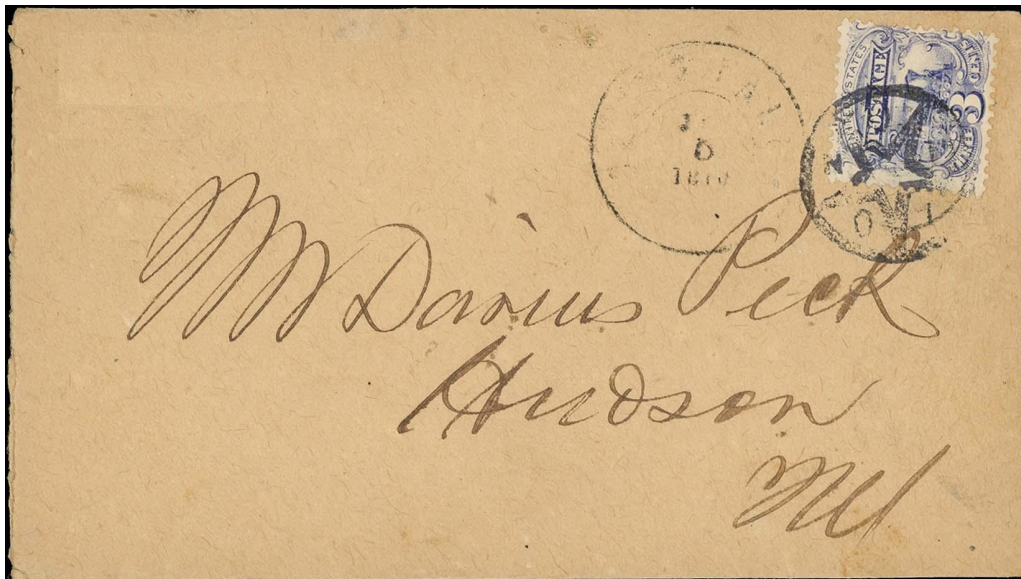


ST-O 18C

Glens Falls, NY 1/5/1870

ST-O 19

Taunton, MA 2/29/1865



ST-O 18C



ST-O 19

Outlined Stars



ST-O 20
Norridgewock, ME 1867-1869



ST-O 20A
Middle Haddam, CT 1861



*S. S. Thompson Esq.
Somerset R. R.
West Waterville
Maine*

ST-O 20



*Simon J. Smith Esq
Denver
Colorado,*

ST-O 20A

ST-O 20A

Outlined Stars



ST-O 20B blue [USCC 3164]
1861



ST-O 20C [USCC 3175]
1861



ST-O 20D
Schooleys Mountain, NJ
1861



ST-O 20E
Croton Falls, NY 1861



ST-O 20D



ST-O 20E



ST-O 20E



ST-O 21

New York, NY 12/21/1866-1/14/1867



Messrs Cassin Bros & Co
Batterville

ST-O 21



Mr. Wm. P. White
Pendleton Hill

for Co
New York

ST-O 21



Chas. Tower Esq
Exeter
N. H.

1867

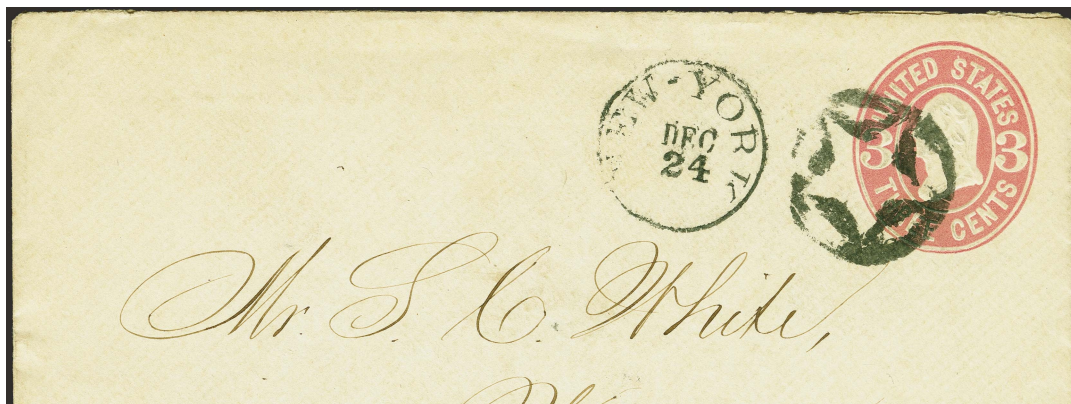
ST-O 21

Outlined Stars

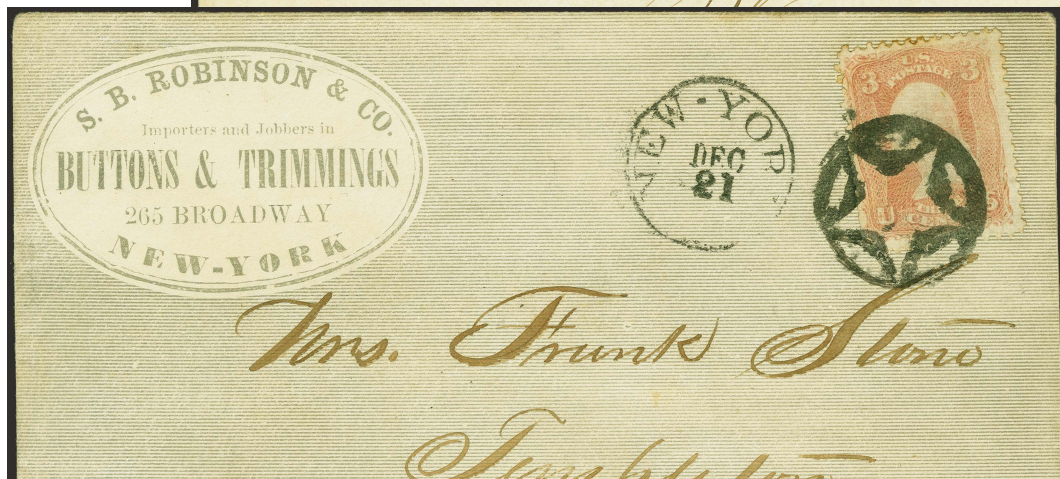


ST-O 22

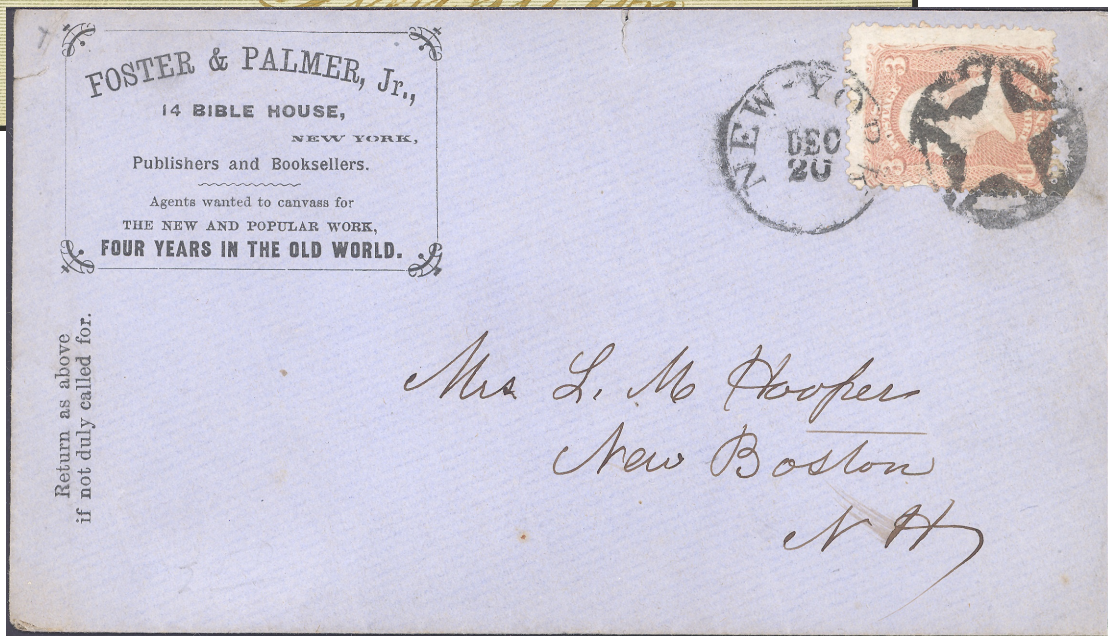
New York, NY 12/20/1866-12/24/1866



ST-O 22



ST-O 22



ST-O 22


Return as above if not duly called for.

FOSTER & PALMER, Jr.,
14 BIBLE HOUSE,
NEW YORK,
Publishers and Booksellers.
Agents wanted to canvass for
THE NEW AND POPULAR WORK,
FOUR YEARS IN THE OLD WORLD.

Mrs. L. M. Hooper
New Boston
N.H.

Outlined Stars



ST-O 22A
Chester, VT  1861



ST-O 22A

Outlined Stars



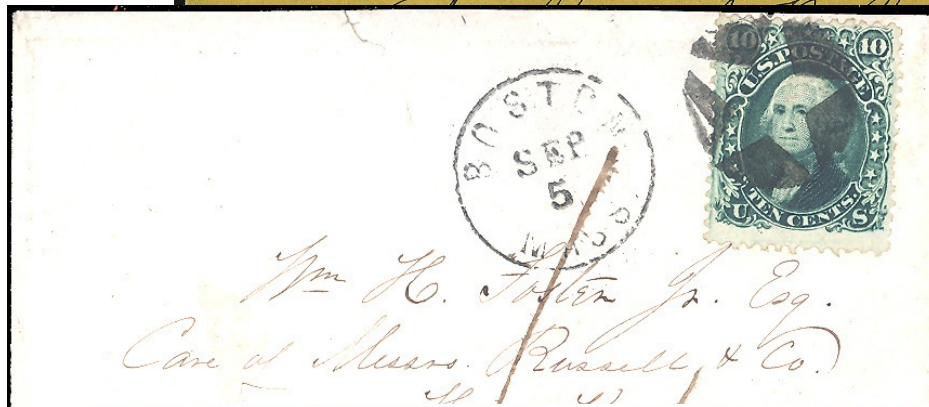
20mm diameter



ST-O 23 [USCC 3089; Blake-Davis 1055]
Boston, MA 1861-6/20/1867



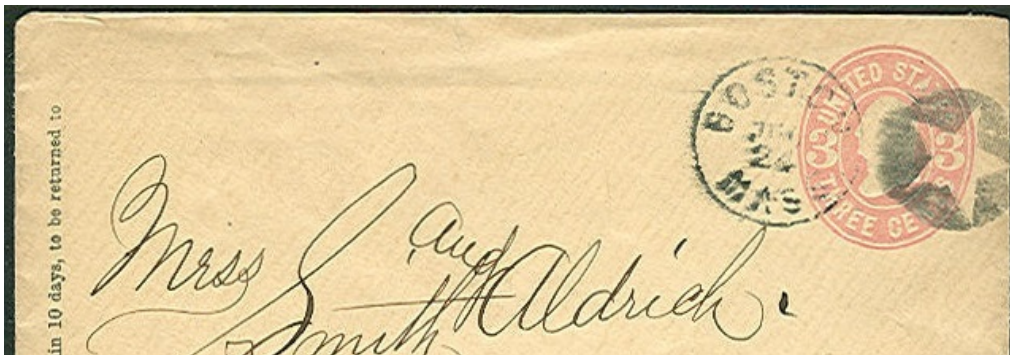
ST-O 23



ST-O 23



ST-O 23



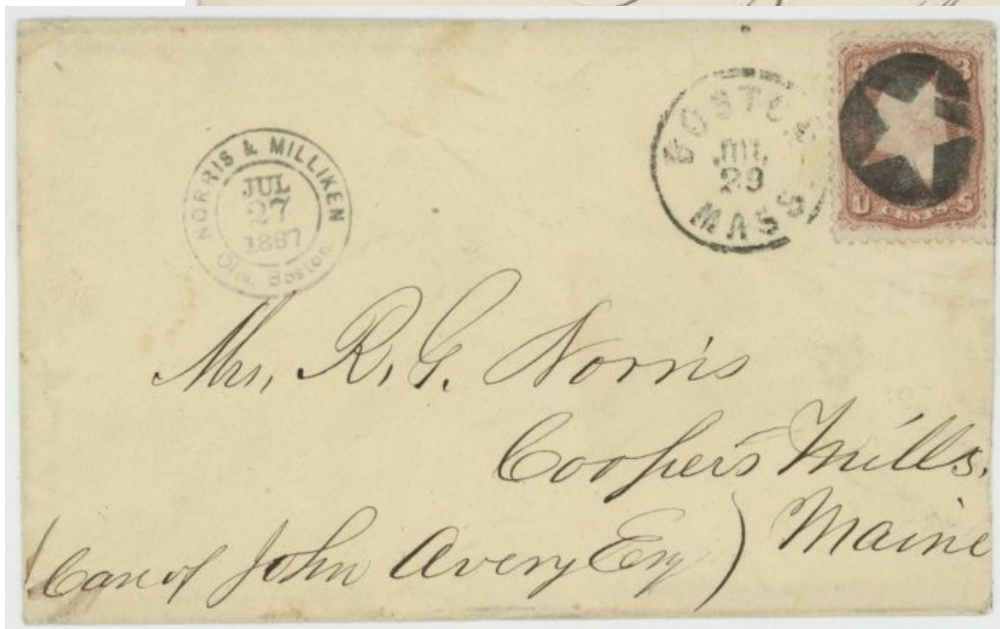
ST-O-23



ST-O-23



ST-O-23



ST-O-23

Outlined Stars



17-18mm diameter



ST-O 23A
Quincy, IL 1863



ST-O 23AA
Richmond, VA 1863

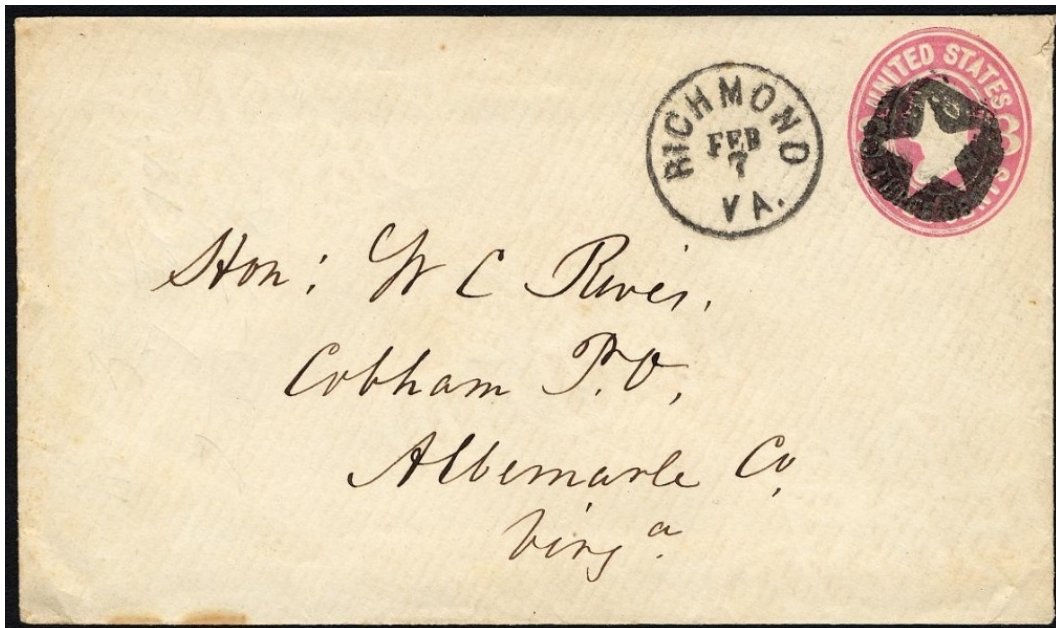


ST-O 23A



ST-O 23A

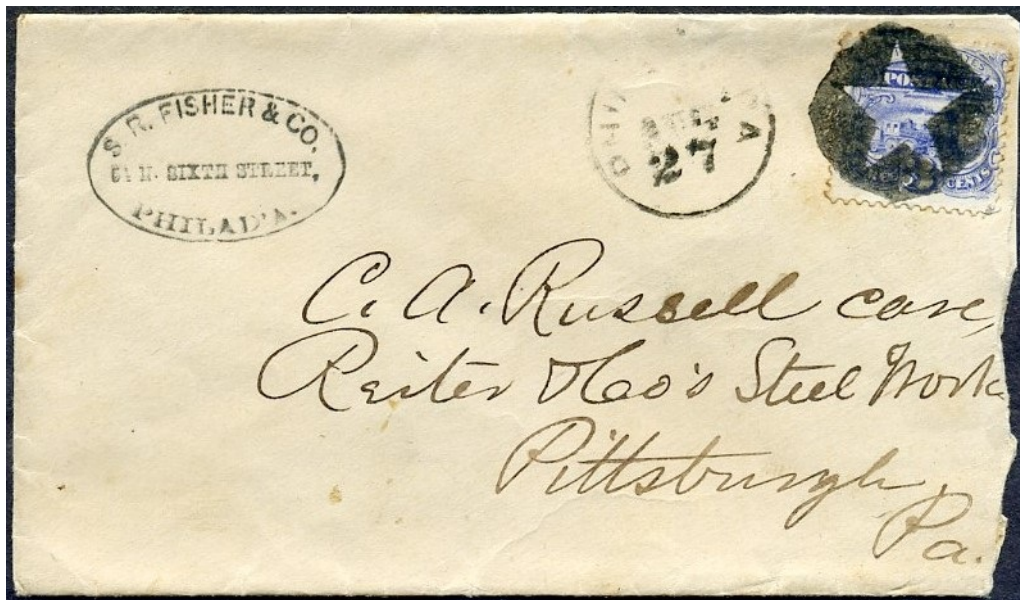
Outlined Stars



ST-O 23AA



ST-O 23AAA
Philadelphia, PA 8/27/1869



ST-O 23AAA

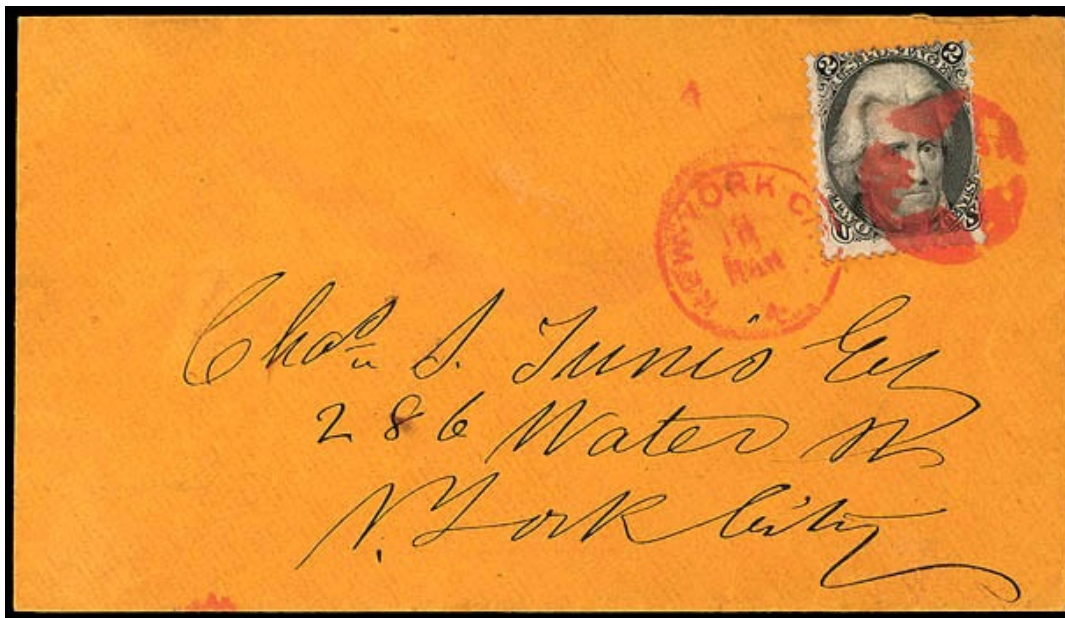
Outlined Stars



ST-O 23B red
New York, NY 1863



ST-O 23BB blue
1862



ST-O 23B



ST-O 23C (Cole STN-12)
Weston, VT(?) 1861



21mm diameter

ST-O 23D
Boston, MA 1865



ST-O 23D

Outlined Stars

<p>ST-O 23E Nebraska City, NE □ 1863</p>	<p>ST-O 23F Chilicothe, OH □ 6/23/1870</p>	<p>ST-O 23G East Vassalboro, ME □ 1861</p>	<p>ST-O 23H Brookline, MA □ 1861</p>	<p>ST-O 24 Prospect, OH 1861</p>

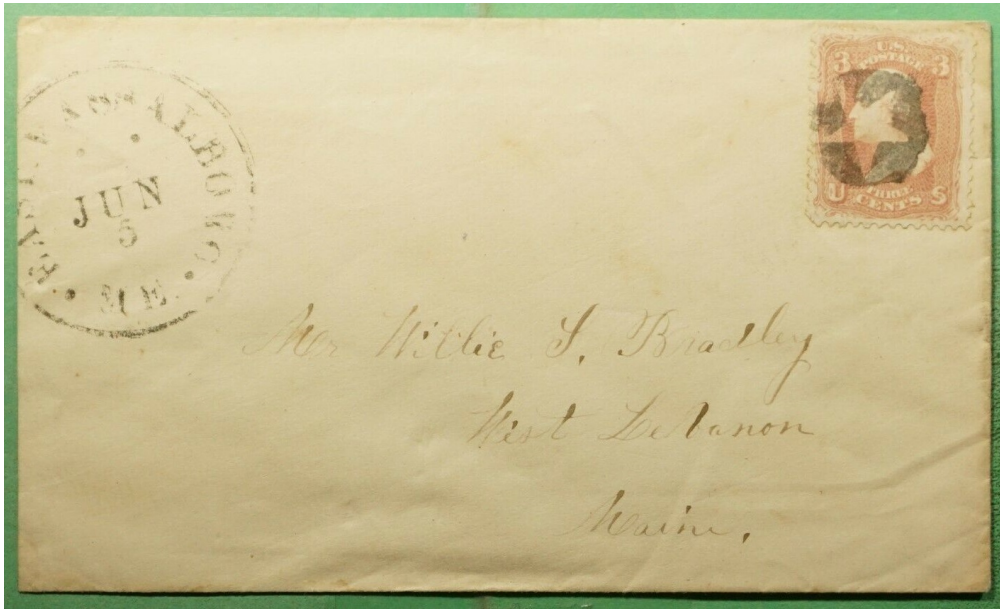


ST-O 23E

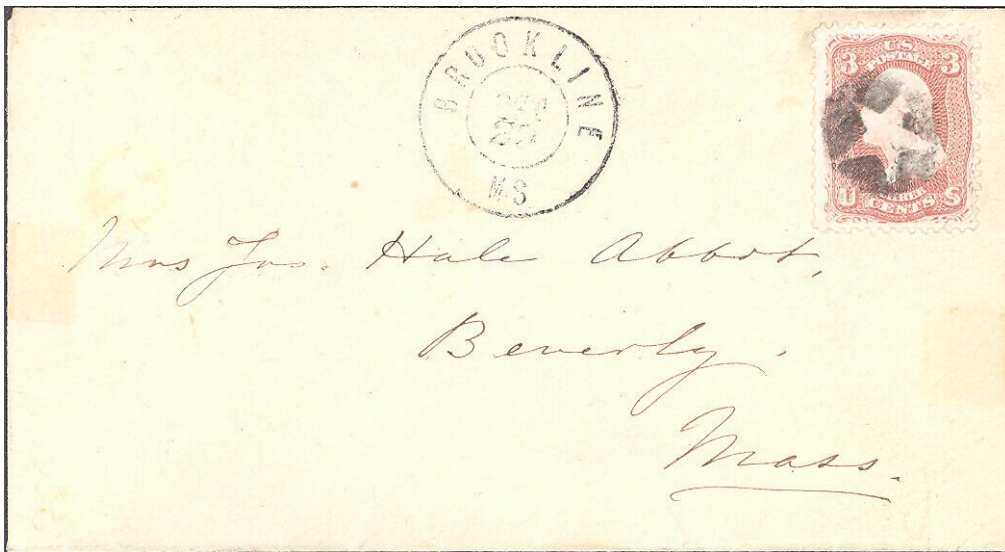


ST-O 23F

Outlined Stars



ST-O 23G

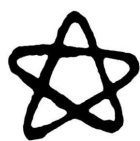


ST-O 23H



ST-O 37
1851

Outlined Stars



ST-O 38 [USCC 61; Simpson pg139-138]
South Gardner, MA 1857



ST-O 38A [USCC 3152; Simpson pg139-139]
1857



ST-O 38



ST-O 38



ST-O 38



ST-O 39
South Royalton, MA



ST-O 40 [Simpson pg129-7]
Downieville, CA 1861

Outlined Stars



ST-O 25
Windsor Locks, CT □ 1861



ST-O 25A
Middleborough, MA □
2/7/1870



ST-O 26
Shepardstown, WV □
2/16/1870



ST-O 27
Watkins, NY □ 8/24/1869



ST-O 27A [USCC 3392]
Vicksburg, MS □ 3/31/1870



ST-O 25A

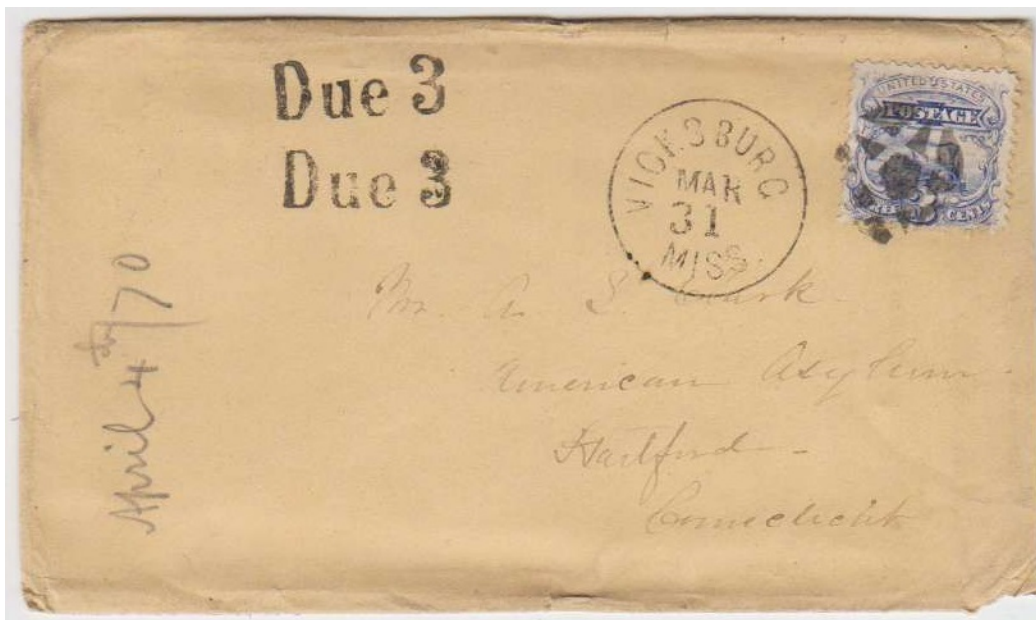


ST-O 26



ST-O 27

Outlined Stars



ST-O 27A



ST-O 27B
1869



ST-O 27C
1869



ST-O 27D
1869



ST-O 27E
1869



ST-O 27F
New Haven, CT 1/13/1870

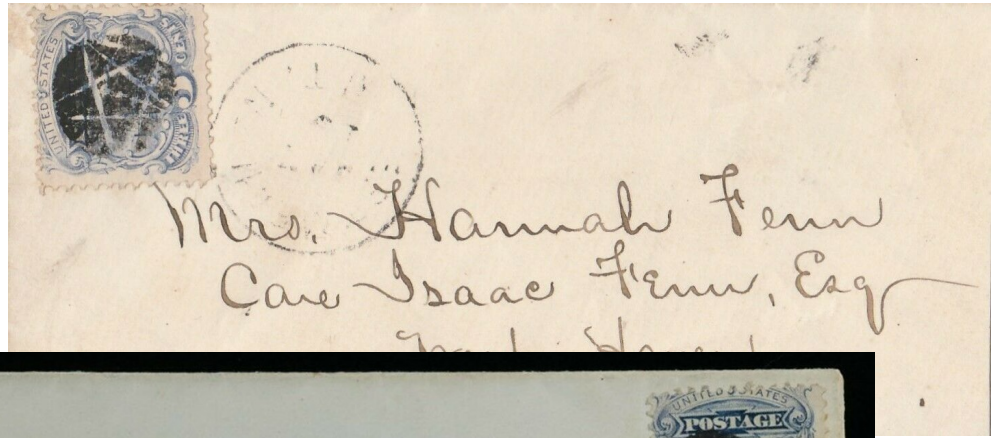


ST-O 27G
1869

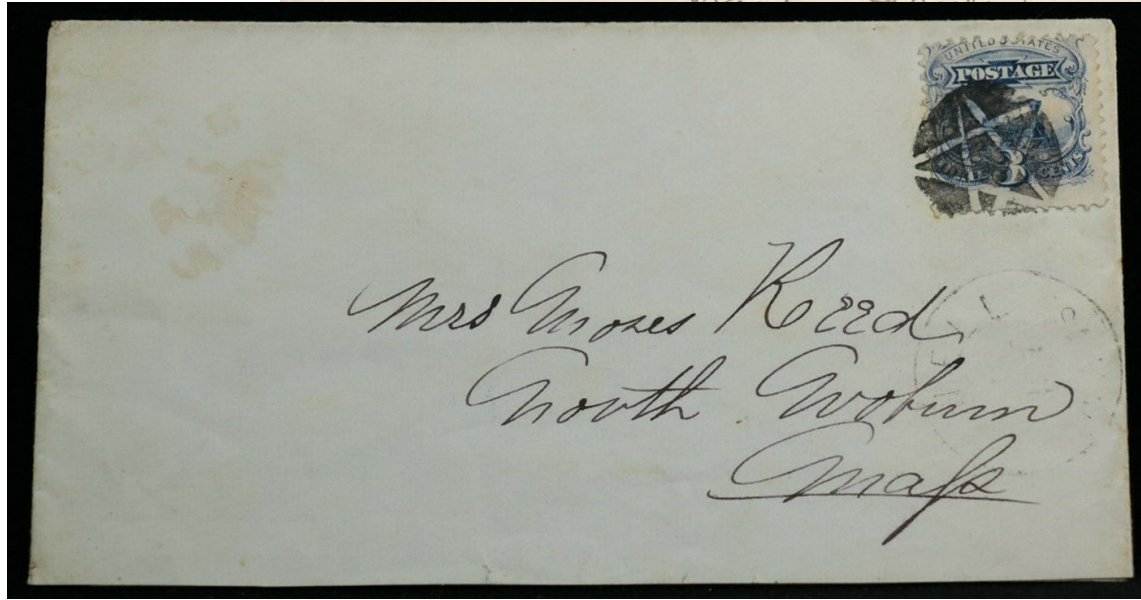


ST-O 27H
Lowell, MA 1869

Outlined Stars



ST-O 27F



ST-O 27H



ST-O 28
New Bern(e), NC 1861



ST-O 28A
Philadelphia, PA 1861

Outlined Stars



ST-O 28



ST-O 28A Mourning Cover



ST-O 29 [USCC 3375]
Pittsfield, MA 1861



ST-O 29A
Mount Pleasant, IA 11/23/1869



ST-O 30
Portsmouth, NH 6/13/1865-7/6/1865



ST-O 30A
Portsmouth, NH 6/12/1865-7/6/1865



ST-O 29



ST-O 29



ST-O 29

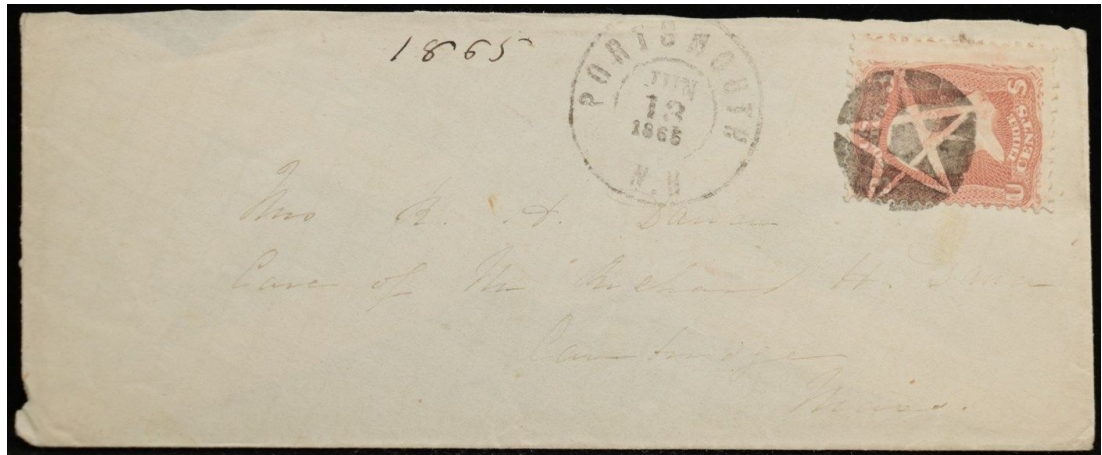


ST-O 29

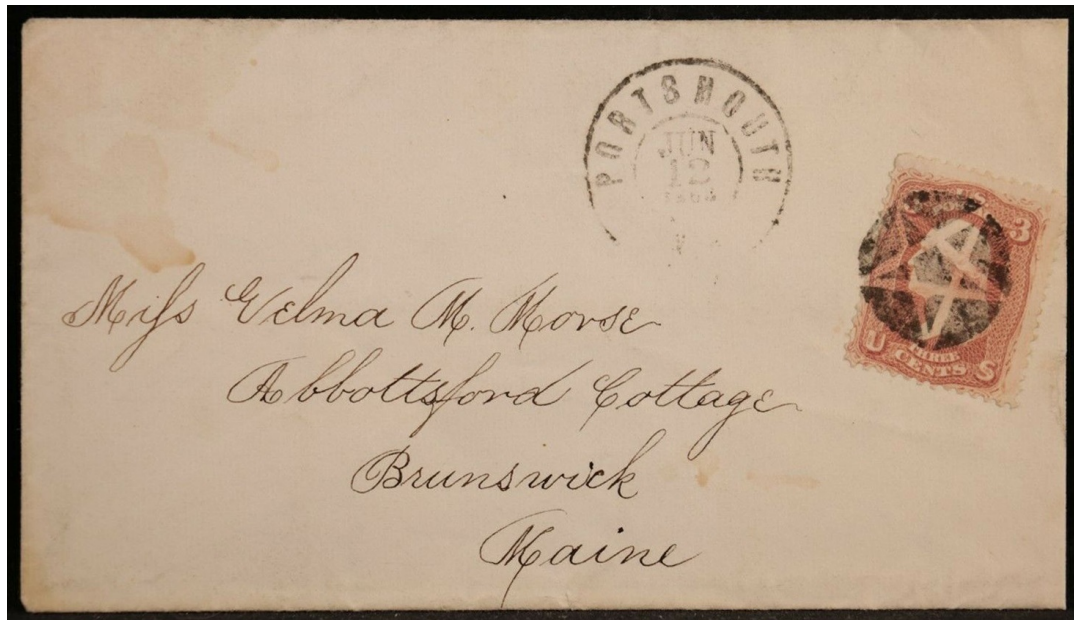
Outlined Stars



ST-S 29A



ST-O 30A



ST-O 30A

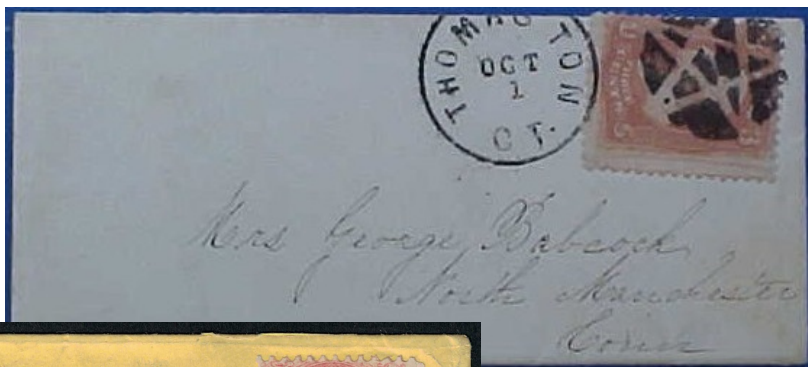
Outlined Stars



ST-O 30A



ST-O 30AA
Thomaston, CT 06455



ST-O 30AA



ST-O 30AA

Outlined Stars



ST-O 30B
1869



ST-O 30C
1869



ST-O 30CC
Normal, IL 5/23/1870



ST-O 30CC



ST-O 30D
1869



ST-O 31 blue
Mittineague, MA 1867-1869



ST-O 31A
Mittineague, MA 1867



ST-O 31

Outlined Stars



ST-O 31A



ST-O 31B
Fairbury, IL 1863



ST-O 32
Derby, CT 1869



ST-O 32A
Lewiston, IL 9/3/1864

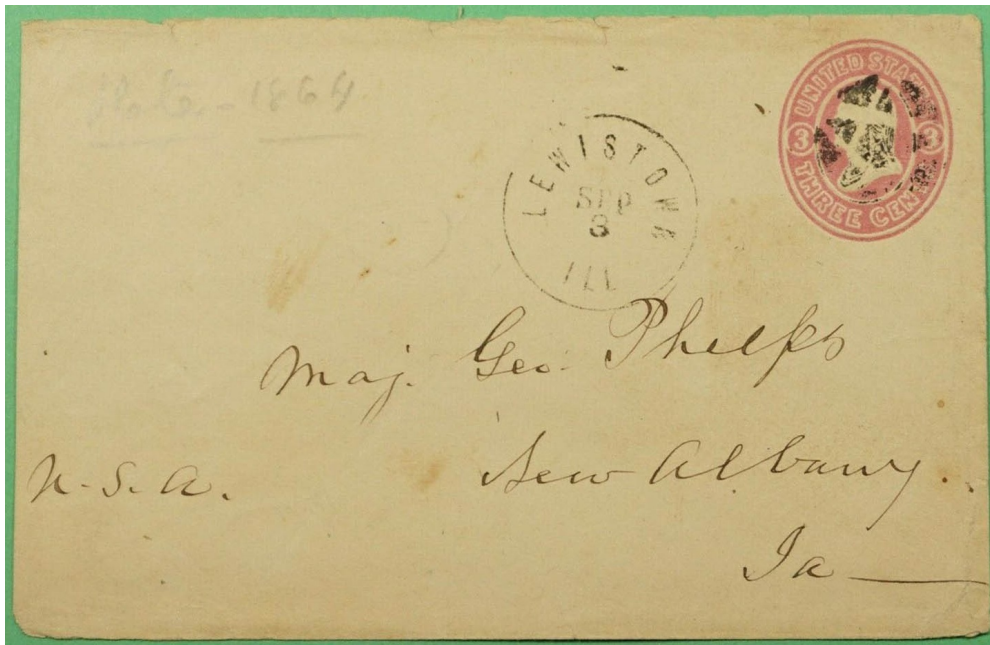


ST-O 33
Madison, WI 1861



ST-O 31B

Outlined Stars



ST-O 32A



ST-O 34 [Simpson pg151-320]
Northfield, VT 1851



ST-O 34A
New York, NY 14/4/63



ST-O 35
Centreville, MD 1869



ST-O 36
Madison, WI 1867-8/22/69

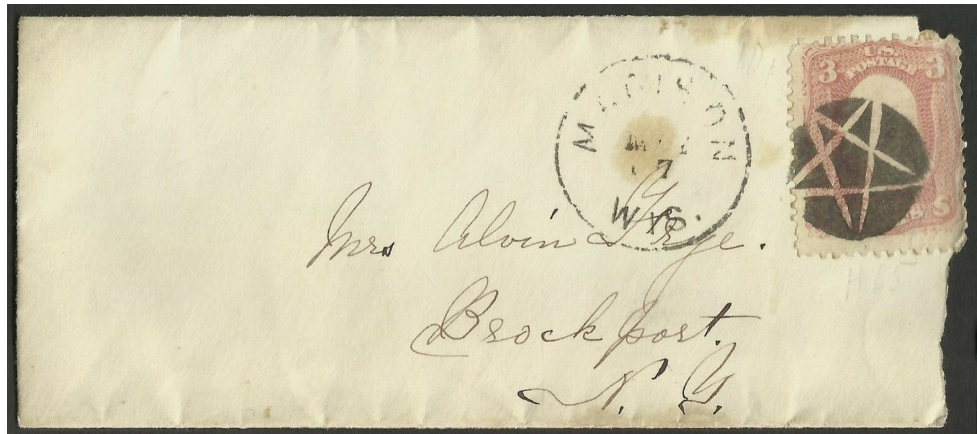


ST-O 34A

Outlined Stars



ST-O 36



ST-O 36



ST-O 36

Outlined Stars



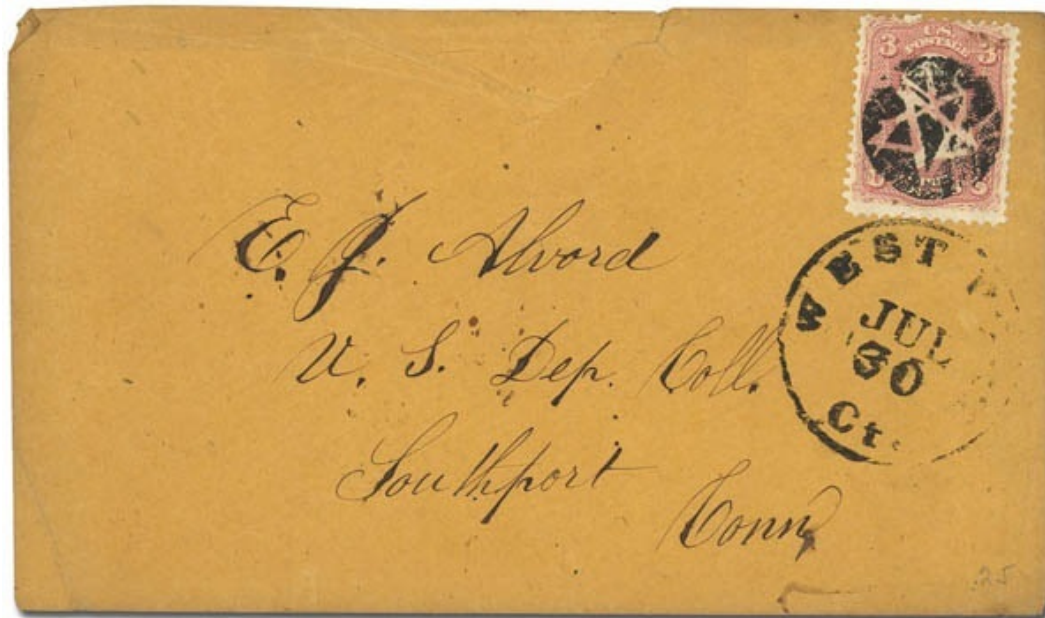
ST-O 41 [USCC 3339]
Westport, CT 1861



ST-O 41A
1861



ST-O 41AA
Pittsfield, MA 1861



ST-O41



ST-O 41B
1861



ST-O 41BB
Cooperstown, NY 4/17/1863



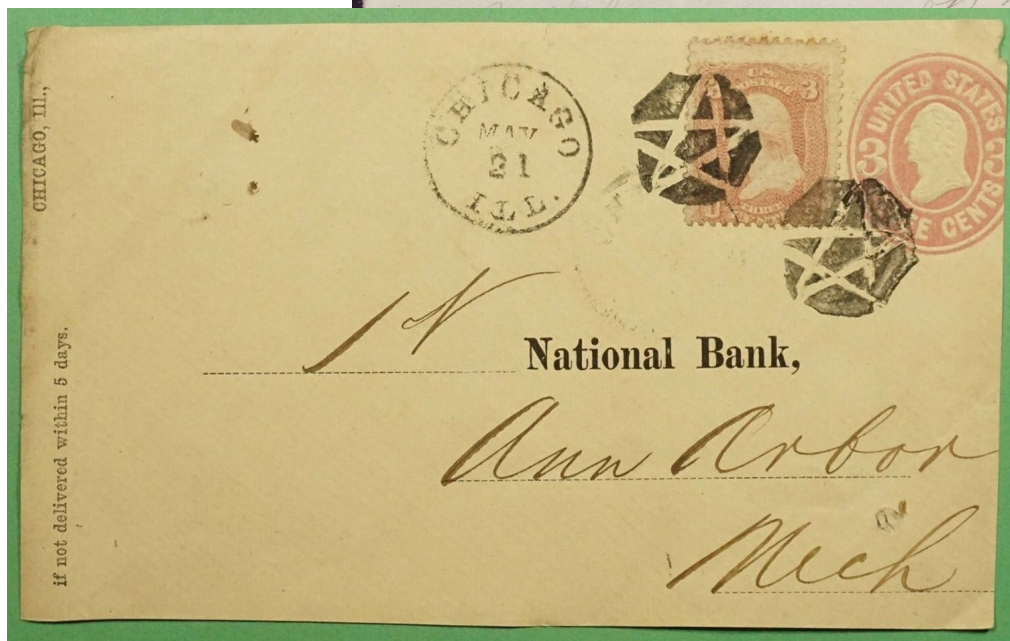
ST-O 41C
Chicago, IL 5/21/1868



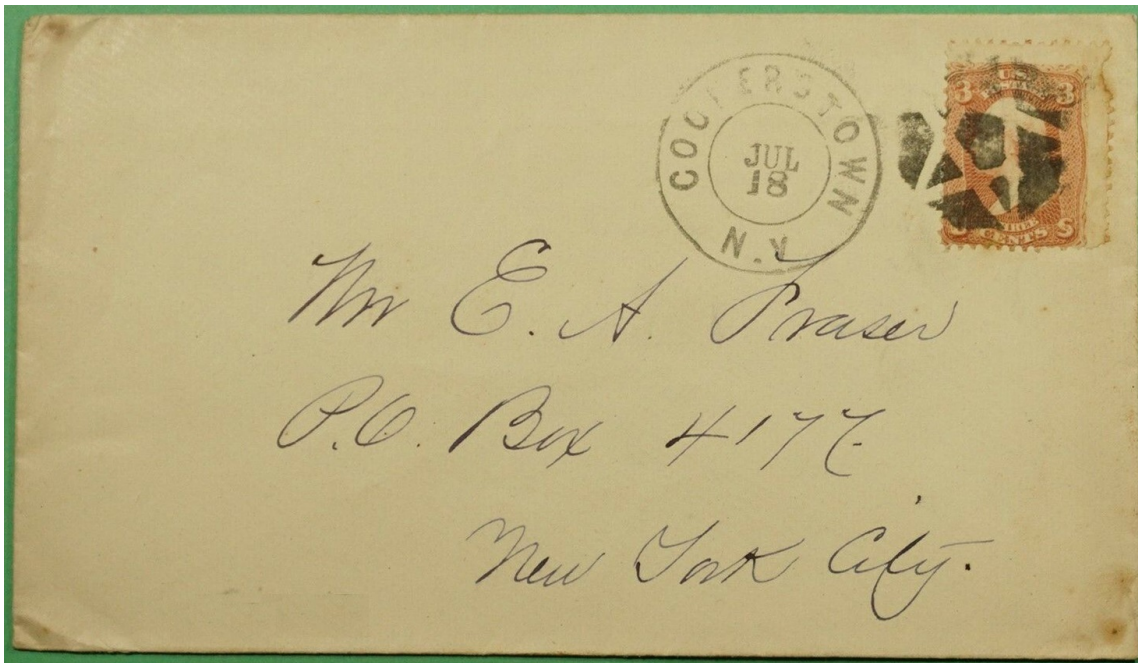
ST-O 41CC
Cooperstown, NY 7/18/1868(?)



ST-O-41C



ST-O-41C



ST-O-41CC

Outlined Stars



ST-O 41D
1861



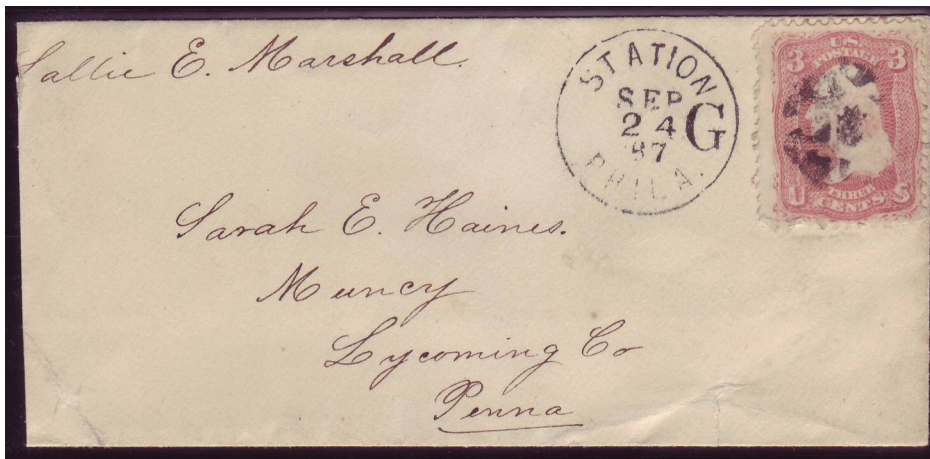
ST-O 41E [USCC 3378]
1861



ST-O 41F [USCC 3393]
Warrentown, VA 1861



ST-O 41G
Philadelphia, Sta. G, PA
9/14/1867



ST-O 41G



ST-O 41H
Atlanta & Augusta RR 1865



ST-O 41J
1861



ST-O 41K [USCC 3385]
Le Roy, NY 1861



ST-O 41L [USCC 3390]
Stockton, CA 1861



If not delivered within 10 days, to be returned to

ST-O 41H

Outlined Stars



ST-O 41M
Westerly, RI 1868



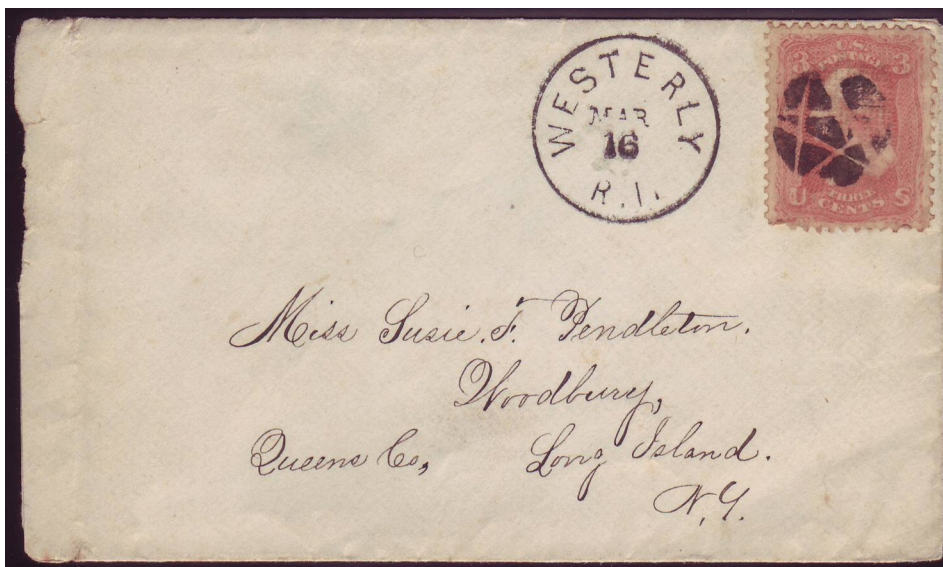
ST-O 41N
1861



ST-O 41P
[Simpson pg141-168]
Canton, MI 1856



ST-O 41Q [USCC 3376]
Canton, MI

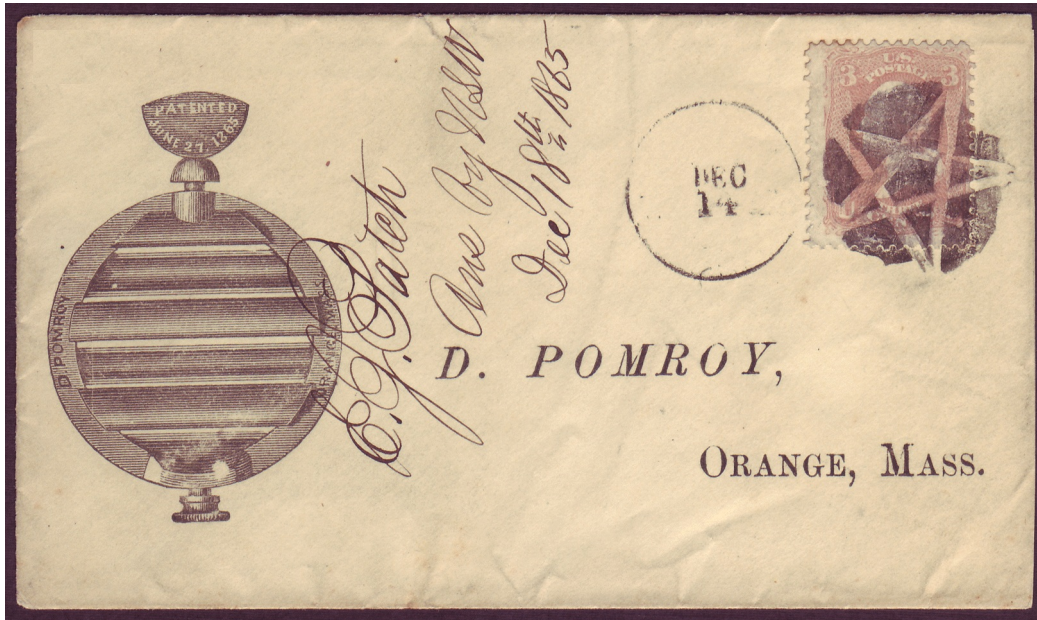


ST-O 41M

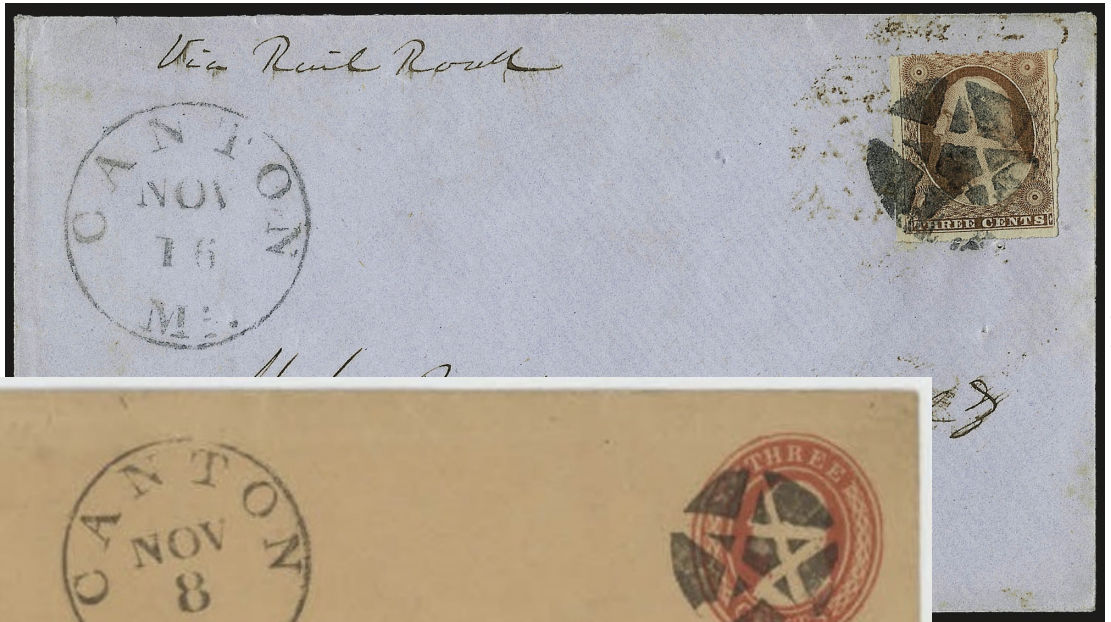


ST-O 41M

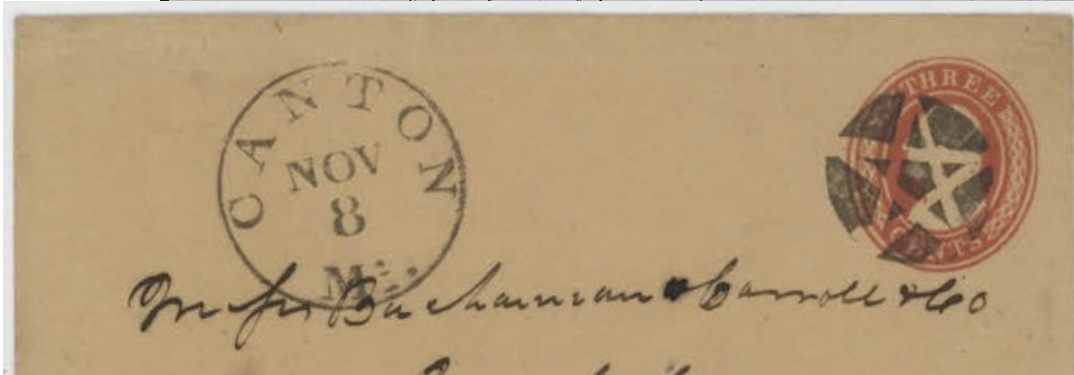
Outlined Stars



ST-O 41N



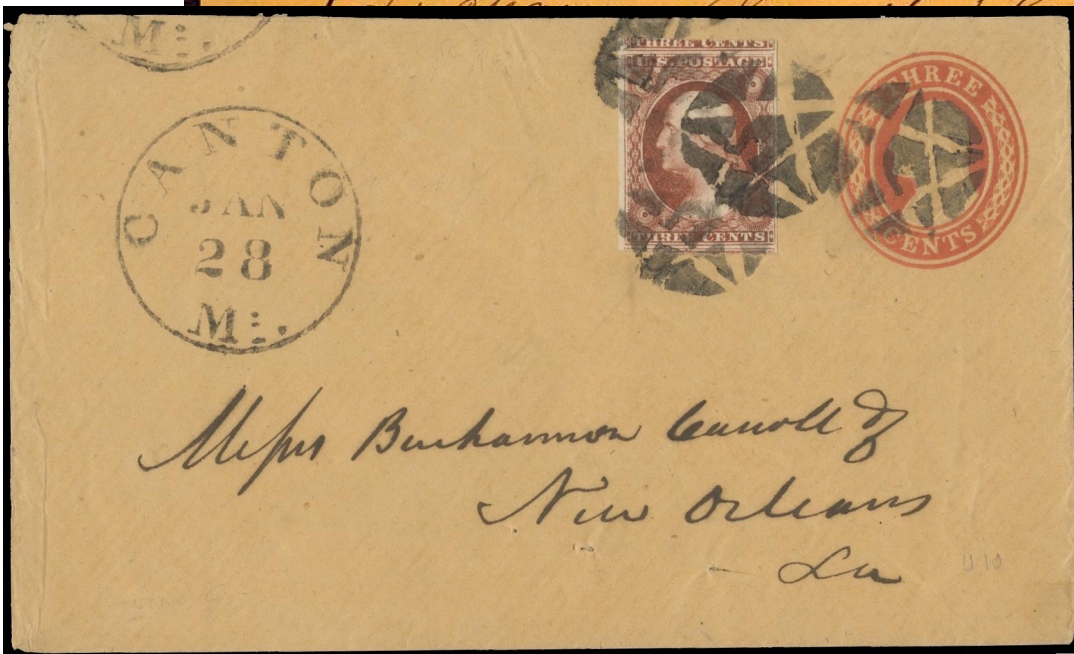
ST-O 41P



ST-O 41P



ST-O 41P



ST-O 41P

Outlined Stars

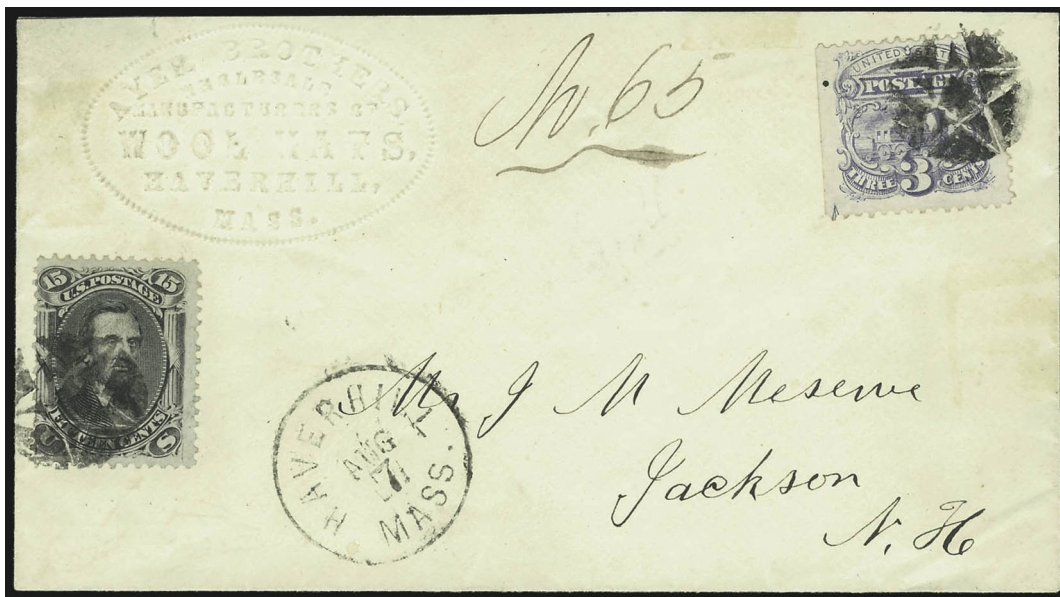


ST-O 41Q

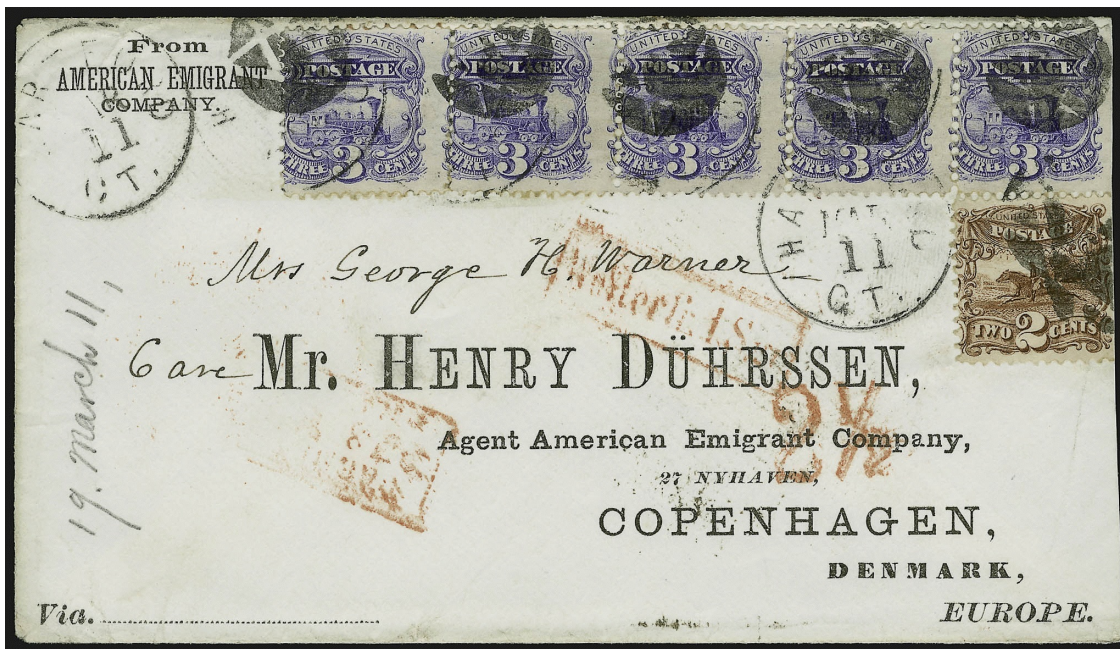
	<p>ST-O 41R 1869</p>	<p>ST-O 41S 1863</p>	<p>ST-O 41T 1861</p>	
<p>ST-O 41U Chester, PA 1867</p>	<p>ST-O 41V Haverhill, MA 9/8/1869</p>	<p>need scan</p> <p>ST-O 41W Hartford, CT 1869</p>	<p>ST-O 41X [USCC 3383] Hartford, CT 1864</p>	<p>ST-O 41Y 1867</p>



ST-O41U

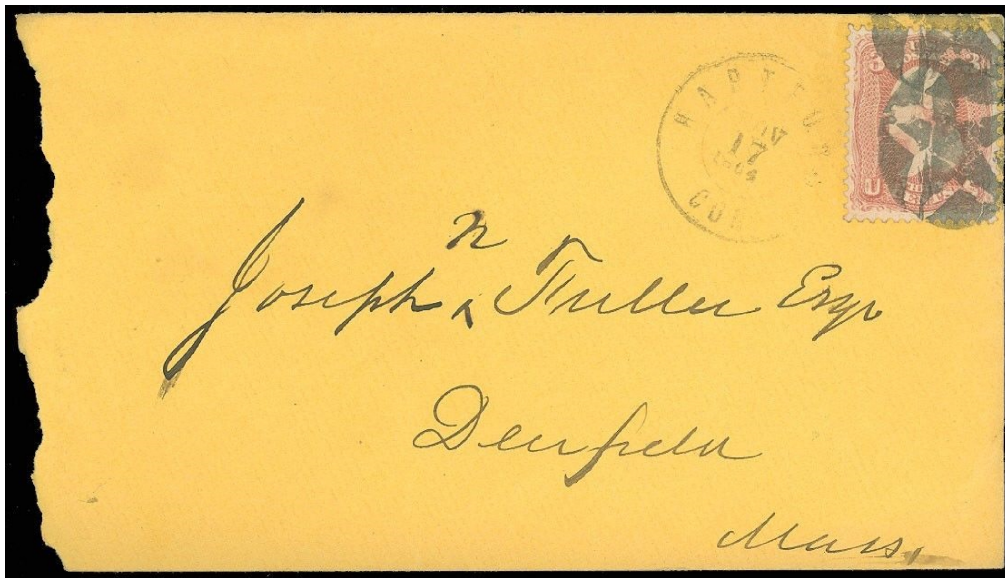


ST-O41V



ST-O41W

Outlined Stars



ST-O 41W



ST-O 41Z
1861



ST-O 42 [USCC 3347]
Middletown, NY 1861



ST-O 43 [USCC 3349]
1861



ST-O 44 [USCC 3370]
1861



ST-O 45 [USCC 3373]
1861



ST-O 46
1861



updated May 19, 2025 (7:06am)