

Elaborate Stars



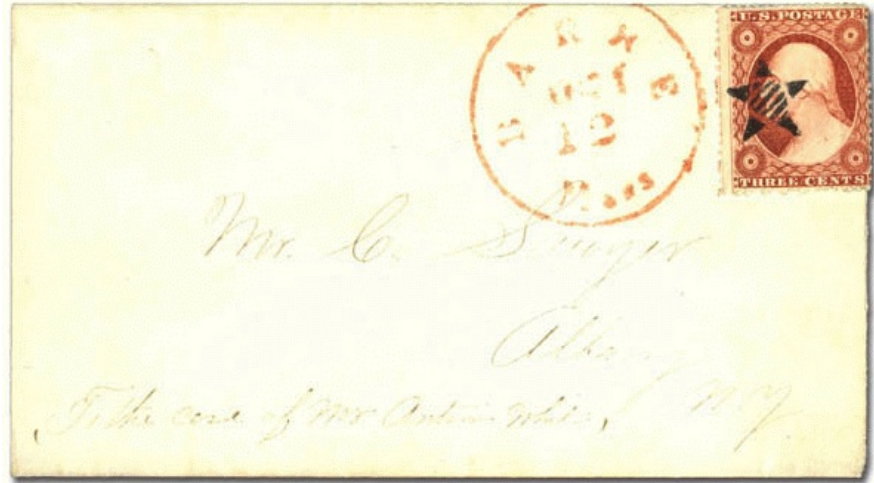
ST-E 1
1861



ST-E 2 [Simpson pg137-101]
Barre, MA 1857-61



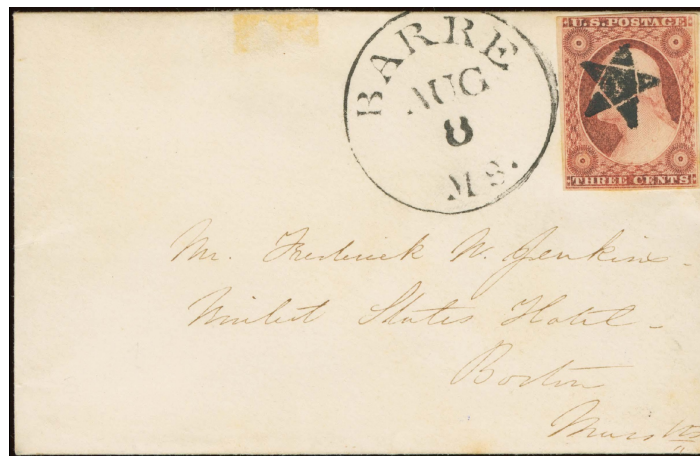
ST-E 2A
Barre, MA 1851



ST-E 2



ST-E 2



ST-E 2A

Elaborate Stars



ST-E 2B
[Simpson pg143-205]
Freehold, NJ 12/3/1860



ST-E 2B

Elaborate Stars



ST-E 2C
Cincinnati, OH 1861



ST-E 2C



ST-E 2C

Elaborate Stars



ST-E 3
Hartford, CT 1861



ST-E 3



ST-E 3A
Canaan, CT 1857

Elaborate Stars



ST-E 4
New York, NY(?) 1861



ST-E 5 blue, black
1861



ST-E 5A blue
1863



ST-E 5



compare with ST-D 34

ST-E 6 blue, black
Brattleboro, VT 1861

Elaborate Stars



worn state



ST-E 7 [USCC 3182; Blake-Davis 1053]
Boston, MA 1861



ST-E 7



ST-E 7



ST-E 7



ST-E 7

Elaborate Stars



ST-E7



ST-E 9 blue, black
New York, NY 2/10/1867(?)



ST-E 9A [USCC 3184]
1861



ST-E 9B [USCC 3275]
1861



ST-E 9

Elaborate Stars



ST-E 10 [USCC 3270]
Hartford, CT □ 5/6/864-7/14/1864



ST-E 10



ST-E 10



ST-E 10



ST-E 10

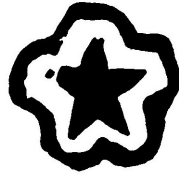
Elaborate Stars



ST-E 10A
[Simpson pg135-68]
Fairport, IA



ST-E 11
Hartford(?), CT □ 1861

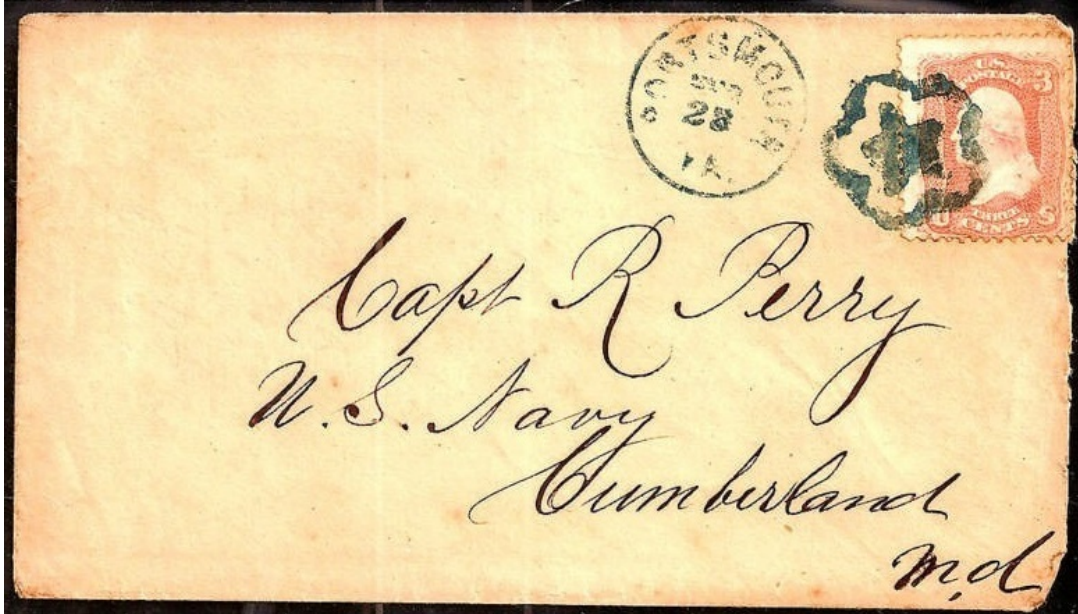


ST-E 12 blue
1867



need scan

ST-E 12A
Portsmouth, VA □ 1861



ST-E 12A

Elaborate Stars



ST-E 13 [USCC 3176; Simpson pg131-40]
Portland, CT □ 1857-61



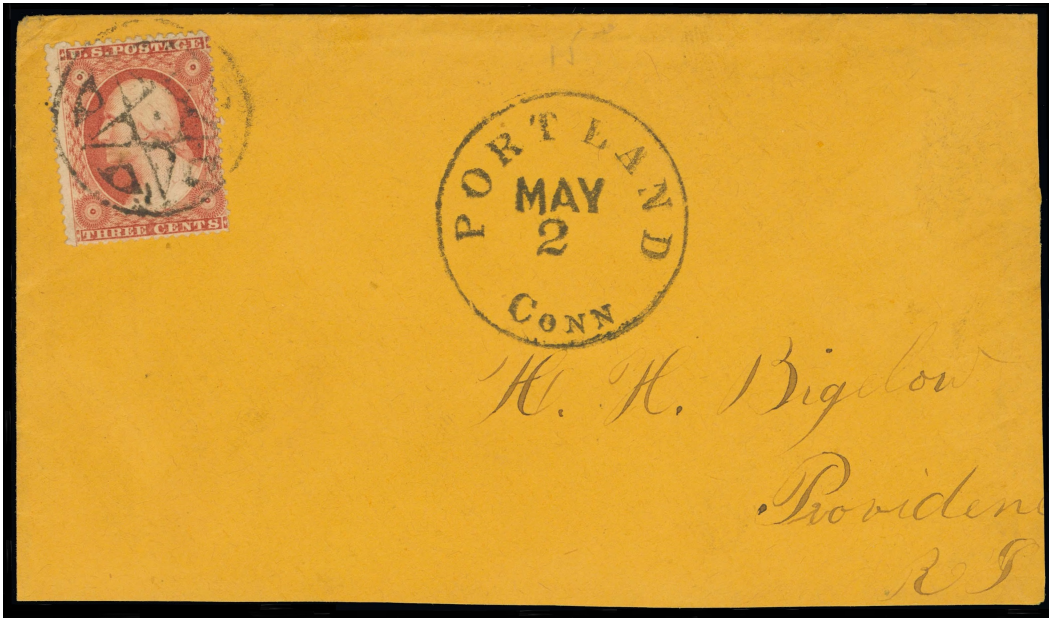
ST-E 13



ST-E 13

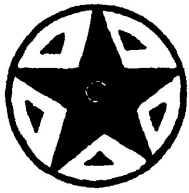


ST-E 13



ST-E 13

Elaborate Stars



ST-E 14 [USCC 3271]
St. Johns, MI □ 1861



ST-E 15
Petersham, MA □ 1861



ST-E 15A
1857



ST-E 15

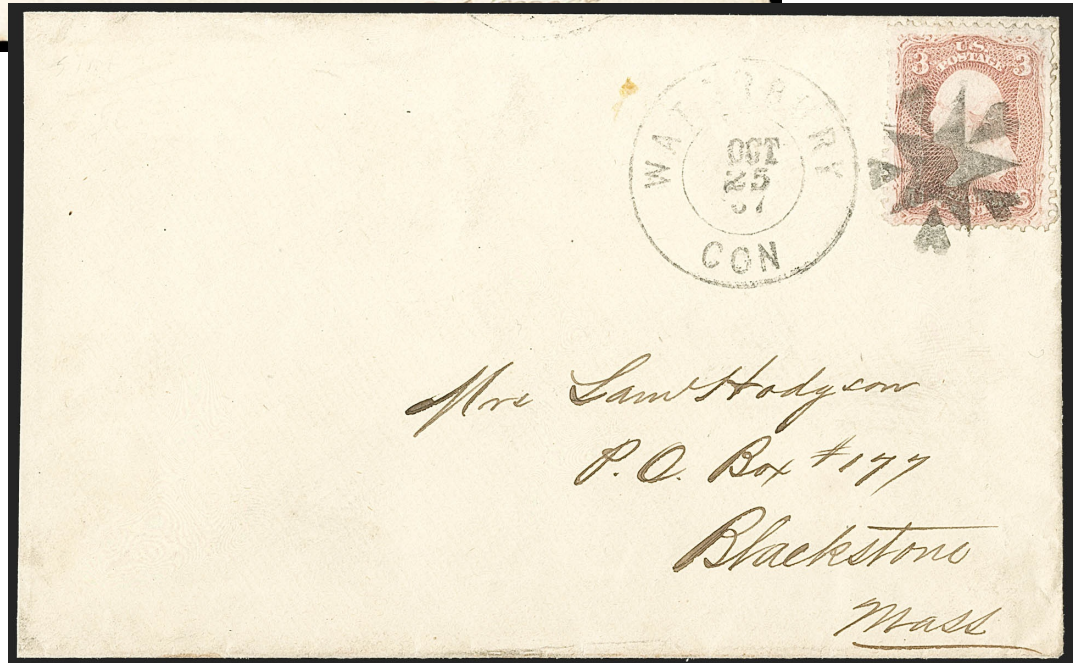
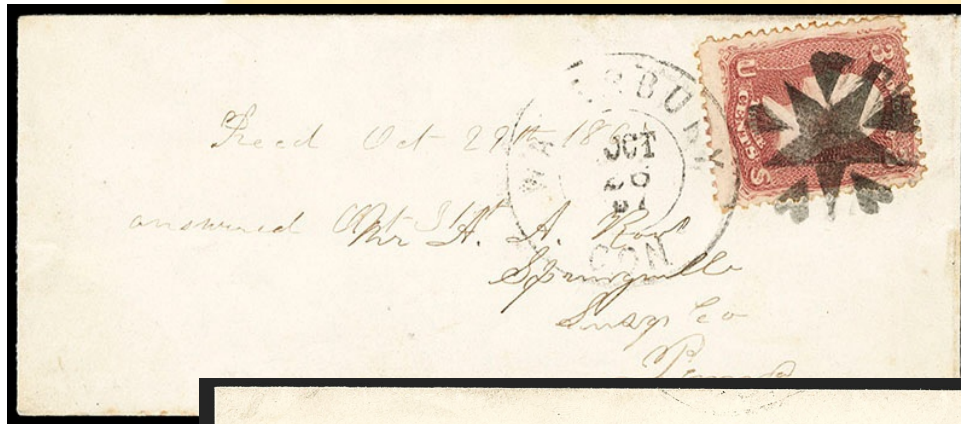


ST-E 16 [USCC 3274]
New Durham, NJ □ 9/14/1867

Elaborate Stars



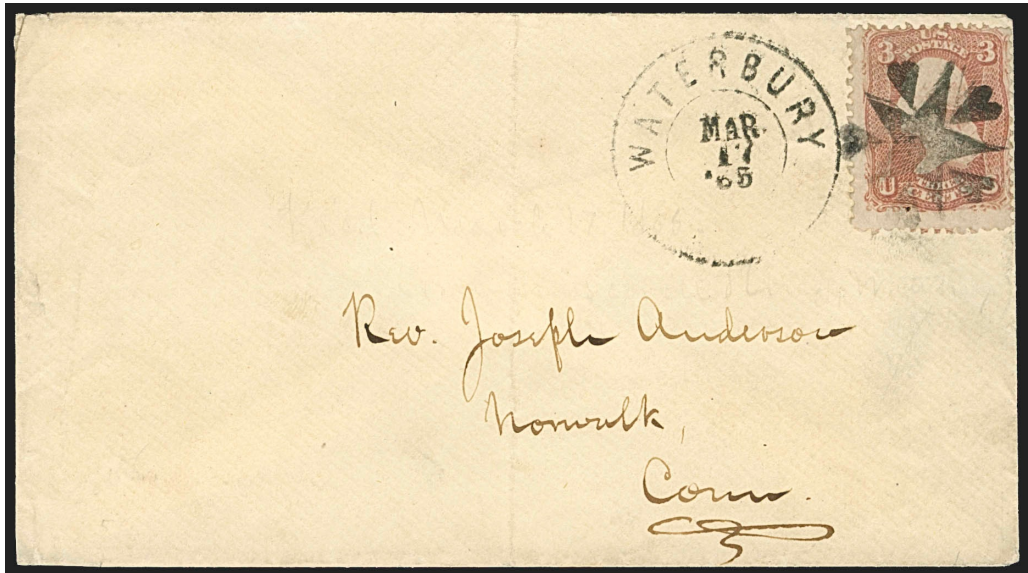
ST-E 17 [USCC 1851; Rohloff J-10]
Waterbury, CT □ 3/7/1865-10/26/1867



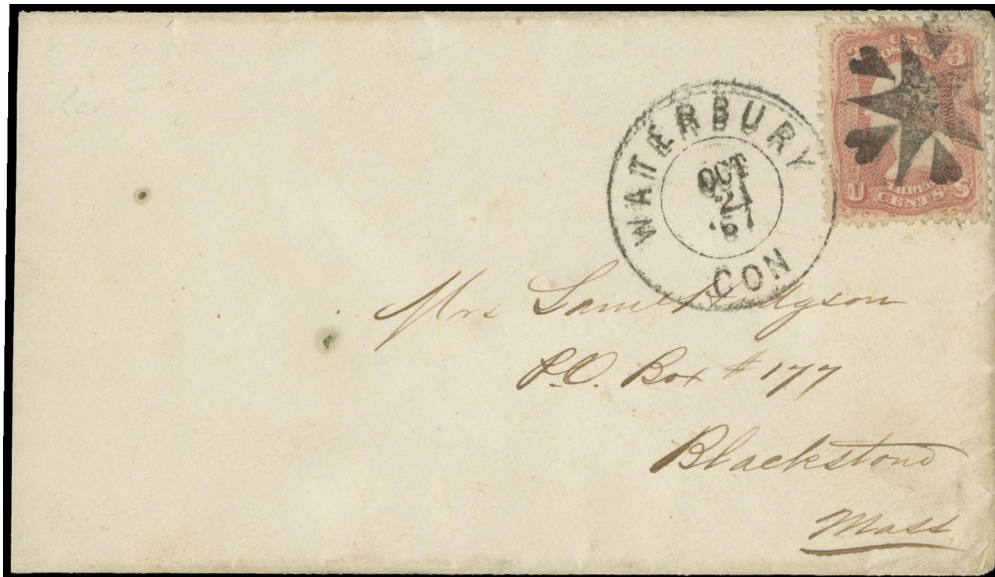
ST-E 17

ST-E 17

ST-E 17



ST-E 17



ST-E 17



ST-E 17

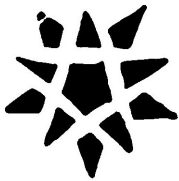
Elaborate Stars



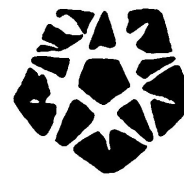
ST-E 18
Westborough, MA 1867-1869



ST-E 18



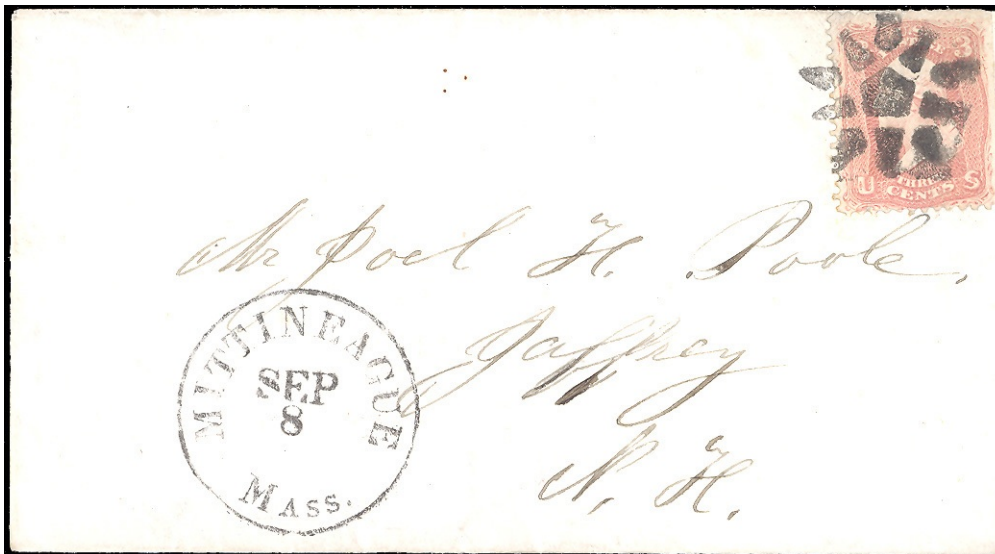
ST-E 20 [USCC 3278
Mittineague, MA 1861



ST-E 21
1861



ST-E 21A blue
1861



ST-E 20

ST-E 20



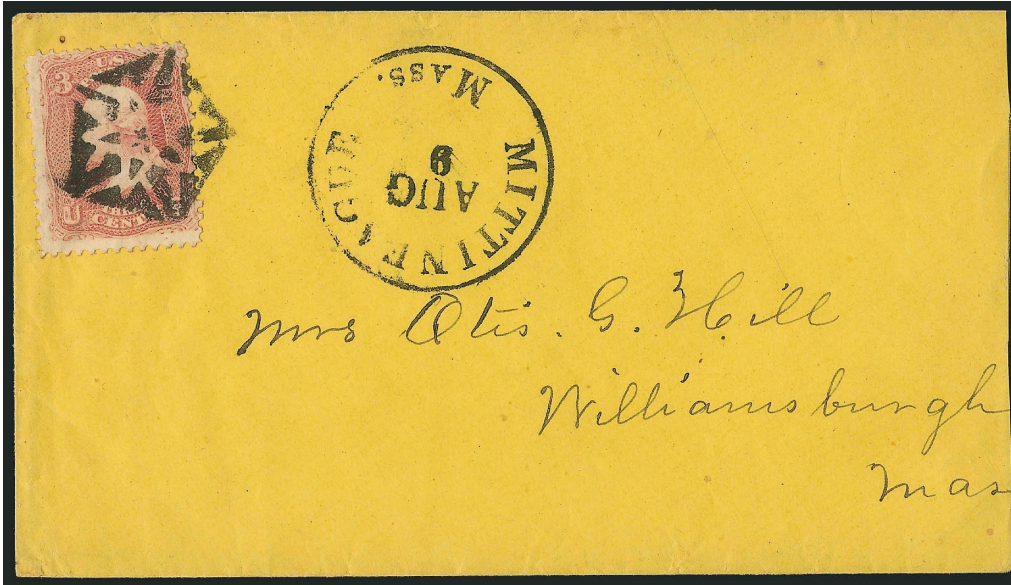
ST-E 22 [USCC 3194]
Mittineague, MA 1861

need scan

ST-E 22A
Mittineague, MA 1861



ST-E 22

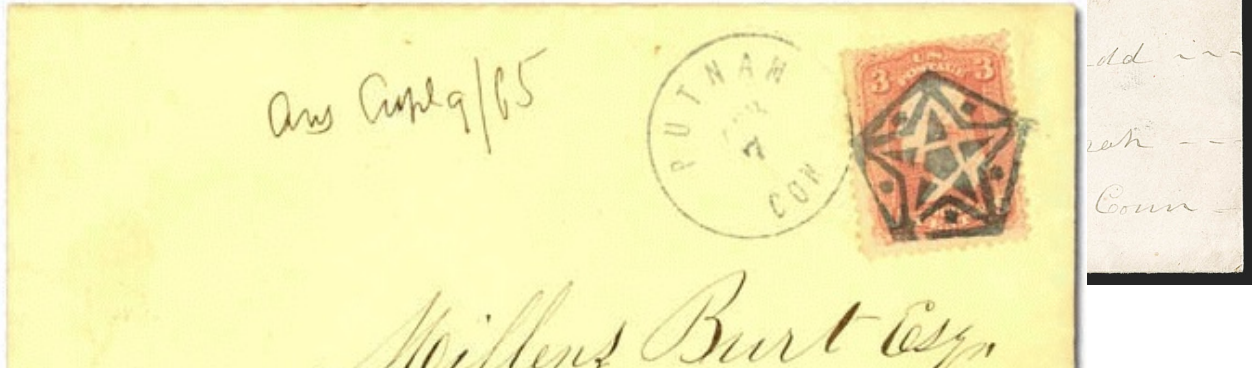


ST-E 22



ST-E 22A

Elaborate Stars



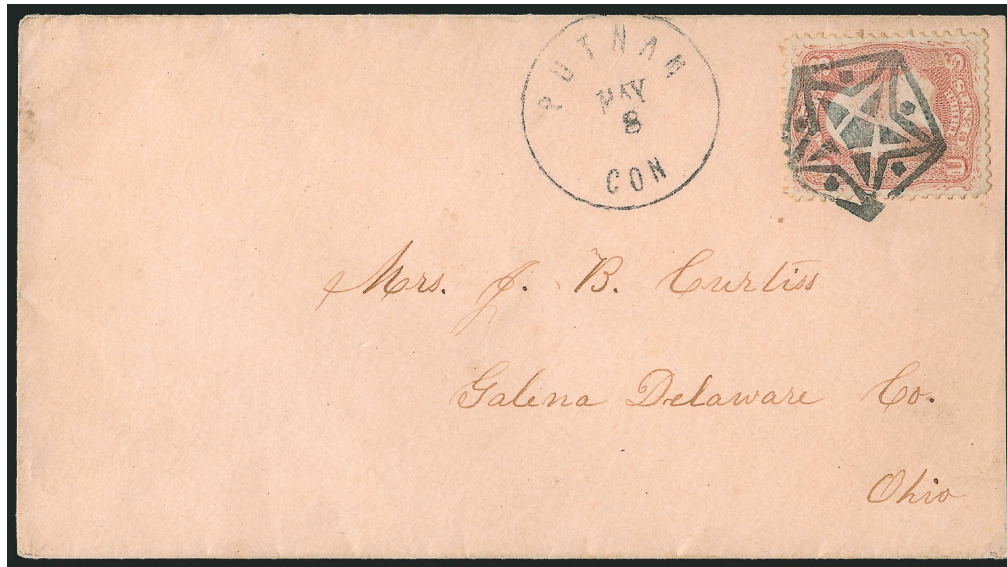
ST-E 23

ST-E 23

ST-E 23



ST-E 23



ST-E 23



ST-E 23

Elaborate Stars

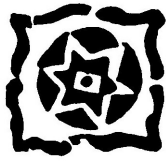


ST-E 23A
Mittineague, MA 1861



ST-E 23A

Elaborate Stars



ST-E 24 blue [USCC 3427]
Putnam, CT 1861-69



ST-E 24

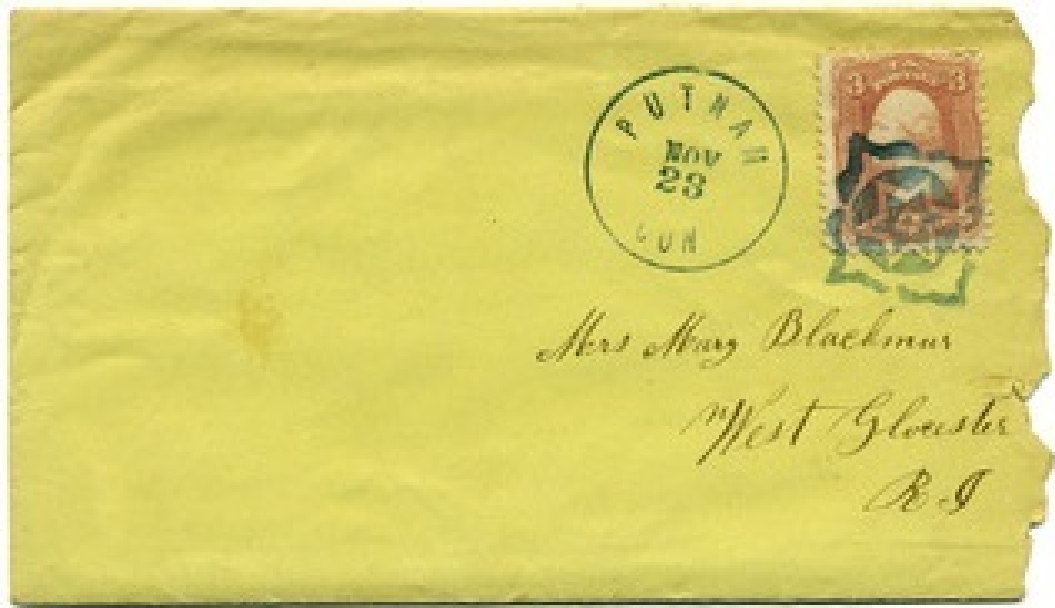


ST-E 24



ST-E 24

Elaborate Stars



ST-E 24



ST-E 24



ST-E 24

Elaborate Stars



ST-E 25 blue
Glendale, MA 1857



ST-E25A blue [USCC 3208]
Glendale, MA 1861 and Cornwall, VT? 1861



ST-E 25A



ST-E 27
1861



ST-E 28 [USCC 3254; Simpson pg149-288]
Academia, PA 1851



PN-H 3
1861

Elaborate Stars



ST-E 29 [USCC 3308]
Putnam, CT □ 1861



ST-E 29



ST-E29

Elaborate Stars



worn device

ST-E 29A [USCC 3272]
Putnam, CT 1861




ST-E 30
New York, NY 1861-67



ST-E 30

Elaborate Stars




CR-C 23
Framington, IL  1861



ST-E 32
1861



ST-E 32A
Hinsdale, MA  1857



ST-E 32A

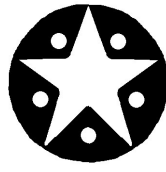
Elaborate Stars



ST-E 33
Brookline, MA 1861



ST-E 33a [USCC 3104]
1861



ST-E 33B
Brookline, MA 1861



ST-E 33

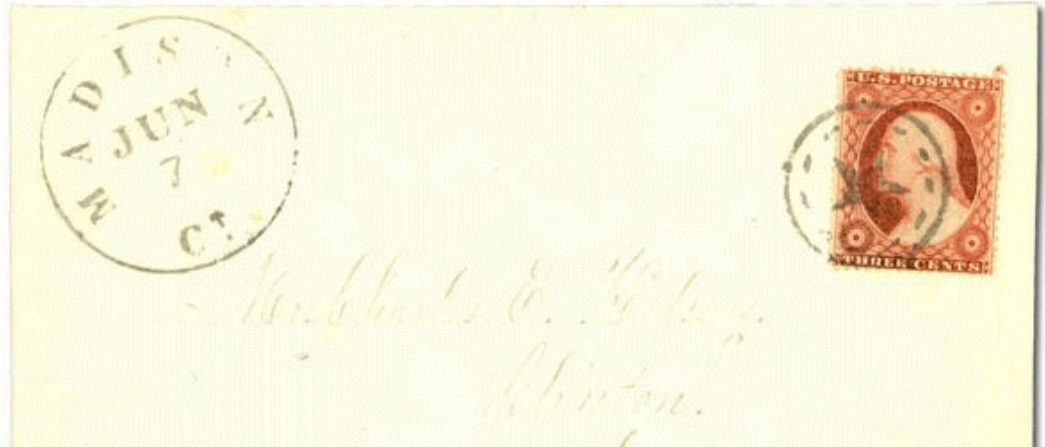


ST-E 33B

Elaborate Stars



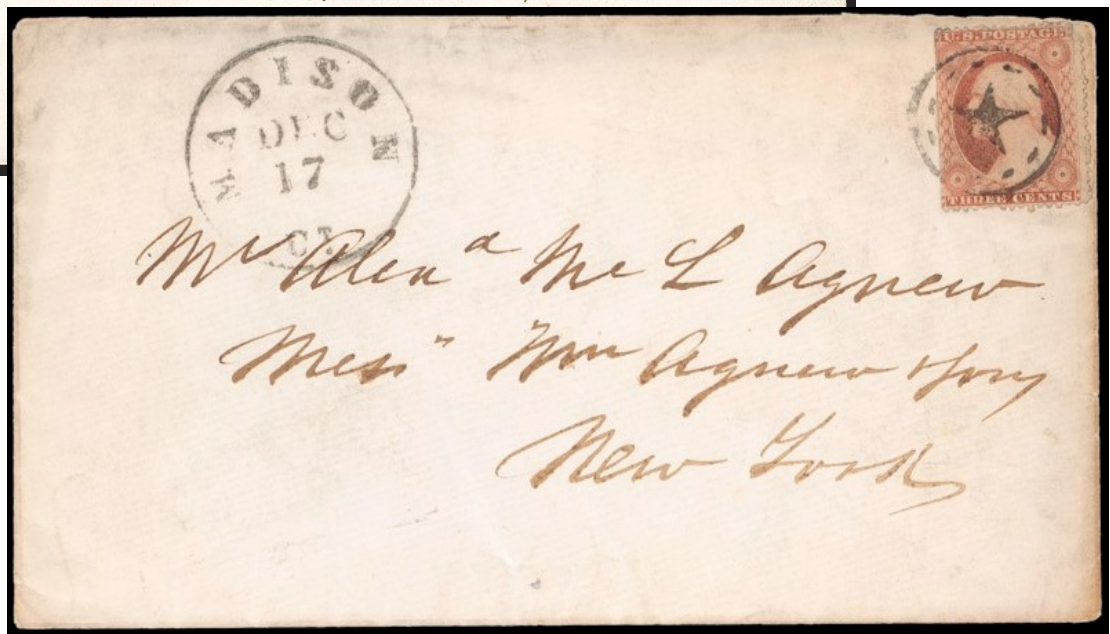
ST-E 34 [USCC 3307; Simpson pg129-35]
Madison, CT □ 11/20/1860; Salem, OH? 1857



ST-E 34



ST-E 34



ST-E 34

Elaborate Stars



ST-E 34

Elaborate Stars



ST-E 34A
Hinsdale, MA □ 1851



ST-E 35
Grandville, MI □ 1857



ST-E 36
Grandville, MI 1861



ST-E 34A



ST-E 34A

Elaborate Stars



ST-E 37 [USCC 3309; Simpson pg141-170]
Canton, MS □ 1860(?) - 2/14/1861



ST-E 37A
[Simpson pg141-163]
Grandville, MI



ST-E 37



ST-E 37



ST-E 37



ST-E 37



ST-E 38
Richmond, VA 7/6/1867



ST-E 38A
1863



ST-E 38C blue
1863



ST-E 38



ST-E 38

Elaborate Stars



ST-E 38



ST-E 39
New York, NY [] 1861-66



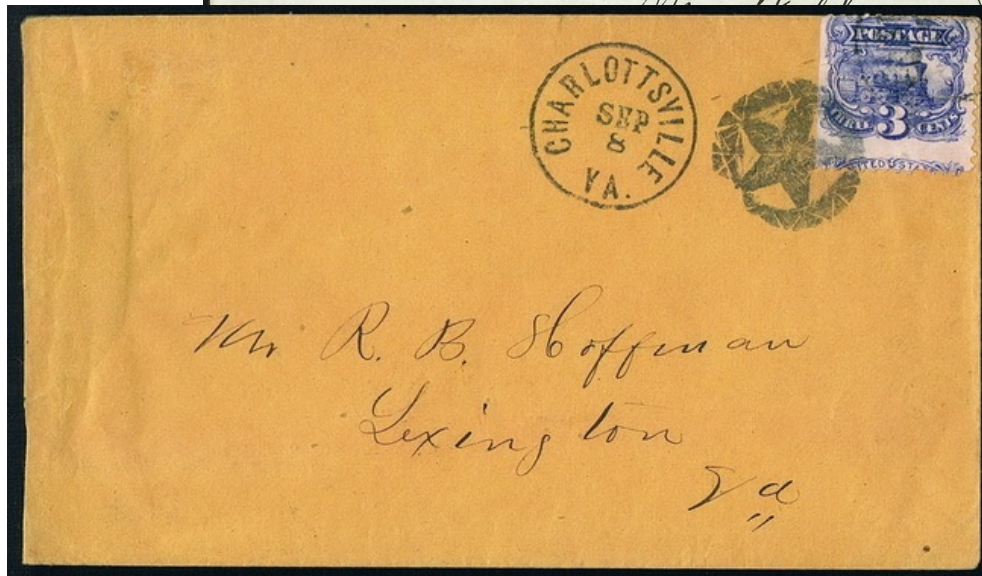
ST-E 40 [USCC 3248]
Charlottesville, VA [] 8/18/1869



ST-E 40A
Macomb, IL [] 12/28/1869



ST-E 40



ST-E 40

If not called for within 10 days
return to
L. A. SIMMONS,
ATTORNEY AT LAW,
MACOMB, - - - ILLINOIS



*Answered
Jan 4/1900 - P.M.*

*Rice Harper Esq
Sandusky City
Ohio -*

STE 40A

Elaborate Stars



ST-E 41 [USCC 3315]
New York, NY 1861-67



ST-E41

Elaborate Stars



ST-E 42 blue, black [USCC 3098]
New York, NY(?) 1867

Elaborate Stars



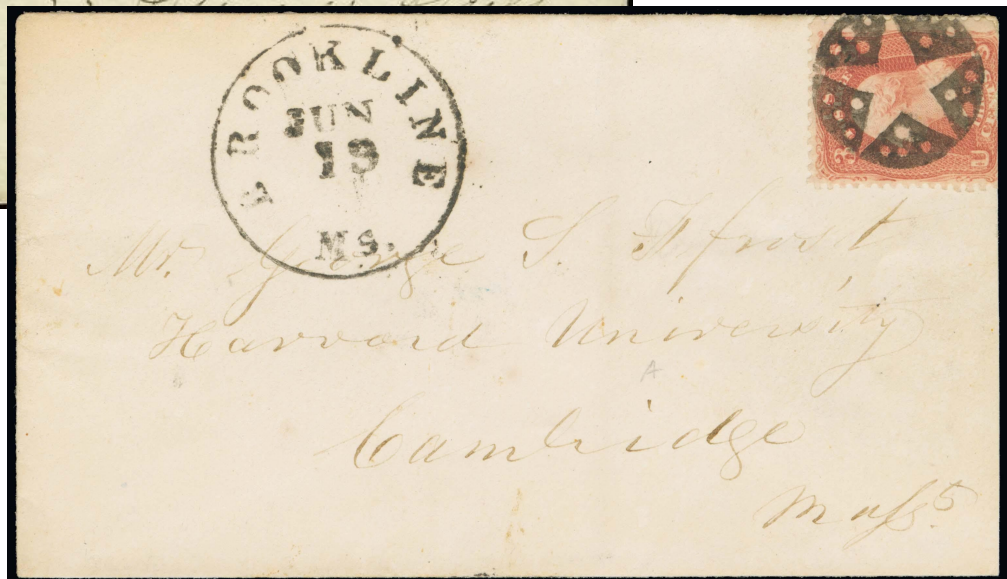
ST-E 43 [USCC 3073]
Brookline, MA 1861



ST-E 43



ST-E 43



ST-E 43

Elaborate Stars

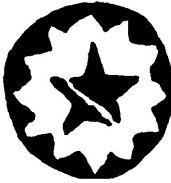
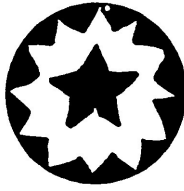


ST-E 43



ST-E 44
1863

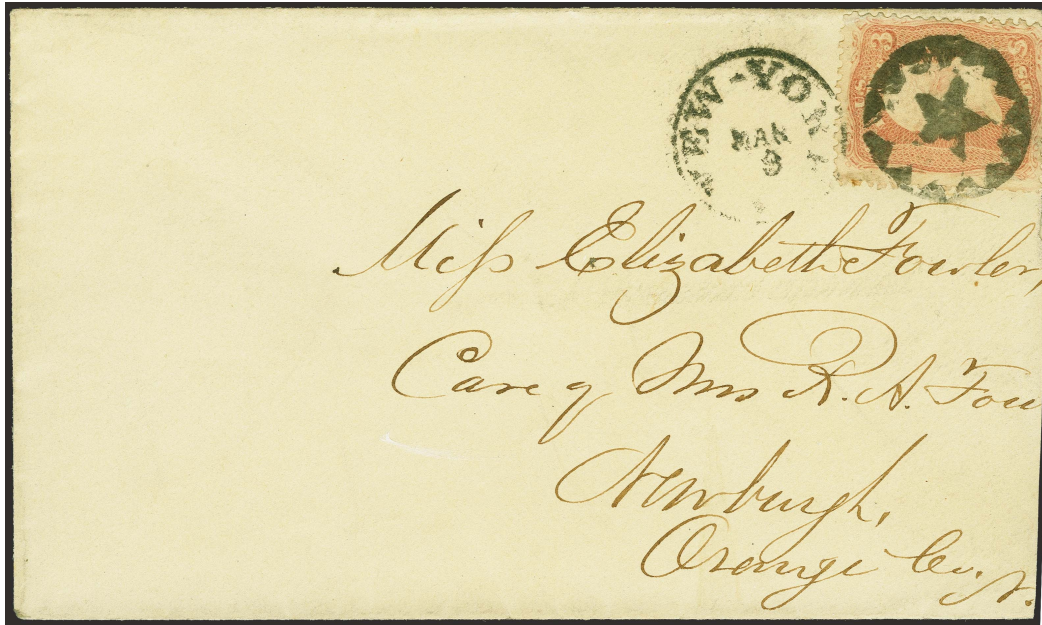
Elaborate Stars



worn state



ST-E 45 black, red, blue [USCC 3313]
New York, NY 3/9/1867



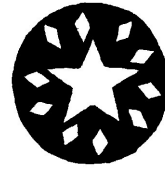
ST-E 45

Elaborate Stars



smaller star than ST-E45

ST-E 47
New York, NY 12/27/1867-6/28/1868



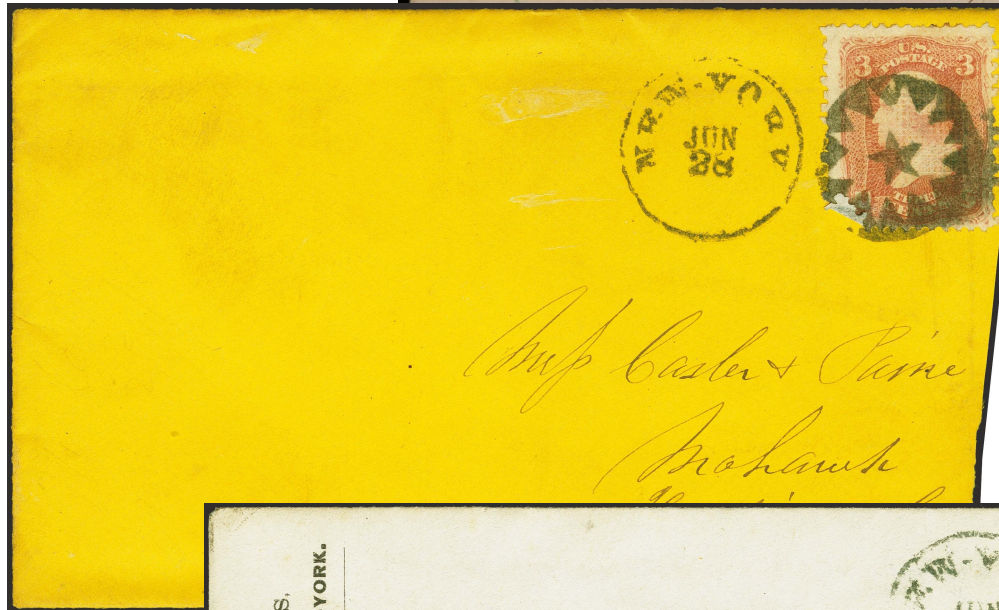
ST-E 48 blue
---rk City 1861



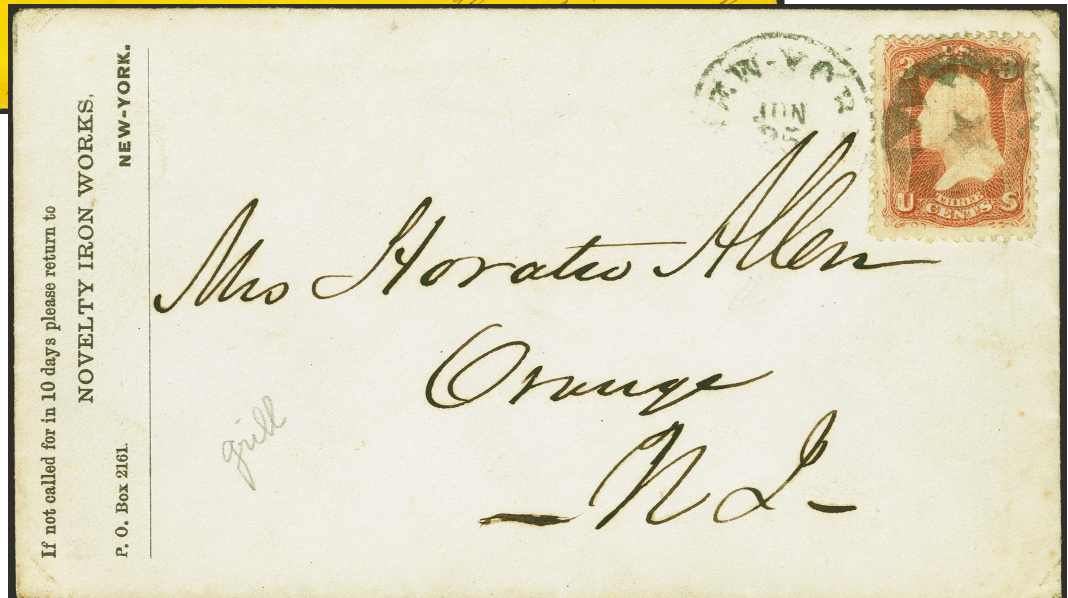
ST-E 49
Meriden, NH 1869



ST-E 47



ST-E 47

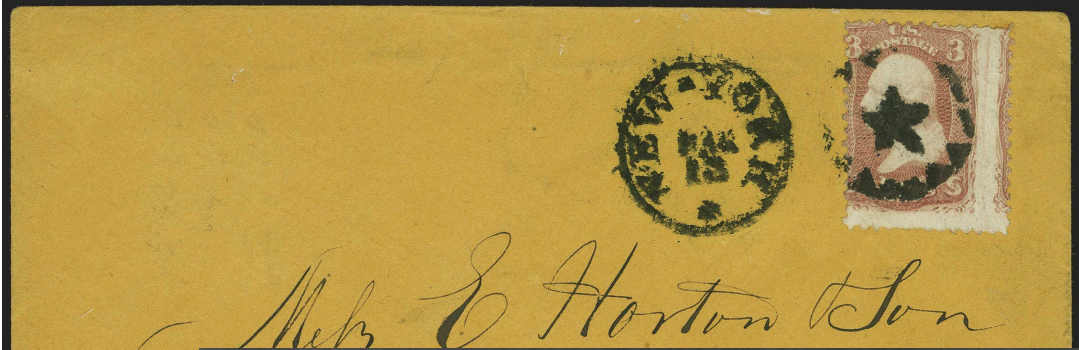


ST-E 47



Mr Joseph Tenney

STE-47



Mr E Horton Son

STE-47



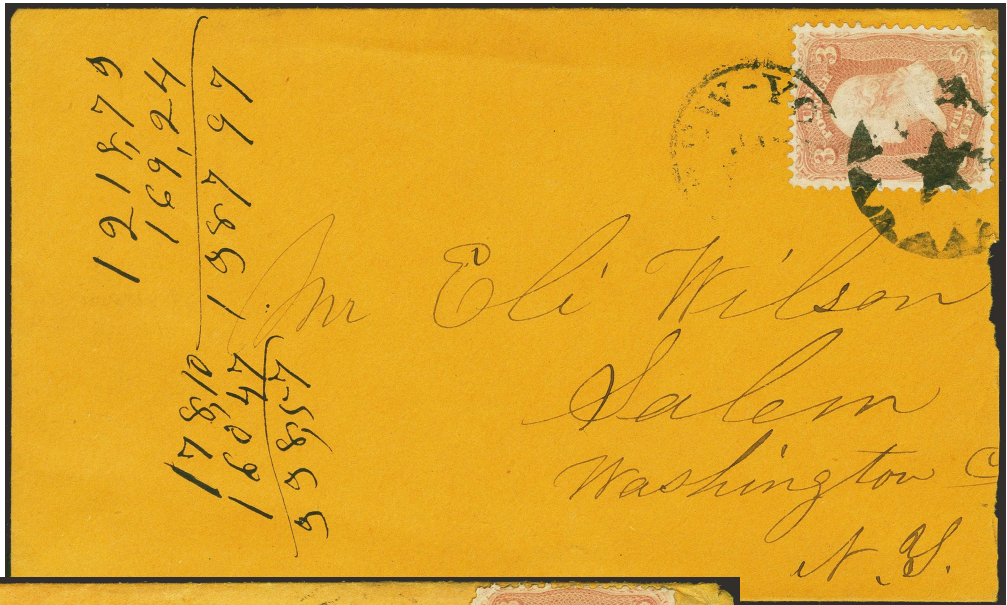
A. M. Dutton Esq

STE-47



Mr Milo I Moore
 Sherburne
 Vermont

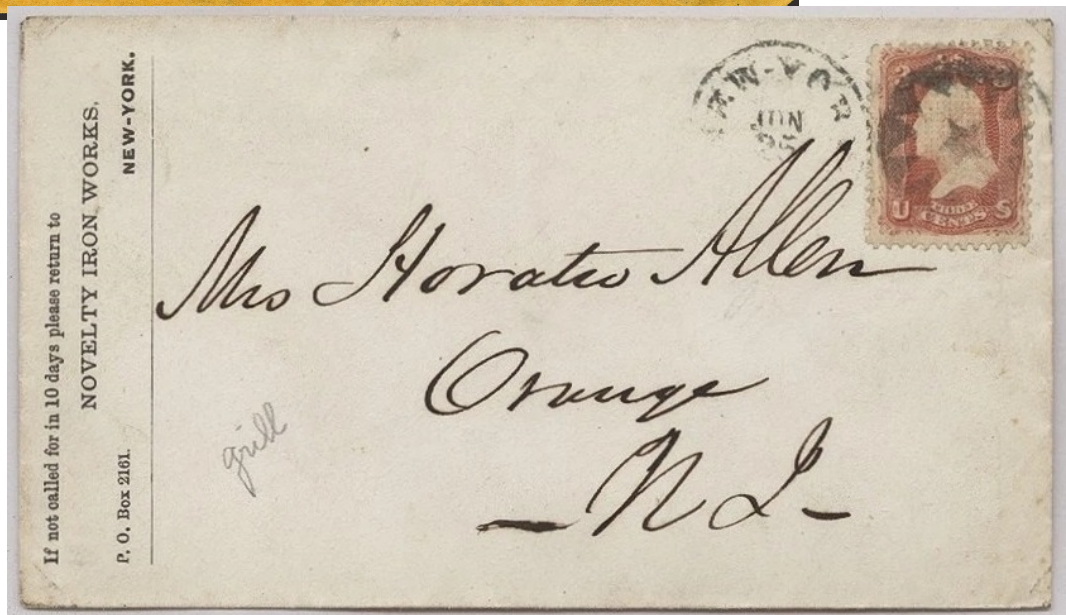
STE-47



ST-E 47



ST-E 47



ST-E 47

Elaborate Stars



ST-E 49A
[Simpson pg147-259]
Sterling, NY



ST-E 49B [USCC 3085]
Fort Bridger, UT 1861



ST-E 49B



ST-S 49C
Hartford, CT 1861



ST-E 50 red
New York, NY 1861



ST-E 51 [USCC 3099]
Almont, MI 1861



ST-E 52
1869



ST-E 50

Elaborate Stars



ST-E 53 [Simpson pg129-24]
Canaan, CT



ST-E 54
1861



ST-E 55 [USCC 3209]
Woodbury, CT 1861



ST-E 55A red
1861



ST-E 56
Waterbury, CT 9/30/1865



ST-E 56



updated April 12, 2026 (11:42am)