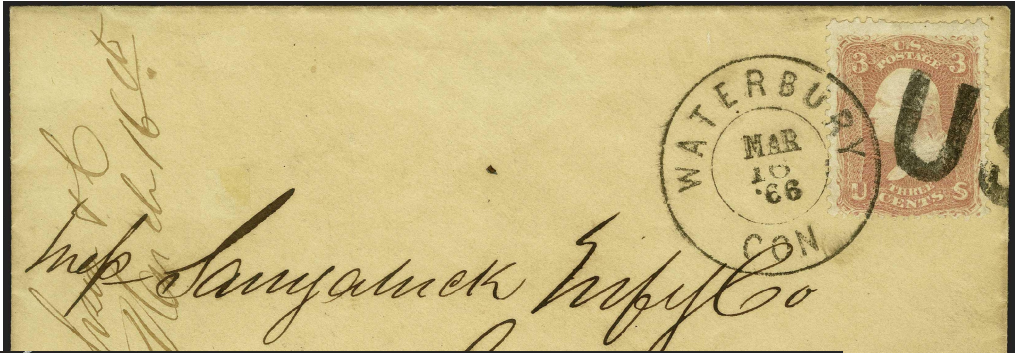


US



PT-US 1 [Rohloff M-3; USCC 5107]
Waterbury, CT □ 2/5/1866-3/19/1866



PT-US 1



PT-US 1



PT-US 1



PT-US 1

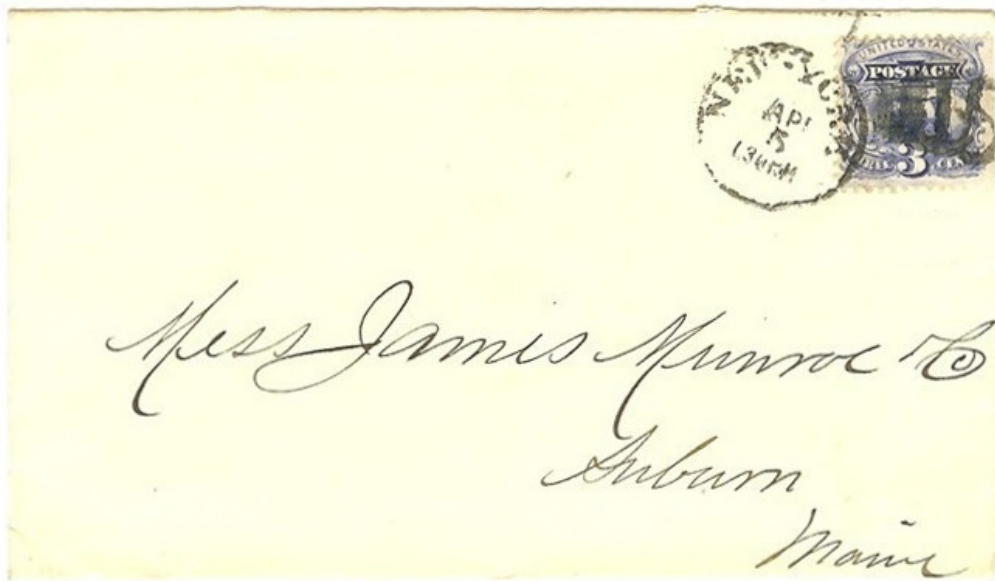
US



PT-US 2
New York, NY 1861-1869



PT-US 2



PT-US 2

US

PT-US 3
1861

US

PT-US 4
1861



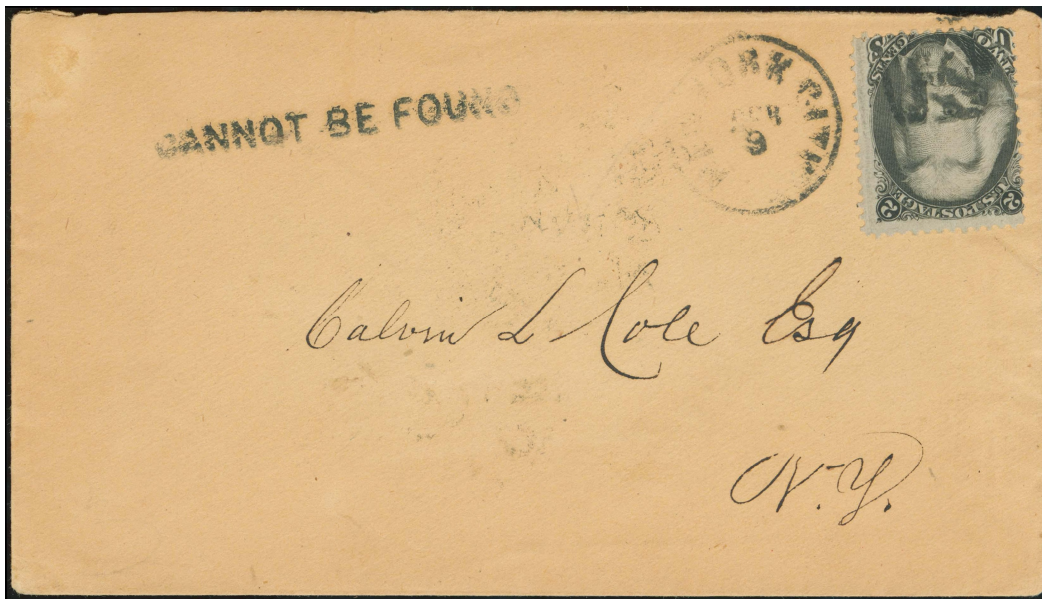
PT-US 4A
New York, NY 4/16/1870



PT-US 4B
New York, NY 1862



PT-US 4A



PT-US 4B

Patriotics - US

US



PT-US 5 [USCC 5104]
New Bern(e), NC 1861



PT-US 5

US

PT-US 6
New Bern(e), NC 1861

US



PT-US 7
Putnam, CT 1861

US



PT-US 8
1869



PT-US 8A
Burlington, VT 1861

US

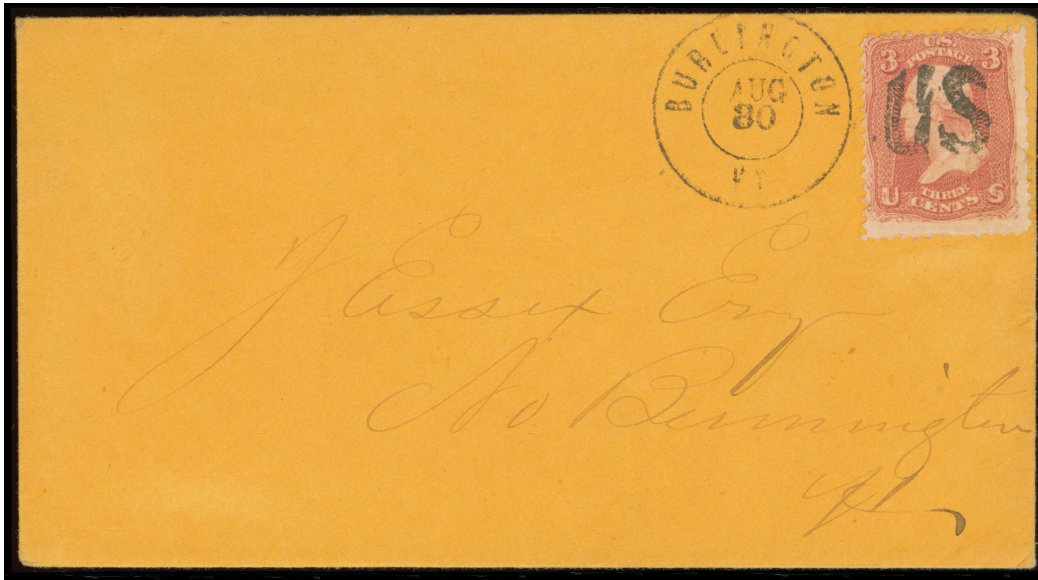


PT-US 9
Troy, NY 1861

US

compare with PT-US 100

PT-US 10
Mattapoisett, MA 1861

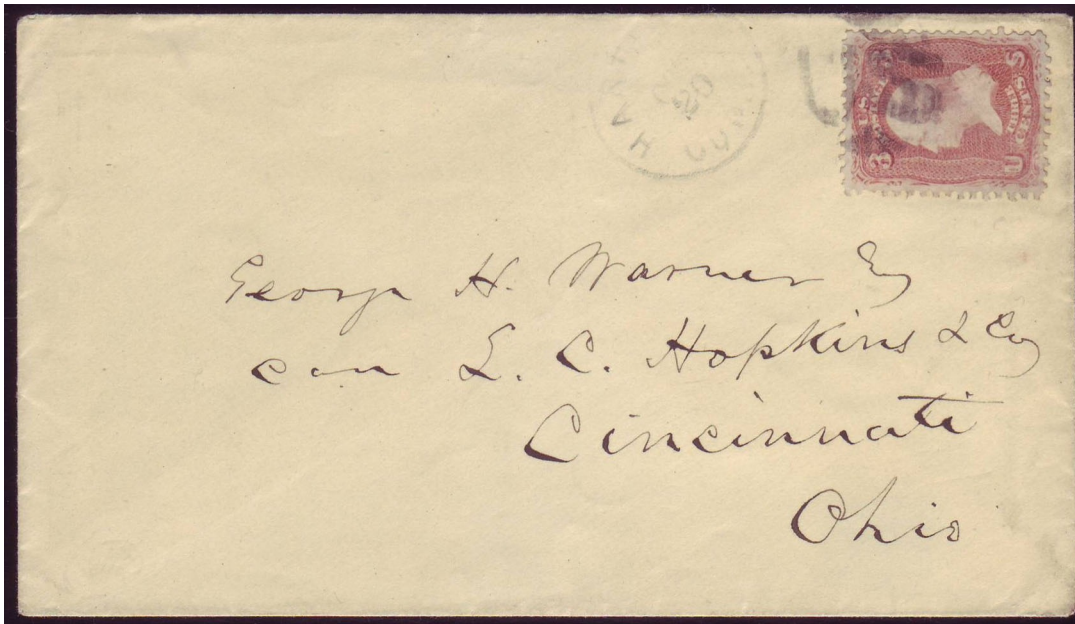


PT-US 8A



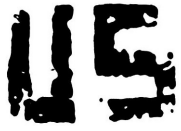
compare with PT-US 10

PT-US 10A [USCC 5084]
Hartford, CT □ 1861



PT-US 10A

Patriotics - US



PT-US10B
[Simpson pg153-2]
unknown town



PT-US 11
1861



PT-US 12
1867



PT-US 13
1861



compare with PT-E 12

PT-US 14
1861



PT-US 15
1861







PT-US 16
1861

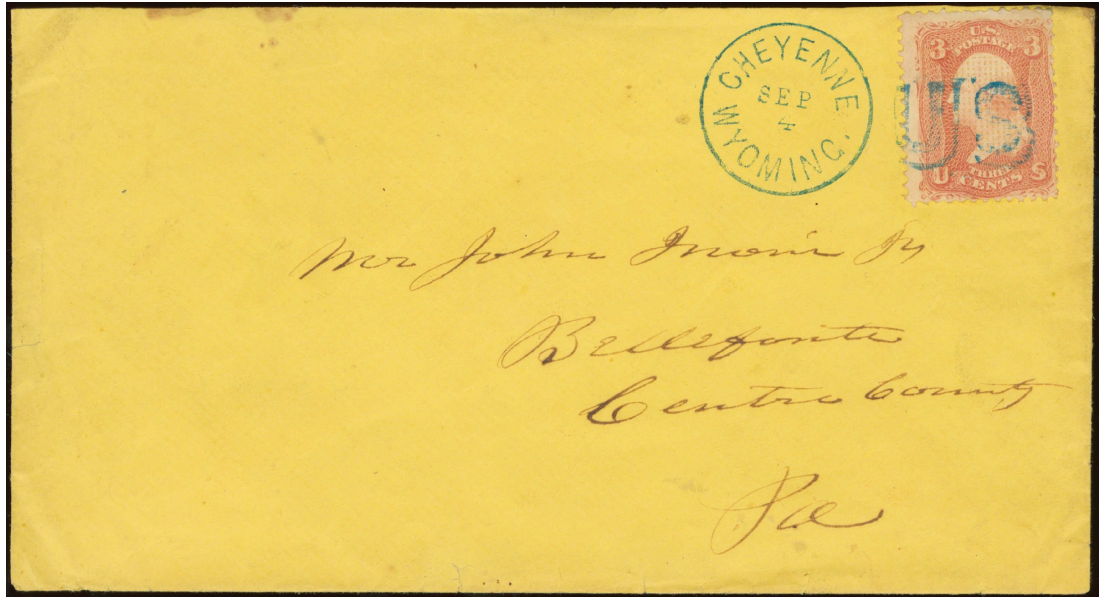


PT-US 17
1861

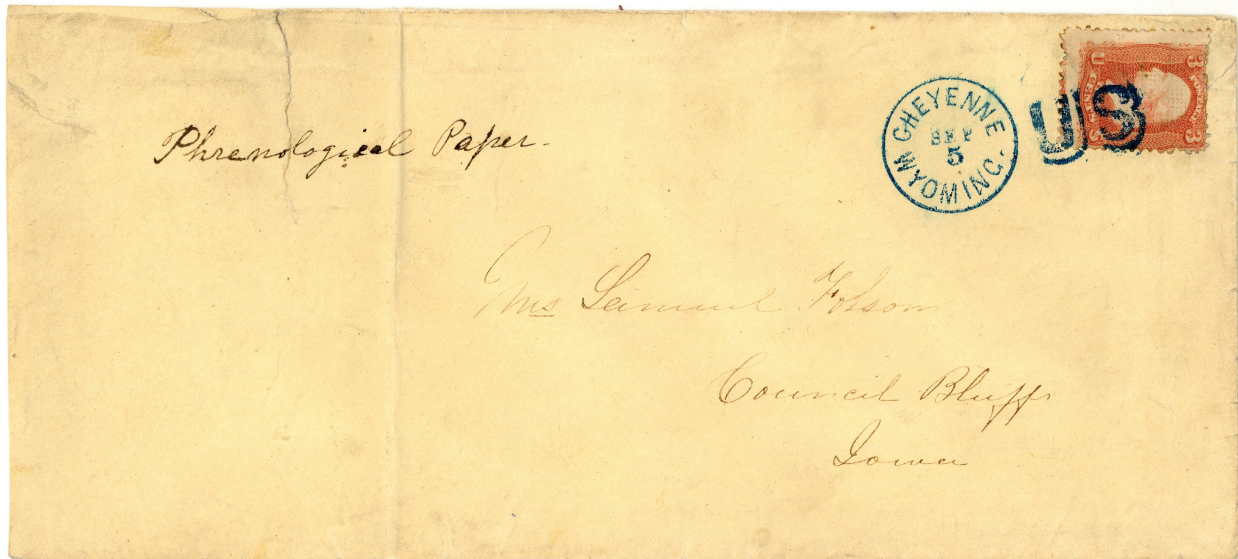


Patriotics - US

 <p>PT-US 18 1869</p>	 <p>PT-US 18A [USCC 5099] Cheyenne, Wyoming Territory 1868</p>	 <p>PT-US 19 blue 1861</p>	 <p>PT-US 19A 1867</p>	
--	---	---	--	--



PT-US 18A



PT-US 18A (approx. 70% actual size)

		 <p>PT-US 20 Union Springs, AL 1861-11/13/1869</p>
---	---	--

Patriotics - US

2 U

"S" reversed

PT-US 21
1861

U

PT-US 22
West Point, GA 1861

US



PT-US 23
Rutland, VT 1869

US

poor strike?

PT-US 23a
Rutland, VT(?) 1861



PT-US 23



PT-US 23

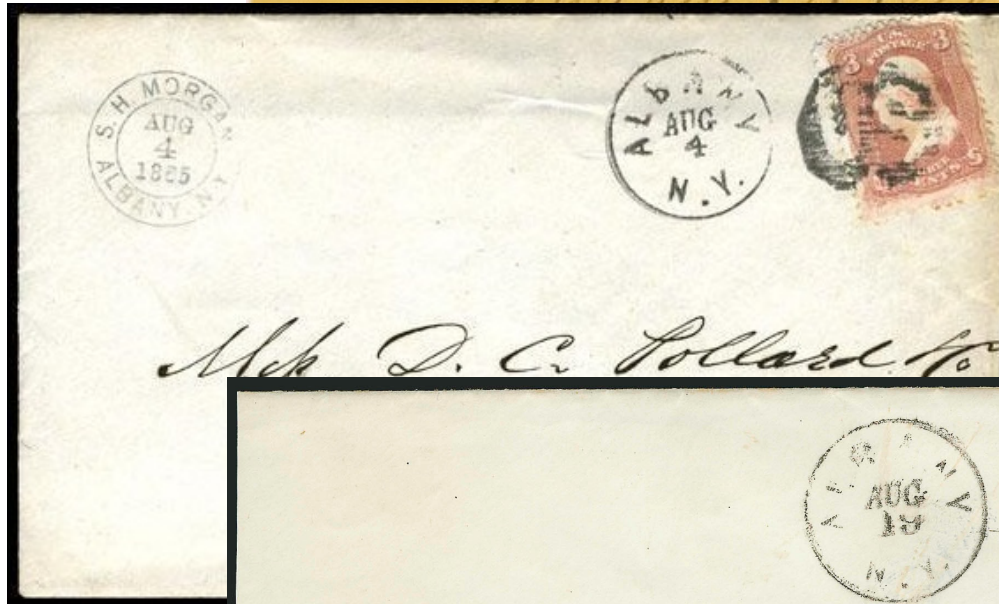
US



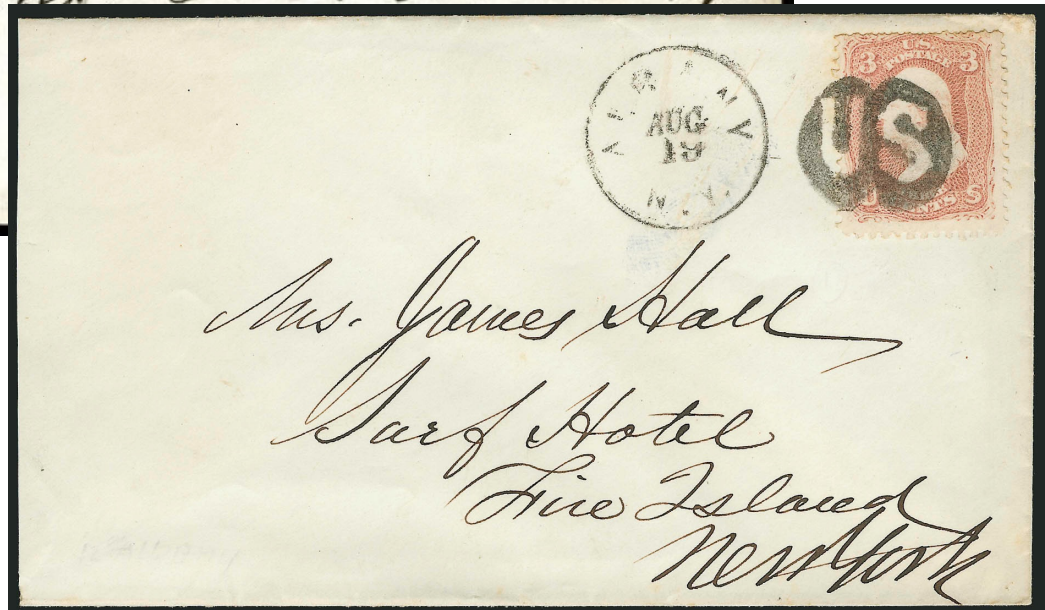
PT-US 25 [USCC 5041]
Albany, NY 8/4/1865



PT-US 25



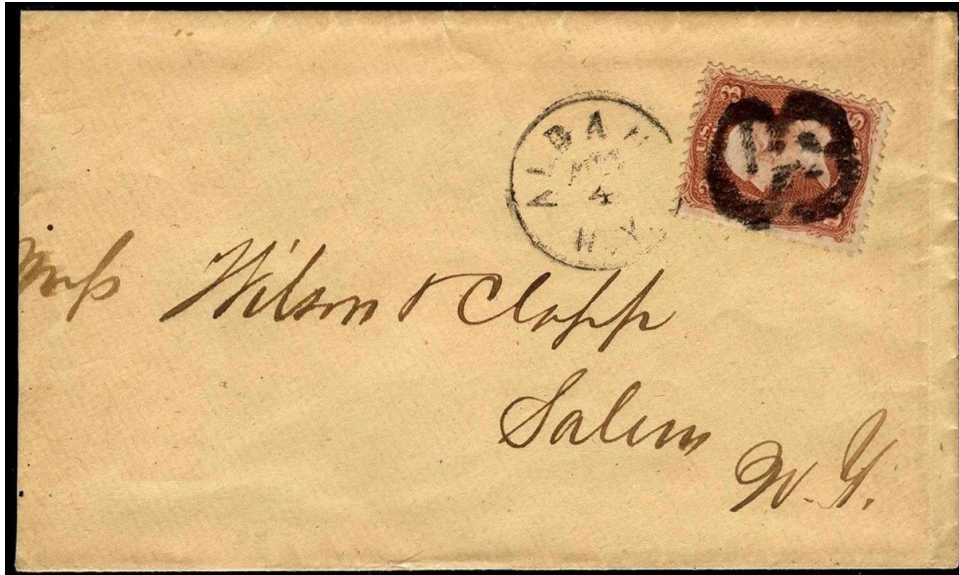
PT-US 25



PT-US 25



PT-US 25



PT-US 25

Patriotics - US



PT-US 26 [USCC 5037]
Shandaken, NY 1861



PT-US 27 blue [USCC 5033]
Auburn, NY 1861



PT-US 26



PT-US 28 [USCC 5034]
1861



"S" reversed



PT-US 29 [USCS 5179]
New Orleans, LA 1861

Patriotics - US



"S" reversed



PT-US 30
La Fayette, IN 11/20/1865



"S" reversed

PT-US 31
1867



PT-US 30



PT-US 30

Patriotics - US



PT-US 32 [USCC 5039]
Watkins, NY 1869



PT-US 33 [USCC 5040]
Saratoga Springs, NY 9/13/1866



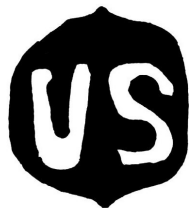
PT-US 33



PT-US 33



PT-US 34
Box Springs, GA 1861-1869



PT-US 35
Augusta, GA 1861-66



PT-US 36
Narragansett Pier, RI 1861

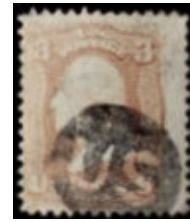
Patriotics - US



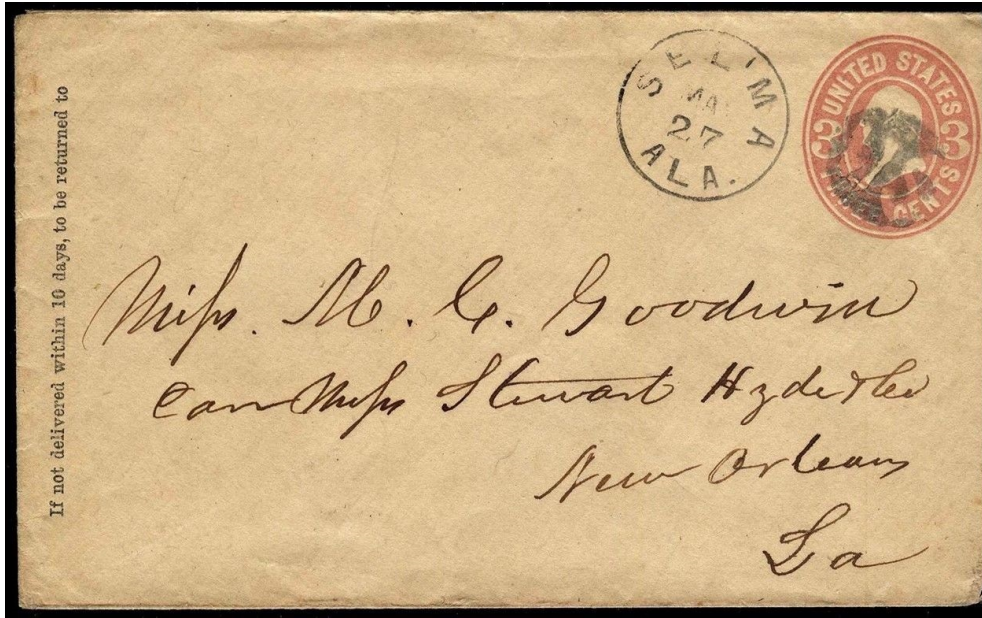
PT-US 37
Selma, AL 1867



PT-US 38 blue, black
Selma, AL 1861



PT-US 39
Plainfield, NJ 1861



If not delivered within 10 days, to be returned to

PT-US 37



PT-US 40
1869



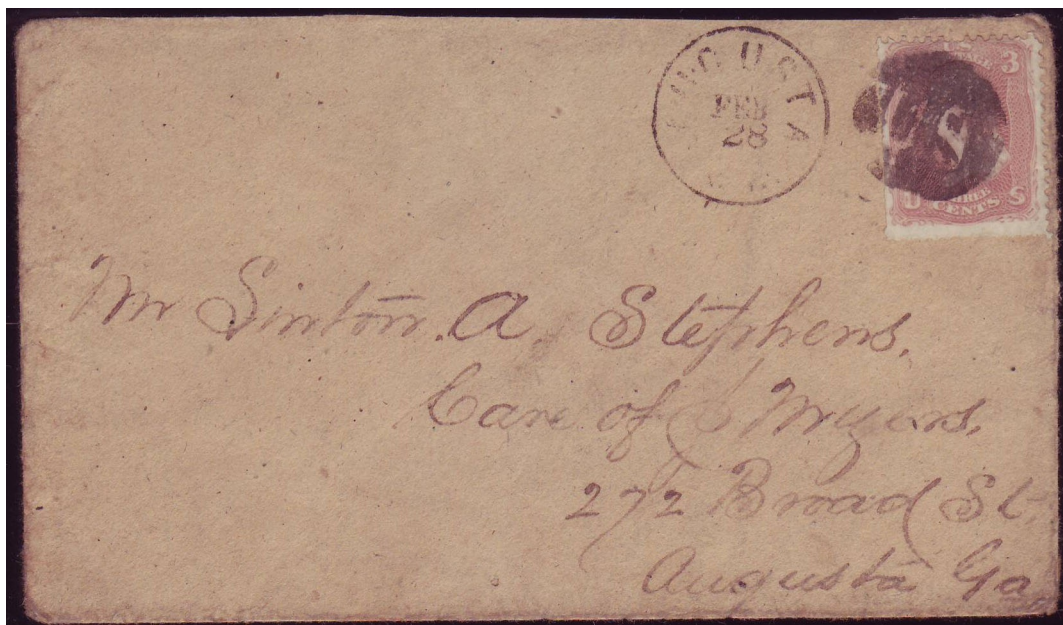
PT-US 40A
Augusta, GA 1861



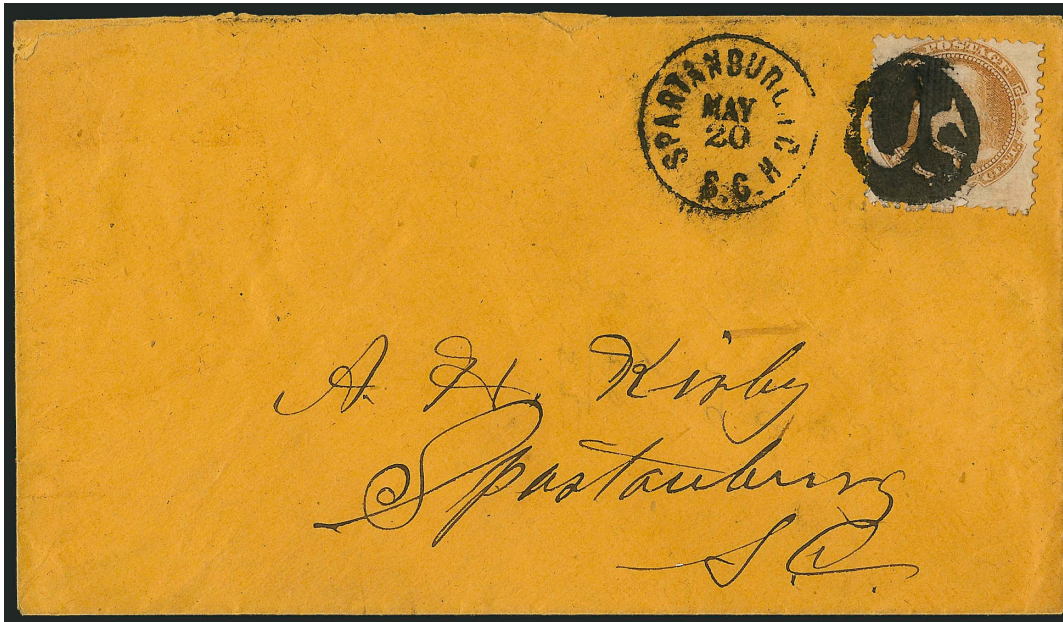
PT-US 40B [USCC 5046]
Spartanburg, SC 1861



PT-US 41
Cleveland, OH 1861



PT-US 40A



PT-US 40B



PT-US 42
1861



PT-US 42A
1861



PT-US 42B
1861



PT-US 43
Yazoo City, MS 1861



PT-US 44
San Francisco, CA 1867



PT-US 44



PT-US 45
1861



PT-US 46
1861



PT-US 47
Lone Rock, WI 1861



PT-US 48
1861-66



PT-US 48A
1867

Patriotics - US



PT-US 49 [USCC 5077]
Schooleys Mountain, NJ 1861



PT-US 49A
Fair Haven, CT 7/14/1865



PT-US 49A

Patriotics - US



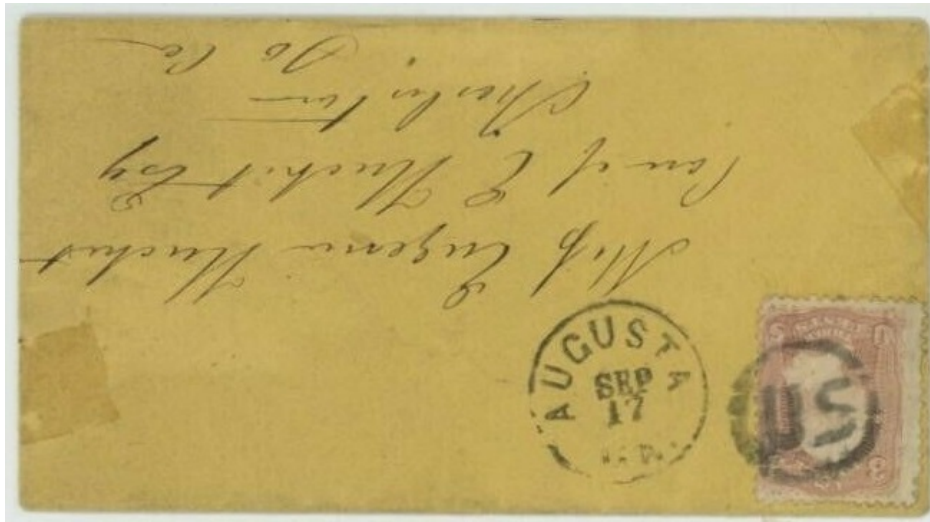
PT-US 50 [USCC 5075]
Augusta, GA 1861-67



PT-US 50



PT-US 50



PT-US 50



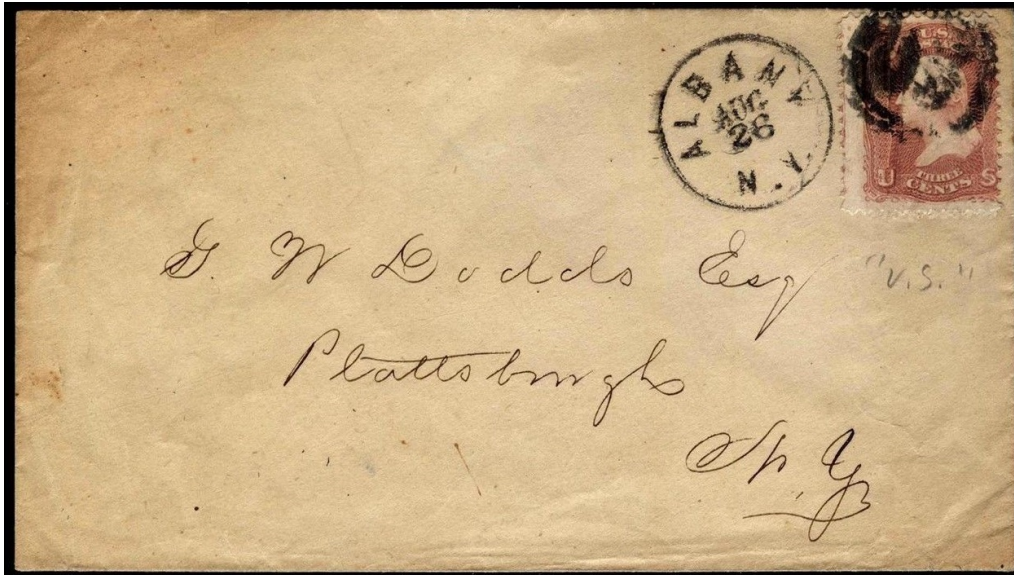
PT-US 51
Keeseville, NY 1861



PT-US 52
1869



PT-US 53 [USCC 5073]
Albany, NY 1861



PT-US 53



PT-US 54
Petersburgh, VA 1861

Patriotics - US



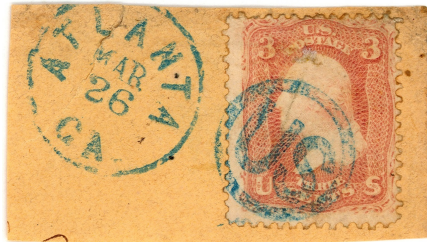
PT-US 55
1863



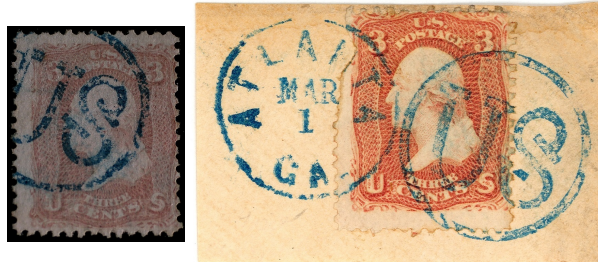
PT-US 56
St. Louis, MO 1866



PT-US 57



PT-US 56A blue
Atlanta, GA 1861



PT-US 57 blue, black [USCC 5069]
Atlanta, GA 1861

Patriotics - US



PT-US 58 blue
Atlanta, GA 1861



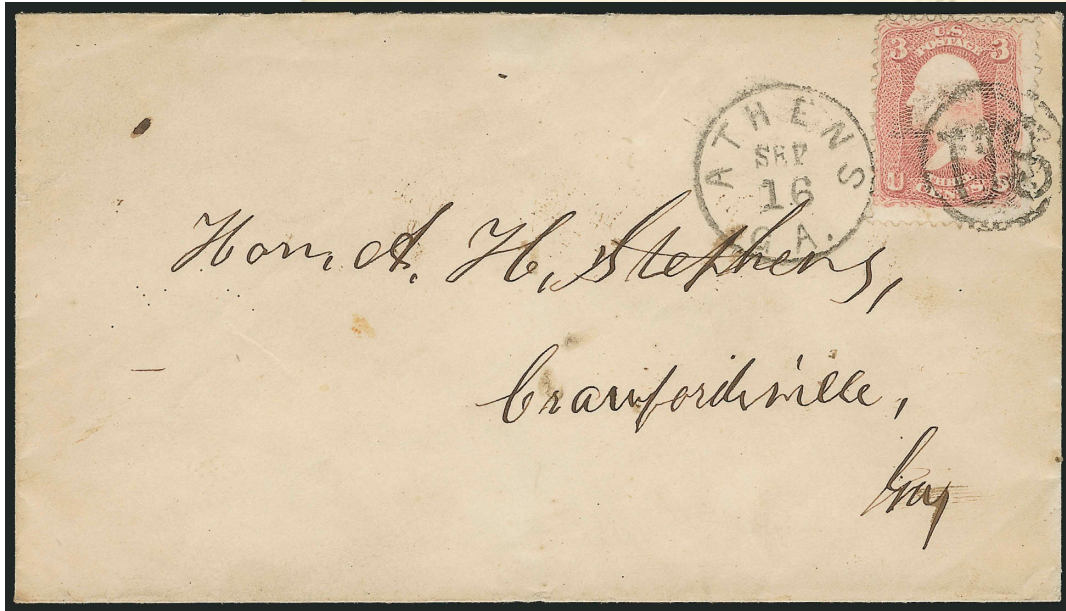
PT-US 59 [USCC 5068]
Athens, GA 1861



PT-US 60
Pomfret, CT 1861



PT-US 59



PT-US 59

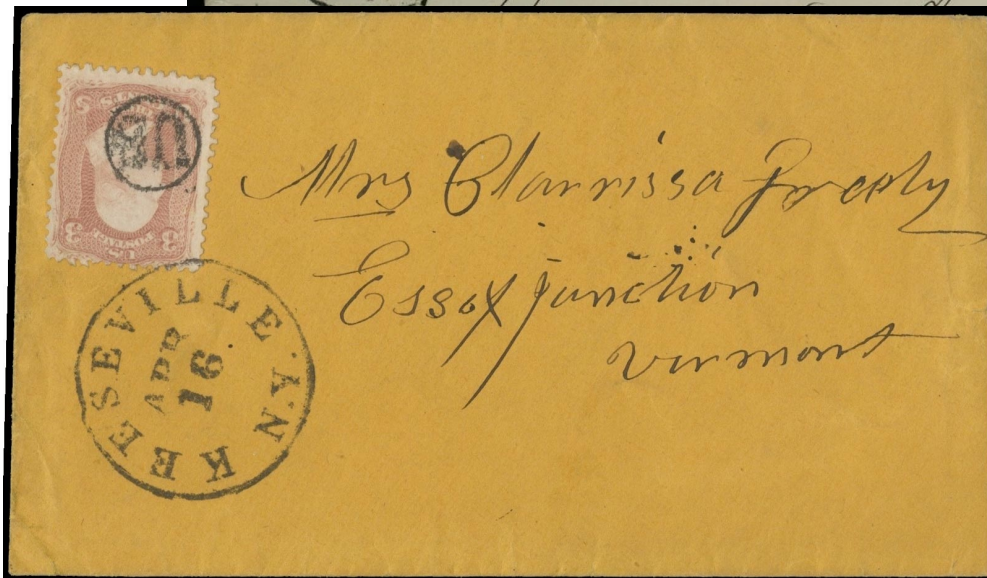
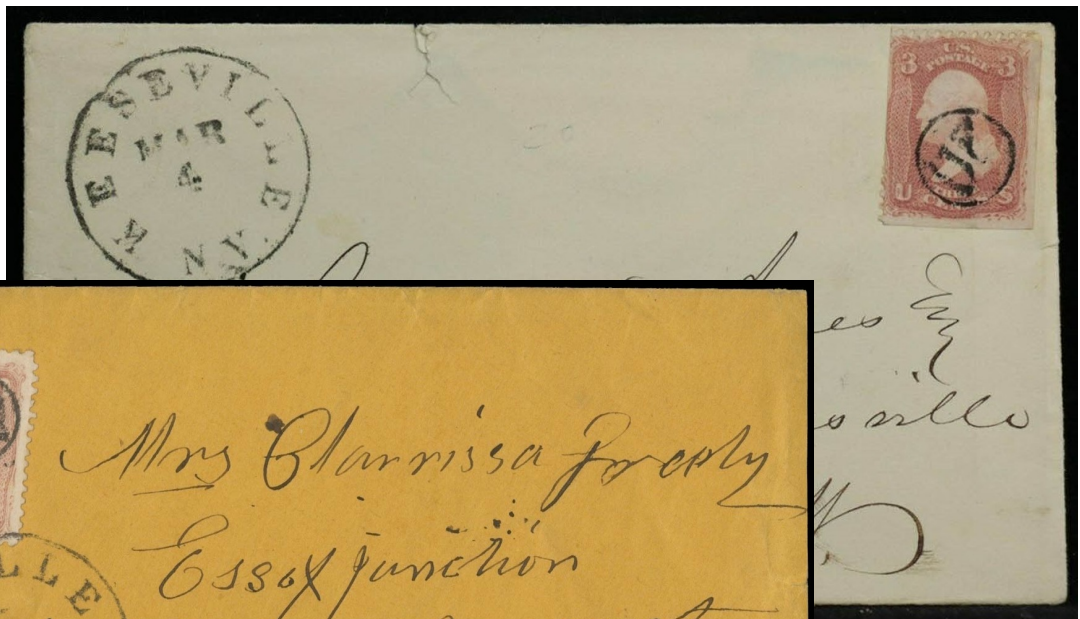


PT-US 60

Patriotics - US



PT-US 61 [USCC 5065]
Keeseville, NY 1861



PT-US 61

PT-US 61

Patriotics - US



PT-US 61A
Farmington, NH 1853



PT-US 62
Yarmouthport, MA 1861



PT-US 63 blue
Mount Wachusett, MA 1861



PT-US 64
1869



PT-US 65
1857



PT-US 61A



PT-US 66 [USCC 5130]
1861



PT-US 67 [USCC 5132]
1863



Fake?



updated December 7, 2025 (3:56pm)