

Trees



"pine tree"



PP-T 1 [USCC 1516]  
Media, PA 7/25/1865



PP-T 1

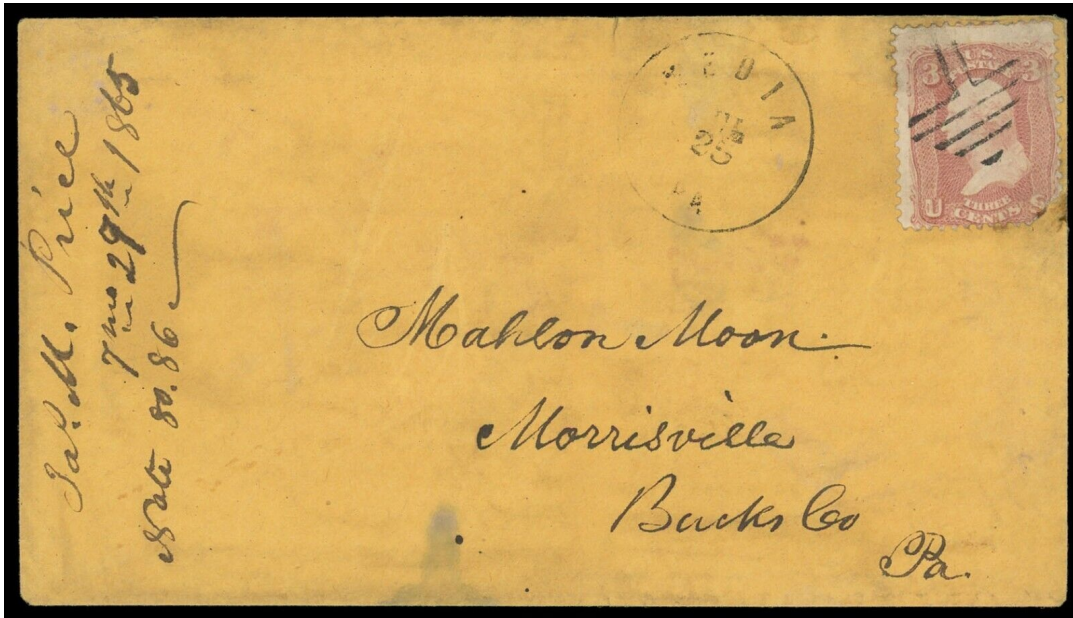


PP-T 1



PP-T 1

Trees



PP-T 1



"Christmas tree"

PP-T 2 [USCC 1517]  
Canton, MS 1851

Trees



"Charter Oak"



PP-T 3 [USCC 1511]

Thomaston, CT 9/14/1866-11/27/1866(?)



PP-T 3

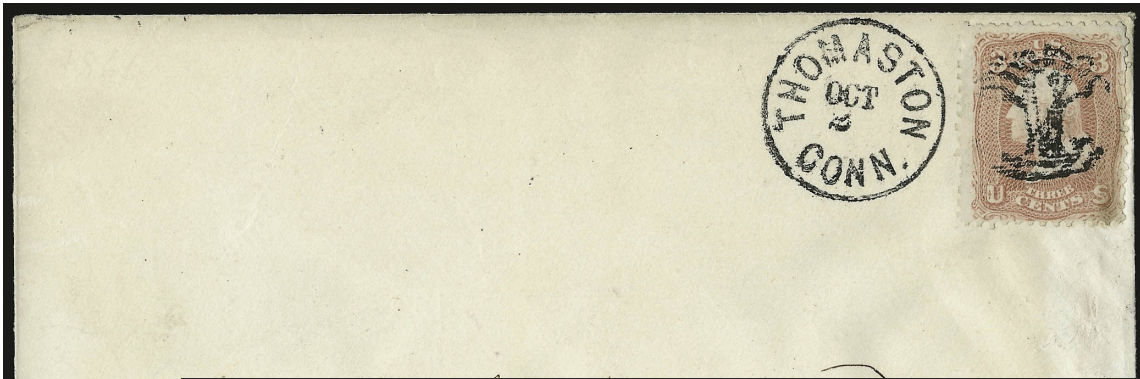


PP-T 3



PP-T 3

PP-T3



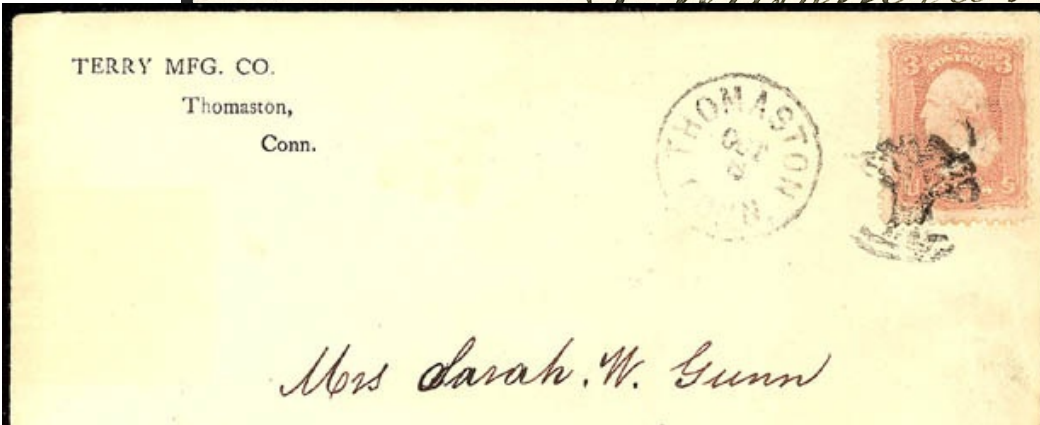
*Livingston  
County*

PP-T3



*Messrs, Woodsum, & Co.  
56 Washington St  
Boston  
Mass*

PP-T3



*Mrs Sarah W. Gunn*

*Livingston  
County*

PP-T3



*Messrs Woodsum & Co  
56 Washington St  
Boston  
Mass*

# Trees

 <p>"pine tree" PP-T 4 1861</p>	 <p>PP-T 5 Newark, NJ 1861</p>	 <p>PP-T 5A 1869</p>	 <p>PP-T 6 Norfolk, VA 1861</p>	
	 <p>PP-T 7 1869</p>	 <p>PP-T 8 1867</p>	 <p>PP-T 9 [Simpson pg141-171] Canton, MS 1869</p>	 <p>PP-T 10 [USCC 1512] 1861</p>
 <p>PP-T 11 1867</p>				



updated August 17, 2025 (6:19pm)