

Flowers

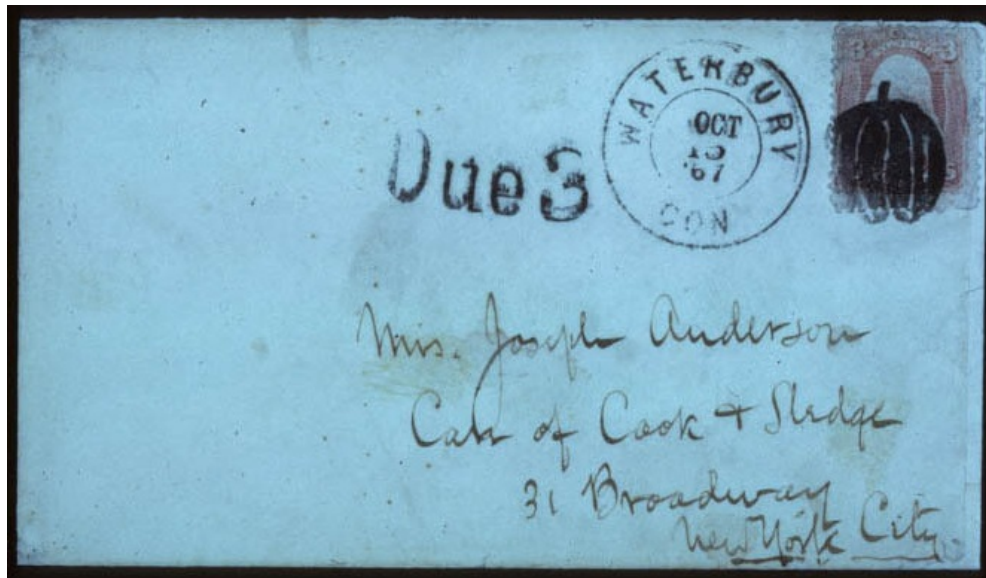


"tulip"

PP-FI 1 [Rohloff F-4]  
Waterbury, CT 11/15/1867



PP-FI 1



PP-FI 1

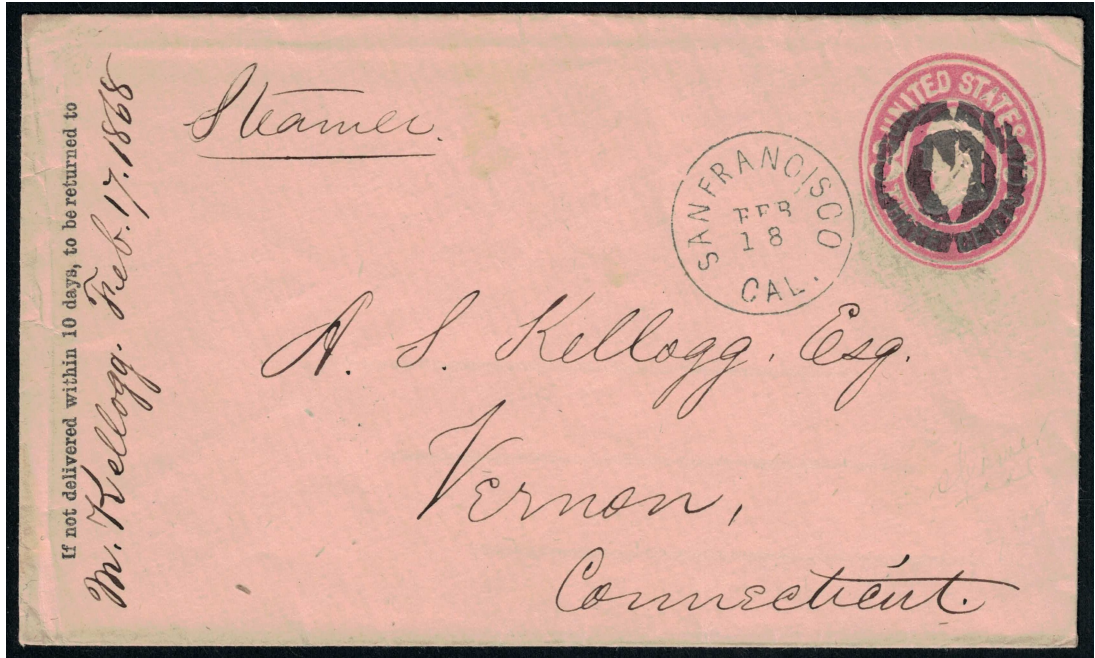
Flowers



"tulip"



PP-F12  
San Francisco, CA 2/18/1868



PP-F12



PP-F12 & ST-4P2F

Flowers



"rose"



PP-FI 3 [USCC 1491]  
Amherst, MA □ 7/23/1863-8/6/1866



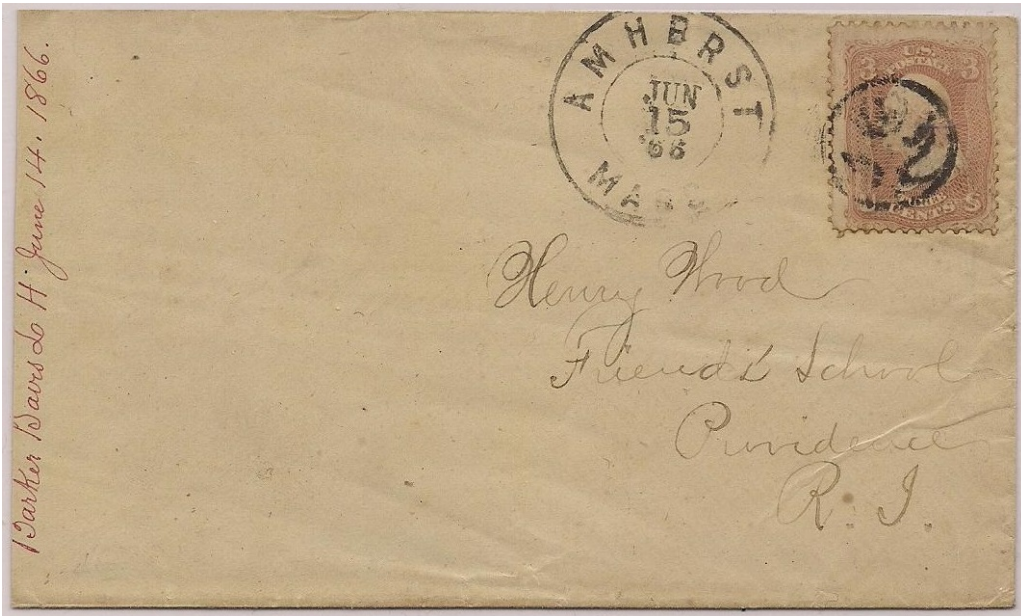
PP-FI 3



PP-FI 3



PP-FI 3



*Barker Davis to H. June 14, 1866.*

PP-F13



PP-F13



*Rec'd Aug 7th. 1866. A.B.*

PP-F13

Flowers



PP-FI 3A [USCC 1490]  
Amherst, MA 8/10/1863



"thistle"



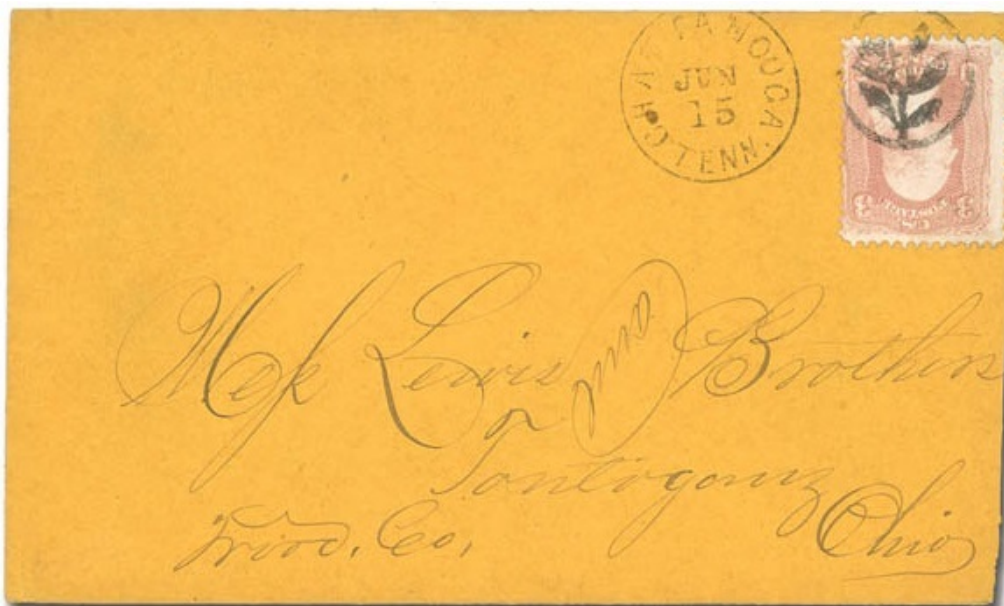
PP-FI 4  
Amherst, MA 1861



PP-FI 5  
Chattanooga, TN 1861

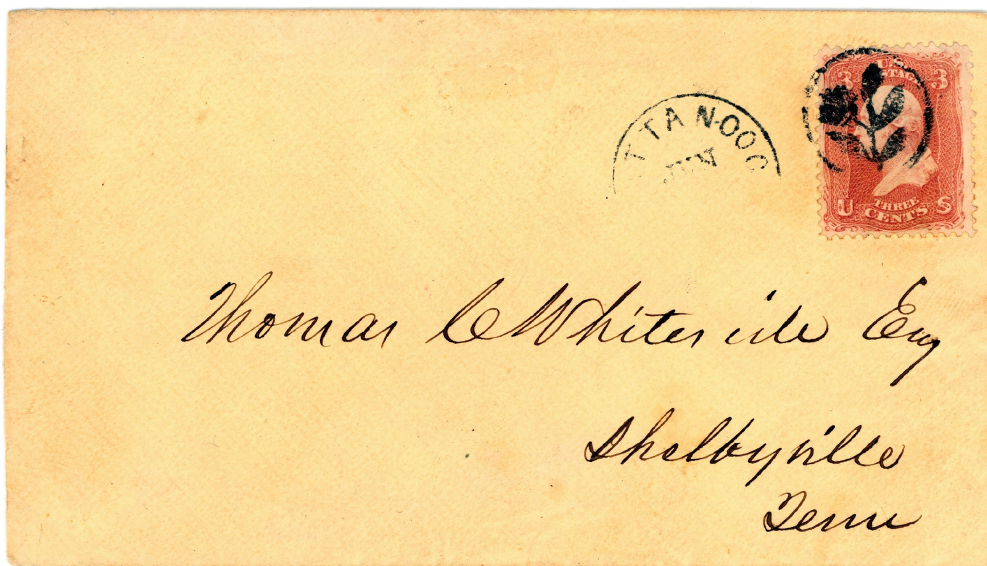


PP-FI 6  
1869



PP-FI 5

*Wm Lewis & Brother  
Santiago, Ohio  
Wood, Co.*



PP-FI 5

*Thomas C White etc Esq  
Shelbyville  
Tenn*

Flowers



PP-FI 7  
1845



"flowers"  
PP-FI 8  
San Francisco, CA 1861



"rose"



PP-FI 9 [USCC 1497; Rohloff F-2]  
Waterbury, CT 11/23/1869-12/10/1869



PP-FI 9

Flowers



"stemmed rose"

PP-FI 10 [Rohloff F-1]  
Waterbury, CT 1869



"rosebud"

PP-FI 11  
White Lake, NY 1861



PP-FI 12  
1861



Chrysanthemum"



PP-FI 13 [USCC 1084; Rohloff F-3]  
Waterbury, CT 1/21/1870



PP-FI 14  
1869

Flowers



"holly sprig"

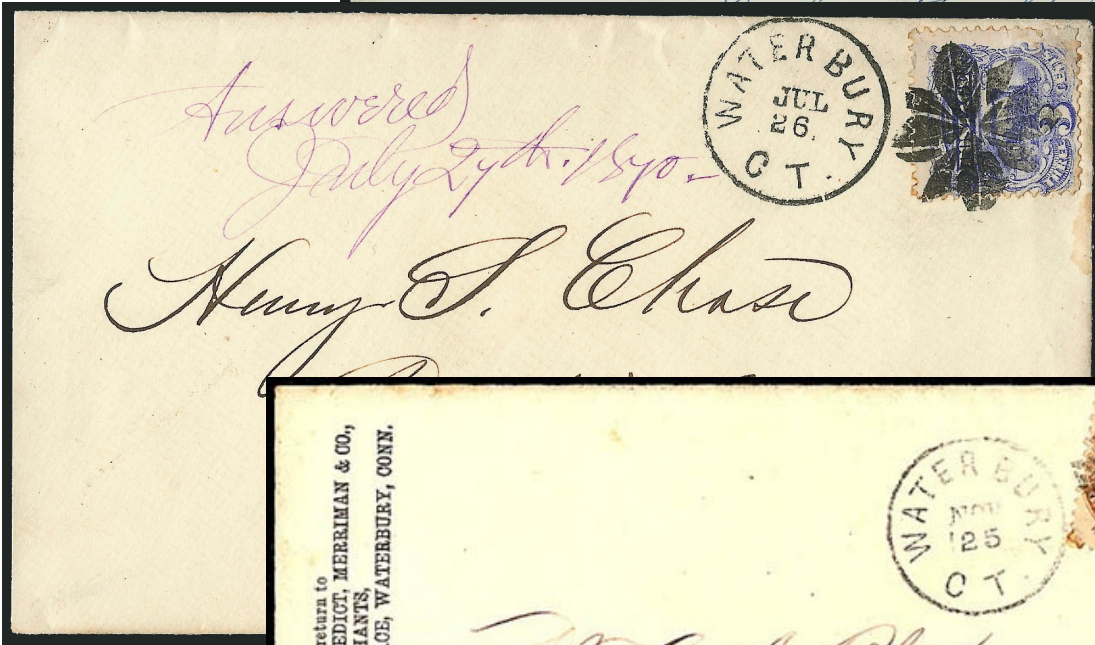


PP-FI 15 [Rohloff L-4; USCC 1761]  
Waterbury, CT 11/25/1869-7/26/1870



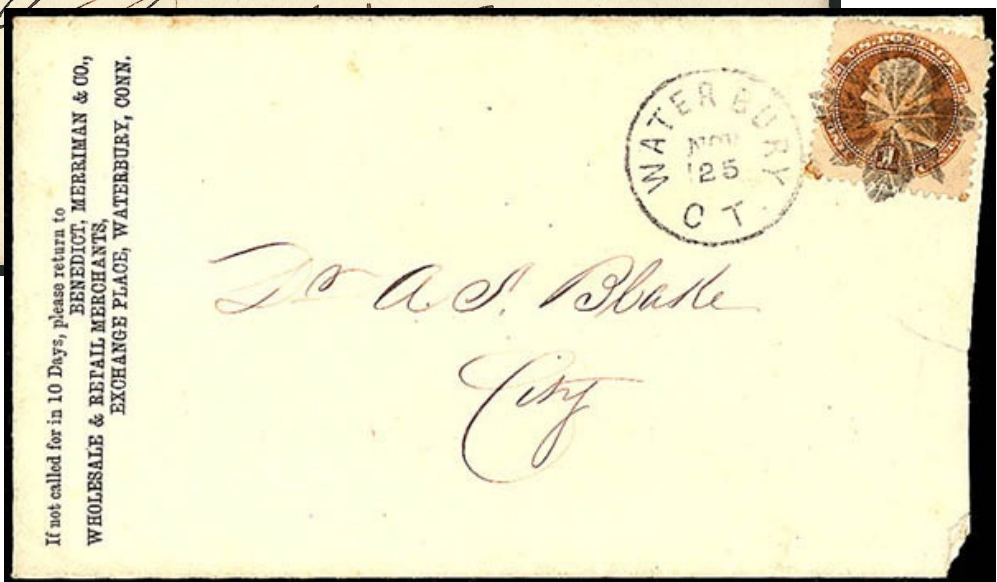
*Mr. Ransom Holley*

PP-FI 15



*Answered  
July 27th 1870  
Henry S. Chase*

PP-FI 15



If not called for in 10 Days, please return to  
BENEDICT, MERRIMAN & CO.,  
WHOLESALE & RETAIL MERCHANTS,  
EXCHANGE PLACE, WATERBURY, CONN.

*To A. S. Blake  
City*

PP-FI 15



PP-FI 15



PP-FI 15



PP-FI 15



PP-FI 16  
Horicon, WI 1861



PP-FI 17  
Hartford, CT 1861

Flowers



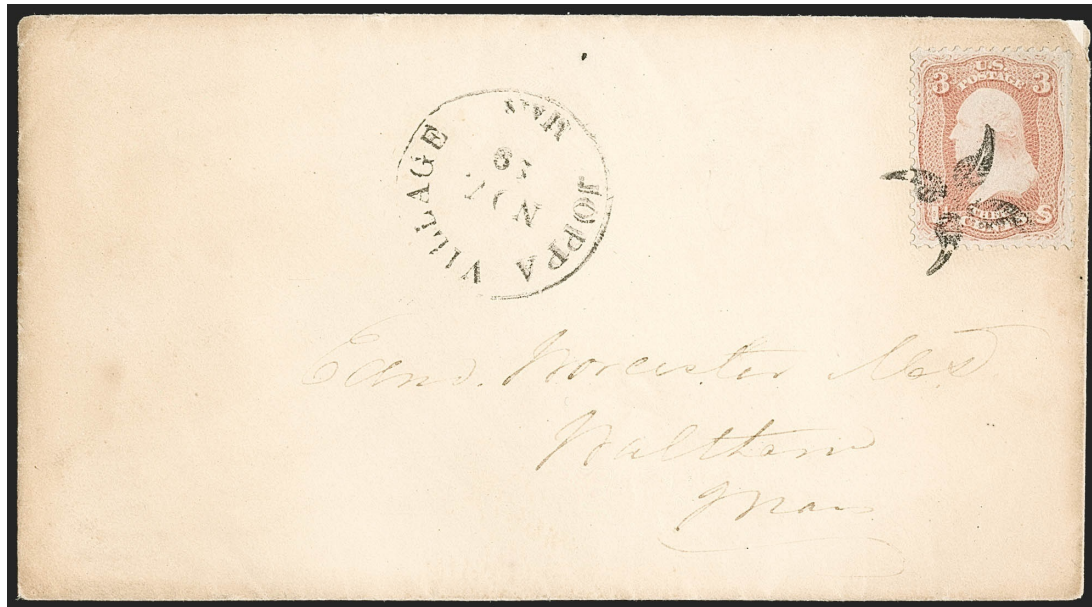
PP-FI 18  
Spartanburgh Courthouse, SC 1869



PP-FI 19 [USCC 1763]  
Joppa Village, MA 1861



PP-FI 19



PP-FI 19

Flowers



PP-FI 20 [USCC1762]  
Joppa Village, MA 1861

Flowers



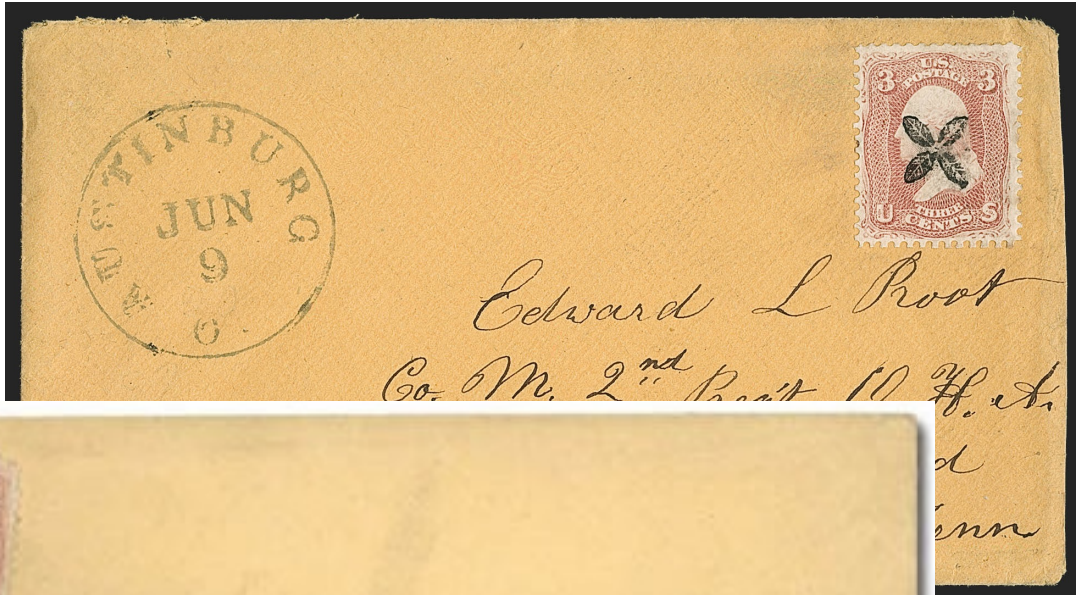
PP-FI 20A  
[Simpson pg137-122]  
Joppa Village, MA



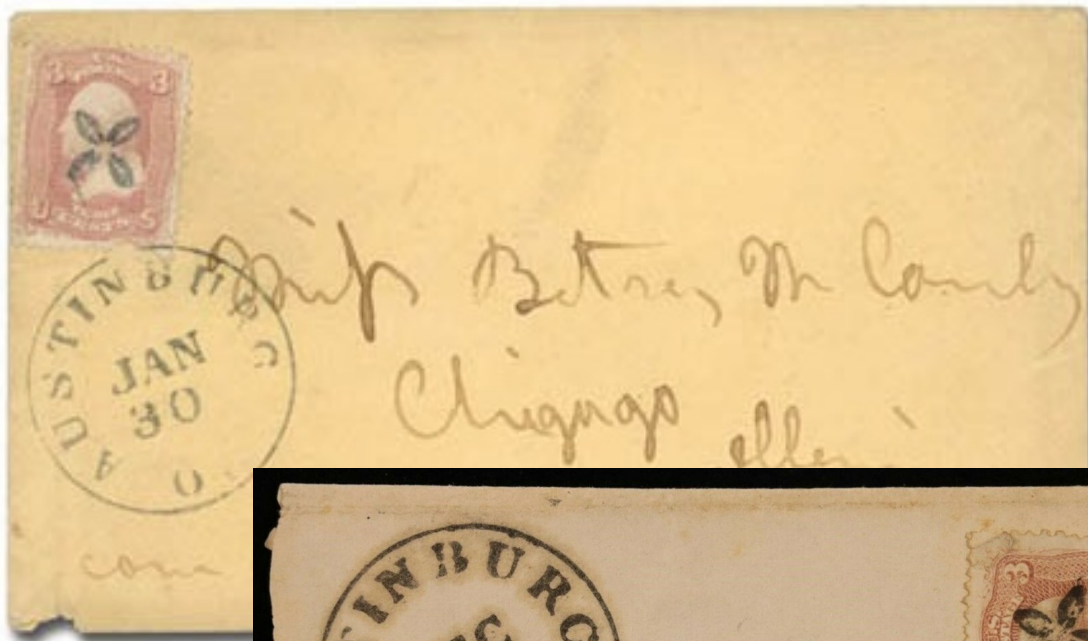
PP-FI 21  
Austinburg, OH □ 1861



PP-FI 22  
Dartford, WI □ 1861



PP-FI 21



PP-FI 21



PP-FI 21

Flowers



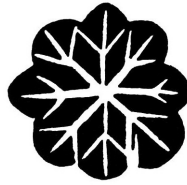
PP-FI 23 [USCC 3250]  
Ridgefield, CT 1861



PP-FI 24  
Lansing, MI 1861-69



PP-FI 25  
1869



compare with GE-R 39

PP-FI 26  
Waterbury(?), CT 1861

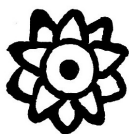


PP-FI 26

Flowers



"Daisy"



"Daisy"



PP-FI 27 [USCC 3183]  
Cornwall, VT 1861



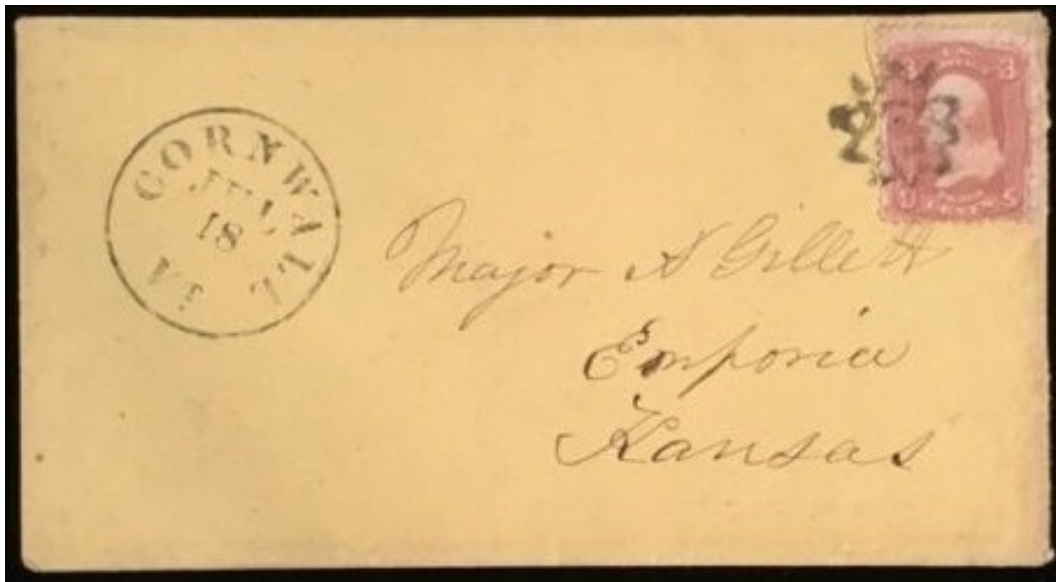
PP-FI27



PP-FI27



PP-FI27



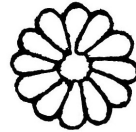
PP-FI 27



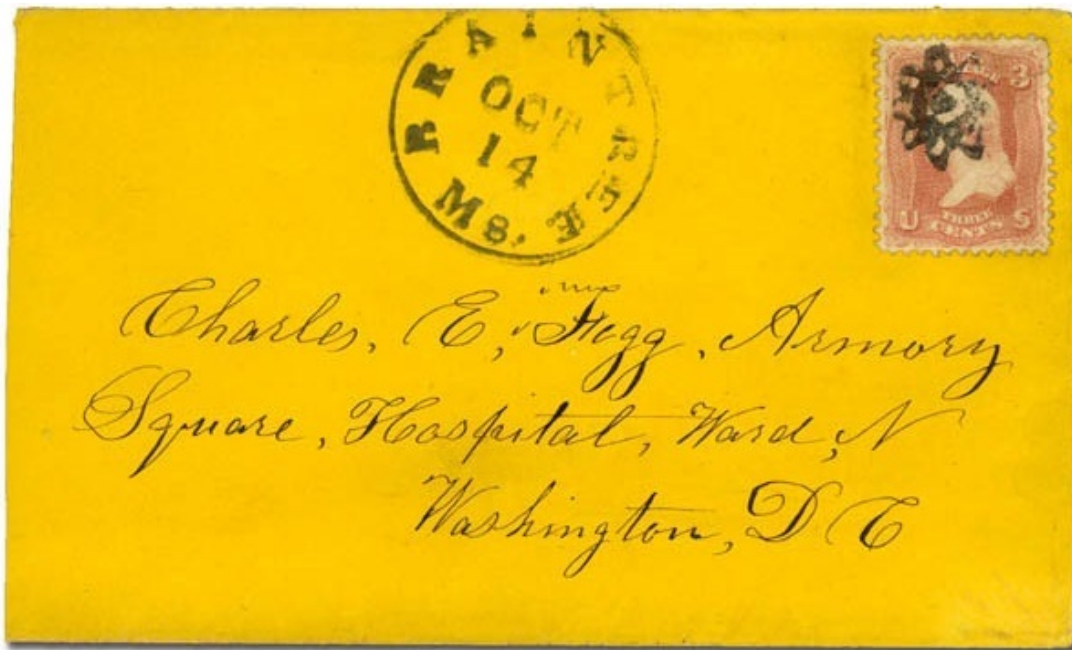
PP-FI 27B  
Braintree, MA 1861



PP-FI 27C [USCC 1492]  
Cornwall, VT 1861



PP-FI 28 [USCC 3610]  
1861-67



PP-FI 27B

Flowers



PP-FI 29  
Martinville, IL 1869



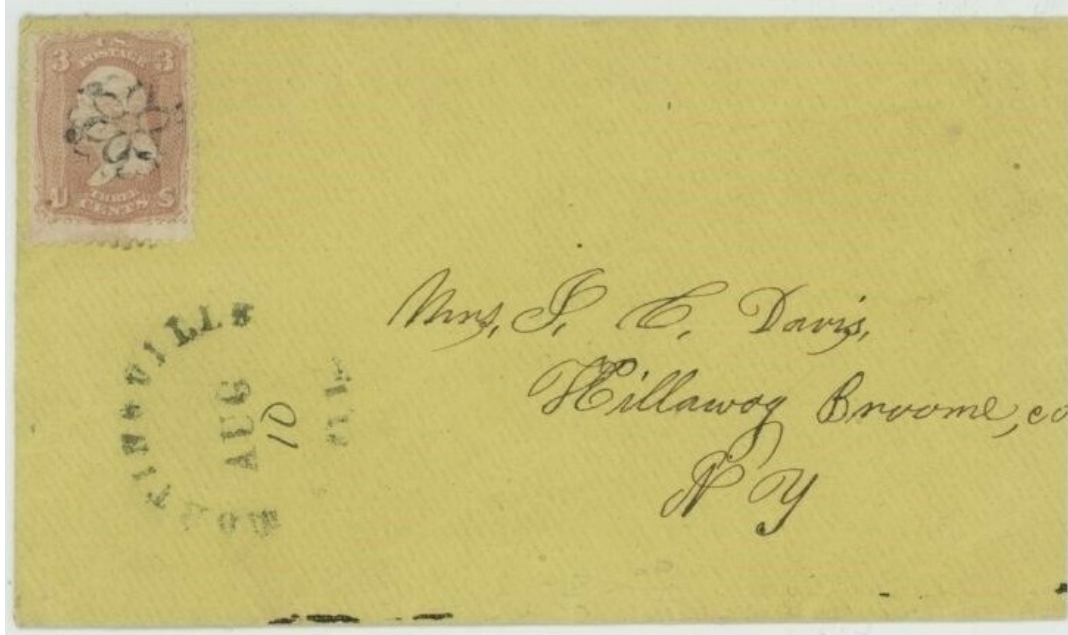
PP-FI 29A  
Sangerfield, NY 1861



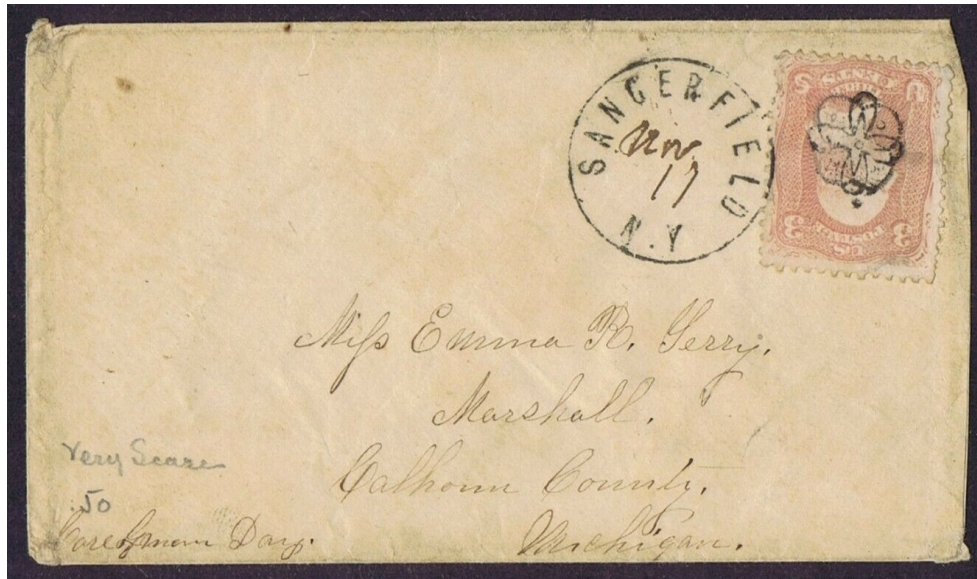
PP-FI 30  
1869



PP-FI 31  
Spartanburgh Courthouse, SC 1863-1869



PP-FI 29



PP-FI 29A

Flowers

 <p>Five petals</p> <p>PP-FI 32 Lansing, MI 1861</p>	 <p>Eight petals</p> <p>PP-FI 32A 1861</p>	 <p>PP-FI 33 1869</p>	 <p>PP-FI 34 [USCC 3037] Prairie Lee, TX 1869</p>	 <p>PP-FI 34A 1861</p>
 <p>PP-FI 35 Troy, NY 1861</p>	 <p>PP-FI 36 New York, NY 1861</p>	  <p>"plant" or "candle flame"</p> <p>PP-FI 37 [USCC 759] Kennebunkport, ME 1861-1867</p>	 <p>worn(?)</p> <p>PP-FI 38 Kennebunkport, ME 1861-64</p>	
 <p>PP-FI 39 New York, NY 1/12/1869</p>	 <p>PP-FI 40 [USCC 3505] 1869</p>	 <p>PP-FI 41 1861</p>	 <p>PP-FI 42 [USCC 1495] 1861</p>	 <p>PP-FI 43 blue [USCC 1501] Grass Valley, CA 1861</p>



# Flowers



PP-FI 44 [USCC 1502]  
Waterbury, CT 1869



PP-FI 45  
1869



updated August 25, 2025 (11:06am)