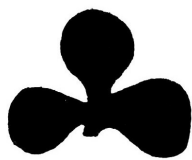


Pictorials - Clover



PP-C 1  
Cambridge, MA 1861



PP-C 1A  
1869



PP-C 2  
1861



PP-C 3  
Danvers, MA 1861-66



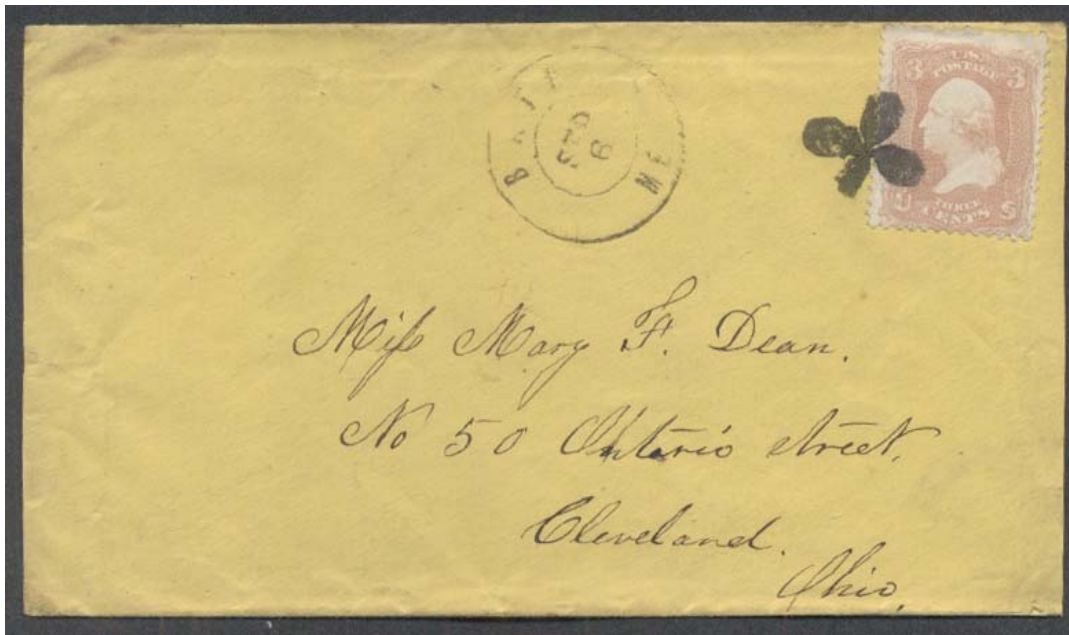
PP-C1



PP-C1



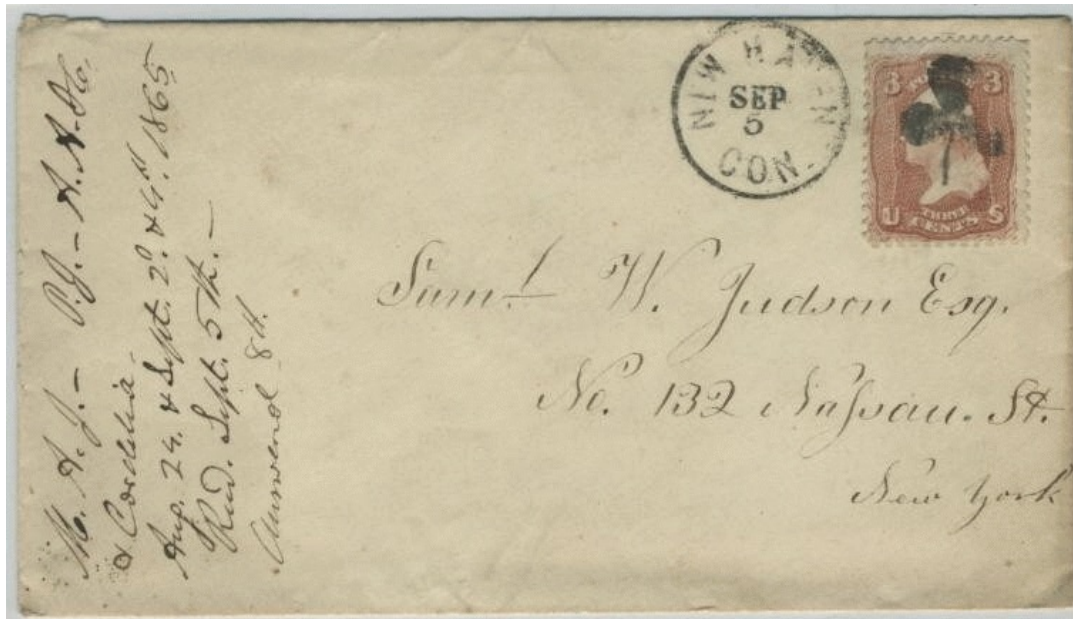
PP-C 3A  
Bath, ME 1861



PP-C 3A



PP-C 4  
New Haven, CT 1865



PP-C 4

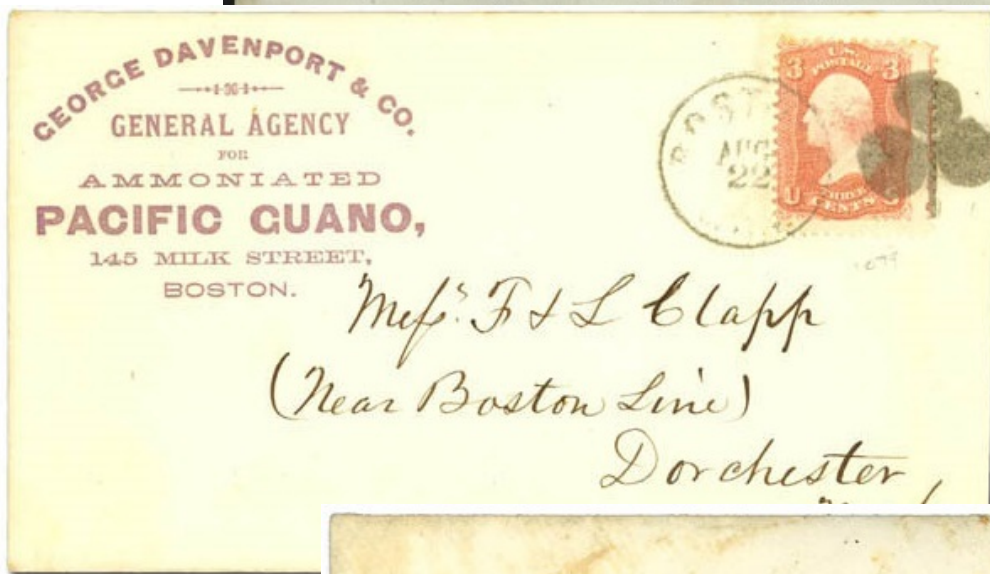
Pictorials - Clover



PP-C 5 [USCC 1748; Blake-Davis 1079]  
Boston, MA □ 1861



PP-C 5



PP-C 5



PP-C 5



PP-C-5



PP-C-5



PP-C-5

Pictorials - Clover



PP-C 6  
Boston, MA 1861



PP-C 7  
Boston, MA(?) 1861



PP-C 7A [USCC 1781]  
Rochester, MA 1861



PP-C 7B  
1861



PP-C 7A



PP-C 8 [USCC 1735]  
Halifax, MA 1861



PP-C 8A  
Bridgeport CT 1/1870



PP-C 9 green [USCC 1779]  
Big Flats, NY 1861



PP-C 8A

Pictorials - Clover



PP-C 10 red  
1861-66



PP-C 10A  
1861



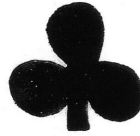
PP-C 10B  
1861



PP-C 10C  
1861



PP-C 11 blue  
La Porte, IN  1861



PP-C 11A blue [USCC 1777]  
La Porte, IN  1861

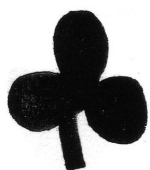


PP-C 11

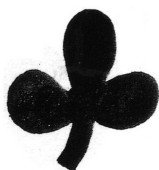
Pictorials - Clover



PP-C 11B [USCC 1782]  
Windsor, CT 1861



PP-C 11C blue [USCC 1783]  
Albany, NY 1861



PP-C 11D blue [USCC 1785]  
Covington, KY 1861



PP-C 11E  
Covington, KY 1/20/1870



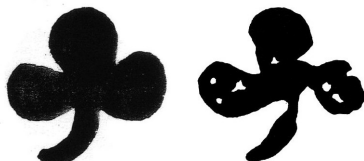
PP-C 11B



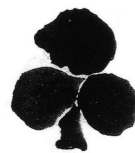
PP-C 11E



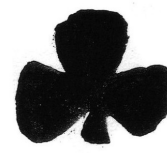
PP-C 12 blue [USCC 1775]  
Galva, IL 1861



PP-C 13 blue [USCC 1786]  
New York, NY 1862-4/1/1870(?)



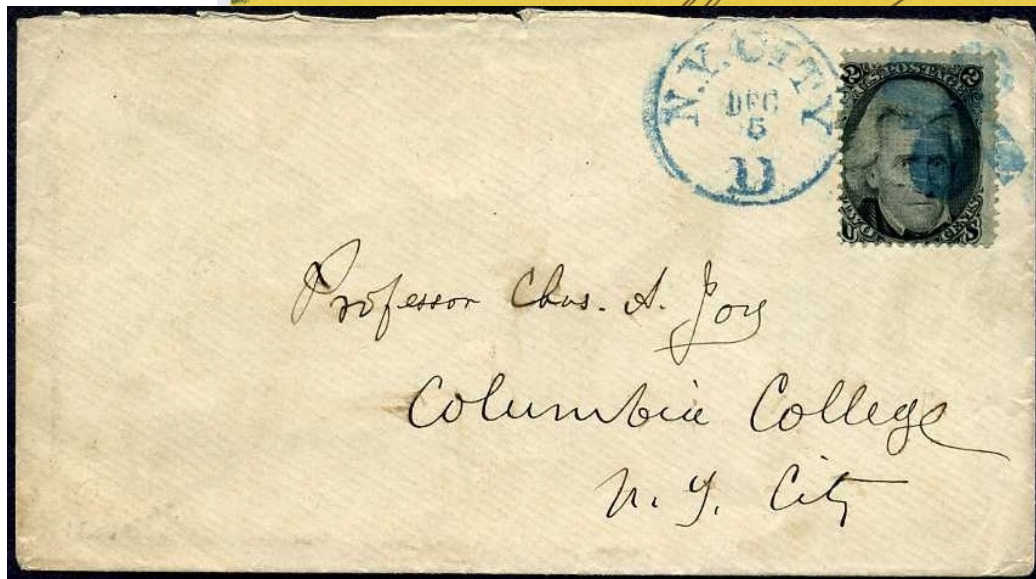
PP-C 13A blue [USCC 1780]  
1861



PP-C 13B [USCC 1787]  
1861



PP-C 13



PP-C 13



PP-C 14  
Aurora, NY 1866



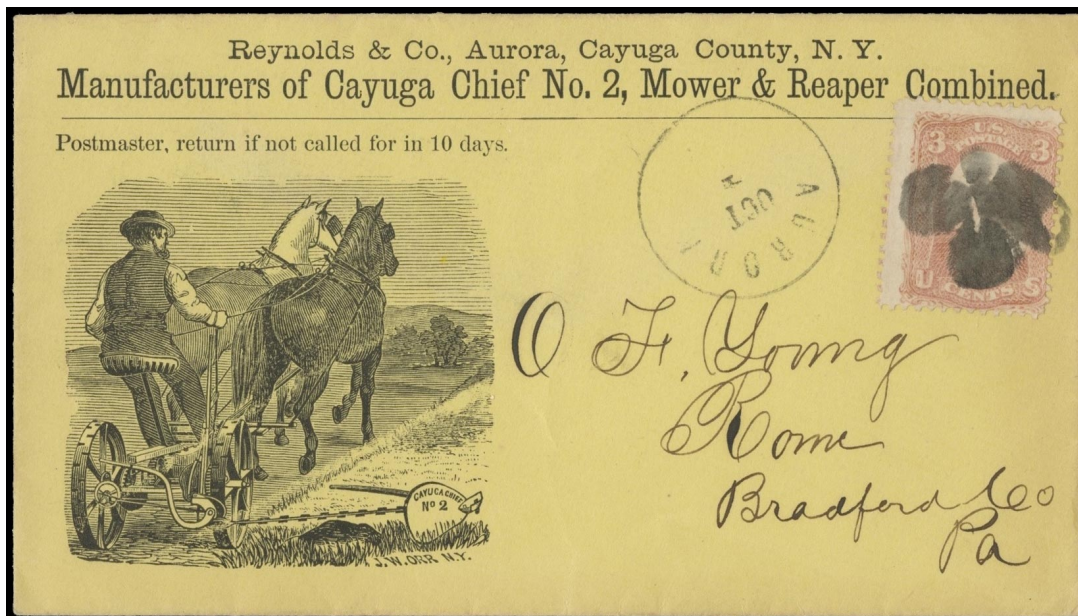
PP-C 15  
Aurora, NY 1861



PP-C 15A blue [USCC 1789]  
1861



PP-C 16  
1861



PP-C 14

Pictorials - Clover



**PP-C 16A**  
[Simpson pg135-76]  
Cloverport, KY



**PP-C 17**  
Burlington, IA 1861



**PP-C 18**  
Point Pleasant, IL 1861



**PP-C 19**  
Alton, IL 1861



PP-C 17



PP-C 19



**PP-C 20**  
1861-1869










**PP-C 20A**  
Marshall, TX 5/16/1869

Pictorials - Clover



PP-C 20A

 <p>PP-C 21 [USCC 1773] Jacksonport, WI 1869</p>	 <p>PP-C 22 1869</p>	 <p>PP-C 23 1869</p>	 <p>PP-C 23A blue [USCC 1771] Memphis, TN 1861</p>
 <p>PP-C 23B [USCC 1772] Columbus, GA 1861</p>	 <p>PP-C 23C [USCC 1776] Quincy, MA 1861</p>	 <p>PP-C 23D [USCC 1774] Norwich, NY 1861</p>	



PP-C 23B

Pictorials - Clover



PP-C 24 blue  
Indianapolis, IN 1861



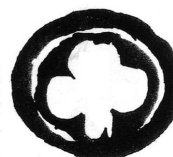
PP-C 24



worn strike



PP-C 25  
Albany, NY 1861



PP-C 25A [USCC 1756]  
Albany, NY 1861



PP-C 25B [USCC 1757]  
Indianapolis, IN 1861

Pictorials - Clover



PP-C 27  
Bangor, ME 1861



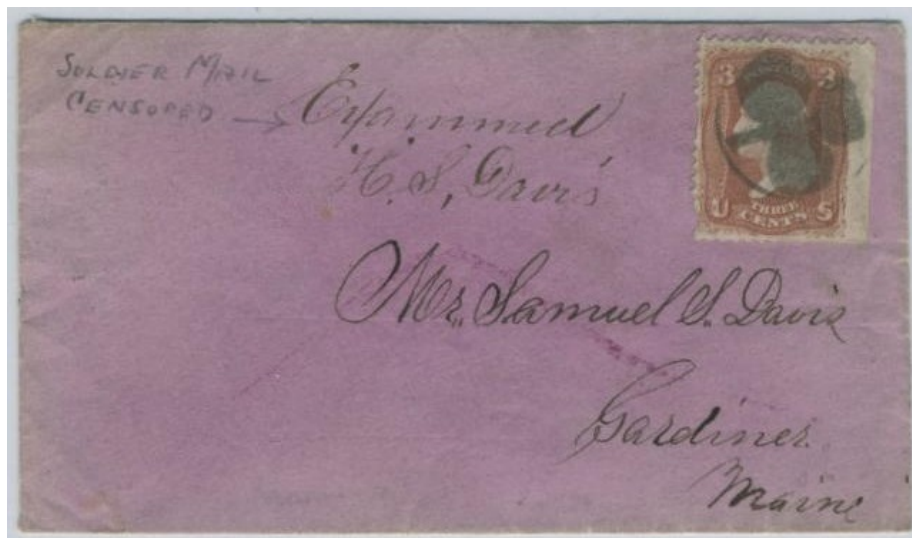
PP-C 27A  
1861



PP-C 27



PP-C 27



PP-C 27A

Pictorials - Clover



PP-C 28  
1861



PP-C 28A [USCC 1754]  
New Haven, CT 1861



PP-C 28B [USCC 1750]  
1861



PP-C 29 [USCC 1731]  
Brooklyn, NY 1861



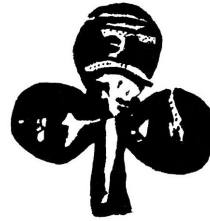
PP-C 30  
Brooklyn, NY 1861



PP-C 31  
New Haven, CT 1869



PP-C 32  
Waterbury, CT(?) 1861-1869



PP-C 33  
Waterbury, CT(?) 1861

Pictorials - Clover



Christmas Day cancel



worn?

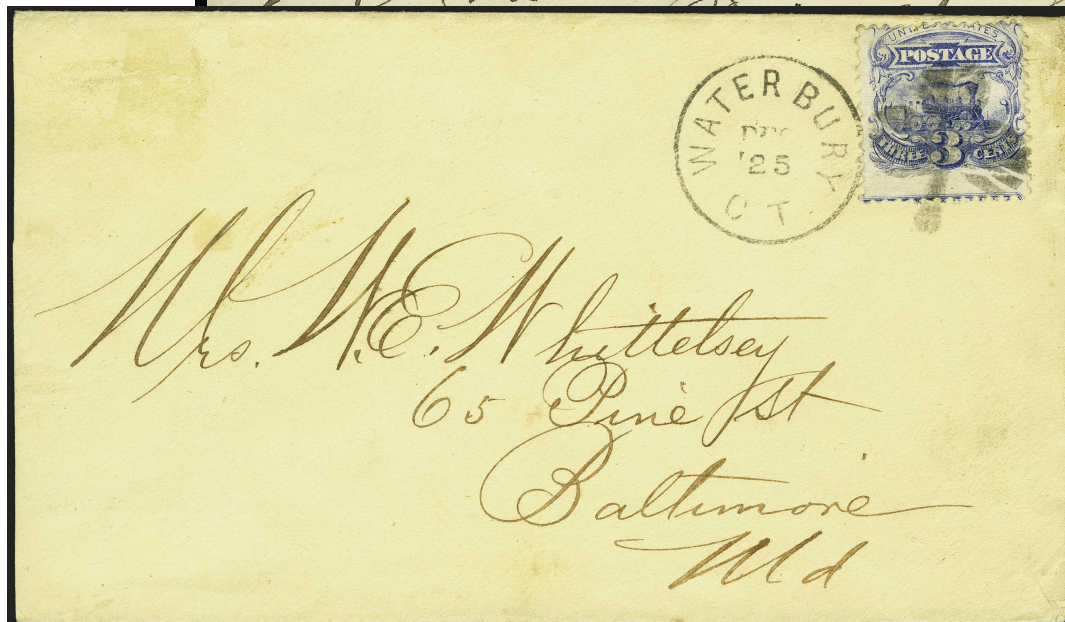


PP-C 34

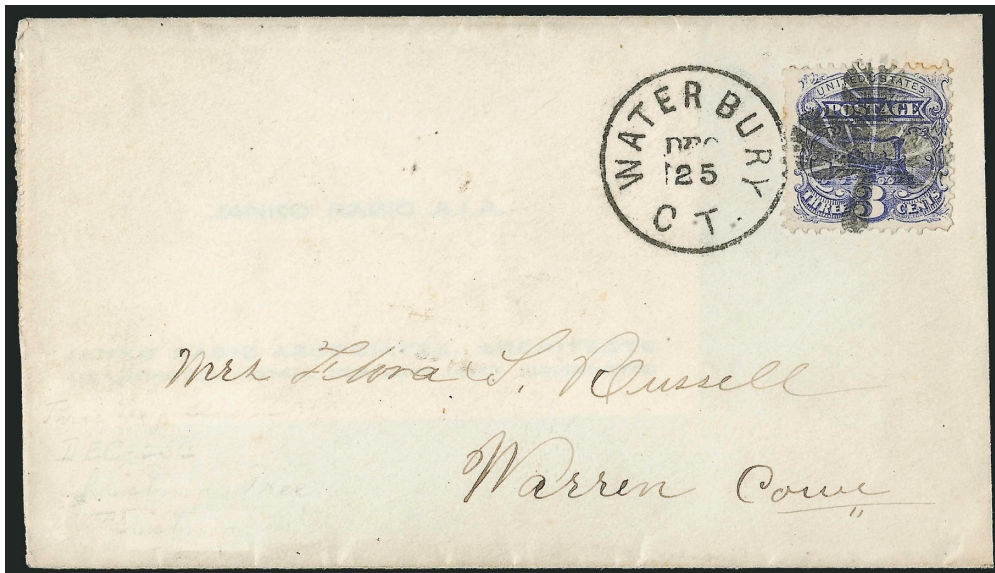
PP-C 34 [USCC 1730; Rohloff F-4]  
Waterbury, CT 12/25-28/1869



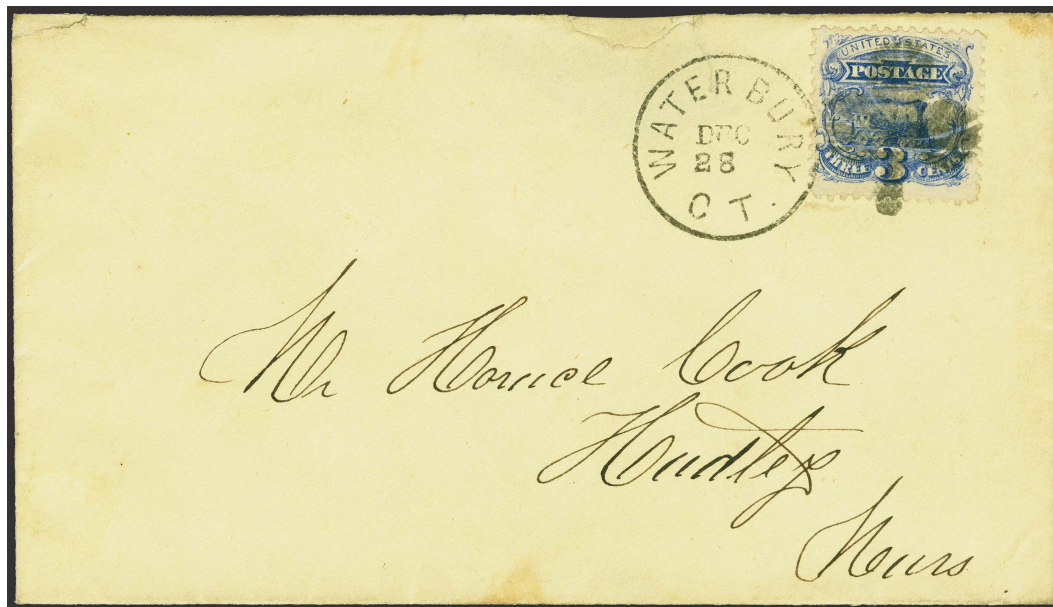
PP-C 34



PP-C 34



PP-C 34



PP-C 34



PP-C 34A  
1861



PP-C 34B [USCC 1741]  
1869



PP-C 34BB [USCC  
1861



PP-C 34C [USCC 1734]  
Dartford, WI 1861



PP-C 34D  
1861



PP-C 36 deep blue  
1861



PP-C 37 [USCC 2444]  
Bloody Run, PA 1861

Pictorials - Clover



PP-C 38  
Nagasaki, Japan 1869



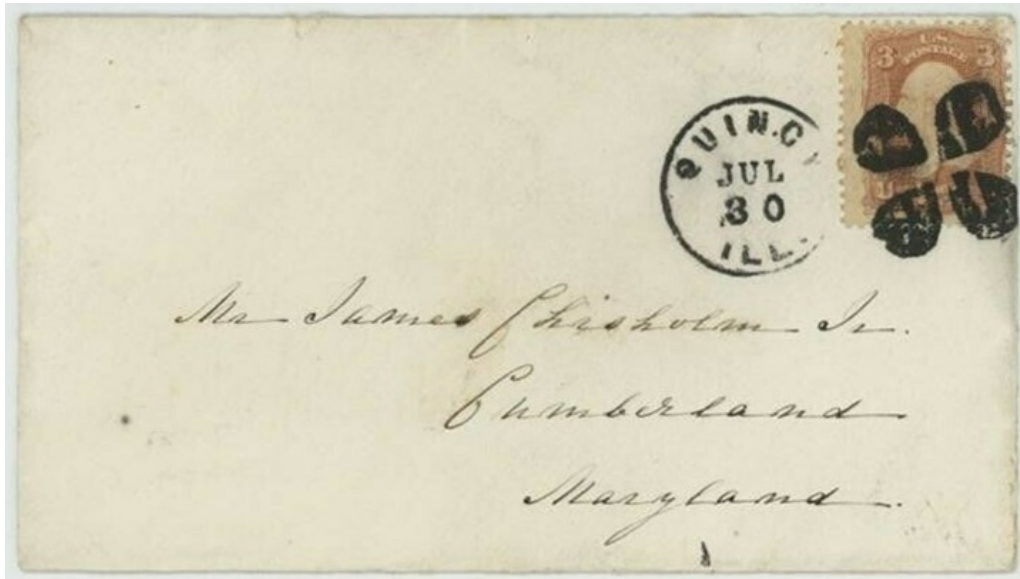
PP-C 39  
Nagasaki, Japan 1869



PP-C 39B  
Quincy, IL 1861



Baltimore Foreign Mail  
marking  
GE-R 37A orange red  
Baltimore, MD 12/20/1969



PP-C 39B

Pictorials - Clover



PP-C 40  
1861



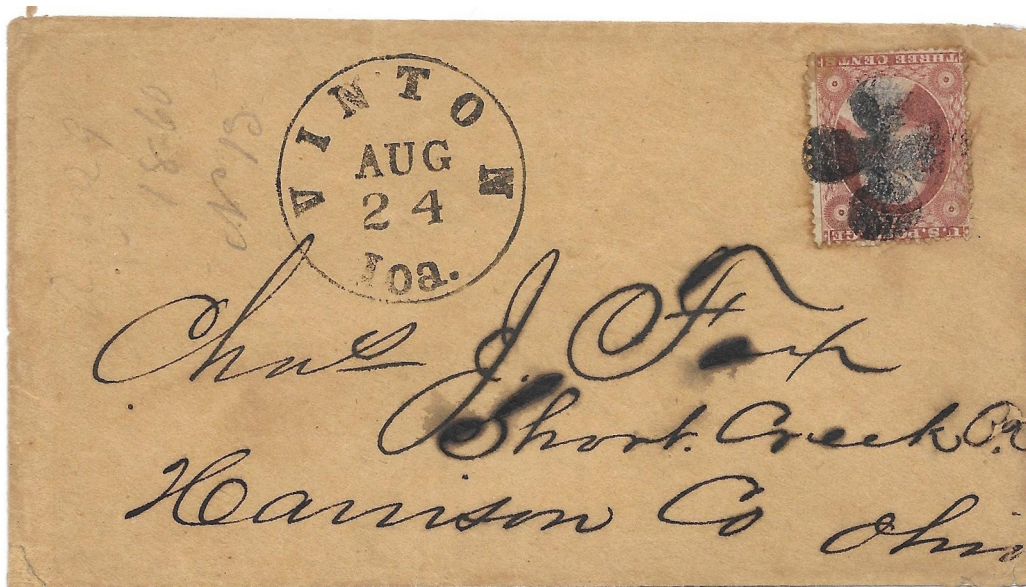
PP-C 41  
Vinton, IA 8/24/1860



PP-C 41A  
Las Cruces, NM  
10/1/1870-5/1/1871



PP-C 41



PP-C 41

PP-C 41A



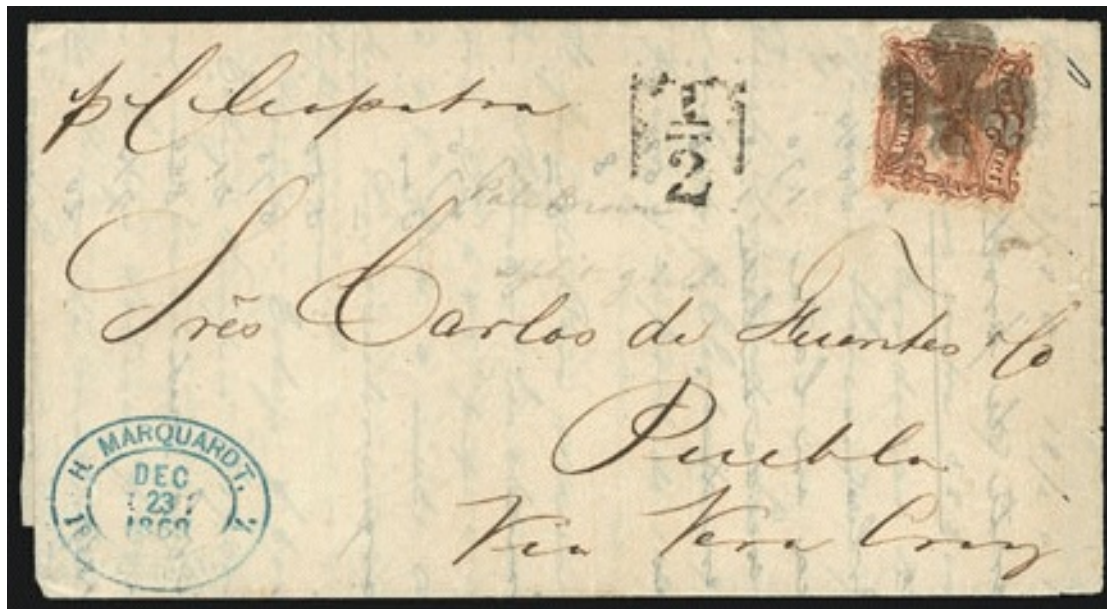
PP-C 41A



PP-C 41B  
 New York, NY(?)  
 12/23/1869



PP-C 42 [USCC 1745]  
 Westhampton, MA 1861



PP-C 41B



PP-C 42

Pictorials - Clover



PP-C 43  
Portsmouth, NH 1861



PP-C 44  
Thomaston, ME 1869



PP-C 43



PP-C 43

Pictorials - Clover



PP-C 44



updated February 1, 2026 (3:33pm)