

Lyres and Harps



PO-Lh 1 [USCC 758; Simpson pg141-177]
Canton, MS 12/1/1859-5/6/1861



PO-Lh 1



PO-HI 1



PO-Lh 1



PO-Lh 1



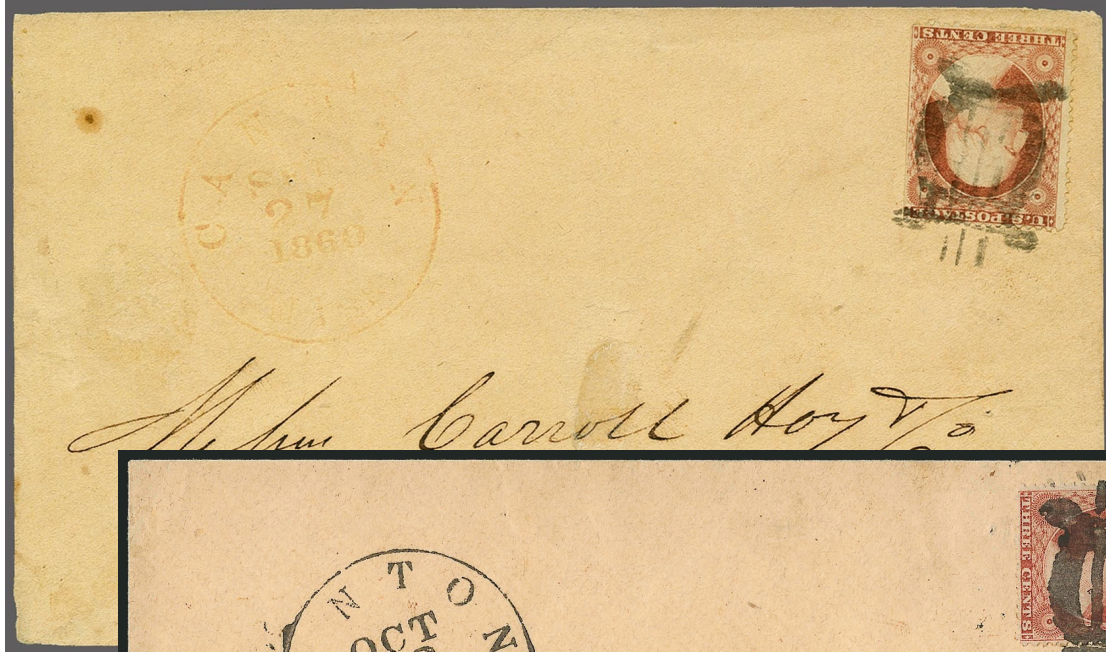
PO-Lh 1



PO-Lh 1



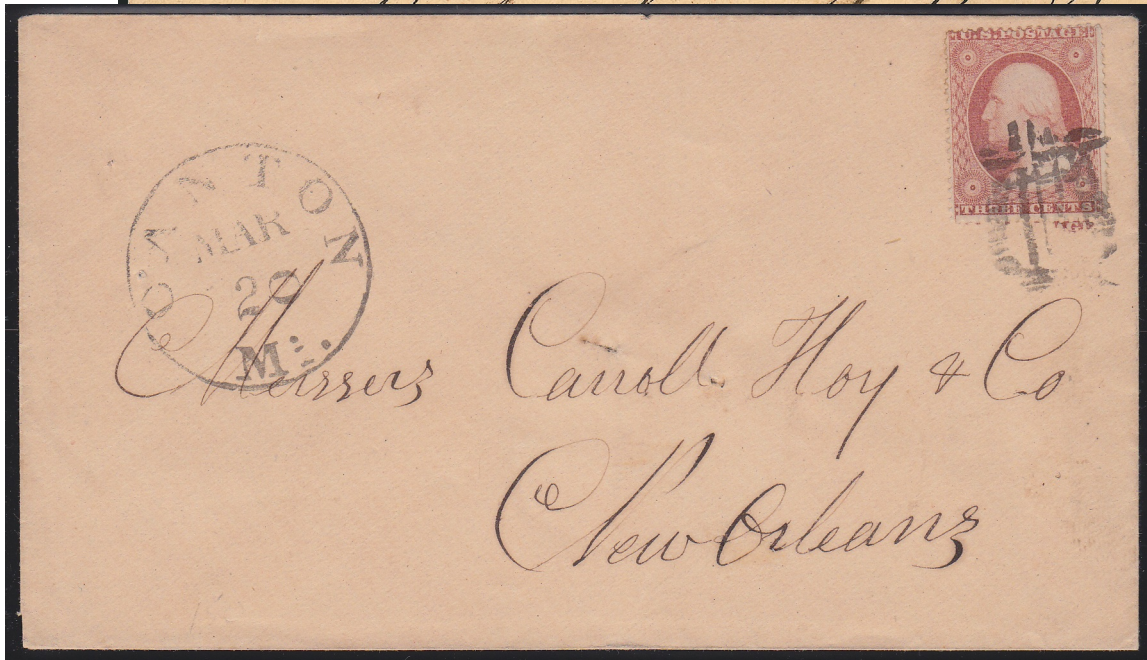
PO-Lh1



PO-Lh1



PO-Lh1



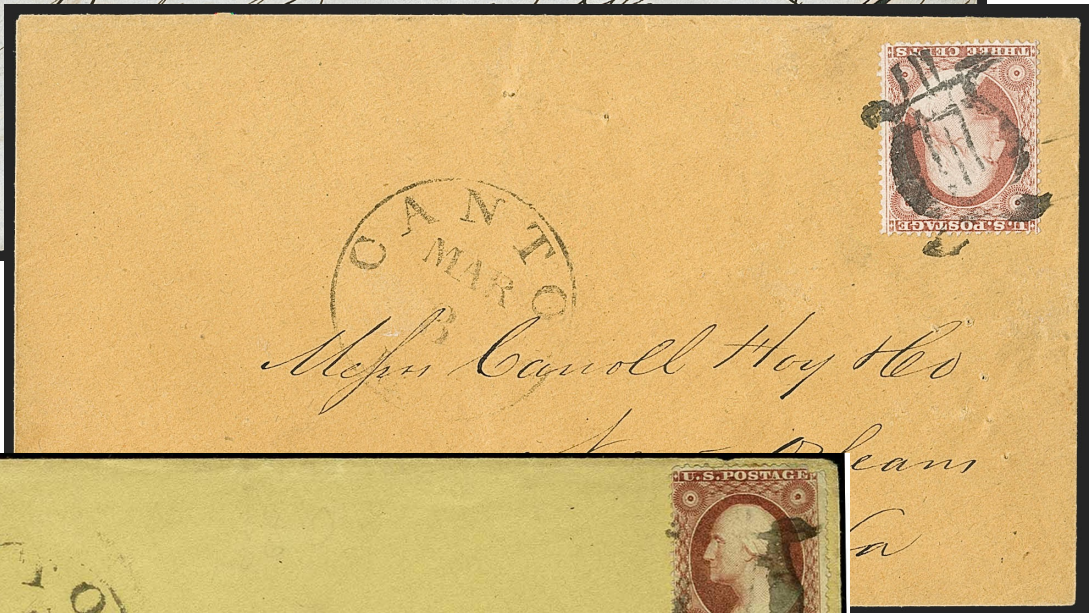
PO-Lh1



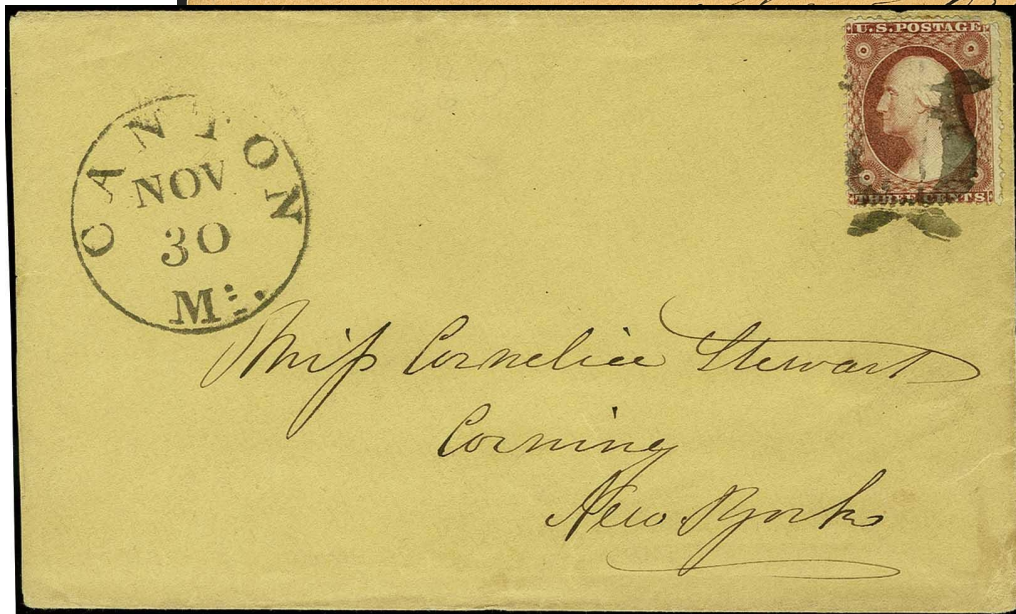
PO-Lh 1



PO-Lh 1



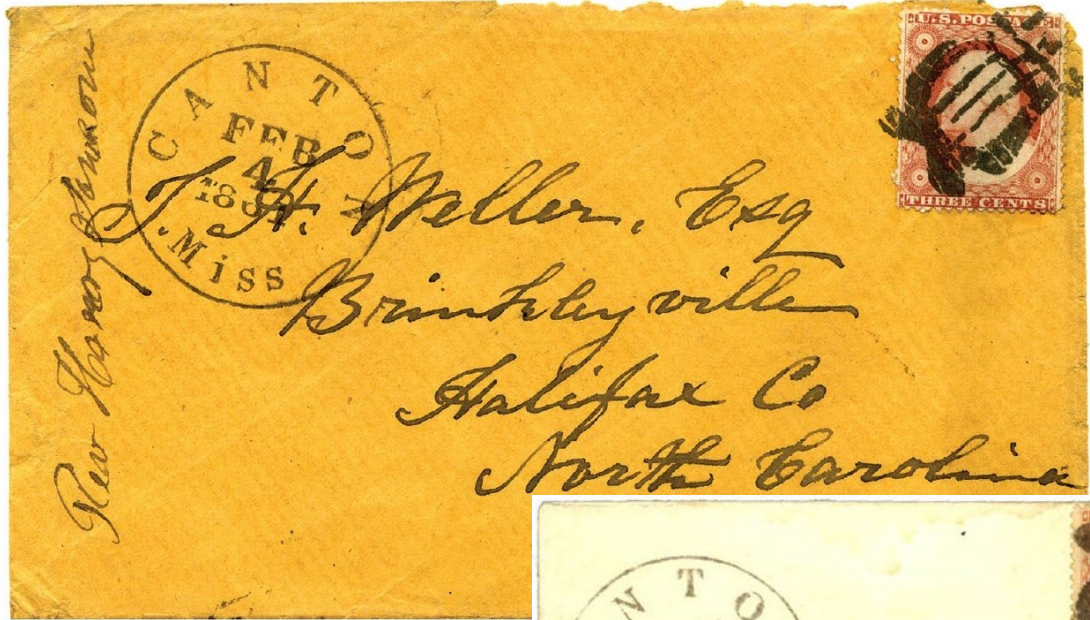
PO-Lh 1



PO-Lh 1



PO-Lh 1



PO-Lh 1

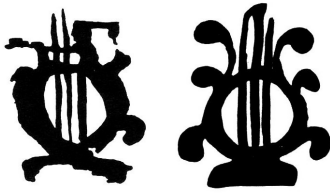


PO-Lh 1



PO-Lh 1

Lyres and Harps



PO-Lh 2 [USCC 756; Simpson pg141-176]
Canton, MS □ 1857



PO-Lh 2



PO-Lh 2

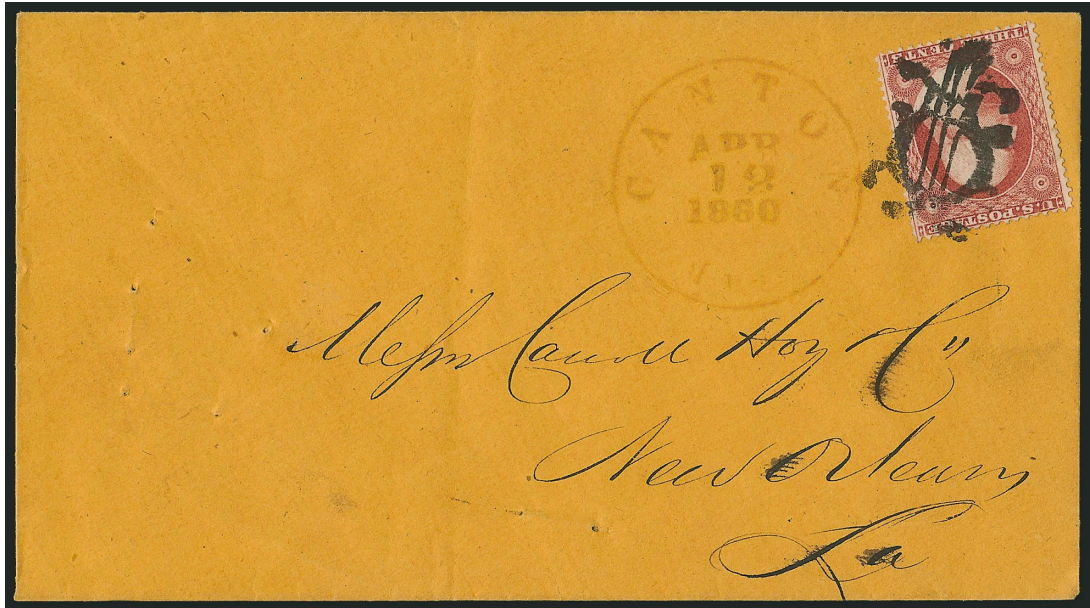


PO-Lh 2

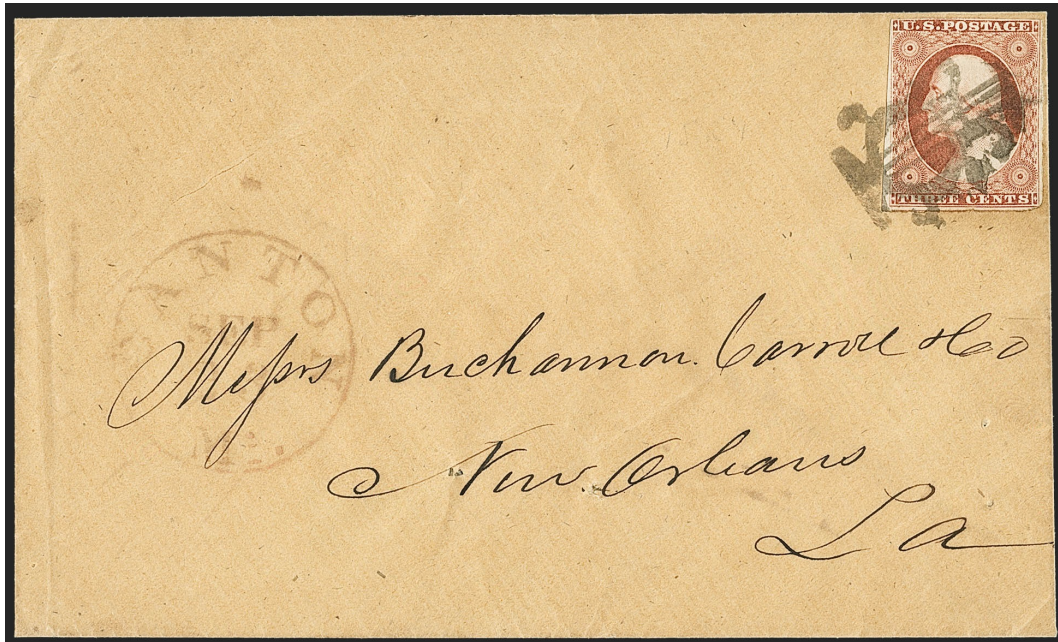
Lyres and Harps



PO-Lh 3
Canton, MS 4/12/1860



PO-Lh 3



PO-Lh 3

Lyres and Harps



PO-Lh 4
[Simpson pg141-169]
Canton, MS 1857



lower portion faked?

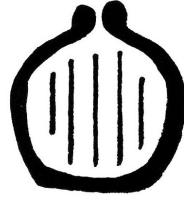
PO-Lh 5 green, black [USCC 757]
St. Patrick, MO 1861



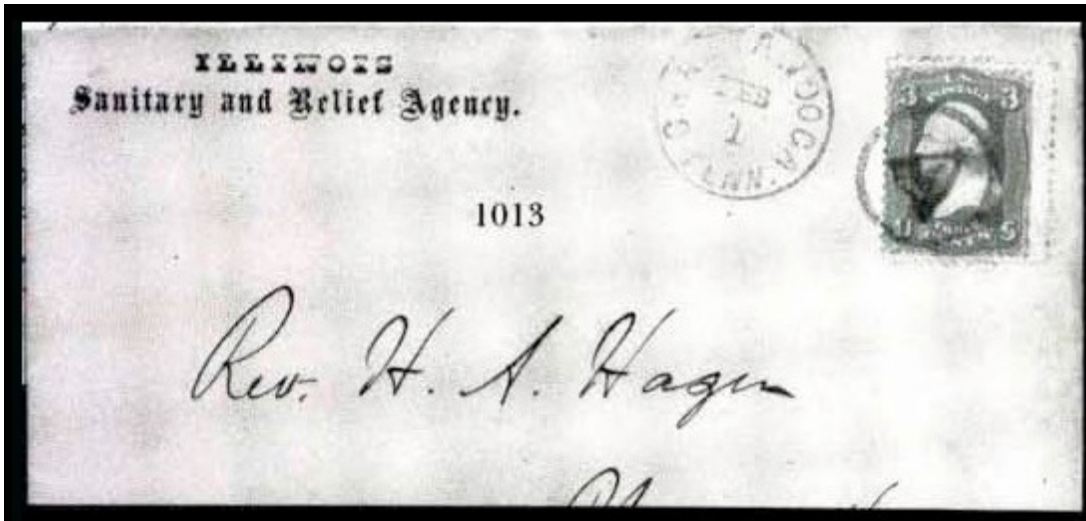
PO-Lh 6 red
1862



PO-Lh 7
Chattanooga, TN 1861



PO-Lh 8 BLUE
1861



PO-Lh 7



updated March 1, 2026 (2:14pm)