

Postal Markings - Steam Boat

STEAMBOAT



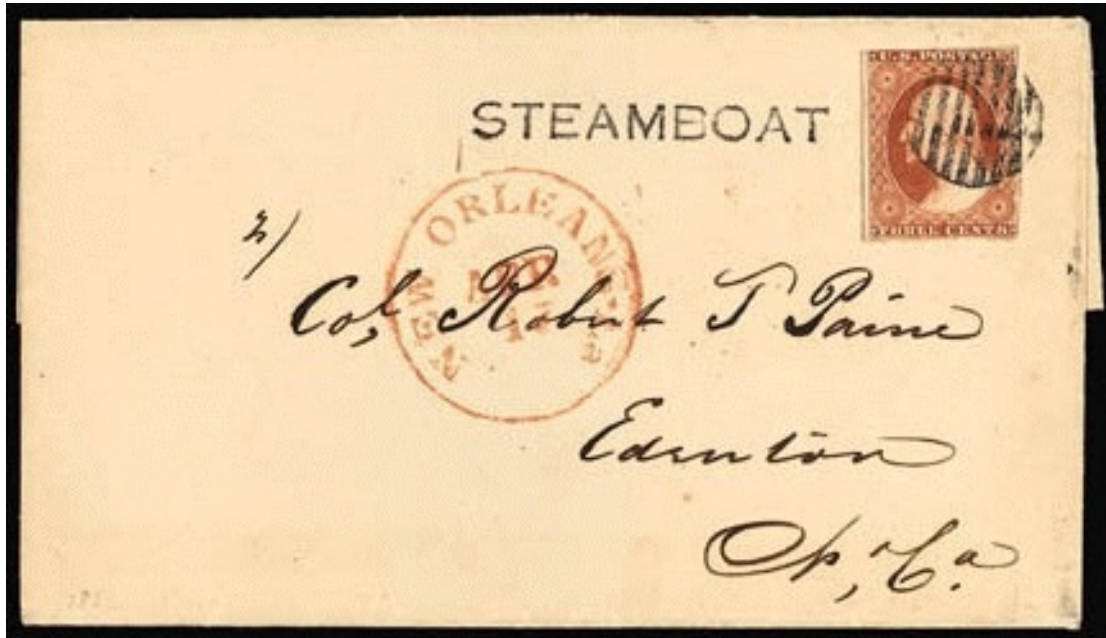
PM-SB 1
1861

STEAMBOAT

42x5mm



PM-SB 2 [Simpson pg215-25]
New Orleans, LA 1857-1861



PM-SB 2

STEAMBOAT

43x5mm



PM-SB 2B (approx. 60% actual size)

PM-SB 2B [Simpson pg215-20]
Mobile, AL 1851

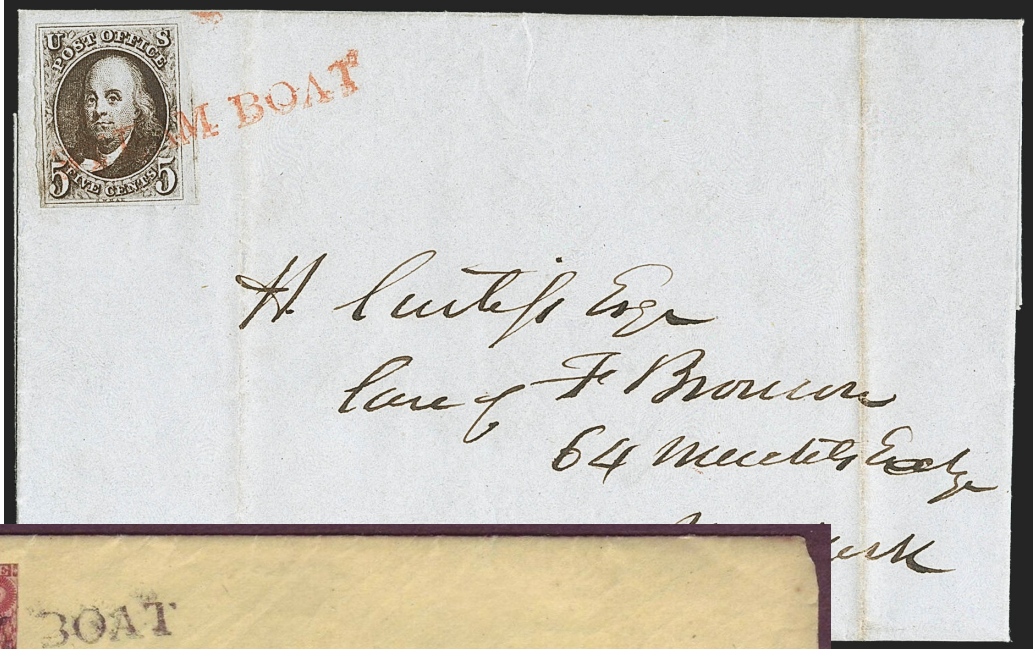
Postal Markings - Steam Boat

STEAM BOAT

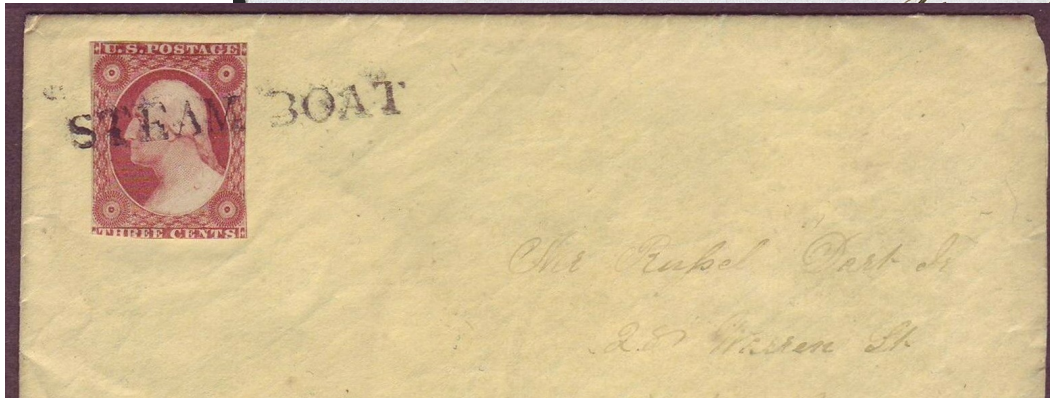
41x4mm



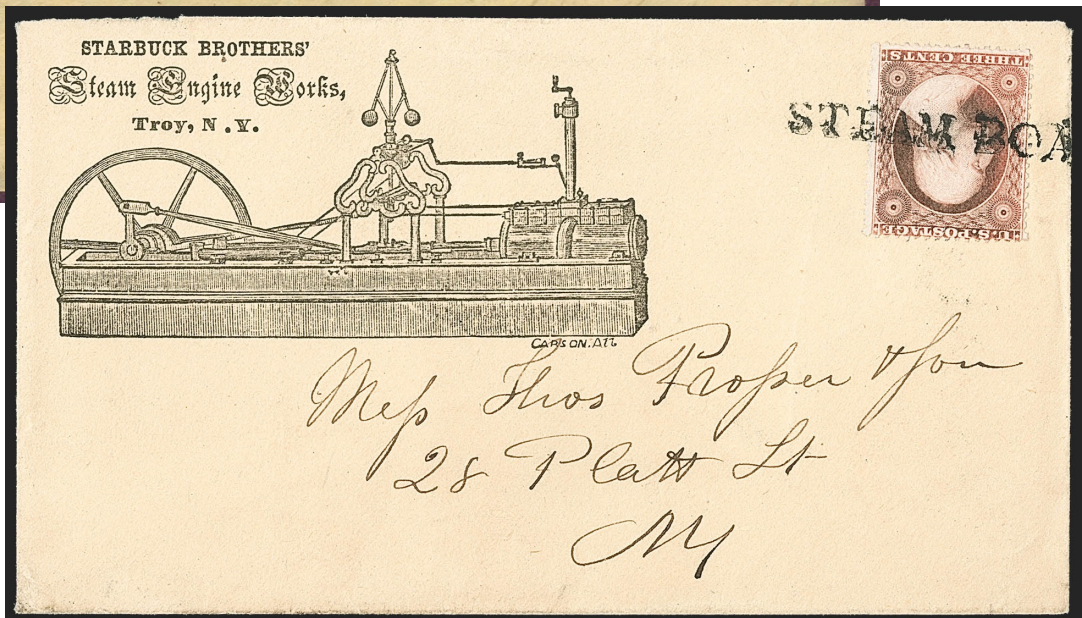
PM-SB 3 red, black [Simpson pg215-29]
New York, NY 1851-61



PM-SB 3



PM-SB 3



PM-SB 3

Postal Markings - Steam Boat



PM-SB 3A blue
1847

STEAMBOAT

PM-SB 4
1861



PM-SB 4A
1851

STEAM BOAT

40x5mm

PM-SB 5 [USCC 6863; Simpson pg215-11]
Cleveland, OH; Providence, RI; & Troy, NY 1861

STEAMBOAT

PM-SB 6 [USCC 6868]
Utica, NY 1861



PM-SB 5

STEAM BOAT

PM-SB 7 [USCC 6868]
Chicago, IL 1861

STEAMBOAT

PM-SB 8 [USCC 6868]
Baltimore, MD 1861

Postal Markings - Steam Boat



PM-SB 9



PM-SB 9

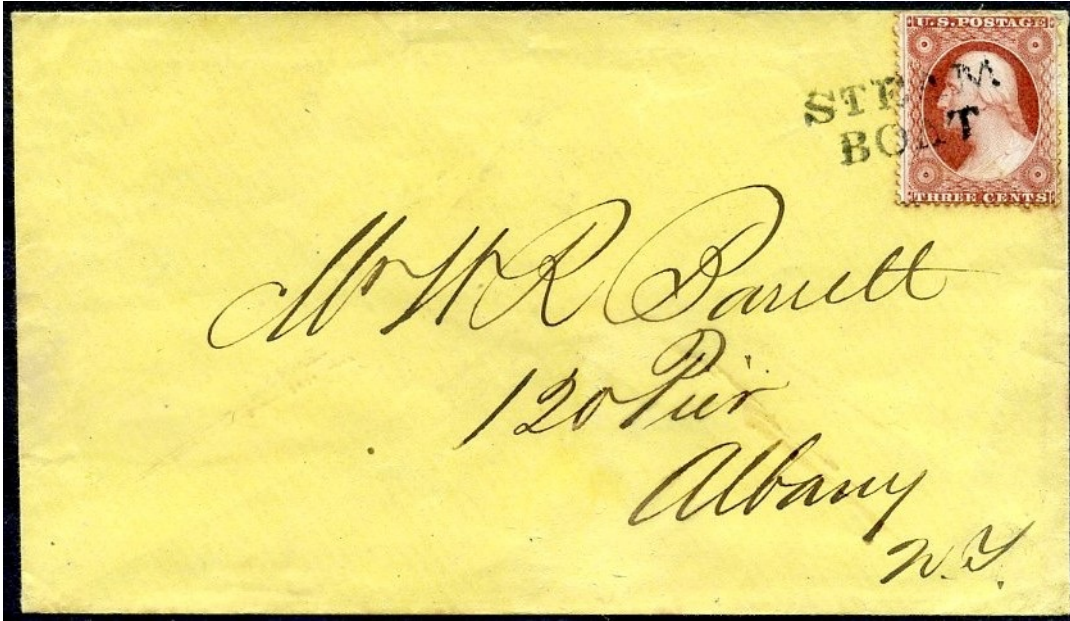
PM-SB 9 39x4.5mm
Baltimore, MD 11/23/1860-9/3/1861

Postal Markings - Steam Boat

STEAM
BOAT



PM-SB 10 [USCC 6823]
Chattanooga, TN 1851



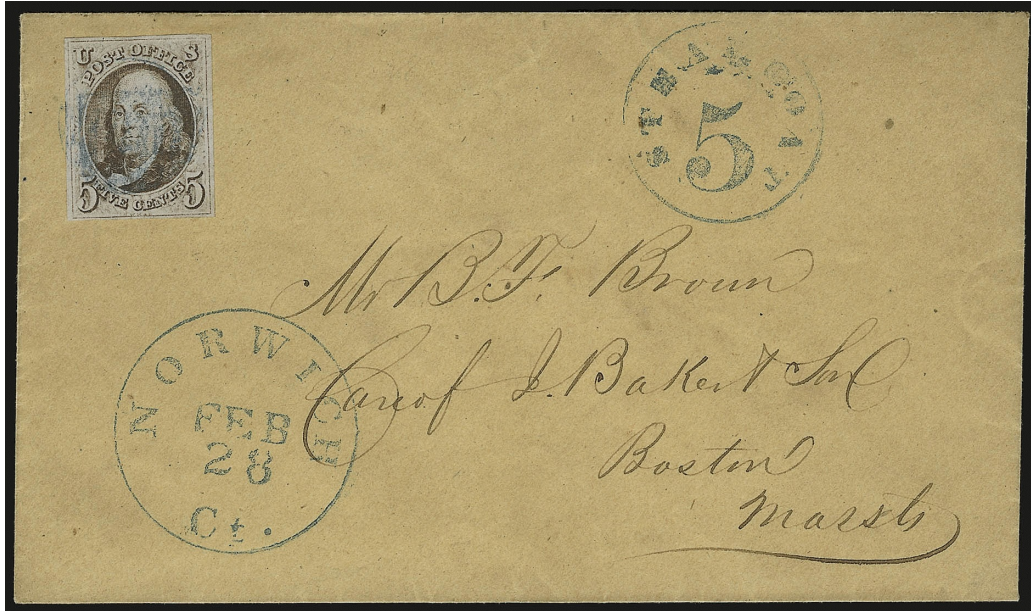
PM-SB 10A

PM-SB 10A
Albany, NY 1857

Postal Markings - Steam Boat



PM-SB 11 [USCC 6827; Simpson pg221-5]
Norwich, CT 1848



PM-SB 11A blue
Norwich, CT 1847



PM-SB 12

PM-SB 12 [USCC 6828]
Buffalo, NY 1851

STEAM BOAT



PM-SB 13



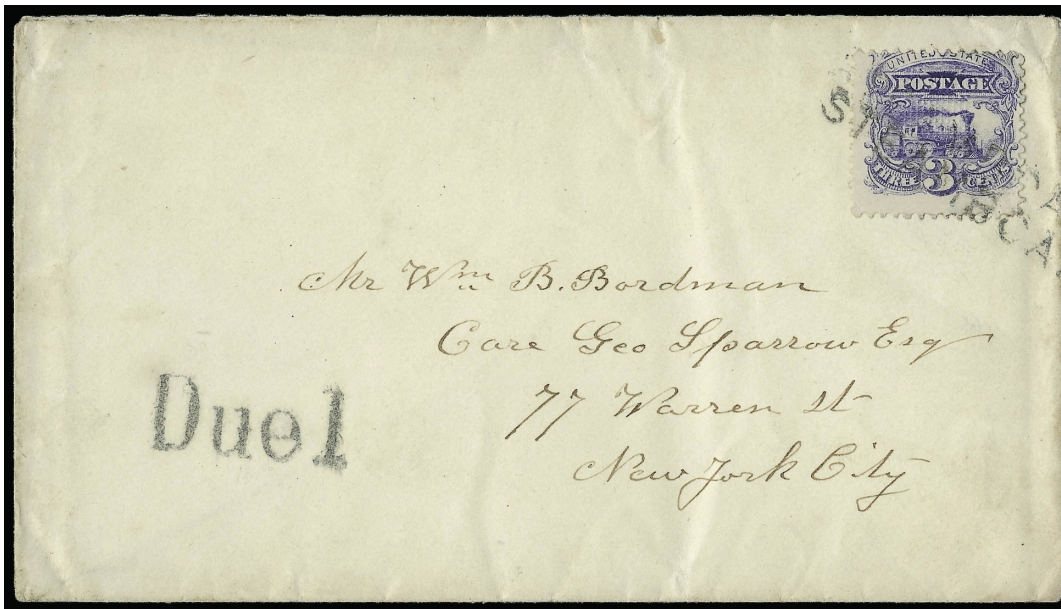
PM-SB 13



PM-SB 13

PM-SB 13 [USCC 6829]
Detroit, MI 1851
Steamer Planet

Postal Markings - Steam Boat



PM-SB 14

PM-SB 14
New York, NY 1869



PM-SB 15

PM-SB 15
San Francisco, CA 1867

**TROY & NEW YORK
STEAM BOAT.**

PM-RM 6 blue [USCC 6830]
Hudson River Mail 1851



Fake

Postal Markings - Steam Boat



updated October 8, 2024 (9:05am)