






Postal Markings - Paids in Grids

  <p>PM-PG 1 [Simpson pg113-15] East Winthrop, ME 1851</p>	 <p>PM-PG 2 1857</p>	 <p>PM-PG 3 Profile House, NH 1861</p>	 <p>PM-PG 4 blue, black Woosung, IL 1861-67</p>
---	--	--	---



PM-PG 3

  <p>17mm diameter PM-PG 5 blue [Simpson pg113-6] Jewett City, CT 1851</p>	 <p>PM-PG 5A [Simpson pg115-46] Bath, NH</p>	 <p>PM-PG 5B green 1851</p>	 <p>PM-PG 6 [Simpson pg113-3] 1851</p>
---	--	--	--

Postal Markings - Paids in Grids



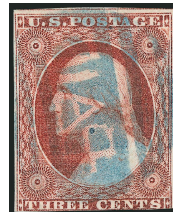
PM-PG 5



PM-PG 7 blue, black
[Simpson pg113-7]
Norwich, CT [] 1851



PM-PG 7A blue
[Simpson pg113-8]
Norwich, CT [] 1851



PM-PG 7B blue [Simpson pg113-9]
Norwich, CT



PM-PG 7



Postal Markings - Paid in Grids






PM-PG 7A



PM-PG 7A


 <p>PM-PG 7C [Simpson pg115-40] East Sanbornton, NH</p>	 <p>PM-PG 7.5 [Simpson pg115-51] Fitzwilliam, NH</p>	 <p>PM-PG 8 [USCC 6700] Wells River, VT 1857</p>	 <p>PM-PG 8A [Simpson pg113-12] Addison Point, ME</p>	 <p>PM-PG 8AB [Simpson pg115-50] Epping, NH</p>
 <p>PM-PG 8B [Simpson pg113-14] Detroit, MI</p>	 <p>PM-PG 8C [Simpson pg113-23] Baltimore, MD</p>	 <p>PM-PG 8D [Simpson pg115-36] East Abington, MA</p>	 <p>PM-PG 8DA [Simpson pg115-56] Wells River, VT</p>	

Postal Markings - Paids in Grids

 <p>PM-PG 8E [Simpson pg115-40] New Salem, MA</p>	 <p>19mm diameter</p> <p>PM-PG 8.5 [Simpson pg113-11] Brownsville, KY</p>	 <p>19mm diameter</p> <p>PM-PG 9 blue [Simpson pg113-10] Yantic, CT ■ 1852</p>		
---	---	--	--	--

Postal Markings - Paids in Grids



PM-PG 10 red, black [Simpson pg113-26; USCC 6719]
 Boston, MA  red 7/7/1851-7/28/1851; black 7/12/1851-1/15/1852



PM-PG 10

Postal Markings - Paid in Grids



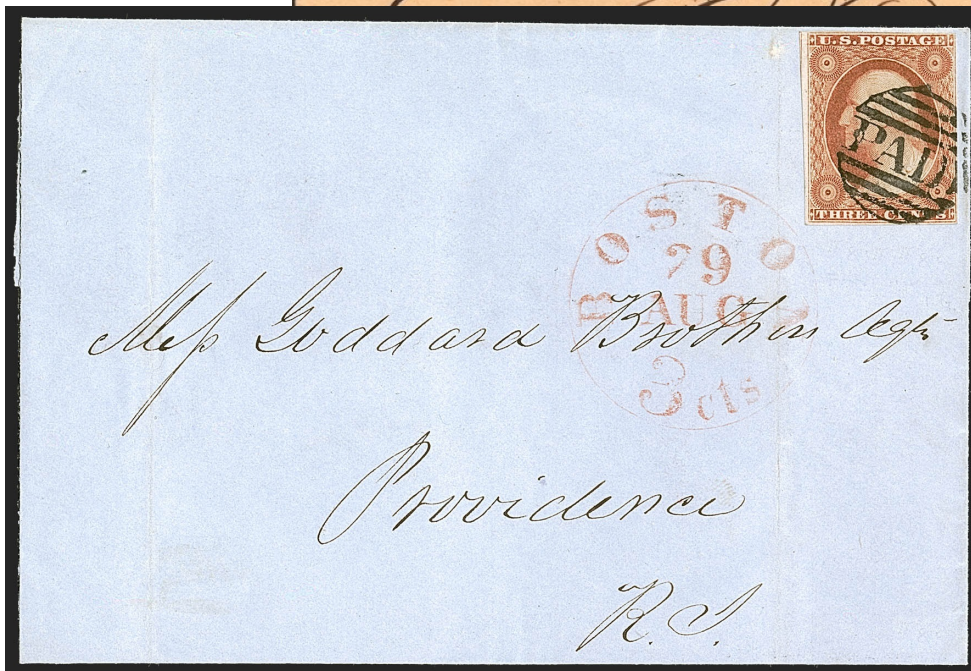
PM-PG 10



PM-PG 10



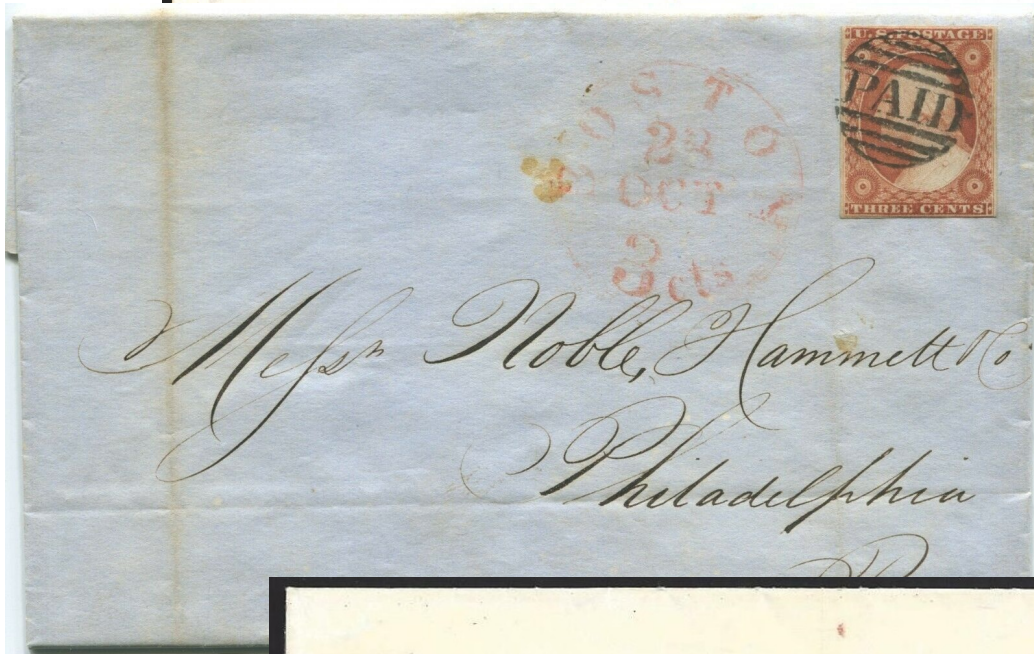
PM-PG 10



PM-PG 10



PM-PG 10









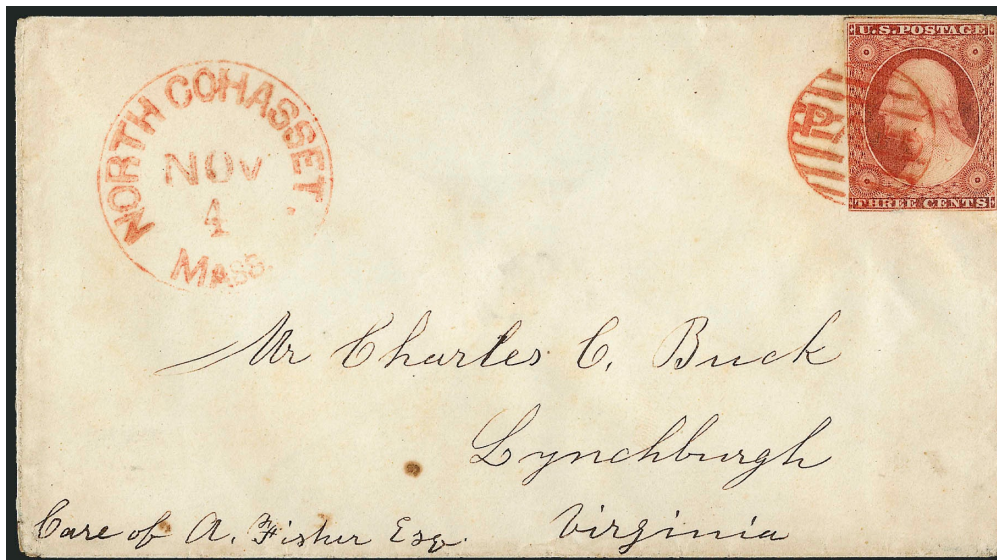
PM-PG 10








PM-PG 10

Postal Markings - Paids in Grids

 <p>17mm diameter</p> <p>PM-PG 10.1 [Simpson pg113-16] Farmington, ME</p>				
 <p>20mm diameter</p> <p>PM-PG 10.1A [Simpson pg113-21] Turner, ME</p>	 <p>20mm diameter</p> <p>PM-PG 10.1B [Simpson pg113-17] Gorham, ME</p>	 <p>19mm diameter</p> <p>PM-PG 10.5 [Simpson pg113-18] North Livermore, ME</p>	 <p>PM-PG 10.5A [Simpson pg113-24] Ashburnam, MA</p>	 <p>PM-PG 10.5AA [Simpson pg115-42; USCC 6707] North Cohasset, MA 1851</p>



PM-PG 10.5AA

 <p>PM-PG 10.5AB [Simpson pg115-43] Orange, MA</p>	 <p>PM-PG 10.5B [Simpson pg113-4] town unknown</p>	 <p>PM-PG 10.5BA ultramarine [Simpson pg115-38] Haverhill, MA</p>	 <p>PM-PG 10.5BB [Simpson pg115-39] Haverhill, MA</p>	 <p>PM-PG 10.5C [Simpson pg113-1] town unknown</p>
--	--	---	--	--

Postal Markings - Paids in Grids



PM-PG 10.5D
[Simpson pg113-5]
town unknown



22mm diameter

PM-PG 10.5E
[Simpson pg115-47]
Bradford, NH



PM-PG 10.5F
[Simpson pg115-53]
Wakefield, NH

Postal Markings - Paids in Grids



26mm diameter



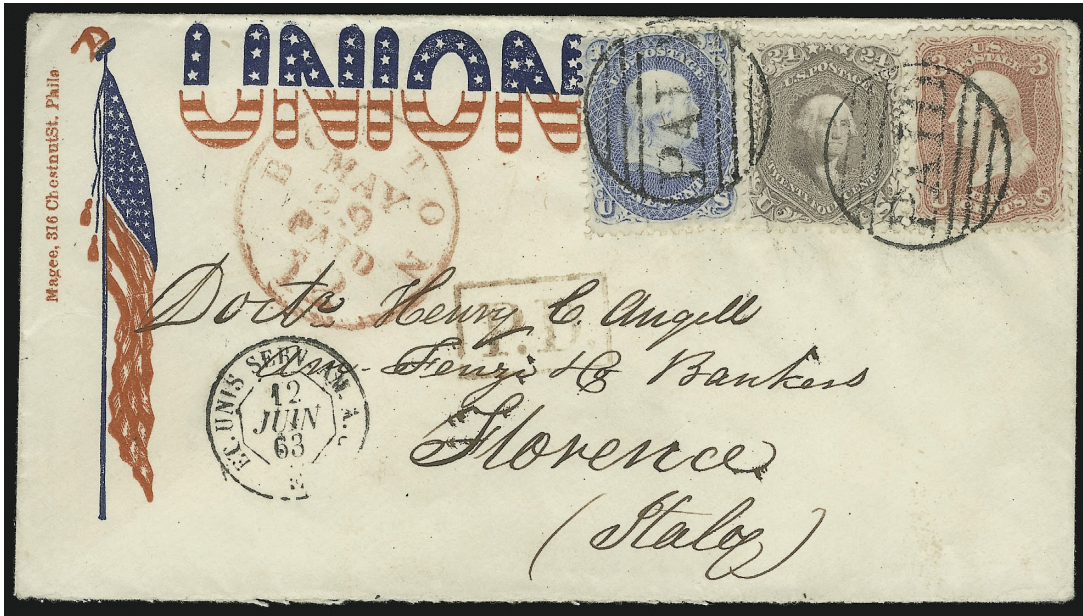
PM-PG 11 [Simpson pg115-34; Blake-Davis 625]
Boston, MA 12/6/1857-11/18/1862

Postal Markings - Paid in Grids

PM-PG 11 continued



PM-PG 11 continued



PM-PG 11



PM-PG 11

Postal Markings - Paids in Grids



26mm diameter



PM-PG 12 [Simpson pg113-31]
Boston, MA 6/18/1857 & East Marshfield, MA 1861



PM-PG 12



24mm diameter

PM-PG 12A [Simpson pg113-28; Blake-Davis 620]
Boston, MA 1/16/1852-10/15/1855



24mm diameter

PM-PG 12B red, black [Simpson pg113-29; Blake-Davis 621]
Boston, MA 11/10/1852



24mm diameter

PM-PG 12C [Simpson pg113-30; Blake-Davis 622]
Boston, MA 7/16/1854-3/16/1857



25mm diameter

PM-PG 12D [Simpson pg115-32; Blake-Davis 624]
Boston, MA 10/20/1857-6/5/1861



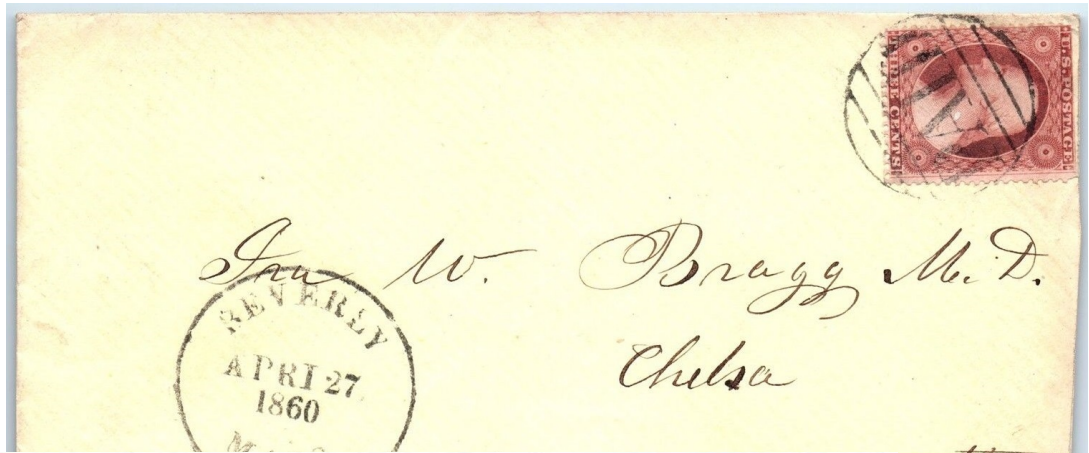
24mm diameter

PM-PG 12E [Simpson pg115-33; Blake-Davis 624A]
Boston, MA 2/4/1859-7/29/1861



25mm diameter

PM-PG 12.5
[Simpson pg113-25]
Beverly, MA 4/27/1860-1861



PM-PG 12.5



PM-PG 12.5



PM-PG 12.5



27mm diameter

PM-PG 12.5A
[Simpson pg115-45]
Woodville, MS



25mm diameter

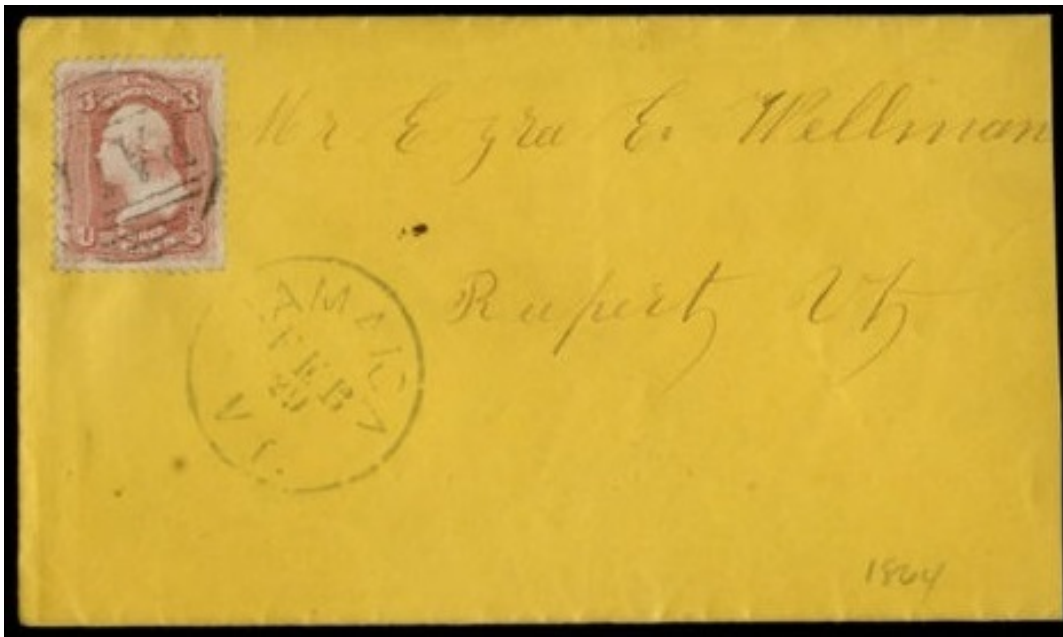
PM-PG 12.5B red, black
[Simpson pg115-55]
Jamaica, VT [] 2/29/1864(?)



17mm diameter



PM-PG 13 [Simpson pg115-52; USCC 6721]
New Ipswich, NH [] 1851-57



PM-PG 12.5B



compare with PN-E 81



PM-PG 14 [Simpson pg113-22; USCC 6712]
West Baldwin, ME □ 1857



22mm diameter

PM-PG 14A
[Simpson pg113-2]
town unknown



PM-PG 15
[Simpson pg113-20]
Saco, ME □ 1851



PM-PG 16 [Simpson pg113-19; USCC 6705]
Saco, ME □ 1861-64



PM-PG 16

Postal Markings - Paids in Grids



PM-PG 17
1851



PM-PG 17A
Lincoln, ME 1851



PM-PG 18 [Simpson pg115-41]
North Chelmsford, MA 1857



PM-PG 17A

Postal Markings - Paids in Grids

AID

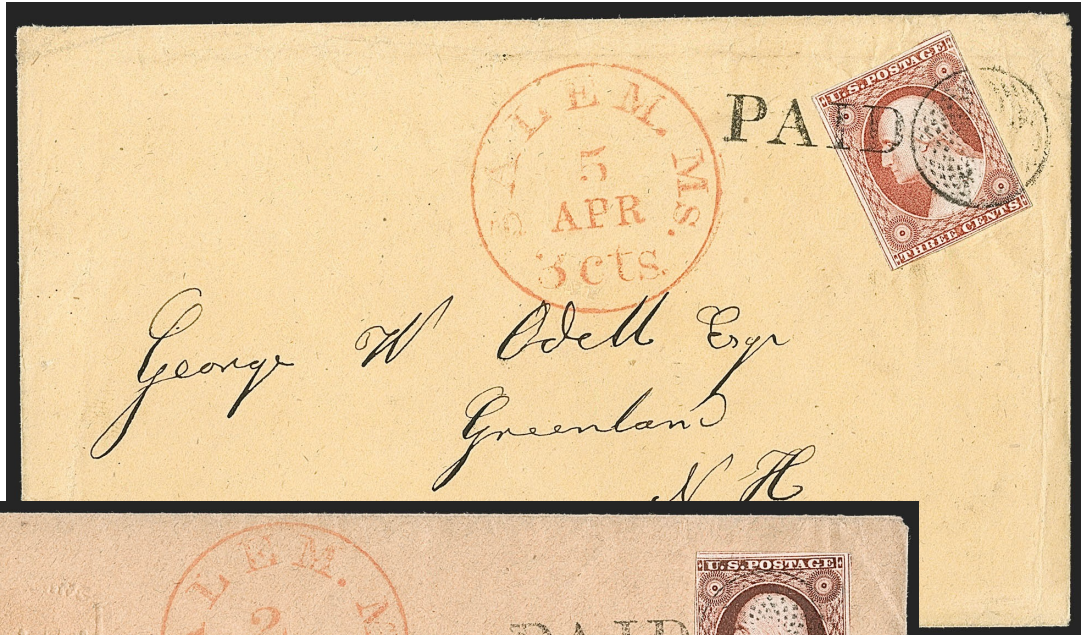


PM-PG 19
1857

PAID



PM-PG 20
Salem, MA 1851



PM-PG 20



PM-PG 20



PM-PG 20

Postal Markings - Paid in Grids



updated August 29, 2023 (12:02pm)