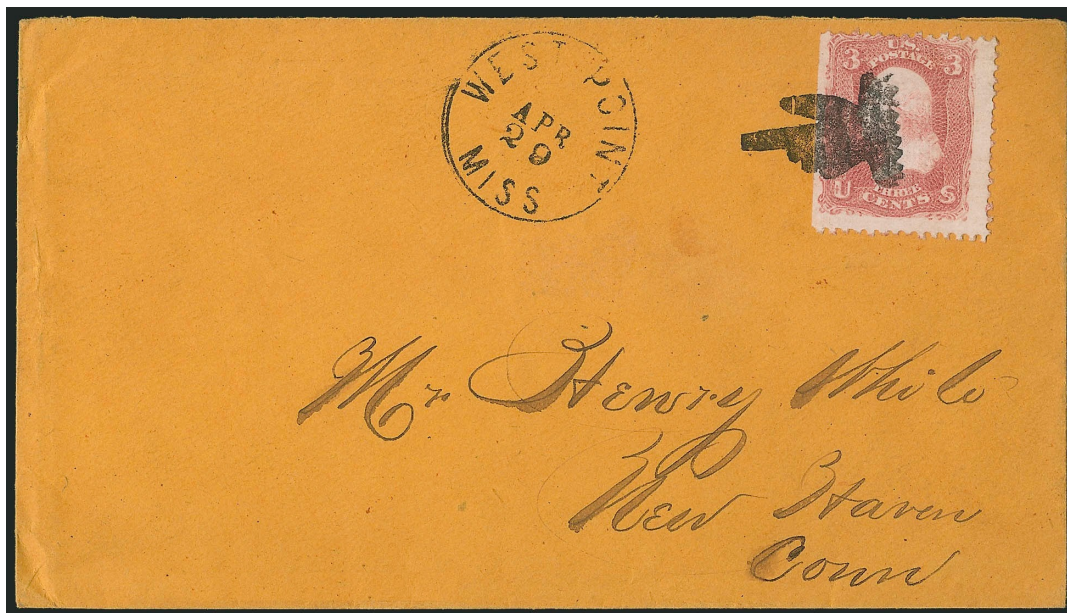
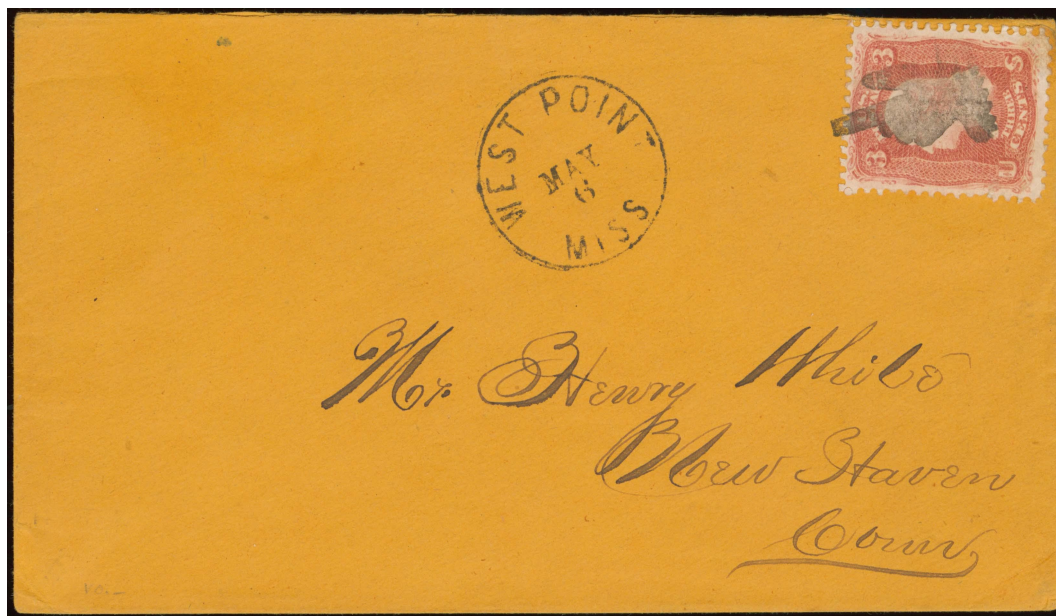


Hands and Feet



 <p>"shaded hand"</p> <p>PH-HF 1 Westville, CT <input type="checkbox"/> 1851</p>	 <p>PH-HF 2 1857</p>	 <p>PH-HF 2A [USCC 577] 1857</p>	 <p>worn state(?)</p> <p>PH-HF 3 [USCC 563] West Point, MS <input type="checkbox"/> 4/29/1868?</p>
--	--	--	--



PH-HF 3



PH-HF 3

 <p>PH-HF 5 1861</p>	 <p>PH-HF 6 Sumter, IL 1861</p>			
--	---	--	--	--

Hands and Feet



worn state(?)



PH-HF 7

Lansing, MI □ 1861-67



PH-HF 7



PH-HF 7



PH-HF 9
Berea, OH □ 1869



PH-HF 9A [USCC 571]
1861








PH-HF 9B [USCC 573]
1861



PH-HF 10
1861



Hands and Feet

 <p>PH-HF 11 West Point, MS 1861</p>	 <p>"crude hand" (?) PH-HF 12 1869</p>	 <p>PH-HF 13 1869</p>	 <p>PM-PD 12 Hartford, CT 1847</p>	 <p>PH-HF 14 red, blue Hartford, CT 1847</p>
--	--	---	---	--



 <p>PH-HF 15 Norfolk, VA(?) 1861</p>	 <p>PH-HF 16 [USCC 589] Lansing, MI 1861-67</p>	 <p>PH-HF 17 Wyandot, OH 1857</p>
--	--	---



Hands and Feet



PH-HF 17



updated May 27, 2022 (9:11am)