

Figures and Heads



"man thumbing nose"



PH-F 1

Brattleboro, VT 10/22/1866-1868



Miss. Maria W. Arnold
 Bostonville

PH-F 1



Saml. Mercurio Esq
 care of Mess G. G. & G. B. Ward
 Boston
 Mass.

Rec'd
 Boston
 21 Oct 1866
 25 Sept 1866

PH-F 1



"man thumbing nose"

PH-F 1a
 Brattleboro, VT 1861



"man thumbing nose"

PH-F 3 [USCC 31]
 1861



"man thumbing nose"

PH-F ?? [USCC 49]
 Brattleboro, VT 1861

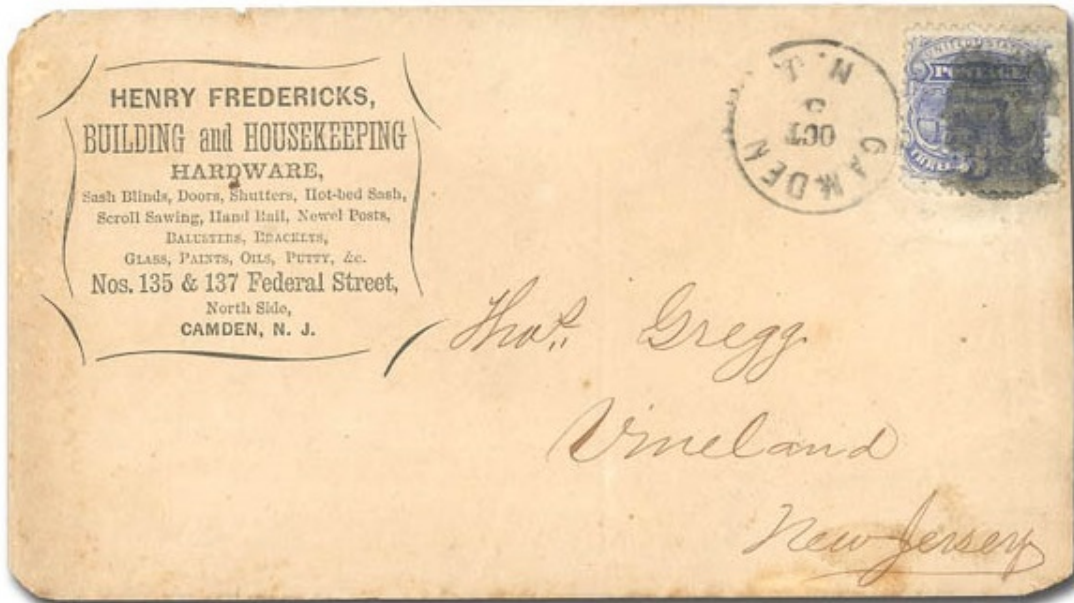


"man thumbing nose"

PH-F ?? [USCC 50]
 Brattleboro, VT 1861

Figures and Heads

 <p>"man thumbing nose" genuine?</p> <p>PH-F 4 [USCC51] 1869</p>	 <p>"Colonel Soldier"</p> <p>PH-F 5 [USCC 58] 1861</p>	 <p>PH-F 6 [USCC 27] Westfield, MA 1869</p>	 <p>PH-F 7 [USCC 79] Camden, NJ 10/5/1869</p>	 <p>PH-F 7A Corry, PA 12/17/1869</p>
---	---	--	--	---



PH-F 7

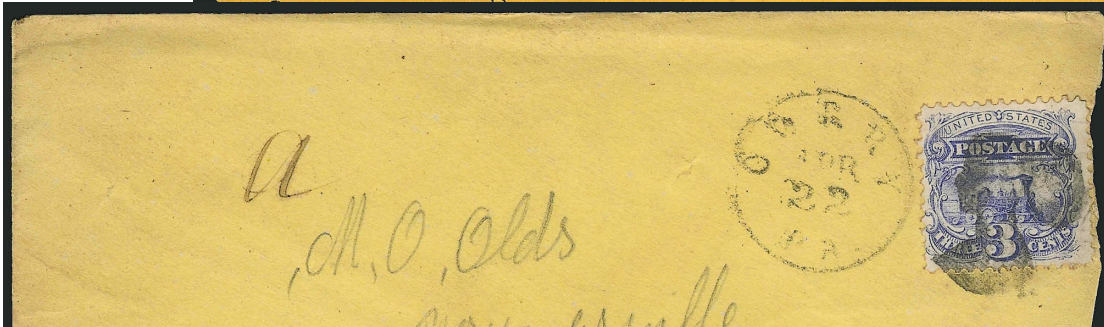


PH-F 7A

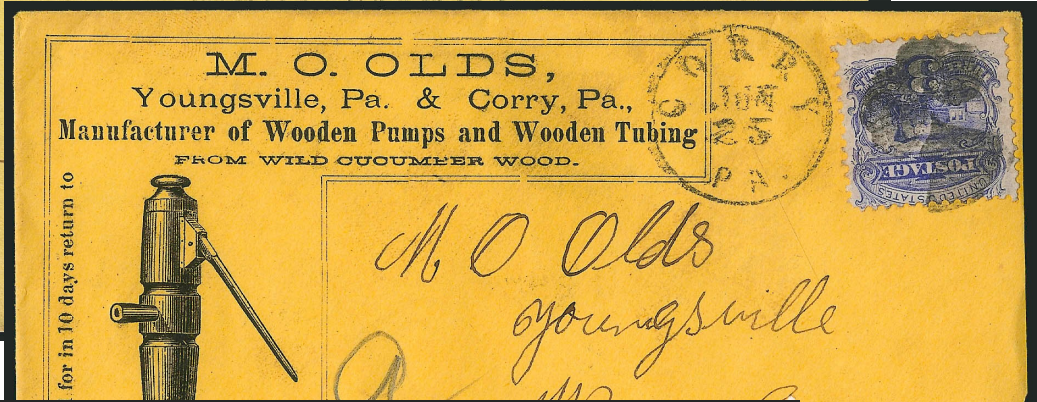
	 <p>compare with PH-F 64</p> <p>PH-F 8 Corry, PA 4/22/1869-6/29/1869</p>		
---	---	--	--



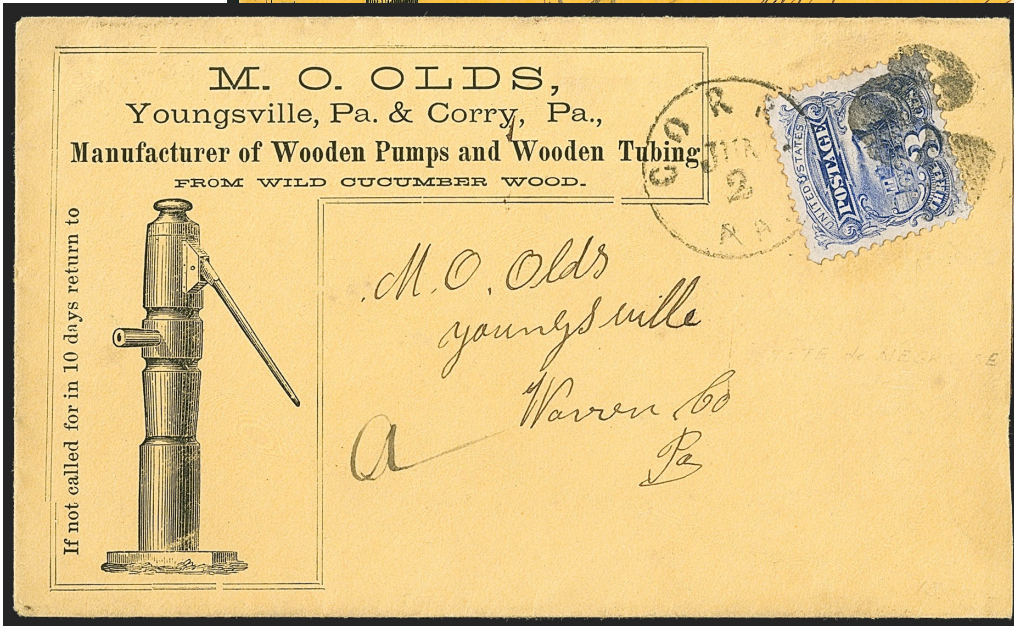
PH-F-8



PH-F-8



PH-F-8



PH-F-8

Figures and Heads



worn device



PH-F 9 [Rohloff E-5; USCC 28]
Waterbury, CT 4/21-23/1866



PH-F 9



PH-F 9



PH-F 9



PH-F 9

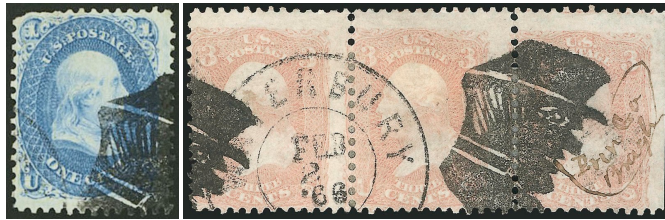


PH-F 9



PH-F 9

Figures and Heads



"Union Soldier"

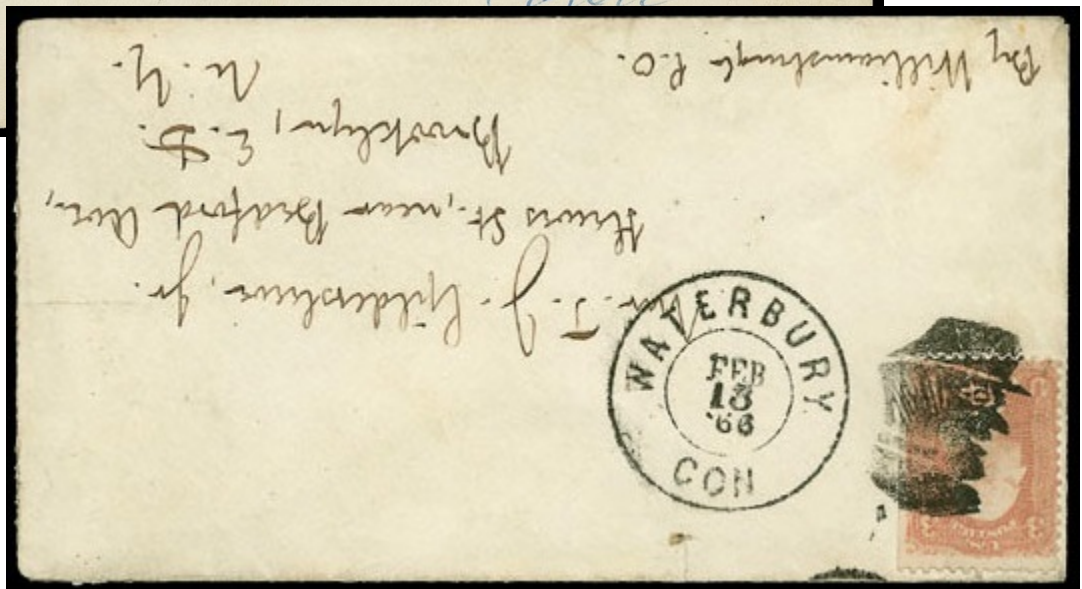
PH-F 11 [USCC 29; Rohloff E-3]
Waterbury, CT □ 2/2/1866-2/15/1866



PH-F 11



PH-F 11



PH-F 11

Figures and Heads



PH-F 12 [USCC 61; Rohloff E-4]
Waterbury, CT □ 4/30/1866-5/22/1866



PH-F 12

Figures and Heads



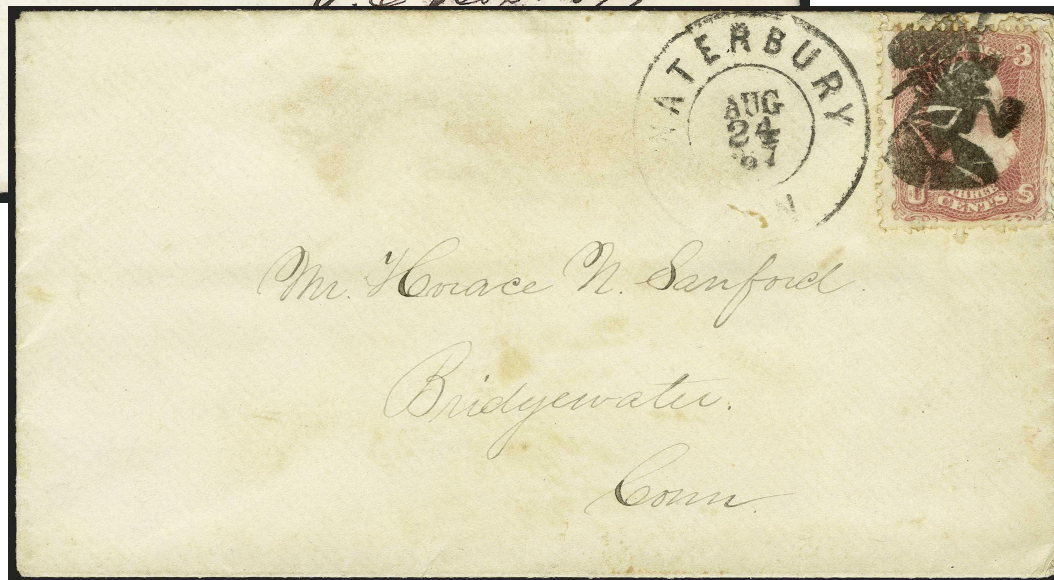
PH-F 13 [Rohloff E-1; USCC 26]
Waterbury, CT 8/24/1867-12/23/1867



PH-F 13



PH-F 13



PH-F 13

Figures and Heads



PH-F 13



PH-F 13

 <p>worn state?</p> <p>PH-F 13a Waterbury, CT <input type="checkbox"/> 1867</p>	  <p>PH-F 13b [Rohloff E-2] Waterbury, CT 10/8/1868</p>			
 <p>Compare with PH-F 17</p> <p>PH-F 15 Waterbury, CT 1866</p>	 <p>"man wearing cap"</p> <p>PH-F15A [USCC 65.5] 1861</p>	 <p>genuine?</p> <p>PH-F 16 Waterbury, CT <input type="checkbox"/> 1866</p>	 <p>PH-F 16A [USCC 55] Waterbury, CT 1861</p>	

Figures and Heads



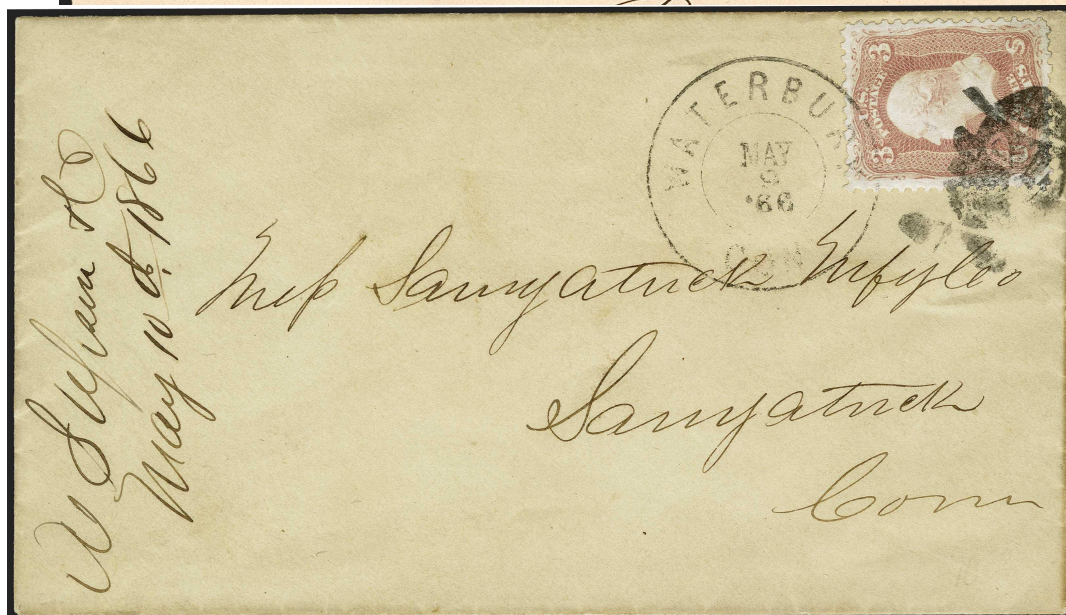
"Bridgeport Fireman"



PH-F 17 [Rohloff E-6; USCC 56]
Waterbury, CT □ 4/25/1866-6/8/1869



PH-F 17



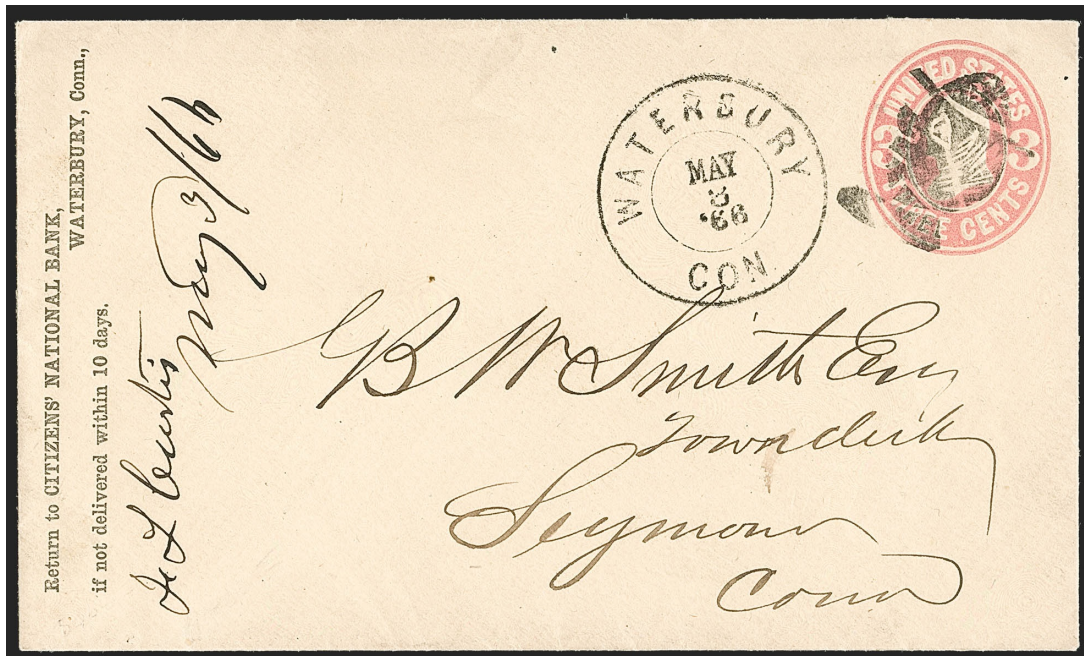
PH-F 17



PH-F 17

PH-F 17

PH-F 17



PH-F 17



PH-F 17



Woven straw hat instead of initials - compare with PH-F 17

PH-F 17A
Waterbury, CT

Figures and Heads



PH-F 18 [USCC 23.5; Rohloff E-8]
Waterbury, CT 6/27/1870?

PH-F 19 [Rohloff E-9]
Waterbury, CT 3/12/1867



PH-F 20 [USCC 34; Rohloff E-7]
Waterbury, CT 1/27/1868-1/28/1868



PH-F 20



"Woman wearing snood"

PH-F 21 [Rohloff E-12; USCC 84]
Waterbury, CT 2/15/1870

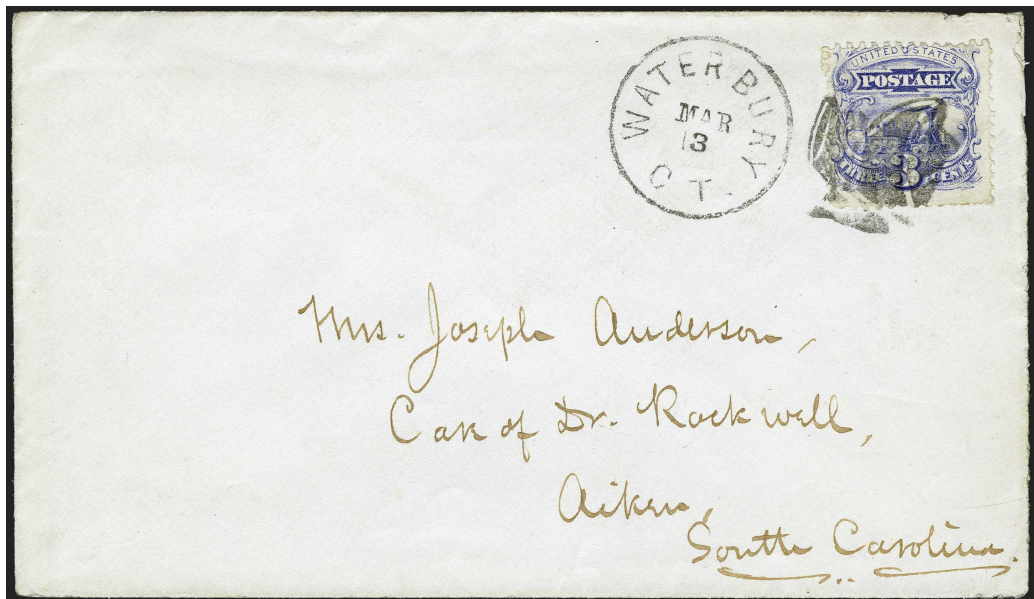
Figures and Heads



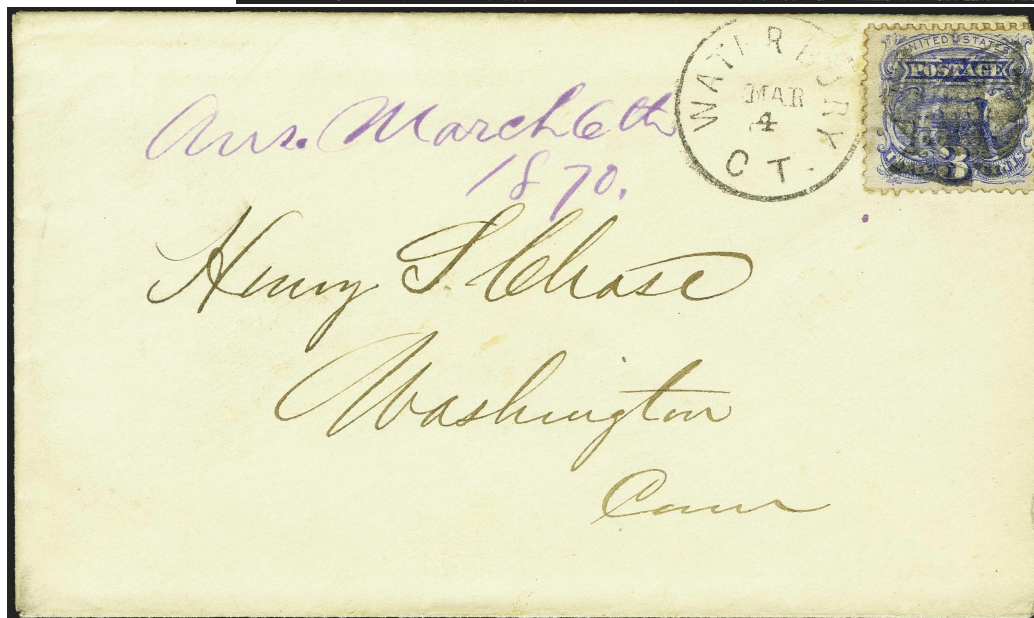
"Woman with bonnet"

Fake?

PH-F 22 [Rohloff E-10; USCC 86]
Waterbury, CT 3/3/1870-3/7/1870



PH-F 22



PH-F 22

MANUFACTURING CO.,
Manufacturers of Brass,
WATERBURY, Conn.,
in 10 days.



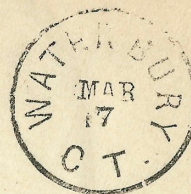
M. R. Gray

PH-F 22

PH-F 22



*M. R. Gray,
85 Buckingham St*



*Mrs Sophie Lane
A. B. D.*

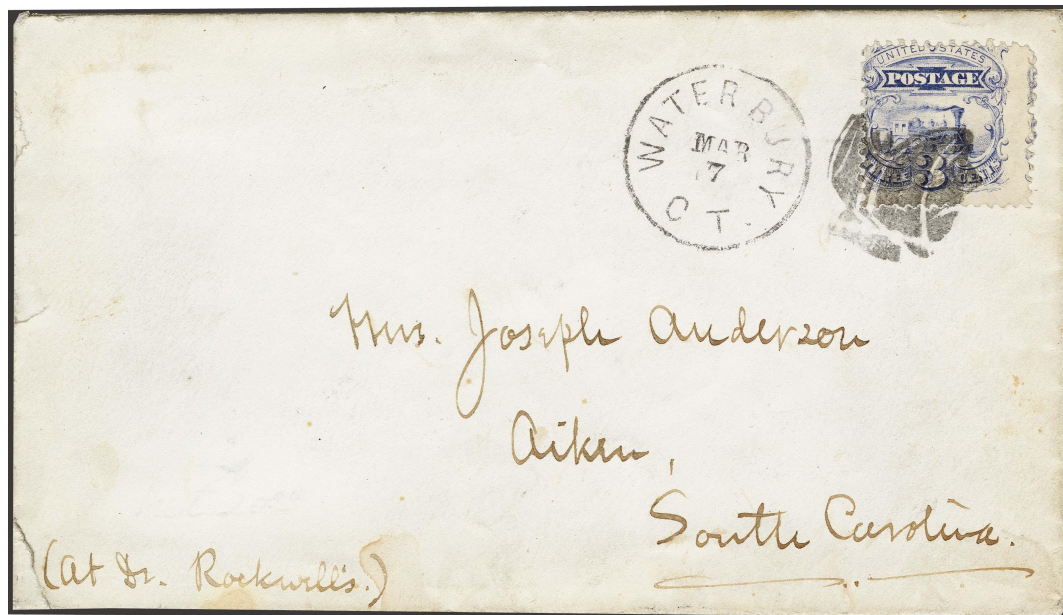
PH-F 22



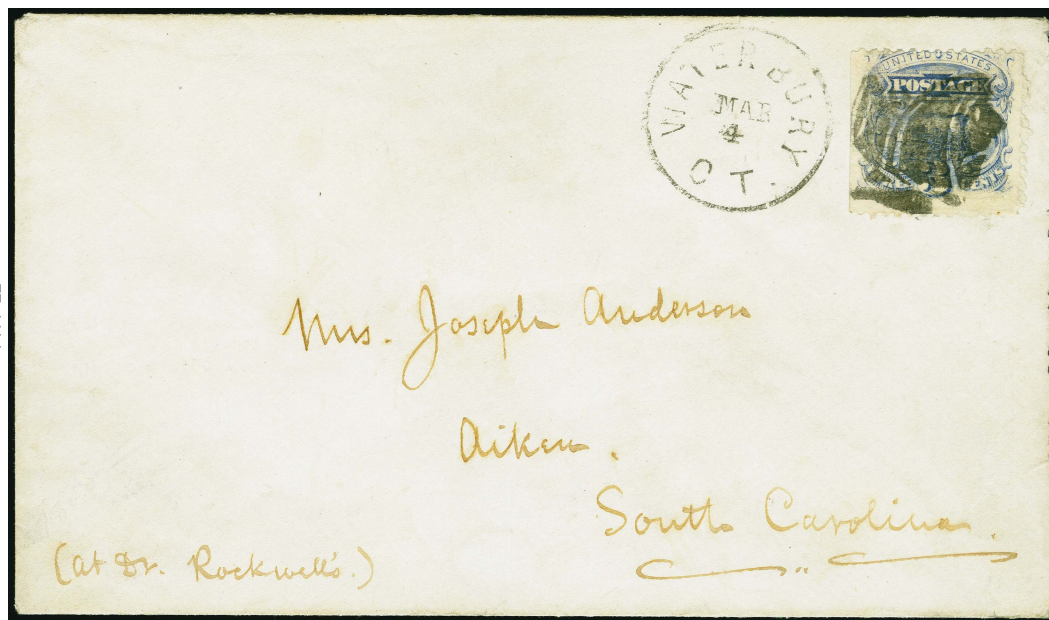
*Mrs Joseph Anderson
Aiker
South Carolina*

PH-F 22

Figures and Heads



PH-F 22



PH-F 22



"Woman with bonnet and snood"

PH-F 23 (Rohloff E-11)
Waterbury, CT 4/27/1866



"ghost"

PH-F 24
1861

Figures and Heads



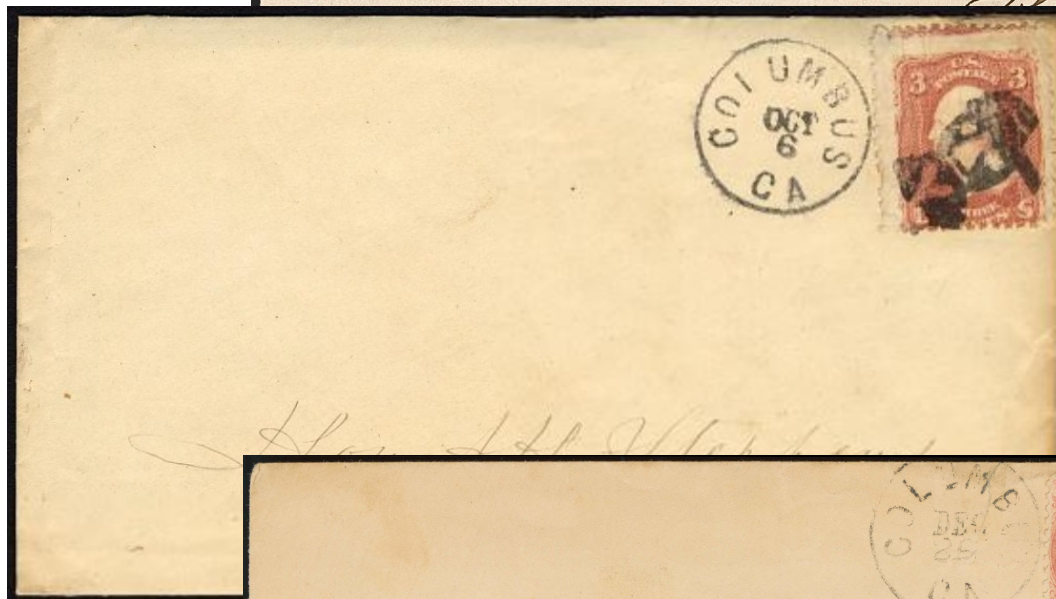
worn device



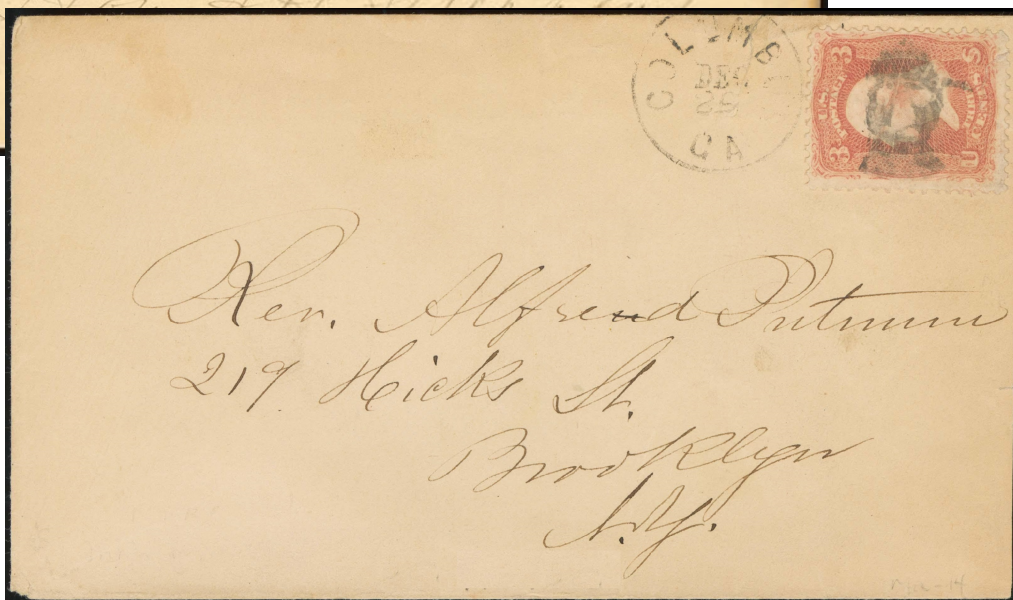
PH-F 25 [USCC 74?]
Columbus, GA 1861-1867



PH-F 25



PH-F 25



PH-F 25

Figures and Heads



"Man wearing hat"



PH-F 27 [USCC 73]
Lynchburg, VA 11/9/1867



PH-F 27



PH-F 27



PH-F 27

Figures and Heads



"man wearing hat"

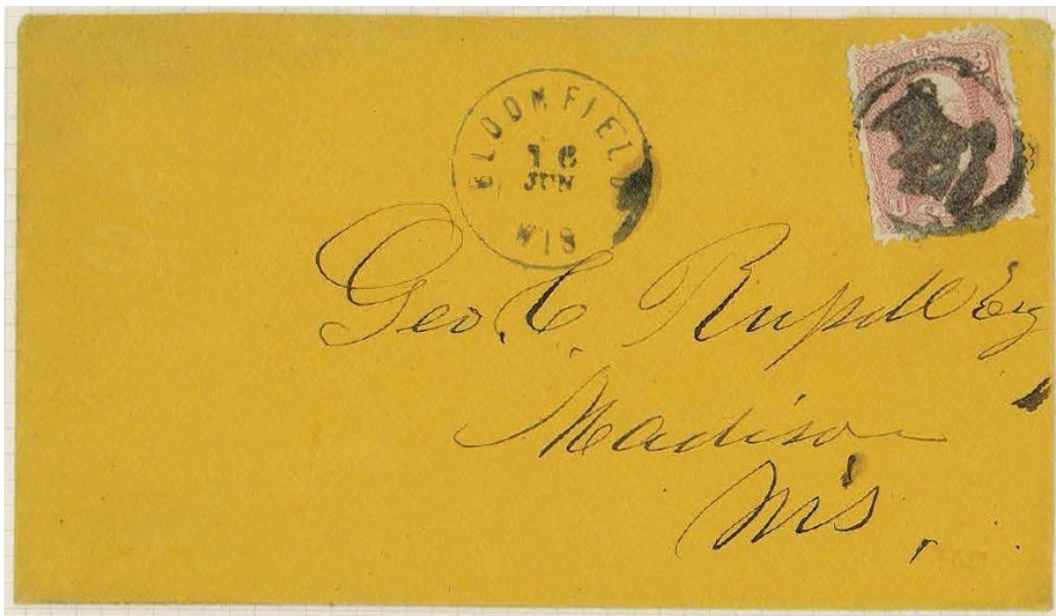
PH-F 27A [USCC 73]
Lynchburg, VA 1861



PH-F 28 [USCC 67]
1861



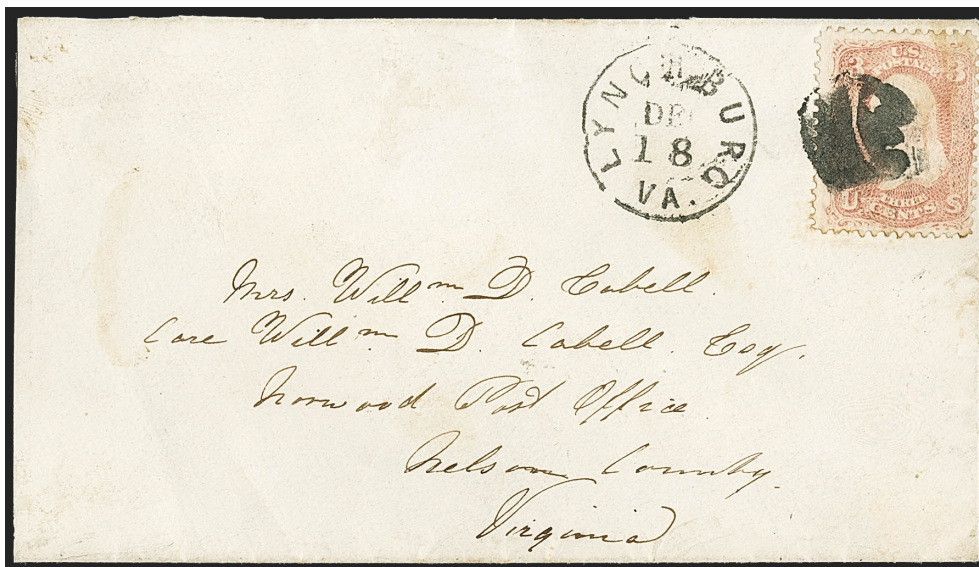
PH-F 29 [USCC 61]
Bloomfield, WI 1861



PH-F 29










PH-F 30
Lynchburg, VA 1861



PH-F 30

Figures and Heads

 <p>PH-F 31 Potsdam, NY 1861-67</p>	 <p>PH-F 32 1861</p>	 <p>"Indian" (?) PH-F 33 [USCC 94] 1861</p>	 <p>PH-F 34 [USCC 126] 1867</p>	 <p>PH-F 35 Cornwall Bridge, CT 1869</p>
 <p>PH-F 36 [USCC 70] West Farlie, VT 1861</p>	 <p>PH-F 36A Calais, VT 1861</p>			



PH-F36



PH-F 36

Figures and Heads



PH-F 36A

PH-F 36A



PH-F 37 [USCC 46]
White House Station, NJ 1861-1869




PH-F 37

Figures and Heads



fake cancel?

PH-F 38 [USCC 47A]
Philadelphia, PA  1861



"man with beard" Abraham Lincoln(?)



PH-F 39 blue [USCC 68]
1861

Figures and Heads



"Devil with pitchfork"



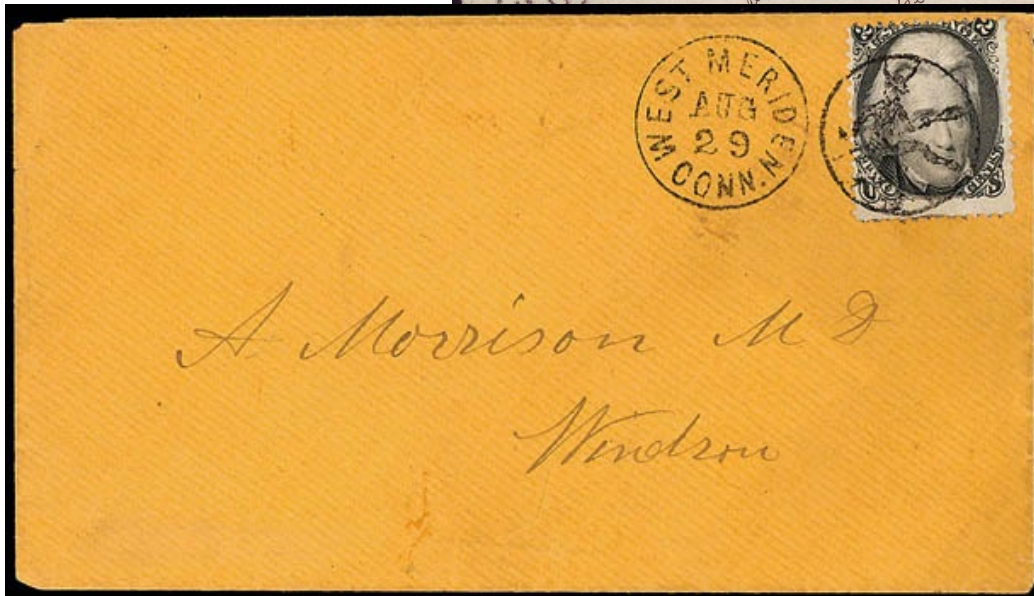
Fake

Fake

PH-F 40 [USCC 5]
West Meriden CT 4/21/1866-8/29/1866



PH-F 40



PH-F 40



PH-F 40



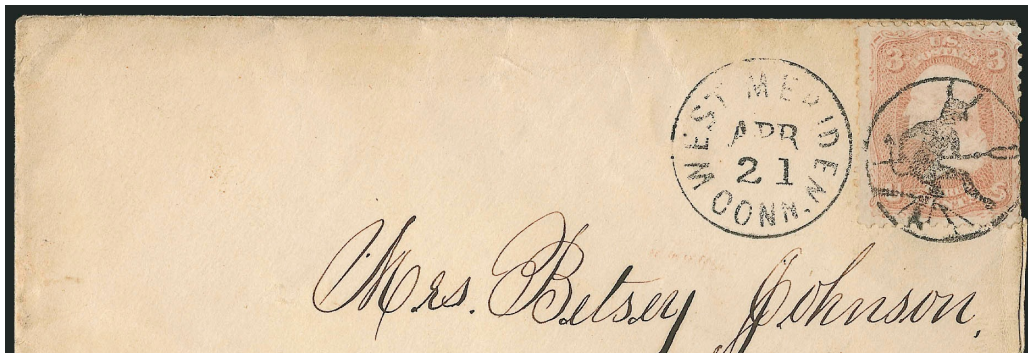
PH-F 40



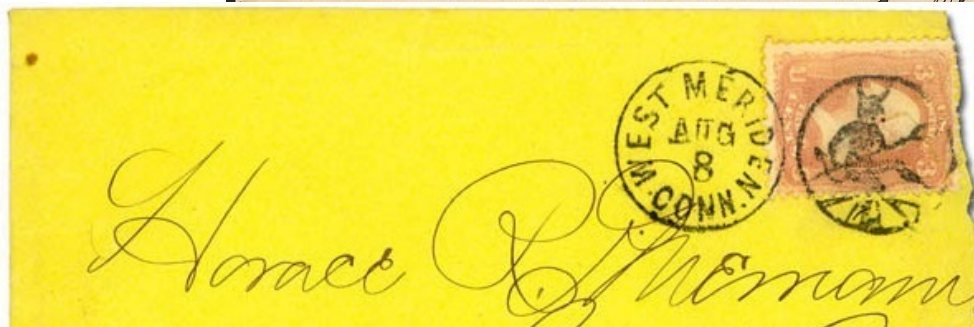
PH-F 40



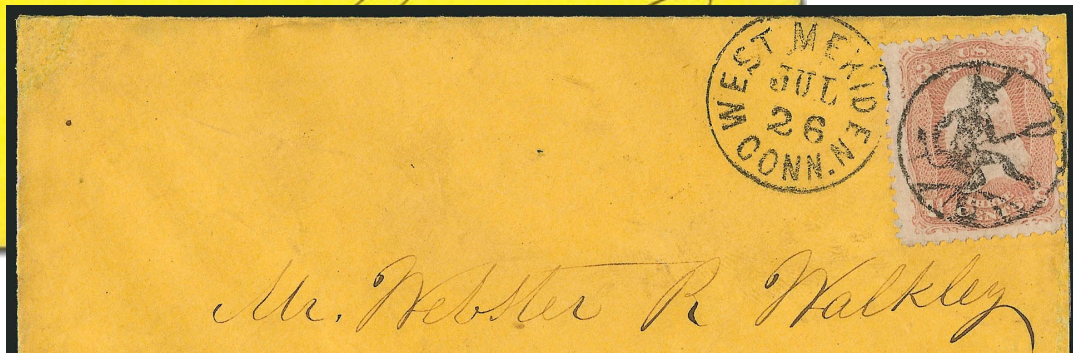
PH-F 40



PH-F 40



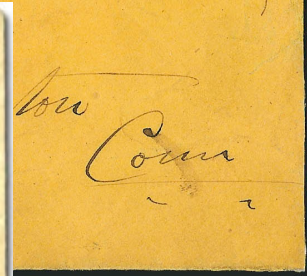
PH-F 40



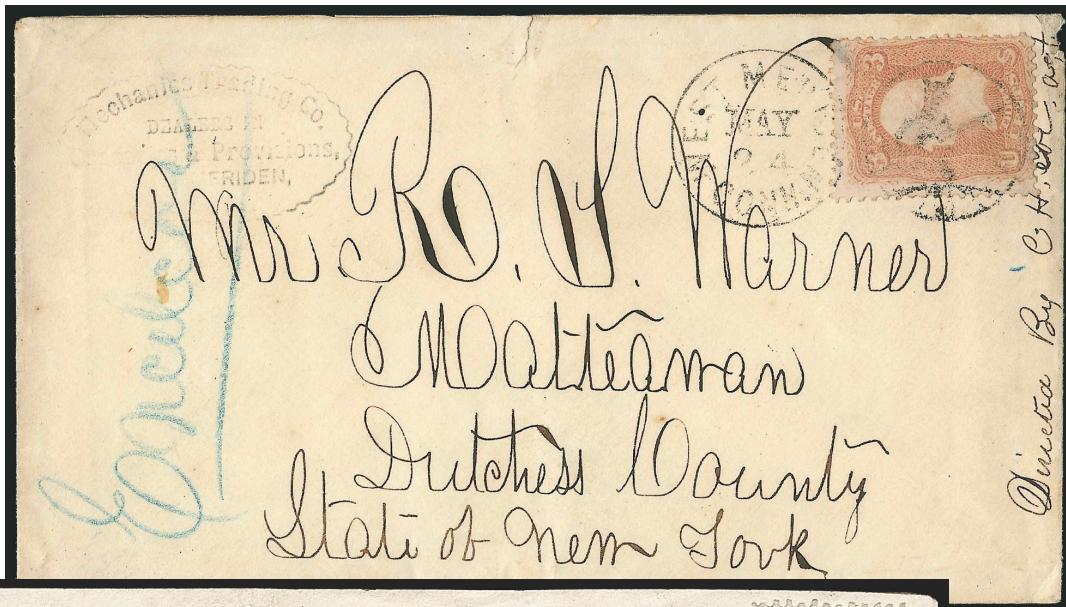
PH-F 40



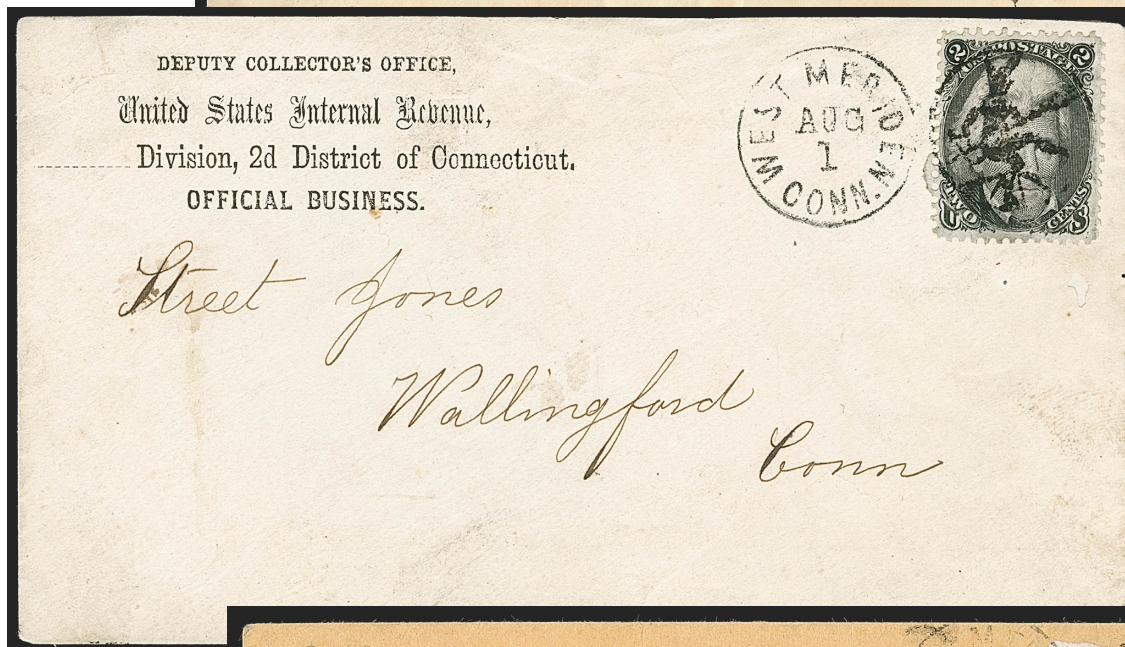
PH-F 40



PH-F 40



PH-F 40



PH-F 40



PH-F 40



PH-F 40



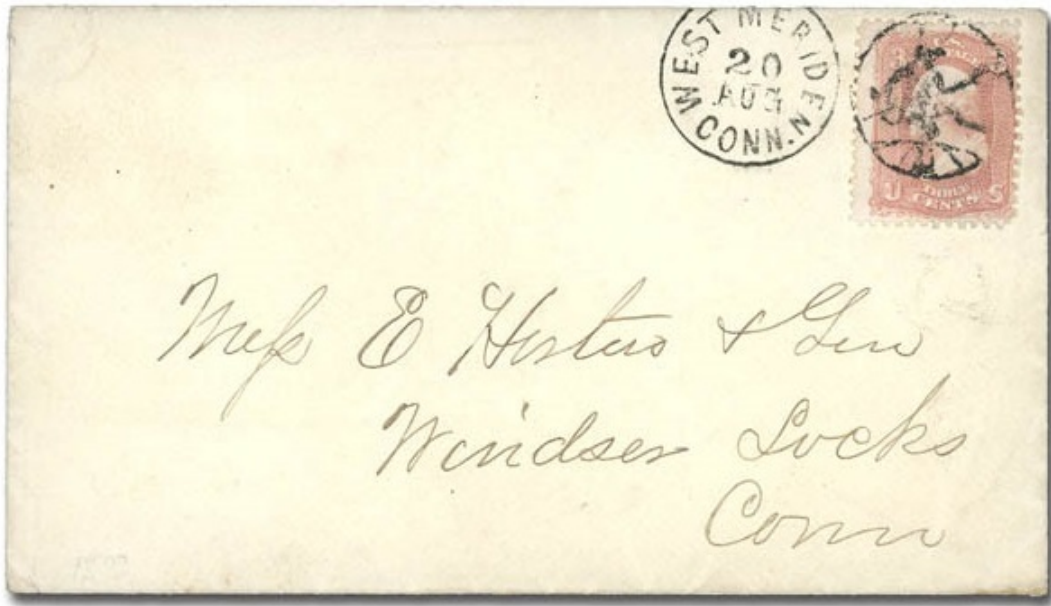
PH-F 40



PH-F 40



PH-F 40



PH-F 40



PH-F 40 Fake

Figures and Heads



"Devil with pitchfork"



PH-F 41 [USCC 4]
Brattleboro, VT 1861-11/26/1867



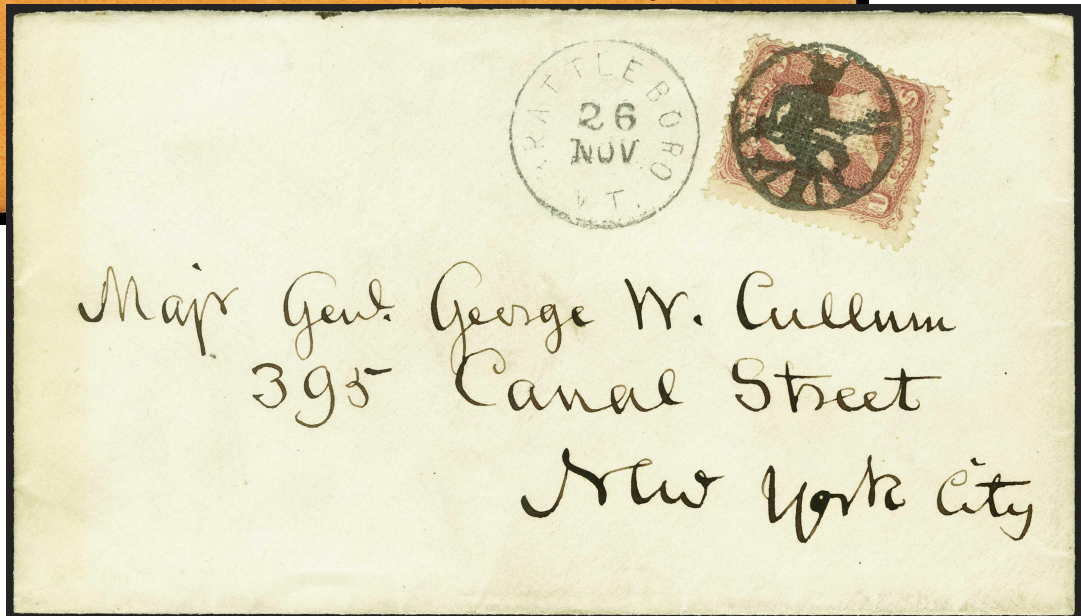
Richard Hill M.D.,
South Hartford
New York

PH-F 41



N. W. Powers Esq.
Townsend,

PH-F 41



Majr Genl George W. Cullum
395 Canal Street
New York City

PH-F 41

Figures and Heads



"Devil"



PH-F 42
1861



"Carpetbagger"

PH-F 43 [USCC 12]
New Orleans, LA 1861

Figures and Heads



"Witch"



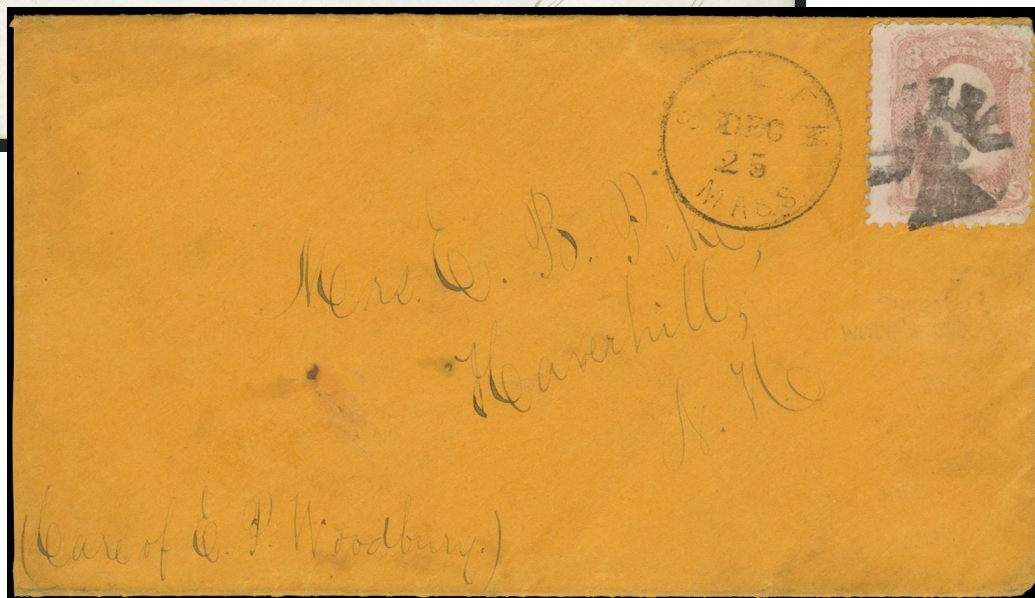
PH-F 44 [USCC 2006]
Salem, MA 1861



PH-F 44





PH-F 44



PH-F 44

Figures and Heads


 <p>"Witch"</p> <p>PH-F 45 Salem, MA 1861</p>	 <p>PH-F 45A Salem, MA 1861</p>		
--	--	--	--



PH-F 45




PH-F 45



PATENTED
JUNE 27 1868

DIPOMBY

D. POMROY,
ORANGE, MASS.
MANUFACTURER AND PROPRIETOR OF THE
New American Heat Regulator
TOWN, COUNTY AND STATE RIGHTS FOR SALE.



Agents Wanted.
Circulars Sent Free,
Giving Explanations.

*C. L. Willson's
Letter Out. Jan'y 11/88*

D. Pomroy,
Orange,
Mass.

PH-F 45

Figures and Heads



Figures and Heads



"gingerbread man"



PH-F 51

Richmond, VA [] 7/16/1867



"stick man"

PH-F 52 [USCC 9]
New York, NY [] 1861-63



"stick man"

PH-F 52A blue
Indianapolis, IN [] 1861



PH-F 51













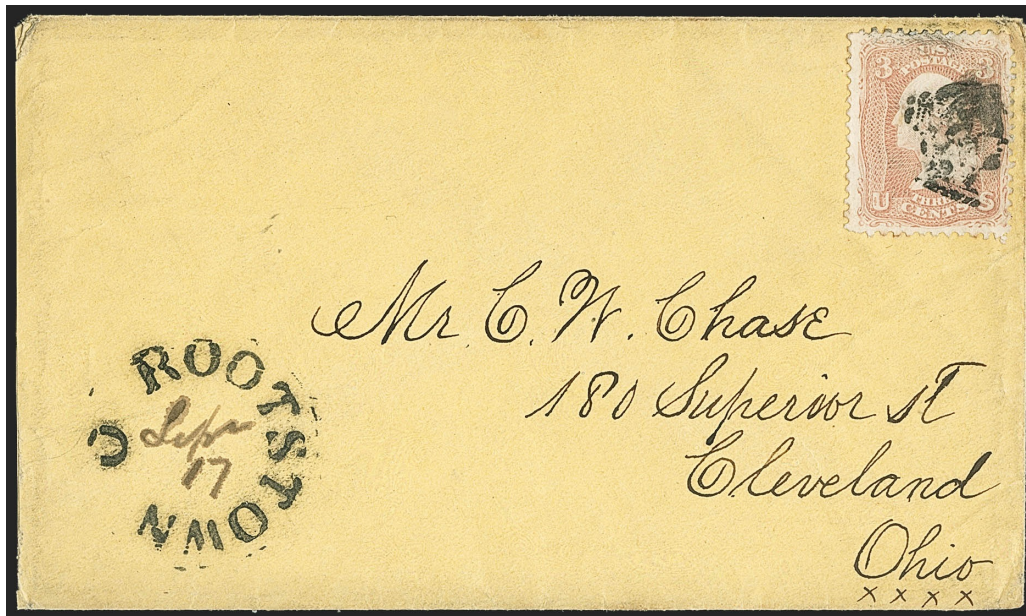
PH-F 51



PH-F 52A

Figures and Heads

 <p>"stick man" PH-F 52B 1861</p>		 <p>"stick man" PH-F 52C 1868</p>	
 <p>"gingerbread man" PH-F 53 1869</p>	 <p>"gingerbread man" see PH-F 126 PH-F 54 Boston, MA 1861</p>	 <p>"gingerbread man" PH-F 55 Brookfield, CT 1866</p>	 <p>"George Washington" PH-F 56 blue Head Tide, ME(?) 1861</p>
 <p>PH-F 57 [USCC 59] Tunkhannock, PA 1861</p>		 <p>"Benjamin Franklin" PH-F 58 1861</p>	
 <p>PH-F 59 [USCC 43] Bristol, CT 1866</p>	 <p>PH-F 60 Rootstown, OH 1861</p>	 <p>PH-F 61 1861</p>	 <p>PH-F 62 1861</p>



PH-F 60

Figures and Heads



PH-F 63
Owosso, MI [] 3/23/1867?



compare with PH-F 8

PH-F 64
Corry, PA [] 1861



PH-F 63



"cameo"



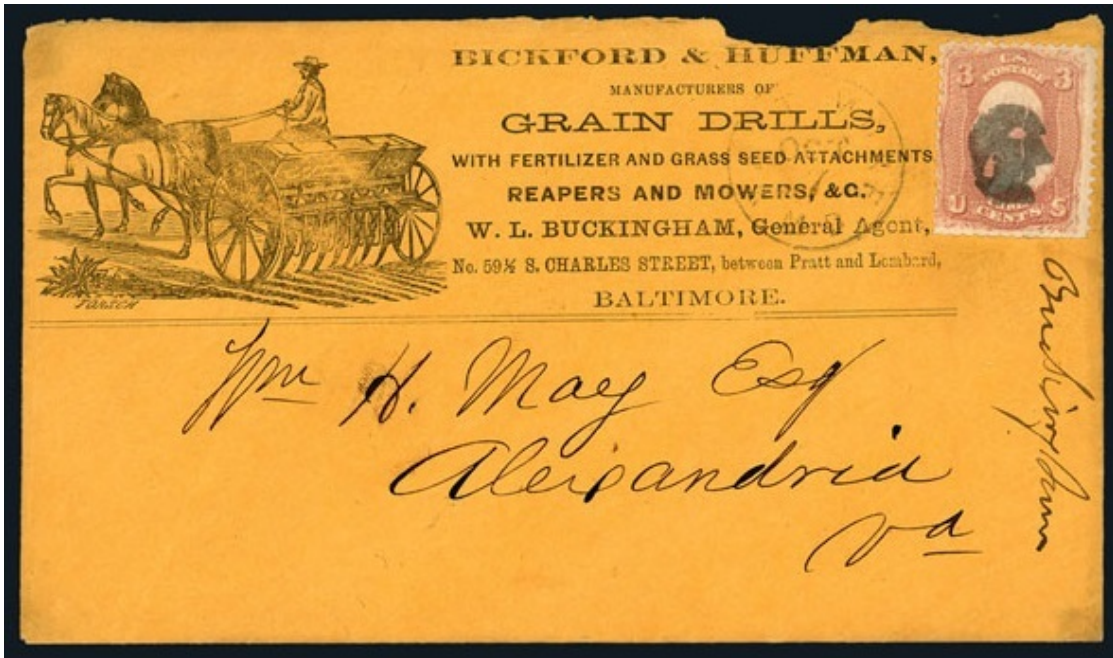
PH-F 65
1861



PH-F 66 [USCC 44]
Baltimore, MD 1861



PH-F 67
1861



Figures and Heads



"Clown Face"

PH-F 68 [USCC 376]
Elizabeth, NJ □ 1861



"Clown Face"

PH-F 69
Burlington, IA □ 1867



PH-F 68



PH-F 68



PH-F 70
Washington, DC □ 1861-67



PH-F 71
1861

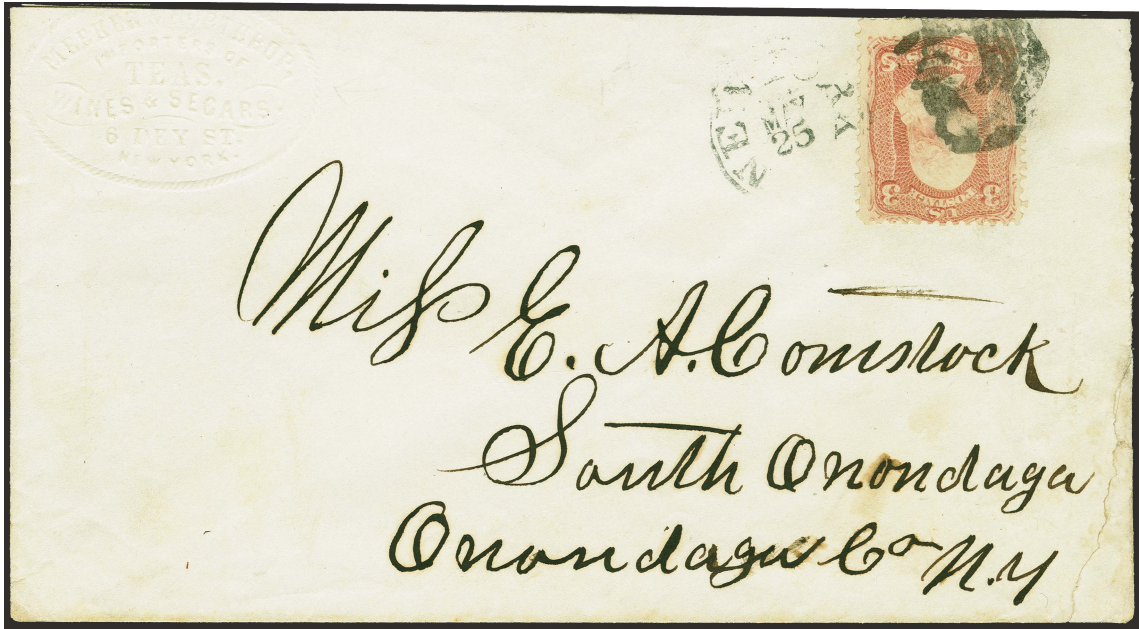
Figures and Heads



"Union Soldier"



PH-F 72 [USCC 69]
New York, NY 5/5/1866



PH-F 72



PH-F 72

Figures and Heads



"Union Soldier"



Fake?





PH-F 73

New York, NY 5/5/1966



PH-F 73

Figures and Heads

 <p>"Union Soldier"</p> <p>PH-F 74 [USCC 64] Cleveland, OH <input type="checkbox"/> 1861</p>	 <p>"bearded man"</p> <p>PH-F 75 [USCC 71] Bristol, CT <input type="checkbox"/> 1861</p>	 <p>"bust of Fremont" (?)</p> <p>PH-F 76 blue Atlanta, GA <input type="checkbox"/> 1861</p>	 <p>PH-F 77 [USCC 47] Gouverneur, NY 1861</p>
---	---	--	--



PH-F 76

 <p>"bearded man" Abraham Lincoln?</p> <p>PH-F 78 [USCC 45] Gouverneur, NY 1861</p>	 <p>PH-F 79 Waterbury, CT(?) 1869</p>	 <p>PH-F 80 [USCC 47C] New Boston, MA <input type="checkbox"/> 1861</p>	
--	--	--	--



PH-F 80

Figures and Heads

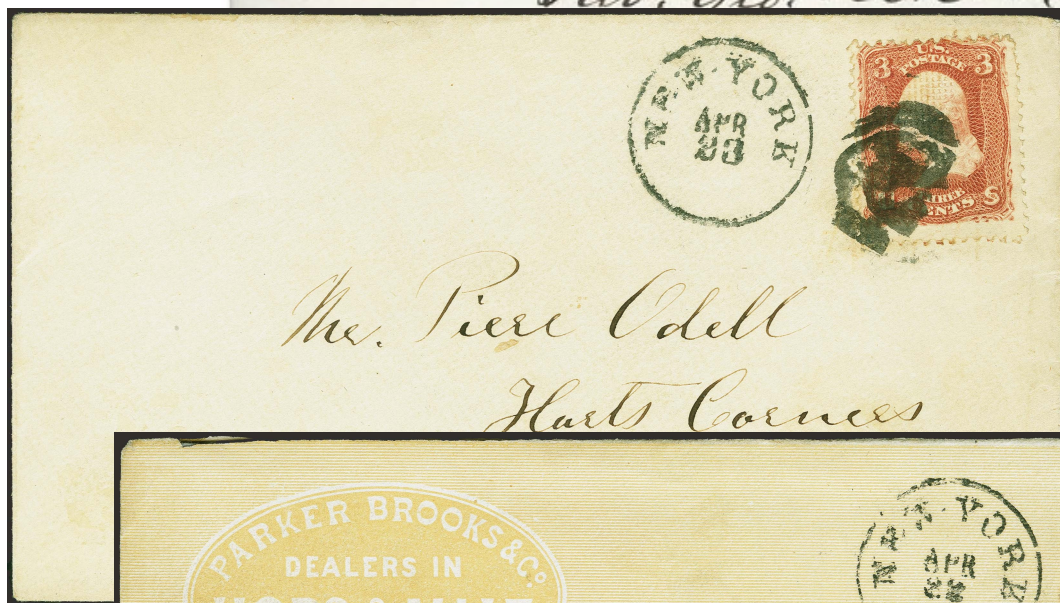


"Roman Soldier"

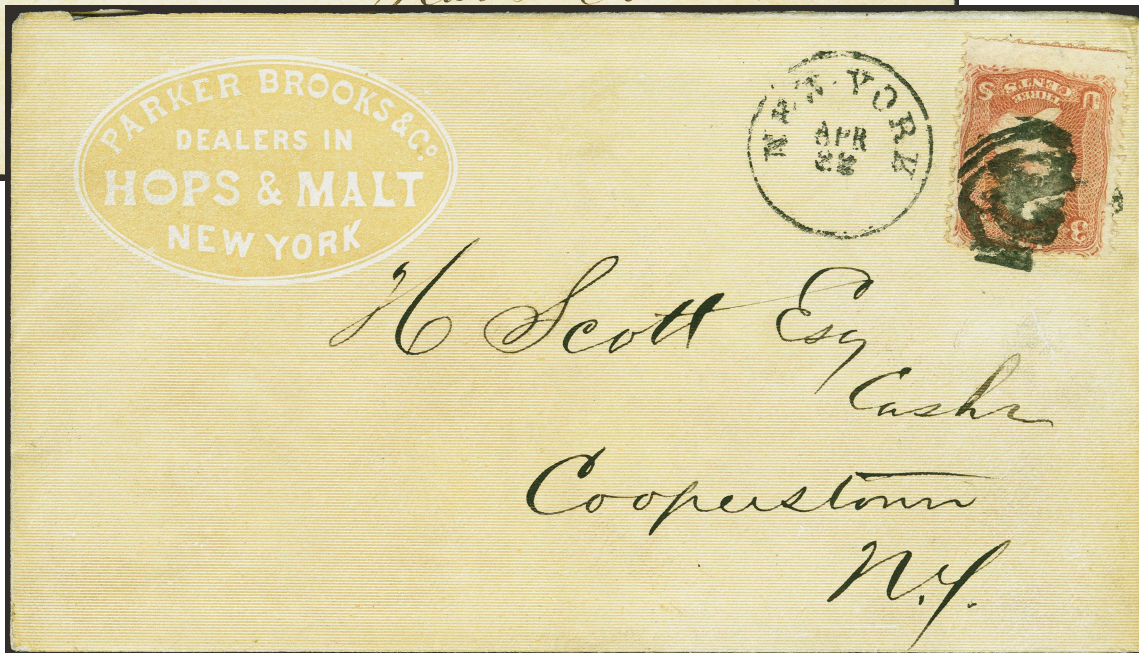
PH-F 81 [USCC 42]
New York, NY 4/22/1869-4/23/1869



PH-F 81




PH-F 81



PH-F 81

Figures and Heads

 <p>PH-F 82 [USCC 63] 1869</p>	 <p>PH-F 83 Whitestown, IN(?) 1861</p>	  <p>PH-F 84 1861</p>	
 <p>"clown face"</p> <p>PH-F 85 blue Cincinnati, OH 1861</p>	 <p>PH-F 86 Philadelphia, PA 1861</p>		



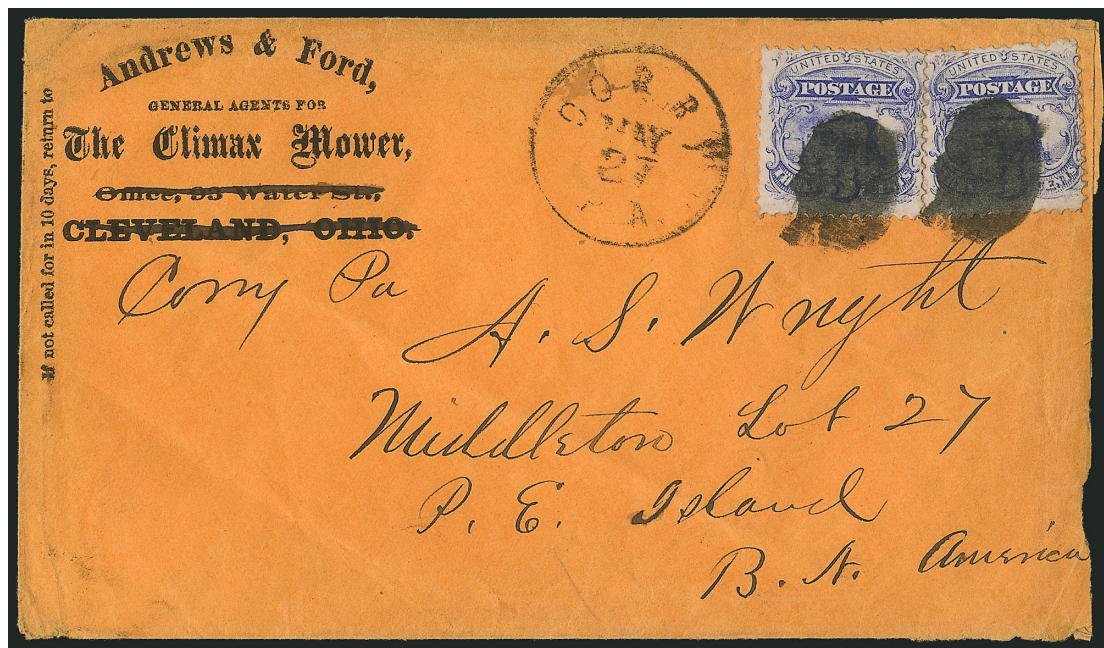
PH-F 86

Figures and Heads



"man's head with goatee"

PH-F 87 [USCC 62]
Corry, PA 5/18/1870?-5/27/1870?



not called for in 10 days, return to

Andrews & Ford,
GENERAL AGENTS FOR
The Climax Mower,
Office, 53 Water St.,
CLEVELAND, OHIO.

Corry Pa

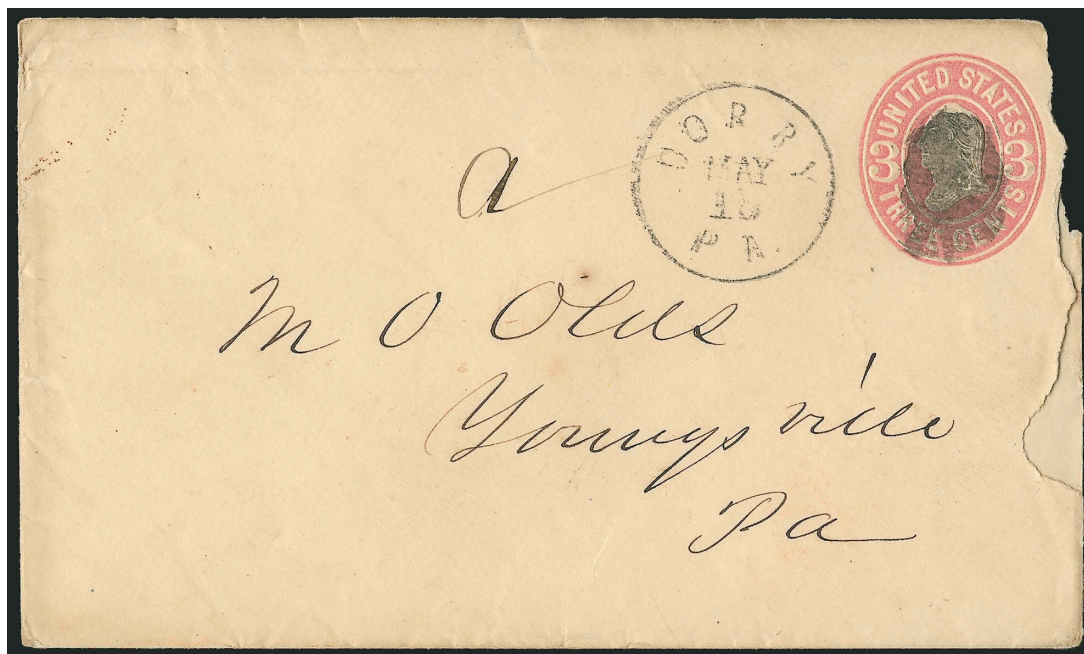
A. S. Wright

Middletown Lot 27

P. E. Island

B. A. America

PH-F 87



PH-F 87

a

CORRY PA
MAY 18
1870

UNITED STATES
POSTAGE
THREE CENTS

M O Olds

Youngs ville

Pa

Figures and Heads



"School Marm"



PH-F 88
1869



"Man in the Moon"



PH-F 89 [USCC 99; Simpson pg149-279]
Mason, OH 1857



PH-F 89



PH-F 89



PH-F 89

Figures and Heads



"Man in the Moon"

PH-F 90
1861



"Man in the Moon"

PH-F 91 [USCC 22; Blake-Davis 1173]
Boston, MA 1861-67



*Miss Mary R. Addison
Care Rev. T. B. Fox
Boston*

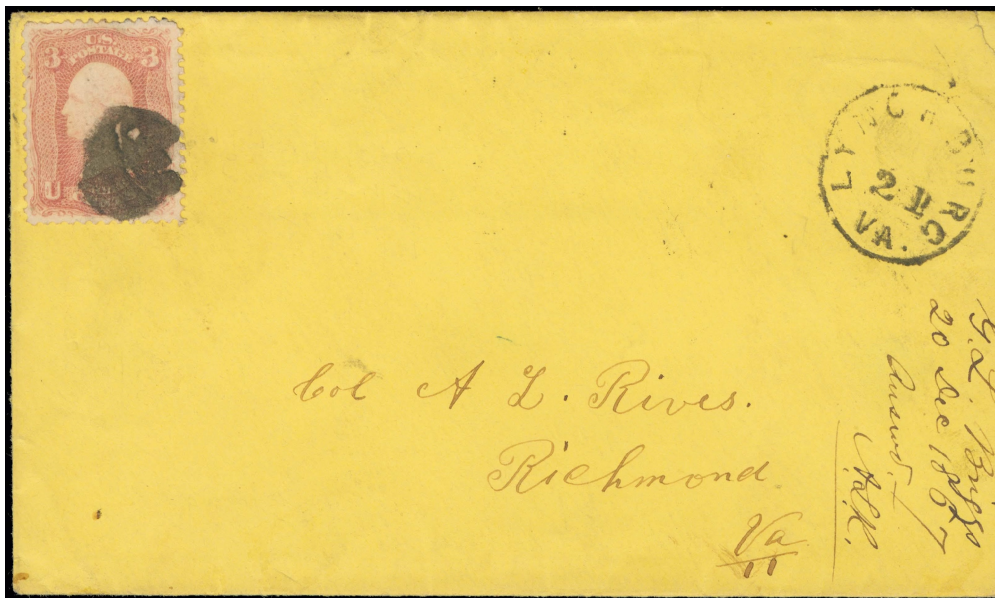
PH-F 91



PH-F 92
Lynchburg, VA 1861



PH-F 93
1861



*Col A L. Rives.
Richmond
Va*

*Genl. Rives
20 Dec 1867
Anson T. App.
M.P.P.*

PH-F 92

Figures and Heads



PH-F 94
Memphis, NY □ 1861



PH-F 95 blue
Dubuque, Iowa □ 1861



PH-F 95



"Indian head"



PH-F 96
Profile House, NH □ 1857-1861



PH-F 96A
[Simpson pg143-201]
Profile House, NH



PH-F 97
Elmira, NY □ 1861



"double profile"

PH-F 98
1861



PH-F 99
St. Paul, MN or North
Cambridge, MA 1861



"Indian head"



PH-F 100
Atlanta, GA □ 1861

Figures and Heads



"Indian head"

PH-F 101 [USCC 106]
Mobile, AL 1861



"Indian head" (?)

PH-F 102
1867



"Indian head"

PH-F 103
1861



"Indian head"


PH-F 103A
1861

Figures and Heads



"Preacher in Pulpit"



PH-F 104 [USCC 18.5; Blake-Davis 1188]
Boston, MA  1861



PH-F 104



PH-F 104



PH-F 104

Figures and Heads



PH-F 105 blue
1861



PH-F 106
1869



"Blacksmith"



PH-F 107 [USCC 1]
Bloomingburgh, NY 1861



PH-F 108
1867



PH-F 107



PH-F 109
1869



PH-F 110
Humphreysville, PA 1866



"Spook"

PH-F 111 blue
Vicksburg, MS 1861



PH-F 110

Figures and Heads



PH-F 111



PH-F 112
Stamford, CT □ 1868



PH-F 113
Cambridgeport, MA □ 1861



PH-F 114
Corry, PA □ 1861



PH-F 112



PH-F 113

Figures and Heads



PH-F 114



"Gingerbread man"

PH-F 117 blue [Simpson pg149-300]
Muncie, PA 1857



"Indian head"

PH-F 118 [USCC 104]
1861



"Indian head"

PH-F 119 [USCC 101]
1861



"Indian head"

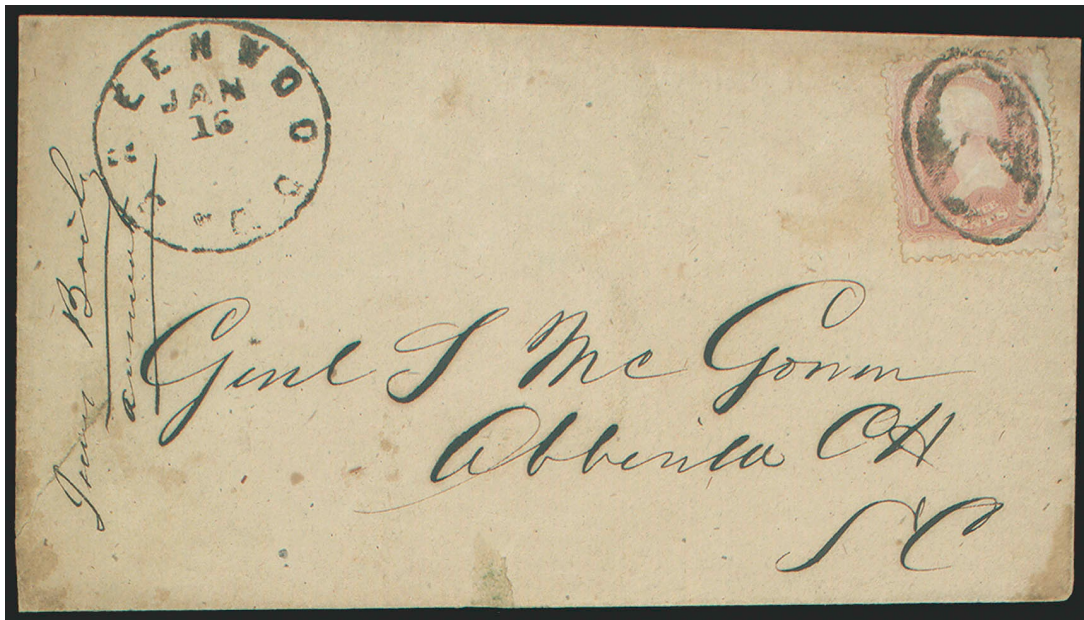
PH-F 120 [USCC 96]
1861












"Woman's portrait"

PH-F 121 brown [USCC 85]
Greenwood, NC 1861

Figures and Heads



PH-F 121

 <p>"Man's head"</p> <p>PH-F 122 [USCC 65] Lynchburg, VA 1861</p>	 <p>"Man's head with goatee"</p> <p>PH-F 123 [USCC 60] Craigville, PA 1869</p>	 <p>"crude man's head"</p> <p>PH-F 124 [USCC 54] 1861</p>	 <p>"Woman's head"</p> <p>PH-F 125 [USCC 48] Evansville, IN 1861</p>	 <p>see PH-F 54</p> <p>PH-F 126 [USCC 11] Boston, MA 1861</p>
 <p>PH-F 128 [USCC 24.5] 1861</p>	 <p>"Woman's head"</p> <p>PH-F 129 [USCC 83] Oswego, NY 1861</p>	 <p>"Woman's head" worn state?"</p> <p>PH-F 129a [USCC 87] Oswego, NY 1861</p>	 <p>odd head</p> <p>PH-F 130 [USCC 522] 1861</p>	



updated September 6, 2025 (2:47pm)