

Pictorial - Elephants, Squirrel, Pig, etc.



"Pig" or "Mouse"

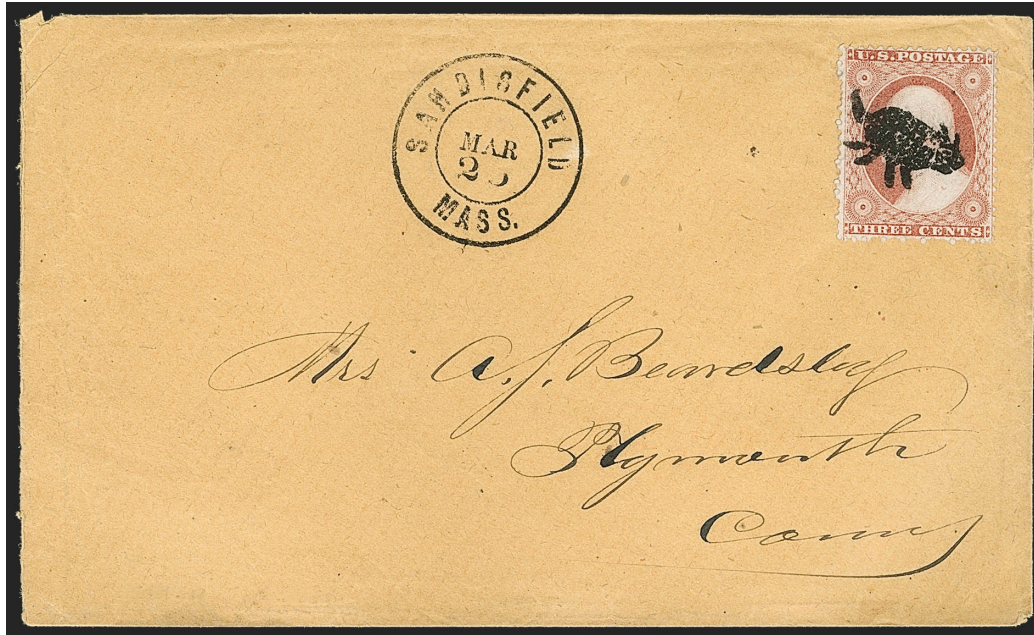


PA-E 1 [Simpson pg139-135]
Sandisfield, MA 1857



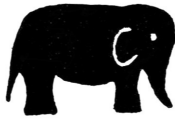
"Pig"

PA-E 1A [USCC 428]
Sandisfield, MA 1861



PA-E 1

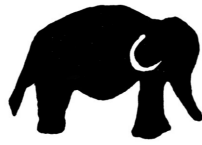
Pictorial - Elephants, Squirrel, Pig, etc.



"Elephant"



PA-E 2 [Rohloff A-2]
Waterbury, CT [] 4/18/1866

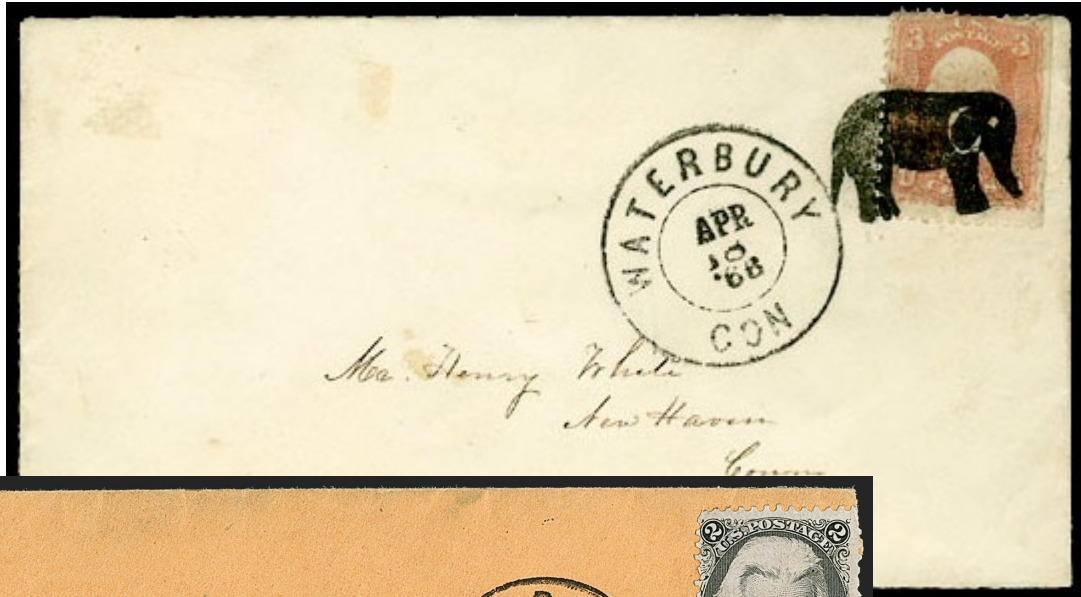


"Elephant"

PA-E 3 [Rohloff A-1]
[Rohloff A-1; USCC 417]
Waterbury, CT [] 1865(?)



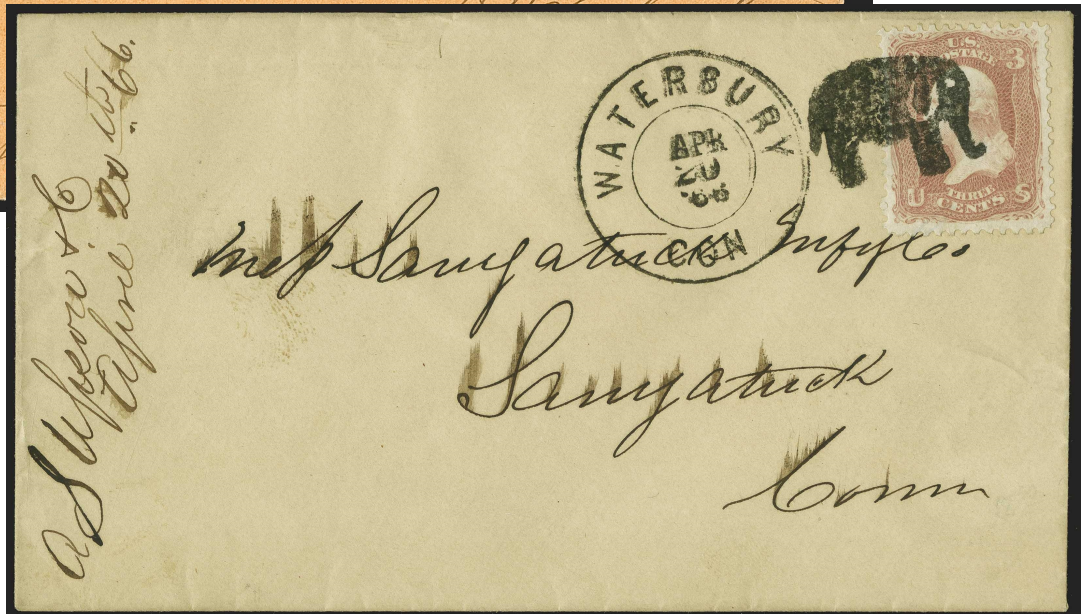
PA-E 3A [Rohloff A-3]
Waterbury, CT [] 4/18/1866-
4/20/1866



PA-E 2








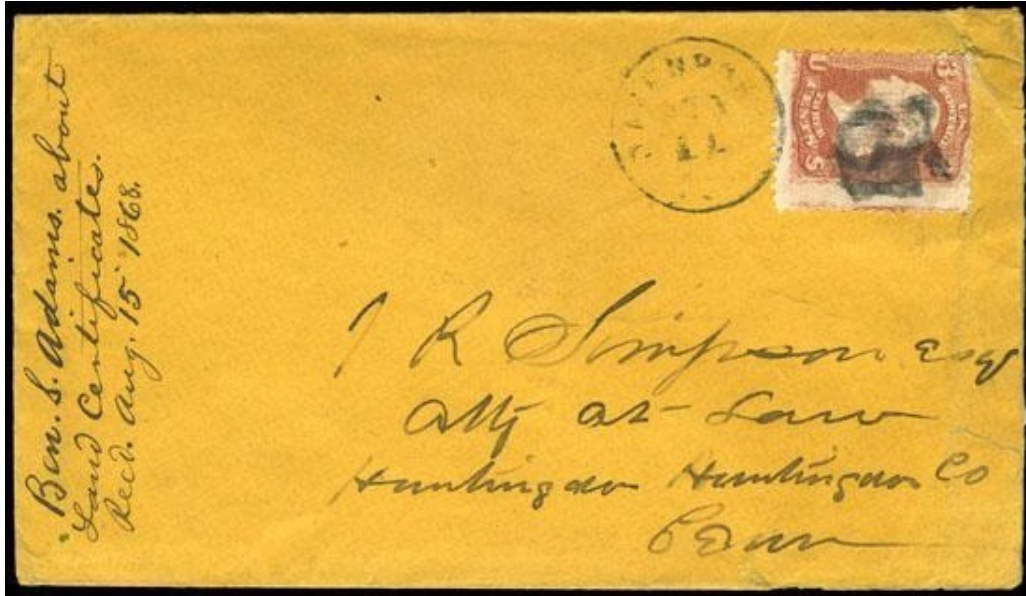
PA-E 2






PA-E 3A

Pictorial - Elephants, Squirrel, Pig, etc.

 <p>"Squirrel"</p> <p>PA-E 4 1861</p>	 <p>"Elephant" (?)</p> <p>PA-E 5 Davenport, IA 8/11/1868</p>	 <p>"Horse Head" (?)</p> <p>PA-E 6 1867</p>	 <p>"Animal in frame"</p> <p>PA-E 7 1861</p>	 <p>"Animal in frame"</p> <p>PA-E 8 Windham Station, OH 1861</p>
--	---	--	---	---



 <p>Pig?</p> <p>PA-E 9 [USCC 399.5] Waterbury, CT 1861</p>	 <p>Pig?</p> <p>PA-E 10 [USCC 402] 1861</p>	 <p>"Rabbit"</p> <p>PA-E 11 [USCC 423] Quincy, MA 1861</p>		
---	--	---	--	--

Pictorial - Elephants, Squirrel, Pig, etc.



updated June 14, 2022 (10:22am)