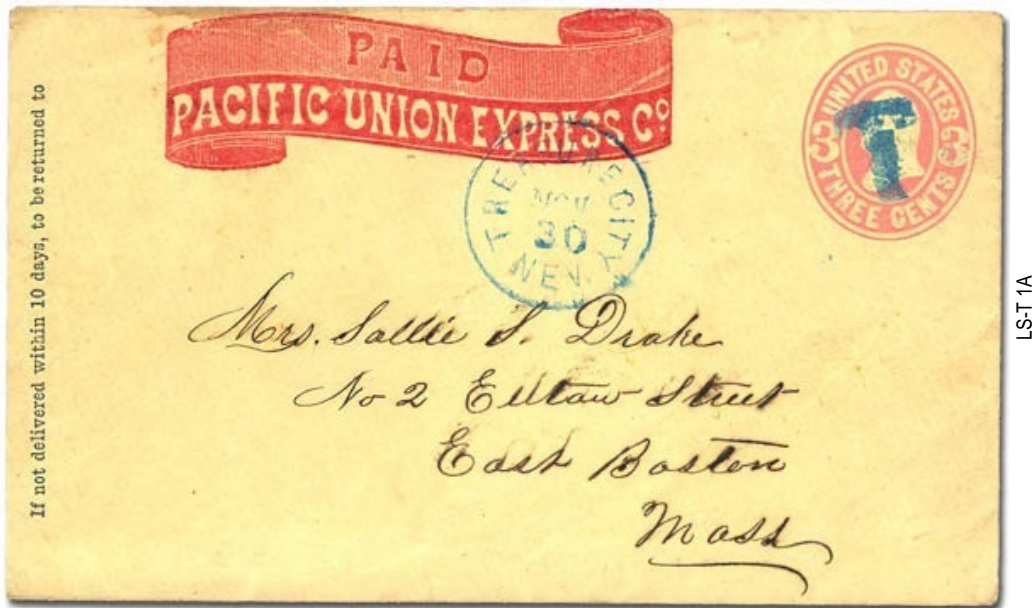


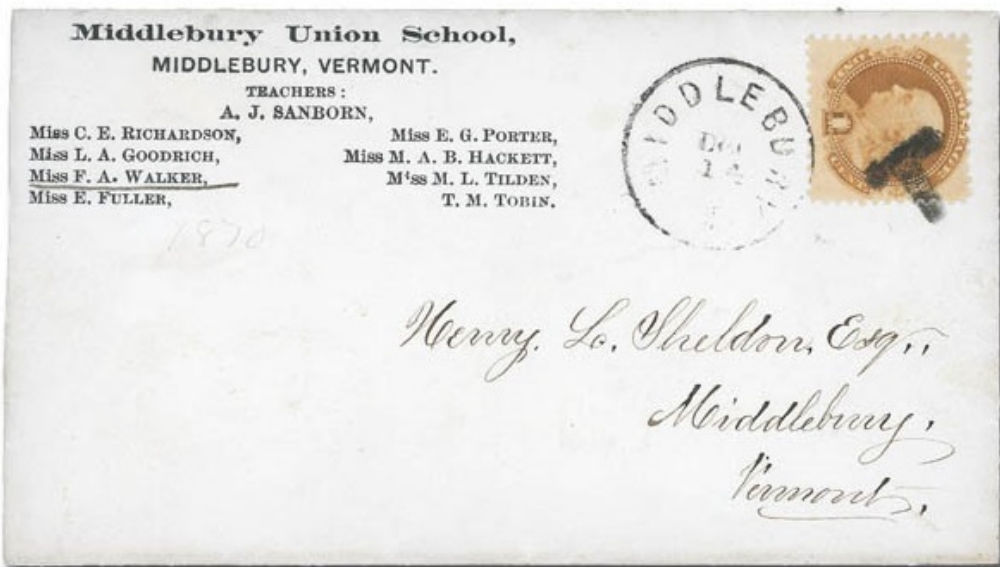
Letters - Simple

<p style="text-align: center;">T</p> <p style="text-align: center;">LS-T 1 blue Toledo, OH <input type="checkbox"/> 1861</p>	 <p style="text-align: center;">LS-T 1A blue Treasure City, Nevada Territory <input type="checkbox"/> 1861</p>	<p style="text-align: center;">T</p> <p style="text-align: center;">LS-T 3 Terre Haute, IN 1869</p>	
---	---	--	--



LS-T 1A

<p style="text-align: center;">T</p>	 <p style="text-align: center;">LS-T 4 Middlebury, VT <input type="checkbox"/> 1869</p>	<p style="text-align: center;">T</p> <p style="text-align: center;">LS-T 5 Tuscola, IL <input type="checkbox"/> 1869</p>
---	--	---



LS-T 4

Letters - Simple

T

LS-T 2
Towanda, IL 1867



LS-T 2A
Terryville, CT 1863

T

LS-T 2B
Waterbury, CT 1863



LS-T 2C
Torrington, CT 1861



LS-T2A



LS-T2B

Letters - Simple



LS-2C



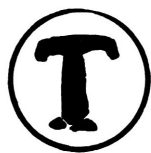
LS-T 6 blue
1869



LS-T 7
Middlebury, VT □ 1869



LS-T 8
Titusville, PA □ 1861



LS-T 9
1861

Letters - Simple



LS-T 10 [USCC6194]
Thomaston, CT 1861



LS-T 10



LS-T 10



LS-T 11
Talcottville, CT 1861

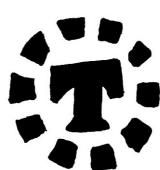


LS-T 12
Troy, NH 1861

Letters - Simple

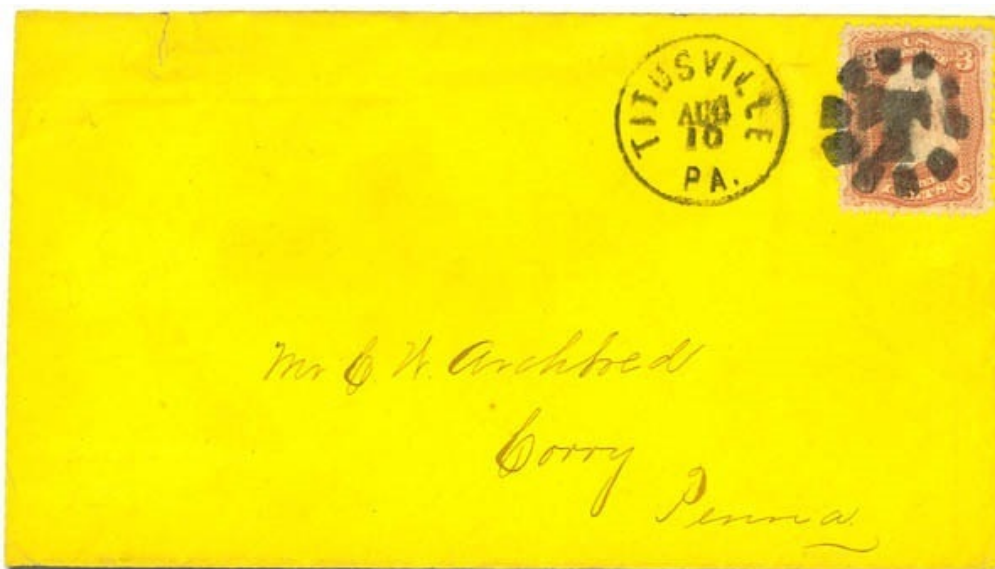


LS-T 11



ten segments

LS-T 13 [USCC 6210]
Titusville, PA 1861



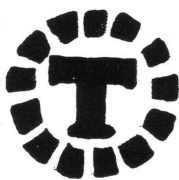
LS-T 13



eight segments

LS-T 13A
1861

Letters - Simple

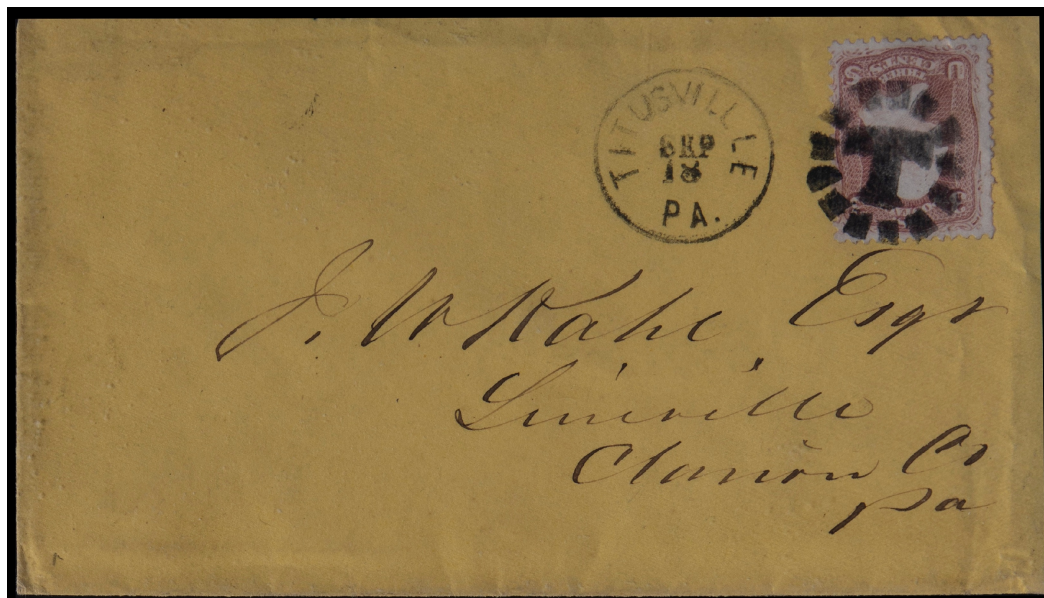


thirteen segments

LS-T 15 [USCC 6210]
Titusville, PA 1867



LS-T 15



LS-T 15

Letters - Simple



LS-T 16 blue
Toledo, OH □ 1/26/1867



LS-T 16



LS-T 17
Titusville, PA □ 1861-1869



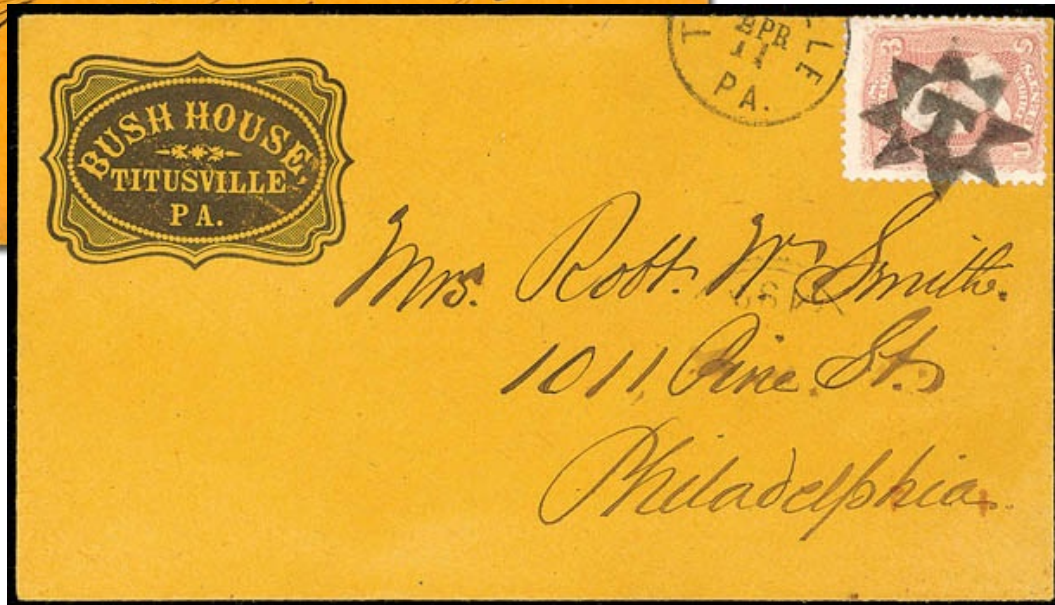
LS-T-17



LS-T-17

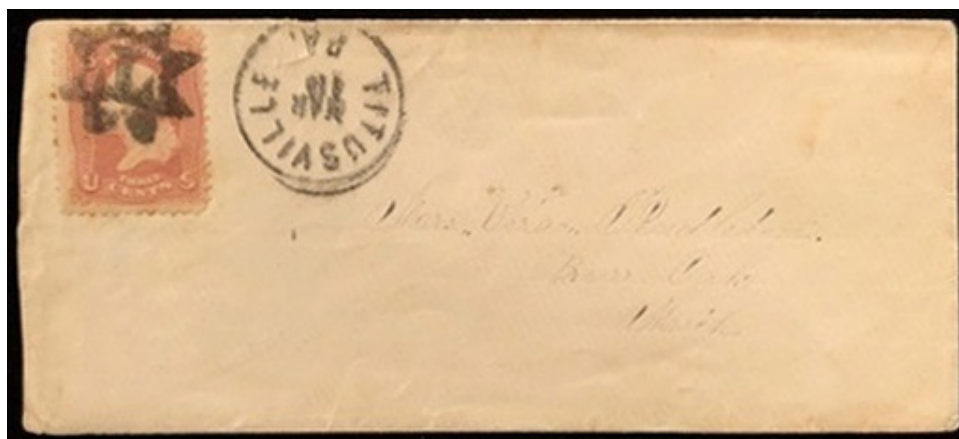
*Benjamin
Albany Co
N.Y.*

Henry W. Arnold Esq



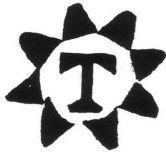
LS-T-17

*Mrs. Robt. W. Smith
1011 Pine St.
Philadelphia*



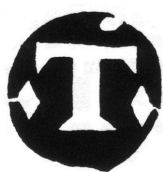
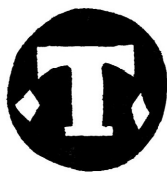
LS-T-17

Letters - Simple



LS-T 18 [USCC 6188]
Templeton, MA 1861

Letters - Simple



LS-T 19 [USCC 6218]
Templeton, MA 1861



LS-T 19



LS-T 19



LS-T 19

Letters - Simple



LS-T 20
Terryville, CT 1861



LS-T 20A
1869



LS-T 21 blue [USCC 6225]
Toledo, OH 1869



LS-T 22
1869



LS-T 20



LS-T 21



LS-T 23
Toulon, IL 1861



compare with CR-C 24
PS-C 2
Chattanooga, TN 1867



Japanese "Kanji" for person "Hito" (?)



LS-T 24
1869



LS-T 25
1861

Letters - Simple



updated April 9, 2024 (9:34am)