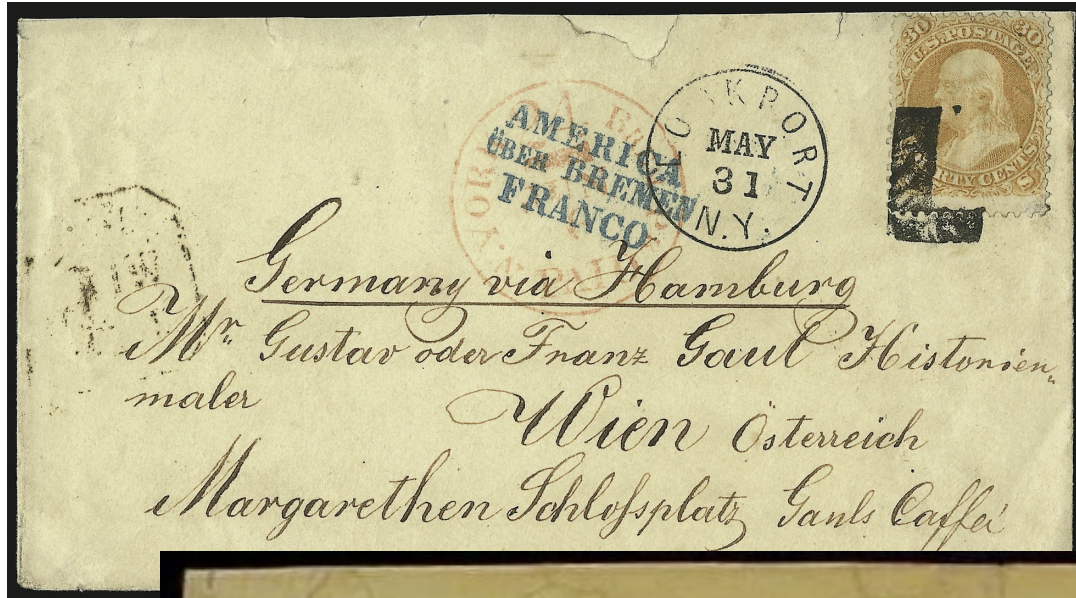


Letters - Simple



LS-L 1
Lockport, NY 1861



LS-L 1



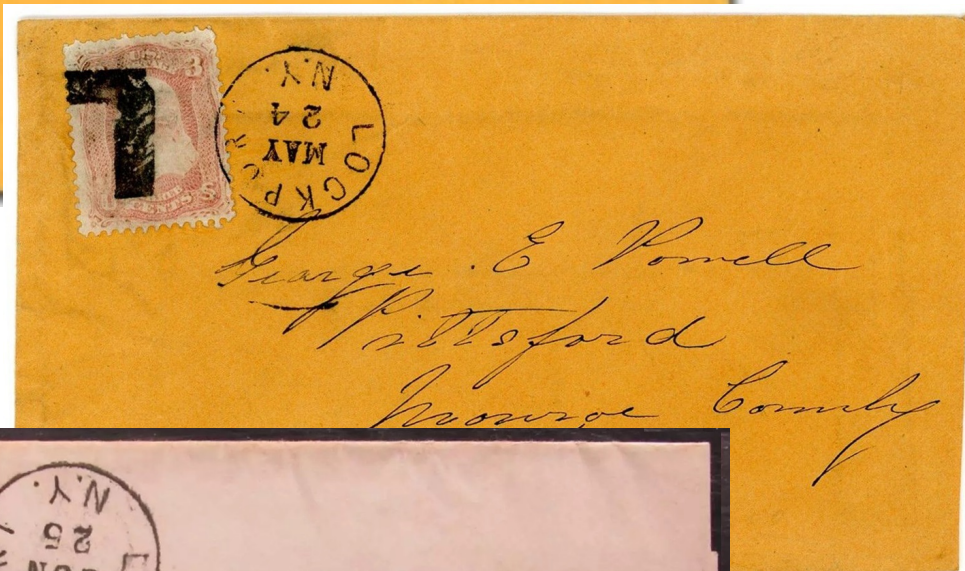
LS-L 1



LSL 1



LSL 1



LSL 1



LSL 1

Letters - Simple



LS-L 1



LS-L 1



"L" reversed

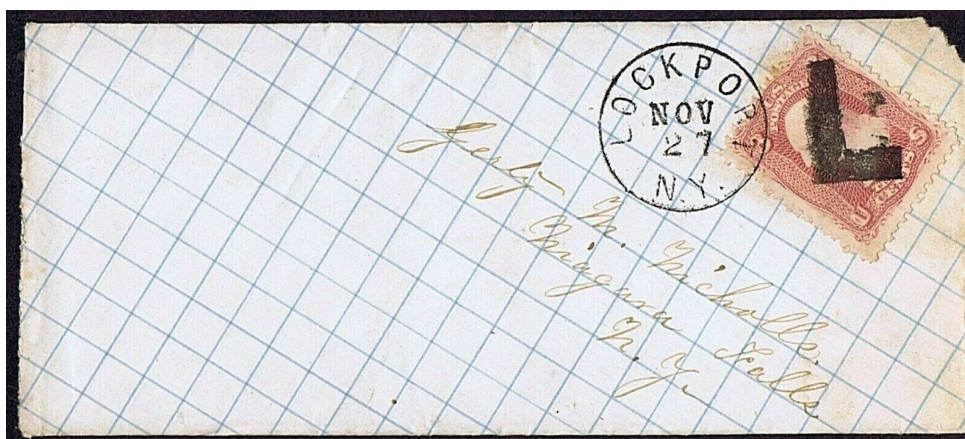
LS-L 1A
Lockport, NY 1861

Letters - Simple

L L



LS-L 2 [USCC 5961]
Lockport, NY 1861



LS-L 2



LS-L 2

Letters - Simple

L



LS-L 3
Lockport, NY 1861



LS-L 3A
1861

L



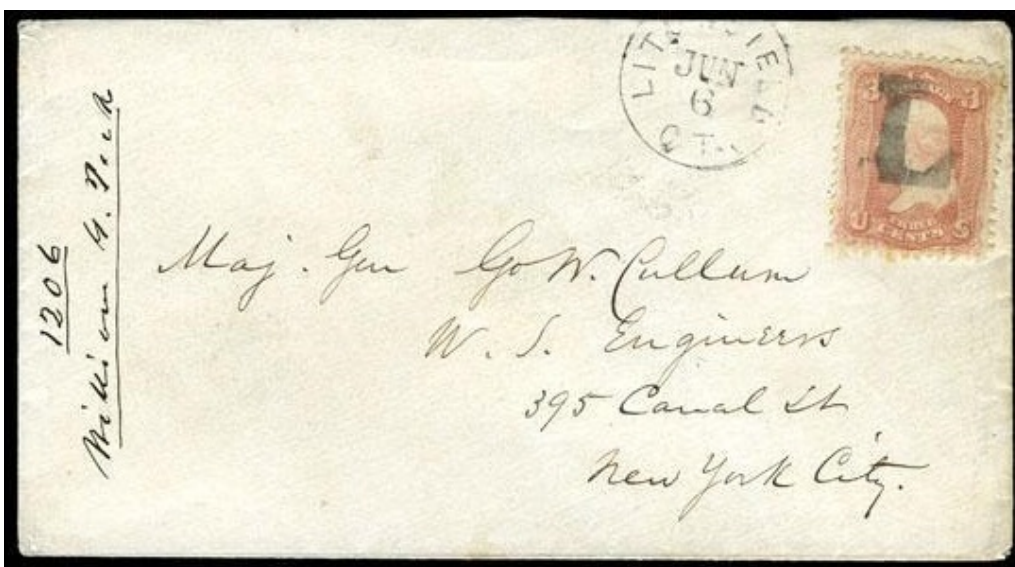
LS-L 4
Logansport, IN 1861

Letters - Simple

L L



LS-L 5 [USCC 5897]
Litchfield, CT 1861



LS-L 5



LS-L 5

Letters - Simple



9-T-1



LS-L 6 red
1861-66



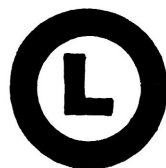
LS-L 7 blue
1867



LS-L 8 blue
South Deerfield, MA 1869



LS-L 9 [USCC 5899]
Alton, IL 1861



LS-L 10
Logansport, IN 1861



worn state

LS-L 11 [USCC 5913]
Brooklyn, NY 1861



LS-S 11



LS-L 11



LS-L 11A [USCC 5895]
1861



LS-L 12
Mifflintown, PA 1861



LS-L 12

Letters - Simple



updated March 14, 2026 (9:44am)