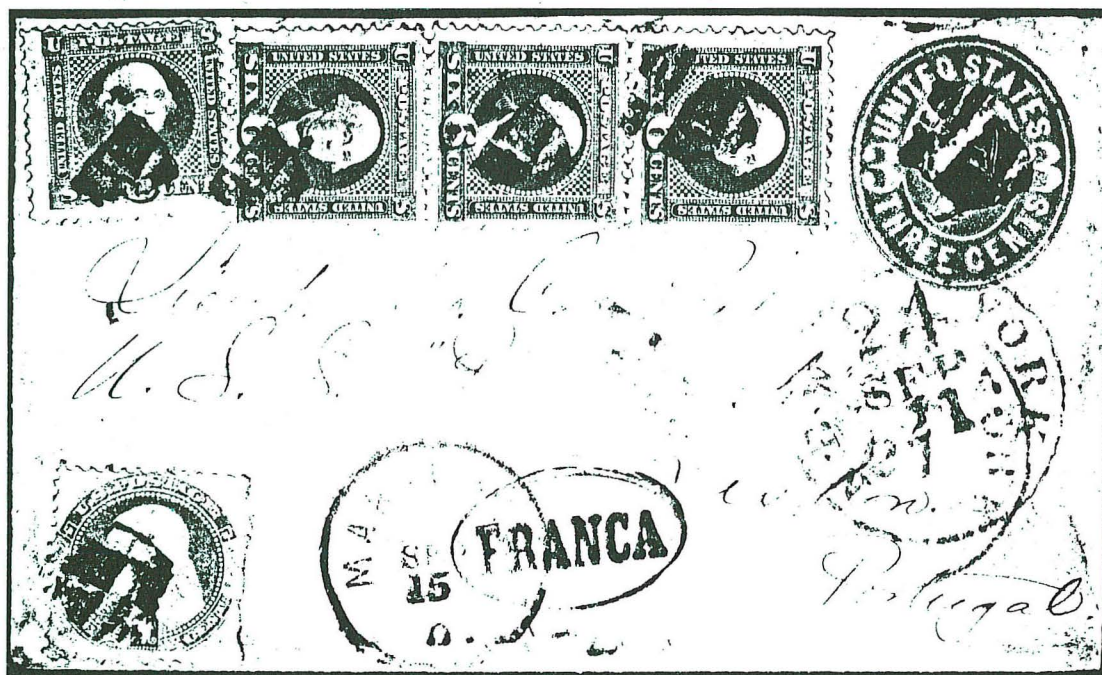


1869 Times

QUARTERLY JOURNAL OF THE U.S. 1869 PICTORIAL RESEARCH ASSOCIATES, INC.

May 1990
Price \$5.00

Whole No. 49
Vol. 13, No. 4



The U.S. 1869 Pictorial Research Associates

... dedicated to the advancement of knowledge through research and study of the 1869 issue.

1869 ISSUE

•
AS WELL AS ALL CLASSIC
UNITED STATES ISSUES
STAMPS AND COVERS
AVAILABLE
•

ROBERT A. SIEGEL, INC.

160 EAST 56th ST. - NEW YORK, NY 10022

Buying & Selling
QUALITY U.S.

44 Years Experience as a
Professional Philatelist
Specializing in Classic U.S.

Auction Agent and Consultant.

American Philatelic Brokerages
John Birkinbine II

7225 N. Oracle Road, Tucson, Arizona 85704

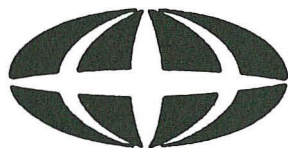
(602) 297-3456

WHEN SEEKING THE FINEST IN UNITED STATES PHILATELY:

- | | |
|------------------|--------------|
| ● UNUSED | ● REVENUES |
| ● USED | ● ESSAYS |
| ● STAMPLESS | ● PROOFS |
| ● POSTAL HISTORY | ● MULTIPLES |
| ● CLASSICS | ● AGENT WORK |
| ● BACK-OF-BOOK | ● LITERATURE |
| ● POSSESSIONS | ● INVESTMENT |

PHILIP T. BANSNER ALBERT F. CHANG WILLIAM T. CROWE

Send Your Name & Address For A Free Copy Of Our Net Price Catalog



**EMPIRE
GROUP**
INCORPORATED

*Box 2529
West Lawn, Pa. 19609
(215)678-5000*

1869 Times

Quarterly Journal of the
U.S. 1869 Pictorial Research Associates, Inc.

©Copyright 1990, All Rights Reserved
U.S. ISSN 0363-6542

Published by
The U.S. 1869 Pictorial
Research Associates, Inc.
30 Golf Road
Pleasanton, California 94566-9751
Membership in the 1869 P.R.A.
is available upon application.
Membership dues are \$20.00 per year



DIRECTORS

BRAD ARCH
144 Hamilton Avenue, Clifton, New Jersey 07011

THE REV. EDWARD BUSCH
4630 N. Wheeler, LaVerne, CA 91750

RICHARD CUTTS
1312 Elm Street, Georgetown, Texas 78626

JEFFREY M. FORSTER
10 Almaden Boulevard, Suite 1100, San Jose, CA 95113

KENNETH R. LAURENCE
Immediate Past President
13005 Keystone Terrace, North Miami, Florida 33181

JONATHAN W. ROSE
30 Golf Road, Pleasanton, California 94566-9751

RICHARD SEARING, Ph.D.
P.O. Box 1174, Yorba Linda, California 92686

REX H. (JIM) STEVER
First City Bank Trust FCB 16, Corpus Christi, TX 78477

WILLIAM M. WICKERT
3348 Clubhouse Road, Virginia Beach, Virginia 23452

SOCIETY OFFICERS

JEFFREY M. FORSTER
Chairman of the Board and President
10 Almaden Blvd., Suite 1100, San Jose, CA 95113

RICHARD SEARING, Ph.D.
Vice-President
Box 1174, Yorba Linda, CA 92686

WILLIAM M. WICKERT
Secretary-Treasurer
3348 Clubhouse Road, Virginia Beach, VA 23452

JONATHAN W. ROSE
Editor and Director
30 Golf Road, Pleasanton, CA 94566-9751

KENNETH R. LAURENCE
Immediate Past President and Director
13005 Keystone Terrace, North Miami, Florida 33181

MARGARET L. WUNSCH
Vice-President Emeritus & APS Representative
The Manor at Midvale, 6230 S. Commerce Ct., #1113, Tuscon, AZ 85746-6000

1869 TIMES

May 1990
Price \$5.00

Whole No. 49
Vol. 13, No. 4

EDITORIAL BOARD

Jon Rose, *Editor-In-Chief*
30 Golf Road
Pleasanton, California 94566-9751

CONTRIBUTING EDITORS

Richard M. Searing, Ph.D.
cover census coordinator

The Rev. Edward Busch, Ph.D.
Off-Cover Varieties

Rex H. (Jim) Stever
1869 Specialized Catalog

Brad Arch & Jon Rose
Auction News

PUBLICITY DIRECTOR

Richard Cutts
1312 Elm Street
Georgetown, Texas 78626

PUBLICATIONS SALES DIRECTOR

Brad Arch, 144 Hamilton Avenue
Clifton, New Jersey 07011

Address changes should be sent to the secretary-treasurer; back issue orders to the publications sales director; and other correspondence to the editor-in-chief. Reports of new 1869 items should be made to the editor-in-chief. Do not send stamps or covers unless requested to do so. Any items sent will be safeguarded, but no liability for loss or damage attaches to any editor or the 1869 Pictorial Research Associates, Inc.

FROM THE EDITOR'S DESK

The 1869 PRA, Inc. is seeking philatelic items for auction. Stamps, covers, proofs and essays are wanted, preferably 1869 material, with a market value of \$50 or more. These will be sold by a commercial stamp auctioneer. Proceeds will go to the non-profit 1869 PRA, Inc. Tax deductions are available for the realized net market value of the items donated. Material for auction should be sent to the Rev. Ed Busch, director, 1869 PRA Inc., 1751 Eaton Place, La Verne, CA, 91750.

The MIDAPHIL '90 stamp exhibition will be held Oct. 26-28, 1990, in Kansas City, Missouri. The 1869 PRA Board of Directors will hold a meeting there, tentatively set for 3 p.m. Friday, Oct. 26. Also, a slide show-seminar is tentatively scheduled for 10 a.m. Saturday, Oct. 27. And, the Collectors Club of Kansas City, Inc., the MIDAPHIL organizing group, is reserving 50 16-page frames for exhibits by 1869 PRA members. The frames will be held open until July 27. PRA members interested in exhibiting at MIDAPHIL may obtain a prospectus and hotel reservation card (Hyatt Regency) from PRA President Jeff Forster, whose address is on page one of this issue of the **1869 Times**. MIDAPHIL information is also available from Mike Schrampf, 705 New Orleans Court, Lee's Summit, MO 64063.

CONTENTS: Times #49, May, 1990

Page 2	From The Editor's Desk, On The Cover	The Editor
Pages 3-4	A Three Cent Color Variety	Jim Stever
Pages 6-14	1869 Cover Census: A Major Update	Edward E. Busch
Page 16	Last Look	The Editor

Advertisements: Robert A. Siegel, Inc.: American Philatelic Brokerages: Empire Group, all inside front cover; Jack E. Molesworth, Inc. (p.4); Christie's Robson Lowe, New York (p.5); Steve Ivy Philatelic Auctions (p.15); Jacques C. Schiff, Jr., Inc. (p.16); University Stamp Co. & Ventura Stamp Co., inside back cover. Raymond H. Weill Co., back cover.

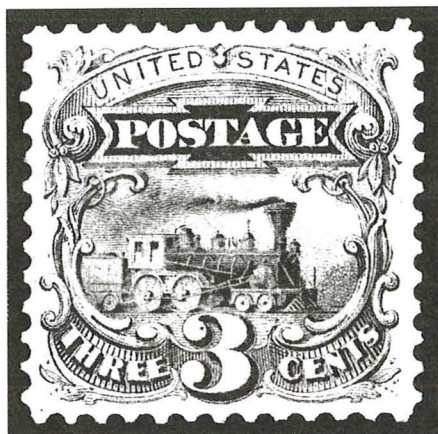


ON THE COVER

Four 6c 1869s (including a vertical strip of three) and a damaged 1c 1869 on a Scott U59 3c pink entire pay the 28c per half ounce Br. Mail rate 15 Sept. 1870 from Marion, Ohio, to Lisbon Portugal. Red NY "24" credit and "PD" in circle. Black "FRANCA" in oval. Lisbon receiving mark on reverse for Oct. 9 and red B.F. Stevens despatch oval for Oct. 22, 1870 (also on reverse) indicate letter was forwarded back to England, as naval officer addressee was not in Portugal. This cover was featured in Robert G. Kaufmann's "Patrick Henry" Collection sale, held Nov. 26-27, 1989 in Washington, D.C. It is one of several hundred additions to the 1869 cover census listings, the major update of which appears in this issue of the **1869 Times**.

A THREE CENT COLOR VARIETY

By Jim Stever PRA 29



While reading Calvet Hahn's study of quantities issued of 1869 stamps (See *Times* 47, November, 1989, pp.5-13), I was reminded of a stamp I acquired more than 15 years ago. In fact, it was one of my first three-cent locomotives.

A local stamp dealer died in 1974. He had more than 700 3c 1869s in stock. I had been thinking about starting a one-stamp collection, so I purchased those locomotives. I also bought several stock books--the type with black pages-- and began poring over my new "collection."

I was finding fancy cancels, color varieties, arrows, etc. Early on I noticed one stamp that, to use an old expression, "stuck out like a sore thumb." It was different from the other stamps on the page. I moved it to another page, and another and another. It was always a sore thumb. The reason it was so noticeable is that it was not an ultramarine stamp.

As you know there are many color gradations of the locomotive. There is the heavily-inked dark ultramarine, a light ultramarine, bright ultramarine, dull ultramarine, a grayish ultramarine, a "true blue" and a violet blue or violet ultramarine, with various intensities of each. But this stamp was Prussian blue. If you put it with a group of 15c 1869s--I don't own a whole page of 15s--it doesn't stand out, but instead blends with the vignettes of the other stamps. In short, the ink used to print the vignette of the 15c stamp was used to print this 3c stamp. There were originally at least 299 more of them. I have never seen another one.

The stamp is a fairly crisp printing, i.e., it was not printed from a worn plate; and thus is probably an early printing. This tallies with Hahn's study, which shows that the 15c stamps were printed in the first two quarters of 1869. Three cent stamps were also printed during this time period. Hahn estimates that

there were as many as eight presses available , with six of them being used to print 3c stamps. If so, one or both of the other presses could have been printing 15c stamps simultaneously with the 3c printings. Did one of the printers grab the wrong bottle of ink, and print a sheet or so before realizing his mistake? Or perhaps he finished a printing of 15c stamps, and was planning to return to printing 3c sheets, but forgot to change the ink. One could dream up other scenarios as to how an inadvertent or mistaken printing could occur. Perhaps it was done on purpose: After the final printing of 15c stamps, why not use up the vignette ink remaining to print 3c stamps? The public wouldn't recognize the difference ! And so on.

I doubt if we will ever discover how these 3c Prussian blue stamps were printed, but is fun to speculate. I would like to hear from anyone who owns or knows of other copies of this interesting color variety. Scott Trepel of Christie's New York has informed me that in the Weill holdings there are three copies of the 3c Prussian blue, and that both Roger and Raymond Weill had similarly concluded these 3c stamps were printed using the blue ink of the 15c vignette. It is quite possible that this "color error," if that is what it is, should be a catalog listing.

Editor's Note:In **Times 44**(November, 1988), Jim Stever listed the following shades for the 3c 1869: ultramarine, pale ultramarine, deep ultramarine, ultramarine blue, ultramarine gray, blue, Prussian blue and violet blue. Stever has exhibited widely his specialized collection of the 3c 1869. He is an acknowledged expert on this value. He will be assisting me in the preparation of the planned specialized handbook of the 1869 Issue and the 1875-1880 Re-issues.

OUR COMPREHENSIVE 1869 STOCK

***INCLUDES MANY ESSAYS (including rarer ones),
PROOFS, STAMPS (all values unused and used),
AND COVERS.***

WHAT DO YOU NEED?

SELECTIONS GLADLY SENT ON APPROVAL AGAINST SPECIFIC REQUESTS.

MAY WE HEAR FROM YOU ?

Satisfaction or Immediate Refund — Gladly Sent on Approval with References
Installment Payment Terms if Desired — (No Interest or Carrying Charges)

JACK E. MOLESWORTH, INC.

APS
SPA

88 BEACON ST., BOSTON, MASS. 02108
(617) 523-2522

CSA
USPCS

United States Stamps and Covers,
Including The Weill Brothers' Stock,
June 11-12, 1990

The Robert A. Paliafito Collection of
1861-68 Thirty-Cent Issues on Cover,
June 12, 1990



The Paliafito International Large Gold Medal collection includes almost 200 covers franked with the 1861-68 Thirty-Cent issues. Many extremely rare or unique usages are featured including the 1869 mixed issue usages illustrated here.

The U.S. Stamps and Covers sale will include a number of high quality classic single stamps, a section of 3c 1869, a substantial back-of-the-book section including Special Delivery, Newspaper, Official, Postage Due and Revenue issues. The cover section features several rare foreign destination usages including a mixed issue usage with 1c 1857 and 3c 1869 to India.

The two catalogues will be available in May. To order catalogues, please send check or money order for \$10.00 each to Christie's Stamp Department, or call for subscription information.



502 Park Avenue
New York, N.Y. 10022
Telephone: (212) 546-1087

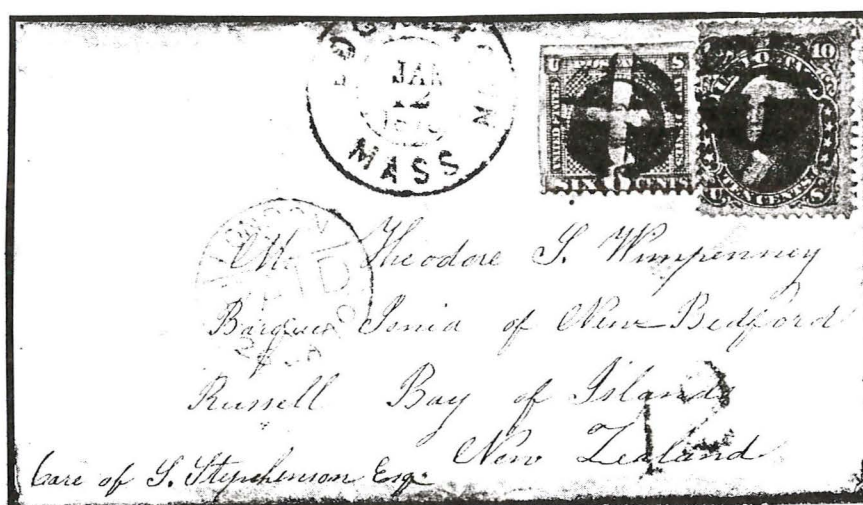
CHRISTIE'S
ROBSON LOWE

8 King Street, St. James's
London, SW1Y 6QT
Telephone: (01) 839-4034

1869 COVER CENSUS A MAJOR UPDATE

By the Rev. Edward E. Busch PRA 262

Editor's Note: Since the release in May, 1986, of **The 1869 Issue on Cover: A Census and Analysis**, by Jon Rose, your editor, and Richard Searing, Ph.D., no thorough update of additions to the listings has been attempted until now. What follows are the results of a survey of auction and other sales during the past four years by the Rev. Edward Busch. He has discovered almost 200 additions to the original cover lists. These include: 6c, 28; 10c, 80; 12c, 26; 15c Type I, 14 (1 questionable); 15c Type II, 39; 24c, three; 30c, one (doubtful); mixed frankings, three; and re-issues, three. The additions increase the book listings by about 7.4 per cent. But the hunt is not finished. Any reader who knows of covers not listed here or in the 1986 cover book should send details to me at the **1869 Times**. My thanks to Ed Busch for his yeoman efforts.



6c Combination to New Zealand — A 6c 1869 and 10c F grill (Sc. 96) pay 16c Br. mail rate via Southampton to New Zealand from Edgartown, MA, 12 Jan. 1870.

1869 SIX CENT COVER LISTING BY DATE OF USAGE

Origin/Destination	Date	Stamps Used	Description/Remarks	Source
Detroit/ Ontario, Can	07/12/69	115	Dbl line CDS	Fraj 43/2316
Ogdensburg, NY/??, Can, West	08/25/69	115	CDS, bksts, s.e.R	Chr 12/14/89/248
Baltimore, MD/Rotterdam, Hol	11/02/69	115	Rd CDS, bxd ShPd, ms 40	Kauf 62/1067
Nashville, TN/St. Graub, Swz	11/27/69	115:120	Cds, RdNYPdAll via Eng & Ost, 11/30 bkstp.	Fraj 42/1081

1869 SIX CENT COVER LISTING BY DATE OF USAGE

Origin/Destination	Date	Stamps Used	Description/Remarks	Source
Boston, MA/Economy, NSc	11/29/69	115	CDS, "Per Steamer, via SIn, NB"	Empire Group
Edgartown, MA/Rsl Bay, NZ	01/12/70	96:115	Dbl line CDS, RdLnPd, bkstps, 115 perfs clipped	ChrRLNY60/1972
Cambridge, MA/??, GB	01/28/70	115	CDS, RdBosPd All, 12/29, Rd BFStevens Dtsp	Kauf 58/613
NY/NY/Nice, France	02/17/70	113-2:115	RdNYx3/3, FrPkt, "8" due, pix 712, sm faults from opening	Kauf 62/710
Wash, DC/USS Richmond	04/07/70	115	CDS, Rd BF Stevens, London, 4/19, NYTr, s.e.lf	Fox 187/775
NY, NY/??, GB	04/??/70	115	RdNY CDS (x?)	ChrRLNY60/1969
Mobile, AL/Strasburg, Fr	06/15/70	115:145:U58	CDS, RdNYx6/21, "16" due, Cher trns.	Fraj Net#2/12
Los Ang, CA/London, Eng	07/05/70	115	CDS, Mag SF Pd	ChrRLNY60/1970
Lewiston, NY/N. Pelham, Can	08/25/70	115	BlCDS, bkstps	Weiss 11/7/87/1410
Ripley, O/London, Eng	08/29/70	115	CDS, RdNYCDS, Rd BF Stevens Dtstp	Mills Philatelic
Marion, O/Lisbon, Port	09/15/70	112:115-4:U59	CDS, RdNY Exch. Mk, BxPD FRANCA, Rd. BF Stv Rev, one #115 torn	Kauf 62/1376
Williamsburgh, NY/Darmstadt, Ger	12/07/70	112:115	CDS, RdNYPAD 12/10, Dir Rt, BREM box, 12/25	Ed Busch
??, ??/Rotterdam, Holland	??/??/70	115	bxShPd, Insuf Pd, "15" due, "per Str from NY," bkst	Siegel 689/876
Knights Ferry, CA/Prsbor, NS	06/16/71	115	CDS, Ms	Empire Group
Petaluma, CA/Locarno, Swtz	01/??/72	115:146-2	faint CDS, RdNYPdAll, 1/10, bkstp	Fraj Net#2/11
??, ??/Phila, PA	07/22/75	115:145-2:3c U??	ms RegNO3, Cains, "+ date, pen cncl	Fraj Net#2/13
Mobile, AL/Bettut? Sta, O	01/22/??	115-3:U??	CDS	Vent Net 2 3/90/524
Worcester, MA/Quebec, Can	02/10/??	115	CDS, Ill Mow Mach cvr	Siegel 689/877
Boston, MA/Rome, Italy	03/10/??	113:115-3	CDS, NYPABRTR, dbl rt	Schf 12/1/89/4079
NY, NY/??, GB	03/??/??	115	RdNYx, mourning cvr	Kauf 57/821
Jeff City, MO/St. Louis, MO	04/15/??	114:115	CDS, triple rate	Ed Busch
NY, NY/Oneonta, NY	04/??/??	115	CDS, all over Ill Sci Amer Patent Ag	Siegel 704/1341
??/PA/??/GB	10/??/7?	115	CDS, Viol Phil Pd All s.e.rt, mourning cover	Kauf 58/612
NY, NY/Phila, PA	??/??/??	115:117	Cir NY Reg E	Schiff 12/1/89/4088

1869 TEN CENT COVER LISTING BY DATE OF USAGE

Newport, RI/Berlin, Ger	05/04/69	116	CDS, NYPAD, BREMBOX, 5/18, dir rate, via Donau, bkstps	Kauf 62/960
NY, NY/Acapulco, Mexico	05/11/69	116	CDS, "per Alaska"	Kauf 62/1305
??/Acapulco, Mexico	06/01/69	116-2	direct rate, "per Arizona"	Kauf 62/1306
San Buenvent, CA/Bremen, Ger	06/04/69	116	CDS, RdNYPAD6/16, dir rt, bkstp, pix 961	Kauf 62/962

1869 TEN CENT COVER LISTING BY DATE OF USAGE

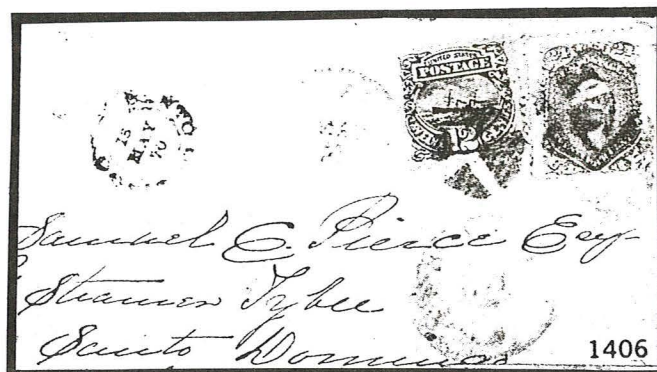
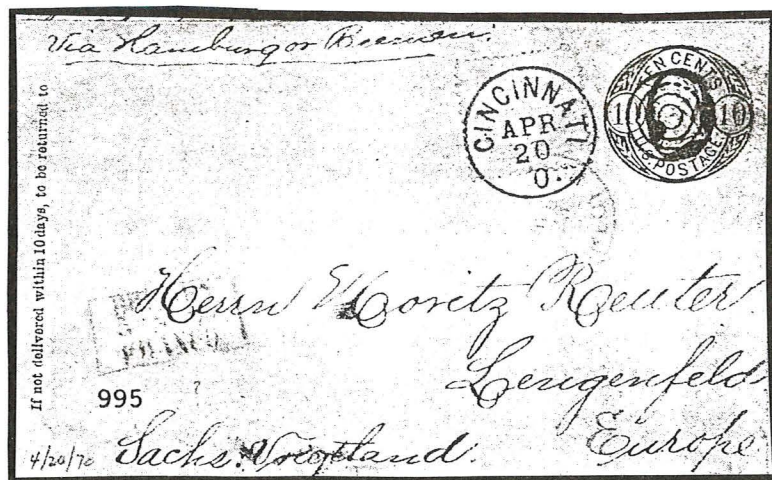


34c to Peru — 10c & 24c 1869s pay 34c rate to Lima, Peru, on Davis cover sent September, 1869. Panama transit. Red "24" (Br. Credit) ties 10c.

Origin/Destination	Date	Stamps Used	Description/Remarks	Source
NY,NY/Santiago, Cuba	06/24/69	116	CDS,NAL, "per Eagle"	Kauf 62/278
NY,NY/San Jose,Guatemala	07/01/69	116	CDS, BR Arrow	Kauf 62/1033
Newark,NJ/Osnabruck, Ger	07/28/69	116	CDS, Rd NYPBTr, Rd BREMBOX, dir rt, bkstp	Kauf 62/964
Cold Springs,NY/Paris,Fr	07/30/69	113:114:116	CDS, Rd&Blk NY18Ex Mks.,7/31, "16" due, Bl Cal Tr	Kauf 62/690
NY,NY/Acapulco,Mexico	08/11/69	116-2	CDS, "per Alaska," dir rate	Kauf 62/1307
NY,NY/Frankenthal,Ger	09/07/69	116	RDNYPAD, Rd HAMBOX, bkstp	Kauf 62/967
Phila,PA/Stuttgart,Ger	09/20/69	116	Viol PhilPAD, Rd HAM-BOX,dir rt, rec & fwd mks. rev	Kauf 62/969
NY,NY/Merghausen,Ger	09/21/69	116	RdNYPAD, Rd HAMBOX, bkstps "per Allemania"	Kauf 62/971
Port Chester,NY/Lima, Peru	09/??/69	116:120	early Davis, Rd 24, PanTr 9/24, 10/1/69 docketing	Siegel 708/222
Shanghai,Ch/Tuthill Tn/NY	10/13/69	116	US Con Gen 10/13, SF 11/18, "via Pac RR," cov tear	Kauf 62/250
Binghamton,NY/Aspinwall,NG	10/29/69	116	CDS, to USS Seminole J. Rose Paymaster, dir rate	
NY,NY/Bremen,Ger	11/04/69	116	RdNYPAD, "via Rhein" dir rate, bkstps	Kauf 62/973
NY,NY/Ettenheim,Ger	11/30/69	116	RdNYPAD, RdHAMBOX, dir rt,"via NGerUnion," bkstp	Kauf 62/978

1869 TEN CENT COVER LISTING BY DATE OF USAGE

Origin/Destination	Date	Stamps Used	Description/Remarks	Source
NY,NY/Acapulco,Mexico	12/12/69	116	CDS,"per Alaska,"dir Kauf	62/1308
New Orleans,LA/Havre,Fr	12/21/69	116	rt Blk NYExchMk24, "16" Kauf	62/698
Boston,MA/Dresden,Ger	12/31/69	116	due, blue Cher trns RdBosPAD, RdHAMBOX, Kauf	62/979
New Orleans,LA/Havre,Fr	01/06/70	116	dir rt, bkstp, prfs trmd top CDS, RdNYxl/8,10,Cal Manng	12/12/89/1183
NY,NY/Paris,France	01/08/70	116	Trns, bkstps RdNYx, "8" due,Blk Kauf	62/700
NY,NY/Hannover,Ger	01/08/70	116	Fr.Pkt, ShPd, rev (Munroe Co.), dir rt RdNYPAD, RdBREMBOX, D. Tocher	
Elizabeth,NJ/Paris,France	01/10/70	116	"pr Stmr via Bremen" CDS, RdNYx, Chr Tr, Schiff	12/1/89/4081
San Fran,CA/Locarno,Switz	01/14/70	114-2:116	"8" due,ShPd, rev (Munroe Co), mourning cover CDS, Red NYPA Br.TR Kauf	62/1579
Cold Springs,NY/Paris,Fr	01/17/70	116	CDS, RdNYx, "5" due, Kauf	62/702
Bloomington,Ill/Mainz,Ger	01/22/70	116	BlkCalTr,GB40, open mail via Eng, 6c overpay CDS, RdNYx,dir rt, Kauf	62/991
Phila,PA/Paris,France	01/24/70	116	bkstp BlCherTr, "8" due, Kauf	62/704
NY,NY/Terminos,Mexico	02/02/70	116	mourn cvr,rev: Phila CDS ShPd (Munroe) CDS, 2, via Sisal, Kauf	62/1310
Southampton,NY/??,Chile	02/03/70	116:117	"per Cleopatra," dir rt CDS, RdNYl2 Exch Mk Kauf	62/127
Hoboken,NJ/Bremen,Ger	02/08/70	116	CDS, RdNYPAD2/8, all Kauf	62/989
New Hampton,IA/Toronto,Can	02/09/70	113:116	over hotel Illus. cvr CDS, both stms st eg Ventura Net	2-3/90/ L-512
Geneseo,Ill/Tenaz,Switz	02/11/70	113:116	CDS, BlkNYBrTr,Insuf Kauf	62/1580
Elizabeth,NJ/Paris, France	02/14/70	116	Pd, ms 15&35,3c underpy 15c ClM Rt,"via Ost," bkstps CDS, RdNYx2/15, "8" Kauf	62/708
San Fr,CA/La Trameblade,Fr	02/15/70	116	due,BlChertr, ShPd (Munroe) ladies cvr, dkt.Rome rec CDS,RdNYx,"5" due, Vent Net	2-3/90/526
San Fran,CA/Bordeaux,Fr	02/17/70	116	GB40, Fr tr,"Overland Mail" CDS,RdNYx,"8"due,Bl Kauf	62/709
DWI/Phila,PA	02/21/70	116	Cher trns org DWI,NYStShP,St. Kauf	62/1404
Louisville,Ky/Paris,France	02/23/70	116	Thom.merch hdst CDS,RdNYx's3/5, "8" Kauf	62/712
Phila,PA/Berlin,Ger	02/25/70	116-2	due,RdFrPk.ShPd rev (Munroe),pix	710
NY,NY/Grobitz, Ger	02/26/70	116	Viol Phil Pd, Rd Kauf	62/990
Louisville,Ky/Stuttgart,Ger	03/08/70	116	BREMBOX, ms2, dir rt, bksts RdBREMBOX ties,NY tr Ivy	3/13/87/L-444
			CDS, RdNYx,BREMBOX, Kauf	62/991
			bkstp	



Double Rates — Left: 10c 1869 & 10c embossed (U40) pay double 10c NGPU direct rate, 20 Apr. 1870, Cincinnati to Saxony. Right: Double 18c Br. packet rate, NYC to Santo Domingo, Dominican Republic, via St. Thomas or Havana, May, 1870. Paid by 12c 1869 & 24c F grill Washington.

1869 TEN CENT COVER LISTING BY DATE OF USAGE

Origin/Destination	Date	Stamps Used	Description/Remarks	Source
NY, NY/Pesth, Hungary	03/08/70	116	RdNYPAD, RdHAMBOX, cor Kauf 62/1074 cd, "Via Holsatia"	
New Orleans, LA/Paris	03/13/70	116	CDS, RdNYExchMk, "16" Kauf 62/714 due, Bl Merch Pd, Fr Tr rev	
Greencastle, PA/Berlin, Ger	03/14/70	116-2	CDS, RdNYPAD, RdHAMBOX, Kauf 62/992 dbl dir rt, bkstps	
Industry, Tex/Oldenburg, Ger	03/27/70	116	CDS, RdNYPABrTr, 5c Kauf 62/994 underpay, clsd ml rt?, bkstp	
Greencastle, PA/Berlin, Ger	03/28/70	116	CDS, RdNYPAD, RdHAMBOX ChrRL 60/1976 "5" due, fwd to Paris	
Pittsburgh, PA/Paris, France	04/03/70	116	CDS, RdNYx, "16" due, Kauf 62/717 BlCherTr 4/25	
NY, NY/Bordeaux, France	04/12/70	116:Fr20c	RdNYx ties Fr. stmp, Kauf 62/718 front, Bl CalCDS, merch, "via Cherb"	
NY, NY/Paris, France	04/16/70	116	RdNYx's, BlkFrPkt, "8" Kauf 62/720 due, ShPd rev (Munroe Co)	
Watertown, Ma/Paris, France	04/18/70	116	CDS, NYTr, FrTr, "8" Kelleh 579/582 due, prtd "per stmr"	
Cincin, O/Lengenfeld, Ger	04/20/70	116:U40	BlCDS, RdNYPAD, RdBREM Kauf 62/995 BOX, dbl dir rt, blstp	
Watertown, Ma/Paris, France	04/22/70	116	CDS, BostCDS, FrTr, "5" Fox 187/776 due, BG40	
Ny, NY/Mexico City, Mex	04/26/70	116-3	CDS, "8" due, "Stmr Kauf 62/1311 Winchstr," Bl Merch 4/26	
NY, NY/Paris, France	04/30/70	116	RdNYx, "8" due, RdFrPkt Kauf 62/722	
New Orleans, LA/Paris, Fr	05/10/70	114-2:116	CDS, NYx, "25" due, Blk Kauf 62/725 CalTr, GB40, bkstp	

1869 TEN CENT COVER LISTING BY DATE OF USAGE

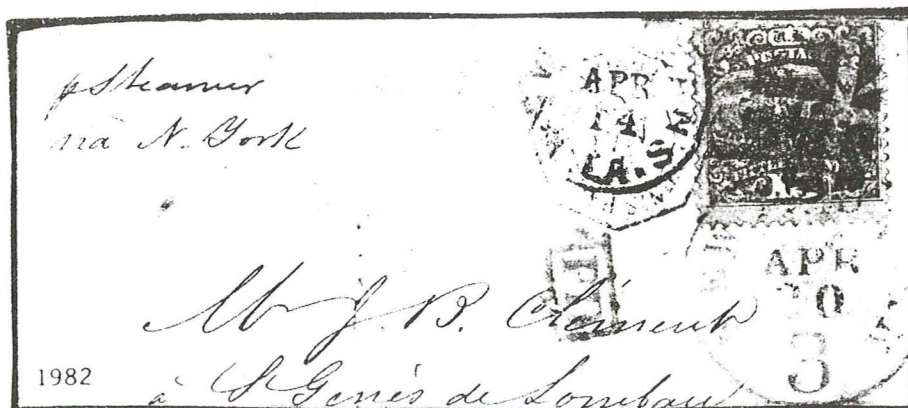
Origin/Destination	Date	Stamps Used	Description/Remarks	Source
Philadel,PA/London,Eng	05/17/70	116	CDS,GB40, meant for dirML,sent dir rt,6c over "5" due, bkstp	Kauf 62/726
Hutchison,MN/Hirschberg,Gm	05/18/70	116	CDS,EdChPAD,RdHAMBOX, "via per Cl ML"	Kauf 62/996
Boston,MA(?)/Dresden,Ger	05/30/70	116	RdBosPAD, RdHAMBOX,emb MerchCC, dir rt, bkstp	Kauf 62/997
Cincin,O/Gottenburg,Swd	05/31/70	116:146-2	BlCDS, Rd4, RdHAMBOX 6/2, Rd Wf 1½	Kauf 62/1471
St.Louis,MO/Vienna,Austria	05/??/70	116-2	NYPAD, CDS, HAMBOX, dbl dir rt, bkstp	Kauf 62/57
New Orleans,LA/Paris,Fr	06/01/70	116	CDS, RdNYx, defects	Kauf 62/728
Cincin,O/Osnabruck,Ger	06/04/70	116	BlCDS, RdNYPAD6/6, HAMBOX,dir rt, bkstp	Kauf 62/998
Newport,RI/Paris,France	06/22/70	116	CDS, RdNYx6/25, RdPaid 10inCir, "8" due, Blk FrPkt	Kauf 62/731
Newport,RI/Paris,France	06/28/70	116	CDS, RdLonPD7/13, Pdin crcl, "6" due, Cal Tr	Kauf 62/732
New Orleans,LA/Paris,Fr	07/10/70	116	CDS, RdNYPABrTr7/14,Rd LonPd7/25, Cal Tr, Rd6, RdcirPD, s.e.l.	Kauf 62/733
Omaha,Neb/Paris,France	09/12/70	114-2:116	CDS, "8" due, RdFrtrns ShPd rev (Munroe Co)	Ventura 2-3/90/522
NY,NY/Bordeaux,France	11/12/70	116	RdNYx11/12, Fr Pkt	Kauf 62/738
NY,NY/Bordeaux,France	11/26/70	116	RdNYx, "8" due, RdFr- Pkt, "Ville de Paris"	Kauf 62/739
Alma,Wis/Reischen,Switz	12/12?/70	116-2	CDS,RdNYPABrTr, ms2, dbl ClosRt	Kauf 62/1586
New Orleans,LA/??,Cuba	??/20/70	116	CDS,NAL, Merch	Siegel 689/898
Summit Hill,PA/??,Sweden	12/07/74	116	CDS,RdNYPAGerTr, 2/8 Karls rec 12/18, lc over Cl Rt, late usage	Kauf 62/1479
Watertown,MA/Paris,France	04/22/??	116	CDS,BostonCDS, "5" due Fr Pkt, GB40	Ventura 2-3/90/528
Baltimore,MD/Bremen,Ger	05/??/??	116	RdCDS,NYPAD5/17, Ital Paid All	Siegel 689/897
Troy,NY/Waterville,ME	05/30/??	116	CDS	Siegel 715/238
Stockton,ME/Valparso,Chile	10/04/??	116-2:146	CDS,RdNYExchMk	Kauf 62/130
NY,NY/Aspinwall,NG (Col)	12/??/??	116	RdNYx, to paymaster, USS Seminole	ChrRLNY60/1977
Greenvl,ME/Manchester,ME	??/??/??	116:146:147-2	CDS, regis.letter	Kauf 65/22
NY,NY/SaguaLaGrande,Cuba	??/??/??	116	faint CDS	Schiff 12/1/89/L-4080
??,PA/Fagerweilen,Switz	??/??/??	116	indistCDS,Insuf Pd,ms	Kauf 58/615
??,??/Phila,PA	??/??/??	116	NY STEAM	Kauf 57/824

1869 TWELVE CENT COVER LISTING BY DATE OF USAGE

NY,NY/London,Eng	04/10/69	117	RdNYPdAll, Rd Lond Pd Ill all over naut instrum	Kelleh 579/595
Phil,PA/Sherborne,GB	04/23/69	97:117	Vlt Phil PdAll,mourn cvr, bkstp	Kauf 62/386

1869 TWELVE CENT COVER LISTING BY DATE OF USAGE

Origin/Destination	Date	Stamps Used	Description/Remarks	Source
NY,NY/Dublin,Ireland	04/28/69	117	RdNYPa, mourning cvr, stpLft&Hgd	Kauf 62/1138
Cambridge,MA/Tilgate,GB	07/29/69	117	CDS, BosPd,Crawley,GB rec mk	ChrRL60/1978
NY,NY/Dublin,Ireland	08/07/69	117	RdNYPdAll	Post Hist Inter
NY,NY/London, Eng	08/07/69	117	RdNYPdAll,LondPd 8/18	D.Tocher
Phila,PA/Sheffield,Eng	08/11/69	117	ViolPhilPAll, RdLonPd	Fox 187/777
Wash,DC/Paris,France	10/15/69	114:117:118	(Not 119 as in census, NYPd24, Rd Pd, 2 x 15 rt	R.W. Cutts
Greencastle,PA/Berlin,Ger	11/08/69	98:114:117	CDS,RdNYPABrTr, red Verv Coln trns	Kauf 62/974
Highland,IL/Wildegg,Switz	12/16/69	114:117	CDS, RdNYPABrTr, per Sw(cl)ml, bkstps	Kauf 62/1576
NY,NY/Rome,Italy	12/21/69	113:117	RdNYPAD, RdHAMBOX, Pur PD, Rd4, dir ml rt, 1½ Wf	Kauf 62/1244
NY,NY/Bathcornwell,Ire	01/10/70	117	Red NYx	Empire Group
NY,NY/Rome,Italy	01/15/70	117	RdNYx, GB40, CalTr,10c del, 1.20 (lira,cent), spec. rate	Kauf 62/1246
Southampton,NY/??,Chile	02/03/70?	116:117	CDS, RdNY12, Exch Mk	Kauf 62/127
??,VA/Adelaide,S. Austrlia	02/26/70	114:117-3	CDS, RdLonPd, rec, mourn front,mult Rd 20s	Kauf 62/37
NY,NY/Stockholm,Sweden	03/14/70	113:117	BlMerchCDS, RdHAMBOX, Rd4, dir rt, "perSilesia SS"	Kauf 62/1470
??,??/Santo Domingo,Dom Rp	05/??/70	99:117	indistCDS,Red NYTr, SD Rec 5/15/70, #99 flty, dbl l8c Br. pkt	Kauf 62/1406
New Orl,LA/Barcelona,Spain	06/22/70	112:117:119	CDS,RdNYPABrTr 6/28 rev,RdPd,Rd24,Rd Lon Pd 7/9, "byWyofEng," Br.Pkt Rt	Kauf 62/1459
NY,NY/London,Eng	08/24/70	117	RdNY US, RdLonPd, merch, "Str Nev," SupMlrt,F5?	Weiss 11/7/87/1412
??/Yokohama,Japan	07/03/71	117	faint CDS, ladies cov	Kauf 62/1270
NY,NY/??,Scotland	03/??/??	117	RdNYPdALL, box"postage prpd by D.S.&Co., "per Str.Siberia," se	Kauf 57/826
NY,NY/Scotland	07/??/??	117-2	RdNYPdAll	Kauf 57/825
Munsville,NY/Troy,NH	11/11/??	117:148	CDS, regis rate	Kelleh 579/594
E NY/NY/??,VA	??/??/??	117:156	CDS, reg domes	Schiff 12/1/89/408
NY,NY/Phila,PA	??/??/??	115:117	CirNY Reg E	Schiff 12/1/89/408
Goshen,NY/Middleton,NY	??/??/??	117-2	CDS	Ivy 5/19/86/L-1613



Early Use — 15c Type I, 14 April 1869, New Orleans, NYC, to France.3c credit to France, direct service.

1869 FIFTEEN CENT TYPE I COVER LISTING BY DATE OF USAGE

Origin/Destination	Date	Stamps Used	Description/Remarks	Source
New Orleans, LA/??, France	04/14/69	118	CDS, RdNY"3", RdBxdPd, Fr Tr	ChrRLNY60/1982
NY, NY/Paris, France	04/24/69	118	RdNY ExMk, bxPd, BlCalTr	Kauf 62/681
New Orleans, LA/Milano, It	05/28/69	118	CDS, RdNYPABrTr 6/1, merch, "per Steamer"	Chr 12/14/89/L-684
NY, NY/Paris, France	06/03/69	118	Rd & BlkNYExch Mks, "16" due, Pd, BlCalTr	Kauf 62/684
NY, NY/Worms, Germany	06/24/69	118	RedNYPABrTr, RdVer/Col T	Kauf 62/963
NY, NY/Monteaux, France	06/26/69	118	BlkNYExchMk, "16" due, Fr Pkt, Insuf Pd	Kauf 62/687
NY, NY/Zurich, Switz	08/??/69	118	RdNYPABrTr, bkstp	Ivy 3/13/87/460
Wash, DC/Paris, France	10/15/69	114:117:118	(not 119 as Census) NY- PD24, 2x15 rate	R.W. Cutts
NY, NY/Harpstedt, Ger	03/26/70	118	BlkNYDir, Insuf 13/4 Sgr, ms. 2, 3 3/4shr (9c) due	Kauf 62/993
NY, NY/Frankfurt, Ger	05/04/70	118	RdNYBrTr, Verv/Col Tr	D.B. Wood
New Orlns, LA/Angouleme, Fr	05/28/70	118	CDS, RdNYx, Bl "8" due, BlCherTr, mourning cvr	Kauf 62/727
Middlebrgh, MA/Constple, Tur	11/03/70	118	5 crd. NGU, Washburn cor	D.B. Wood
??/??	08/14/72	118	Blk Cal Tr, stp may not belong	Kauf 62/756
NY, NY/White Lake, NY	05/05/7?	118:147	NY Reg , Reg #1289	Fraj Net #2/18

1869 FIFTEEN CENT TYPE II COVER LISTING BY DATE OF USAGE

Orange, NJ/Berlin, Ger	05/09/69	119	CDS, RdNYBrTr, RdVer/ Coeln, pix 962	Kauf 62/961
NY, NY/Palermo, Italy	07/31/69	119	RdNYPBrTr	Kauf 62/1241
NY, NY/Paris, France	08/07/69	119	RdNYExchMk, bxdPd, Rd Fr Pkt	Kauf 62/691
NY, NY/??, France	08/18/69	119-2	RdNYPd "12," RdBxdPd, Bl Cal Tr, bkstps	Chr RL60/1986
NY, NY/Amsterdam, Holland	08/21/69	119	CMVEng, bkstp	D.B. Wood
NY, NY/Palermo, Italy	09/09/69	119	RdNYPABrTr, "per Hansa"	Siegel 704/1378
Johnstown, PA/Rottenbrg, Ger	09/20/69	119	CDS, RdNYBrTr, rec mks	Kauf 62/970
NY, NY/Chiavari, Italy	10/23/69	119	RdNYPABrTr	Kauf 62/1242
NY, NY/Termini, Italy	11/06/69	119	RdNYPABrTr	Kauf 62/1243
NY, NY/Palermo, Italy	12/02/69	119	RdNYPABrTr	Fox 187/778
NY, NY/Paris, France	12/25/69	119-2	RdNYPd"36" RdBxdPD, Rd Oct, Fr Pkt	ChrRLNY60/1987
Wash, DC/ChauxdeFond, Switz	01/12/70	119	CDS, RdNYx, GB40, 5 del F27, ms70, CalTr, RedLonPd, Pd only to Eng	Kauf 62/1578
PtChester, NY/Lima, Peru	02/04/70	112:119-2	CDS, RdNYx, 4x34c rt, may have had 7 other 119s, a lovely "ruin"	Kauf 62/1348
Wilmington, NC/Rome, Italy	02/09/70	119	RdNYPAD, RdBREMBX, PurPD	Kauf 62/1245
NY, NY/Marseilles, France	03/15/70	119	CDS, Rd 4, 1½ Wfr, pix	1247
NY, NY/Brussels, Belgium	03/19/70	119	RdNYExchMk	Kauf 62/715
NY, NY/Florence, Italy	03/30/70	119	Rd & Blk CDS, NYPABrTr, merch CDS	Kauf 62/77
Cooperstwn, WI/Basel, Switz	04/01/70	119	NYPABrTr, bkstps	E. Busch
			CDS, NYPABrTr, bkstp	Cherryst 2/18/87/L-2391

1869 FIFTEEN CENT TYPE II COVER LISTING BY DATE OF USAGE

Origin/Destination	Date	Stamps Used	Description/Remarks	Source
Ilion,NY/Schaft-Hasli,Swz	04/04/70	119-2	CDS, RdNYPABrTr, ms2	Kauf 62/1581
New Orls,LA/Bordeaux,Fr	04/10/70	119	CDS, cvr bnd affects stp	Kauf 62/719
Kirkwood,MO/??,Ger	04/27/70	119	RdNYPABrTr 4/30,Rd VerCo	ChrRL60/1984
Baltimore,MD/Palermo,It	05/06/70	114-2:119	RdCDS, RdNYPABrTr,Milan	Kauf 62/1247
FntnCity,WI/St.Gallen,Swz	05/26/70	119-2	CDS, RdNYPABrTr,10c ovp	Kauf 62/1582
New Orleans,LA/Paris,Fr	06/09/70	119-2	CDS,RdNYx,"32" due,CherT	Kauf 62/730
New OrL,LA/Barcelona,Sp	06/22/70	112:117:119	CDS, RdNYPABrTr 6/24 rev	Kauf 62/1459
			RdPd/24, RdLonPd 7/9,"byWyofEng"	
Lafayette,IN/Schl-Vpch,Swz	06/27/70	119	CDS, RdNYPAD,RdBRMBOX,	Kauf 62/1000
			5c ovpt Dir Ml rate	
Saratog Sprgs,NY/Paris,Fr	07/23/70	119	CDS,RdNYx8/6,"8"due,FrPk	Kauf 62/734
Pt Chester,NY/Lima,Peru	08/11/70	113-2:119:147	CDS, RdNY12ExchMk8/20	Fraj Net#2/21
			Davis corresp.,bkstp	
??,Iowa/??,Norway	11/17/70	119	faulty rebaced front	Kauf 62/1327
Phila,PA/St. Croix,DWI	12/15/70	114:119	CDS,StThTr,Rd8, ms4,bkst	Kauf 62/1397
??,??/??,Switzerland	??/??/70	119	indist CDS,dock "3/3/70"	Siegel 715/251
Daupne,PA/Pont-de-Roide,Fr	07/18/72	119	CDS, RdNY7/24ExchMk6,	Kauf 62/755
			RdPd, FrTr,RdLonPd 8/7, 6c underpay	
Petluma,CA/Cavigliano,Swz	03/12/73	119:147	CDS,RdNYReg, bxdCHARGE	Kauf 62/1593
			10c Swz clMl+8c Reg, bkstps	
Wash,DC/Upperview,VT	02/10/??	114:119:U59	Wash Reg CDS	Empire Group
NY,NY/Florence,Italy	03/30/??	119	RdNYPABrTr	E. Busch
Panora,IA/Castalia,Iowa	04/??/??	114:119	CDS, 3c+15c reg rt, ms4	Manning 12/12/89,
				L-1192
Smithburg,MD/Alfred,ME	10/25/??	119:147	CDS, reg letter	Vent Net2-3/90/5
Middlebrgh,MA/Constan,Tur	??/28/??	119	CDS,RdNY5Exch,bkst Aust	Ivy 3/13/87/465
NY,NY/Florence,Italy	??/??/??	119	RdNYExchMk, fwd to Pisa	Schiff 12/1/89/
				L-4089

1869 TWENTY-FOUR CENT COVER LISTING BY DATE OF USAGE

Port Chester,NY/Lima,Peru	09/??/69	116:120	Rd24,PanTr 9/24,10/1/69	Siegel 708/222
			docket, early Davis cvr	
Nashville,TN/St.Graub,Swz	11/27/69	115:120	CDS,NYPdAll, via Eng&Ost	Fraj 42/1081
			may be orig list 11/22 dep	
??,??/Salem,IL	??/??/??	114-2:120	indist CDS, lrg Cths cvr	Schiff 12/1/89
				L-4094

1869 THIRTY CENT COVER LISTING BY DATE OF USAGE

Fernandina,FL/Shngi,China	05/15/70	121	CDS, ms endrs, PF says	Kauf 62/252
			30c "not used on cover"	

1875 & 1880 RE-ISSUE COVERS LISTED BY DATE OF USAGE

NY,NY/San Jose,CA	02/18/18	123:UX3	CDS Duplx,cor War rate	E. Busch
Baltimore,MD/Norwich,CT	07/03/??	133-2	CDS dplx,Stmp Dlr cor cd	Vent Net2-3/90/5
??/Modena,Italy	07/18/??	124	On pc wrp of stmp album	Kauf 62/1262

1869 MIXED FRANKING COVERS LISTED BY DATE OF USAGE

Toronto,Cn/Waterloo,IA	09/09/69	114:Can 27	fwd Nrk,NY,Can & US CDS	Vent Net2-3/90/5
Charleston,SC/Liverpl,Eng	09/23/69	96:114:GB51	CDS, fwdDresden,fwd mk	Ivy 5/19/86/1575
			10/7, RdLonPd, Lon duplex	
NY,NY/Bordeaux,France	04/12/70	116:Fr20c	RdNYx ties 20c,B1CherCDS	Kauf 62/718
			merch hstp, front only	



JOIN THE STAMP-EDE TO GETAWAY '90!

WIN AN
INVERTED
JENNY
AIRPOST!
(Estimated
Value: \$75,000)

WIN
\$2,000
IN CASH!
PLUS
Many More
Prizes!

Four Days of Fun
And Philately

**STEVE IVY
GETAWAY
'90**

May 25-28

Get the Stamps You Want with Your Winning Bid!

You're a winner at Steve Ivy's GETAWAY '90 Sale! Four days of fun and philately at the fabulous Four Seasons Resort in Dallas! Bring the family for an exciting Memorial Day Weekend (May 25-28) you won't forget - a philatelist's dream vacation of fun, prizes, and stamps, stamps, stamps!

- WIN AN INVERTED JENNY (Scott #C3a, estimated value: \$75,000) in the GETAWAY '90 Hole-In-One Challenge!
- WIN \$2,000 CASH when you solve the POSTAL PUZZLER and compete for prizes in the fun and funny PHILATELIC FOLLIES musical cabaret at the GETAWAY '90 Banquet!
- WIN MORE PRIZES when you MEET LPGA CHAMPION SANDRA HAYNIE and BEAT-THE-PRO!

**YOUR WINNING BIDS will get the stamps
you want at the prices you want to pay at our
\$1.5 MILLION STAMP SALE!**

The GETAWAY '90 Sale is filled with hundreds of lots of desirable, high-quality United States stamps, many accompanied by Philatelic Foundation Certificates!



Choose from hundreds of our now-famous collections and large lots in both U.S. and foreign areas. No "left-overs" here! This is fresh material, much of it from large estates left virtually intact. Estimated values range from \$1,000, \$5,000, \$10,000, \$20,000, and more - something for every taste and budget! Dealers and collectors of foreign countries (especially in the German area) will be amazed by the global scope of this sale!

Experience the GETAWAY '90 Sale for Yourself, and Enjoy the Pampered Pleasures of a World- Class Resort Hotel!

Play golf, tennis, racquetball, squash! Swim in the outdoor and indoor pools. Take part in aerobics and personal weight training at the Fitness Center. Indulge yourself with massages, herbal wraps, aromatherapy baths, and aesthetics services at the Four Seasons Spa. Take shopping tours of Dallas fashion centers. The Four Seasons Resort and Hotel is a vacation in itself!

Can't Make It to GETAWAY '90? You Can Still Bid on the Stamps You Want by Mail, FAX, and Phone!

We hope you can come for all the exciting events of GETAWAY '90. But if you can't attend in person, you can still bid on the stamps you want right from our GETAWAY

'90 Sale catalog. Detailed photography and accurate philatelic descriptions make it easy for you to place your bids by mail, FAX, and phone. Use the bid sheet enclosed with every catalog to name your prices on the stamps you want. If yours is the high bid on any lot, we act as your agent on the bidding floor. YOU NEVER PAY MORE than your bid on any stamp, and YOU COULD PAY LESS!

**Register for GETAWAY '90 and
Get Your Sale Catalog Today! Call NOW:
1-800-STAMPS-1 (782-6771)**

**Or Complete The Coupon Below:
(MAY 25-28)**

- ☐ **YES!** Please send me a copy of Steve Ivy's GETAWAY '90 auction catalog. Enclosed is a check or money order for \$7.00 a copy.
- ☐ I want a FREE one-year subscription to your full-color auction catalogs, including the Steve Ivy GETAWAY '90 Sale catalog. Enclosed is a single invoice showing a purchase of \$250 or more from another stamp company, or a check or money order for \$20.00.
- ☐ Please send me your free brochure *Successful Stamp Auction Bidding*.
- ☐ I have stamps I want to sell. Please contact me with information on upcoming auctions.

Name _____

Address _____

City _____ State _____ Zip _____

Day Phone (_____) _____

Evening Phone (_____) _____

For Faster Service Call Toll-Free 1-800-STAMPS-1 (782-6771)

Steve Ivy Philatelic Auctions, Inc.
Heritage Plaza • Highland Park Village • Dallas, Texas 75205-2788
WATS: 1-800-STAMPS-1 (782-6771) • In Texas: 214-528-3500 3 0 1 4 M

STEVE IVY PHILATELIC AUCTIONS

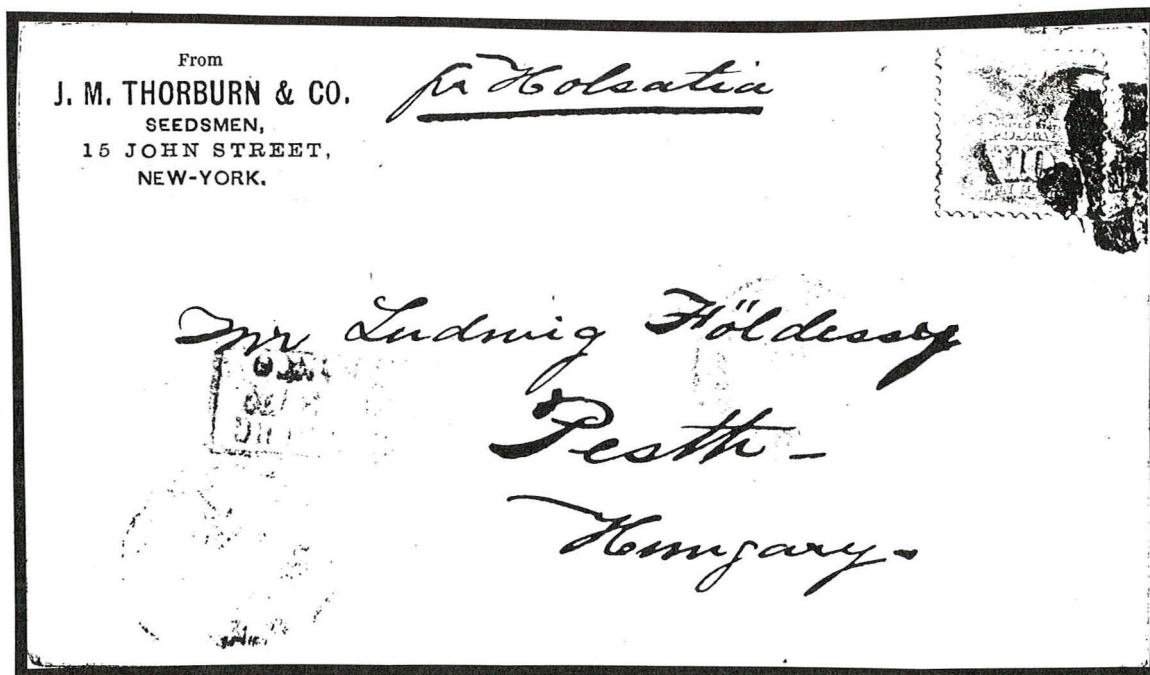
Heritage Plaza • Highland Park Village • Dallas, Texas 75205-2788
214-528-3500 • WATS: 1-800-STAMPS-1 (782-6771) • Texas WATS: 1-800-448-6470



Selected as an Official Auctioneer for Ameripex '86
Interpex 1987-1990, the APS Sales 1984-1990, and the World Stamp Expo



LAST LOOK



TO HUNGARY — A 10c 1869 to Pesth (Budapest), Hungary, pays direct rate 8 Mar. 1870 via HAPAG packet, "Holsatia." J. Rose Coll.

ARE YOU A COLLECTOR OF U.S. & WORLDWIDE STAMPS & COVERS

"AUCTIONEER'S OF THE
FREDRICK W. LOPEZ, SR.
1869 ISSUE COLLECTION"

We regularly offer Stamps, Revenues & Postal History in our renowned "Especially for Specialists"® Public Auctions.

AN INVITATION TO CONSIGN

Individual stamps, covers or collections for Public Auction or Private Treaty Sale

WE ALSO PURCHASE OUTRIGHT!

Contact us first describing your material. Include your address and phone numbers.

WHAT IS A SCHIFF "ESPECIALLY FOR SPECIALISTS"® AUCTION?

It's an auction designed with YOU in mind, whether you are a buyer or a seller of U.S. or Worldwide stamps. If you do not get our catalogues you are missing out! Send U.S. \$8.50 (U.S. \$15.00 overseas) for a year's subscription to catalogues and prices realized or send U.S. \$1.50 for our next auction catalogue and prices realized (U.S. \$1.00 catalogue only).

Catalogues picked up at our office are complimentary.

Jacques C. Schiff, Jr., Inc.

195 Main Street
Ridgefield Park, New Jersey 07660
201-641-5566 • from NYC 662-2777



Licensed and Bonded Auctioneers • Est. 1947

VENTURA STAMP

“Taking a Scholarly Approach to the Classics”

Sell to one of the world's
most aggressive and
highest paying buyers

24 Hours

or write
University Stamp Co., Inc.
P.O. Box 4784
Stamford, CT 06907



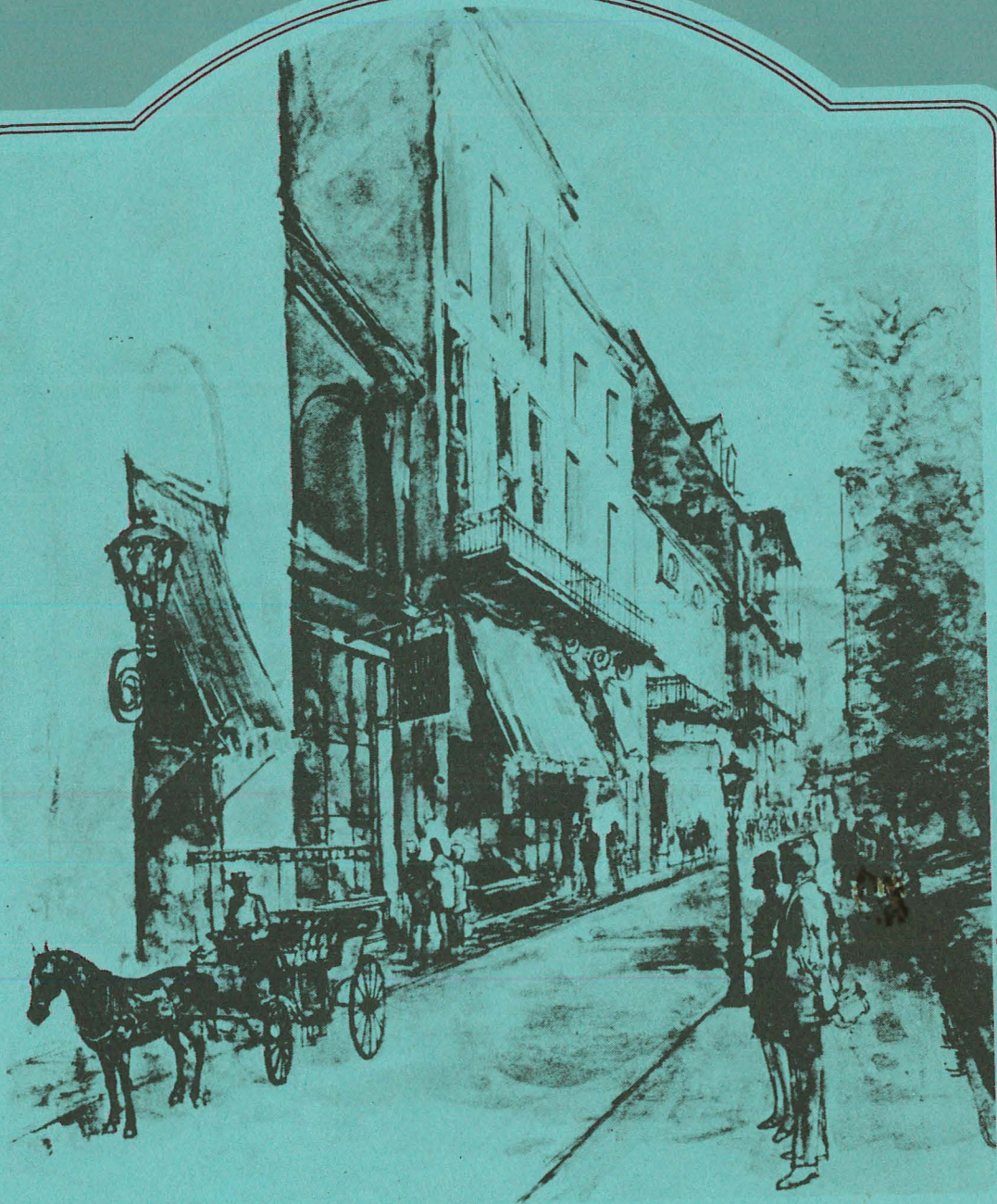
1869 PRA

Affiliate University Stamp Co., Inc.

Offers you an opportunity to take part in our fabulous quality U.S. net price list; a fully illustrated list with many 1869 items and other U.S. singles, mint, used, fancy cancels, multiples, proofs and covers. To receive your complimentary copy call...

or write
Ventura Stamp Company
P.O. Box 4760
Stamford, CT 06907





Recognized Buyers

Roger G. Weill • Raymond H. Weill

Raymond H. Weill Co.

*at 407 Royal Street
in New Orleans*