

1869 Times

QUARTERLY JOURNAL OF THE U.S. 1869 PICTORIAL RESEARCH ASSOCIATES, INC.

February 1990
Price \$5.00

Whole No. 48
Vol. 13, No. 3



Inside: Proposed Handbook Listings for the 10c 1869 by Michael Laurence

The U.S. 1869 Pictorial Research Associates

... dedicated to the advancement of knowledge through research and study of the 1869 issue.

1869 ISSUE

•
AS WELL AS ALL CLASSIC
UNITED STATES ISSUES
STAMPS AND COVERS
AVAILABLE
•

ROBERT A. SIEGEL, INC.

160 EAST 56th ST. - NEW YORK, NY 10022

Buying & Selling
QUALITY U.S.

44 Years Experience as a
Professional Philatelist
Specializing in Classic U.S.

Auction Agent and Consultant.

American Philatelic Brokerages

John Birkinbine II

7225 N. Oracle Road, Tucson, Arizona 85704

(602) 297-3456

WHEN SEEKING THE FINEST IN UNITED STATES PHILATELY:

- | | |
|------------------|--------------|
| ● UNUSED | ● REVENUES |
| ● USED | ● ESSAYS |
| ● STAMPLESS | ● PROOFS |
| ● POSTAL HISTORY | ● MULTIPLES |
| ● CLASSICS | ● AGENT WORK |
| ● BACK-OF-BOOK | ● LITERATURE |
| ● POSSESSIONS | ● INVESTMENT |

PHILIP T. BANSNER ALBERT F. CHANG WILLIAM T. CROWE

Send Your Name & Address For A Free Copy Of Our Net Price Catalog



**EMPIRE
GROUP**
INCORPORATED

*Box 2529
West Lawn, Pa. 19609
(215)678-5000*

1869 Times

Quarterly Journal of the
U.S. 1869 Pictorial Research Associates, Inc.
©Copyright 1990, All Rights Reserved
U.S. ISSN 0363-6542

Published by
The U.S. 1869 Pictorial
Research Associates, Inc.
30 Golf Road
Pleasanton, California 94566-9751
Membership in the 1869 P.R.A.
is available upon application.
Membership dues are \$20.00 per year



DIRECTORS

BRAD ARCH
144 Hamilton Avenue, Clifton, New Jersey 07011

THE REV. EDWARD BUSCH
4630 N. Wheeler, LaVerne, CA 91750

RICHARD CUTTS
1312 Elm Street, Georgetown, Texas 78626

JEFFREY M. FORSTER
10 Almaden Boulevard, Suite 1100, San Jose, CA 95113

KENNETH R. LAURENCE
Immediate Past President
13005 Keystone Terrace, North Miami, Florida 33181

JONATHAN W. ROSE
30 Golf Road, Pleasanton, California 94566-9751

RICHARD SEARING, Ph.D.
P.O. Box 1174, Yorba Linda, California 92686

REX H. (JIM) STEVER
First City Bank Trust FCB 16, Corpus Christi, TX 78477

WILLIAM M. WICKERT
3348 Clubhouse Road, Virginia Beach, Virginia 23452

SOCIETY OFFICERS

JEFFREY M. FORSTER
Chairman of the Board and President
10 Almaden Blvd., Suite 1100, San Jose, CA 95113

RICHARD SEARING, Ph.D.
Vice-President
Box 1174, Yorba Linda, CA 92686

WILLIAM M. WICKERT
Secretary-Treasurer
3348 Clubhouse Road, Virginia Beach, VA 23452

JONATHAN W. ROSE
Editor and Director
30 Golf Road, Pleasanton, CA 94566-9751

KENNETH R. LAURENCE
Immediate Past President and Director
13005 Keystone Terrace, North Miami, Florida 33181

MARGARET L. WUNSCH
Vice-President Emeritus & APS Representative
The Manor at Midvale, 6230 S. Commerce
Ct., #1113, Tuscon, AZ 85746-6000

1869 TIMES

February 1990 Whole No. 48
Price \$5.00 Vol. 13, No. 3

EDITORIAL BOARD

Jon Rose, *Editor-In-Chief*
30 Golf Road
Pleasanton, California 94566-9751

CONTRIBUTING EDITORS

Richard M. Searing, Ph.D.
cover census coordinator

The Rev. Edward Busch, D.D.
Off-Cover Varieties

Rex H. (Jim) Stever
1869 Specialized Catalog

Brad Arch & Jon Rose
Auction News

PUBLICITY DIRECTOR

Richard Cutts
1312 Elm Street
Georgetown, Texas 78626

PUBLICATIONS SALES DIRECTOR

Brad Arch, 144 Hamilton Avenue
Clifton, New Jersey 07011

Address changes should be sent to the secretary-treasurer; back issue orders to the publications sales director; and other correspondence to the editor-in-chief. Reports of new 1869 items should be made to the editor-in-chief. Do not send stamps or covers unless requested to do so. Any items sent will be safeguarded, but no liability for loss or damage attaches to any editor or the 1869 Pictorial Research Associates, Inc.

FROM THE EDITOR'S DESK

Calvet Hahn, author of the article in **Times 47** entitled, "Quantities Issued of the 1869 Issue -- A New Look," has submitted the following corrections to his splendid work in the November, 1989 **Times**:

- (1) Page 6: In Table I the quantity of 12c issued in the third quarter of 1869 should be 909,500 not 909,625.
- (2) Page 6: In the third text line from the bottom eliminate the "%" sign after 0.0003869.
- (3) Page 7: Third line from top, drop the word "grilling," which is redundant.
- (4) Page 13: Paragraph 4, line 5, change "presses" to "plates."

* * * *

The PRA board of directors is to meet during the INTERPEX show, Mar. 15-18, at the Sheraton Center Hotel, 7th Avenue at 53rd Street, New York City. Hope to see you all there. Steve Ivy will be holding an auction in conjunction with the show.

UPCOMING

The Rev. Ed Busch (PRA 262) has prepared a comprehensive update of the 1986 cover census book listings. The additions exceed 175. These are new listings for values 6c-90c, not found in the book. His list of covers will appear in **Times 49**, due in May. A new 10c cover submitted by Don Skove (PRA 394) is illustrated and explained on p.3 of this issue.

* * * *

CONTENTS: Times #48, February 1990

Page 2	From the Editor's Desk, Upcoming, On the Cover.....The Editor
Page 3	An Unusual Ten Cent Cover.....Don Skove
Page 4	Cancellation Colors Again.....Jon Rose, Editor
Pages 5-10	Handbook of the 1869 Issue-Ten Cent 1869.....Michael Laurence
Pages 12-15	1869 Covers Used in Maryland.....William M. Wickert
Pages 17-22	Auction ReportJon Rose, Editor
Page 24	Last LookThe Editor

* * * *

Advertisements: Robert A. Siegel, Inc.; American Philatelic Brokerages; Empire Group, all inside front cover; Christie's Robson Lowe, New York, (p.11); Steve Ivy Philatelic Auctions (p.16); Jack E. Molesworth, Inc. (p.22); Robert G. Kaufmann Auction Galleries, Inc. (p.23); Jacques C. Schiff, Jr., Inc. (p.24); University Stamp Co. & Ventura Stamp Co., inside back cover. Raymond H. Weill Co., back cover.

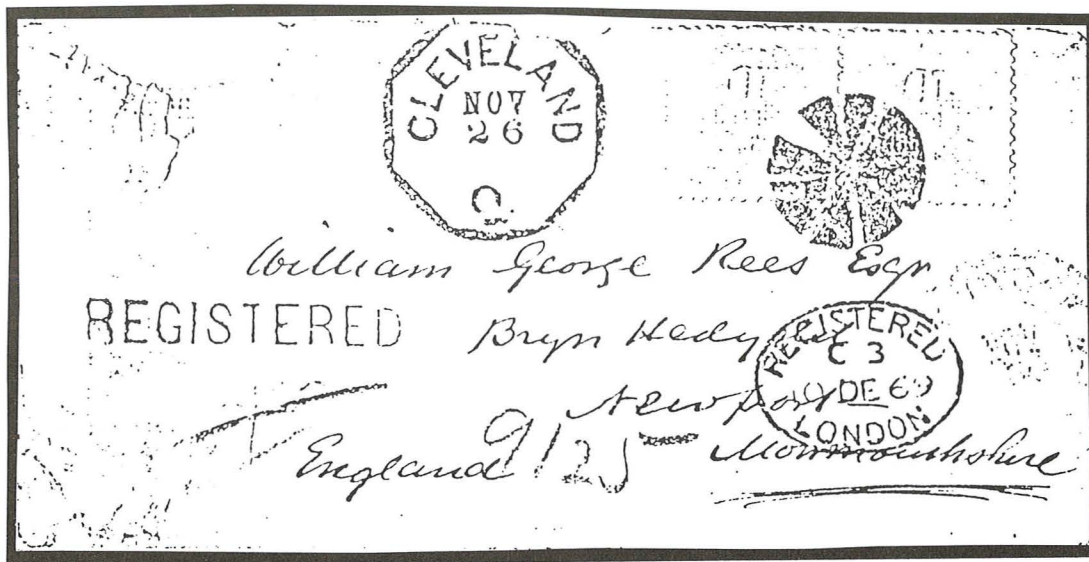
* * *

ON THE COVER: This apparent triple mixed franking cover bears a Peruvian 1 dinero green, GB 6d bright violet and a 10c 1869, paying the Peruvian internal rate and British & US transit rates. Note that the 10c 1869 did not originate, as the NY Steamship marking is of the type used on incoming mail without pre-payment, and is a due marking. Mailed 22 Oct 1870 from Callao, via Panama, to New York City.

AN UNUSUAL TEN CENT COVER

By Don Skove PRA 394

Editor's Note: The photocopy illustration below of the most unusual double 10c cover from Cleveland, Ohio, to Newport, England, was submitted by Don Skove, PRA 394, of Charlottesville, VA. It is not listed in the cover census book listings of 10c usages, compiled by Michael Laurence. I cannot ever remember seeing anything like this use. Registered covers sent abroad during the 1869 period are very scarce. Note that although the registry fee for domestic letters in 1869 was 15c, for those to Great Britain & Ireland it was 8c, which explains the odd 20c rate to England. The remaining 12c of course pays the single half-ounce letter rate.



While going through my father's collection of Cleveland postal history, I came across a cover (illustrated above) with a pair of 10c 1869s and an octagonal Cleveland, Ohio, CDS for Nov. 26. It is an interesting cover from Ohio at the 12c letter rate plus 8c for registration.

The "REGISTERED" straight line marking and the numbers "9125" and "76" are all in blue. The New York registered marking (blurred, at right) for Nov. 30 appears to be in brown or magenta. The London registered oval for Dec. 10 is in black. The stamps are tied by a black circle of wedges killer. On the reverse of the cover is an arrival CDS handstamp for Newport, dated Dec. 11, 1869. Also on the back is the signature of Stanley Ashbrook.

I plan to bring my father's award-winning collection of Cleveland postal history to the 100th anniversary of the Garfield Perry Stamp Club, to be held in Cleveland in early March.

CANCELLATION COLORS AGAIN

BY JON ROSE, Editor-in-Chief

I have a particular fondness for colored cancellations on the 1869 Issue. In fact I value them just as much as such fancy strikes as those from Waterbury, CT. In **Times 46** (p.2) I spoke of the rarity of examples in orange, ultramarine and "real" brown on all values of the 1869 Issue. In **Times 47** (p.2) Alden Holt attempted to explain what ultramarine is.

Several months ago Harvey H. Henderson (PRA 530) of El Cajon, CA., wrote me a letter relating some recent experiences he has had with colored cancels on 1869s. Wrote Henderson:

"I noted your comments in **Times 46** about the rarity of orange, ultramarine and real brown cancels on 1869s.... Just last week (early December) I had a winning bid on a 6c 1869, described simply as "VF." It turns out to have an orange CDS (not listed in **Scott's US Specialized**, which does list orange for the 3c stamp with a \$7!?! premium). My wife and daughter say it is red, however. The cancel shows about 120 degrees of arc and is probably from New York. The usual black cork cancel accompanies. I am tempted to send the 6c to the Philatelic Foundation.

"I also have a 15c Type II upon which a smudge of orange (possibly red-orange) shows, along with the usual black killer cork... I also have a 3c which shows maybe 60 degrees of arc of an orange (perhaps red-orange) CDS.

"I have read Holt's comment in **Times 47** ("What is Ultramarine?" by Alden L. Holt), and am unable to determine if a cork cancel on a 6c and an 1876 year date cancel on a 15c Type II are blue or ultramarine. The cancels certainly are not the vivid blue of the 15c's vignette, and appear closer to the ultramarine color of the 3c and 6c stamps."

Comments from other PRA members are welcome. My feeling is that red strikes are often mistaken for other colors, three of which are brown (if a dirty cancel), or a variety of orange or pink, depending on the cancel ink's composition.



Henderson also sent along a PF certificate photo of the 2c 1869 illustrated above. The PF certificate stated, "... apparently genuine, probably a revenue use, but decline opinion as to place & date of use." Henderson notes: The manuscript cancel reads "WE & U" (or "WC & W" or "WE & W"). The "AS" is probably the writer and the date is "MAR 27 1869." Note that this would be the second earliest recorded date of use of the 2c stamp (A cover is known used Mar. 26, 1869 within New York City).

HANDBOOK OF THE 1869 ISSUE AND THE 1875 & 1880 RE-ISSUES

TEN CENT 1869

By Michael Laurence PRA 7



**Supplementary Mail Type A Cancel
(upside down in boxed oval)**

Recent issues of the **1869 Times** have featured preliminary catalog listings for the 2¢, 3¢, 15¢ Type II and 24¢ 1869 stamps. These are the first tentative steps toward publication of a specialized 1869 catalog, an important project that all members of this group should welcome and support.

Jon Rose's notes for the 2¢ 1869 stamp were published in **Times 43**(p.4) and Jim Stever's data for the 3¢ 1869 stamp appeared in **Times 44**(pp 6-9). Ed Busch compiled information on the 15¢ Type II in **Times 45**(pp 5-10) and Rose provided data on the 24¢ 1869 in **Times 46**(pp4-12). These articles contained useful suggestions about what form the ultimate catalog should take. Readers might want to go back and review these four important articles.

At Editor Rose's strong exhortation, I have prepared the following catalog notes pertaining to the 10¢ 1869 stamp. The listing consists entirely of material that I have seen with my own eyes. Because of this, the lack of listing does not mean that an item doesn't exist, or even that it is necessarily scarce — just that I have not seen it. For example, seven of eight possible arrow positions are listed, The unlisted position — straight edge at left, vertical arrow at lower left — should theoretically be no scarcer than other straight-edge arrow positions. But it is not listed, because I have never laid eyes on one.

A major unanswered question concerning the proposed catalog involves scarcity and value

information. With a few exceptions, I have followed the lead of Rose (2¢) and Stever (3¢) in not including scarcity or value data in the listing which follows. However, I hope that the finished catalog will contain as much information as possible respecting the scarcity of individual items. Value is another matter. Value is subjective and ever-changing, and for that reason should probably be avoided, or at least expressed very hesitantly, in the most general terms.

I agree with Stever that the 1869 specialized catalog should contain as much detail as the collective resources of this group can assemble. Because of constraints on my time, the 10¢ listing that follows contains no information on essays, proofs, re-issues or specimen overprints (to cite just four examples), although I certainly hope such information will appear in the ultimate catalog. There are no doubt other omissions as well, and I welcome additions and corrections.

THE 10-CENT 1869

I SHADES: Yellow, yellowish orange

II PLATE MARKINGS:

Plate number singles: 15, 16

Arrows (seven of eight positions recorded):

Straight edge right, vertical arrow at lower right

SE right, vertical arrow at UR

SE left, vertical arrow at upper left

Perforations all around, horizontal arrow at LL, UL, LR, UR



Top Margin Imperforate

III PERFORATION VARIETIES:

Top margin imperforate

Top margin imperforate, "No. 15" in margin

Double perforations (vertical)

Double perforations (horizontal)



Continuous (End Roller) Margin grill

IV GRILL VARIETIES:

Double grill
 Split grill (horizontal)
 Split grill (vertical)
 Quadruple split grill
 End roller Grill

V MULTIPLES:

(I have recorded a total of 21 blocks of four or larger)

Unused

Bottom imprint block of 15 (5x3) — **largest mint multiple**
 Block of nine
 Horizontal block of six (2)
 Right margin block of four, arrow
 Right margin block of four, part arrow at top
 Right margin block of four (2)
 Top margin block of four
 Block of four (7)

Used

Horizontal strip of six (N.Y. Steamship cancels) — **largest used multiple**
 Horizontal strip of five (see cover **1869 Times 42**, Feb. 1988)
 Block of four (5)

VI CANCELLATIONS (On off-cover stamps):

Colors: Black, blue, red, magenta, purple, brown, green
 Towns: Black, blue, magenta, brown, green



Exchange Office Credit "5" in Circle

VI CANCELLATIONS (On off-cover stamps) — cont.:

Numbers:

Rating marks (black): 1, 3, 10

Exchange office credits (red): 2½, 5, 12

Year dates (black): 72, 73

Letters: A, D, E, H, Mc, N, T, US, W

Territorial: Sitka, Alaska T.; Santa Fe, New Mex.; Tucson, Ari.

Railroad: Morris & Essex RR

Registered:

REG

Manuscript

Various handstamps

New York foreign mail markings:

Supplementary mail

New York exchange office markings:

— Straightline "INSUFFICIENTLY PAID"

— New York Paid All Br Transit (red)

— New York with "X" (red and black)

— New York with "-+-" (red and black)

— New York Steamship (black, 1 red known)

— Steamship 20

Philadelphia exchange office marking:

— INSUFFICIENTLY PAID in oval

Foreign (Origin markings):

Japan: Hiogo, Yokohama, Nagasaki

China: Shanghai

BPO Hong Kong (B62)

BPO British Guiana (A03)

Victoria, V.I.

Rio de Janeiro

Foreign (Transit markings):

British:

— London

— London PAID

— Maynooth, Ireland

VI CANCELLATIONS (On off-cover stamps) — cont.:

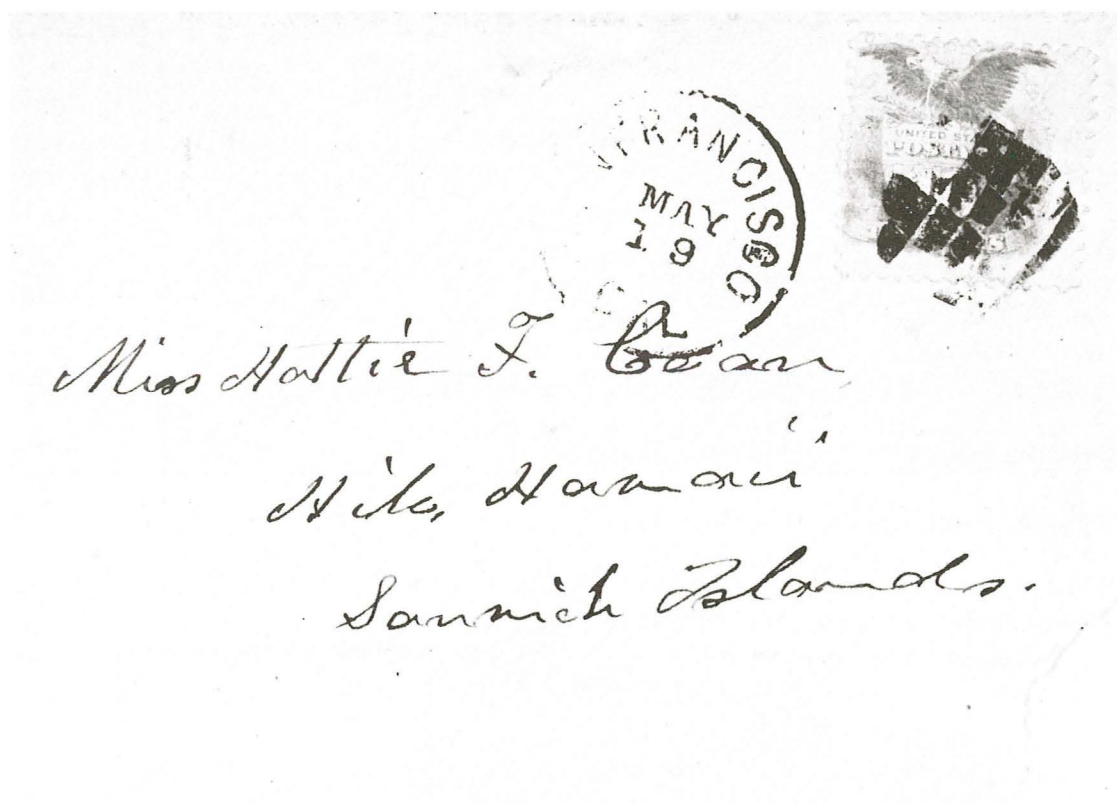
Foreign (Transit markings):

French:

- Calais
- Cherbourg
- Maritime anchor in a diamond of dots

German:

- Boxed Bremen
- Boxed Hamburg
- Verviers—Cologne



10¢ to Sandwich Islands — San Francisco, 19 May 1870, by private (subsidized) ship to Hilo, Hawaii. Hattie Coan correspondence.

VII COVERS:

1. By foreign destination:

More than 10 known: Germany, France, Cuba, Switzerland, United Kingdom, Italy, Peru, Mexico, China, Denmark, Sweden, Br. North America, Spain, Japan, India, New Grenada (Aspinwall)

Fewer than 10 known: Antigua, Argentina, Austria, Belgium, Bolivia, Brazil, British Columbia, Br. Guiana, Br. Honduras, Bermuda, Ceylon, Chile, Corsica, Greece, Guatemala, Hawaii, Hungary, Java,

VII COVERS: (cont.)

1. By foreign destination:

Fewer than 10 known (cont.): Netherlands, New South Wales, New Zealand, Norway, Poland, Portugal, Santo Domingo, Seychelles, Siam, Singapore, South Australia, Spain, South Africa, Tasmania, Turkey, Uruguay, Victoria

2. By foreign origin:

More than 10 known: China, St. Thomas (and other Caribbean origins via St. Thomas), Japan

Fewer than 10 known: Brazil, Br. Columbia, Bermuda, Cuba, New Grenada, Hawaii, Peru

3. By stamps:

— Single 10¢ 1869

— Pair

— Strips of three (horizontal and vertical)

With other U.S. stamps:

— 1861-67 series: 1¢, 2¢, 3¢, 5¢, 10¢, 15¢, 24¢

— 1869's: 1¢, 2¢, 3¢, 6¢, 12¢, 15¢ (Type II), 24¢, 30¢

— Bank Notes: 1¢, 2¢, 3¢, 6¢, 12¢

On entire envelopes:

— Nesbitt: 3¢, 9¢, 10¢

— Reay: 1¢, 3¢

— Plimpton: 2¢, 3¢

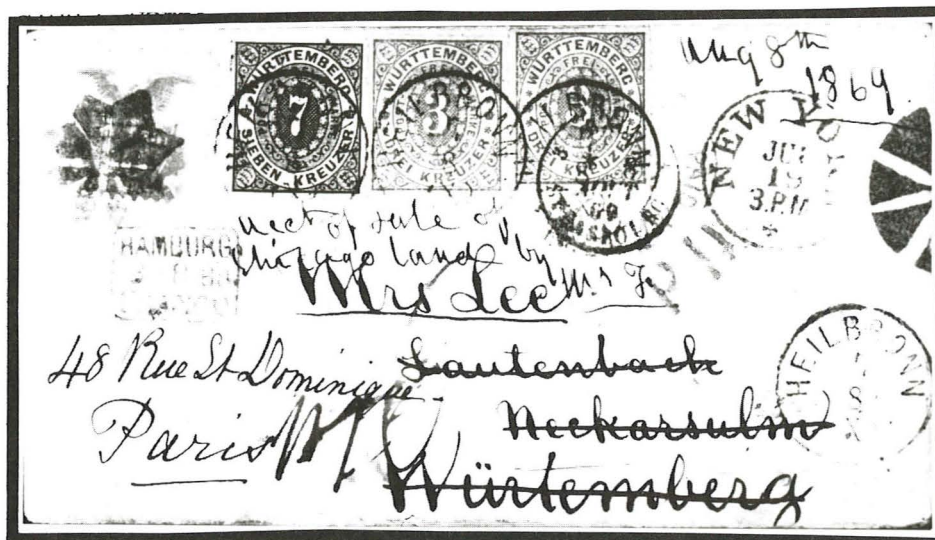
Mixed frankings:

— Baden, Br. Columbia, Danish West Indies, England, France, Hawaii, India, Peru, Wuerttemberg

4. Advertising Covers: Corner cachet, overall imprint

5. Campaign Covers: Grant-Colfax, Blair-Seymour

6. Earliest known use: April 1, 1869, on a cover from New Orleans to Spain, originally in the Hirzel collection, now in the Swiss PTT Museum, Berne.



Mixed Franking — 10¢ 1869 pays direct rate, July, 1869, NYC to Wuerttemberg, where 13 kreuzer in red and blue Wuerttemberg stamps applied for redirection to Paris.

U.S. and Worldwide Stamps and Covers including the Weill Brothers' Stock



March 13-15, 1990

including a quality selection of
1869 stamps and covers,
important U.S. Postal History,
a significant Confederate States offering
and British Commonwealth.

Consignments are now being accepted.
For further information please contact:

Elizabeth Pope or Tor Bjork
Christie's Stamp Department
212-546 1087

illustrated above:
The magnificent 1869 90c Re-issue imprint and
plate number block of twelve, sold for \$132,000
in the October 12 auction of
The Weill Brothers' Stock



CHRISTIE'S

502 Park Avenue
New York, N.Y. 10022

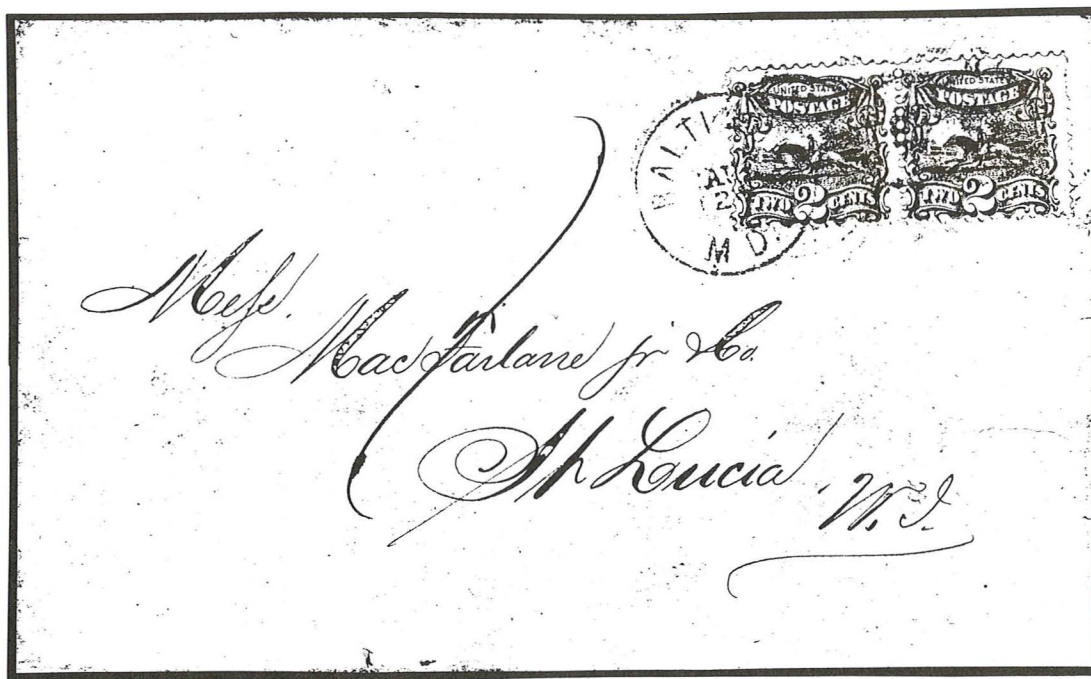
1869 COVERS USED IN MARYLAND

By William M. Wickert PRA 373

In **Times 43** (June, 1988, pp 18-20), I discussed 1869 covers used in Virginia. North Carolina covers were examined in **Times 45** (February, 1989, pp 11-12). This time I will discuss 1869 usages in Maryland. Again, I shall omit the 1c, 2c (But note the rare 2c usage from Baltimore illustrated below) and 3c values, and cover the 6c-24c Maryland usages. (There are no 30c or 90c examples.) Actually, the field is less than 60 covers of all values and classifications, as enumerated in the 1986 cover census book. (See: **The 1869 Issue on Cover: A Census and Analysis**, edited by Jonathan W. Rose and Richard M. Searing, published by the U.S. 1869 Pictorial Research Associates, Inc.) With such a small number of covers, we can look at both covers entering and leaving Maryland.

There are 420 6c covers in the census, but Maryland can lay claim to only 10. Six originated in Maryland, and four were sent to Maryland. As is often the case with 1869 Issue covers, dates of usage are difficult or impossible to determine. These ten 6c covers were mailed, apparently, between September, 1869, and June, 1870. There are three which cannot be dated as to day, month and year.

Thanks to Michael Laurence, who has been recording examples of 10c covers for many years, we list 1,038 examples. Nineteen of these originated in Maryland, but only two have domestic destinations. The other 17 were sent to one of five different foreign countries. All 19 were mailed during a nine-month span, Aug. 18, 1869-May 22, 1870.

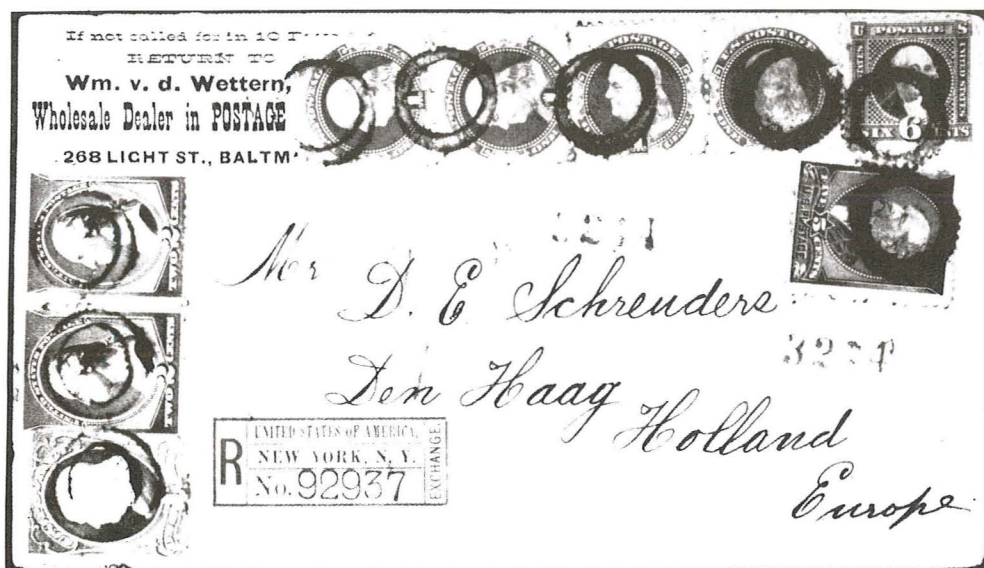


Baltimore, Maryland, 28 Aug 1869, to St. Lucia, Br. Windward Islands. Pair of 2c red brown 1869s pay third class printed circular rate via St. Thomas. Baltimore foreign mail CDS duplex plus red dot in circle cancel.

Of the reported 423 covers with the 12c 1869, just nine traveled through Maryland. Eight of these originated in Maryland with several going to one of three foreign countries. The ninth is a domestic cover with Maryland as its destination. Apparently, all these covers were mailed during a 13½ month period, July 6, 1869 - Aug.29, 1870.

The 15c 1869 stamp saw limited use in Maryland. None of the 133 15c Type I covers was mailed to or sent from Maryland. However, 13 15c Type II covers are recorded used in Maryland. Twelve originated in Maryland, and nine were mailed abroad. Two covers were mailed to other states and one was sent to Maryland. The 13th cover arrived in Maryland from New York City. The 15c Type II covers entered the mails between Aug. 25, 1869 and February, 1870.

About 75 covers are now recorded which are franked with the 24c 1869. Only one, from Baltimore to Barcelona, Spain, 5 August 1870, has a Maryland connection. Fifty-eight covers with the 30c 1869 are listed. None of these shows use in Maryland. None are known with the scarce 90c 1869.



This cover, from Baltimore stamp dealer, William Wettern, was sent 30 Jan 1884 to the Haag, Holland. Double 5c UPU rate and 10c registry fee were paid by four copies of the 1c soft-paper 1880 re-issue, a 6c 1875 re-issue (only cover usage known), and four American Bank Note Co. stamps of 1c, 2c and 5c denominations.

There are two other categories of Maryland usage. One comprises the re-issues of 1875 and 1880, in which there are 29 covers recorded. Four of these rare covers were used from Baltimore, Maryland. All four were used during a period of about six months, January, 1884, to July, 1884. One is illustrated above.

The final category is mixed frankings with a list of 87 covers. One of

these was sent from Baltimore to Sheffield, Great Britain, 3 Sept 1869, franked with a 12c 1869 and a GB 1d rose red (1864), the latter paying the forwarding charge.

In conclusion, of the 2,600 covers in the census, about two per cent were sent from or to Maryland. I believe that there are more Maryland covers with 1869 stamps out there. It will prove interesting to see whether or not any more Maryland covers come out of hiding.

TABLE I

<u>Origin/Destination</u>	<u>Date</u>	<u>Stamp(s) Used</u>
THREE CENT		
Davidsonville,MD/Wilmington,DE	1/26/70	Block of six, Reg.
SIX CENT		
Baltimore,MD/Church Creek, MD	-/--/69	114(1),115(1),117(1)
Hartford,CT/Sandy Spring,MD	6/18/70	115(1)
Hartford,CT/Sandy Spring,MD	9/--/--	115(1),117(2)
Hartford,CT/Sandy Spring,MD	9/--/69	115(1),117(1)
Williamsport,PA/Baltimore,MD	6/13/--	115(1)
Baltimore,MD/Rotterdam,Holland	10/6/69	115(1)
Annapolis,MD/Middlesex,GB	2/10/70	115(1)
Baltimore,MD/??, Great Britain	3/25/70	115(1)
Baltimore,MD/Liverpool,GB	5/17/70	115(1)
Emmitsburg,MD/??, Italy	-/--/--	112(1),115(1),117(1)
TEN CENT		
Baltimore,MD/Bremen,Germany	8/18/69	116(1)
Baltimore,MD/Santiago,Cuba	8/18/69	116(1)
Baltimore,MD/Liberty,VA	9/ 8/69	113(2),116(2)
Baltimore,MD/Santiago,Cuba	9/ 9/69	116(1)
Baltimore,MD/Santiago,Cuba	9/15/69	116(1)
Baltimore,MD/Santiago,Cuba	9/22/69	116(1)
Baltimore,MD/Germany	10/31/69	116(1)
Baltimore,MD/Germany	11/5/69	116(1)
Baltimore,MD/Havana,Cuba	11/14/69	116(1)
Baltimore,MD/??,Germany	11/17/69	116(1)
Baltimore,MD/Santiago,Cuba	11/29/69	116(1)
??,MD/??, Poland	2/ 1/70	116(1)
Baltimore,MD/??,Germany	4/ 1/70	116(1)
Baltimore,MD/Weimar,Germany	4/ 1/70	116(1)
Annapolis,MD/Rio de Janeiro,Brazil	5/22/70	116(1)
??, MD/Jefferson City, NY	7/18/--	116(1)
Baltimore,MD/Marburg, Germany	1/--/70	116(1)
Baltimore,MD/??, Germany	3/2-/70	116(1)
Baltimore,MD/??, Germany	4/--/70	116(1)

Origin/DestinationDateStamp(s) Used**TWELVE CENT**

Baltimore,MD/Liverpool,GB	7/ 6/69	117(1)
Baltimore,MD/London,GB	7/18/69	117(1)
Baltimore,MD/Sheffield,GB	9/ 3/69	117(1), GB #33
Annapolis,MD/London,GB	12/8/69	117(1)
Baltimore,MD/??, Peru	8/29/70	117(1), 150(1)
Emmitsburg,MD/??, Italy	--/-/--	112(1),115(1), 117(1)
Baltimore,MD/Oxford,GB	--/-/69	117(1)
Baltimore,MD/Church Creek,MD	--/-/69	114(1),115(1),117(1)
New York, NY/Baltimore,MD	8/28/--	117(1)

FIFTEEN CENT - TYPE I

NONE RECORDED

FIFTEEN CENT - TYPE II

Smithville,MD/Erie,PA	8/25/69	114(2),119(1)
Baltimore,MD/Amsterdam,Holland	12/27/69	119(2)
Baltimore,MD/ ??, Italy	1/ 7/70	113(2), 119(1)
Emmitsburg,MD/Baltimore,MD	1/18/70	114(1),119(1)
Baltimore,MD/Rome, Italy	1/18/70	113(2),119(1)
Baltimore,MD/Rome,Italy	1/28/70	119(1)
Baltimore,MD/Rome,Italy	2/16/70	119(1)
Baltimore,MD/??, Switzerland	4/ 2/70	119(1)
Smithsburg,MD/Alfred,ME	10/25/70	119(1),147(1)
New York,NY/Baltimore,MD	10/16/--	114(6), 119(1)
Baltimore,MD/Turin,Italy	11/--/69	119(2)
Baltimore,MD/Rome,Italy	1/ 1/70	113(2), 119(1)
Baltimore,MD/??, Italy	2/--/70	119(1)

TWENTY-FOUR CENT

Baltimore,MD/Barcelona,Spain	8/ 5/70	120(1),146(2)
------------------------------	---------	---------------

THIRTY CENT & NINETY CENT

NONE RECORDED

RE-ISSUES - 1875 & 1880

Baltimore,MD/Halifax, Nova Scotia	6/ 7/84	124(1)
Baltimore,MD/Haag, Holland	1/30/84	126(1),133(4),205(2), 206(1), 210(2)
Baltimore,MD/??, Hungary	5/ 2/84	124(1),128(1),133(1)
Baltimore,MD/Marengo,Ohio	7/ 3/84	133(2)

MIXED FRANKING

Baltimore,MD/Sheffield,GB	9/ 3/69	117(1), GB #33
---------------------------	---------	----------------

THE STAMPS YOU THOUGHT YOU'D NEVER FIND ARE IN THIS SALE!

NEW YORK, NEW YORK!

THE 1990 INTERPEX SALE (MARCH 16-18)

FEATURING

THE LEON A. GREENBLATT III COLLECTION OF U.S. RARITIES!

Get your bids in for the most exciting auction of U.S. material this year: the \$3 million official ASDA INTERPEX Sale in New York City, featuring the Leon A. Greenblatt III Collection of U.S. Rarities! This collection alone is valued at more than \$1 million! You'll be amazed at the literally hundreds of extremely rare U.S. gems of the highest quality, many you may have thought you'd never see available...

- virtually every U.S. reprint, reissue, and special printing, including the extraordinarily rare "newspaper" special printings;
- inverted centers, including used examples of the 15c and 30c 1869 pictorials and the 1901 Pan-Americans complete mint;
- Complete mint 1909 bluish papers;
- plus dozens of highly sought-after U.S. collector's stamps, such as a Scott 316 pair, 482A, 485 double error, 544, 594, and 613.



Can't Make It To New York? You Can Bid By Mail, FAX, or Phone! It's Easy!

You don't have to travel to take advantage of this sale. You can place your bids right from our full-color sale catalog. It's easy! Simply, choose the stamps you want and complete the bid sheet enclosed right in the catalog. Then, send it in by mail or the Steve Ivy FAX Hotline (214) 520-6968. You can even bid by phone up to the last few hours before the sale!

Sale Dates: March 16-18

Order Your Full-Color Sale Catalog Today! Call NOW:

1-800-STAMPS-1 (782-6771)

Or Complete The Coupon Below:

Virtually all are accompanied by Philatelic Foundation Certificates.

That's Not All! Name Your Prices on Over 3,000 Lots!

Build your collection fast with our highly popular large lots. Choose from a rich selection of foreign material. Name your prices on specialized offerings of lovely multicolored advertising covers of the U.S., including an impressive array of "gun" covers. More than 3,000 lots to bid on!

No Hold-Backs. No Reserves. You Can Get the Stamps You Want at the Prices You Want to Pay!

Come to New York, and thrill to the excitement of bidding at one of this year's top auction events! There are no minimum bids at this sale. So line up your bids and name your prices. Every lot will be sold to a buyer like you!

STEVE IVY PHILATELIC AUCTIONS

Heritage Plaza • Highland Park Village • Dallas, Texas 75205-2788
WATS: 1-800-STAMPS-1 (782-6771) • In Texas: 214-528-3500

Selected as an Official Auctioneer for Ameripex '86,
Interpex 1987-1990, the APS Sales 1984-1990, and the World Stamp Expo



- ☐ **YES!** Please send me a copy of Steve Ivy's INTERPEX '90 auction catalog. Enclosed is a check or money order for \$7.00 a copy.
- ☐ I want a FREE one-year subscription to your full-color auction catalogs, including the Steve Ivy INTERPEX '90 Sale catalog. Enclosed is a single invoice showing a purchase of \$250 or more from another stamp company, or a check or money order for \$20.00
- ☐ Please send me your free brochure *Successful Stamp Auction Bidding*.
- ☐ I have stamps I want to sell. Please contact me with information on upcoming auctions.

Name _____

Address _____

City _____ State _____ Zip _____

Day Phone (_____) _____

Evening Phone (_____) _____

For Faster Service Call Toll-Free 1-800-STAMPS-1 (782-6771)

Steve Ivy Philatelic Auctions, Inc.

Heritage Plaza • Highland Park Village • Dallas, Texas 75205-2788
WATS: 1-800-STAMPS-1 (782-6771) • In Texas: 214-528-3500

3011T

AUCTION REPORT

By Jon Rose

Editor-in-Chief

1869 PRA Publications

Editor's Note: All prices realized include 10% buyer's premium

ROBERT A. SIEGEL AUCTION GALLERIES, INC. SALE 709 May 22-25, 1989 New York City



This was a large auction of more than 3,100 lots, which included United States postal history, 19th and 20th century stamps and literature. In the brief section of 1869 covers there was a six cent (Sc.#115) used to England and tied by Rocheport, MO, CDS and New York transit which sold for \$253. A pair of 10¢ 1869s tied on 1872 cover to France via London (with PFC) sold for a reasonable \$231 (See illustration above). A very good Type I 15¢ used early (June 2, 1869) on cover from New York to France sold for a modest \$330. Earliest known usage of this stamp, which catalogs \$1,300 on cover (1989), is May 23, 1869. A domestic registered cover franked with the 15¢ Type II and a 3¢ National Bank Note (#147) went for \$176 (estimate: \$250-\$350).

Off cover 1869 Pictorials sold well, especially those stamps and essays of the highest quality. A very fine Jones essay (picturing U.S. Grant, Brazer 112E-Ab), in black with pale red violet wavy lines, no denomination, vf, sold for \$1,155 (estimate: \$1,000-\$2,000); a choice set of 1-90¢ plate proofs on India (112P3-122P3) realized \$522.50; and a f-vf og copy of the 12¢ Adriatic sold for \$577.50. A large-margined, unused ef copy of the 15¢ Type I, very fresh with PFC, went for \$2,420, well above catalog (See illustration above).

Also, a well-centered unused copy of the 24¢ with faint toning on back realized \$1,100 (cat: \$2,500). A very fine used copy of the 24¢ sold for \$412.50, and a huge-margined. og (hr) copy of the 30¢ 1869 (FPC) sold for \$3,300, well above \$2,250 catalog (See illustration). Two well-centered used copies of the 90¢ Lincoln, one with faint wrinkle. sold for \$1,100 apiece. A beautifully centered used copy of the 24¢ re-issue (#130) realized \$742.50, well above catalog of \$550.



CHRISTIE'S ROBSON LOWE NEW YORK

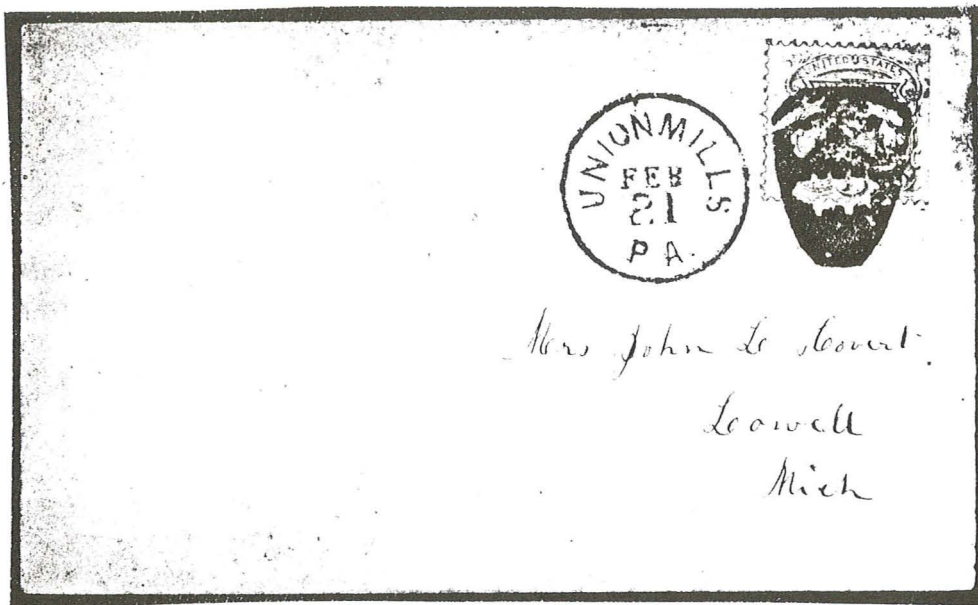
SALE 51

June 12-14, 1989

This was a large, well-attended sale of almost 3,000 lots, which included 91 lots of off-cover 1869s and 1875 & 1880 re-issues. A 2¢ brown (#113) with "HIOGO" Japan cancel sold for \$242; a 3¢ 1869 with bold, black "US/SHIP" two-line strike went for \$275 (See illustration above); a newly discovered used copy of the 24¢ invert (#120b), off-center with corner crease and short, sealed tear, sold for \$4,620. An og block of four of the 30¢ 1869 without grill (ex-Caspary, Lilly, Grunin), v-vf, sold for just \$8,800 against catalog of \$18,500 (Illustration above); and a well-centered, used copy of the 90¢ Lincoln (deep colors) realized \$2,420 (cat., \$1,200 and illustrated above).

In the 1875 re-issues, a fine, unused 3¢ blue made \$1,540; and an extremely rare used copy of the same stamp (about 10 known), f-vf, ex-Juhring, sold for a colossal, record-shattering price of \$26,400 after wild bidding (See illustration). This same stamp sold for \$4,000 in the John Juhring Collection sale held by Sotheby Parke Bernet Stamp Auction Co., Inc. on June 14, 1978. A very fine used copy of the 12¢ re-issue realized \$1,430. Four unused copies of the 90¢ re-issue (#132), sold for prices ranging from \$2,310 to \$1,320.

Christie's sold some 23 1869 cover lots in this sale. Most noteworthy was a 3¢ 1869 from Union Mills, PA, bearing the



Ku Klux Klan mask cancel, Union Mills, PA, Feb. 21, 1870 to Michigan, One of two recorded. Sold for \$8,800 by Christie's.

distinctive Ku Klux Klan Mask cancel, boldly and fairly well struck. This very fine item, used Feb. 21, 1870, on cover to Michigan sold for \$8,800 to a telephone bidder. Only one other example of this cancel on cover has been reported. (The Christie's cover is illustrated above.)

A 10¢ 1869 on blue April, 1870 cover to France with 8 decimes due marking, the stamp being very fine, sold for \$550. A cover to Hannover, Germany, franked with the 2¢, 3¢ and 10¢ 1869s paying the 15¢ rate via England in April, 1870, sold for a respectable \$352. The cover is illustrated on p.11 of **The 1982 Register**. Another 10¢ cover, this one with two copies of the 10¢ Eagle and a 3¢ 1869 used on a domestic courthouse cover, sold for \$176 to a floor bidder.

ROBERT G. KAUFMANN AUCTION GALLERIES, INC. SALE 58 May 13, 1989

Only 14 lots of 1869 covers were sold at this spring sale. However, one of the 30 recorded 2¢ bisects, a vertical bisect on October, 1869 cover from Charlottesville, VA (with PFC), sold for \$605. A 3¢ ultramarine tied by the Waterbury small bee fancy strike sold for \$825. The Chase correspondence cover was expertly repaired along one edge. A 10¢ cover from Shanghai with the typical U.S. Con. Genl. postmark went for \$632.50. A 12¢ usage to England, but tied by the Thomaston, ME shield cancel, brought \$577.50.

ROBERT G. KAUFMANN AUCTION GALLERIES, INC. SALE 62 Nov. 26-27, 1989

This was a spectacular postal history sale of the "Patrick Henry" Collection, belonging to Boston stamp dealer, Jack Molesworth, who assembled it mostly between 1955 and 1971. According to Molesworth the

collection had remained intact since 1955, and nothing was "ever offered for sale from my collection prior to the auction." The sale was held during World Stamp Expo '89 in Washington, D.C. It consisted of 1653 cover lots ranging from the 1847 Issue through the large Bank Note period. Featured were transatlantic, transpacific, and Caribbean usages, plus covers used to Central, North and South American destinations. The catalog was arranged by country of destination. There were more than 100 1869 covers, the commonest destinations being France, Germany and Italy.

Prices realized for a few of the better or more interesting 1869 covers are as follows. I would suggest all members of the 1869 PRA secure a copy of this catalog and the list of auction prices realized.



A 15¢ Type II (#119) on 5¢ overpaid cover to Brussels, Belgium, a very rare destination for 1869 issues, sold for \$1,100 to a PRA member. One of about eight Wingate correspondence covers to the U.S. Consulate, Swatow, China, franked with a pair each of the 3¢ 1869 and the 2¢ F grill Black Jack, realized \$2,640. (See illustration above.). A 10¢ cover to Copenhagen, Denmark, from the Warner correspondence, marked "INSUFFICIENTLY PAID," sold for a fat \$880. Three copies of the 15¢ Type I (#118), paying the triple rate to Paris via Fr. Line packet "Lafayette," brought \$4,125. An interesting double 15¢ NGPU cover to Berlin, Prussia, franked with copies of the 3¢ and 12¢ 1869s, plus a 15¢ "F" grill Lincoln (#98), used Nov. 8, 1869, sold for \$1,100 (See photo above).

A 10¢ 1869 on cover to Guatemala from New York City was sold to a PRA member for \$660. A 6¢ 1869 on "SHORT PAID" cover to Rotterdam, Holland, brought \$577.50. Another 10¢ cover, to Pesth (Budapest), Hungary, and sent Mar. 8, 1870, sold for \$990 to a PRA member. A cover to Rome, Italy, with a 2¢ and 12¢ 1869 paying the 14¢ NGPU direct rate, went for \$550. A scarce cover (Aug. 1, 1870) to Yokohama, with the 10¢ transpacific rate paid by two copies each of the 2¢ 1869 and the 3¢ no-grill Washington Bank Note (#147), realized \$1,045. A 12¢ cover to Yokohama (2¢ overpay?), mailed July 5, 1871, sold for \$770.

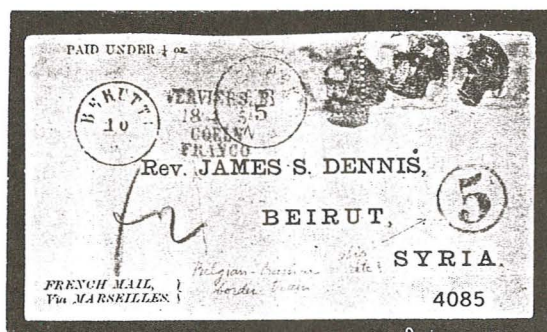
A cover to Mankanoi, New Zealand, franked with the 10¢ and 12¢ 1869s (the 22¢ rate was in effect only 10 months), was bid to \$1,265. A Davis correspondence cover to Lima, Peru, franked with two copies of the 10¢ 1869 and a single 2¢ 1869,

quite fresh, realized a healthy \$1,430. An extremely rare 28¢ rate cover to Lisbon, Portugal, forwarded back to England, franked with four copies of the 6¢ 1869 and a 1¢ 1869 on a 3¢ U59 entire, soared to \$4,125. The cover bore numerous transit markings as well as a red B.F. Stevens forwarding oval. Another rare destination cover, to Santo Domingo, Dominican Republic, with a 12¢ 1869 and an F grill 24¢ Washington (#99), used May 13, 1870, reached \$1,650 after spirited bidding. A 2¢ and a 12¢ 1869 tied on cover to Stockholm, paying the short-lived 14¢ NGU direct rate (5/69-7/70), realized \$1,320.

JACQUES C. SCHIFF, Jr., INC.

Elite Auction XII

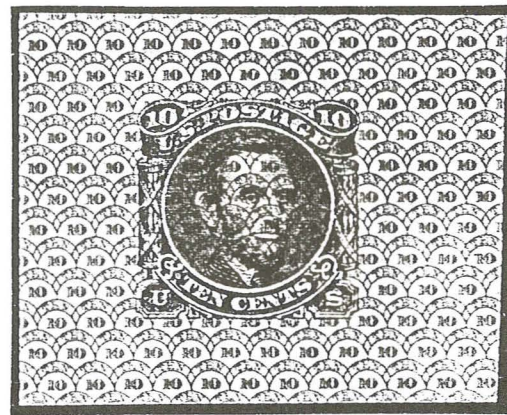
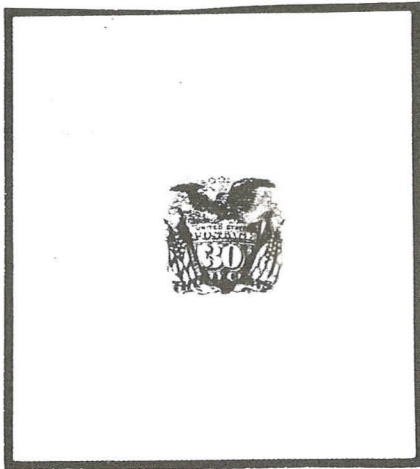
Dec. 1, 1989



This was the sale of the Fred W. Lopez, Sr., Collection of the 1869 Pictorial Issue. Fred, a specialist in essays, is a longtime member of the 1869 PRA, Inc. The sale was held in conjunction with World Stamp Expo '89 in Washington, D.C.

Among the off-cover items was an og block of six of the 15¢ Type II with some perf separations and average-fine centering, which sold for \$2,420 against \$5,700 catalog. A used 15¢ invert with pinhole, creases and tears, realized \$4,840. A used 24¢ invert, sound with red cork cancels and fresh color, did much better at \$11,550 (See photo above). A very rare used block of four of the 90¢ Lincoln (six used blocks recorded) sold for \$9,350 despite its defects. The block is of average centering and each stamp is repaired (filled thins or sealed tears). The color is faded and the black cancels indistinct (See illustration above, right). A f-vf bottom imprint, og block of four of the 2¢ re-issue (#124) sold at \$1,760 (cat: \$2,250).

Among cover lots a rare usage to Athens, Greece (double 23¢ NGU closed mail), franked with a 30¢ 1861, a 10¢ 1867 E grill (#89) and two 3¢ 1869s, realized \$2,350. A strip of three 10¢ 1869s on cover to Beirut, Syria, paid to go by French mail but sent via German mails, sold for a big \$5,280 (Photo above). A large reduced courthouse cover to Salem, Illinois, with the nine times letter rate paid by a 24¢ and a 3¢ 1869, was bid to \$4,620. Another high value cover, a 30¢ double rate to Switzerland from Santa Cruz, CA, paid by the 30¢ 1869, hit \$6,875. The cover, which catalogs \$11,000, has a large repaired tear which passes under a corner of the stamp.



Sale of five lots of "Specimen" overprints showed the specialized nature of the Schiff-Lopez sale. A 10¢ Type A (#116SA) sold for \$484, and a 12¢ Type A (#117SA) with PFC realized a whopping \$880 (cat. \$525). In the proof section a set of Roosevelt small die proofs sold for \$5,060, even though the 24¢ and 30¢ were thinned. A top imprint and plate #22 block of 10 of the 90¢ India proof, fresh and vf, realized \$2,750. And a lovely deep brown and blue large die trial color proof of the 30¢ (#121TC1), vf, sold for \$1,760 (See illustration, above left).

In the large essay section two George T. Jones Grant essays for #112 sold for \$1,265 and \$1,210, respectively. There were 20 lots of the rare safety essays. Several were from the John Juhring Collection. One was a 10¢ blue Lincoln on scarlet safety paper (Brazer #116-Di24), the die being on India paper and having continuous "TEN-10" underprinting (See illustration above). It sold for \$1,650. An envelope essay, 10¢ red violet at upper left on 3¢ pink on white entire, a vf fresh hybrid (116E-D) realized a tidy \$1,320. It will be a long time before so many dozen 1869 essays are sold in one sale.

OUR COMPREHENSIVE 1869 STOCK

*INCLUDES MANY ESSAYS (including rarer ones),
PROOFS, STAMPS (all values unused and used),
AND COVERS.*

WHAT DO YOU NEED?

SELECTIONS GLADLY SENT ON APPROVAL AGAINST SPECIFIC REQUESTS.

MAY WE HEAR FROM YOU ?

Satisfaction or Immediate Refund — Gladly Sent on Approval with References
Installment Payment Terms if Desired — (No Interest or Carrying Charges)

JACK E. MOLESWORTH, INC.

APS
SPA

88 BEACON ST., BOSTON, MASS. 02108
(617) 523-2522

CSA
USPCS

Public Auctions

March 31, 1990

United States Bank Note Issues 1870 - 1888
(including mixed usages with the 1869 Issue)

April 24, 1990

United States Postal History



All illustrated in full color

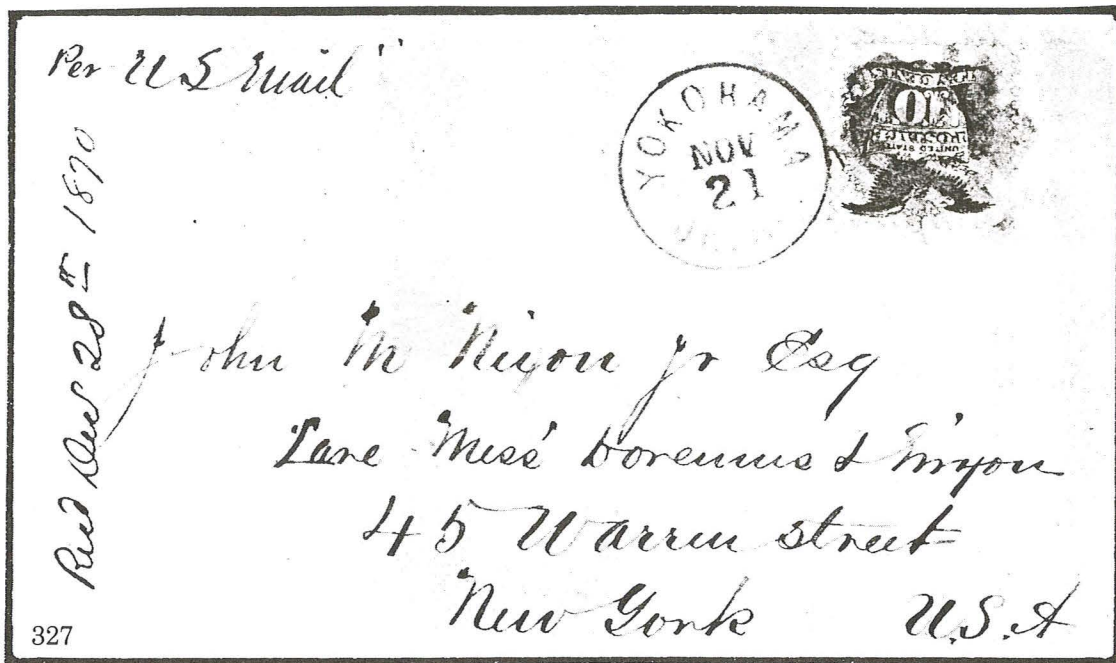
Sent free to all members of the 1869 Pictorial Group



ROBERT G. KAUFMANN
Auction Galleries, Inc.

P.O. Box 1895
540 Colfax Road
Wayne Township
N.J. 07470

LAST LOOK



FROM YOKOHAMA — A 10c 1869 pays transpacific rate 21 Nov. 1870 from Japan to New York City (rec. 28 Dec.) Magenta "San Francisco Paid All Dec. 20" transit marking on reverse. Ex-Krug, Hass.

ARE YOU A COLLECTOR OF U.S. & WORLDWIDE STAMPS & COVERS

"AUCTIONEER'S OF THE
FREDRICK W. LOPEZ, SR.
1869 ISSUE COLLECTION"

We regularly offer Stamps, Revenues & Postal History in our renowned "Especially for Specialists"® Public Auctions.

AN INVITATION TO CONSIGN

Individual stamps, covers or collections for Public Auction or Private Treaty Sale
WE ALSO PURCHASE OUTRIGHT!

Contact us first describing your material. Include your address and phone numbers.

WHAT IS A SCHIFF "ESPECIALLY FOR SPECIALISTS"® AUCTION?

It's an auction designed with YOU in mind, whether you are a buyer or a seller of U.S. or Worldwide stamps. If you do not get our catalogues you are missing out! Send U.S. \$8.50 (U.S. \$15.00 overseas) for a year's subscription to catalogues and prices realized or send U.S. \$1.50 for our next auction catalogue and prices realized (U.S. \$1.00 catalogue only).

Catalogues picked up at our office are complimentary.

Jacques C. Schiff, Jr., Inc.

195 Main Street
Ridgefield Park, New Jersey 07660
201-641-5566 • from NYC 662-2777



Licensed and Bonded Auctioneers • Est. 1947

UNIVERSITY STAMP
UNIVERSITY STAMP
UNIVERSITY STAMP
UNIVERSITY STAMP
UNIVERSITY STAMP
UNIVERSITY STAMP
UNIVERSITY STAMP
UNIVERSITY STAMP
UNIVERSITY STAMP
UNIVERSITY STAMP
UNIVERSITY STAMP
UNIVERSITY STAMP
UNIVERSITY STAMP
UNIVERSITY STAMP
UNIVERSITY STAMP

VENTURA STAMP
VENTURA STAMP
VENTURA STAMP
VENTURA STAMP
VENTURA STAMP
VENTURA STAMP
VENTURA STAMP
VENTURA STAMP
VENTURA STAMP
VENTURA STAMP
VENTURA STAMP
VENTURA STAMP
VENTURA STAMP
VENTURA STAMP
VENTURA STAMP

University Stamp Co., Inc.

"Taking a Scholarly Approach to the Classics"

We are interested in purchasing your 1869 and all other U.S. material; single items, duplicates, entire collections, proofs, essays, multiples, covers, fancy cancels, rarities.

Sell to one of the world's most aggressive and highest paying buyers

Call

(203) 329-7494

24 Hours

or write

University Stamp Co., Inc.

P.O. Box 4784
Stamford, CT 06907



CCNY



1869 PRA

Ventura Stamp Company

Affiliate University Stamp Co., Inc.

Offers you an opportunity to take part in our fabulous quality U.S. net price list; a fully illustrated list with many 1869 items and other U.S. singles, mint, used, fancy cancels, multiples, proofs and covers. To receive your complimentary copy call...

(203) 968-2803

or write

Ventura Stamp Company

P.O. Box 4760
Stamford, CT 06907





Recognized Buyers

Roger G. Weill • Raymond H. Weill
Raymond H. Weill Co.
at 407 Royal Street
in New Orleans