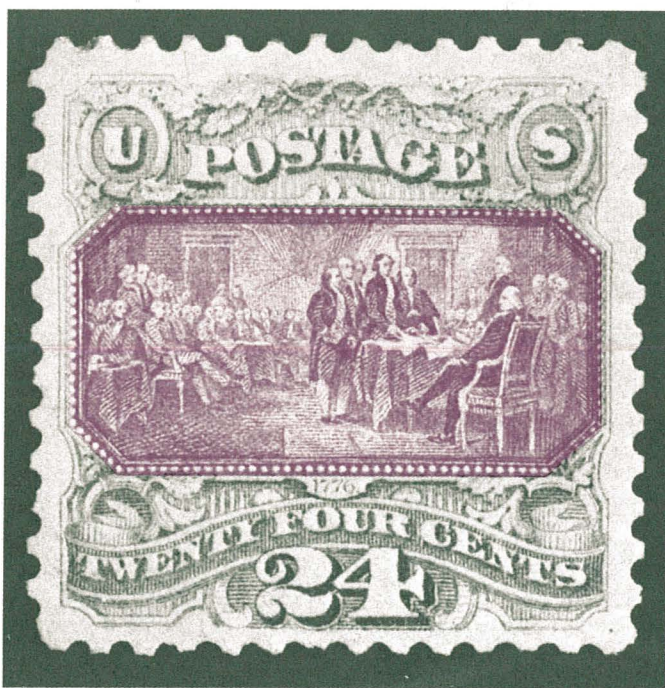


1869 Times

QUARTERLY JOURNAL OF THE U.S. 1869 PICTORIAL RESEARCH ASSOCIATES, INC.

June 1989
Price \$5.00

Whole No. 46
Vol. 13, No. 1



The U.S. 1869 Pictorial Research Associates

... dedicated to the advancement of knowledge through research and study of the 1869 issue.

1869 ISSUE

AS WELL AS ALL CLASSIC
UNITED STATES ISSUES
STAMPS AND COVERS
AVAILABLE

ROBERT A. SIEGEL, INC.

160 EAST 56th ST. - NEW YORK, NY 10022

Buying & Selling
QUALITY U.S.

43 Years Experience as a
Professional Philatelist
Specializing in Classic U.S.

Auction Agent and Consultant.

American Philatelic Brokerages
John Birkinbine II

7225 N. Oracle Road, Tucson, Arizona 85704

(602) 297-3456

WHEN SEEKING THE FINEST IN UNITED STATES PHILATELY:

- UNUSED
- USED
- STAMPLESS
- POSTAL HISTORY
- CLASSICS
- BACK-OF-BOOK
- POSSESSIONS
- REVENUES
- ESSAYS
- PROOFS
- MULTIPLES
- AGENT WORK
- LITERATURE
- INVESTMENT

PHILIP T. BANSNER ALBERT F. CHANG WILLIAM T. CROWE

Send Your Name & Address For A Free Copy Of Our Net Price Catalog



**EMPIRE
GROUP**
INCORPORATED

*Box 2529
West Lawn, Pa. 19609
(215)678-5000*

1869 Times

Quarterly Journal of the
U.S. 1869 Pictorial Research Associates, Inc.
©Copyright 1989, All Rights Reserved
U.S. ISSN 0363-6542

Published by
The U.S. 1869 Pictorial
Research Associates, Inc.
30 Golf Road
Pleasanton, California 94566-9751
Membership in the 1869 P.R.A.
is available upon application.
Membership dues are \$20.00 per year
Initiation fee (paid once) \$2.00



DIRECTORS

BRAD ARCH
144 Hamilton Avenue, Clifton, New Jersey 07011

WILLIAM CROWE
P.O. Box 2090, Danbury, Connecticut 06813

RICHARD CUTTS
1312 Elm Street, Georgetown, Texas 78626

JEFFREY M. FORSTER
10 Almaden Boulevard, Suite 1100, San Jose, CA 95113

KENNETH R. LAURENCE
Immediate Past President
13005 Keystone Terrace, North Miami, Florida 33181

JONATHAN W. ROSE
30 Golf Road, Pleasanton, California 94566-9751

RICHARD SEARING, Ph.D.
P.O. Box 1174, Yorba Linda, California 92686

REX H. (JIM) STEVER
First City Bank Trust FCB 16, Corpus Christi, TX 78477

WILLIAM M. WICKERT
3348 Clubhouse Road, Virginia Beach, Virginia 23452

SOCIETY OFFICERS

JEFFREY M. FORSTER
Chairman of the Board and President
10 Almaden Blvd., Suite 1100, San Jose, CA 95113

RICHARD SEARING, Ph.D.
Vice-President
Box 1174, Yorba Linda, CA 92686

WILLIAM M. WICKERT
Secretary-Treasurer
3348 Clubhouse Road, Virginia Beach, VA 23452

JONATHAN W. ROSE
Editor and Director
30 Golf Road, Pleasanton, CA 94566-9751

KENNETH R. LAURENCE
Immediate Past President and Director
13005 Keystone Terrace, North Miami, Florida 33181

MARGARET L. WUNSCH
Vice-President Emeritus & APS Representative
12 W. Calle Cannon de Faber, Green Valley, AZ 85614

1869 TIMES

June 1989
Price \$5.00

Whole No. 46
Vol. 13, No. 1

EDITORIAL BOARD

Jon Rose, *Editor-In-Chief*
30 Golf Road
Pleasanton, California 94566-9751

CONTRIBUTING EDITORS

Richard M. Searing, Ph.D.
cover census coordinator

Edward Busch
Off-Cover Varieties

Rex H. (Jim) Stever
1869 Specialized Catalog

Brad Arch & Jon Rose
Auction News

PUBLICITY DIRECTOR

Richard Cutts
1312 Elm Street
Georgetown, Texas 78626

PUBLICATIONS SALES DIRECTOR

Brad Arch, 144 Hamilton Avenue
Clifton, New Jersey 07011

ADVERTISING MANAGER

William T. Crowe
P.O. Box 2090, Danbury, Connecticut 06813

Address changes should be sent to the secretary-treasurer; back issue orders and other correspondence to the editor-in-chief. Reports of new 1869 items should be made to the editor-in-chief. Do not send stamps or covers unless requested to do so. Any items sent will be safeguarded, but no liability for loss or damage attaches to any editor or the 1869 Pictorial Research Associates, Inc.

INSIDE

Nine pages of this abbreviated issue (16 pages) are devoted to the 24¢ 1869. This is a broad but thorough look at this lovely stamp. It is the skeletal basis of a portion of the planned 1869 Handbook. In previous issues various writers have examined the 2¢, 3¢ and 15¢ Type II stamps in similar fashion. Each look seems to be a little deeper and a little longer. That is good. *Times 47* will take a close look at the patriotic 30¢ bi-color stamp, known for its large used pieces and its rare invert.

Also in *Times 46* here Bill Wickert, the PRA's hard working secretary-treasurer, updates his 1986 study of earliest usages of the 3¢ 1869 from each state and territory. Please continue the process of improving this listing. There are new ads in *Times 46*. Please read them and support the dealers who support the 1869 PRA, Inc.

— Jon Rose, *Editor*



PRA NEWS

The next PRA membership meeting will be at STaMpsHOW 89, the APS annual meeting at Anaheim, California, Aug. 24-27. The PRA meeting will be Aug. 25 or 26, date to be announced. Then, at World Stamp Expo 89, Washington, D.C., the PRA will gather again, probably on Saturday, Nov. 18. President Jeffrey Forster has been invited to exhibit his 1869 collection, winner of three large gold medals (international).

At Anaheim, the Rev. Mr. Ed Busch, off-cover specialist, will speak at a PRA-sponsored seminar on the subject, "Twenty-Five Ways to Collect the 1869 Issue." Busch's slide show promises to be spectacular!

The *Times* is not getting the editorial support of the membership. Where have you heard that before? It is a serious deficiency. As editor, I will be giving an 1869 cover worth about \$50 to the member who submits the best article to me for the *Times*, prior to Nov. 1, 1989. A hint: have you ever seen an 1869 struck with an orange, ultramarine or a real brown cancel? Despite *Scott's* ridiculous valuations, these colors are rare on all values. The prize is a cover.

CONTENTS: *Times* #46, June 1989

Page 2	The Inside, PRA News and Contents The Editor
Page 3	Early Usage of 3¢ 1869, States & Territories - An Update Wm. M. Wickert
Pages 4-9, 11-13	Twenty-Four Cent 1869 — Handbook of the 1869 Issue Jon Rose, Editor
Pages 14-15	Auction Report Brad Arch & Jon Rose

Advertisements: Robert A. Siegel, Inc.; American Philatelic Brokerages; Empire Group, Inc., inside front cover; Jack E. Molesworth, Inc. (p.3); Christie's Robson Lowe New York (p.10); Jacques C. Schiff, Jr., Inc. (p. 13); Robert G. Kaufmann Auction Galleries, Inc., (p.16); University Stamp Co. & Ventura Stamp Co., inside back cover. Raymond H. Weill Co., back cover.

EARLY USAGES OF THE 3c 1869

By W. M. Wickert PRA #373

Since my early list of 3c 1869 usages was published in **Times 37 (August, 1986)**, I have received information on 19 early date covers. These discoveries are listed below. PRA Member the Rev. Dr. Edward Busch has been particularly helpful in providing many of these citations. Also helping are other PRAers, as well as members of different state postal history societies. Any student who finds an earlier dated cover, please contact me at the address on p.1 of this **Times**.

Origin	Destination	Date	How Date Determined
Mobile, AL	Eutumn, AL	9/17/69	By Mss. Missent 9/23/1869 on front
Waterbury, CT	Abington, CT	8/5/69	Mss docketing ans 6/29/1869
Felton, DE	Branby, CT	8/ 5/69	Mss docketing 1869 date on reverse
Washington, DC	Glasgow, Scotland	7/ 6/69	Liverpool rec. 7/16/69
Augusta, GA	???	9/11/69	Merchant's rec. hdst. front
Bloomington, IL	New York City	5/22/69	SG Merkur 10/25/78 L.210
Louisville, KY	New York City	4/ 27/69	merch. rec. hdst. front, SPB2/6/80 L.1015
N. Berwick, ME	Kennebunk, ME	9/ 3/69	Enclosure dated 9/2/69
Boston, MA	Calais, VT	5/14/69	Enclosure dated 5/14/69
St. Joseph, MO	New York City	4/6/69	Merchant's rec. mark 4/12/69
Wasoja, MN	Winona, MN	7/26/69	CDS year date
Helena, MT Terr.	Williamsport, PA	3/15/??	Probably 1870
Littleton, NH	Northampton, MA	8/13/69	CDS year date
Philadelphia, PA	Elkhart, IN	4/27/69	Docketing ans 5/2/1869
Win ???, SC	Chesterville, SC	3/25/70	Docketed 3/25/1870
Nashville, TN	Boston, MA	5/19/69	Docketed May 22. 1869
Rasburg, VT	????	6/29/69	CDS year date
Utsalady, WT Terr.	???	12/ 4/69	Mss. date part of cancel
Nashotah, WI	???	6/26/69	1869 in circle cancel

OUR COMPREHENSIVE 1869 STOCK

***INCLUDES MANY ESSAYS (including rarer ones),
PROOFS, STAMPS (all values unused and used),
AND COVERS.***

WHAT DO YOU NEED?

SELECTIONS GLADLY SENT ON APPROVAL AGAINST SPECIFIC REQUESTS.

MAY WE HEAR FROM YOU ?

Satisfaction or Immediate Refund — Gladly Sent on Approval with References
Installment Payment Terms if Desired — (No Interest or Carrying Charges)

JACK E. MOLESWORTH, INC.

APS
SPA

88 BEACON ST BOSTON, MASS 02108
(617) 523-2522

CSA
USPCS

HANDBOOK OF THE 1869 ISSUE AND THE 1875-1880 RE-ISSUES

TWENTY-FOUR CENT 1869

By Jonathan W. Rose

*Editor-in-Chief
1869 Publications*



The 24¢ 1869 is the second most glamorous and the third rarest of the 1869 Issue stamps. The most desirable item is the 90¢ Lincoln, if for no other reason than its scarcity. Many specialists feel, however, that their favorite design is the 24¢ bi-color.

While the 24¢ stamp was issued in larger quantities than the Type I 15¢, the 24¢ carries a far higher catalog value. This is due probably both to demand and respective survival rates. However, there are not enough of either stamp, Type I 15¢ or 24¢ green and violet, in choice condition to go around. Such a choice used copy of the 24¢ is illustrated above. Centering, lightness of cancellation, color and perf quality are all factors.

The vignette design by James Smillie, National Bank Note Co. chief engraver, is a rendition of John Trumbull's painting, "The Signing of the Declaration of Independence." The 46 delegates who signed their names at Philadelphia in July, 1776, are all depicted in marvelous miniaturization in this engraving. Jefferson, Franklin, John Hancock, John Adams, Robert Livingston and Roger Sherman are all recognizable on the stamp. They are grouped around the table at the right. Trumbull's painting hangs in the Yale Gallery of Art. It also served as the model for the designs of numerous private and national bank notes (currency).

In block form the 24¢ stamp is a rarity. It is the second rarest, ranking behind the very rare Type I 15¢ stamp. There are only eight blocks of the 24¢ stamp. Of these, one is an unused, og block of nine (see illustration

next page), another is the used invert block; and the remaining are blocks of four, three unused and four used. All these are illustrated in this issue of the *Times*. If readers know of other blocks, please write me at the *Times*.

The earliest known usage on cover is one dated April 7, 1869, New York City via Southampton, to Shanghai, with the 10¢ 1869 (See *Chronicle* 87:174). The Hirzel cover in Bern with five copies of the 24¢ 1869 and a 12¢ 1869, paying the six times 22¢ rate to Lima, Peru, represents the most copies known used on one cover. See p. 8 in this *Times*. A March, 1874, Kentucky court house cover is known showing use of an invert copy of the 24¢, almost a miracle of survival. It sold for \$82,500 five years ago.

The number of 24¢ stamps with inverted frames still extant is believed to be about 90-100, from two or three sheets. Four of these are unused. It is the second rarest used and unused of the three invert values.

In the listings below I have attempted to rank the various items by value. Most common are ranked (1); scarce or less common (2); very scarce to rare, with perhaps 10-50 copies or so known (3); and the rarest items are classed (4). For a few very rare items or especially noteworthy with number classifications, a plus (+) has been added. Such world class items as the invert block, the cover with the inverted 24¢; and a few proofs and essays are classified as 4+. Actually, any items of which five or less examples exist are of topmost rarity, but some command more dollars than others due to publicity and collector popularity.



Some students believe that the used invert pair (above) was once attached to the Ishikawa block of four (bottom). Different killers show that each piece was used at a different time.



UNUSED BLOCKS — These are the four unused blocks known to the 1869 PRA, Inc. at this time. At top the unused block of nine, ex-Worthington, Lozier, Sinkler, Gibson, West, Weill, off-center and with a few thins, yet the largest 24c piece, now in a West Coast collection. At left the Wm. L. Moody III block, sold by Harmers in 1950; right, the P. G. Rust block, sold in 1956 by Harmers; bottom, the ex-Grunin, now Ishikawa block.



USED BLOCKS — These are the four normal used blocks known to the PRA. At top the least desirable, but rich-colored, part of an Eastern collection; left, the block sold in July, 1981, by Robert A. Siegel for almost \$21,000; right, a superior used block sold by Siegel in 1984 for under \$9,000 to a West Coast collector; at bottom, the best, ex-Capt. Barrett G. Hindes, sold by Harmers in 1968.

(Top Photo by J. Rose)

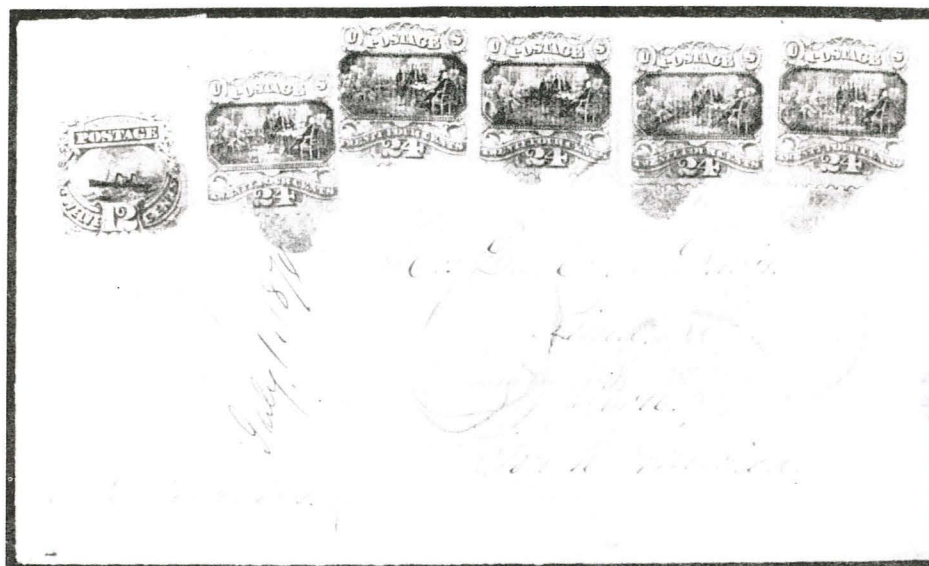
THE 24-CENT 1869 STAMP

I SHADES: Green and Violet
Bluish Green & Violet

II PLATE NUMBERS: 20, Frame 20, 24, Vignette

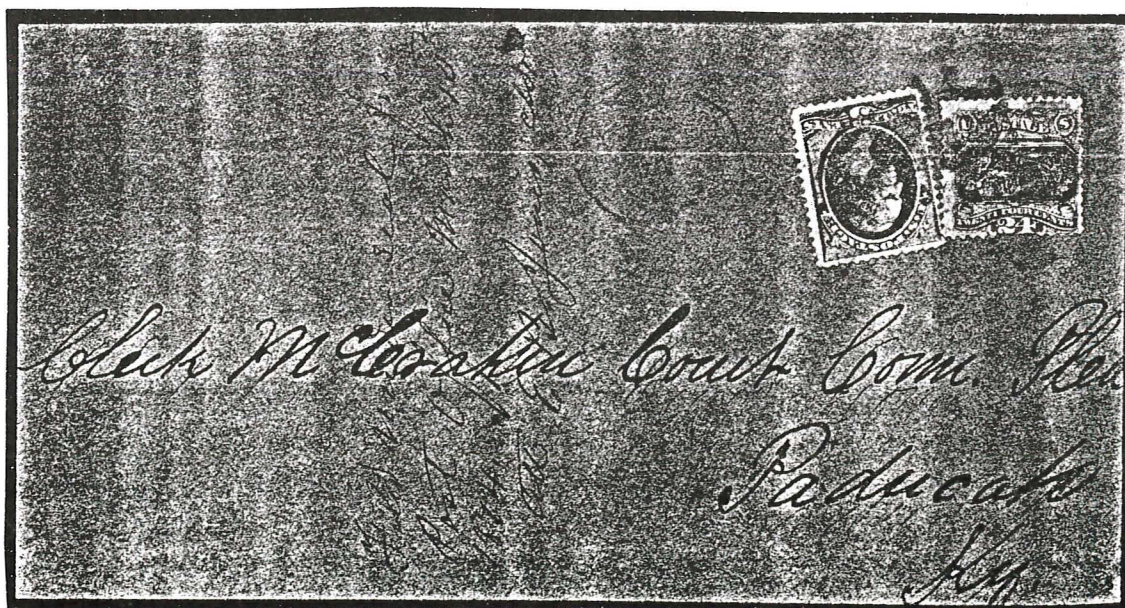
III PRINTING VARIETIES:

Center Inverted (4)
Imperforate (4)
Center inverted, imperforate, no grill, unused (Unissued, trial, unique, 4+)



THE CREAM — Above, the well-known quintuple 24¢ usage Davis correspondence cover, June, 1870, showing six times 22¢ rate to Lima, Peru (Hirzel Coll., PTT Museum, Bern, Switzerland).

Below, unique usage of the 24¢ invert on 9x3¢ court house cover, 3/74, New Orleans to Paducah, Ky. Two PF certificates, 1960 and 1988, opine that the invert belongs on this cover. It was, however, removed and hinged back in place.



III PRINTING VARIETIES (cont.):

Plate Positions:

Plate # in margin (3+)

Imprint in margin (3)

Grills:

Split grill (2)

Double grill (known used, 2+)

Without grill, og (3)



CANCELLATIONS—*Left:* Rare blue grid cancel. *Right:* Black star, NY foreign mail office. Green cancels are very rare, blue rare and red and black fairly common, especially the latter.

THE 24-CENT 1869 STAMP

IV MULTIPLES

Unused

Single (1)
 Pair (2+)
 Strip of three (unused, 3+); Used (3)
 Block of four (4)
 Block of nine (4+)
 Any margin block with plate number and/or imprint (4+)

Used

Single (1)
 Pair (2)
 Strip of three (3)
 Block of four (4)

Used on Cover

Pair (3+)
 Strip of three (3+)

V CANCELLATIONS

Colors: Black (1)
 Red (2)
 Blue (3)
 Green (4+)

(continued on page 11)

THE
WEILL
BROTHERS'
STOCK



Christie's is pleased to announce the series of auctions during the next two years, which will disperse the entire Weill Brothers' Stock of stamps and covers.

All collectors of classic United States are encouraged to subscribe to Christie's New York stamp sale catalogues now, to ensure receipt of this important series of auctions.

Please send your check or money order for \$30 to Christie's, 502 Park Avenue, New York, NY 10022, to receive a one year subscription to New York sale catalogues.

Illustrated above:
The magnificent 1869 90c Re-issue imprint and plate number block of twelve, to be offered at public auction next fall.



CHRISTIE'S
ROBSON LOWE
NEW YORK

THE 24-CENT 1869 STAMP

V CANCELLATIONS (cont.)

Town CDS: Black Town (2); Red Town (2+)

Paid (2+); Paid All (2+)

Steamship (3)

Supplementary Mail Type A (3+)

Various "fancy" strikes: Hollow Star, Solid Star, Red Leaf, Blue Leaf, etc.

Generally found on cover

London receiver (2+)

Registered CDS (San Francisco, New Orleans) (3-)

Insufficiently Paid (3)

NY Paid All (2+)

NY PAID + numeral (2+)

Manuscript

ON COVER

VI

Single (3)

Pair (4)

Strip of three (4)

Domestic use with 1869 stamps: 1¢ (4+); 2¢ (4); 3¢ (4); 6¢ (4+); 10¢ (4); 12¢ (4); 15¢ Type I (unknown);
15¢ Type II (4+); 30¢ (4+); 90¢ (incomplete, 4+)

Used with other U.S. stamps: National Bank Note Co. ungrilled, 1870-73 (4).

Mixed frankings with foreign stamps: None known this date (6/89).

THE 24-CENT 1869 STAMP

VI ON COVER (cont.):

Used with postal stationery (4, 1 known with U15)

VII ESSAYS (Brazer numbers):

Stamp design but smaller numerals (Vignette engraver, Jas. Smillie;
Frame engraver, Douglas S. Ronaldson)

120E-C aa Incomplete Die (Brazer, Quarterman ed., 1977, p. 80)

120E-C a Same, but complete & with 8mm bands of shaded colored lines 31mm overprinted above and below vignette, essays of black or org. brown with bands of various colors

120E-C b Die on India (black, scarlet, dark red brown, blue, violet)

c-h Plate essays on various colored paper

i Same, perf. & gummed, black

j on cardboard, imperf., black

120E-D Bi-colored die impressions of stamp design frame w. vignette printed separately & mounted in place. On India on card etc.

All of the above essays and varieties are rare to very rare (\$250-\$600)

VIII PROOFS

120P1 Large Die proof (3+) rare

120P2 Small Roosevelt die proof 1904, 85 issued, (3)

120P2a Small Pan Pacific die proof, 3-5 known, very rare (4+)

120P3 India plate proof (2) 120P4 Plate proof on cardboard (2-)

Plate proofs are found in blocks of four, pl. bl. of 8, India, (3).

120Pa Center inverted, 100 issued, (4)

120Pa Block of four (4)

120Pa Pl. block of eight (4+)

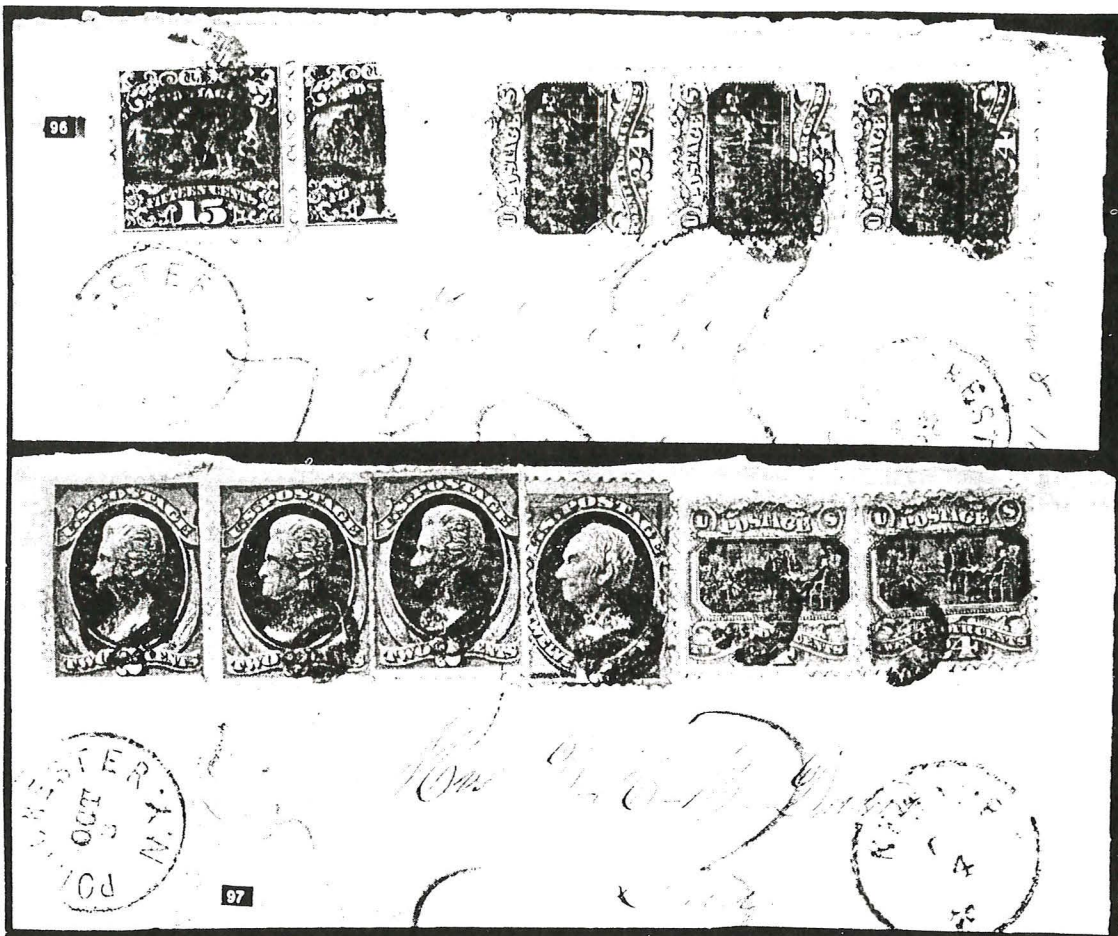
Various trial color proofs exist;

120TC 24¢ black, rare (4); Also,

120P3a var., 24¢ green & red violet, (3+)

IX SPECIMENS:

120S A 12mm long "Specimen" (4); Without grill (4+)



DAVIS COVERS—*Top:* Faulty but rare use of a vertical strip of three 24c plus two 15c Type II pay triple 34c rate 12/69; *Below:* combination of two 24c 1869s plus 18c in Bank Notes pay reduced 3x22c rate 10/70. Both in the Harmer, Rooke & Co. May, 1961 sale of Port Chester (Davis) covers to Peru.

DO YOU COLLECT U.S. OR WORLDWIDE STAMPS AND POSTAL HISTORY? ARE YOU A SPECIALIST?



WHAT IS A SCHIFF "ESPECIALLY FOR SPECIALISTS"® AUCTION?

It's an auction designed with YOU in mind. Whether you are a buyer or a seller—each specialized area of collecting is listed in a separate section, making it easier for BUYERS to locate lots of particular interest and for SELLERS to realize maximum exposure for their material.



If you do not get our catalogues you are missing out! Send \$8.50 (\$15.00* overseas) for a full year's subscription to Schiff auction catalogues and prices realized or send \$1.00 (\$1.50 with prices realized) for a Sample copy of our next sale. If picked up at our office the catalogue is complimentary.

We invite you to consign individual stamps or covers, entire collections or estates—for unreserved Public Auction or Private Treaty Sale. WE ALSO PURCHASE OUTRIGHT! Contact us first, describing your material. Include your address and telephone number(s).



Jacques C. Schiff, Jr., Inc.

195 MAIN STREET
RIDGEFIELD PARK, NEW JERSEY 07660
Phones: (201) 641-5566 — From N.Y.C. 662-2777
Licensed & Bonded Auctioneers—Established 1947



OFFICIAL AUCTIONEER
WORLD STAMP EXPO '89™
United States Postal Service
Nov. 17 — 20 and
Nov. 24 — Dec. 3, 1989
Washington Convention Center
Washington, DC

AUCTION REPORT

Editor's Note: All prices realized include 10% buyer's premium

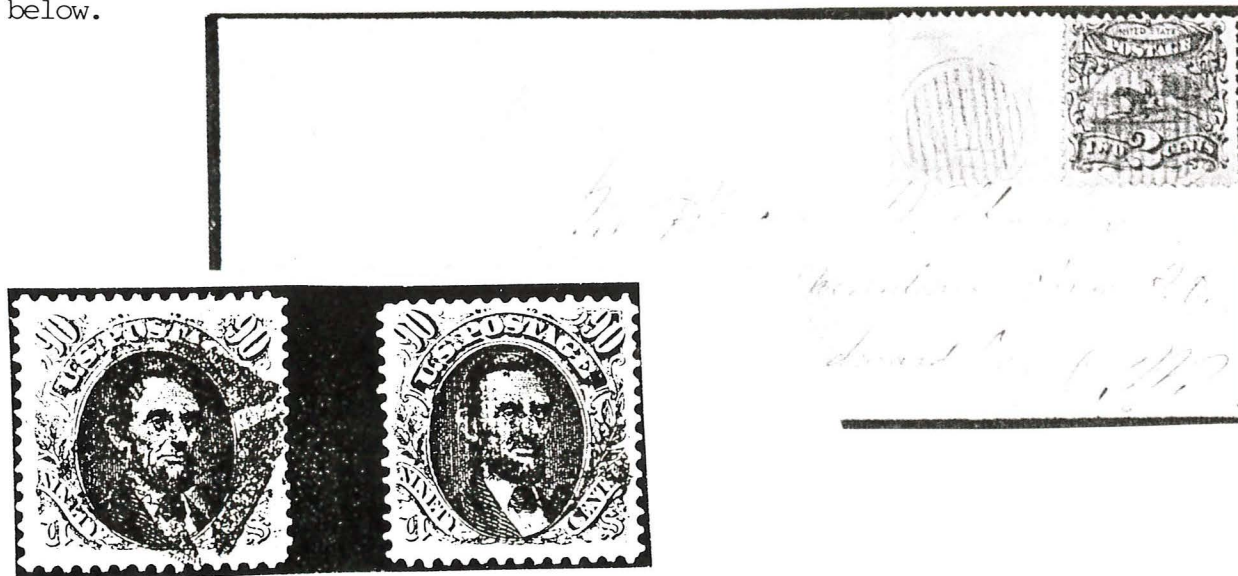


HARMER of NEW YORK INC. SALE 2381 Dale/Lichtenstein US April 19, 1989

This was the lead-off sale in Harmer's disposition of the legendary holdings of Alfred Lichtenstein and his daughter, Louise Boyd Dale. Actually, these sales began more than 20 years ago. The British North American material, for example, was fabulous. This April's sale of U.S. material included 1869s on and off cover as well as re-issues, mostly unused.

A large-margined, og copy of the Type I 15c (Sc.#118) went for \$1,870, slightly better than catalog. A rare, part og copy of this stamp, **without grill**, went for \$4,675. Obviously, **Scott** is lagging on this one with catalog at \$3,500. The copy offered was choice, however. A lovely but pale shade of the 30c (#121) with red NY CDS sold extra high at \$880. The stamp has extra fine centering, but time has faded the delicate inks. And a fine plus unused (with og) copy of the 90c Lincoln sold for a reasonable \$3,300. Copies with original gum are very scarce. The two 15c stamps, the 30c used and this 90c unused are all illustrated above.

On cover material included a 10c sent from Shanghai via San Francisco to Iowa, ex-Shierson, selling for \$1,430; a vertical pair from NYC to Cuba, \$578, nice postal history but worn cover; and a 10c plus 2c from Boston to Prince Edward Island, choice 3/31 usage from Boston, no year date given, but presumably 1870, double 6c rate, \$1,650 (very steep, but very rare). This item is illustrated below.



ROBERT A. SIEGEL AUCTION GALLERIES, INC. 1989 RARITIES
Sale 708 April 15, 1989



224



226



227



225

This was Siegel's 26th annual rarity sale, an event which began in 1964. The gross realization was \$2.84 million for 611 lots, of which 478 were U.S. and colonies, a Siegel speciality. There were 44 lots of 1869s and re-issues. Some highlights of prices realized follow:

A 1c Franklin (#112) with double grill, one quadruple split, unlisted in *Scott*, sold for \$770 to a PRA collector; a complete pane of the 3c (150 stamps, pl. 26, f-vf), went for \$22,000, about the going price for this rarity, of which about half a dozen exist. A bottom number and pl. block of 20 of the Type 2 15c (Pl.23, og, off-center but unique), sold at \$22,000, the same as the pane of the 3c stamp, noted above. A well-centered 15c invert with strong grill impression sold for \$12,100 to the book. The set of four invert plate proofs on card (100 issued) sold for a reasonable \$11,000 to a dealer.

Some impressive prices were paid for 30c stamps. A large-margined, unused 30c with fresh colors broke over catalog at \$3,080. A bottom right sheet corner margin, og, copy (ex-William Moody Coll.), PFC, sold even better at \$4,400. Both of these unused 30c stamps are pictured above. Two of the better used copies of the 30c invert (less than 40 known today) sold at \$22,000 and \$20,900. These stamps usually have defects, but these had only a corner perf. crease and nibbled perfs at bottom, respectively. Each, however, was rather heavily cancelled, another common occurrence. Consider that these classic rarities are much rarer than the #C3a air mail stamp, and at a quarter of the price or better are bargains today. Both of these rarities are also illustrated above. One final item: the unique 1c brown orange re-issue (#133a) in a bottom pane of 80 with imprint and plate number (#33), realized \$20,900, well below catalog.

STEVE IVY PHILATELIC AUCTIONS, Inc. 1989 ASDA INTERPEX SALE
Mar. 17-19, 1989 New York City

Ivy and Charles Shreve sold many choice 1869 items here. I was intrigued by the prices realized for choice, used copies of the 90c bi-color Lincoln. There are not enough sound, better copies to satisfy the advanced collector. Prices for eight copies ranged down from \$2,970, through \$1,375 (These two copies are shown on the previous page, at the bottom), all the way down to \$578 for the "worst" copy with small thin spot and corner crease.

AUTOGRAPHS AND HISTORICAL DOCUMENTS AUCTION SEPTEMBER, 1989

Dear Sister, *Phila. April 27. 1789*

I have just received your kind Letter of the 2^d Instant. I wish you would also acknowledge, when you write, the Receipt of those that have come to your hands since you wrote last. By that means I should have the Satisfaction of knowing that they have not mis-carried. You mention nothing of a Letter from me dated Feb. 22. which went by the Post. As you had inform'd me the Books did not sell, and I fear'd the long and severe Winter might have frustrated you towards the End, I desired you to draw on me for Forty Dollars. As such Bill having appear'd I apprehend you may not have receiv'd the Letter. I send enclos'd the Copy of it taken in the Post, and desire you will to draw if you have Occasion. I wrote about the same time to our friend Mr. Greene a long Letter, I wish she may have receiv'd it. I never see your Newspapers, so know not what is meant by Laco whom you mention. My Love to your Daughter & to my great grand Niece. What Age is she? I am ever your affectionate Brother B. Franklin,

This Benjamin Franklin letter realized a solid \$15,500.00 + 10% in our March, 1989 auction.



WORLD STAMP EXPO '89™

United States Postal Service
Nov. 17 — Dec. 3, 1989
Washington Convention Center
Washington, DC

We will also be participating at the World Stamp Expo '89 where we will have a Superbooth. Do visit with us.



ROBERT G. KAUFMANN
Auction Galleries, Inc.



QUALIFIED AUCTIONEER

P.O. Box 1895
540 Colfax Road
Wayne Township
N.J. 07470

VENTURA STAMP

“Taking a Scholarly Approach to the Classics”

Sell to one of the world's
most aggressive and
highest paying buyers

24 Hours

or write
University Stamp Co., Inc.
P.O. Box 4784
Stamford, CT 06907



1869 PRA

Affiliate University Stamp Co., Inc.

Offers you an opportunity to take part in our fabulous quality U.S. net price list; a fully illustrated list with many 1869 items and other U.S. singles, mint, used, fancy cancels, multiples, proofs and covers. To receive your complimentary copy call...

or write
Ventura Stamp Company
P.O. Box 4760
Stamford, CT 06907





Recognized Buyers

Roger G. Weill • Raymond H. Weill

Raymond H. Weill Co.

*at 407 Royal Street
in New Orleans*