

1869 Times

QUARTERLY JOURNAL OF THE U.S. 1869 PICTORIAL RESEARCH ASSOCIATES, INC.

February 1989
Price \$5.00

Whole No. 45
Vol 12, No. 4



A pair of 2c 1869s and pair of 15c Type II's pay the 34c rate on this little Davis correspondence cover to Lima, Peru, Dec. 2, 1869. An in-depth look at the 15c Type II can be found inside.

The U.S. 1869 Pictorial Research Associates

... dedicated to the advancement of knowledge through research and study of the 1869 issue.

1869 ISSUE

•

AS WELL AS ALL CLASSIC
UNITED STATES ISSUES
STAMPS AND COVERS
AVAILABLE

•

ROBERT A. SIEGEL, INC.

160 EAST 56th ST. - NEW YORK, NY 10022

Buying & Selling
QUALITY U.S.

42 Years Experience as a
Professional Philatelist
Specializing in Classic U.S.

Auction Agent and Consultant.

American Philatelic Brokerages
John Birkinbine II

7225 N. Oracle Road, Tucson, Arizona 85704

(602) 297-3456

WHEN SEEKING THE FINEST IN UNITED STATES PHILATELY:

- | | |
|------------------|--------------|
| ● UNUSED | ● REVENUES |
| ● USED | ● ESSAYS |
| ● STAMPLESS | ● PROOFS |
| ● POSTAL HISTORY | ● MULTIPLES |
| ● CLASSICS | ● AGENT WORK |
| ● BACK-OF-BOOK | ● LITERATURE |
| ● POSSESSIONS | ● INVESTMENT |

PHILIP T. BANSNER ALBERT F. CHANG WILLIAM T. CROWE

Send Your Name & Address For A Free Copy Of Our Net Price Catalog



**EMPIRE
GROUP**
INCORPORATED

*Box 2529
West Lawn, Pa. 19609
(215)678-5000*

1869 Times

Quarterly Journal of the
U.S. 1869 Pictorial Research Associates, Inc.
©Copyright 1989, All Rights Reserved
U.S. ISSN 0363-6542

Published by
The U.S. 1869 Pictorial
Research Associates, Inc.
30 Golf Road
Pleasanton, California 94566-9751
Membership in the 1869 P.R.A.
is available upon application.
Membership dues are \$20.00 per year
Initiation fee (paid once) \$2.00



DIRECTORS

BRAD ARCH
144 Hamilton Avenue, Clifton, New Jersey 07011

WILLIAM CROWE
P.O. Box 2090, Danbury, Connecticut 06813

RICHARD CUTTS
1312 Elm Street, Georgetown, Texas 78626

JEFFREY M. FORSTER
99 Almaden Boulevard, Suite 400, San Jose, CA 95113

KENNETH R. LAURENCE
Immediate Past President
13005 Keystone Terrace, North Miami, Florida 33181

JONATHAN W. ROSE
30 Golf Road, Pleasanton, California 94566-9751

RICHARD SEARING, Ph.D.
P.O. Box 1174, Yorba Linda, California 92686

REX H. (JIM) STEVER
First City Bank Trust FCB 16, Corpus Christi, TX 78477

WILLIAM M. WICKERT
3348 Clubhouse Road, Virginia Beach, Virginia 23452

SOCIETY OFFICERS

JEFFREY M. FORSTER
Chairman of the Board and President
99 Almaden Blvd., Suite 400, San Jose, CA 95113

RICHARD SEARING, Ph.D.
Vice-President
Box 1174, Yorba Linda, CA 92686

WILLIAM M. WICKERT
Secretary-Treasurer
3348 Clubhouse Road, Virginia Beach, VA 23452

JONATHAN W. ROSE
Editor and Director
30 Golf Road, Pleasanton, CA 94566-9751

KENNETH R. LAURENCE
Immediate Past President and Director
13005 Keystone Terrace, North Miami, Florida 33181

MARGARET L. WUNSCH
Vice-President Emeritus & APS Representative
12 W. Calle Cannon de Faber, Green Valley, AZ 85614

1869 TIMES

February 1989 Whole No. 45
Price \$5.00 Vol 12, No. 4

EDITORIAL BOARD

Jon Rose, *Editor-In-Chief*
30 Golf Road
Pleasanton, California 94566-9751

CONTRIBUTING EDITORS

Richard M. Searing, Ph.D.
cover census coordinator

Edward Busch
Off-Cover Varieties

Rex H. (Jim) Stever
1869 Specialized Catalog

Brad Arch & Jon Rose
Auction News

PUBLICITY DIRECTOR

Richard Cutts
1312 Elm Street
Georgetown, Texas 78626

PUBLICATIONS SALES DIRECTOR

Brad Arch, 144 Hamilton Avenue
Clifton, New Jersey 07011

ADVERTISING MANAGER

William T. Crowe
P.O. Box 2090, Danbury, Connecticut 06813

Address changes should be sent to the secretary-treasurer; back issue orders and other correspondence to the editor-in-chief. Reports of new 1869 items should be made to the editor-in-chief. Do not send stamps or covers unless requested to do so. Any items sent will be safeguarded, but no liability for loss or damage attaches to any editor or the 1869 Pictorial Research Associates, Inc.

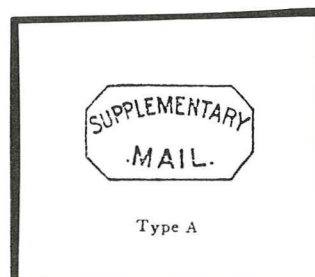
ON THE COVER

The neat item pictured on the cover of this issue of the *1869 Times* is one of the dozens of Port Chester find covers to Lima, Peru, uncovered three decades ago. This one, sold by David Feldman, S.A., in December, 1982, was not included in the now well-known Harmer, Rooke & Co., Inc., sale of May 9-12, 1961. This sale, which included nine 24¢ 1869 covers to Peru, among the 45 Davis family covers, several dozen of which did not sell, was followed by another Harmer Rooke sale in 1966. See: "The Port Chester Find: A Great Moment in U.S. Philately" in *The 1982 Register*, in which the late Elliott Coulter tells part of the story.

INSIDE

By JON ROSE

Editor



Among the new covers pictured herein, is a double 3¢ 1869 cover to Liverpool, England, (see p. 13), which shows a partial strike of the rare Supplementary Mail Type A handstamp, pictured above in its complete form. *Scott* does not list the 3¢ 1869 with this marking—yet.

Richard Cutts, a computer enthusiast and the PRA PR man, presents part one of his listing of 3¢ 1869 covers (pp. 16-19). The Rev. Mr. Ed Busch, a stamp and plating specialist, offers an in-depth look at the 15¢ Type II for the planned 1869 specialized handbook. See pp. 5-10. The 24¢ value is planned for *Times* 46. It's going to be my project, but I need help. Information on multiples, plate varieties, new covers (See p. 23 this issue), inverts and quantities issued is needed.

CONTENTS: *Times* #45, February 1989

Page 2	The Cover and Contents.....	The Editor-in-Chief
Page 3	PRA Board Meeting — Oct. 21, 1988 & The Editor's Desk	The Editor
Page 4	From the Editor's Desk, cont	The Editor
Pages 5-10	Fifteen Cent Type II — Handbook of the 1869 Issue	The Rev. Ed Busch
Page 11-12	The 1869 Issue Used in North Carolina	Wm. M. Wickert
Page 13-14	Rare Rate Markings on 1869 Covers (Pictorial)	Contributors
Pages 16-19	Special Census of 3¢ 1869 Covers	Richard Cutts
Pages 20-21	1869 Cover Census Update	The Editor
Pages 22	Auction Report	Brad Arch & Jon Rose
Page 23	Last Looks (Pictorial)	The Editor

Advertisements: Jacques C. Schiff, Jr. (p. 10); Jack E. Molesworth (p.14); 1869 Cover Census Book (p. 15); Christie's Robson Lowe New York (p. 21); 1869 PRA Literature (p. 24); University Stamp Co. & Ventura Stamp Co., now on inside back cover.

PRA Board of Directors Meeting: Oct. 21, 1988

The board of directors of the 1869 PRA, Inc. met on Oct. 21, 1988 at the ASDA National Postage Stamp Show, Madison Square Garden, New York City.

Actions Taken:

1. Certain board members were to contact the following members to see if they would be willing to serve on the board: Dealers Keith Harmer and Richard Frajola and Member the Rev. Mr. Ed Busch, of La Verne, CA. The Rev. Mr. Busch subsequently consented to serve on the board when an opening occurs, this decision being tentative and subject to board approval.
2. Bill Wickert, secretary, and Brad Arch, publications sales director, were instructed to seek less expensive (but equal to the present quality) printers for production of the *1869 Times* (Subsequently, Wickert drew a blank with Virginia firms, and Arch contacted Raven Press, of Lake Oswego, OR).
3. Editor Rose was granted a one-time fee of \$100, chiefly to cover travel and postage expenses.
4. The board approved the sale to William Crowe, PRA director and stamp and literature dealer, of the 500 unbound copies of the 1986 Cover Census book for \$2,600. The funds will pay the total bill still due Steve Karbo, printer of the award-winning cover book. Crowe agreed not to bind the 500 sets until all the PRA's bound census books are sold, the number remaining being about 200-225, of 500 printed.
5. The board will consider bringing the *1869 Times Index* up to date. The index has been compiled by Dr. Michael Rosove (PRA 325), Santa Monica, CA, for Issues #1-21, inclusive. The next index will be for Issues #22-42, inclusive, and bring it to June, 1988.
6. Secretary Wickert will inquire as to the cost of printing stationery for use of 1869 board members.
7. The next PRA board meeting will be held at WESTPEX, April 21-23, 1989 at the Cathedral Hill Hotel, Geary and Van Ness, San Francisco, CA.

FROM THE EDITOR'S DESK

As editor and PRA director I would like to thank all members who have already paid their 1869 PRA dues, especially those who made donations. The PRA has published five books, including three hardbound volumes; and a small but dedicated group is working on a sixth, the "Specialized Handbook of the 1869 Issue and Re-Issues," as it is tentatively called.

The *1869 Times* is back on schedule, and hopefully we will have at least three and possibly four issues in 1989. Finances are better, but worthwhile editorial contributions to the quarterly journal are still few indeed. I recently received a letter from a supporter of the PRA, who is a noted philatelic student. He states that a great

deal of research remains to be done on the 1869s. For example, he points to the lack of a written, published record of shipments of the 1869 stamps to various post offices. Source records are available in Washington from which these figures may be gleaned.

Other areas of research suggested:

1. The types of killer cancels used by major cities, Mar. 1, 1869-Jan. 1, 1871, the approximate dates of usage of 1869s.
2. A study of the auxiliary markings associated with the 1869 period. (See Jim Stever's "Auxiliary Markings Found on 3¢ Domestic Covers" in *Times* 32, pp. 3-9.)
3. A better census of 6¢ 1869 covers (and the 12¢, I might add). See the 1986 Cover Census book.
4. Plating the various issues. (The student proposing is working on plating the 90¢ 1869).
5. Plating the invert (This probably requires plating the normal 15¢, 24¢ and 30¢ 1869s), to determine how many sheets of each value were issued and reached collectors.
6. Census of important multiples of each value. (This data is to be published in the 1869 handbook).
7. Information on important finds of 1869 material: a la Shaw, Juhring and Port Chester.
8. A study of shades of the 3¢ 1869 (a reported 25 different exist). Publish a color chart of these, perhaps with the help of an auction house.
9. Precise measurements of vignettes of the 15¢ and 24¢ stamps. Are examples known from the left pane of #118 and can they be identified positively?

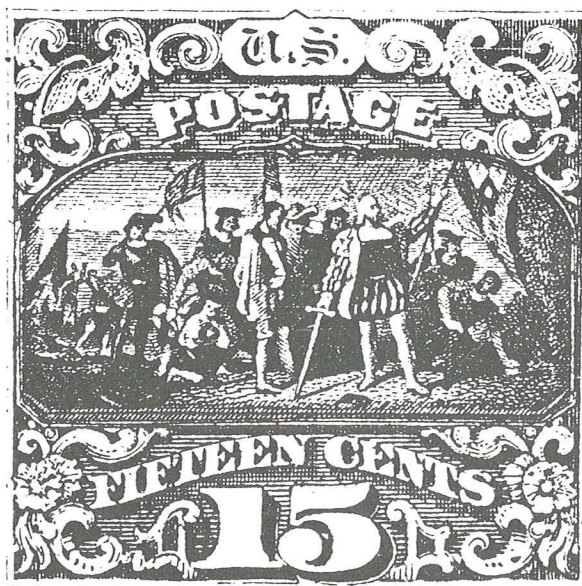
I am curious how many readers of this *Times* are interested in stamps just as much as in covers, i.e., postal history and stamp usage. Does plating and the study of printing varieties, shades, perforation oddities, paper, grills and the like hold its fascination for you?

There are some 1869 specialists who are chiefly concerned with covers and, perhaps, cancellations, to the virtual exclusion of the stamps themselves. I think that this is not right. What do you think?

HANDBOOK OF THE 1869 ISSUE AND THE 1875-1880 RE-ISSUES

FIFTEEN CENT TYPE II 1869

By the Rev. Edward Busch, PRA 262
& Jon Rose, Editor



Introduction

The listings which follow are not the last word in knowledge of this sometimes difficult stamp. There are three types of the 15¢ stamp, and we do not have the full story about any of them. For example, plate numbers. We are tentatively assigning blue vignette No. 23 and red brown frame numbers 19 & 31 to the Type II 15¢, Scott's #119. We know the blue 23 and imprint are found at the bottom of sheets. We believe the brown 31 is found at the top. The other frame number, 19, would logically be found at the top of the sheet, but we don't have an example to cite.

This listing includes for the first time sections for essays, proofs, and specimen overprints. The essays, some of the proofs and, especially, the specimens are very scarce to very rare. For example, copies of the Pan Pacific proof and essay may be counted on one hand. An experienced dealer with an advertisement in this issue, wrote to say that 1869 specimens are "very rare."

For the first time we have attempted to rank by value designations most of the subcategories. The most common are ranked (1); scarce or less common (2); very scarce to rare, with perhaps 10-50 or so examples, (3); and the rarest items, (4). For a few special items, we have added a (+). For example, the invert with double transfer and invert on cover rate (4+), as well as the Pan Pacific special printing essay and proof.

In the 1920s there existed an unused block of 50 Type IIs, but its whereabouts is unknown today. There is a block of 20 (unused) from the bottom right corner of the sheet, with blue plate No.23 and full imprint. This fresh, og block, centered high and to the right, was sold as lot 105 in the Robert A. Siegel Rarities of the World sale (New York City, 1977) for \$12,000, a seeming bargain today with blocks of four going for more than \$4,000. Illustrated below is an og, unused block of six (3x2), centered left, otherwise fresh and sound.

The earliest known cover with the 15¢ Type II is a May 23, 1869 example, a typical 15¢ per quarter ounce rating to France. Below, the on-cover varieties listed are fewer than those of the 3¢ value in **Times 44**. But the list of 15¢ Type II cancellations is quite extensive.



The 15¢ Type II 1869

Scott #119

I SHADES: Red Brown & Dark Blue
Dark Red Brown & Dark Blue
Red Brown & Blue

II PLATE NUMBERS: 23 (Vignette)
19,31 (Frame, red brown)

III PRINTING VARIETIES:
Grills: Split (2)
Double (2)
Double & Split (3)

Plate Positions:
Pl. Dot in Margin (3)
Two or Three dots above period at "U" (2)
Plate # in margin (3)
Imprint in margin (3)

Paper: Preprinting paper fold in
either frame or vignette (3)

III PRINTING VARIETIES (cont.):

Double Transfer(2)
Plate Crack (3)
Plate Scratch (3)
Center Misaligned (2)
CENTER INVERTED (119b, actually the frame is inverted):
Off cover (4)
On cover (4+,unique)
Center double,one inverted (4+)

IV MULTIPLES:

Unused- Single (1)
Pair (2)
Strip of three (3)
Block of four (3+)
Block of Six (3+)
Block of nine (4)
Block of 20 (4, 5x4)
(Block of 50 known in the 1920s,
whereabouts now unknown).
Margin block of 4,registry mark (3+)
Plate block of 8,imprint and plate
number, whereabouts unknown (4)
Plate block of 20, imprint & plate number (4)

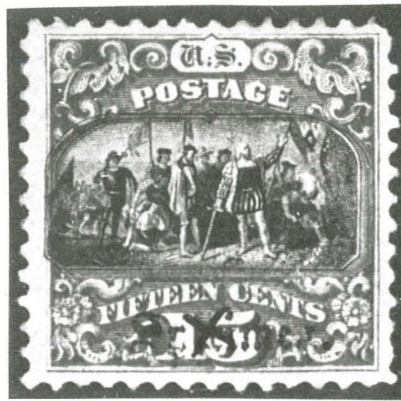
Used- Single (1)
Pair (2)
Strip of three (3)
Strip of four (3)
Strip of five (3+)
Block of four (3+)
Block of nine (4)

Used on Cover-

Pair (2)
Strip of three (3)
Strip of four (3+)

V CANCELLATIONS:

Colors-Black (1)
Blue (1)
Red (2)
Purple or magenta (2+)
Brown (2+)
Green (3+)
Town CDS- Black (2); Red (2+);Blue (2+)
Paid (2+)



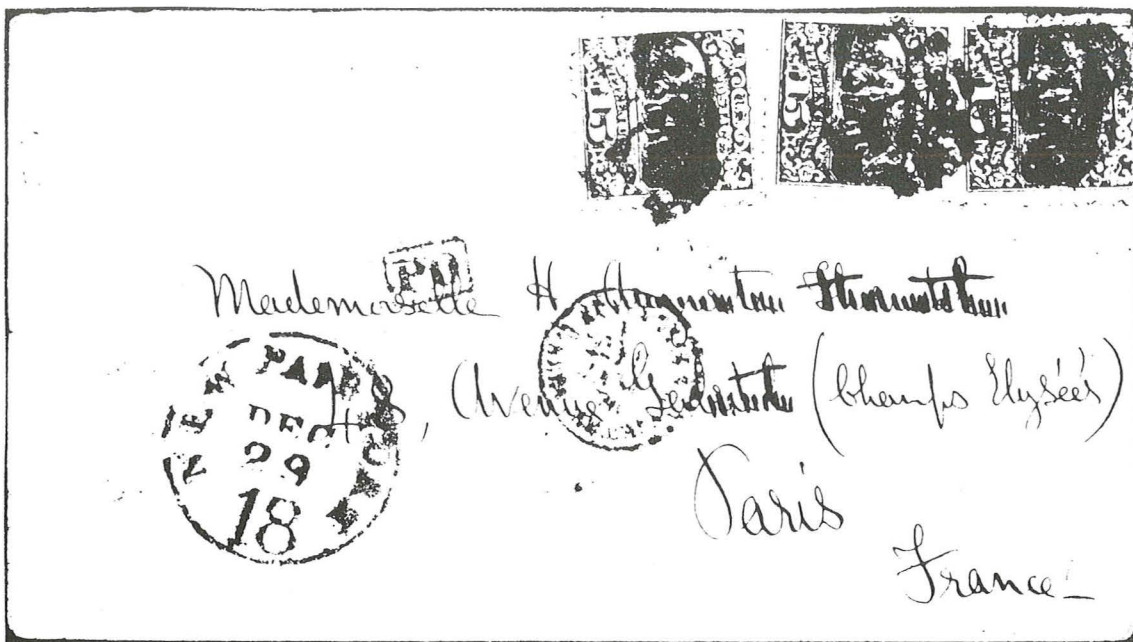
"Specimen" overprint-Type A
(Edward Busch Collection)

V CANCELLATIONS (cont.):

Boxed PD (2)
PAID with numeral (2+)
PAID ALL (2+)
Insufficiently Paid (3)
Numeral (2+)
New York Paid All, Br. Transit (1)
German transit, paid all (3)
New York Foreign Mail fancy (3+)
Supplementary Mail, Types A, F (3)
Railroad (3)
Steamship (3)
Year Date (2+)
FREE (3+)
Wells Fargo (3+)
Japan (3+)
Cuba (3)
Revenue hand stamp (3)
Commercial marking (3)

Generally Found on the Cover:

NY Paid All Direct (2)
Boston PAD (3)
NY Paid + numeral (1)
Boston Paid + numeral (3)
Philadelphia Paid + numeral (3)
European Receiving & Transit markings:
-BREMEN/FRANCO
-Calais, other Fr. transit (1)
-London transit/PAID (2+)
Other Foreign Markings (examples):
-RECLAMATA (3); CHARGE (3); PER OSTENDE (2+)
Registered:
-In circle (1)
-Manuscript (1)
-Straight line (2)
-Oval (3)
-Registered numerals (often mss., 1)
Insured (3+)



TRIPLE RATE — Three 15c Type II 1869s pay the three times quarter ounce rate, New York City to Paris, Dec. 29, 1869. "18" in postmark shows triple 6c credit to France by American packet. (Millard Mack Collection).

ON COVER

VI

- Single (1)
- Pair (2)
- Strip of three (3)
- Strip of four (3+)
- Block (4)
- Earliest known usage: May 23, 1869 (3) — New Orleans to France, Red NYPD 6
- Posted abroad — Japan (4)
- On mourning cover (3)
- Illustrated cover (3+) or corner card (3)
- In combination with other stamps:
 - Domestic use with 1869 stamps
 - 1¢ (3); 2¢ (2); 3¢ (2+); 6¢ (3); 10¢ (3+); 12¢ (3+); 15¢ Type I (4+, unique)
 - 24¢ (4); 30¢ (4).
 - With other U.S. stamps:
 - 1861 Issue (4)
 - 1867 Issue (4)
 - Bank Notes (3)
 - Postal Stationery (2)
 - Mixed franking with foreign stamps:
 - France (4); Turkey (4).

VII ESSAYS: (Brazer numbers)

- 119Ea, frame only (3)
- Black, red brown (3)

VII ESSAYS (cont.):


- 119Eb, frame with vignette mounted in place (3)
- 119E-Bb, Same, on pale cream soft, wove paper for Pan Pacific Exposition 1915 (4+, 2 known)
- 119E-Ba, Re-engraved from new die for 1903 Roosevelt presentation album (3+)

VIII PROOFS:

- 119P1, Large Die Proof (3)
- 119P2, Small Roosevelt die proof 1904 (3, see essays)
- 119P2a, small Pan Pacific Die Proof, 1915 (4+, 3 known, see essays)
- 119P3, India plate proof (2)
- Multiples: Plate Strip of four with imprint and plate number (3)
 - Block of four (2+)
 - Plate block of eight with imprint & plate number (3)


IX SPECIMENS:

- 119SA- Single overprint (3+); double overprint (4). See illustration previous page.



QUALIFIED
AUCTIONEER


DO YOU COLLECT U.S. OR WORLDWIDE STAMPS AND POSTAL HISTORY? ARE YOU A SPECIALIST?




WHAT IS A SCHIFF "ESPECIALLY FOR SPECIALISTS"® AUCTION?

It's an auction designed with YOU in mind. Whether you are a buyer or a seller—each specialized area of collecting is listed in a separate section, making it easier for BUYERS to locate lots of particular interest and for SELLERS to realize maximum exposure for their material.

If you do not get our catalogues you are missing out! Send \$8.50 (\$12.50 overseas) for a full year's subscription to Schiff auction catalogues and prices realized or send \$1.00 (\$1.50 with prices realized) for a Sample copy of our next sale. If picked up at our office the catalogue is complimentary.




We invite you to consign individual stamps or covers, entire collections or estates—for unreserved Public Auction or Private Treaty Sale. WE ALSO PURCHASE OUTRIGHT! Contact us first, describing your material. Include your address and telephone number(s).



Jacques C. Schiff, Jr., Inc.

195 MAIN STREET
RIDGEFIELD PARK, NEW JERSEY 07660
Phones: (201) 641-5566 — From N.Y.C. 662-2777
Licensed & Bonded Auctioneers—Established 1947



THE 1869 ISSUE USED IN NORTH CAROLINA

By William M. Wickert PRA 373

Previously I discussed and listed 1869 covers which originated in or were delivered to Virginia (See **1869 Times 43:18-20**). A natural progression would take us to neighboring North Carolina. While usage in Virginia was numerically much greater than in North Carolina, North Carolina usages are surprisingly few.

Very few 1869 covers are recorded to date. I am relying heavily on lists in **The 1869 Issue on Cover: A Census and Analysis** (A 1986 PRA publication). There are no covers known to me used with the 1869 10¢, 30¢ or 90¢, the re-issues or mixed frankings involving North Carolina usage.

As with the Virginia study, I have almost totally ignored the 1¢, 2¢ and 3¢ (But see illustration next page) issues. I begin with the 6¢ 1869, of which only one North Carolina cover is recorded. This example arrived in North Carolina from Massachusetts.

There are two 12¢ covers recorded, but one is the same as the 6¢ cover mentioned above. It is listed under both values, since it is franked with one copy each of the 6¢ and 12¢ stamp.

The 15¢ Type I was used on two NC covers during the space of about six weeks. One originated in North Carolina, and the other entered the state. It is interesting to note that of the two states examined to date, North Carolina is the only one with a Type I 15¢ usage.

A Type II 15¢ is found on four covers: three originating in North Carolina and the other delivered to an address in Louisburg, NC. One cover from Louisburg to London, England has a 24¢ 1869.

Thus, there is little recorded usage of the 1869 Issue in North Carolina. With about thrice as many covers used in Virginia, one has to wonder why there was so little usage of the 1869 Issue in North Carolina. Surely, there are more 1869 usages involving North Carolina.

TABLE I

ORIGIN DESTINATION	DATE	STAMPS
	Six Cent	
Ipswich, MA/New Hampton, NC	5/31/70	115(1), 117(1)
	Twelve Cent	
Charlotte, NC/Salisbury, GB	8/5/69	117(1)



NORTH CAROLINA RAILROAD — Salisbury, NC, to Greensboro, NC, April 26 "N.CAROLINA R.R." CDS, 3c letter rate, Ex-Towle, D. Carnahan (Frajola 12, L-489, 3.31.84).

TABLE I
(cont.)

Twelve Cent

ORIGIN DESTINATION	DATE	STAMPS
Ipswich, MA/New Hampton, NC	5/31/70	115(1), 117(1)

Fifteen Cent-Type I

New Berne, NC/Wilson, NC	6/02/69	114(1), 118(1)
NY, NY/Cherokee Co., NC	7/16/69	114(1), 118(1)

Fifteen Cent-Type II

Shelby, NC/Statesville, NC	3/08/70	114(1), 119(1)
Norfolk, VA/Louisburg, NC	5/17/70	119(1), U58
Oxford, NC/??, VA	10/21/--	114(1), 119(1)
Mt. Pleasant, NC/Fairfield, NY	01/12/7-	119(1), 147(1)

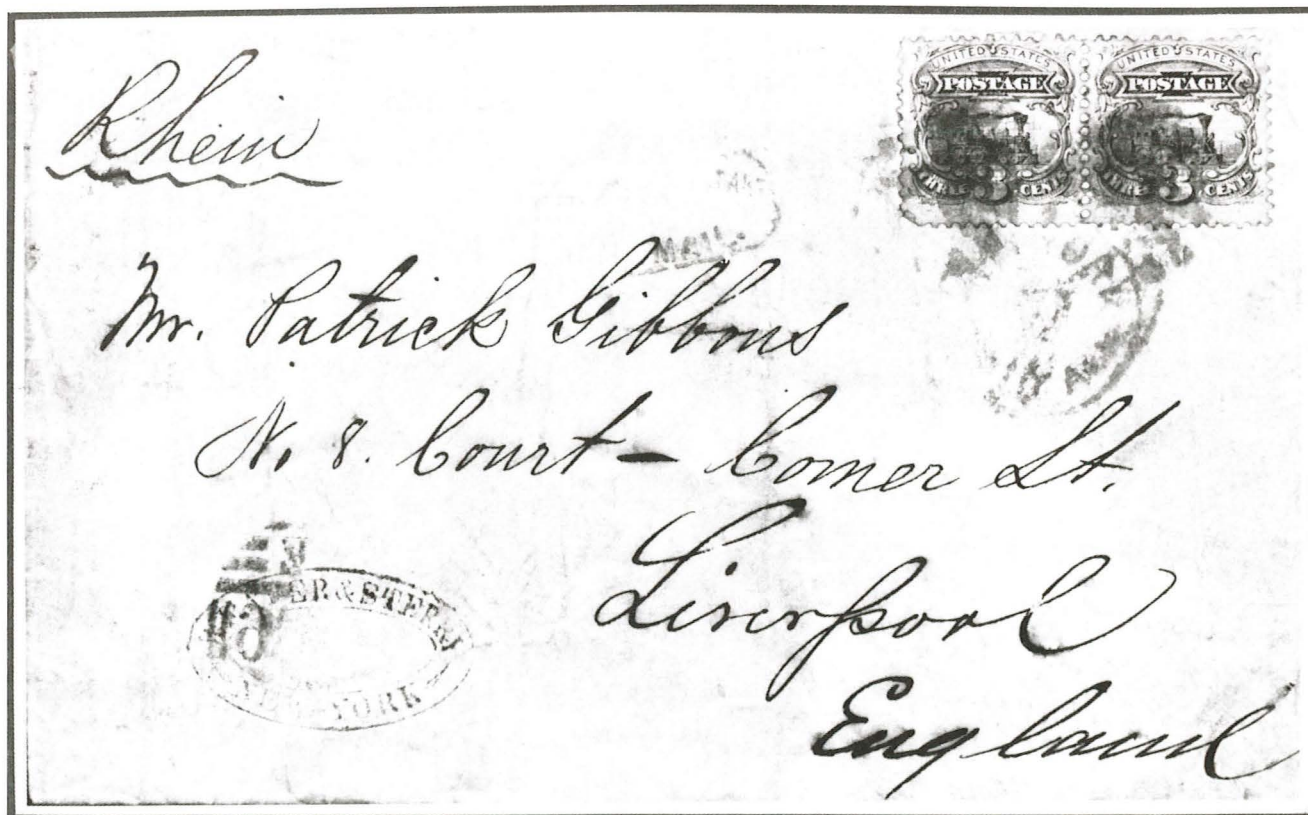
Twenty Four Cent

Louisburg, NC/London, ENG	07/--/70	120 (1)
---------------------------	----------	---------

RARE RATE MARKINGS ON 1869 COVERS



DUE 7 — Sender in Manzanillo (Jalisco, west coast of Mexico), applied 3¢ 1869 for overland carriage to San Francisco, but it was sent by Pacific steamship at 10¢ rate, thus “DUE 7” marking. (Sold in 11.26.88 R. Frajola Sale, L-484, Photocopy courtesy of J. Forster).



SUPPLEMENTARY MAIL — Partially struck, in red, supplementary mail Type A marking (above address) is struck on this 6¢ + 6¢ rated Feb. 12, 1870 cover to England. The supplementary mail charge (6¢) was paid in cash. More on next page. (Photo courtesy of Jim Stever, PRA 29).

The supplementary mail cover to Liverpool, illustrated on the preceding page, is a folded letter dated Feb. 12, 1870. The contents, probably currency, were important, and Weaver & Sterry Co., New York, wanted to post it immediately. The firm wrote "Rhein" in the upper left corner. The North German Union SS Rhein was due to depart that day. The letter was mailed at a special window at the NY post office or possibly taken to a dockside post office, where late mailings of foreign-bound mail were expedited. In either case the cover was struck with the red "Type A" supplementary mail marking.

The "Type A" marking was apparently in use from about 1859 to 1872. Supplementary mail was charged double rate. Thus, an additional 6¢ was charged for this letter. According to Van Vliissingen & Waud (**New York Foreign Mail Cancellations**, Collectors Club of Chicago, 1968, pp 82-87), "until 1869 covers bearing the 'Type A' marking show only the regular rate in postage stamps, indicating that until then the extra rate was collected in money." Later supplementary mail covers bear double postage. The New York exchange office marking and cancellations on this cover are in red.

Scott Catalogue listings of 1869 stamps don't show a supplementary mail usage for the 3c stamp. Listed in the catalog are 10c, "Type A"; 15c Type II, supplementary "Types A" and "F"; 24c, "Type A"; and 30c, "Type A." This cover may well merit a supplementary mail "Type A" listing under the 3c 1869, Scott's #114.

OUR COMPREHENSIVE 1869 STOCK

***INCLUDES MANY ESSAYS (including rarer ones),
PROOFS, STAMPS (all values unused and used),
AND COVERS.***

WHAT DO YOU NEED?

SELECTIONS GLADLY SENT ON APPROVAL AGAINST SPECIFIC REQUESTS.

MAY WE HEAR FROM YOU ?

Satisfaction or Immediate Refund — Gladly Sent on Approval with References
Installment Payment Terms if Desired — (No Interest or Carrying Charges)

JACK E. MOLESWORTH, INC.

APS
SPA

88 BEACON ST. BOSTON, MASS 02108
(617) 523-2522

CSA
USPCS

1869 COVER CENSUS BOOK



Mixed franking of 5c blue Hawaii Kamehameha (#32, island internal rate) and US 12c grill (#97) plus pair 2c 1869 paying 10c transpacific plus 6c rate US-England via San Francisco, sent 6-22-1870. (Photo-Millard Mack).

THE 1869 ISSUE ON COVER: A CENSUS and ANALYSIS

Newest hardbound work from the 1869 PRA, Inc. Edited by Jonathan W. Rose and Richard M. Searing, Ph.D. Contains 223 pages, 41 color and 75 black and white illustrations. Census listings for all values 6c-90c, plus the re-issues on cover and mixed franking covers with 1869 stamps. Accompanying articles on all values 1c-90c, plus the re-issues and mixed franking covers. Writers include the editors, R. H. (Jim) Stever, Michael Laurence and Stanley M. Piller. The book was released at AMERIPEX '86. Only 250 bound copies are available, 200 regular and 50 deluxe part leather-bound. The book represents 10 years of work by PRA members.

Price: Regular Edition - \$70

Deluxe Edition

(100 copies only) \$125

Order from: Jeffrey M. Forster

99 Almaden Ave., Suite 400

San Jose, CA 95113

Checks payable to: U.S. 1869 PRA, Inc.

WINNER: CHICAGOPEX 1986 Literature Competition, gold, with felicitations of the Jury.

1987 CAPEX Literature Competition (International), Silver.

1988 SESCAL Literature Competition (Los Angeles), Vermeil.



SPECIAL CENSUS OF 1869 COVERS

By Richard Cutts, PRA 401

Editor's Note:

For those collecting the 1869 Issue interested in the 3¢ value--and this group includes virtually all of us--exhibitor Richard Cutts, of Georgetown, Texas, PRA publicity director, has a surprise for you.

Cutts, who is facile with his IBM compatible computer, is compiling a computerized census of all "interesting" 1869 covers. This group includes many of the #114 covers which show more than two examples used domestically. Included are the following categories of use: foreign destination, territorial, registered, combination frankings with stamps of other US issues and with foreign stamps.

The data base, Cutts states, "has been generated using PC FILE+ relational database management software on an IBM AT compatible computer. The format is similar to that used for the 1986 Census book. Two additional fields have been included for each record, 'categories,' to allow easy sorting of specific cover types, and 'addressee,' to permit analyses of major correspondences, e.g., Shaw, Warner, Lyman..."

Abbreviations used are as follows:

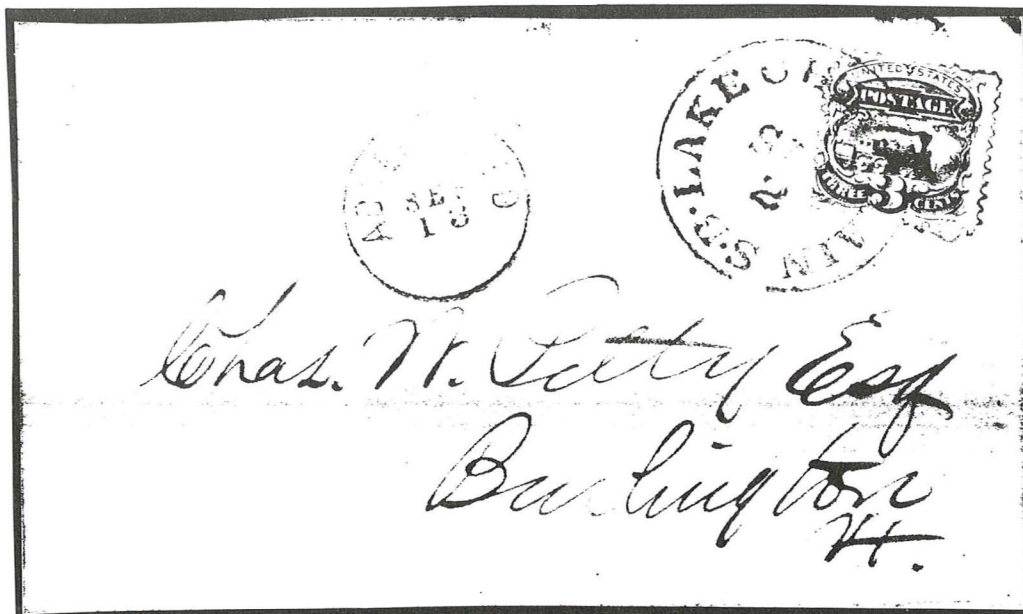
AM: Due, advertised, carrier, missent, USDLO, etc.
EU: Early use through 4.15.1869.
EX: Express usages (Eastern and Western).
FD: Destined for or forwarded to a location outside of the US.
FO: Used on mail originating outside of US.
MF: Used with foreign postal stationery or adhesives.
MR: Covers with 2 or more values of 1869 Issue paying multiples of 3¢ domestic rate.
MU: Covers with four or more 3¢ 1869s.
MV: Bisects, plate # and pos. dots, plate cracks, grill varieties, etc.
OI: Used with US stamps other than 1869s or on US postal stationery.
RG: Registered--domestic and international.
RR: Railroad, RPO and/or station agent markings.
TE: Originating in or forwarded through one of 11 US territories.
WW: Postal markings showing carriage on inland or coastal waterway routes.

Also of interest to Cutts are fancy cancels, unusual townmarks, illustrated advertising or propaganda covers, late uses (after 1880), and usages from less populous states, primarily in the South and West.

The database includes all covers listed in the 1986 Census book, three **Registers** (1977, 1978 and 1982) and all issues of the **1869 Times**. Included are covers in the Cutts collection and a "few" covers noted in exhibits. In all, some 857 3¢ 1869 covers are in the census to date.

Readers of the **Times**, especially PRA members, are encouraged to send photocopies and written descriptions of covers not on the list, as well as additional information about listed covers to Cutts at: 1312 Elm St., Georgetown, Texas, 78626.

Owners desiring anonymity will be listed in the reference column as "collector." Listings of various cover groups will run in future issues of the **1869 Times**.



STEAMBOAT — Three-cent 1869 tied by “LAKE CHAMPLAIN S.B.” Sept 2 postmark, “S.B.” standing for steam boat. Also note Burlington, VT “ADVERTISED SEP 13” circular strike at left. (R. Cutts Collection)

TABLES

I

Three-cent 1869s on cover used with other 1869 values

1¢.....	24
2¢.....	67
6¢.....	30
10¢	82
12¢	60
15¢ Type I	9
15¢ TypeII.....	81
24¢	7
30¢	1
90¢	0

II

Usages with US issues other than 1869s by **Scott** number

#24	1
#26	1
#68	1



UNDERPAID TO SWEDEN — Strip of four and a single 3c underpay by 1c the 16c per half ounce rate NGU direct to Sweden in 1869. Cover treated as fully prepaid. Note German transit markings and ratings. (R. Cutts Coll.)

TABLES

II

(cont.)

#69.....2	#98.....16	#U50.....1
#71.....1	#99.....1	#54.....1
#76.....1	#134.....2	#U58.....45
#77.....4	#136.....1	#U59.....23
#91.....1	#146.....1	#U62.....1
#93.....3	#147.....5	#U64.....1
#94.....5	#149.....1	#U65.....1
#95.....2	#158.....2	#U67a.....1
#96.....5	#U35.....1	#U76.....1
#97.....5	#U40a.....1	#U82.....1

III

Foreign Destinations (35 different)

Destination	Quantity	Destination	Quantity
ALG Algeria	1	AUT Austria	3
ARG Argentina	4	AUS Australia	2

III

Foreign Destinations (cont.)

BCL	British Columbia.....	2	JAP	Japan.....	9
BEL	Belgium.....	1	MAD	Madeira.....	1
BRA	Brazil.....	2	MAU	Mauritius.....	1
CAN	Canada.....	31	MEX	Mexico.....	4
CHI	China.....	2	NOR	Norway.....	1
COL	Colombia.....	4	NSW	New South Wales.....	1
DEN	Denmark.....	17	NTH	Netherlands.....	1
FRA	France.....	54	PEI	Prince Edward Island.....	2
GBR	Great Britain.....	39	PER	Peru.....	5
GER	Germany.....	34	SAF	South Africa (Cape Colony) 1	
GRE	Greece.....	4	SCO	Scotland.....	3
HAW	Hawaii.....	4	SPA	Spain.....	7
HUN	Hungary.....	1	SWE	Sweden.....	13
IND	India.....	8	SWI	Switzerland.....	15
IRE	Ireland.....	2	TUR	Turkey.....	1
ITA	Italy.....	15			

IV

Domestic Origin

Alabama.....	8	New York.....	156
Arkansas.....	0	North Carolina.....	8
California.....	30	Ohio.....	21
Connecticut.....	31	Oregon.....	0
Delaware.....	2	Pennsylvania.....	39
District of Columbia.....	8	Rhode Island.....	8
Florida.....	2	South Carolina.....	9
Georgia.....	7	Tennessee.....	10
Illinois.....	26	Texas.....	5
Indiana.....	4	Vermont.....	7
Iowa.....	10	Virginia.....	14
Kansas.....	5	West Virginia.....	1
Kentucky.....	7	Wisconsin.....	10
Louisiana.....	18		
Maine.....	9		
Maryland.....	22		
Massachusetts.....	53		
Michigan.....	15		
Minnesota.....	4		
Mississippi.....	7		
Missouri.....	7		
Nebraska.....	0		
Nevada.....	1		
New Hampshire.....	9		
New Jersey.....	14		

Territories

Alaska.....	6
Arizona.....	13
Colorado.....	25
Dakota.(DT).....	5
Idaho.....	3
Indian.. (IT).....	11
Montana.....	16
New Mexico.....	6
Utah.....	11
Washington.....	11
Wyoming.....	17



MIXED FRANKING — 15c Type I, NYC to Frankfurt, Germany, 6/69 (?), forwarded to Wurzburg with N.Ger. Confederation 3kr rose (Sc.#9). With enclosure. Not in census book, 1 of five #118 mixed frankings, only one to Germany. (Photo - R. Kaufmann).

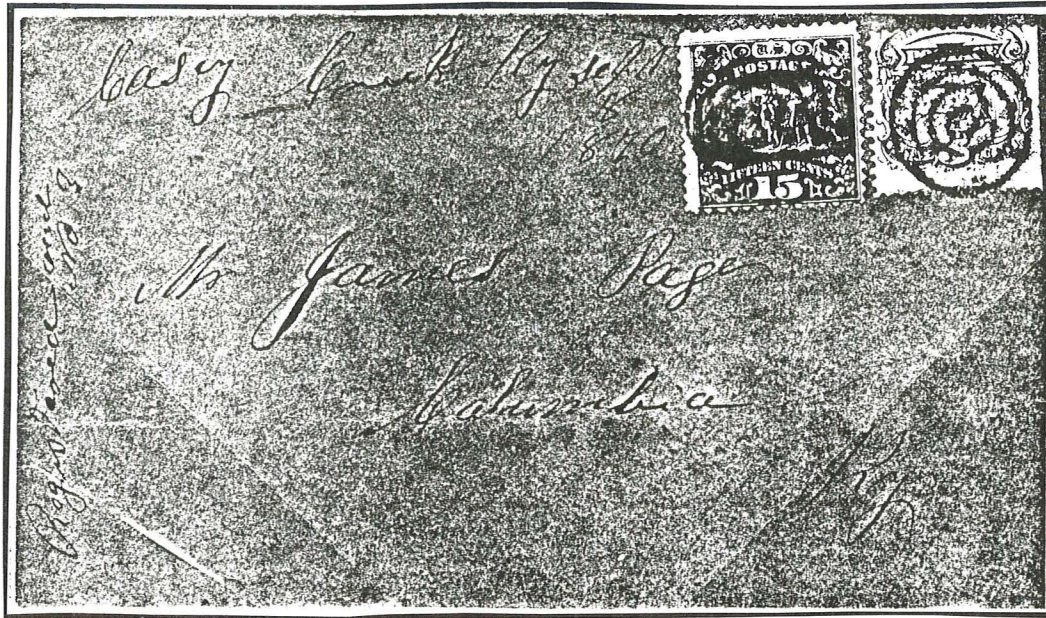


TYPE I DOMESTIC REGISTERED — 15c Type I and 3c 1869 pay registration and letter rate on this June 20, 1869 cover, Weedsport, NY, to Oswego. From collection of W. R. Radford, PRA 429, Vancouver, WA.

1869 COVER CENSUS UPDATE 15c TYPE I

Additions:

Origin/Destination	Date	Stamps	Description/Remarks	Source
NYC/Frankfurt & Wurzburg, Ger.	6/69?	118/NGC #9	Mixed Franking	RK S-12/88 L-228
Weedsport, NY/Oswego, NY	6/20/69	114, 118	Reg. No. 29	Wm. Radford
Casey Creek, KY/Columbia, KY	9/8/70	114, 118	Reg. 3, late use	Wm. Radford



LATE USAGE — Another registered domestic usage of #118 with #114, Casey Creek, KY, to “Calumbia.” Registered pen docketing (top) for Sept. 8, 1870 makes this the third latest usage known to PRA of #118 on cover. (Photo courtesy of W. R. Radford).

Sign with Christie's.



Our clients benefit from the knowledge, efficiency and personal service we provide in every transaction. Buying or selling, collectors around the world find the Christie's method of doing business to be convenient, successful and thoroughly professional.



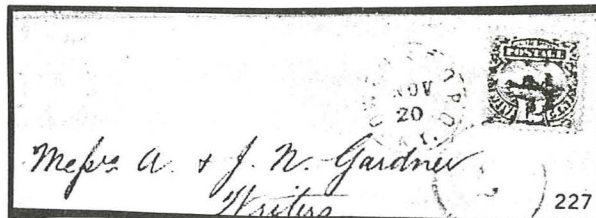
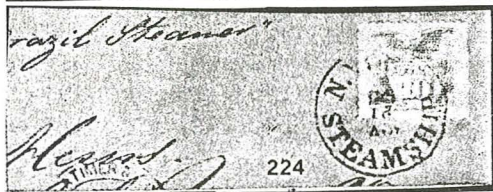
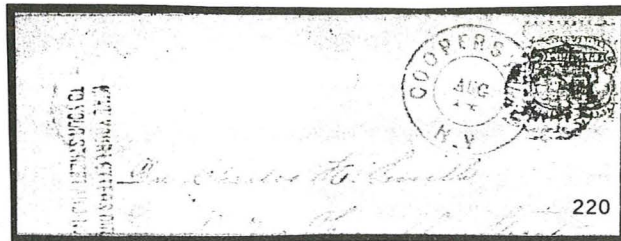
CHRISTIE'S
ROBSON LOWE

NEW YORK

502 Park Avenue, New York, New York, 10022

AUCTION REPORT

Editor's Notes: All prices realized include the 10% buyer's premium.
An Asterisk (*) indicates the item is illustrated.



ROBERT G. KAUFMANN, Sale 56, Dec. 17, 1988, Newark, NJ

This was a postal history sale with a few noteworthy items, the chief being the mixed franking cover with Scott's #118 to Frankfurt and Wurzburg, Germany, described elsewhere in *Times* 45.

Other items of note offered in the sale included a 3c 1869 tied by small Waterbury, CT, Bee, fine, which opened at \$2,400, but didn't meet the minimum estimate of \$2,500; another 3c, this one to Cooperstown, NY (Baseball Hall of Fame town), tied by wreath cancel (Eno SD-M12) and bearing the scarce straight line marking, HAVE YOUR LETTERS DIRECTED TO YOUR STREET AND NUMBER, sold for \$209.*

Another #114, this with Concord, NH, Apple cancel, went for \$330, after opening at \$125. A fourth scarce 3c, this from Plymouth, MA, with the rare red illustration marking the 250th anniversary of the landing of the Pilgrims, vf, sold for a rich \$770. A 10c 1869 tied by NY Steamship dater on folded letter from Mayaguez, PR, to Philadelphia, went for \$742.50.* A beautiful 12c tied on cover to Scotland (PFC) reached \$687.50.* Finally, a quadruple-rated cover to Manchester, England, franked with the 24c 1869, opened and closed at \$5,500*, and may not have sold.

ROBERT A. SIEGEL AUCTION GALLERIES, INC.

New York City, Sale 704, Dec. 15-17, 1988



At quite another type of sale, many choice and lovely off-cover 1869s realized remarkable prices. Five examples are illustrated above: Lot 1319, a jumbo 3c with black rosette strike sold for \$137.50* (cat., \$5.50); a richly hued 6c with scarce red town mark, hit \$495* (c., \$120); and equally lovely 6c with red "PAID ALL" and blue NY leaf cancel, soared to \$687.50* (c., \$115); two choice used 90c Lincolns went for \$2,035* (lot 1405) and \$1,485* (lot 1407), against catalog of \$1,200.

LAST LOOK



RARE COMBINATION — A 24c 1869 and a 10c F grill (?) Washington pay the 34c per half ounce rate from San Francisco (July 30, 1869) to Lima, Peru on this non-Davis cover sent by British mail. The red 24c credit to Britain, reddish magenta San Francisco CDS, and Aug. 13, 1869 Panama transit add charm to the cover. Not listed in the 1986 cover census book.



UNUSUAL — Illustrated covers with the 12c 1869 are rare. Here a 12c and a 3c pay the 15c half ounce rate direct closed mail via England and Bremen (or Hamburg) to Switzerland. Origin: Philadelphia, June, 1869. (Photocopy courtesy Stanley Gibbons, Ltd. London).

1869 PRA Literature

available for immediate delivery, postpaid

* = Limited Supply = Less than 10 copies available

1976 Register (Loose Leaf)	\$12.00
1977 Register (Loose Leaf)	\$10.00
<i>(Binder FREE with order for both 1976 & 1977 Registers)</i>	
*1978 Register (Hard Bound)	members \$10.00, non-members \$15.00
1982 Register (Hard Bound)	members \$24.00, non-members \$30.00

Appletons Railway Map of the United States & Canada (1977 reprint) of 1869 map	3.00
---	------

1869 TIMES

Vol. 1 & 2 Whole # 1 thru 7 (Soft Bound)	12.00
*Vol. 3 whole # 8 thru 11 (Soft Bound)	10.00

Individual Issues available at \$5.00 each after Whole #34. Up to Whole #34, \$2.50 each.

(Discounts available for long runs and quantity purchases — INQUIRE!)

Whole # * 8

* 10

* 11

* 12

* 13

* 14

* 15

16

17

18

19

20

21

22

22- EXTRA (1975-1980 Index)

24

* 25

26

27

28

29

30

31

32

33

34

35

36

37

38-39

40-41

Please note that Whole #23 is not available presently.
I will entertain inquiries from interested parties desirous
of obtaining a reprinted version produced in limited
quantity.

**Make checks payable to: U.S. 1869 P.R.A.
Brad Arch, 144 Hamilton Ave., Clifton, NJ 07011-1224**

VENTURA STAMP

“Taking a Scholarly Approach to the Classics”

Sell to one of the world's
most aggressive and
highest paying buyers

24 Hours

or write
University Stamp Co., Inc.
P.O. Box 4784
Stamford, CT 06907



1869 PRA

Affiliate University Stamp Co., Inc.

Offers you an opportunity to take part in our fabulous quality U.S. net price list; a fully illustrated list with many 1869 items and other U.S. singles, mint, used, fancy cancels, multiples, proofs and covers. To receive your complimentary copy call...

or write
Ventura Stamp Company
P.O. Box 4760
Stamford, CT 06907





Recognized Buyers

Roger G. Weill • Raymond H. Weill

Raymond H. Weill Co.

at 407 Royal Street
in New Orleans