

1869 Times

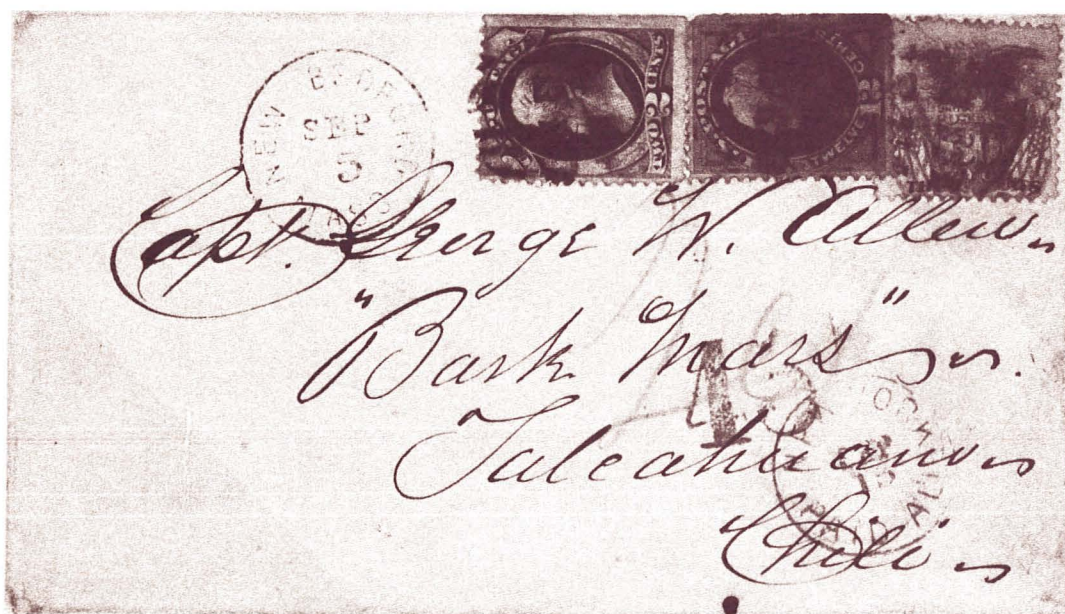
QUARTERLY JOURNAL OF THE U.S. 1869 PICTORIAL RESEARCH ASSOCIATES, INC.

June, 1988

Price \$5.00

Whole No. 43

Vol 12, No. 2



This unique cover from the Elliott Coulter collection shows the double 22¢ rate per half ounce (44¢) to Talcahuano, Chile, paid by a 30¢ 1869 and 2¢ and 12¢ National Bank Note Co. stamps. Service was by American packet to Panama, from there by British ship to the Chilean port with 24¢ credited to Great Britain. This cover was sent from whaling center, New Bedford, MA, to Chilean bank, care of "Capt. George W. Allen," Sept. 5, 1871.

Inside: Coulter Covers to and from Faraway Places

The U.S. 1869 Pictorial Research Associates

... dedicated to the advancement of knowledge through research and study of the 1869 issue.

1869 ISSUE

•
AS WELL AS ALL CLASSIC
UNITED STATES ISSUES
STAMPS AND COVERS
AVAILABLE
•

ROBERT A. SIEGEL, INC.

160 EAST 56th ST. - NEW YORK, NY 10022

Buying & Selling
QUALITY U.S.

42 Years Experience as a
Professional Philatelist
Specializing in Classic U.S.

Auction Agent and Consultant.

American Philatelic Brokerages
John Birkinbine II

7225 N. Oracle Road, Tucson, Arizona 85704

(602) 297-3456

WHEN SEEKING THE FINEST IN UNITED STATES PHILATELY:

- UNUSED
- USED
- STAMPLESS
- POSTAL HISTORY
- CLASSICS
- BACK-OF-BOOK
- POSSESSIONS
- REVENUES
- ESSAYS
- PROOFS
- MULTIPLES
- AGENT WORK
- LITERATURE
- INVESTMENT

PHILIP T. BANSNER ALBERT F. CHANG WILLIAM T. CROWE

Send Your Name & Address For A Free Copy Of Our Net Price Catalog



**EMPIRE
GROUP**
INCORPORATED

*Box 2529
West Lawn, Pa. 19609
(215)678-5000*

1869 Times

Quarterly Journal of the
U.S. 1869 Pictorial Research Associates, Inc.
©Copyright 1988, All Rights Reserved
U.S. ISSN 0363-6542

Published by
The U.S. 1869 Pictorial
Research Associates, Inc.
30 Golf Road
Pleasanton, California 94566-9751
Membership in the 1869 P.R.A.
is available upon application.
Membership dues are \$20.00 per year
Initiation fee (paid once) \$2.00



DIRECTORS

BRAD ARCH
144 Hamilton Avenue, Clifton, New Jersey 07011

RICHARD CUTTS
1312 Elm Street, Georgetown, Texas 78626

JEFFREY M. FORSTER
99 Almaden Boulevard, Suite 400, San Jose, CA 95113

KENNETH R. LAURENCE
Immediate Past President
13005 Keystone Terrace, North Miami, Florida 33181

JONATHAN W. ROSE
30 Golf Road, Pleasanton, California 94566-9751

RICHARD SEARING, Ph.D.
P.O. Box 1174, Yorba Linda, California 92686

REX H. (JIM) STEVER
First City Bank Trust FCB 16, Corpus Christi, TX 78477

WILLIAM M. WICKERT
3348 Clubhouse Road, Virginia Beach, Virginia 23452

MARGARET L. WUNSCH
Vice-President Emeritus & APS Representative
12 W. Calle Cannon de Faber, Green Valley, AZ 85614

SOCIETY OFFICERS

JEFFREY M. FORSTER
Chairman of the Board and President
99 Almaden Boulevard, Suite 400
San Jose, California 95113

RICHARD SEARING, Ph.D.
Vice-President
Box 1174
Yorba Linda, California 92686

WILLIAM M. WICKERT
Secretary-Treasurer
3348 Clubhouse Road
Virginia Beach, Virginia 23452

JONATHAN W. ROSE
Editor and Director
30 Golf Road
Pleasanton, California 94566-9751

1869 TIMES

June 1988
Price \$5.00

Whole No. 43
Vol 12, No. 2

EDITORIAL BOARD

Jon Rose, Editor-In-Chief
30 Golf Road
Pleasanton, California 94566-9751

CONTRIBUTING EDITORS

Richard M. Searing, Ph.D.
cover census coordinator

Scott R. Trepel
fancy cancels

Rex H. (Jim) Stever
1869 Specialized Catalog

William T. Crowe & Jon Rose
Auction News

PUBLICITY DIRECTOR

Richard Cutts
1312 Elm Street
Georgetown, Texas 78626

PUBLICATIONS SALES DIRECTOR

Brad Arch, 144 Hamilton Avenue
Clifton, New Jersey 07011

ADVERTISING MANAGER

William T. Crowe
P.O. Box 214, Danbury, Connecticut 06810

Address changes should be sent to the secretary-treasurer; back issue orders and other correspondence to the editor-in-chief. Reports of new 1869 items should be made to the editor-in-chief. Do not send stamps or covers unless requested to do so. Any items sent will be safeguarded, but no liability for loss or damage attaches to any editor or the 1869 Pictorial Research Associates, Inc.

PRA Board of Directors Meeting: Jan. 22, 1988

The board of directors of the 1869 PRA, Inc. met on January 22, 1988 at ARIPEX in Phoenix, Arizona.

Actions taken:

1. The board created an Elliott Coulter Memorial Award to honor the late past president of the 1869 PRA and chairman of the Philatelic Foundation in New York City. The award will be given to the writer of the best article each year on 1869 stamps and/or postal history appearing in *any* philatelic publication. A committee consisting of President Jeff Forster and editors Jon Rose and Richard Searing, Ph.D., will choose the winner for 1988. The nature of the prize is yet to be determined.

2. Brad Arch, of Clifton, NJ, currently 1869 PRA publications sales director, and Jim Stever, a former PRA president, were elected to the board, replacing Leonard Kapiloff, DDS, and Fred W. Lopez.

3. The past financial year showed income of \$8,200 and expenses of \$6,570. The balance of \$1,630 is committed for 1869 *Times* publication costs. Dues remain at \$20 annually, initiation fee, \$2 (one time), according to PRA Treasurer Bill Wickert. Advertising Mgr. William Crowe reported advertising income of \$1,365 on hand, with \$765 in accounts receivable through *Times* #42 (2/88).

4. It was decided to have three instead of four issues of the *Times* during 1988 due to tight finances. The next issue, #43, is the one in hand.

5. President Forster reported that only 200 of the 400 regular edition and 50 of the 100 deluxe copies of *The 1869 Issue on Cover: A Census and Analysis* remain available for sale. Printer Steve Karbo's final bill of \$4,000 is to be paid by the end of 1988, if not sooner, for his work in 1986 on the book.

6. The next PRA board meeting is scheduled for October 20-23, 1988 at the ASDA Show in New York City.

CONTENTS: *Times* #43, June 1988

Page 2	1869 PRA Board of Directors Meeting, Jan. 22, 1988, a Report ... The Editor
Page 3	PRA President's Message.....Jeffrey M. Forster
Page 4	The 1869 Specialized Catalog--A Beginning The Editor
Pages 5-12	The Elliott Coulter Covers--A Story in Pictures The Editor
Page 13	The 1869 Cover Census Book..... Advertisement
Page 14	1869 Issue in Pictures..... The Editor
Pages 15-16	Auction Report The Editor
Page 17	1869 PRA Literature for Sale..... Advertisements
Pages 18-20	A Look at 1869 Covers Used in Virginia William M. Wickert
Page 23	Last Looks..... The Editor

Advertisements: *Times Classified* (p.16); *Christie's* (p.21); Jacques C. Schiff, Jr. (p.22); Jack E. Molesworth (p.22); University Stamp Co. and Ventura Stamp Co. (p.24).

PRA PRESIDENT'S MESSAGE

This issue of the *1869 Times* is devoted in large part to the postal history collection of the late Elliott Coulter. The large gold medal holding was exhibited last year at CAPEX in Toronto. It features international usages of the 1869 Issue and the 1875 and 1880 Re-Issues of the designs.

Elliott devoted himself to acquiring 1869 covers with various and unusual rates to distant and exotic countries. Although he lacked a few destinations included in the handful of other important 1869 cover holdings, including my own, his exhibit is probably the most wide-ranging assembled in modern times, if not all time, showing usages of the 1869 stamps and re-issues in the international mails. His exhibit also won a large gold medal at AMERIPEX.

The covers in the Coulter exhibit included frankings of the 1861 and 1867 grilled issue, as well as Bank Notes used with 1869s, lending further glamor to the presentation. The pictorial article in this *Times* gives the reader at least an overview of the Coulter exhibit. It includes some of the more unusual covers, which formed the heart of the showing.

* * * * *

Dealer Richard Frajola of Danbury, Connecticut, a postal historian who specializes in auctions of postal history, in part is sponsoring this issue of the *1869 Times*. The 1869 Pictorial Research Associates, Inc. and I, personally, wish to thank Mr. Frajola for his support in producing this issue. Mr. Frajola has always been generous in providing funding for PRA activities.

It is my hope that each reader of this issue of the *1869 Times*, PRA member or not, enjoys it. We can look forward to additional photos and articles on the Coulter Collection. Finally, I would like to thank members of the Coulter family, especially Judy Coulter, as well as the Philatelic Foundation, for cooperation in providing illustrative material for this issue and future issues of the *1869 Times*.

Jeffrey M. Forster

**THIS ISSUE OF THE 1869 TIMES IS MADE POSSIBLE
IN PART BY THE GENEROUS CONTRIBUTION OF
RICHARD C. FRAJOLA, AUCTIONEER OF POSTAL
HISTORY MATERIAL, OF 85 NORTH STREET,
DANBURY, CT 06810. MR. FRAJOLA IS MEMBER
#263 OF THE 1869 PRA, INC.**

FROM THE EDITOR

A future project dear to my heart is the creation of a specialized catalog of the 1869 Issues and the 1875 Re-issues. This work would be illustrated in color and black and white. It would be of pocket size or no larger than 5½ x 8½". It would be available only to members of the 1869 PRA, Inc. A project like this with a printing of 400-500 would cost \$15,000-\$25,000. Below is a sample page I have drawn up detailing facts about the 2c 1869. On-cover and off-cover examples, including varieties and multiples, would be illustrated on other pages. What do you think? Your suggestions are welcome.

JON ROSE

The 2c 1869

Scott 113

Varieties

1869 SC

I SHADES: Pale Brown
Red Brown
Orange Brown
Deep Brown
Black Brown
Yellow Brown

II ON COVER: Single
Pair
Strip of Three
Block of Four
Strip of Four
Strip of Five
Strip of Six
Block of Ten
(Hiogo to Siegen, Prussia)

Bisects: [28 known genuine]
Used as 1c Vertical
Diagonal
Horizontal

Posted Abroad: Japan
Germany
Low Countries
Hawaii
Puerto Rico
China
St. Thomas

Earliest Known: Dated Mar. 26, 1869 NYC Local
[Siegel 367 ('70)L-209; sf
\$270 dated enclosure].

2c Ferriage or Line Office rate [US-Canada]
Revenue Usage (Manuscript Cancel)
Advertising: Overall
Corner Card

Combinations Known (domestic): with 1c, 3c, 10c,
15c (II), possibly 6c and 12c

Combinations Foreign: 1c, 3c, 6c, 10c, 12c,
15c (II), 24c, 30c.

IIa OTHER POSTAL HISTORY: Used with postal stationery, Bank Note Issues, with 1867 grilled Issues, with 1861-67 Issues, Mixed Frankings (foreign stamps).

III CANCELLATIONS: Colors: Black, blue, red, magenta, purple, ultramarine, green, orange.
Carriers: Black, Blue, Red (?) "PAID" & "PAID ALL".

Towns: Black, blue, red, green.

Steamships: New York, Pacific Mail SS/

Japan: Hiogo, Yokohama, Nagasaki

China: Shanghai, Hong Kong.

Printed Precancellations: "Jefferson, Ohio"

Others: Numeral, Waterbury fancy, Other fancy, Hawaii, Advertising, Railroad.

IV PLATE NUMBERS (6): 3, 4, 5, 6, 27 & 28.

V PRINTING VARIETIES:

Without Grill	Plate Crack
Double Grill	Plate # Single
Split Grill—horizontal	Double transfer
vertical	Double Impression
Quadruple split grill	Arrow Single
Printed on both sides	Straddle pane single

VI MULTIPLES:

[largest known: part sheet, 110 copies (10x11), top imprint/pl.#27,og, Siegel Rarities '82, RS596, L-237, sf \$12,000]
: pair, strip of three, block of four,
: Margin block of four (arrow); of four (plate number); of six (imprint)
: Margin block of ten, imprint and plate number (known: Pl.27, 28).



ELLIOTT H. COULTER

THE COULTER COVERS

The late, lamented Elliott Coulter's collection of 1869 covers to foreign destinations bridged the Earth. His magnificent aggregation proved how widespread usage of the 1869 Pictorial Issue was. His efforts and taste are an inspiration to us all in our philatelic endeavors. Elliott, former PRA and Philatelic Foundation president, won his second international large gold medal at CAPEX in 1987, the first being at AMERIPEX at Chicago in 1986. It would just have been a matter of time before he would have entered his 1869 "destination" cover exhibit in the FIP championship class. But he passed away last October.

Elliott's collection for now at least is still intact. To give readers of this journal some idea of its scope, we have filled this page and the next seven with illustrations and explanations of a few of the Coulter covers. In subsequent issues, we hope to show more. Many of these covers formerly graced name collections like Knapp, Gibson, Gobie and Juhring; a few Elliott discovered in faraway places.

Elliott's exhibit was entitled: "USA 1869 Issue — International Usages." It was entered in the postal history section at AMERIPEX along with other stirring winners like Lou Grunin's multi-million dollar 1851-57 exhibit.

He had a knack for finding and displaying covers. We have the following examples to show you through the kind cooperation of the Coulter family and the Philatelic Foundation in New York City. I personally hope these serve as an inspiration to all collectors of classic US stamps, but especially to those of us who cherish the 1869 Issue and Re-issue of 1875.

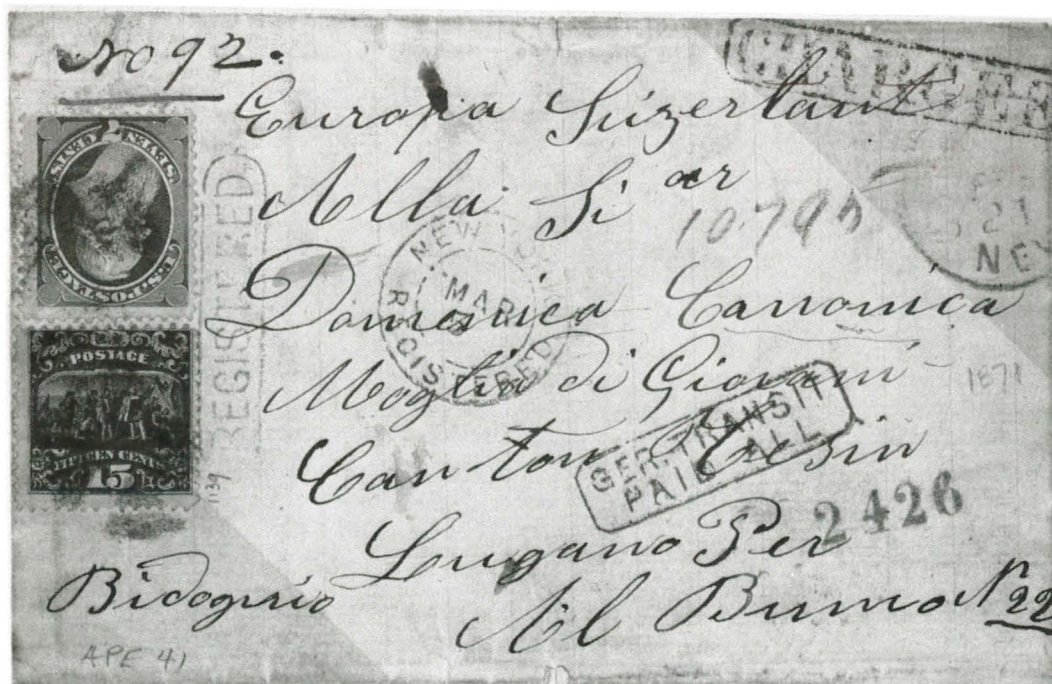
JR



CAPE OF GOOD HOPE — A 10c and 12c 1869 plus a 6c dark carmine National Bank Note Co. Lincoln pay the 28c single rate via British mail to Capetown, Aug. 3, 1870. Note the red "24," 24c credit to Great Britain, and the "1," 1d local delivery charge.



FAYAL, AZORES—Pair of 2c National Bank Note Co. Jeffersons and two 12c 1869s pay the 28c single rate by British mail via England to the Azores, Nov. 18, 1870. Great Britain received 24c credit. "FRANCA" in oval indicates postage paid to destination.

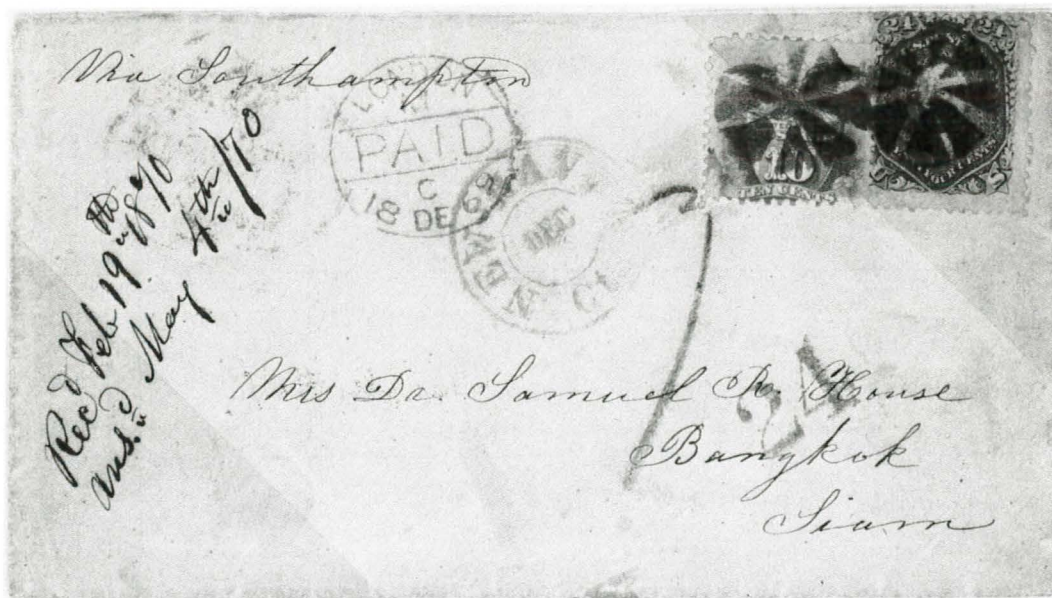


4c OVERPAID TO SWITZERLAND—Another combination franking. A 7c National Bank Note Co. Stanton plus Type II 15c 1869 were affixed by Carson City postal clerk for 7c NGU direct (to Germany) and 15c registration (domestic fee). Correct rate (spotted by New York Foreign Mail office) was 10c via closed mail through England and 8c foreign registry. NY stamped scarce "NEW YORK REGISTERED" in double circle and black "GER. TRANSIT/PAID ALL" in rectangle marking. Sent Feb. 21, 1871.

DESTINATION: SOUTHEAST ASIA

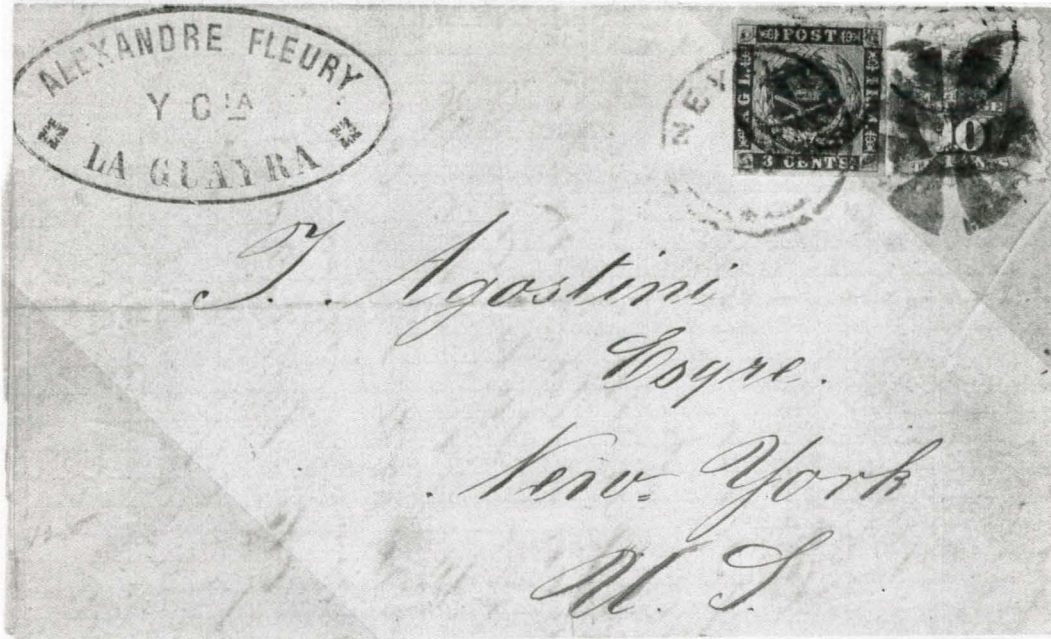


BURMA — Lancaster, PA, to Moulmein, Burma, May 3, 1870. 30¢ rate by British mail via Marseilles, reinstated 1/70 and effective to April, 1871. Red “26” credit to GB and double circle Moulmein arrival datestamp on front. Stamps are Type II 15¢ 1869s.



SIAM — A 10¢ 1869 and 24¢ F grill pay 34¢ single rate to Bangkok, Siam, from New Haven, CT., Dec. 7, 1869. Via England with 24¢ credit to Britain. Cover is ex-Juhring.

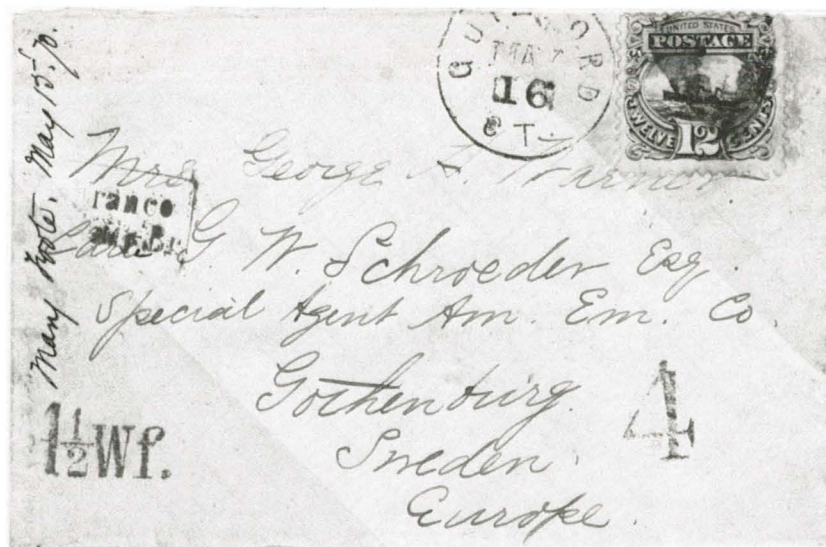
MIXED FRANKING COVERS



CARIBBEAN MAIL from VENEZUELA — Privately taken from La Guayra, Venezuela, to St. Thomas. 3¢ coat of arms carmine stamp for Danish West Indies postage and 10¢ 1869 for US steamship letter rate probably applied at origin. USBMSC packet to NYC, Oct. 8, 1869. One of four such combinations known.



FORWARDED TO FRANCE from ENGLAND—A 6¢ 1869 pays single rate May, 1870 to London from Portland, ME. Pair of Pl. 11 4d vermilion (1865) Gt. Britain stamps pays forwarding charge to France. Cover re-directed back to London.



SWEDEN — A 12c 1869 doesn't quite cover the 14c single rate to Gothenburg, Sweden, on direct service by North German Union via Hamburg, May 16, 1870. Credit of 4c (1.5 silver grsch) to NGU. Red "NEW YORK PAID ALL DIRECT" May 17 on reverse, however.



TO CHINA — Two grilled Black Jacks and pair of 3c 1869s pay 10c single rate to dependent Chinese port of Swatow. Via American packet from San Francisco. Sent, Bristol, NH, Sept. 9, 1869. [Wingate correspondence.]

ASIAN INTERCONSULAR MAIL



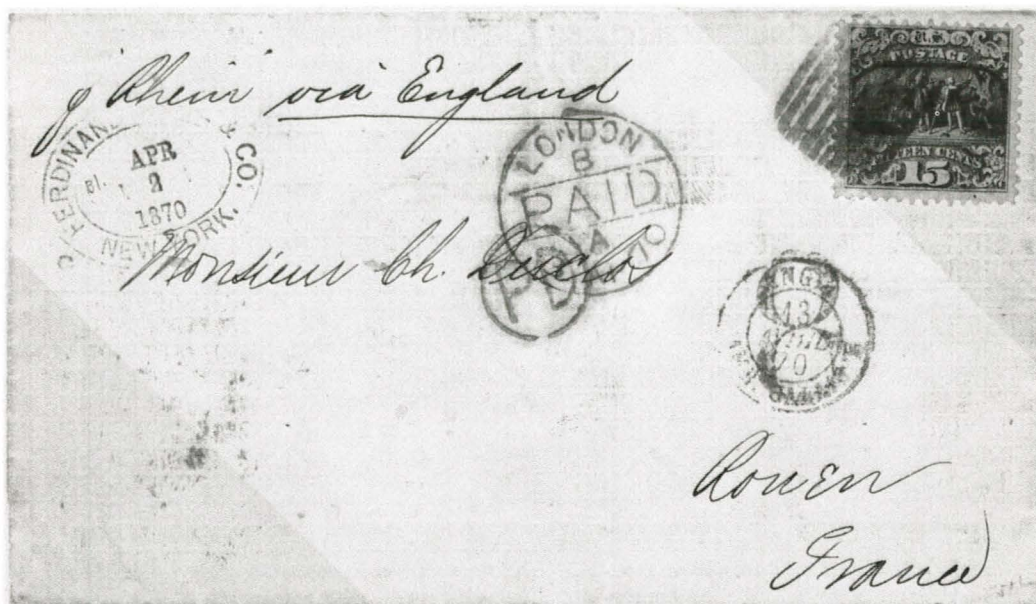
CHINA to JAPAN — Shanghai, China, May 31, 1870, to Nagasaki, Japan. 6c single rate interconsular mail paid by 6c 1869. Again, Pignatelli correspondence. Distinctive Shanghai circle of wedges killer.



WITHIN JAPAN — Yokohama, Nov. 21, 1870, to Nagasaki. Two 2c 1869s overpay 3c single rate by 1c. Pignatelli correspondence.

PHANTOM RATE COVERS

INTER-TREATY MAIL TO FRANCE

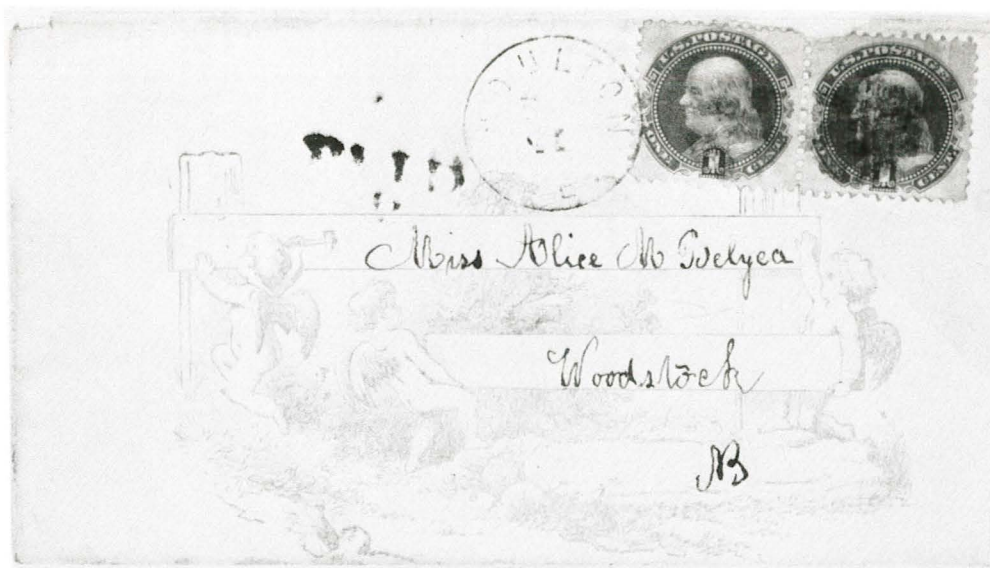


12¢ RATE — This rate paid for a letter weighing less than one-quarter oz. (Fr., 7½ grams). Type II 15¢, prepaying old 15¢ convention rate, is 3¢ overpay. From March, 1870 NY exchange office forwarded some letters to France, via England (8¢ GB credit), providing at least 12¢ prepaid, but this practice was not announced to the public, thus “phantom rate.” Note London “PAID” marking and “PD” in circle, payé á destination. Sent April 2, 1870 from NYC.

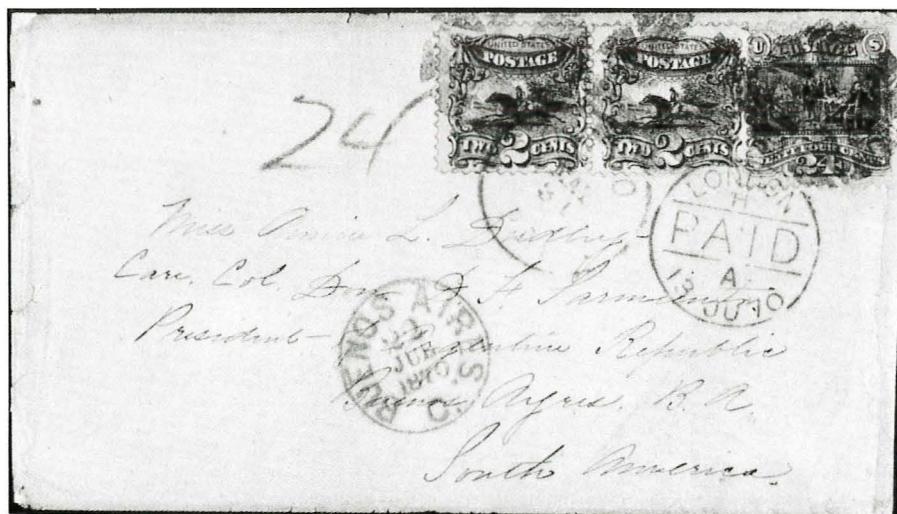


20¢ RATE — Another unannounced rate: 20¢ for approx. one-half to two-thirds oz. (Fr., 7½-15 grams). Two 10¢ fully prepay on this earliest known usage of phantom rate 20¢, Montrose, PA., June 30, 1870 cover. Note red “12” ¢ credit to Great Britain.

USAGES IN THE AMERICAS



2¢ CROSS BORDER — Two 1¢ 1869s pay the special cross-border or ferriage rate in effect between towns sharing a contiguous border, permitting delivery of mail directly to the nearby town. Houlton, Maine, and Woodstock, New Brunswick, were such when this cover mailed Feb. 11, 1870. "PAID 2" near Houlton CDS was mandatory. Probably a valentine letter.



TO ARGENTINA — Pair of 2¢ and single 24¢ 1869 pay 28¢ single rate to Buenos Aires May 31, 1870 from Boston. British mail service via England with 24¢ credit (red "24") to GB. Note London "PAID" for June 13 and Buenos Aires rec. mark, 22 JUL.

All covers illustrated in this article are shown through the kind cooperation of the Elliott H. Coulter family and the Philatelic Foundation, New York City.

1869 COVER CENSUS BOOK



Pair of 3c 1869 pays interconsular rate, Nagasaki, Japan, to Shanghai, China, 1870. Possibly unique.

THE 1869 ISSUE ON COVER: A CENSUS and ANALYSIS

Newest hardbound work from the 1869 PRA, Inc. Edited by Jonathan W. Rose and Richard M. Searing, Ph.D. Contains 223 pages, 41 color and 75 black and white illustrations. Census listings for all values 6¢-90¢, plus the re-issues on cover and mixed franking covers with 1869 stamps. Accompanying articles on all values 1¢-90¢, plus the re-issues and mixed franking covers. Writers include the editors, R. H. (Jim) Stever, Michael Laurence and Stanley M. Piller. The book was released at AMERIPEX '86. Only **250** bound copies are available, **200** regular and **50** deluxe part leather-bound. The book represents 10 years of work by PRA members.

Price: Regular Edition - \$70

Deluxe Edition

(100 copies only) \$125

Order from: Jeffrey M. Forster

99 Almaden Ave., Suite 400

San Jose, CA 95113

Checks payable to: U.S. 1869 PRA, Inc.

WINNER: CHICAGOPEX 1986 Literature Competition, gold, with felicitations of the Jury.

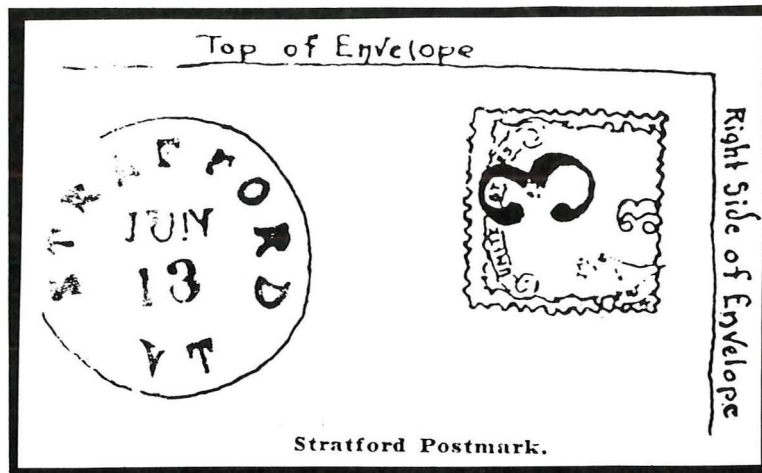
1987 CAPEX Literature Competition (International), Silver.



1869 ISSUE IN PICTURES



LARGEST — We threw down the gauntlet on the cover of *1869 Times 42* to see if we could turn up a larger used piece of the 10c 1869 than the strip of five illustrated there. Michael Laurence, editor-publisher of *Linn's Stamp News* and premier student of the stamp, submitted the illustration above: a used horizontal strip of six with the "N.YORK STEAMSHIP" strike, used from St. Thomas in 1870. Says Laurence: "To my knowledge this is the largest used multiple of the 10c 1869, ex-Seybold, Morgenthau Sale 3/15/1910, lot 203." It sold then for just \$12.75. Much later it was sold as part of the John Juhring holdings. It is part of Michael Laurence's collection today. (Illustration, courtesy of M. Laurence).



Bill Wickert, 1869 PRA secretary-treasurer from Virginia Beach, VA., sent along the illustration above of a portion of a cover showing a 3c 1869 with what appears to be a pioneer pre-cancel strike.

In the January, 1932 *Collectors Club Philatelist* (NYC), writer R. J. Mechin reported that three different Stratford covers were known with the 3c 1869 struck by the black "3" above. The numeral is inked more lightly than the Stratford, VT postmark. In none of the three cases does the "3" tie the stamp to the cover. The covers were used between June 13 and July 1, year date unknown.

In regard to the example illustrated, Wickert notes: "It seems unlikely that the cancellation would be struck as shown with reference to the stamp's design, if the stamp were put on the cover before being cancelled. In all three examples, the "3" strike has the same relation to the stamp design."

AUCTION REPORT



RICHARD WOLFFERS, INC., SAN FRANCISCO, SALE 146, JAN. 19-20, 1988

A small group of exceptional singles were hammered down for high prices. An extremely fine, used straddle-pane copy of the 10c 1869 with '87 PFC (see illustration above) sold for \$190 (\$95). [In all cases in this report, prices reported do not include the 10 per cent buyer's commission; prices in parentheses are Scott 1988 catalog values]. A used 15c Type II with bullseye target cancel went for \$125 (\$120), illustrated above. An unused 90c re-issue, nice color and margins (Sc. #132), sold at \$3,500 (\$5,500), \$500 more than the estimate--only 1,356 issued.

DANIEL F. KELLEHER CO., INC., BOSTON, SALE 577, JAN. 20-22, 1988

This was a large and spectacular sale kicking off Kelleher's 102nd year. There was something for everyone. Sold were copies of all three 1869 inverts, including one of the four known 24c unused. All three Pan American inverts went, with the extra fine, og 2c locomotive (#295a) selling for \$32,500. A straight-edge, unused Jenny, #C3a, went reasonably at \$55,000 (\$120,000). And there were a number of exotic covers, some from the David Beals Collection.

There was a wide range of 1869 essays and proofs. A rare 1c black die essay on ivory (Brazer 112E-Eb) sold for \$1,000 (estimate, \$1,500). The 10c Lincoln die essay on safety paper, carmine on scarlet (B 116E-D14) went for \$1,150, exceeding the estimate. Photo above shows 1c Franklin die essay on ivory.

A proof block of 20 (4 x 5) of the 15c Type III (#129P3) vf with slightly shifted vignette sold at \$5,000 (\$10,200), and a fresh vf set of the four invert plate proofs on card (#120Pa-122Pa, 129Pa) sold for half catalog, \$12,000. In the regular issue stamps a fine og block of four 1c Franklins (#112) went for only \$280 (\$1,000); a slightly inferior 2c og block (4), \$600 (\$725); and a fresh, og block of the 3c locomotive at \$480 (\$625).

A nice og unused copy of the 6c Washington with PFC (See illustration above) sold for \$1,200, well above \$775 catalog. A cover with a fine pair of the 10c to Gothenburg, Sweden, the cover being slightly damaged, sold for a big \$2,500, some \$1,000 above estimate. A used, thinned 15c invert with repair and PFC, still sold for \$7,500 (\$17,500). See illustration p.16. The unused 24c invert, with tiny creases and off-center to the



The Kelleher Sale 1869 Inverts

top right (PFC 41107), ex-Worthington, the only 24c on the market, sold for \$60,000 (\$125,000). Note the lowered vignette, common to all four unused copies. The used, lightly creased and centered high 30c 1869 invert sold for a respectable \$25,000 (\$45,000). The Atlanta trial color proofs sold cheaply--a lot of five of the 90c proofs, for example, went for \$1550 (132TC, \$2,500).

An og (sic), fine 3c re-issue with PFC (#125) sold for \$1,250 (\$2,750). A very rare, toned, off-center used copy with corner perf crease made a mockery of the catalog value (\$1,400), going for \$9,000. Less than ten used copies are known. A well-centered unused 10c re-issue (#127) went for \$1,250 (\$1,400). A slightly toned and creased used 90c re-issue, ex-Krug and L. Grunin, realized a healthy \$4,500 (\$6,000). A very fine block of ten (5 x 2) of the 1c brown orange 1c Franklin (no gum, on soft porous paper) sold for \$1,600 (#133a, \$1,950). The used 3c re-issue is pictured on p.15.

ROBERT G. KAUFMANN SALES 51 & 52, OCT. 10, 1987 and NOV. 21, 1987

The Oct. 10 postal history sale at the Collectors Club in New York City saw some choice 1869 covers go under the hammer. A fetching 1c Franklin (#112) valentine cover with red Belfast, Maine, cancel sold for \$280. A 2c horse and rider on Humbolt advertising cover, very fine, went for \$300. A fine example of the 4c part-paid to France (pair of #113) sold reasonably at \$290. A fine cover with the 12c and 3c 1869s paying the pre-1870 15c rate to France sold at \$250.

The November sale at Elizabeth, NJ, featured the David T. Beals collection of "Gun, Hunting, Fishing, Equine and Sporting Covers." A 6c 1869 on 1870 illustrated "Roper Four Shooting Shot-Gun" cover sold high at \$1,150. Most of the illustrated and ad covers bore stamps from the period after the 1869 Issue.

1869 TIMES CLASSIFIED AD SECTION

This section is open to any person or organization wishing to run a classified ad not to exceed 3 x 3 inches of space for \$15 per insertion. 1869 PRA members who submit an article, preferably with photo(s) or photocopy illustrations, which is accepted, will be entitled to run one free classified ad in a future issue of the *1869 Times*.

NEW MEMBERS INVITED!

U.S. Cancellation Club
APS Affiliate #75

Devoted to the study of U.S. cancellations and postmarks. We publish a lively journal (sample \$1), run a sales department for stamps and covers and encourage cancellation exhibits through USCC awards. Send inquiries to George and Evelyn Lewis, P.O. Box 545, Clearfield, PA 16830.

1869 PRA Literature

available for immediate delivery, postpaid

* = Limited Supply = Less than 10 copies available

1976 Register (Loose Leaf)	\$12.00
1977 Register (Loose Leaf)	\$10.00
<i>(Binder FREE with order for both 1976 & 1977 Registers)</i>	
*1978 Register (Hard Bound) members \$10.00, non-members	\$15.00
1982 Register (Hard Bound) members \$24.00, non-members	\$30.00
Appletons Railway Map of the United States & Canada	
(1977 reprint) of 1869 map	3.00

1869 TIMES

Vol. 1 & 2 Whole # 1 thru 7 (Soft Bound)	12.00
*Vol. 3 whole # 8 thru 11 (Soft Bound)	10.00

Individual Issues available at \$5.00 each after Whole #34. Up to Whole #34, \$2.50 each.

(Discounts available for long runs and quantity purchases — INQUIRE!)

Whole # * 8

* 10

* 11

* 12

* 13

* 14

* 15

16

17

18

19

20

21

22

22 - EXTRA (1975-1980 Index)

24

* 25

26

27

28

29

30

31

32

33

34

35

36

37

38-39

40-41

Please note that Whole #23 is not available presently.
I will entertain inquiries from interested parties desirous
of obtaining a reprinted version produced in limited
quantity.

Make checks payable to: U.S. 1869 P.R.A.

Brad Arch, 144 Hamilton Ave., Clifton, NJ 07011-1224

A LOOK AT 1869 COVERS USED IN VIRGINIA

By William M. Wickert

Because there are so many so-called "common" covers with 1c-3c 1869 stamps, I have made no attempt to analyze their Virginia usages. Unusual 1c covers are completely lacking. I briefly touch on the 2c and 3c bisects used in Virginia. As shown elsewhere in this article, that does not mean that there are no unusual covers around with these two values. See Figure 1, showing a Richmond, Virginia combination cover with the 2c pony rider. Chief source of information for this article is the 1986 PRA publication, The 1869 Issue on Cover: A Census and Analysis. Due to the overwhelming numbers of these 2c and 3c covers, that book featured only short articles for each value, no listings.

Of 28 recorded covers (believed genuine) bearing the 2c 1869 bisected (See The Chronicle of the U.S. Classic Postal Issues 115 (August, 1982), p.209), only one is a Virginia usage. A Tax Notice from Surrey, Virginia, the stamp on the "cover" is a diagonal bisect canceled with manuscript "X."

An interesting sidelight on the 2c bisect cover #23 (See: "2c 1869 Bisects Revisited" Times 11 (March, 1978, p.11), listed by Jon Rose in his article, is that the CDS of June 17, 1870 of Martinsburg, VA is a bit misleading. In 1870 Martinsburg was in West Virginia and had been for nearly seven years. This is another example of a West Virginia postmaster continuing to use a Virginia cancel. Also, see: "Insignificant Covers," my article in 1869 Times 40-41 (May-August, 1987), p.8.

Several years ago another Luray, Virginia, tax notice surfaced, this time with a 2c bisect. See Figure 2 on next page. This latest find is interesting for at least three reasons:

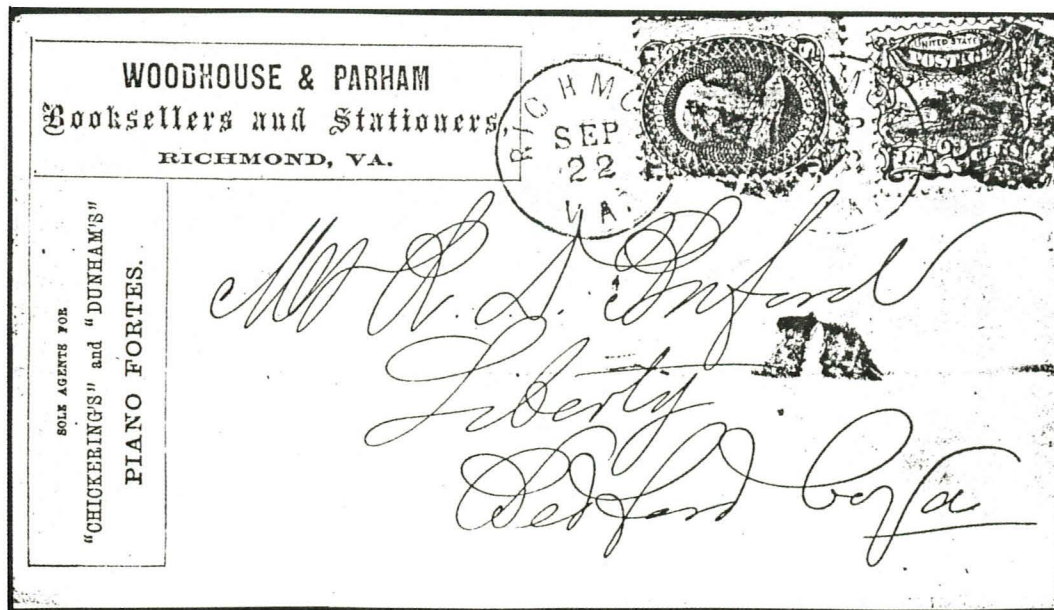


Figure 1. Cover sent Sept. 22, 1869 from Richmond, VA, to Liberty, VA, with 1c 1867 E grill and 2c 1869 paying first class rate. Note Richmond, VA, bookseller corner card advertising.

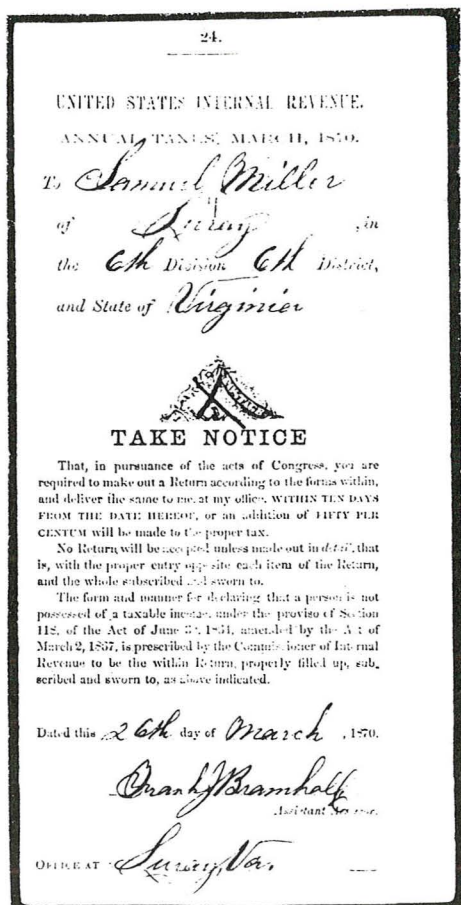


Figure 2. The so far unique 2c 1869 diagonal bisect on complete Luray, Virginia, tax notice, dated Mar. 26, 1870.

- (1) It is the only diagonal bisect known from Luray.
- (2) It is the only 2c 1869 bisect on an entire Luray tax notice.
- (3) It is the earliest known usage of any Luray bisect, March 26, 1870.

The story of the Luray, Virginia, 3c bisects has been told before, and there is no need to rehash it here again.

To conclude the story of the three low values then, it is the 2c and 3c bisects that chiefly arouse our interest. Such studies as the uses of multiples, corner cards or fancy cancels appeal to various specialists, but are outside the scope of this analysis.

We can begin our analysis with the 6c value, and for all intents and purposes end with the 15c Type II. Because of the small number of Virginia covers, we can examine those both entering and leaving the state.

Of 420 covers listed in the census book with the 6c 1869, only five are from Virginia. Three of the five are from Richmond to foreign countries: Scotland, England and Prussia. Of the domestic covers one is from Charlottesville and is addressed to Washington, DC. The other is from Culpepper to Brooklyn, NY. These five covers were posted in the period, 1869-1873.

Virginia usage is about as scarce with the 10c 1869. Of a total of 1,038 covers listed, there are four leaving Virginia and four entering. The four exiting all went to foreign destinations: British Honduras, China, Germany and Italy. Of the four entering Virginia, three are from Shanghai, China, and the remaining one is from Baltimore. These covers were used during a period of two and a half years, from November 4, 1869 to Feb. 2, 1871.

With a reported 423 covers franked with the 12c 1869, Virginia claims only six. All were sent from Virginia, four to Great Britain and the other two to US cities. For unexplained reasons, all these covers were mailed within a six-month period, May 11, 1869, to Oct. 30, 1869.

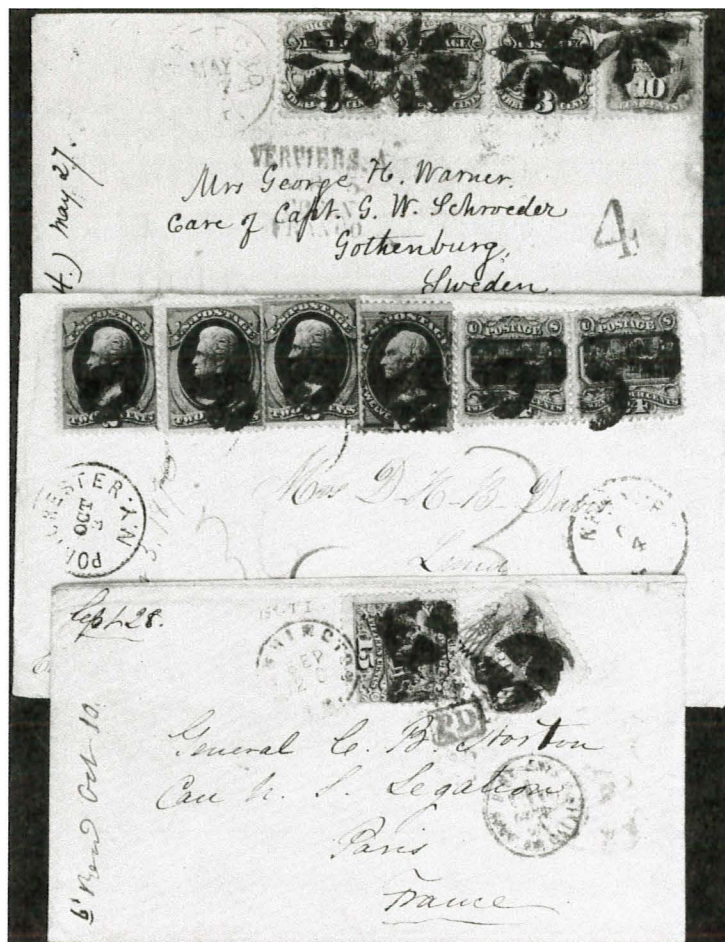
There are two types of the 15c 1869. None of the Type I 15c covers listed was either to or from Virginia. With the Type II 15c it is a different story. Ten Type II 15c 1869 covers had Virginia origin or destination, five incoming and five outgoing. None went to a foreign country. Of the ten, only six covers had clear dates of usage. All six were sent between February and October, 1870.

The census book lists 72 covers with the 24c stamp and 58 with the 30c.

Either one or two 90c 1869 covers are believed extant. There are no Virginia oriented covers with the top three values, nor any mixed franking covers. The census lists about 2,600 covers, of which about one per cent saw service into or out of Virginia. See the table below. I believe there are more 1869 Virginia covers.

TABLE I

Origin/Destination	Date	Stamp(s) Used
SIX CENT		
Charlottesville, VA/Wash., DC	10/10/69	115 + U59
Culpepper, VA/Brooklyn, NY	3/30/70	115 (3) + 114 Registered
Richmond, VA/???, Scotland	6/27/70	115
Richmond, VA/Liverpool, Eng.	6/13/71	115
Richmond, VA/Prussia	7/11/73	115
TEN CENT		
Baltimore, MD/Liberty, VA	7/ 8/69	116 (2) + 113 (2) 8 x 3c rate
Appomattox CH, VA/China	11/ 4/69	116
Shanghai, China/Appomattox, VA	3/13/70	116 (2)
Fincastle, VA/Br. Honduras	3/30/70	116
Richmond, VA/Germany	3/18/70	116
Shanghai, China/Appomattox, VA	5/12/70	116 (3)
Shanghai, China/???, Italy	7/12/70	116 (2)
Culpepper, VA/???, Italy	2/ 2/71	116
TWELVE CENT		
Portsmouth, VA/Philadelphia	5/11/69	117 + 114 (1) + U58 Registered
Steeles Tavern, VA/London, Eng.	6/ 4/69	117
Steeles Tavern, VA/London, Eng.	7/ 2/69	117
Richmond, VA/Independence, MO	8/22/69	117
Richmond, VA/Maidston, Eng.	10/30/69	117
Norfolk, VA/???, Eng.	10/-/69	117
FIFTEEN CENT TYPE II		
Washington, DC/???, VA	2/10/70	119 + 114 (1) + U58 Registered
NYC/Waterford, VA	4/ 7/70	119 (2)
Dayton, VA/???, VA	4/ 9/70	119 + U58 Registered
Omega, VA/Black Walnut, VA	5/ 5/70	119 + U59 Registered
Norfolk, VA/Louisburg, NC	5/17/70	119 + U58 Registered
Luray, VA/Manchester, PA	10/-/70	119 + 147 (1) Registered
Jasper, IN/Esterville, VA	4/15/-	94 (1) + 119 Registered
Oxford, NC/???, VA	10/21/-	119 + 114 (1) Registered
Covington, VA/Albermarle City, VA	11/25/-	119 + 114 (1) Registered
Livingston, TN/Fincastle, VA	-/-/7-	119 + 147 (2) Registered + 2 x 3c



Top to Bottom: 19¢ rate to Sweden from the Warner correspondence;
two 24¢ 1869s with Bank Note stamps on Davis cover to Peru; 15¢ Type I
and 30¢ on cover to France from the Norton correspondence,
ex Knapp, Juhring.

The Walter C. Klein Collection of United States

Christie's is pleased to announce the series of five auctions in 1988-89 which will disperse The Walter C. Klein Collection of United States Stamps and Covers.

Included among more than 2,000 lots are outstanding singles, blocks and covers of the 1869 Pictorial Issue and the 1875 Re-issue. Single unused stamps will be included in Part One, June 15-16, 1988. Further portions will be offered in subsequent sales.

The pre-sale Preview (35 color pages) is available on request:

Christie's Stamp Department
502 Park Avenue
New York, N.Y. 10022



CHRISTIE'S
ROBSON LOWE



DO YOU COLLECT U.S. OR WORLDWIDE STAMPS AND POSTAL HISTORY? ARE YOU A SPECIALIST?



WHAT IS A SCHIFF "ESPECIALLY FOR SPECIALISTS"® AUCTION?

It's an auction designed with YOU in mind. Whether you are a buyer or a seller—each specialized area of collecting is listed in a separate section, making it easier for BUYERS to locate lots of particular interest and for SELLERS to realize maximum exposure for their material.



If you do not get our catalogues you are missing out! Send \$8.50 (\$12.50 overseas) for a full year's subscription to Schiff auction catalogues and prices realized or send \$1.00 (\$1.50 with prices realized) for a Sample copy of our next sale. If picked up at our office the catalogue is complimentary.

We invite you to consign individual stamps or covers, entire collections or estates—for unreserved Public Auction or Private Treaty Sale. WE ALSO PURCHASE OUTRIGHT! Contact us first, describing your material. Include your address and telephone number(s).



Jacques C. Schiff, Jr., Inc.

195 MAIN STREET
RIDGEFIELD PARK, NEW JERSEY 07660
Phones: (201) 641-5566 — From N.Y.C. 662-2777
Licensed & Bonded Auctioneers—Established 1947



OUR COMPREHENSIVE 1869 STOCK

*INCLUDES MANY ESSAYS (including rarer ones),
PROOFS, STAMPS (all values unused and used),
AND COVERS.*

WHAT DO YOU NEED?

SELECTIONS GLADLY SENT ON APPROVAL AGAINST SPECIFIC REQUESTS.

MAY WE HEAR FROM YOU ?

Satisfaction or Immediate Refund — Gladly Sent on Approval with References
Installment Payment Terms if Desired — (No Interest or Carrying Charges)

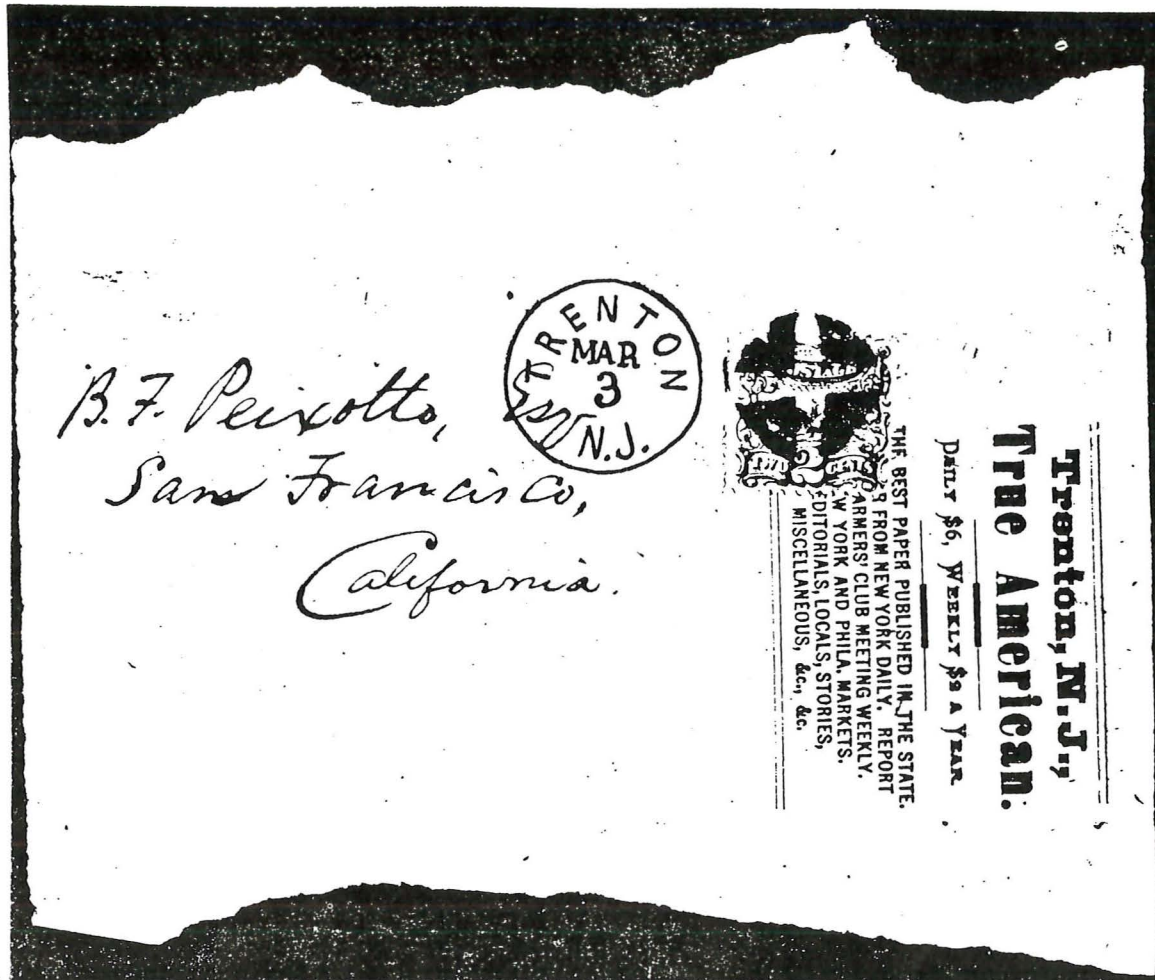
JACK E. MOLESWORTH, INC.

APS
SPA

88 BEACON ST., BOSTON, MASS 02108
(617) 523-2522

CSA
USPCS

LAST LOOKS



Rarity is sometimes more than skin deep, as shown by this ratty-looking 2¢ 1869 tied on an advertising newspaper wrapper from Trenton, NJ, to San Francisco. Wrappers are like “junk” mail today, items quickly disposed then and now. (Photocopy illustration courtesy of Brad Arch from the Journal of the New Jersey Postal History Society.)



This 1¢ Franklin feast is from the Clifford C. Cole Jr. sale of US held Feb. 24-26, 1988 by Robert A. Siegel Auction Galleries, Inc., NYC. Note Waterbury, CT “maple leaf” (822) and “holly sprig” (823).

UNIVERSITY STAMP
UNIVERSITY STAMP
UNIVERSITY STAMP
UNIVERSITY STAMP
UNIVERSITY STAMP
UNIVERSITY STAMP
UNIVERSITY STAMP
UNIVERSITY STAMP
UNIVERSITY STAMP
UNIVERSITY STAMP
UNIVERSITY STAMP
UNIVERSITY STAMP
UNIVERSITY STAMP
UNIVERSITY STAMP
UNIVERSITY STAMP

University Stamp Co., Inc.

"Taking a Scholarly Approach to the Classics"

We are interested in purchasing your 1869 and all other U.S. material; single items, duplicates, entire collections, proofs, essays, multiples, covers, fancy cancels, rarities.

Sell to one of the world's most aggressive and highest paying buyers

Call
(203) 329-7494

24 Hours

or write

University Stamp Co., Inc.

P.O. Box 4784
Stamford, CT 06907



CCNY



1869 PRA

Ventura Stamp Company

Affiliate University Stamp Co., Inc.

Offers you an opportunity to take part in our fabulous quality U.S. net price list; a fully illustrated list with many 1869 items and other U.S. singles, mint, used, fancy cancels, multiples, proofs and covers. To receive your complimentary copy call...

(203) 968-2803

or write

Ventura Stamp Company

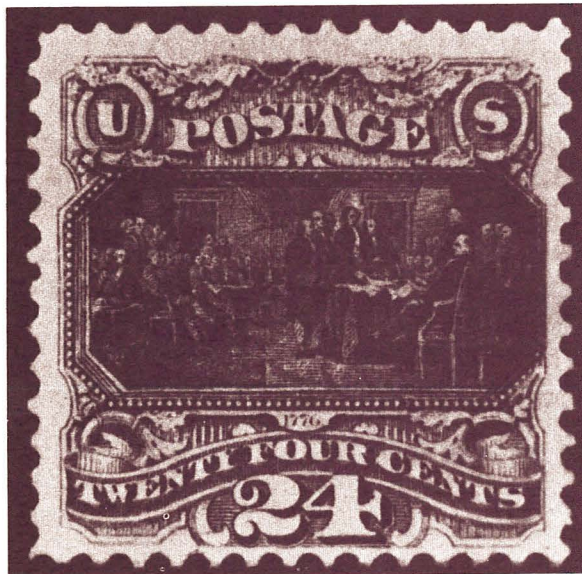
P.O. Box 4760
Stamford, CT 06907



VENTURA STAMP
VENTURA STAMP
VENTURA STAMP
VENTURA STAMP
VENTURA STAMP
VENTURA STAMP
VENTURA STAMP
VENTURA STAMP
VENTURA STAMP
VENTURA STAMP
VENTURA STAMP
VENTURA STAMP
VENTURA STAMP
VENTURA STAMP
VENTURA STAMP



***THINK QUALITY. EXPECT QUALITY. GET QUALITY.
COUNT ON WOLFFERS QUALITY EDGE.***



NEXT SALES

JUNE, AUGUST, OCTOBER, 1988

Catalog, including realizations for previous auction, 4 weeks before sale. Send name, address and \$3.00. VISA and MASTERCARD accepted

RICHARD WOLFFERS, INC.
Stamps of quality Stamp Auctions of integrity

127 Kearny Street, San Francisco, California 94108 • Tel. (415) 781-5127



Recognized Buyers

Roger G. Weill • Raymond H. Weill

Raymond H. Weill Co.

at 407 Royal Street

in New Orleans