

1869 Times

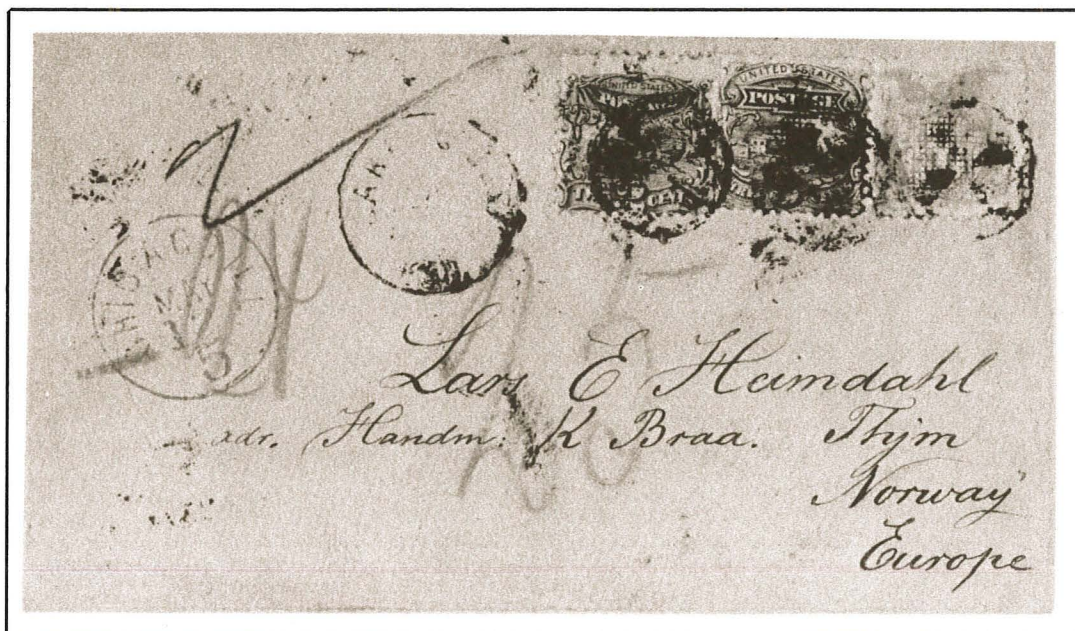
QUARTERLY JOURNAL OF THE U.S. 1869 PICTORIAL RESEARCH ASSOCIATES, INC.

February, 1985

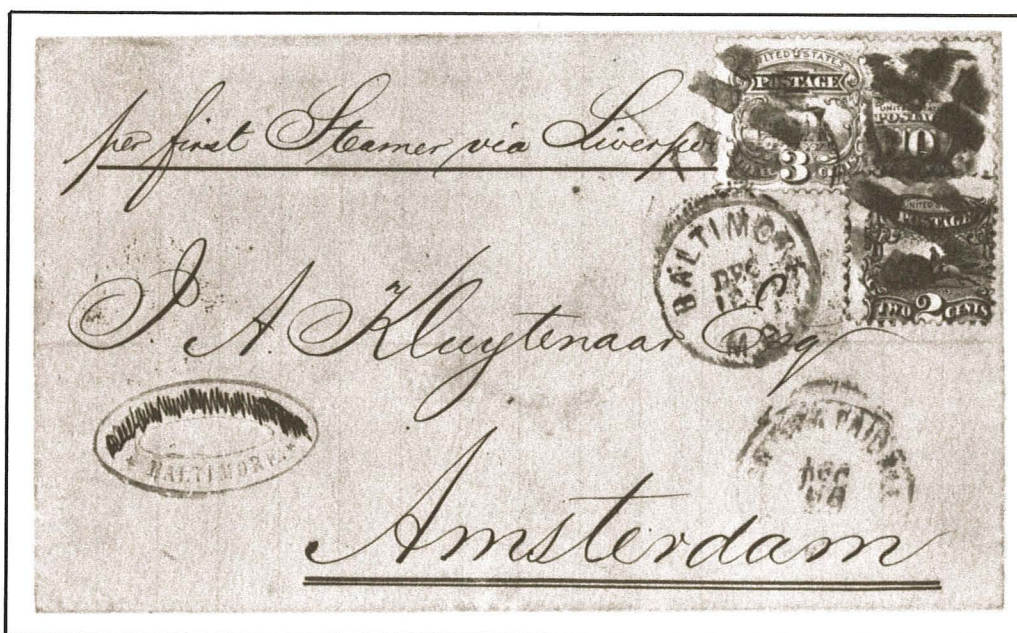
Price \$5.00

Whole No. 31

Vol. 9, No. 1



INSIDE . . . The 10c 1869 cover census listing—as complete as they come
 The 90c Lincoln bi-color—the exotic and the unusual
 Phantom Rates Revisited—and Beyond



The U.S. 1869 Pictorial Research Associates

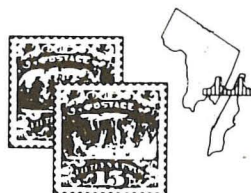
. . . dedicated to the advancement of knowledge through research and study of the 1869 issue.

1869 ISSUE

AS WELL AS ALL CLASSIC
UNITED STATES ISSUES
STAMPS AND COVERS
AVAILABLE

ROBERT A. SIEGEL, INC.

160 EAST 56th ST. - NEW YORK, NY 10022



SELECT THE PUBLIC AUCTION

*"For Discriminating
Collectors, Investors &
Dealers"*

Especially For Specialists®

SCHIFF AUCTIONS FEATURE:

U.S., U.N., WORLDWIDE STAMPS & POSTAL HISTORY

BUYERS: Bid by phone, by mail, or in person. Bids executed without charge. A premium of 10% is added to the "Hammer" price as part of the total purchase price.

To secure our next auction catalog, remit \$1. (or) \$1.50 for catalog and prices realized. One year subscription \$8.50, Overseas \$12.50.

SELLERS: Commission is only 10% of prices realized—no lotting charges. Contact us before sending stamps for minimums acceptable.

WE ALSO PURCHASE OUTRIGHT!

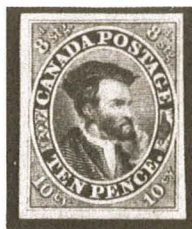
Jacques C. Schiff, Jr., Inc.

195 MAIN STREET

RIDGEFIELD PARK, NEW JERSEY 07660

Phones: (201) 641-5566 — From N.Y.C. 662-2777

Licensed & Bonded Auctioneers—Established 1947



Quality 19th Century Stamps and Covers of
The United States and British North America.

VICTOR B. KRIEVINS

Professional Philatelist

P.O. Box 373

Bryn Mawr, PA 19010

1869 Times

Quarterly Journal of the
U.S. 1869 Pictorial Research Associates, Inc.

© Copyright 1984, All Rights Reserved
U.S. ISSN 0363-6542

Published by
The U.S. 1869 Pictorial
Research Associates, Inc.
30 Golf Road

Pleasanton, California 94566-9751

Membership in the 1869 P.R.A.
is available upon application.

Membership dues are \$15.00 per year
Initiation fee (paid once) \$2.00



SOCIETY OFFICERS

KENNETH R. LAURENCE
Chairman of The Board and President
13005 Keystone Terrace
North Miami, Florida 33181

JEFFREY M. FORSTER
Vice-President
99 Almaden Boulevard, Suite 400
San Jose, California 95113

VICTOR B. KRIEVINS
Secretary-Treasurer
P.O. Box 84
Glenside, Pennsylvania 19038

JONATHAN W. ROSE
Editor and Director
30 Golf Road
Pleasanton, California 94566-9751

DIRECTORS

ELLIOTT H. COULTER
Sterling Road
Harrison, New York 10528

JOE H. CROSBY
City Service Building, Box 300
Tulsa, Oklahoma 74102

WILLIAM T. CROWE
P.O. Box 214
Danbury, Connecticut 06810

JEFFREY M. FORSTER
99 Almaden Boulevard, Suite 400
San Jose, California 95113

FROM THE EDITOR-IN-CHIEF

Those faithful members of the 1869 Pictorial Research Associates, Inc. family who are reading this issue of the Times, #31, will notice that it is eight pages longer than the previous issue, November, 1984, #30, in which we reported on the 12c cover census. This issue could have been doubled in size—to 48 pages—but I have chosen to save a lot of fire for the upcoming May, 1985 Times. In that issue, you will find articles on auction results as well as Type II 15c and 6c (hopefully) census listings, photos and articles, prepared by our in house statistician, Richard Searing, Ph.D. Without Dick's work we would have no census and no book in 1986. And, without the help of the various census coordinators, Searing would have no grist to mill.

In this issue of the 1869 Times, you will note that there is a bit more meat, as one letter writer put it. Your editor discusses some of the more exotic aspects of the 90c Lincoln, one stamp which is seldom discussed in much detail.

There is a new section (p.9)—and hopefully a permanent one—where news developments and problems are made manifest. Here, reader comments are solicited.

Elliott Coulter, the destination man and jefe of the Philatelic Foundation, takes us through the phantom rate maze one again—with feeling—and then out beyond into the light.

Way back in October, 1983, 10 or 12 of us exhibitor types attended CHICAGOPEX '83. Prior to that the 1869 Times suspended production, so PRA members never had a chance to find out what happened in detail when 1,100 pages of 1869 material were displayed all at one, in one place. At long last, in this issue you can find out. That show was a precursor to AMERIPEX '86.

Finally, we learn all there is to know in outline form about 10c 1869 covers.

1869 Times

February 1985
Price \$5

Whole No. 31
Vol. 9, No. 1

EDITORIAL BOARD

Jon Rose, *Editor-In-Chief*
30 Golf Road,
Pleasanton, California 94566-9751

Contributing Editors

Richard M. Searing, Ph.D.
cover census coordinator

Scott R. Trepel
fancy cancels

Rex H. (Jim) Stever
1869 Specialized Catalog

William T. Crowe and Elliott Blum
Auction News

PUBLICATIONS SALES DIRECTOR

Elliott Blum, 787 Cornaga Avenue,
Far Rockaway, New York 11691

ADVERTISING MANAGER

Victor B. Krievins, P.O. Box 84,
Glenside, Pennsylvania 19038

DIRECTORS

LEONARD KAPILOFF, DDS
Box 1272, Rockville, Maryland 20850

VICTOR B. KRIEVINS
P.O. Box 84, Glenside, Pennsylvania 19038

KENNETH R. LAURENCE
13005 Keystone Terrace, North Miami, Florida 33181

RICHARD M. SEARING, Ph.D.
P.O. Box 1174, Yorba Linda, California 92686

REX H. (JIM) STEVER
Director & Past President
First City Bank Tower, Corpus Christi, Texas 78477

MARGARET L. WUNCH
Vice-President Emeritus

ON THE COVER

On the cover of Times #31 we see at top the only 10c 1869 cover so far recorded used to Norway, a May, 1870 usage from Carbondale, Illinois, to Thym, Norway, displaying well the 15c direct rate via the North German Postal Union. This rate was effective for less than a year: July 27, 1869-June 30, 1870. The red Chicago credit 5 marking (left) is seldom seen.

Below the Norway destination gem is the only recorded 10c 1869 cover to the Netherlands, posted at Baltimore on Dec. 29, 1869. The 15c Treaty rate represented by this cover was in effect between Jan. 1, 1868 and Jan. 31, 1870.

* * *

VOLUNTEERS FOR THE GREAT 1869 COVER CENSUS

90c, 30c & 24c—Dr. Richard M. Searing, Box 1174,
Yorba Linda, CA 92686

15c Type I—Jon W. Rose, 30 Golf Road,
Pleasanton, CA 94566; and Elliott Coulter,
Sterling Road, Harrison, NY 10528

15c Type II—Robert H. LeBow, M.D., 303 12th
Avenue Road, Nampa, Idaho 83651

12c Covers—Jim Schreiber, 2720 McKinley Road,
Chelsea, Michigan 48118

10c Covers—Michael Laurence, Linn's Stamps
News, Box 29, Sidney, Ohio 45365

3c Covers—Rex H. (Jim) Stever, First City Bank
Tower, Box 167, Corpus Christi, Texas
78477

2c Covers—Jon W. Rose, 30 Golf Road, Pleasanton,
CA 94566

1c Covers—John Birkinbine II, 7225 N. Oracle
Road, Tucson, AZ 85704

All 1869 Re-issue Covers—John Birkinbine II, as
above, or Stanley M. Piller, 3351 Grand
Avenue, Oakland, CA 94610

Mixed Frankings—(Covers with 1869 Issues plus
stamps of one or more countries other than
US), Jeffrey Forster, 99 Almaden Avenue,
Suite 400, San Jose, CA 95113

Census Leader: Richard M. Searing, Ph.D., as above

The Ninety-Cent 1869

Multiples, Cancellations and Printing Varieties

By Jon W. Rose
1869 Times Editor-In-Chief

Almost nothing has been written about the aristocrat of the 1869 set, the 90c Lincoln. This is not surprising to those collectors who have tried to obtain a choice used or unused, original gum copy. There are few anywhere.

Even with sufficient funds and incentive, you will seemingly be searching for few cancellation varieties, almost no printing "deformities" like plate cracks, wild off-centers and transfer varieties. Covers are virtually non-existent (one actual, a few rumored) and blocks number by my admittedly incomplete count just an even dozen. There seem to be even less pairs and strips.

There are perhaps three or so shade varieties, depending on your color acuity. There are only five different color cancels, and one is a pen marking. Two are extremely rare: green and purple (manuscript). Normally, the stamp is struck with a black killer, often heavy, usually ugly; once in a while with a red one and, very rarely, some sort of odd strike in blue—leaving out the French transit markings.

Multiples consist of pairs, strips of three and seven and blocks of four and six, used and unused. Readers please advise. What follows is a listing of multiples known to me, larger than pairs. Some are illustrated:

- (1) Vertical block of six, unused, og, bright colors (carmine rose and black), two horizontal by three vertical (2 x 3), Ex-Caspary (H.R. Harmer, Inc., Sale 6, 11/19-21/'56, sold for \$2,300 (cat. about \$2,500); later sold for \$18,000; now in PRA member's collection in East; current catalog, \$65,000.
- (2) Vertical block of six (2 x 3, as above), "superb, deep carmine and black, as described Arthur Hind Sale, 11/20-24, '33, sold for \$1,200 against cat. of \$1,600. Illustrated on next page.
- (3) Block of four, unused, og, centered well left and high; deep carmine and black; reinforced, rejoined perfs, grill breaks, bottom right stamp may have tiny thin, 1984 PFC, Suburban Stamp Co., lot 105, sale of 10/24/'84; also Peter Kenedi, lot 67, sale of 1/25/83.
- (4) Block of four, unused, og, PFC #27421, ex-Green; ex-Lilly (Part 7, 2/7/68, lot 119, sold for \$11,500; carmine rose and black, centered to top. Now in Ryo Ishikawa Collection. Illustrated on next page.



Figure 1. This is one of two known unused blocks of six—the Hind specimen. It is in the deep carmine and black hues and is #2 on the list in the article. Note the choice centering for a piece of this size, as well as the separations between the first and second horizontal rows. This gem sold for \$1,200 in 1933 at Charles J. Phillips' sale in New York City, 11-20-'33, lot #403.

piece, illustrated in Brookman, VOL.II, p.186. Ex-William West Collection, sold 4/26-30/1943 by P. Ward, lot 1130. Lightly canceled, centered top, left. Last sold R. Siegel Sale #583, 1.597, 7/23/81, at \$28,600. See Photo p.5.

- (12) Block of four, used, Hirzel Collection, see Times #30, p.13.
- (13) Strip of seven (?), used, carmine and black, centering reasonable, some separations, typical black killers, largest piece known. In holdings of Texas dealer at STAMPSHOW '84, Dallas. Asking price in area of \$13,000. Vertical format.
- (14) Strip of three, used, carmine and black, centered somewhat right, black killer bars cancels. Sixth Caspary Sale, lot 425, H.R. Harmer, Ltd.

- (5) Block of four, unused, og, carmine and black, centered high and left, Charles A. Hirzel Collection, Berne, Switzerland (See Times #30, Nov., 1984, p.14).
- (6) Block of four, unused, og, carmine rose and black, centered northwest, Hirzel Collection, see Times #30, p.14.
- (7) Block of six, 3 x 2, used, dark carmine and black, light cancel, centered right and high, black circles of wedges cancels, ex-Oliver S. Picher Collection (Sold by P.H. Ward, 10/23-24/ 1946, lot 576, est. \$2,000, sf \$1,750; from Gibson Collection; now Hirzel Collection, Berne, see Times #30 for photo, p.13.
- (8) Block of four, used, PFC (genuine, twice: "cleaned, repairs, and no parts added, genuine," heavy black killers, centered left and slightly high; whereabouts unknown.
- (9) Block of four, used, PFC, states: "Genuine with a few minute defects;" centered to top and right, cuts top horizontal pair, right stamp damaged, heavy cancels. Whereabouts unknown. (See Photo p.5.)
- (10) Block of four, used, medium carmine rose and black, scuffed, centered right (perfs touch) and low, black cork segments cancels (Block illustrated in Ryo Ishikawa Collection book).
- (11) Block of four, used, carmine and black, perhaps most celebrated used



Figure 2. The Green, Lilly, Ishikawa unused block of 4, #4 on list, one of four known.

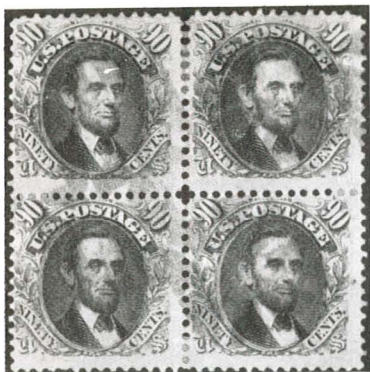


Figure 3. This genuine block of four with heavy cancels (#9 on list), off center and top right stamp damaged is typical of the used 90c 1869 stamps.

Figure 4. Directly left is the ex-West block illustrated in Brookman, which sold for \$28,600 in 1981



Figure 5. Above is the used strip of three from the Sir Nicholas Waterhouse Collection, off-center with light cancels. It is #16 on the list and one of three such strips known. In addition to the multiples listed in the article, there are perhaps five or six used pairs known to the writer.

- (15) Strip of three, used, carmine and black, F.W. Pickard Collection, sold by Eugene Klein, 8/14/1940, APS Convention, Buffalo, NY, lot 279: "fair centering, cat. then \$250; currently in stock of Eastern dealer, cat. value, \$4,250. Piece also has blunt perfs, rounded corners.
- (16) Strip of three, used, also horizontal (See Fig.5 above). Sold for £67/10 at the June, 1955 Waterhouse Sale in London, against £100 est. and Scott \$425. Sold at another Harmer, London sale in November, 1958 (#2834, lot 108) at £125.

Putting together a page of 90c stamps with various cancellations is tough but not impossible--just expensive. The Scott US Specialized for 1985 isn't much help here. It lists: blue, red and black town. They are given premiums of \$100, \$200, \$200 over the base \$1,250 used price. This is ridiculous.

In 1977 I did a survey, reported in The 1977 Register, pp.79-84, in which I surveyed 506 used copies of the 90c stamp from auction sales and personal observation, harking back to 1933 and 1963, respectively, and found the following:

Of the 506 used copies, 448 had black cancels, 43 had red, 13 blue, one green and one purple (manuscript). Of the black, only 11 were town cancellations; of the red, only three. On that basis after black killers, red cancels are the commonest and should be worth **about** \$250 plus; blue about \$750, or \$2,000 per stamp; black town, \$750 plus, or \$2,000 plus total; red town, at least \$1,000 premium, or \$2,500 total; and green or another almost unique color some three times factor or \$3,750 (\$2,500 premium). Doesn't that ring better? At least on a relative basis. Scott is decades behind on this.

That is not the only problem. There are other, special purpose cancels in existence. For example, I list the following legitimate examples: NYFM Type C1 (Waud-Van Vliissingen), REGISTERED, "PAID ALL," "PAID," black star, bee, NYFM S19



Figure 6. On the left is a very fine used 90c 1869 cancelled by the typical black cork killer, as well as a partial blue, dated French transit marking in lower left. Blue killer cancels are very rare. At right is a fine used 90c, struck only with a red New York City "PAID" in CDS for Mar.27,18??, possibly 1870, but could it be 1869? [Jon Rose Photos]

or S17 NYFM, four-ring target, and black so-called Maltese Cross. There are various cork fancies.

The stamp which really rekindled my interest in 90c Lincoln varieties is the example with freak centering pictured on p.7. It is overall a rather nice used copy centered radically upwards and showing a fair portion of the stamp beneath it. It is cancelled with a red cork killer of the type usually found in black. The plate guideline is evident at right. I acquired this sound copy at a European auction several years ago. Has any reader seen another like this or "worse"?

A number of printing flaws are known on the 90c, including a cracked plate variety similar to that shown in the left hand stamp of the 1c 1869 pair pictured in Fig.10 on p.7. This photo is courtesy of our good friend and ex-editor, Ben Chapman. A 90c stamp with a cracked plate fault appeared in the F.W. Pickard Collection sale of Eugene Klein, Aug. 14, 1940. That sale featured 35 unused and 207 used copies of the 90c Lincoln.

Other printing varieties in the Pickard material included examples of short transfer at left, shift in lower left portion of the design, dot in "O" of "POSTAGE," dot in collar, dash in "9", dot in "O" of "90," and the above-noted cracked plate. I have also seen a copy with apparent short transfer at top. There were also copies showing overall dry printing and others with minor plate scratches.

Four pieces bearing 90c stamps allegedly tied have been submitted to date to the Philatelic Foundation. The latest is tied by a cork killer, or could be so construed, and the piece also has a Savannah, GA. CDS for Dec.11. The three 90c on pieces items submitted so far (May 10, New York; New Orleans; New York "STEAMSHIP") and examined all bear the same judgement: Did Not Originate.



Figure 7. At left is a "large" copy with black waffle grid killer. Compare this with the perfectly centered "small" copy on right with an exceptionally light black killer. Which of the two would you rather have?
[Jon Rose Photos]

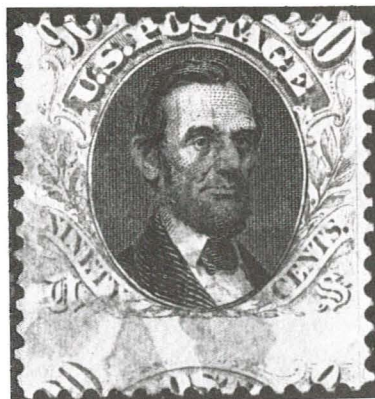


Figure 8. At the far upper right is the freakishly centered copy of the 90c Lincoln with light red cancel described on p. 6. To the right is one of the 100 issued card plate proofs with inverted "center," showing misalignment of the vignette and light shade of the carmine in frame.

Writing in *McKeel's Weekly* (July 28, 1961) Philip H. Ward, Jr. penned the following:

"Emerson C. Krug who has long been interested in our early stamps on the entire cover, sends us a clipping which reads "Examples of the 90c stamp of 1869 on cover are really scarce (!). Just how scarce they are is indicated by the fact that the (Saul) Newbury Collection didn't contain an example on cover."

The article goes on to tell how the late Mr. Krug purchased for \$375 a 90c 1869 on cover, which was subsequently condemned by Stan Ashbrook. The cover was reputed to bear copies of the 3c, 10c and 90c 1869 at one time, but all except the 3c stamp had "fallen off." We all know of such stories.

Ward had never seen such a cover and was eagerly seeking one for his collection at that time. He noted: "There is no reason why such a cover should not exist, for they have found enough of other denominations on one cover to make up more than a 90c rate. Unfortunately, the 90c was only available in the larger post offices and as far as we know, no genuine cover with a 90c exists.

We all know of the ex-David Baker, James Bancroft, Calcutta, India "Ice House" 90c cover (with 10c and 12c Bank Notes) now in limbo. But rumors have

Figure 9. At right is the 1c Franklin pair showing plate crack in left stamp, a printing variety also known on the 90c stamp. Other printing flaws are alluded to on p. 6 and others may exist.



Figure 10. Centered, unused, og copies are rare.

surfaced that a 90c "Gomez Correspondence" cover may exist today in Spain, possibly in the hands of a dealer in either Barcelona or Madrid. We will keep you informed.

THE 1982 REGISTER

The United States 1869 Pictorial Research Associates is pleased to announce publication of its fourth *Register*, hard-bound book containing original research articles on 1869 postal material. Printed on high quality, coated paper, this second bound work contains numerous illustrations, both in black and white and color, the color plates being a first for the 1869 PRA and *The Register*. Students of classic U.S. stamps and, especially, postal history are invited to add this significant work to their philatelic libraries.



CONTENTS

| | |
|---|---------------------------------------|
| 10¢ 1869 Covers to Germany | Michael Laurence |
| 1869 Stamps and Re-Issues Used on Stamped Envelopes and Wrappers | Margaret L. Wunsch & Jonathan W. Rose |
| Three-Cent 1869 Plate Number Stamps on Cover, With Theories on Plate Usage | Rex H. Stever |
| The Port Chester Find: A Great Moment in U.S. Philately | Elliott H. Coulter |
| Mixed Franking Usages of the 1869 Issue | Jeffrey M. Forster |
| 1869 and 1870 Calendars | |

The 1982 Register: Retail Price — \$30 Each
PRA Member Price — \$25 Each

Make checks payable to "1869 PRA" and mail to;
Victor B. Krievins, P.O. Box 84, Glenside, PA 19038

PAST, PRESENT & FUTURE

I feel as editor that you, the reader, the collector or dealer interested in the 1869 Issue and re-issues, has something to say. You want a place to speak out on anything having to do with the ever-fascinating set of 11 stamps issued 116 years ago.

This first stab at communication between journal and reader will be a catch-up review of some developments which have occurred in '69 World since the issuance of Times #29 in May, 1983. It is true that Times #30 appeared in November, but this was a bridge spanning the long period between the spring of 1983 and Christmas 1984. Now that we have crossed the bridge, let us look back for a few minutes, then move ahead. I welcome any comments, opinions and positive suggestions from readers about the 1869 Times and the 1869 Issue itself. Let's hear it. This is your page.

* * *

PRA Member Sidney Emery collects Harriet B. (Hat) Shaw covers, and he has some dillies. Many have the 2c horse and rider, and he has been religiously sending me photocopies of examples for the ongoing 2c cover census, final results of which are somewhere in the distant future.

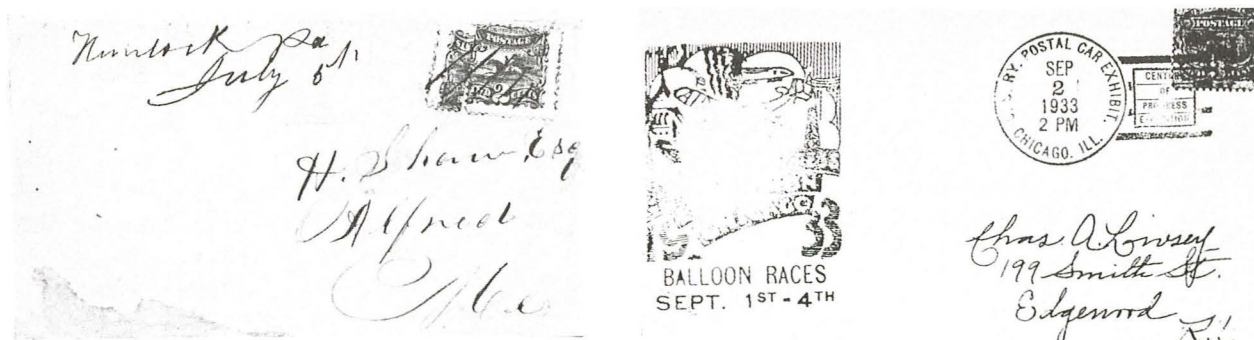
Emery submitted a photocopy of a 2c bisect cover mailed July 5 (possibly 1870) from Newlock (?), Pa., to Alfred, Maine. The franking is by a whole 2c 1869 and a right vertical bisect (Scott's #113c, applied upside down). [See photo below]

The cover here (with PFC "genuine usage" certificate) makes my list as #30 of known, believed genuine 2c bisect covers. Way back in 1944 Scott stopped pricing this variety, and it was valued then at some \$400. Imagine what it is worth today? Perhaps \$1,500, even \$2,500, if the example is pristine and unusual.

Emery also writes that he has more than 100 Shaw covers. If I remember the figures, there are one heck of a lot more to be had, Sid. Good hunting!

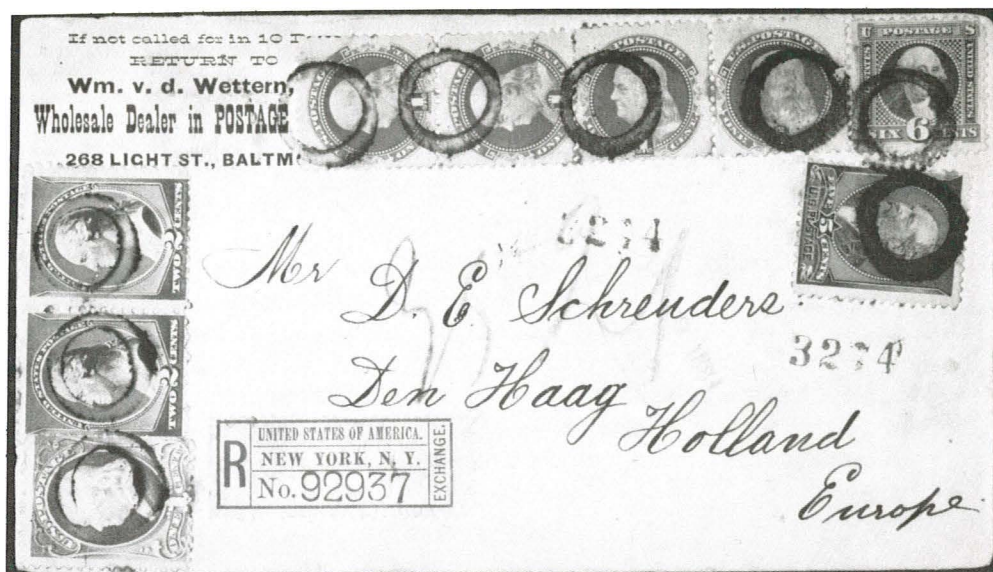
* * *

PRA Member W.M. Wickert, Sr., in a letter to former Times Editor Scott Trepel writes that he has a 3c 1869 cover used on Sept. 2, 1933 [See photo below]. Says Wickert: "While I believe this cover was philatelically prepared (Amen), it still



shows a rather late use of #114. Since I do not have a 1933 Scott Catalogue, I cannot ascertain the catalog value of a mint #114 in 1933. I seriously doubt that it was enough to give a philatelist second thoughts about using it

One of a kind.
Collectors who
recognize the
unusual also
know where to
find it...
Christie's



1c and 6c 1869 Re-issues on cover to Holland, from the Barbara R. Mueller collection, sold for \$17,600 in June 1984.



CHRISTIE'S
ROBSON LOWE

NEW YORK

502 Park Avenue, New York, New York, 10022

for this cover."

More interesting is his observation that the copy shows no evidence of a grill. Wickert asks aid in determining whether or not the stamp could be the rare and elusive 3c re-issue, of which so few used copies on or off cover are known. Are you reading this Stan Piller?

* * *

From the minutes of the Jan. 20, 1984 PRA board meeting: Bob LeBow agreed to handle the #119 cover census. However, Bob has been down in the wilds of Peru for months, but keep sending him stuff, the Peruvians will release him soon.

* * *

Wally Mader, general manager at Robert A. Siegel, reports in late January that the annual Siegel Rarity Sale (April 20) upcoming so far will include some spectacular copies of the 90c 1869. If you are seeking an ultra choice copy of this scarce stamp, be there. As for important 1869 covers and pieces, none as yet, but keep posted.

* * *

Many of us know that the earliest known dates of usage for the 1869 stamps, which are printed in italics in the Scott US Specialized, are in most cases open to dispute. If you have concrete evidence of an earlier posted cover for any value, let your editor know. We will publish the facts and see what happens. Thanks.

Editor's Note: I leave it to readers of this article to check their Hargest, Starnes and the excellent series of articles on 1869 covers to France, which appeared in The Chronicle, written by former 1869 Section Editor, my esteemed friend and knowledgeable student, Michael Laurence, now editor and publisher of Linn's Stamp News.

A start could be made by reading Chronicle 110, pp.116-126, on the post-treaty period: Part One, Direct Covers, in which Laurence discusses part-paid covers, 1/1/'70 on.

What follows here is an elaboration by Elliott Coulter on the infamous "phantom rate covers", a name given the wholly paid, via England, unannounced rate covers to France by the late Prof. George Hargest (See his book, History of Letter Post Communication Between the United States and Europe 1845-1875 (1971 & repr.), p.168 et seq.

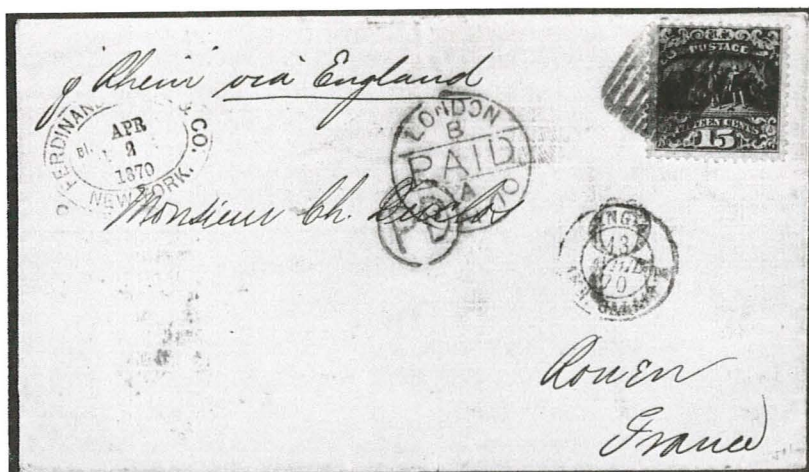


Figure 1. This Type II 15c overpays by 3c the 12c Phantom Rate to Rouen, France, via England. In March, 1870, the NY Foreign Exchange Office began to forward letters to France, if they had at least 12c postage. Sender of this letter presumably used the old convention (U.S.-France) rate of 15c. But note the red credit "8" to Great Britain, typical of phantom rate covers: 4c U.S.; 8c to England.



Figure 2. Four copies each of the 2c and 3c stamps pay the 20c double-weight, inter-treaty rate to France via England. The double direct rate to France was also 20c. The red "16" credit mark, London "PAID" transit and French "PD" show this to be a Phantom (Unannounced rate) cover. (See Hargest, p. 172)



PHANTOM RATE MARKINGS and BEYOND

By ELLIOTT COULTER

As the year 1869 closed, the U.S.-French Convention of March 2, 1857 expired. Since Sept. 5, 1867 John A. Kasson, special representative of the U.S. Post Office, had been busy trying to renegotiate the agreement. One of his chief goals was to find a more satisfactory (and cheaper) straight rate structure between the two countries.

As the Great Britain-United States rate was to be cut in half (12c to 6c, effective Jan. 1, 1870), pressure grew on the French and US negotiators to reduce the rate between their two countries. Kasson wanted to chop the rate of 15c per

per quarter ounce to 10c prepaid, but his efforts failed. When the convention expired at midnight Dec. 31, 1869, there was no agreement to supplant it. There was no prepaid, direct rate for U.S.-French mails.

There were, however, two principal methods to send mail from the United States to France. The first was the direct mail rate of 10c, but this was for mail carried only as far as the French frontier. The recipient in France then had to pay an additional eight decimes (about 15c) for delivery of a single weight letter.

The second way was via Great Britain. The rate was 4c prepaid--2c for inland postage and 2c for sea postage. Again, this covered the charge to the French frontier. It cost less than the 10c direct rate, and presumably was a bit slower. Under the part-paid rate via England, the recipient in France paid another five decimes (about 10c) for internal French carriage.

Under neither method was total prepayment possible. The direct, part-paid route cost about 25c; the indirect by British mail via England, 14c approximately.

In fact, however, there was a third and little used method of sending mail from the United States to France, direct and fully prepaid. This we know today as the "phantom rate."

The legal basis of the "phantom rate" was the treaty between France and Great Britain. This is explained by Prof. Hargest on p.170:

"Thus, on 1 January 1870, there was available by postal convention a fully prepaid rate to France and Algeria of 12c for a single letter of 7 1/2 grams. On letters dispatched from the United States to France, via England, the rate to the British frontier under the United States-British convention was 4c per 15 grams, and this amount was to belong to the dispatching office. Great Britain was to receive a



Under the blob killer a 30c 1869 paying the 26c per ounce "phantom rate" classification. Prepaid as a direct triple 10c direct, this item was processed by the New York Exchange Office as fully prepaid to France, via GB. Note: "18"; Fr. "PD" in oval; London "PAID" 30JY70 dater, all marks of the phantom rate. [See Figure 4, right]



Figure 3. Two 10c stamps pay the 20c unannounced rate for a 1/2-2/3 oz. letter to France via England. U.S. got 8c; G.B., 12c (red credit "12"). Earliest known usage of rate (See Hargest, p. 173).

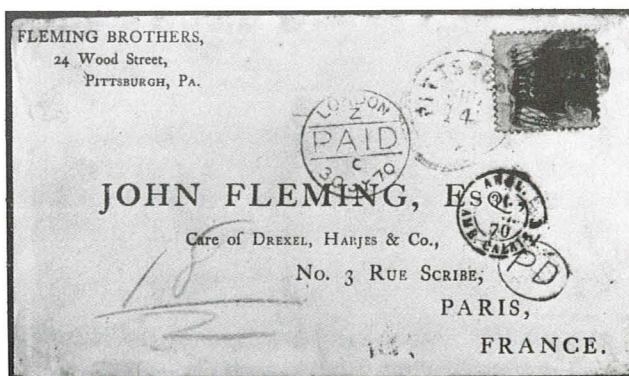




Figure 5. The phantom continues to stalk the NY Exchange Office. This cover with its fine array of raters, killers, postmarks and indicia shows the 10c phantom rate for up to 1/3 oz. (about 10 grams). The Anglo-French Convention of 7.1.70 established the standard at 1/3 oz., reducing the credit to GB to 6c from 8c. The above cover went fully prepaid to Gironde from San Francisco. This rate wasn't announced until 16 months later, on 10.28.71. [Also see Fig. 111, Hargest, p. 174 for similar usage.]

credit of 8c per 7 1/2 grams from the United States to pay the then current international rate between Great Britain and France as prescribed by Article XIII of the Anglo-French convention of 24 September 1856. Although this rate was 4d. per one-fourth ounce in Great Britain, or 40 centimes per 7 1/2 grams in France and Algeria, on prepaid letters, the weight stated by the dispatching office was accepted by the receiving office, except in case of manifest mistake."

On the same page in Hargest is a table of rates by weight. The 12c (for letter not over 7 1/2 grams) rate for transit to France was known by and used by the New York Foreign Exchange Office. However, it was not made known to the general public.

When the U.S.-French Treaty of 1857 expired on Jan. 1, 1870, the USPO could have directed mail via England to France at a fully prepaid rate(charge) of 12c, instead of partial prepayments of 4c via England or 10c direct via French mail, methods costing a total of 14c and 25c, respectively.

At the time of the Sept. 21, 1869 agreement between France and Great Britain (Hargest, p.171), which permitted the fully prepaid charge of 12c through Great Britain, the United States pressured Great Britain to reduce the 8c charge to

France via Great Britain at 10c fully prepaid to France (4c to England, another 6c from there to France).

Well, almost. Why do I temper my enthusiasm? Why do I suggest U.S. pressure on Great Britain? What seemed to be a simple request to reduce the rate from 8c (England to France) ended up being tied to a parliamentary revision of rates, weights and standards. And it was not approved until July 1, 1870.

This six months, Jan. 1, 1870-July 1, 1870, was termed by Prof. George Hargest, the "Phantom Rate" period. This unusual rate was seldom employed—and never announced to the general public.

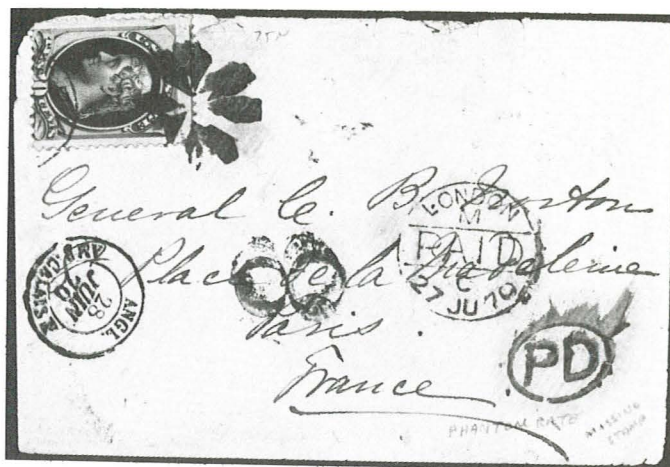


Figure 6. The writer believes this is a 2c underpay of the 12c single phantom rating (8c credit to England, 4c U.S.), with perhaps a 2c stamp missing. This may of course be an early unannounced rating of 10c, 6c Br. credit, 4c U.S., improperly marked "8" credit to G.B. What do you think? [All covers from the writer's Coll.]

OUR COMPREHENSIVE 1869 STOCK

*INCLUDES MANY ESSAYS (including rarer ones),
PROOFS, STAMPS (all values unused and used),
AND COVERS.*

WHAT DO YOU NEED?

SELECTIONS GLADLY SENT ON APPROVAL AGAINST SPECIFIC REQUESTS.

MAY WE HEAR FROM YOU ?

Satisfaction or Immediate Refund — Gladly Sent on Approval with References
Installment Payment Terms if Desired — (No Interest or Carrying Charges)

JACK E. MOLESWORTH, INC.

APS
SPA

88 BEACON ST., BOSTON, MASS. 02108
(617) 523-2522

CSA
USPCS

CHICAGOPEX '83

THE NINE 1869 EXHIBITS

Editor's Note: History is prologue! And history was made in October, 1983 at CHICAGOPEX '83 when nine 1869 PRA exhibitors displayed more than 1,100 pages of 1869 material. Other members included '69 material in their displays, but The Nine devoted all their space to the 1869 issue and re-issue, including incredible proofs and essays, many unique.

Because that event was THE precursor to 1869 display at AMERIPEX '86, I choose to run the following account, as it was written not long after the Chicago event. It would have appeared last year, but for the 18-month gap in the *1869 Times* sequence.

The writer is your editor, for which I beg forgiveness. We may hope that someday each of these exhibitors named below will pen his own story, God willing.

+ +

Imagine if you will more than 1,100 pages of 1869 stamps, covers, proofs and essays all in one place. That was CHICAGOPEX '83, held Oct. 14-16, 1983 at the Bismarck Hotel.

Nine 1869 PRA, Inc. members filled 69 16-page frames (a coincidence?) with such stuff as dreams are made of: three sets of inverted frames, two sets of inverted card proofs, a dozen 30c covers, at least six 24c covers, 150 pages of essays and almost as many of proofs, large unused pieces and covers to almost everywhere.

The exhibits took eight gold medals and a vermeil, the latter being just four frames. In addition, The 1982 Register, whose editor is the present writer, took one of the two gold medals given in the literature competition. The Register had already been awarded a gold in May at Pan Pacific Expo '83, held in Portland, Oregon.

The 1869 exhibits at CHICAGOPEX '83 captured a basketful of special awards. The Paul C. Rohloff Award—Reserve Grand for best United States—was won by Jeff Forster for his nine frames entitled, "The 1869 Pictorial Issue and Re-Issue." Elliott Coulter took the Ben Newman Memorial Award for best U.S. postal history and the Postal History Society Medal for best postal history exhibit overall. Coulter showed eight frames of covers entitled "Worldly Usages."

Michael Laurence made off with the SPA Medal for best original research. Editor-Publisher Laurence displayed eight frames of the 10c stamp and related items. He also contracted the unofficial yellow jaundice medal for the sea of 10c items he showed. In addition, on the far side, the PRA's Corita Cryer won a gold medal for her showing in seven frames of Roman States material. She also received the Richard W. Canman Award, reserve grand award for best foreign exhibit. And, finally, Henry W. Houser, whose exhibit contained many 1869 stamps with Waterbury fancy cancellations, took a gold and the U.S. Cancellation Club Award.

If you couldn't make it to CHICAGOPEX '83, take a walk with me now through the exhibits and we will hit some of the high spots. First up was the gold medal display of Millard Mack, eight frames of 1869 covers, some of which were last displayed almost 20 years ago at SIPEX, the international exhibition held in 1966 in Washington, D.C.

I would have to call it Mack's marvelous material, MMM. There was a Frank Jones stamp dealer cover posted in May, 1884, with three values of the re-issue, 1c, 2c and 12c, and used to Hungary, no less. Another cover bore the 24c re-issue. Another star was the triple combination double rate 22c cover to Valparaiso, Chile, postage paid by a 30c orange F grill (Scott's #100), a 12c 1869 and a 2c red brown no grill National Bank Note stamp (#146).

There were at least two dozen covers to France, franked with a wide variety of stamps, including a double 30c 1869 (handful known), and showing a weird selection of rates like the phantoms, part-paids and rated unpaids.

Some very early usages were there. The man from Ohio showed a 2c 1869 sent on April 5 from New York City, about 10 days after the earliest known (to be the subject of a future Times article). Perhaps the most important early use cover in the 1869 universe was there. This is the one having copies of the 10c and 24c stamps sent April 7, 1869 to Hong Kong via Southampton. The 24c is the earliest known usage of that value and the 10c is the earliest known genuine usage, despite the Scott April 1 listing (unsubstantiated), according to Michael Laurence.

Near the end of the display were three more covers to Hungary and a 22c British mail cover to Batticotta, Ceylon, via Jaffna, with two 10c 1869 stamps and a 2c brown.

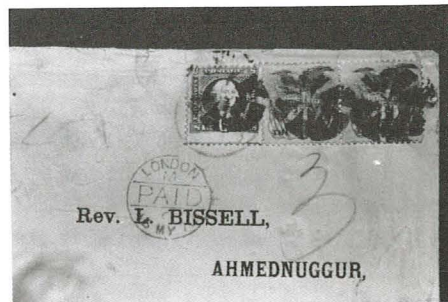
Next came my own humble vermeil exhibit of four frames. I showed used and unused sets of singles and an unused re-issue set, plus a few pages of cancels, including one devoted to the attractive 30c bi-color, one stamp having a green solid star strike. Like Mack I displayed a 2c 1869 bisect used as a 1c.

Other covers included 30c usages to England (five times 6c rate), Guatemala (three times 10c) and Yokohama (with a 12c 1869 paying the 42c rate via Marseilles). What is believed to be the earliest usage of the 12c 1869 (April 1) was in one frame. This cover [See Times #30 cover] also has a 15c F grill Lincoln and two copies of the 2c 1869, overpays by 1c the double 15c rate to Palermo, Sicily—ex-Juhring and signed E. Diena.

The 24c plus 10c cover from Cuba to Peru via New York was there, as was the quadruple color 1869 franking (2c, 3c, 10c and 12c) plus "F" grill Black Jack to Nova Scotia.

Alongside, in stark contrast, was the matchless seven-frame outpouring of essays, shown by that world traveler from the Bay State, Fred W. Lopez. Fred took me through his gold medal exhibit, but I am still a bit confused about those hybrid envelopes and the veined paper essays. Lopez' full-scale display had never been seen before at exhibition.

The crossed-flag 1c Franklin essays were there in 12 colors. An even broader showing of the 5c Washingtons and 10c Lincolns graced the next pages. Large



A pair of the 30c 1869 and a 6c pay the triple 22c rate to India on this Forster cover, one of two known.

die essays of the 10c and 12c issue came next. What these are worth is anybody's guess, but large die proofs of these values list for \$1,750 each.

The 5c, 10c and 30c values on veined paper, seldom seen, were there. The 24c small numerals in various colors were preceded by a splendid showing of the safety paper varieties of the 5c, 10c, 15c and 30c Burgoyne, well illustrated and described in Juhring I, sold June 14, 1978 by Sotheby Parke Bernet Stamp Auction Co., Inc.

A "15" overprint on 15c scarlet on India Type III (Brazer #129E-Ac) was accompanied by large and small numeral varieties of the 15c Type I scarlet on India, very rare, if I heard Fred correctly. The 30c large die with imprint was also impressive.

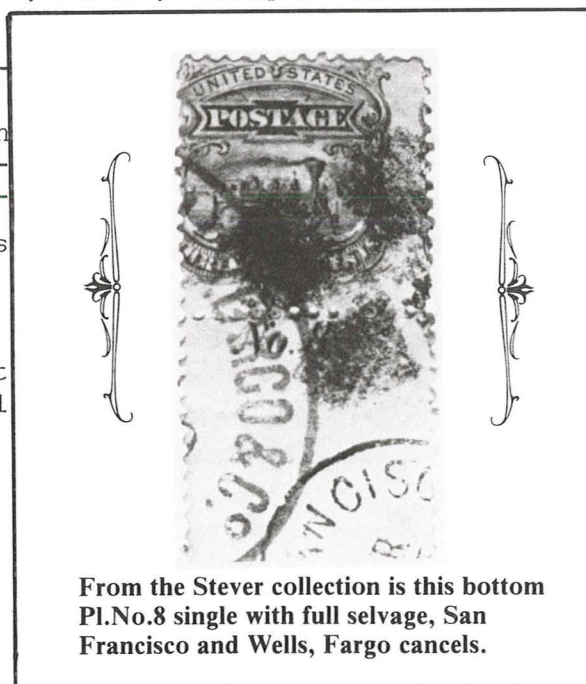
Lopez' envelope essays, many unique, capped the display. A proposed 2c embossed envelope essay with engine-turned framework was there, an item about which I had not even heard. The 5c Washington on 2c Jackson (#U52) large envelope is unique as, I believe, is the 10c Lincoln blue on canary.

Nine frames devoted to the 3c 1869 were shown by Jim Stever of Texas. Winner of previous golds and grands, this showing included essays, proofs, trial colors, singles, shades, multiples and covers.

When I re-franked with 10 cop-marine locomotive, chose not to show an domestic cover bearing 3c used from Texas--

Several pages auxiliary markings tage," "Have Your Street and Number," Found," and "Missent were examples of all some on cover.

Three-cent other stamps made such destinations India, British Col-Shanghai, China. esting covers to to pay the proper cent underpayment, the other a three-cent overpay.



From the Stever collection is this bottom Pl.No.8 single with full selvage, San Francisco and Wells, Fargo cancels.

marked about a cover ies of the 3c ultra-Jim divulged that he even more impressive ing 23 copies of the where else?

showed covers with such as: "Held for Pos-Letter Directed to "Not Called For," "Not and Forwarded." There ten plate numbers,

stamps combined with up various rates to as Switzerland, Spain, umbia, Peru and There were two inter-Denmark, each failing 13c rate, one a three-

The trial color large die proofs (in blue and violet blue) were impressive, as was the Pan Pacific small die proof, of which only a handful are known.

A three-cent on Leeds Patent Envelope was on one page, while another was festooned with various grill varieties. "I still need a triple grill," Stever told me. Anyone have one? Such a lovely stamp; such a lordly exhibit.

It was back to all covers with Elliott Coulter's first time showing of his "Destinations of the World" exhibit in eight frames. Without even trying, I found covers franked with 1869 stamps posted to Cape of Good Hope, Ceylon, Chile, Canada, Colombia, Cuba and Czechoslovakia (Bohemia?)—and those were just the "C's."



Three fine copies of the 1c 1869 Franklin pay the 3c domestic rate on this "Southern" cover of J. Rose.

Other rare destinations included Siam, Prince Edward Island, St. Lucia, the Seychelles, Uruguay and Burma. There were at least three 30c 1869 covers—to Paris, Guatemala (with a 10c 1869) and Palermo, Sicily.

A beautiful 24c re-issue on 3c envelope (Seebeck) with collar around the embossed issue wowed the judges. A normal (#120) 24c plus 10c paid the postage to Hong Kong.

Scattered throughout the exhibit were at least seven mixed franking covers, sent to Syria, Wuertemberg, Ireland, Italy and England, plus one from Cuba to Spain. Probably unnoticed was a cover from Canada to the United States, underpaid by two 3c 1869's, but apparently accepted by postal authorities in Canada and the United States. This cover should have been charged 10c postage for an "unpaid" half ounce letter.

Stretched out between the Stever and Coulter exhibits was the big nine-frame comprehensive showing by Jeff Forster of California. This exhibit has already captured three international gold awards and at least one grand award in national APS shows. It won the Reserve Grand at Chicago.

The Forster frames displayed a set of inverts (used) on one page and a nice group of used and unused multiples on another. Some very choice Waterbury cancellations, including the "Woman in Bonnet" on a 2c 1869 and "Running Chicken" on a 3c off-cover 1869.

After the covers displayed in the Mack, Coulter and Rose exhibits, it is hard to believe that there could be many choice ones left. Rest assured, there are. Forster treated viewers to a double 30c plus 6c paying the triple 22c rate to India (see photo, p.16), plus a 30c and a Type I 15c to France, covering the three times 15c charge.

Some marvelous mixed frankings were there: US and Br. Columbia, US and Italian postage dues, US and Turkish stamps and more. Jeff tells me he is beefing up the showing of multiples and fancies on cover, so be sure to catch this display the next time around (AMERIPEX '86).

J.C.M. Cryer's exhibit was seen in large part at INTERPHIL '76. It won a gold there and at Chicago and lacks only a 24c on cover. Cryer, of Port Lavaca Happening fame, displayed all three inverts and all values of the Pan Pacific small die proofs. Those items alone would cover a pretty nice summer home in the New England countryside.

Of course there was more. Jim Cryer has all 78 of the beautiful Atlanta trial color proofs (plate proofs #123TC-132TC), quite a few large die proofs and rare "SPECIMEN" overprints on the 2c, 10c, 12c, 15c and 30c values. A page of the 90c Lincoln with various cancels featured a red leaf strike and a New York registry hit. Nor should one overlook the beautiful used pair of #132, the 90c re-issue. I believe I spotted a 15c re-issue on cover plus one of the few 30c covers to France. And, as I remember it, a 15c imperforate horizontal copy of the 15c re-issue (#129a).

Perhaps the most dazzlingly colorful display at the show was the scrumptious feast of proofs and essay proofs served up in the ten frames of Falk Finkelburg.

As with the Lopez exhibit I was often lost here. There are 11 different large die trial color proofs of the 30c value known, and each lists for \$2,600 in Scott. There they were in front of me, along with the die essays, typographed essays, plate proofs on India in a plethora of shades, plate proofs on card and...wait! Scott only lists "the" plate proof on card. Actually, there were five printings, in 1879, 1885, 1890, 1893 and 1894. The Finkelburg exhibit had virtually every one of every value.

All 78 Atlanta trial color proofs were there, in case you missed them in the Cryer exhibit. Just take the 90c value. Besides the ten Atlanta color combinations, there was the green and black trial color on card (not to be confused with the similar Atlanta), plate essays in various bi-colors (including blocks and strips), die essays die sunk on card, hybrid large die proof and all five printings of the plate proof on card, mentioned above.

The inverted proofs, four values, included a marginal block of four of the 15c (four of 100 known).

Finally, we come to that beautiful sea of yellow and yellow orange stamps, which was the gold medal showing of Michael Laurence, all in eight frames. Rare proofs and essays of the 10c stamp were there. The title page was decorated with an unused, original gum block of 15 with bottom imprint, the largest recorded multiple of the 10c 1869. (Lester Brookman was under the impression that the largest unused block around was a square block of nine.)

The 10c Lincoln essay was well represented. There were more than a dozen pages devoted just to cancellations on the 10c Eagle and Shield, full pages of numerals, letters and stars. Quite a few New York Steamship strikes were shown, including a horizontal strip of six hit with multiple strikes.

A very nice H.B. Shaw cover was colorfully franked with copies of the 2c, 3c and 10c 1869's and a green 3c Bank Note, all paying the 15c registry and 3c domestic charges.

Various rates to Germany and France, including the "phantoms," were all there, plus a number of exotic destinations: Australia, New Zealand, Brazil and the Seychelles, or was it Mauritius?

The re-issues included one of the three (?) known unused blocks, a used single and an example used on 3c green Plimpton envelope to Wellington, Ohio, March 21, 1883, ex-Juhring. The 10c stamp was tied by New York registry strike. It was a well-written and researched exhibit deserving of the research award.

Despite all the power, none of the 1869 exhibits at CHICAGOPEX '83 won the President's Grand Award for best in show. That went to the late Paul C. Rohloff for his nine page showing "Usages of the U.S. Five Cent Stamps 1875-1898." This display of the 5c Taylors and Grants (definitives) was very impressive.

When will we be able to see such an array of 1869 material again? Perhaps at AMERIPEX '86, the international philatelic exhibition scheduled for May 22-June 1, 1986 at Chicago's O'Hare Exposition Center.



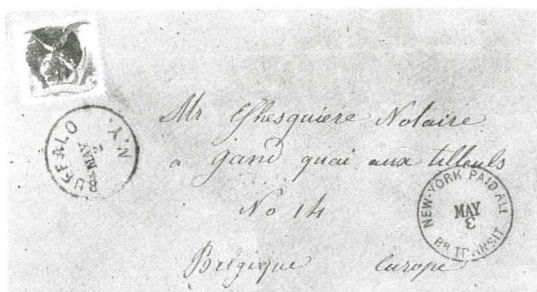


Figure 3 (Upper left) —The only recorded 10c 1869 cover to Belgium. From the collection of the late Lester Downing, the cover was posted May 2, 1870 at Buffalo. The 10c treaty rate to Belgium was effective Mar. 15, 1870-June 30, 1873.



Figure 4 (Upper right)—A pretty (carmine and yellow) and seldom-seen combination of 10c 1869 plus 6c Lincoln bank note definitive, here on a combination rate cover from Shanghai to England, showing the 10c transpacific and 6c transatlantic rates together. Mailed Shanghai, Dec. 12, 1871 [Michael Laurence Photos]

BASELINE CENSUS LISTING OF 12c 1869 COVERS

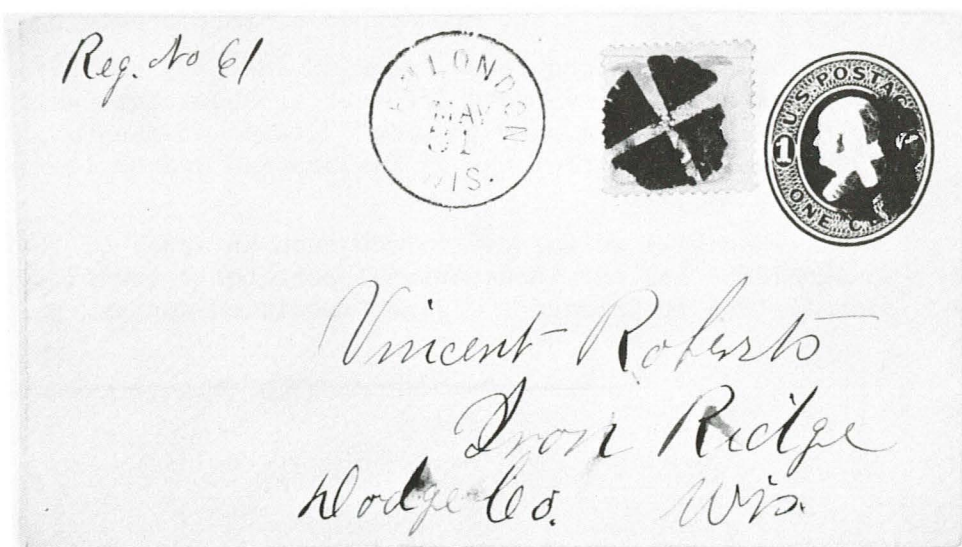
By Richard M. Searing, Ph.D.

The following listing for the 10c 1869 stamp used on cover is the most complete in the census below the 15c value. Michael Laurence has compiled almost 1,000 entries, which I estimate as more than 95 per cent complete. The covers are listed chronologically for easy reference. Any covers not listed should be reported to Michael Laurence [Linn's Stamp News, P.O. Box 29, Sidney, Ohio 45365].

For many covers data are incomplete, so if you have a cover with data missing in the listing, please take time to correct or add and send the information to me [Box 1174, Yorba Linda, CA 92686] as soon as possible. The cutoff date for the census is approaching rapidly.

Editor's Note: The May, 1985 1869 Times will have listings of the 6c 1869 covers as well as the Type II 15c covers. That will leave only the 1c Franklin. Compilations of 2c and 3c covers are continuing as group efforts. I am the census coordinator for 2c covers (#113), while Jim Stever [First City Bank Tower, Box 167, Corpus Christi, Texas 78477] is handling the 3c cover information.

Figure 5. At right a believed unique usage of the 10c '69 on a 1c Reay envelope, paying the 3c domestic letter rate, plus 8c registry fee, which was effective Jan. 1, 1874-June 30, 1875. [Michael Laurence Photo]



1869 10c cover listing

| date | origin/destination | stamps used | descriptive remarks | source |
|-----------|----------------------------------|-----------------------|--|-----------------|
| 04/20/69 | NYC/Dresden, Germany | 116-1: | red NYPD-ALL, 4/20, bxd HAMBURG rec, 5/4:* | M Laurence |
| 04/20/69 | NYC/Wurttemberg, Germany | 116-1: | red NYPD-ALL, 4/20, bxd HAMBURG, 5/4:* | R Searing |
| 04/26/69 | New Orleans, La/France | 114-2: 116-1: | red NYPD "12": blue Fr rec, 5/1:* | Sgl 527/345 |
| 04/29/69 | NYC/British Guiana | 116-1: | St. Thomas, 5/28: rec Demerara, 7/6/69: | British coll. |
| 05/04/69 | NYC/Siegburg, Germany | 116-1: | red NYPD-ALL, 5/4: bxd BREMEN, 5/18:* | Hrmer 4/82- 697 |
| 05/04/69 | New Orleans, La/ Havre, France | 116-1: | blk NYPD "24", 5/11: Fr rec, 5/22: unpd mail:* | M Mack |
| 05/06/69 | NYC/Wurttemberg, Germany | 116-1: | red NYPD-ALL, 5/6: bxd BREMEN, 5/18:* | G Turner |
| 05/1- /69 | NYC/Utica, NY | 112-1: 116-2: | 7x3c rate: fwd to Albany:* | M Laurence |
| 05/13/69 | NYC/Germany | 116-1: | red NYPD-ALL, 5/13, bxd BREMEN, 5/25/69:* | SPBAG 41/1244 |
| 05/18/69 | NYC/Naumburg, Germany | 116-1: | red NYPD-ALL, 5/18, bxd HAMBURG, 5/30/69:* | Sgl 529/ 417 |
| 05/19/69 | NYC/Red Bluff, Ca | 114-1: 116-1: U67a: | NYC reg mail, 5/19: unique '69 use, U67?:* | M Laurence |
| 05/22/69 | N. Orleans, La/ Bordeaux, France | 75-1: 116-1: | red NYPD "6", 5/26: Calais rec, 6/7/69:* | Sgl 590/382 |
| 05/27/69 | NYC/Crossen, Germany | 116-1: | red NYPD-ALL, 5/27, bxd BREMEN, 6/8/69:* | Juhrg 4/462 |
| 06/03/69 | New York, NY/Naumburg, Ger | 116 | red NYPD-ALL, 6/3, bxd BREMEN, 6/17/69:* | M Laurence |
| 06/04/69 | Philadelphia, Pa/ Paris, France | 116-1: | Philda PAID "6", 6/4: 5c undrpy acptd?? :* | Sgl 405/346 |
| 06/10/69 | Lambertville, NJ/ Paris, France | 95?-1: 116-1: | red NYPD "12", 6/12: Fr pkt rec, 6/12/69:* | Hessel 1/726 |
| 06/15/69 | NYC/Naumburg, Germany | 116-1: | red NYPD-ALL, 6/13: bxd HAMBURG, 6/28:* | Sgl 616/ 698 |
| 06/15/69 | NYC/Wurttemberg, Germany | 116-1: | red NYPD-ALL, 6/13, bxd HAMBURG, 6/28/69:* | Rbbns 9/81-936 |
| 06/2- /69 | NYC/Bohemia | 116-1: | red bxd HAMBURG, 6/21(?):* | Sgl 555/ 558 |
| 06/23/69 | Rochester, NY/Germany | 113-1: 116-1: | red NYPD-ALL, 6/24, bxd BREMEN, 7/7/69:* | Hrmer 5/79-169 |
| 06/23/69 | NYC/Brazil | 116-1: | NY "4", 6/23:* | Sgl 583/507 |
| 06/24/69 | NYC/Hesse, Germany | 116-1: | red NYPD-ALL, 6/24, bxd BREMEN, 7/7/69: | D Skove |
| 06/30/69 | S. Francisco, Ca/St. Thomas, Dtl | 116-1: | red NYC "x", 8/23: blk twm conc, 6/30:* | Sgl 188/298 |
| 07/01/69 | NYC/Bremen, Germany | 116-1: | red NYPD-ALL, 7/1: "AUSG", 7/13/69(?):* | Sgl 527/ 342 |
| 07/05/69 | Charleston, SC/ Berlin, Germany | 114-1: 116-1: U59: | red NYPD-ALL Br trs(faded), V-C 20-7-3:* | Hessel 3/612 |
| 07/08/69 | Sacramento, Ca/ Saxony, Germany | 116-1: | blk twm, 7/8: Chicago PD bkstp, 7/14:* | M Laurence |
| 07/08/69 | NYC/Hanover, Germany | 116-1: | red NYPD-ALL, 7/8, bxd BREMEN, 7/20/69:* | Kfmmn 32/667 |
| 07/08/69 | NYC/Germany Y/Ger | 116-1: | red NYPD-ALL, 7/8: bxd BREMEN, 7/20/69:* | Sgl 629/652 |
| 07/14/69 | Mayaguez, Puerto Rico/NYC | 116-1: | red NYC "+", 7/21: St. Thomas rec, 9/14/69:* | Juhrg 4/787 |
| 07/15/69 | Leavenworth, Kan/Paris, Ill | 113-2: 116-2: | reg dom mail, 3x3c + 15c:* | Hessel 3/615 |
| 07/15/69 | Pittsburgh, Pa/ Germany | 116-2 | ??? | PFNY #8332 |
| 07/18/69 | Pittsburgh, Pa/ Bremen, Germany | 116-1: | red NYC "+", 7/20: blue V-C , 8/2(15c rate)?:* | Ivy 8/81- 1368 |
| 07/19/69 | NYC/Wurttemberg, Germany | 116-1: Wurt 49-2, 50: | red NYC, 7/19: bxd HAMBURG, 8/3/69:* | E Coulter |
| 07/20/69 | NYC/Frankfurt, Germany | 116-1: | red NYPD-ALL, 7/20, bxd HAMBURG, 8/3/69: | K Laurence |
| 07/20/69 | NYC/Naumburg, Germany | 116-1: | red NYPD-ALL, 7/20, bxd HAMBURG, 8/3/69: | J Beach |
| 07/20/69 | NYC/Frankfurt on Main, Germany | 116-1: | red NYPD-ALL, 7/20, bxd HAMBURG, 8/3/69:* | Hubbard/379 |
| 07/20/69 | NYC/Leipzig, Germany | 116-1: | red NYPD-ALL, 7/20, bxd HAMBURG, 8/3/69: | Mercury Stamp |
| 07/24/69 | NYC/Germany | 116-1: | red NYPD-ALL, 7/24, bxd HAMBURG, 8/??/69:* | Kfmmn53/409 |
| 07/29/69 | NYC/Vienna, Austria | 116-1: | red NYPD-ALL, 7/29, bxd BREMEN, 8/10/69: | H Stollnitz |
| 08/03/69 | San Francisco, Ca/France | 116-1: | red NYPD "6", 8/12: Calais rec, 8/24/69:* | Sgl 556/1220 |
| 08/05/69 | NYC/Hesse, Germany | 116-1: | red NYPD-ALL, 8/5, bxd BREMEN, 8/16/69:* | Sgl 551/2043 |
| 08/07/69 | Pottsville, Pa/ Hanover, Germany | 116-2 | red NYPD-ALL, 8/10, bxd HAMBURG, 8/22/69:* | Juhrg 4/485 |
| 08/10/ -- | Mequon River, Wis/Germany | 116-1: | canceled, 8/10/??: | Scott 3/79- 207 |
| 08/12/69 | NYC/Frankfurt, Germany | 116-1: | red NYPD-ALL, 8/12, bxd BREMEN, 8/25/69: | J Molesworth |
| 08/14/69 | Burlington, Io/Germany | 116-1: | no information: | Hrmer 11/65-303 |
| 08/18/69 | Baltimore, Md/ Bremen, Germany | 116-1: | Baltimore PAID-ALL: red NYPD-ALL, 8/19: | E Coulter |
| 08/19/69 | NYC/Frankfurt on Main, Germany | 116-2 | red NYPD-ALL, 8/19, bxd BREMEN, 9/1/69:* | Hubbard/394 |
| 08/23/69 | NYC/St. Croix, Dtl | 116-1: | red NYC "+", 8/23:* | Sgl 342/763 |
| 08/28/69 | NYC/Dusseldorf, Germany | 116-1: | red NYPD-ALL, 8/28, bxd BREMEN, 9/11/69: | H Nowak |
| 09/02/69 | ??/Naumburg, Germany | 116-1: | red NYPD-ALL, 9/2, bxd BREMEN, 9/15/69:* | Sgl 591/ 266 |
| 09/03/69 | Canajoharie, NY/NYC | 113-1: 116-1: 119-1: | 9x3c domestic rate:* | M Laurence |
| 09/07/69 | Philadelphia, Pa/ Paris, France | 116-3 | Violet Philda PD "12", 9/7: Calais, 9/19/69:* | Sgl 4/72-662 |
| 09/08/69 | Baltimore, Md/ Liberty, Va | 113-2: 116-2: | 8x3c domestic rate:* | Kfmmn 74/ 210 |
| 09/09/69 | NYC/Bremen, Germany | 116-1: | red NYPD-ALL, 9/9: | GM 11/81- 766 |
| 09/09/69 | Evansville, Ind/Dresden, Germany | 116-1: | red NYPD-ALL, 9/14, bxd HAMBURG, 9/??/69:* | Koerbr11/78-519 |
| 09/11/69 | NYC/Memel, Germany | 116-1: | illegible:* | E Coulter |
| 09/14/69 | St. Thomas, Dtl/New York | 116-1: | St Thomas, 9/14: NYC "+", 9/21: | Peindr 6/57-?? |
| 09/14/69 | St. Thomas, Dtl/New York | 116-1: | rec NYC "+", 9/21: no origin cancel:* | Simmy 5/83-?? |
| 09/14/69 | St. Thomas, Dtl/New York | 116-2: | St. Thomas 9/14/69: rec NYC "+", 9/21:* | Juhrg 4/788 |
| 09/18/69 | NYC/Berlin, Germany | 116-1: | red NYPD-ALL, 9/18(?), bxd BREMEN, 9/28/69: | M Keightley |

1869 10c cover listing

| date | origin/destination | stamps used | descriptive remarks | source |
|----------|----------------------------------|--------------------|---|-----------------|
| 09/18/69 | New Orleans, La/ Creon, France | 76-1:116-1:Fr 20c: | red NYPD "6", 9/22:rec Calais, 10/3/69:* | Sgl 583/514 |
| 09/18/69 | Havana, Cuba/France | 116-1:121-1: | red NYPD "12", 9/25:rec Calais, 10/7/69:* | Ashbrook SS 76 |
| 09/22/69 | NYC/Oldenburger, Germany | 113-1:114-1:116-1: | red NYPD-ALL Br trs, 9/22:V-C, 10/3(15c):* | Sgl 410/621 |
| 09/23/69 | New York/Bavaria, Austria | 116-1: | red NYPD-ALL, 9/23, bxd BREMEN, 10/5/69: | J Cryer |
| 09/25/69 | Louisville, Ky/Germany | 116-1: | red NYPD-ALL, 9/30, bxd BREMEN, 10/12/69:* | M Laurence |
| 09/26/69 | Matamoros, Mex/Bordeaux, France | 113-1:114-1:116-1: | red NYPD "6", 10/6: | M Mack |
| 09/27/69 | St. Louis, Mo/ Germany | 116-1: | red NYPD-ALL, 9/30, bxd BREMEN, 10/12/69:* | M Laurence |
| 09/27/69 | St. Louis, Mo/ Saxony, Germany | 116-1: | red NYPD-ALL, 9/30, bxd BREMEN, 10/12/69: | Novaphil, 9-82 |
| 09/28/-- | NYC/Frankfurt, Germany | 116-1: | red NYPD-ALL, 9/28:* | SPBAG 4/80-314 |
| 09/30/69 | Jersey City, NJ/ Bremen, Germany | 116-1: | red NYPD-ALL, 10/5, bxd HAMBURG, 10/18/69: | F Lopez |
| 10/--/69 | St. Thomas, DMI/ NYC | 116-1:DMI#2: | LaGuayra merchant cachet: NYC "+", 10/20:* | Stolow 4/71-?? |
| 10/06/69 | NYC/Wethersfield, Ct | 113-1:115-1:116-1: | reg dom mail: | M Mack |
| 10/07/69 | NYC/Trieste, Austria | 116-1: | red NYPD-ALL, 10/7, bxd BREMEN, 10/20/69: | Word 6/44-439 |
| 10/12/69 | Newark, NJ/ Beirut, Turkey | 116-2 | Fr 2 via NGU: V-C, 10/24:* | Juhrg 4/486 |
| 10/14/69 | St. Thomas, DMI/ Maine | 116-1: | St. Thomas, 10/14/69: NYC "+", 10/20: | Pelndr 12/50-?? |
| 10/14/69 | St. Thomas, DMI/ New Orleans, LA | 116-1: | St. Thomas, 10/14/69: NYC "+", 10/20: | Pelndr 9/49-?? |
| 10/15/69 | San Francisco, Ca/France | 113-1:114-1:116-1: | blk twm, 10/15:rec Cherbourg:* | M Laurence |
| 10/18/69 | Boston, Ma/ Gotha, Germany | 116-1: | red Boston PD, 10/18, bxd HAMBURG, 10/31/69:* | M Laurence |
| 10/19/69 | NYC/Hanover, Germany | 116-2 | NYPAD OCT 19, HAMBOX 31-10-69 | SPBAG 10/79-314 |
| 10/19/69 | NYC/Naumburg, Germany | 116-1: | NYPAD OCT 19 | Sgl 452/ 542 |
| 10/19/69 | Davenport, Ia/ Holstein, Germany | 116-1: | HAMBOX 7-11-69 | M Laurence |
| 10/22/69 | Boston, Ma/ Argentina | 987-1:116-1: | NY CR 15 | Sgl 5/58-757 |
| 10/23/69 | NYC/St. Croix, DMI | 116-1: | NY "+" OCT 23, St. Thomas 31/10 1869 | Juhrg 1/780 |
| 10/25/69 | Council Bluffs, Ia/ Lund, Sweden | 112-1:114-1:116-1: | HAMBOX 16-11-69, "4 CENTS" credit to Ger | J Stever |
| 10/26/69 | Newark, NJ/Beirut, Turkey | 116-2 | NYPABTR OCT 27, 5, fr2, V-C, via NGU | M Laurence |
| 10/31/69 | Baltimore, Md/ Germany | 116-1: | NYPAD NOV ?, HAMBOX 16-11-69, "PAID ALL" | Sgl 5/72-1077 |
| 11/02/69 | NYC/Trieste, Austria | 113-1:114-1:116-1: | NYPABTR NOV 3, V-C 14[?]-?-III | Sgl 516/404 |
| 11/02/69 | Newark, NJ/Beirut, Syria | 116-3 | crayon cr 21, CALAIS 14 NOV 69, PD | Juhrg 1/788 |
| 11/06/69 | New Orleans, La/Bordeaux, France | 113-1:114-1:116-1: | NY PAID 12 NOV 10, CALAIS 21 NOV 69 | M Laurence |
| 11/07/69 | New Orleans, La/Bordeaux, France | 116-1: | NY PAID 6 NOV 11, 10c accepted as 15c | Ball 9/72-?? |
| 11/1-69 | Evanston, Ill/Greece | 114-1:116-2: | NYPABTR NOV 16, f3, 8, PD, via NGU | F Lopez |
| 11/10/69 | Ft. Madison, Ia/ Germany | 116-1: | HAMBOX 29-11-69 | Hessel 3/591 |
| 11/10/69 | London, O/Bremen, Germany | 116-1: | NYPAD NOV 16, AUSG 30/11 | Hanson find |
| 11/11/69 | NYC/Germany | 116-1: | NYPAD NOV 11, BREMBOX 24-11-69 | LR 9/81-935 |
| 11/11/69 | NYC/Germany | 116-1: | NYPAD NOV 11, BREMBOX 24-11-69 | Sgl 629/654 |
| 11/14/69 | St. Thomas, DMI/New York | 116-1: | St. Thomas 14/11 69, NYSTEAM NOV 20 | Juhrg 4/789 |
| 11/14/69 | St. Thomas, DMI/New York | 116-1: | LaGuayra m.c., St. Thos., NYSTEAM NOV 20 | Juhrg 4/790 |
| 11/14/69 | Arecibo, PR/New York | 116-1: | St. Thomas 14/11 69, NYSTEAM NOV 21 | Sgl 5/58-744 |
| 11/14/69 | St. Thomas, DMI/Washington, Pa | 116-1: | St. Thomas 14/11 69, NYSTEAM | Danam 10/89-?? |
| 11/16/69 | San Francisco, Ca/Germany | 114-1:116-2: | NY reg NOV 30, VC 11-12-III (15c + 8c reg) | REGISTER 82:14 |
| 11/17/69 | Baltimore, Md/Germany | 116-1: | BREMBOX 1-12-69, "PAID ALL" | Zimrn 3/75- 349 |
| 11/19/69 | Dubuque, Ia/ Germany | 116-1: | HAMBOX 6-12-69 | Simmy 6/76- 120 |
| 11/22/69 | Chicago, Ill/Marburg, Germany | 116-1: | BREMBOX ?-12-69, backstamped 9-12-69 | H Karlen |
| 11/23/69 | NYC/Naumburg, Germany | 116-1: | NYPAD NOV 23, HAMBOX X-X-69, receiver 3-12 | Sgl 601/ 238 |
| 11/23/69 | NYC/Nice, France | 113-1:114-1:116-1: | NY DEBIT 24 NOV 23, CHERBOURG 5 DEC 69 | G McHenry |
| 11/24/69 | Philadelphia, Pa/ Germany | 116-1: | PHILA PAD NOV 24, BREMBOX 8-12-69 | M Laurence |
| 11/25/69 | NYC/Oldenburger, Germany | 116-1: | NYPAD NOV 25, BREMBOX 8-12-69 | Fraj 1/84- 570 |
| 11/26/69 | Washington, DC/Germany | 116-1: | NYPAD NOV 30, HAMBOX 12-12-69 | AmPhBk 3/80-271 |
| 11/27/69 | Morristown, NJ/Germany | 116-1: | NYPAD NOV 30, HAMBOX 12-12-69 | S Emery |
| 11/27/69 | Zumbrota, Min/Stadtilm, Germany | 116-1: | HAMBOX 20-12-69 | Juhrg 4/446 |
| 11/30/69 | Brooklyn, NY/Germany | 116-1: | NYPAD NOV 30, HAMBOX ?-?-69 | W Orton III |
| 11/30/69 | NYC/Wurttemberg, Germany | 116-2: | NYPAD NOV 30, HAMBOX 12-12-69 | Sgl 452/ 551 |
| 12/--/69 | Argentina/New York | 116-1: | St. Thomas 13/12 69, NYSTEAM DEC 20 | Knapp 2/1719 |
| 12/02/69 | St. Paul, Min/Freiberg, Germany | 116-1: | NYPAD DEC 2, BREMBOX 14-12-69 | Juhrg 4/461 |
| 12/03/69 | Adrian, Min/Kitzbuhel, Austria | 116-1: | NYPAD DEC 7, HAMBOX 19-12-69 | Himer 1367/273 |
| 12/04/69 | NYC/Trieste, Austria | 114-1:116-2: | NYREG DEC 4, V-C 14-12-5 | Kfminn 32/669 |
| 12/04/69 | Washington, DC/Paris, France | 114-2:116-1: | Supreme Court cc, forwarded to Germany | Sgl 6/73-277 |
| 12/06/69 | Boston, Ma/ Dresden, Germany | 116-1: | BOSTON PAD DEC 6, HAMBOX 22-12-69 | M Laurence |
| 12/06/69 | London, O/Bremen, Germany | 116-1: | NYPAD DEC 7, AUSG 12-22 | Hanson find |

1869 10c cover listing

| date | origin/destination | stamps used | descriptive remarks | source |
|----------|----------------------------------|--------------------|--|------------------|
| 12/06/69 | Boston, Ma/ Paris, France | 113-1:114-1:116-1: | BOST PAID 6, CALAIS 10 DEC | Sgl 375/556 |
| 12/07/69 | Chicago, Ill/Detmold, Germany | 116-2: | BREMBOX 12-21-69 | Juhrg 4/481 |
| 12/08/69 | Webster, Ma/ Bremen, Germany | 116-1: | NYPAD DEC 9 | Sgl 452/540 |
| 12/09/69 | NYC/Dresden, Germany | 116-1: | BBBREMBOX 21-12-69 (?) | Kfmnn 9/79-410 |
| 12/09/69 | Arecibo, PR/ Philadelphia, Pa | 116-1: | PR merchant cachet, NYSTEAM DEC 20 | Doane 6/43-?? |
| 12/10/69 | Washgtn DC/Constantinople, tky | 116-2: | NYPABTR DEC 11, 5, fr2, V-C, via NGU | M Mack |
| 12/11/69 | Chicago, Ill/Marburg, Germany | 116-1: | HAMBOX 2?-12-69 | Knapp 2/1716 |
| 12/13/69 | Louisville, Ky/ Saxony, Germany | 116-1: | NYPAD DEC 16, BREMBOX 30-12-69 | Sgl 1/72- 1568 |
| 12/13/69 | Milwaukee, Wis/Bremen, Germany | 116-1: | no exchange office markings | Herst 149/418 |
| 12/13/69 | Richmond, Ind/Paris, France | 116-1:Fr #35: | NY PAID 6 DEC 16, CALAIS, forwarded to lt | Sgl 516/402 |
| 12/13/69 | St. Thomas, DMI/NYC | 116-1: | St. Thomas 13/12 69, NYSTEAM DEC 20 | M Laurence |
| 12/13/69 | St. Thomas, DMI/NYC | 116-3: | St. Thomas 13/12 69, NYSTEAM DEC 20 | Juhrg 1/790 |
| 12/13/69 | Cape Haitien, Haiti/New York | 116-1: | St. Thomas 13-12 69 | Sgl 590/389 |
| 12/15/69 | NYC/Germany | 113-2:114-2:116-2: | NYPABTR DEC 15, V-C 26-12-XX (2x15c rate) | Juhrg 1/796 |
| 12/18/69 | NYC/Toulouse, France | 113-1:114-1:116-1: | NY PAID DEC 18, CALAIS | Sgl 590/388 |
| 12/20/69 | Chicago, Ill/Wurttemberg, Gny | 116-1:3c env: | BREMBOX 10-1-70 | C Hennen |
| 12/20/69 | Manistee, Mi/ Hungary | 116-1: | HAMBOX 9-1-70 | M Mack |
| 12/21/69 | Brownsville, Tex/Germany | 116-1: | NYPAD JAN 15 | Smithsn 1/84-12 |
| 12/27/69 | Boston, Ma/ Dresden, Germany | 116-1: | BOSTON PAD DEC 27, HAMBOX 9-1-70 | Frajola 1/933 |
| / /7- | Industry, Tex/Germany | 116-1 | NYPABTR | Paige 4/60- 560 |
| / /70 | Boston-Portland RPO/New York | 116-1: | only RR cover with 116(?) | Sgl 4/72-1074 |
| / /70 | NYC/Denmark | 114-1:116-1: | "per Hammonia", 2 1/2, no other marks | W Lea |
| / /70 | NYC/Rome, Italy | 112-1:114-1:116-1: | BREMBOX 2-?-70, 1 1/2 Sgr., via NGU | Knapp 2/1733 |
| / /70 | Boston, Ma/ Dresden, Germany | 116-1: | none, Burrage corr. | H Gobie |
| / /70 | Philadelphia, Pa/ Paris, France | 116-1: | CHERBOURG XX, 16 due | SPBAG 11/82-224 |
| 01/--/70 | Brownsville, Tex/Bremen, Germany | 116-1: | NYPAD JAN 15 | M Laurence |
| 01/--/70 | Baltimore, Md/ Marburg, Germany | 116-1: | NYPAD JAN 22, BREMBOX 3-2-70, "PAID ALL" | Frajola 9/82-650 |
| 01/01/70 | Buffalo, NY/Paris, France | 116-3: | NY"x" JAN 4, Cherbourg 15 JANV 70, 16 due | Juhrg 1/789 |
| 01/03/70 | Boston, Ma/ Hamburg, Germany | 116-1: | BOSTON PAD JAN 3, HAMBOX 16-1-70 | Hrmer 4/82-2133 |
| 01/04/70 | Fairbault, Mn/ Germany | 116-1: | HAMBOX 23-1-70 | SPBAG 10/79-216 |
| 01/04/70 | Troy, O/Colburg, Germany | 116-1: | NYPAD JAN 8, BREMBOX 21-1-70 | M Laurence |
| 01/04/70 | Newark, NJ/Beirut, Turkey | 116-2: | V-C 17-1, 5, fr2, via NGU | Sgl 590/392 |
| 01/04/70 | NYC/Paris, France | 116-1: Fr#25: | NY"x" JAN 4, Cherbourg 15 JAN 70, 8 due | Sgl 452/554 |
| 01/05/70 | Council Bluffs, Io/Lund, Sweden | 113-2:116-1: | HAMBOX 23[?]-1-70, "4 CENTS" | Downing/1320 |
| 01/06/70 | Mayaguez, PR/ Philadelphia, Pa | 116-1: | NY"x" JAN 21, no St. Thomas markings | Sgl 6/73-264 |
| 01/07/70 | Puerto Cabello, Ven/California | 116-1: | NYSTEAM [JAN] 20, St. Thomas | Sgl 369/808 |
| 01/08/70 | Boston, Ma/ Schoharie, NY | 116-2:120-1: | 11 times 4c book rate | |
| 01/08/70 | NYC/Leipzig, Germany | 116-1: | NYPAD JAN 8, BREMBOX 21-1-70 | Sgl 616/696 |
| 01/08/70 | NYC/Frankfurt, Germany | 116-1: | NYPAD JAN 8, BREMBOX 21-1-70 | Clisghse 11/80-? |
| 01/08/70 | London, O/Bremen, Germany | 116-1: | NYPAD JAN 11, AUG 24/1 | Hansen find |
| 01/08/70 | NYC/Pest, Hungary | 116-1: | NYPAD JAN 8, BREMBOX 21-1-70 | H Stollnitz |
| 01/08/70 | NYC/Paris, France | 116-1: | NYPABTR JAN 8, GB/40, 5 due, | Sgl 333/893 |
| 01/1-/70 | San Francisco, Ca/ France | 116-1: | Cherbourg Feb 70, SF merchant cc, 8 due | Paige 3/57- 264 |
| 01/10/70 | Boston, Ma/ Dresden, Germany | 116-1: | BPAD JAN 10, HAMBOX 23-1-70, Burrage corr. | J Wilson |
| 01/10/70 | Boston, Ma/ Dresden, Germany | 116-1: | BPAD JAN 10, HAMBOX 23-1-70, Burrage corr. | Hrmer 4/73-445 |
| 01/11/70 | NYC/Lyons, France | 116-1: | NY"x" JAN 11, Cherbourg JAN 22, due 8 | Wlfrrs 115/2758 |
| 01/11/70 | NYC/Bordeaux, France | 116-1: | NY"x" JAN 11, Cherbourg 22 JANV 70 | Sgl 6/73-257 |
| 01/11/70 | NYC/Paris, France | 116-1: | NY"x" JAN 11, Cherbourg 22 JANV 70, 8 due | Kfmnn 21/ 1223 |
| 01/11/70 | NYC/Bordeaux, France | 116-1: | NY"x" JAN 11, Cherbourg 22 JANV 70, 8 due | Juhrg 4/473 |
| 01/12/70 | New Orleans, La/Gironde, France | 116-1: | NY"x" JAN 19, GB/40, CALAIS 31 JANV 70, 10 | Sgl 452/543 |
| 01/14/70 | Boston, Ma/ Germany | 116-1: | BPAD JAN 14, BREMBOX 28-1-70 | Herst 4/72- 412 |
| 01/15/70 | NYC/Hesse, Germany | 116-1: | NYPAD JAN 15, BREMBOX 28-1-70 | Wiescz 1/79- 73 |
| 01/15/70 | ??/Darmstadt, Germany | 116-1: | NYPAD ?, BREMBOX 28-1-70 | M Laurence |
| 01/17/70 | Elizabeth, NJ/Paris, France | 116-1: | NY"x" JAN 19, GB/40, CALAIS 31 JANV 70, 5 | B Arch |
| 01/19/70 | London, O/Bremen, Germany | 116-1: | NYPAD JAN 22, AUG 3/2 | Hansen find |
| 01/20/70 | Davenport, Io/Germany | 116-1: | BREMBOX 3-2-70 | W Bilden |
| 01/20/70 | ??/France | 116-3: | NY STEAMSHIP JAN 20, Fr oct 22 JANV 70 | Knapp 2/1730 |
| 01/21/70 | Boston, Ma/ Gotha, Germany | 116-1: | BPAD JAN 21, BREMBOX 3-2-70 | Juhrg 4/463 |
| 01/22/70 | NYC/Linz, Germany | 116-1: | NYPAD JAN 22, BREMBOX 3-2-70 | Wiescz 1/79-?? |

1869 10c cover listing

| date | origin/destination | stamps used | descriptive remarks | source |
|----------|----------------------------------|-----------------------|--|-----------------|
| 01/22/70 | New Jersey/France | 116-1: | NY"x" JAN 22, Fr octagon, 16, brewery cc | HS 5/77-822 |
| 01/23/70 | NYC/Munich, Germany | 116-1: | NYPAD JAN 23, BREMBOX ?-?-70 | M Waud |
| 01/24/70 | Boston, MA/ Dresden, Germany | 116-1: | BPAD JAN 24 & 25, HAMBOX 7-2-70 | A Atkins |
| 01/25/70 | Lambertville, NJ/Paris, France | 116-1: | NY"x" JAN 26, CALAIS 5 FEVR 70, GB/40, 5 | B Arch |
| 01/27/70 | Memphis, TN/ Germany | 114-2:116-1: | V-C unclear, AUSG 18-2 (15c rate) | J Molesworth |
| 01/28/70 | Washington, DC/Paris, France | 116-1: | NY"x" JAN 29, CALAIS 9 FEVR 70, GB/40, 10 | Sgl 458/1310 |
| 01/29/70 | NYC/Gottingen, Germany | 116-1: | NYPAD JAN 29, BREMBOX 10-2-70 | M Waud |
| 01/29/70 | NYC/Havre, France | 116-1: | NY"x" JAN 29, CALAIS 9 FEVR 70, GB/40, 5 | M Schuh |
| 01/31/70 | London, O/Bremen, Germany | 116-1: | NYPAD FEB 2, AUSG 18/2 | Hansen find |
| 01/31/70 | Montrose, Pa/ Heidelberg, Gmy | 116-2: | NYPAD FEB 1, HAMBOX 19-2-70 | Hrmer 4/72- 661 |
| 01/31/70 | Chicago, Ill/Lyons, France | 116-1: | NY"x" FEB 2, CALAIS 18 FEVR 70, GB/40, 5 | C Hennen |
| 02/--/70 | Boston, MA/ Saxony, Germany | 116-1: | HAMBOX 19-2-70 | Sgl 587/ 431 |
| 02/--/70 | Boston, MA/ Dresden, Germany | 114-1:116-1: | Boston circular INSUFFICIENTLY PAID | Downing/1321 |
| 02/--/70 | ?? City, Ca/Germany | 116-1: | [BRE]MBOX 2---70 | Wiffers 107/122 |
| 02/01/70 | ??, Md/Poland | 116-1: | NYPAD FEB 1, HAMBOX | Hrmer 5/61-?? |
| 02/04/70 | Boston, MA/ Dresden, Germany | 116-1: | BPAD FEB 4, BREMBOX 20-2-70 | M Laurence |
| 02/04/70 | NYC/Havre, France | 116-1: | NY"x" FEB 5, Fr oct 5 FEVR 70, 8 due | C Hart |
| 02/04/70 | Elizabeth, NJ/Paris, France | 116-1: | NY"x" FEB 5, Fr oct #1 5 FEVR 70, 8 due | Hrmer 2627/2132 |
| 02/05/70 | NYC/Bordeaux, France | 116-1:Fr 20c&40c stp: | NY"x" FEB 5, Fr oct 5 FEVR 70, | Hrmer 2627/2129 |
| 02/05/70 | NYC/Paris, France | 116-1: | NY"x" FEB 5, Fr oct 5 FEVR 70, 8 due | PFFNY record |
| 02/07/70 | Boston, MA/ Dresden, Germany | 116-1: | BPAD FEB 7, HAMBOX 23-2-70 | Sgl 556/1218A |
| 02/07/70 | Boston, MA/ Dresden, Germany | 116-1: | BPAD FEB 7, HAMBOX 23-2-70, Burrage corr. | M Laurence |
| 02/07/70 | Washington, DC/Corsica | 116-1: | NY FEB 9, CHERBOURG 21 FEV 70, 16 due | Juhrig 4/479 |
| 02/08/70 | New Orleans, La/Mulhouse, France | 116-1: | NY"x" FEB 15, Cherbourg 27 FEVR 70, 8 due | M Laurence |
| 02/08/70 | NYC/Bordeaux, France | 116-1: | NY"x" FEB 9, CALAIS 22 FEVR 70, GB/40, 10 | M Mack |
| 02/1-/70 | Pittsburgh, Pa/ Bremen, Germany | 116-1: | NYPAD FEB 1-, Stadtpost 4-3-70 | M Laurence |
| 02/11/70 | Boston, MA/ Dresden, Germany | 116-1: | BPAID FEB 11, "PAID ONLY TO ENGLAND", due | Downing/1313 |
| 02/11/70 | New Orleans, La/ Paris, France | 116-1: | NY"x" FEB 15, Cherbourg 27 FEVR 70, 8 due | C Burke-Easton |
| 02/11/70 | Wilkes-Barre, Pa/ Paris, France | 116-1: | NY"x" FEB 12, CALAIS 24 FEVR 70, GB/40, 5 | HRH 3-6-71, 393 |
| 02/12/70 | Montreal, Can/Germany | 116-1: | NYPAD FEB 12, Montreal merchant cachet | 529 RAS 412 |
| 02/14/70 | Boston, MA/ Dresden, Germany | 116-1: | BPAD FEB 14, HAMBOX 1-3-70, Burrage corr. | 583 RAS 509 |
| 02/14/70 | Hartford, Ct/Copenhagen, Denmark | 115-1:116-1: | NYPAD FEB 19, BREMBOX XX-3-70 | 475 RAS 582 |
| 02/14/70 | Boston, MA/ Paris, France | 116-1: | NY FEB 15, Cherbourg 27 Feb [?], 8 due | Ray Foley |
| 02/14/70 | Merced Falls, Ca/Vaucluse, Fr | 115-1:116-1: | NY"x" FEB 23, CALAIS 9 MARS 70, GB/40, 5 | 526 RAS 196 |
| 02/15/70 | Newark, NJ/Beirut, Turkey | 116-2: | NYPABTR FEB [16], 5, V-C 2-3, via NGU | Millard Mack |
| 02/15/70 | Quincy, MA/ Paris, France | 116-1:Fr#32: | BOS FEB 15, CALAIS 3 MARS 70, GB/40, 5 | 4 Juhring 489 |
| 02/15/70 | San Francisco, Ca/France | 116-1: | NY"x" FEB 23, CALAIS 9 MAR 70, GB/40, 5 | 3 Hessel 588 |
| 02/16/70 | NYC/Rome, Italy | 114-1:115-1:116-1: | NYPABTR FEB 16[?], V-C 2-3, via NGU | 526 RAS 204 |
| 02/18/70 | Philadelphia, Pa/ Paris, France | 116-2: | PHILAD'A FEB 18, Fr oct 19 FEVR 70, 16 due | SPB 11-22-82 |
| 02/19/70 | NYC/Germany | 116-1: | NYPAD FEB 19, BREMBOX 3-3-70 | Cl'inghse 3-83 |
| 02/2-/70 | Pittsburgh, Pa/ Bremen, Germany | 116-1: | NYPAD FEB 28, Fleming correspondence | ML records |
| 02/2-/70 | Philadelphia, Pa/ Paris, France | 116-1: | PHILAD'A FEB 2?, CALAIS ??, GB/40, 10 | SPB 11-82, 226 |
| 02/22/70 | NYC/Paris, France | 116-1: | NY FEB 2X, Cherbourg 8 MARS 70, 8 due | HRH 6-4-80, 186 |
| 02/22/70 | San Francisco, Ca/ Bordeaux, Fr | 116-1: | NY"x" MAR 3, Salles 1796 19 MARS 70 | Gibson 443 |
| 02/22/70 | Chicago, Ill/Lyons, France | 116-1: | NY"x" MAR 3, Salles 1796 19 MARS 70 | ML |
| 02/23/70 | Cincinnati, OH/Saxony, Ger | 116-1: | NYPAD FEB 26, BREMBOX 11-3-70 | N. Robinson |
| 02/23/70 | Pittsburgh, PA/Bremen, Ger | 116-2: | NY + FEB 26, AUSG 11/3, Fleming corr. | Mozian 11-71,83 |
| 02/23/70 | New York, NY/Stuttgart, Ger | 113-1:114-1:116-1: | NYPABTR [FEB 23], V-C 10-3-111, 15c rate | RKauf 3-80, 259 |
| 02/24/70 | Greencastle, PA/Berlin, Ger | 116-1: | NYPAD FEB 26, BREMBOX 11-3-70 | 526 RAS 199 |
| 02/24/70 | New Orleans, LA/Paris, Fr | 116-1: | NY"x" MAR 3, Salles 1796 19 MARS 70 | 374 RAS 1085 |
| 02/25/70 | Boston, MA/Gotha, Ger | 116-1: | BREMBOX 11-3-70 | 17 Hyers 239 |
| 02/25/70 | New Orleans, LA/Bremen, Ger | 116-1: | NYPAD MAR 5, fwd to Paris, 19 decimes due | 4 Juhring 477 |
| 02/25/70 | Jersey City, NJ/Paris, Fr | 116-2: | NYPABTR FEB 26, LONPD 9-9-70, CR 16, PD | ML |
| 02/26/70 | New York, NY/Rome, Italy | 112-1:114-1:116-1: | BREMBOX 10-3-70, Wfr 1 1/2 Sgr, via NGU | 2 Knapp 1732 |
| 02/28/70 | Hartford, CT/Copenhagen, Den | 116-1: | NY+ MAR 2, INSUFFICIENTLY PAID | 475 RAS 569 |
| 03/01/70 | Chicago, IL/Ger | 116-2 | CHIPAD (rev) MAR 3, BREMBOX 19-3-70 | 2612 HRH 164 |
| 03/01/70 | London, OH/Bremen, Ger | 116-2 | NYPAD MAR 5, AUSG 19/3 | Hansen find |
| 03/05/70 | New York, NY/Weimar, Ger | 116-2 | NYPAD MAR 5, BREMBOX 19-3-70 | 452 RAS 553 |

1869 10c cover listing

| date | origin/destination | stamps used | descriptive remarks | source |
|----------|-------------------------------|---------------|---|-----------------|
| 03/05/70 | New York, NY/Hesse, Ger | 116 | NYPAD MAR 5, BREMBOX 19-3-70 | Jack Molesworth |
| 03/05/70 | New York, NY/Savoy, Fr | 116 | NY "+" MAR 5, Fr oct 5 MARS 70, 8 due | 55 Wolffers 60 |
| 03/05/70 | New York, NY/Paris, Fr | 116 | NY "+" MAR 5, Fr oct 5 MARS 70, 8 due | Gibson 442 |
| 03/05/70 | Lambertville, NJ/Paris, Fr | 116 | assumed Fr oct 5 MARS 70 | 433 Apfel 1068 |
| 03/05/70 | New Orleans, LA/Bordeaux, LA | 116 | NY "+" MAR 15, CHERBOURG 26 MARS 70, 8 | 2627 HRH 2134 |
| 03/06/70 | Philadelphia, PA/Berlin, Ger | 116, 114, 119 | Philly registry, HAMBOX 20-3-70 | Hubbard 395 |
| 03/06/70 | Chicago, IL/Hamburg, Ger | 116 | CPAD (rev) MAR 6, HAMBOX illegible | 32 RKauf 667 |
| 03/07/70 | Boston, MA/Dresden, Ger | 116-2 | BPAD MAR 7, HAMBOX 20-3-70 | 583 RAS 512 |
| 03/08/70 | Williamsburgh, NY/Ger | 116 | NYPAD MAR 8, HAMBOX 20-3-70 | Louis Reich |
| 03/08/70 | Mayville, WI/Ger | 116 | BREMBOX 25-3-70 | HRH 2-79 625 |
| 03/08/70 | New York, NY/Paris, Fr | 116 | NY MAR 8, Cherb 20 MARS 70, 8, TOO LATE | 590 RAS 381 |
| 03/08/70 | Elizabeth, NJ/Paris, Fr | 116, 73 | NYPABRTR, CR 8, LONPD, PD, CALAIS MAR 70 | Joe Rorke |
| 03/09/70 | London, OH/Bremen, Ger | 116 | NYPAD MAR 12, AUSG 25/3 | Hanson find |
| 03/11/70 | Philadelphia, PA/M-S, Ger | 116-3 | Registered, BREMBOX 25-3-70 | RAS 4-5-80, 130 |
| 03/11/70 | Philadelphia, PA/Paris, Fr | 116 | CALAIS 24 MARS 70, GB/40, 5 due | 575 RAS 701 |
| 03/11/70 | Philadelphia, PA/Paris, Fr | 116 | CALAIS MARS ? 70, GB/40, 5 due | 11-82 SPB 217 |
| 03/12/70 | New York, NY/Stuttgart | 116 | Hotel CC, NYPAD MAR 12, BREMBOX 25-3-70 | Mel Schuh |
| 03/12/70 | Hartford, CT/Copenhagen, Den | 116 | NYDIRECT MAR 12, INSUFFICIENTLY PAID | 475 RAS 568 |
| 03/12/70 | New Orleans, LA/Gironde, Fr | 116 | NY "+" MAR 12, 8 due | Feldman 11-82 |
| 03/12/70 | New York, NY/Bordeaux, Fr | 116 | NY "+" MAR 12, CALAIS 24 MARS 70, GB/40, 5 | 6 Caspary 210 |
| 03/13/70 | Dedham, MA/Hamburg, Ger | 116 | BPAD MAR 13, HAMBOX 27-3-70, fancy PAID | SG 4-81, 328 |
| 03/13/70 | Boston, MA/Dresden, Ger | 116 | BPAD MAR 14, HAMBOX 27-3-70 | Burrage find |
| 03/13/70 | Hartford, CT/Copenhagen, Den | 116, 114-2 | NYPAD MAR 19, BREMBOX (?) illegible | 475 RAS 573 |
| 03/14/70 | Boston, MA/Dresden, Ger | 116 | BPAD MAR 14, HAMBOX 27-3-70 | HH 3-72, 189 |
| 03/15/70 | Hartford, CT/Copenhagen, Den | [116], 114-2 | NYPAD MAR 19, BREMBOX 1-4-70, 116 missing | 527 RAS 340 |
| 03/16/70 | New York, NY/Stuttgart, Ger | 116, 114, 113 | NYPABRTR MAR 16, V-C 28-3-5 (15c rate) | 4 Juhring 488 |
| 03/18/70 | Wilmington, DE/Bremen, Ger | 116 | NYPAD MAR 19 | 14 JKauf 517 |
| 03/18/70 | Philadelphia, PA/Paris, Fr | 116 | GB/40, CALAIS 31 MARS 70, 10 due | R. Stets |
| 03/19/70 | New York, NY/Ger | 116 | NYPAD MAR 19, BREMBOX 1-4-70 | 13 JKauf 70 |
| 03/19/70 | New York, NY/Lyon, Fr | 116 | NY "+" MAR 19, Fr oct 19 MARS, 8 due | 590 RAS 385 |
| 03/2 /70 | Philadelphia, PA/Paris, Fr | 116 | CALAIS 9 AVRIL 70, GB/40, 5 due | 11-82 SPB 220 |
| 03/2-/70 | Baltimore, MD/Ger | 116 | NYPAD MAR 29, HAMBOX 13-4-70, PAID ALL | Fraj 9-82, 652 |
| 03/20/70 | New Orleans, LA/Fr | 116 | NY "+" MAR 29, CHERBOURG 13 AVRIL, 8 due | Elliott Coulter |
| 03/21/70 | Boston, MA/Dresden, Ger | 116 | BPAD MAR 21, HAMBOX 3-4-70 | Burrage corr. |
| 03/21/70 | Greencastle, PA/Berlin, Ger | 116-2 | NYPAD MAR 22, HAMBOX 3-4-70 | Jack Molesworth |
| 03/22/70 | New York, NY/Wurttemberg, Ger | 116 | NYPAD MAR 22, HAMBOX 3-4-70 | Shierson 274 |
| 03/22/70 | unknown, IA/Ger | 116 | CPAD (rev) MAR 24, BREMBOX 10-4-70 | HRH 11-65 |
| 03/22/70 | New York, NY/Bordeaux, Fr | 116 | NY MAR 22, CHERBOURG 3 AVRIL 70, 8 due | Mel Schuh |
| 03/22/70 | Pittsburgh, PA/Paris, Fr | 116-2 | NY "+" MAR 24, Salles 1791 9 AVRIL 70 | Fred Lopez |
| 03/22/70 | Philadelphia, PA/Paris, Fr | 116 | CALAIS ? AVRIL 70, GB/40, 5 due | ML |
| 03/23/70 | Milwaukee, WI/Bremen, Ger | 116 | BREMBOX 10-4-70 | ex Haas |
| 03/24/70 | Washington, DC/Paris, Fr | 116 | NY "+" MAR 29, CHERBOURG 13 AVRIL 70, 8 due | 22 RKauf 525 |
| 03/25/70 | Greencastle, PA/Berlin, Ger | 116 | BREMBOX 10-4-70, forwarded to Paris, | ML records |
| 03/25/70 | Hartford, CT/Copenhagen, Den | 116, 114-2 | NYPAD MAR 26, BREMBOX XX-X-70 | 475 RAS 576 |
| 03/25/70 | Washington, DC/C'ople, Turkey | 116-2 | fr2, 5, V-C, via NGU, cover front only | 2 Juhring 221 |
| 03/25/70 | New Orleans, LA/Bordeaux, Fr | 116 | NY "+" APR 2, Fr oct 2 Avril 70, 8 due | Four Star 4-83 |
| 03/26/70 | New York, NY/Worms, Ger | 116 | NYPAD MAR 26, BREMBOX 10-4-70 | 503 RAS 502 |
| 03/27/70 | Pittsburgh, PA/Paris, Fr | 116-2 | NY "+" MAR 29, CHERBOURG 13 AVRIL 70, 16 | Simmy 5-11-83 |
| 03/28/70 | Boston, MA/Dresden, Ger | 116 | BPAD MAR 28, HAMBOX 13-4-70, Burrage corr. | A. Levitt |
| 03/28/70 | Boston, MA/Baden, Ger | 116 | BPAD MAR 28, HAMBOX 13-4-70 | W. J. Orton III |
| 03/28/70 | Philadelphia, PA/Paris, Fr | 116 | CHERBOURG 13 AVRIL 70, 8 due | SPB 11-22-82 |
| 03/29/70 | Hartford, CT/Copenhagen, Den | 116, 114-2 | NYPAD APR 2, BOX XX-X-70 | 475 RAS 572 |
| 03/30/70 | Fincastle, VA/Br. Honduras | 116 | Belize 1870, St. Thomas on reverse | Paige 3-13-59 |
| 03/31/70 | London, OH/Bremen, Ger | 116 | NYPAD APR 2, AUSG 14/4, | Hanson find |
| 04/-/70 | Baltimore, MD/Ger | 116 | NYPAD MAR -, HAMBOX 18-4-70 | Gibson 441 |
| 04/01/70 | Baltimore, MD/Ger | 116 | NYPAD APR 2, BREMBOX 14-4-70, PAID ALL | Millard Mack |
| 04/01/70 | Baltimore, MD/Weimar, Ger | 116 | NYPAD APR 2, BREMBOX 14-4-70, PAID ALL | Mel Schuh |
| 04/02/70 | New York, NY/Osterholz, Ger | 116 | NYPAD APR 2, BREMBOX 14-4-70 | Zimm 3-75, 348 |

1869 10c cover listing

| date | origin/destination | stamps used | descriptive remarks | source |
|----------|--------------------------------|-------------------------|---|-----------------|
| 04/02/70 | New York, NY/Eisenath, Ger | 116 | NYPAD APR 2, BREMBOX 14-4-70 | 2 Hessel 699 |
| 04/02/70 | Lambertville, NJ/Paris, Fr | 116 | NY "+" APR 2, Fr oct 2 Avril 70, 8 due | 433 Apfel 1067 |
| 04/02/70 | New York, NY/Paris, Fr | 116 | NY "+" APR 2, CALAIS 13 AVRIL 70, GB/40, 10 | Millard Mack |
| 04/04/70 | Boston, MA/Dresden, Ger | 116 | BPAD APR 4, HAMBOX 18-4-70 | Burrage corr. |
| 04/04/70 | Boston, MA/Dresden, Ger | 116-2 | BPAD, HAMBOX 18-4-70 | Paige 3-27-53 |
| 04/04/70 | Boston, MA/Dresden, Ger | 116-3 | BPAD, HAMBOX 18-4-70 | 583 RAS 513 |
| 04/04/70 | Cincinnati, OH/Swed | 116, two stamps missing | NYPAD APR 9, BREMBOX 20-4-70 | 527 RAS ex 340 |
| 04/05/70 | New York, NY/Bremen | 116 | NYPAD APR 5, HAMBOX 18-4-70 | 74 JKauff 209 |
| 04/05/70 | Rossville, NY/Hanover, Ger | 116 | NYPAD APR 9, BREMBOX 20-4-70 | Wes Crozier |
| 04/05/70 | Chicago, IL/Marburg, Ger | 116 | CPAD (rev) illegible, BREMBOX 2X-4-7X | 622 RAS 1335 |
| 04/05/70 | New York, NY/Den | 116, 114 | NYPAD APR 5 | David Beals |
| 04/05/70 | unknown/Carlsrona, Swed | 116, 119b, 114 | NYPAD APR 5, HAMBOX 18-4-70, may not exist | L&S 12-15-59 |
| 04/05/70 | Newark, NJ/Beirut, Turkey | 116-3 | NYPABTR APR 6, 5, f2, V-C 4-18, via NGU | Fred Lopez |
| 04/05/70 | New York, NY/Paris, Fr | 116 | NY "+" APR 5, CHER 17 AVR 70, "TOO LATE", 8 | 161 Herst 84 |
| 04/05/70 | New York, NY/Paris, Fr | 116 | Same as Herst cover, q.v. (but different) | Feld 4-83 21600 |
| 04/06/70 | St. Louis, MO/Bremerhaven, Ger | 116 | NYPAD APR 9, BREMBOX 20-4-70 | 452 RAS 545 |
| 04/06/70 | San Francisco, CA/Bordeaux, Fr | 116 | NY "+" APR 16, Fr oct 16 AVRIL 70, 8 due | Hendershot 3-83 |
| 04/08/70 | San Francisco, CA/Bordeaux, Fr | 116 | NY unclear, Fr oct 16 Avril 70, 8 due | 4 Juhring 474 |
| 04/09/70 | New York, NY/Ger | 116 | NYFM, NYPAD APR 9, BREMBOX 20-4-70 | 115 Wolff 2762 |
| 04/09/70 | London, OH/Bremen, Ger | 116 | NYPAD APR 12, AUG 27/4 | Hanson find |
| 04/11/70 | Boston, MA/Dresden, Ger | 116 | BPAD APR 11, HAMBOX 26-4-70 | Burrage corr. |
| 04/11/70 | Boston, MA/Dresden, Ger | 116 | BPAD APR 11, HAMBOX 26-4-70, Burrage corr. | 2nd this date |
| 04/11/70 | Hartford, CT/Copenhagen, Den | 116, 114 | NYPAD APR 12, HAMBOX 26-4-70 | 475 RAS 570 |
| 04/11/70 | Savannah, GA/Paris, Fr | 116 | NY "+" APR 16, Fr oct 16 Avril 70, 8 due | 569 RAS 827 |
| 04/11/70 | Chicago, IL/Lyons, Fr | 116-2 | NYPABTR APR 13, LONPD 25 AP 70, PD, CR 8 | 526 RAS 201 |
| 04/12/70 | Montrose, PA/Berlin, Ger | 116-2 | NYPABTR APR 13, V-C 26-4-3 (15c rate) | 583 RAS 511 |
| 04/12/70 | New York, NY/Nice, Fr | 116 | NY APR 12, CHERBOURG 25 AVRIL 70, 8 due | Paul Bourke |
| 04/13/70 | Racine, WI/Hamburg, Ger | 116 | CPAD (rev) APR 14, BREMBOX 28-4-70 | Chandler 4-83 |
| 04/13/70 | Watertown, MA/Paris, Fr | 116 | CHERBOURG 1 MAI 70, 8 | 41 SPB 1240 |
| 04/17/70 | New Orleans, LA/Hanover, Ger | 116, 114, 113 | NYPABTR APR 21, V-C 3-5-3 (15c rate) | ML |
| 04/18/70 | Boston, MA/Dresden, Ger | 116 | BPAD | 657 HRH 4-6-72 |
| 04/18/70 | Richmond, VA/Ger | 116 | NYPAD APR —, HAMBOX 1-5-[70] | 1186 RAS 5-71 |
| 04/18/70 | Philadelphia, PA/Paris, Fr | 116 | CHERBOURG 1 MAI 70, 8 due | 115 Wolff 2760 |
| 04/18/70 | Phgiladelphia, PA/Paris, Fr | 116 | CHERBOURG 1 MAI 70, 8 due | 458 RAS 1311 |
| 04/18/70 | Philadelphia, PA/Paris, Fr | 116-2 | CHERBOURG 1 MAI 70, 16 due | Clifton Smith |
| 04/19/70 | New York, NY/Paris, Fr | 116 | NY "+" APR 19, CHER 1 MAI 70, 8, SHORT PAID | 452 RAS 547 |
| 04/19/70 | New Orleans, LA/Bordeaux, Fr | 116-2 | NY "+" APR 26, 16 due, Cherbourg illegible | 210 RAS 755 |
| 04/20/70 | Pittsburgh, PA/Paris, Fr | 116-2 | NY "+" APR 26, CHERBOURG 8 MAI 70, 16 due | 417 RAS 1506 |
| 04/21/70 | Vicksburg, MS/Jackson, MS | 116-2, 114 | overpaying 21c rate (?) | ML |
| 04/22/70 | Pittsburgh, PA/Paris, Fr | 116 | NY APR 26, CHERBOURG 8 MAI 70, 8 due | Jack Molesworth |
| 04/22/70 | Philadelphia, PA/Paris, Fr | 116 | CALAIS 5 MAI 70, GB/40, 5 due | 3 Juhring 763 |
| 04/22/70 | Philadelphia, PA/Antigua, BHI | 116 | St. Thomas AP 29 70, Antigua MY 3 70 | HRH 4-7-72, 659 |
| 04/23/70 | New York, NY/Fr | 116, 113, 3c Nesbitt | NYPABTR APR 23, LONPD MAY 4, PD, CR 8 | Millard Mack |
| 04/25/70 | Boston, MA/Dresden, Ger | 116 | BPAD APR 25, HAMBOX 8-5-7- | Henry Spellman |
| 04/25/70 | Boston, MA/Dresden, Ger | 116 | BPAD APR 25, HAMBOX 8-5-70 | Burrage corr. |
| 04/26/70 | Columbus, OH/Ger | 116 | NYPAD APR ??, BREMBOX 13-5(?) -70 | HRH 11-77, 2142 |
| 04/26/70 | Hartford, CT/Copenhagen, Den | 116, 114-2, 113 | NYPABTR APR 27, V-C 10-5-3 | 475 RAS 577 |
| 04/26/70 | [Hartford, CT]/Copenhagen, Den | 116, [114] missing | NYPAD APR 30, BREMBOX 13-5-70 | 527 RAS 340 |
| 04/26/70 | New York, NY/Paris, Fr | 116 | NY "+" APR 26, CHER 8 MAI, 8, SHORT PAID | Fred Lopez |
| 04/26/70 | New York, NY/Paris, Fr | 116 | NY "+" APR 26, CHER 8 MAI, 8, SHORT PAID | 43 Spellman 46 |
| 04/27/70 | London, OH/Bremen, Ger | 116 | NYPAD APR 30, AUG 13/5 | Hanson find |
| 04/30/70 | Williamsburgh, NY/Ger | 116 | no decipherable markings | Wayne Hassell |
| 04/30/70 | New York, NY/Vaucluse, Fr | 116 | NY "+" APR 30, Fr oct 30 Avril 70, 8 due | 4 Juhring 468 |
| 04/30/70 | Cincinnati, OH/Fr | 116 | NY "+" MAY 3[?], CHER 15 MAI 70, 16 due | Simmy 10-7-82 |
| 05/-/70 | Peoria, IL/Leipzig, Ger | 116-2 | CPAD (rev), BREMBOX 2-6-70 | Wunsch 419 |
| 05/02/70 | Watertown, MA/Paris, Fr | 116 | NY "+" MAY 3, CHERBOURG 15 MAI 70, 8 due | 527 RAS 343 |
| 05/02/70 | New York, NY/Paris, Fr | 116-3 | NYPABTR MAY 2, LONPD 14 MY 70, PD, CR 16 | Prof. A. Stappo |
| 05/03/70 | Hartford, CT/Copenhagen, Den | 116, 114-2 | NYPAD MAY 3, HAMBOX 15-5-70 | 475 RAS 571 |

1869 10c cover listing

| date | origin/destination | stamps used | descriptive remarks | source |
|----------|--------------------------------|--------------------------|--|------------------|
| 05/05/70 | New York, NY/Leipzig, Ger | 116 | NYPAD MAY [5], BREMBOX 19-5-70 | JKauf 9-74, 399 |
| 05/05/70 | London, OH/Bremen, Ger | 116 | NYPAD MAY 7, AUSG 20/5 | Hanson find |
| 05/06/70 | Hartford, CT/Copenhagen, Den | 116, 114-2 | NYPAD MAY 7, BREMBOX 20-5-70 | 475 RAS 575 |
| 05/06/70 | New Orleans, LA/Gironde, Fr | 116 | NY"+ MAY 10, CHERBOURG 23 MAI | 4-4-72 RAS 1073 |
| 05/06/70 | Watertown, MA/Paris, Fr | 116 | NY"+ MAY 10, CHERBOURG 23 MAI 70 | 3 HESSEL 589 |
| 05/06/70 | Philadelphia, PA/Paris, Fr | 116 | CALAIS 19 MAI 70, GB/40, 15 due | 11-82 SPB 223 |
| 05/07/70 | New Orleans, LA/Paris, Fr | 116 | NY"+ MAY 14, Fr oct 14 MAI 70 | RKauf 3-80, 258 |
| 05/09/70 | Boston, MA/Dresden, Ger | 116 | BPAD [MAY 9], HAMBOX 23 [24?]-5-70 | ML records |
| 05/09/70 | Cold Spring, NY/Paris, Fr | 116 | CHERBOURG, 8 due, bkstp 23 MAI 70 | J. L. Gemmill |
| 05/10/70 | Hartford, CT/Corsica | 116 | NY"+ MAY 10, CHRBG 23 MAI 70, 16 due, find | 81 JKauf 826 |
| 05/11/70 | Pittsburgh, PA/Paris, Fr | 116-3 | NY"+ MAY 14, Fr oct 14 MAI 70, 32 due | 417 RAS 1508 |
| 05/11/70 | New Orleans, LA/Bordeaux, Fr | 116 | NY"+ MAY 17, CHERBOURG 29 MAI, 8 due | 3 Hessel 590 |
| 05/12/70 | Carbondale, IL/Thym, Norway | 116, 114, 113 | CHI 5: MAY 12, 2 Sgr, -24, 25 | ML |
| 05/13/70 | Philadelphia, PA/Paris, Fr | 116 | Fr oct 14 MAI 70 | SPB 22 Nov 82 |
| 05/14/70 | Mobile, AL/Corsica | 116, 114 | NY"+ MAY 18, 8 due | 2-75 HRH 79 |
| 05/16/70 | Walton, KY/Alfred, ME | 116, 113, 114, 147 | 3c + 15c registry fee | ML |
| | | | H. B. Shaw corr. | |
| 05/18/70 | London, OH/Bremen, Ger | 116 | NYPAD MAY 21, AUSG 2/6 | Hanson find |
| 05/19/70 | Scriba, NY/Alfred, ME | 116, 113, 2-114 | 3c + 15c registry fee | Siegel 342, 743 |
| 05/19/70 | San Francisco, CA/H'berg, Ger | 116 | NYPAD MAY 28, BREMBOX 9-6-70 | RAS 6-12-73, 263 |
| 05/2-70 | St. Louis, MO/Ger | 116-2 | NYPAD MAY 2-, BREMBOX 9-6-70 | Morrison Maud |
| 05/2-70 | Peoria, IL/Leipzig, Ger | 116, U40 | BREMBOX 9-6-70 | Gibson 451 |
| 05/20/70 | Hartford, CT/Copenhagen, Den | 116, 114-2 | NYPAD XXX, BREMBOX 2-6-70 | 527 RAS 340 |
| 05/21/70 | Williamsburgh, NY/Ger | 116 | NYPAD MAY 24, HAMBOX 7-6-70 | Kel 6-82, 738 |
| 05/22/70 | Annapolis, MD/Rio, Brazil | 116 | NY "x" MAY 23 | ML |
| 05/23/70 | Boston, MA/Dresden, Ger | 116 | BPAD MAY 23, HAMBOX 7-6-70 | Gerald Neufeld |
| 05/23/70 | Paterson, NJ/Rio, Brazil | 116 | Paterson cds MAY 23 | 529 RAS 416 |
| 05/23/70 | N. Colebrook, CT/Uruguay | 116 | U.S. PKT 8 MAY 23 | 1 Juhring 777 |
| 05/25/70 | Council Bluffs, IA/Lund, Swed | 116, 114, 112 | CHI MAY 25, HAMBOX 12-6-70, 1 1/2 Wf | 1 Juhring 794 |
| 05/27/70 | Cincinnati, OH/Swed | 116, 146-2 | HAMBOX 12-6-70, NYcr4, 1 1/2 Wf. | HRH 1-11-72, 86 |
| 05/27/70 | Hartford, CT/Gothenburg, Swed | 116, 114-3 | NYPABTR MAY 28, V-C 6-5, 4, 1 1/2 | 475 RAS 581 |
| 05/27/70 | Philadelphia, PA/Paris, Fr | 116 | PHILAD'A MAY 27, fr oct 2? /mai 70, 16 due | SPB 22 NOV 82 |
| 05/31/70 | Rochester, NY/Ger | 116, Baden 22 (3 kr) | NYPAD JUN 2, BREMBOX 15-6-70, redirected | Ryo Ishikawa |
| 06/02/70 | Terre Haute, IN/Thuringen, Ger | 116 | NYPAD JUN 4, BREMBOX 1X-6-70 | 551 RAS 2042 |
| 06/02/70 | Watertown, MA/Paris, Fr | 116 | BOS JUN 3, GB/40, 5 due | ML |
| 06/03/70 | San Francisco, CA/Bordeaux, Fr | 116 | NY"+ JUN 11, Fr oct 11 JUIN 70, 16 due | Millard Mack |
| 06/04/70 | New York, NY/Stuttgart, Ger | 116 | NYPAD JUN 4, BREMBOX 17-6-70 | 575 RAS 699 |
| 06/04/70 | Hartford, CT/Gothenburg, Swed | 116, 114-2 | NYPAD JUN ?, BREMBOX 17-6-70, 4, 1 1/2 | 475 RAS 574 |
| 06/05/70 | Sanbuenaventura, CA/Ger | 116 | BREMBOX 1-7-70 | Ex Haas |
| 06/06/70 | Chicago, IL/Lyons, Fr | 116-2 | LONPD 20 JU 70, PD, CR 8 | 374 RAS 1087 |
| 06/07/70 | Coldspring, NY/Paris, Fr | 116 | NY"+ JUN 7, Fr oct 11 JUIN 70, 8 due | Jack Molesworth |
| 06/08/70 | Washington, MO/Ger | 116 | NYPAD JUN 11, BREMBOX 23-6-70 | ex Grunin |
| 06/08/70 | London, OH/Bremen, Ger | 116 | NYPAD JUN 11, AUSG 24/6 | Hanson find |
| 06/09/70 | Hartford, CT/Copenhagen, Den | 116-2, 114-3, 113 | BREMBOX 23-6-70, 1c stamp assumed missing | 475 RAS 580 |
| 06/10/70 | Atlanta, IL/Mainz, Ger | 116 | CPAD, HAMBOX 26-6-70 | 598 RAS 169 |
| 06/13/70 | Boston, MA/Dresden, Ger | 116 | BPAD JUN 13, HAMBOX 26-6-70 | 4 Juhring 467 |
| 06/13/70 | Troy, NY/Ger | 116 | NYPAD JUN 14, HAMBOX 26-6-70 | RAS 6-12-73, 259 |
| 06/13/70 | Pittsburgh, PA/Paris, Fr | 116-3, 119 | NYPABTR JUN 15, CR 48/3, 15c stamp lost? | 563 Kell 898 |
| 06/16/70 | Meadville, PA/Paris, Fr | 116 | NY"+ JUN 21, CHERBOURG 3 JUIL 70 | 417 RAS 1505 |
| 06/16/70 | Watertown, MA/Paris, Fr | 116 | BOS JUN 17, CALAIS 30 JUIN 70, GB/40, 5 | 422 RAS 271 |
| 06/17/70 | Hartford, CT/Gothenburg, Swed | 116, 114, [115 missing?] | NYPABTR ?, V-C 30-6-7-3 | 527 RAS ex 340 |
| 06/2-70 | Boston, MA/Dresden, Ger | 116 | BPAD JUN 29, BREMBOX 14-7-70 | ML records |
| 06/20/70 | Providence, RI/France | 116 | NY"+ JUN 21, CHERBOURG 3 JUIL 70, 8 due | 561 RAS 209 |
| 06/21/70 | Chicago, IL/Ger | 116 | BREMBOX 7-7-70 | A. Stappo |
| 06/21/70 | New Orleans, LA/Bordeaux, Fr | 116 | NY"+ JUN 25, Fr oct 25 JUIN 70 | 529 RAS 411 |
| 06/22/70 | Pittsburgh, PA/Paris, Fr | 116-3, 119 | NYPABTR 25 JUN, CR 32/2, LONPD 6 JY 70, PD | 458 RAS 1327 |
| 06/24/70 | Watertown, MA/Paris, Fr | 116 | NY"+ JUN 25, Fr oct 25 JUIN 70 | RAS 4-29-69 514 |
| 06/27/70 | Watertown, MA/Paris, Fr | 116 | NY"+ JUN 28, CHERBOURG 9 JUIL 70, 8 due | Fred Lopez |
| 06/27/70 | Newport RI/Paris, Fr | 116 | NY"+ JUN 28, CHERBOURG 9 JUIL 70, 8 | 590 RAS 390 |

1869 10c cover listing

| date | origin/destination | stamps used | descriptive remarks | source |
|----------|--------------------------------|-----------------------|---|------------------|
| 06/28/70 | New Orleans, LA/Paris, Fr | 116 | NY"+ JUN 28, CHERBOURG 9 JUL 70 | Scott Gallagher |
| 06/29/70 | New Orleans, LA/Paris, FR | 116 | NY"+ JUL 5, Salles 1777 18 JUL 70, 8 due | ML |
| 06/29/70 | New Orleans, LA/Bordeaux, Fr | 116 | NY"+ JUL 5, Salles 1777 18 JUL 70 | 590 RAS 380 |
| 06/30/70 | Montrose, PA/Paris, Fr | 116-2 | NYPABTR JUL 6, LONPD 18 JY 70, CR 12, PD | 4 Juhring 482 |
| 07/01/70 | Hartford, CT/Gothenburg, Swed | 116, 114-2, 113 | NYPAD JUL 2, BREMBOX 14[?]-7-70, 4 | 475 RAS 578 |
| 07/02/70 | Ft. Wayne, IN/Ger | 116 | NYPABTR, V-C, both illegible | 519 RAS 556 |
| 07/05/70 | Chicago, IL/Copenhagen, Den | 116, 147 | BREMBOX 21-7-70 | 2 Knapp 1795 |
| 07/07/70 | Milwaukee, WI/Hanover, Ger | 116 | CPAD (rev) JUL 7, BREMBOX 21-7-70 | 4 Juhring 465 |
| 07/07/70 | Hartford, CT/Gothenburg, Swed | 116, 114-2, 113 | NYPAD JUL 9, BREMBOX 21-7-70, 4 | 475 RAS 579 |
| 07/08/70 | New Orleans, LA/Fr | 116, 113 on 3c entire | NY"+ JUL 12, CALAIS 23 JUL 70, GB/40, 5 | 12-53 Paige 494 |
| 07/08/70 | New Orleans, LA/Gironde, Fr | 116 | NY"+ JUL 12, CALAIS 23 JUL 70, 5 DUE | 590 RAS 386 |
| 07/11/70 | Pittsburgh, PA/Bremen, Ger | 116-2 | NYPABTR JUL 1X | ml |
| 07/15/70 | Cincinnati, OH/Ger | 116-2 | NYPABTR JUL 19 | Downing 1319 |
| 07/15/70 | Hartford, CT/Gothenburg, Swed | 116, 113, 147-2 | NYPABTR JUL 16, 4, Wf1 1/2 | 475 RAS 583 |
| 07/18/70 | Newark, NJ/Beirut, Turkey | 116, 150-3 | NYPAD JUL 19, 10, Wf 4, via NGU | Kelleher 4-67 |
| 07/18/70 | New Orleans, LA/Paris, Fr | 116 | NY"+ JUL 23, Fr oct 23 JUL 70, 8 due | 452 RAS 546 |
| 07/19/70 | New Orleans, LA/Bordeaux, Fr | 116 | NY"+ JUL 23, Fr oct 23 JUL 70, 16 due | Paige 3-55 433 |
| 07/19/70 | Wilmington, DE/Paris, Fr | 116, 76 | NYPABTR 21 JUL, CALAIS 2 AOUT 70, PD, CR6 | P-F files (SBA) |
| 07/20/70 | Chicago, IL/Ger | 116, 115, 92 on U58 | NYPABTR JUL 23 | SG Merkur 4-79 |
| 07/22/70 | Hartford, CT/Gothenburg, Swed | 116-2 | NYPABTR JUL 23, 1 1/2 | 475 RAS 586 |
| 07/25/70 | Cannelton, IN/Frankfurt, Ger | 116 | NYPABTR JUL 30, missent to Frankfurt, KY | 243 RAS 220 |
| 07/28/70 | New Orleans, LA/Paris, Fr | 116 | NYPABTR AUG 3, LONPD 16 AU 70, PD, CR 6 | 527 RAS 344 |
| 07/29/70 | Hartford, CT/Gothenburg, Swed | 116-2 | NY [with 4] JUL 30, Wfr 1 1/2 | 475 RAS 585 |
| 08/-/70 | Waverly, IA/Oldenburg, Ger | 116 | NYPABTR AUG 10 | 4 Holl'busch 126 |
| 08/-2/70 | Grand Island Sta, NE/Ger | 116 | NYPABTR illegible | RAS 5-20-69 508 |
| 08/01/70 | San Francisco, CA/Bordeaux, Fr | 116 | NYPABTR AUG 10, LONPD 22 AU 70, CR 6, PD | ML records |
| 08/02/70 | San Francisco, CA/Gironde, Fr | 116 | NYPABTR AUG 13, LONPD ? AU 70, CR 6, PD | 526 RAS 197 |
| 08/03/70 | San Francisco, CA/Paris, Fr | 116 | LONPD 24 AU 70, PD, CR 6 | 10-83 HRH 135 |
| 08/04/70 | Nashville, TN/Paris, Fr | 116 | NYPABTR AUG 10, LONPD 22 AU 70, PD, CR 6 | Jeffrey Forster |
| 08/05/70 | Hartford, CT/Gothenburg, Swed | 116, 136-3 | NY [with 4] AUG 6, Wfr 1 1/2 | 475 RAS 584 |
| 08/06/70 | Mayville, WI/Cologne, Ger | 116 | NYPABTR AUG 10 | RAS 5-4-72 1076 |
| 08/08/70 | Dedham, MA/Heidelberg, Ger | 116 | NYPABTR AUG 10 | RAS 6-12-73 268 |
| 08/09/70 | New Orleans, LA/Versailles, Fr | 116 | LONPD 29 AU 70, PD, CR 6 | ML |
| 08/10/70 | Pittsburgh, PA/Bremen, Ger | 116-2 | NYPABTR AUG 10, Fleming correspondence | 41 SPB 1243 |
| 08/10/70 | San Francisco, CA/Ger | 116 | NYPABTR AUG 18 | 82 Register 7 |
| 08/12/70 | San Francisco, CA/Paris, Fr | 116 | NY"+ AUG 20, CALAIS 31 AOUT 70, GB/40, 15 | 526 RAS 200 |
| 08/18/70 | Dedham, MA/Heidelberg, Ger | 116 | NYPABTR AUG 20 | Alan Atkins |
| 08/18/70 | Cincinnati, OH/Bordeaux, Fr | 116 | NY"+ AUG 20, Fr oct 20 AOUT 70, 8 due | Paige 5-62 407 |
| 08/19/70 | Wilmington, DE/Paris, Fr | 116 | NY"x AUG 20, Fr oct 20 AOUT 70, 8 due | E. P. Babcock |
| 08/25/70 | Cincinnati, OH/Bavaria, Ger | 116-2 | NYPABTR AUG 27 | 107 Wolff 123 |
| 08/27/70 | Danville, PA/Brieg, Poland | 116 | NYPABTR AUG 31 | 590 RAS 384 |
| 08/29/70 | Danville, NY/Munster, Ger | 116 | NYPABTR AUG 31 | 316 Conway 33 |
| 09/-/70 | New Haven CT/Paris, Fr | 116-2 on U58 | Winchester Arms CC, Fr oct illeg, 24 due | 503 RAS 503 |
| 09/07/70 | Iowa City, IA/Hesse, Ger | 116 | NYPABTR SEP 10 | 4 Juhring 471 |
| 09/09/70 | New Orleans, LA/Paris, Fr | 116-2 | NY"+ JUN 14, CHERBOURG 25 JUIN 70, due 16 | 2-12-80 HRH 389 |
| 09/12/70 | Providence, RI/Heidelberg, Ger | 116 | NYPABTR SEP 14 | Koerb 6-80 480 |
| 09/19/70 | New Castle, KY/LaGrange, KY | 116-2, 78, 145 | 15 times 3c rate three issue franking | ML |
| 09/19/70 | St. Joseph, MO/Ger | 116 | NYPABTR SEP 2? | Paige 4-60 547 |
| 09/21/70 | New York, NY/Rome, Italy | 116, 146-2 | NYFM type 517, P.D., 1 1/2, via NGU | ML records |
| 09/28/70 | Kirkwood, MO/Siegen, Ger | 116 | NYPABTR OCT ? | Hubbard 383 |
| 10/01/70 | San Francisco, CA/Gironde, Fr | 116 | NYPABTR, LONPD 24 OC 70, PD, CR 6 | ex Haas |
| 10/11/70 | Linden, MS/Rio, Brazil | 116 on 3c pink entire | NY PAID ALL OCT 24 | 4 Juhring 480 |
| 10/16/70 | St. Louis, MO/Oldenburg, Ger | 116 | NYPABTR OCT 19 | Wolff 3-82 427 |
| 11/07/70 | Marston's Mills, MA/Lynn, MA | 116, 113, 147 | 5 times 3c rate | 2 Juhring 222 |
| 11/08/70 | New Orleans, LA/Bordeaux, Fr | 116, 146 | NY NOV 16, CHERBOURG 29 NOV, 8 due | 2627 HRH 2131 |
| 11/09/70 | Columbia, SC/Chesterfield, SC | 116-2, 145 | 2x3c + 15c registry fee | Krug 758 |

1869 10c cover listing

| date | origin/destination | stamps used | descriptive remarks | source |
|----------|----------------------------------|---------------------------|---|-----------------------|
| 11/11/70 | Dedham, MA/Hamburg, Ger | 116 | NYPABTR NOV 12 | MM GM 11-21-81 765 |
| 11/14/70 | Dedham, MA/Hamburg, Ger | 116 | NYPABTR NOV 16 | 4 Juhring 470 |
| 11/18/70 | San Francisco, CA/Fr | 116-2 | NY "+" NOV 26, Fr oct 30 NOV 70, 8 due | 4 Juhring 484 |
| 12/23/70 | Savannah, GA/Bremen, Ger | 116 | NYPABTR DEC 28 | 29 Alevis 1294 |
| 12/29/70 | St. Mary's, PA/Ger | 116 | NYPABTR DEC 31 | 507 RAS 329 |
| 12/30/70 | San Francisco, CA/Bordeaux, Fr | 116 | NYPABTR JAN 7, LONPD 18 JA 71, PD | John R. Drew |
| 01/23/71 | Dedham, MA/Berlin, Ger | 116 | NYPABTR ?? | 575 RAS 700 |
| 01/23/71 | Dedham, MA/Berlin, Ger | 116 | NYPAD JAN 25 | Jack Molesworth |
| 01/27/71 | Pleasanton, KS/Knightstown, IN | 116, 146, 2-147 | 3c + 15c registry fee octagon cancel | RAS 1-25-83, 158 |
| 01/27/71 | Bay, MO/Ger | 116 | NYPABTR JAN 30 | Dave Beals |
| 02/03/71 | illegible/Prussia, Ger | 116, 113, 147 | NYPABTR FEB 3(?) | DFeldman 5-82 |
| 02/10/71 | Baraboo, WI/Strasland, Ger | 116 | NYPABTR FEB 14, Grant-Colfax campaign env | S. Brown 1332 |
| 02/13/71 | Dedham, MA/Berlin, Ger | 116 | BPAD FEB 13, HAMBOX 27-2-71 | Hubbard 387 |
| 03--/71 | Savanna, IL/Wurttemberg, Ger | 116 | NYPABTR MAR 28 | 4 Juhring 464 |
| 04/05/71 | Comptonville, CA/Fr | 116 | NY cr 6 APR 15, LONPD 26 AP 71, PD | 55 Wolff 61 |
| 04/17/71 | Richfield Springs, NY/CD. OH | 116, 147, 146, U82 | CD. = Canal Dover 3c + 15c registry fee | 1 Juhring 799 |
| 04/17/71 | Port Gibson, MS/Rio, Brazil | 116 on 3c entire | NEW YORK PAID ALL APR 24, RIO 19 MAI 71 | 1 Juhring 800 |
| 04/22/71 | Mt. Carmel, IL/Ger | 116 | NYPAD APR 27, BREMBOX 11-5-71 | Walter Orton |
| 05/01/71 | Madison, WI/Berlin, Ger | 116 | NYPABTR MAY 4, 116 on reverse | Grant Crowell |
| 05/01/71 | Nat Mil Asylum, O/Alsace, Ger | 116-2 | NYPABTR MAY 4 | Chron 107, 206 |
| 05/01/71 | Nat Mil Asylum, OH/Alsace, Fr | 116-2 | NYBTR MAY 4, Alsace chgd from Fr to Ger | 590 RAS 393 |
| 06/01/71 | New Orleans, LA/Paris, Fr | 116 | NY "+" JUN 7, 8 due | Jack Molesworth |
| 06/29/71 | Sandy Hook, CT/Ger | 116, 76, 146 on U84 | NYPABTR JUL 29 | 333 RAS 840 |
| 07/14/71 | Winnegance, ME/Havre, Fr | 116 | NY "+" JUL 15, Fr oct 15 JUL 71, 5 due | ML |
| 07/14/71 | Winnegance, ME/Havre, Fr | 116 (ANOTHER COVER) | NY "+" JUL 15, Fr oct 15 JUL 71, 5 due | Bruce Hazelton |
| 12/03/71 | Poughkeepsie, NY/Vaucluse, Fr | 116 | NYcr6 DEC 9, LONPD 20 DE 71, PD | 9-82 Philips 113 |
| 12/12/71 | New York, NY/Paris, Fr | 116 | NY DEC 12, CHERBOURG 24 DEC 71, 5 due | ML records |
| 01/23/72 | Winnegance, ME/Havre, Fr | 116 | NY "+" JAN 27, Fr oct 27 JANV 72 | Bruce Hazelton |
| 02/19/72 | Winnegance, ME/Fr | 116 | NYcr6 FEB 21, LONPD, fwd to Wales | Bruce Hazelton |
| 05/10/72 | San Francisco, CA/Fr | 116, 95, 146 | NY MAY 18, Fr oct 18 MAI 72, 5 due | 108 Wolff 841 |
| 05/14/72 | San Francisco, CA/Bordeaux, Fr | 116, 150 | NYcr12 ?, LONPD ?, PD | ML |
| 06/11/72 | San Francisco, CA/Fr | 116, 95, 146 | NYcr12 JUN 19, LONPD JY 72, | 526 RAS 203 |
| 07/17/72 | Port Gibson, MS/Rio, Brazil | 116, 146 on 3c entire | NY PAID ALL AUG 23, RIO 19 SET 72 | 4 Juhring 773 |
| 08/20/72 | S. Duxbury, MA/Argentina | 116, 145, 147 | NY AUG 23, US PKT 8 (39mm) | 2 Juhring 223 |
| 09/14/72 | Castroville, TX/Fr | 116 | NYcr6 SEP 25, LONPD 7 OC 72, PD | Krug 749 |
| 09/19/72 | New York, NY/Bordeaux, Fr | 116-2 | NYcr6 SEP 19 | 10-79 SPB 312 |
| 12/25/72 | Harrisburg, PA/Paris, Fr | 116 | NY "+" DEC 28, CHERBOURG 9 JANV 72, 5 due | 97 JKauff 564 |
| --/73 | Castroville, TX/Fr | 116, 145, 147 | "via New York and London" | 366 RAS 1055 |
| 01/18/73 | Eugene, IN/Alfred, ME | 116, 146, 147 | 5 times 3c rate Show correspondence | Krug 759 |
| 02/ /73 | New York, NY/Berlin, Ger | 116, 146 | NYPAD FEB --, HAMBOX 13-3-73 (2x6c rate) | 516 RAS 405 |
| 04/27/74 | Rockford, IL/Floyd County, IL | 116-2, 156, 159 | 9 times 3c rate | ML |
| 05/31/74 | New London, WI/Iron Ridge, WI | 116, U108 | 3c + 8c registry fee unusual combination | ML |
| 10/16/74 | Chesterfield, CT/P'keepsie, NY | 116, 145 | 3c + 8c registry fee | ML records |
| 08/07/75 | Kresgeville, PA/Weissport, PA | 116, 156, 157(?) | 3c postage + 10c registry fee | John Biddle |
| 08/09/75 | Dalton, GA/New Canton, TN | 116, 158 | 3c + 10c registry fee 3c may be a 147 | Gary Hendershot |
| 11/15/75 | Rensselaerville, NY/Quincy, WI | 116, 158 | 3c + 10c registry fee | ML |
| 01/18/76 | Jacksonville, AL/Ashville, AL | 116, U84 | 3c + 10c registry fee | ML |
| 11/11/80 | NEW YORK, NY/Leipzig, Ger | 127, 188 | reissue on registered cover | Barbara Mueller |
| 04/11/82 | Boston, MA/Modena, Italy | 127, 158, 178, 179 | 10c reissue on Mulready facsimile envelope | Elliott Coulter |
| 03/21/83 | New York, NY/Wellington, OH | 127, U164 | 10c reissue from Scott Stamp & Coin Co. | ML |
| / / | Oxford, Miss/Pontotoc, Miss | 112-2:113, 114, 116-1:U58 | 7x3c rate:1c missing:* | M Laurence |
| / / | Jeffersonville, NY/Butternut, NY | 93-2:116-2: | dom reg mail?:overmt letter?: | Hrmer 4/63-278 |
| / / | NYC/?? | 114-1:116-1:121-1: | large piece of cover:* | Juhrg 2/278 |

1869 10c cover listing

| date | origin/destination | stamps used | descriptive remarks | source |
|----------|------------------------------|--------------------|---|-----------------|
| 03/21/83 | ??/?? | 116-3:147-1: | Apfelbaum mail sale 5-27-70, withdrawn | fake |
| / / | NYC/Hartford,Ct | 113-1:114-3:116-1: | reg dom mail:* | Hrmer 10/70-537 |
| / / | Greenville,Me/?? | 116-1:146-1:147-2: | reg dom mail:15c fee:* | Sgl 310/914 |
| / / | Pine Grove,Pa/NYC | 116-1:156-1: | 3c + 8c registry fee:after 7/1/75:* | Ward 6/44-452 |
| / / | Boston, Ma/Dresden,Germany | 116-1: | Boston"INSUFFICIENTLY PAID" in circle:* | Sgl 4/80-210 |
| / / | St. Louis, Mo/Germany | 116-2 | red NYPD-ALL:* | Knapp 2/1725 |
| / / | St. Louis, Mo/Germany | 116-1: | red bxd HAMBURG tied:* | Sgl 5/72-1078 |
| / / | NYC/Hamburg,Germany | 116-1: | Hotel corner card:* | Hrmer 5/71-1398 |
| / / | NYC/Rockenhausen,Germany | 116-1: | red NYPD-ALL:* | Zimmer 7/70-233 |
| / / | Murfreesboro,Tn/Germany | 116-1: | apple cancel:* | Knapp 2/795 |
| / / | Ann Arbor, Mi/Germany | 116-1: | | Knapp 2/1712 |
| / / | Carlton,Wis/Bohemia, Austria | 116-1: | | Sgl 322/382 |
| / / | Coldspring, NY/France | 113-1:114-1:116-1: | | Knapp 2/1734 |
| / / | Philadelphia,Pa/Paris,France | 116-2 | blk NYPD"24": 24 due:Cherbourg rec:* | SPBAG 11/82-221 |
| 03/20/ | San Francisco, Ca/New York | 116-1: | SF pineapple,MAR 20: no year: | Paige 12/62-?? |
| 07/18/ | ??,Md/Jefferson City,Wyoming | 116-1: | 3x3c rate dom mail?:1c overpay?: | Sgl 4/73-266 |
| 08/20/ | Cambridge Sta,Pa/Denver,Colo | 116-1: | "DENVER,COLO REC'D":Terr usage:* | M Laurence |
| 10/23/ | Lansing,Mi/ Kalamazoo,Mi | 116-1: | 3x3c rate dom mail:1c overpay:* | Frajola 1/ 934 |
| 12/05/ | ??/Chester,Pa | 116-1: | San Francisco,12/5:10c Pacific rate?:* | A Atkins |



The 90¢ 1869 POSTSCRIPT



This magnificent upper left marginal block of the 90¢ re-issue has been pictured before, on the cover of the February, 1981 *1869 Times* index. It is shown through the courtesy of Raymond H. Weill Co.

In the discussion (pp.3-8) of the 90c stamp much was left unsaid about such listed varieties as Scott's #122a, the 90c without grill, original gum. There is much controversy about this listing. Is it really a stamp or is it a gummed, perforated proof? You, the reader, can answer that.

On Pg.30 is a rather nice copy of this item, illustrated through the courtesy of Robert A. Siegel Auction Galleries, Inc., of New York. This copy, described in the 1984 Rarities Sale (April 14) as "Fresh, o.g., minor hinge remnant, well-centered, magnificent deep rich colors, light bend on the back (does not break paper fibers), extremely fine (sic!), sold for \$11,550, reportedly [lot 295].

Would any reader with sound, supportable ideas about this variety please write the *1869 Times* with his or her comments and photos if possible? These will be published in an upcoming edition.

What about the re-issue? Above is pictured the largest known piece of this rare item. In fact it is the largest known piece of any 90c 1869 design adhesive still extant to the editor's knowledge. A block of four lists for \$32,500 in Scott's 1985 Specialized Catalogue of U.S. Stamps. The above star could be a six figure crown jewel.

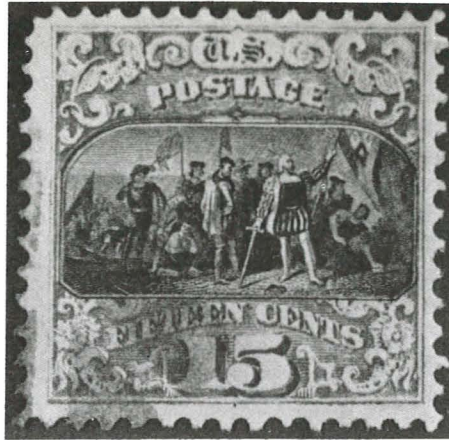
And we have the split grill. Perhaps there are other grill varieties of the 90c stamp: double split? Let the editor know, please.

The earliest known usage of the 90c Lincoln is listed as May 10, 1869. Whence cometh this? Does any reader know for sure? I believe it might derive from an on-piece source, which is not genuine. These three or four items have been kicked around by the Philatelic Foundation. To my knowledge none have been proven genuine. If any reader knows otherwise, please let the editor know.

A final point. The illustrations of the unused blocks in the earlier 90c article were provided by Victor Krievins, our hard-working secretary-treasurer.

Jon Rose, Editor

A LOOK AHEAD



The Type II 1869 bi-color stamp will be featured in the May, 1985 1869 Times when Richard Searing unveils his census report on this stamp used on cover. With the help of Jeff Forster and Dr. Robert H. LeBow, of Idaho, census leader for #119, we now have record of up to 350 #119 covers. But many more are unreported, says Searing, and all 1869 enthusiasts should check again and send in data to Searing based on his computer data readout. This format is found in the preceding 10c census listing, the best to date for the mid-values.

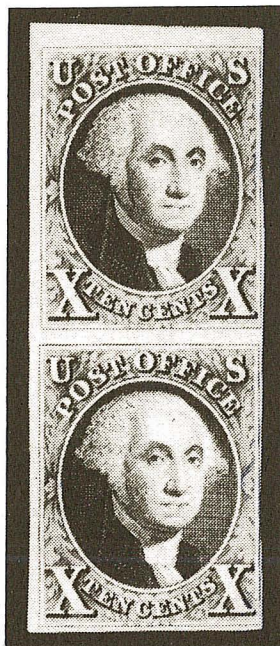
At the top is a nice used example of #119, much more common than the Type I, but scarce in choice condition and very scarce unused, original gum. Blocks like the one at the bottom are another matter indeed. Last summer Robert A. Siegel sold this block for \$4,125. No catalog value is given, but an estimated three used blocks are accounted for by "authorities," so \$4,000 seems quite reasonable.

Members of the 1869 PRA, Inc. should be on the lookout for multiples of four or larger of all values in the set, the re-issues as well. These should be reported to your editor for an upcoming article. In the meantime get census data in on the 6c, 10c, 12c and both 15c stamps, Types I and II. The #118 census to date shows more than 140 genuine covers. That isn't very many, and makes the current catalog value invalid.





**THINK QUALITY. EXPECT QUALITY. GET QUALITY.
COUNT ON WOLFFERS QUALITY EDGE.**



An unused pair of U.S. #2, 1847,
10¢ black, OG. Offered in our
December 1984 auction.

NEXT SALES
APRIL 24, 25, 26, 27 (WESTPEX)
JUNE 26, 27, 28, 29
SEPTEMBER 4, 5, 6
OCTOBER 16, 17, 18
DECEMBER 4, 5, 6

Catalog, including realizations for previous auction, 4 weeks before sale. Send name,
address and \$3.00. VISA and MASTERCARD accepted

RICHARD WOLFFERS, INC.
Stamps of quality Stamp Auctions of integrity

127 Kearny Street, San Francisco, California 94108 • Tel. (415) 781-5127



Recognized Buyers

Roger G. Weill • Raymond H. Weill

Raymond H. Weill Co.

at 407 Royal Street

in New Orleans