

Simple Designs - Miscellaneous



SD-M 1 black, blue
Eau Claire, WI 1861



SD-M 1



SD-M 1A
1861



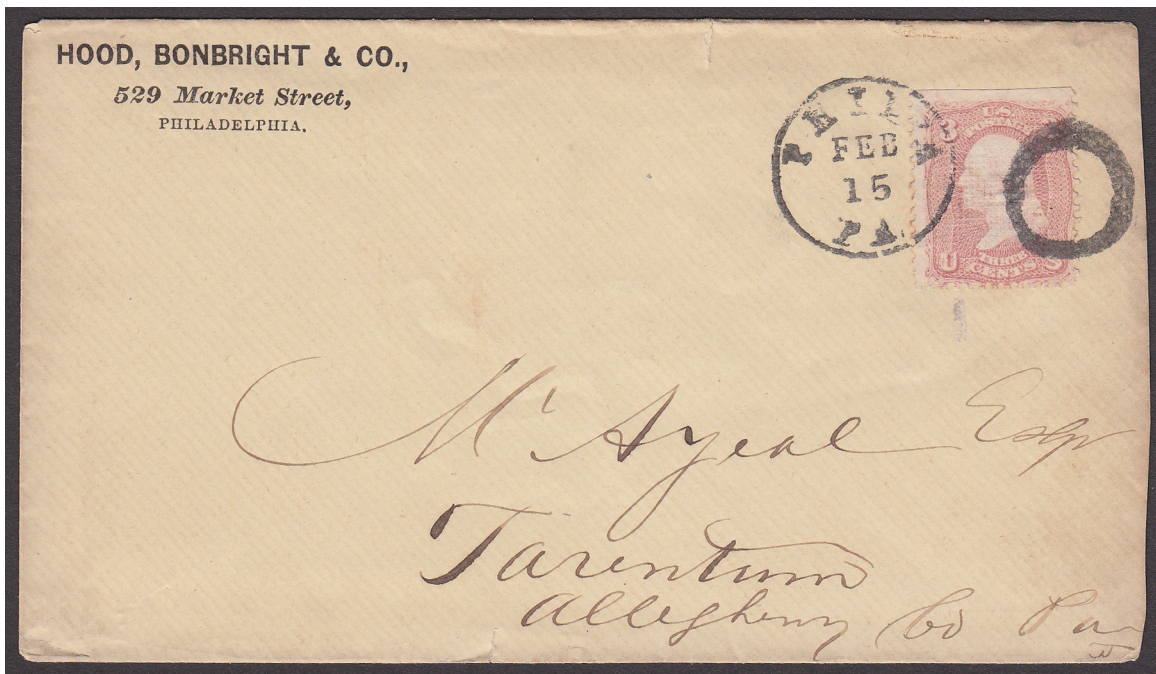
SD-M 2
Hartford, CT 1861



SD-M 2

Simple Designs - Miscellaneous

 <p>SD-M 3 North Haven, CT □ 1861</p>	 <p>"seeing eye" (?) SD-M 4 San Francisco, CA 1861</p>	 <p>"wreath" (?) SD-M 5 Frederica, DE □ 1861</p>	 <p>SD-M 5A Mendham, NJ □ 1861</p>	 <p>"wreath" (?) SD-M 6 1869</p>
 <p>"wreath" (?) SD-M 7 Cooperstown, NY (?) 1869</p>	  <p>SD-M 8 Canton, MS 1869</p>			
  <p>SD-M 8A Philadelphia, PA □ 1861-1868</p>				



Simple Designs - Miscellaneous



SD-M 8B
Philadelphia, PA 1861



SD-M 9
Aurora, NY 1869



SD-M 10
New Orleans, LA 1866



SD-M 8B



SD-M 10

Simple Designs - Miscellaneous



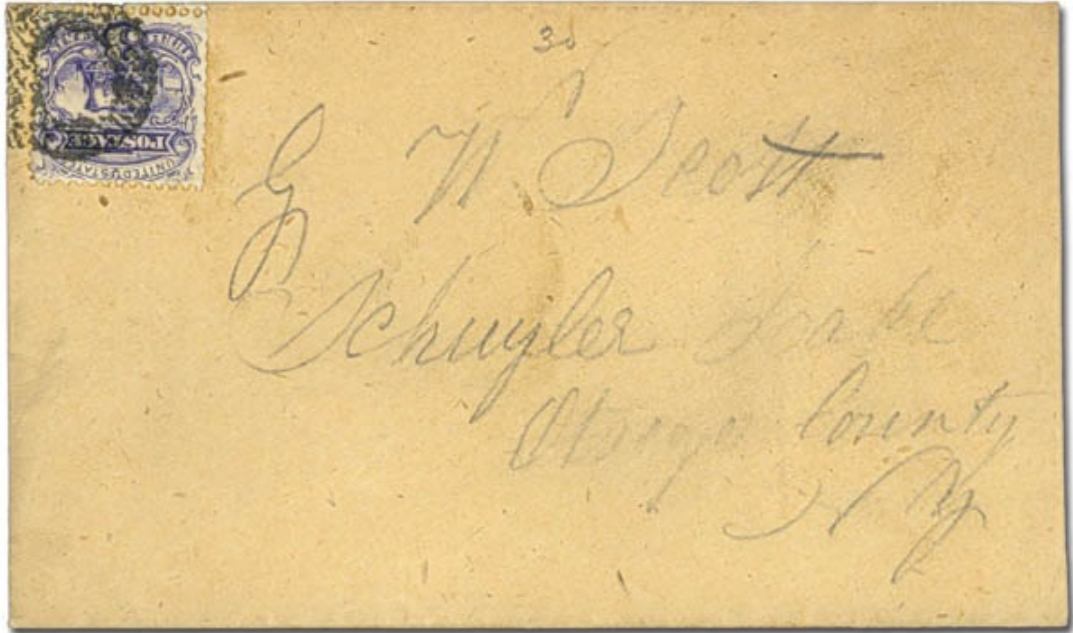
SD-M 11 [Skinner NYFM 6-5]
New York, NY 1861

Simple Designs - Miscellaneous



SD-M 12

Cooperstown, NY 8/27/1869



SD-M 12



SD-M 12



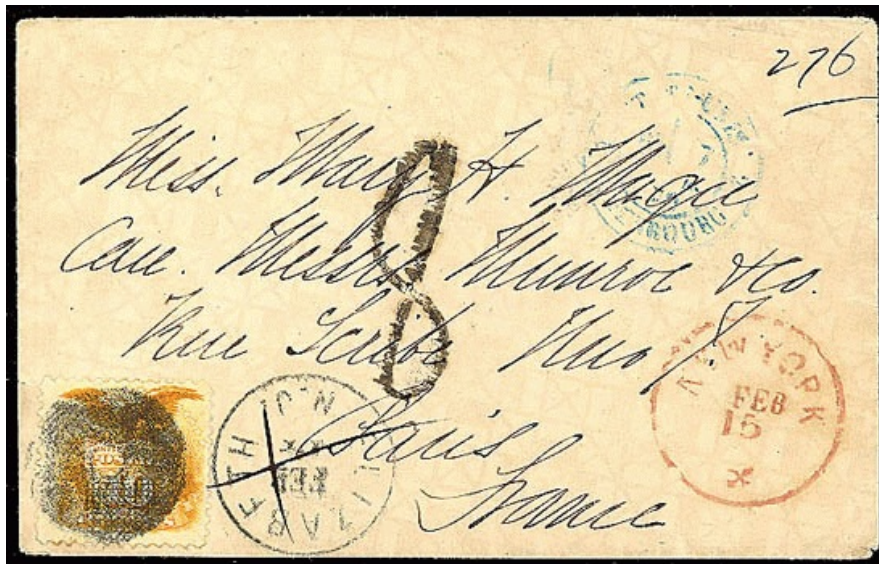
SD-M 12A

Elizabeth, NJ 2/14/1870



SD-M 12B

Detroit, MI 8/29/1869



SD-M 12A



SD-M 12B



SD-M 13 green, black
1869



SD-M 13A
1863



SD-M 14
New York, NY (?) 1861-1869

Simple Designs - Miscellaneous



"hat box"

SD-M 15
Pittsfield, MA 1861



"shield" or "shell" (?)

SD-M 16
Philadelphia, PA 1861



SD-M 16



Used by two towns

SD-M 17
Urbana, OH, and Boston, MA
1861, 1869



SD-M 17A
Albany, NY 1861-67



SD-M 17B
Syracuse, NY 1861



SD-M 17A



SD-M 17B



SD-M 17C
1869

Simple Designs - Miscellaneous



SD-M 18
Wilton, NH 1869



SD-M 18A
[Simpson pg129-25]
Canterbury, CT



SD-M 18

Simple Designs - Miscellaneous



SD-M 19
Adams Center, NY
4/22/1870



SD-M 20 blue
Philadelphia, PA 1869



SD-M 21
Trenton, NJ 1869



SD-M 22
1869



SD-M 23
Sedalia, MO 1869



Return to BRIMMER, WILLEN & CO.,
Dealers in Dry Goods, Clothing, Groceries, &c.,
ADAMS CENTRE, N. Y.,
if not delivered within 10 days.

SD-M 19



SD-M 19

Simple Designs - Miscellaneous



SD-M 24
Oxford, MA 1861



SD-M 24A
Boston, MA 1861



SD-M 25
1869



SD-M 26
1869



SD-M 24A



SD-M 24A



SD-M 24A

Simple Designs - Miscellaneous



SD-M 27
Old Point Comfort, VA 1861



SD-M 28
1869



SD-M 29
Helena, MT 1861



SD-M 30
New York, NY 1861



SD-M 27



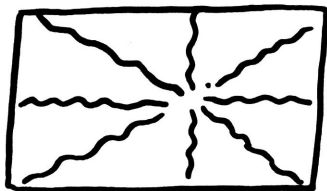
SD-M 31
Keene, NH 1869



SD-M 32
Ludlow, VT 1869



SD-M 33
1869



probably designed to cancel two stamps

SD-M 34 [Simpson pg129-23]
Stockton, Ca



SD-M 35 [Simpson pg131-44]
Scotland, CT 1857



SD-M 36 [Simpson pg131-52]
Cottage Hill, IL

Simple Designs - Miscellaneous



SD-M 35



updated November 15, 2022 (10:55am)