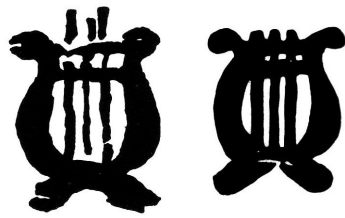


# Lyres and Harps



PO-Lh 1 [USCC 758; Simpson pg141-177]  
Canton, MS □ 9/27/1860-5/6/1861



PO-Lh 1



PO-HI 1



PO-Lh 1





PO-Lh 1



PO-Lh 1



PO-Lh 1

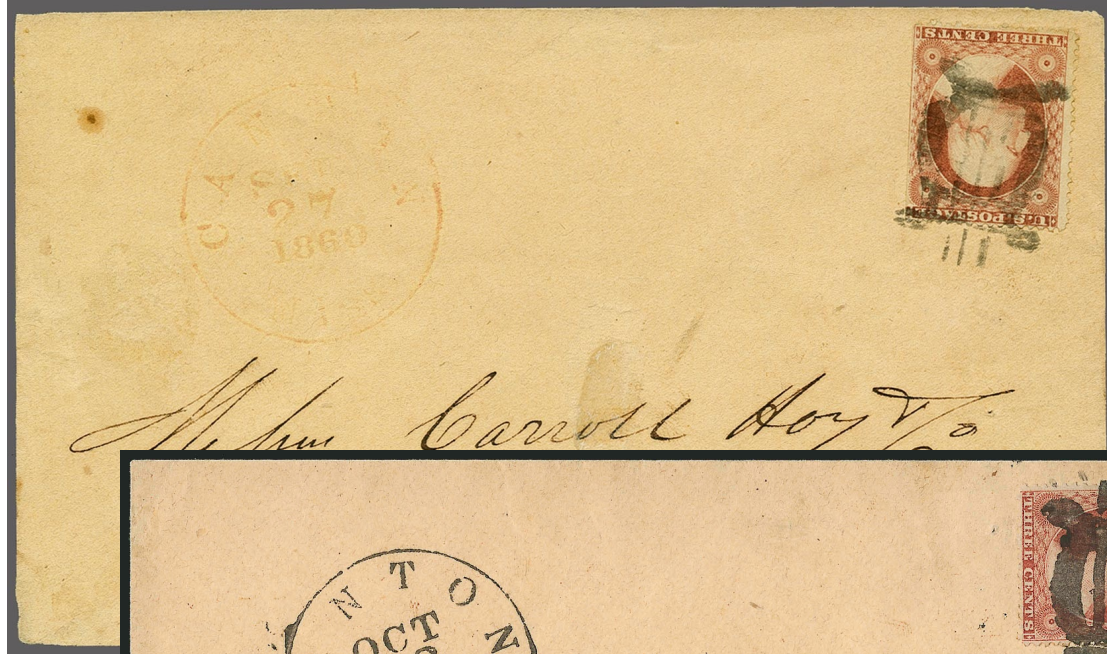


PO-Lh 1





PO-Lh1



PO-Lh1



PO-Lh1



PO-Lh1

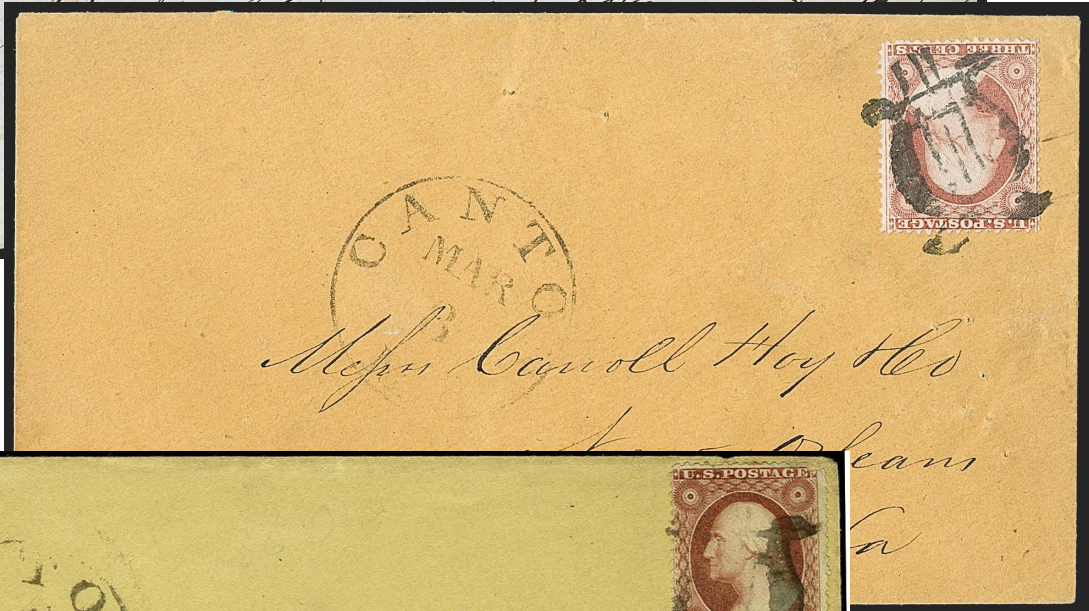




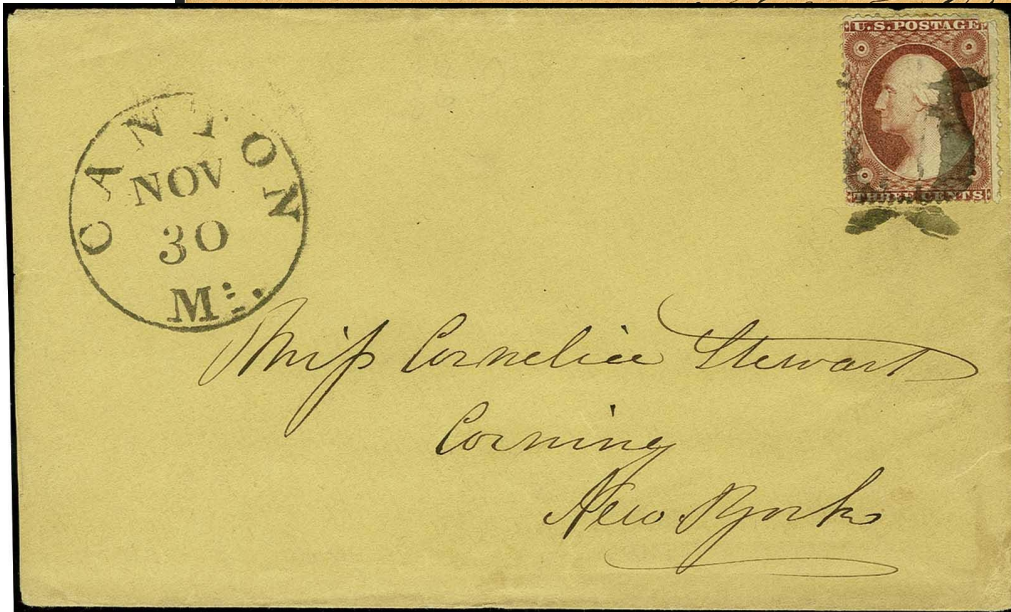
PO-Lh 1



PO-Lh 1



PO-Lh 1

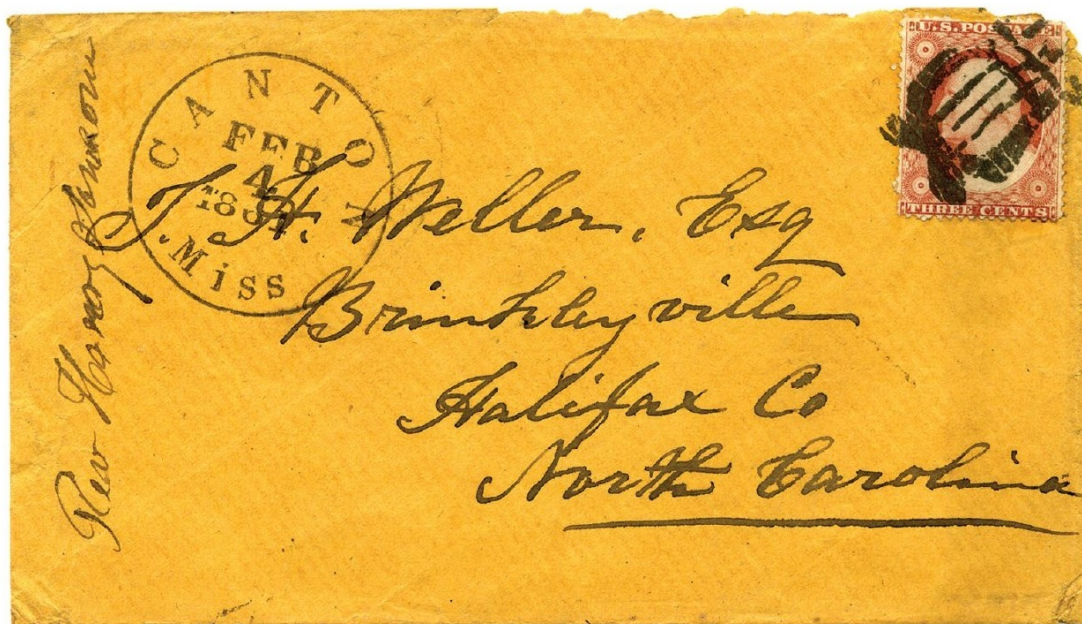


PO-Lh 1





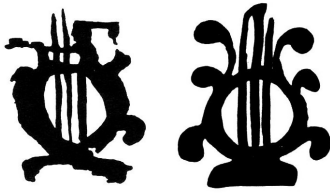
PO-Lh 1




PO-Lh 1



Lyres and Harps



PO-Lh 2 [USCC 756; Simpson pg141-176]  
Canton, MS  1857



PO-Lh 2



PO-Lh 2



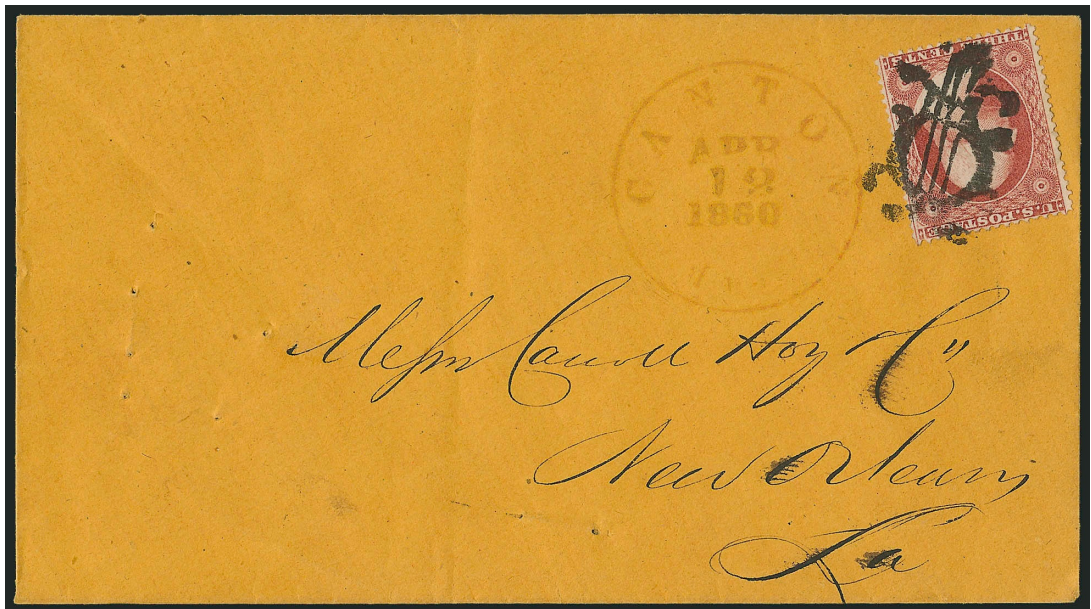
PO-Lh 2



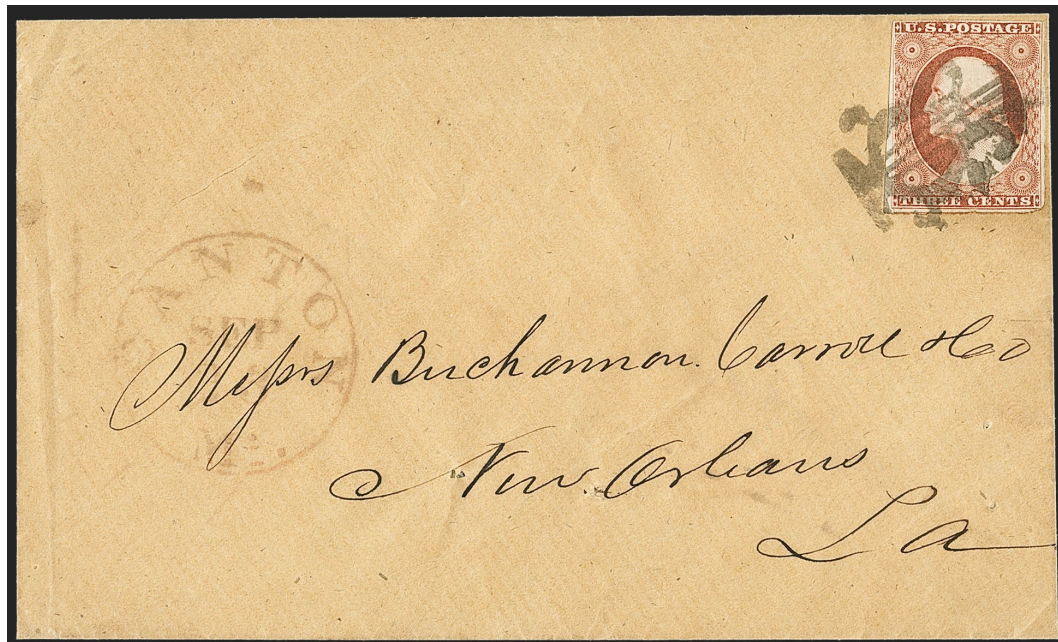
# Lyres and Harps



PO-Lh 3  
Canton, MS 4/12/1860



PO-Lh 3



PO-Lh 3



# Lyres and Harps



**PO-Lh 4**  
[Simpson pg141-169]  
Canton, MS 1857



lower portion faked?

**PO-Lh 5** green, black [USCC 757]  
St. Patrick, MO 1861



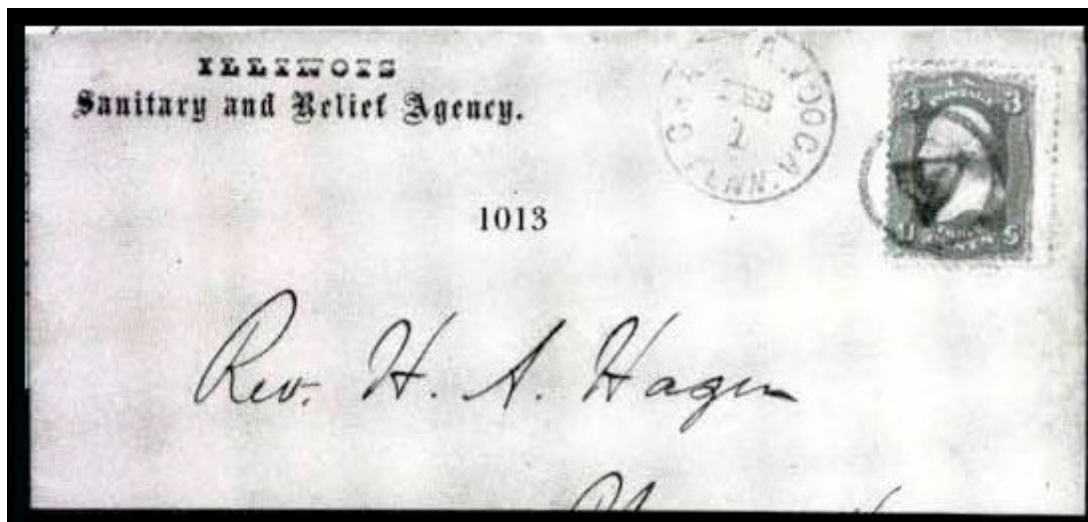
**PO-Lh 6** red  
1862



**PO-Lh 7**  
Chattanooga, TN 1861



**PO-Lh 8** BLUE  
1861



PO-Lh 7



updated May 25, 2022 (7:43am)