

Postal Markings - Railroad



PM-RR 1 red
Bridgeport, CT 1847



PM-RR 2 red
Bridgeport, CT 1847-50



PM-RR 2



PM-RR 2



PM-RR 2

Postal Markings - Railroad



PM-RR 3 red
Bridgeport, CT 1847-51

BALTIMORE.R.R.



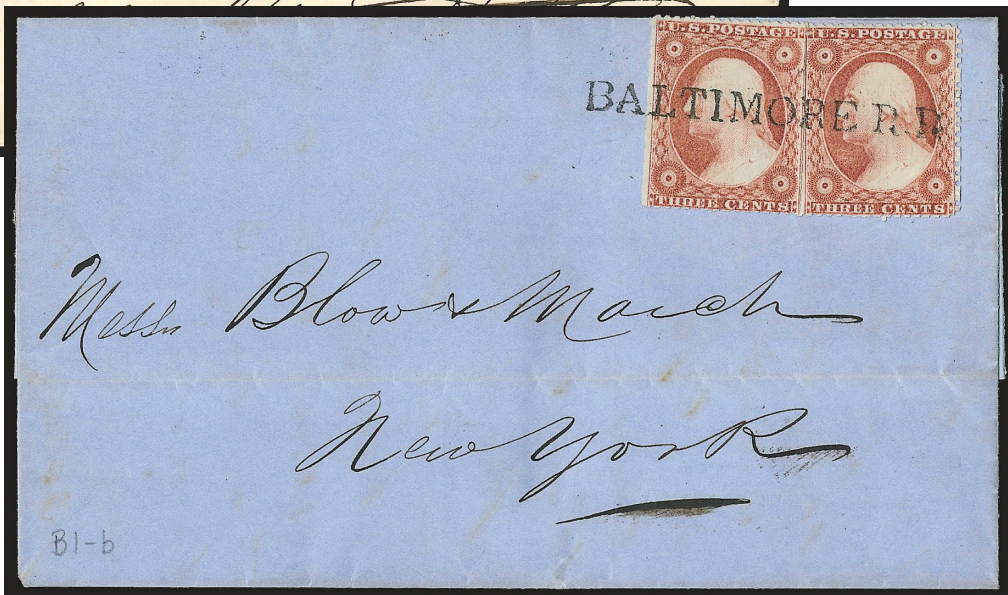
PM-RR 4 red, black
Baltimore R. R. □ 1847-61



PM-RR 4



PM-RR 4

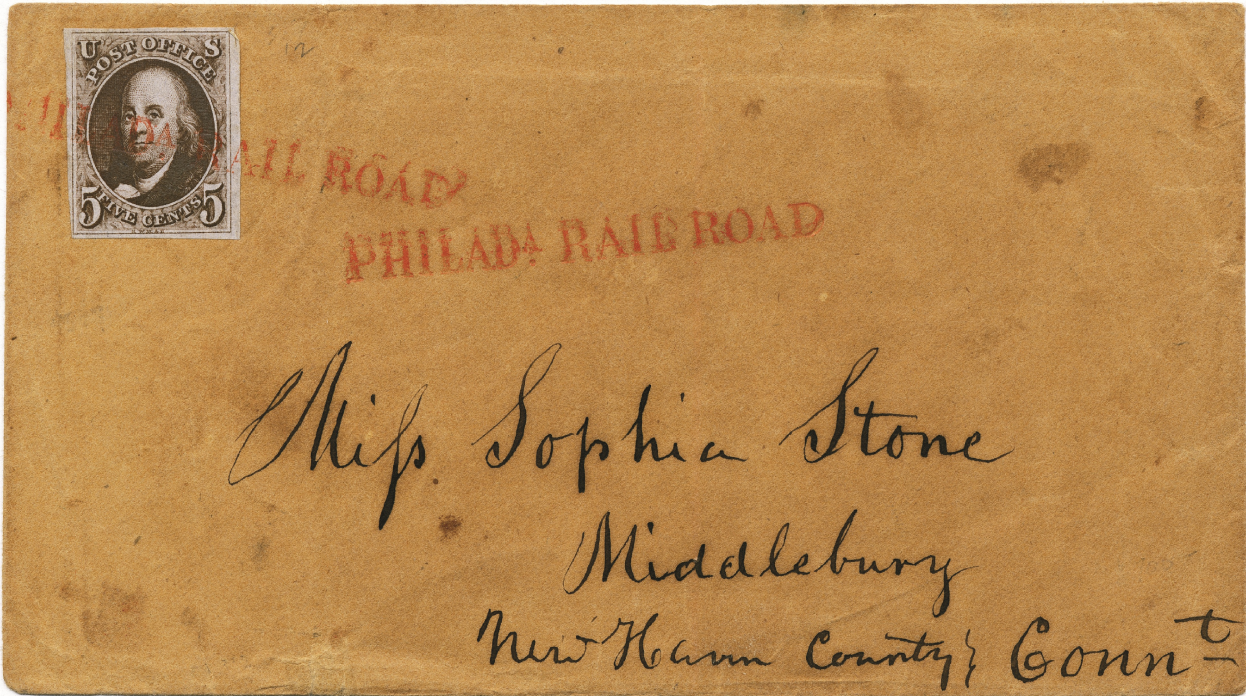


PM-RR 4

PHILADA RAIL ROAD



PM-RR 4A [Simpson pg183-294]
Philadelphia R. R. 1847



PM-RR 4A

Postal Markings - Railroad



There are four different handstamps included in this type depending "N. YORK" orientation (see note below)

PM-RR 5 red, black [USCC 6946 & 6947]

New York, NY \square 1847-61

note: diagonal of "N" of "N. YORK" points at center of "X" of "EXPRESS" (MPOS 73-B-1)

diagonal of "N" of "N. YORK" points at right end of "X" of "EXPRESS" (MPOS 73-B-2)

diagonal of "N" of "N. YORK" points at "P" of "EXPRESS" (MPOS 73-B-3)

diagonal of "N" of "N. YORK" points at space between "X" & "P" of "EXPRESS" (MPOS 73-B-4)



PM-RR 5

B. J. HOWLAND
OPEN CIRCULAR
NEW-YORK.

MISSENT TO
BOSTON, MASS.



Messrs J. Hutchins & Co
Providence

PM-RR 5

B. J. HOWLAND
OPEN CIRCULAR
NEW-YORK.

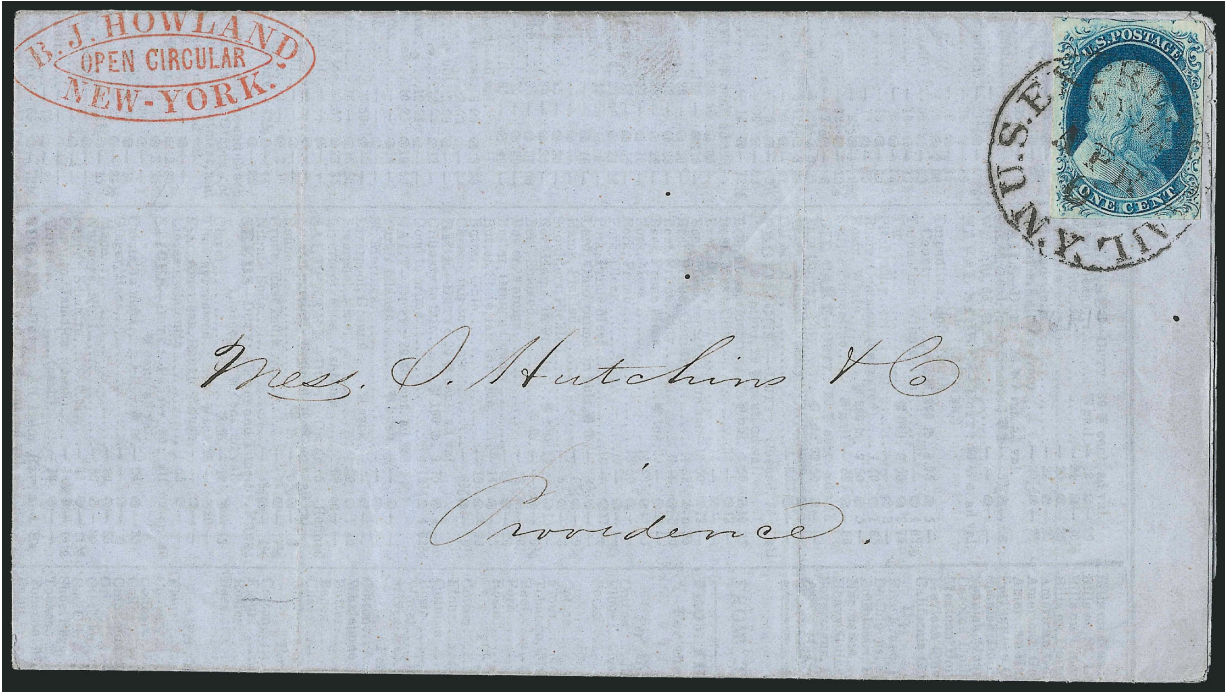


Messrs J. Hutchins & Co
Providence

PM-RR 5

Shubal Hutchins & Co
Providence
R. I.

PM-RR 5



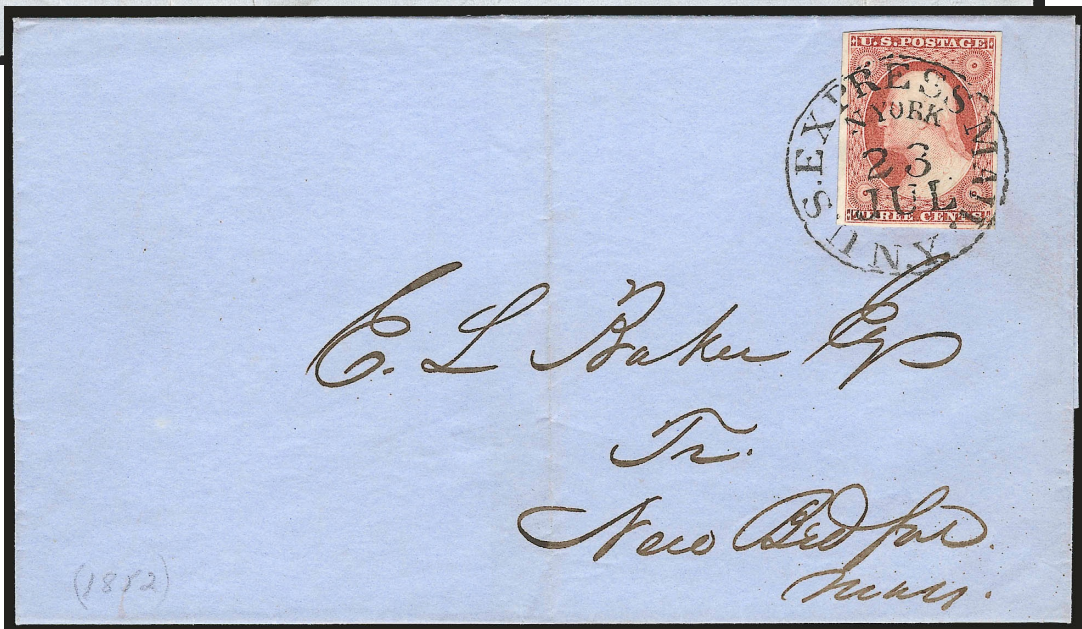
PM-RR 5



PM-RR 5



PM-RR 5



PM-RR 5

Postal Markings - Railroad



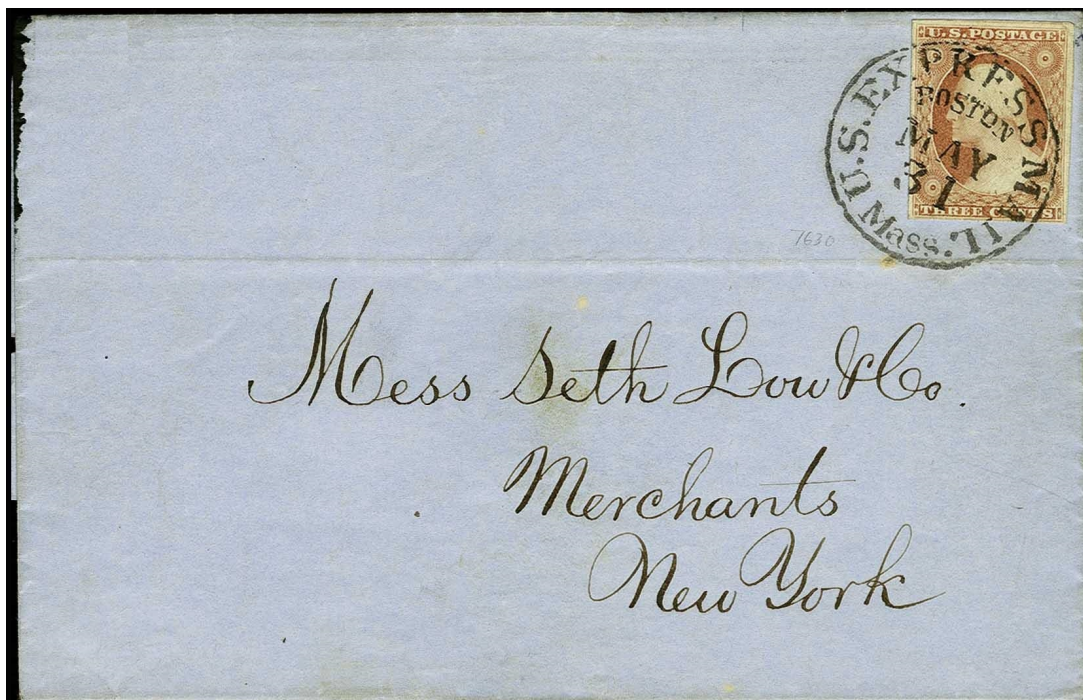
Postal Markings - Railroad



PM-RR 6 red, black [USCC 6949; Blake-Davis pg73-365 & 365A]
Boston, MA red 3/6/1843-10/13/1852; black 10/24/1851-4/15/1856



PM-RR 6



PM-RR 5

Postal Markings - Railroad



PM-RR 7 red, black
New York, NY 1847-4/30/1852-1857



PM-RR 8 blue
New Orleans, LA 1851-57



PM-RR 7



PM-RR 9
Chicago, IL 1857-61



PM-RR 10
Rutland, VT 1857-61

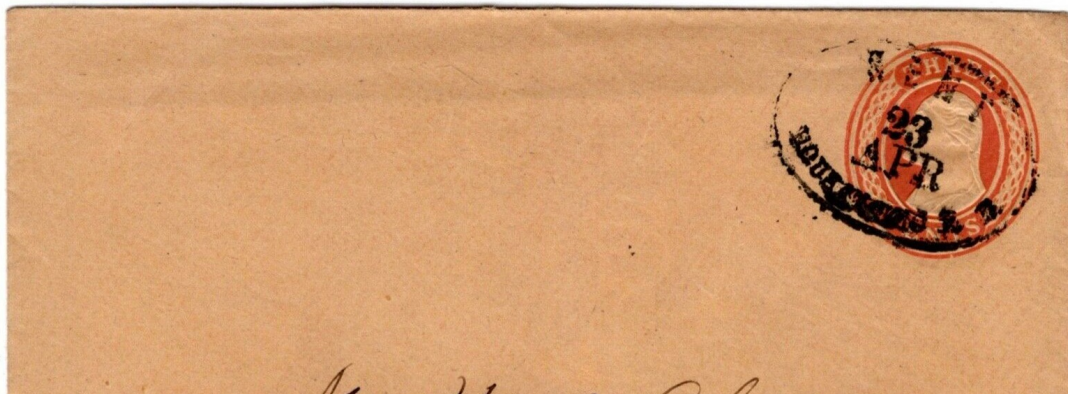
Postal Markings - Railroad



PM-RR 11 [Simpson pg195-31]
Kent, CT 1857-61

NEED SCAN

PM-RR 11A [Simpson pg195-32]
Kent, CT 1857-61



PM-RR 11A



PM-RR 11



PM-RR 11



PM-RR 11



PM-RR 12 [USCC 7136]
Mount Airy, MD 1857-61



PM-RR 13
Woodbine, MD 1861-65



PM-RR 14
Stevens, MD(?) 1867



PM-RR 15
Newport, PA(?) 1861



PM-RR 16 [USCC 7119]
Plymouth, MA(?) 1865

Postal Markings - Railroad



updated May 1, 2023 (3:42pm)