


Numerals - Simple

<p style="text-align: center; font-size: 48pt;">6</p> <p>NS-F 1 [USCC 6943] Morristown, NY <input type="checkbox"/> 1861</p>	<p style="text-align: center; font-size: 48pt;">6</p> <p>NS-F 1A [Simpson pg117-19] Salem, MA</p>	<p style="text-align: center; font-size: 48pt;">6</p> <p>NS-F 1B [Simpson pg117-17] Lowell, MA</p>	 <p>NS-F 1C Hingham, MA <input type="checkbox"/> 1/25/1864</p>	<p style="text-align: center; font-size: 48pt;">6</p> <p>NS-F 2 red 1867</p>
--	---	--	---	--



NS-F 1C

 <p>NS-F 3 1861</p>	 <p>NS-F 4 1867</p>	 <p>NS-F 4A [USCC 6437] 1869</p>	 <p>NS-F 5 1861</p>	 <p>NS-F 5A [USCC 6438; Simpson pg119-27] Manchester, NH 1851</p>
 <p>NS-F 6 1861</p>	 <p>NS-F 7 [USCC 6439] 1861</p>	 <p>ship rate NS-G 1 1847</p>	 <p>NS-G 2 1869</p>	 <p>"7" in grid SD-G 101 1861</p>
 <p>NS-H 1 1861</p>	 <p>NS-H 2 1869</p>	 <p>NS-H 3 Frankfort, KY <input type="checkbox"/> 4/25/1870</p>		

Numerals - Simple



NS-H 3

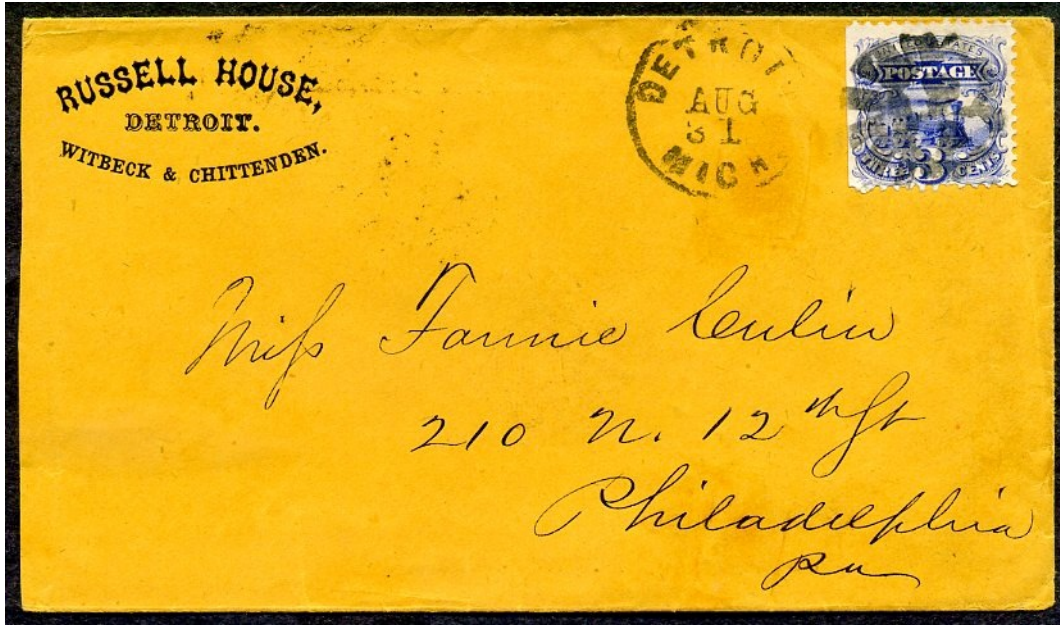
8



NS-H 3A
Albany, NY(?) 1869



NS-H 4
Detroit, MI 8/31/1869



NS-H 4

Numerals - Simple



NS-H 4A [Blake/Davis 1025] late usage
Boston, MA 1861



20mm diameter



late usage

NS-H 5 late usage
Philadelphia, PA EKU 2/1/1880; LKU 8/26/1880



NS-I 1
Chicago, IL 1861



updated December 27, 2022 (5:58pm)