

Letters - Simple

O



LS-O 1 blue, black
1861

O

LS-O 1A blue
South Deerfield, MA 6/4/1868



LS-O 1A

Letters - Simple



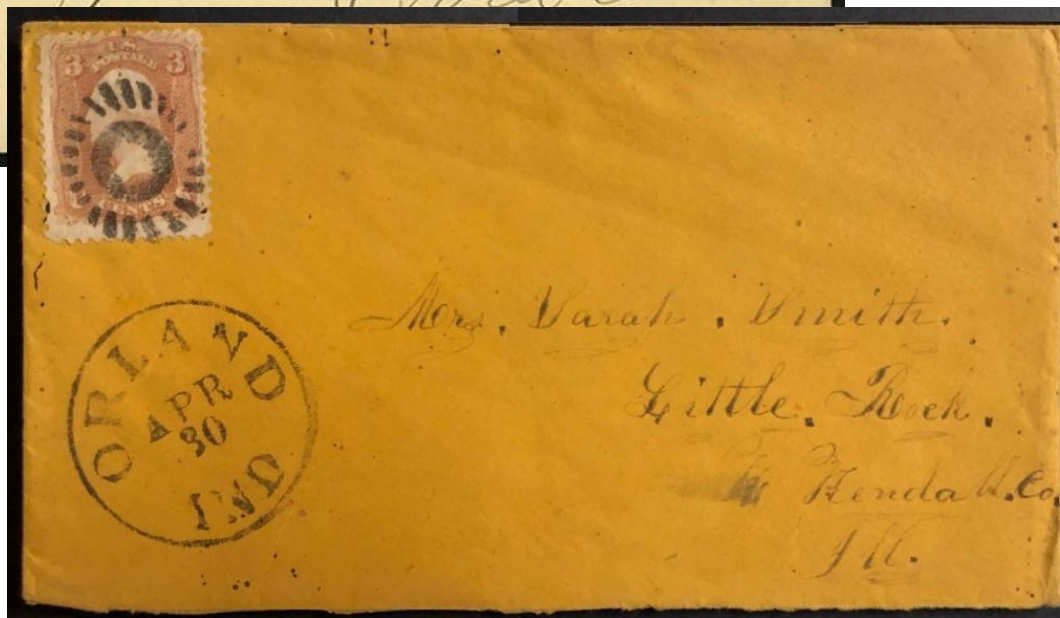
LS-O 2 [USCC3837]
Orland, IN 1861-1867



LS-O2



LS-O2



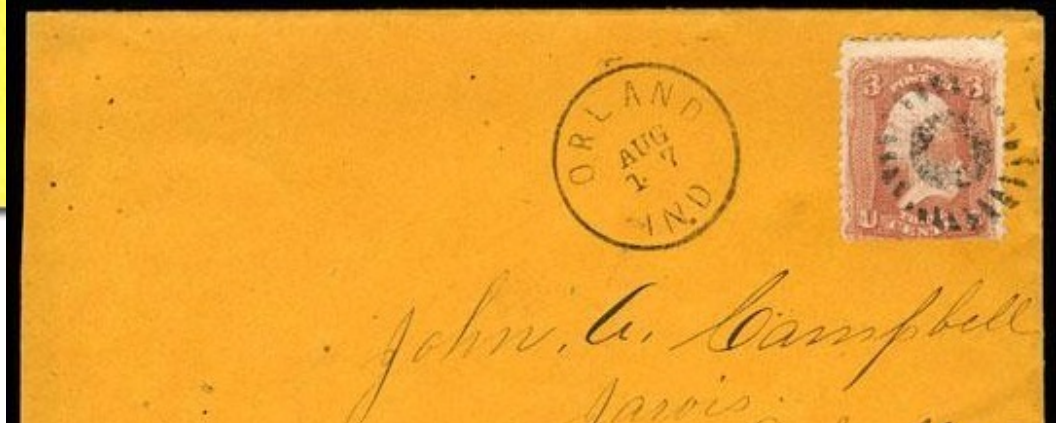
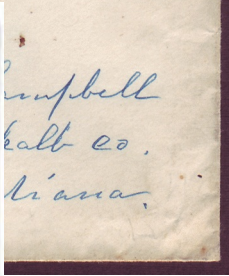
LS-O2



LS-02



LS-02



LS-02



LS-02

Letters - Simple



LS-O 2A
1861



LS-O 2B
1861



LS-O 2C
Galva, IL 11/26/1869



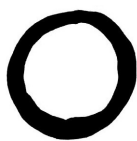
LS-O 3
1869



LS-O 3A
1861



LS-O 2C



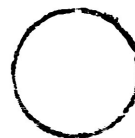
LS-O 4 [Simpson pg143-212]
Tinton Falls [DPO 1843-1907], NJ 1861



LS-O 4A
Boscawen, NH 1861

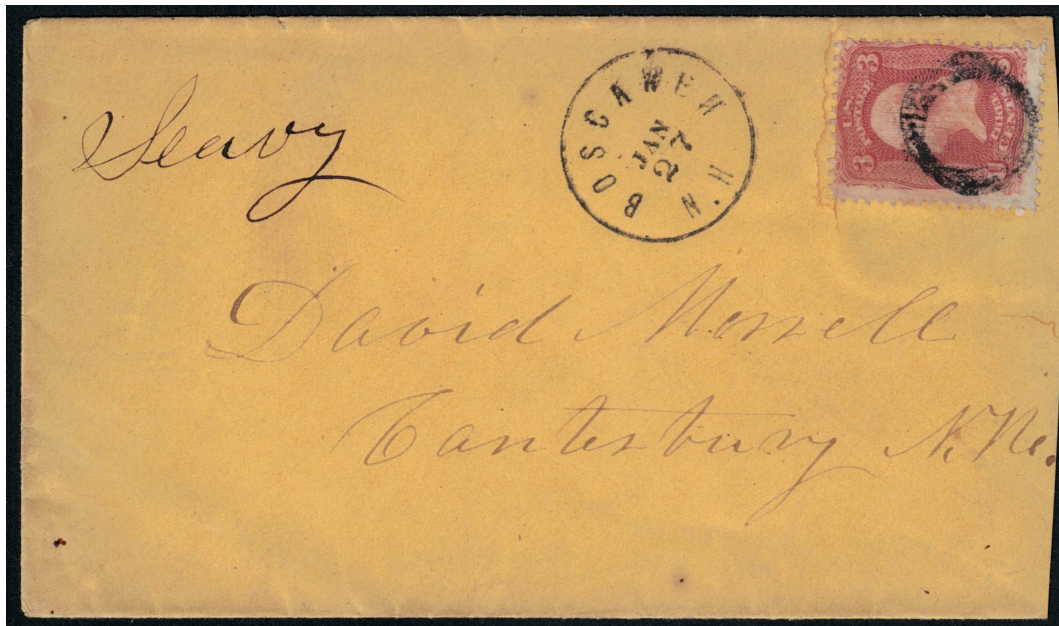


LS-O 4B
1861



18mm diameter

LS-O 5
Chatham 4 Corners, NY
1869



LS-O 4A



20mm diameter?

LS-O 5A
1861



LS-O 5B
1857



LS-O 5C blue
Springfield, OH 1857



LS-O 5C



LS-O 5C

Letters - Simple



LS-O 6
1857



LS-O 7
Oswego, NY [] 1861



LS-O 8 [USCC 6016]
1861

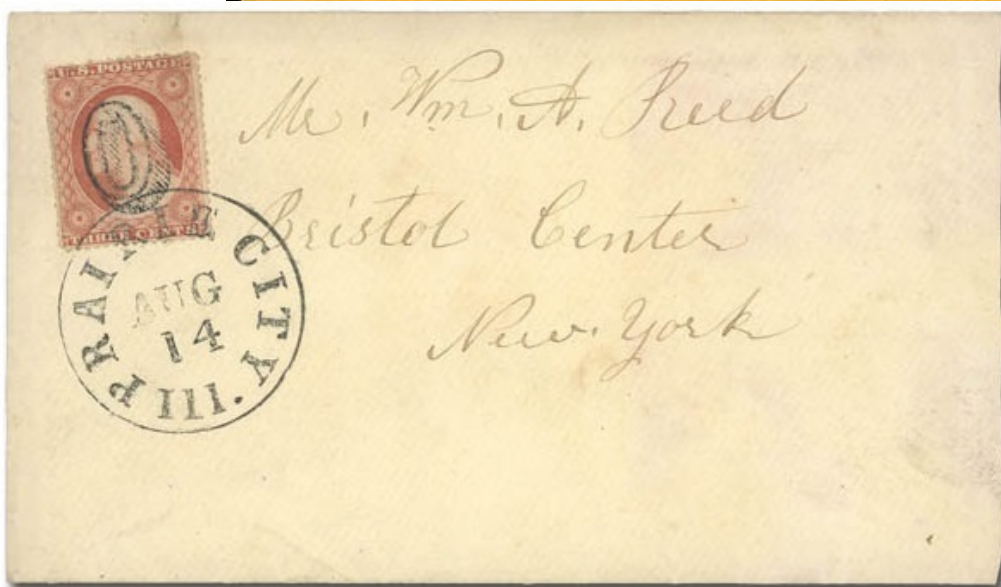


Fake ?

LS-O 8A
Prairie City, IL [] 1857



LS-O 7



LS-O 8A



LS-O 9
Zanesville, OH [] 5/29/1865



updated August 13, 2022 (11:36am)