

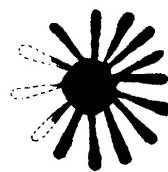
Geometrics - Radial



GE-R 1
Vinton, IA 1857



GE-R 1A
1867



GE-R 1B
1861



GE-R 1C [Simpson pg129-19]
North Branch, Ca



GE-R 2 [Simpson pg135-67]
Davenport, IA 3/25/1861-12/31/1861



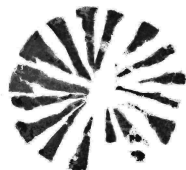
GE-R 2



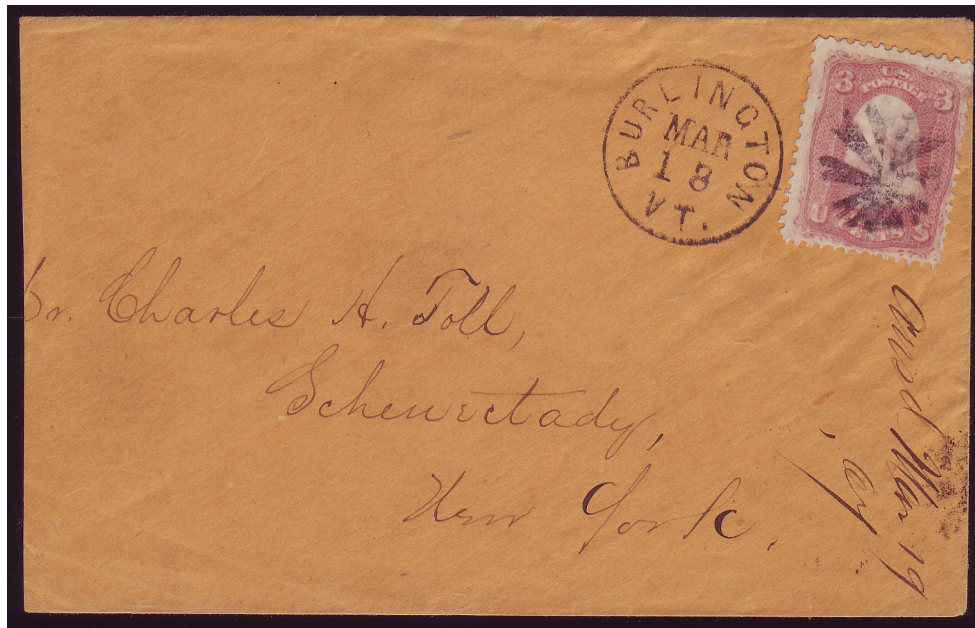
GE-R 2A
1861



GE-R 2B
Burlington, VT 1861



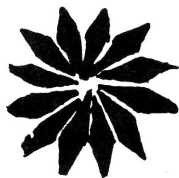
GE-R 2C
Leicester, MA 1857



GE-R2B

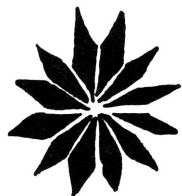


GE-R2C



Twelve petals

GE-R 3 [Rohloff P-30]
 Waterbury, CT 6/4/869-
 6/2/1870



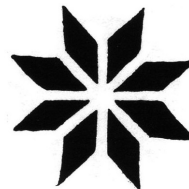
Twelve petals

GE-R 4
 Waterbury, CT 1869



Twelve pedals

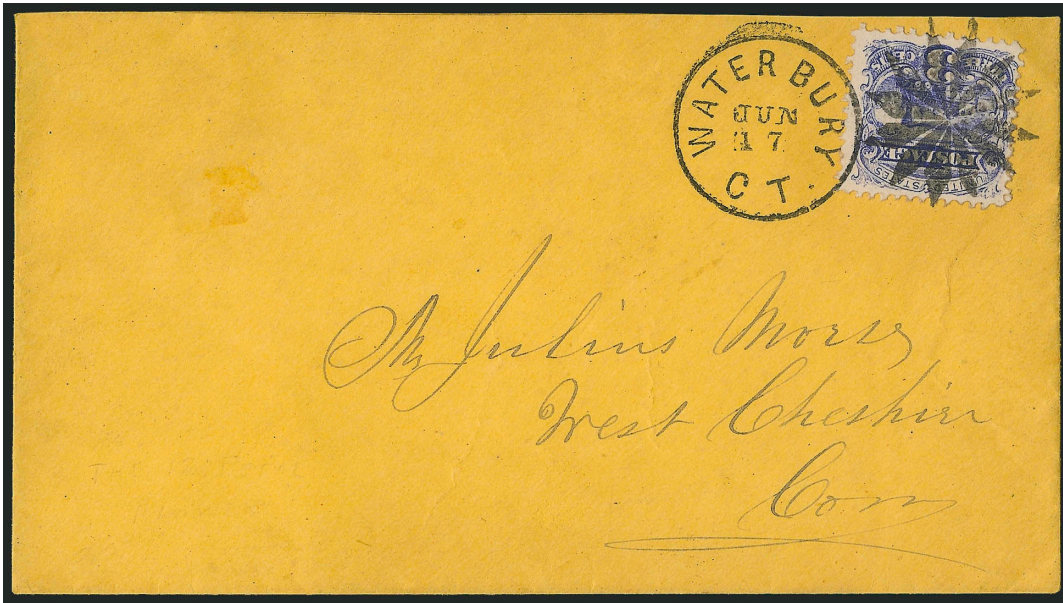
GE-R 4A [Rohloff P-31]
 Waterbury, CT 6/14/1867-
 6/17/1867



GE-R 4B [USCC 3674]
 Utica, NY 6/19/1868(?)



GER 3



GER 3



GER 4B

Geometrics - Radial



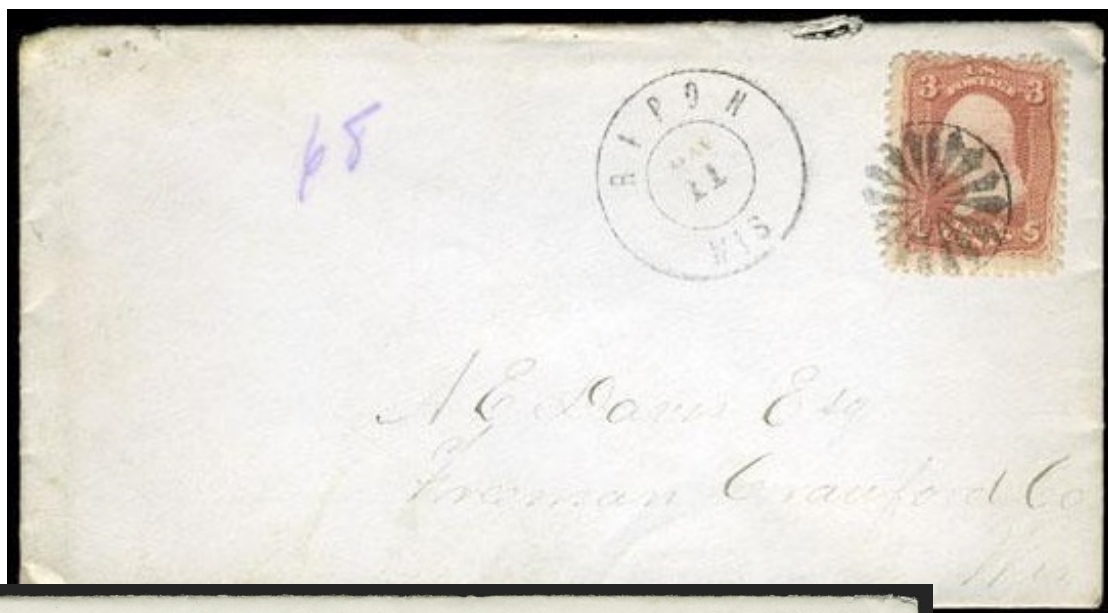
Sixteen petals



Sixteen petals



GE-R 5 [USCC 3786]
Ripon, WI 1861-6/8/1869



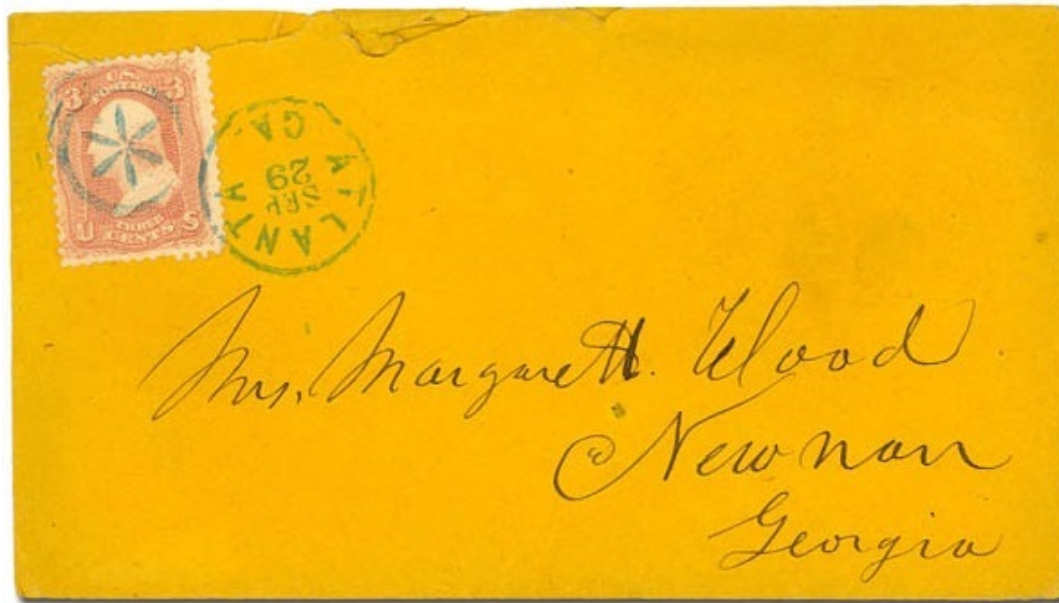
GE-R 5



GE-R 5a

Geometrics - Radial

 <p>Sixteen petals</p>	 <p>GE-R 7 Irwin Station, PA 1861, 1868</p>				
 <p>GE-R 8 1861</p>	 <p>Six petals</p> <p>GE-R 9 Saugerties, NY 1861</p>	 <p>Six petals</p> <p>GE-R 9a Saugerties, NY(?) 1861</p>	 <p>GE-R 9B [USCC 3503] Portage Des Sioux, ME 1861</p>	 <p>GE-R 9C [USCC 3504] 1861</p>	
 <p>Six petals</p> <p>GE-R 9D [USCC 3498] 1861</p>	 <p>Six petals</p> <p>GE-R 11 blue [USCC 3501] Atlanta, GA 1861</p> 		 <p>Six petals</p> <p>GE-R 11A [USCC 3500] 1861</p>	 <p>Six petals</p> <p>GE-R 12 The Rock, GA 1861</p>	



GE-R 11

Geometrics - Radial



Six petals



GE-R 13
1861

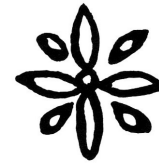


19mm diameter, five
petals

GE-C 199
South Framingham, MA 1861



GE-R 14
1861



GE-R 15
Griffin, GA 1861



GE-R 16
New York, NY 1861

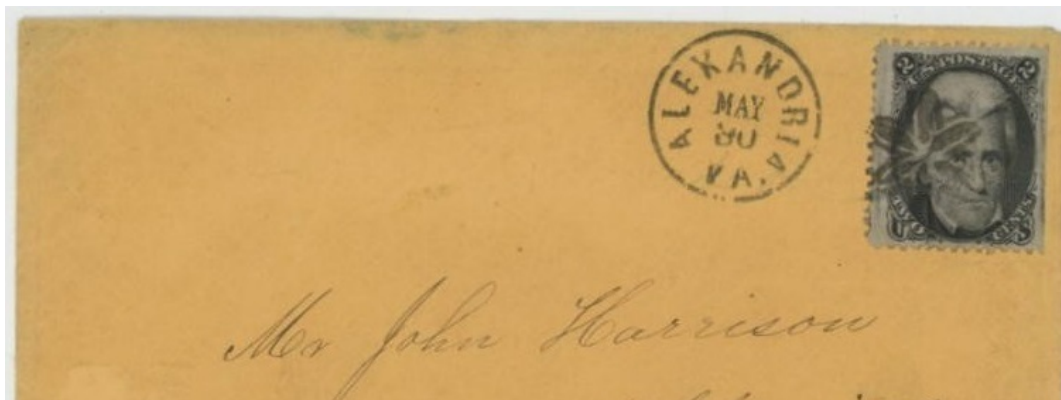
Geometrics - Radial



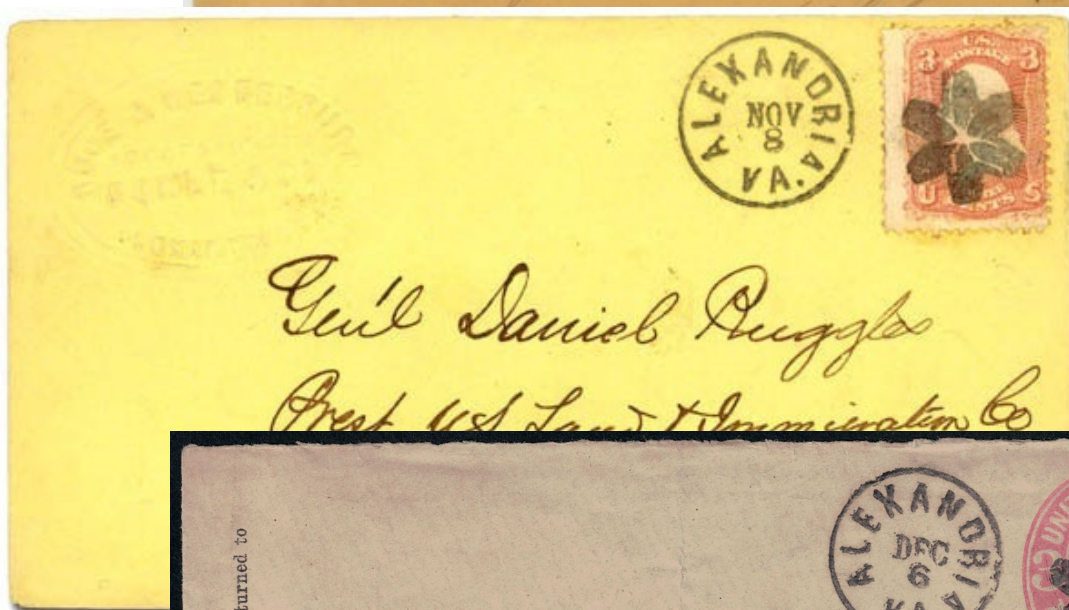
worn device



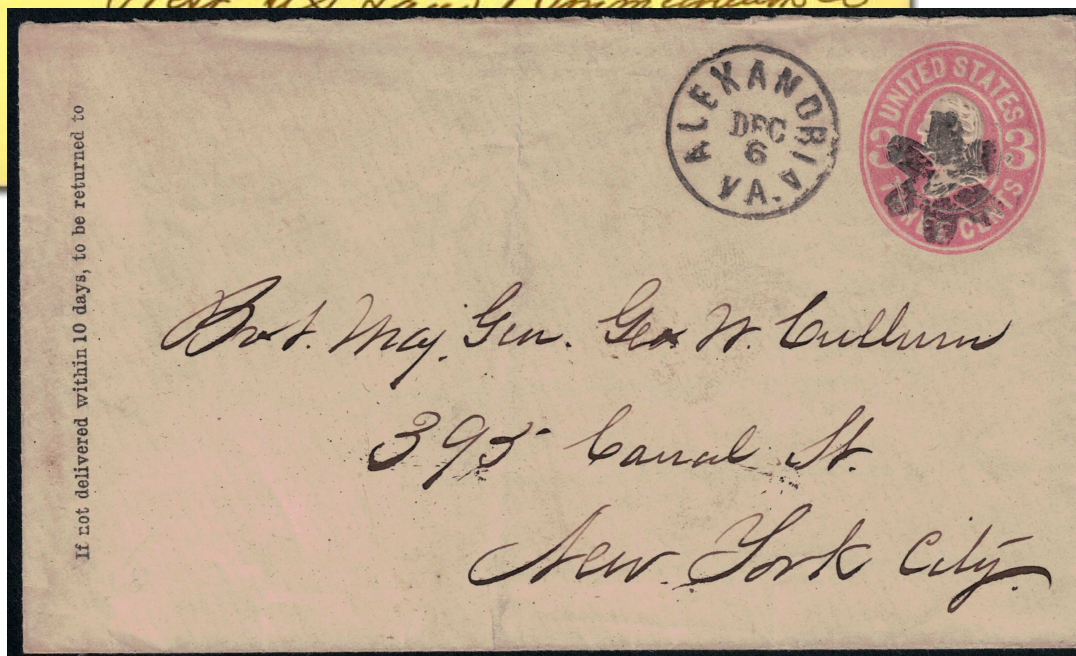
GE-R 17 [USCC 3490 & 3491]
Alexandria, VA 1861



GER-17



GER-17



GER-17



GE-R 17



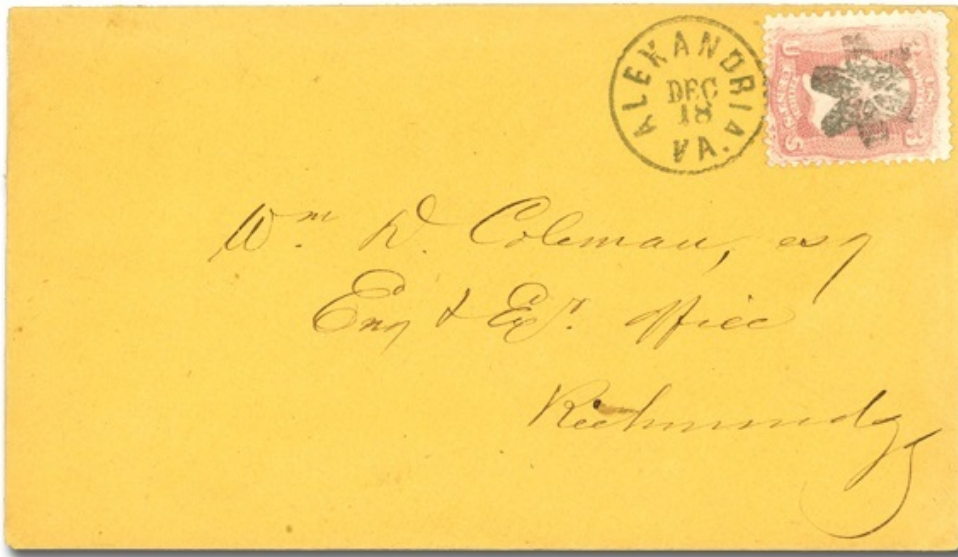
GE-R 17



GE-R 17



GE-R 17



GER 17

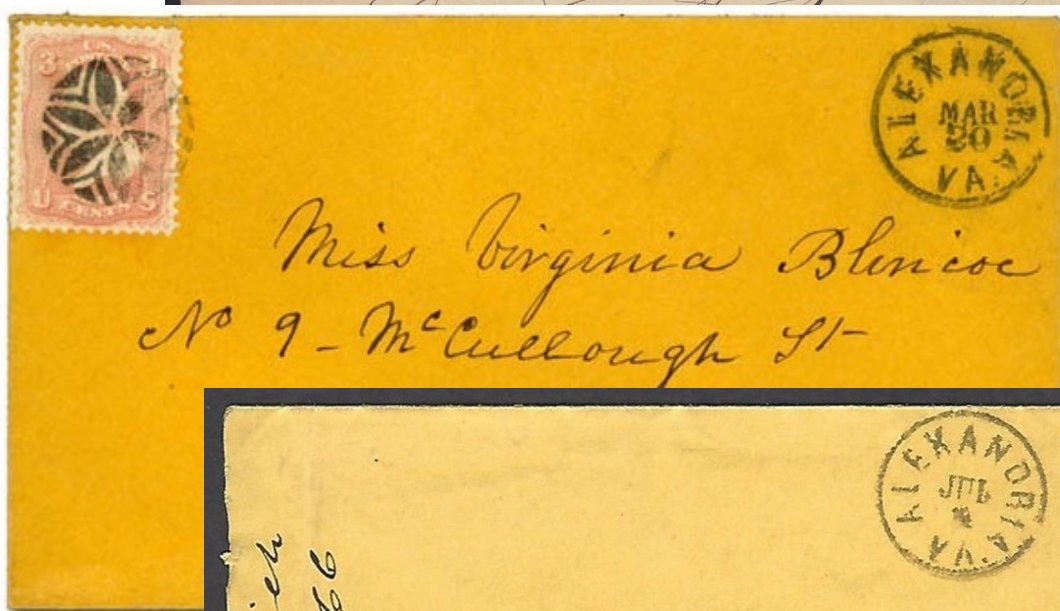
Geometrics - Radial



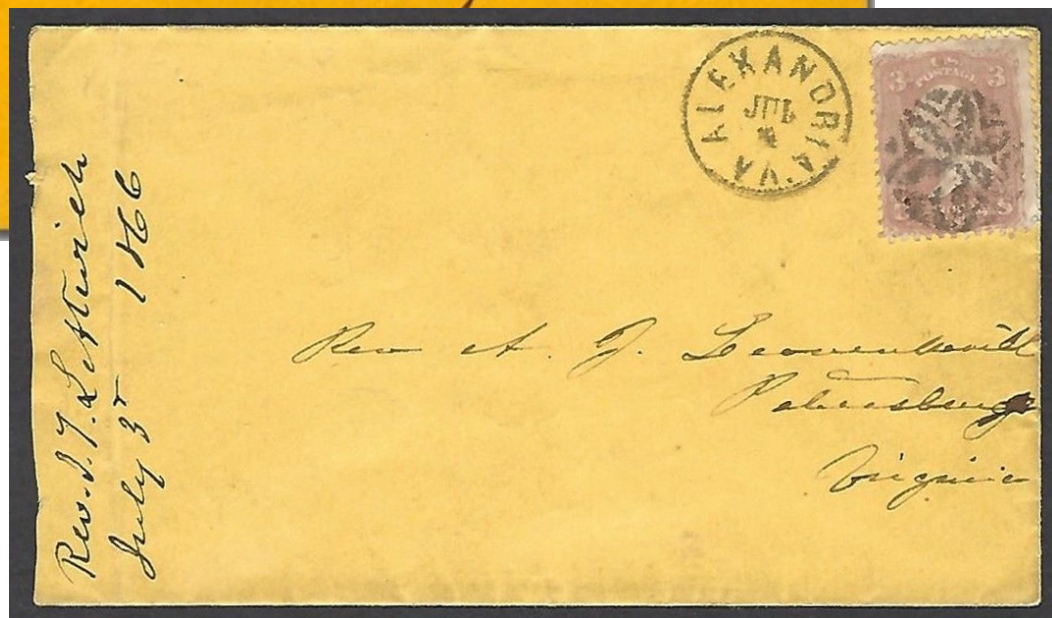
GE-R 18 [USCC 3492]
Alexandria, VA 7/4/1866-8/16/1866



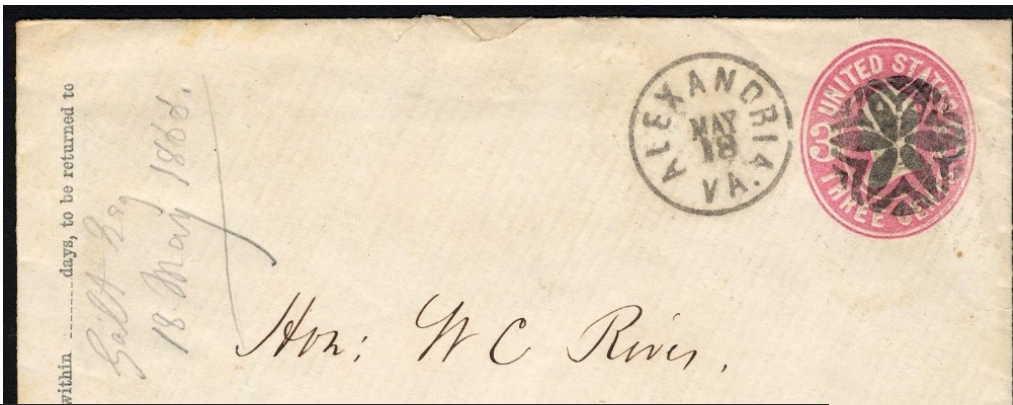
GE-R 18



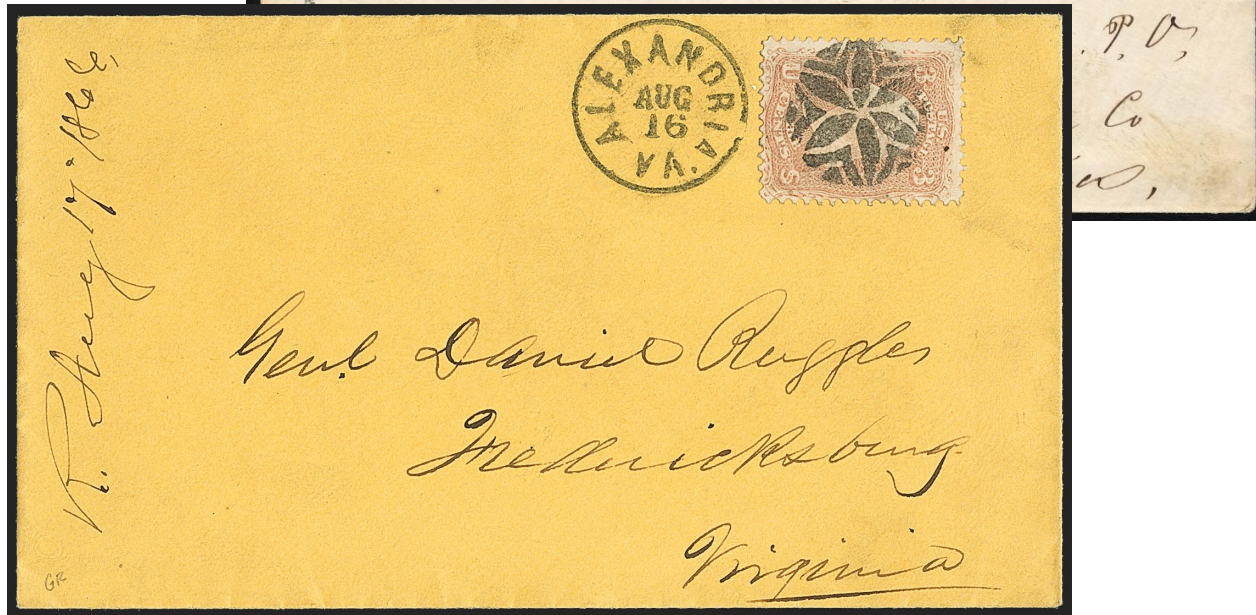
GE-R 18



GE-R 18



GER 18



GER 18



Geometrics - Radial



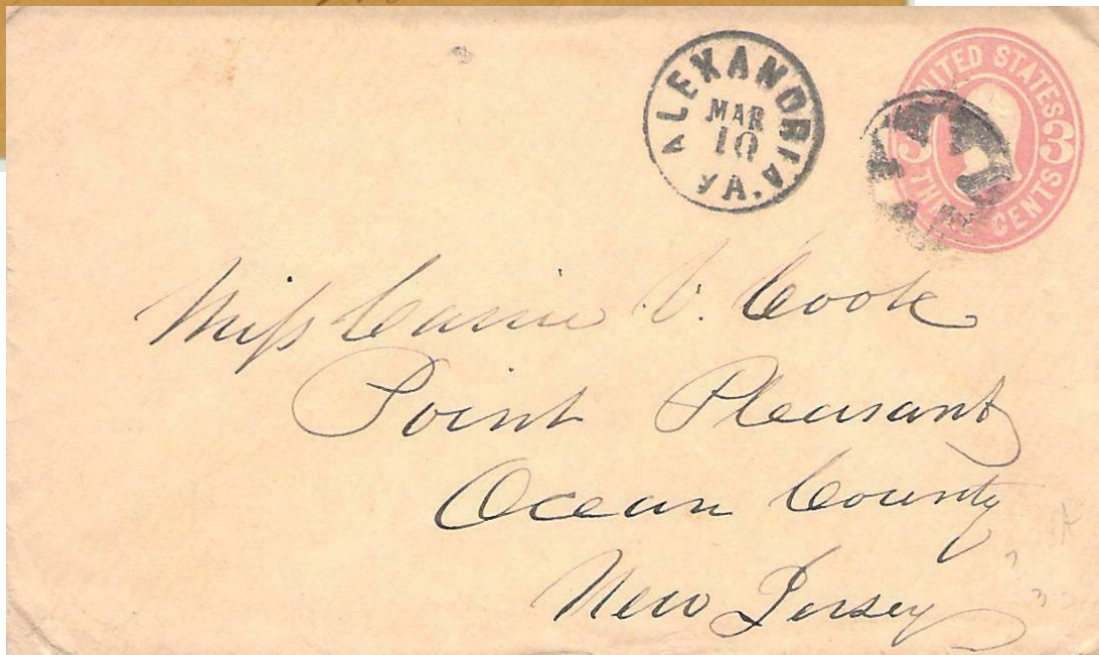
GE-R 20 [USCC 3487]
Alexandria, VA 1861, 1869



GE-R 20



GE-R 20



GE-R 20



GER 20

Geometrics - Radial



GE-R 20A
Albany, NY 1861



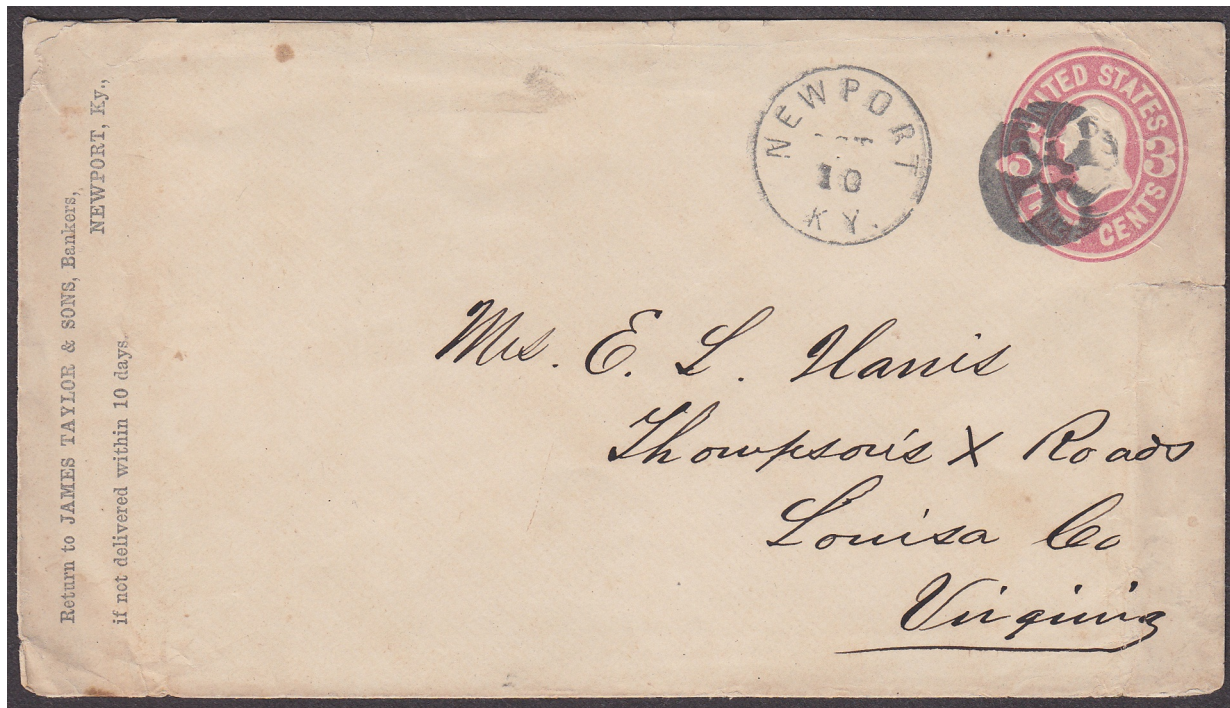
GE-R 21
Newport, KY 1861



19mm diameter
GE-R 21A
Newport, KY 1864



GE-R 22
Geneva, WI 1861



GE-R 21A



GE-R 22

Geometrics - Radial



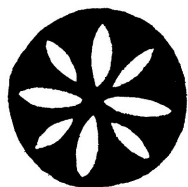


GE-R 23



GE-R 23

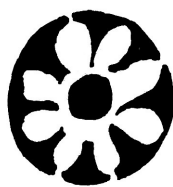
Geometrics - Radial



GE-R 24
New York, NY 1861



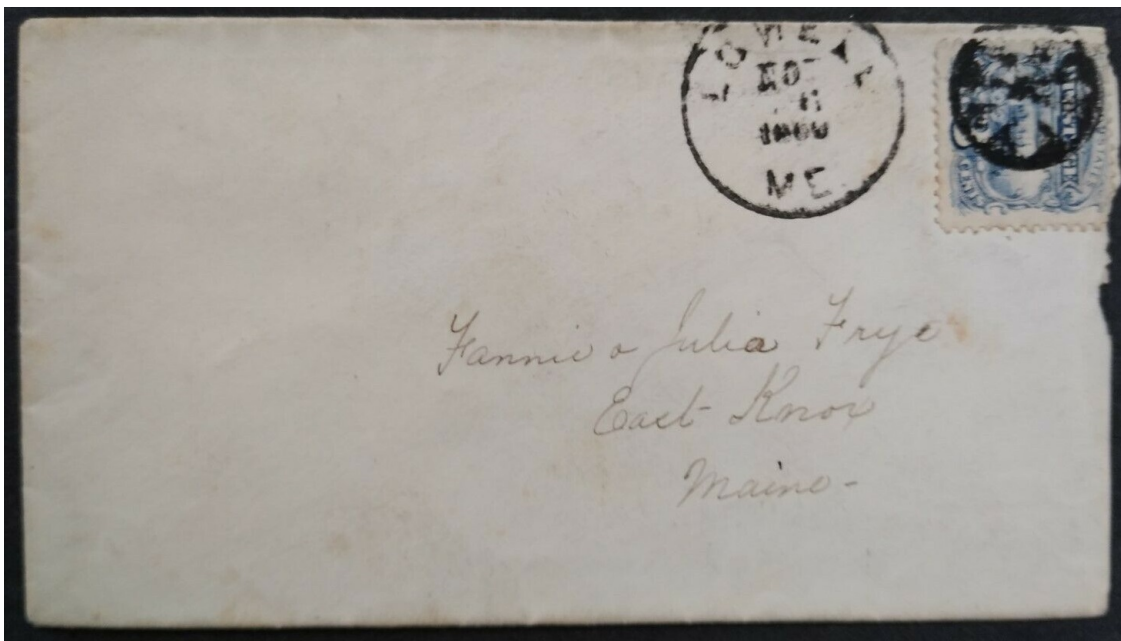
GE-R 25
Cannelton, IN 1869



GE-R 26
1861



GE-R 26A
Lowell, MA 11/26/1869



GE-R 26A



GE-R 27 [USCC 3485]
Athens, GA 1861



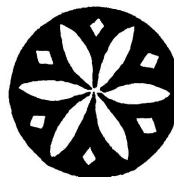
GE-R 28
New York, NY 1861



GE-R 28A
1861



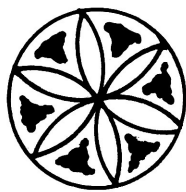
GE-R 29 blue, black
1869




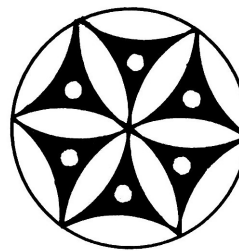
GE-R 30 [USCC 3489]
New York, NY 8/20/1867




Geometrics - Radial



GE-R 31 blue [USCC 3497]
Montpelier, VT  6/29/1865



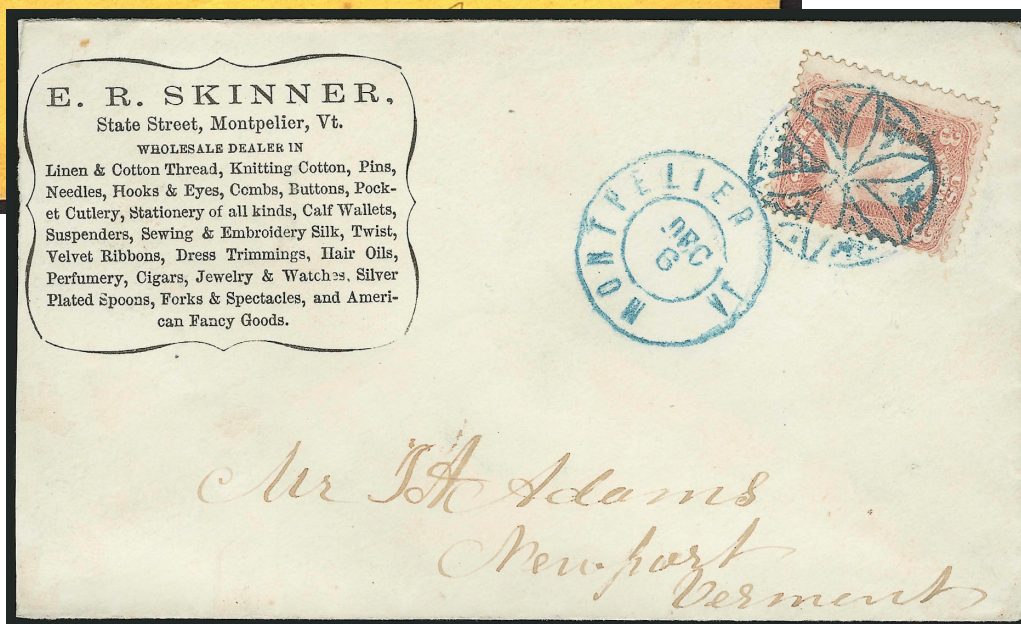
GE-R 32
Bangor, WI  1861



GE-R 31



GE-R 31



GE-R 31

E. R. SKINNER.

State Street, Montpelier, Vt.

WHOLESALE DEALER IN


Linen & Cotton Thread, Knitting Cotton, Pins,
Needles, Hooks & Eyes, Combs, Buttons, Pock-
et Cutlery, Stationery of all kinds, Calf Wallets,
Suspenders, Sewing & Embroidery Silk, Twist,
Velvet Ribbons, Dress Trimmings, Hair Oils,
Perfumery, Cigars, Jewelry & Watches. Silver
Plated Spoons, Forks & Spectacles, and Ameri-
can Fancy Goods.

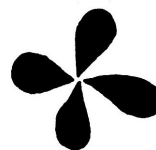
Geometrics - Radial



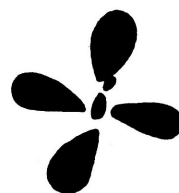
GE-R32A
1861




see ST-S 27
GE-R 33
Brooklyn, NY  1861



GE-R 34
1861



GE-R 35 blue
Chicago, IL  1861

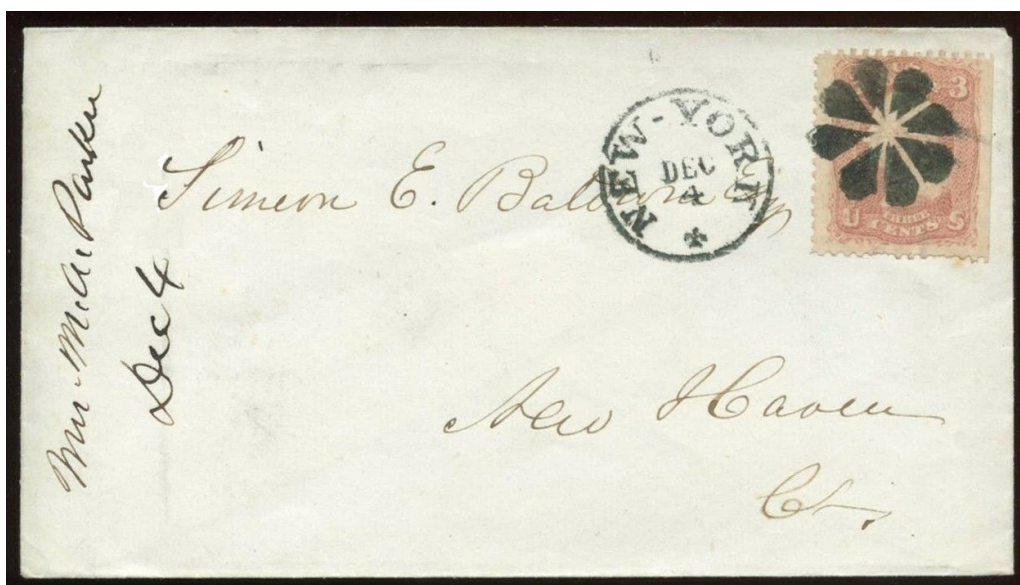


GE-R 35

Geometrics - Radial



GE-R 36 [USCC 3712] multiple similar devices used?
New York, NY 1861, 1868



GE-R 36



GE-R 36B
1861



GE-R 36C
1861



GE-P R 36D
1867

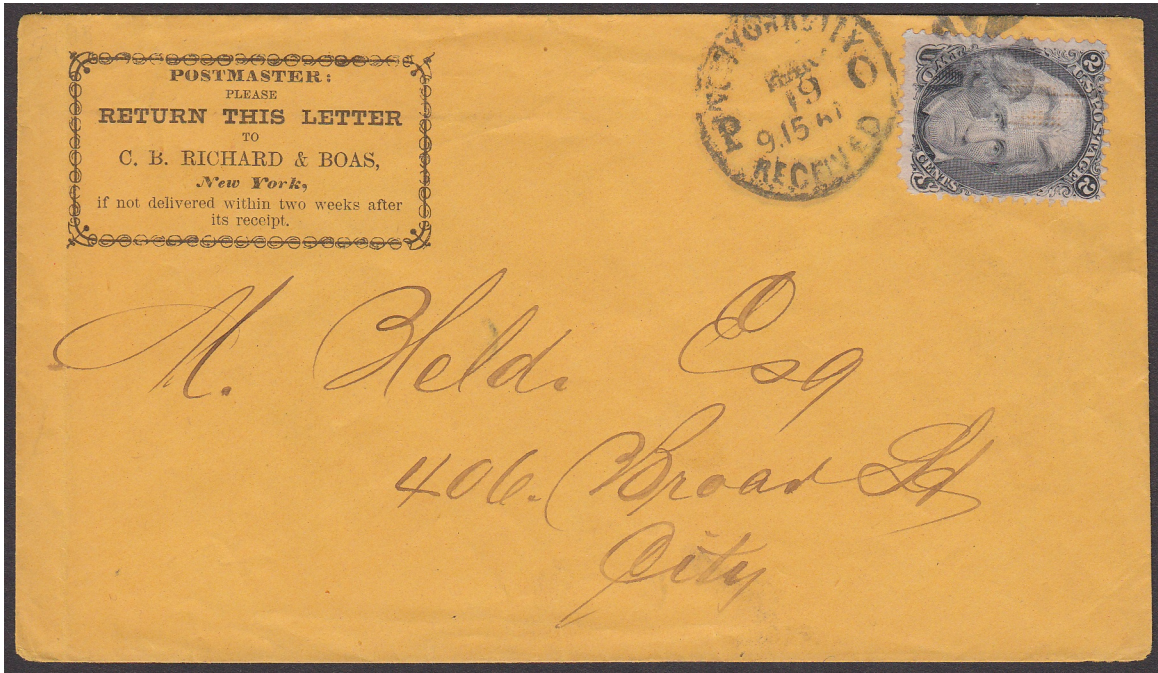
Geometrics - Radial



GE-R 36E
New York, NY 1868



GE-R 37
Dartford, WI 1861



GE-R 36F

Geometrics - Radial



Baltimore Foreign Mail marking

GE-R 37A orange red
Baltimore, MD 12/20/1969



GE-R 37A

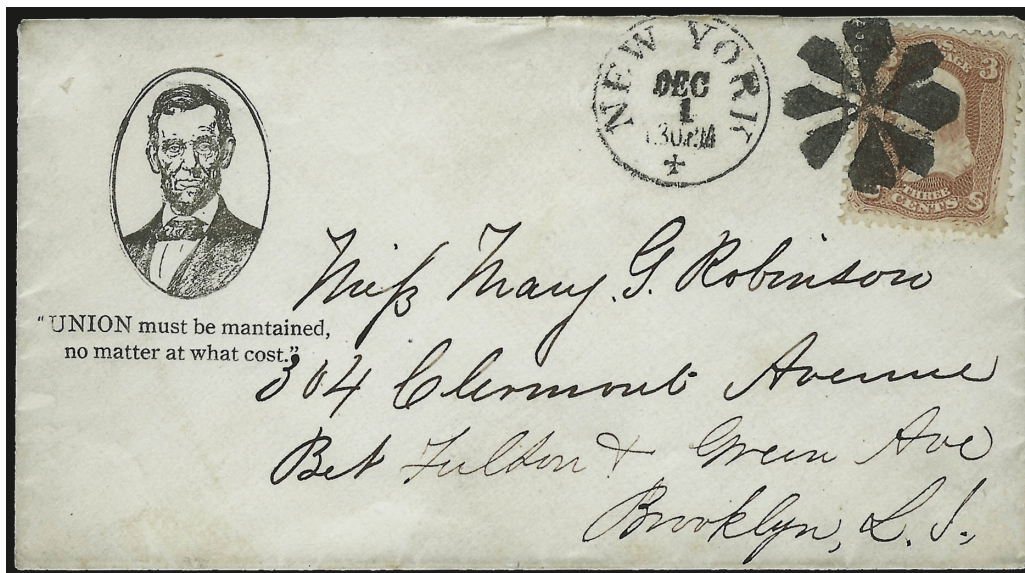


GE-R 37A

Geometrics - Radial



GE-R 38
New York, NY 1869



GE-R 38



GE-R 38A [Simpson pg143-206; USCC 3713]
Freehold, NJ 1857



Compare with PP-FI 26

GE-R 39
Hartford, CT 1861

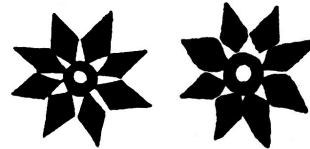


GE-R 39

Geometrics - Radial



GE-R 40 [Rohloff J-11]
Waterbury, CT 8/20/1867-9/14/1867



worn device

GE-R 41
New York, NY 1861



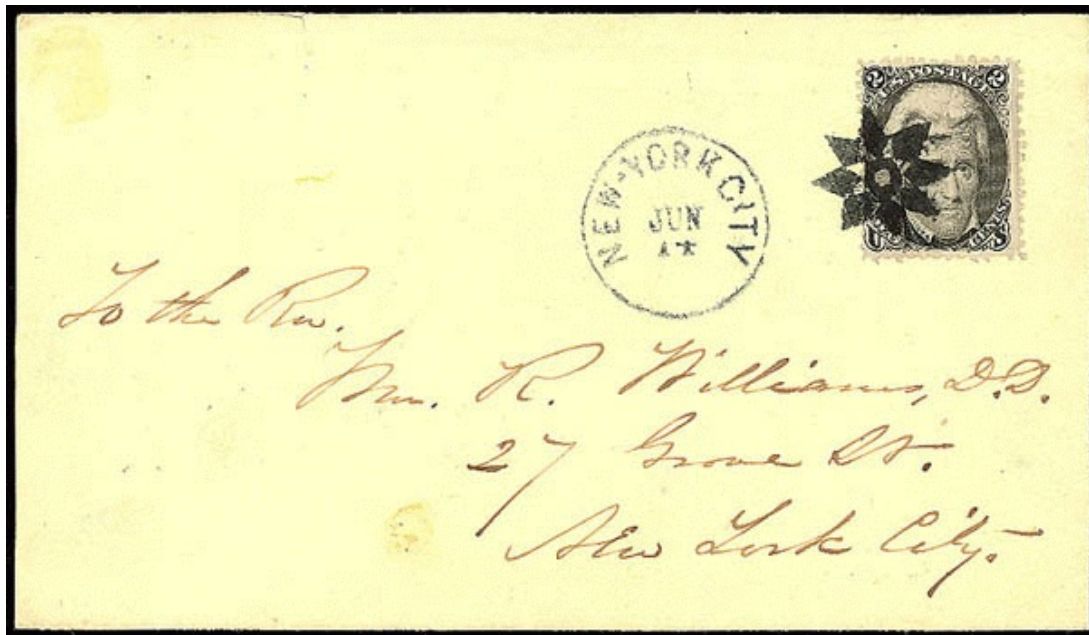
GE-R 40



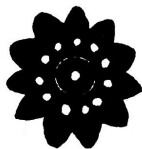
GE-R 40



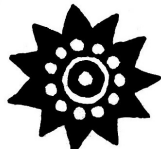
GE-R 40



GER 41



GE-R 43
Bristol, IN 1861



GE-R 44 [USCC 4180]
1861



GE-R 44A
1869



GE-C 45
Ripon, WI 1861

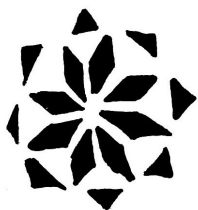


GER 43



GE-R 45

Geometrics - Radial



GE-R 46

Bridgeport, CT 1/25/1866- 3/23/1866



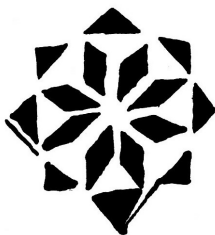
GER 46



GER 46

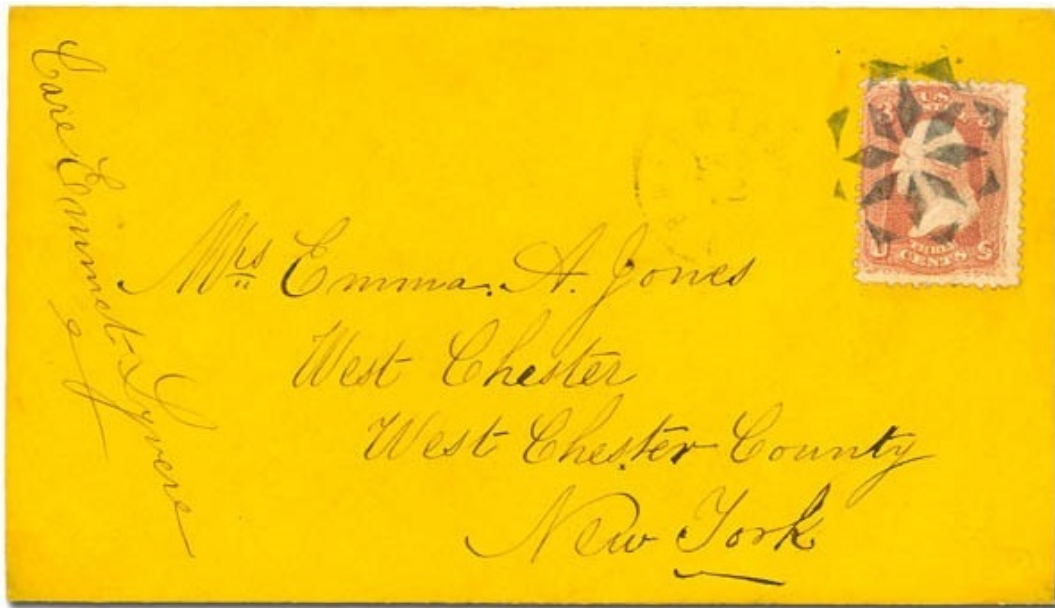


GE-R 46



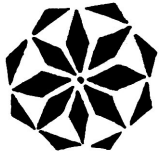
Larger than GE-R 46

GE-R 47
 Bridgeport, CT 1861



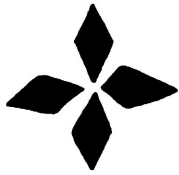
GE-R 47

Geometrics - Radial



Dot in center

GE-R 48
Bridgeport, CT 1861



Four petals

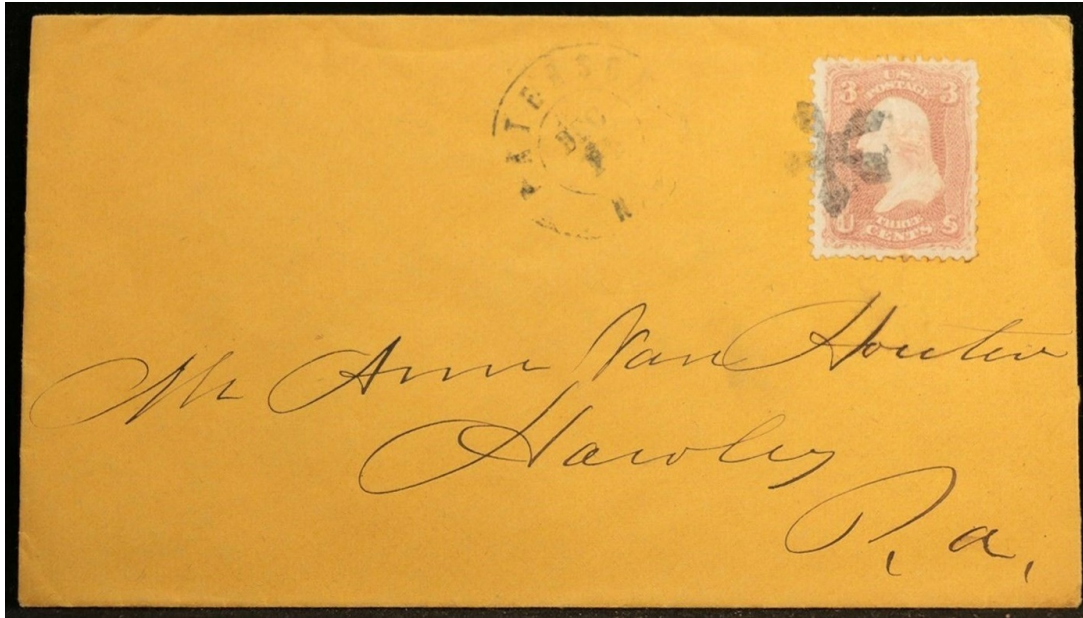
GE-R 49
1861



Five petals

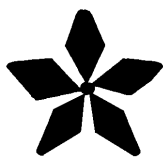


GE-R 50
Paterson, NJ 1861-66



GE-R 50

Geometrics - Radial



Five petals



GE-R 50A
1861



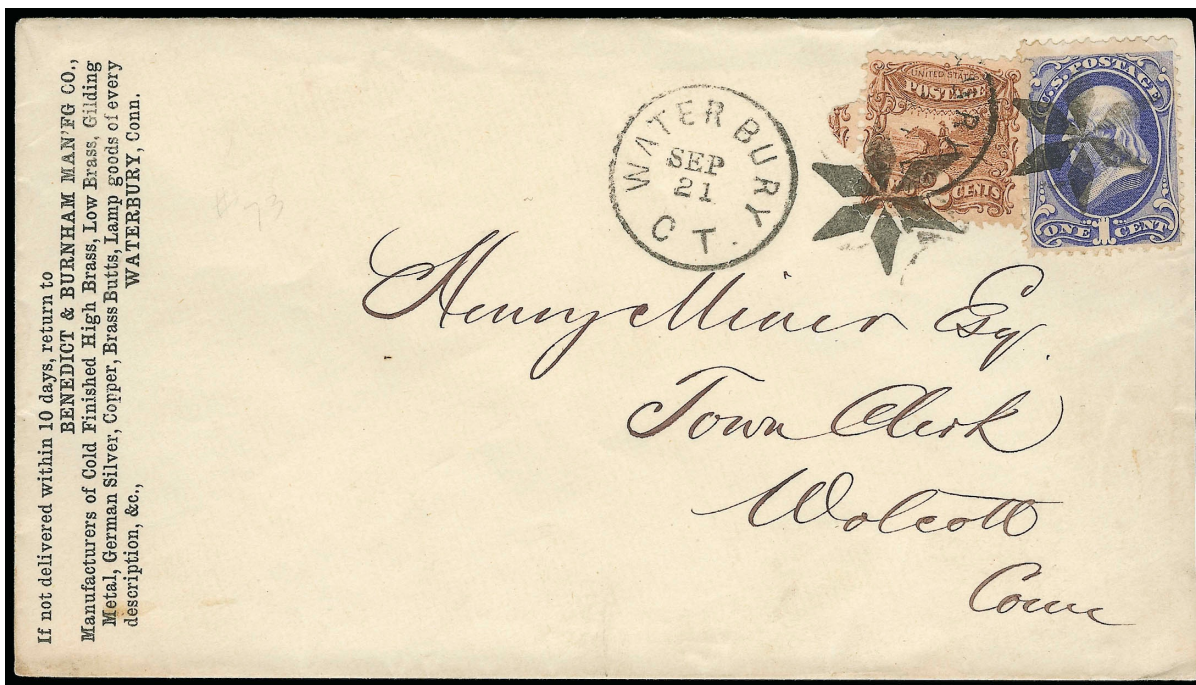
Six petals

GE-R 51 [Rohloff P-2]
Waterbury, CT 9/21/1869



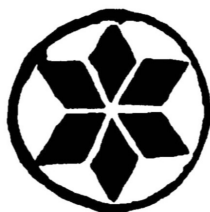
Six pedals

GE-R 51A [Rohloff P-3]
Waterbury, CT 12/18/1865-
5/26/1870



GE-R 51

Geometrics - Radial



Six pedals



GE-R 51B

New York, NY 3/14/1863-3/16/1863

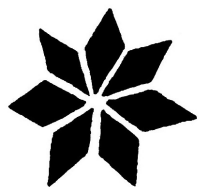


GE-R 51B



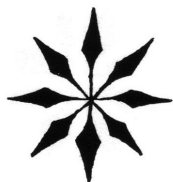
GE-R 51B

Geometrics - Radial



Eight petals

GE-R 52 [Rohloff P-5 through P-9]
Waterbury, CT 10/12/1865-7/3/1867



GE-R 52A [USCC 3641]
1861



GE-R 52



GE-R 52

Return to CITIZENS' NATIONAL BANK,
WATERBURY, Conn.,
if not called for within 10 days.

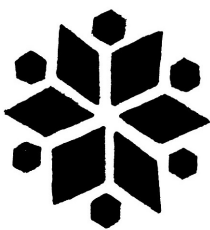


GE-R 52

Geometrics - Radial



GE-R 53
Putnam, CT 1861



GE-R 54
Putnam, CT 1861



Six petals



Six petals



GE-R 55
Plainville, CT 1861



GE-R 53



GE-R 54



GE-R 54

Geometrics - Radial

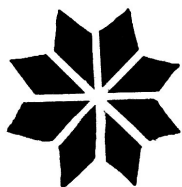


GE-R 56
1867



GE-R 56A
1861

Geometrics - Radial



Eight petals

GE-R 57
Bridgeport, CT 1/14/1867



GE-R 57A
1861



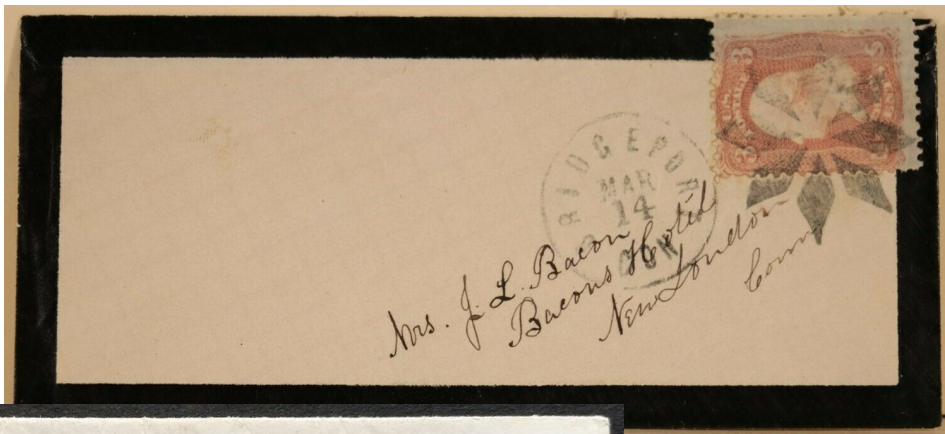
GE-R 57



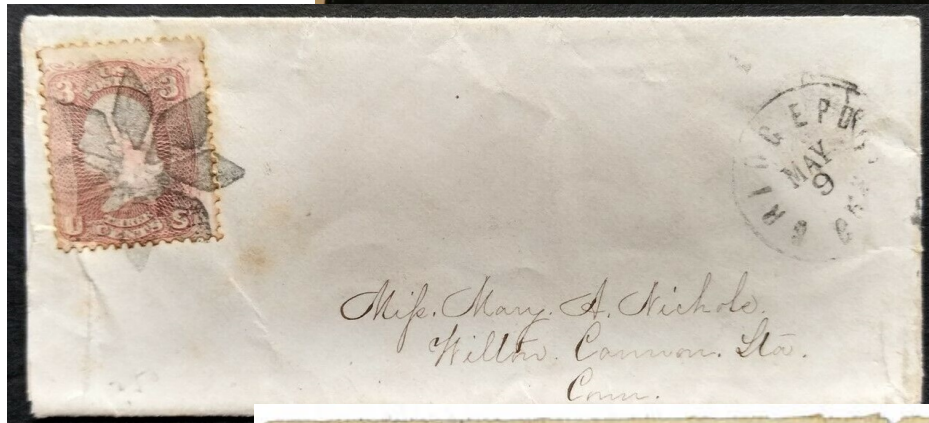
GE-R 57



GE-R 57



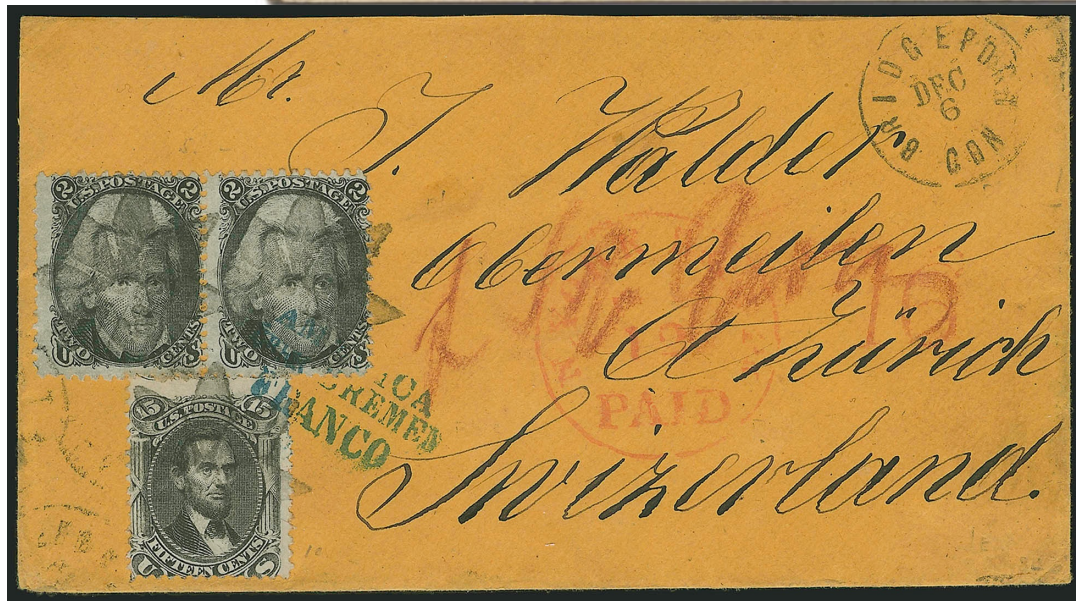
GE-R-57



GE-R-57

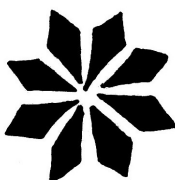


GE-R-57



GE-R-57

Geometrics - Radial



Eight petals



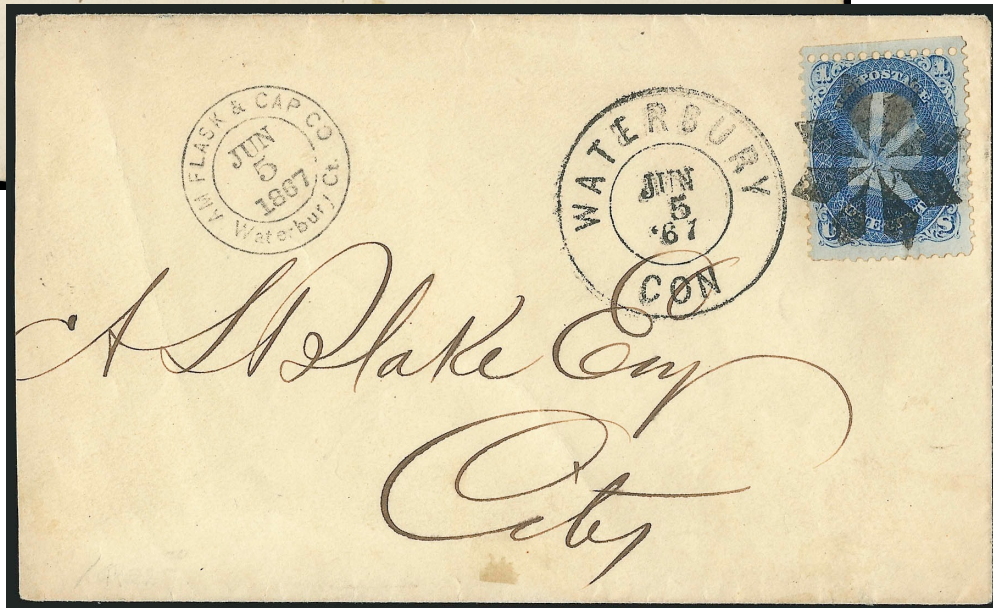
GE-R 58 [Rohloff P-13, P14 & P15]
Waterbury, CT 1867



GE-R 58



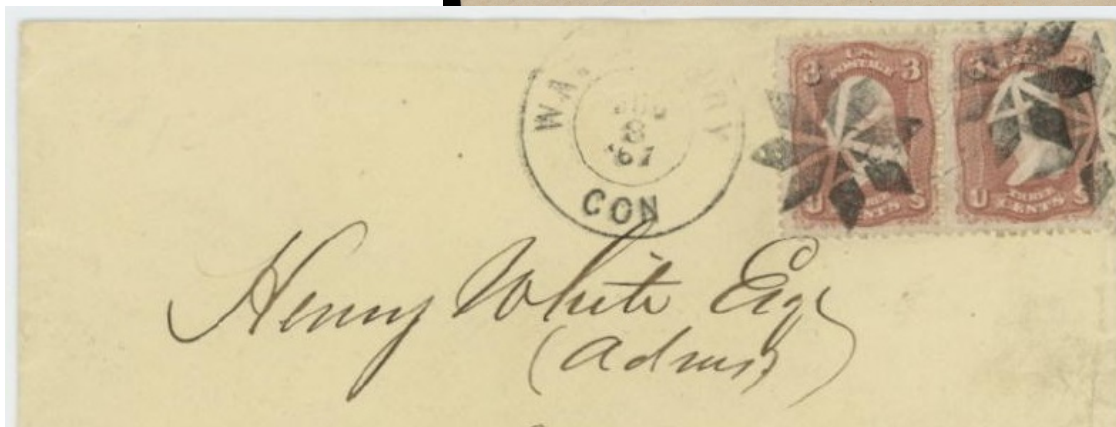
GE-R 58



GE-R 58



GER-58



GER-58



GER-58



GER-58

Geometrics - Radial



Eight petals



GE-R 58A
1861



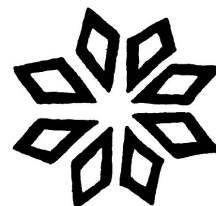
Eight pedals

GE-R 58B
1867



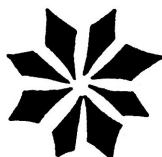
Eight pedals

GE-R 58C blue
1869



Eight petals

GE-R 59 [Rohloff P-25]
Waterbury, CT 1869



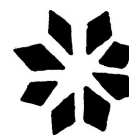
Eight petals



GE-R 60
New York, NY 1861, 1867



GE-R 60A
Pawtucket, RI 12/29/1867(?)



Eight petals

GE-R 61 [Blake-Davis 1465]
Boston, MA 1861



GE-R 60A

Geometrics - Radial



Eight petals (Masonic?)



Worn device



GE-R 61A
New York, NY 12/6/1869-2/3/1870



GE-R 61A



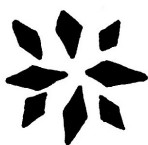
GE-R 61A



GE-R 61A



GE-R 61A



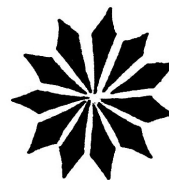
GE-R 62 [USCC 2511]
Union Springs, NY □ 1861



Ten petals



GE-R 63 [Rohloff P-28]
Waterbury, CT □ 9/11/1867-2/12/1868



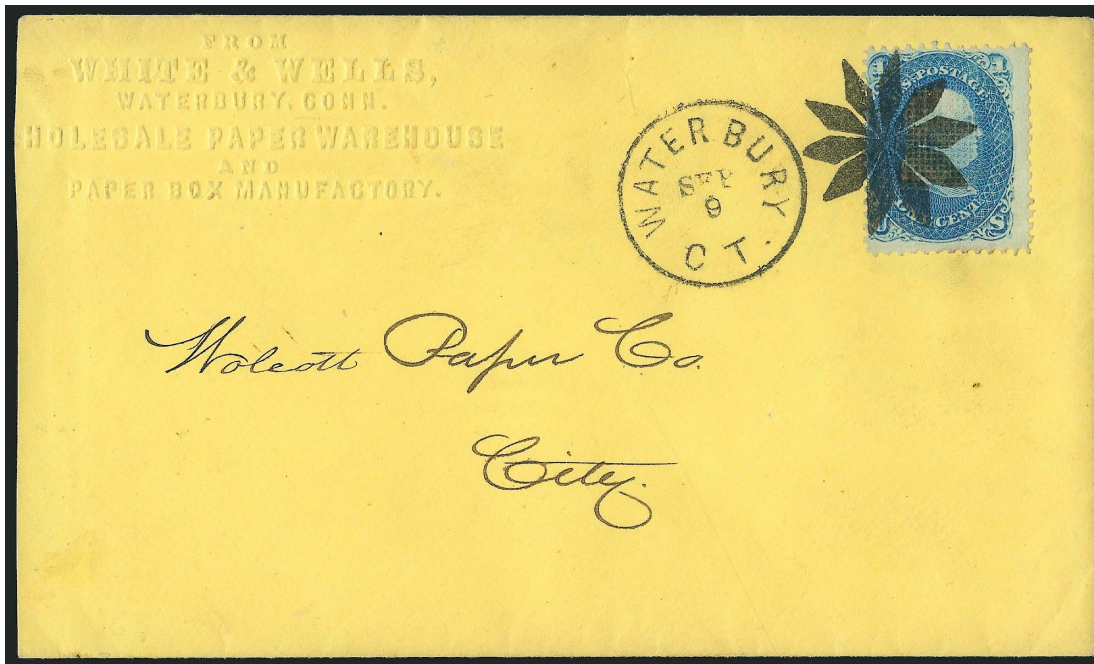
Eleven petals

GE-R 64 [Rohloff P-29]
Waterbury, CT □ 2/19/1868-3/6/1868

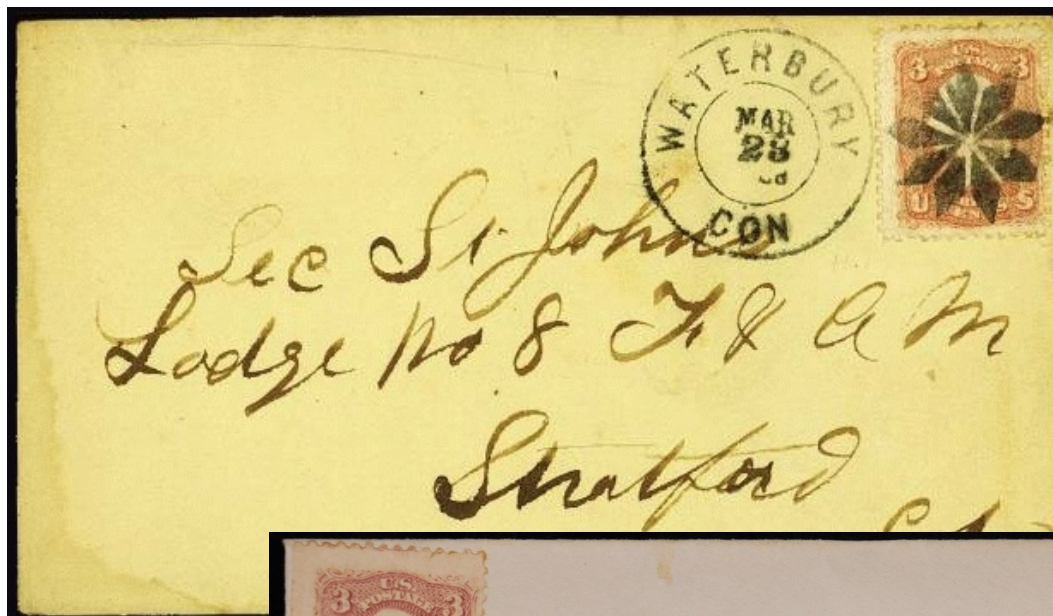


Nine petals

GE-R 64A [Rohloff P-27]
Waterbury, CT □ 3/14/1868-4/11/1868



GER 63



GE-R 64A

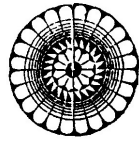


GE-R 64A

Geometrics - Radial



GE-R 65
1867



"Wheel of Fortune"



GE-R 66 [Cole WOF-1]
numerous towns used this device in the 1880's



updated May 8, 2023 (10:56am)