

Geometrics - Circular



GE-C 95 [USCC 2522]
New York, NY 5/21/1864(?)



GE-C 95

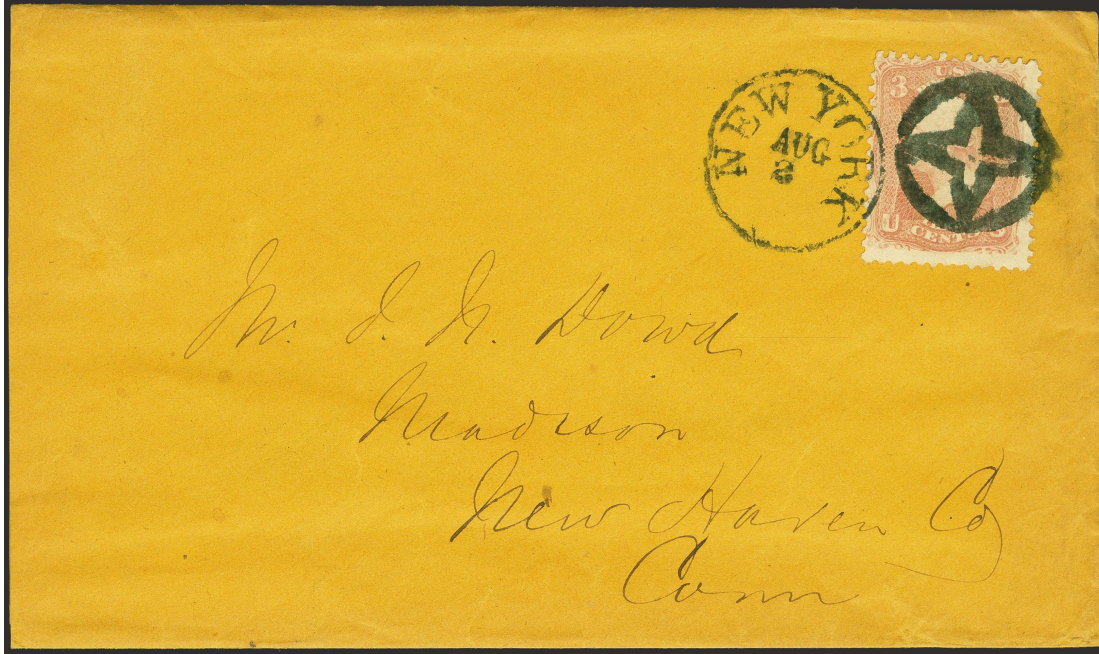


GE-C 95

Geometrics - Circular



GE-C 96
New York, New York 8/2/1865(?)



Geometrics - Circular



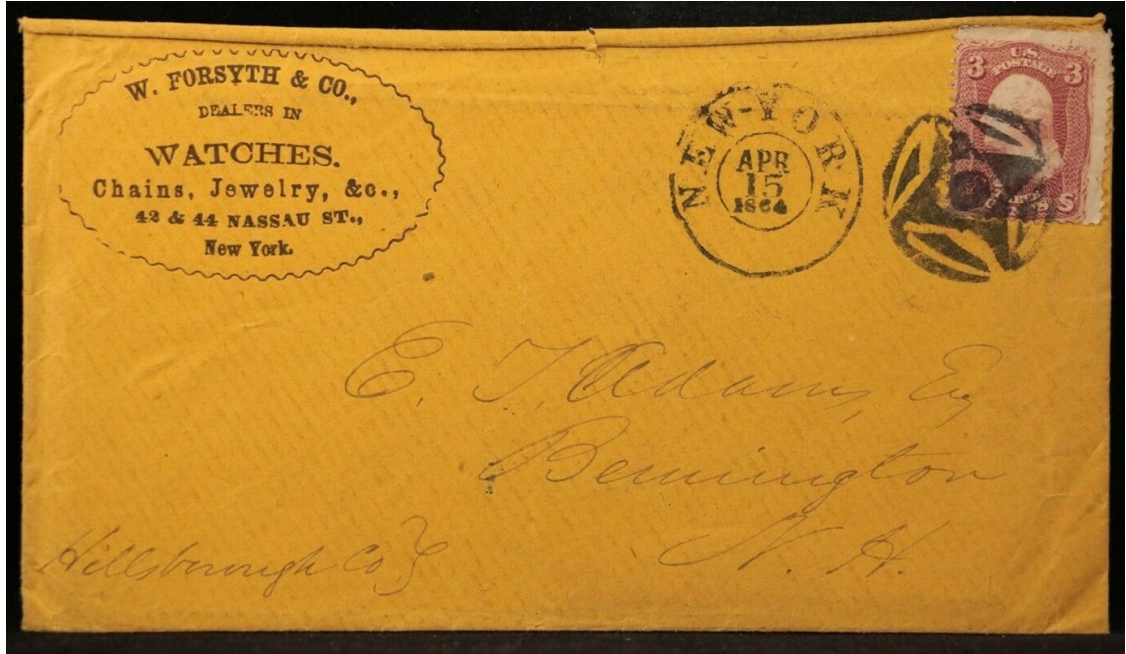
GE-C 97
New York, NY 4/15/1864



GE-C 97A
1869



GE-C 98
New York, NY 1861



GE-C 98



GE-C 98

Geometrics - Circular



GE-C 99
New York, NY 1861



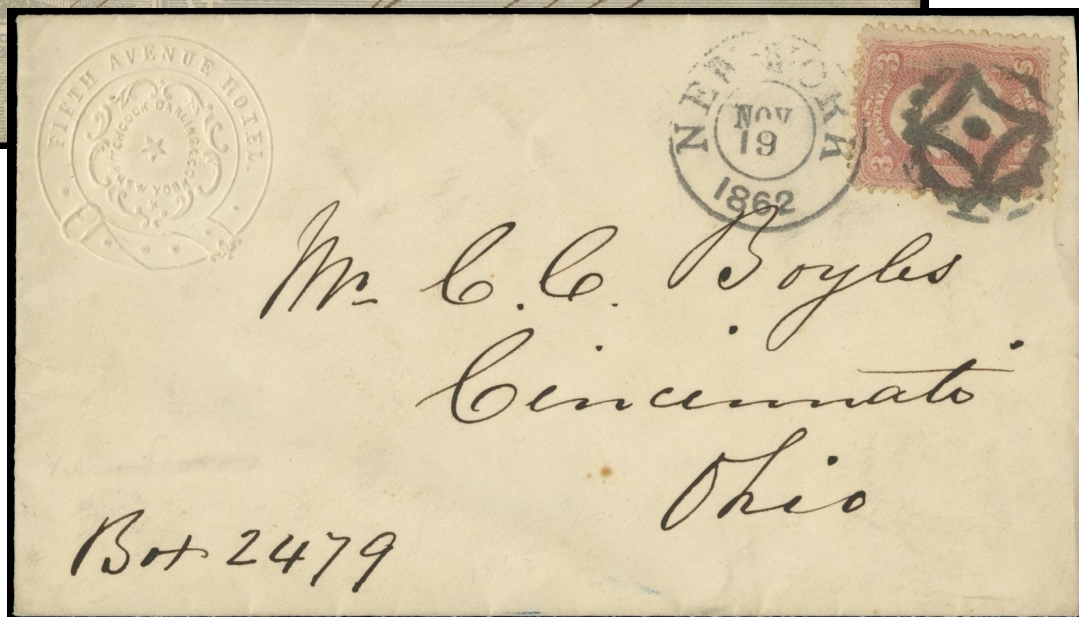
GE-C 100 [USCC 2413]
New York, NY 11/19-20/1862



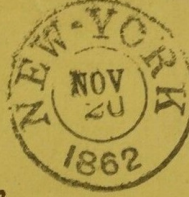
GE-C 100



GE-C 100



GE-C 100



Smith Tuttle Esq
Fairhaven
Conn

GE-C-100

GE-C-100



Miss Almeda A. Lucas
Care of A. M. Lucas Esq
Ithaca
Compheris Co
N. Y.



Miss F. Hogan
Care of Mr E. Lawrence
No 12 West 31st Street
New York

GE-C-100

Geometrics - Circular



GE-C 101
New York, NY 1861



GE-C 101A
New York, NY 1861




GE-C 101A

Geometrics - Circular



19 to 21mm diameter



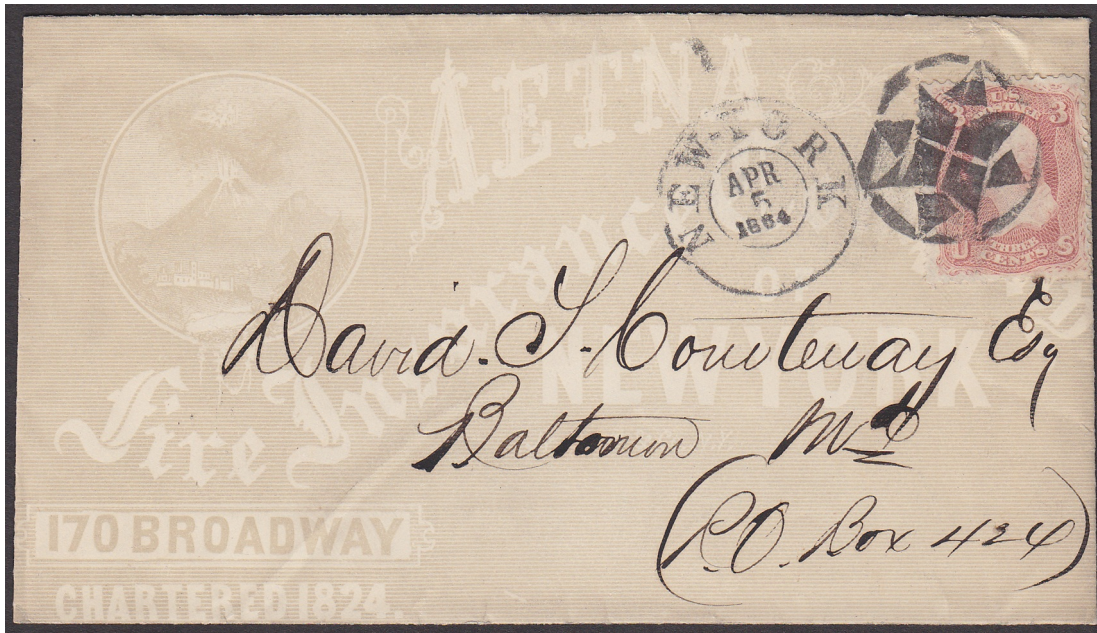
GE-C 103 black, red
New York, NY  4/5/1864



24 to 25mm diameter



GE-C 104 blue, black
New York, NY  6/17/1864



GE-C 104



GE-C-104



GE-C-104

Geometrics - Circular



GE-C 104A black
1861



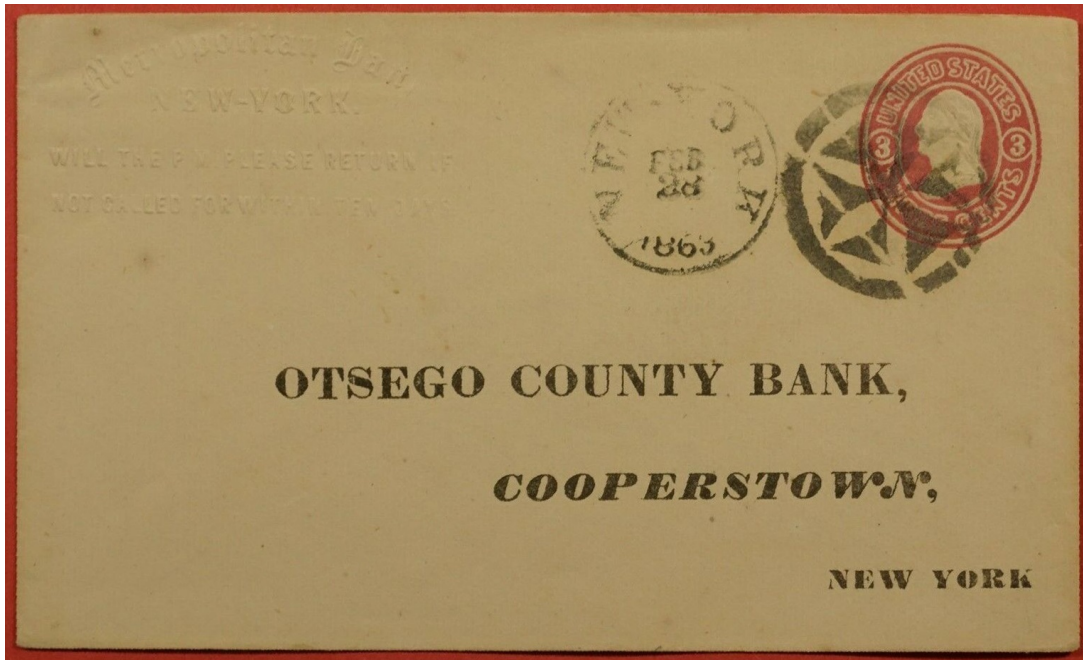
GE-C 104B
1861



GE-C 105
New York, NY 1861

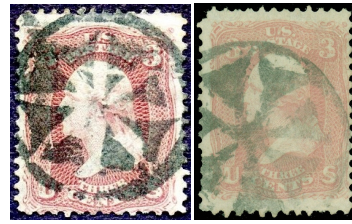
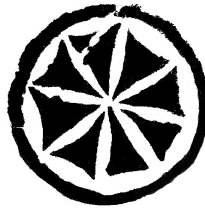
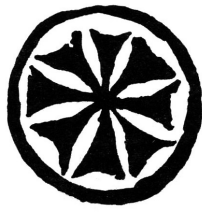


GE-C 106
New York, NY 2/28/1863



GE-C 106

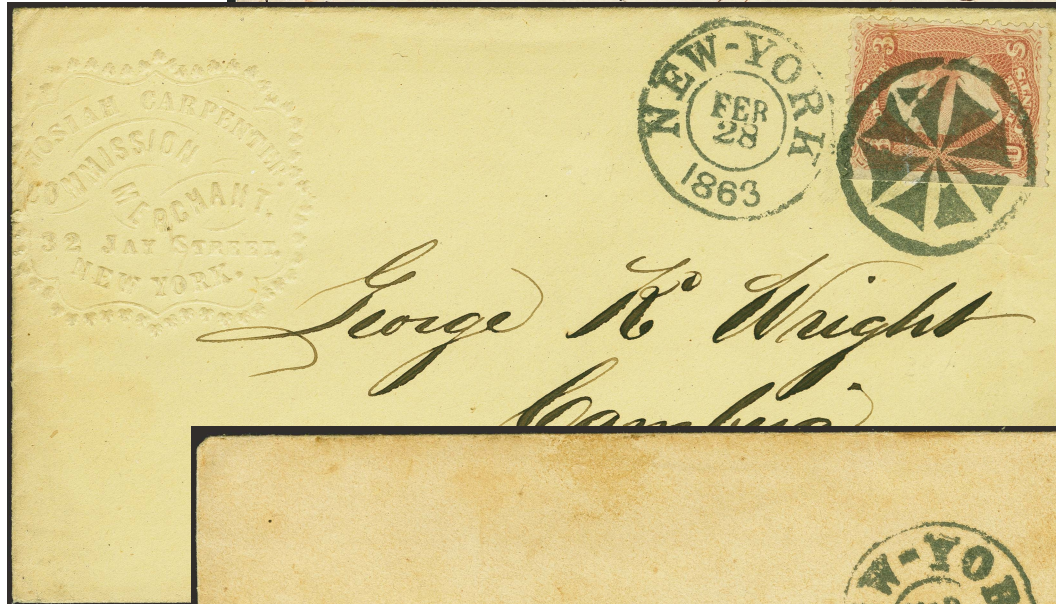
Geometrics - Circular



GE-C 107 [USCC 3705]
New York, NY □ 2/28/1863-3/4/1863



GE-C 107



GE-C 107



GE-C 107

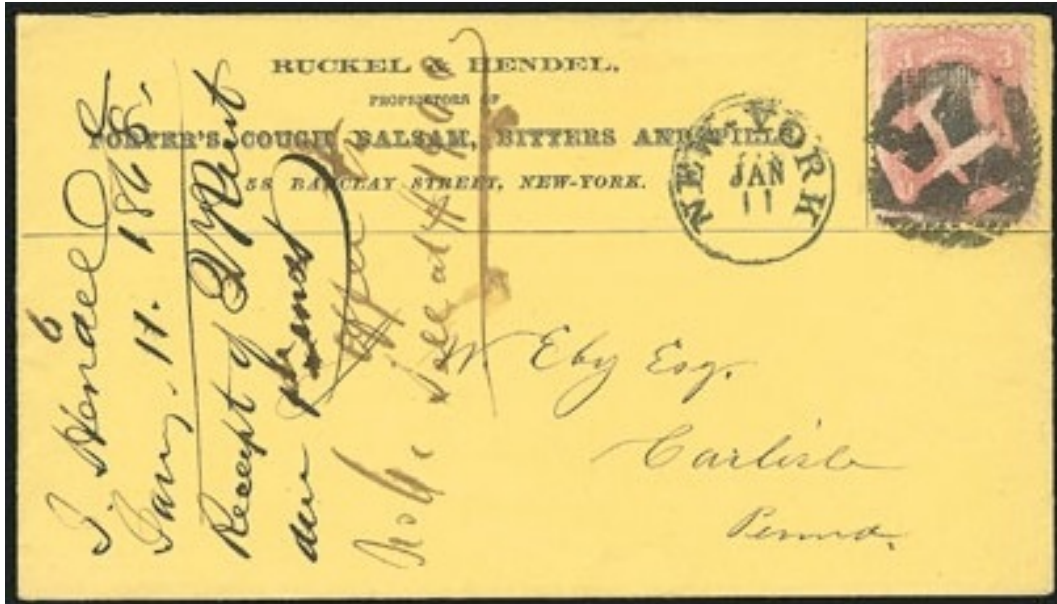
Geometrics - Circular



GE-C 108
New York, NY 1/11/1868



GE-C 109
New York, NY 1861

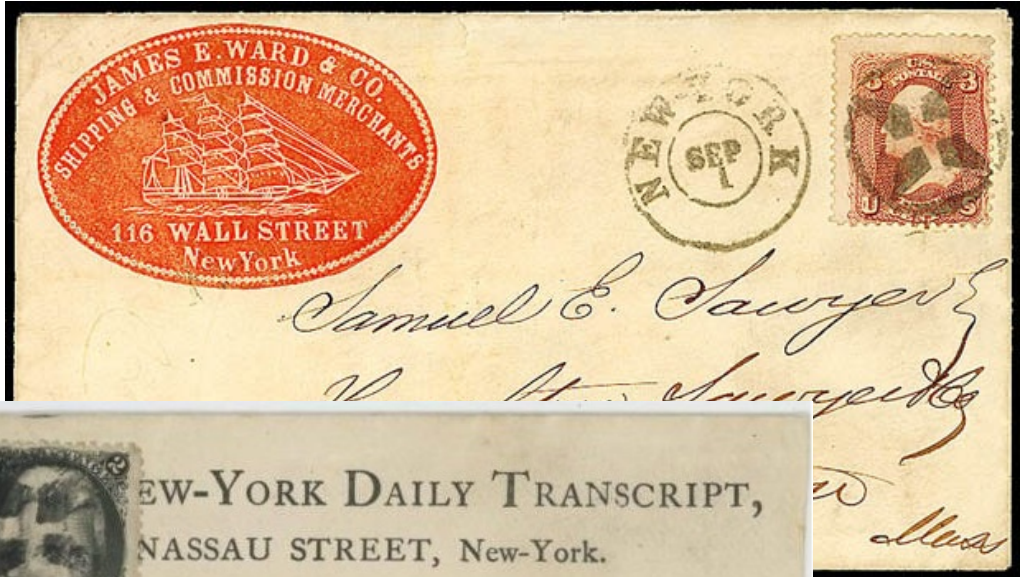


GE-C 108

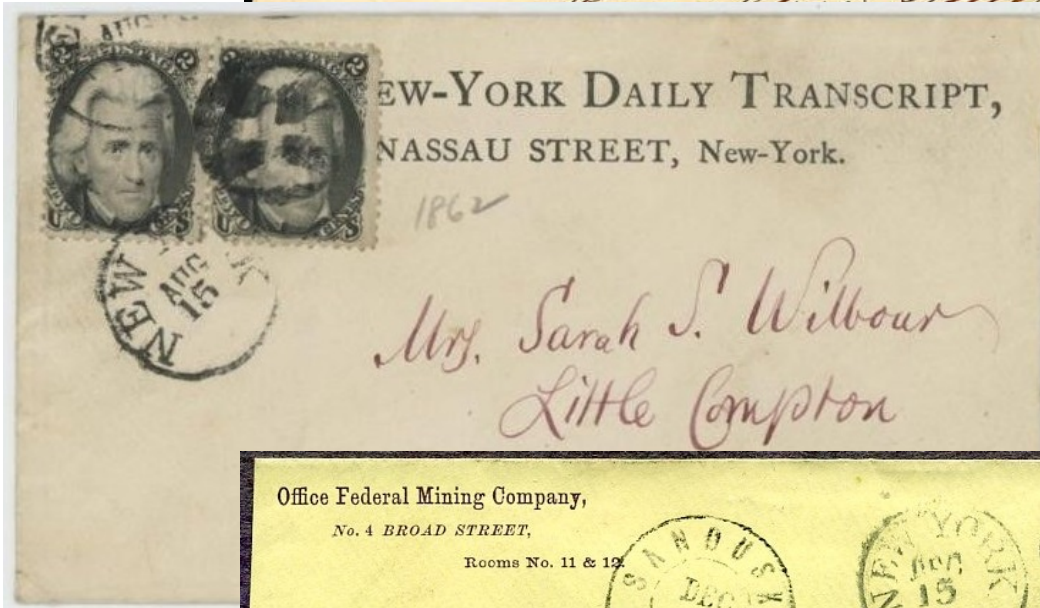
Geometrics - Circular



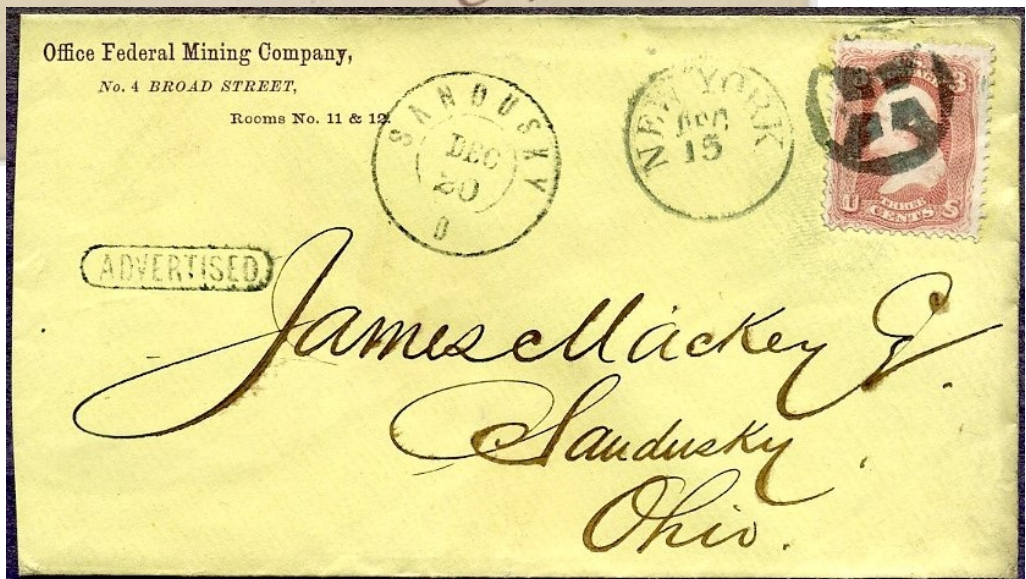
GE-C 110 black, blue
New York, NY 1861-63



GE-C 110



GE-C 110



GE-C 110

Geometrics - Circular



GE-C 111
New York, NY 1861



GE-C 111



GE-C 112
New York, NY 1861



GE-C 112

Geometrics - Circular



GE-C 112A
Thomaston, ME 8/9/1864-8/10/1864



GE-C 112A



GE-C 112A

Geometrics - Circular



GE-C 113
New York, NY 1861-64



GE-C 113

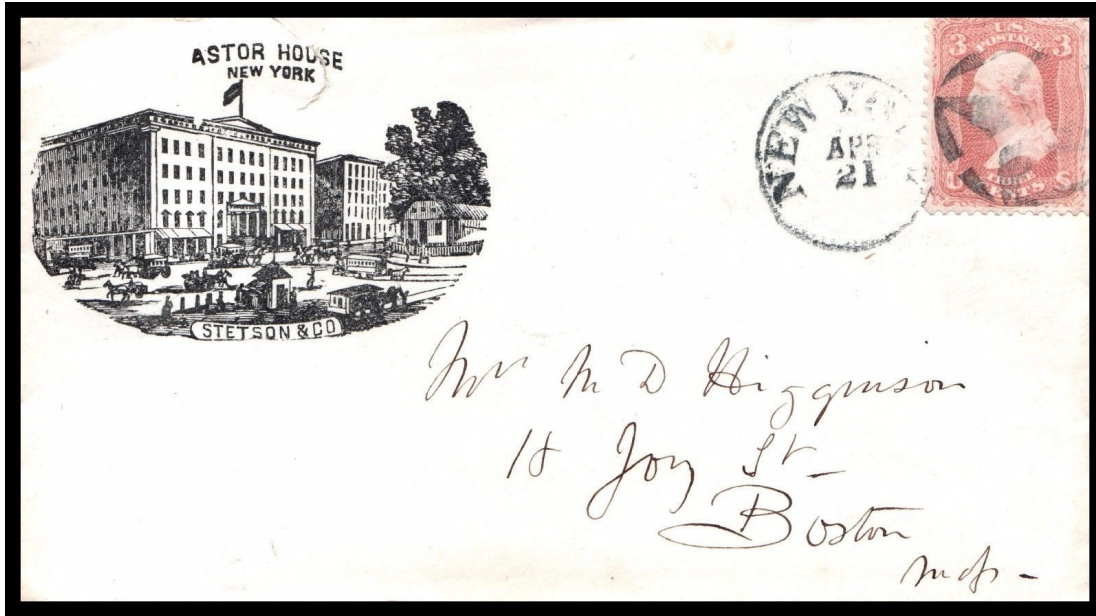
Geometrics - Circular



GE-C 114
Boston, MA 1861

need scan

GE-C 114A
NEW York, NY 1861



GE-C 114A

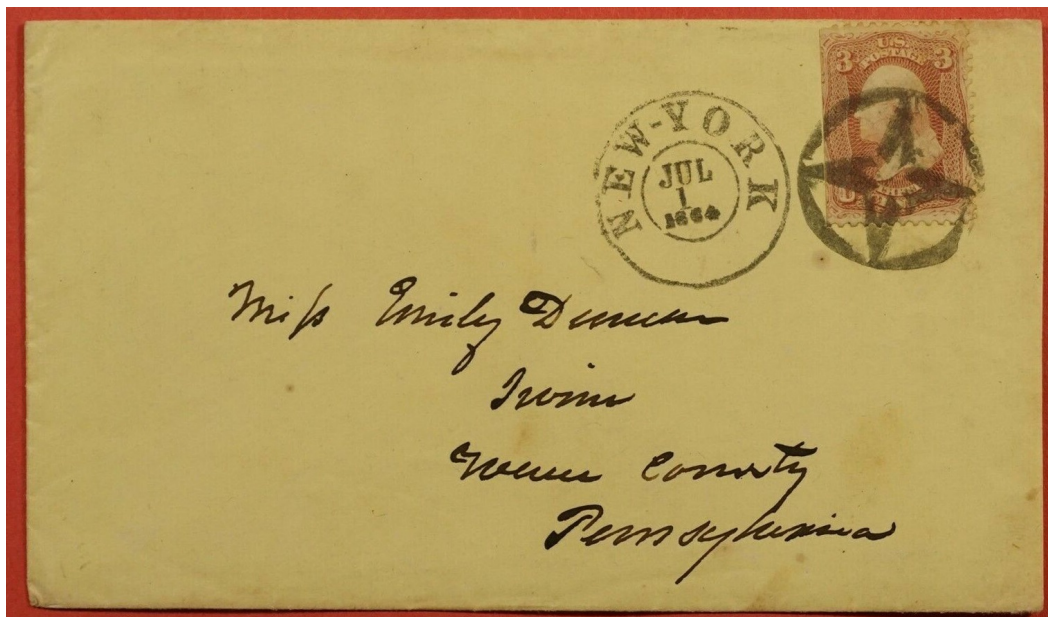
Geometrics - Circular



GE-C 115 blue, black
New York, NY 7/1/1864



GE-C 115



GE-C 115

Geometrics - Circular




GE-C 116 black, blue
New York, NY 1861

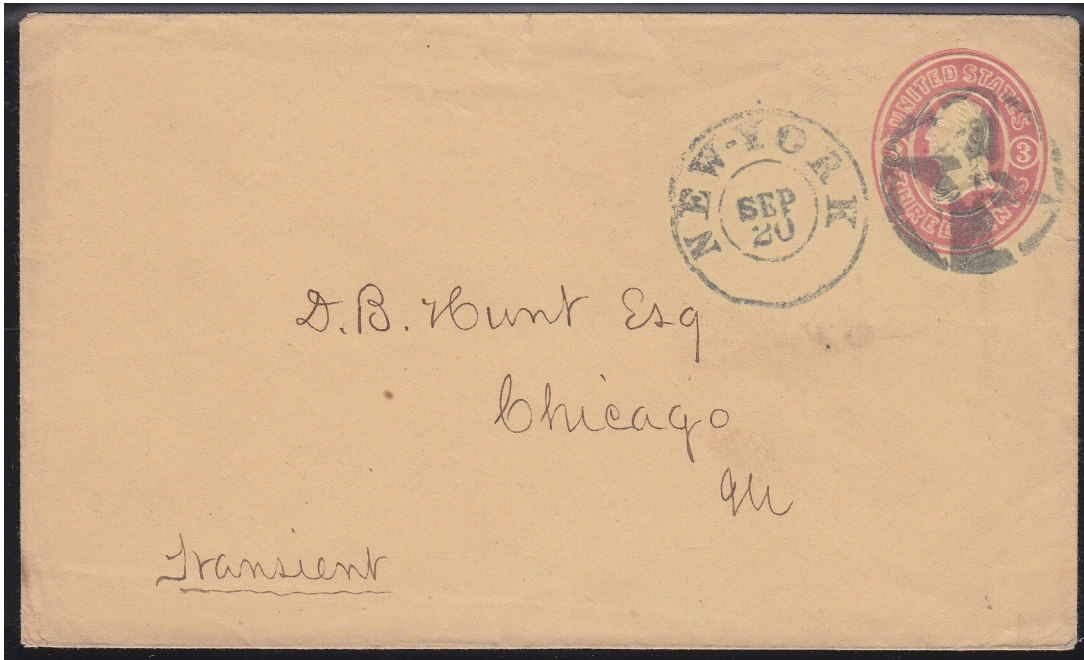


GE-C 116

Geometrics - Circular



GE-C 117
New York, NY  1861



GE-C 117

Geometrics - Circular



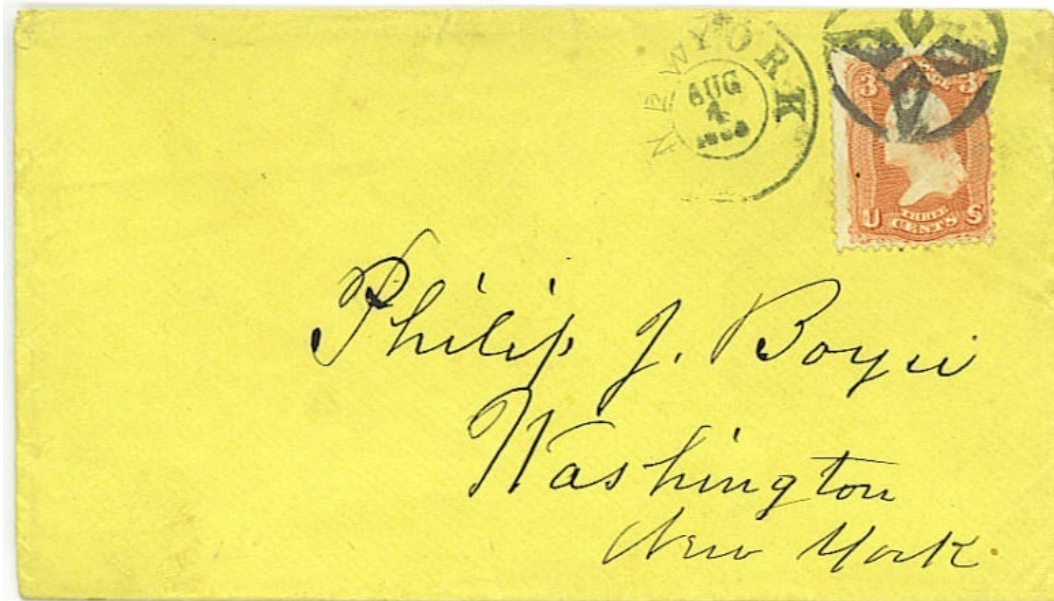
GE-C 118
New York, NY 1861



GE-C 119
New York, NY 1861



GE-C 118



GE-C 118

Geometrics - Circular



GE-C 121
New York, NY 1/21/1864-4/24/1864



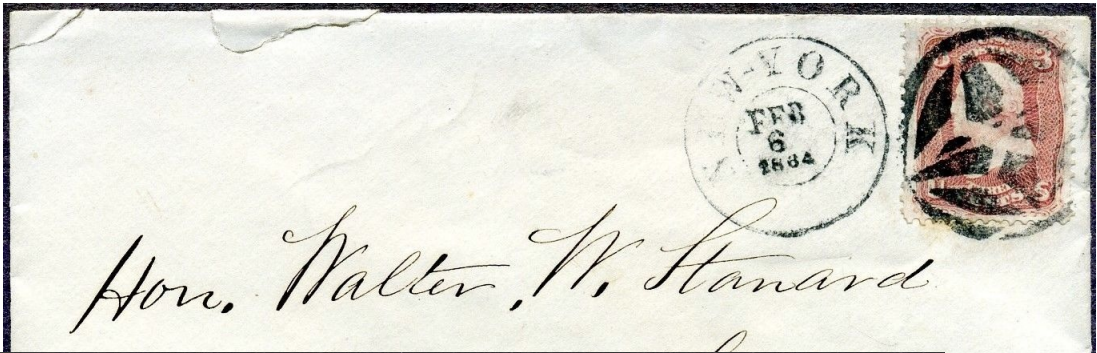
GE-C 121



GE-C 121



GE-C 121



GE-C-121



GE-C-121




GE-C-121



GE-C-121

Geometrics - Circular



GE-C 122
New York, NY  1861

Geometrics - Circular



GE-C 122A
New York, NY 1861



GE-C 123
New York, NY 11/25/1862-3/8/1864



GE-C 123



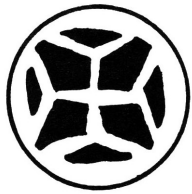
GE-C 123



GE-C 123



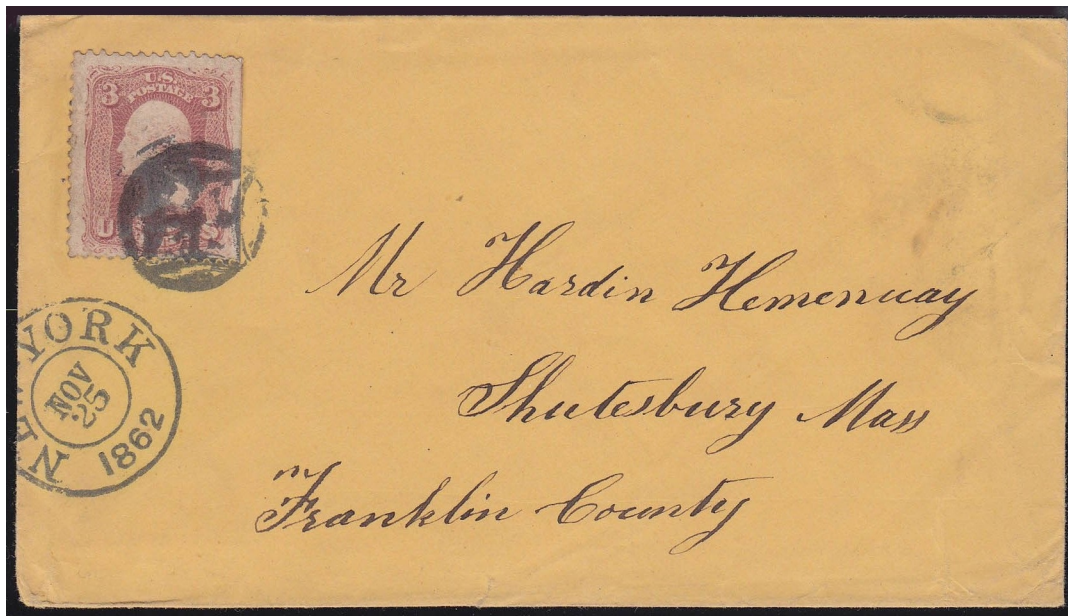
GE-C 123



GE-C 124
Providence, RI □ 1861



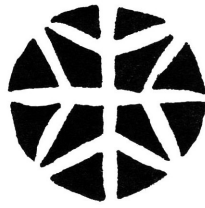
GE-C 125 [USCC 2416]
New York, NY 1861



GE-C 125

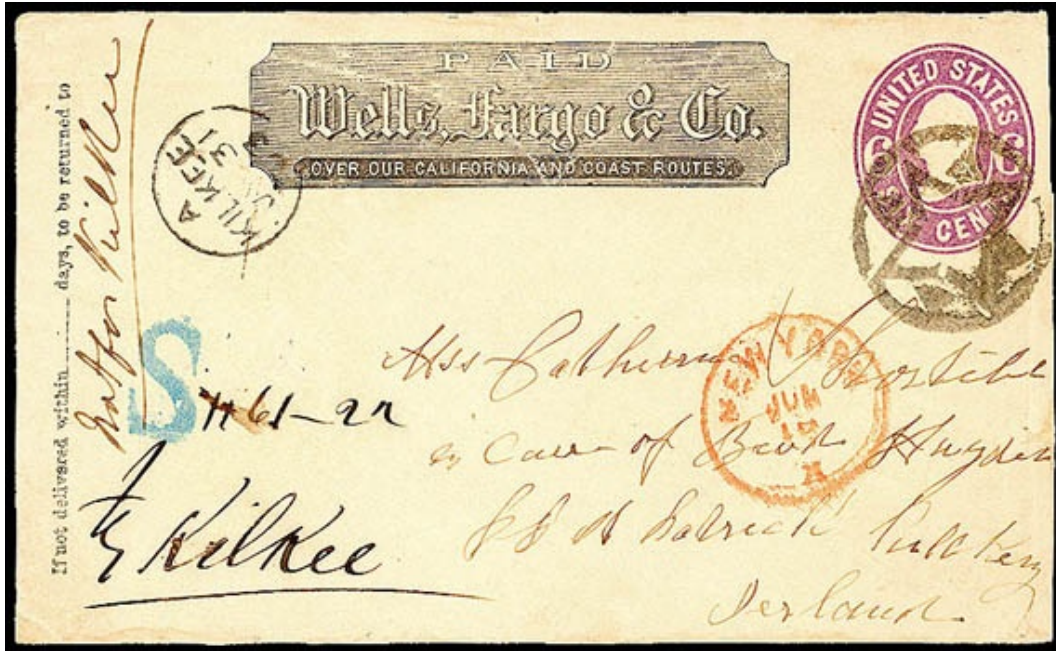
Geometrics - Circular

need scan



GE-C 125A
New York, NY □ 6/13/1863

GE-C 126 blue
Springfield, MA □ 1861



GE-C 125A

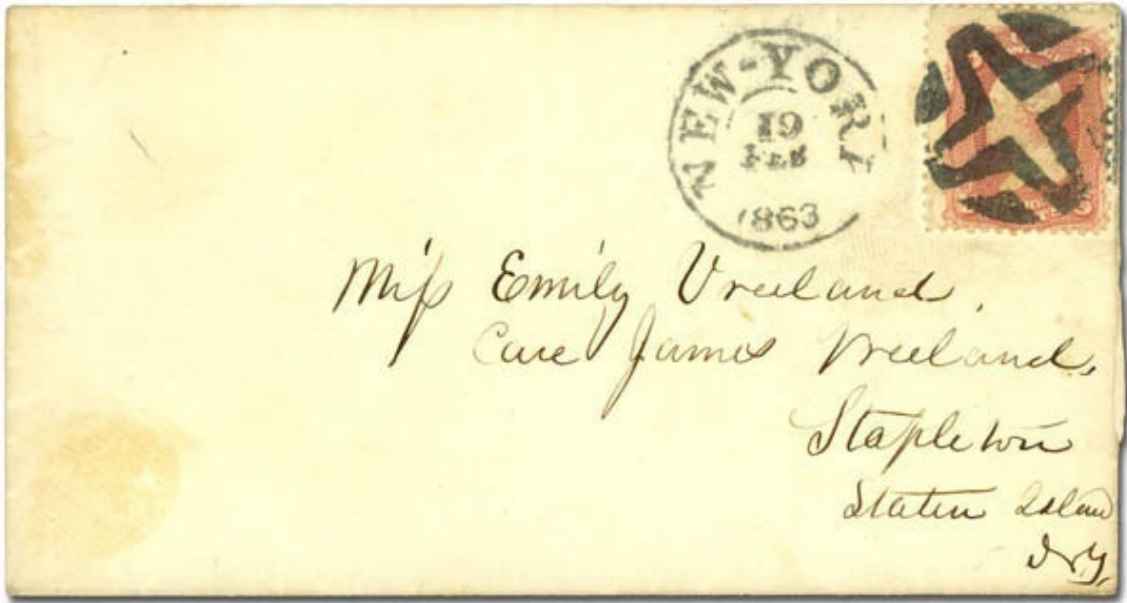


GE-C 126

Geometrics - Circular



GE-C 127 [Skinner NYFM 63-1]
New York, NY [] 2/19/1863



GE-C 127



City Delivery

GE-C 128
New York, NY 1861



GE-C 129
New York, NY [] 6/5/1866(?)



GE-C 129

Geometrics - Circular



GE-C 129A
1861

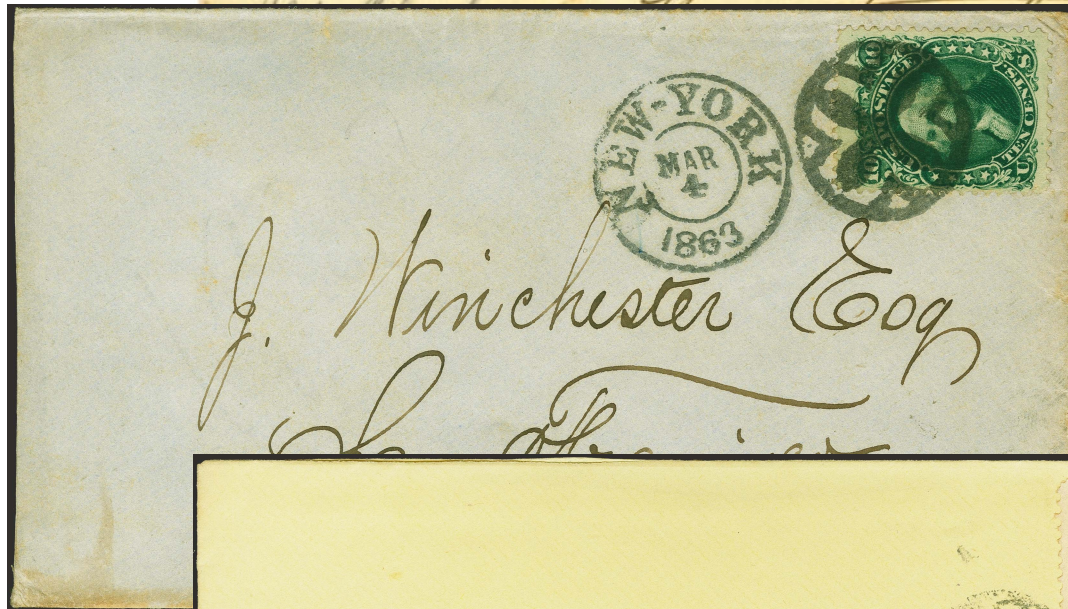
Geometrics - Circular



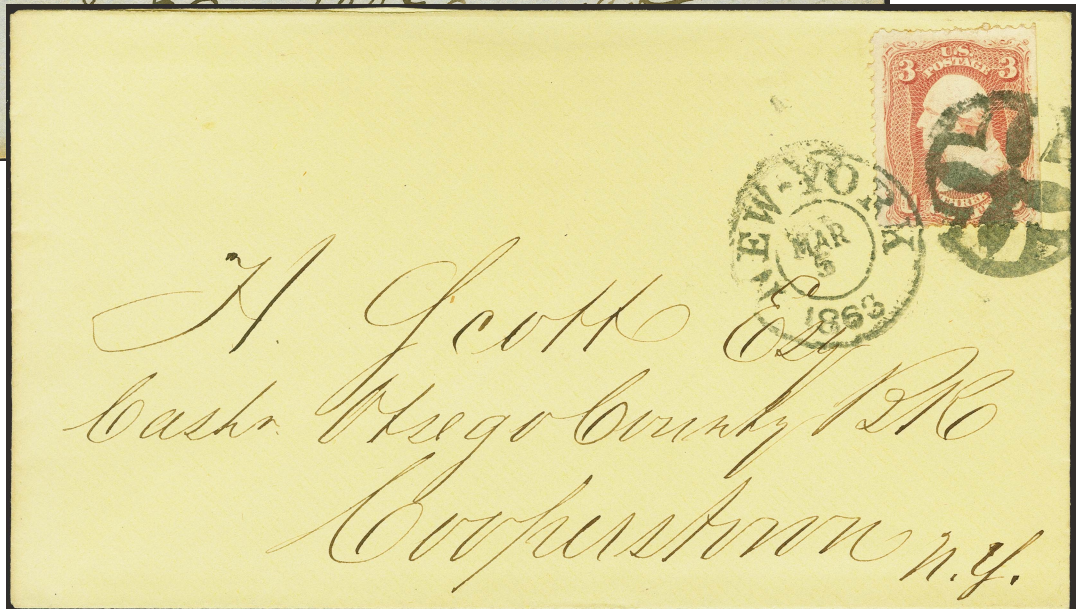
GE-C 130
New York, NY 3/4/1863-3/6/1863



GE-C 130



GE-C 130



GE-C 130



GE-C 130



GE-C 130



GE-C 131 [USCC 2531]
 Irwin Station, PA 1869

Geometrics - Circular



GE-C 131A
Newburyport, MA 1861



GE-C 131A



GE-C 131B
1866



GE-C 132
Irwin Station, PA 1869



GE-C 132A
1861



GE-C 133
New York, NY 1861

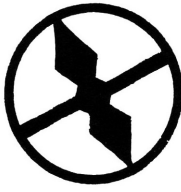



GE-C 134
1869



GE-C 135
Wilmington, NC 1861

Geometrics - Circular



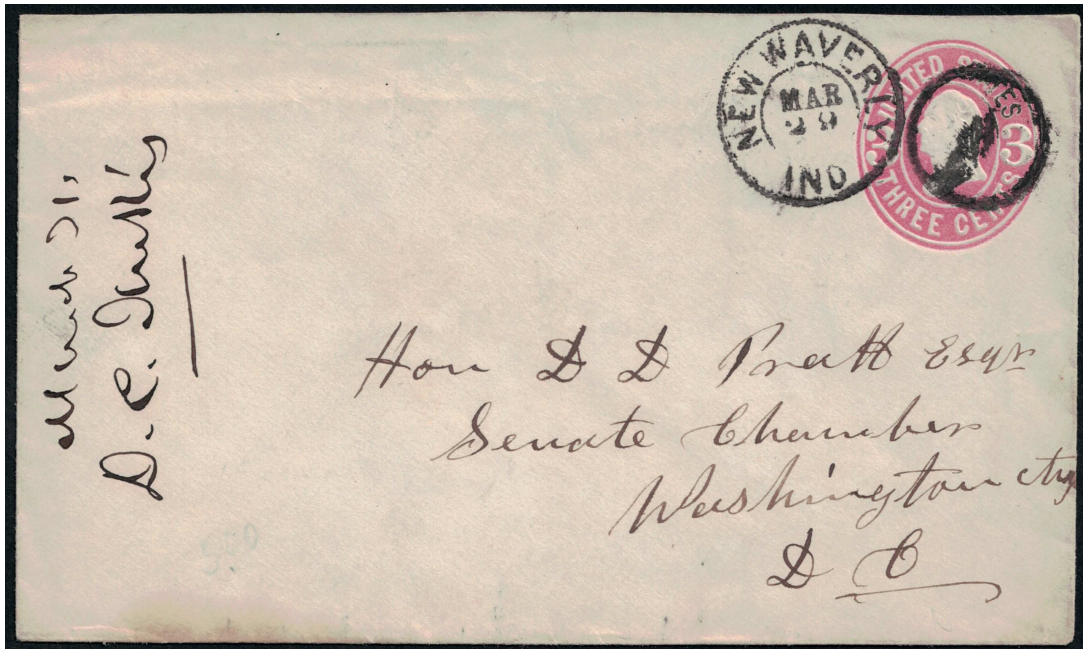
GE-C 136
Cold Spring, NY  1861



GE-C 136A
1864

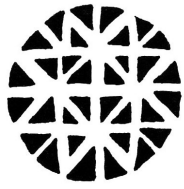


GE-C 136



GE-C 136A

Geometrics - Circular



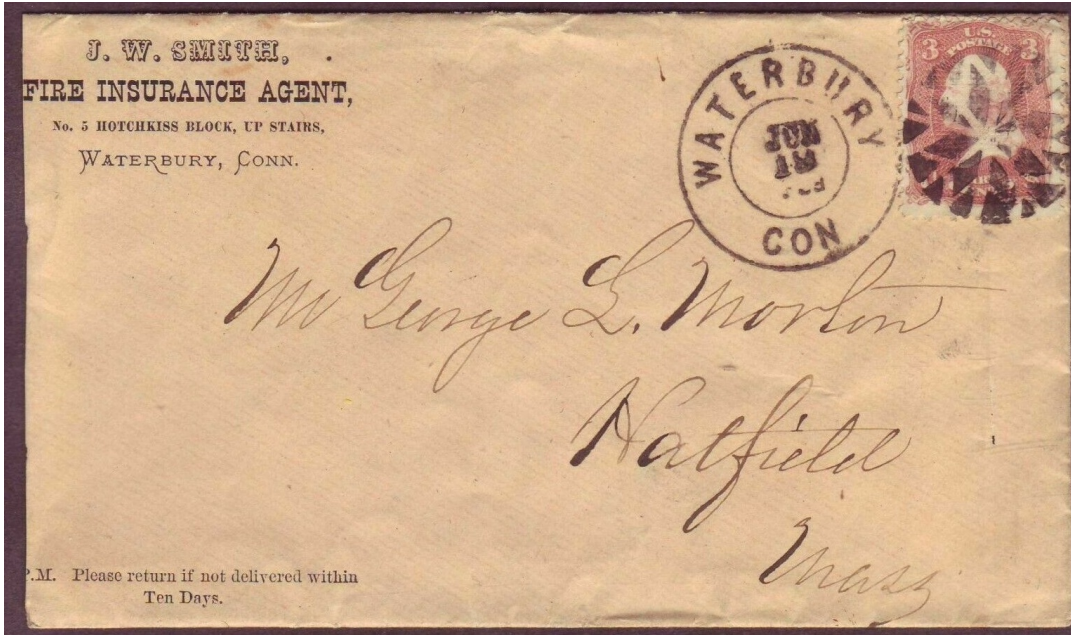
GE-C 137 [USCC 3617]
Woodville, MS □ 1851



GE-C 137A
1861



GE-C 138 [Rohloff D-20; USCC 3664]
Waterbury, CT □ 6/19/1868-7/14/1868



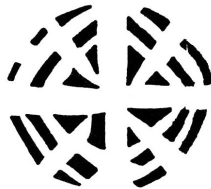
GE-C 138



GE-C 138A
[Simpson pg143-194]
New Bradford, NH



GE-C 139
Dearbornville, MI □ 1861



GE-C 140
1861



GE-C 141
1861



GE-C 142
1861



GE-C 142A
Homer, NY □ 1864



GE-C 142B blue
Memphis, TN 1861

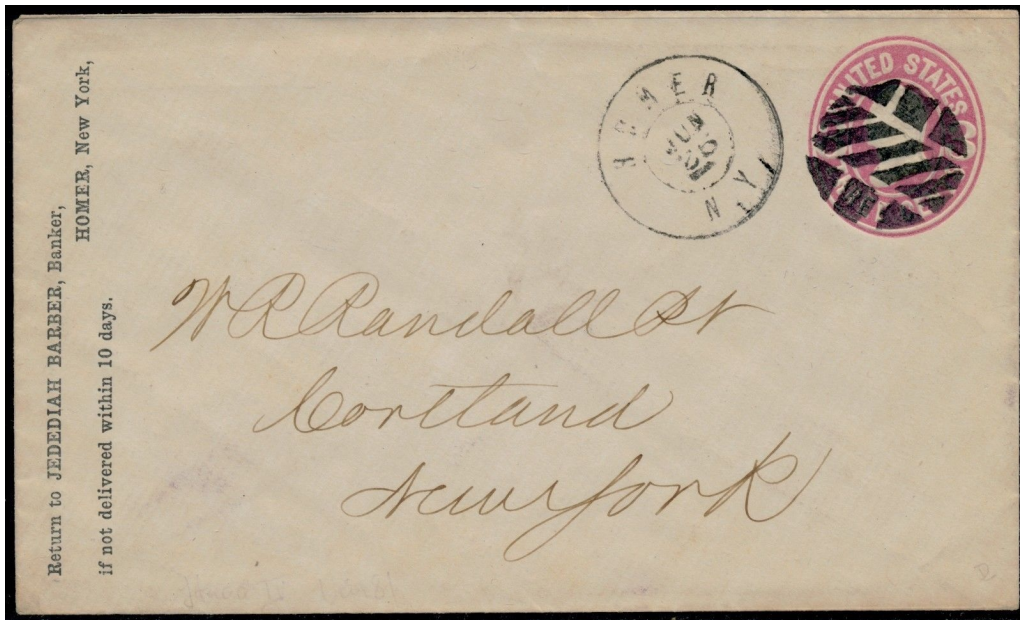


GE-C 143
Glasgow, MO □ 1861



GE-C 144
1861

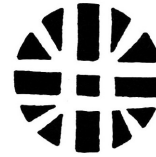
Geometrics - Circular



GE-C 142A



GE-C 144A [USCC 2814]
Hancock, MI 1861



GE-C 145
1861



GE-C 145A
Adams Centre, NY 1861



GE-C 145A



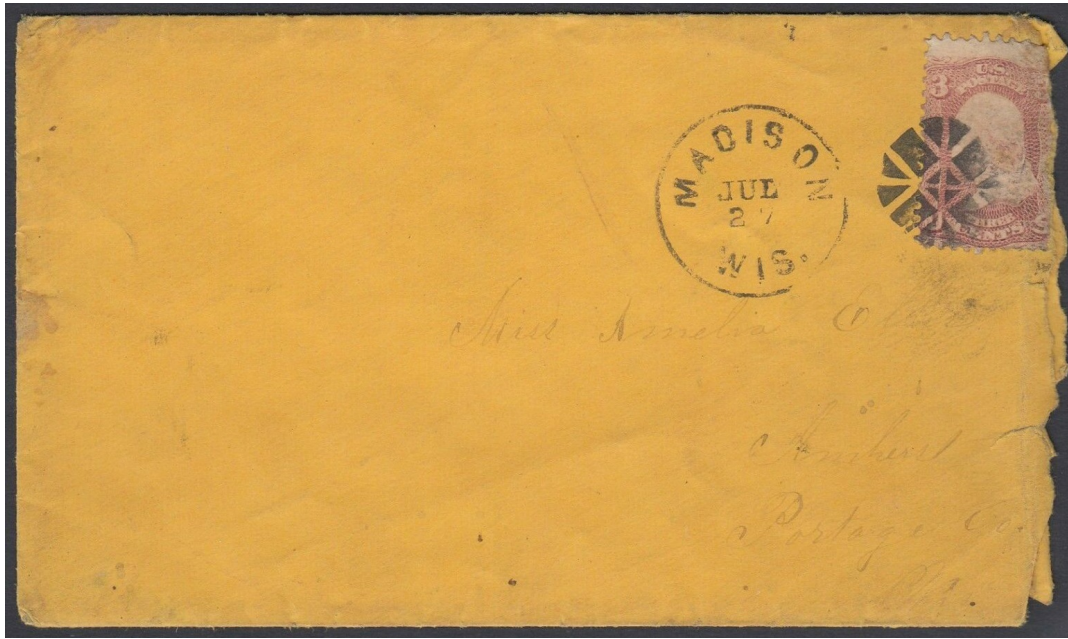
GE-C 146 [USCC 2476]
Madison, WI 1867



GE-C 147
Lee, MA 1861



GE-C 147A
1857



GE-C 146



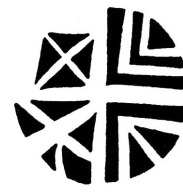
GE-C 148
Philadelphia, PA 6/6/1865



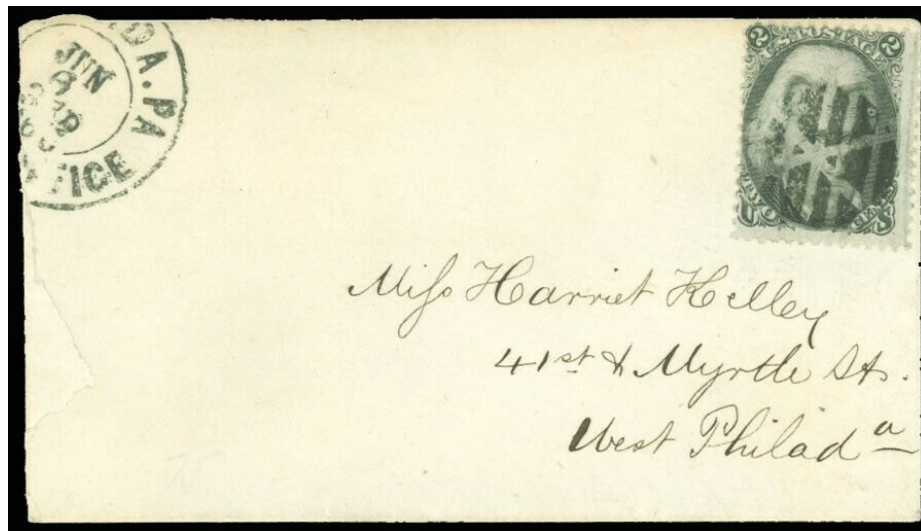
GE-C 149
1861



GE-C 150
1861



GE-C 151
1861



GE-C 148

Geometrics - Circular



GE-C 152 black, blue, red
Shelburne Falls, MA 1861867



GE-C 152



GE-C 152



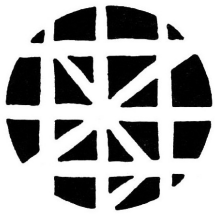
GE-C 152A
Savannah, GA 3/10/1865



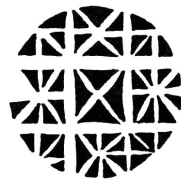
GE-C 152A



GE-C 152A



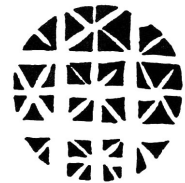
GE-C 153
1861



GE-C 154 blue
1861



GE-C 154A
1861

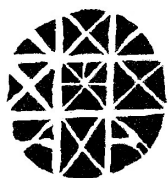


GE-C 155 blue
Brattleboro, VT 1861

Geometrics - Circular



GE-C 155A blue
Brattleboro, VT 1861



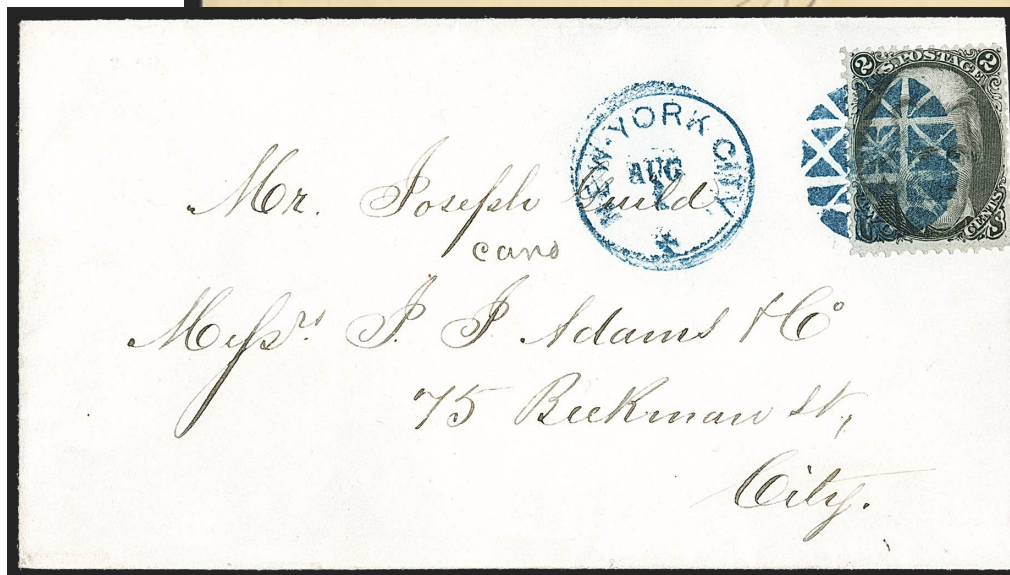
GE-C 155B blue
New York, NY 1863



GE-C 156
Old Point Comfort, VA 1861



GE-C 155A



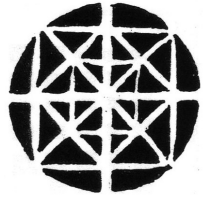
GE-C 155B



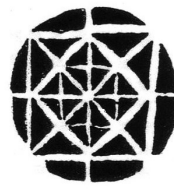
GE-C 157
Albany, NY(?) 1861



Geometrics - Circular



GE-C 157A [USCC 2260]
Old Point Comfort, VA 1861



GE-C 157B [USCC 2261]
Old Point Comfort, VA 1861



GE-C 157A



GE-C 157B

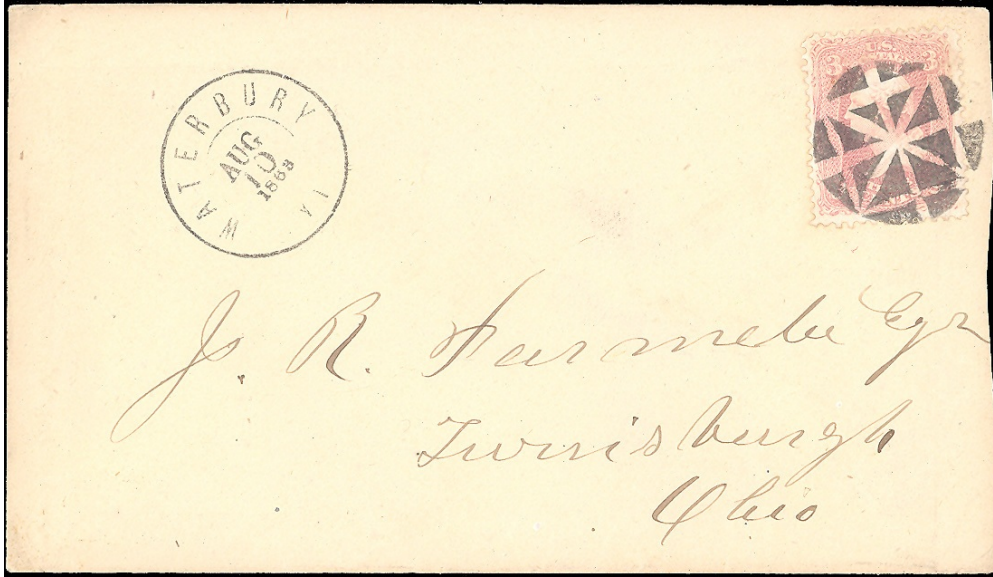
Geometrics - Circular



GE-C 158
Waterbury, CT 8/10/1863



GE-C 158A
Portsmouth, NH 1/27/1864



GE-C 158



GE-C 158A

Geometrics - Circular



GE-C 159
Albany, NY 1861



GE-C 159A
Chicago, IL 1861



GE-C 160 blue
Rutland, VT 1861



GE-P 159A



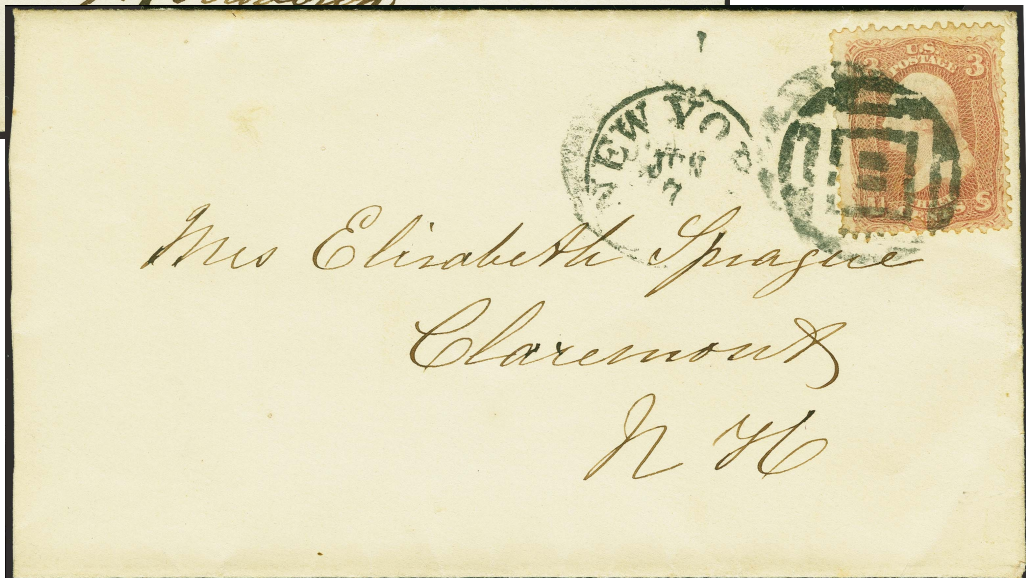
GE-C 161
New York, NY \square 1861



GE-C 161



GE-C 161



GE-C 161

Geometrics - Circular

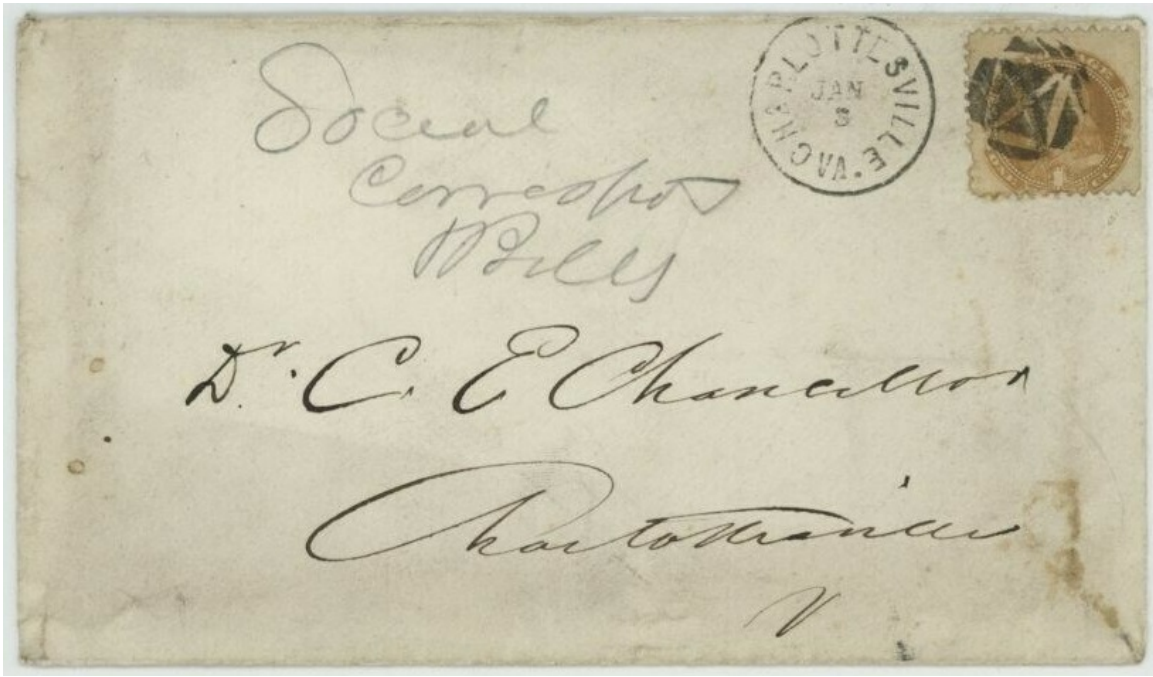
 <p>GE-C 162 [USCC 2726] Brookline, MA 1861</p>	 <p>GE-C 163 Delphos, OH 1861</p>	 <p>GE-C 164 Andora, IN 1861</p>	
 <p>GE-C 165 blue York, PA 1867</p>	 <p>GE-C 166 Waterbury, CT 1867</p>		



GE-C 167A

 <p>GE-C 167 Charlottesville, VA 1869</p>	 <p>GE-C 167A Charlottesville, VA 1/3/1870</p>		
---	--	--	--

Geometrics - Circular



GE-C 167A



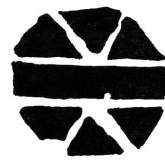
GE-C 167A
Williamsport, PA 1869



GE-C 168 blue
1857



GE-C 169
Chicago, IL 1861




GE-C 170
Bridgeport, CT 1869

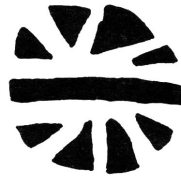


GE-C 170A
1869

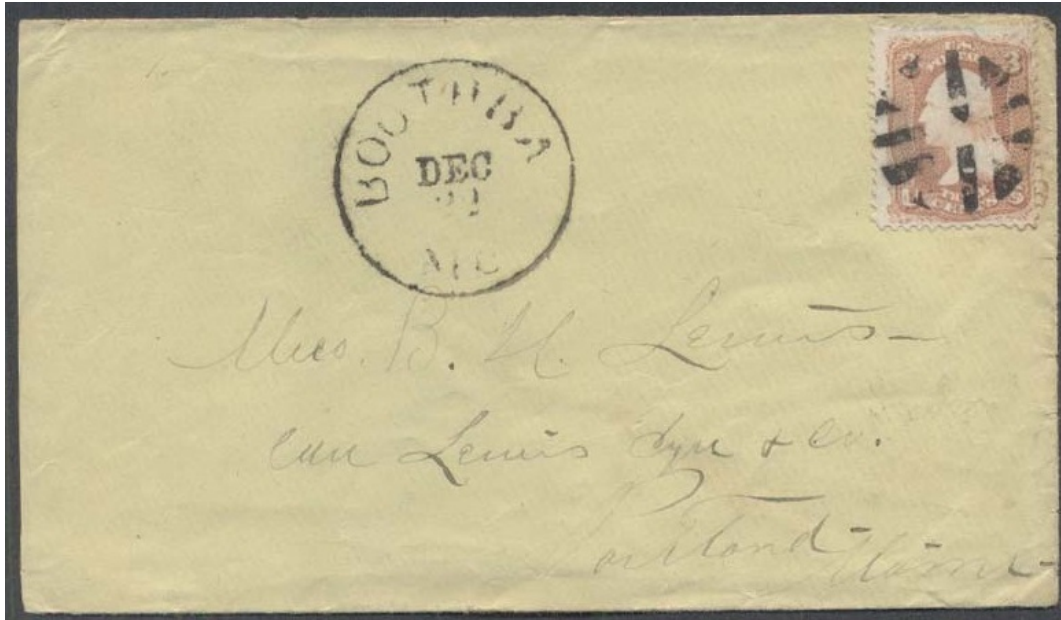
Geometrics - Circular



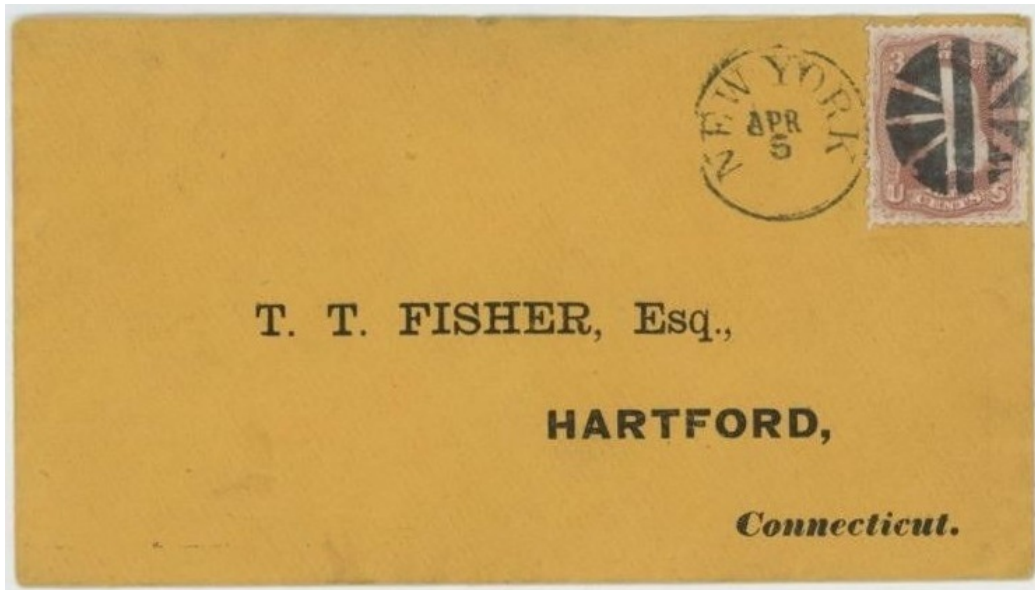
GE-C 170B
Boothbay, ME  1861



GE-C 171
New York, NY 1861



GE-C 170B



GE-C 171



GE-C 171A
1867



GE-C 171C
New York, NY  10/10/1863



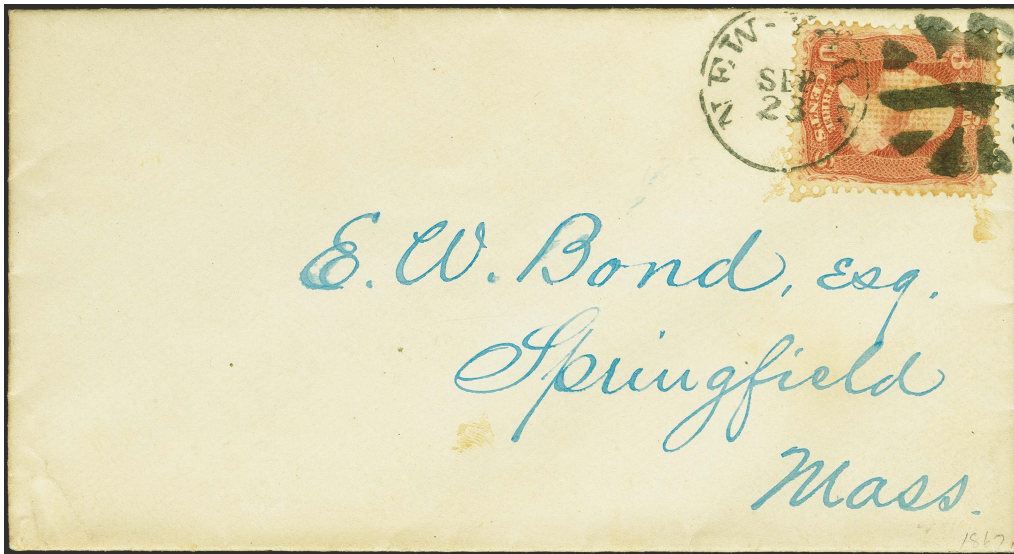
GE-C 171C



GE-C 172
New York, NY 9/23/1868



GE-C 172A
[Simpson pg137-112]
Danvers, MA



GE-C 172

Geometrics - Circular



GE-C 172B
[Simpson pg143-200]
Plymouth, NH



GE-C 172C
North Bennington, VT
1861



GE-C172D
1861



GE-C 172E
Auburn, ME 1861

















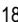

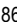




GE-E 172C



GE-C 172E

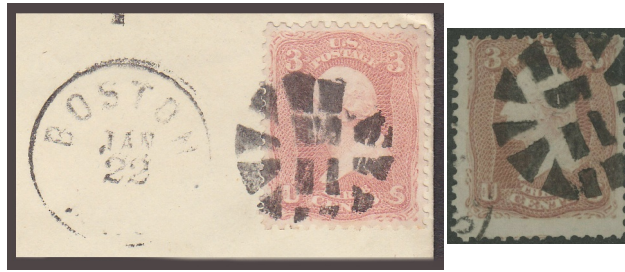
Geometrics - Circular

 <p>GE-C 173 Hudson, NY 1867</p>	 <p>GE-C 174 1869</p>	 <p>GE-C 175 blue Rutland, VT  1861</p>	 <p>GE-C 175A 1869</p>	 <p>GE-C 176 New York, NY 1861</p>
  <p>GE-C 176A 1861</p>	 <p>GE-C 176B Brookline, MA  1861</p>	  <p>GE-C 176C 1869</p>		
 <p>GE-C 177 New York, NY 1861</p>	 <p>GE-C 177A East Jaffrey, NH  1861</p>	 <p>GE-C 178 Saratoga Springs, NY  1867</p>	 <p>GE-C 178A Beaufort, SC  1861</p>	 <p>GE-C 178B Lexington, MA  1861</p>



GE-C 178A

Geometrics - Circular



GE-C 179
Boston, MA □ 1861



GE-C 179A
Auburn, ME □ 2/23/1863



GE-C 179B
Burlington, VT □ 1864



GE-C 180 blue
Oswego, NY 1861



GE-C 180.5
[Simpson pg149-293]
Freeburg, PA



GE-C 179A



Mrs. H. A. P. Torrey
Vergennes
Vermont.

GE-C 179B

Geometrics - Circular



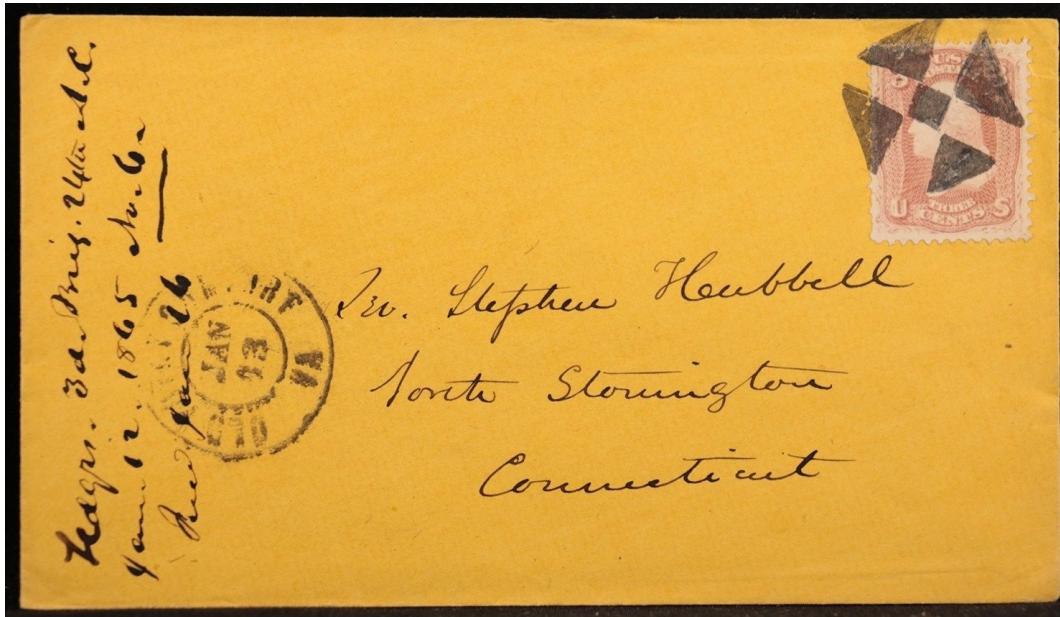
GE-C 181 [USCC 2847]
Old Point Comfort, VA 1/13/1865



GE-C 182
Suspension Bridge & Fort Plain, NY 1861-67



GE-C 181



GE-C 181

Geometrics - Circular



GE-C 182

Geometrics - Circular



two sizes: 19mm & 22mm

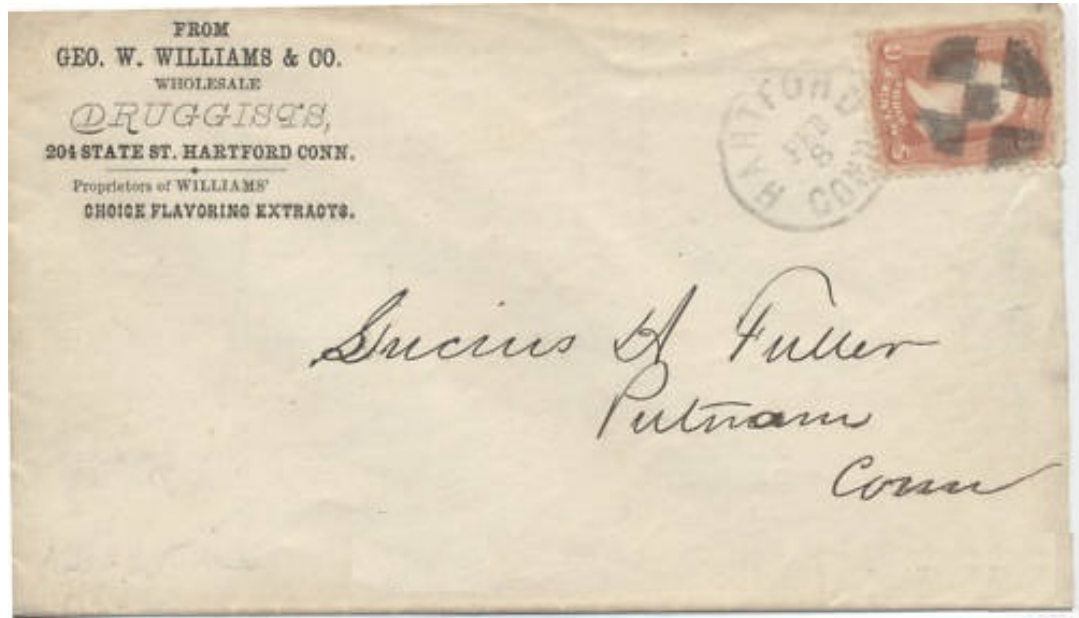
GE-C 183
Hartford, CT 1867-64/6/1870



GE-C 183



GE-C 183



GE-C 183

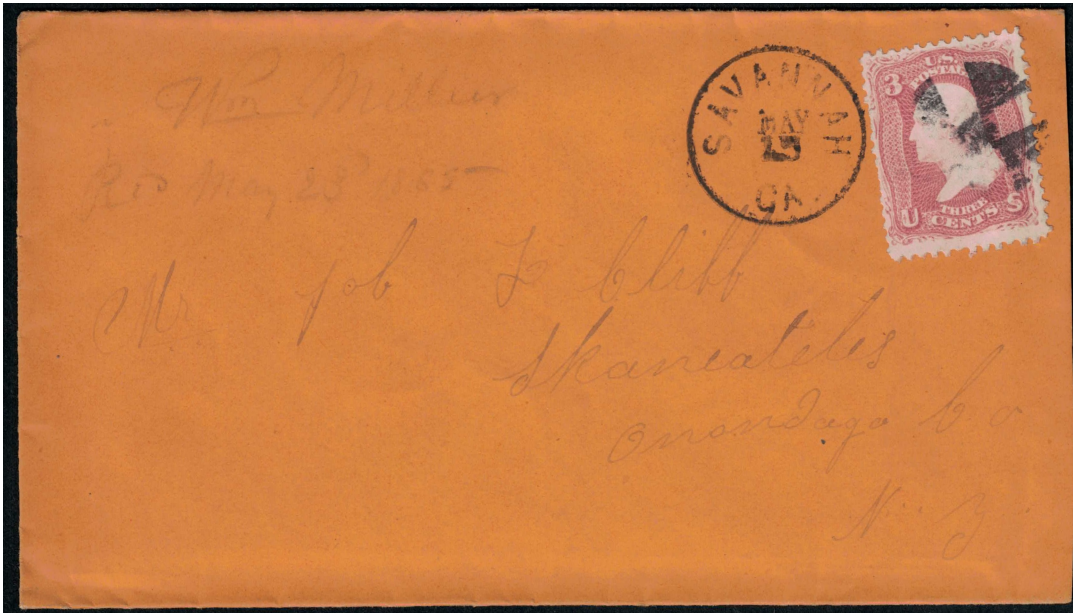


GE-C 183

Geometrics - Circular



GE-C 183A
Savannah, GA 5/15/1865



GE-C 183A

Geometrics - Circular



GE-C 184
New York, NY 11/6/1866



GE-C 184



GE-C 184A
[Simpson pg 135-77]
Louisville, KY

Geometrics - Circular



GE-C 184A



GE-C 185
Owensboro, KY 1851



GE-C 186
Salem, MA 1869



GE-C 187 blue
Munfordville, KY 1861



GE-C 187A
IA or PA? 1861



GE-C 188
Springfield, MA 1869



GE-C 189
Marion, VA 1861



GE-C 190
Saratoga Springs, NY 1861



GE-C 190A
New Bern(e), NC
2/25/1864

Geometrics - Circular



GE-C 190A



GE-C 190B
New York, NY 1861



GE-C 191
New York, NY 1861



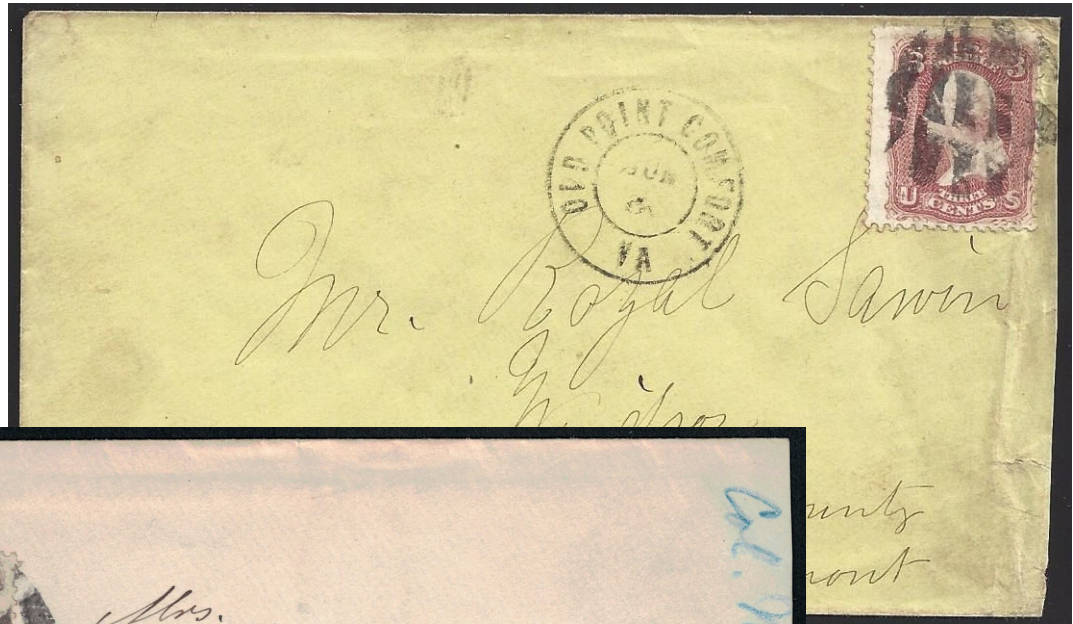
GE-C 192
New York, NY 5/22/1863



GE-C 192A
New York, NY 5/22/1863(?)



GE-C 192B
Old Point Comfort, VA 1861



GE-C 192B



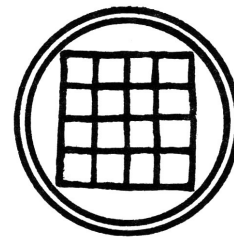
GE-C 192B



GE-C 193
Pavilion, NY □ 1861



GE-C 193A
Shelbyville, KY □ 1/6/1866



GE-C 194
New York, NY □ 1861-63



Geometrics - Circular



GE-C 195
Springfield, MA 1869



similar to FR-M7 8

GE-C 196
1869



"button"

GE-C 198
1869



GE-C 198A
[Simpson pg149-303]
Troy, PA

Geometrics - Circular



GE-C 199 [USCC 3040]
South Framingham, MA 7/14/1863



GE-C 199



GE-C 199



GE-C 199



GE-C 199



GE-C 199



GE-C 199


Geometrics - Circular



six petals

GE-R 13
1861



GE-C 200
New York, NY  1861



updated April 4, 2023 (5:09pm)