

Masonics - Group 4c



FR-M4c 1 [Simpson pg137-129; USCC 974]  
Mittineague, MA 11/17/1861



FR-M4c 1



FR-M4c 1



FR-M4c 1



FR-M4c 1



FR-M4c 1



Masonics - Group 4c



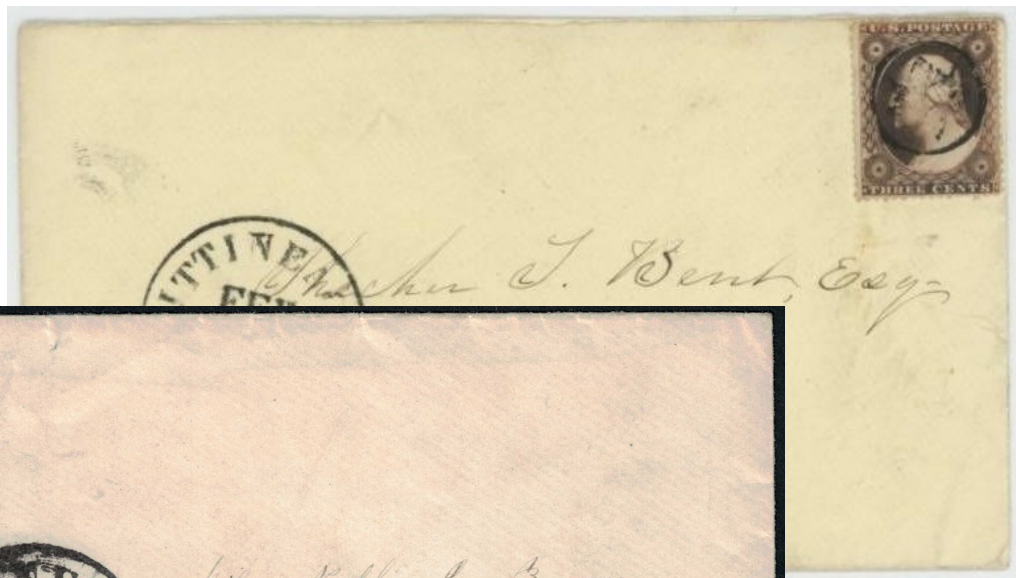
FR-M4c 2 blue  
Mittineague, MA 1861



FR-M4c 3  
Mittineague, MA 1857-61



FR-M4C 2



FR-M4c 3



FR-M4c 3

Masonics - Group 4c



FR-M4c 4 [USCC 979]  
Pontiac, MI 1861



FR-M4c 5 blue [USCC 976]  
Lonsdale, RI 12/30/1867



FR-M4c 5A black, blue [USCC 973]  
Lonsdale, RI 1861



FR-M4c 5



FR-M4c 5



Masonics - Group 4c



FR-M4c 6 [USCC 975]  
Lancaster, NY 1861-1869



FR-M4c 7  
Oriskany Falls, NY 1869



FR-M4c 7A  
Ogdenburg, NY 1861



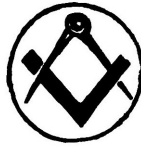
FR-M4c 8  
Sebastopol, CA 1869



FR-M4c 7A



FR-M4c 9 [USCC 966]  
1857



FR-M4c 10  
Harrisburg, PA 1851-57



FR-M4c 10A  
1862

Masonics - Group 4c



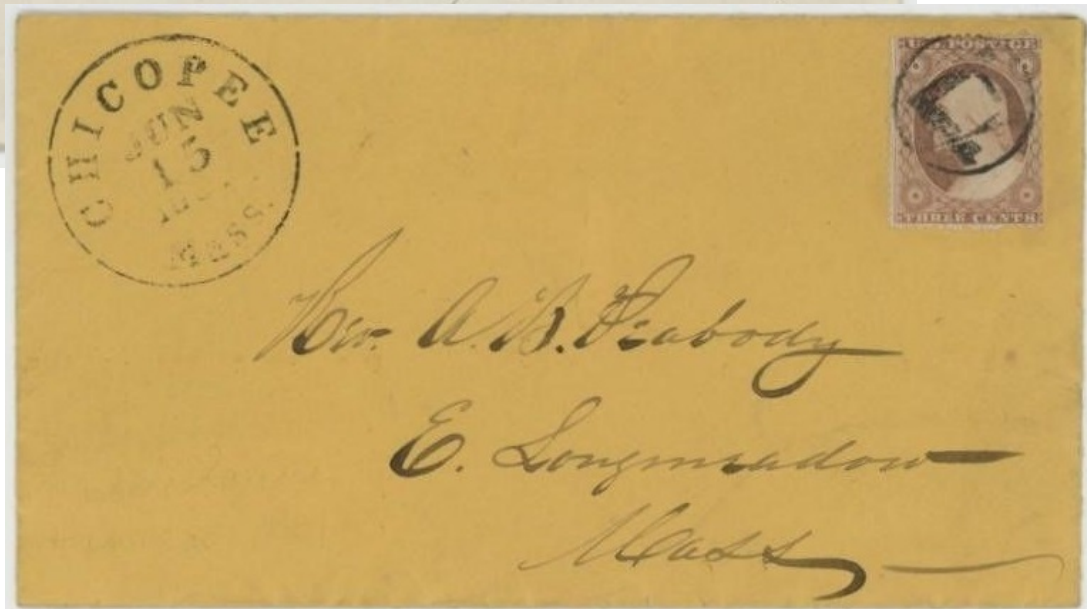
FR-M4c 11 [Simpson pg137-106; USCC 969]  
Chicopee, MA 3/12/1861-6/15/1861



FR-M4c 11



FR-M4c 11



FR-M4c 11



Masonics - Group 4c



FR-M4c 11



FR-M4c 12  
Cambridge, OH 1861

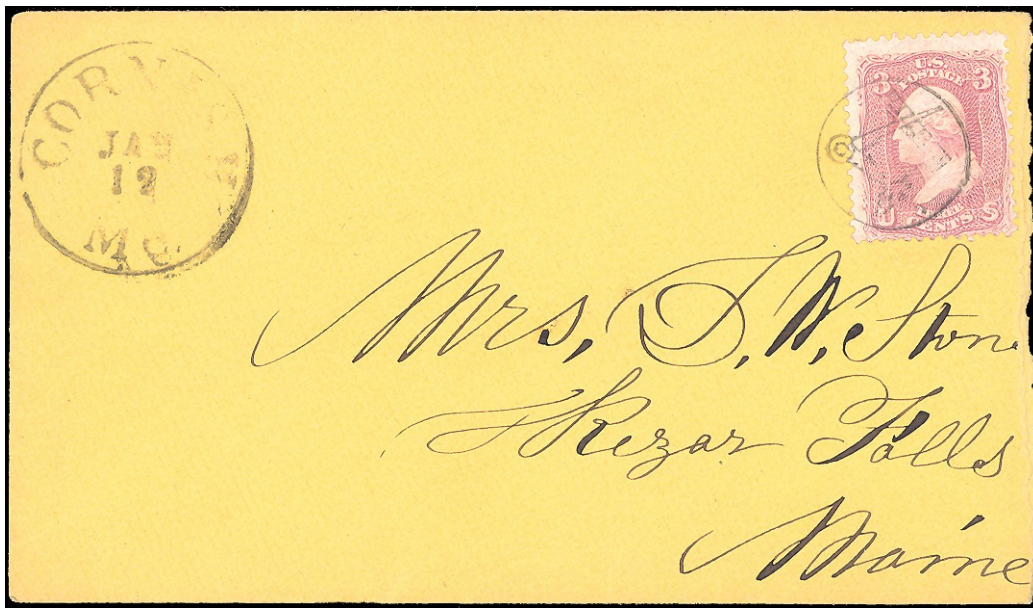


FR-M4c 12A [USCC 978]  
Cambridge, OH 1861

Masonics - Group 4c



FR-M4c 13 [USCC 967]  
Cornish, ME □ 1851-1861



FR-M4c 13



FR-M4c 14 blue [USCC 965]  
Marengo, OH □ 1861



FR-M4c 15  
Williston, VT 1861



Masonics - Group 4c



FR-M4c 16 black, red [USCC 961]  
Charlestown, NH 9/20/1869-4/1/1870?



FR-M4c 16

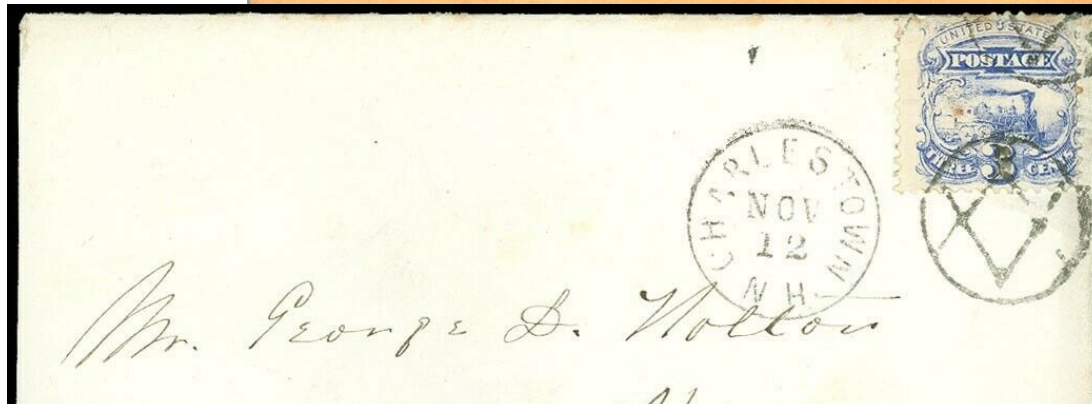


FR-M4c 16

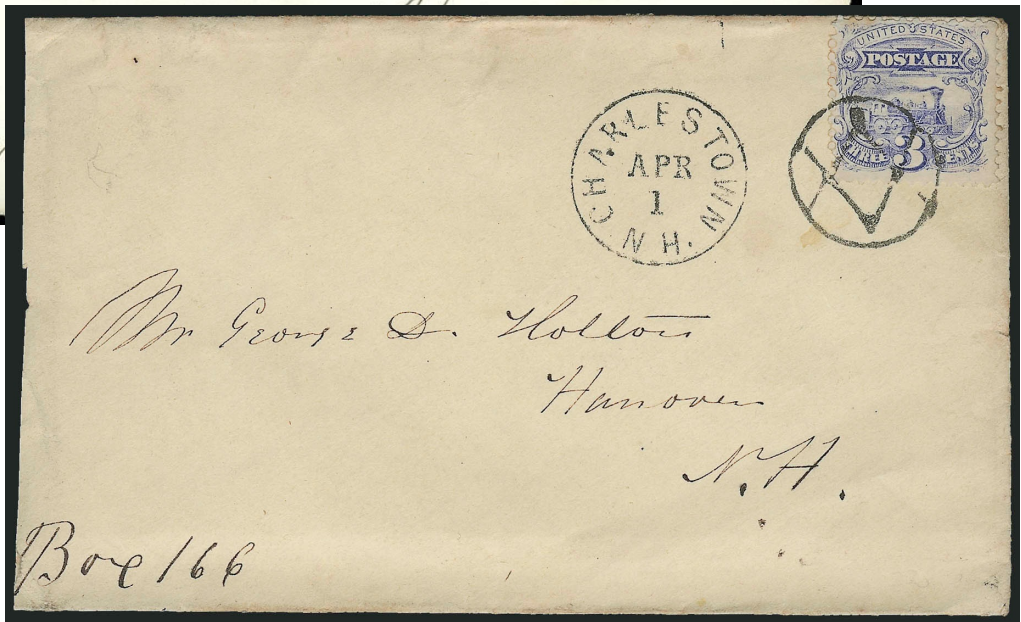




FR-M4c 16



FR-M4c 16



FR-M4c 16



FR-M4c 16A [USCC 963]  
Charlestown, NH 1861



FR-M4c 17 blue  
1867








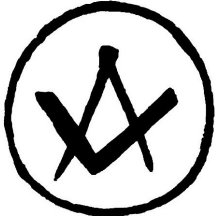
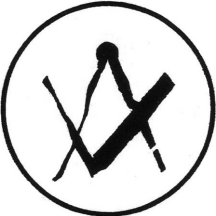
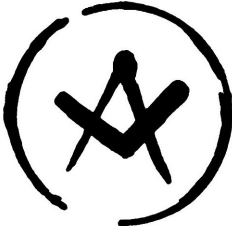


FR-M4c 17A  
1867



FR-M4c 17B  
1867



Masonics - Group 4c

|   |   |  |   |  |
|---|---|--|---|--|
|  <p><b>FR-M4c 18</b><br/>Greenfield, MA 1867</p>                   |  <p><b>FR-M4c 19</b><br/>Bethel, VT 1869</p>                   |  <p><b>FR-M4c 20</b><br/>Bethel, VT(?) 1869</p>                     |  <p><b>FR-M4c 21</b><br/>1869</p>                                  |  <p><b>FR-M4c 22</b><br/>Chelsea, VT 1869</p> |
|  <p><b>FR-M4c 23</b> [USCC 964]<br/>Copake Iron Works, NY 1861</p> |  <p><b>FR-M4c 24</b><br/>Copake Iron Works, NY<br/>1861-69</p> |  <p><b>FR-M4c 24A</b> [USCC 960]<br/>Copake Iron Works, NY 1861</p> |  <p><b>FR-M4c 24A</b> [USCC 960]<br/>Copake Iron Works, NY 1861</p> |  <p><b>FR-M4c 24B</b><br/>1861</p>            |

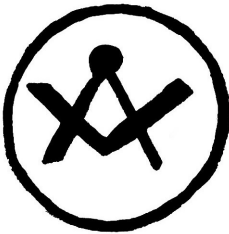

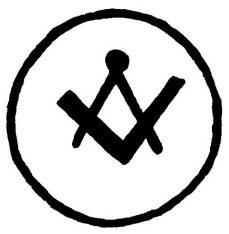




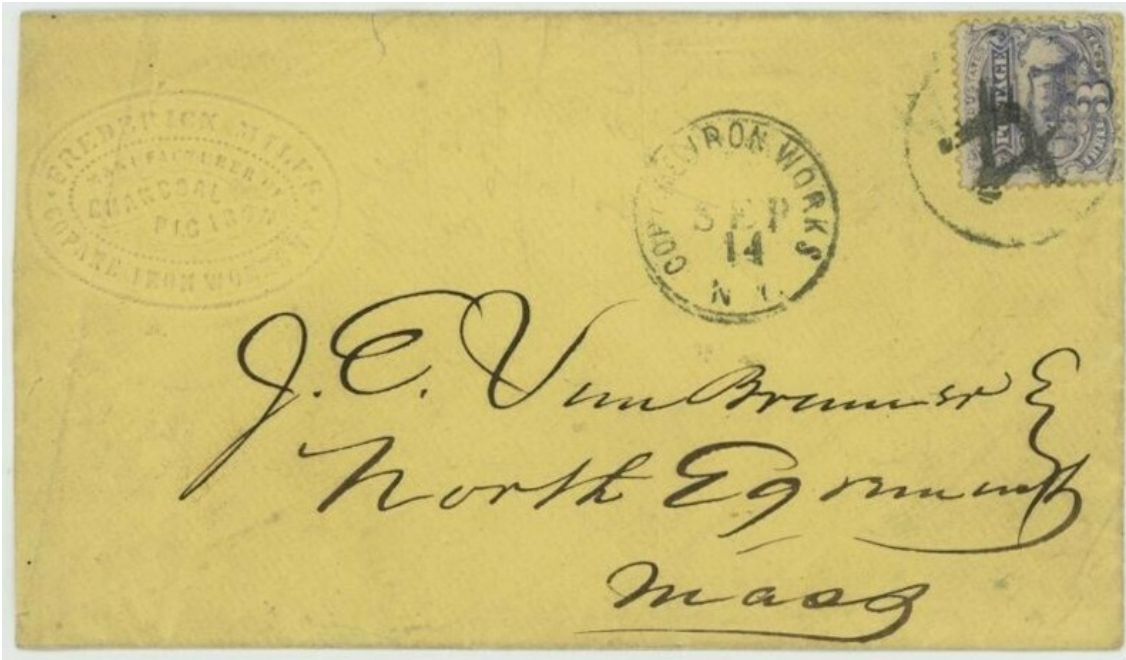
FR-M4c 23



FR-M4c 24

Masonics - Group 4c

|  |  |   |   |  |
|--|--|---|---|--|
|  <p><b>FR-M4c 25</b><br/>Copake Iron Works, NY 1861</p> |  <p><b>FR-M4c 26</b><br/>Copake Iron Works, NY 1861</p> |  <p><b>FR-M4c 27</b><br/>Copake Iron Works, NY<br/>9/14/1869</p> |  <p>two strikes<br/><b>FR-M4c 28</b><br/>1862</p> |  <p>two strikes<br/><b>SD-T 46</b><br/>1861</p> |
|--|--|---|---|--|



updated March 27, 2023 (9:32am)