

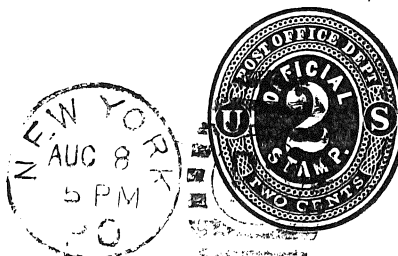
## CHAPTER V OFFICIAL STAMPED ENVELOPES

### 1875-79 OFFICIAL STAMPED ENVELOPES - 2cents

Two cents, three cents, and six cents values were prepared for the Post Office Department stamped envelopes. These official stamped envelopes were to be used only for official mail beginning on July 1, 1873.

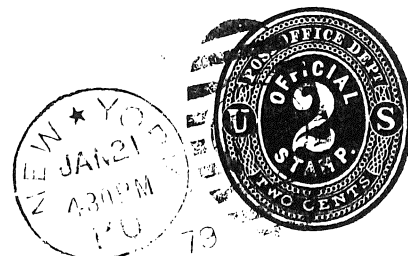
The official stamped envelopes were embossed-printed from special dies and were made by the same contractor as ordinary stamped envelope. In 1873 they were produced by George H. Reay in Brooklyn, N.Y. In October 1874, the envelope contract was awarded to Plimpton Manufacturing Company in Hartford, Conn.

IF NOT DELIVERED IN 5 DAYS,  
RETURN TO "INQUIRY OFFICE,"  
NEW YORK POST OFFICE.



**Registered Business.**

O P  
This Envelope  
Post-C



*A. J. Fisher*  
*98 Nassau St*

OFFICIAL.

This Envelope is to be used only for  
Post-Office Business.

**New York City.**

- a) August 8, 1875 black postmark New York Post Office. IF NOT DELIVERED IN 15 DAYS, RETURN TO INQUIRY OFFICE/ NEW YORK POST OFFICE - upper left.
- b) January 21, 1879 black postmark New York Post Office. Registered Business upper left, and New York City. lower right. Very few of the official stamped envelopes of this Black on White - type have been founded.  
(2 cents postage rate was local mail rate.)

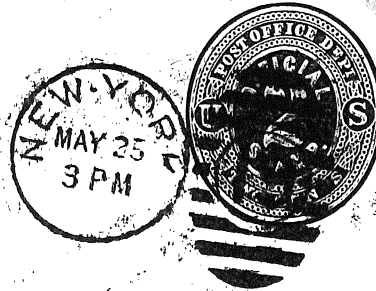
# 1876-77 OFFICIAL STAMPED ENVELOPES-2 cents

2 cents postage rate was Local Mail rate.

a

Notice to Publisher.

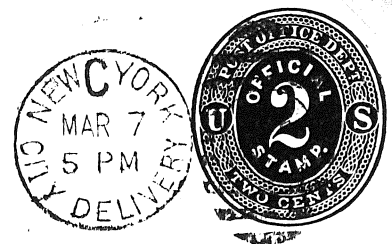
*Independent*



b

Money Order Business.

*German*



0  
This Envelope  
Post-Office

c

*Post-Office*



ty,

SEARCHERS DEP'T.,

NEW YORK POST OFFICE,

New York

OFFICIAL.

This Envelope is to be used only for  
Post-Office Business.

- Types of printed corner cards;
- a) Notice to Publisher.
  - b) Money Order Business.
  - c) None

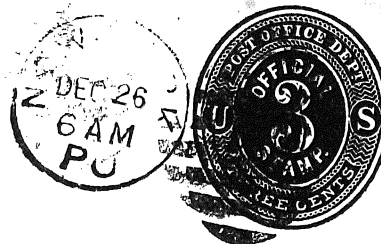
# 1874-76 OFFICIAL STAMPED ENVELOPES-3cents

Types of printed corner cards; a) M.O. DEPARTMENT, NEW YORK POST OFFICE. b) Notice to Publisher. c) None.

a

IF NOT FOUND, STATE "WHY," AND RETURN TO  
M. O. DEPARTMENT, NEW YORK POST OFFICE.

*British*



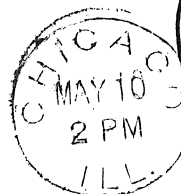
b

Notice to Publisher.

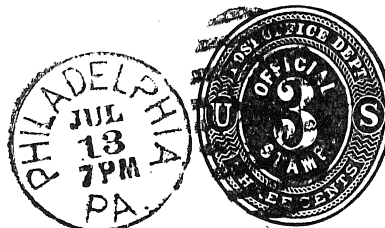
*The Index*

OF

This Envelope  
Post-Office



c



County,

*P. M.*

*New York City*

OFFICIAL.

This Envelope is to be used only for  
Post-Office Business.

Since Stamped Envelopes were produced for the use of the Post Office Department in Washington, the primary of distinguishing them is by the printed corner card, i.e. the return address of the particular office for which they were prepared.

# 1875-78 OFFICIAL STAMPED ENVELOPES-3cents

3 cents postage rate was single weight rate. The rate at the time was 3 cents per half ounce.

a

*Office of  
Sup't Railway Mail Service,  
Second Division.*



*M. L. A. R. #*

b

**Registered Business.**

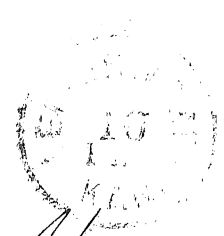


OFFICIAL

This Envelope is  
Post-Office

c

**Money Order Business.**



nty,

**Postmaster,**

*New York*

**County,**

*N.Y.*

OFFICIAL.

This Envelope is to be used only for  
Post-Office Business.

Types of printed corner cards;

- a) Office of Sup's Railway Mail Service, Second Division
- b) REGISTERED BUSINESS./ U.S. STAMPED ENVELOPES AGENCY/  
HARTFORD, Conn.
- c) Money Order Business.

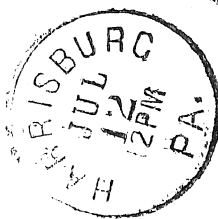


69

**1877**  
**OFFICIAL**  
**STAMPED ENVEL**  
**3 cents**

PLIMPTON ISSUE

Corner Card:  
New York & Pittsburgh  
R(ailway). P(ost). O(ffice).  
Harrisburgh, Penn.  
Unusual corner card  
on rare used envelope.



*Wm. Pauling Foster & Son*

Return to ASST CHIEF HEAD CLERK  
New York & Pittsburgh R. P. O.  
Harrisburgh, Penn.

OFFICIAL.  
This Envelope is to be used only for  
Post-Office Business.

3 cents stamped envelope was sent  
by New York & Pittsuburgh Railway  
Post Office to Postmaster in Pa.  
and postmarked in HARRISBURGH, PA/  
JUL 12 2PM (1877).

1877-79

OFFICIAL  
STAMPED ENVELOPE

3 cents

Illustrated Corner Card:

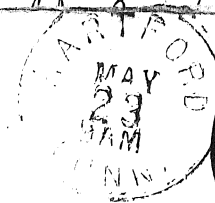


PLIMPTON ISSUE



REGISTERED BUSINESS.

U. S. STAMPED ENVELOPE AGENCY,  
HARTFORD, Conn.



Postmaster, *New York*

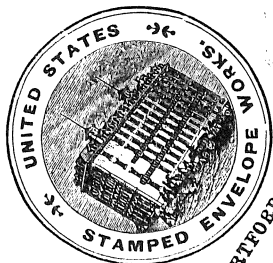
*Co*

County,

*NY*

OFFICIAL.

This Envelope is to be used only for  
Post-Office Business.



HARTFORD, Conn.

POS

Corner card:  
REGISTERED BUSINESS.  
U.S. STAMPED ENVELOPE AGENCY,  
HARTFORD, Conn.

In Oct. 1874, the envelope contact  
was awarded to Plimpton Manufacturing  
Co. of Hartford, Conn.

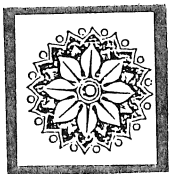
29

**1876**  
**OFFICIAL**  
**STAMPED ENVELOPE**  
**6 cents**

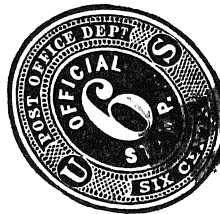
REAY ISSUE

Corner Card:  
Post-Office Department.  
Office of the Third Assistant  
P. M. General.  
Division of Dead Letters.

The symbol  
of DLO



**Post-Office Department.**  
**OFFICE OF THE THIRD ASSISTANT P. M. GENERAL.**  
**DIVISION OF DEAD LETTERS.**



Reg. No. 4270

Postmaster,

Letter B

No 736 Vol 28  
37222

N. Y. County

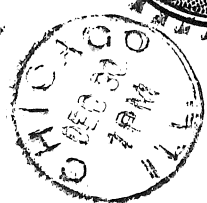
6 cents postage rate was double weight rate. The rate at the time was 3 cents per half ounce.

6 cents official stamped envelope was sent by Division of Dead Letter/ Office of Third Assistant Postmaster General and postmarked WASHINGTON, D.C. /SEP 22, (1876).

**1877**  
**OFFICIAL**  
**STAMPED ENVELOPE**  
**6 cents**

6 cents postage rate was double weight rate. The rate at the time was 3 cents per ounce.

Registered Business 6 cents official stamped envelope was sent by Chicago Post Office in Dec. 30, 1877.



COUNTY,

REGISTERED BUSINESS.

POSTMASTER,

St. Louis

MD

Copy of Reverse  
(70%)



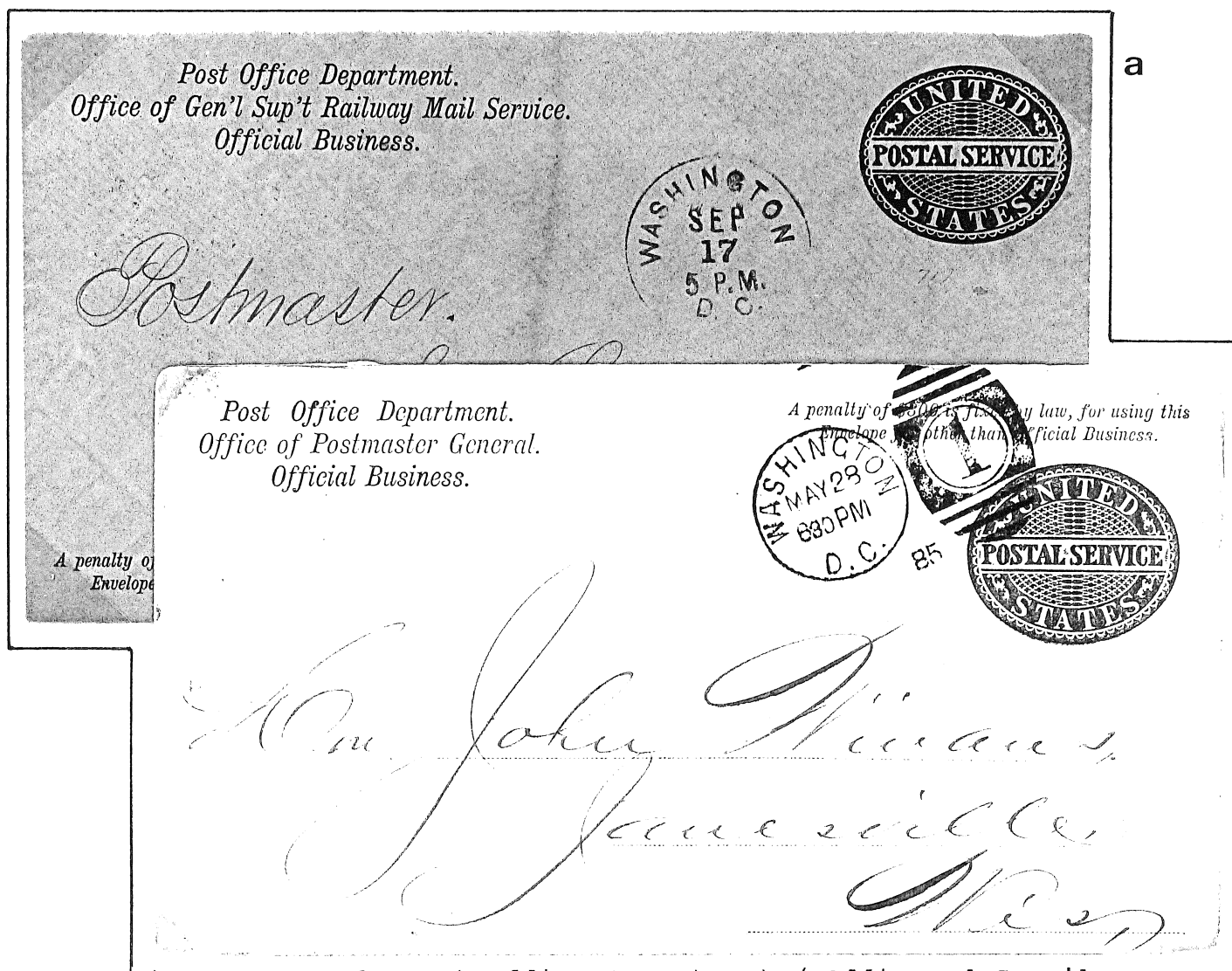
OFFICIAL.  
This Envelope is to be used only for  
Post-Office Business.

ST LOUIS, MD/ DEC 31 10 A.M./  
RECEIVED

## CHAPTER - M POSTAL SERVICE ENVELOPES

### 1878-85 POSTAL SERVICE ENVELOPES

In 1877, a special die was prepared for the Post Office Department. It read, UNITED STATES POSTAL SERVICE. There was no stated value. A penalty clause (\$300) for usage other than official business was printed on the envelope. These official stamped envelope were probably first used in July 1877.



- a) Corner card: Post Office Department./ Office of Gene'l Sup't Railway Mail Service. Postmark: WASHINGTON D.C./ SEP 17 (1878)
- b) Corner card: Post Office Department./ Office of Postmaster General. Postmark: WASHINGTON D.C./ MAY 28, 8:30 PM (18)85.

The \$300 penalty clause has always been curious to this writer that the \$300 penalty figure was frozen for over 110 years. The \$300 penalty in 1877 dollars would equal some \$5,000 or more today.

# 1878-79 POSTAL SERVICE ENVELOPES

Penalty clause-imprint

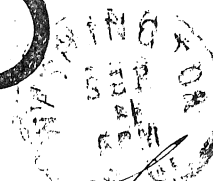
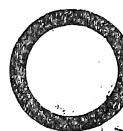
A penalty of \$300 is fixed by law, for using this Envelope for other than Official Business.

*Post Office Department.  
Office of Third Ass't Postmaster General.  
Division of Dead Letters.  
Official Business.*

*A penalty of \$300 is fixed by law, for using this Envelope for other than Official Business.*



*Post Office Department.  
Office of Third Asst Postmaster General.  
Division of Dead Letters.  
Official Business.*



*Post Office Department.  
Office of Third Ass't Postmaster General.  
Division of Dead Letters.  
Official Business.*

*A penalty of \$300 is fixed by law, for using this Envelope for other than Official Business.*



The first type of official penalty - clause envelopes, used by the Post Office Department as early as 1878. These covers sent in 1878 - 79 from the Dead Letter Office in Washington, D. C.. Locations of penalty clause are Upper Left and Lower Left.

1878

POSTAL SERVICE ENVELOPE

Corner card:  
Post Office Department,  
Office of the Postmaster General,



*R. B. Jackson, Esq.  
Superintendent  
Railway Mail Service  
New York*

*M.*

Copy of Reverse  
(70%)



Post Office Department.  
Office of the Postmaster General,  
Official Business.

A penalty of \$300 is fixed by law, for using this  
Envelope for other than Official Business.

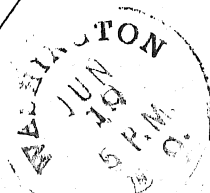
A penalty clause (\$300) for usage  
other than official business was  
also printed on the envelope. These  
official stamped envelope were pro-  
bably first used in 1877.

Postal Service envelope was sent by  
Office of the Post-mster General to Rail-  
way Mail Service in New York and post-  
marked in violet WASHINGTON, D.C./ JUN 19  
6 P.M. (1878).

1879

POSTAL SERVICE ENVELOPE

Corner Card:  
Post Office Department.  
Office of Second Ass't-  
Postmaster General.  
Official Business.



Post Office Department.  
Office of Second Ass't Postmaster General.  
Official Business.

POSTMASTER,

Hickmann COUNTY,  
Ref.

A Penalty of \$300 is fixed by law for using this  
Envelope for other than Official Business.

Postal Service envelope was  
sent by the Office of Second  
Assistant Postmaster General  
and postmarked in WASHINGTON,  
D.C./JUN 19 (1879).

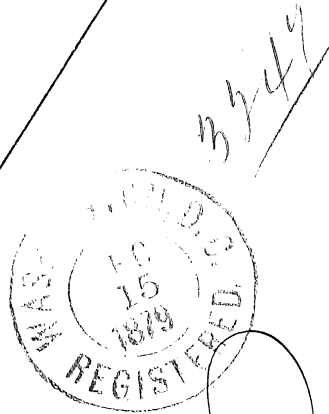
In 1877, a special die was prepared  
for the Post Office Department. It read,  
UNITED STATES POSTAL SERVICE.



1879

POSTAL SERVICE ENVELOPE

Corner Card:  
Post Office Department.  
Money-Order System.  
Official Business.  
M.O.B.



POSTMASTER, Red Hook  
Hutchins NY COUNTY,

Post Office Department.  
Money-Order System.  
Official Business.  
M. O. B.

A penalty of \$300 is fixed by law for using this  
Envelope for other than Official Business.

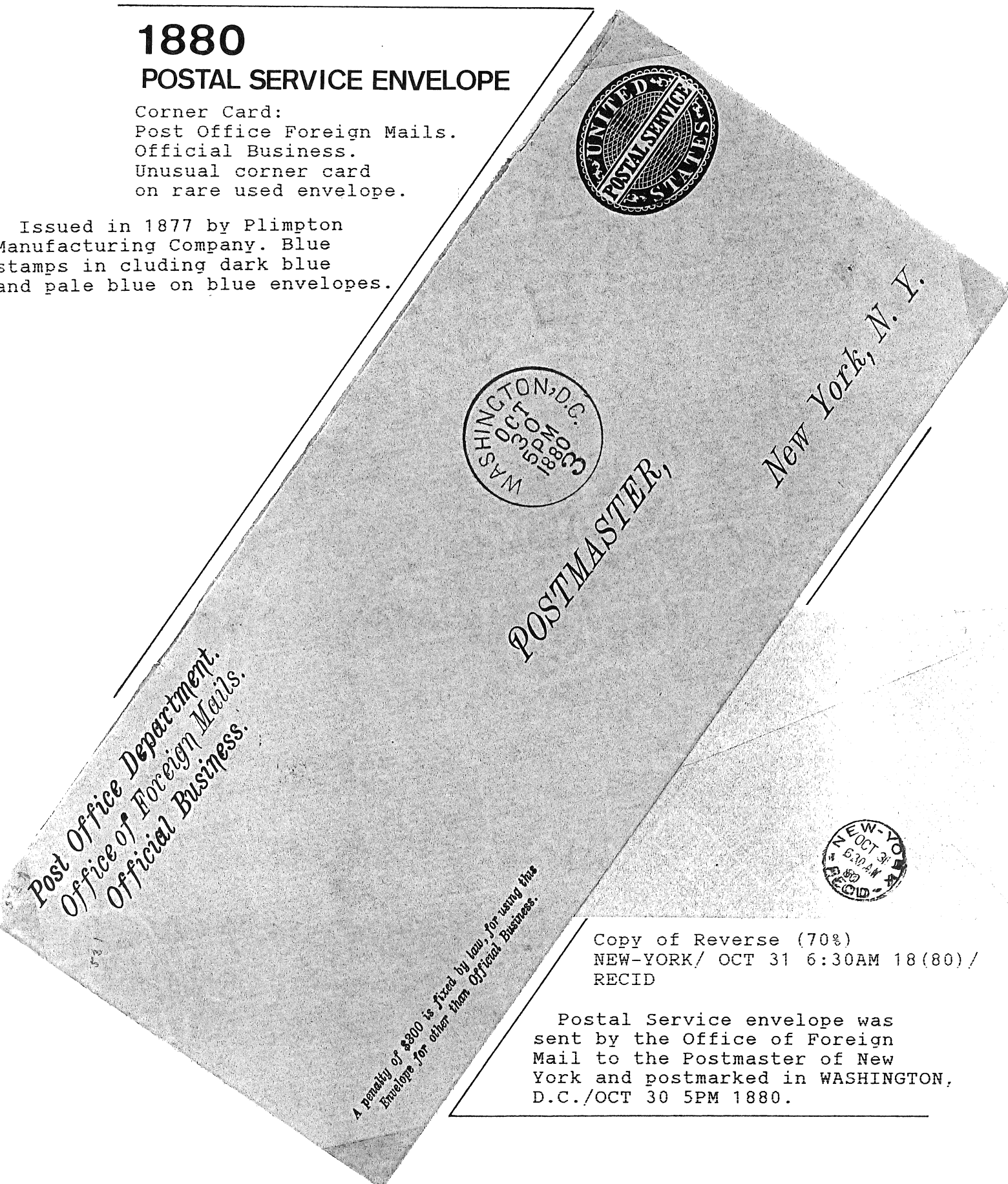
Postal Service envelope was  
sent by Money Order System to  
the Postmaster and postmarked  
WASHINGTON, D.C. / REGISTERED/  
DEC 15 1879.

# 1880

## POSTAL SERVICE ENVELOPE

Corner Card:  
Post Office Foreign Mails.  
Official Business.  
Unusual corner card  
on rare used envelope.

Issued in 1877 by Plimpton  
Manufacturing Company. Blue  
stamps in cluding dark blue  
and pale blue on blue envelopes.



Copy of Reverse (70%)  
NEW-YORK/ OCT 31 6:30AM 18(80)/  
RECID

Postal Service envelope was  
sent by the Office of Foreign  
Mail to the Postmaster of New  
York and postmarked in WASHINGTON,  
D.C./OCT 30 5PM 1880.

1883

POSTAL SERVICE ENVELOPE

Corner card:  
Post Office Department.  
Money-Order System.  
Official Business.  
M.O.B.



Postal Service envelope was sent  
by the Money Order System to Post-  
master of Windsor in Vermont and  
postmarked in REGISTERED/ NOV 24  
1883/ WASHINGTON, D.C..

REGISTERED  
NOV 24 1883  
WASHINGTON, D.C.

Post Office Department.  
Money-Order System.  
Official Business.  
M. O. B.

296

POSTMASTER,

Hartland  
Windsor County,  
Vermont

A penalty of \$200 is fixed by law for using this  
Envelope for other than Official Business.

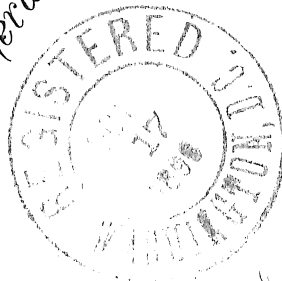
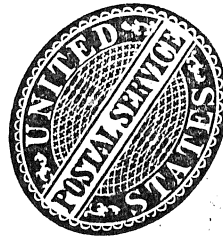
Copy of Reverse (70%)  
HARTLAND VT./ NOV 27 1883

An order from the Postmaster  
General to postmasters, date July  
18, 1884, announced that by act of  
Congress approved July 5, 1884.

1890

POSTAL SERVICE ENVELOPE

Corner Card:  
Post Office Department.  
Office of Third Ass't  
Postmaster General.  
Division of Finance.



Post Office Department.  
Office of Third Ass't Postmaster General.  
Division of Finance.  
Official Business.

2647

Washington, D.C. 375  
120. Sutton St.  
San Francisco, Cal.

REGISTERED  
OCT 24 1890  
STATION D  
SAN FRANCISCO, CAL

Copy of Reverse (70%)  
REGISTERED/ OCT 24 1890/  
STATION D/ SANFRANCISCO, CAL

Postal Service Envelope was sent  
by the Division of Finance, the  
Third Assistant Postmaster General  
and postmarked REGISTERED/ WASHINGTON  
D.C./ OCT 17 1890. Very late usage.

The use of postal service envelopes  
continued concurrently untill the end  
of April 1879, but authorized use July  
5, 1884.

10  
REGISTERED  
A penalty of \$300 is fixed by law for using this  
Envelope for other than Official Business.

## CHAPTER VII PENALTY FRANK MAIL

### 1879-80 PENALTY FRANK

The Penalty clause meant that if a post office employee used a stampless penalty envelope on private and personal business, and was caught, the employee could be fined \$300. Penalty mail may be used by private citizens or post office employee on private matters, but they may discover a new \$300 per ounce mail rate not published in the rate manual.

Penalty clause-imprint


*A penalty of \$300 is fixed by law, for using this  
Envelope for other than Official Business.*

a

**Post Office Department.** *A penalty of \$300 is fixed by law, for using this  
Envelope for other than Official Business.*

POST OFFICE AT Union Church  
**OFFICIAL BUSINESS.** *Miss*

POSTMASTER, Sandy Shivers



b

**Post Office Department.**

POST OFFICE AT GALVESTON, TEX.  
**OFFICIAL BUSINESS.**



Postmaster

New York City

N. Y.

*A penalty of \$300 is fixed by law, for using this  
Envelope for other than Official Business.*

- a) Penalty Frank Official Mail of the Post Office at Union Church Mississippi, sent in 1879 and postmarked in black UNION CHURCH, MISS./ DEC 7 (1879). The early usage.
- b) Penalty Frank Official mail of the Post Office at Galveston, Texas, sent in 1880 and postmarked in black GALVESTON TEX./ JAN 13 (1880).

# 1882 PENALTY FRANK-Foreign Destination to France

Penalty Frank Official Mail of the Post Office at Lake Linden, Michigan sent in 1882, addres to the Paris Post Office, France and two French postmarks (one indistinct, one PARIS/ JUIN 8 82).

Post Office Department,  
Post Office at Lake Linden, Mich.  
OFFICIAL BUSINESS.

To the Editor of L'Amis Colonial  
Post Office, Paris  
No. 39 de Poissonniers  
County, France  
State, France

A penalty of \$300 is fixed by law }  
for using this card on other than }  
official business. }

Obverse

Post Office Lake Linden, Mich.  
State Mich.

Sir: Pursuant to instructions from the Postmaster General,  
I beg leave to inform you that your paper, addressed to  
Olivier Jacques Pierre Boudreau  
Pierre Boudreau  
is not taken out, but remains dead in this office. You will please  
discontinue the same.

Reason: S. Deschamps P. M.  
Robinson

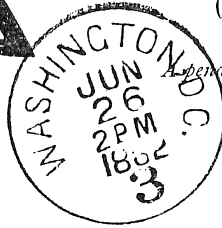
Sending postmark:  
LAKE LINDEN, MICHIGAN, / MAY 24, 1882  
Receiving postmark:  
PARIS/ JUIN 8 82

Penalty clause-imprint

A penalty of \$300 is fixed by law }  
for using this card on other than }  
official business. }

# 1882-84 PENALTY FRANK

K. B. "Held for postage," "misdirected," or "unclaimed" domestic letters, inclosed in envelopes bearing the name and address of the writer, are not sent to the Dead Letter Office to be opened, but are returned direct to the senders. For further information upon this subject, see Sections 437, 456 and 458 of the Postal Regulations, which will be shown you upon application to your postmaster.



## Post Office Department.

OFFICE OF THE THIRD ASSISTANT P. M. GENERAL.  
DIVISION OF DEAD LETTERS.

*A penalty of \$300 is fixed by law, for using this Envelope for other than Official Business.*



## Post Office Department.

OFFICE OF THE THIRD ASSISTANT P. M. GENERAL.  
DIVISION OF DEAD LETTERS.

*A penalty of \$300 is fixed by law, for using this Envelope for other than Official Business.*

N. B. "Held for postage," "misdirected," or "unclaimed" domestic letters, inclosed in envelopes bearing the name and address of the writer, are not sent to the Dead Letter Office to be opened, but are returned direct to the senders. For further information upon this subject, see Sections 437, 456 and 458 of the Postal Regulations, which will be shown you upon application to your postmaster.



## Post Office Department.

OFFICE OF THE THIRD ASSISTANT P. M. GENERAL.  
DIVISION OF DEAD LETTERS.

*A penalty of \$300 is fixed by law, for using this Envelope for other than Official Business.*

*John Taylor  
Trenton*

*A. J.*

The symbols appears on official covers sent from the United States Dead Letter Office in Washington, D.C.. The official covers used return undeliverable and unmailable letters their senders from 1860's until well into the 20th century.

# 1884-85 PENALTY FRANK

a) Enclosed with each registered letter was salmon -color RETURNED REGISTERED RECEIPT penalty franked official postal card, upon which the addressee's signayure was obtained before the card was returned to the sender. These cards are the ancestor of Today's return receipt cards.

*When the registered letter or parcel accompanying this card is delivered, the Postmaster will require signature to the receipt on the other side, also on his record of registered deliveries, and mail this card without cover to address below.  
A penalty of \$300 is fixed by law for using this card for other than official business.*

**Post Office Department.**  
OFFICIAL BUSINESS. **Post Office at** \_\_\_\_\_

**RETURN TO:** \_\_\_\_\_

Name: John P. ...

Stamp here name of post office  
and date of delivery.

**a**  
From Stanford, MT  
To Choteau, MT  
1885

*The Postmaster making up Registered Letters, &c., for dispatch, will fill up the other side of this Bill, and write the name of his Post Office, County, and State in the blank address on this side.  
The Postmaster receiving this Bill in Registered Package will at once compare entries with letters, &c., inclosed; make entries on record of registered matter received; stamp postmark below; sign this Bill on other side, noting any errors, and return it to the mailing Post Office without cover.  
A penalty of \$300 is fixed by law for using this card on other than official business.*

**Post Office Department.**  
OFFICIAL BUSINESS. **Post Office at** \_\_\_\_\_

**RETURN TO:** \_\_\_\_\_

**b**  
From Meriden, NH  
To Hartland, VT  
1885

*The Postmaster making up Registered Letters, &c., for dispatch, will fill up the other side of this Bill, and write the name of his Post Office, County, and State in the blank address on this side.  
The Postmaster receiving this Bill in Registered Package will at once compare entries with letters, &c., inclosed; make entries on record of registered matter received; stamp postmark below; sign this Bill on other side, noting any errors, and return it to the mailing Post Office without cover.  
A penalty of \$300 is fixed by law for using this card on other than official business.*

**Post Office Department.**  
OFFICIAL BUSINESS. **Post Office at** \_\_\_\_\_

**RETURN TO:** \_\_\_\_\_

**c**  
From Kingston, NM  
To Lake Valley, NM  
1884

**Postmaster at** \_\_\_\_\_  
**County of** \_\_\_\_\_  
**State of** \_\_\_\_\_

Stamp here name of Post Office  
and date of receipt.

LAKE VALLEY, NEW MEXICO.

b) & c) Begining in 1879, registered letters enclosed in large envelopes had gray or light blue printed REGISTERED BILL penalty franked official postal cards used in place of paper registry bills that to be returned in separate envelopes.



# 1888-94 PENALTY FRANK

(a) & (b) - Penalty clause envelope used in private correspondences.



(c) - 10 cents postage stamp tied by Salem, Massachusetts on registered cover from Post Office. Penalty clause mail covers found with stamps affixed make up only a very small percentage of all used penalty clause mail covers in existence.

# 1892-94 PENALTY FRANK

Penalty Frank Official Mails of the Post Office - New York International M.O.B. Section sent in 1892-4. Foreign Money Orders in the United States date from 1869.

a	<p><b>Post Office Department.</b>  <b>POST OFFICE AT NEW YORK, N. Y.</b>  <b>OFFICIAL BUSINESS.</b></p> <p><b>BELGIUM</b></p> <p>NOV 24 1 30 PM 1892</p> <p><b>M. O. BUSINESS.</b>  <i>This envelope can lawfully be used only by an Officer of the United States on Official Business of the Government. The use of it to avoid payment of postage on private matter of any kind is punishable by a fine of \$300.</i></p>
b	<p><b>Post Office Department.</b>  <b>POST OFFICE AT NEW YORK, N. Y.</b>  <b>OFFICIAL BUSINESS.</b></p> <p><b>NETHERLANDS.</b></p> <p>NOV 24 1 30 PM 1892</p> <p><b>M. O. BUSINESS.</b>  <i>This envelope can lawfully be used only by an Officer of the United States on Official Business of the Government. The use of it to avoid payment of postage on private matter of any kind is punishable by a fine of \$300.</i></p>
c	<p><b>Post Office Department</b>  <b>POST OFFICE AT NEW YORK, N. Y.</b>  <b>OFFICIAL BUSINESS.</b></p> <p><b>DANISH.</b></p> <p>NOV 24 1 30 PM 93</p> <p><b>M. O. BUSINESS.</b>  <i>This envelope can lawfully be used only by an Officer of the United States on Official Business of the Government. The use of it to avoid payment of postage on private matter of any kind is punishable by a fine of \$300.</i></p>
d	<p><b>Post Office Department.</b>  <b>POST OFFICE AT NEW YORK, N. Y.</b>  <b>OFFICIAL BUSINESS.</b></p> <p><b>GERMAN.</b></p> <p>39360</p> <p><b>M. O. BUSINESS.</b>  <i>This envelope can lawfully be used only by an Officer of the United States on Official Business of the Government. The use of it to avoid payment of postage on private matter of any kind is punishable by a fine of \$300.</i></p> <p>NEW YORK JUL 5 6 30 PM 94</p> <p>Philipp Marx          Notary Public          300 E. 101st St.          New York N.Y.</p>

Handstamp - a) BELGIUM, b) NETHERLANDS. c) DANISH. d) GERMAN.

# 1898 PENALTY FRANK-Postal Cards

Penalty Frank Official Postal Cards' mails sent in 1898.

FORM B.—22.

**a**

Post Office Department,  
OFFICIAL BUSINESS.  
A penalty of \$300 is fixed by law for using this card for other than Official Business.

BOSTON  
JAN 5  
6-PM  
18 98  
MASS.

PLYMOUTH  
JAN 4  
9:30AM  
1898  
MASS.

Mr. Blodgett Muritt & Co.

8/18

No. 1543.

Post Office,

**b**

SALT LAKE CY. UTAH. OFFICIAL BUSINESS.  
AUG 18 5:30 PM '98  
A penalty of \$300 is fixed by law for using this Card for other than Official Business.

R  
5-2591

Mr. Dr. J. Geo Odell  
S. I. O. O. Co.

No. 3547.

Post Office,

AMERICA  
NOV 12 6PM '98  
A penalty of \$200 is fixed by law for using this card to avoid the payment of postage on white matter.

Mr. Maynard Child  
89 State St  
Boston  
Mass.

5-1075

**c**

Form's number of postal cards and postmarks;  
a) B-22, JAN 4 9:30AM 1898/PLYMOUTH, MASS  
b) No.1543, AUG 18 5:30PM (18)98/ SALT LAKE CY, UTAH  
c) No.3547, NOV 12 6PM (18)98/ PALMER, MASS.

# 1902 PENALTY FRANK

Imprint three lines Penalty clause.

a

Post Office Department.  
POST OFFICE, NEW YORK, N. Y.  
**OFFICIAL BUSINESS**  
Return to Money Order Division,  
If not delivered in 10 days.

NEW YORK, N. Y.  
DEC 11 2:30 PM  
1902

A penalty of \$300 is fixed by law for using  
this envelope to avoid payment of postage on  
private matter.

13

Ms M. J. Childs  
Natick  
Mass

b

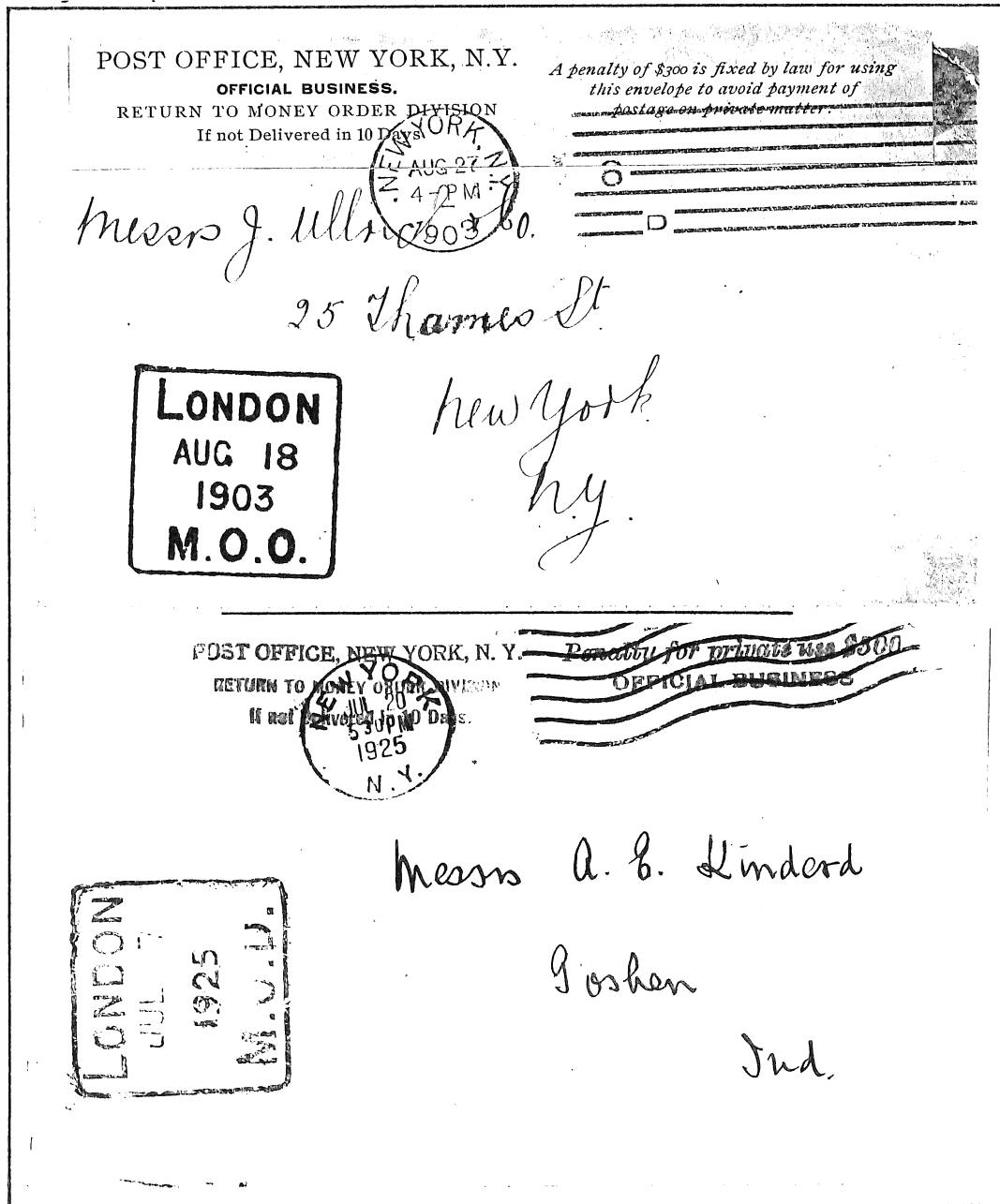
Ms M. J. Childs  
Natick  
Middlesex  
Mass.

LONDON  
APR 1  
1902  
M.O.O.

- a) Penalty Frank Official Mail of Money Order Division of the New York Post Office sent in 1902, handstamped Great Britain, and postmarked NEW YORK, N.Y./ DEC 11 2:30 PM 1902.  
b) Enclosed cover of the Money Order Office in London. It came through New York Post Office.

# 1903-25 PENALTY FRANK

Cover sent from the Money Order Office in London to accompany in New York. It came through the Post Office in New York. New York added penalty clause label. It was sent from London on Aug. 18, and arrived in New York City on Aug. 18, 1903.



Cover sent from the Money Order Division in London to a company in Indiana. It came through the Post Office in New York City. When the post office in London sent it out, they normally did not add postage. New York added penalty clause handstamp. It was sent from London on July 7, and arrived in New York on July 20, 1925.

## 1907 PENALTY FRANK-HAWAII

The Kingdom of Hawaii adopted its first constitution in 1840. In 1894 islanders, desiring a more stable government, established the Republic of Hawaii. On July 7, 1898 Hawaii was, by a joint resolution of Congress, annexed to the United States. The islands became a U. S. territory on June 14, 1900, and all the islanders became American citizens. The State of Hawaii was created August 21, 1959.

POST OFFICE DEPARTMENT  
POST OFFICE, HONOLULU, HAWAII  
OFFICIAL BUSINESS

(2-1)

HONOLULU, HAWAII  
MAR 8  
5:30 P.  
1907

PENALTY FOR PRIVATE USE TO  
AVOID PAYMENT OF POSTAGE, \$300.

Postmaster, *Springfield*

County, *Miss*

M. O. B.

Penalty Frank Official Mail of Honolulu, Hawaii Post Office sent in 1907 and postmarked HONOLULU, HAWAII/ MAR 8 5:30 1907. Imprint returned address - POST OFFICE DEPARTMENT/ POST OFFICE, HONOLULU, HAWAII/ OFFICIAL BUSINESS.

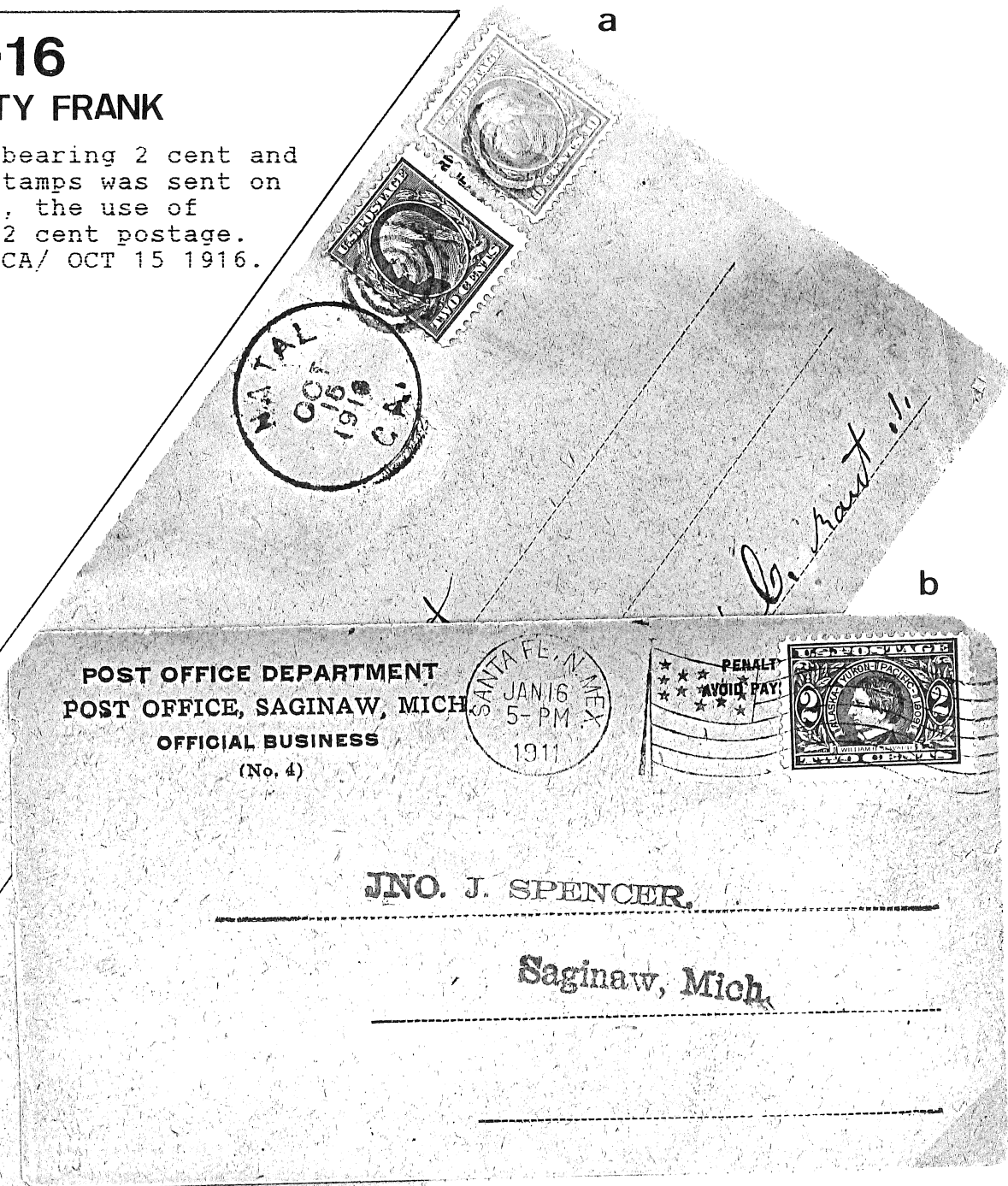
The first really standardized format was that the two-line penalty clause in the upper right corner, used to a greater or lesser extent for some sixty years.

PENALTY FOR PRIVATE USE TO  
AVOID PAYMENT OF POSTAGE, \$300

1911-16

## PENALTY FRANK

a) This envelope bearing 2 cent and 10 cent postage stamps was sent on official business, the use of registered mail 12 cent postage. Postmark: NATAL, CA/ OCT 15 1916.



b) This envelope bearing 2 cent postage stamp, was sent on private usage. Postmark: SANTAFE, N.MEX./ JAN 16 5-PM 1911.



# 1918-30 PENALTY FRANK-Postal Card

Return Receipt - Penalty Mail Postal Cards  
Insurance for parcel post was introduced in 1912.

**Post Office Department**  
OFFICIAL BUSINESS

**REGISTERED ARTICLE**  
No. 124

**INSURED PARCEL**  
No. \_\_\_\_\_

Return to State Bank

Street and  
or Post Office

**Post Office Department**  
OFFICIAL BUSINESS

**REGISTERED ARTICLE**  
No. 716

**INSURED PARCEL**  
No. \_\_\_\_\_

Return to St. Louis

Street and  
or Post Office

a

PENALTY FOR PRIVATE USE  
TO AVOID PAYMENT OF  
POSTAGE, \$300.

POSTMARK OF DELIVERING  
OFFICE

AND DATE OF DELIVERY

b

**Post Office Department**  
OFFICIAL BUSINESS

**RETURN TO:**  
Edward Cofka  
2035 Ave A  
Council Bluffs

**Postmaster**  
or \_\_\_\_\_  
(Railway Postal Clerk.)

**Street and No.** Edward Cofka

**Post Office** Council Bluffs

**State** Iowa

c

Postmark of Office or R. P. O.  
which returns this card

BROADWATER  
NEBT  
DEC 31  
1930

and DATE of RECEIPT

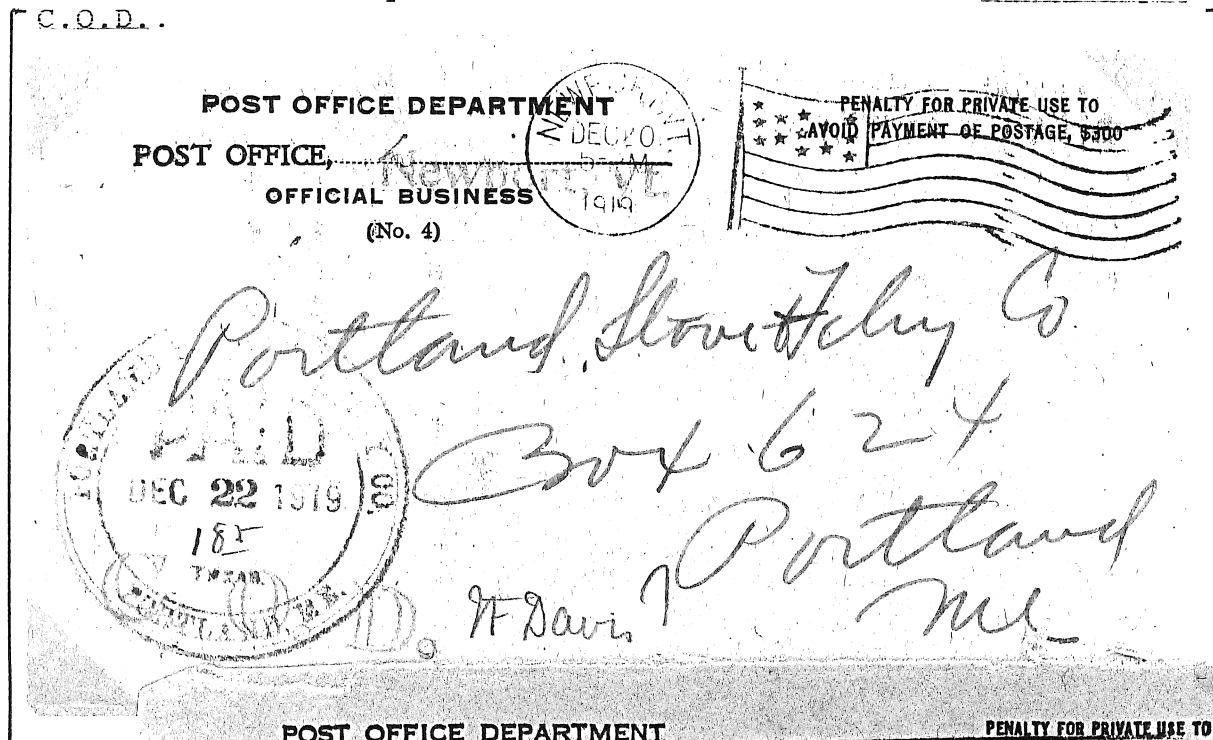
G P O The Dispatching Postmaster or Railway Postal Clerk must address this card for return to himself. 05-7712

- a) Return Receipt Postal Card sent in 1918 and postmarked WAUSUN, MINN/ OCT 18 PM 1918.
- b) Return Receipt Postal Card sent in 1921 and postmarked NEWLISBON WIS./ APR 22 2PM 1921.
- c) Return Receipt Postal Card sent in 1930 and postmarked BROADWATER NEBT./ DEC 31 1930.

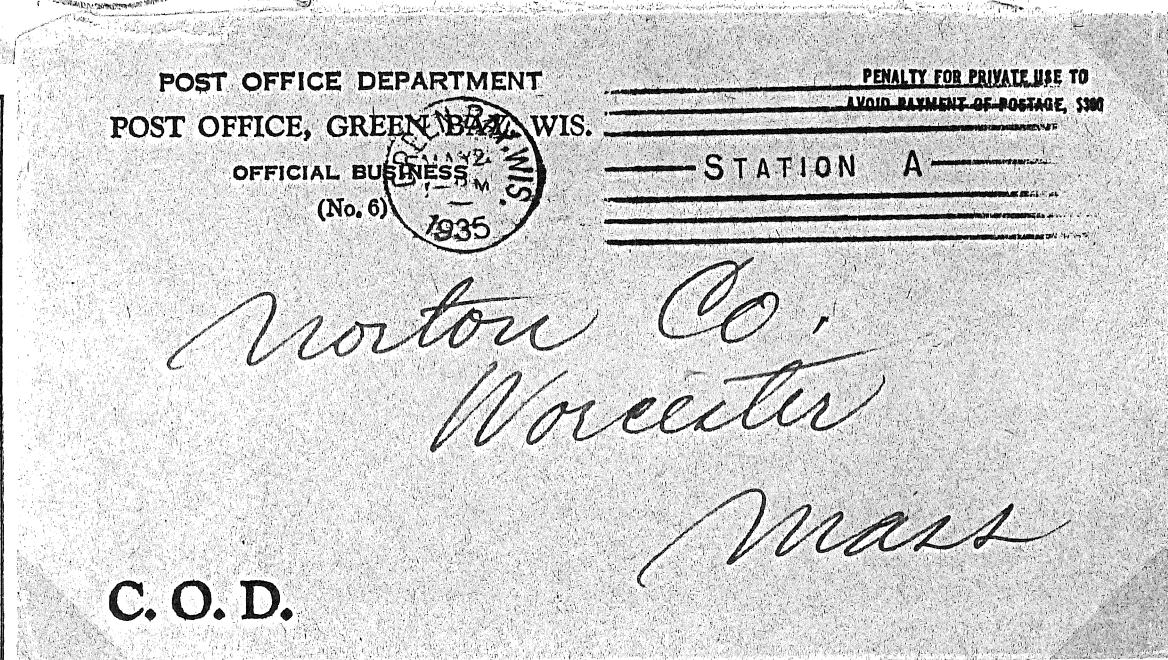


# 1919-35 PENALTY FRANK - C.O.D.

Penalty Frank Official Mail of the Post Office of C.O.D. (Collect on Delivery) division of Newport, VT sent in 1919. Collect-On-Delivery in the U.S. dates from 1913. Handstamped C.O.D..



a



b

Penalty Fran Official Mail of the Post Office of C.O.D. (Collect On Delivery) Division at Green Bay, Wiscinsin, sent in 1935, postmarked GREEN BAY, WIS/ MAY 2 1-PM 1935 and imprinted C.O.D..

C.O.D. - a service for high-volume mailers or individual customers who may mail an article for which they have not received payment.

# 1930 PENALTY FRANK - FREE UNDER CONVENTION

Penalty claused and FREE UNDER CONVENTION  
Imprint

FREE UNDER CONVENTION  
PENALTY FOR PRIVATE USE TO  
AVOID PAYMENT OF POSTAGE, \$300

Returned address imprint

POST OFFICE DEPARTMENT, U. S. A.  
ASST SUP'T DIV'N OF INTERNATIONAL POSTAL SERVICE  
NEW YORK, N. Y.  
OFFICIAL BUSINESS  
(U. S. SEA POST SERVICE)

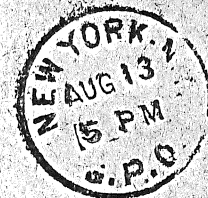
POST OFFICE DEPARTMENT, U. S. A.  
ASST SUP'T DIV'N OF INTERNATIONAL POSTAL SERVICE  
NEW YORK, N. Y.  
OFFICIAL BUSINESS  
(U. S. SEA POST SERVICE)

FREE UNDER CONVENTION  
PENALTY FOR PRIVATE USE TO  
AVOID PAYMENT OF POSTAGE, \$300

Mr Eeverett Erle,

2303 Bush Street.

SAN FRANCISCO. CALIF.



Penalty Frank official mail of Post Office Department -  
Assistant Suport Division (Sea Post Service) of Inter-  
national Postal Service, New York, New York State, sent in  
1930 and postmarked in NEW YORK, N.Y./AUG 13 5PM/G.P.O./1930.

# 1932 PENALTY FRANK

From Fourth Assistant postmaster General/ Div. of Equipment  
And Supplies in Washington, D.C. to CARMINE Postmaster in  
Texas.

(Form 1567)

SEND THIS ORDER TO THE FOURTH ASSISTANT POSTMASTER GENERAL, DIVISION OF EQUIPMENT AND SUPPLIES

## REQUISITION FOR RUBBER AND STEEL STAMPS ONLY

**IMPORTANT.**—To insure prompt delivery of stamps when ordering, follow carefully the instructions contained in the List of Postal Supplies. **DO NOT ORDER POSTAGE STAMPS ON THIS FORM.**

Date **September 27, 1932.**

Post Office **CARMINE**

County **FAYETTE**

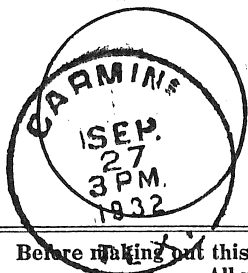
State **TEXAS**

### ATTENTION

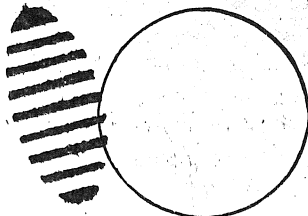
STATE HERE:  
Postmaster's yearly salary **\$1400.**  
No. regular clerks, main off. **1**  
No. regular clerks, stations **0**  
No. city carriers **0**  
No. rural carriers **1**  
No. of stations—Numbered **0**  
Lettered **0**  
Named **0**

DO NOT MAKE MORE THAN ONE IMPRESSION IN ANY SPACE PROVIDED HEREON.

POSTMARKING STAMP  
HERE



RECEIVING STAMP  
HERE



MONEY ORDER STAMP  
HERE



REGISTRY STAMP  
HERE



Before making out this requisition carefully read the instructions printed on the back hereof and be governed accordingly.  
All requisitions irregularly submitted will be returned for corrections and completion.

ITEM NUMBER.	STOCK STAMP NUMBER.	QUANTITY ON HAND.	QUANTITY WANTED.	QUANTITY ALLOWED.
-----------------	---------------------------	----------------------	---------------------	----------------------

WORDING.

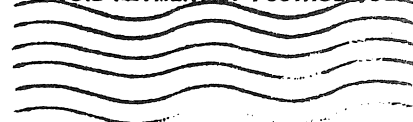
Post Office Department

FOURTH ASSISTANT POSTMASTER GENERAL  
DIVISION OF EQUIPMENT AND SUPPLIES

OFFICIAL BUSINESS



PENALTY FOR PRIVATE USE TO  
AVOID PAYMENT OF POSTAGE \$300.



Postmaster

Carmine,

Texas.

(If more than one sheet is used, sign last sheet only.)

Postmaster.

*John A. Heyand*

POST OFFICE DEPARTMENT

P. O.

*Yermo, Calif.*  
(State)

OFFICIAL BUSINESS

(No. 47-D)

PENALTY FOR PRIVATE USE TO AVOID  
PAYMENT OF POSTAGE, \$300.

This envelope to be used Exclusively  
for registered mail. If transmitted by  
ordinary mail use envelope No. 53-D

Postmasters Must Indicate Nature of Inclosure  
by Marking an X in One of the Squares Below.

- ☐ Deposit—Surplus Funds
- ☐ Stamp Requisition Remittance
- ☐ Special Request Envelope Remittance
- ☐ Other \_\_\_\_\_

7-1-1932

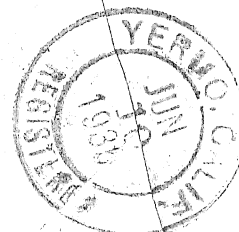
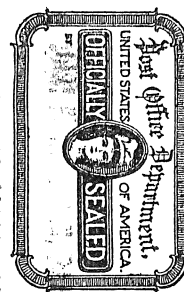
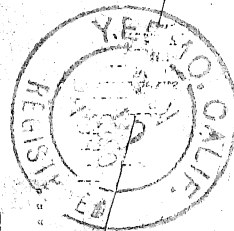
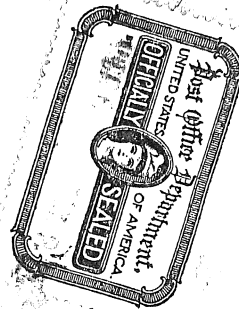
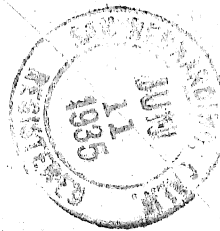
21493

~~CENTRAL ACCOUNTING POSTMASTER~~

*Bank of America*  
*San Bernardino, Calif.*

1935 PENALTY FRANK

Post Office Seals—certified by Yermo Postmaster John  
Wallaran (Postmaster rubber stamp).  
Postmark: VERMO, CALIF./JUN 10 1935/REGISTERD  
Received Postmark: SAN BERNARDINO, CALIF/JUN 11  
1935/REGISTERED



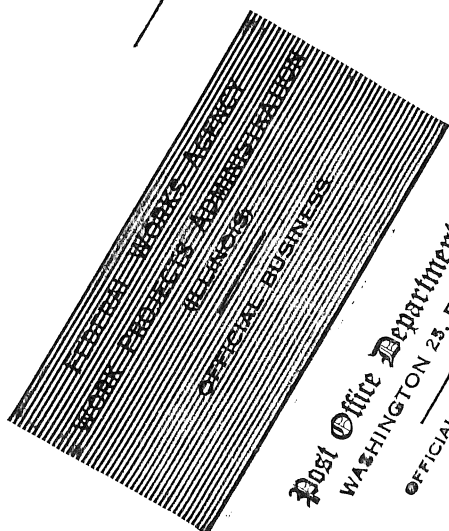
# 1946 PENALTY FRANK

Overprinted Corner Card:  
Post Office Department  
WASHINGTON 25 D.C./  
OFFICIAL BUSINESS

PENALTY FOR PRIVATE USE TO AVOID  
PAYMENT OF POSTAGE \$200



MR. WILLIAM T. NORRIS  
RELEAST,  
MAINE.



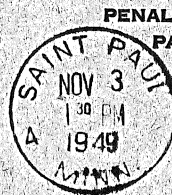
Post Office Department  
WASHINGTON 25, D. C.  
OFFICIAL BUSINESS

Penalty Frank Official Mail of  
the Post Office Department sent  
in 1946 and postmarked WASHINGTON,  
D.C.,/ APR 11 2-PM 1946.

# 1949-53 PENALTY FRANK-PMGC

1944 postal regulations required that penalty envelope indicate its source: PMGC for those obtained via Postmaster General Contract.

POST OFFICE DEPARTMENT  
POST OFFICE, **Saint Paul, Minn.**  
DEAD LETTER BRANCH  
OFFICIAL BUSINESS  
(No. 21)



PENALTY FOR PRIVATE USE TO AVOID  
PAYMENT OF POSTAGE, \$300  
(PMGC)



REVE  
ST H

COLLECT FIVE CENTS  
ON DELIVERY

*Bonded collectors*  
*450 1/2 Main St*

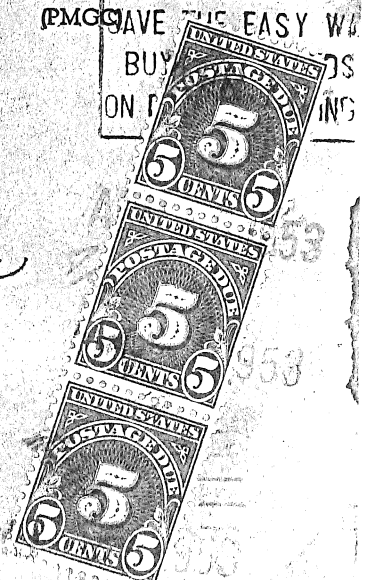
card  
charge

POST OFFICE DEPARTMENT  
P. O., LOS ANGELES 52, CALIF.  
DEAD LETTER BRANCH  
OFFICIAL BUSINESS

MAR 27 1953



PENALTY FOR PRIVATE USE TO AVOID  
PAYMENT OF POSTAGE, \$300  
(PMGC)



COLLECT FIVE CENTS  
ON DELIVERY

*Edward C Jones*  
*Gen Del*  
*Chicago*  
*Ill.*

A letter without the sender's  
card address on the envelope is  
charged with this fee for return.

- a) Dead Letter Office of the Post Office of Saint Paul, Minn. collected postage due of 5 cents. (Nov. 3 1949)  
Dead Letter Branch fee - 5 cents: Act of June 7, 1935.
- b) Dead Letter Office of the Los Angeles Post Office, CA. collected postage due of 15 cents. (March 12, 1953)

Penalty clause & (PMGC) imprint

PENALTY FOR PRIVATE USE TO AVOID  
PAYMENT OF POSTAGE, \$300  
(PMGC)



79

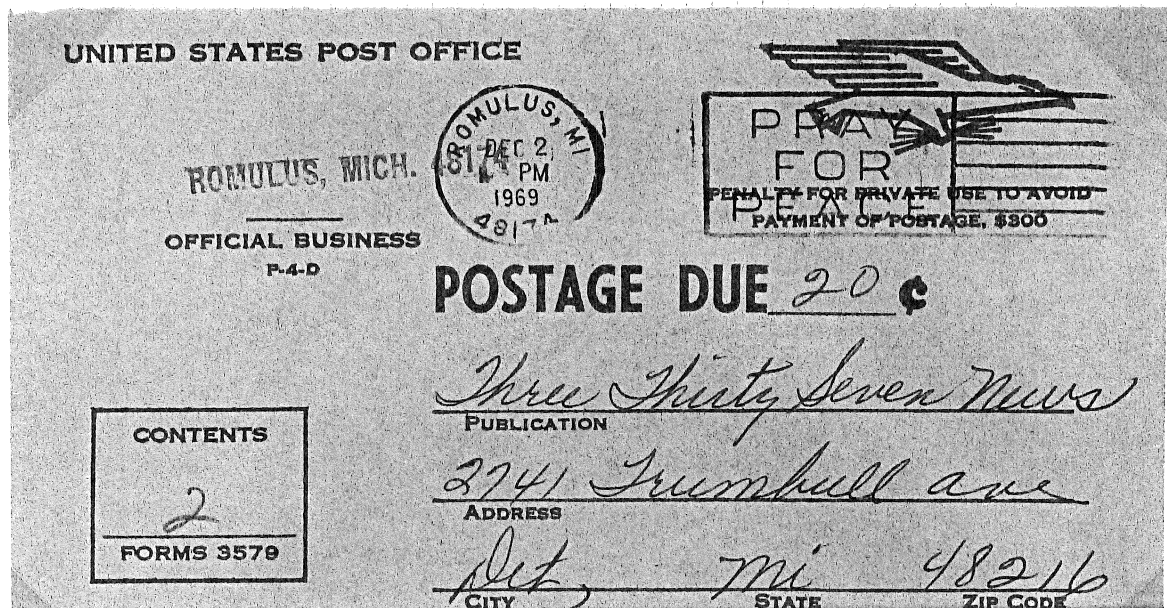
PENALTY FOR PRIVATE USE TO AVOID  
PAYMENT OF POSTAGE, \$300  
(GPO)

Penalty frank official mail of the Post Office - Indianapolis, Ind. sent in 1950, and collected fee of forwarding postage fee 6 cents (3 cents Postage Due Stamp X 2).

Penalty frank official mail of the Post Office - New York. N.Y., sent in 1950, and collected fee of postage fee 14 cents(1 cent, 3cents and 10 cents Postage Due Stamp).

# 1969-70 PENALTY FRANK - Flying Eagle

Flying Eagle indicia & Penalty clause - imprint



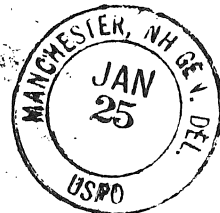
UNITED STATES POST OFFICE

OFFICIAL BUSINESS  
P-186

F.A. BROPOS  
R.P. 1st, Manchester, N.H.  
03070 USA



PENALTY FOR PRIVATE USE TO AVOID  
PAYMENT OF POSTAGE, \$300



The flying eagle indicium was adopted in 1968. The flying eagle indicium, because of its relatively short period of use.

- a) Penalty Frank Official Mail of the Post Office - Romulus, MI sent in 1969 and collected fee of postage fee 20 cents.
- b) Penalty Frank Official Mail of the Post Office - Manchester, Delaware sent in Jan. 25, 1970.



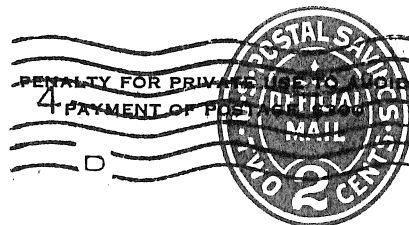
## CHAPTER-VIII

# PENALTY OVERPRINTED STAMPED ENVELOPES

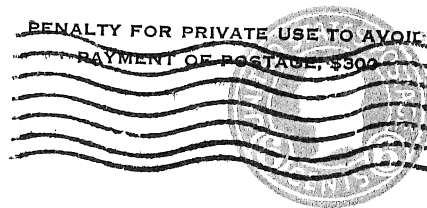
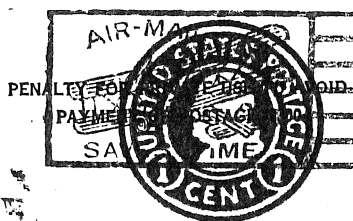
Penalty clause-overprint

PENALTY FOR PRIVATE USE TO AVOID  
PAYMENT OF POSTAGE, \$300

Type I



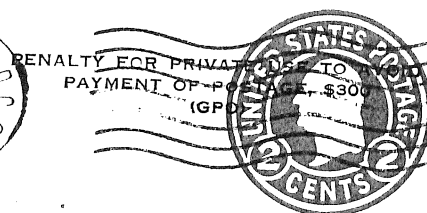
The use of Penalty overprints to dispose of the remainders of the Postal Savings envelope seemed to be successful, therefore by mid-1915 regular stamped envelopes began to appear with the Penalty overprint.



Penalty clause-overprint

PENALTY FOR PRIVATE USE TO AVOID  
PAYMENT OF POSTAGE, \$300  
(GPO)

Type Ia

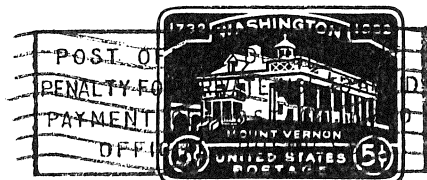


1944 postal regulations required that each penalty envelope indicate its source: GPO for those printed by the Government Printing Office.

Penalty clause-overprint

POST OFFICE DEPARTMENT  
PENALTY FOR PRIVATE USE TO AVOID  
PAYMENT OF POSTAGE, \$300  
OFFICIAL BUSINESS

Type II



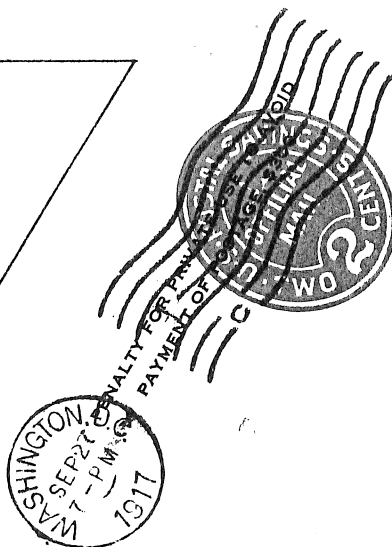
During the last half of 1942, a new type of overprint appeared. The wording POST OFFICE DEPARTMENT/ PENALTY FOR PRIVATE USE TO AVOID/ PAYMENT OF POSTAGE, \$300/ OFFICIAL BUSINESS was enclosed in rectangular frame.

107

# 1917 PENALTY FRANK

In 1914 or 1915 obsolete Postal Savings Mail official stamped envelopes were overprinted with a penalty cause and used by the Post Office Department.

Overprinted Corner Card:  
Post Office Department  
WASHINGTON/  
OFFICIAL BUSINESS



Type I

Post Office Department  
WASHINGTON  
OFFICIAL BUSINESS

Penalty Frank Official mail of  
Post Office Department sent in  
1917 and postmarked WASHINGTON,  
D.C./ SEP 27 7PM 1917.

1922

## PENALTY FRANK

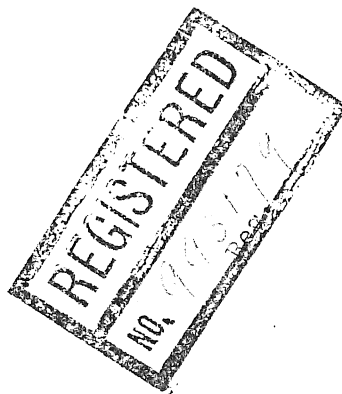
Handstamped Corner Card:  
Post Office Department,  
Philatelic Stamp Agency,  
Division of Stamp,  
Washington, D.C.

Type I



Miss Bratrice Barbasse,  
78 Oak Street,  
Gloversville,  
New York.

Copy of Reve  
(70%)



Postmark:  
WASHINGTON, D.C./  
JUL 27 1922/ REGISTERED

Penalty Frank Official Registered  
Mail of Division of Stamps/ Phi-  
latelic Agency sent in July 27,  
1922 from Washington, D.C. to  
Gloversville, N.Y.. Registered  
mail service required addition  
postage- 12 cents.

Post Office Department  
Philatelic Stamp Agency  
Division of Stamp  
Washington, D.C.

# 1928-29 PENALTY FRANK

Type I

Penalty Frank Official Mail of Division of Dead Letter Of the First Assistant Postmaster General sent in 1928, and collected postage fee three cent (bearing 1 cent & 2 cent postage stamps).

Post Office Department  
FIRST ASSISTANT POSTMASTER GENERAL  
DIVISION OF DEAD LETTERS  
AND DEAD PARCEL POST  
OFFICIAL BUSINESS



PENALTY FOR PRIVATE USE TO AVOID  
PAYMENT OF POSTAGE



*Mr. John R. Brundley*  
*Massachusetts*

COLLECT THREE CENTS

Post Office Department  
FIRST ASSISTANT POSTMASTER GENERAL  
DIVISION OF DEAD LETTERS  
AND DEAD PARCEL POST  
OFFICIAL BUSINESS



PENALTY FOR PRIVATE USE TO AVOID  
PAYMENT OF POSTAGE



*Mr. W. Lewis Gorman*  
*329 S. Sandusky Ave.*  
*Bucyrus Ohio*

COLLECT THREE CENTS  
ON DELIVERY

A letter without the sender's card address on the envelope is charged with this fee for return

Penalty Frank official Mail of Division of Dead Letter of the First Assistant Postmaster General sent in 1929 and collected fee of three cent (bearing 3 cent postage-due stamp).

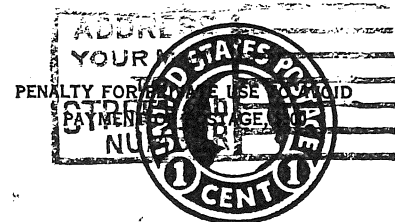
Dead Letter Branch Fee - 3 cent: Act of April 24, 1920.

## 1929-30 PENALTY FRANK

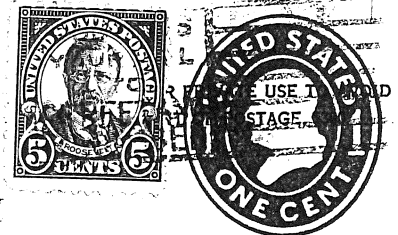
Type I

Mid 1915 began to appear with penalty clause regular stamped envelopes. This penalty frank official mail of the Third Assistant Postmaster General/ Division of Stamp/ Philatelic Agency sent in 1929 and postmarked in WASHINGTON, D.C./ OCT 5 PM 1929.

**Post Office Department**  
THIRD ASSISTANT POSTMASTER GENERAL  
DIVISION OF STAMPS  
PHILATELIC AGENCY  
WASHINGTON, D. C.  
  
OFFICIAL BUSINESS



**Post Office Department**  
THIRD ASSISTANT POSTMASTER GENERAL  
DIVISION OF STAMPS  
PHILATELIC AGENCY  
WASHINGTON, D. C.  
  
OFFICIAL BUSINESS



Mr. Hans Holdheim,  
Berlin W. 62, Lutherstr, 10  
Berlin, Germany.

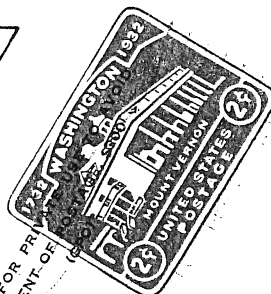
Foreign Destination/ Usage to Berlin, Germany  
Penalty Frank Official Mail of the Third Postmaster General/ Division of Stamps/ Philatelic Agency sent to Germany and postmarked in WASHINGTON, D.C. 6/ AUG 1 4:30PM 1930.

This envelope bearing 5 cent postage stamp, was sent to Germany. 5 cent was foreign postage rate. Prepayment was required for official foreign mail.

# 1944 PENALTY FRANK

Imprinted Corner Card:  
Post Office Department  
WASHINGTON 25, D.C./  
OFFICIAL BUSINESS

Department Permit Number -  
3 was used at Washington, D.C..



Type Ia

POSTMASTER,  
Adams,  
New York.

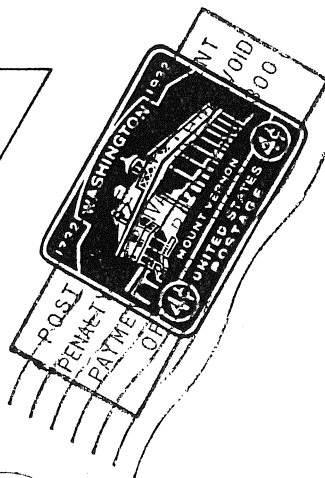
Post Office Department  
WASHINGTON 25, D. C.  
OFFICIAL BUSINESS

Penalty Frank Official Mail of  
the Post Office Department sent  
in 1944 and postmarked in red  
WASHINGTON, D.C./ DEC 19 7PM 1944/  
DEPARTMENT PERMIT No.3.

# 1945 PENALTY FRANK

Type-Written Corner Card:  
WAR DEPARTMENT  
Postal Officer  
APO 91, U.S.Army/  
Official Business

Postmark:  
U.S.ARMY POSTAL SERVICE/  
MAY 23 1945/ #91



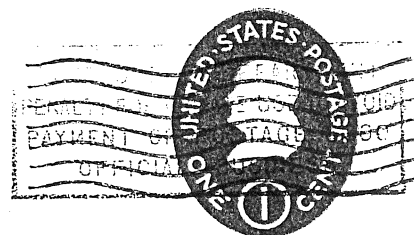
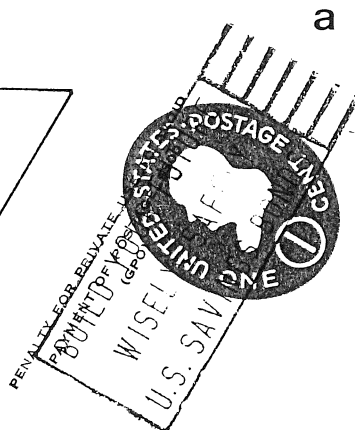
Postmaster  
New York,  
New York

WAR DEPARTMENT  
Postal Officer  
APO 91, U.S. Army  
Official Business

Penalty frank mail of A.P.O.  
(Army Post Office) #91 sent in  
May 23, 1945 was in Mondena, Italy  
This kind of penalty frank was used  
by the postmasters of many post offi  
outside of Washington. The Postal  
Officer at A.P.O. was the postmaster  
for minitary unit.

# 1953-56 PENALTY FRANK

a) Penalty Frank Official Mail of the Philatelic Agency, sent in 1953 and postmarked WASHINGTON, D.C.16/ JUL 17 8:30PM 1953.



Type Ia

*The Colorado Alumnus  
Boulder, Colo.*

**Post Office Department**  
ASSISTANT POSTMASTER GENERAL  
BUREAU OF FINANCE  
DIVISION OF STAMPS AND PHILATELY  
WASHINGTON 25, D. C.  
OFFICIAL BUSINESS

Type II


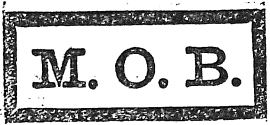
b) Penalty Frank Official Mail of the Postmaster at Lancaster, South Carolina, sent in 1956, postmarked LANCASTER, S.C./ JUN 11.30AM 1956, and handstamped POSTAGE DUE 3 CENTS.



## **CHAPTER IX OFFICIAL MAIL IN U.S. POSSESSIONS**

### **1899 DEPARTMENT OF POSTS OF CUBA PENALTY FRANK**

After the U. S. battleship Maine was destroyed in Havana harbor with a loss of 266 lives in February, 1898, the United States demanded the withdrawal of Spanish troops from Cuba. The Spanish - American War followed. With the peace treaty of Dec. 10 1898, Spain relinquished Cuba to the United States in trust for its inhabitants. On Jan. 1 1899, Spanish authority was succeeded by U. S. military rule which lasted until May 20, 1902, when Cuba, as a republic, assumed self-government.

DEPARTMENT OF POSTS OF CUBA, POST OFFICE HAVANA. <b>CUBAN EXCHANGE OFFICE.</b>  (No. 1-L.)	OFFICIAL BUSINESS. PENALTY FOR PRIVATE USE \$300.  99
POSTMASTER, <i>Stapleton</i>	<i>NY</i>
	

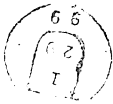
The Department of Posts of Cuba penalty clause envelope, postmarked HAVANA/ AM JUN 5 (1899)/ CUBA, and sent official business to the New York Postmaster in United States of America.

Imprinted returned address - DEPARTMENT OF POSTS OF CUBA,/ POST OFFICE HAVANA,/ CUBAN EXCHANGE OFFICE.

# 1899 CUBA OFFICIAL MAIL

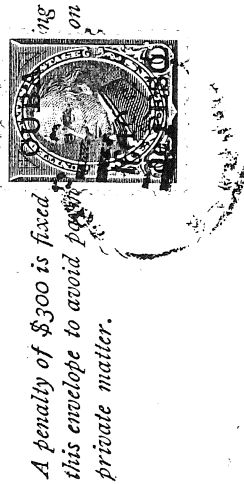
Source registered cover with 10c de peso postage stamp on official business penalty envelope - New York, N.Y. struck out and Havana, Cuba written in Misaddressed Michigan; try Minn. written in backstamped.

REGISTERED DIVISION.  
FEB 1 1899  
MINNEAPOLIS, MINN.



Copy of Reverse (70%)  
REGISTERED DIVISION/ FEB 1 1899/  
MINNEAPOLIS, MINN.

Official Registered Mail of the  
Havana Post Office in Cuba sent  
in 1899.



A penalty of \$300 is fixed  
on this envelope to avoid postal  
private matter.

Post Office Department.  
POST OFFICE AT NEW YORK, N. Y.  
OFFICIAL BUSINESS.

(No. 6-A.)

Mr. Edward S. Stebbins

612 Masonic Temple

Minneapolis, Michigan

Try New

# 1932-35 THE PANAMA CANAL, BUREAU OF POSTS

The Smithsonian Institution and Pan American Union were also granted the privilege. These official mail covers are the privilege extended to United States colonial empire; The Panama Canal - Canal Zone Postal Service.

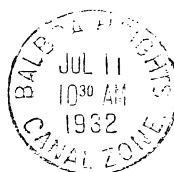
1215-S

## THE PANAMA CANAL BUREAU OF POSTS

POST OFFICE AT \_\_\_\_\_ C. Z.

OFFICIAL BUSINESS

POSTMASTER  
BALBOA HEIGHTS  
CANAL ZONE



PENALTY  
FOR PRIVATE USE  
\$300



Mr. W.W. Morrison,  
4001 Randolph Ave.,  
Oakland, Calif.

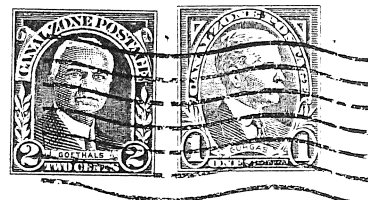
1215-S

## THE PANAMA CANAL BUREAU OF POSTS

POST OFFICE AT \_\_\_\_\_ C. Z.

OFFICIAL BUSINESS

POSTMASTER  
BALBOA HEIGHTS  
CANAL ZONE



G. Glynn,  
Dushore,  
Penn.

- a) Penalty frank official mail of the Bureau of Posts - Panama Canal, Canal Zone sent in 1932 and postmarked BALBOA HEIGHTS, CANAL ZONE./ JUL 11 10.30AM 1932.  
b) official Business envelope used in official correspondence from Canal Zone Postal Service on Jan. 7, 1935. 3 cent postage paid the then current from Canal Zone to U.S. rate.

# 1952-64 CANAL ZONE POSTAL SERVICE OFFICIAL AIR MAIL

Air Mail service - between  
Canal Zone and U.S.A.

1215-1-S

THE PANAMA CANAL  
Canal Zone Postal Service  
BALBOA HEIGHTS, C.Z.  
(POST OFFICE)

OFFICIAL BUSINESS

VIA AIR MAIL

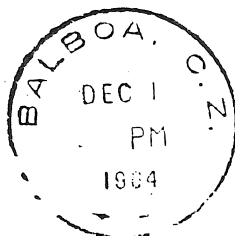
*Miss Beatrice L. L...*

CANAL ZONE PHILATELIC AGENCY

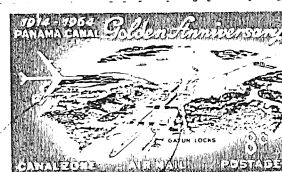
CANAL ZONE GOVERNMENT  
BALBOA HEIGHTS, CANAL ZONE  
PANAMA CANAL COMPANY

BALBOA HEIGHTS, C. Z.

OFFICIAL BUSINESS



PENALTY FOR  
PAYMENT



41

*Miss Josephine R. Harper  
1106 Union National Bank Building  
Youngstown  
Ohio 44503*

a) official Air Mail of the Canal Zone Postal Service sent U.S.A. in 1952, postmarked BALBOA HEIGHTS, C.Z./ FEB 26/ 1952, and handstamped VIA AIR MAIL. Air mail to USA postage (1/2 oz.) was 6 cent in 1952.

b) Official Air Mail of the Canal Zone Philatelic Agency sent to U.S.A. in 1964 and postmarked BALBOA, C.Z./ DEC 1 PM 1962. Air Mail to U.S.A. postage was 20 cents in 1962.

Air Mail service - between  
Caroline Islands and New York

## CHAPTER-X OFFICIAL AIR MAIL

### 1920 OFFICIAL AIR MAIL

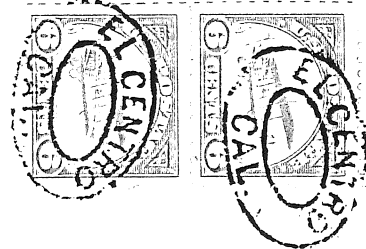
The Post Office Department's most extraordinary role in transportation was probably played in the sky, arole, unfortunately, little known today other than to postal employees and the pioneers of American avation.

On May 15, 1918, the Post Office Department begin scheduled air mail service between New York and Washington, D.C., an important date not only for the Post Office but for all commercial aviation.

The penalty clause official mail ensured first class service. Any addition service (Air Mail, Registered Mail, and etc.) required addition postage.

POST OFFICE DEPARTMENT  
POST OFFICE, EL CENTRO, CALIF.  
POSTMASTER'S OFFICE  
OFFICIAL BUSINESS

Penalty For Private Use to  
Avoid Payment of Postage, \$300



A.L. Kubitz,  
1377 Santiago Ave.,  
Santa Ana, California.

8085



Copy of Reverse  
(70%)

This Post Office Department envelope was sent on official business, the use of air mail and registered mail the 12 cents postage. The envelope is postmarked EL CENTRO, CAL. and EL CENTRO, CAL./DEC 23 1920/REGISTERED.

1922

## OFFICIAL AIR MAIL

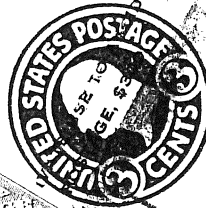
Air Mail service - between  
Washington, D.C. and New York City

Corner Card:

Station 1, Cincinnati, Ohio  
POSTAL SAVINGS SYSTEM,  
Postoffice, CINCINNATI, OHIO.

Received Postmark:

CINCINNATI, OHIO/  
JAN 31 1913/ M.O.B.

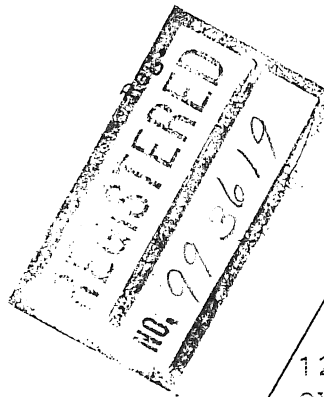


Mr. Myron S. Falk, Jr.,  
130 East 44th Street,  
New York City.

Copy of Reverse ( )  
Received Postmark:  
NEW YORK/ G.E.STA.RE  
4-11 1922

After 5 days, return to

Post Office Department  
Photoduplication  
Division of Stamps  
Washington, D.C.



This Post Office Department  
envelope was sent in 1922 on  
official business, the use of  
air mail and registered mail the  
12 cents postage. The Penalty Frank  
overprinted stamped envelope is has  
stamped local precancel - WASHINGTON  
D.C..

15

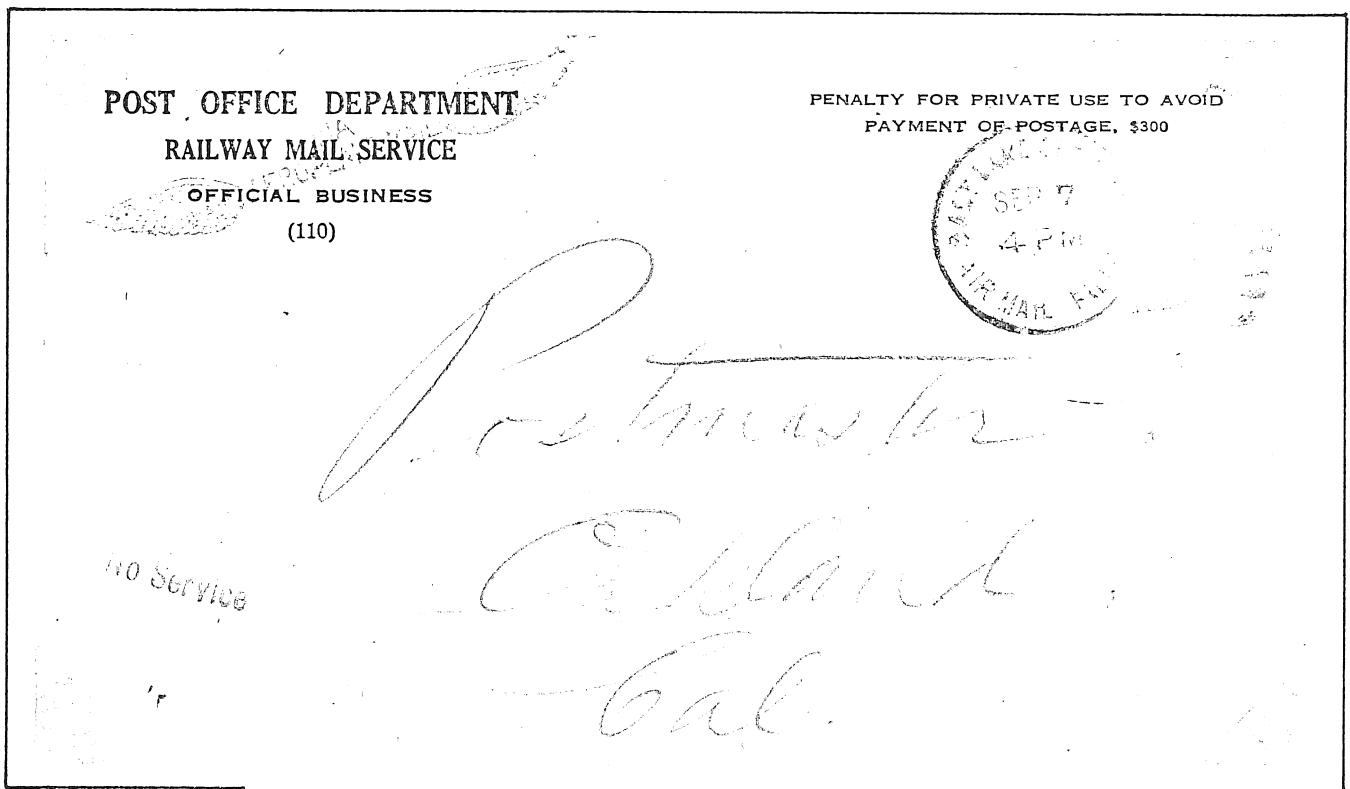
---

# 1923 OFFICIAL AIR MAIL

Air Mail Service - between Salt lake City, Utah and  
Oakland, California.

Corner card:

POST OFFICE DEPARTMENT/ RAIL MAIL SERVICE/ OFFICIAL BUSINESS



Penalty Frank Official Air Mail of Rail Mail Service  
Office at Salt Lake City in Utah sent in 1923 and hand-  
stamped in violet VIA AEROPLANE MAIL.

Postmark:

SALT LAKE CITY, UT/ SEP 7 4PM/ AIR MAIL FIELD/ 1923

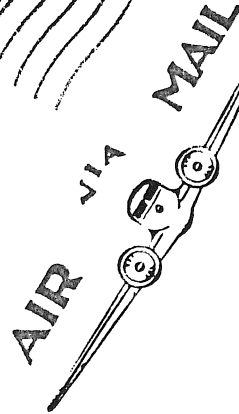
---

1938

## OFFICIAL AIR MAIL

Air Mail service - between  
North Carolina and Washington, D.C.

Imprinted Corner Card:  
Post Office Department/  
Headquarters  
NATIONAL AIR MAIL WEEK  
Charlotte, North Carolina



Mr. Fred D. Fagg, Director,  
Bureau of Air Commerce,  
Department of Commerce,  
Washington, D.C.

Post Office Department  
Headquarters  
NATIONAL AIR MAIL WEEK  
Charlotte, North Carolina

IMPORTANT OFFICIAL MAIL  
NO POSTAGE REQUIRED  
(SEE PAR. 3, SEC. 511, P. L. & R.)

**National AIR MAIL Week - May 15-21**

Imprint -  
IMPORTANT OFFICIAL MAIL/  
NO POSTAGE REQUIRED/  
(SEE PAR. 3, SEC. 511, P. L. & R.)

Penalty Frank Official Air Mail of  
the Post Office at Charlotte, North  
Carolina sent in 1938 and postmarked  
CHARLOTE, N.C./ APR 6 6PM 1938.



117

1945

OFFICIAL AIR MAIL

Air Mail service - between  
Caloline Islands and New York

23



Copy of Reverse (70%)  
Received Postmarks

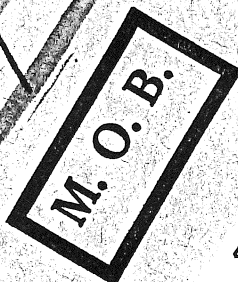
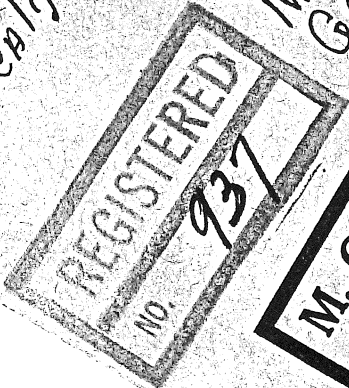
VIA AIR MAIL

PENALTY FOR PRIVATE USE TO AVOID  
PAYMENT OF POSTAGE \$300.

CONTENTS.

Money Order Funds

POSTMASTER New York, N.Y.  
Money order Cashier, Room 3112  
General Post Office, New York, N.Y.



Corner Card:  
U.S.S. Windsor STATION X6818  
C/O F.P.O. S.F., Calif

Penalty Frank Official  
Registered & Air Mail of  
U.S.S. Windsor Fleet Post  
Office in Caloline Islands  
sent in 1945, and handstamped  
VIA AIR MAIL & Registered Mark.

1945

OFFICIAL AIR MAIL

Air Mail service - between  
Washington, D.C. and Mississippi

Imprinted Corner Card:  
POST OFFICE DEPARTMENT  
SECOND ASSISTANT POSTMASTER GENERAL  
AIR MAIL SERVICE  
WASHINGTON 25 D.C./  
OFFICIAL BUSINESS

Imprint -  
IMPORTANT OFFICIAL MAIL/  
NO POSTAGE REQUIRED/  
(SEE PAR. 3. SEC. 511. P. L. & R.)

PENALTY FOR PRIVATE USE TO AVOID  
PAYMENT OF POSTAGE \$300  
(PMGC)



Postmaster,  
Louisville, Mississippi.

POST OFFICE DEPARTMENT  
SECOND ASSISTANT POSTMASTER GENERAL  
AIR MAIL SERVICE  
WASHINGTON 25, D. C.  
OFFICIAL BUSINESS

IMPORTANT OFFICIAL MAIL  
NO POSTAGE REQUIRED  
(SEE PAR. 3 SEC. 511. P. L. & R.)

From 1944 to 1955 penalty covers also indicated where they were obtained: PMGC if ordered via Postmaster General contact.

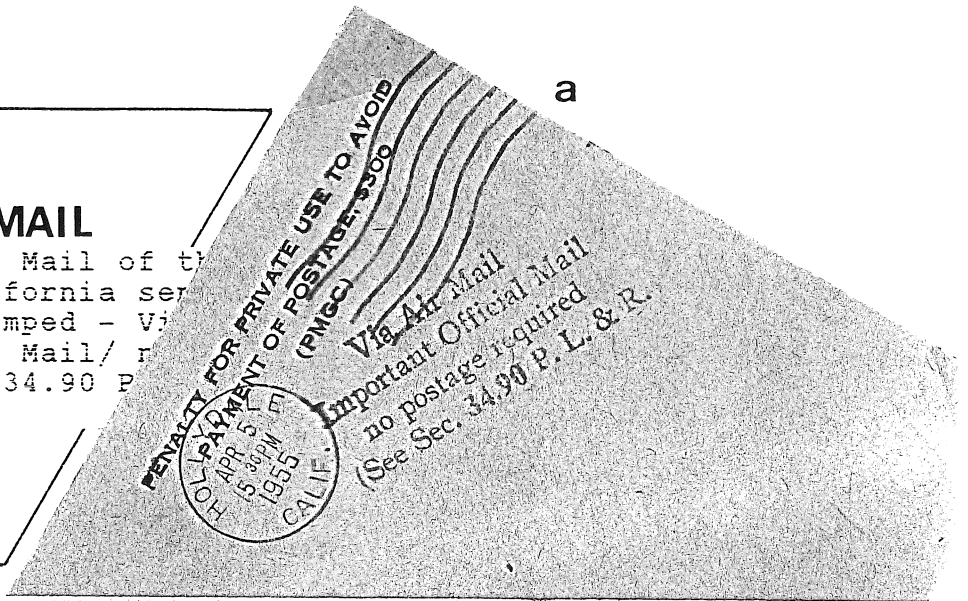
Penalty Frank Official Air Mail of the Second Assistant Postmaster General sent in 1945 and postmarked WASHINGTON, D.C./ SEP 20, 1945/ BENJAMIN FRANKLIN STA..

119

# 1955-58

## OFFICIAL AIR MAIL

a) Penalty Frank Official Air Mail of the Post Office, Hollydale, California sent in April 5, 1955 and handstamped - Via Air Mail/ Important Official Mail/ no postage required/ (See Sec. 34.90 P.L. & R)



UNITED STATES POST OFFICE

Kenosha, Wis

OFFICIAL BUSINESS

P-4



12 **AIR MAIL**

Ben E. Hancock  
1235 Forbes St.  
East Hartford 8,  
Conn.

POST OFFICE DEPARTMENT  
POST OFFICE, HOLLYDALE, CALIF  
OFFICIAL BUSINESS  
(No. 55)

Post  
Division  
Claims

b) Penalty Frank Official Air Mail of Post Office, Kenosha, Wisconsin sent in March 20, 1958 and handstamped - AIR MAIL.

(20)

1967

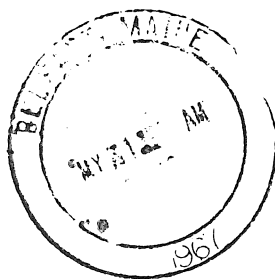
OFFICIAL AIR MAIL

Imprinted Corner Card:  
POST OFFICE DEPARTMENT  
WASHINGTON, D.C. 20260/  
OFFICIAL BUSINESS  
D-504

PENALTY FOR PRIVATE USE TO AVOID  
PAYMENT OF POSTAGE, \$300



*47 Delany Ave  
Belfast, Maine  
33801*



Mr. William T. Morris  
51 Court St.  
Belfast, Maine 04915  
AMPHIL

POST OFFICE DEPARTMENT  
WASHINGTON, D. C. 20260  
OFFICIAL BUSINESS  
D-504

Penalty Frank Official Air Mail of  
the Post Office Department sent in  
1967 and received postmark - BELFAST  
MAINE/ MAY 1 AM 1967.

## CHAPTER - XI

### POSTAL SAVINGS MAIL 1910-14

When the U.S. Postal Savings system began, special stamps and stamped envelopes marked OFFICIAL MAIL were printed for that very restricted usage in 1910. Only seven varieties went into service, and they were invalidated in 1914.

#### OFFICIAL STAMPS



1 cent



2 cents



10 cents



50 cents



1 dollar

#### OFFICIAL STAMPED ENVELOPES



1 cent



2 cents

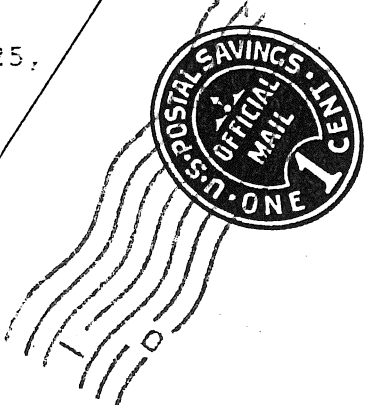
The use of Postal Savings Official Stamps was discontinued by the Act of Congress, approved September 23, 1914. The unused stamps and stamped envelopes in the hands of postmasters were returned and destroyed.

In the early 1900's many peoples didn't have bank accounts. The Post office set up the Postal Savings System to allow people to deposit money with the Post Office like a bank.

# 1912

## POSTAL SAVINGS MAIL

An Act of Congress on June 25, 1910, established a postal savings system in post office, effective January 1, 1911.



MANUFACTURERS NAT. BANK,  
ALBANY, N.Y.

Post Office Department  
POSTAL SAVINGS SYSTEM  
Washington

1 cents Postal Savings stamped envelope  
Postal Savings Official Mail sent in 1  
and postmarked in WASHINGTON, D.C..

Corner card ;  
Post Office Department  
POSTAL SAVINGS SYSTEM  
WASHINGTON

53 1411

123

1913

POSTAL SAVINGS MAIL

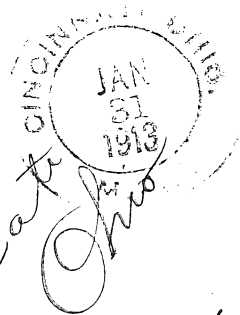
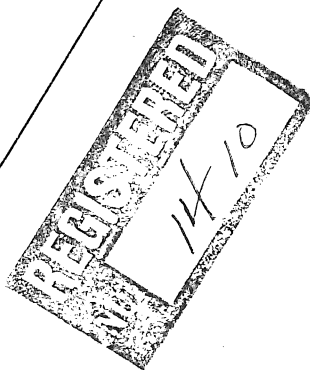
Corner card:

POSTAL SAVINGS SYSTEM,  
Postoffice, CINCINNATI, OHIO.

Postmark:

CINCINATY, OHIO/

JAN 31 1913/ M.O.B.



*Postmaster*  
*Cincinnati*  
5204

70%  
Colored cop

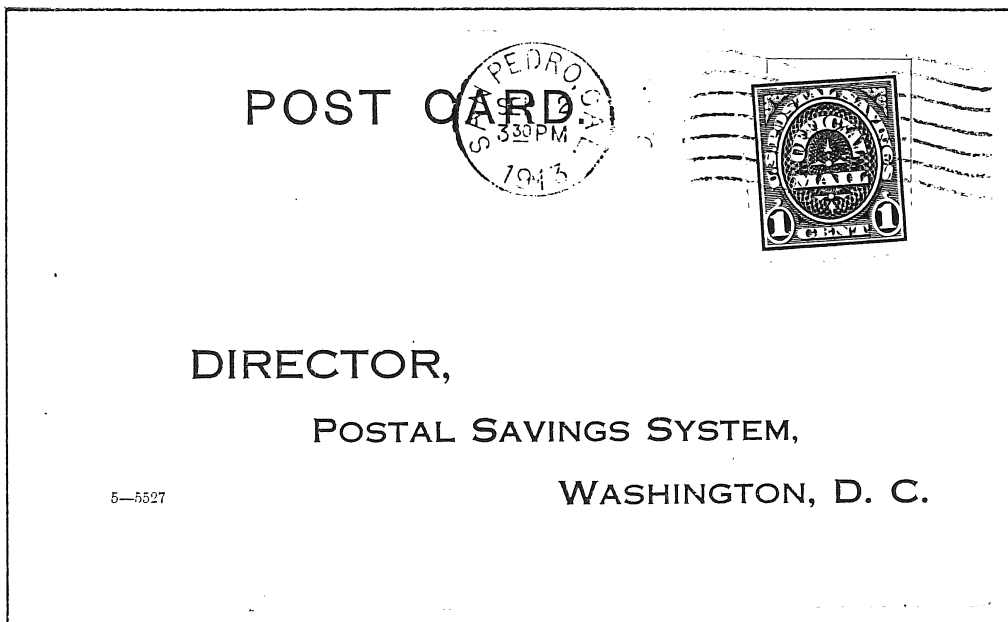
After 5 days, return to  
POSTAL SAVINGS SYSTEM,  
Postoffice, CINCINNATI, OHIO.



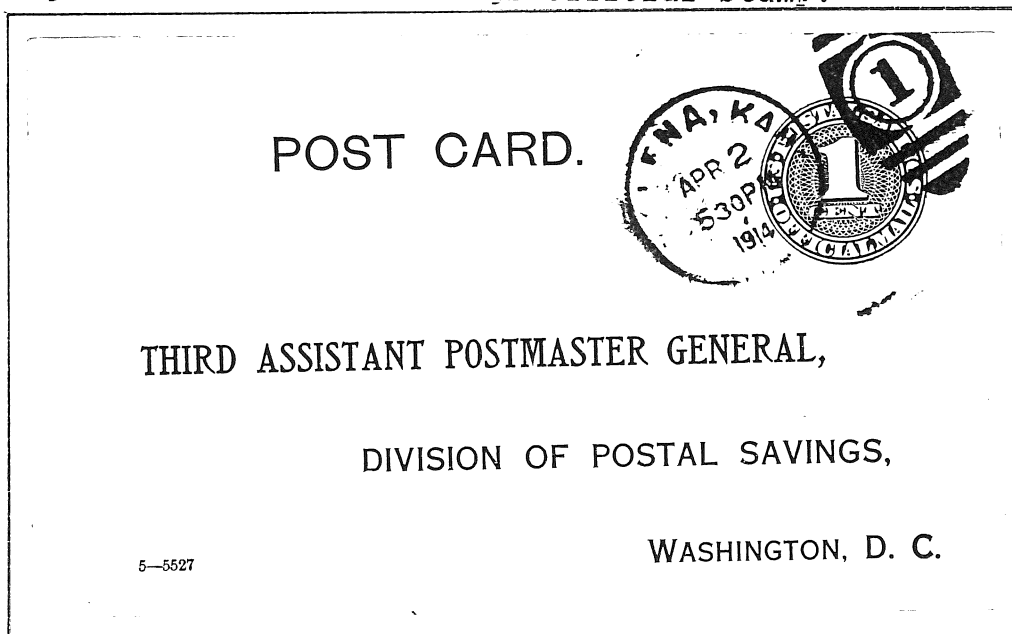
*P.S.*

Postal Savings 2 cents stamped envelope bearing a 10 cents postal saving stamp (registered mail postage fee).

## 1913 - 14 POSTAL SAVINGS MAIL



Official Postal Savings Mail of the Post Office at San Pedro, California, sent to the Director of the Postal Savings System in Washington, D.C., and postmarked in San Pedro, CAL/ SEP 2 3:30PM 1913. Postal Savings post card bearing a 1 cent Postal Savings Official Stamp.



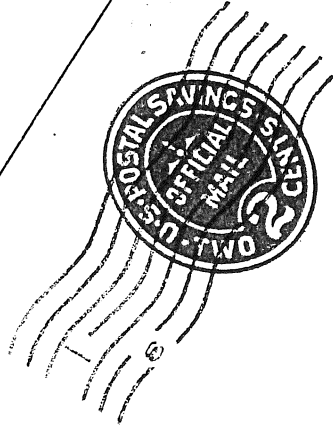
Postal Savings Official Postal Card of the Post Office at Salina, Kansas sent to the Division of Postal Savings in Washington, D.C. in 1914 and postmarked SALINA, KAN/ APR 2 5:30PM 1914. Few of the Postal Savings Official Postal Cards have been founded.



1914

POSTAL SAVINGS MAIL

Corner Card:  
POSTAL SAVINGS SYSTEM/  
Third Assistant Postmaster General/  
Division of Postal Savings/  
WASHINGTON.



Mr. Benjamin Prieth,  
225 Washington Street,  
Newark, New Jersey.

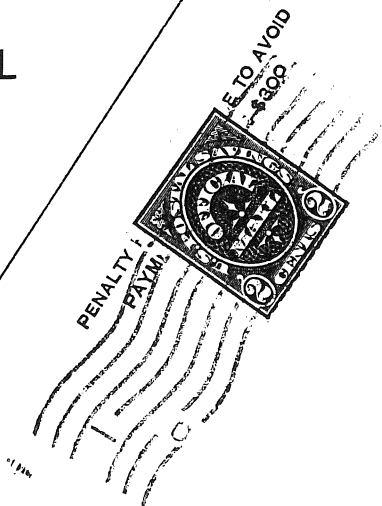
POSTAL SAVINGS SYSTEM  
Third Assistant Postmaster General  
Division of Postal Savings  
WASHINGTON

2 cents Postal Savings stamped envelope  
Postal Savings Official Mail sent in 19  
and postmarked in WASHINGTON, D.C./MAY 2 6  
1914.

# 1914

## POSTAL SAVINGS MAIL

Corner card:  
TREASURY DEPARTMENT  
OFFICE OF THE TREASURY



National Bank of Commerce,  
Seattle, Washington.

TREASURY DEPARTMENT  
OFFICE OF THE TREASURER  
OFFICIAL BUSINESS  
RETURN AFTER TEN DAYS



Postmark:  
WASHINGTON, D.C./SEP 15 7.30PM 1914

Treasury Department Official Business penalty clause envelope bearing a 2 cents postal savings stamp.

Act of September 23, 1914

This act extended the use of Penalty envelopes to all official matter sent in the mails pertaining to the business of the postal savings system.

## 1915 POSTAL SAVINGS MAIL / PENALTY FRANK

DIVISION OF  
POSTAL SAVINGS

Postal Savings System  
THIRD ASSISTANT POSTMASTER GENERAL  
Washington

IN REPLYING  
REFER TO INITIALS AND DATE

TAL

November 15, 1915.

State Bank of Woneewoc,  
Woneewoc,  
Wisconsin.

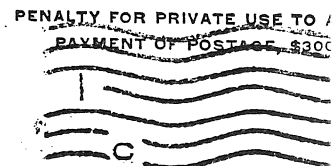
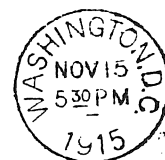
Gentlemen:

The Treasurer of the United States has been authorized to return a \$1,000 bond of the Board of Commissioners of the Port of New Orleans, Louisiana, held for account of the State Bank of Woneewoc as postal savings collateral.

Respectfully,

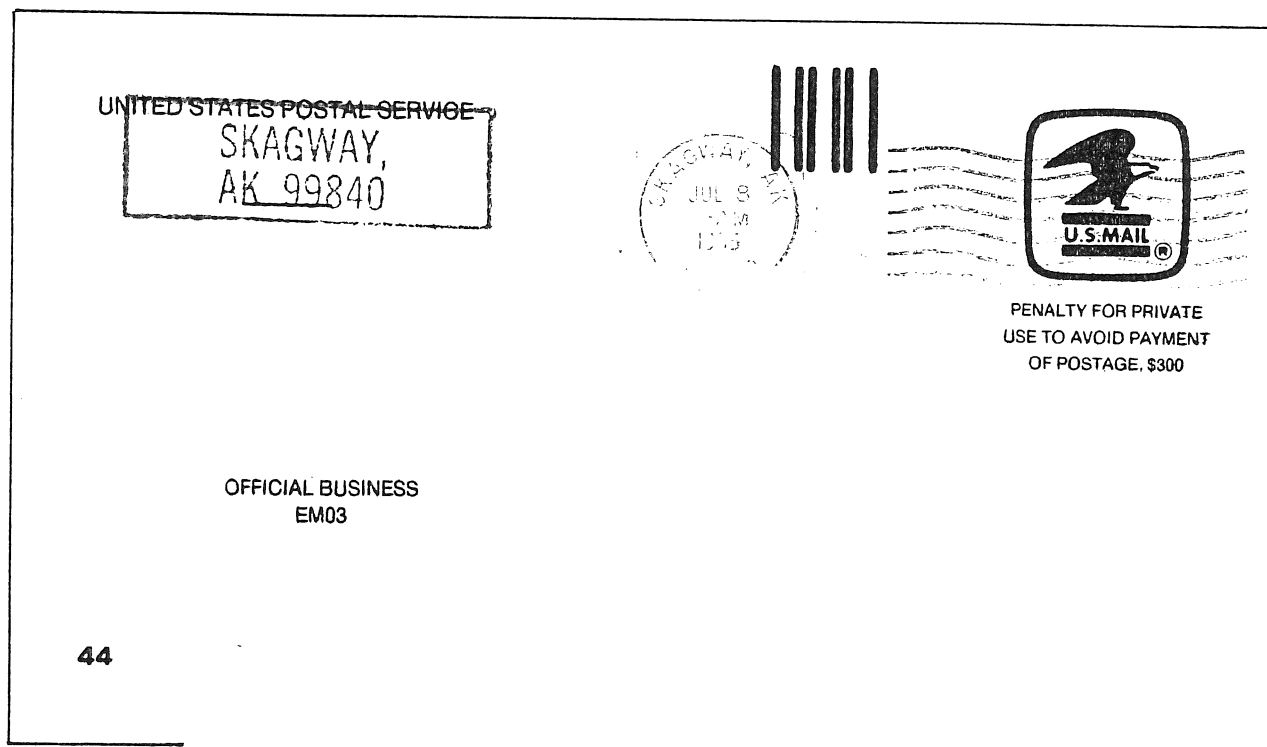
*W. B. Smith*  
Third Assistant Postmaster General

POSTAL SAVINGS SYSTEM  
THIRD ASSISTANT POSTMASTER GENERAL  
DIVISION OF POSTAL SAVINGS  
WASHINGTON  
OFFICIAL BUSINESS



State Bank of Woneewoc,  
Woneewoc,  
Wisconsin.

## U.S. POSTAL SERVICE (1971- ) PENALTY FRANK



The most massive piece of U.S. Postal legislation to date was passed on August 12, 1970. On July 1, 1971, the Post Office Department (a cabinet-level government agency) became the United States Postal Service (a semi-autonomous government corporation). USPS has effected many major changes in the handling of official mail and the format of official mail covers.

The first such as change was the use of the USPS logo on penalty mail.

### BIBLIOGRAPHY

- History of the United States Postal Service, (1775-1993)
- A Short History of the Mail Service
- The Story of the United Mails
- The Post Office Department
- American Stampless Cover Catalogue, Vol.1-3
- A Guide to 19th Century United States Postmarks
- Postmasters & Postoffices of the United States, 1782-1811
- United States Domestic Postage Rates, 1789-1956
- 19th Century United States Stamped Envelopes
- Penalty Overprinted U. S. Stamped Envelopes
- History of the Free Frank Mail in the United States
- The Washington, D.C. Dead Letter Office to 1920
- Official Mail Journal, Issues No.1-12
- United States Postal History Sampler