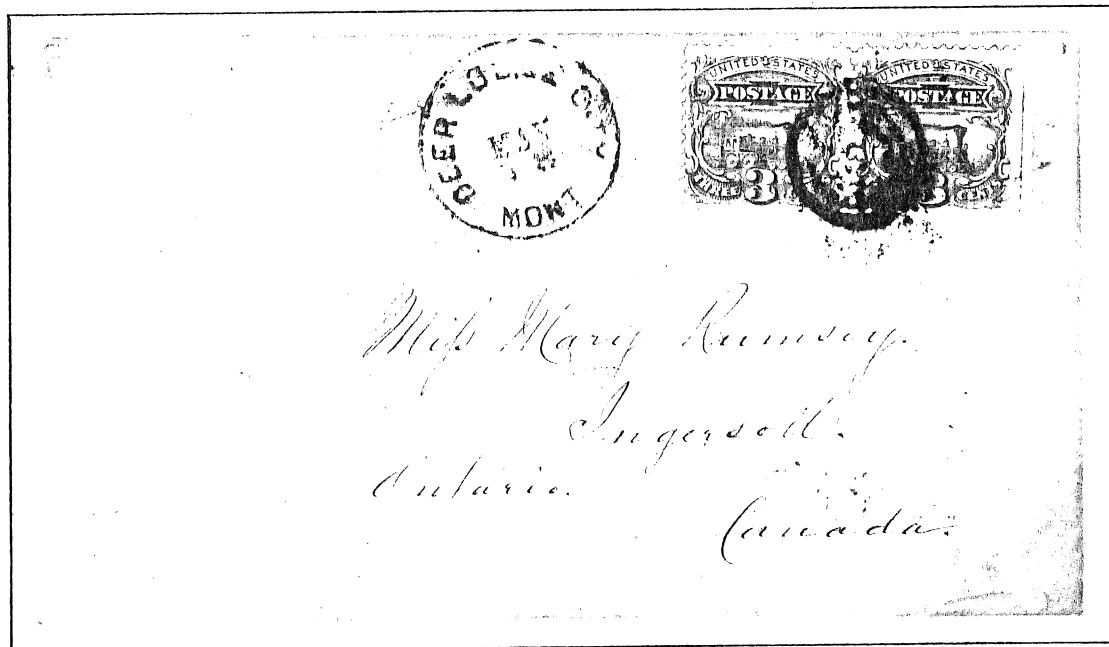
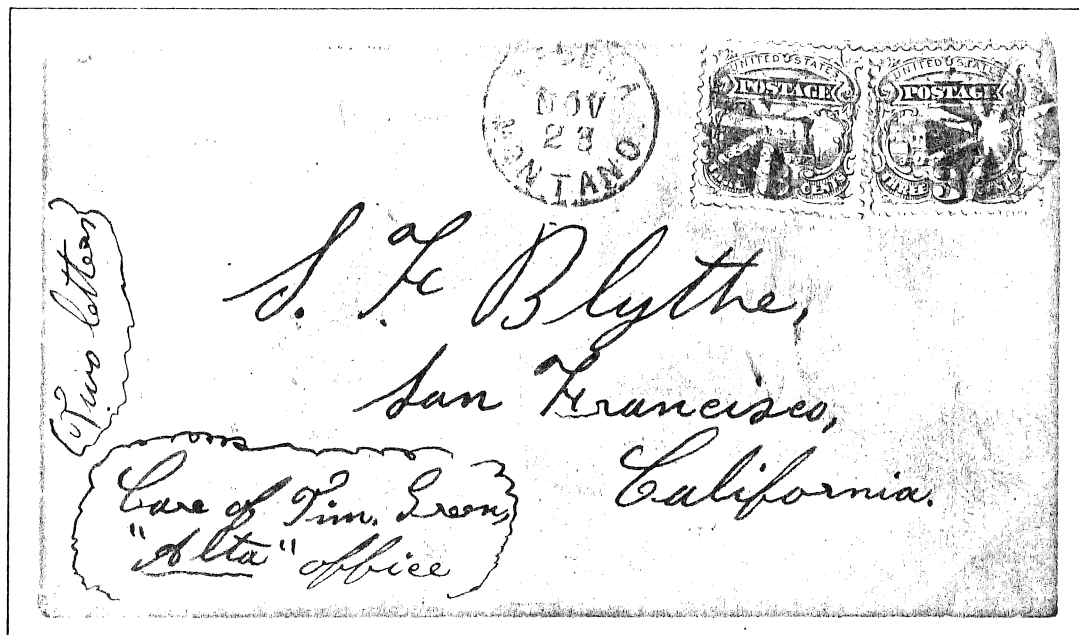


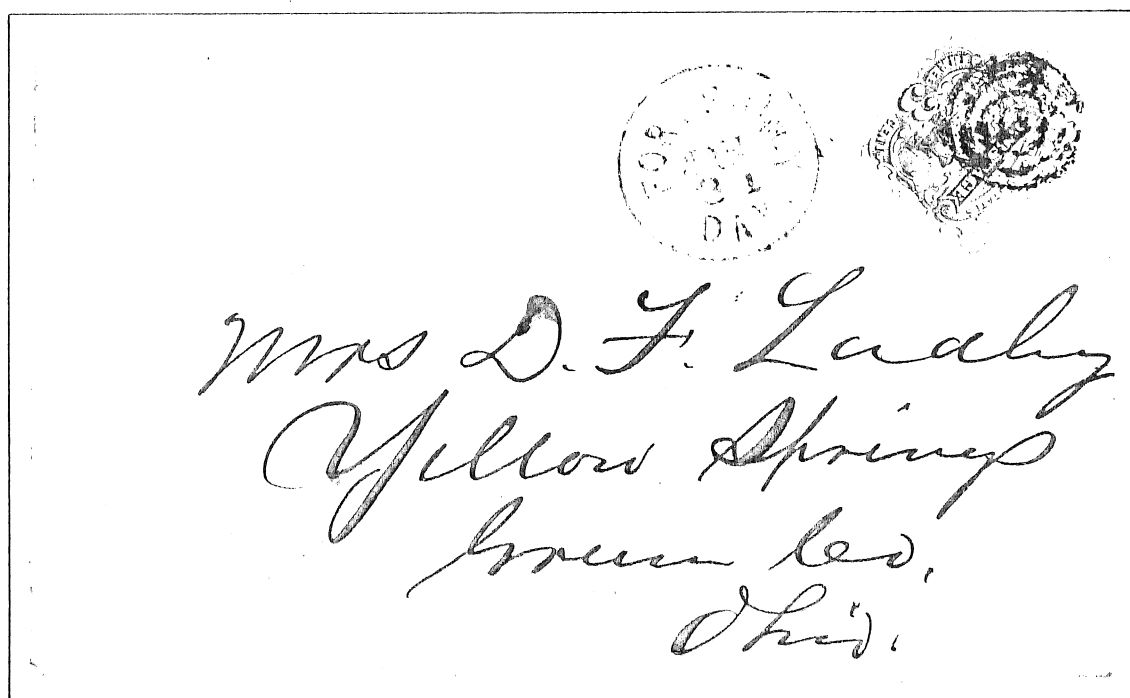
VIRGINIA CITY, MONTANA TERRITORY



DEER LODGE CITY, MONTANA. TERRITORIAL USE TO CANADA.



HELENA, "MONTANO" TERRITORY



FORT SULLY, DAKOTA TERRITORY

Cover @ Nancy Poli  
for repair

MOHAVE CITY, ARIZONA TERRITORY

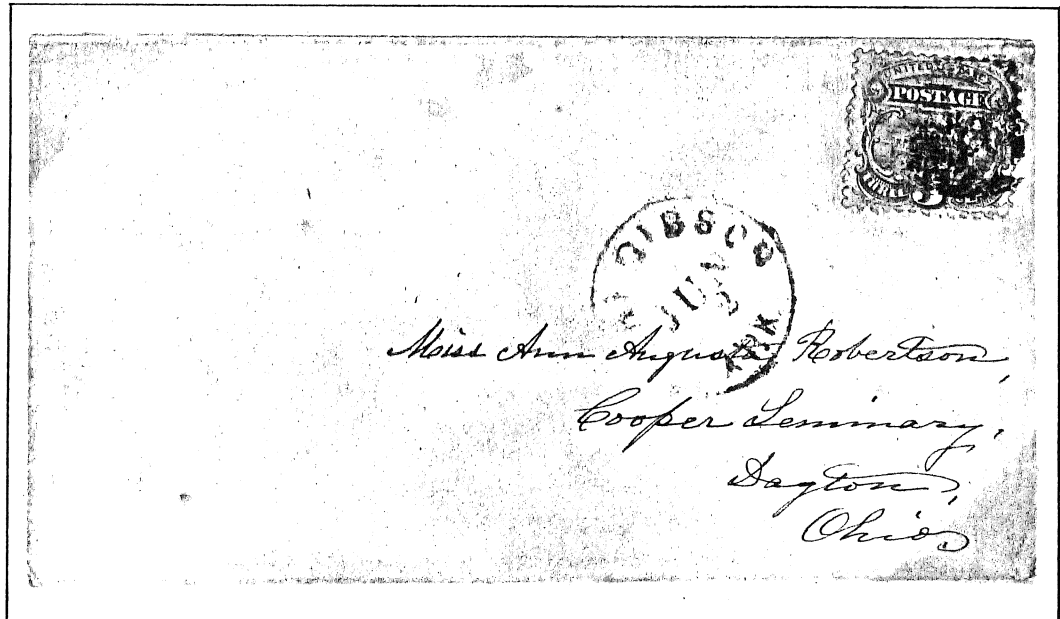


Mr Anthony Joseph

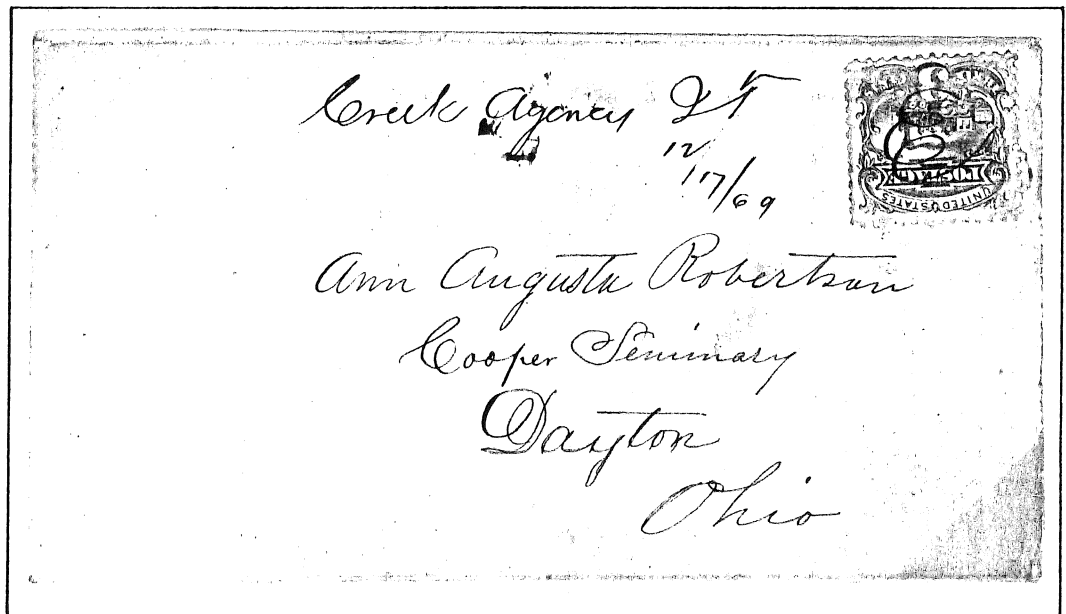
Jos. N. M.

1881 Feb 20

SANTA FE, NEW MEXICO TERRITORY

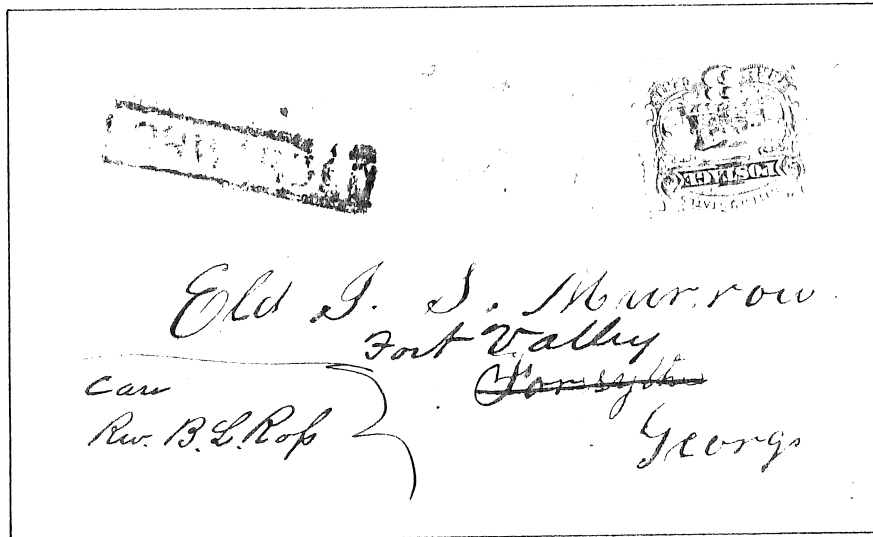


FORT GIBSON (ARK.), INDIAN TERRITORY, CHEROKEE NATION

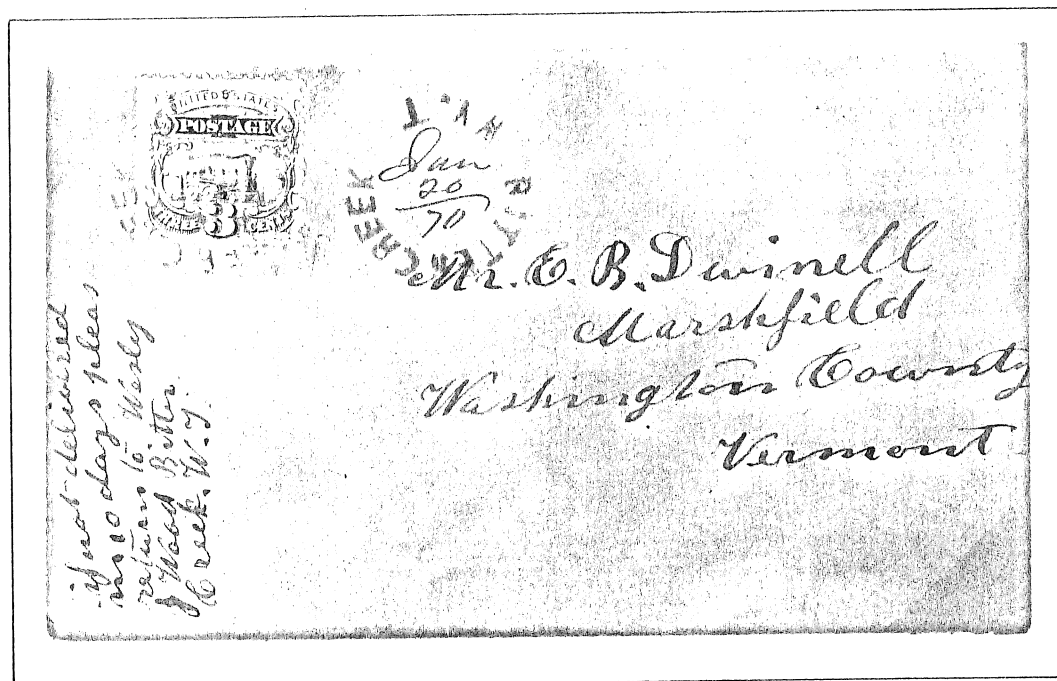


CREEK AGENCY, INDIAN TERRITORY

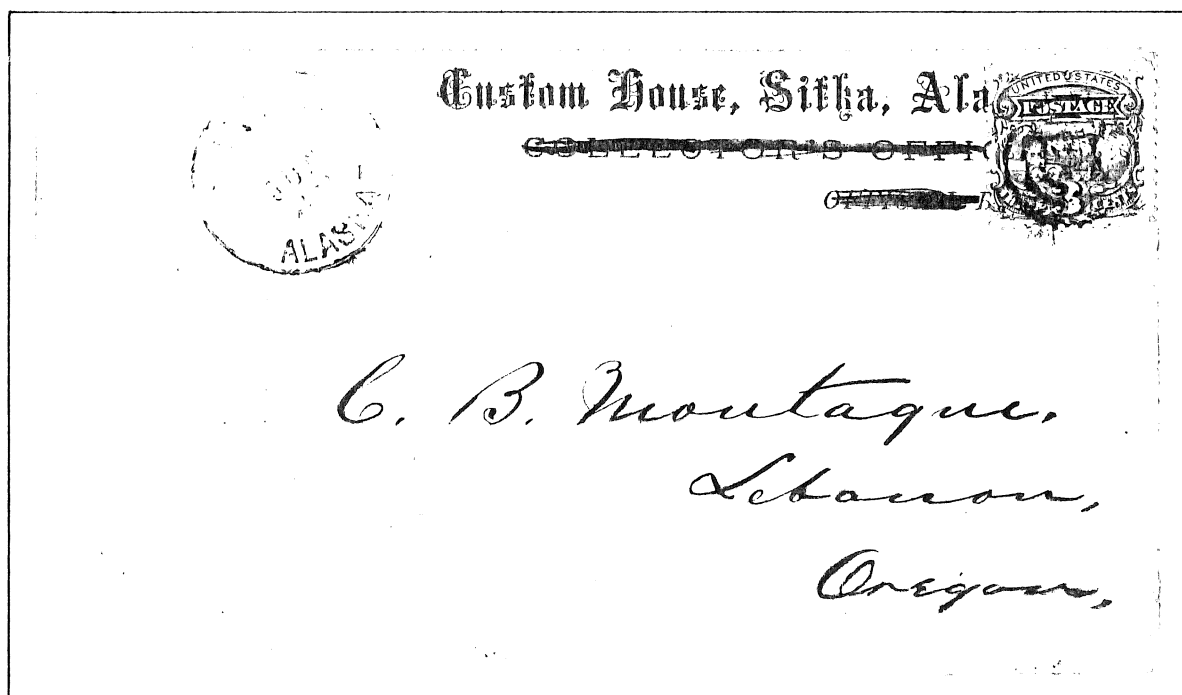




ATOKA, CHOCTAW NATION, INDIAN TERRITORY

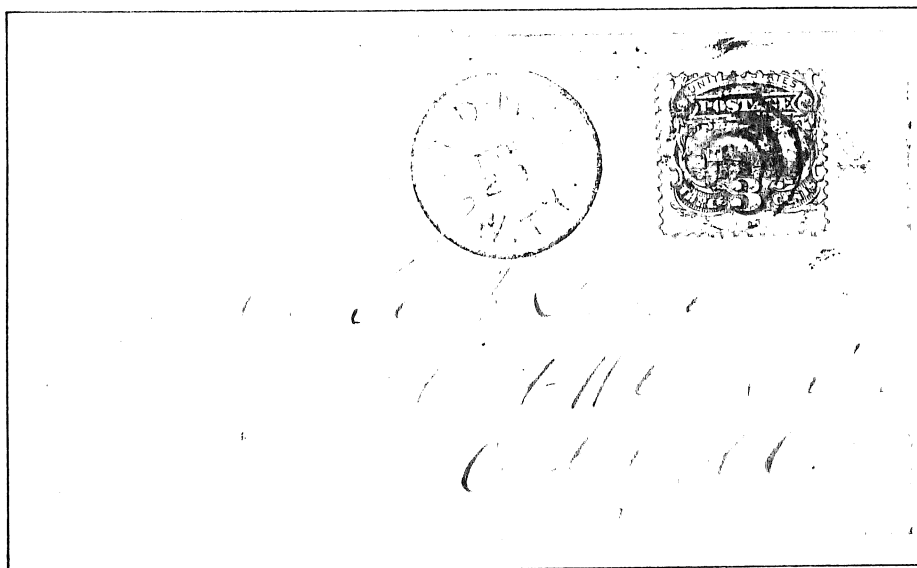


BITTER CREEK, WYOMING TERRITORY

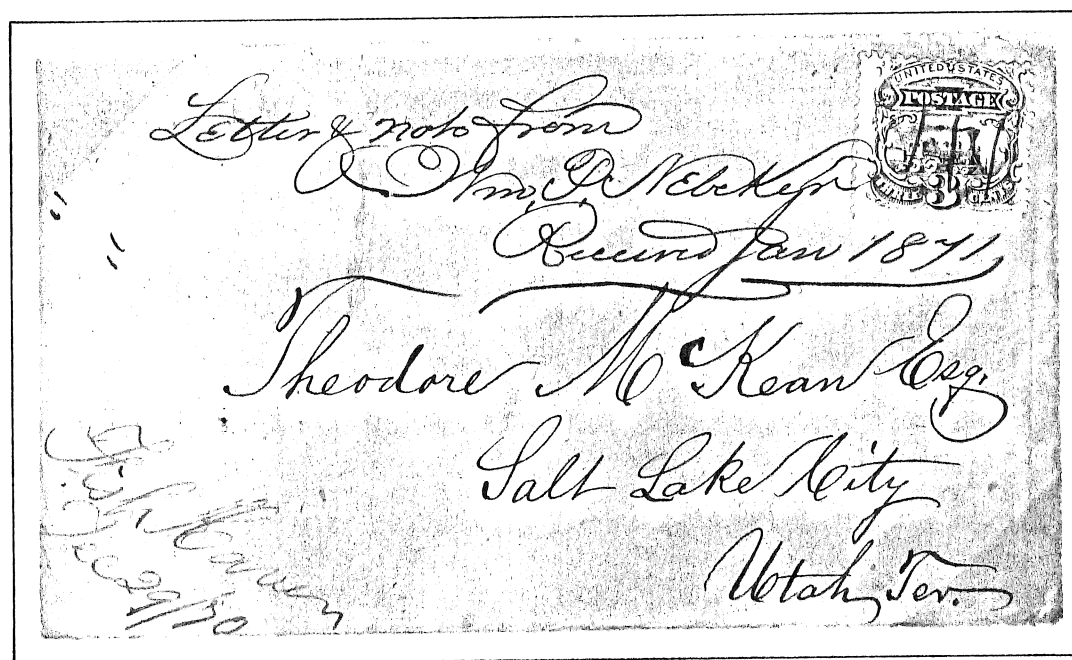


SITKA, ALASKA TERRITORY •

# TERRITORIAL TRANSFERS

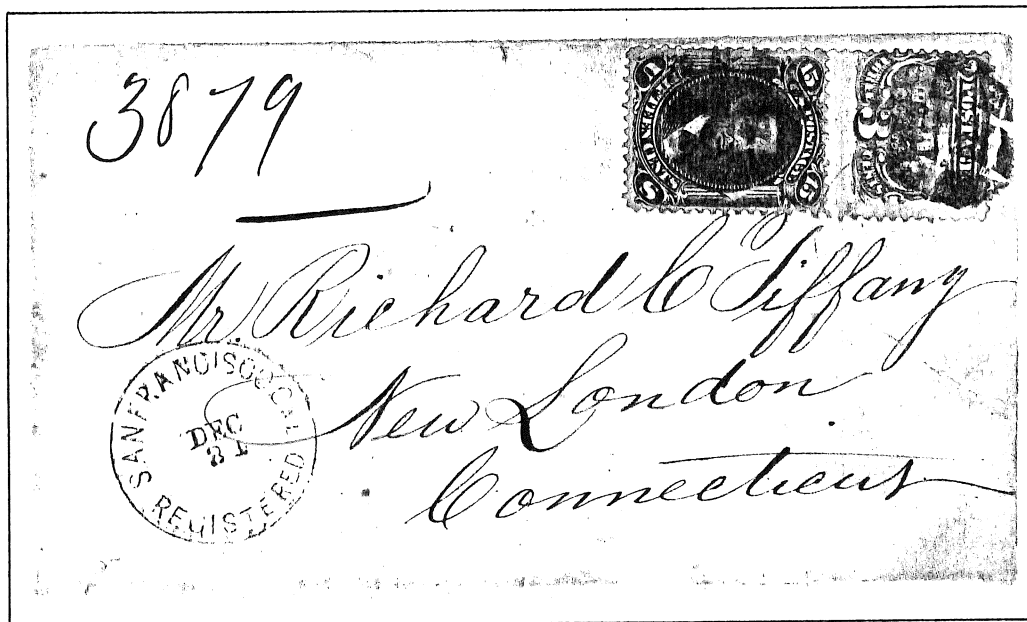


SIDNEY, WYOMING TERRITORY. POST OFFICE ESTABLISHED AS SIDNEY, DAKOTA TERRITORY JULY 2, 1868 AND TRANSFERRED TO WYOMING TERRITORY JULY 29, 1868. HOWEVER, THE TOWN WAS WITHIN THE BOUNDARY OF NEBRASKA AND WAS CHANGED TO CHEYENNE COUNTY, NEBRASKA ON JANUARY 15, 1870. ●

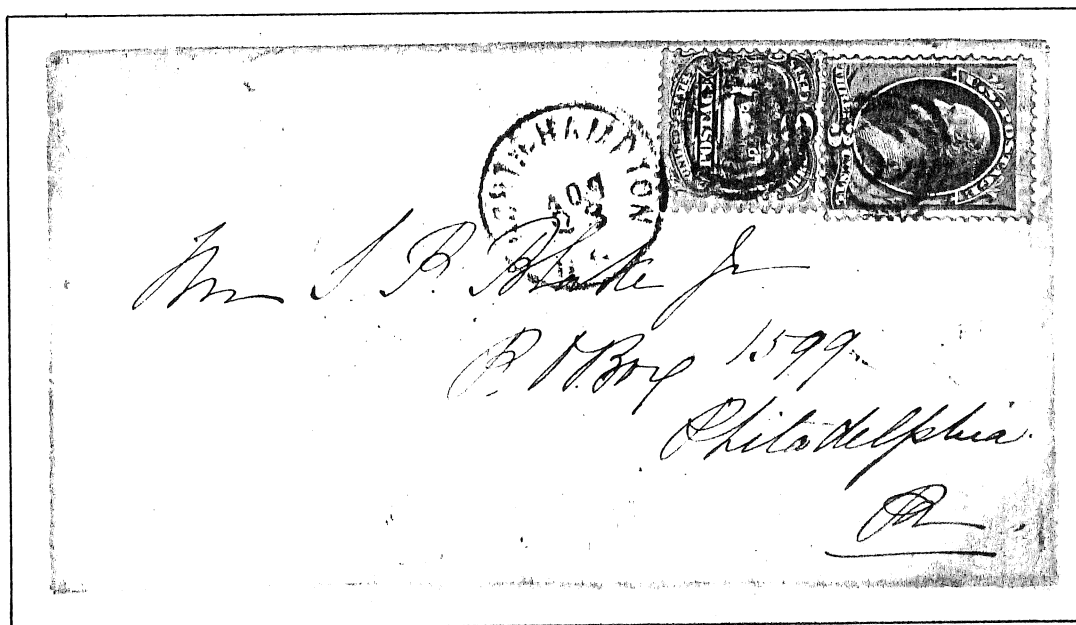


FISH HAVEN, UTAH TERRITORY. POST OFFICE ESTABLISHED DECEMBER 13, 1867. LATER SURVEY OF STATE BOUNDARIES DETERMINED TOWN TO BE IN IDAHO. TRANSFERRED TO IDAHO TERRITORY ON OCTOBER 1, 1873. ●

COMBINATION USAGE



USED WITH 15-CENT STAMP OF EARLIER 1866 ISSUE ON SAN FRANCISCO REGISTERED LETTER.



USED WITH THREE CENT STAMP OF LATER 1870-71 "BANKNOTE" ISSUE TO PAY SIX CENTS DOUBLE WEIGHT POSTAGE.

MIXED FRANKING

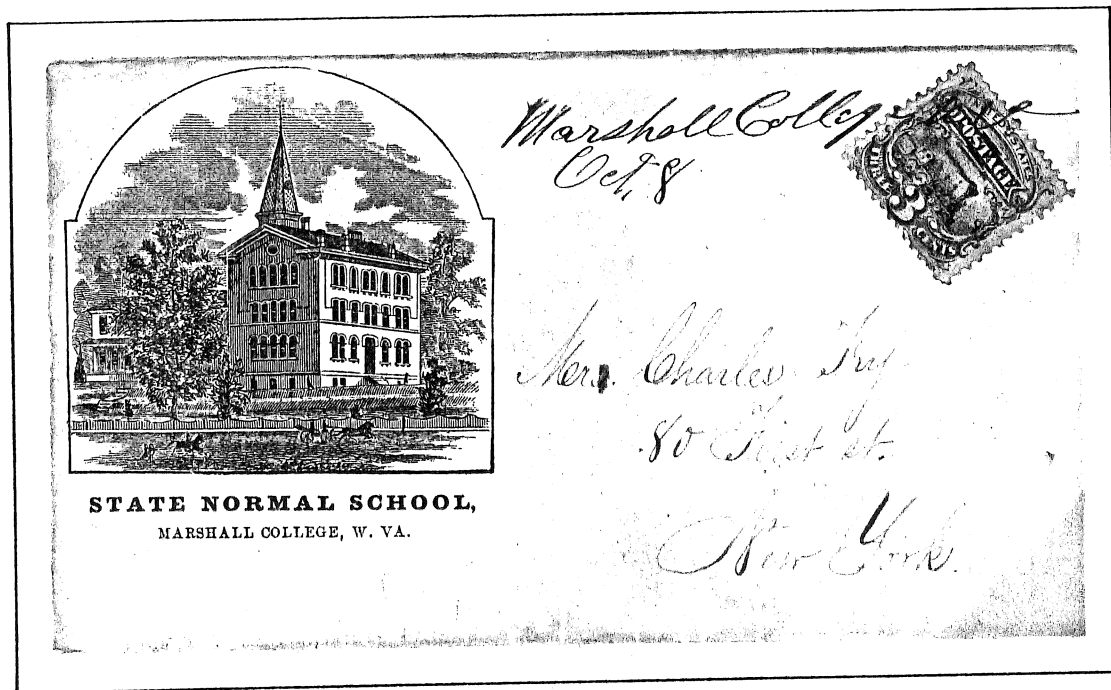


TWO SINGLES ON 1870 COVER TO CARLISLE, ENGLAND. FORWARDED TO TORQUAY, ENGLAND WITH BRITISH PENNY RED. MARKINGS INCLUDE INDISTINCT PLACE OF ORIGIN FEB. 22, MAGENTA PHILADELPHIA PAID ALL FEB. 22 AND TORQUAY MARCH 9, 1870 BACKSTAMP.



USED TO FORWARD INCOMING BRITISH MAIL. THE "A26" CANCEL INDICATES A GIBRALTAR ORIGIN. TRANSIT FULLY PAID BY GREAT BRITAIN PENNY RED AND TEN PENCE BROWN-RED. TWO CENTS SEA POSTAGE CREDIT APPLIED AT LONDON WHERE "PAID" TRANSIT MARKING IS DATED OCT. 25, 1869. RECEIVED AT NEW YORK CITY NOVEMBER 5 AND OWEGO, N.Y. NOVEMBER 7. FORWARDED TO ANNAPOLIS, MARYLAND WITH 3-CENT 1869.

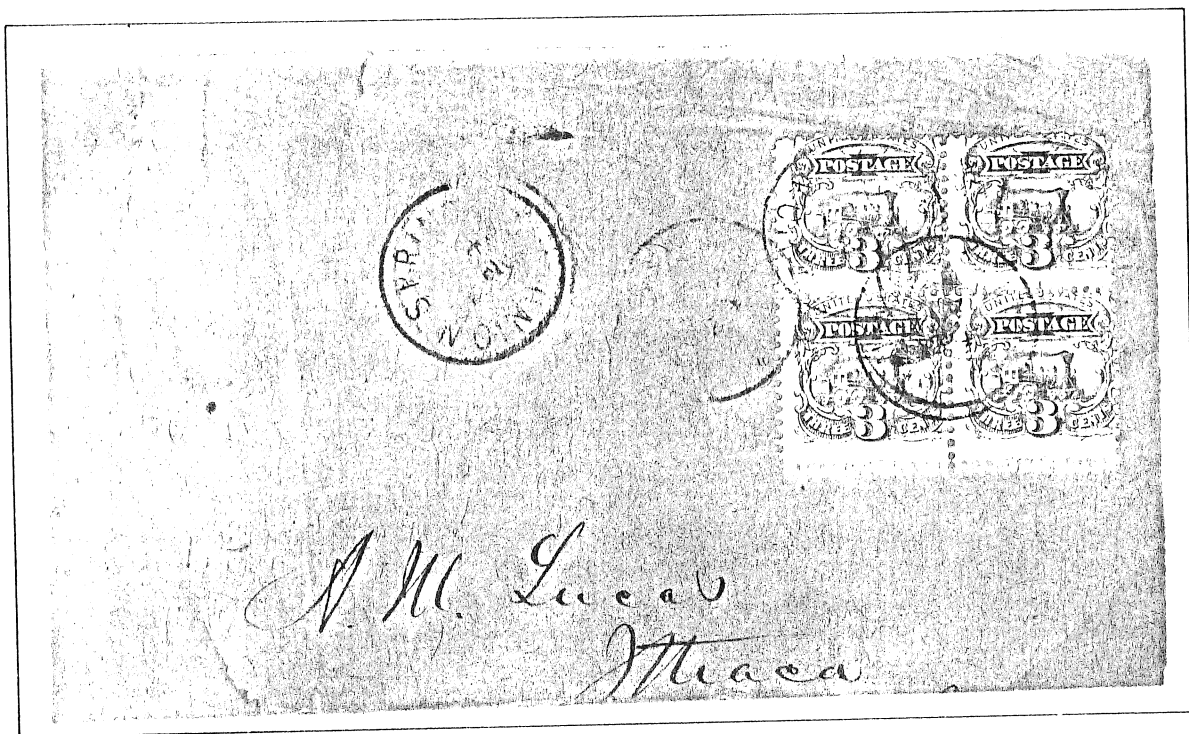
# LETTER RATES



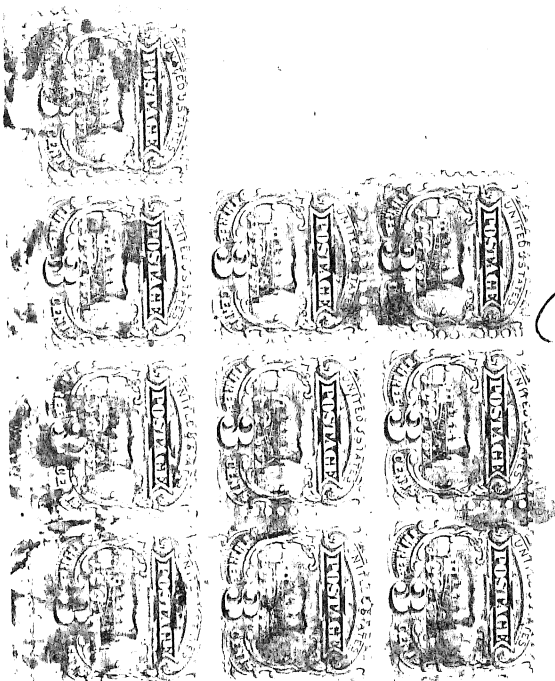
THE DOMESTIC RATE IN 1869 WAS THREE CENTS FOR A SINGLE WEIGHT (1/2 OUNCE) LETTER.



DOUBLE WEIGHT



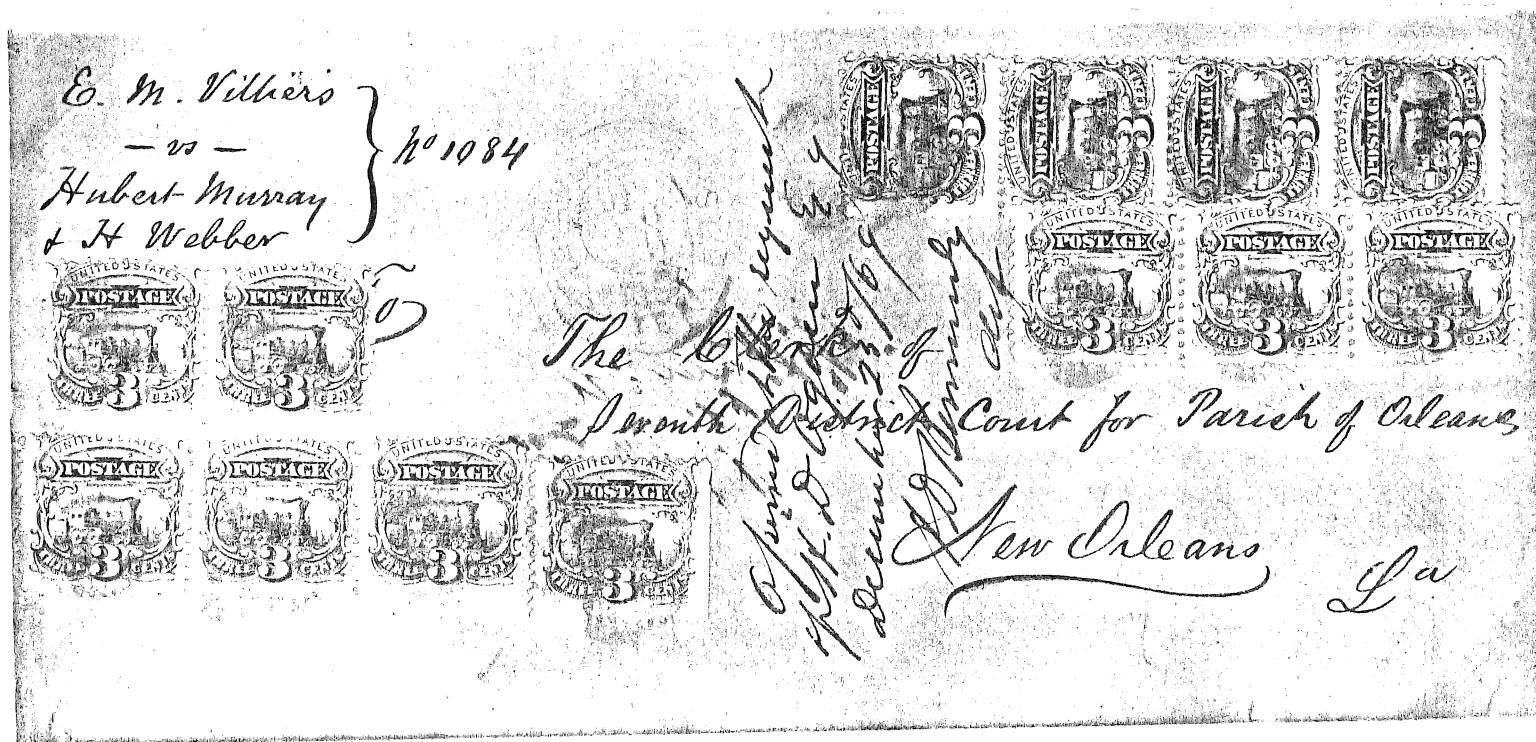
FOUR TIMES DOMESTIC RATE



J Henry Hill Esqr  
 Brinley Hall  
 Worcester  
 Mass

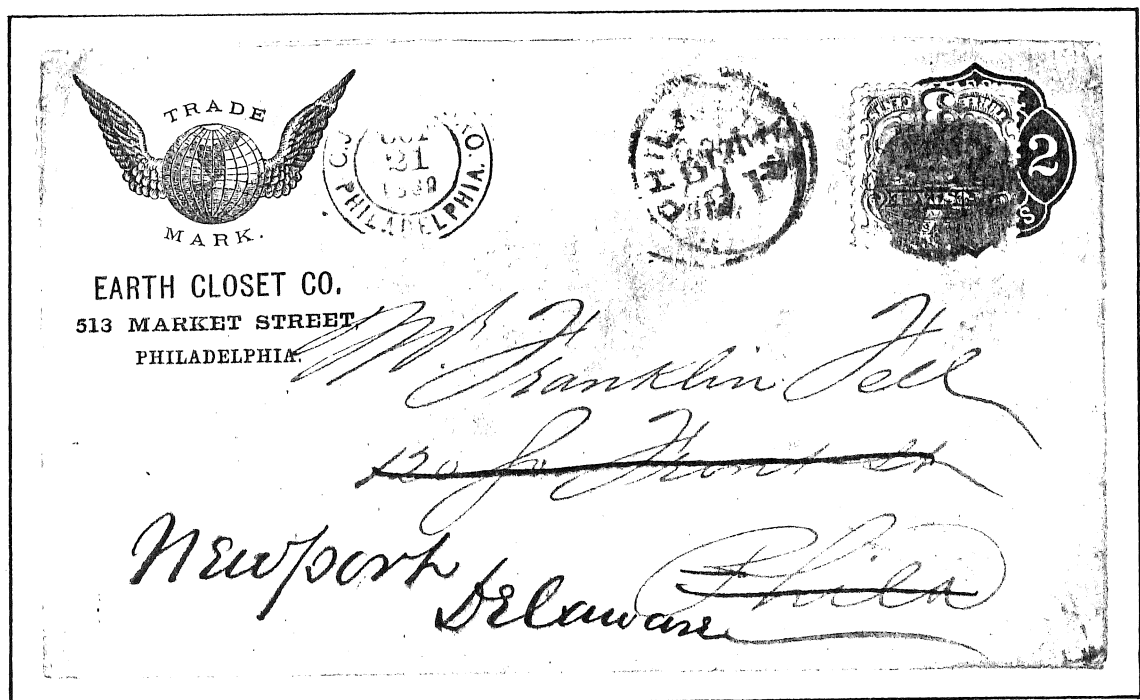
BLOCK OF NINE PLUS SINGLE PAYING TEN TIMES DOMESTIC RATE





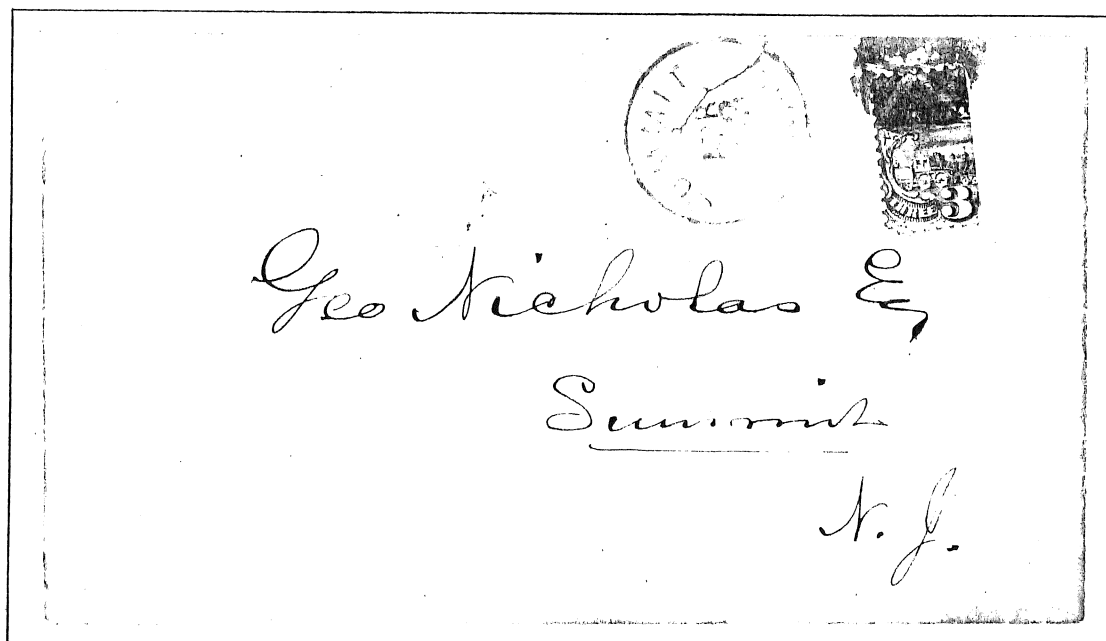
THIRTY NINE CENTS POSTAGE PAYING THIRTEEN TIMES DOMESTIC RATE. POSTED AT CORPUS CHRISTI, TEXAS ON DECEMBER 16, 1869. AT UPPER LEFT IS A CASE OR DOCKET NUMBER, NOT A REGISTRY NUMBER.

DROP LETTER

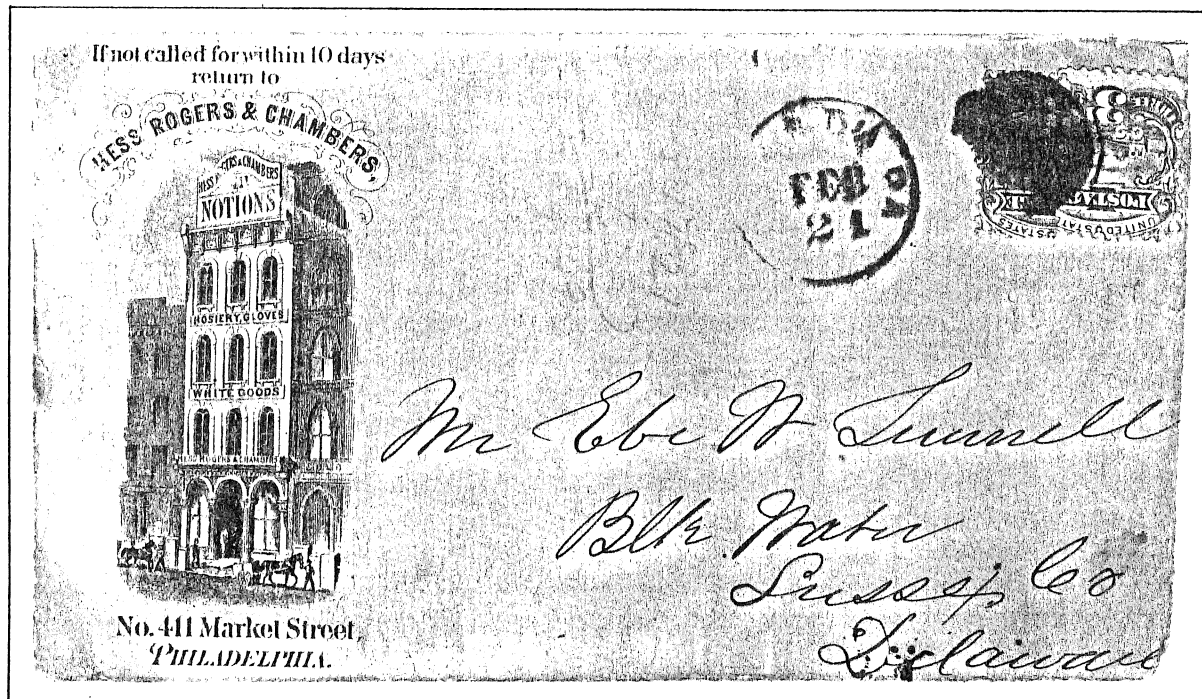


USED TO FORWARD PHILADELPHIA DROP LETTER. LOCAL LETTERS PAID TWO CENTS PER HALF OUNCE WHERE THERE WAS FREE DELIVERY BY CARRIER. OCTOBER 21, 1869 MAILING OF 2-CENT ENTIRE OF 1863-64 ISSUE.

BI-SECTS



VERTICAL TWO-THIRDS USED TO PAY 2-CENT CARRIER RATE •



VERTICAL ONE-THIRD TIED TO SECOND COPY. POSSIBLE DOUBLE CIRCULAR RATE OR, SINCE OTHER STAMP HAS PORTION MISSING, POSSIBLE INTENTION OF USER TO MAKE ONE 3-CENT STAMP OUT OF ONE-THIRD OF ONE COPY AND TWO-THIRDS OF ANOTHER. •

UNITED STATES INTERNAL REVENUE.  
ANNUAL TAXES, MARCH, 1870.

To Reuben Lucas  
of Honeyville, in  
the 6th Division 6th District,  
and State of Virginia.



**TAKE NOTICE**

That, in pursuance of the acts of Congress, you are required to make out a Return according to the forms within, and deliver the same to me, at my office, WITHIN TEN DAYS FROM THE DATE HEREOF, or an addition of FIFTY PER CENTUM will be made to the proper tax.

No Return will be accepted unless made out in detail, that is, with the proper entry opposite each item of the Return, and the whole subscribed and sworn to.

The form and manner for declaring that a person is not possessed of a taxable income, under the proviso of Section 118, of the Act of June 30, 1864, amended by the Act of March 2, 1867, is prescribed by the Commissioner of Internal Revenue to be the within Return, properly filled up, subscribed and sworn to, as above indicated.

# 1142 See Luff - Page 1147

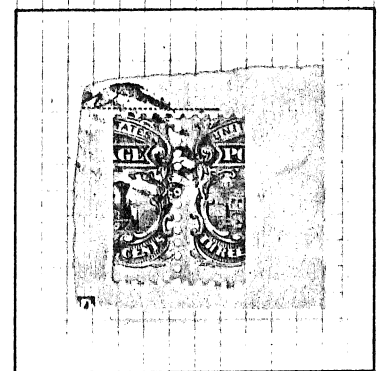
Dated this 2nd day of April, 1870.

Frank J. Bramhall  
Assistant Assessor.

OFFICE AT Luray, Va.

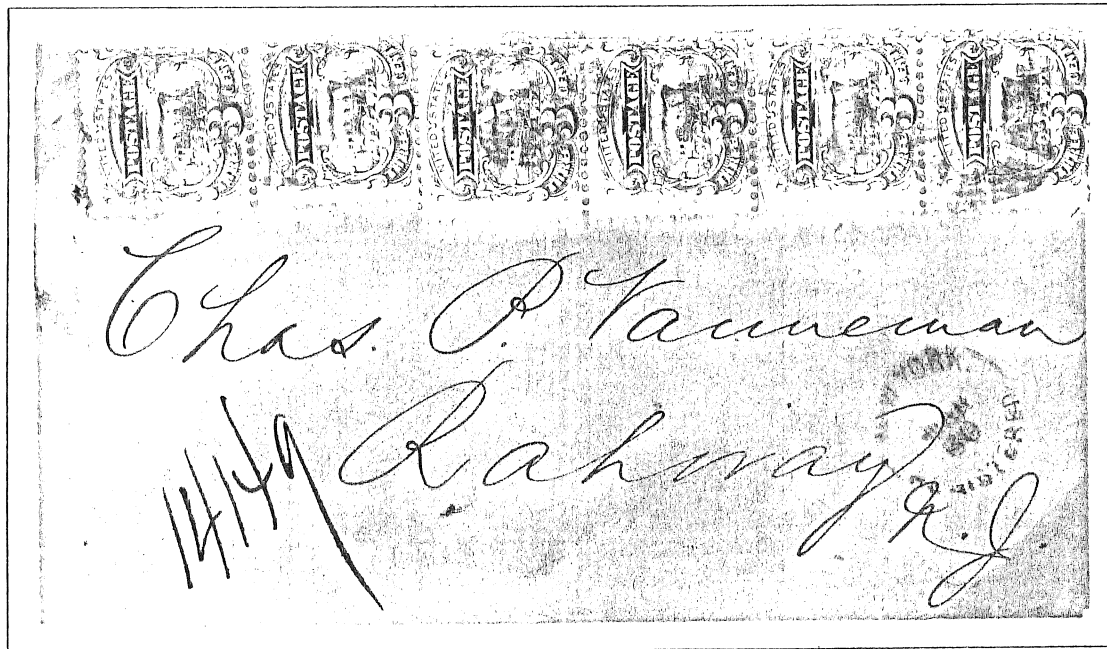
VERTICAL TWO-THIRDS TIED TO A COMPLETE LURAY, VIRGINIA TAX NOTICE PAYING THE 2-CENT RATE FOR PRINTED MATTER. THESE DOCUMENTS CONTAIN THREE FULLY PRINTED PAGES PLUS AN OUTER ONE-THIRD PAGE AS SHOWN. ● ●

SEVERAL PORTIONS OF LURAY NOTICES EXIST WITH TWO-THIRDS OF ONE STAMP AND OTHERS WITH ONE-THIRD EACH FROM TWO ADJOINING STAMPS. AN EXAMPLE OF THE LATTER IS SHOWN BELOW.

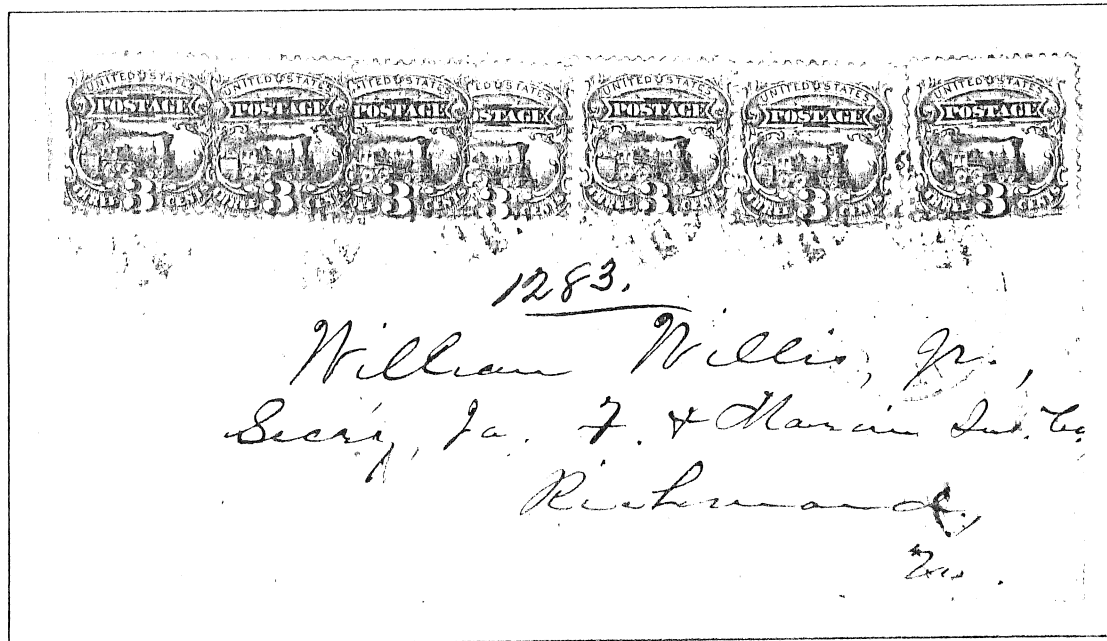


REGISTERED MAIL

IN 1869 THE REGISTRY FEE FOR DOMESTIC LETTERS WAS FIFTEEN CENTS.



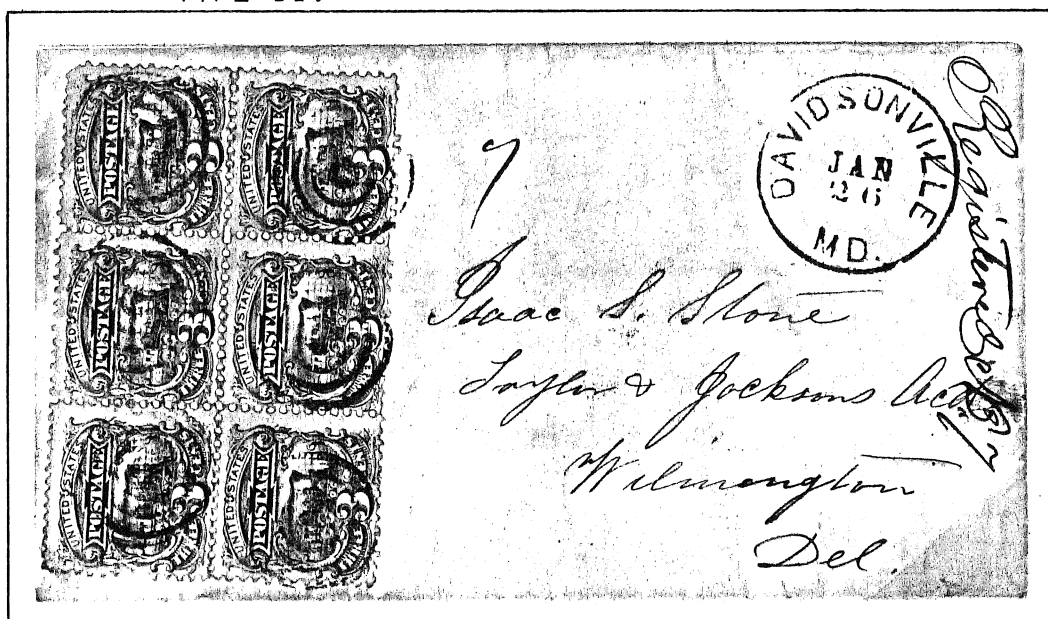
SINGLE WEIGHT. REGISTERED AT NEW YORK CITY,  
MARCH 30, POSSIBLY 1869.



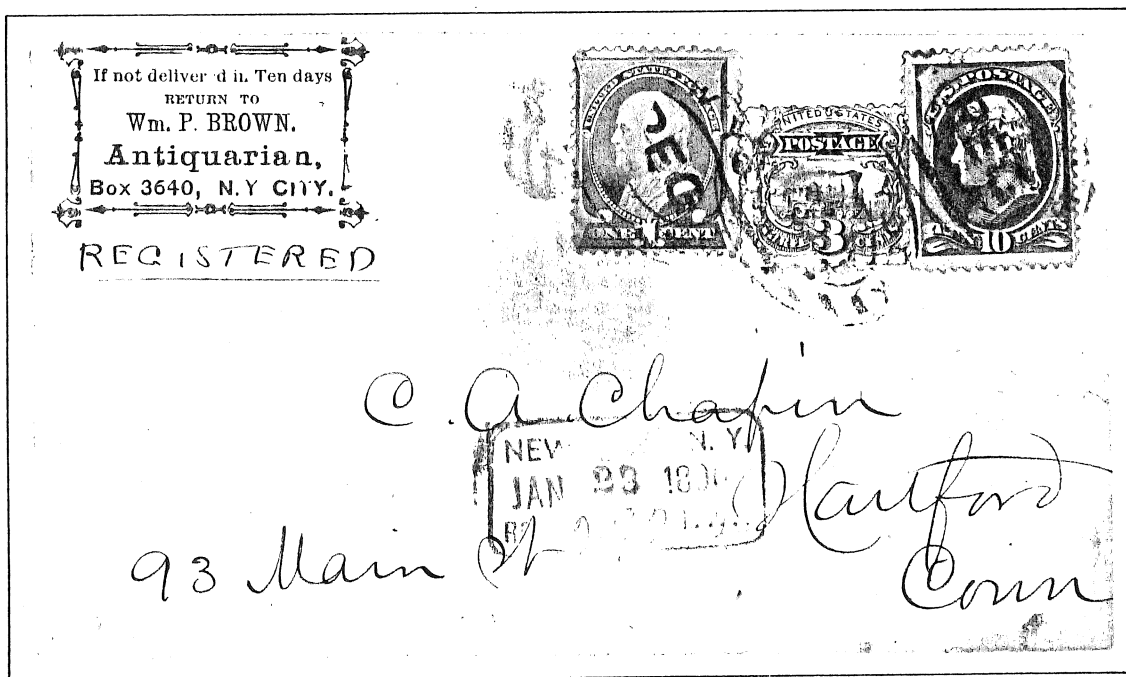
DOUBLE WEIGHT. REGISTERED JUNE 23, 1869 AT  
LOOKOUT STATION, GEORGIA.



REGISTERED AT NEW ORLEANS ON JAN. 26,  
PROBABLY 1870, WITH 3-CENT AND 15-CENT  
TYPE II.



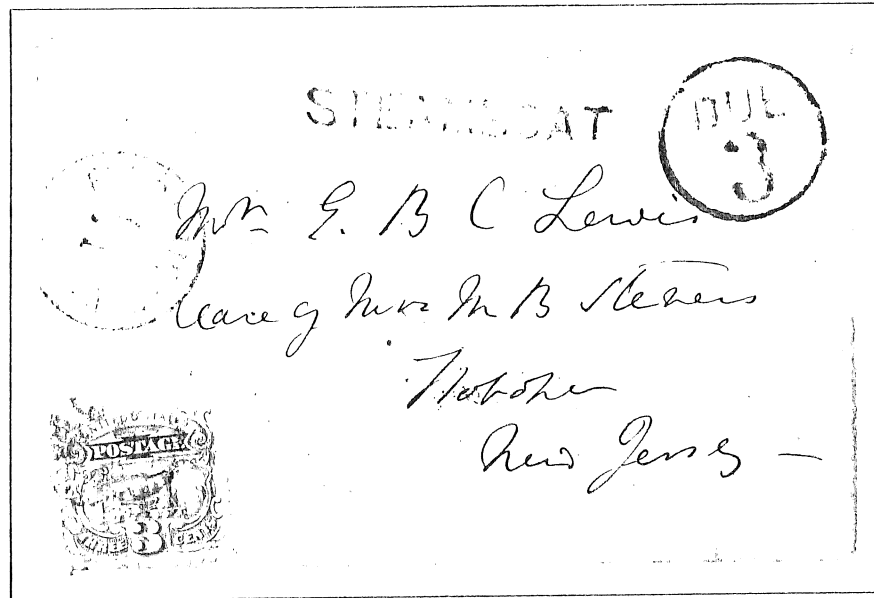
BLOCK OF SIX PAYING SINGLE WEIGHT POSTAGE AND REGIS-  
TRY FEE AT DAVIDSONVILLE, MARYLAND ON JAN. 26, PROB-  
ABLY 1870.



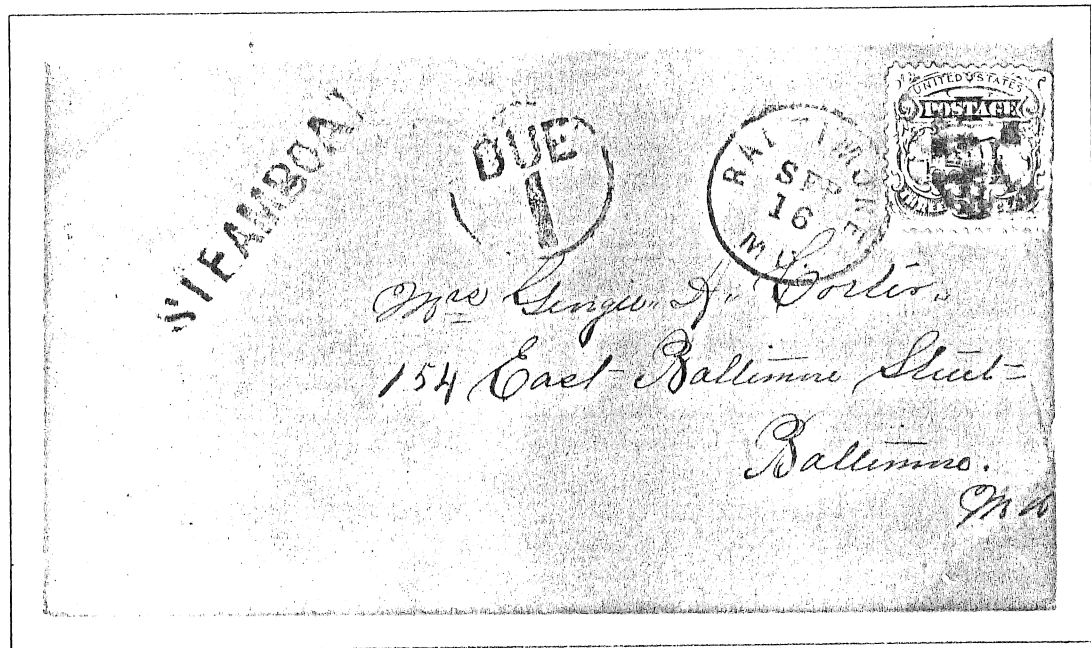
USED IN 1890 WITH 1-CENT AND 10-CENT BANKNOTES TO PAY  
DOUBLE THE TWO CENTS DOMESTIC POSTAGE RATE PLUS TEN  
CENTS DOMESTIC REGISTRY FEE THEN IN EFFECT.

# STEAMBOAT USAGE

THE STEAMBOAT RATE DURING THE 1869 PERIOD WAS "DOUBLE POSTAGE".

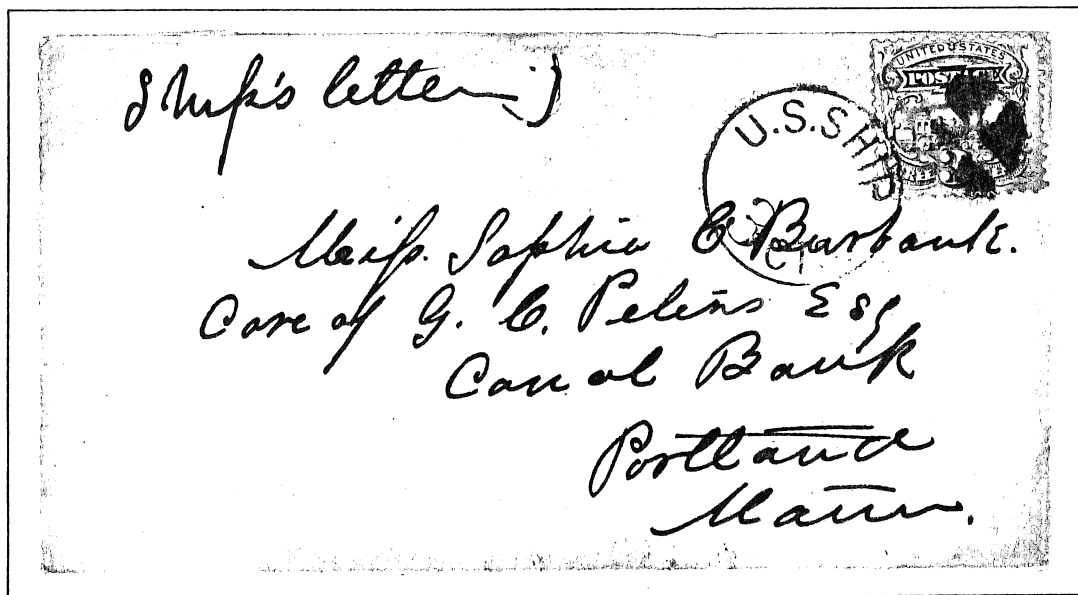


PROPER POSTAGE FOR THIS LETTER WAS TWICE THE THREE-CENT RATE OR SIX CENTS. IT THUS BEARS A "DUE 3" MARKING.

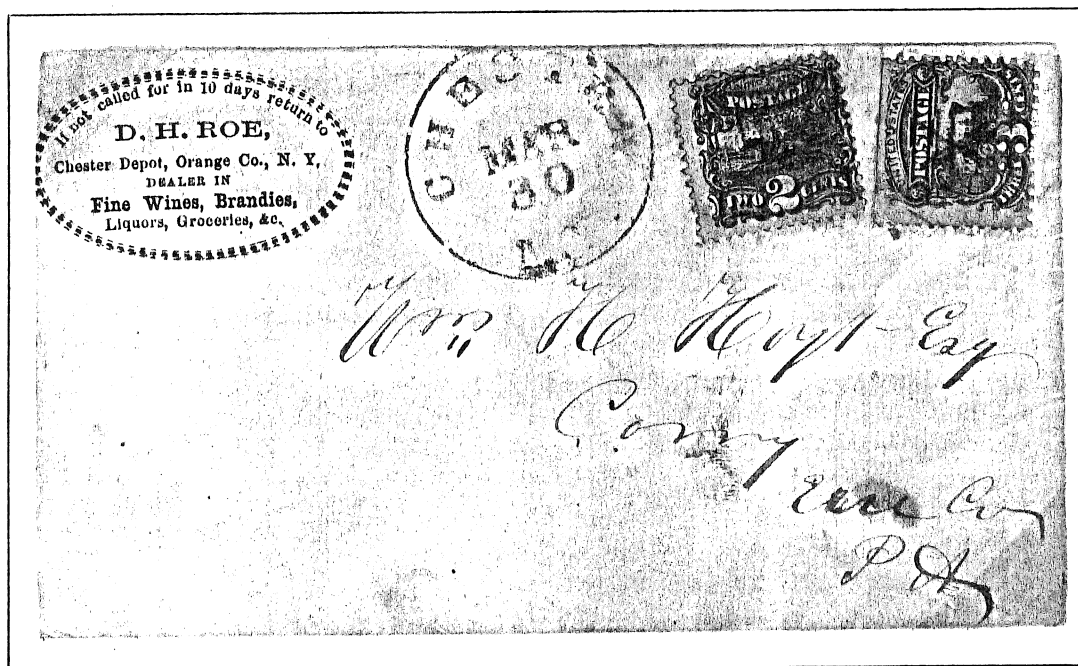


POSTED FROM A STEAMBOAT AT BALTIMORE AND ADDRESSED TO A STREET ADDRESS, THIS LETTER WAS CHARGED DOUBLE THE TWO-CENT CARRIER RATE, HENCE THE "DUE 1".



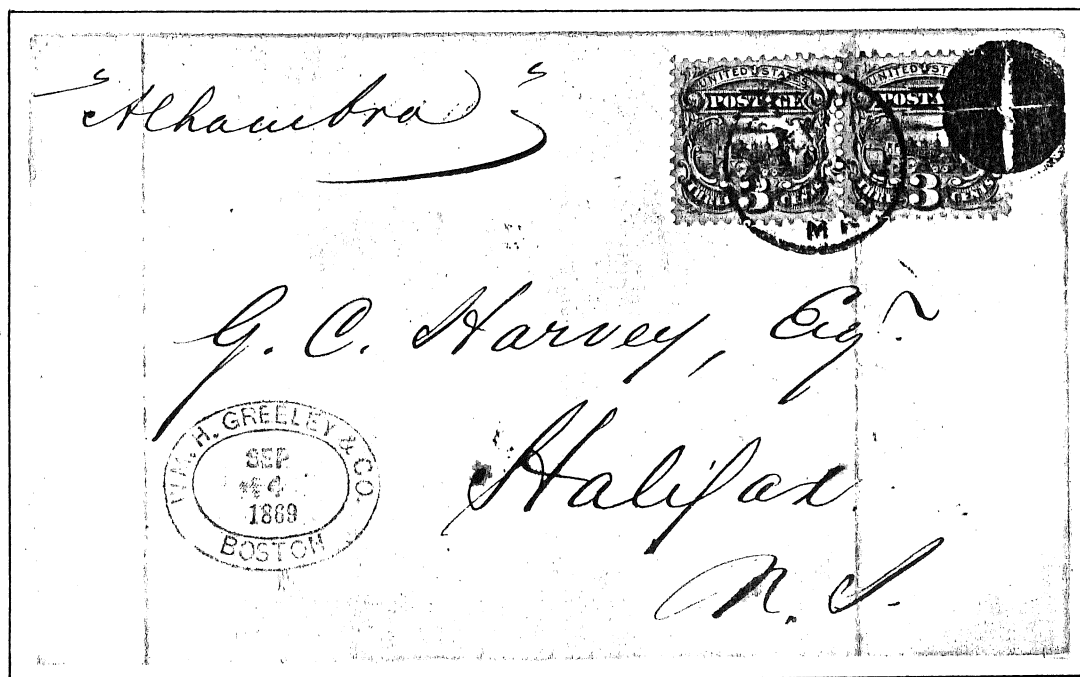


MAIL POSTED AT SEA BY U.S. NAVAL PERSONNEL PAID THE DOMESTIC 3-CENT RATE. THE "U.S. SHIP" HANDSTAMP USED ON THIS LETTER IS A HOLDOVER FROM THE CIVIL WAR PERIOD.

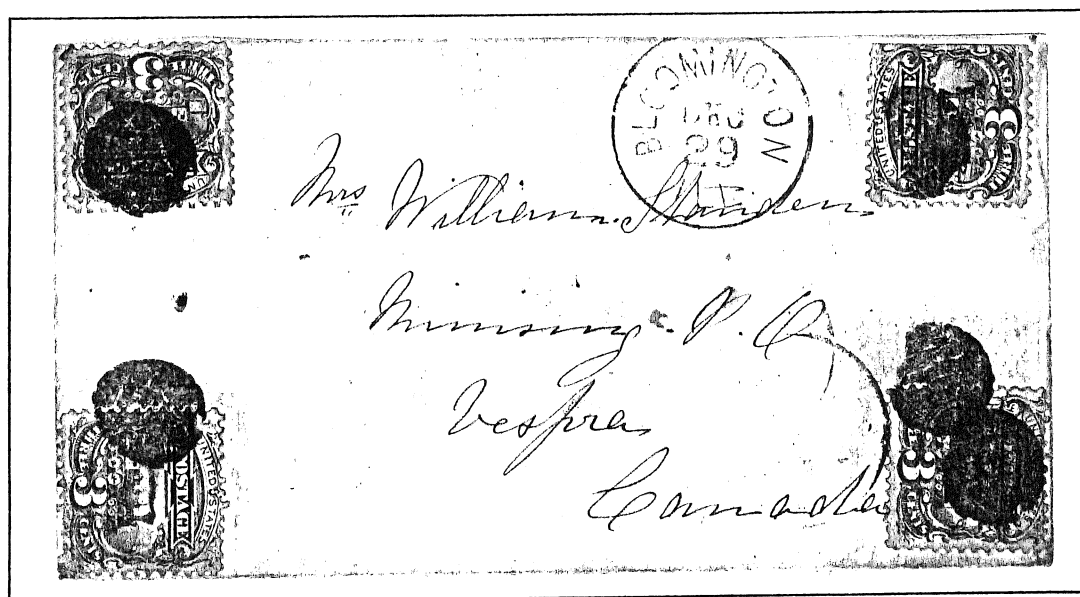


FIVE-CENT SHIP RATE. THIS LETTER TRAVELED FROM CHESTER, N.Y. TO CORRY, PA. VIA THE HUDSON RIVER, ERIE CANAL AND LAKE ERIE. COMBINATION USAGE WITH 2-CENT 1869.

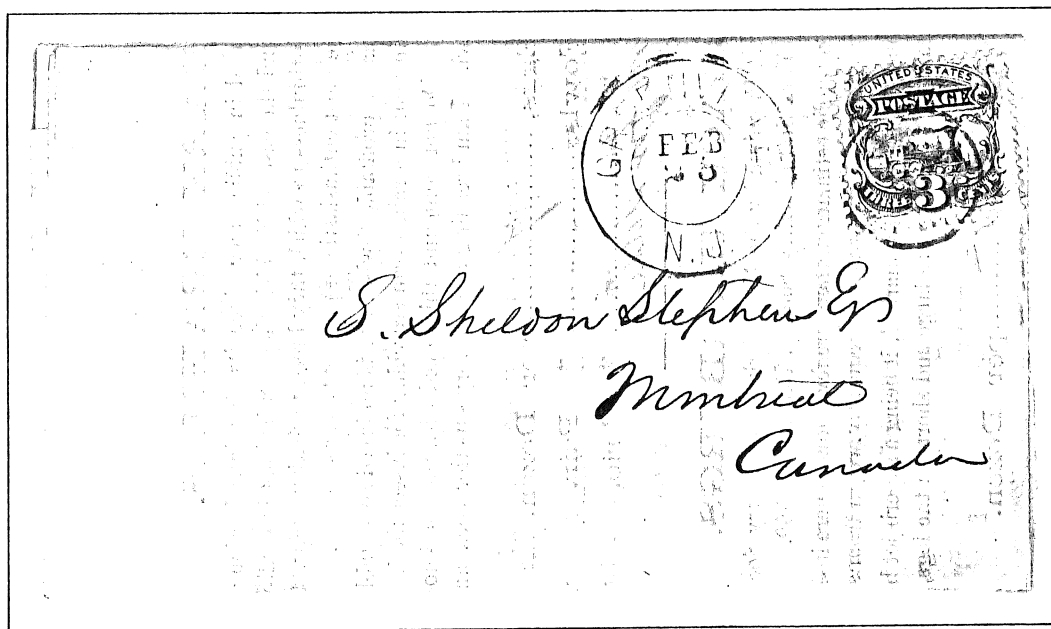
# FOREIGN USAGES



SINGLE WEIGHT LETTERS TO CANADA IN 1869 REQUIRED SIX CENTS POSTAGE. FOLDED LETTER FROM BOSTON TO HALIFAX, NOVA SCOTIA, SEPTEMBER 1869.

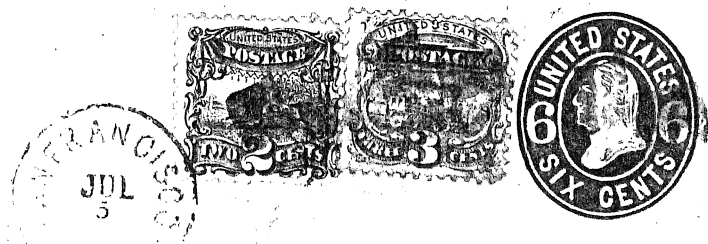


DOUBLE WEIGHT. POSTED AT BLOOMINGTON, ILLINOIS DECEMBER 29, 1869. BACKSTAMPED BARRIE, ONTARIO AND MINESING, C.W., BOTH DECEMBER 31.



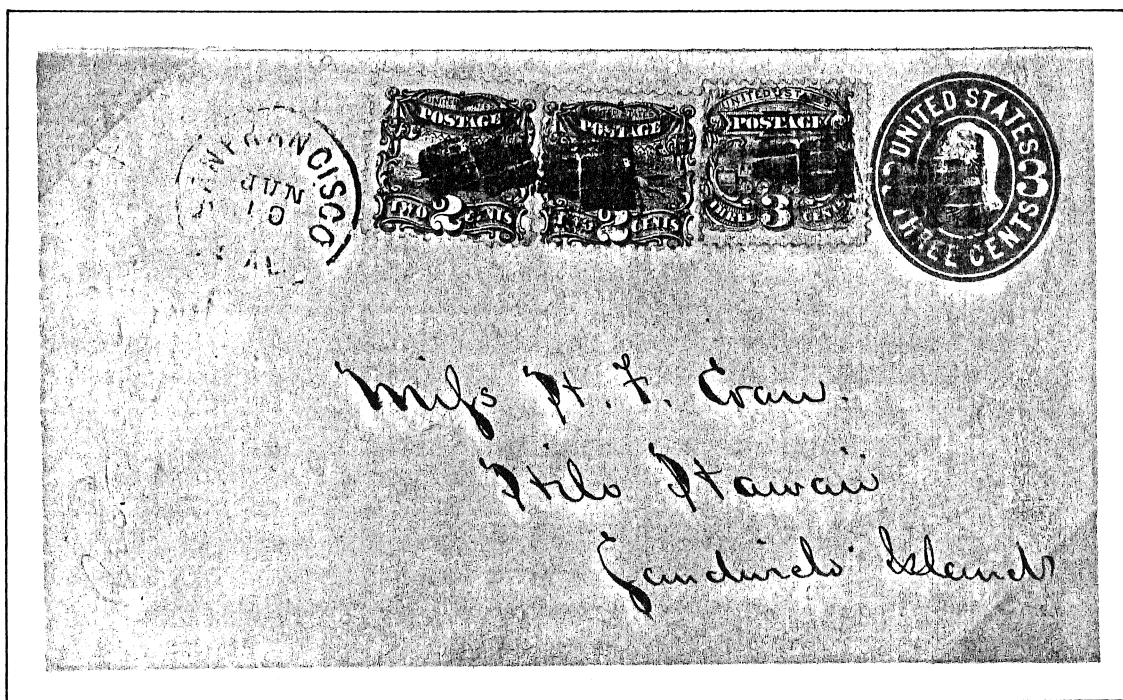
CIRCULAR ADDRESSED TO CANADA IN FEBRUARY, 1870. THE POSTAGE RATE TO CANADA FOR NEWSPAPERS, UNSEALED CIRCULARS AND OTHER PRINTED MATTER WAS TWO CENTS. HOWEVER, IF THE PRINTED MATTER CONTAINED A HANDWRITTEN MESSAGE, IT WAS CONSIDERED A LETTER AND THE REGULAR POSTAGE RATE APPLIED. THIS CIRCULAR DOES CONTAIN A HANDWRITTEN MESSAGE AND IS THEREFORE A THREE-CENT UNDERPAYMENT OF THE SIX-CENT LETTER RATE TO CANADA.

If not delivered within 10 days, to be returned to

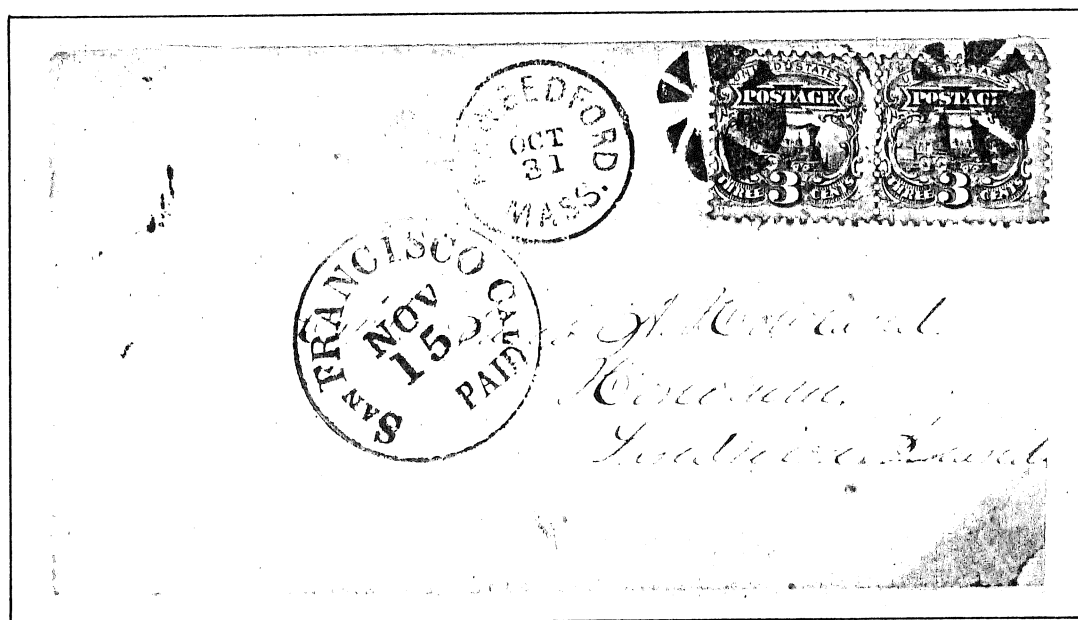


Mr. H. Nathan J. Ho  
Victoria  
V. I. B. C.

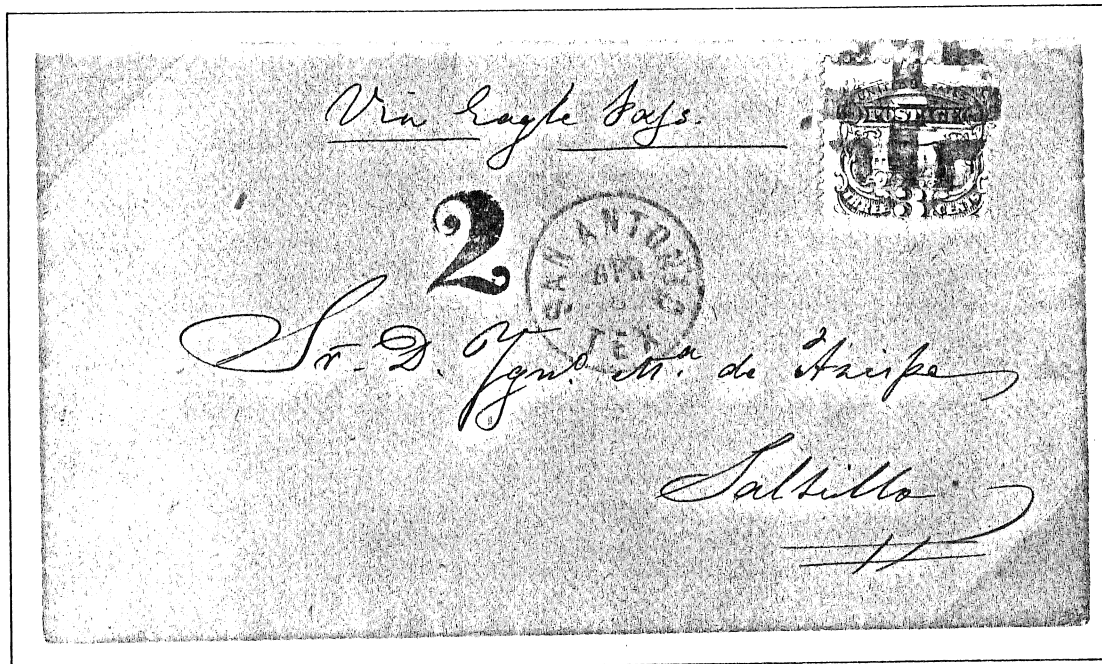
ONE-CENT OVERPAYMENT TO VICTORIA, VANCOUVER ISLAND. THE POSTAGE RATE TO BRITISH COLUMBIA WAS 10-CENTS FOR A SINGLE WEIGHT LETTER UNTIL JULY, 1870 WHEN THE 6-CENT RATE BECAME EFFECTIVE.



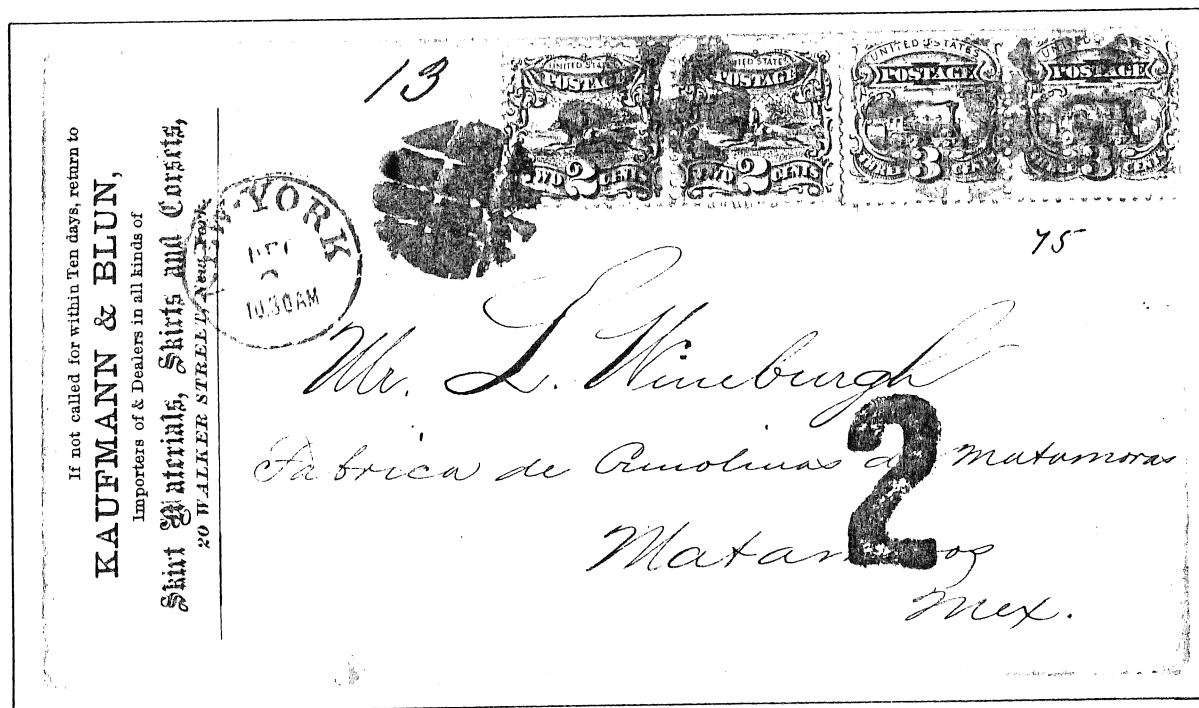
USED ON 3-CENT ENTIRE WITH TWO 2-CENT 1869 SINGLES PAYING TEN CENTS RATE TO HAWAII EFFECTIVE SEPTEMBER, 1867. BY AMERICAN PACKET FROM SAN FRANCISCO IN JUNE, 1870.



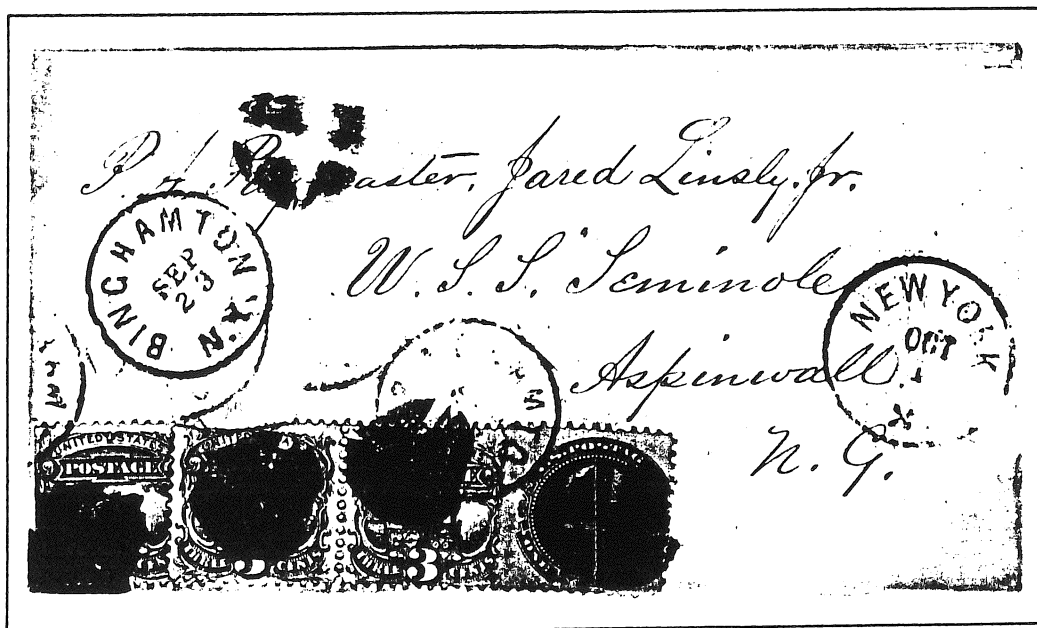
PAIR PAYING SIX CENTS TREATY RATE EFFECTIVE JULY, 1870 TO HONOLULU. COVER DATE IS PROBABLY 1870.



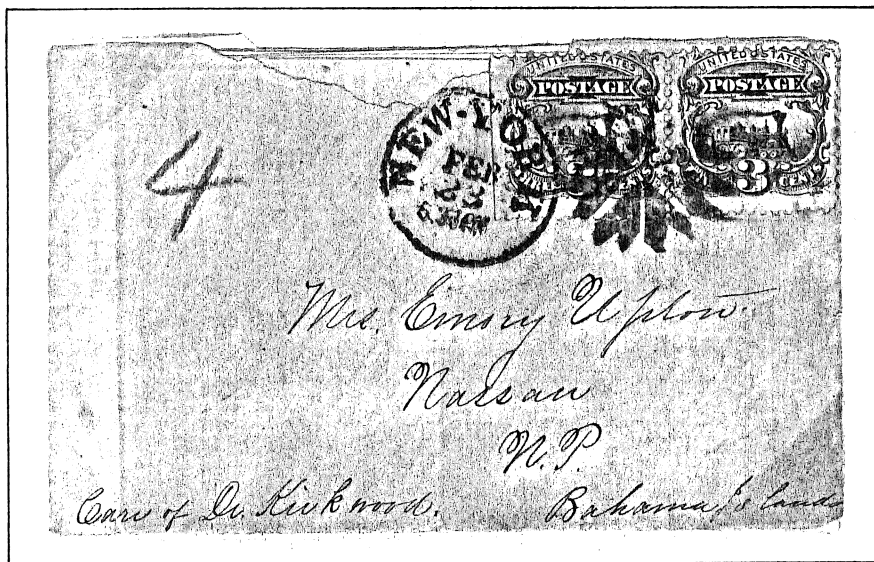
OVERLAND USAGE FROM SAN ANTONIO, TEXAS TO SALTILLO, MEXICO, PROBABLY 1870, PAYING U.S. DOMESTIC RATE TO THE FRONTIER (EAGLE PASS, TEXAS). TWO REALS DUE FOR MEXICAN TRANSIT.



PAIR OF TWO-CENT AND THREE-CENT 1869'S PAYING 10-CENT RATE FROM NEW YORK TO MATAMOROS, MEXICO BY SEA IN DECEMBER, PROBABLY 1869. MEXICAN TWO REALS DUE MARKING FOR INLAND POSTAGE.



USAGE WITH ONE-CENT 1869 TO PAY 10 CENT RATE TO  
 ASPINWALL, NEW GRANADA (COLON, PANAMA). POSTED  
 AT BINGHAMPTON, N.Y. SEPT. 23, 1869, CARRIAGE  
 WAS BY PACIFIC MAIL STEAMSHIP COMPANY STEAMER  
 "ARIZONA" WHICH DEPARTED NEW YORK OCT. 1, 1869.



USAGE TO NASSAU, BAHAMA ISLANDS. DIRECT  
 STEAMER RATE FROM NEW YORK WAS THREE CENTS PER  
 HALF OUNCE TO FRONTIER. THIS 1870 LETTER PAID  
 DOUBLE WEIGHT POSTAGE. BLUE MANUSCRIPT "4" IS  
 BAHAMAN DUE MARKING FOR INLAND POSTAGE.

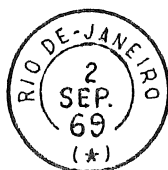


*Cover @ Nancy Poli  
for repair*

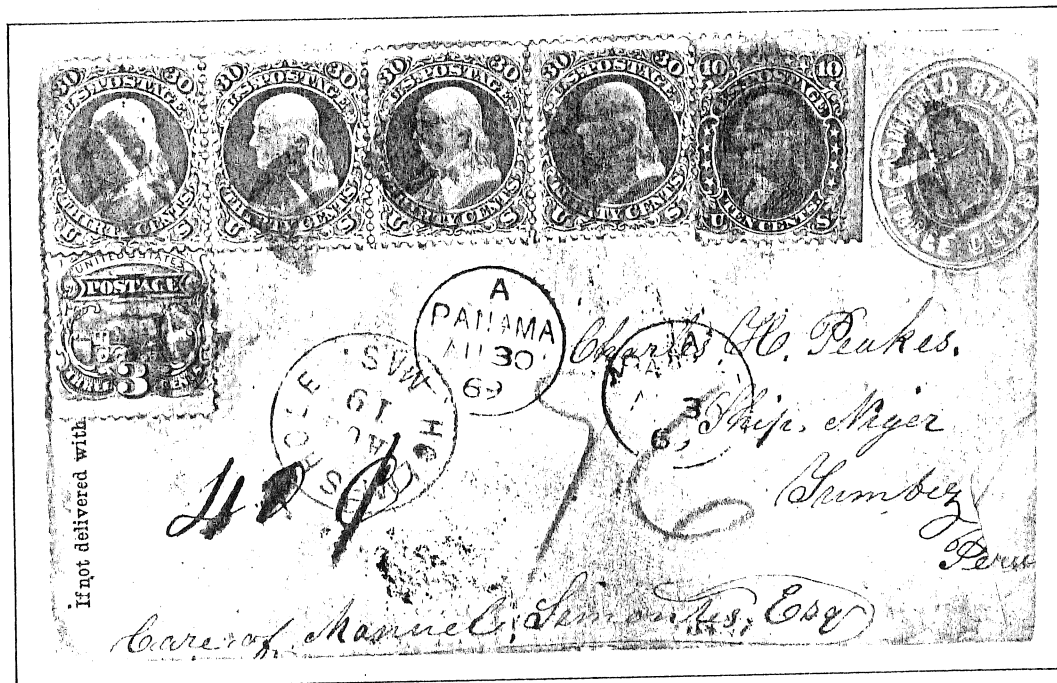
1870 USAGE WITH GRILLED 15-CENT OF 1867 TO SANTO DOMINGO (ISLAND OF HISPANIOLA). EIGHTEEN CENTS POSTAGE PAID RATE FOR TRANSIT TO WEST INDIES VIA BRITISH MAILS. HOWEVER, NEW YORK DEPARTURE WAS MAY 4 ON THE STEAMSHIP "TYBEE", A DIRECT MAIL SERVICE REQUIRING ONLY TEN CENTS POSTAGE.



BLOCK OF FOUR USED FROM FORT GAINES, GEORGIA TO RIO DE JANEIRO, BRAZIL. TWO-CENT OVERPAYMENT OF THE TEN-CENT RATE. POSTED AUGUST 16, 1869 WITH NEW YORK DEPARTURE ON THE 23RD. RIO ARRIVAL SEPTEMBER 2.



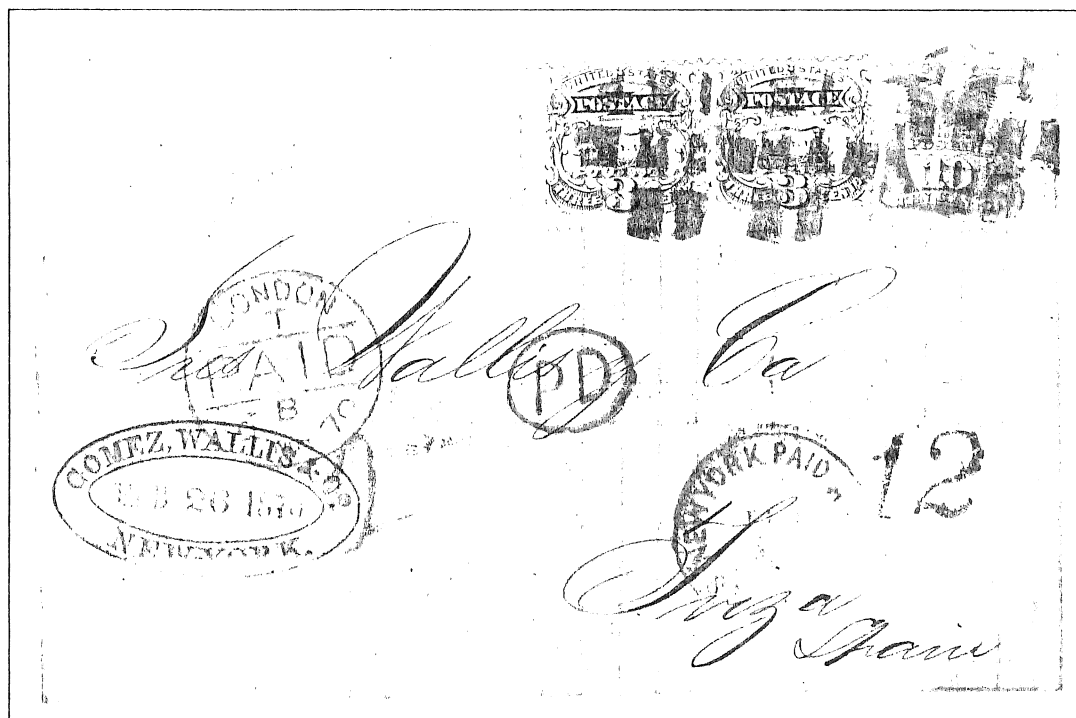
BACKSTAMP



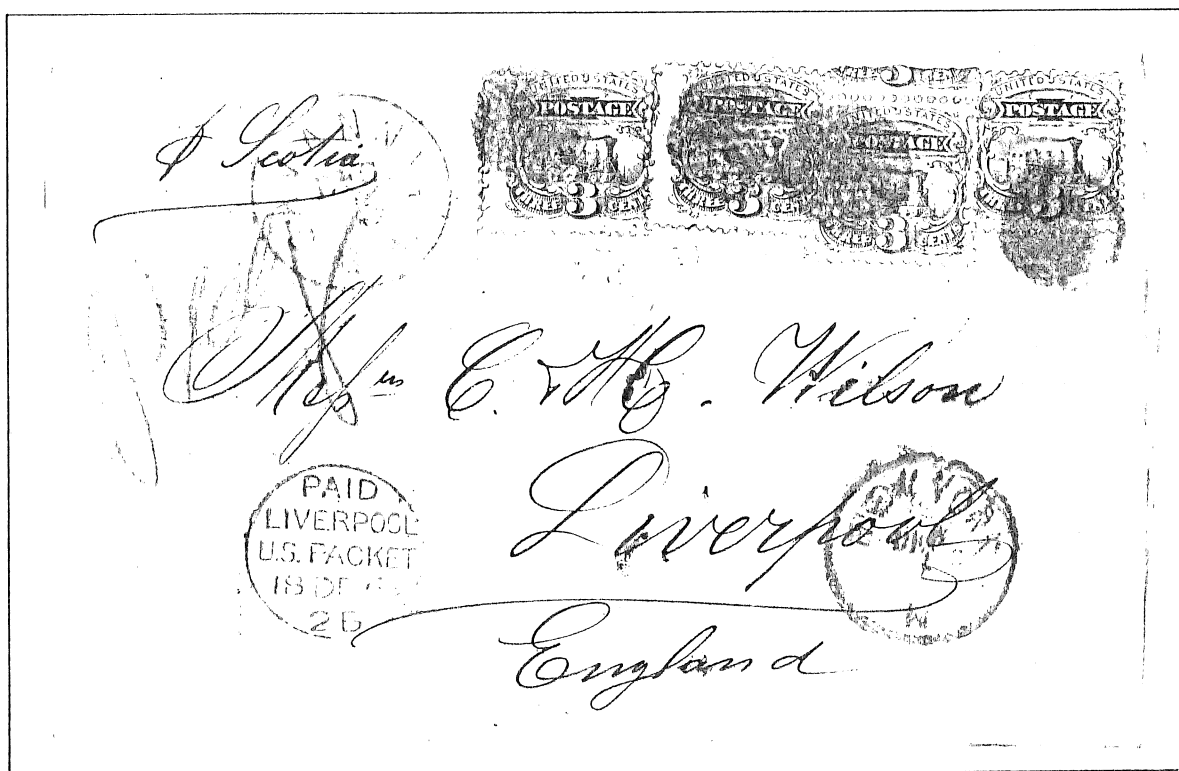
USAGE TO PERU. POSTED AT HOLMES HOLE, MASSACHUSETTS AUGUST 19, 1869. POSTAGE OF \$1.36 PAYS FOUR TIMES THE 34-CENT RATE. CARRIED IN BRITISH MAIL VIA PANAMA AND HANDLED BY BRITISH ENTRY POST OFFICE AT PAITA, PERU. CREDIT OF 40¢ TO U.S. REMAINING 96¢ PAID BRITISH SEA POSTAGE, A PANAMA TRANSIT FEE AND PERUVIAN INLAND POSTAGE. FORWARDED FROM PAITA TO TUMBEZ, PERU.



BACKSTAMP



FOREIGN MAIL "VIA ENGLAND" WAS ALSO REDUCED BY 6 CENTS ON JANUARY 1, 1870. THIS FOLDED LETTER TO TIRZA, SPAIN ENTERED U.S. MAILES IN LATE FEBRUARY, 1870 AND PAID THE NEW 16-CENT RATE WITH A 10-CENT AND PAIR OF 3-CENT 1869 STAMPS. U.S. POSTAL MARKINGS INCLUDE A CIRCULAR NEW YORK PAID BRITISH TRANSIT AND A "12" CENT FOREIGN POSTAGE CREDIT. A MANUSCRIPT "2" DENOTING THE SEA POSTAGE WAS APPARENTLY APPLIED AT LONDON ALONG WITH AN OVAL "PD" TO DESTINATION. INDISTINCT BACKSTAMPS INCLUDE A BLUE DOUBLE CIRCLE (POSSIBLY CALAIS) AND BLACK BARCELONA CDS DATED MARCH 12, 1870. AN INSIDE NOTATION BY ADDRESSEE REPORTS A MARCH 16 RECEIPT.



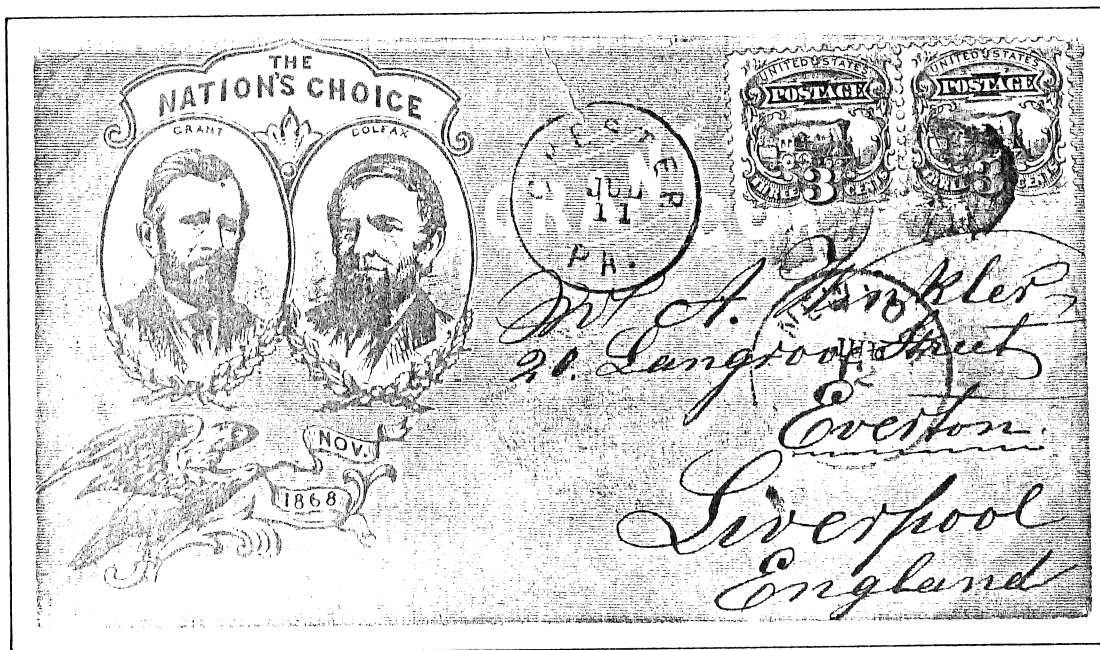
SINGLE WEIGHT FOLDED LETTER POSTED SAVANNAH, GEORGIA  
DECEMBER 5, 1869 PAYING 12-CENT RATE TO GREAT BRITAIN  
EFFECTIVE JANUARY 1, 1868. DEPARTURE FROM NEW YORK  
DECEMBER 8TH ON CUNARD SHIP "SCOTIA" AND LIVERPOOL  
ARRIVAL DECEMBER 18TH.



DOUBLE WEIGHT. POSTED AT PHILADELPHIA NOVEMBER 23, 1869. ARRIVED LONDON DECEMBER 4TH AND FORWARDED TO PARIS DECEMBER 5TH.



DOUBLE WEIGHT WITH HANDSTAMP OF "B.F. STEVENS, U.S. DESPATCH AGENT, LONDON." APRIL 1869 USAGE WITH 12-CENT STAMP OF THE 1867 ISSUE ON 3-CENT ENTIRE OF 1864-65.

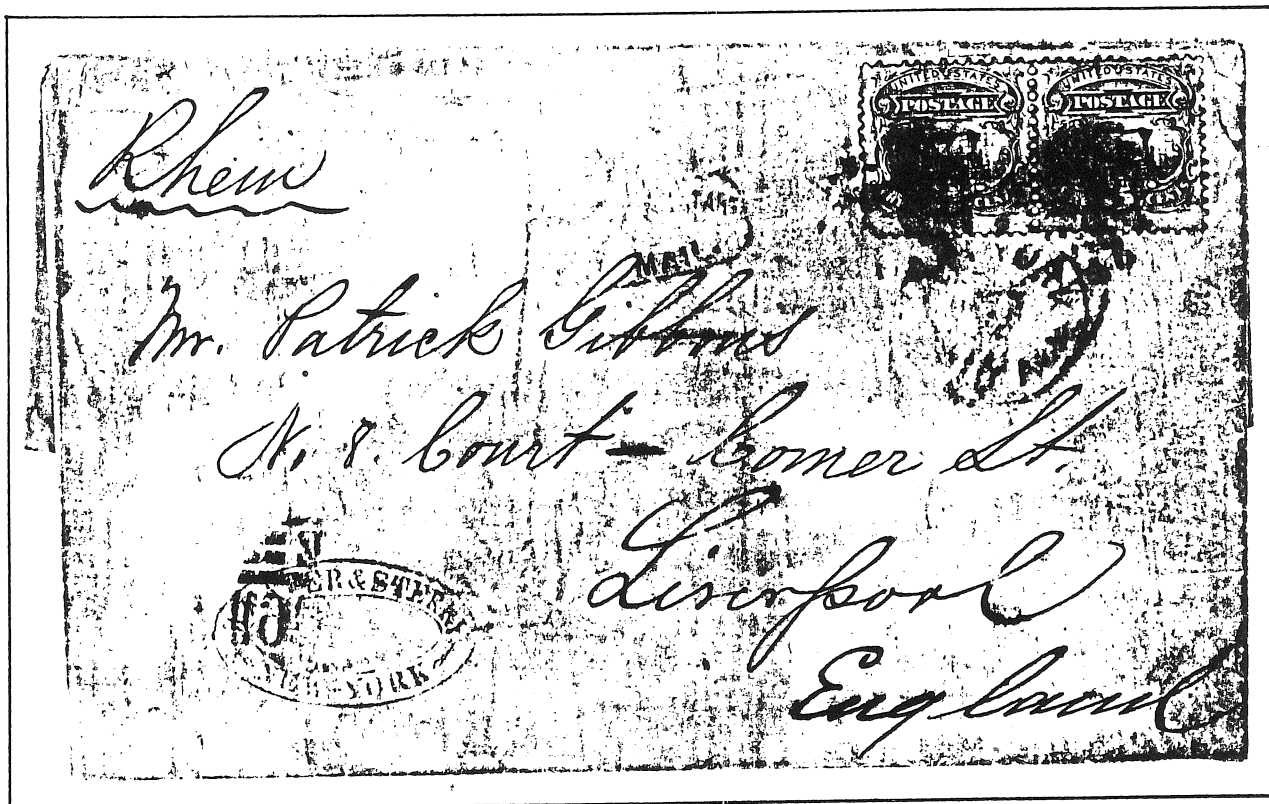


PAIR ON GRANT-COLFAX CAMPAIGN COVER PAYING REDUCED 6-CENT RATE TO GREAT BRITAIN EFFECTIVE JANUARY 1, 1870. POSTED AT CHESTER, PA. JULY 11TH AND HANDLED BY NEW YORK TRANSIT OFFICE JULY 12, 1870. ARRIVED LIVERPOOL JULY 23RD.



BACKSTAMPS

# SUPPLEMENTARY MAIL



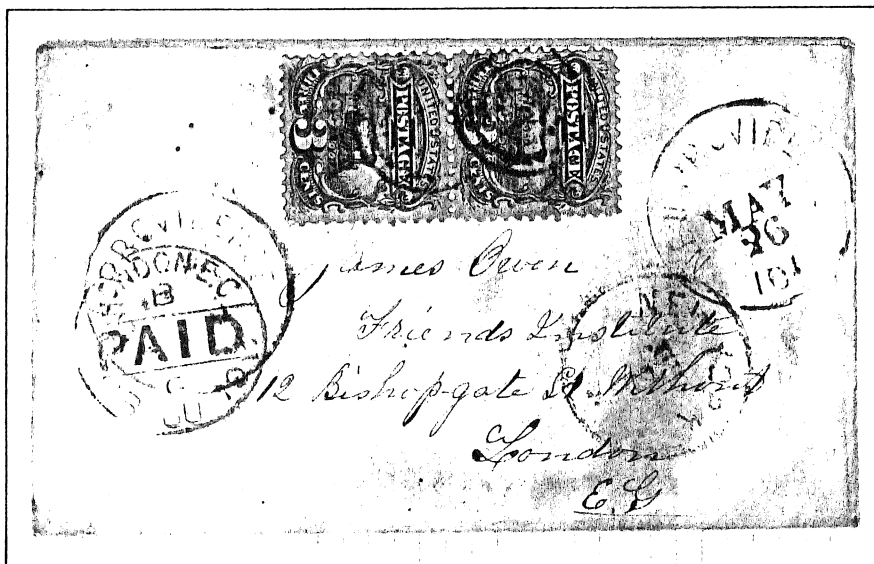
TYPE A SUPPLEMENTARY MARKING ON FEBRUARY, 1870 LETTER TO LIVERPOOL. AFTER HOURS HANDLING OF FOREIGN MAIL FOR CARRIAGE ON A PARTICULAR SHIP WAS CHARGED DOUBLE RATE. EXTRA RATE CHARGE, IN THIS CASE SIX CENTS, COLLECTED IN MONEY. AFTER 1872 DOUBLE POSTAGE APPLIED TO LETTERS.



TYPE A MARKING

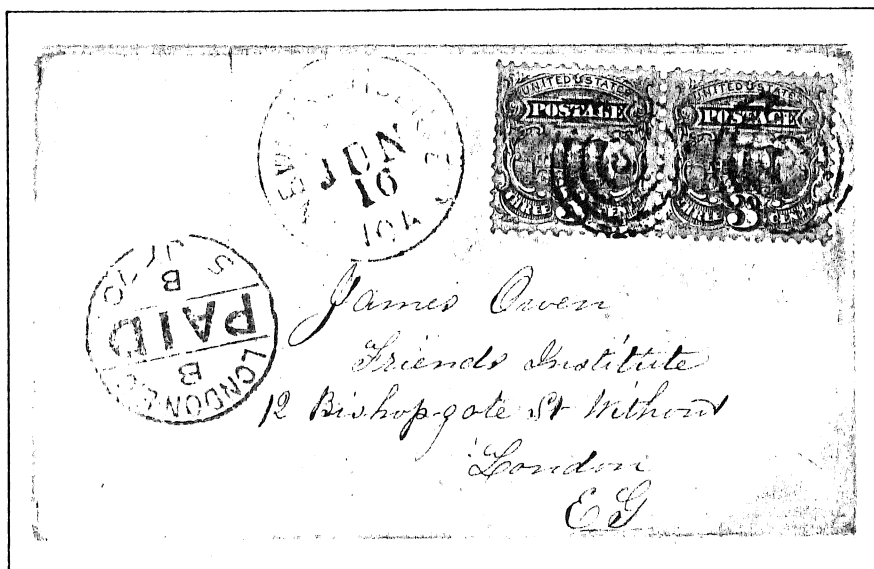
BACKSTAMPS





BACKSTAMP

POSTED AT NEW PROVIDENCE, IOWA ON MAY 26, 1870 AND BACK-  
 STAMPED AT HAMILTON, ONTARIO MAY 31ST. RE-ENTERED UNITED  
 STATES AND STAMPED AT NEW YORK EXCHANGE OFFICE JUNE 2ND.  
 ARRIVED LONDON JUNE 13TH.



BACKSTAMP

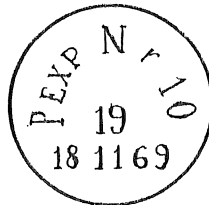
CHICAGO EXCHANGE  
 OFFICE

POSTED AT NEW PROVIDENCE JUNE 16, 1870. CHICAGO PACKET MARK-  
 ING ON BACK INDICATES PROBABLE CONVEYANCE TO BRITAIN BY THE  
 CANADIAN ALLAN LINE. ARRIVED LONDON JULY 5TH.



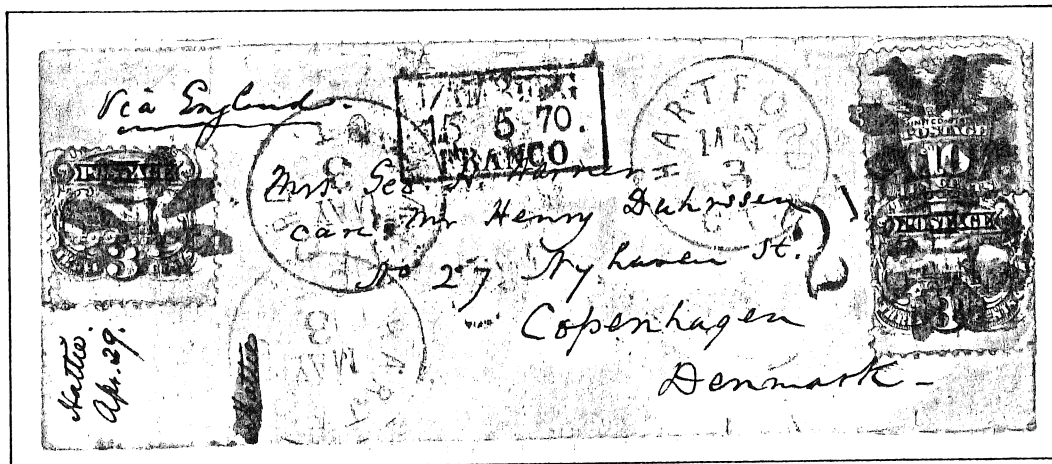
USAGE WITH ONE-CENT AND TEN-CENT 1869 STAMPS FROM COUNCIL BLUFFS, IOWA TO LUND, SWEDEN. TEN CENTS PAID THE RATE TO GERMANY AND FOUR CENTS THE GERMAN RATE TO SWEDEN. POSTED OCTOBER 25, 1869. "4 CENTS" CREDIT TO GERMANY APPLIED AT NEW YORK. HAMBURG ENTRY NOV. 16 AND SWEDISH RECEIVING BACKSTAMP NOVEMBER 18.

4  
CENTS



HAMBURG  
16 11 69  
FRANCO

BACKSTAMP

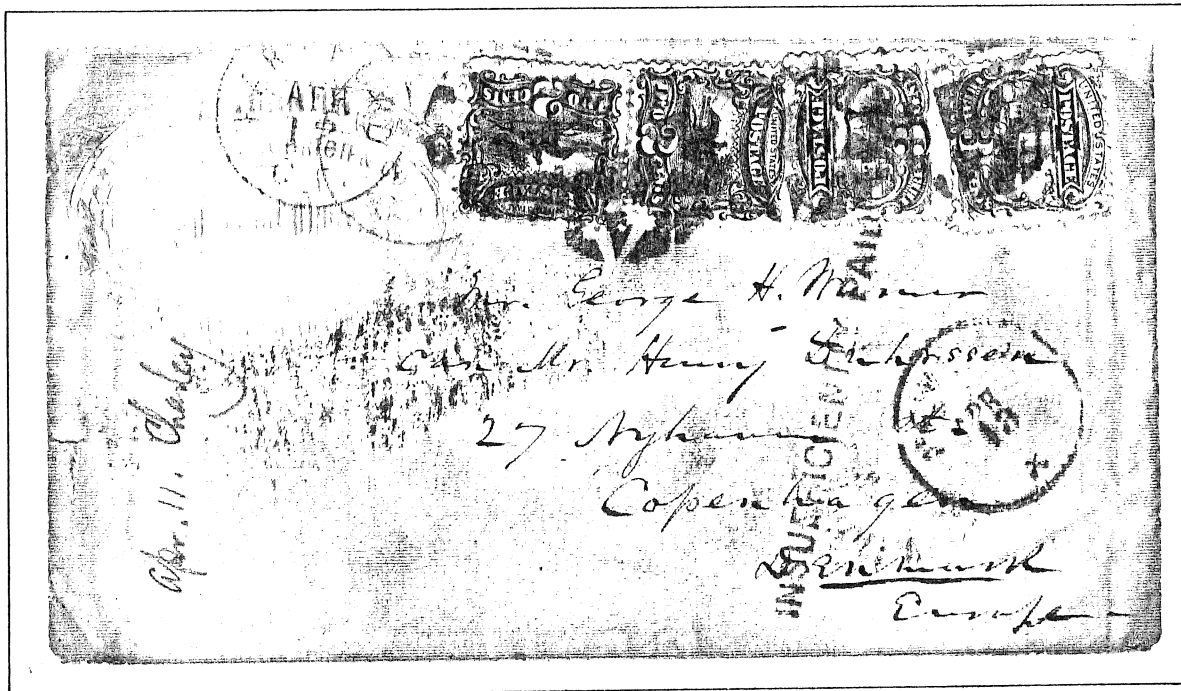


USAGE WITH 10-CENT 1869 TO DENMARK. THREE-CENT OVER-PAYMENT OF 13-CENT RATE. POSTED AT HARTFORD, CONNECTICUT ON MAY 3, 1870. AT NEW YORK A "2½" MARKING APPLIED AS CREDIT TO GERMANY. TRANSIT CLOSED MAIL DIRECT VIA ENGLAND. GERMAN ENTRY AT HAMBURG MAY 15. COPENHAGEN ARRIVAL MAY 16.



BACKSTAMPS

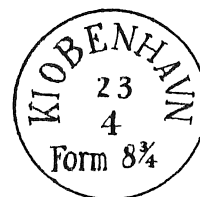




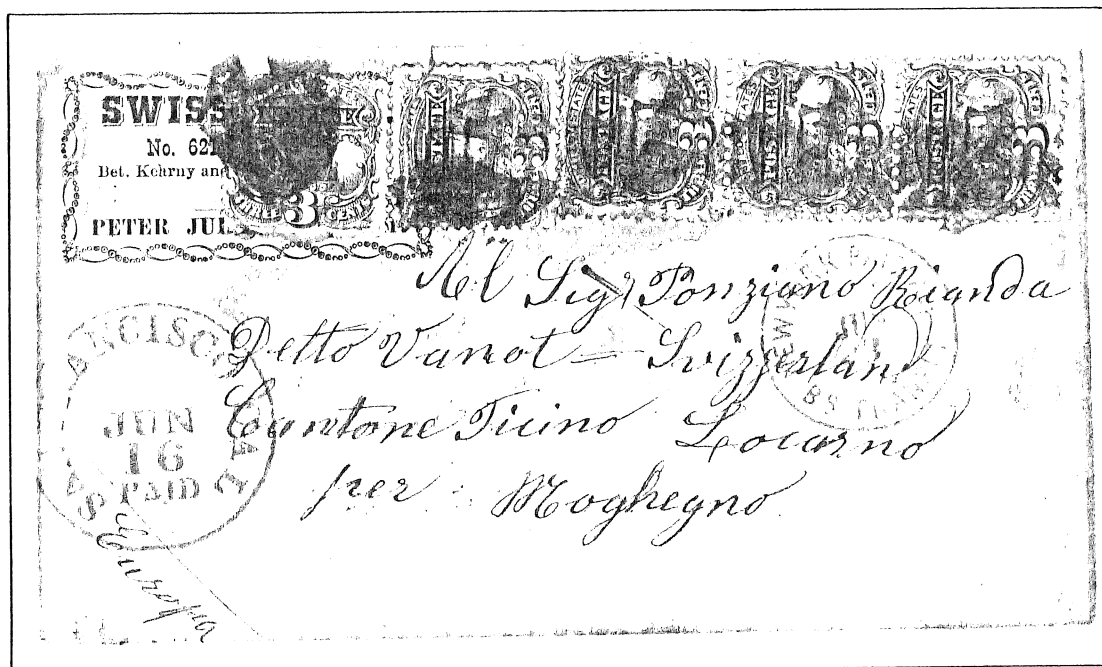
USAGE WITH 2-CENT 1869 TO COPENHAGEN. MARKINGS INCLUDE BLACK CIRCULAR NEW YORK X ON APRIL 13 (1870) AND "INSUFFICIENTLY PAID" FOR THREE-CENT UNDERPAYMENT OF RATE TO DENMARK. TRANSIT IN CLOSED MAIL VIA BELGIUM AND GERMANY WITH COPENHAGEN ARRIVAL MAY 23. MEANING OF MANUSCRIPT "5AP" IS UNKNOWN.

VERVIERS, B  
20/4 III  
COELN

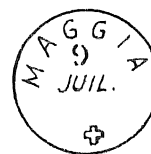
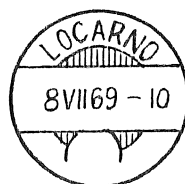
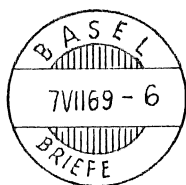
5-6-8



BACKSTAMPS

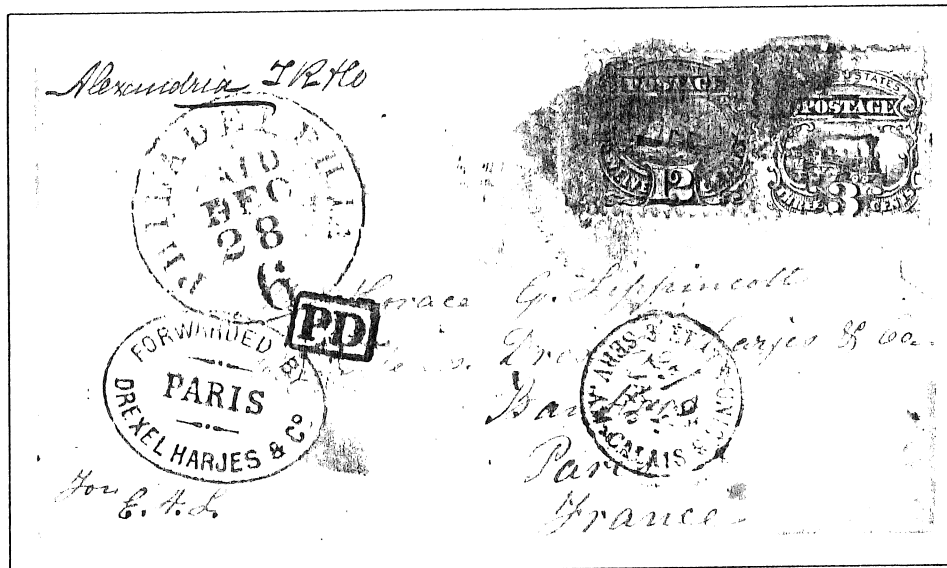


POSTED AT SAN FRANCISCO JUNE 16, 1869 PAYING 15-CENT RATE TO SWITZERLAND. RED NEW YORK PAID ALL BRITISH TRANSIT MARKING JUNE 23. ROUTING IN DIRECT CLOSED MAIL VIA ENGLAND. SWISS EXCHANGE OFFICE MARKING AT BASEL JULY 7. BACKSTAMPED LOCARNO JULY 8 AND MAGGIA, SWITZERLAND JULY 9.

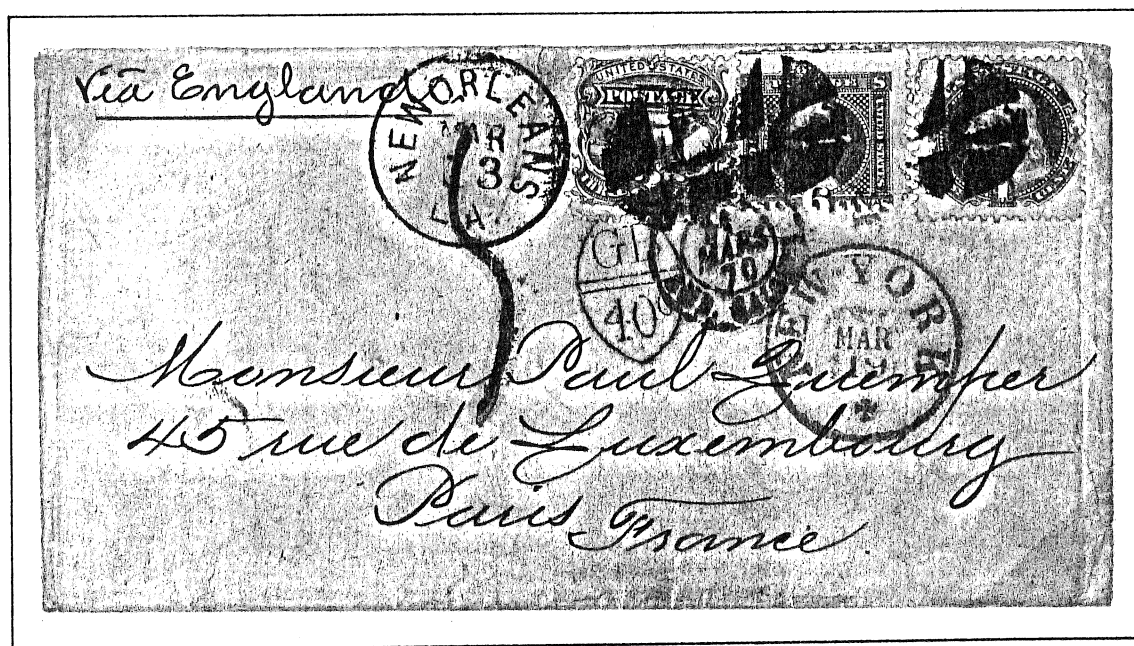


BACKSTAMPS



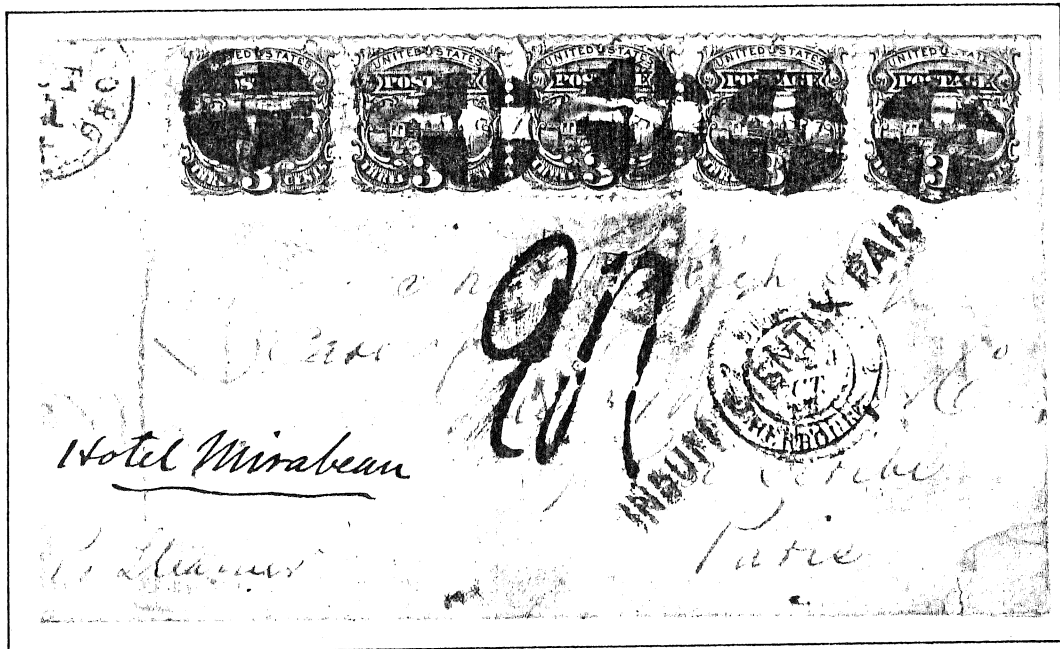


USAGE WITH 12-CENT 1869 STAMP TO FRANCE AND PRIVATELY FORWARDED TO EGYPT. PROCESSED AT THE PHILADLEPHIA EXCHANGE OFFICE DECEMBER 28, 1869, ONLY THREE DAYS BEFORE THE FRENCH TREATY EXPIRED. PROBABLE TRANSIT WAS THE CUNARD PACKET "RUSSIA" WHICH LEFT NEW YORK ON DECEMBER 29, 1869. ENTRY INTO FRANCE AT CALAIS ON JANUARY 5, 1870. A PRIVATE PARIS FORWARDER, DREXEL HARJES & CO., FORWARDED THE LETTER TO THEIR EGYPTIAN AGENT IN ALEXANDRIA, "TR & CO" (TODD, RATHBONE & CO.). ALEXANDRIA WAS THE MEDITERRANEAN EXCHANGE POINT FOR ALL MAILS INTO EGYPT UNTIL AND FOR SOME TIME AFTER THE SUEZ CANAL OPENING IN NOVEMBER 1869.



USAGE WITH ONE-CENT AND SIX-CENT 1869 TO FRANCE IN 1870. THIS LETTER PAID THE 10-CENT RATE FOR POST-TREATY DIRECT MAIL TO FRANCE. HOWEVER, IT TRAVELLED VIA OPEN MAIL TO ENGLAND AND COULD HAVE PAID ONLY FOUR CENTS. POSTED AT NEW ORLEANS ON MARCH 13, IT LEFT NEW YORK MARCH 19 AND WAS STAMPED GB/40C BY THE BRITISH. IT ENTERED FRANCE AT CALAIS ON MARCH 31 WHERE IT RECEIVED A 5 DECIME FRENCH DUE MARKING. BACKSTAMPS INCLUDE A BLUE NEW ORLEANS COMPANY MARKING AND RED LONDON MARCH 30 RECEIVING STAMP.



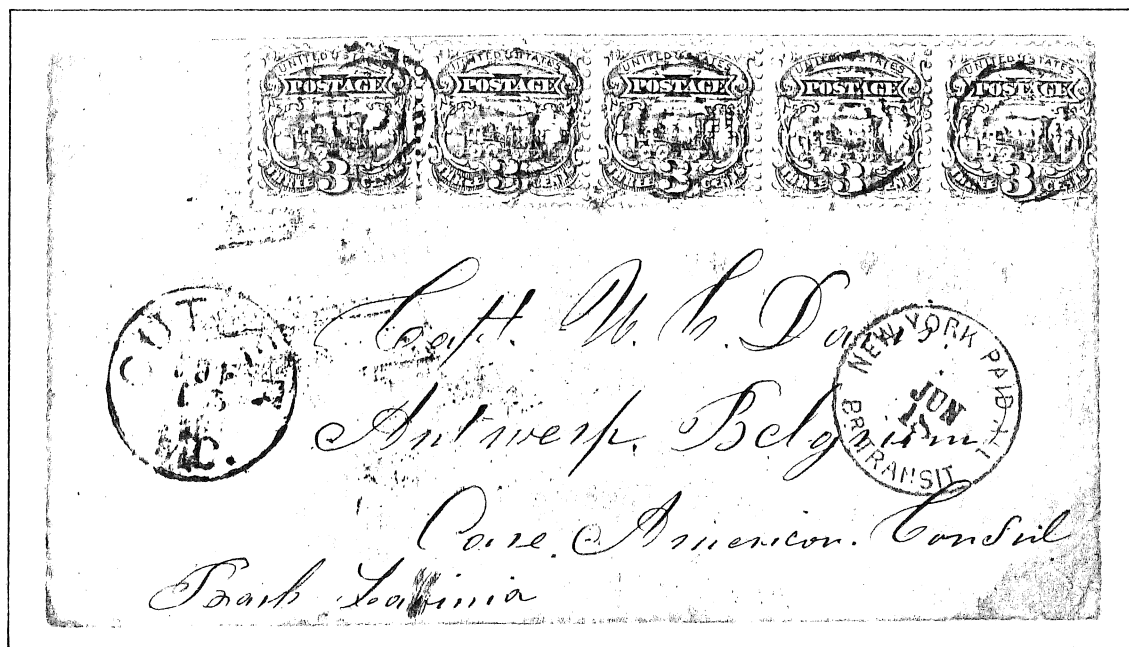


INSUFFICIENTLY PAID TO PARIS, OCTOBER 1870. FRENCH MARKINGS INCLUDE BLUE CHERBOURG ENTRY, BLUE "3/36" TRIPLE WEIGHT AND LARGE BLACK "24" DECIMES DUE. BACKSTAMPS ARE BLACK NEW YORK "X" AND BLACK "SHORT PAID" APPLIED IN PARIS BY MONROE & CO., A PRIVATE FORWARDING AGENT.

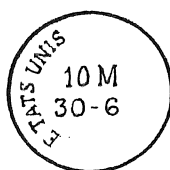


SHORT PAID

BACKSTAMPS

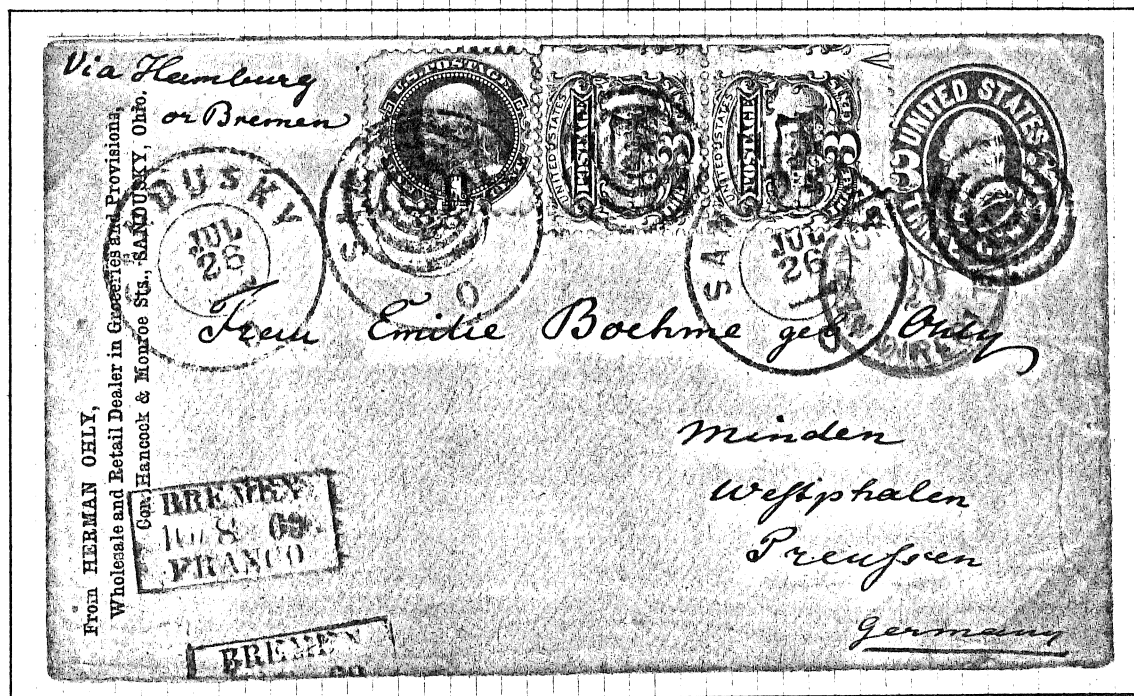


JUNE, 1870 USAGE TO BELGIUM. THIS LETTER OVERPAID BY FIVE CENTS THE BELGIAN RATE WHICH WAS REDUCED MARCH 15, 1870 FROM FIFTEEN TO TEN CENTS. POSTED AT CUTLER, MICH. (?) ON JUNE 13, IT RECEIVED THE RED NEW YORK EXCHANGE OFFICE PAID ALL BRITISH TRANSIT MARKING ON JUNE 18. DEPARTURE WAS ON THE NORTH GERMAN LLOYD STEAMER "DEUTCHLAND" WHICH ARRIVED AT SOUTHAMPTON JUNE 29. BELGIAN MARKINGS ON THE REVERSE RECORD A JUNE 30 RECEIPT AT ANTWERP (?) AND VERIFY BRITISH TRANSIT.

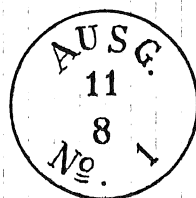


*Trans. Brit.*

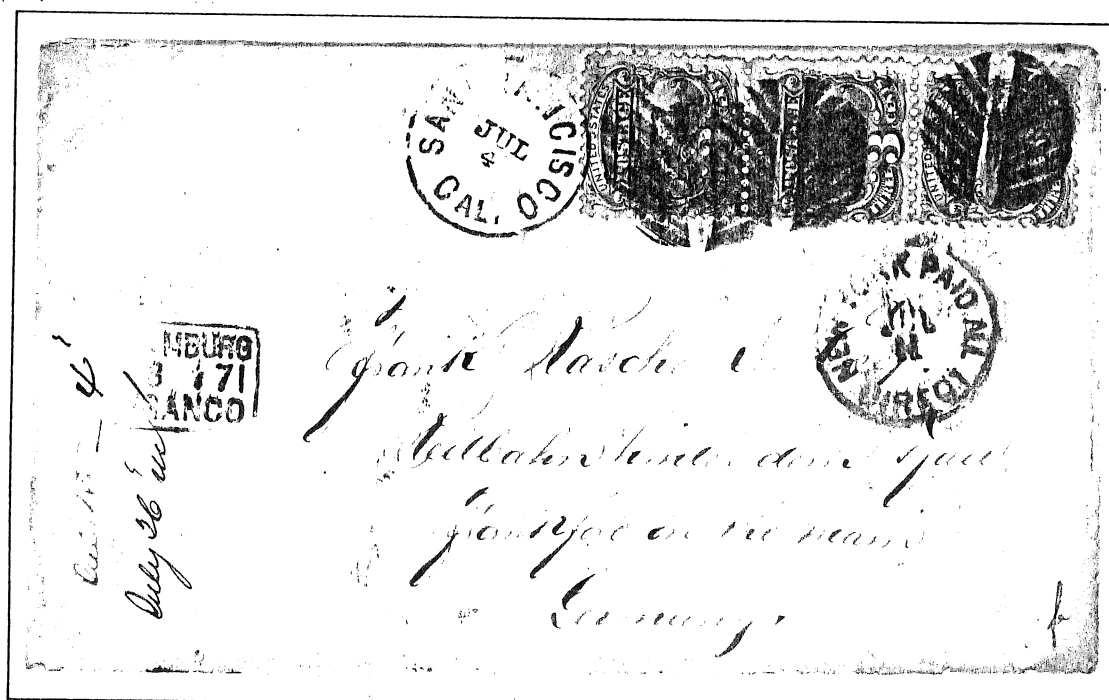
BACKSTAMPS



PAIR AND ONE-CENT 1869 ON 3-CENT ENTIRE PAYING TEN CENT RATE TO GERMANY IN JULY, 1869. POSTED AT SANDUSKY, OHIO ON JULY 26, IT RECEIVED A NEW YORK PAID ALL DIRECT MARKING ON JULY 29 AND ENTERED GERMAN MAILS AT BREMEN ON AUGUST 10. THE BACKSTAMP INDICATES THE LETTER WAS TURNED OVER TO THE RECIPIENT IN MINDEN, WESTPHALIA ON AUGUST 11.



BACKSTAMP



JULY, 1871 USAGE TO FRANKFORT, GERMANY. NINE CENTS POSTAGE REPRESENTS A TWO-CENT OVERPAYMENT OF THE 7-CENT DIRECT RATE EFFECTIVE BETWEEN JULY, 1870 AND OCTOBER, 1871. POSTED AT SAN FRANCISCO, JULY 4, 1871 AND STAMPED NEW YORK PAID ALL DIRECT JULY 11TH. HAMBURG ENTRY MARKING JULY 23RD AND FRANKFORT BACK-STAMP JULY 24TH.

W. Kühl & Sellschopp,  
104 O'Farrell Street,  
SAN FRANCISCO, CAL.

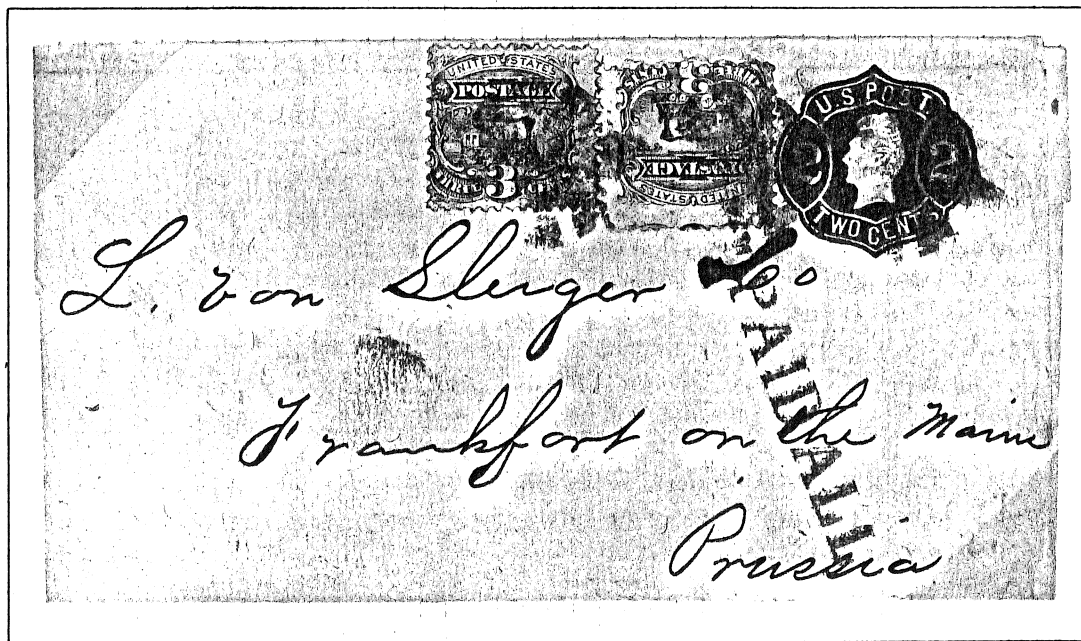


*Herrn Hans Naumann*  
*Dresden a*  
*Germany*

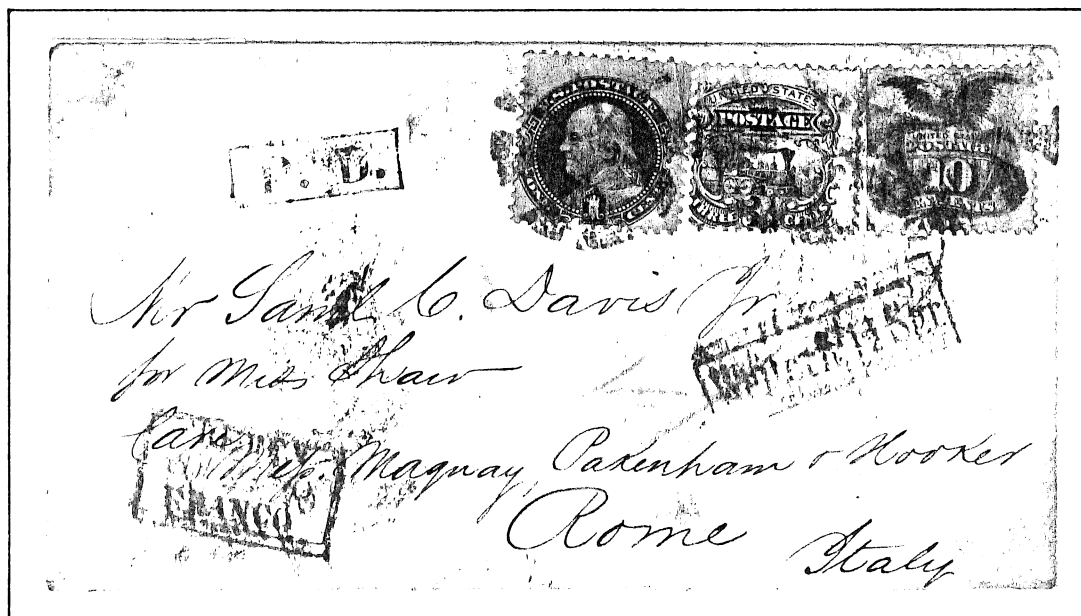
USAGE WITH 2-CENT STAMPED ENVELOPE OF 1887-94 ISSUE PAYING THE FIVE CENTS UPU RATE TO GERMANY. POSTED AT SAN FRANCISCO ON AUGUST 15, 1891 WITH ARRIVAL AT DRESDEN ON NOVEMBER 9. GRILL IMPRESSION AT UPPER RIGHT PROVES THIS IS A LATE USE OF THE REGULAR 1869 ISSUE AND NOT A RE-ISSUE.



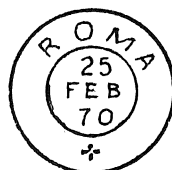
BACKSTAMP



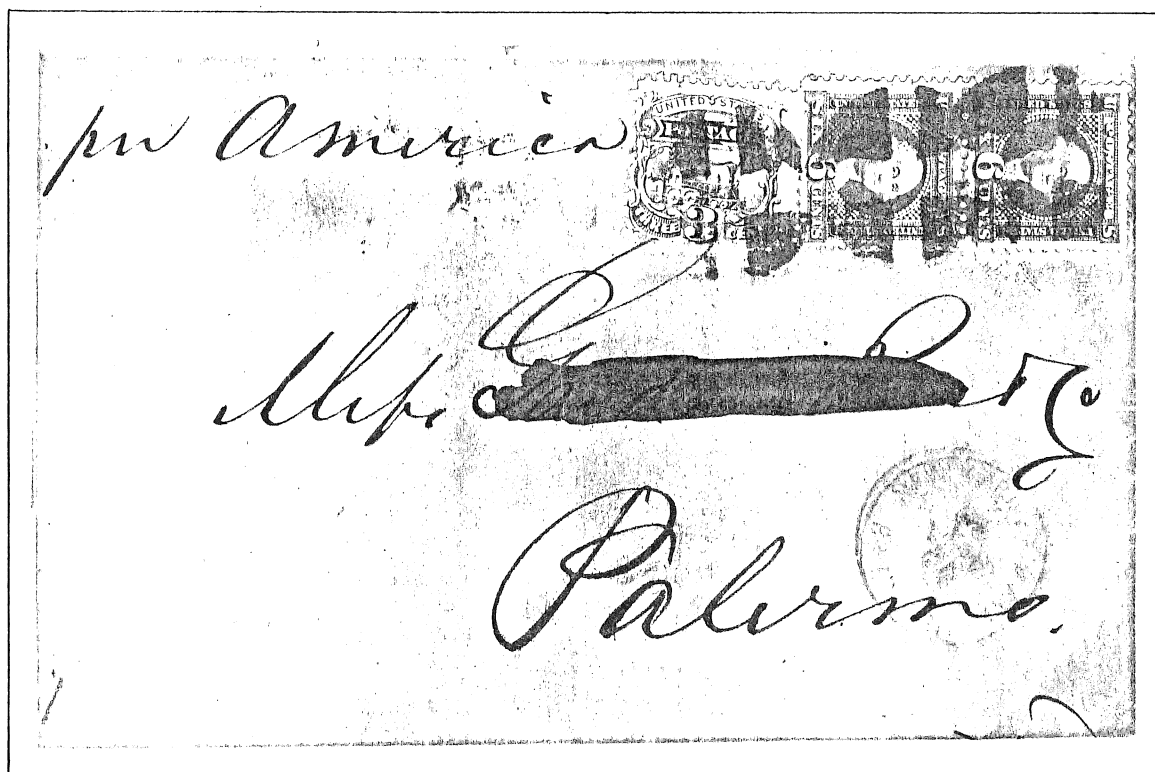
USAGE ON NEWSPAPER WRAPPER TO GERMANY PAYING DOUBLE THE 4-CENT RATE. COULD HAVE BEEN TWO NEWSPAPERS AT FOUR CENTS EACH WEIGHING UNDER FOUR OUNCES OR ONE NEWSPAPER WEIGHING OVER FOUR OUNCES.



USAGE WITH ONE-CENT AND TEN-CENT 1869 PAYING 14-CENT RATE TO ITALY FOR DIRECT NGU CARRIAGE. RED BOSTON PAID ALL DIRECT MARKING APPLIED FEB. 4 (1870). MANUSCRIPT "4" IS FOUR CENTS U.S. CREDIT TO NORTH GERMAN UNION. EUROPEAN ENTRY AT BREMEN WHERE EXCHANGE OFFICE ADDED RED BOXED "WEITERFR/1½ SGR" REPRESENTING NGU CREDIT IN SILBERGROSCHEN. ROMÉ RECEIVING MARK DATED FEBRUARY 25.



BACKSTAMP

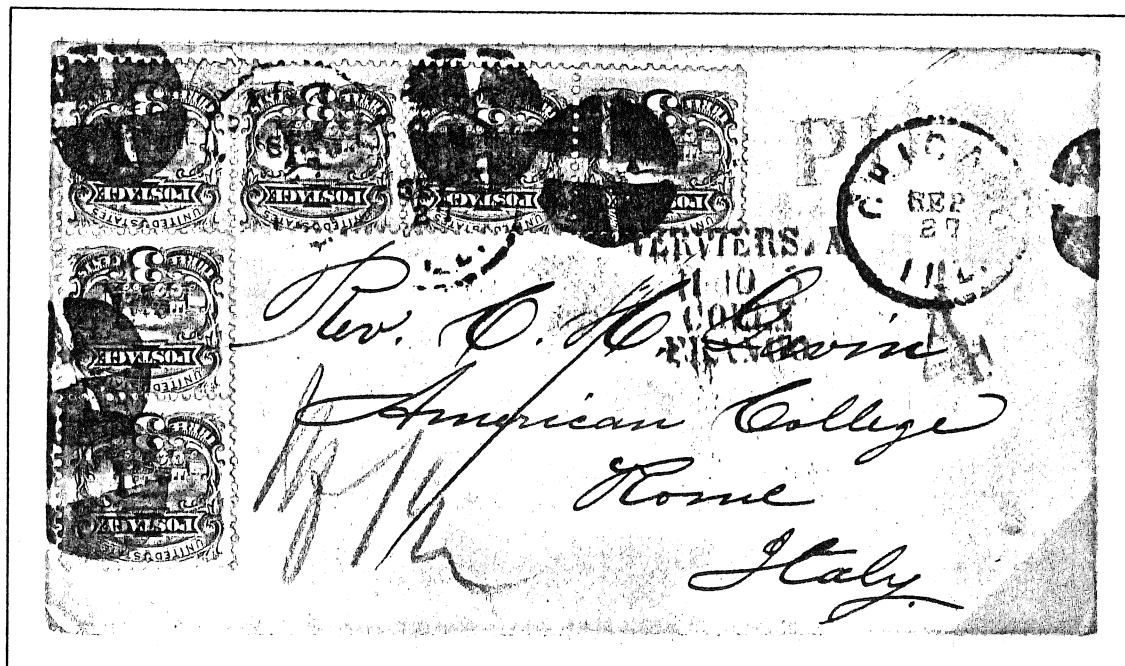


USAGE WITH PAIR OF 6-CENT 1869 STAMPS PAYING THE FIFTEEN CENTS TREATY RATE TO ITALY. NEW YORK PAID ALL BRITISH TRANSIT MARKING DATED NOV. 11, 1869. DEPARTURE ON NORTH GERMAN LLOYD STEAMER "AMERICA" IN CLOSED MAIL VIA ENGLAND. MILAN BACKSTAMP INDICATES TRANSIT TO ITALY VIA GERMANY AND SWITZERLAND. ARRIVAL BACKSTAMP AT PALERMO (SICILY) DATED NOV. 28. MEANING OF THE BOXED "6" IS UNKNOWN.



BACKSTAMPS





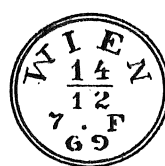
IRREGULAR PIECE OF SIX 3-CENT 1869'S IS A ONE CENT UNDER-PAYMENT OF 19-CENT NGU CLOSED MAIL RATE TO ITALY. TREATED AS FULLY PAID. POSTED CHICAGO SEPT. 20, 1869. FOUR CENTS CREDIT TO GERMANY APPLIED AT NEW YORK SEPT. 30. HANDLED BY VERVERS-COLOGNE TRAVELLING POST OFFICE OCT. 11. GERMAN BLUE MANUSCRIPT "WF 1½" SILBERGROSCHEN FOR TRANSIT TO ITALY. RECEIVED ROME OCT. 15.



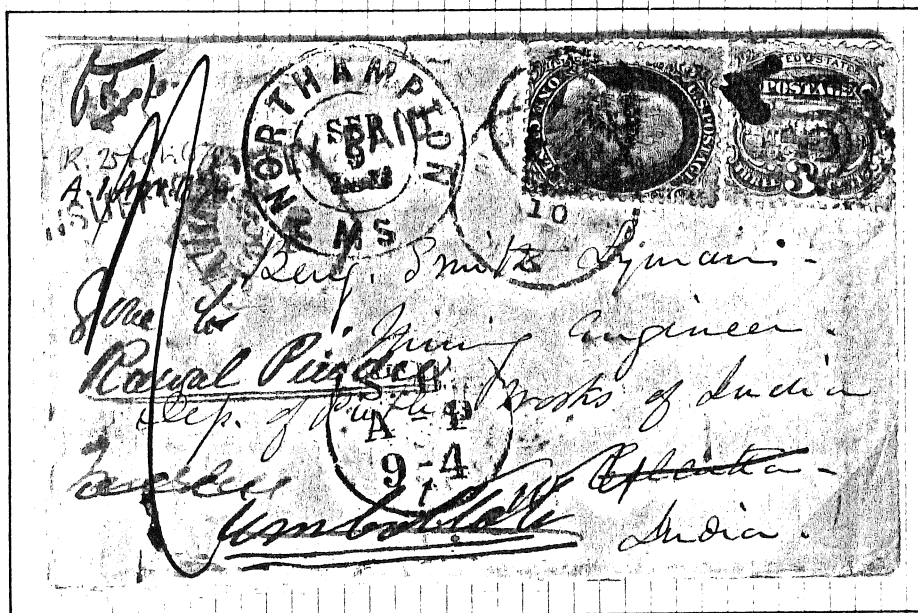
BACKSTAMPS



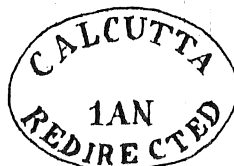
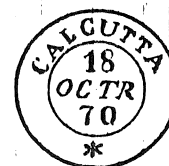
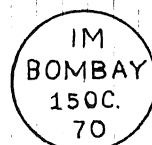
USAGE TO TURKEY PAYING 15-CENT NGU DIRECT RATE. POSTED AT MILLDLEBOROUGH, MASS. NOV. 27, 1869 AND HANDLED BY BOSTON EXCHANGE OFFICE NOV. 29. RED CRAYON "5" INDICATES UNITED STATES CREDIT TO GERMANY. EUROPEAN ENTRY AT HAMBURG DECEMBER 12. THE "2WF" MARKING INDICATES TWO SILBERGROSCHEN FEE FOR TRANSIT BEYOND GERMANY. BACKSTAMPED AT VIENNA DECEMBER 14 AND CONSTANTINOPLE DECEMBER 24.



BACKSTAMPS



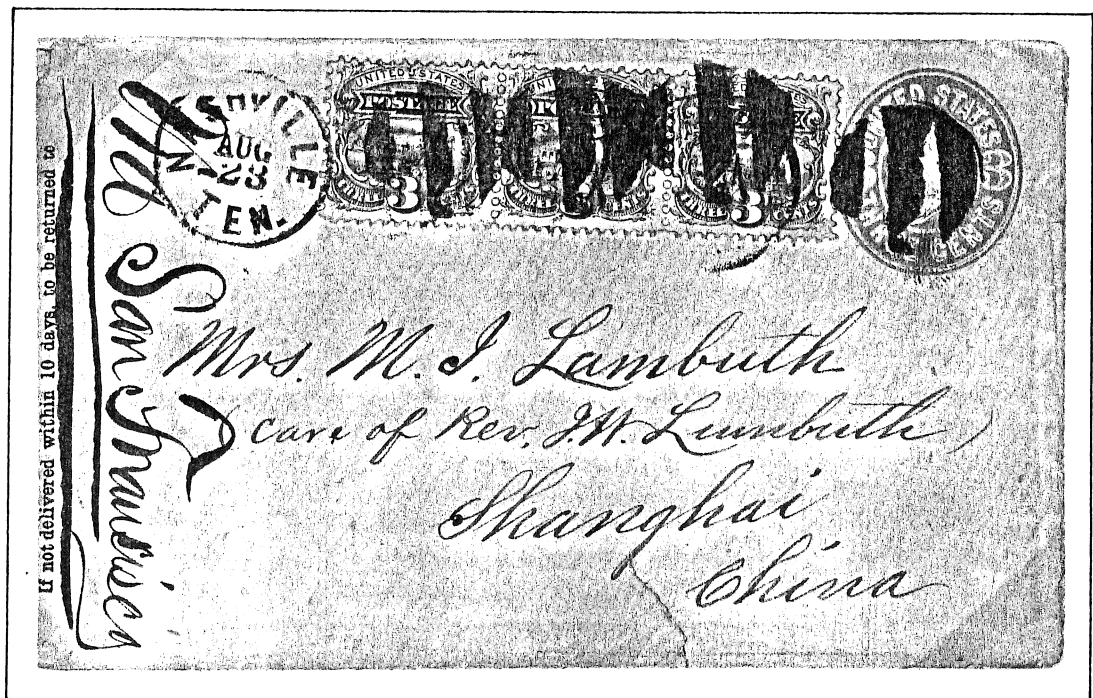
USAGE WITH 1-CENT 1857 (DEMONITIZED BUT ACCEPTED) FROM NORTHAMPTON, MASS. ON SEPTEMBER 9, 1870 PAYING FOUR CENTS OPEN MAIL RATE TO ENGLAND. TRANSIT FROM NEW YORK BY BRITISH MAIL VIA LONDON, SOUTHAMPTON, BOMBAY AND CALCUTTA TO UMBALLA, INDIA ARRIVING OCTOBER 21. CORRECT RATE TO INDIA VIA SOUTHAMPTON WAS 22¢. ADDRESSEE PAID 10 ANNAS, 4 PIES (31 CENTS) WHICH INCLUDED A 6¢ FINE FOR AN INSUFFICIENTLY PAID LETTER PLUS 3¢ TO FORWARD FROM CALCUTTA TO UMBALLA.



10-4

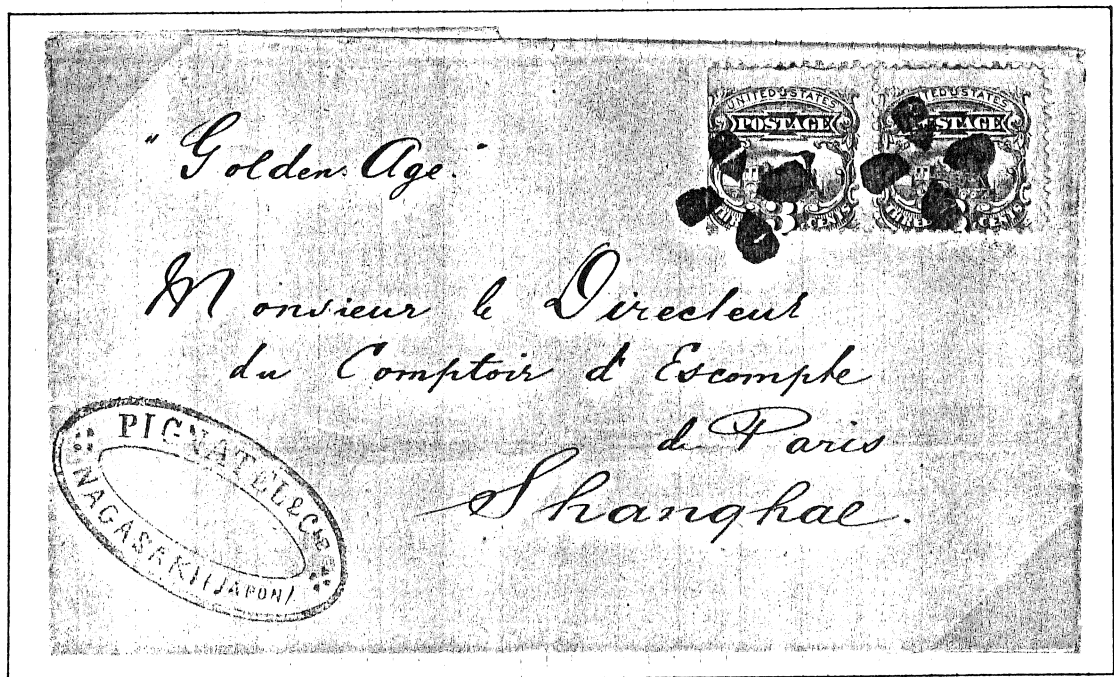


BACKSTAMPS



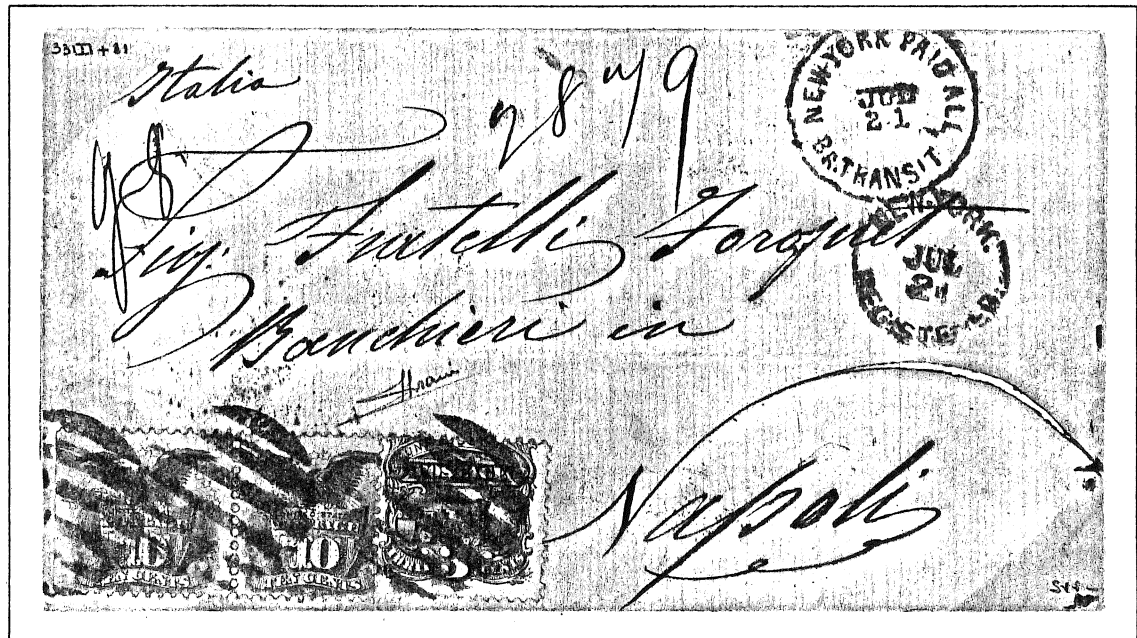
A TWO-CENT OVERPAYMENT OF THE TEN-CENT RATE TO CHINA. POSTED AT NASHVILLE, TENNESSEE ON AUGUST 23, PROBABLY 1869, THIS LETTER TRAVELLED BY AMERICAN PACKET FROM SAN FRANCISCO.

INTERCONSULAR MAIL



PAIR PAYING 6-CENT INTERCONSULAR RATE BETWEEN CHINA AND JAPAN. THIS FOLDED LETTER, WRITTEN IN FRENCH, IS HEADED "NAGASAKI, JULY 3, 1870". IT TRAVELLED TO SHANGHAI ON THE STEAMER "GOLDEN AGE". DOCKETING ON REVERSE INDICATES SHANGHAI ARRIVAL JULY 5TH.

REGISTERED FOREIGN MAIL



USAGE WITH PAIR OF 10-CENT 1869 STAMPS ON REGISTERED LETTER TO ITALY. THIS LETTER TRAVELLED IN CLOSED MAIL VIA ENGLAND PAYING THE 15-CENT RATE TO ITALY PLUS 8 CENTS REGISTRY FEE. IT LEFT NEW YORK JULY 21, 1869 AND ARRIVED IN NAPLES AUGUST 5. PROBABLE ROUTING WAS THROUGH GERMANY AND SWITZERLAND.

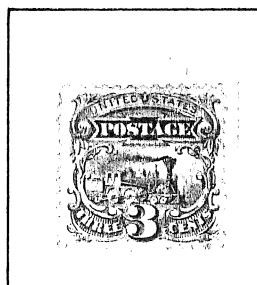


BACKSTAMP





## EPILOGUE



RE-ISSUE OF THE 1869 DESIGNS.  
ISSUED IN 1875 FOR THE FORTH-  
COMING CENTENNIAL EXPOSITION  
OF 1876, THE PRINTING WAS ON  
HARD WHITE PAPER WITH A WHITE  
CRACKLY GUM AND WAS NOT GRILL-  
ED. A TOTAL OF 1406 3-CENT  
STAMPS WERE PRINTED.