

THE UNITED STATES
THREE CENT STAMP
OF 1869

REX H. STEVER

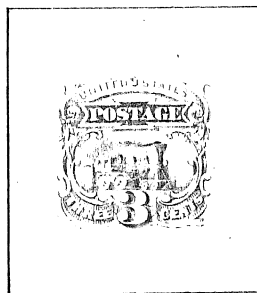
AS RECEIVED BY
THE EXHIBITION PHOTOCOPY COMMITTEE
OF THE
U.S. PHILATELIC CLASSICS SOCIETY, INC.
28 AUGUST 1990

THE UNITED STATES THREE CENT STAMP OF 1869

A RECORD OF ITS DESIGN, PRINTING,
CANCELLATIONS AND VARIOUS COMMON
AND SPECIAL USAGES INCLUDING BOTH
DOMESTIC AND FOREIGN LETTER RATES.

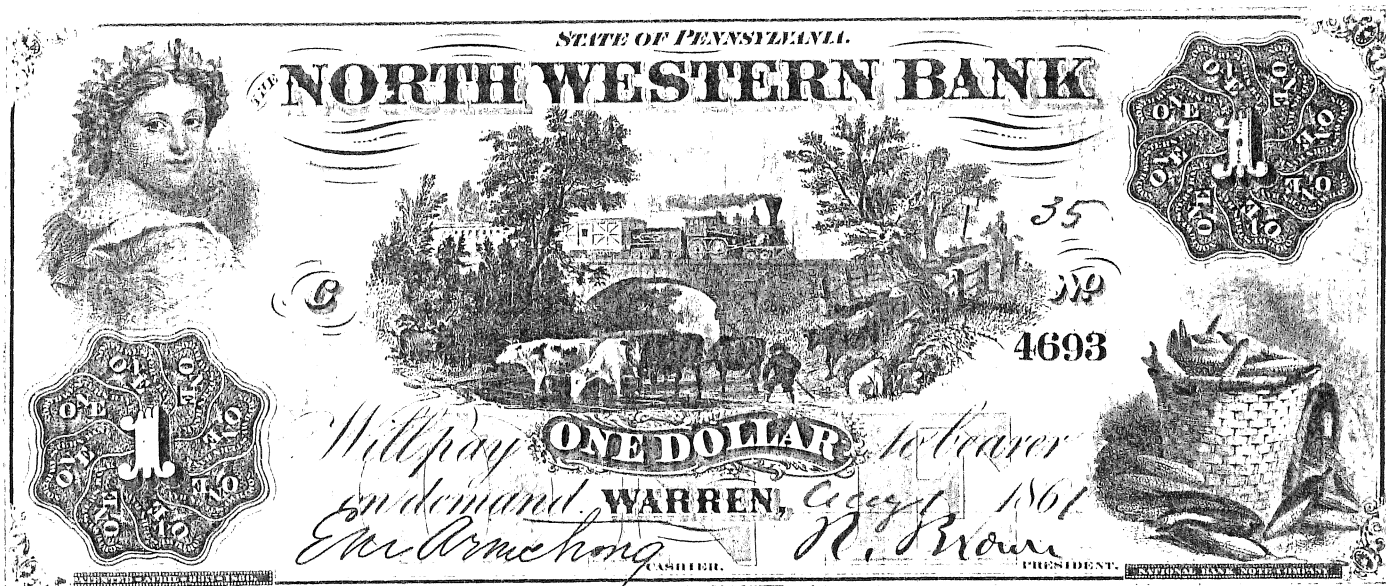
RARITY FACTOR:

TEN OR FEWER CURRENTLY KNOWN ●
ONLY ONE REPORTED TO DATE ●●



IN JUNE, 1868, POSTMASTER GENERAL ALEX W. RANDALL REQUESTED DESIGNS BE SUBMITTED FOR A NEW ISSUE OF POSTAGE STAMPS. A LOCOMOTIVE DESIGN WAS PROPOSED FOR THE 3-CENT STAMP TO EMPHASIZE THE RAIL SYSTEM AS A CARRIER OF THE MAILS.

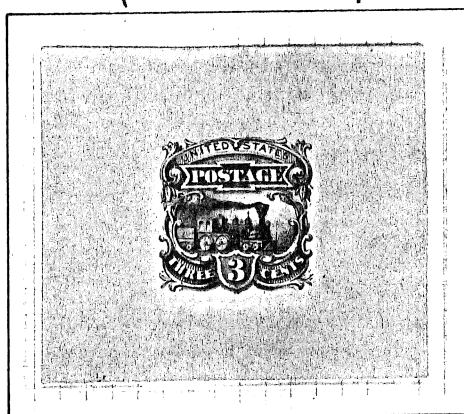
THE CONTRACT WAS SUBSEQUENTLY AWARDED TO THE NATIONAL BANK NOTE COMPANY OF NEW YORK. FOR THE 3-CENT STAMP, THIS FIRM ADAPTED THE LOCOMOTIVE FROM THEIR EARLIER ENGRAVING KNOWN AS "THE CROSSING" USED ON THE ONE-DOLLAR BANKNOTE OF THE NORTH WESTERN BANK OF WARREN, PENNSYLVANIA.



ESSAYS BY NATIONAL BANK NOTE COMPANY
VIGNETTE ENGRAVED BY CHRISTIAN ROST, FRAME BY GEORGE W. THURBER

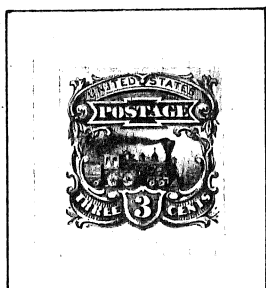
INCOMPLETE DIE ON INDIA PAPER ON CARD

CORNER LEAVES DO NOT TOUCH

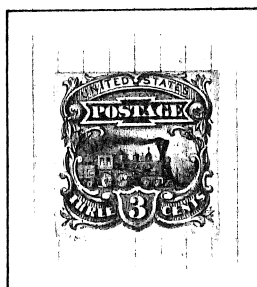


ORANGE RED

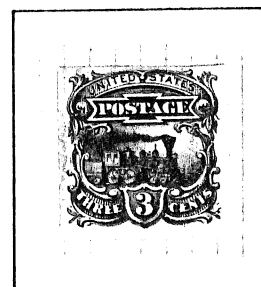
INCOMPLETE DIE ON INDIA PAPER CUT TO STAMP SIZE



BLACKISH SLATE

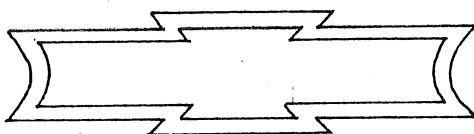


SCARLET



CHOCOLATE

FRAME ABOUT POSTAGE NOT SHADED

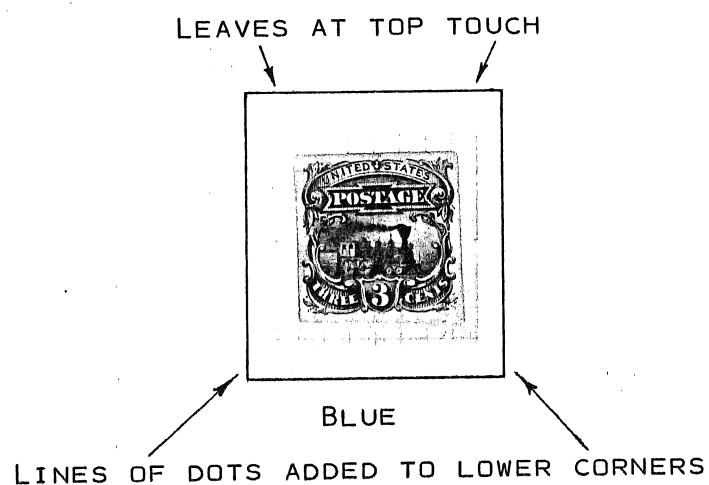


NO SCROLLS AT BOTTOM
OF SHEILD

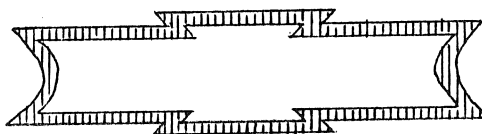


SHIELD SHADED EQUALLY
AT TOP AND BOTTOM

COMPLETED DIE. PRINTED ON INDIA PAPER, ORIGINALLY DIE SUNK ON CARD



POSTAGE LABEL FRAME IS SHADED



SHADING OF SHIELD LIGHTER AT TOP THAN AT BOTTOM

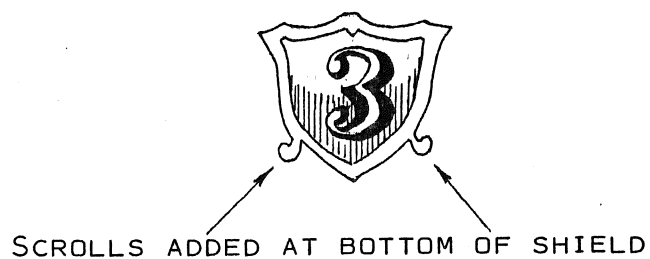
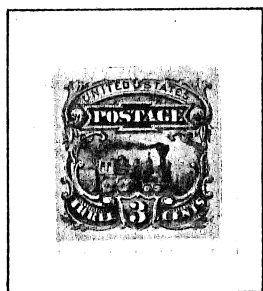
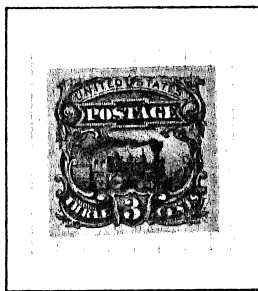


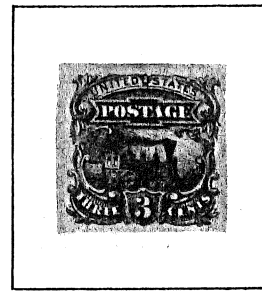
PLATE ESSAYS COMPLETED ON STAMP PAPER, IMPERFORATE, GUMMED.



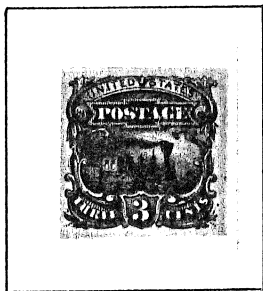
ULTRAMARINE



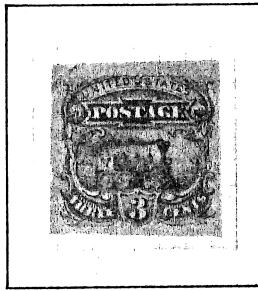
DARK ULTRAMARINE



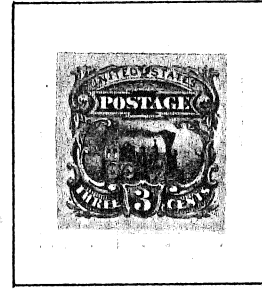
LIGHT BROWN



RED-BROWN

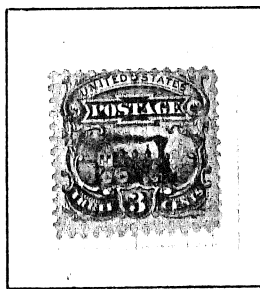


ROSE



BROWN-ROSE

COMPLETED ON STAMP PAPER, PERFORATED AND GUMMED. NO GRILL

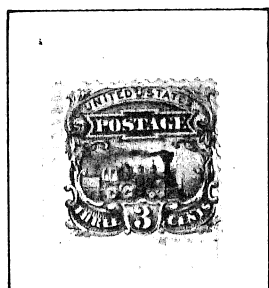


ULTRAMARINE

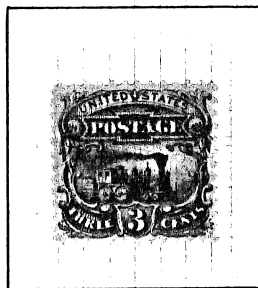


DARK ULTRAMARINE

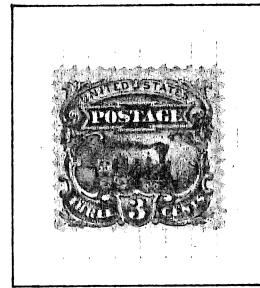
COMPLETED ESSAYS ON STAMP PAPER, GUMMED, GRILLED AND PERFORATED



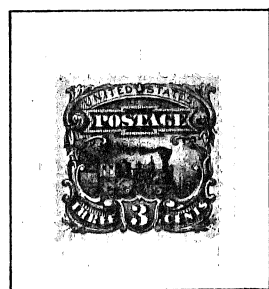
BLUE



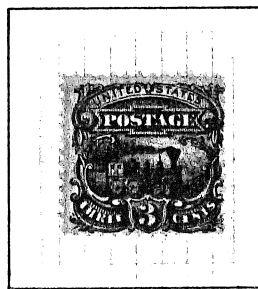
DEEP BLUE



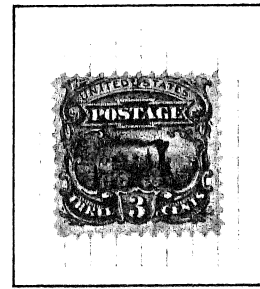
YELLOW



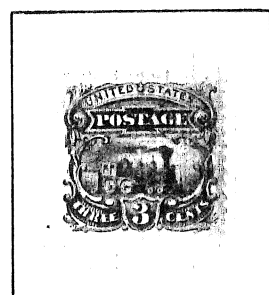
BLACK BROWN



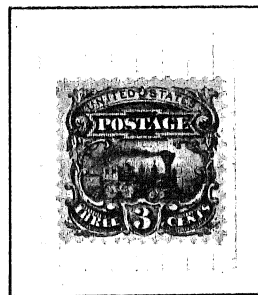
DEEP BLACK BROWN



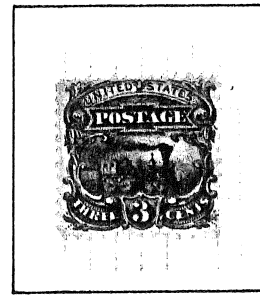
ORANGE BROWN



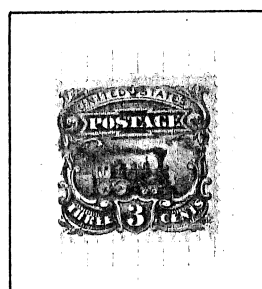
ROSE RED



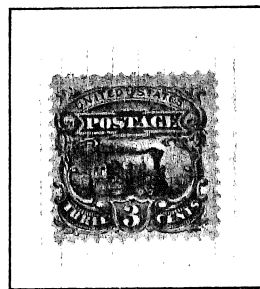
DULL VIOLET



DEEP VIOLET



ORANGE



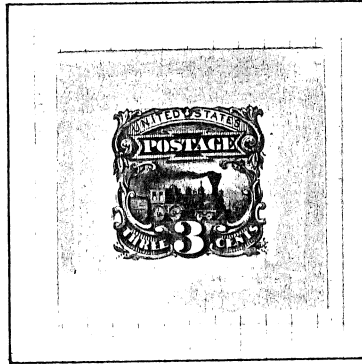
GREEN

LARGE DIE PROOF



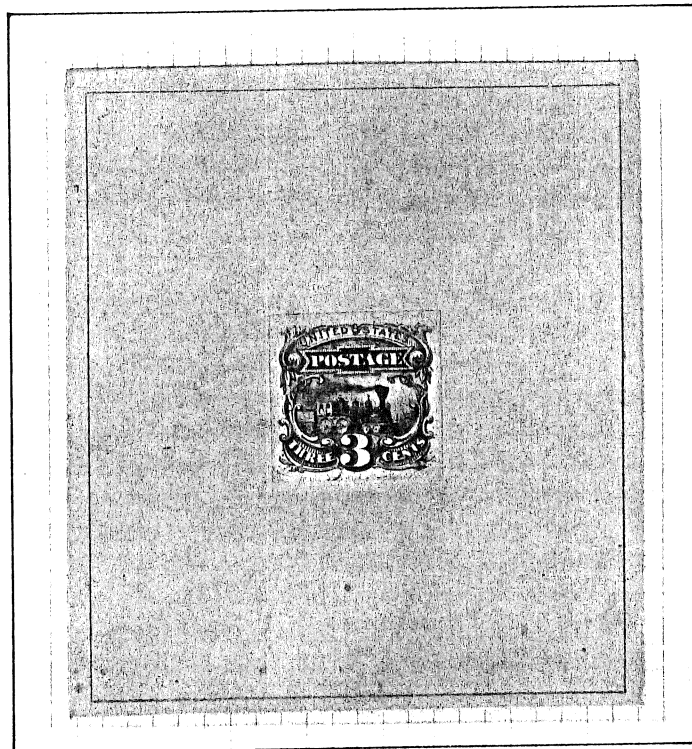
W. A. G. & S. M. L. & S. N. Y.

TRIAL COLOR LARGE DIE PROOF



BY NATIONAL BANKNOTE COMPANY PRIOR
TO ISSUANCE OF STAMP. ON INDIA
PAPER ORIGINALLY DIE SUNK ON CARD. ●

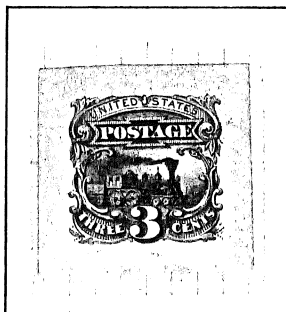
SIMULATED LARGE DIE PROOF



INDIA PAPER PLATE PROOF CUT CLOSE AND
MOUNTED ON CARD WITH RULED GOLD FRAM-
ING TO SIMULATE DIE SINKING. ORIGIN-
ALLY BOUND IN PRESENTATION BOOK.

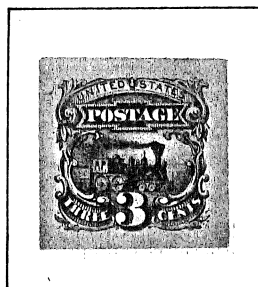
SMALL DIE PROOFS

ROOSEVELT



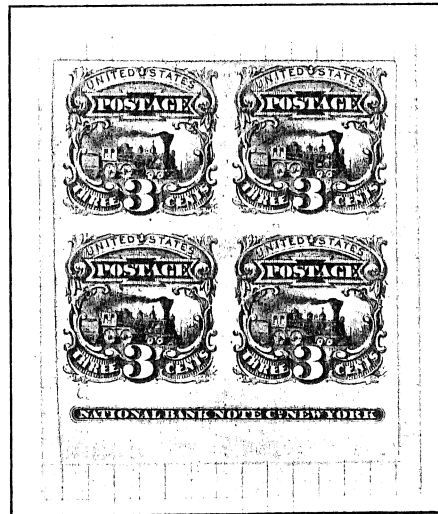
PREPARED IN 1903 DURING THEODORE ROOSEVELT'S ADMINISTRATION BY THE BUREAU OF ENGRAVING AND PRINTING FOR PRESENTATION TO VARIOUS GOVERNMENT OFFICIALS. PRINTED ON WHITE WOVE PAPER.

SOUTHGATE



A SPECIAL PRINTING MADE ABOUT 1915 BY THE BUREAU OF ENGRAVING AND PRINTING ON SOFT YELLOWISH WOVE PAPER. A COMPLETE SET OF ALL U.S. STAMPS ISSUED TO THAT DATE WAS EXHIBITED AT THE PANAMA-PACIFIC EXHIBITION AT SAN FRANCISCO. LATER PRESENTED TO H.M. SOUTHGATE. ●

PLATE PROOFS



INDIA PAPER

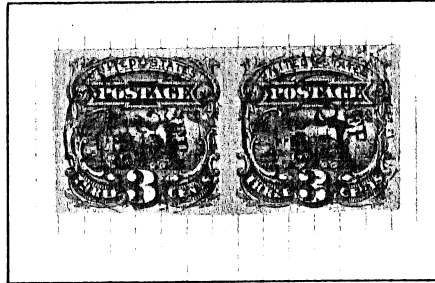
PRINTED BY THE NATIONAL BANK NOTE COMPANY
PRIOR TO PRINTING THE STAMPS.



CARDBOARD

LATER PRINTINGS BY THE AMERICAN BANK NOTE
COMPANY FOR DISTRIBUTION TO CONGRESSMEN,
PHILATELISTS AND THE PUBLIC.

EXPERIMENTAL PROOF



ADOPTED STAMP DESIGN AND COLOR, GUMMED
AND WITH ESSAY GRILL ALL OVER, SQUARES
UP. A 23 MM CIRCULAR CANCELLATION
READS "NATIONAL BANK NOTE CO. N.Y.
SEP 27, 1869".

CENTENNIAL CARDBOARD PROOF

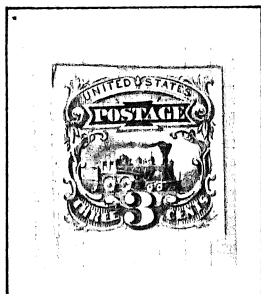
OVERPRINTED "SPECIMEN" IN BLUE



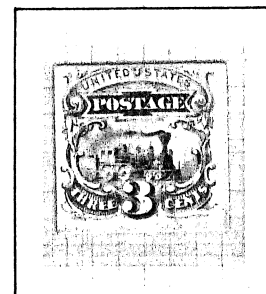
SPECIAL PRINTING IN 1875 BY THE POST OFFICE
DEPT. FOR SALE AT THE CENTENNIAL EXPOSITION
IN PHILADELPHIA IN 1876.

CARDBOARD PLATE PROOFS

PRINTED BY THE AMERICAN BANK NOTE COMPANY



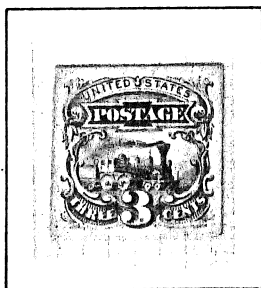
1879 PRINTING
CARD THICKNESS .0135-.0150 INCHES



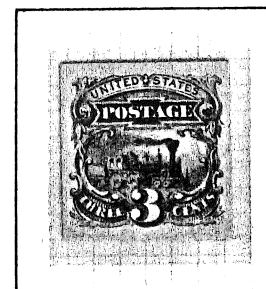
1885 PRINTING
CARD THICKNESS .009-.010 INCHES



1890 PRINTING
CARD THICKNESS .011-.0125 INCHES



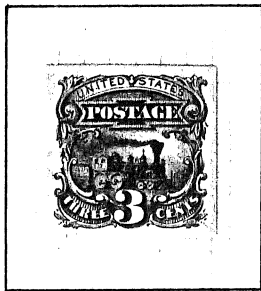
1893 PRINTING
CARD THICKNESS .011-.013 INCHES



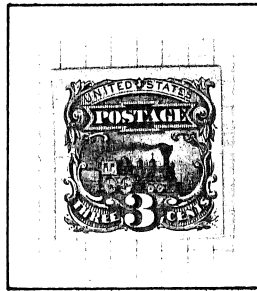
1894 PRINTING
CARD THICKNESS .011-.013 INCHES

ATLANTA TRIAL COLOR PROOFS

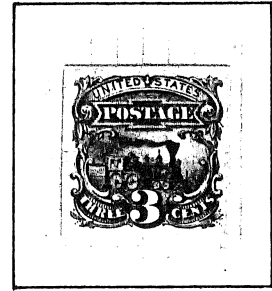
PREPARED BY THE AMERICAN BANK NOTE COMPANY FOR DISPLAY AT THE
INTERNATIONAL COTTON EXPOSITION AT ATLANTA, GEORGIA IN 1881.



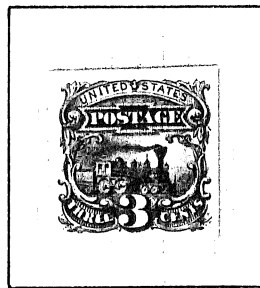
BLACK



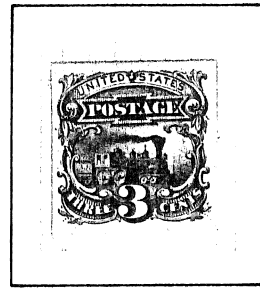
SCARLET



BROWN

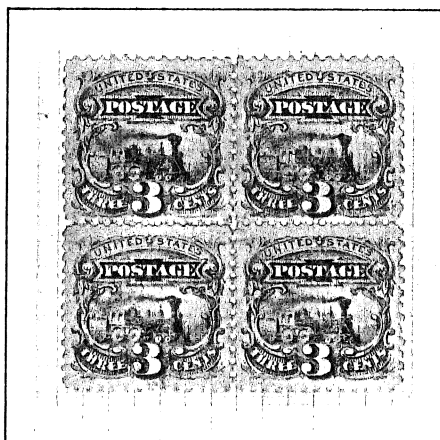


GREEN



BLUE

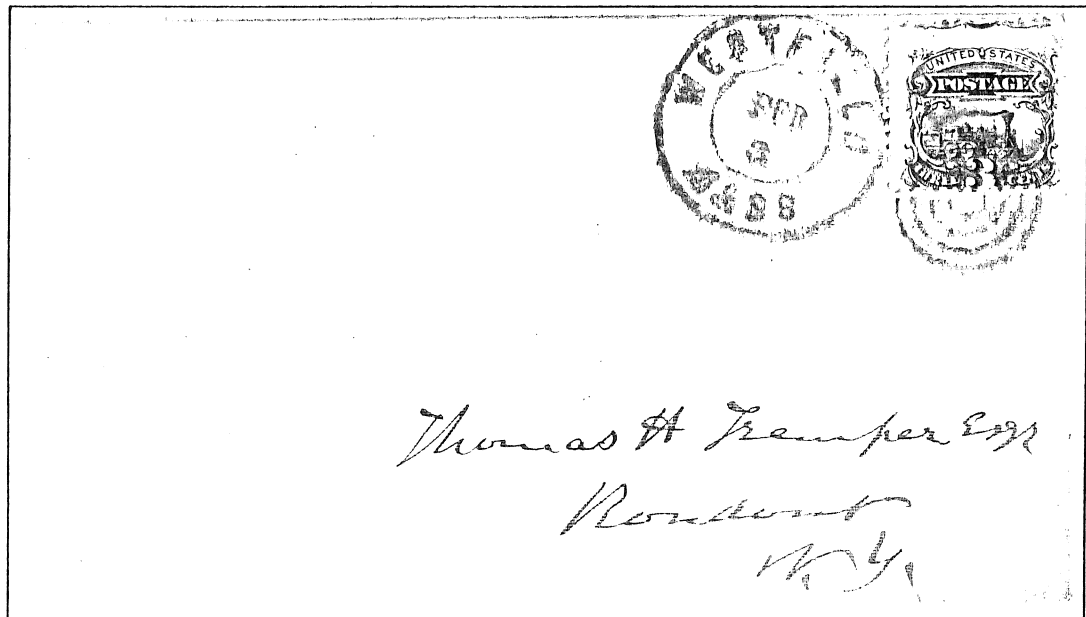
THE ISSUED STAMP



A TOTAL OF 386,475,900 WERE PRINTED.
FIRST DELIVERY TO THE STAMP AGENT
WAS ON MARCH 19, 1869 BUT EARLIEST
KNOWN USE IS MARCH 27, 1869.

SHADES

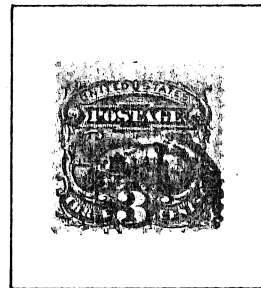
THE STAMP WAS COMMONLY PRINTED IN FOUR PRINCIPAL SHADES -- ULTRAMARINE, ULTRAMARINE BLUE, BRILLIANT ULTRAMARINE, AND BLUE. IT IS ALSO KNOWN IN VIOLET BLUE. THERE ARE, HOWEVER, AT LEAST 45 LIGHT, NORMAL AND DARK GRADATIONS OF THE BASIC SHADES DEPENDING ON THE AMOUNT OF WHITE INK OR BLACK PIGMENT ADDED TO THE INK AND THE AMOUNT OF INK ON THE PRESS.



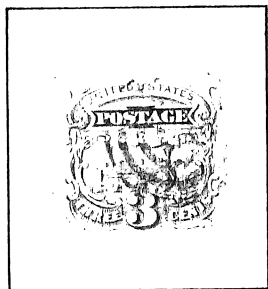
"TRUE BLUE" SHADE



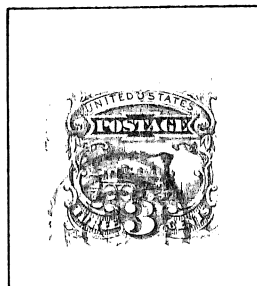
PRUSSIAN BLUE
POSSIBLE USE OF 15-CENT INK



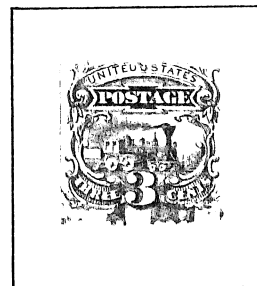
VIOLET
BLUE



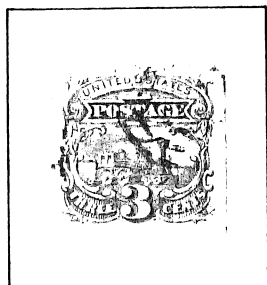
LIGHT
ULTRAMARINE



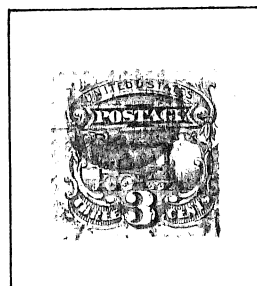
ULTRAMARINE



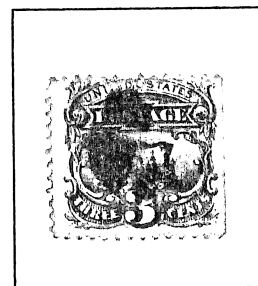
DARK
ULTRAMARINE



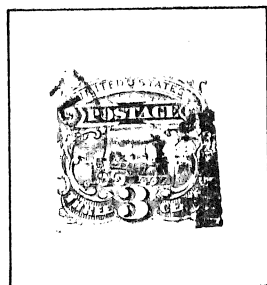
LIGHT
ULTRAMARINE BLUE



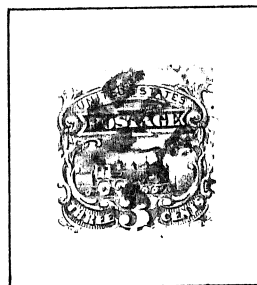
ULTRAMARINE BLUE



DARK
ULTRAMARINE BLUE



LIGHT
BRILLIANT ULTRAMARINE



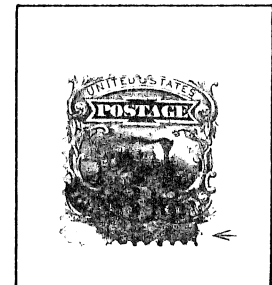
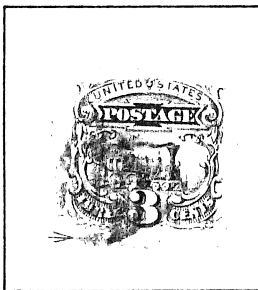
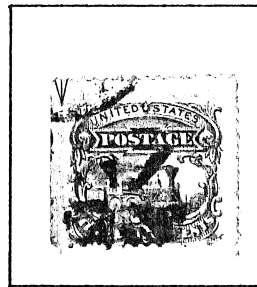
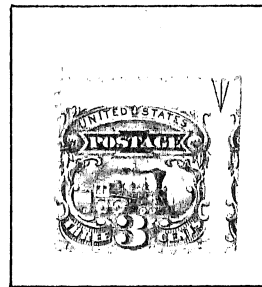
BRILLIANT ULTRAMARINE



DARK
BRILLIANT ULTRAMARINE

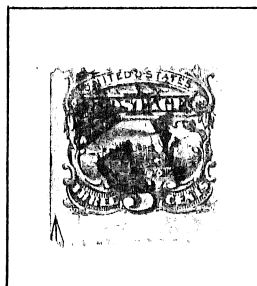
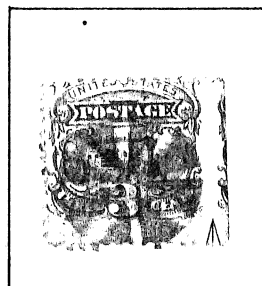
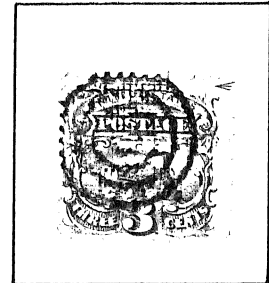
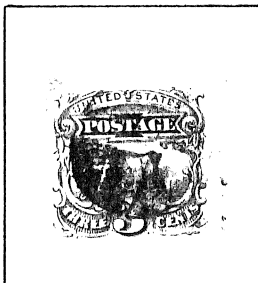
GUIDE ARROWS

THE STAMP WAS PRINTED IN SHEETS OF 300 CONSISTING OF TWO PANES OF 150 STAMPS. EACH PANE HAD 10 VERTICAL ROWS AND 15 HORIZONTAL ROWS. GUIDE ARROWS AT TOP AND BOTTOM HELPED POSTAL CLERKS WHEN SEPARATING THE PANES. ARROWS ALSO WERE POSITIONED AT THE LEFT SIDE OF THE LEFT PANE AND RIGHT SIDE OF THE RIGHT PANE BETWEEN THE 5TH AND 6TH AND BETWEEN THE 10TH AND 11TH HORIZONTAL ROWS.



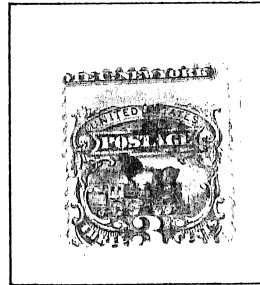
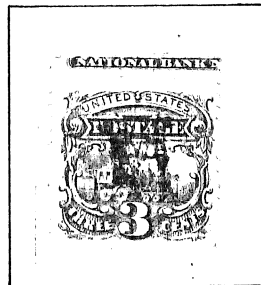
LEFT PANE

RIGHT PANE

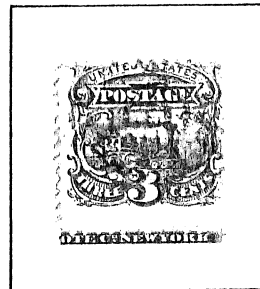
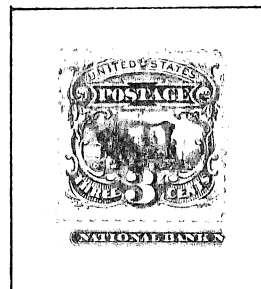


NATIONAL BANK NOTE C^o NEW YORK

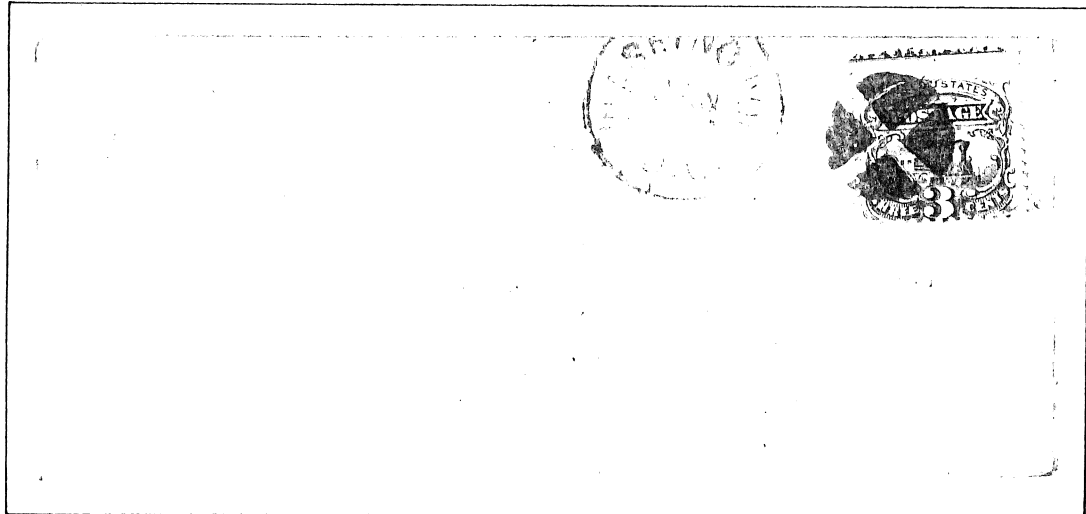
THE PRINTER'S IMPRINT WAS POSITIONED IN THE TOP AND BOTTOM MARGINS OF EACH PANE ADJACENT TO THE TWO MIDDLE STAMPS.



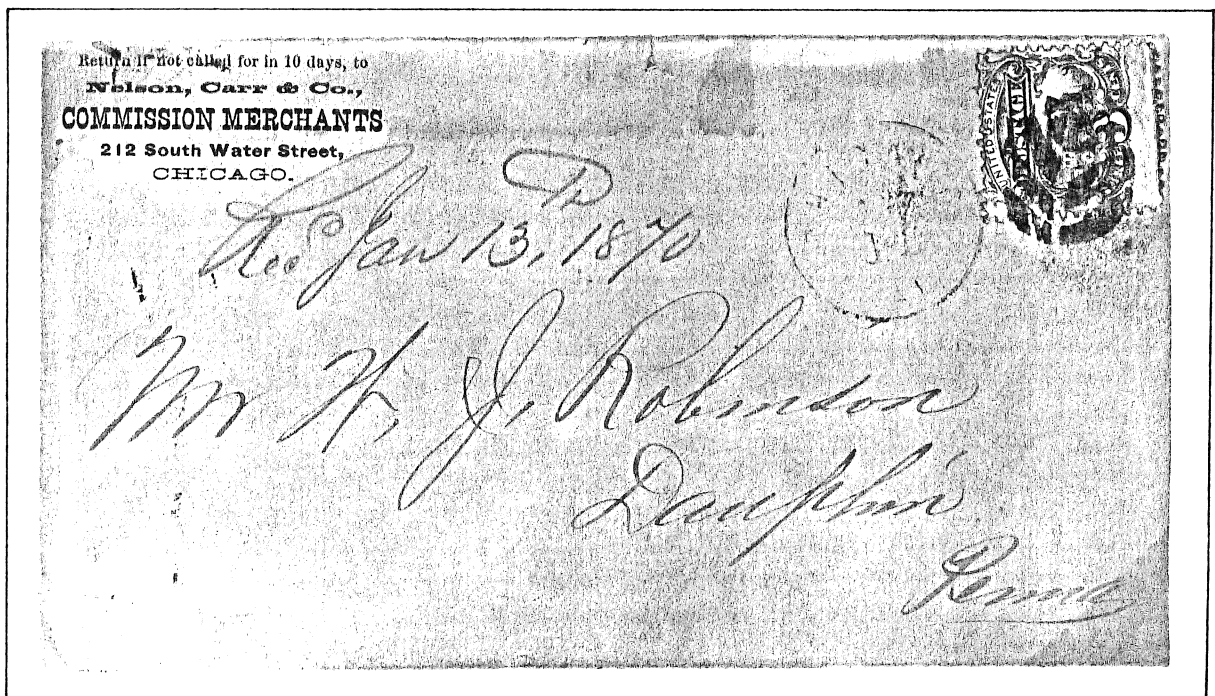
TOP IMPRINT



BOTTOM IMPRINT



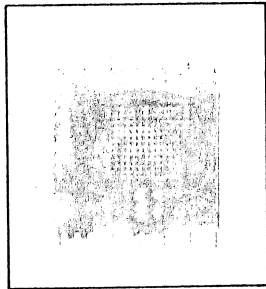
TOP IMPRINT



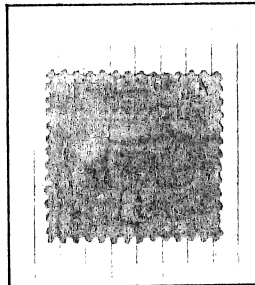
BOTTOM IMPRINT

GRILLS

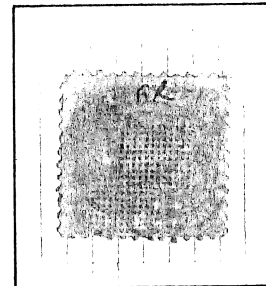
ONE OF THE REQUIREMENTS FOR THE ISSUE WAS THAT IT BE EMBOSSED OR GRILLED SO THAT CANCELLATION INK WOULD SPREAD AND WASHING FOR RE-USE WOULD BE IMPOSSIBLE. GRILLS ON THE 1869 ISSUES ARE 9-1/2 X 9-1/2 MILLIMETERS.



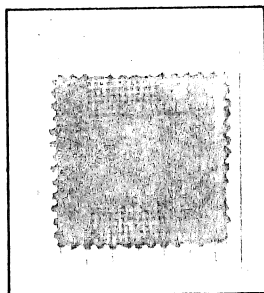
NORMAL GRILL



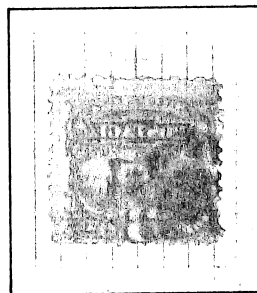
WITHOUT GRILL
ORIGINAL GUM



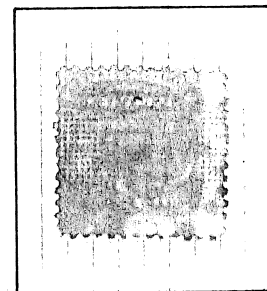
DOUBLE GRILL



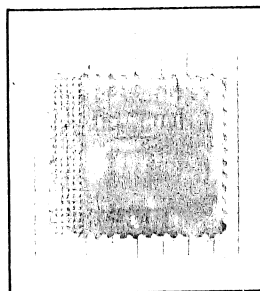
SPLIT GRILL -
TOP AND BOTTOM



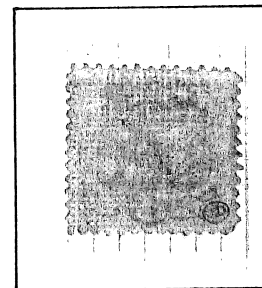
QUADRUPLE SPLIT GRILL



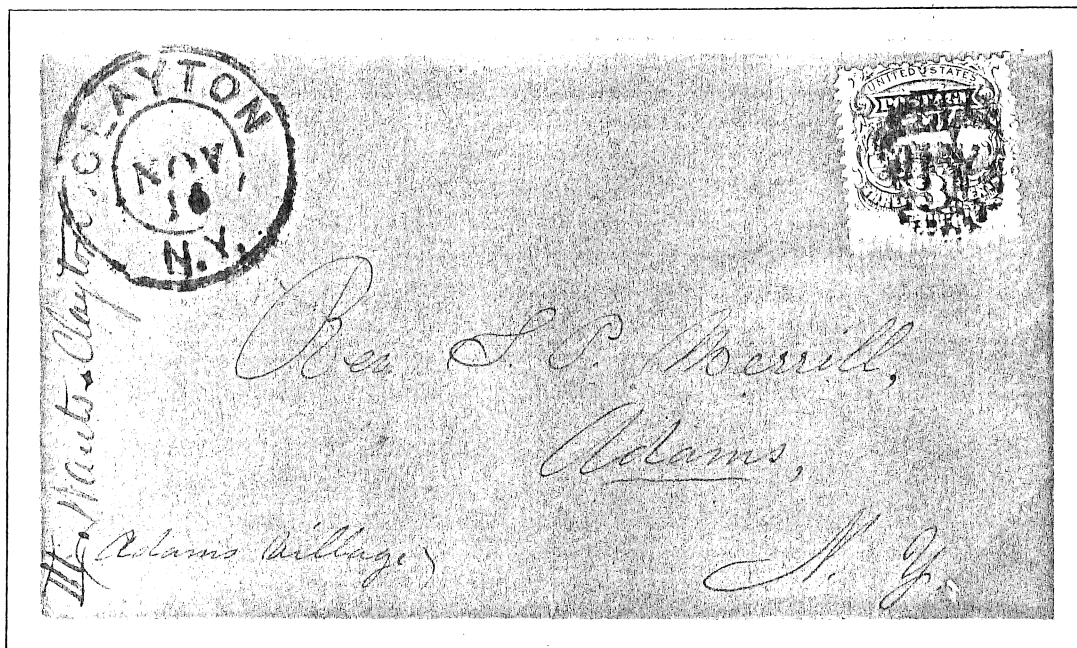
SPLIT GRILL
- AT SIDES



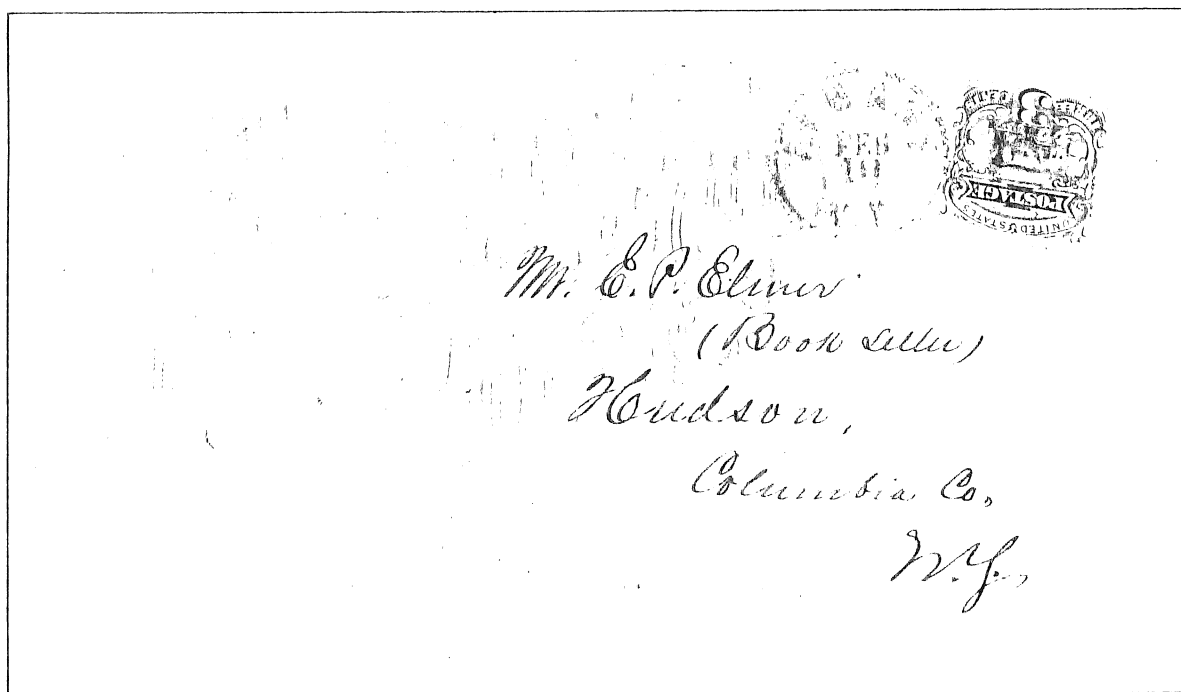
SPLIT GRILL WITH MARGINAL
OR "END ROLLER" GRILL



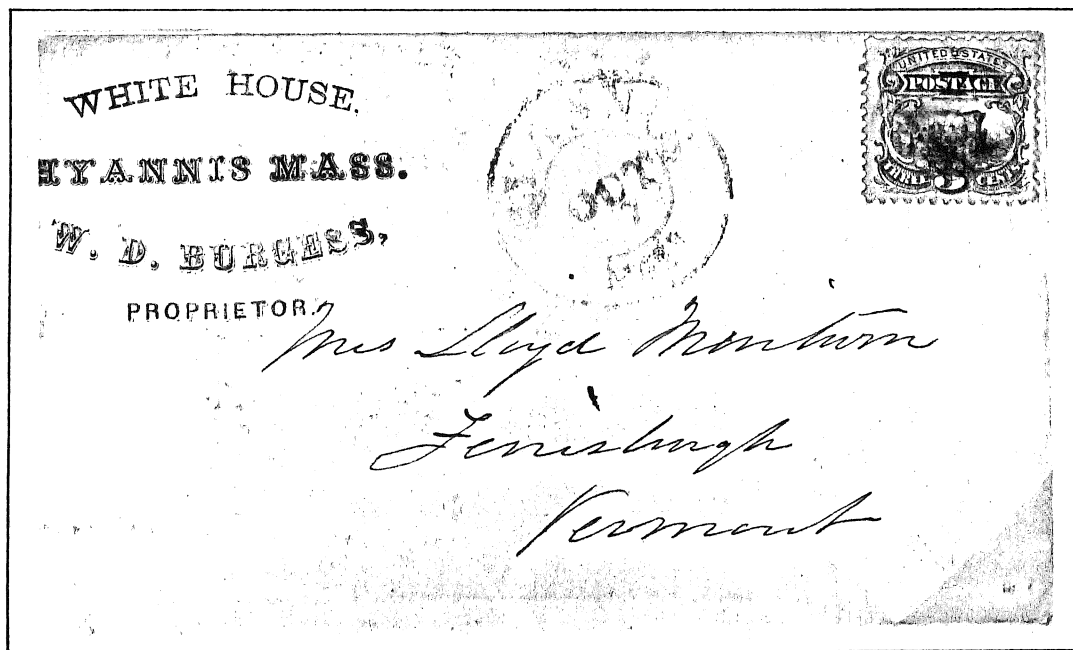
SEXTUPLE GRILL - ONE SPLIT ●●



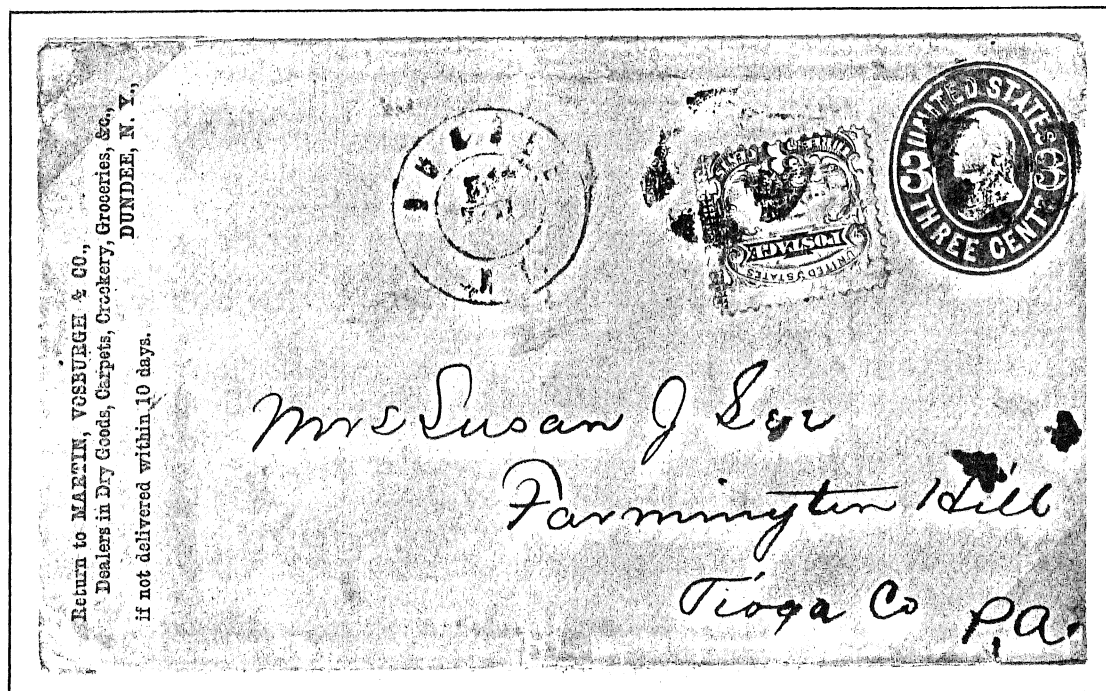
HORIZONTALLY SPLIT GRILL



VERTICALLY SPLIT GRILL

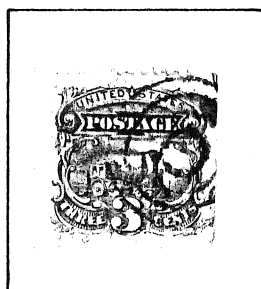


QUADRUPLE SPLIT GRILL

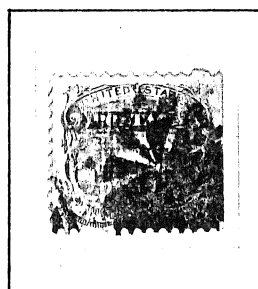


MARGINAL OR "END ROLLER" GRILL •

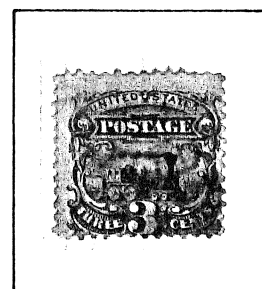
PRINTING MISTAKES



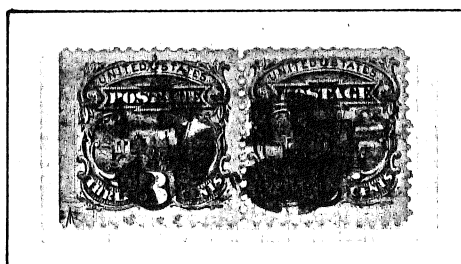
RUST SPOT ON
THE PLATE



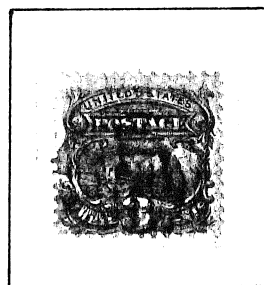
DRY PRINT. INSUFFICIENT
WATER USED IN THE INKING
PROCESS.



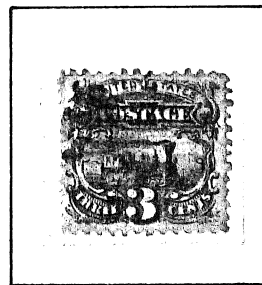
INK SPOT



CARELESS WIPING OF THE PLATE

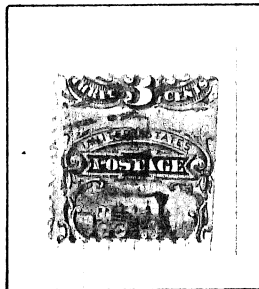


DOUBLE IMPRESSION
(PRINTING ERROR)

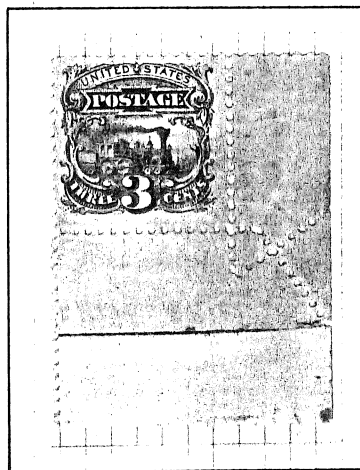


DOUBLE TRANSFER
(PLATE ERROR)

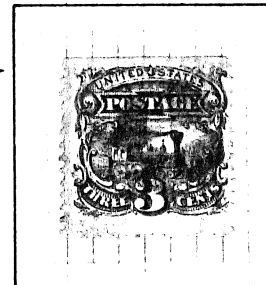
MISPERFORATIONS



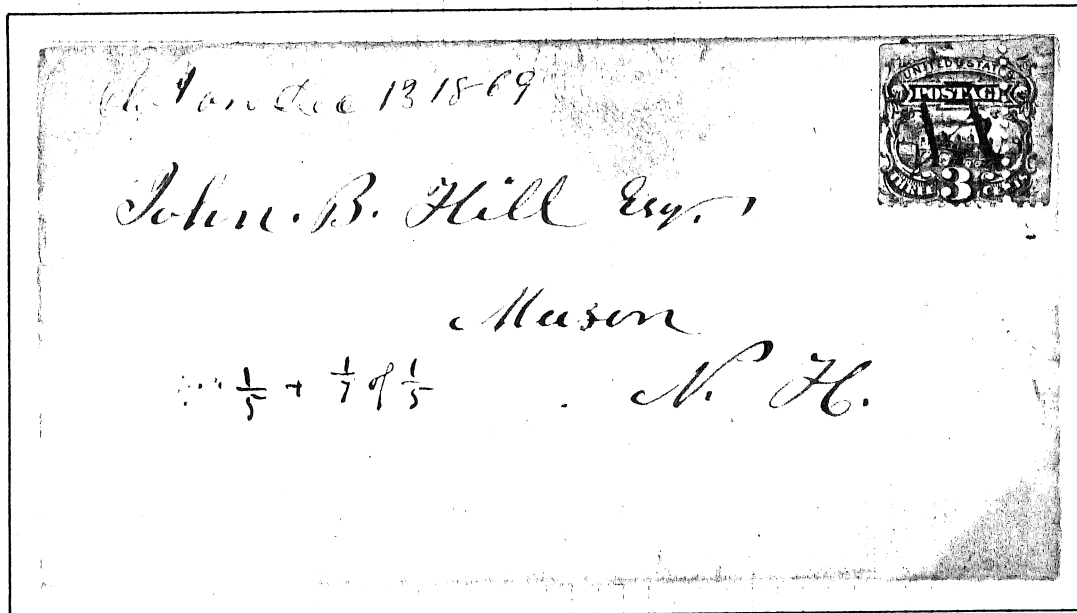
PERFORATION SHIFT



SHEET MARGIN COPY WITH
PRE-PERFORATION FOLD IN
SELVAGE.



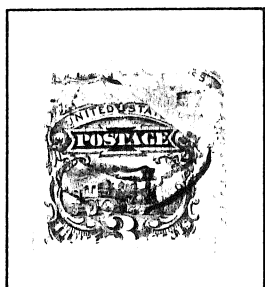
BLIND PERFS



VERTICALLY MISPERFORATED

PAPER CREASES

PRINTED ON FOLDED STAMP PAPER. SUBSEQUENT OPENING OUT OR FLATTENING OF PAPER RESULTS IN OFFSET AND/OR EXTENSION OF STAMP DESIGN AND UNPRINTED PAPER CREASE.



WIDE PLEAT

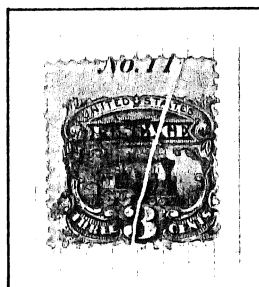
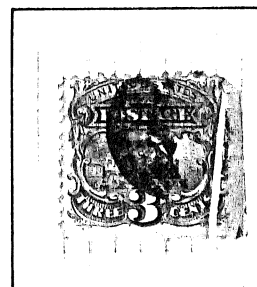
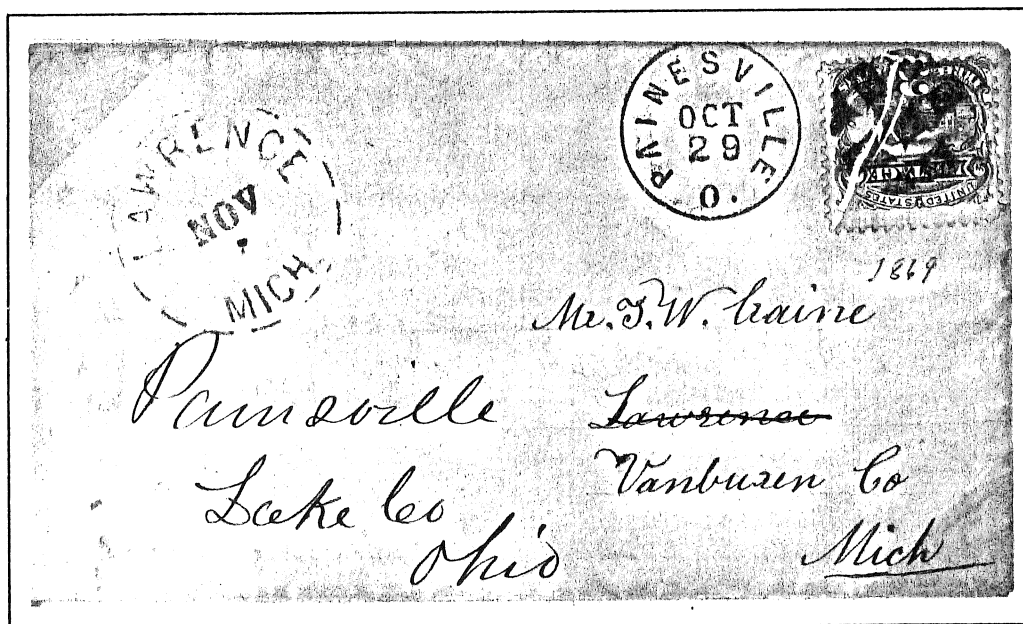


PLATE NO. 11

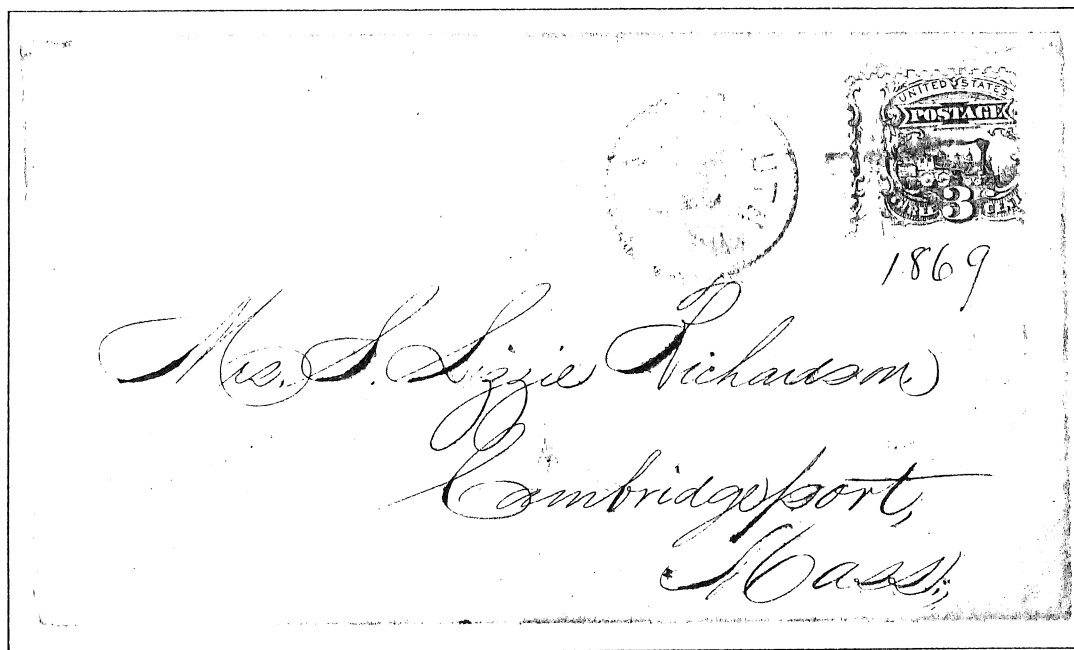


BOTTOM ARROW

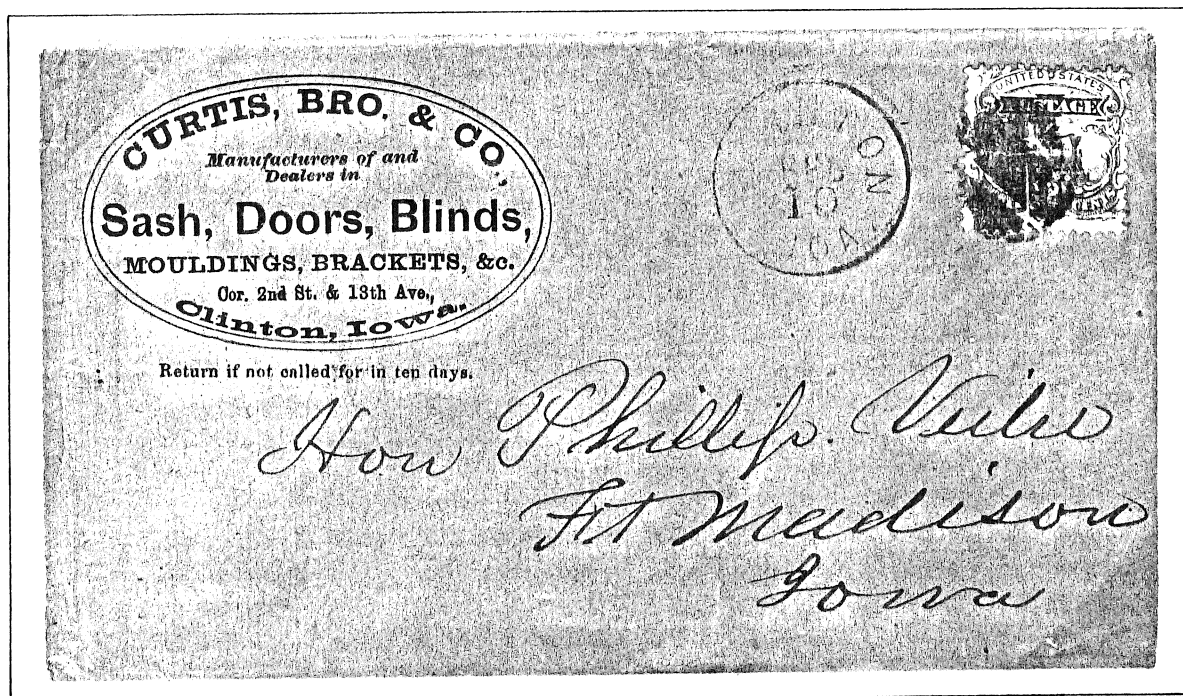


DOUBLE CREASE

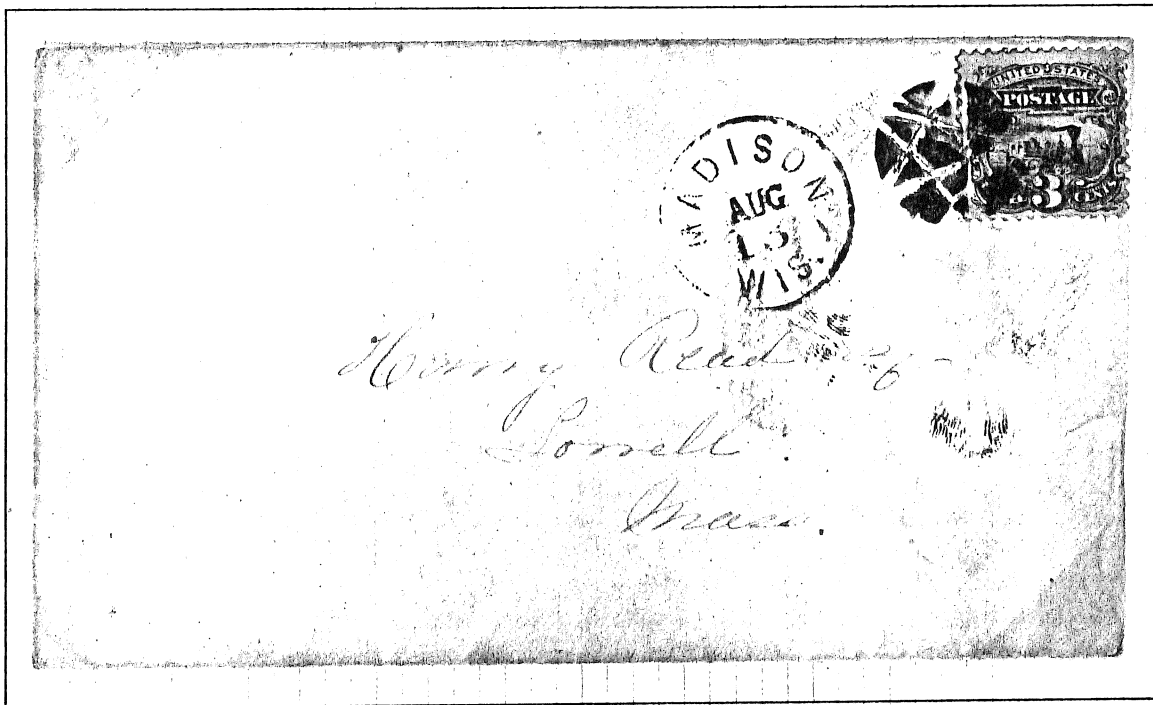
CRACKED PLATES



NEARLY VERTICAL CRACK AT LEFT OF STAMP DESIGN

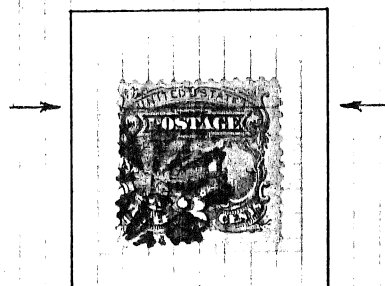


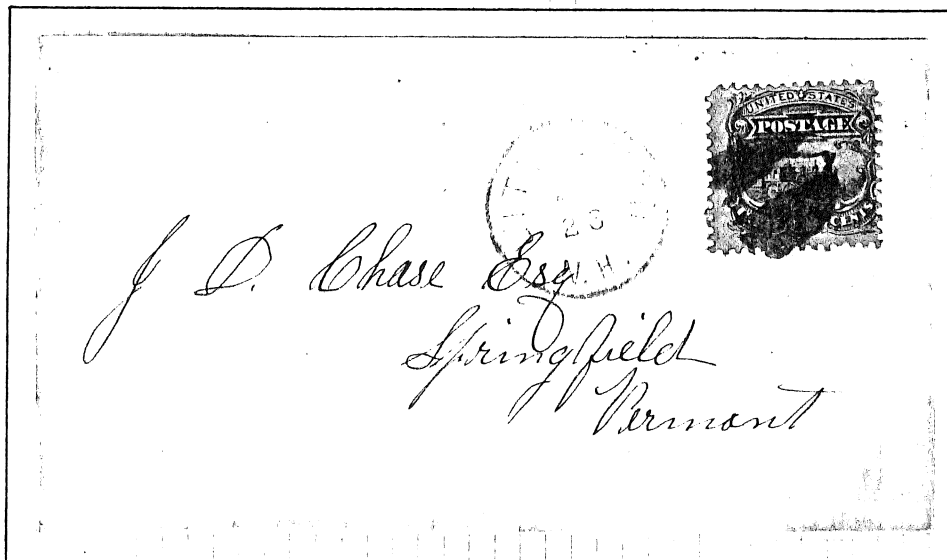
THE "FLUTTERCRACK". WELL-KNOWN
 DOUBLE CRACK ACROSS LOWER LEFT
 PORTION OF 3-CENT 1869.



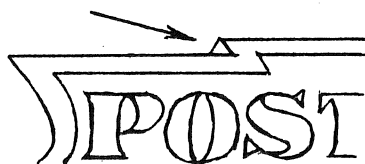
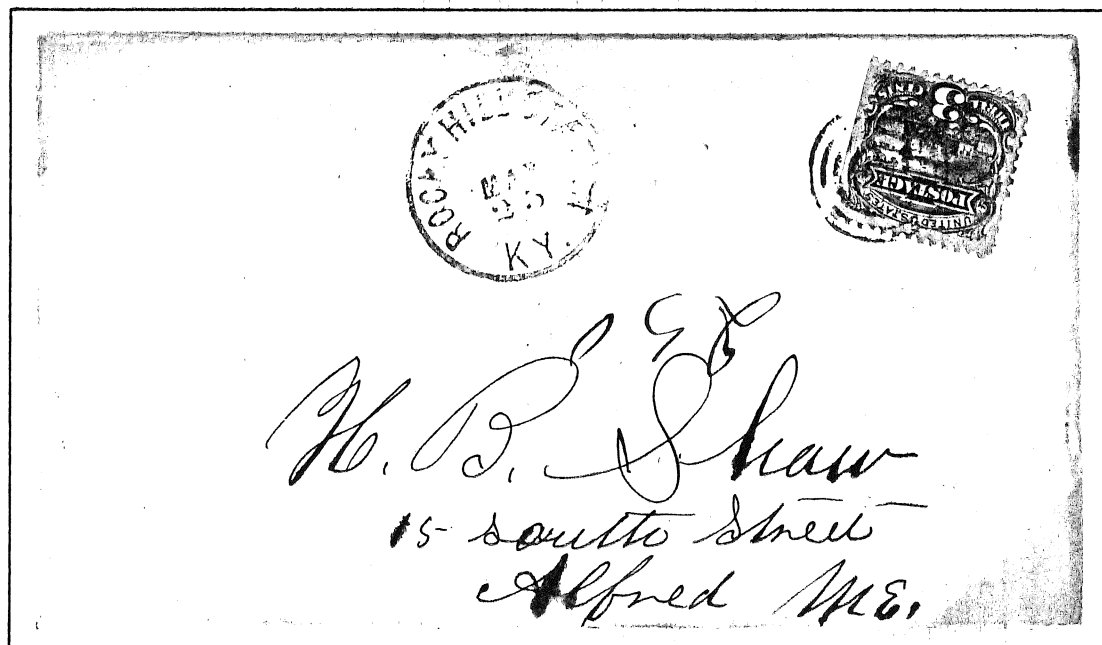
NEARLY HORIZONTAL CRACK OR SCRATCH
THROUGH "POSTAGE" LABEL

SCORED PLATE





"GRAY PAPER" VARIETY. UNUSUAL DEPTH OF PAPER COLOR. A POSSIBLE EXPERIMENTAL PAPER USED AT SOME EASTERN POST OFFICES.



"TRIANGLE-OVER-O" VARIETY. A DIAGONAL LINE AT TOP LEFT SIDE OF POSTAGE LABEL CREATES A TRIANGLE OVER THE "O" OF POSTAGE.

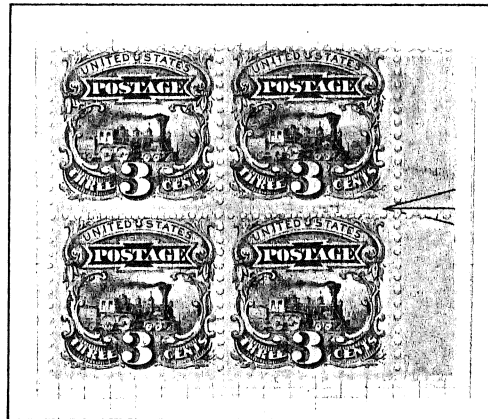
FRESH ENTRY

TRANSFER ROLL INCORRECTLY ENTERED ON PRINTING PLATE BUT LATER WAS RE-ENTERED IN PROPER POSITION. INCOMPLETE BURNISHING LEFT REMNANT OF EARLIER ENTRY.

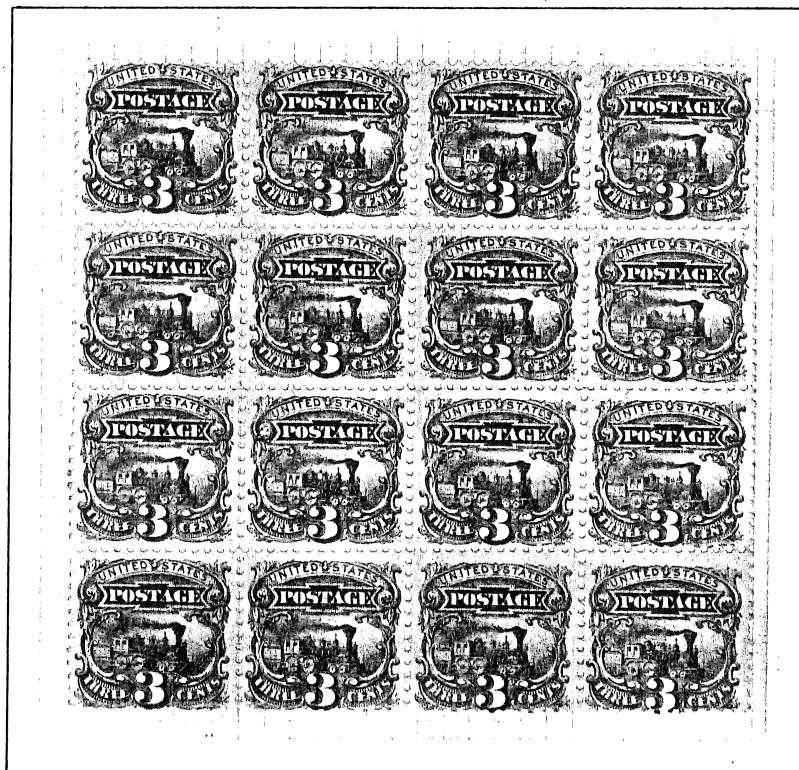


FAINT EXTRA ORNAMENT IS
REMNANT OF TOP ORNAMENT
POSITIONED BY MISPLACED
TRANSFER ROLL. MINT. ●●

MULTIPLES



RIGHT ARROW BLOCK OF FOUR



BLOCK OF SIXTEEN



BLOCK OF SIX SHOWING
IMPRINT AT UPPER LEFT



BLOCK OF TWELVE POSSIBLY
USED ON A PACKAGE WRAPPER

PLATE SCRATCHES

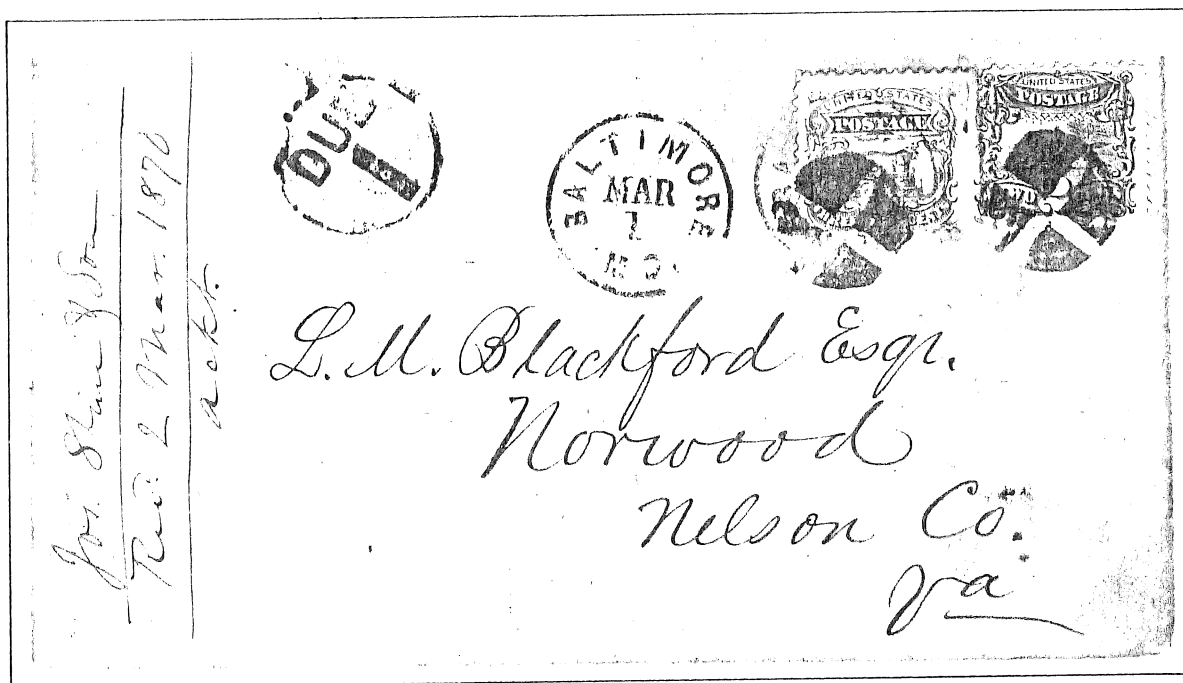


ARROW STAMP

HEAVY SCRATCH
IN GUTTER AT
RIGHT OF 11L20

HORIZONTAL PLATE
SCRATCH AT UPPER
LEFT OF 11L20
EXTENDING ONTO
11L19

LEFT PANE TOP PLATE BLOCK FROM PLATE 11 **



THREE-CENT 1869 POSITION 11L20 AND TWO-CENT 1869. "DUE 1" MARKING APPLIED AT BALTIMORE FOR CARRIAGE BY STEAMBOAT DOWN CHESAPEAKE BAY AND UP JAMES RIVER TO NORWOOD, VIRGINIA.

PLATES

THE 3-CENT 1869 STAMP WAS INITIALLY PRINTED FROM SIX PLATES, I.E., PLATES 7, 8, 9, 10, 11 AND 12. LATER PRINTINGS WERE FROM PLATES 25 AND 26 AND STILL LATER FROM PLATES 29 AND 30. PLATE NUMBERS WERE PRINTED IN THE MARGINS OF EACH PANE AT THE TOP AND BOTTOM OF THE SECOND VERTICAL ROW FROM THE GUTTER BETWEEN THE PANES.

MANY PLATE NUMBER STAMPS ARE "CAPTURE COPIES". HOWEVER, IT IS POSSIBLE TO IDENTIFY A TOP PLATE NUMBER STAMP WITHOUT ANY OF THE NUMBER BEING VISIBLE BY THE PLATE NUMBER POSITION DOT. DOT POSITION, SIZE AND SHAPE VARY WITH PLATE NUMBER AND PANE.



BOTTOM LEFT STRIP FROM PLATE NO. 7

PLATE 7

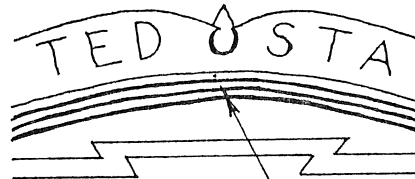
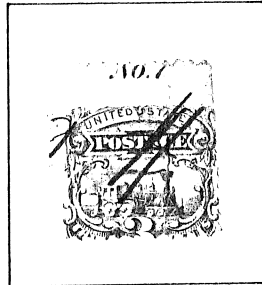
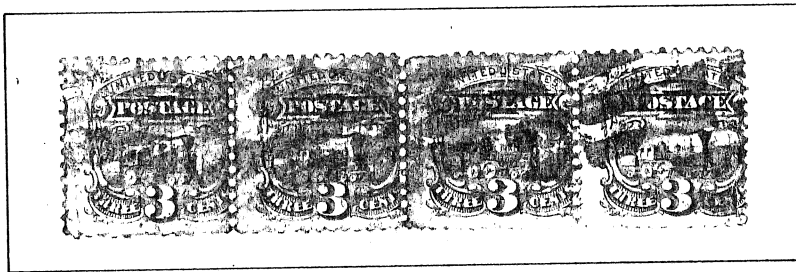
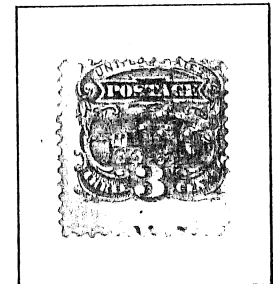


PLATE NUMBER POSITION DOT

TOP PLATE NO. 7, LEFT PANE. DOT POSITION IS IN THE MIDDLE OF THE WHITE ARC UNDER "UNITED STATES," AND SLIGHTLY LEFT OF CENTER OF THE MIDDLE ORNAMENT.



STRIP OF FOUR, RIGHT STAMP SHOWING PLATE 7 POSITION DOT. PROVES LEFT PANE POSITION.



BOTTOM PLATE NO. 7



TOP PLATE NO. 7, RIGHT PANE. DOT POSITION SIMILAR BUT EXACTLY UNDER THE CENTER OF THE MIDDLE ORNAMENT.

PLATE 8

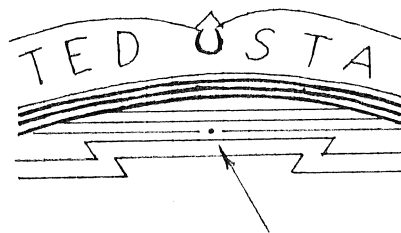
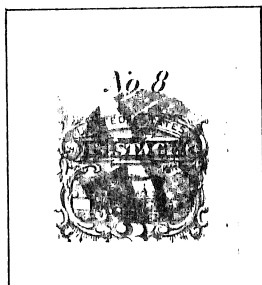
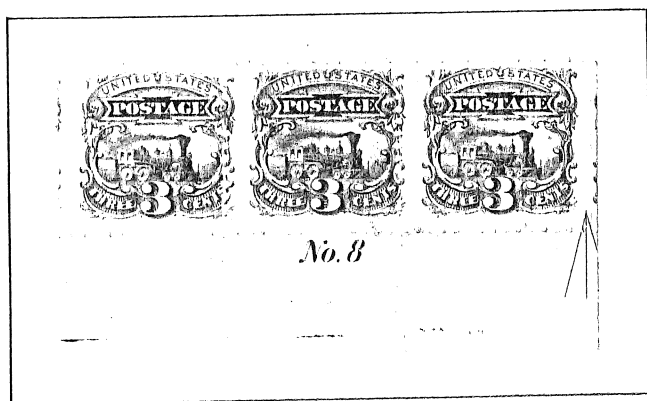
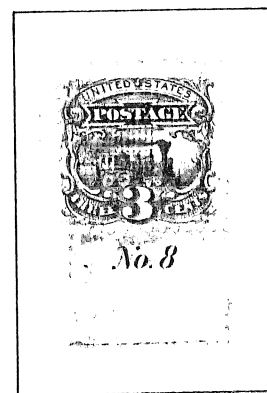


PLATE NUMBER POSITION DOT

TOP PLATE NO. 8 FROM LEFT PANE. DOT POSITION IS IN THE MIDDLE OF THE FIRST HORIZONTAL SHADING LINE ABOVE THE "POSTAGE" LABEL AND IS SURROUNDED BY A HALO.



BOTTOM PLATE NO. 8, LEFT PANE. LARGEST KNOWN PLATE 8 MULTIPLE IN MINT CONDITION.



BOTTOM PLATE NO. 8, RIGHT PANE.

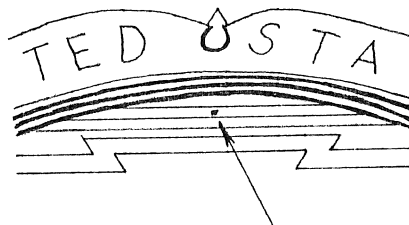
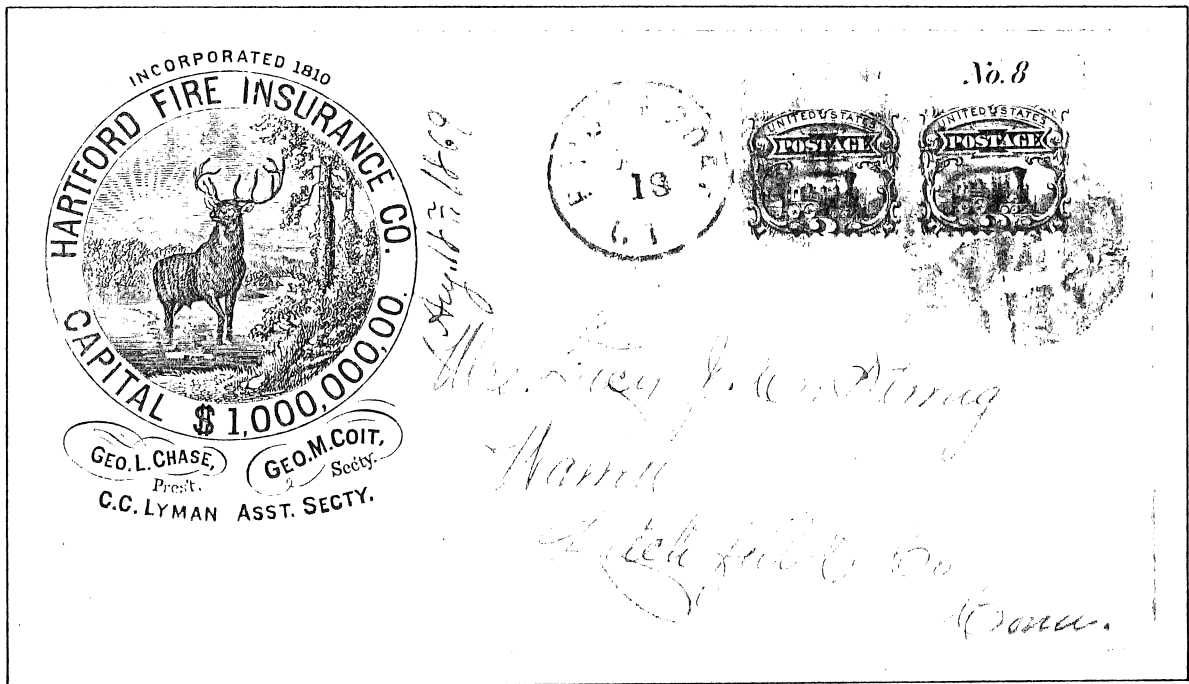
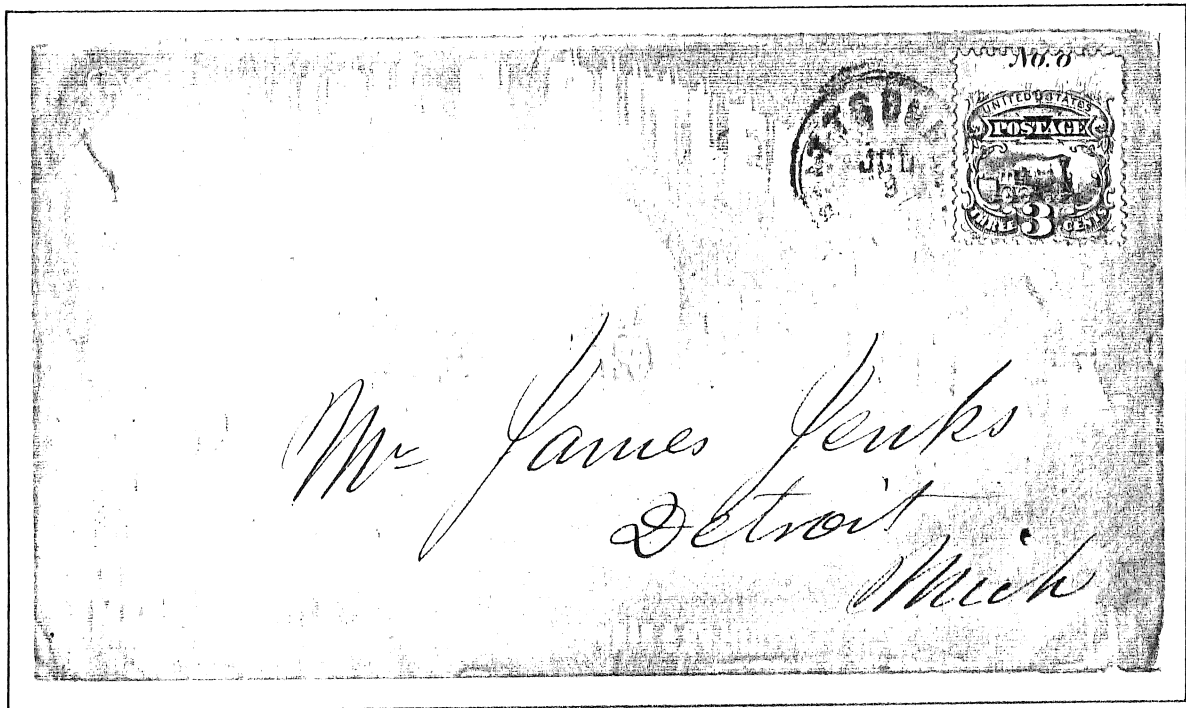


PLATE NUMBER POSITION DOT

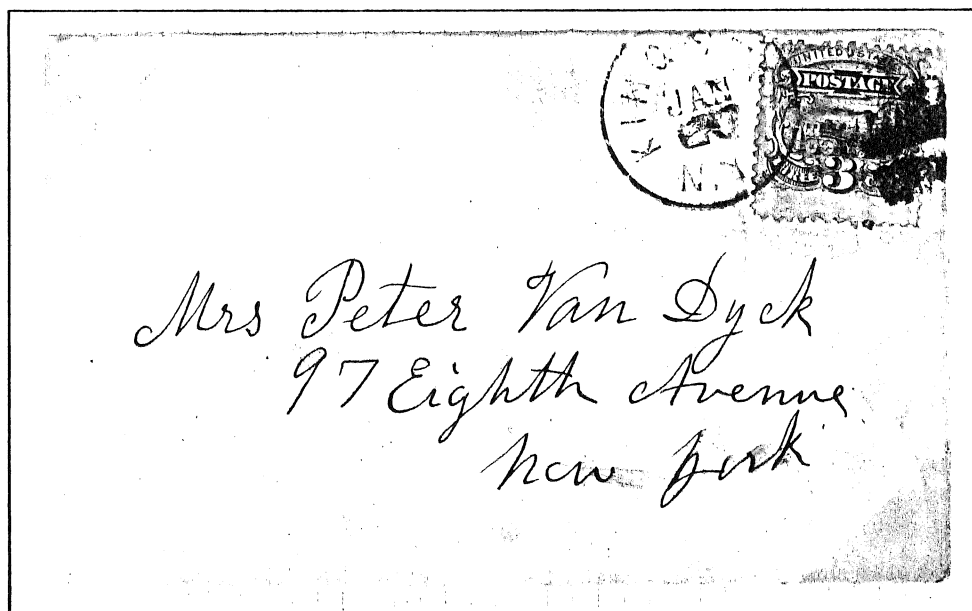
TOP PLATE NO. 8 FROM THE RIGHT PANE. THE POSITION DOT IS HIGHER, BETWEEN THE SECOND AND THIRD HORIZONTAL SHADING LINES ABOVE THE "POSTAGE" LABEL.



TOP PLATE NO. 8, LEFT PANE. LEFT STAMP IS PERFORATED ON LEFT SIDE AND SHOWS NO ARROW, PROVING PANE POSITION. POSITION DOT IN LOWER OF TWO PLATE NO. 8 POSITIONS.



TOP PLATE NO. 8, RIGHT PANE



BOTTOM PLATE NO. 8



BOTTOM LEFT INDIA PROOF PLATE BLOCK FROM PLATE NO. 8

PLATE 9

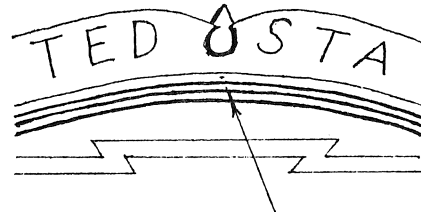
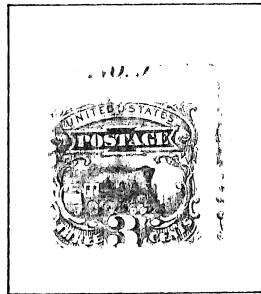


PLATE NUMBER POSITION DOT

TOP PLATE NO. 9, PANE UNKNOWN. DOT POSITION IS IN THE MIDDLE OF THE WHITE ARC UNDER "UNITED STATES". IT IS VERY FAINT AND IS EXACTLY UNDER THE MIDDLE OF THE TOP ORNAMENT.

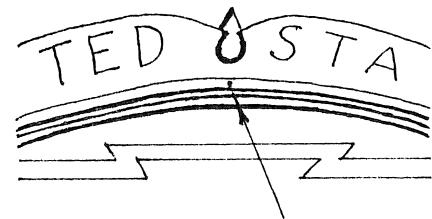
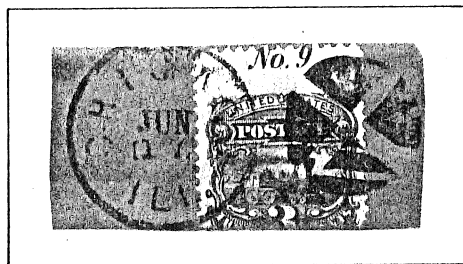
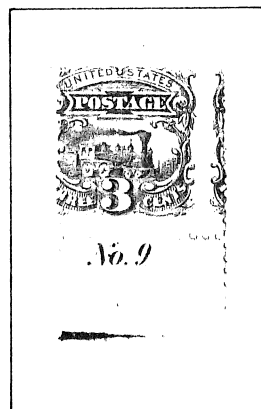


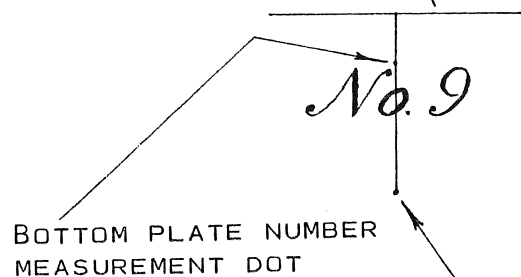
PLATE NUMBER POSITION DOT

TOP PLATE NO. 9. DOT POSITION IS SIMILAR TO ABOVE, BUT THE DOT IS HEAVIER AND ELONGATE, POSSIBLY FROM THE OTHER PANE.



BOTTOM PLATE NO. 9

HORIZONTAL LAYOUT LINE

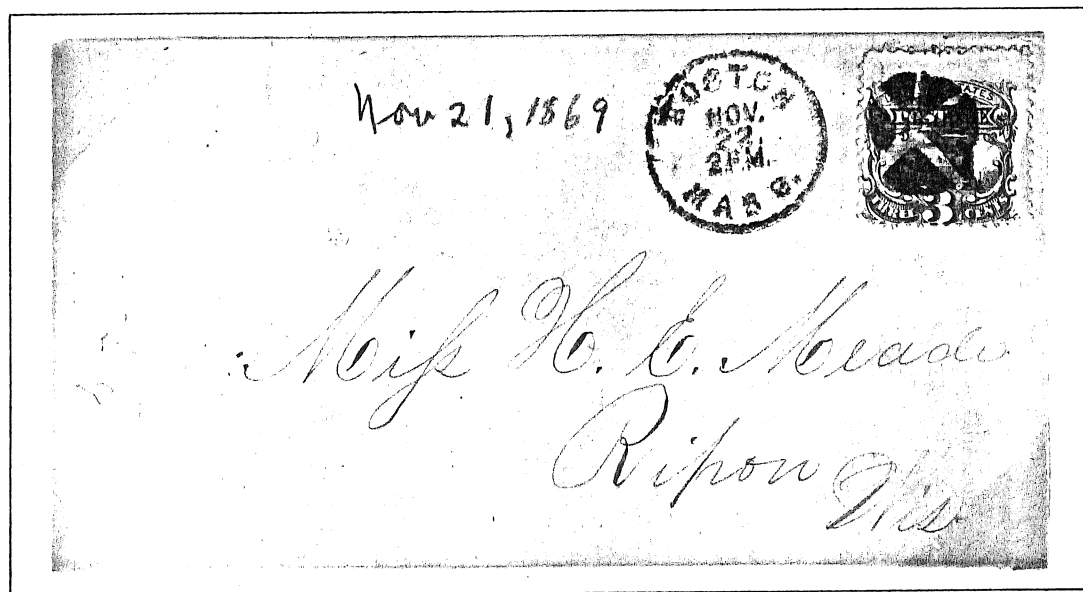


BOTTOM PLATE NUMBER MEASUREMENT DOT

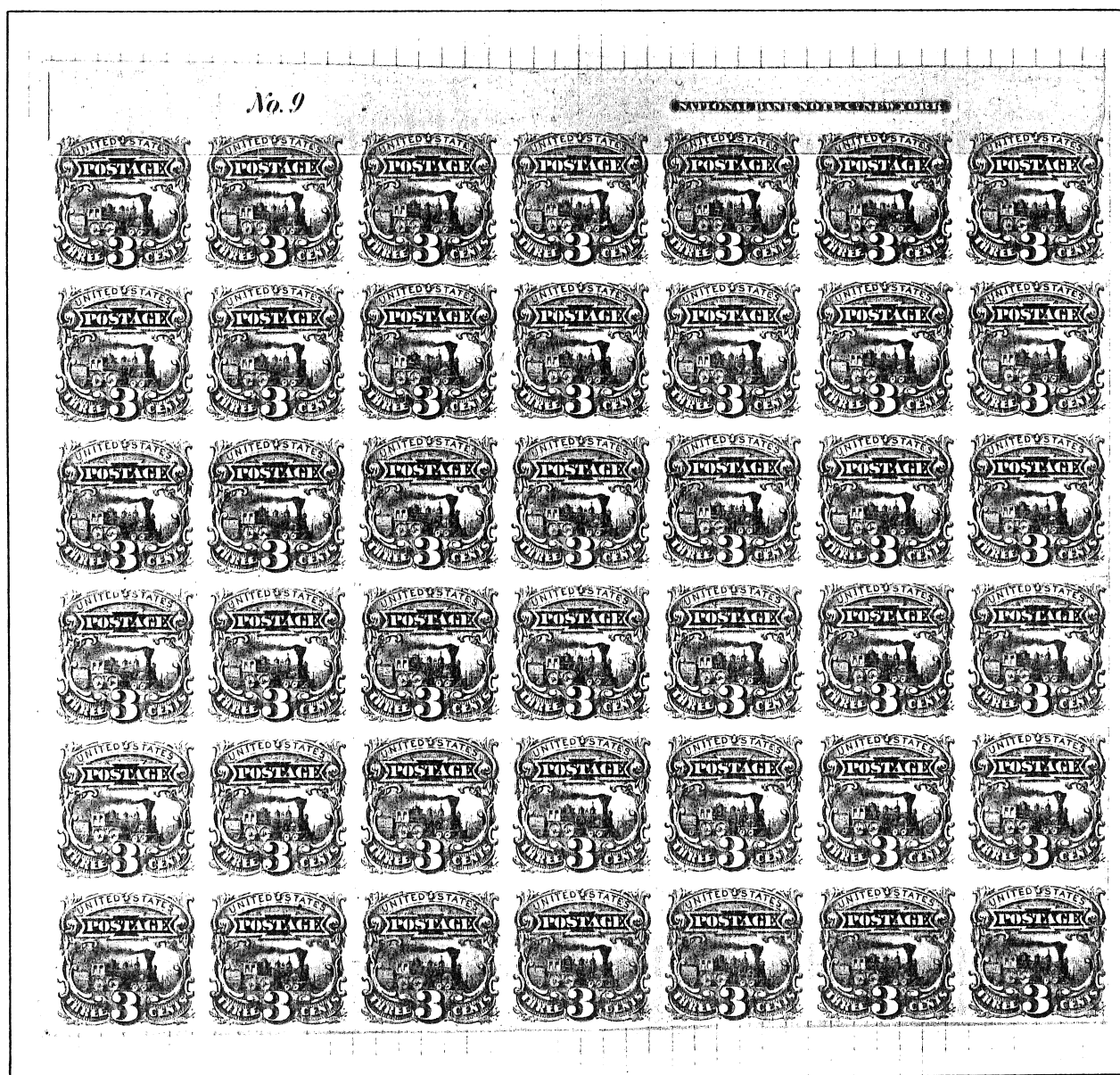
BOTTOM PLATE NUMBER POSITION DOT



BOTTOM PLATE NO. 9



TOP PLATE NO. 9



TOP RIGHT INDIA PROOF PLATE BLOCK OF 42 FROM PLATE 9

PLATE 10

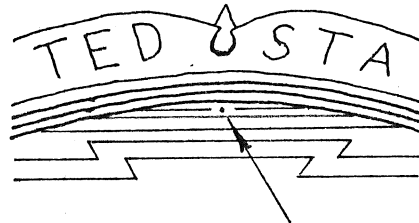
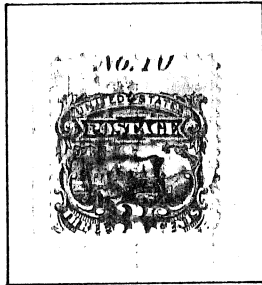
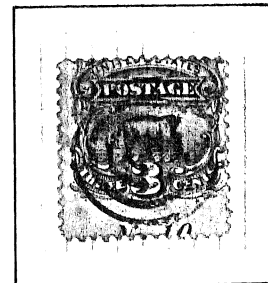


PLATE NUMBER POSITION DOT

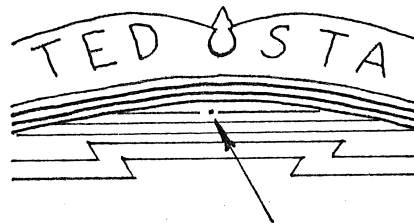
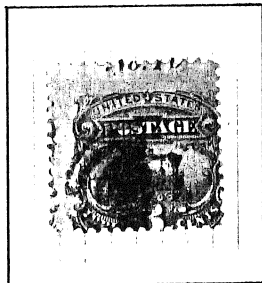
TOP PLATE NO. 10, LEFT PANE. DOT POSITION IS IN THE TOP HORIZONTAL SHADING LINE ABOVE THE "POSTAGE" LABEL, IS UNDER THE CENTER OF THE TOP MIDDLE ORNAMENT, AND HAS A HALO SURROUNDING IT.



STRIP OF THREE, MIDDLE STAMP SHOWING PLATE 10 POSITION DOT. ARROW STAMP PROVES LEFT PANE.

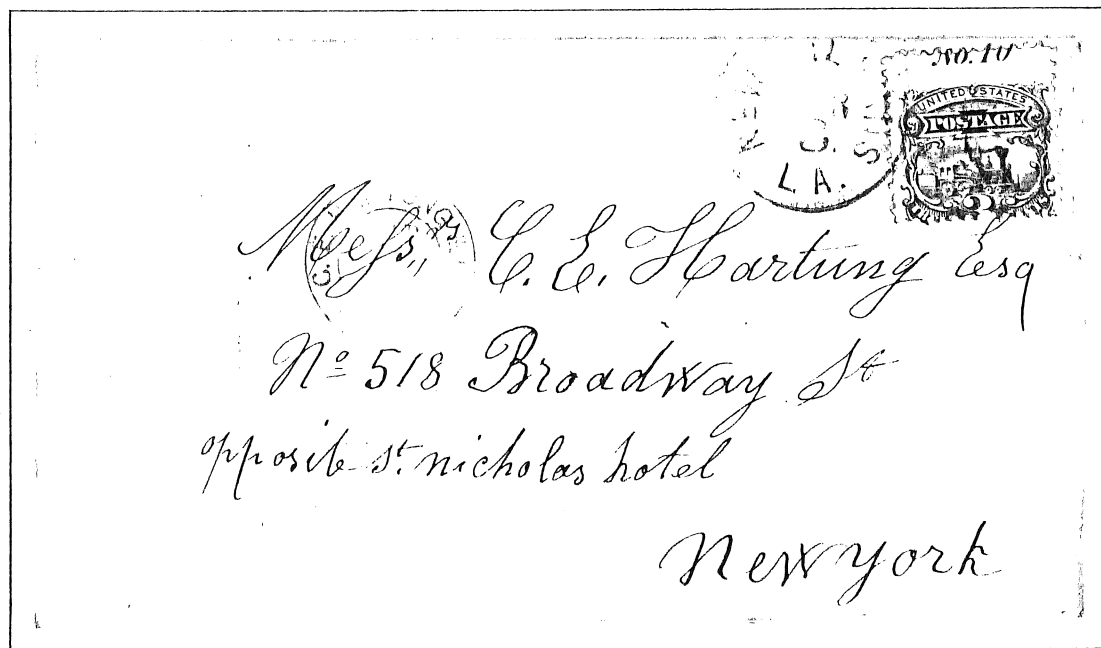


BOTTOM PLATE NO. 10

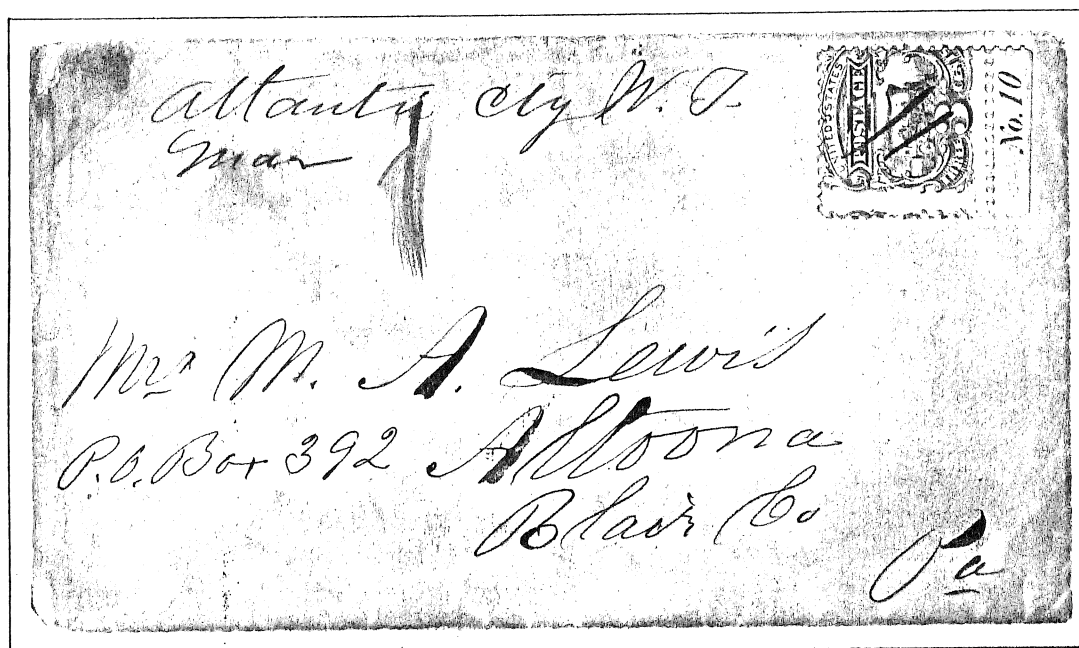


PLAT NUMBER POSITION DOT

TOP PLATE NO. 10. DOT POSITION SLIGHTLY DIFFERENT INDICATING THIS STAMP IS FROM THE RIGHT PANE.



TOP PLATE NO. 10, LEFT PANE



BOTTOM PLATE NO. 10

PLATE 11

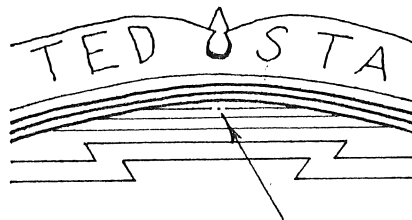
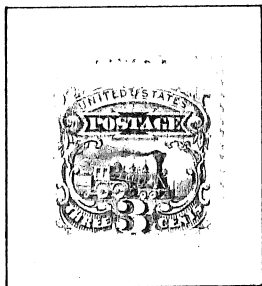


PLATE NUMBER POSITION DOT

TOP PLATE NO. 11, LEFT PANE. DOT POSITION IS IN THE MIDDLE OF THE TOP HORIZONTAL SHADING LINE ABOVE THE "POSTAGE" LABEL. THIS IS SIMILAR TO PLATE NO. 10, BUT DOT IS SMALL AND FAINT.

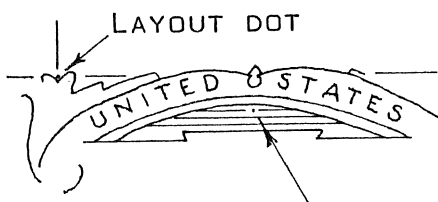
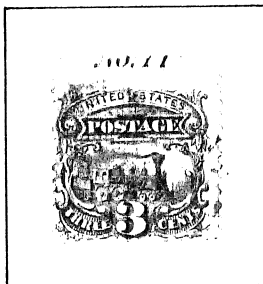
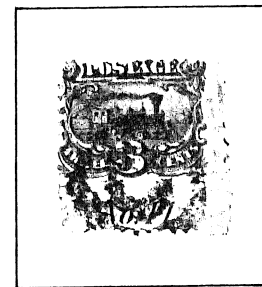
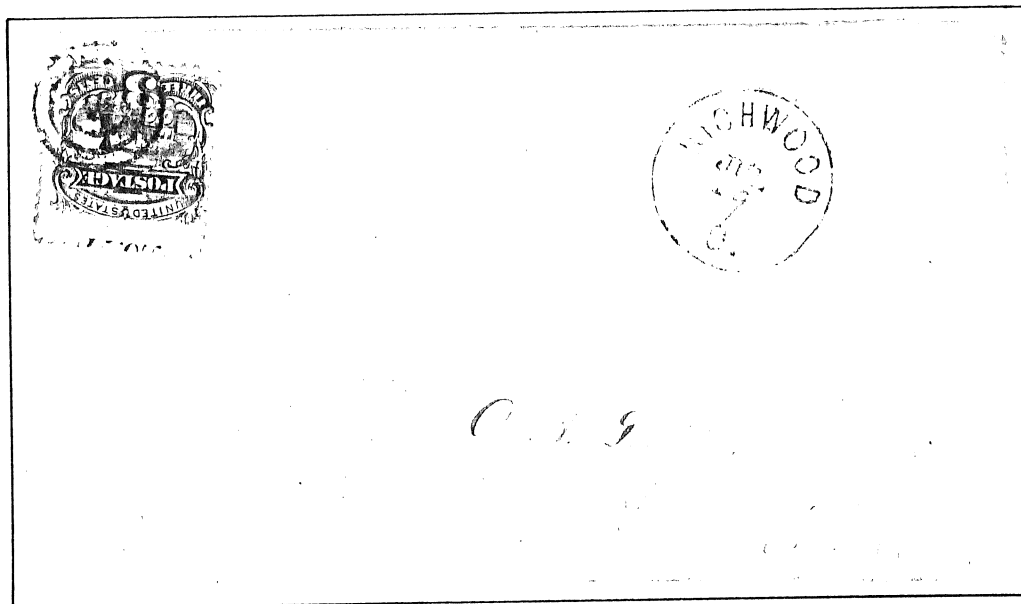


PLATE NUMBER POSITION DOT



TOP PLATE NO. 11, RIGHT PANE. DOT POSITION IS SIMILAR TO LEFT PANE BUT LAYOUT DOT IN UPPER LEFT CORNER IS IN A LOWER POSITION.

BOTTOM PLATE NO. 11



TOP PLATE NO. 11, LEFT PANE

PLATE 12

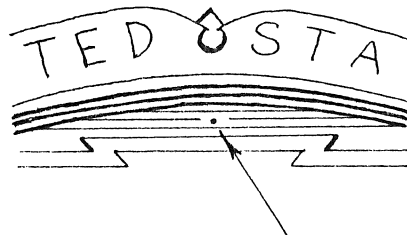
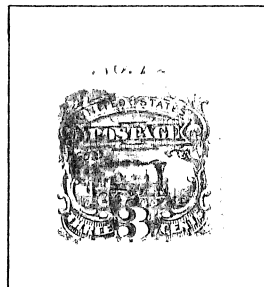
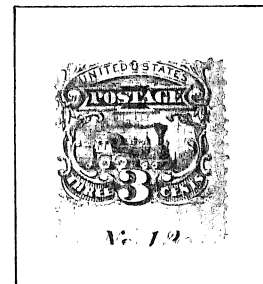


PLATE NUMBER POSITION DOT

PLATE NO. 12, RIGHT PANE. DOT POSITION IS IN CENTER AND JUST BELOW MIDDLE HORIZONTAL SHADING LINE ABOVE THE "POSTAGE" LABEL. IT IS ROUND, HEAVY AND HAS A SLIGHT HALO. UPPER LEFT LAYOUT DOT TOUCHES THE ORNAMENT.



PAIR FROM PLATE 12 RIGHT PANE. LEFT STAMP SHOWS TIP OF ARROW.



BOTTOM PLATE NO. 12

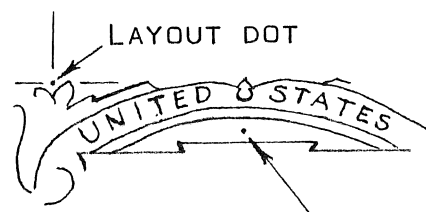
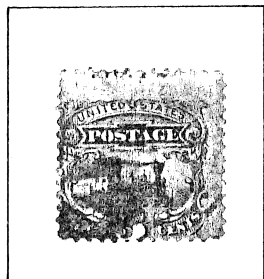
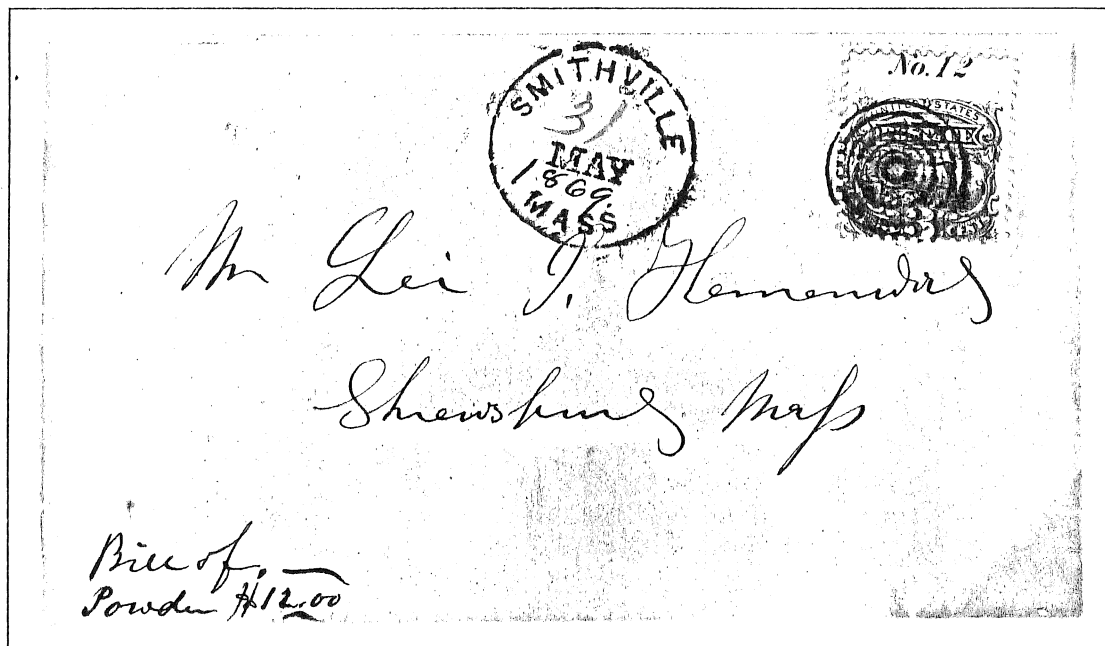
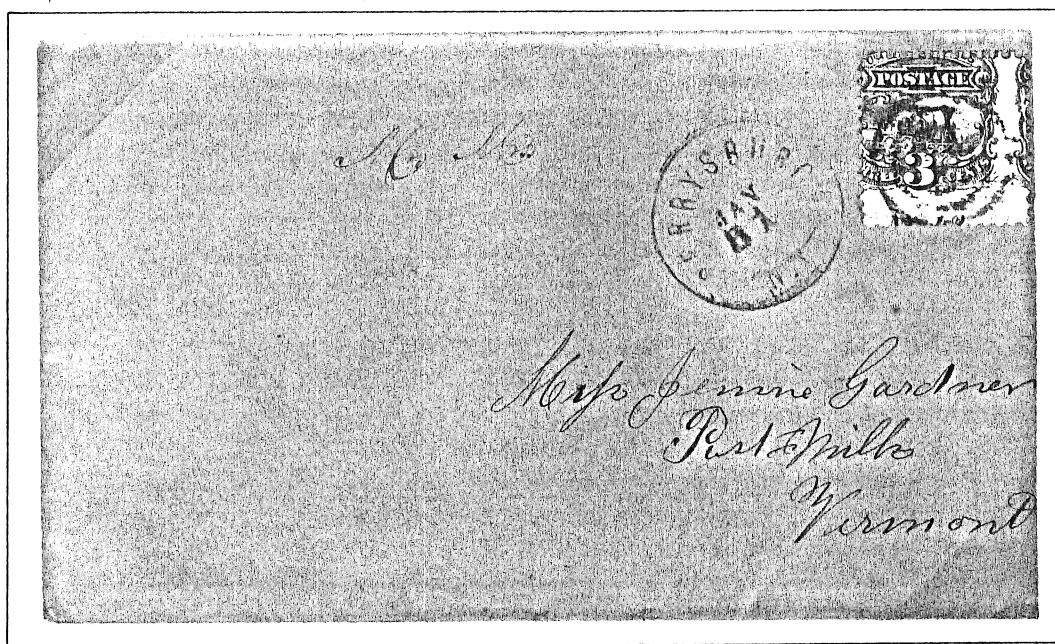


PLATE NUMBER POSITION DOT

PLATE NO. 12, LEFT PANE. DOT POSITION SIMILAR TO RIGHT PANE BUT LAYOUT DOT IS ABOVE THE ORNAMENT.



TOP PLATE NO. 12, RIGHT PANE



BOTTOM PLATE NO. 12

PLATE 25

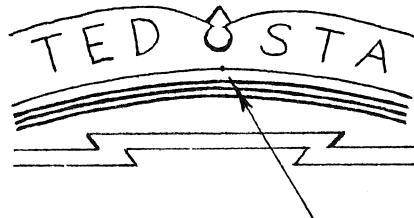
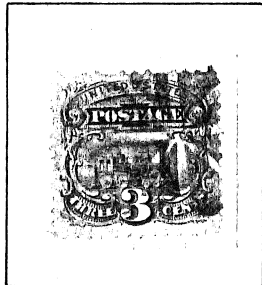
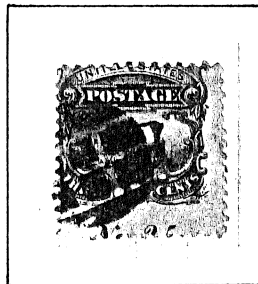
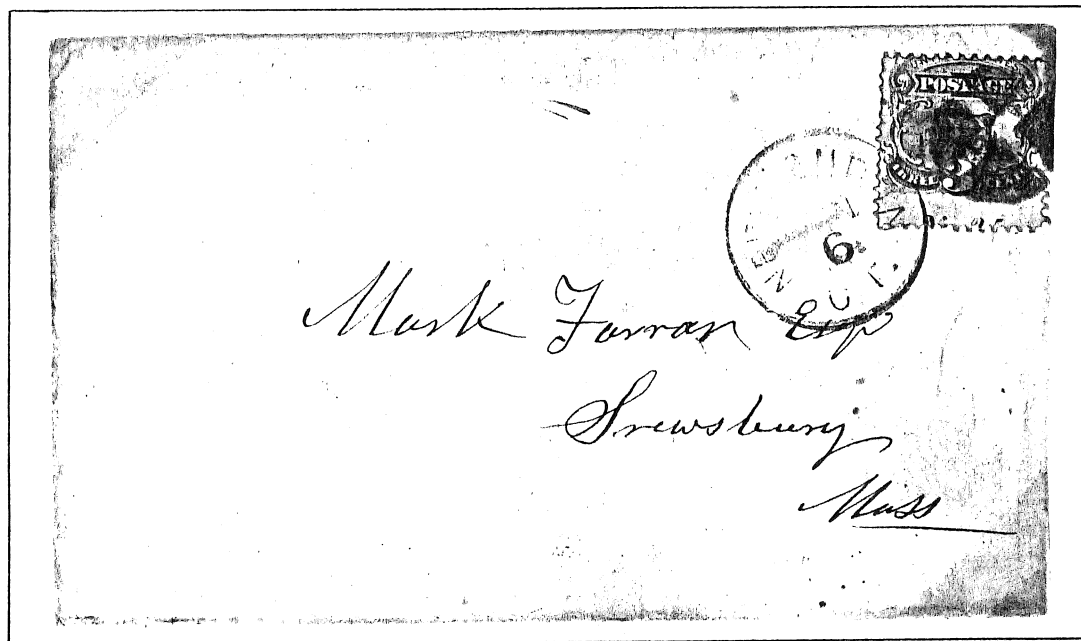


PLATE NUMBER POSITION DOT

TOP PLATE NO. 25, PANE UNKNOWN. DOT POSITION IS IN THE MIDDLE OF THE TOP ARC UNDER THE RIGHT SIDE OF THE TOP ORNAMENT.



BOTTOM PLATE NO. 25



BOTTOM PLATE NO. 25 ●●

PLATE 26

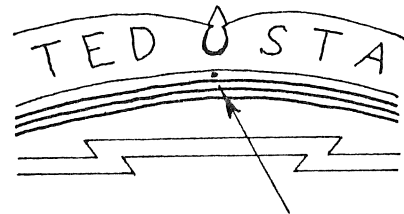
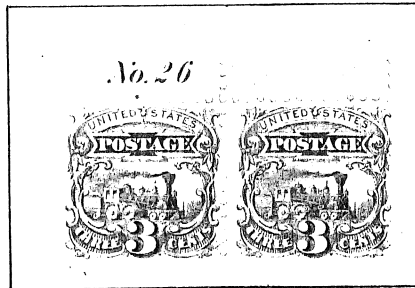
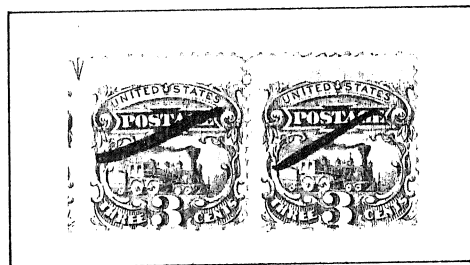
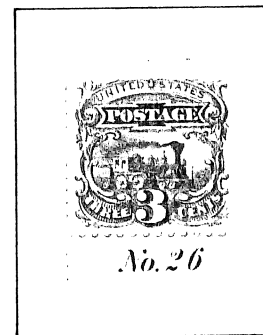


PLATE NUMBER POSITION DOT

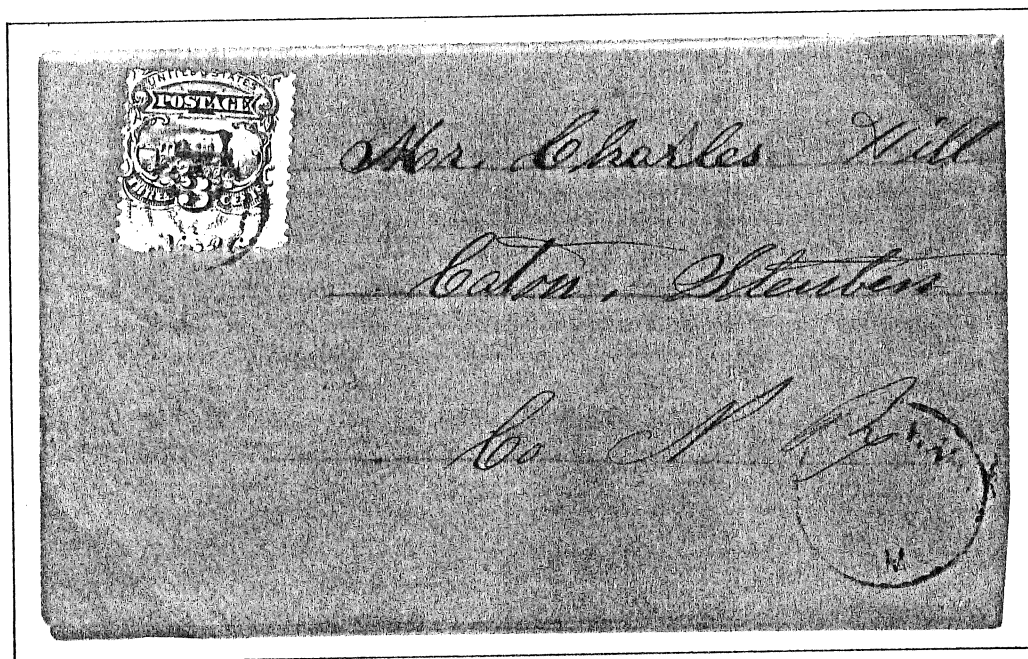
TOP PLATE NO. 26, RIGHT PANE. DOT POSITION IS IN THE CENTER OF THE TOP WHITE ARC. SIMILAR TO PLATES 7 AND 9, BUT HEAVIER.



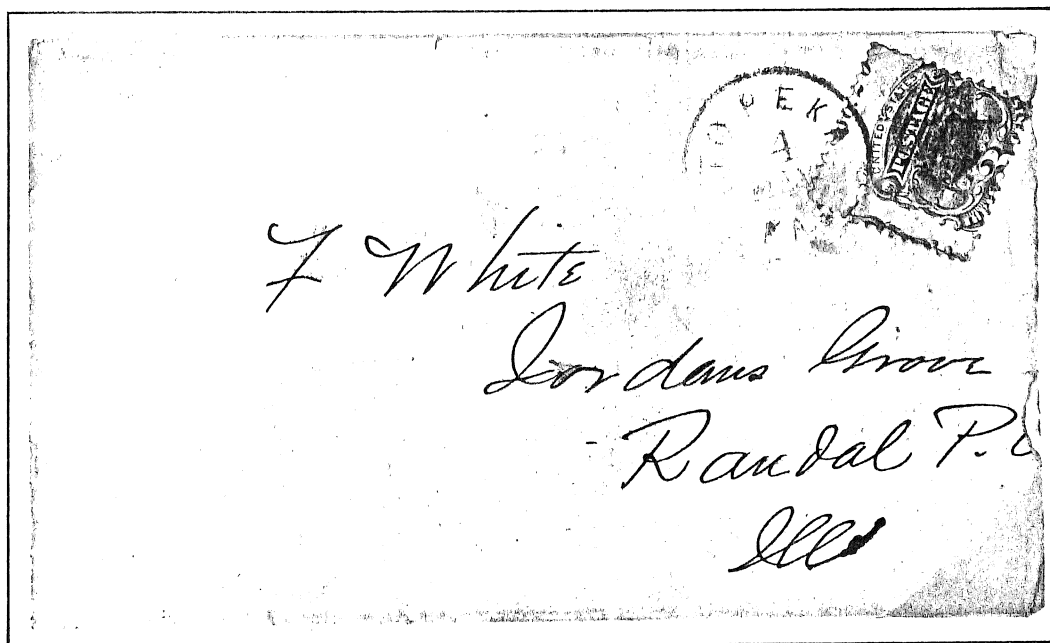
TOP PLATE NO. 26 STAMP AND ARROW STAMP PROVING RIGHT PANE.



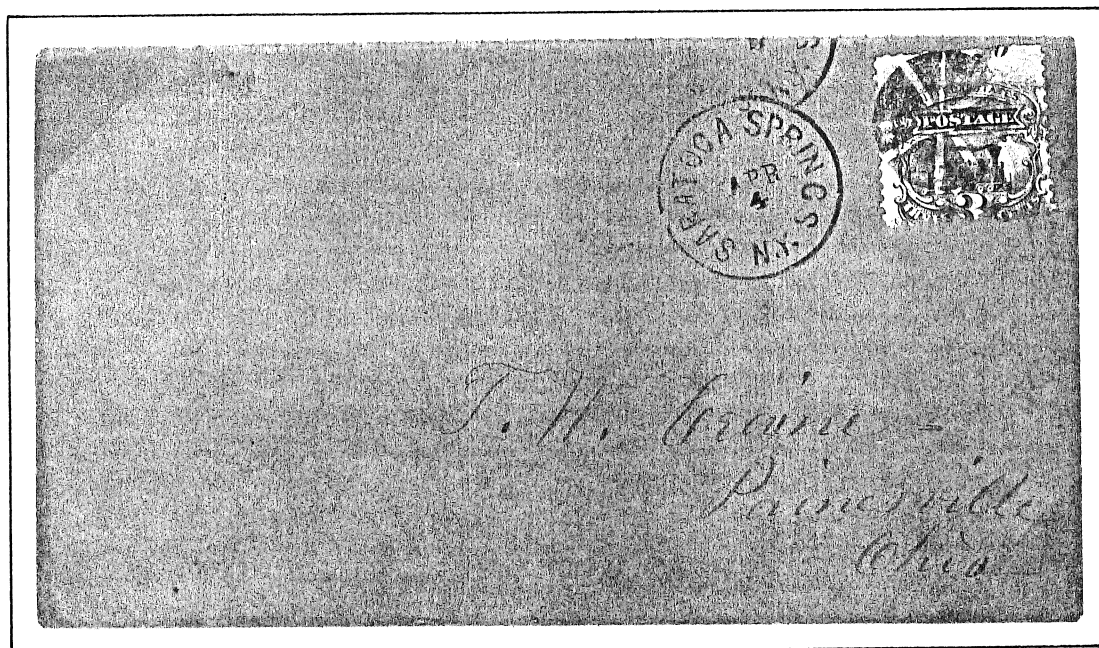
BOTTOM PLATE NO. 26



BOTTOM PLATE NO. 26



TOP PLATE NO. 26, RIGHT PANE.



TOP PLATE NO. 26, LEFT PANE. PLATE DOT IS LARGER, SOMEWHAT ELONGATE AND SLIGHTLY LEFT OF RIGHT PANE POSITION.

PLATES 29 AND 30

THESE TWO PLATES, USED LATE IN THE PRINTING OF 1869 STAMPS, HAD A SHORT PRODUCTION RUN IN THE SPRING OF 1870.

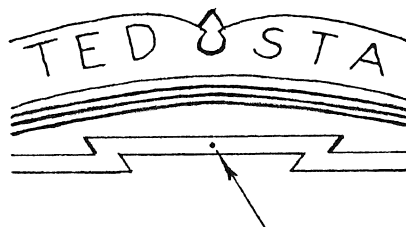
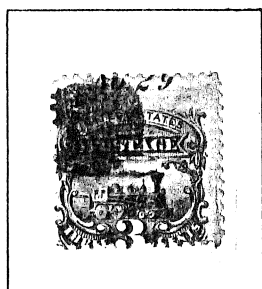
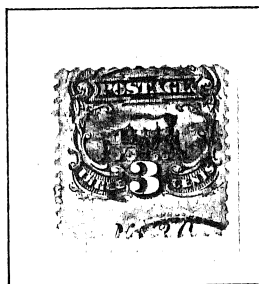


PLATE NUMBER POSITION DOT

TOP PLATE NO. 29, PANE UNKNOWN. A VERY LOW DOT POSITION IS IN THE MIDDLE OF THE "POSTAGE" LABEL BORDER ABOVE THE "T" OF "POSTAGE".



BOTTOM PLATE NO. 30

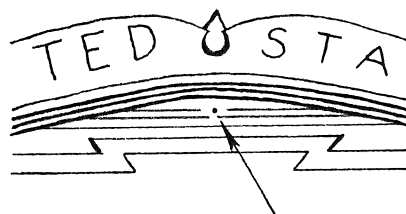
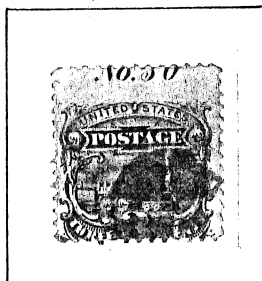
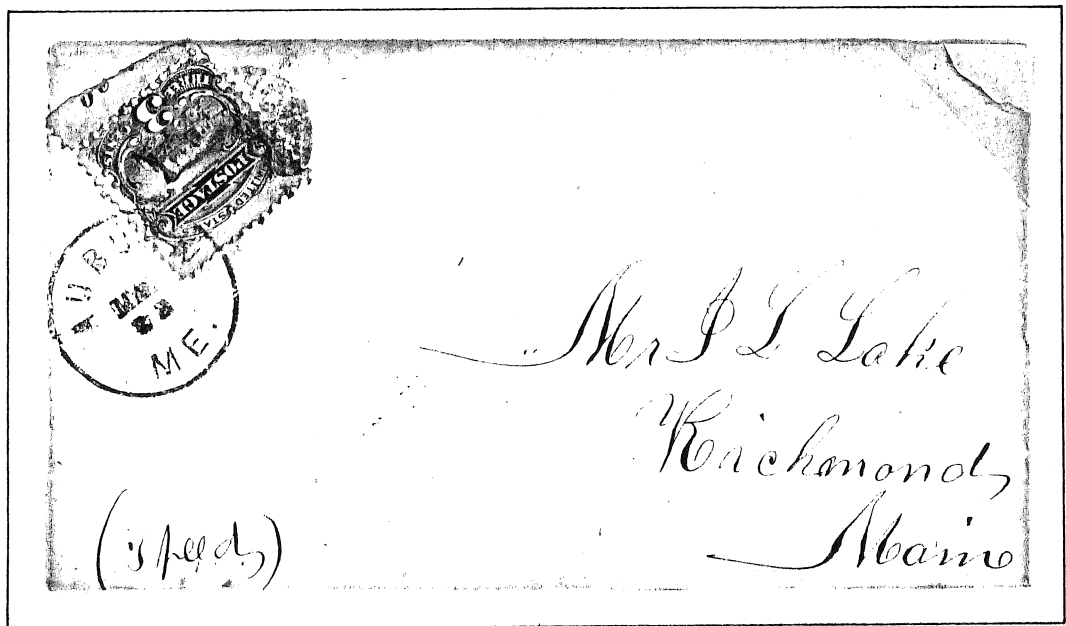


PLATE NUMBER POSITION DOT

TOP PLATE NO. 30, PANE UNKNOWN. DOT POSITION IS IN THE MIDDLE OF THE UPPER HORIZONTAL SHADING LINE, IS FAIRLY HEAVY, AND HAS A HALO THAT BREAKS THE HORIZONTAL SHADING LINE BELOW.

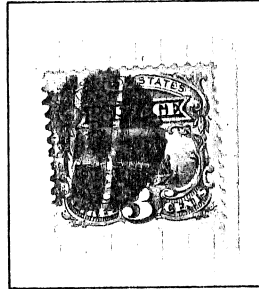


BOTTOM PLATE NO. 30 ●●

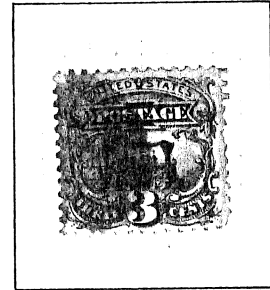
CANCELLATION COLORS



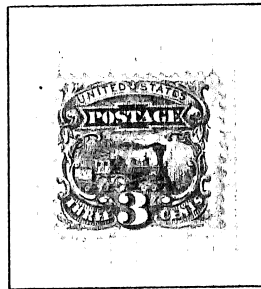
BLACK



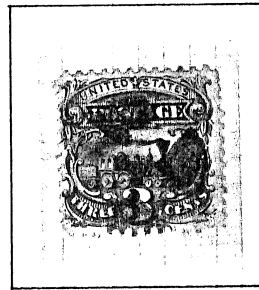
BLUE



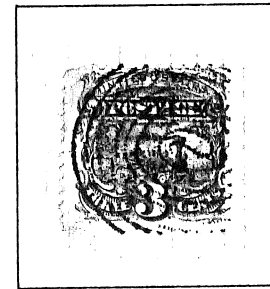
ORANGE



VIOLET



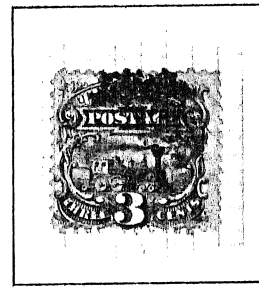
ULTRAMARINE



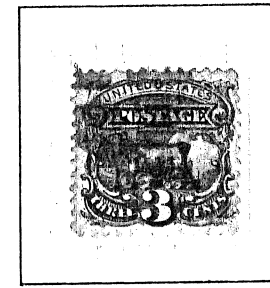
PURPLE



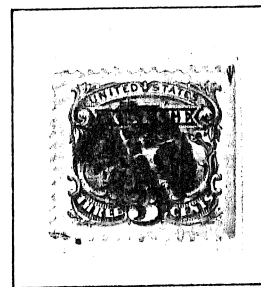
BROWN



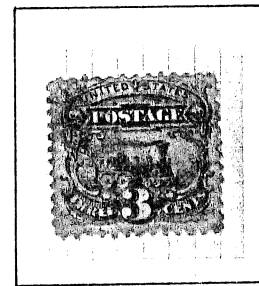
RED



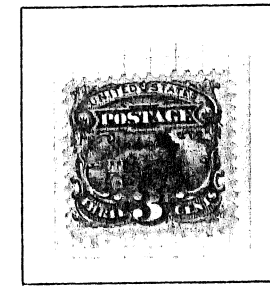
GREEN



OLIVE

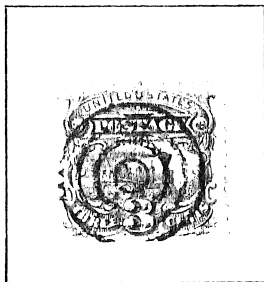


PINK

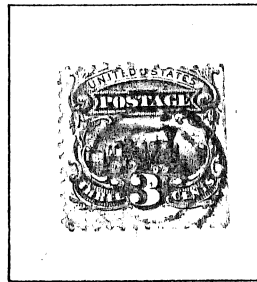


MAGENTA

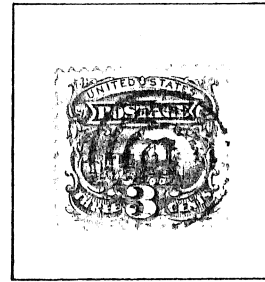
TARGET CANCELS



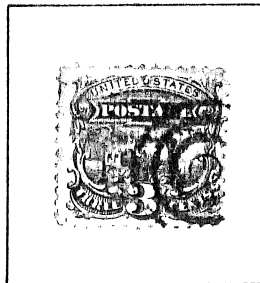
BLACK



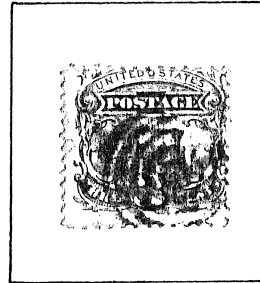
BLUE



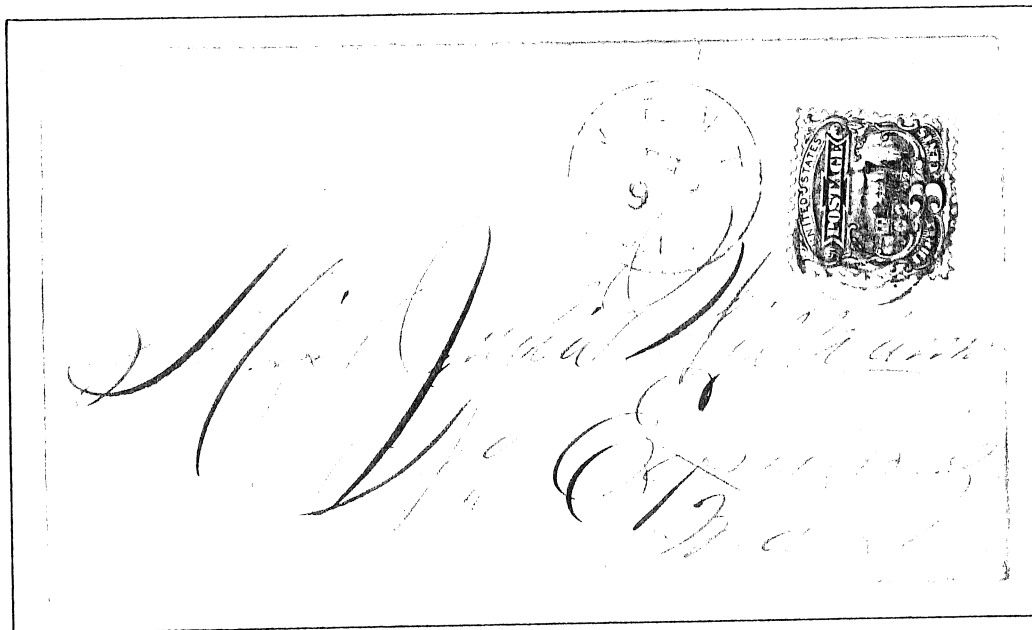
RED



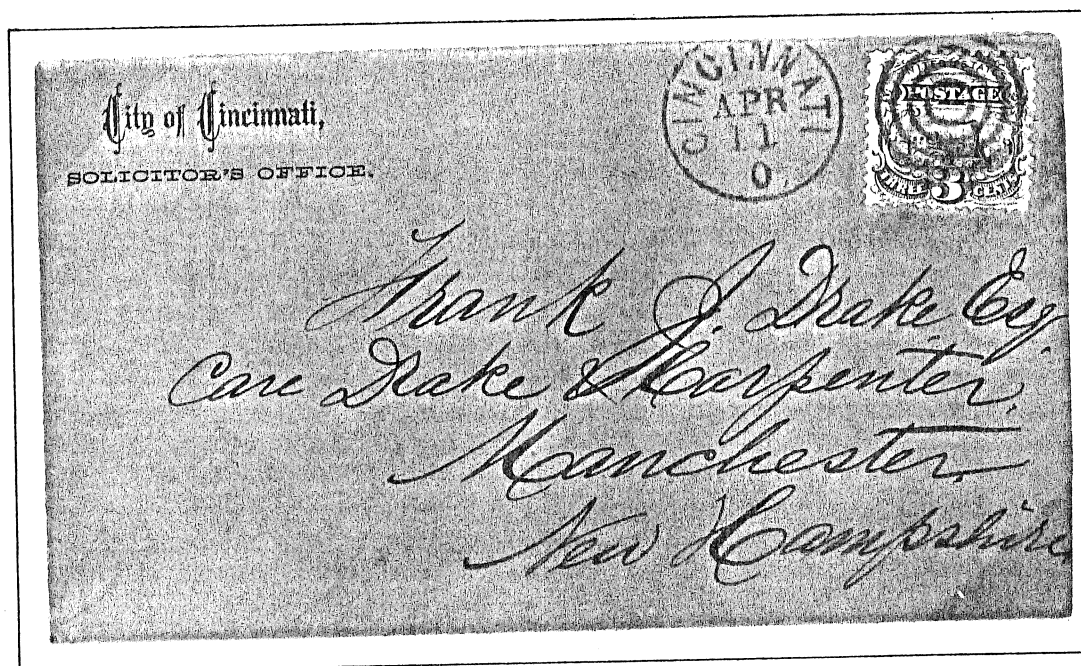
GREEN



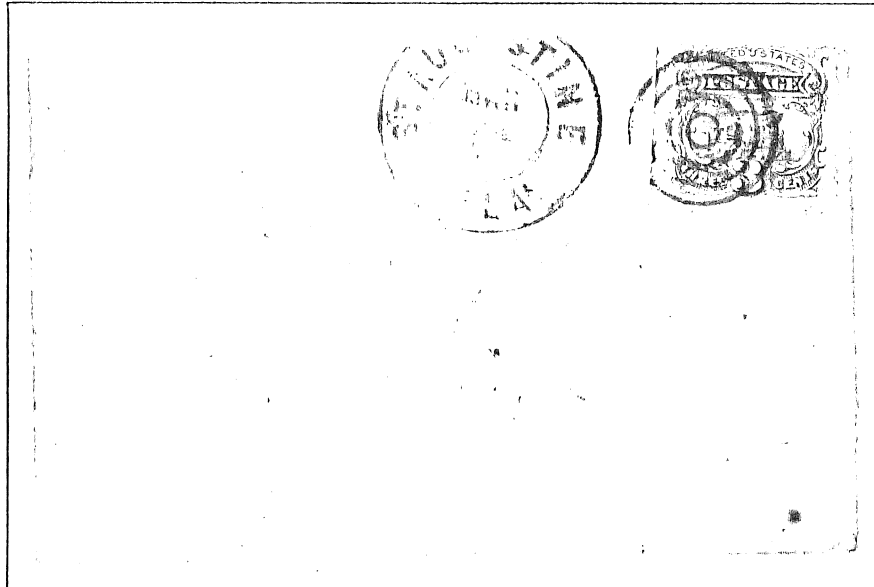
BROWN



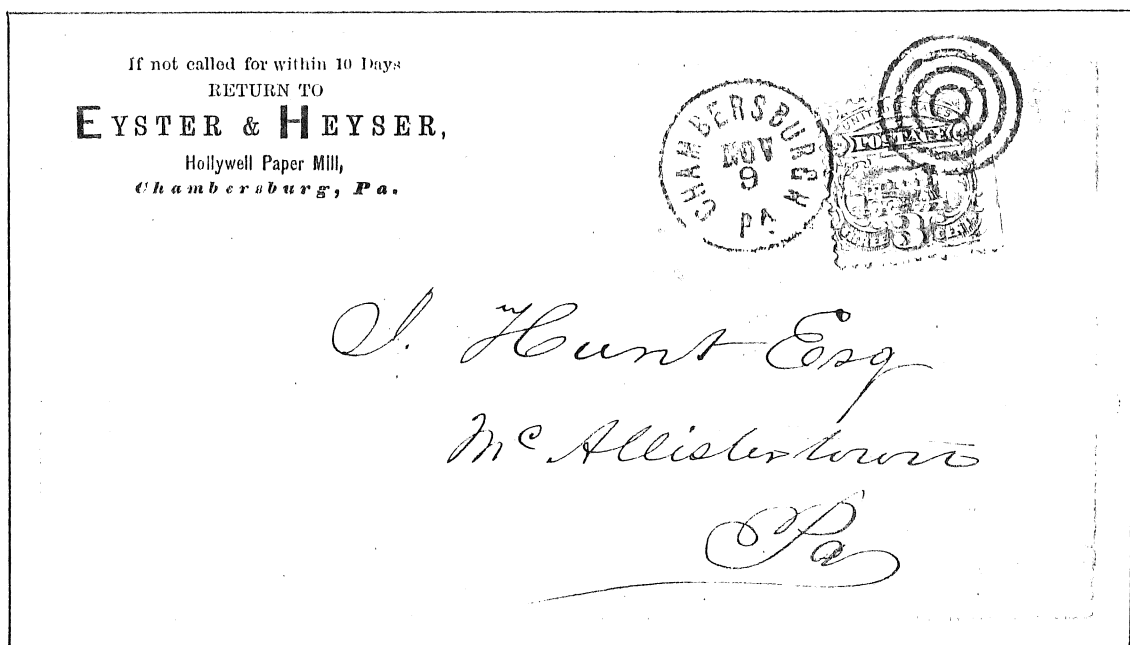
ORANGE - KENT, CONNECTICUT



GREEN - CINCINNATI, OHIO

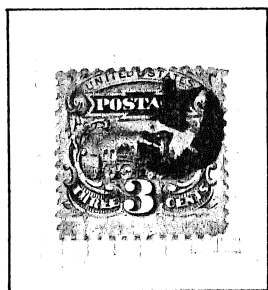


BLUE - ST. AUGUSTINE, FLORIDA



RED - CHAMBERSBURG, PENNSYLVANIA

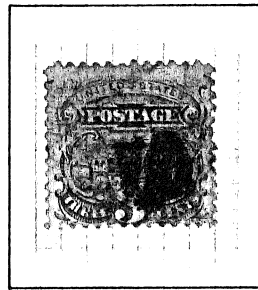
LETTER CANCELS



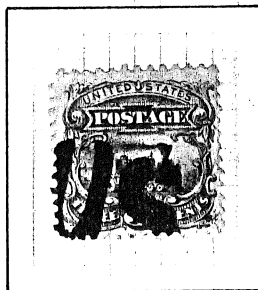
G



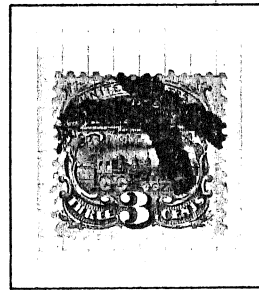
RED M



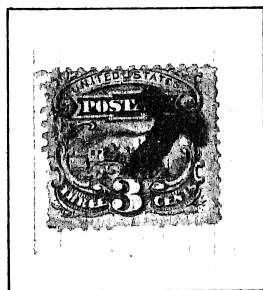
S



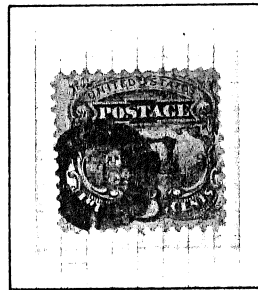
US



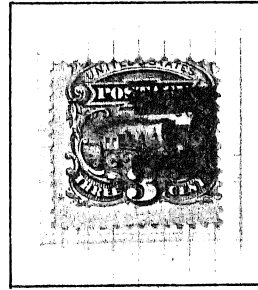
K



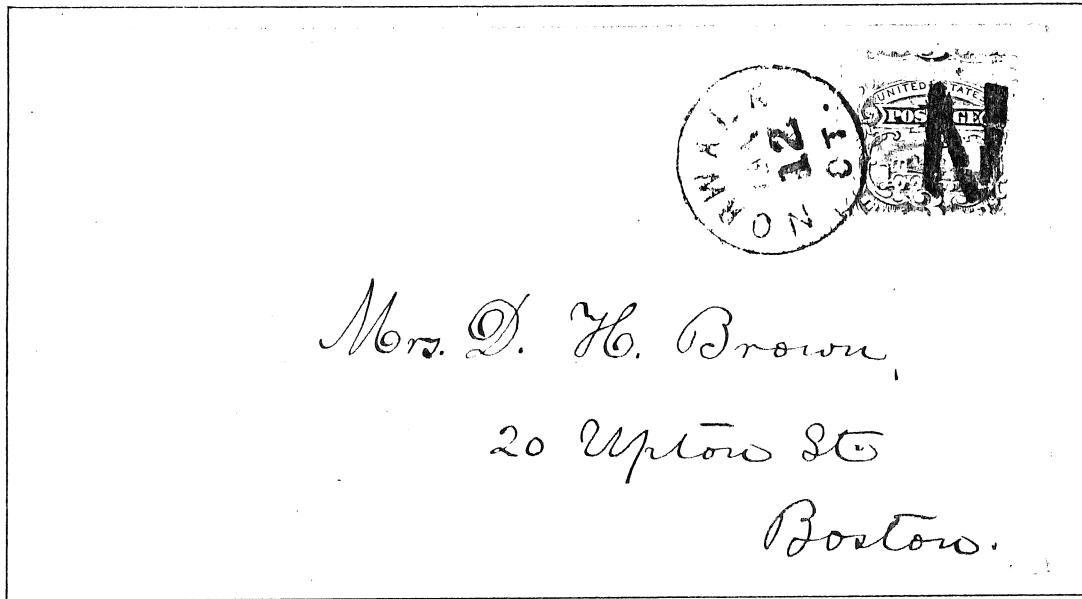
T



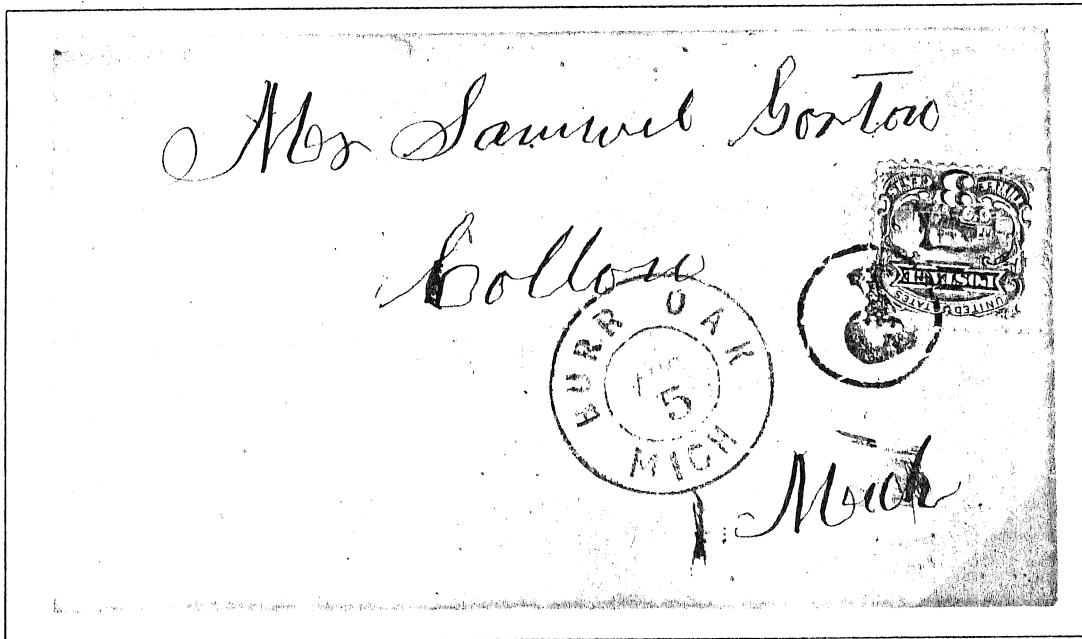
O



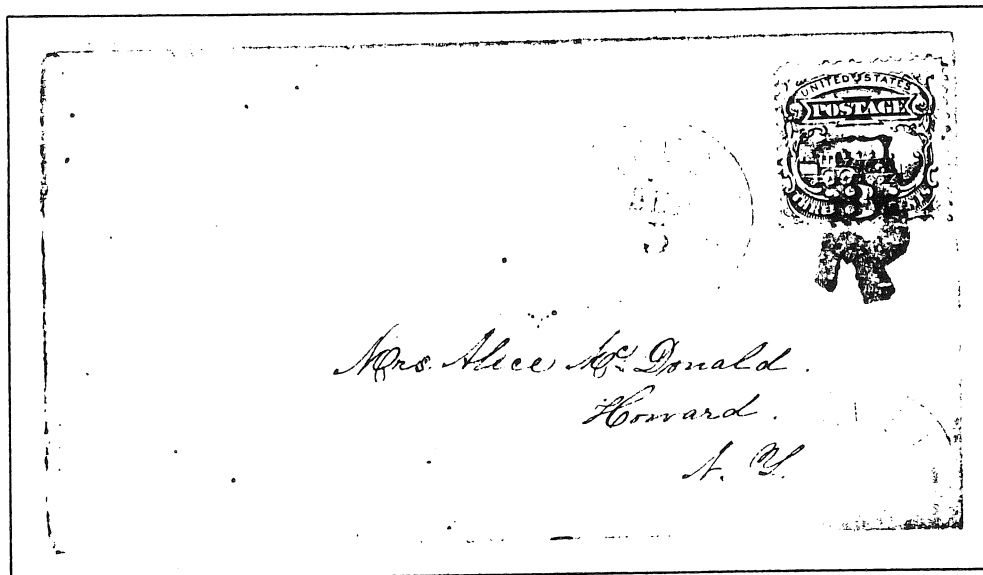
E



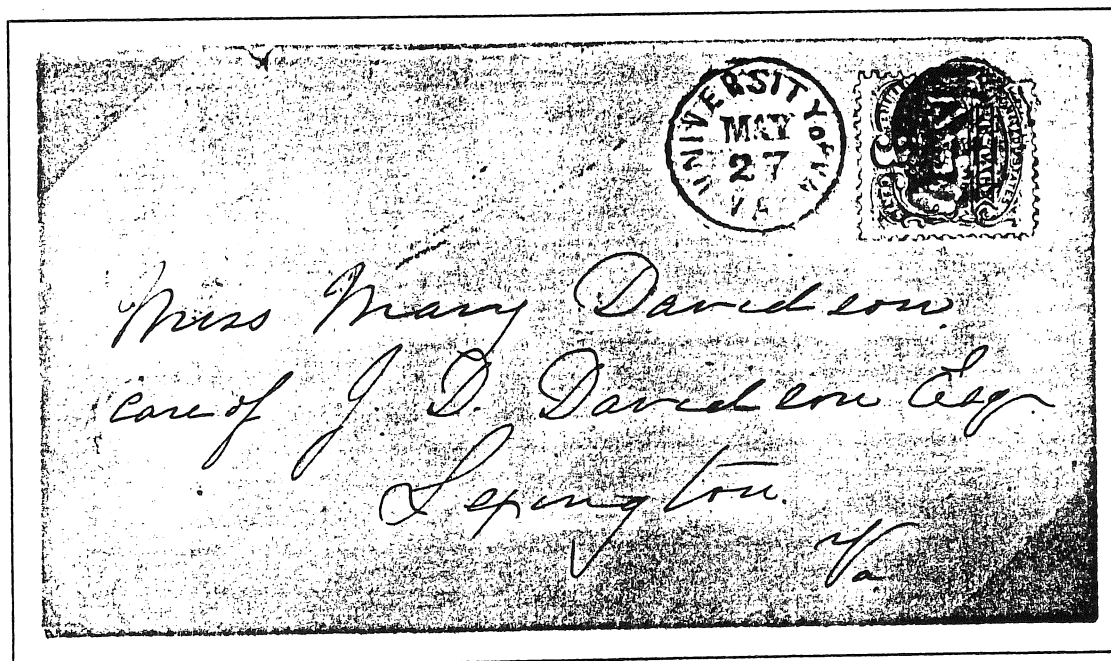
NORWALK, CONNECTICUT "N"



P

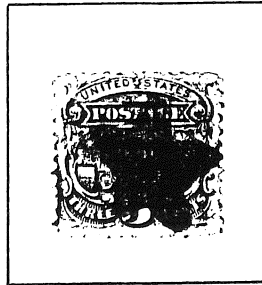


ROCHESTER, NEW YORK "R"

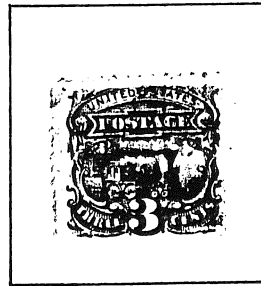


NEGATIVE "UV"
UNIVERSITY OF VIRGINIA

STAR CANCELS



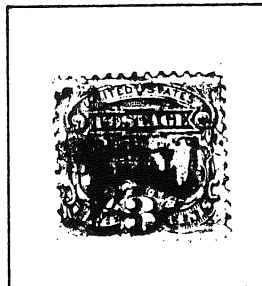
BLUE



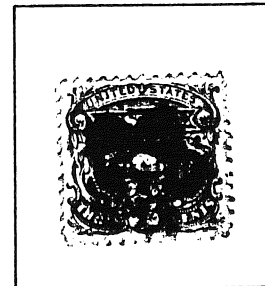
PURPLE



BLACK STAR
IN CIRCLE



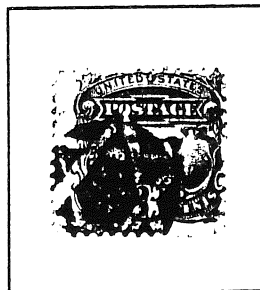
ORANGE STAR
IN CIRCLE



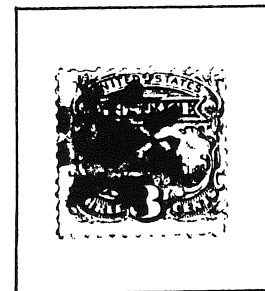
BLUE OPEN
CENTER



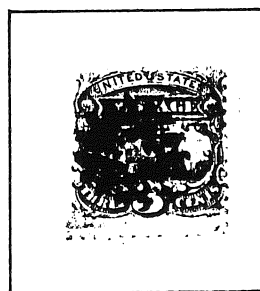
FIVE POINT



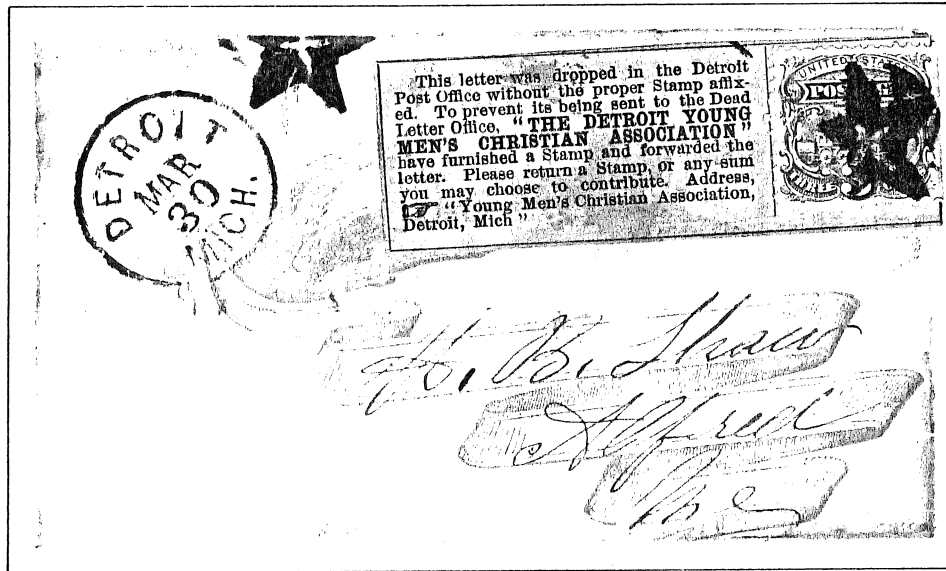
SIX POINT
STAR OF DAVID



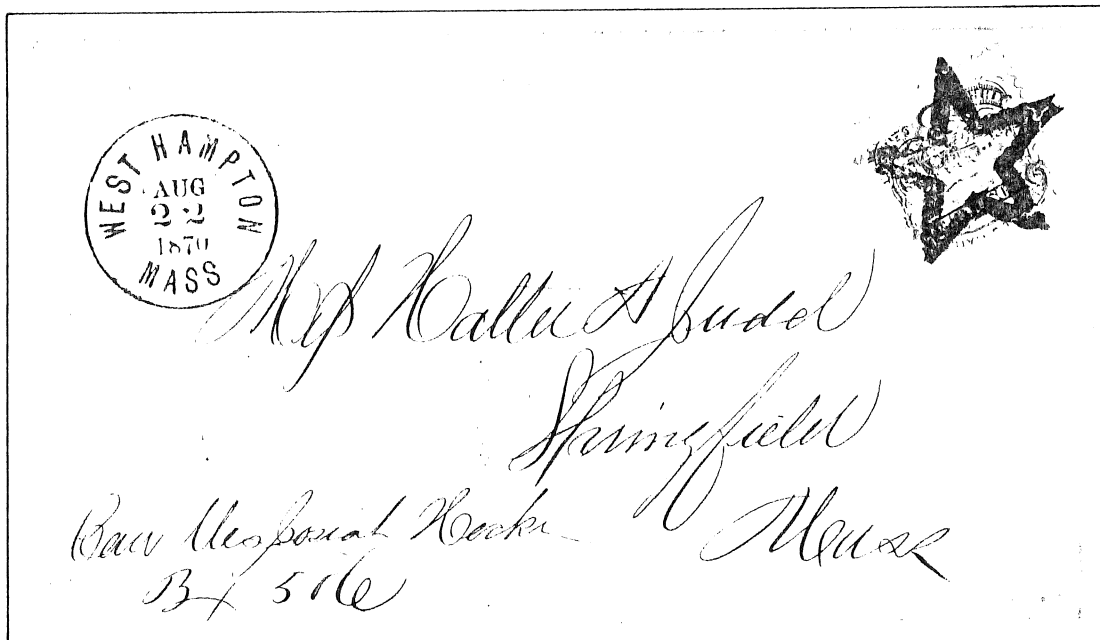
EIGHT POINT



MULTI-POINT

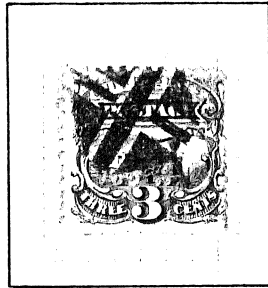


STAR - DETROIT, MICHIGAN. LABEL WITH STAMP APPLIED BY YMCA TO PAY DOMESTIC POSTAGE.

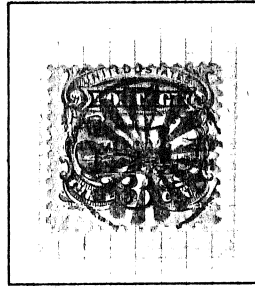


STAR - WEST HAMPTON, MASSACHUSETTS

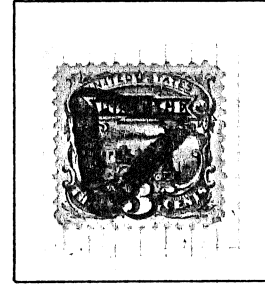
FANCY CANCELS



GEOMETRIC



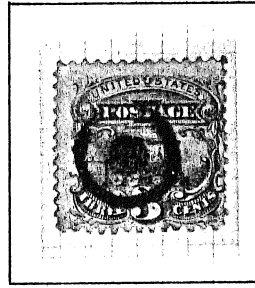
WHEEL



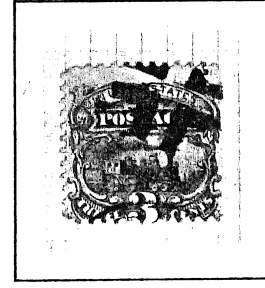
TRIANGLE



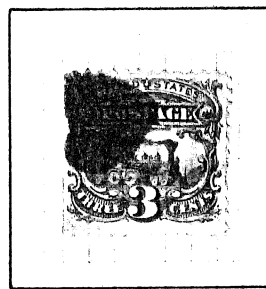
FLOWER



BULLS-EYE



CROSSROADS



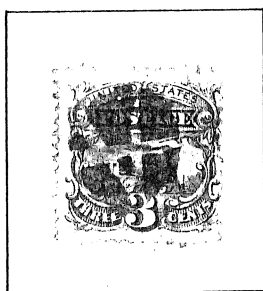
HEART



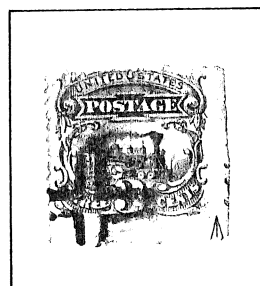
FAN



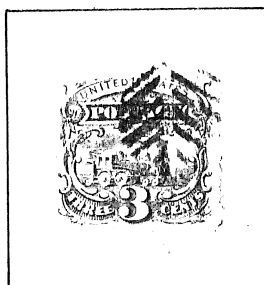
LEAF



MASONIC



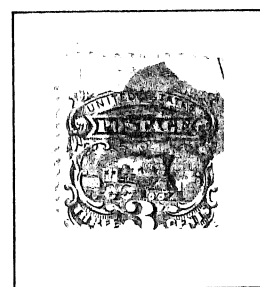
CROSS



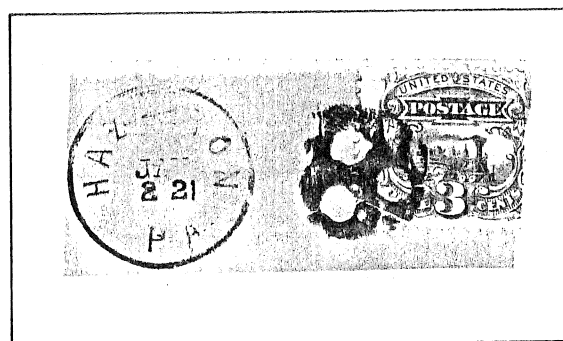
FISH BONES



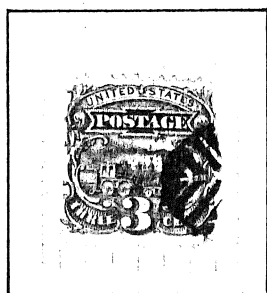
GEOMETRIC



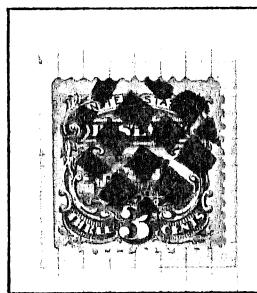
AXE HEAD



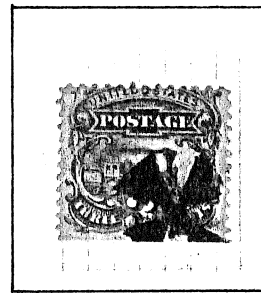
SPONGE



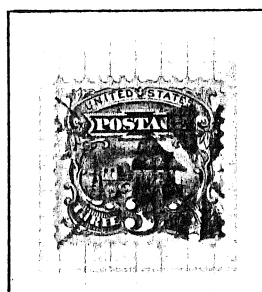
NEGATIVE LEAF



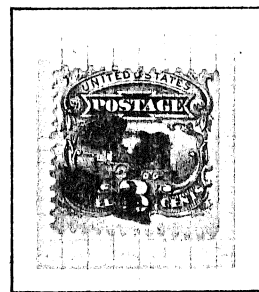
WAFFLE



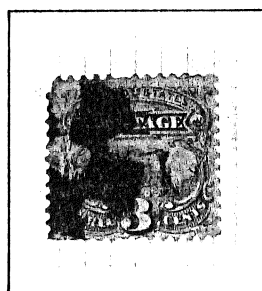
MALTESE CROSS



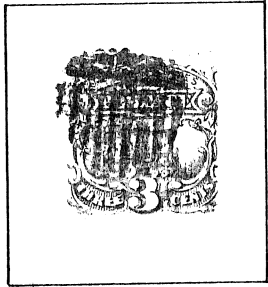
CIRCLE OF WEDGES



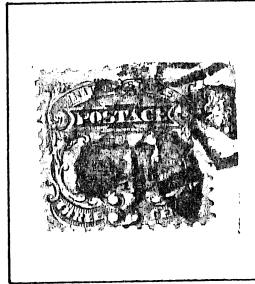
SQUARE OF SQUARES



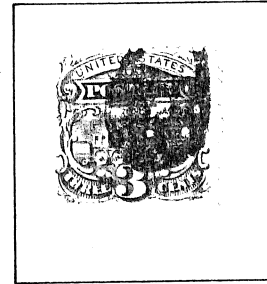
NEW YORK FOREIGN MAIL



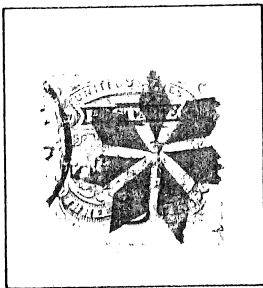
SHIELD
THOMASTON, MAINE



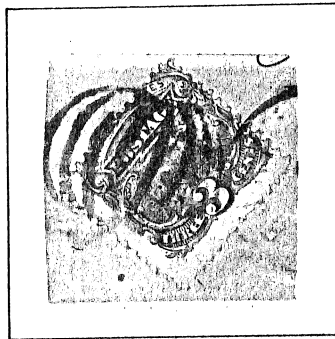
BEE
ADRIAN, MICHIGAN



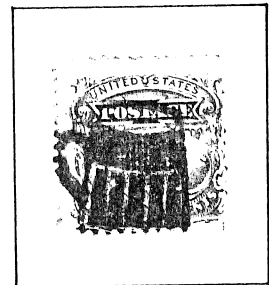
PADLOCK
WEST MERIDEN, CT.



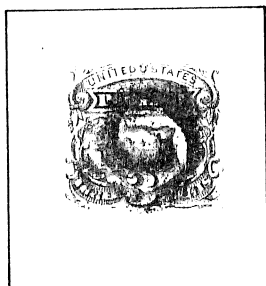
ROSETTE
WATERBURY, CT.



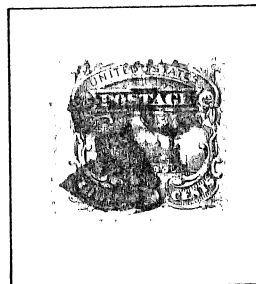
PUMPKIN
WATERBURY, CT.



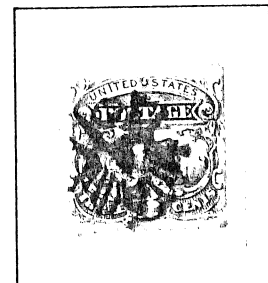
BEER MUG
WATERBURY, CT.



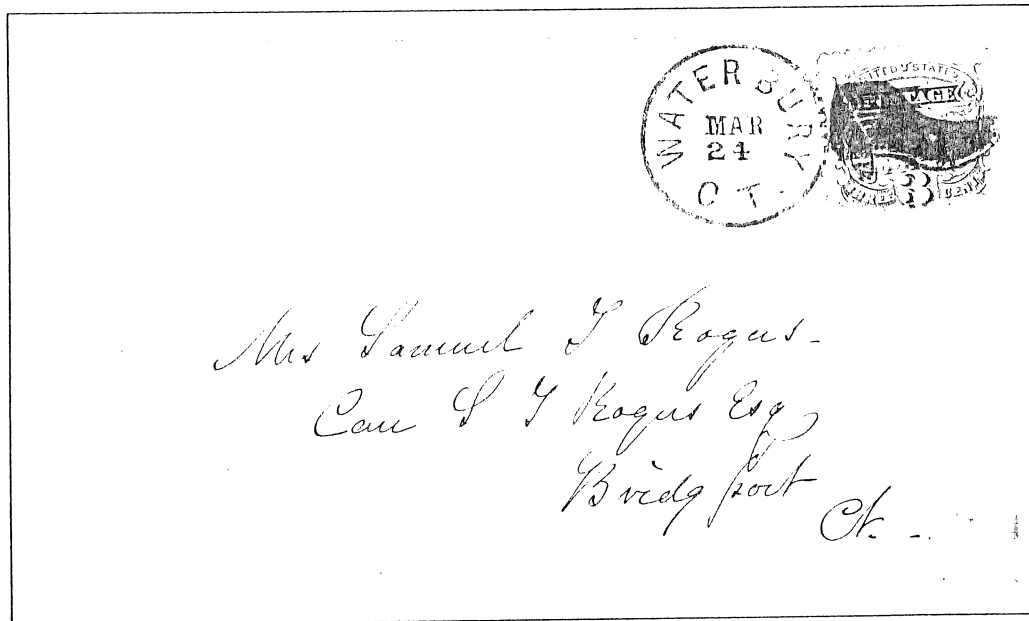
SPIRAL
CASNOVIA, N.Y.



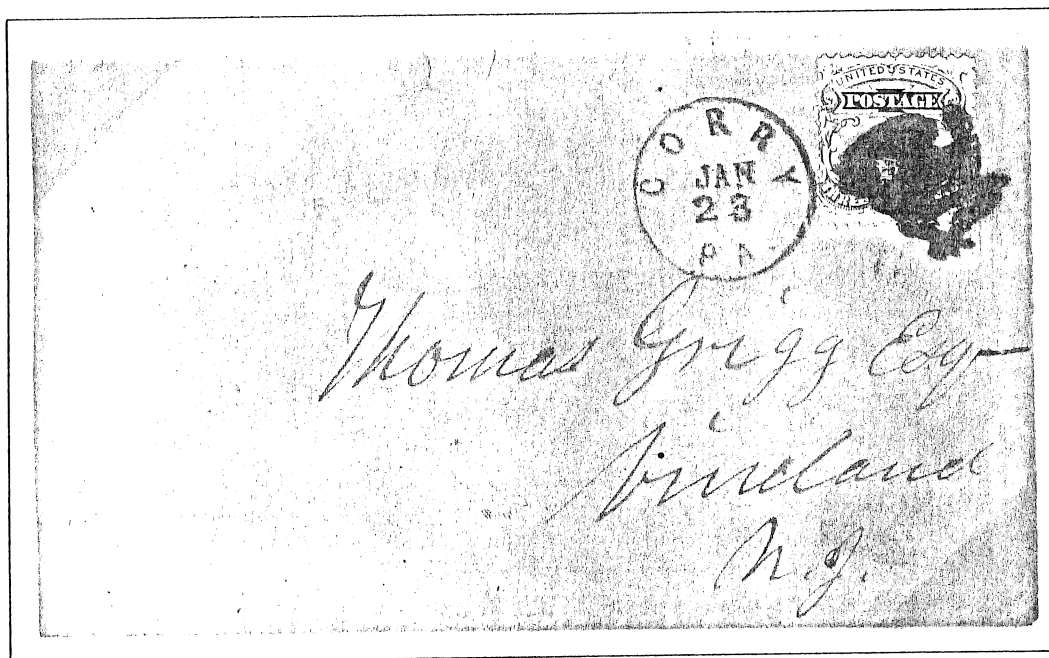
WOMAN IN HEADDRESS
CORRY, PA.



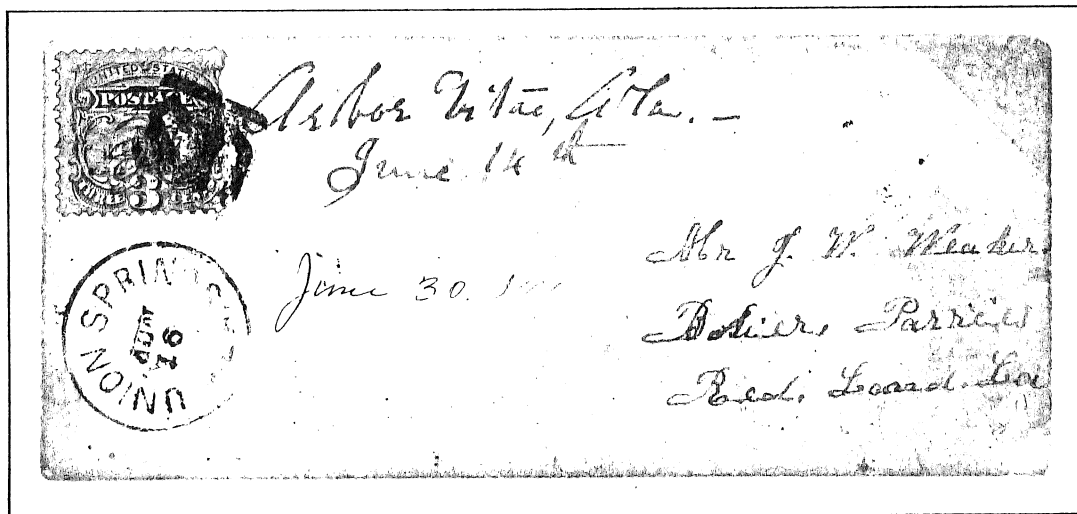
BLUE FLY
MOUNT VERNON, OHIO



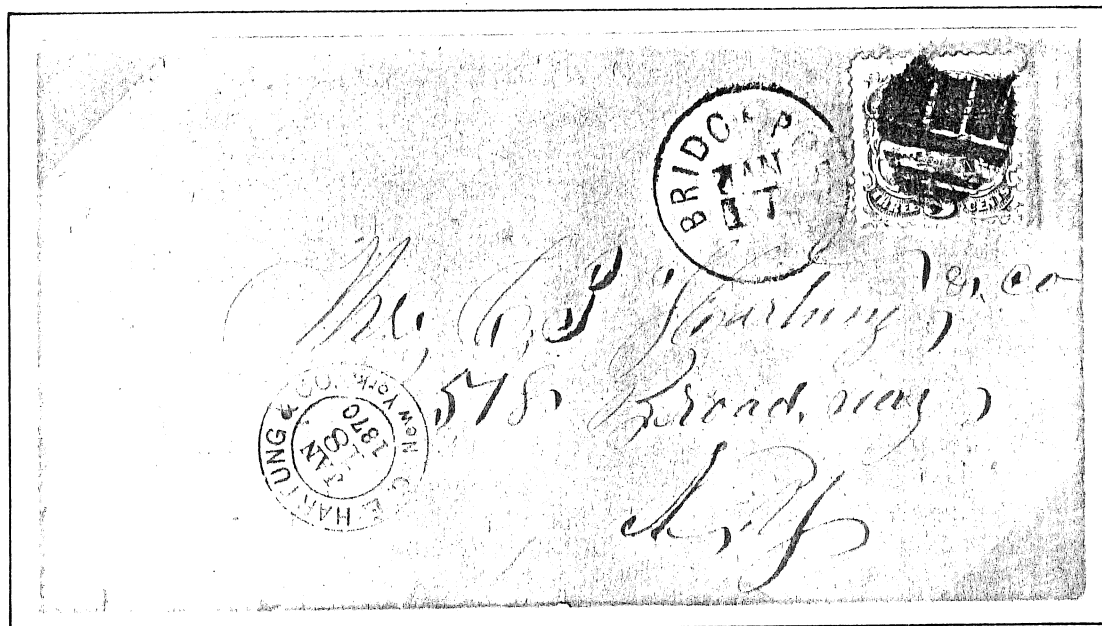
BUTTONLESS SHOE - WATERBURY, CONNECTICUT



EAGLE - CORRY, PENNSYLVANIA



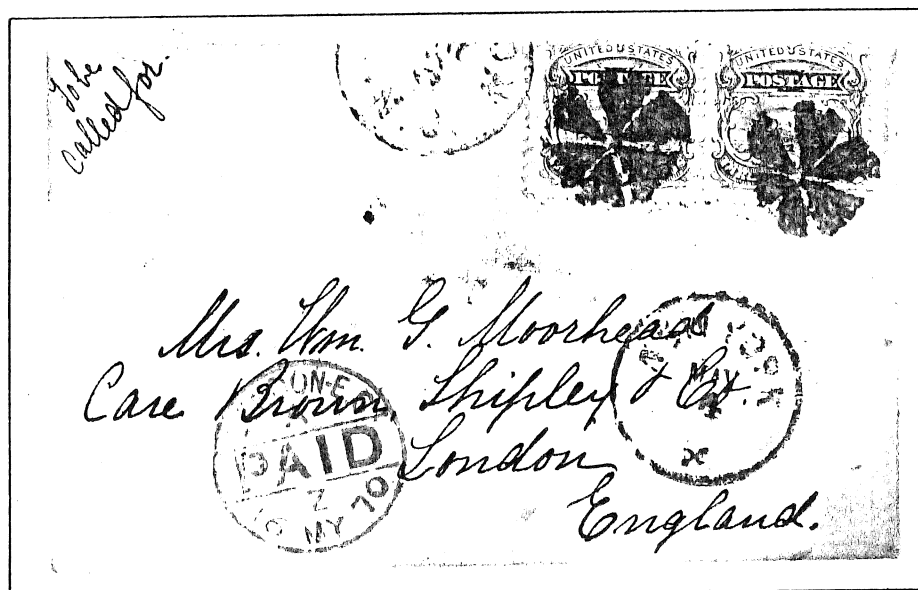
U.S. - UNION SPRINGS, ALABAMA •



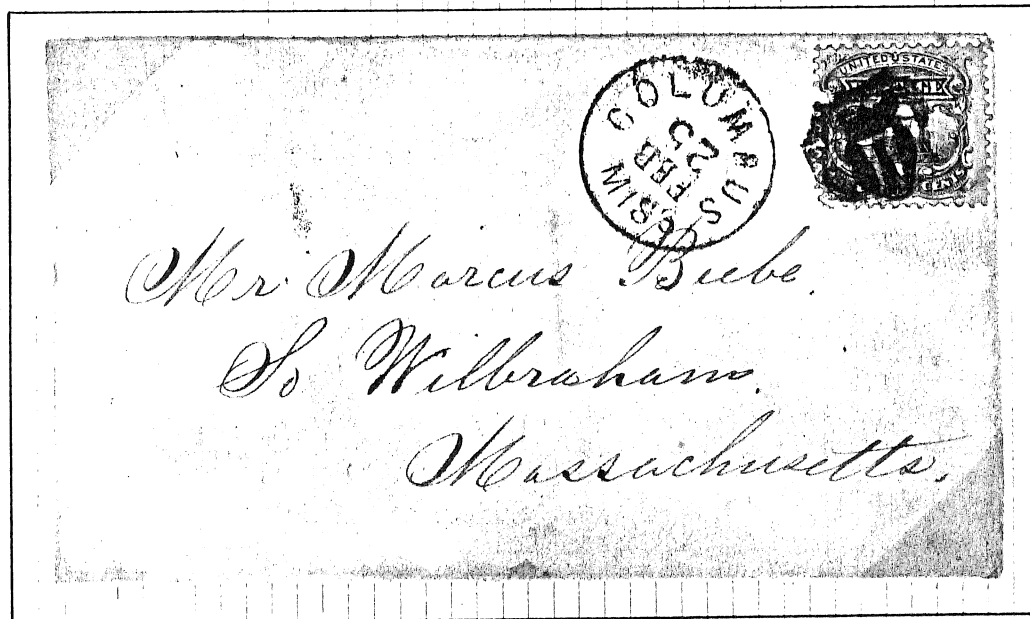
SHIELD - BRIDGEPORT, CONNECTICUT



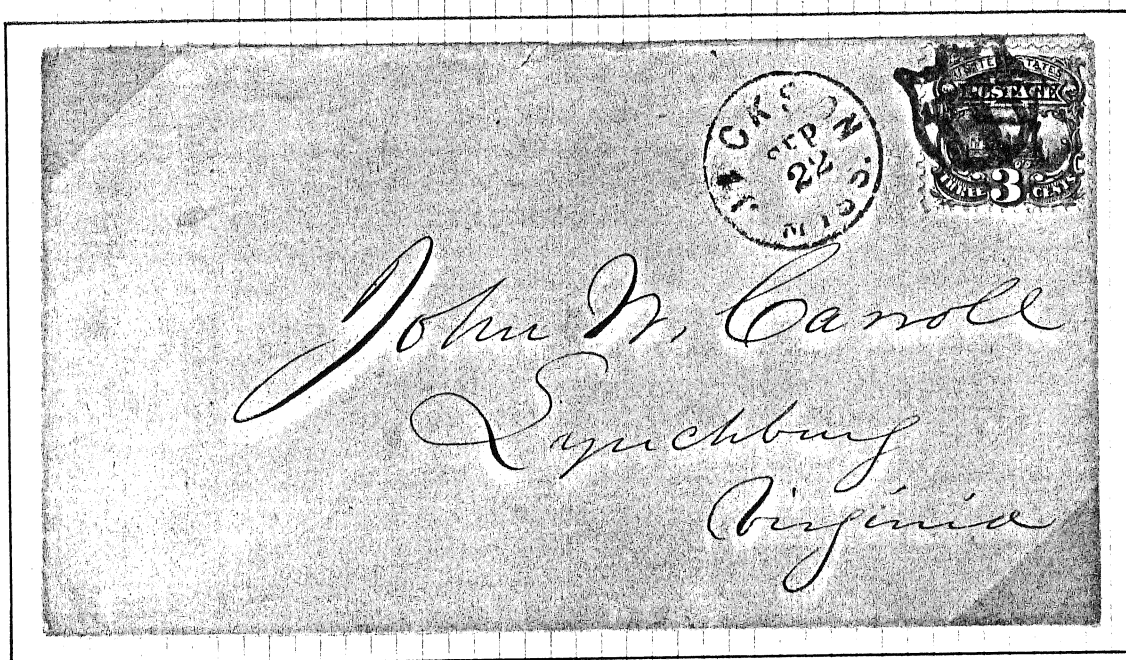
FLOWER - PRAIRIE LEA, TEXAS



RED FLOWER - KINSTON, NORTH CAROLINA



SHIELD - COLUMBUS, MISSISSIPPI



SHIELD - JACKSON, MISSISSIPPI