

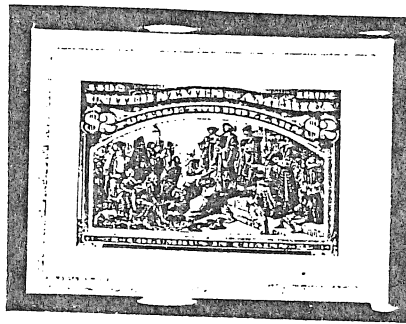
LARGE DIE PROOF

HYBRID

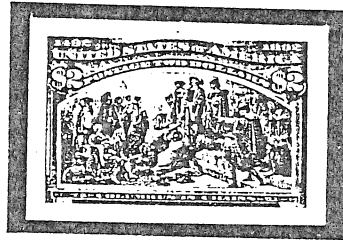


BROWN RED ON INDIA - BLOCK SUNK ON INDIA ON CARD

SMALL DIE PROOFS

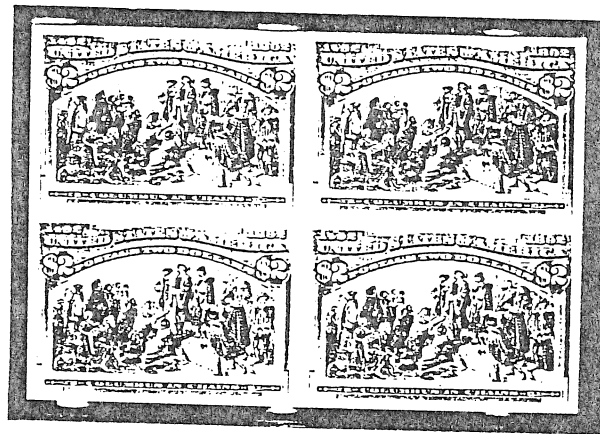


CLARET BROWN ON WHITE WOVE ON GRAY CARD - 1903 'ROOSEVELT'

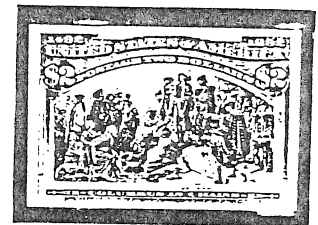


BROWN RED ON YELLOWISH WOVE - 1915 'PANAMA-PACIFIC'

PLATE PROOFS

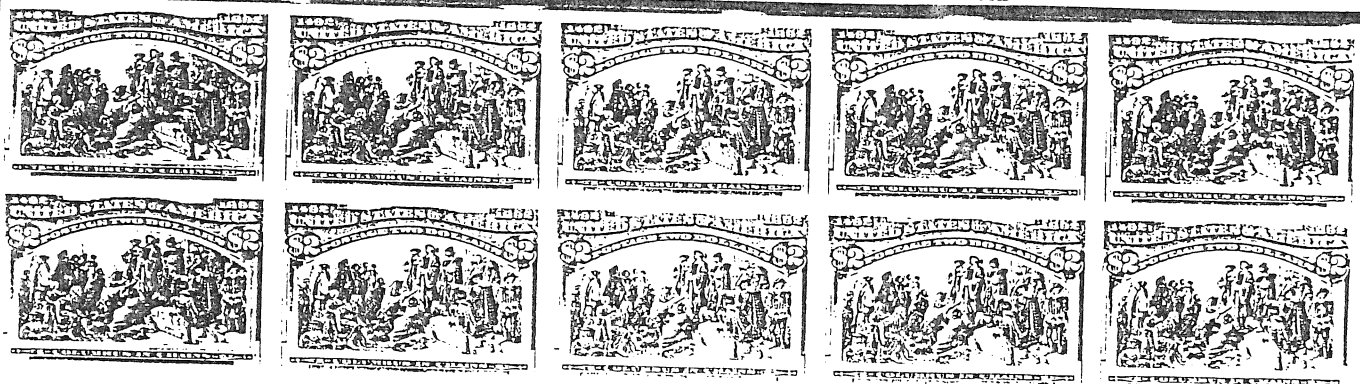


ON INDIA



ON CARD

BROWN RED ON INDIA ON CARD



No. 105

AMERICAN BANK NOTE COMPANY.

AA

LOWER RIGHT IMPRINT AND PLATE NUMBER BLOCK OF TEN

THE \$2 COLUMBIAN EXPOSITION STAMP

'SPECIMEN STAMP'



HANDSTAMPED IN BLACK

THE STAMP



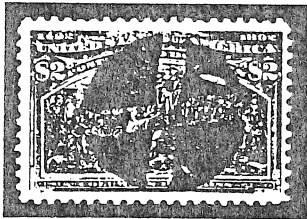
BROWN RED ON WOVE



A BOTTOM CENTER IMPRINT AND PLATE NUMBER BLOCK OF EIGHT

THE \$2 COLUMBIAN EXPOSITION STAMP

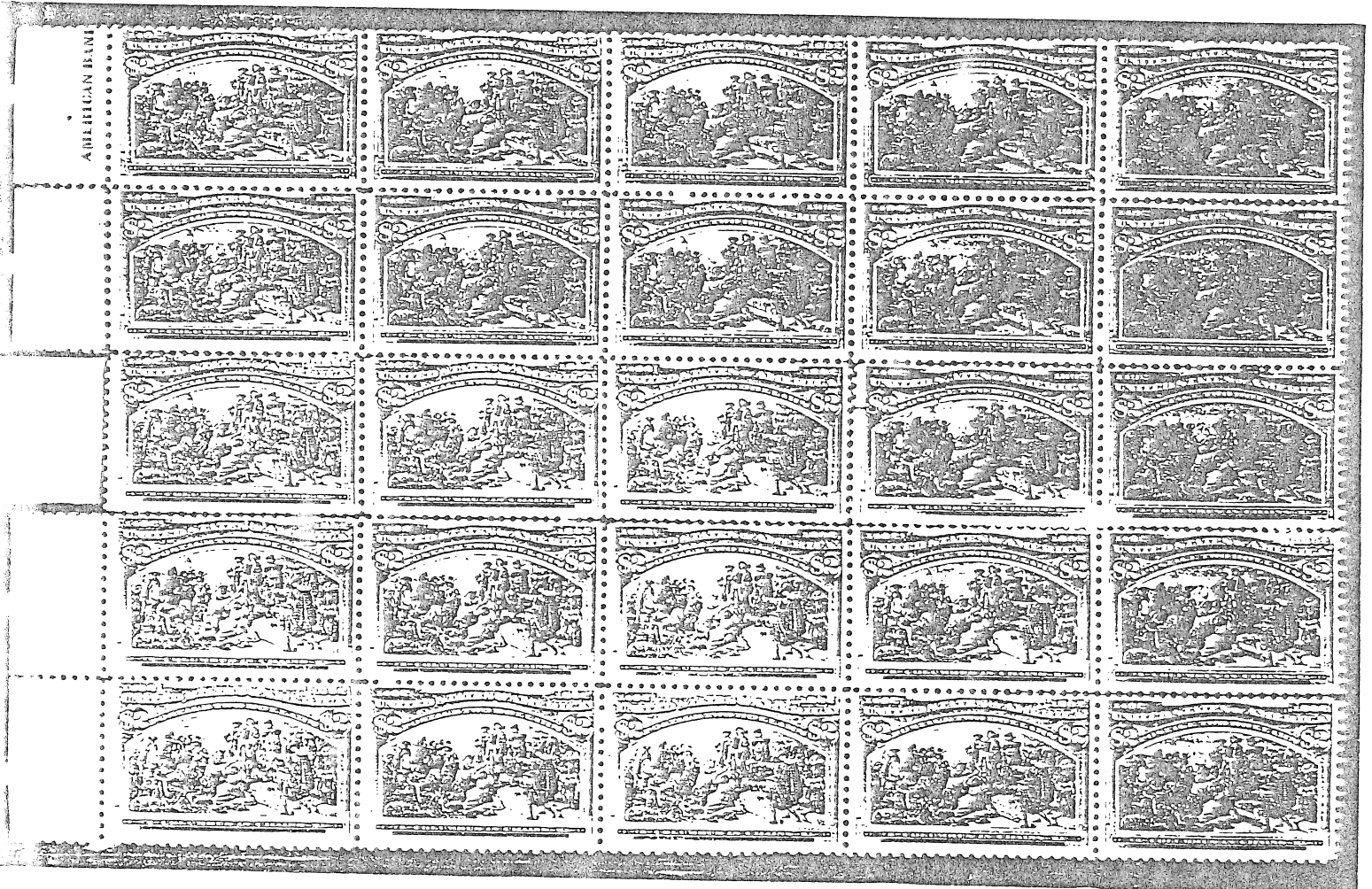
COUNTERFEIT



AN EASILY DETECTED COUNTERFEIT OF THE \$2 VALUE, PRODUCED BY ADOLF KRUEGER OF HANOVER, GERMANY. KRUEGER ADVERTISED FULL SETS OF COLUMBIANS FOR SALE IN EUROPEAN STAMP PUBLICATIONS, ALMOST ALWAYS OVERPRINTED 'IMITATION'. HOWEVER, SOME WERE NOT OVERPRINTED, BUT, RATHER, HAD FAKE CORK CANCELLATIONS APPLIED, AS IS THE CASE HERE. THE PAPER DIFFERS SUBSTANTIALLY FROM THAT UPON WHICH THE GENUINE STAMPS ARE PRINTED.

United States
COLUMBIAN EXPOSITION ISSUE OF 1893

THE \$2 COLUMBIAN EXPOSITION STAMP

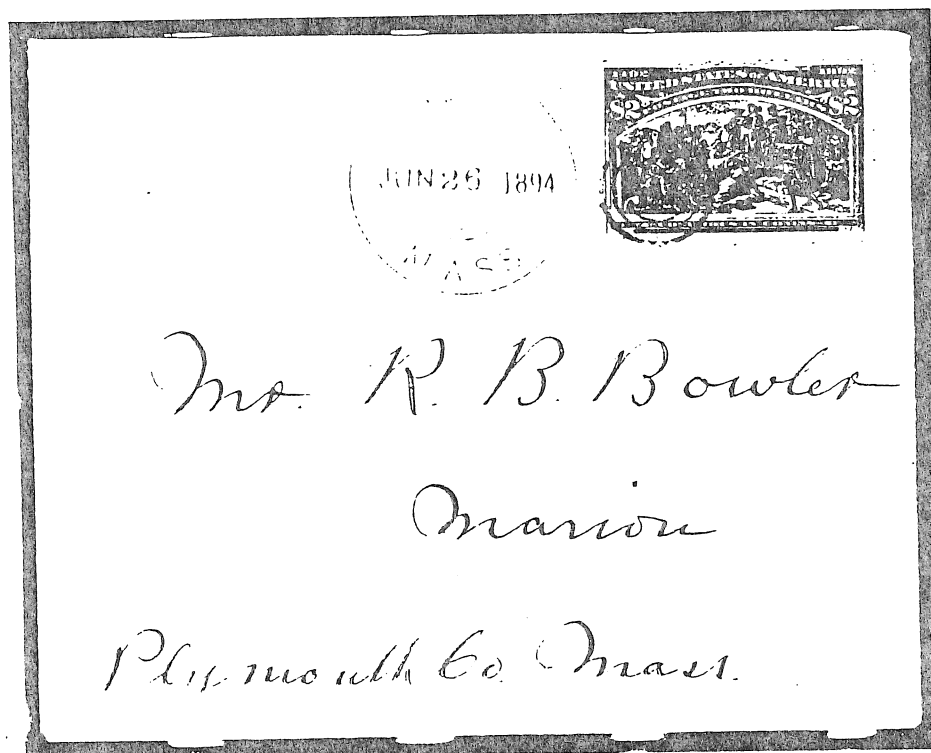


THE LARGEST KNOWN MULTIPLE OF THIS DENOMINATION.

POSTAL USAGE
OF THE \$2 COLUMBIAN EXPOSITION STAMP
TO DOMESTIC DESTINATIONS

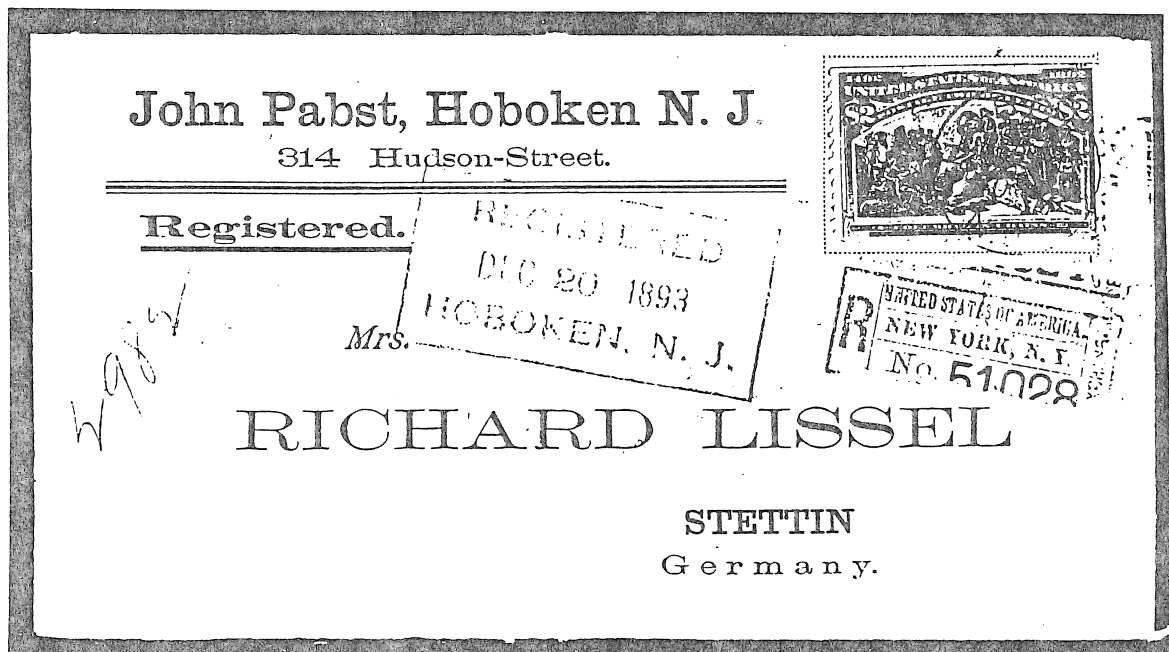


WORLD'S FAIR STATION CANCELLATION
ON THE RARE MORO CACHETED COVER.

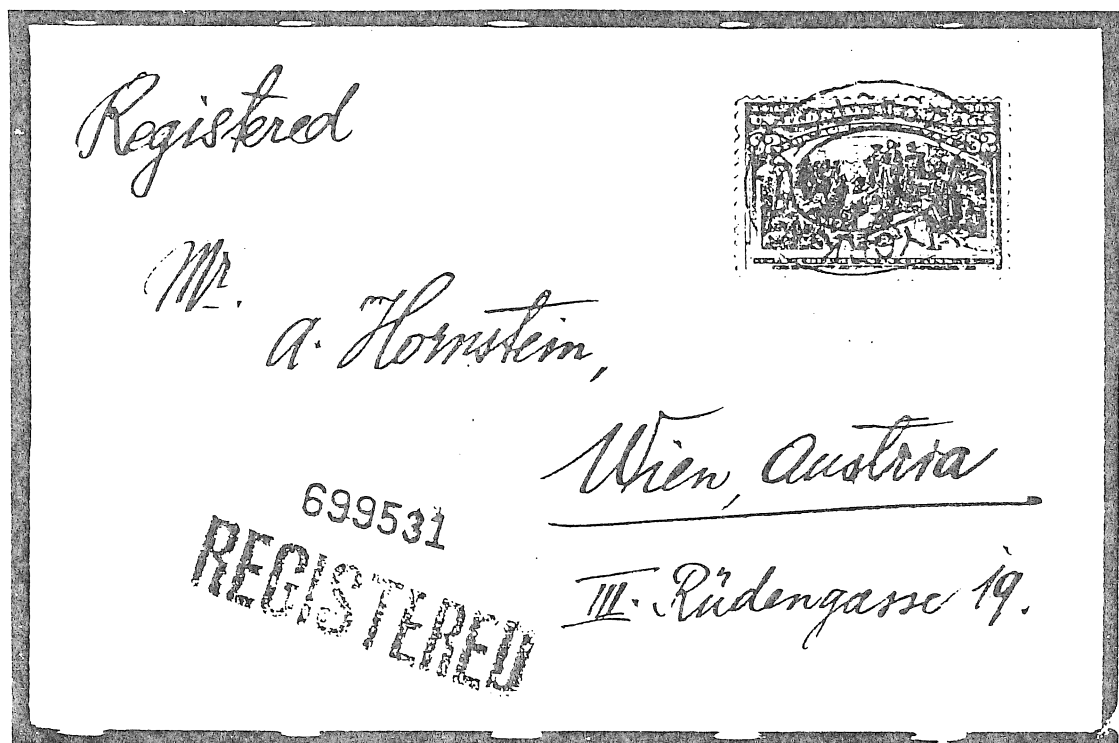


TO THE HOME ADDRESS OF THE COMPTROLLER OF THE CURRENCY.
AN OBVIOUS OVERPAYMENT OF THE FIRST CLASS LETTER RATE.

POSTAL USAGE
OF THE \$2 COLUMBIAN EXPOSITION STAMP
FOR FOREIGN REGISTRY PURPOSES



WITH THE BACKSTAMP OF THE NEW YORK STATE COMMISSIONER OF DEEDS,
NEW JERSEY TO GERMANY.



WITH NEW YORK FOREIGN AND REGISTRY BACKSTAMPS,
NEW YORK TO AUSTRIA.

THE \$3 COLUMBIAN EXPOSITION STAMP

DERIVATION OF THE DESIGN



THE MUSEUM AT VALLADOLID, SPAIN HOUSES THE PAINTING
BY FRANCISCO JOVER, 'CHRISTOPHER COLUMBUS BEFORE KING
FERDINAND', . IN THIS DENOMINATION, IT IS LABELLED
'COLUMBUS DESCRIBING THIRD VOYAGE'.

THE \$3 COLUMBIAN EXPOSITION STAMP

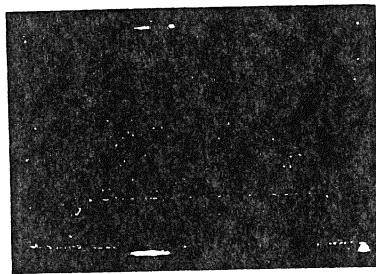
DERIVATION OF THE DESIGN



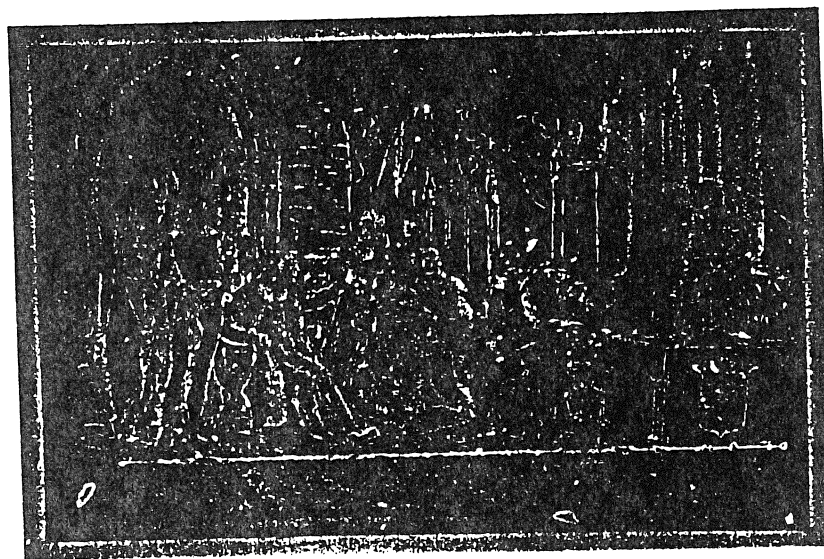
THE MUSEUM AT VALLADOLID, SPAIN HOUSES THE PAINTING
BY FRANCISCO JOVER, 'CHRISTOPHER COLUMBUS BEFORE KING
FERDINAND', . IN THIS DENOMINATION, IT IS LABELLED
'COLUMBUS DESCRIBING THIRD VOYAGE'.

THE \$3 COLUMBIAN EXPOSITION STAMP

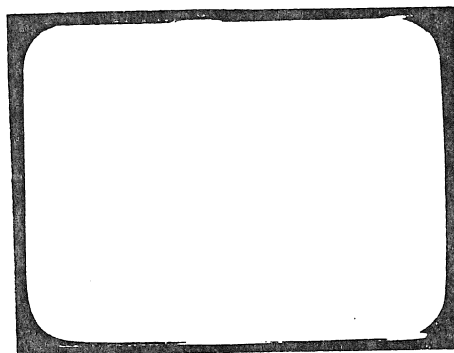
FERROTYPE PLATE



PHOTOSENSITIVE PLATE WITH REVERSE IMAGE IN STAMP SIZE.



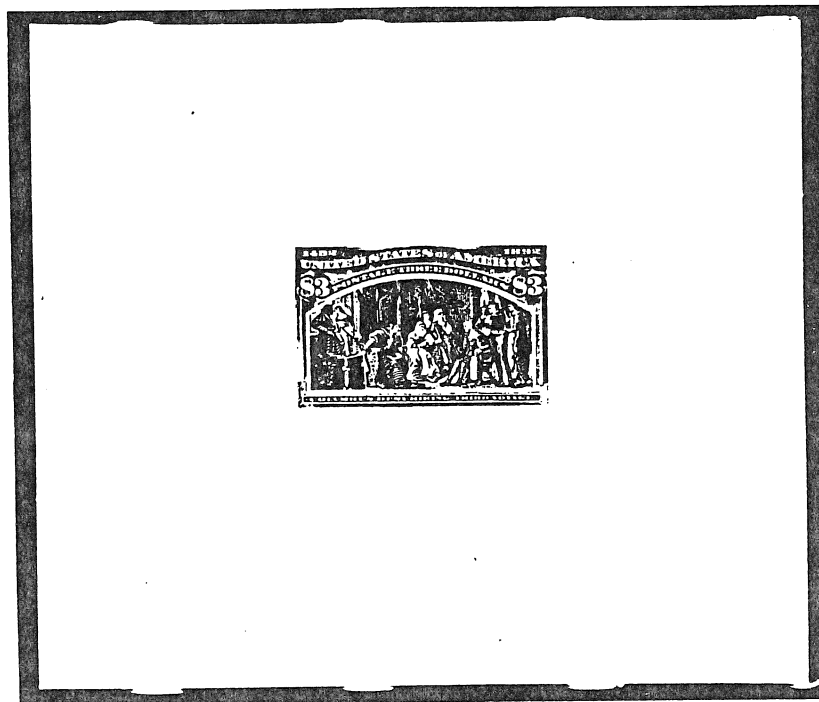
HAND-DRAWN RAISED RED INK LINES AID IN TRANSFER TO DIE.



WHITE CARDBOARD INTO WHICH PLATE WAS PRESSED,
THEN FILLED WITH RED INK.

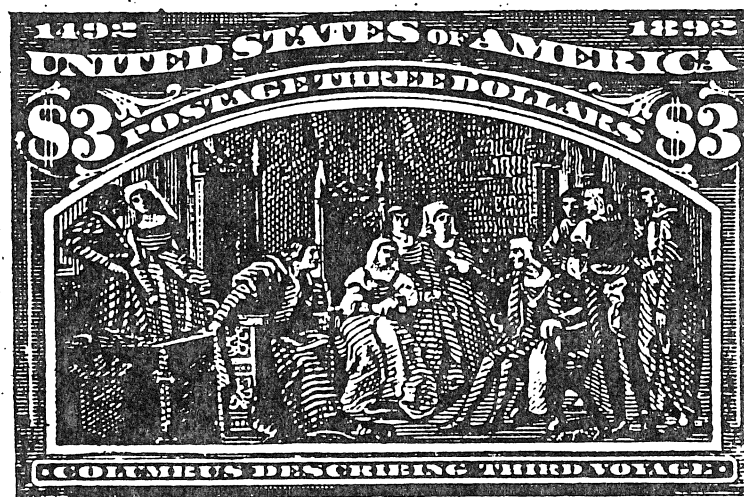
ENGRAVER'S PROGRESSIVE DIE PROOF

FIRST STATE OF THE DIE



YELLOW GREEN ON INDIA - DIE SUNK ON CARD

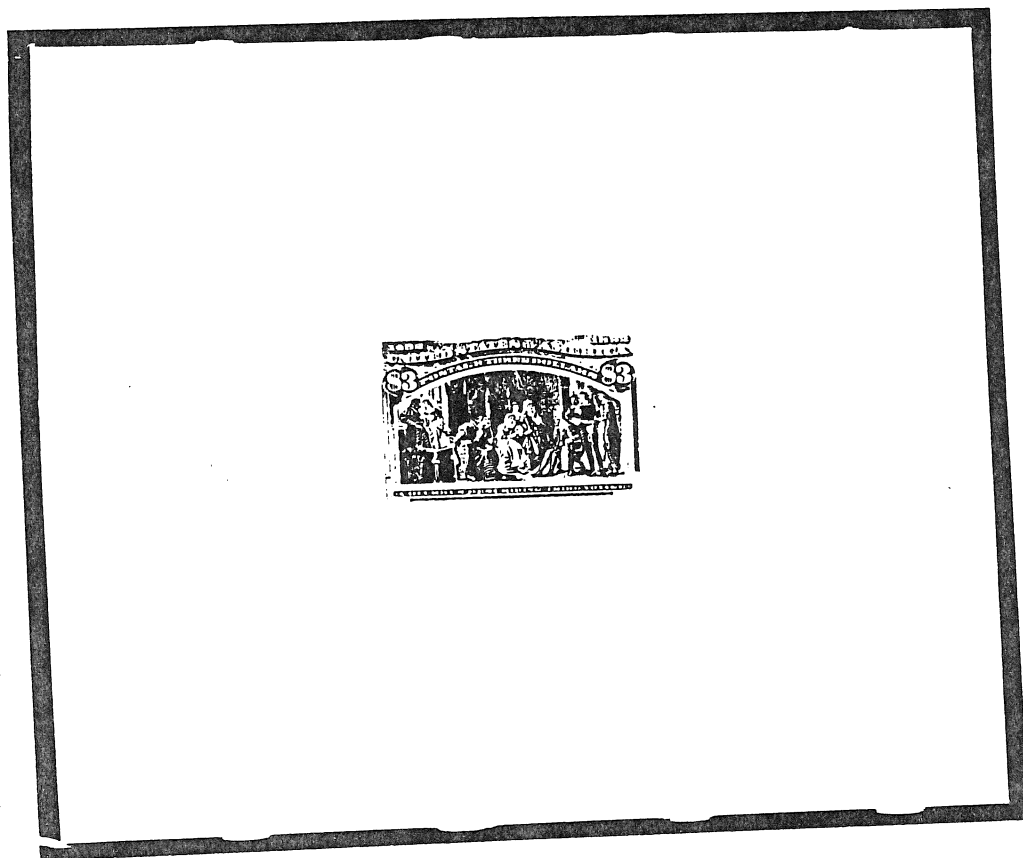
- SOME DESIGN ELEMENTS NOT COMPLETELY ENGRAVED.
- PENCIL MODELLING IN FRAME AT TOP, SIDES AND BOTTOM.



ENLARGED 300%

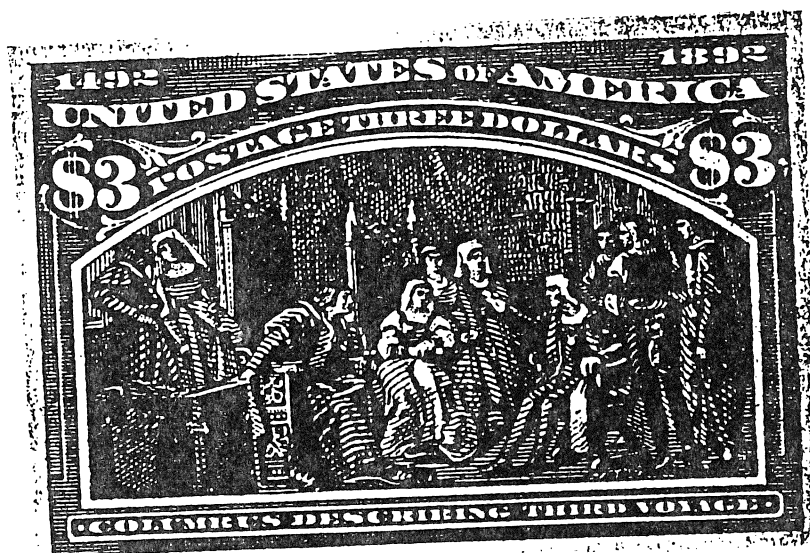
ENGRAVER'S PROGRESSIVE DIE PROOF

SECOND STATE OF THE DIE



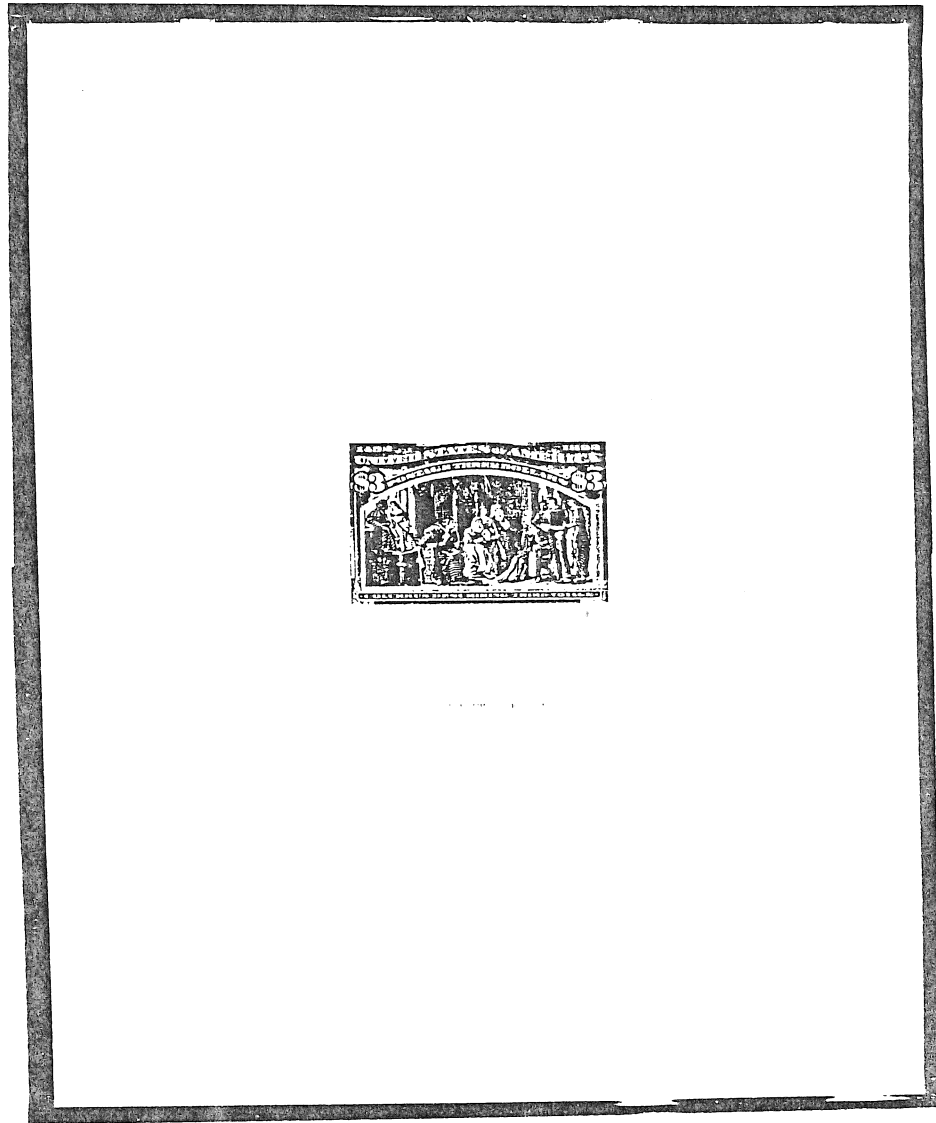
BROWN, RED ON INDIA - DIE SUNK ON CARD

- DIAGONAL LINES ADDED TO THRONE BACK UPHOLSTERY.
- MORE ENGRAVING IN FACE OF MAN STANDING AT WINDOW AT LEFT, AS WELL AS FACES OF CENTRAL FIGURES.
- CHAIRBACKS AND SOME CLOTHING ACID ETCHED.

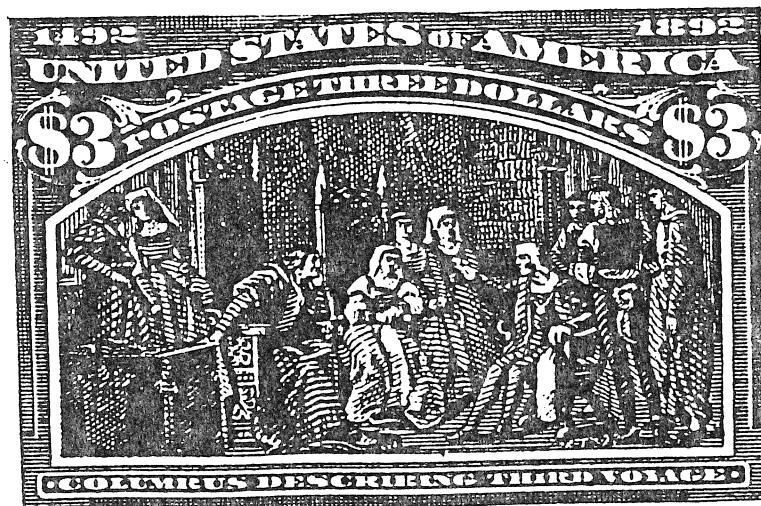


United States
COLUMBIAN EXPOSITION ISSUE OF 1893

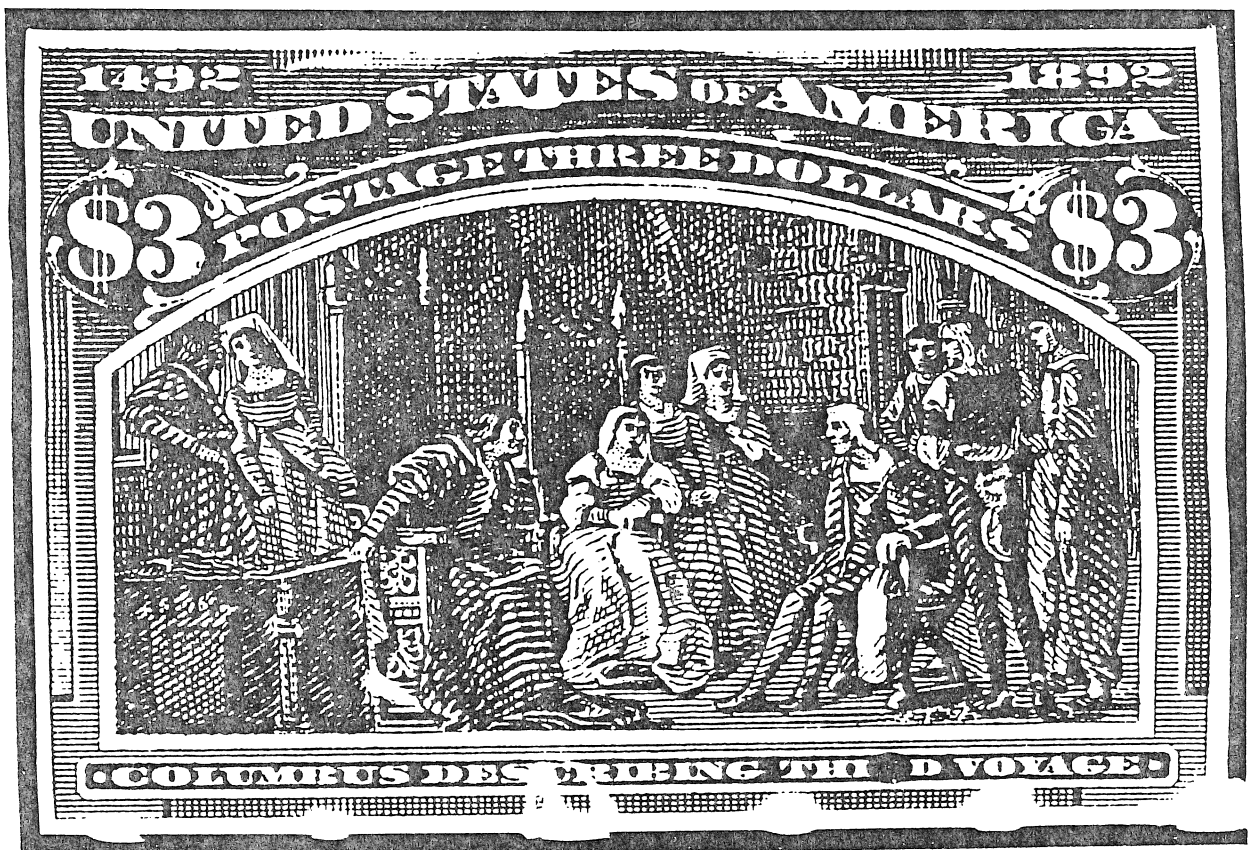
LARGE DIE PROOF



YELLOW GREEN ON INDIA - DIE SUNK ON CARD



THE \$3 COLUMBIAN EXPOSITION STAMP



DETAIL OF COMPLETED STAMP DESIGN

LARGE DIE PROOF



AMERICAN BANK NOTE CO. NEW YORK

YELLOW GREEN PRINTED DIRECTLY ON CARD

LARGE DIE PROOF



YELLOW GREEN - INDIA DIE SUNK ON CARD
ON 226 X 150 MILLIMETER PRESENTATION CARD

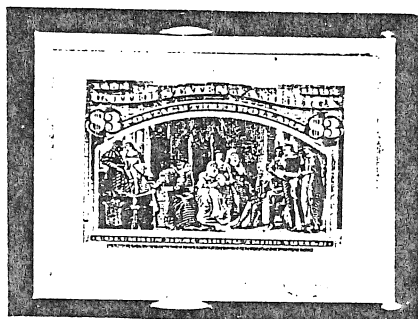
LARGE DIE PROOF

HYBRID



YELLOW GREEN PLATE PROOF ON INDIA - BLOCK SUNK ON INDIA ON CARD

SMALL DIE PROOFS



YELLOW GREEN ON WHITE WOVE ON GRAY CARD

FROM A 1902 'ROOSEVELT' ALBUM

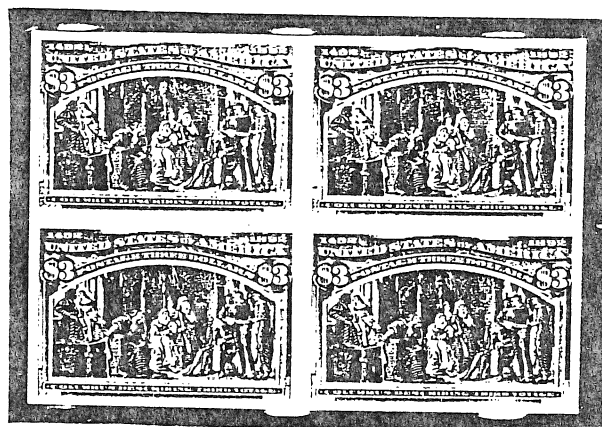


YELLOW GREEN ON YELLOWISH WOVE

A 1915 'PANAMA-PACIFIC' PROOF

PLATE PROOFS

ON INDIA



DARK YELLOW GREEN ON INDIA ON CARD

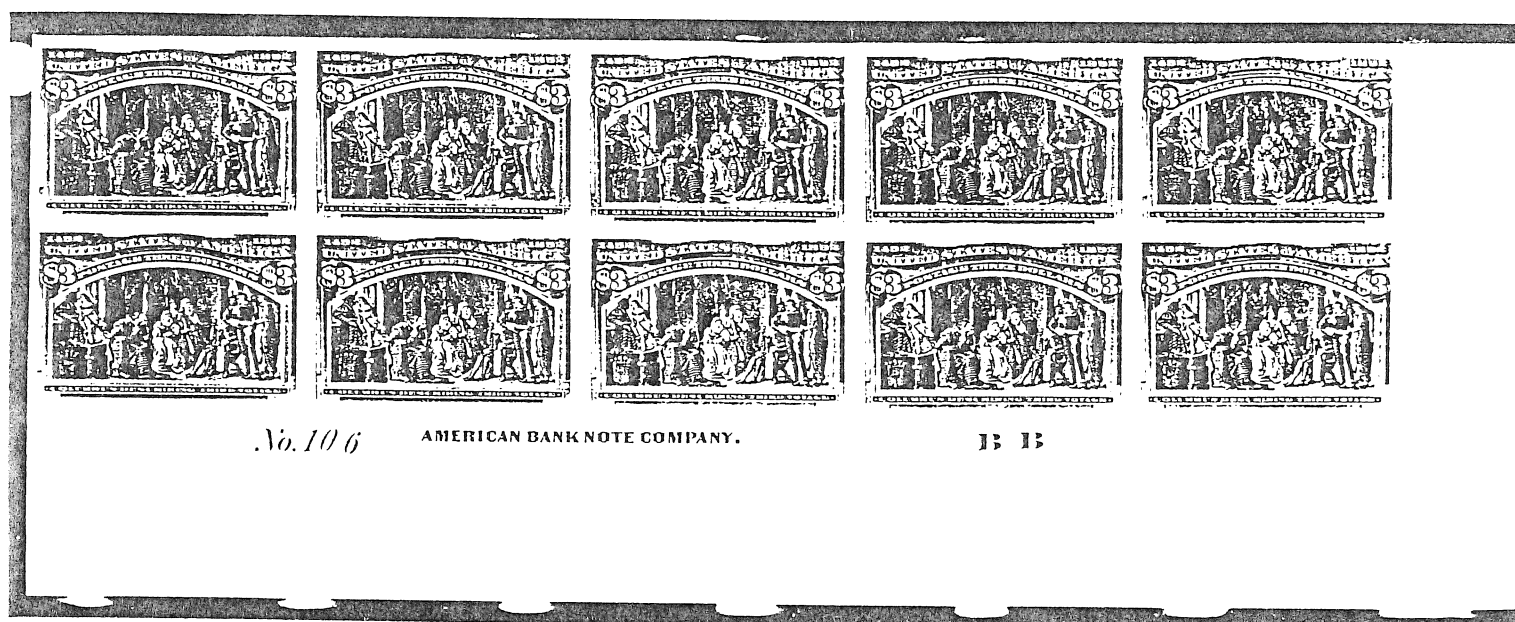


ON CARD

PLATE PROOFS



A PLATE NUMBER AND IMPRINT BOTTOM BLOCK OF EIGHT ON INDIA



A SIDEROGRAPHER'S CHECK PROOF, APPROVED BY AMERICAN
BANK NOTE COMPANY PRESIDENT JAMES MACDONOUGH
ON DECEMBER 17, 1892.



AMERICAN BANK NOTE COMPANY.

THE \$3 COLUMBIAN EXPOSITION STAMP

'SPECIMEN' STAMP

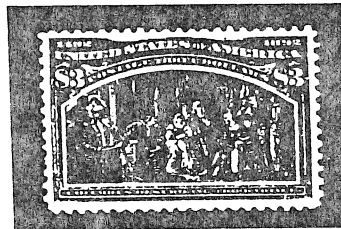


HANDSTAMPED IN DULL VIOLET

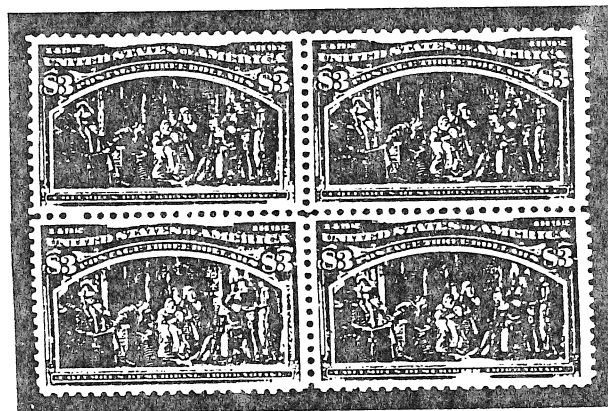
THE STAMP



YELLOW GREEN ON WOVE



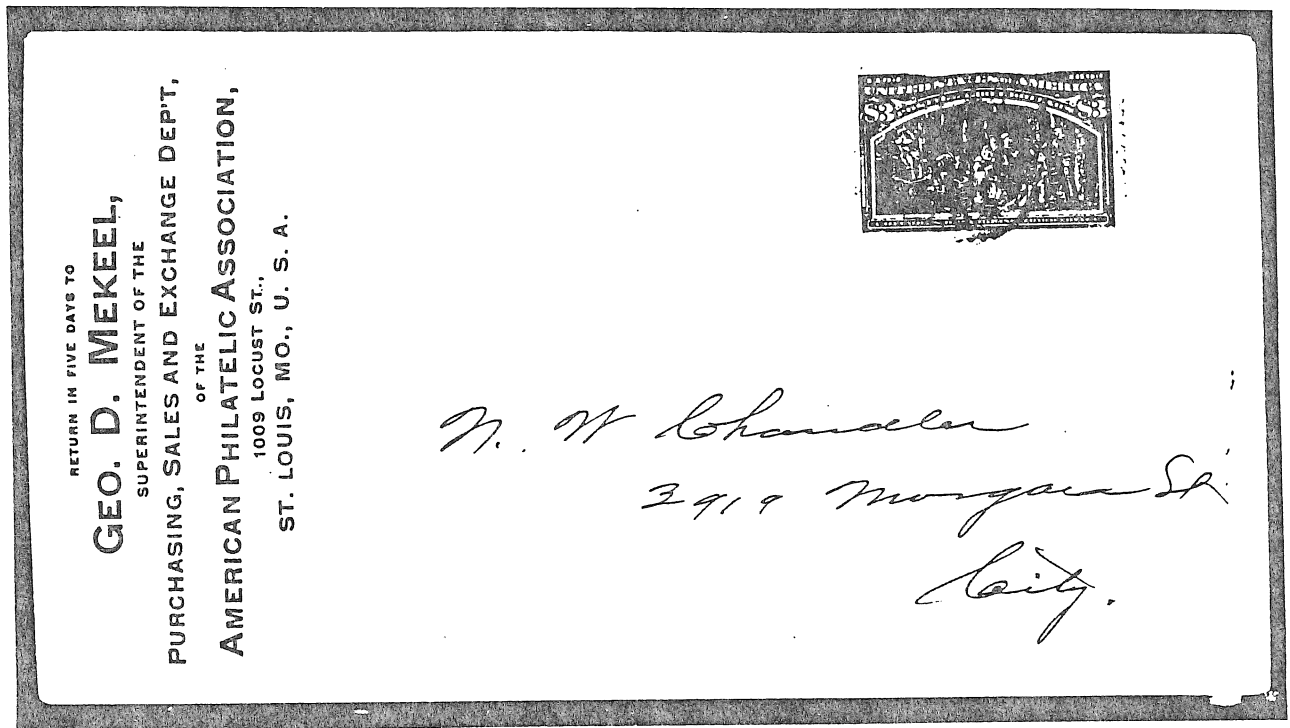
THE SEPARATELY CATALOGUED OLIVE GREEN VARIETY



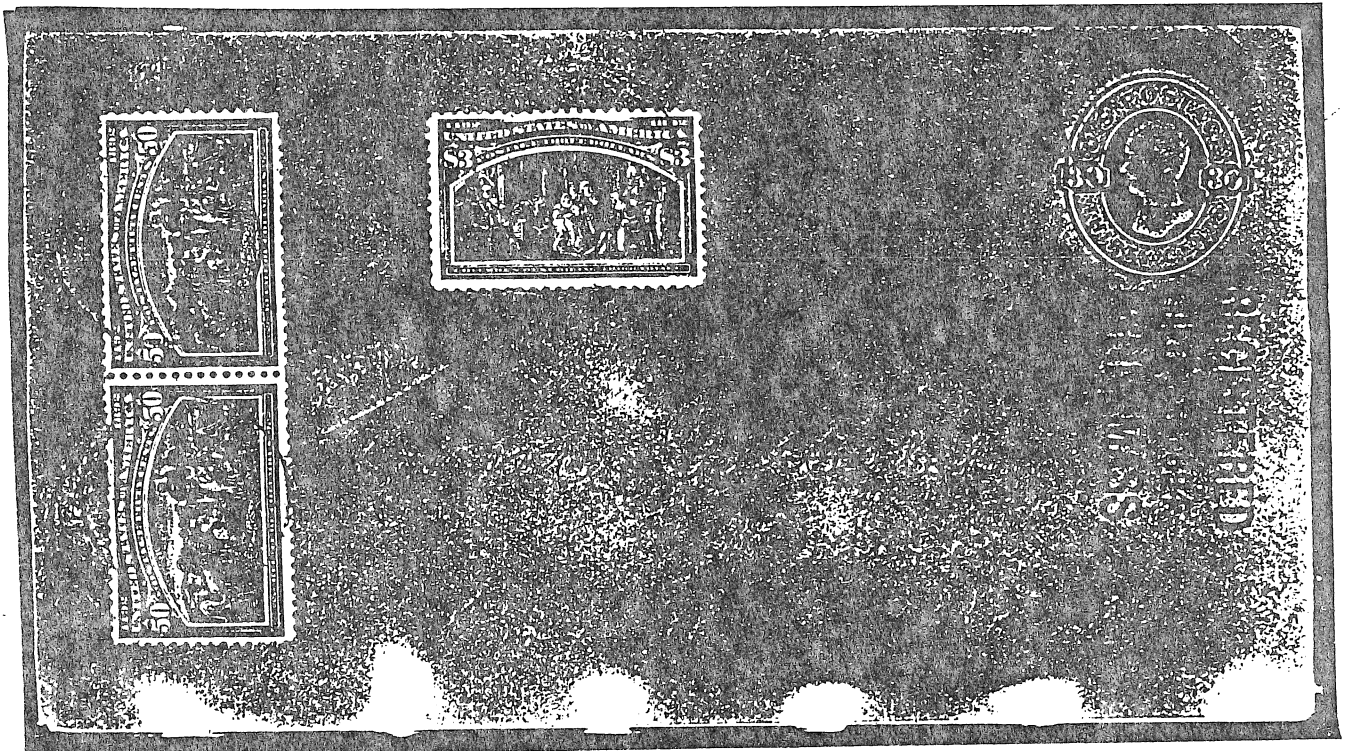
A WELL CENTERED BLOCK OF 4

POSTAL USAGE

OF THE \$3 COLUMBIAN EXPOSITION STAMP
TO DOMESTIC DESTINATIONS



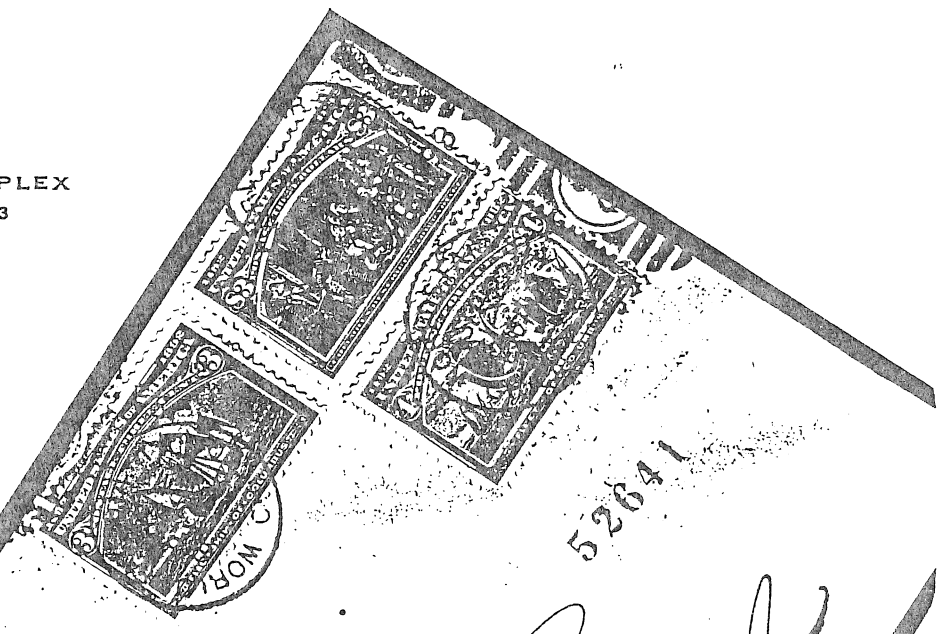
OVERPAYMENT OF THE FIRST CLASS LETTER RATE
BY A PROMINENT STAMP DEALER AND PUBLISHER.



ON A 30 CENT ENTIRE WITH A HORIZONTAL PAIR OF THE 50 CENT VALUE,
REGISTERED FROM MASSACHUSETTS TO COLORADO.

POSTAL USAGE

WORLD'S FAIR STATION DUPLEX
CANCELLATION, WITH THE 3
AND 4 CENT VALUES
REGISTERED TO
NEW YORK.



52641

1391

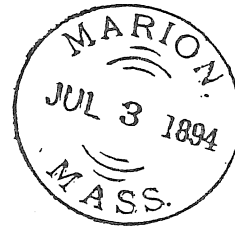
Registered

Mr. Paul
C. McFarlane

Midwest
Marching
27 Park Place
New York

46198

REGISTERED
SEP 22 1893
World's Fair Station,
CHICAGO, ILL.



To The Hon. First Comptroller

Treasury Dept.

Washington D.C.

OVERPAYMENT OF THE FIRST CLASS LETTER RATE, MASSACHUSETTS TO D.C.

please stamp
promptly!

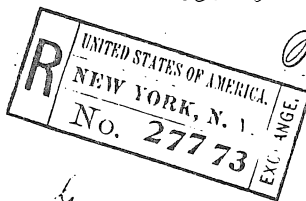
Recommanded!



25386

Herrn

Fr. Vaihinger, Leipzig



Germany.

Lippingen: Ktbg.

Christophstr 52

PHILATELIC USAGE FROM ST. LOUIS TO NEW YORK REGISTRY TO GERMANY.

THE \$4 COLUMBIAN EXPOSITION STAMP

DERIVATION OF THE DESIGN



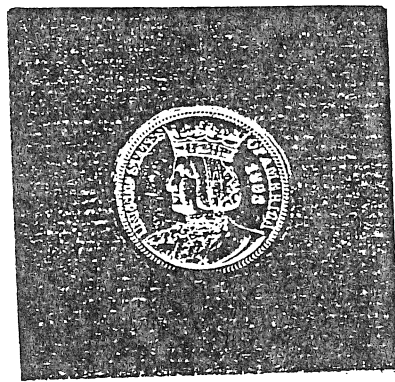
QUEEN ISABELLA OF CASTILE

ENGRAVED AFTER A PAINTING IN THE ROYAL PALACE IN MADRID

THE \$4 COLUMBIAN EXPOSITION STAMP

DERIVATION OF THE DESIGN

A LIFE PORTRAIT OF QUEEN ISABELLA BY BARTOLOMEO BERMEJO IN THE SPANISH ROYAL PALACE IN MADRID WAS THE BASIS FOR THE LEFT VIGNETTE PORTRAIT ON THE \$4 STAMP.



AUTHORITY WAS GRANTED THE BOARD OF LADY GOVERNORS OF THE COLUMBIAN EXPOSITION IN 1893 FOR A COMMEMORATIVE SILVER QUARTER DOLLAR. THEY WERE SOLD FOR \$1. THE RARE ISABELLA QUARTER WAS DESIGNED BY C.E. BARBER, WITH THE QUEEN DEPICTED ON THE FRONT AND A KNEELING FEMALE ON THE REVERSE SIDE, HONORING THE CONTRIBUTIONS OF WOMEN.

THIS, THE ONLY COMMEMORATIVE QUARTER DOLLAR EVER ISSUED BY THE UNITED STATES, WAS PRODUCED IN QUANTITIES OF LESS THAN 25,000. BY CONTRAST, THE COLUMBIAN HALF DOLLAR OF 1892-3 WAS MINTED IN QUANTITIES IN EXCESS OF 2,500,000, MORE THAN ONE HUNDRED TIMES GREATER IN NUMBER.

THE \$4 COLUMBIAN EXPOSITION STAMP

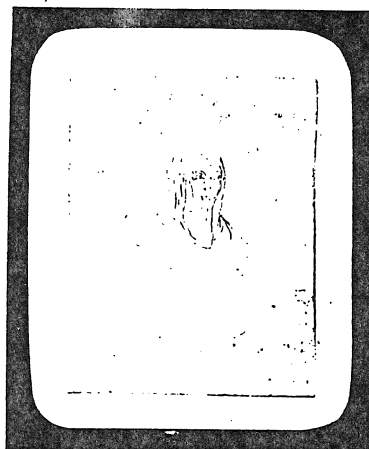
DERIVATION OF THE DESIGN



ENGRAVED AFTER A PAINTING BY ITALIAN ARTIST LORENZO LOTTO

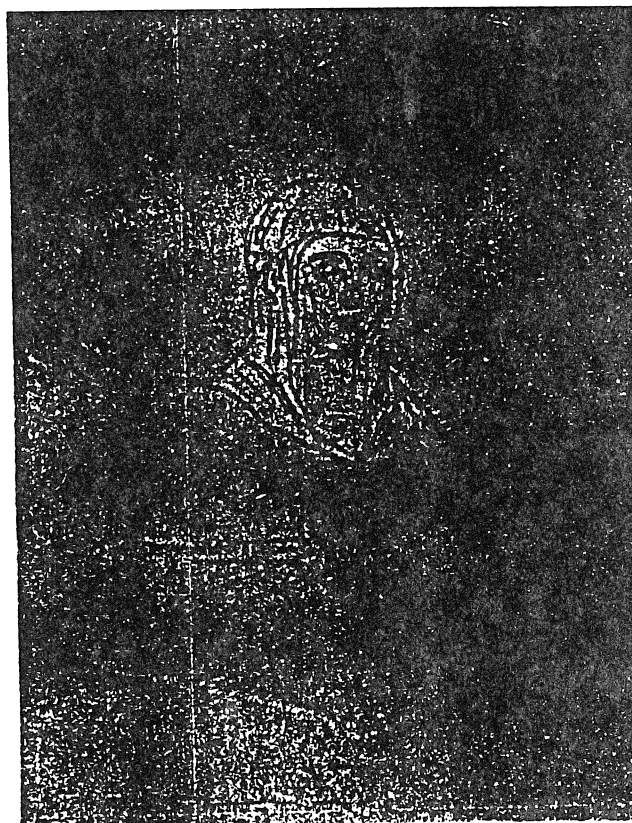
THE \$4 COLUMB AN EXPOSITION STAMP

IMPRESSION FROM FERROTYPE PLATE



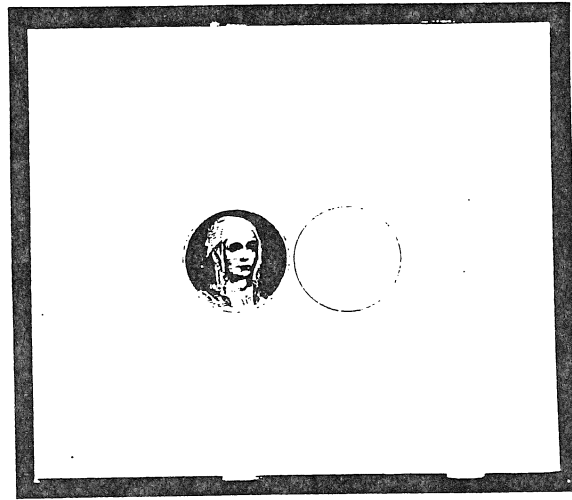
RED INK ON WHITE CARD

POSITIVE IMPRESSION WILL BE TRANSFERRED
TO DIE IN THE NEGATIVE BY THE ENGRAVER.



THE \$4 COLUMBIAN EXPOSITION STAMP

ENGRAVER'S PROGRESSIVE DIE PROOF

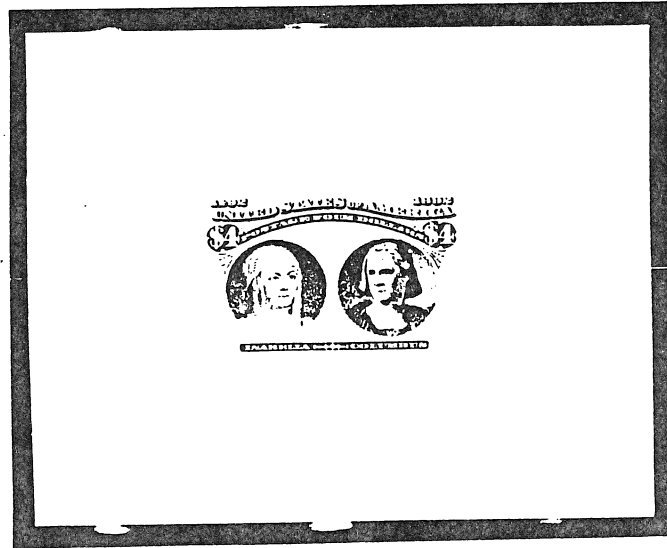


BLACK ON INDIA ON CARD

□ ISABELLA BACKGROUND HORIZONTAL LINES ONLY.
THE NEXT STATE OF THE DIE EXISTS WITH
WITH DIAGONAL LINES PROVIDING SHADING.

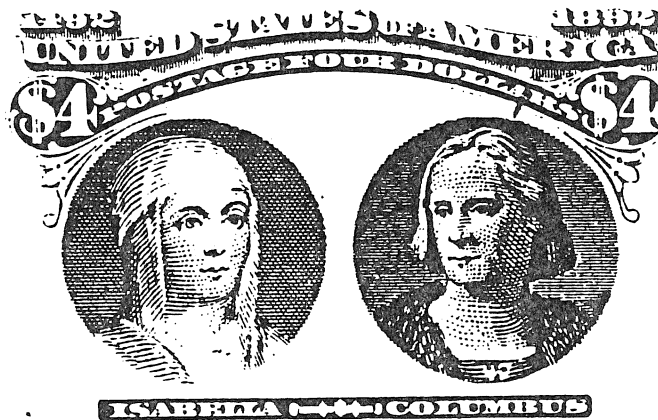


ENGRAVER'S PROGRESSIVE DIE PROOF



DARK RED ON INDIA - DIE SUNK ON CARD

- ISABELLA BACKGROUND WITH DIAGONAL SHADING LINES.
- COLUMBUS BACKGROUND WITH HORIZONTAL LINES ONLY.
- LETTERING AND ORNAMENTATION QUITE INCOMPLETE.



ENGRAVER'S PROGRESSIVE DIE PROOF

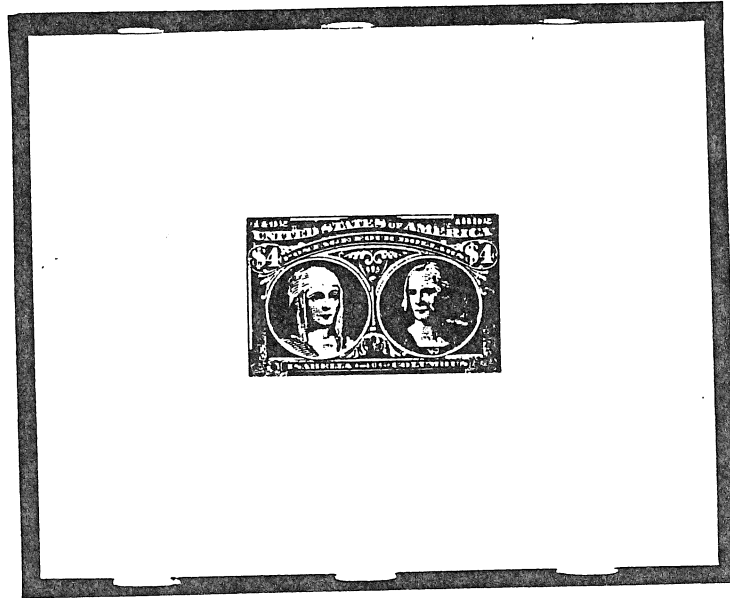


BLACK ON INDIA - MOUNTED ON THICK BEVELED CARDBOARD

- SAME DIE IMPRESSION AS PREVIOUS PAGE, EXCEPT FOR INK AND WASH DRAWING MODELLING OF FRAME.

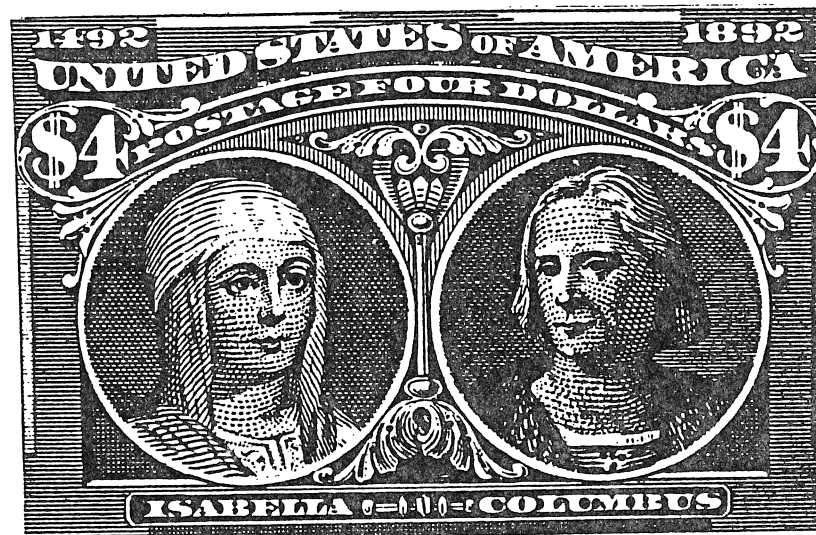


ENGRAVER'S PROGRESSIVE DIE PROOF

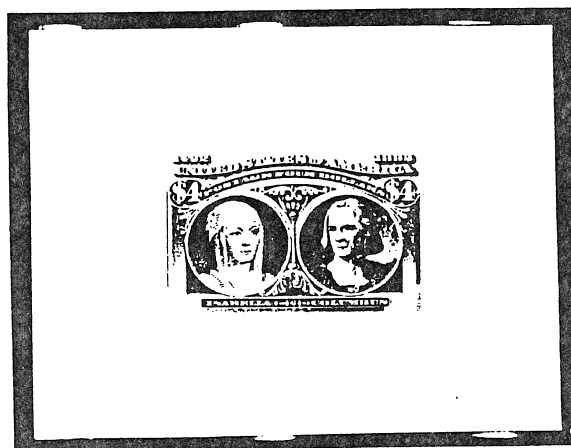


SEPIA ON INDIA ON CARD

- DIAGONAL LINES ADDED TO COLUMBUS VIGNETTE.
- MODELLED FRAME ELEMENTS ENGRAVED.



ENGRAVER'S PROGRESSIVE DIE PROOF



DARK RED ON INDIA ON CARD

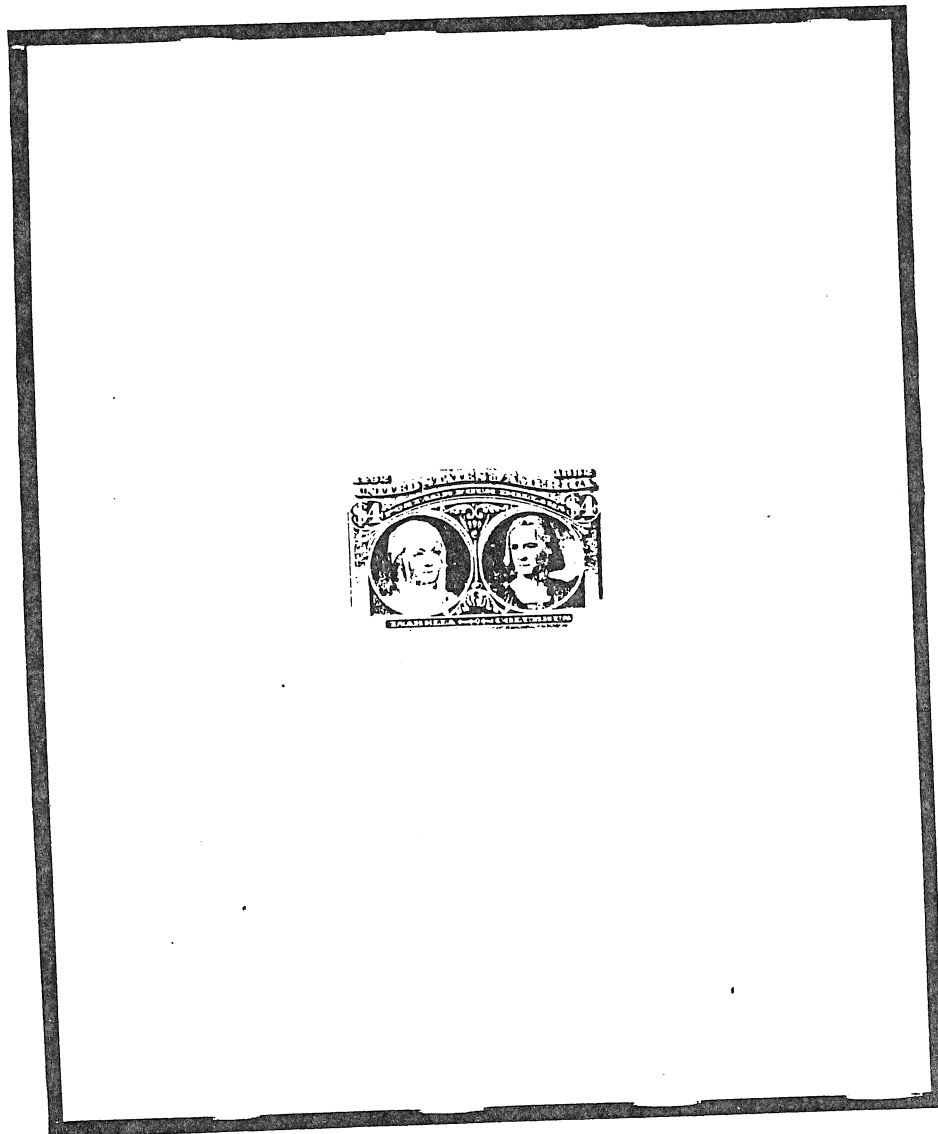
□ MORE ENGRAVING IN SCROLLWORK UNDER THE NUMERALS '4'.



United States
COLUMBIAN EXPOSITION ISSUE OF 1893

THE \$4 COLUMBIAN EXPOSITION STAMP

LARGE DIE PROOF



ROSE CARMINE ON INDIA - DIE SUNK ON CARD

- DIE NUMBER AND AMERICAN BANK NOTE COMPANY IMPRINT
ADDED, INDICATIVE OF THE HARDENING OF THE DIE.



THE \$4 COLUMBIAN EXPOSITION STAMP



DETAIL OF COMPLETED STAMP DESIGN

LARGE DIE PROOF

HYBRID



ROSE CARMINE PLATE PROOF ON INDIA, CUT CLOSE
AND BLOCK SUNK ON INDIA ON CARD.

SIDEROGRAPHER'S CHECK PROOF



No. 107

AMERICAN BANK NOTE COMPANY.

C C

ROSE CARMINE ON CARD

BEARING THE PENCILLED APPROVAL OF AMERICAN BANK NOTE
COMPANY PRESIDENT JAMES MACDONOUGH, DATED NOVEMBER 17, 1892.

10
ARD.

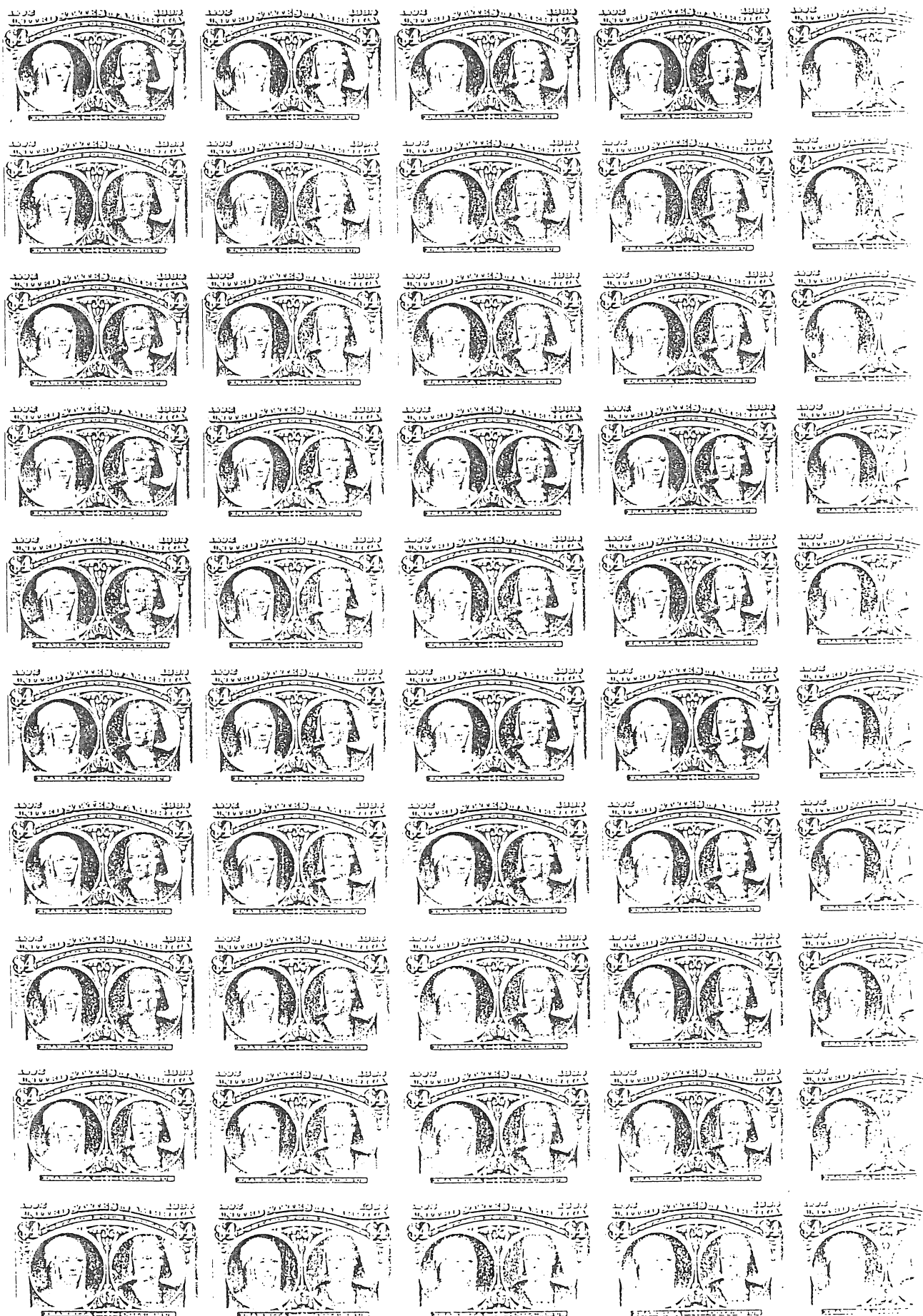
07.

CC

AMERICAN BANK NOTE COMPANY.

No. 107

AMERICAN BANK NOTE COMPANY.

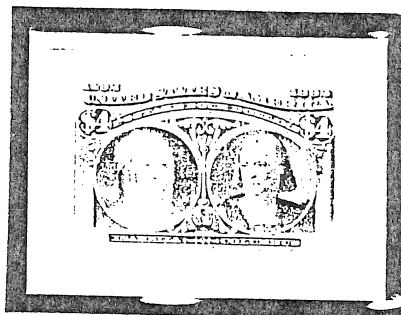


CC

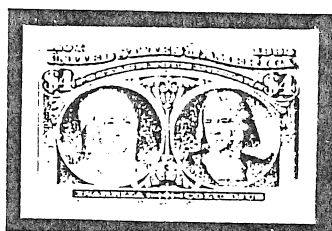
AMERICAN BANK NOTE COMPANY.

No. 107

SMALL DIE PROOFS

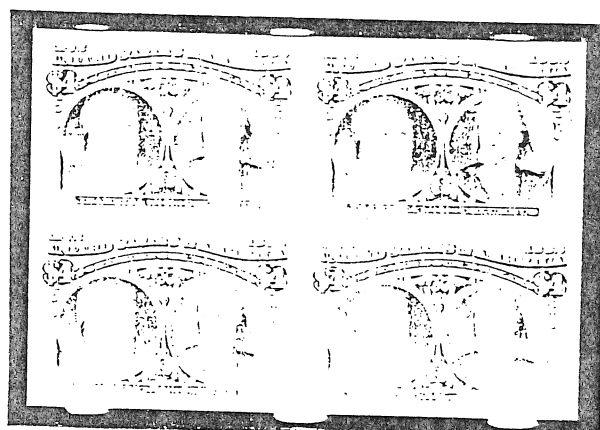


ROSE CARMINE ON WOVE ON GRAY CARD
A 1903 'ROOSEVELT'

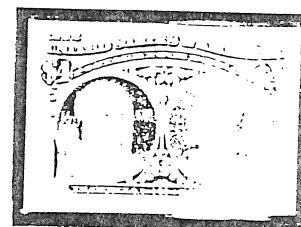


PALE ROSE CARMINE ON YELLOWISH WOVE
A 1915 'PANAMA-PACIFIC'

PLATE PROOFS



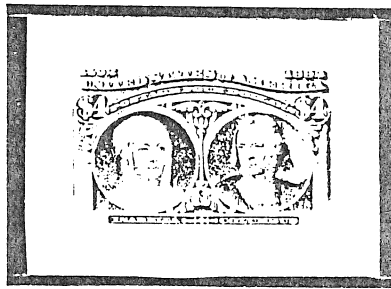
PALE ANALINE ROSE ON INDIA ON CARD



ON CARD

ON INDIA

POSTHUMOUS PROOFS



PALE ANALINE ROSE ON THIN WOVE CARD
WITH MARGINS LARGER THAN THE 'ROOSEVELT' AND 'PANAMA-PACIFIC' PROOFS.

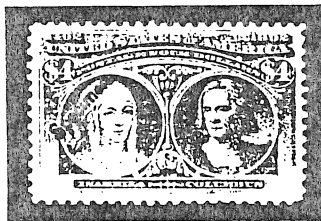


BLACK ON WOVE - BLOCK SUNK ON CARD

PREPARED FOR EXHIBITION

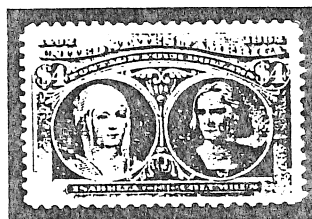
THE \$4 COLUMBIAN EXPOSITION STAMP

'SPECIMEN' STAMP

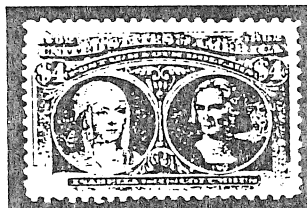


HANDSTAMPED IN BLACK

THE STAMP



ROSE CARMINE ON WOVE



THE SEPARATELY CATALOGUED
PALE ANALINE ROSE SHADE



A RIGHT MARGIN BLOCK OF FOUR

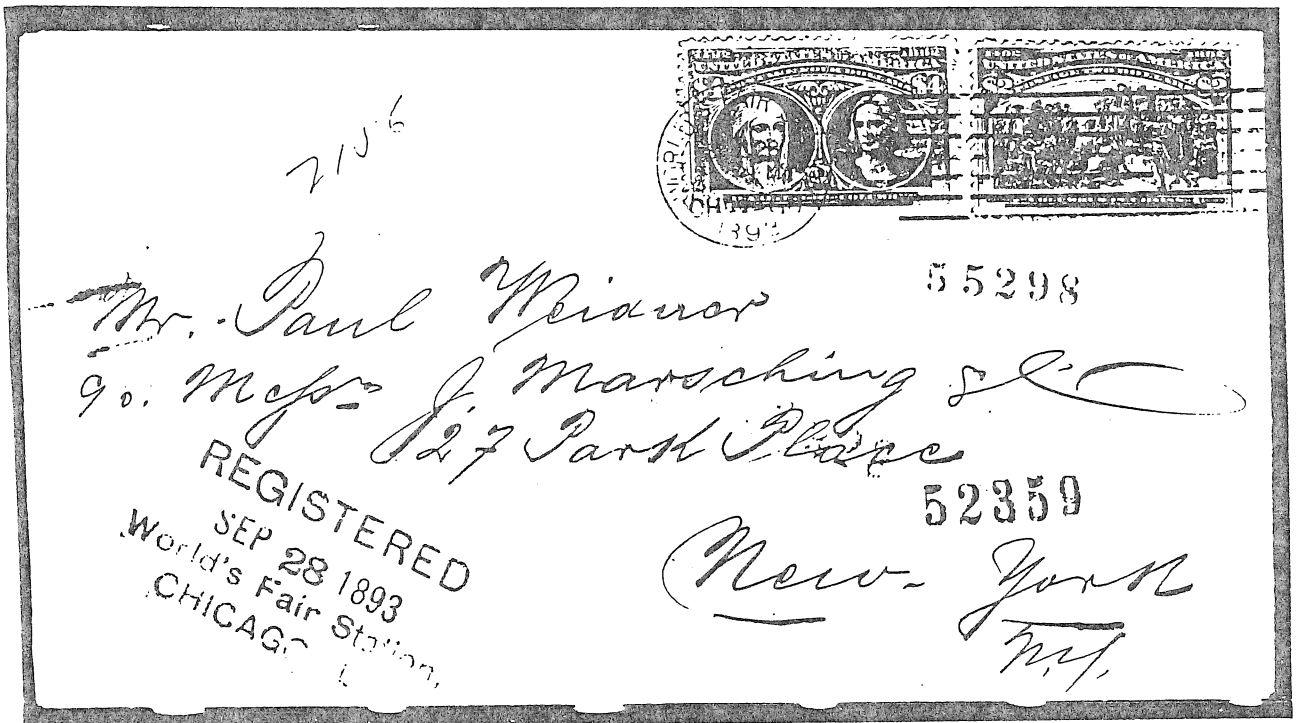
THE \$4 COLUMBIAN EXPOSITION STAMP

THE LARGEST KNOWN MULTIPLE
OF THIS DENOMINATION



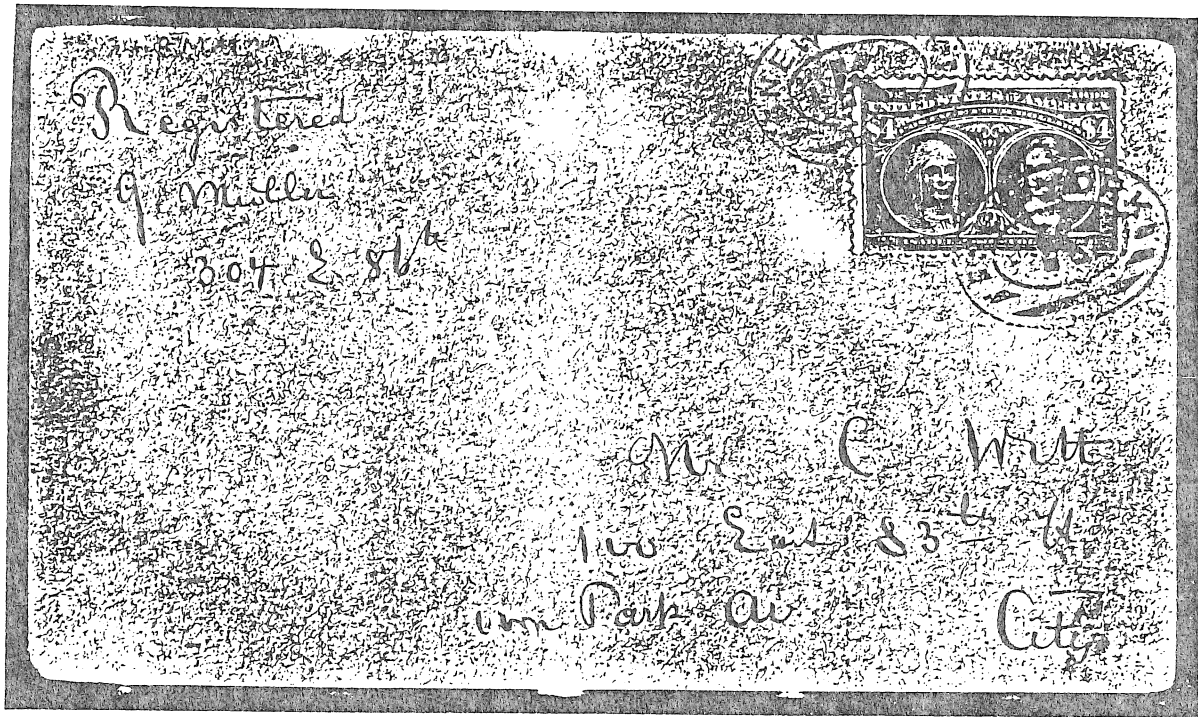
A LEFT MARGIN AND PARTIAL IMPRINT BLOCK OF EIGHT

POSTAL USAGE
OF THE \$4 COLUMBIAN EXPOSITION STAMP
FOR DOMESTIC REGISTRY PURPOSES

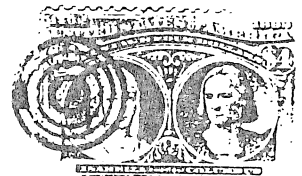
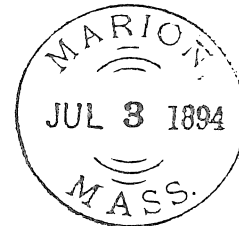


WITH THE \$2 VALUE ON OVERPAID COVER TO NEW YORK
WITH WORLD'S FAIR STATION MACHINE CANCEL AND
AND WORLD'S FAIR REGISTRY HANDSTAMP.

POSTAL USAGE



WITH NEW YORK REGISTRY BACKSTAMP, PHILATELIC USAGE BY NOTED COLLECTORS.



Hon R. B. Bowler

First Comptroller of the Treasury

Washington D C

OVERPAYMENT ON A FIRST CLASS LETTER TO A TREASURY DEPARTMENT OFFICIAL.

POSTAL USAGE
FOR FOREIGN REGISTRY PURPOSES



WITH THE 5 CENT 1890 REGULAR ISSUE ON A CLOTH LINED
WAX SEALED REGISTERED COVER TO FRANCE, VIA THE
STEAMSHIP 'LA GASCOGNE'.

THE \$5 COLUMBIAN EXPOSITION STAMP

DERIVATION OF THE DESIGN

A SPANISH MEDAL WAS THE SOURCE FOR THE CENTRAL PROFILE OF COLUMBUS. IT SERVED AS THE BASIS FOR OLIN L. WARNER'S RENDERING OF THE COLUMBIAN EXPOSITION COMMEMORATIVE COIN, THE 50 CENT PIECE SHOWN HERE. WARNER PROVIDED A PLASTER CAST MADE BY THE TREASURY DEPARTMENT OF THE PROFILE FOR THE GUIDANCE OF THE ENGRAVER OF THE STAMP, CHARLES SKINNER.



THE OFFICIAL POST OFFICE DEPARTMENT DESCRIPTION OF THE STAMP - 'FIVE-DOLLAR. - PROFILE OF HEAD OF COLUMBUS AFTER A CAST PROVIDED BY THE TREASURY DEPARTMENT FOR THE SOUVENIR SILVER PIECE AUTHORIZED BY ACT OF CONGRESS. THE PROFILE IS IN A CIRCLE, ON THE RIGHT OF WHICH IS THE FIGURE OF AMERICA, REPRESENTED BY A FEMALE INDIAN WITH A CROWN OF FEATHERS, AND ON THE LEFT, A FIGURE OF LIBERTY, BOTH FIGURES BEING IN A SITTING POSTURE. COLOR, BLACK.'

Jun 25th 1893

Friend Schoff.

Yours of the 23rd received. In reply to the request for a set of Proofs of the "Columbian Stamps" in Black. Such a series has not been printed in each case they were proved in the colors. That were selected for each denomination by the P. O. Dept and strict instructions were given by the Dept and by the Officers of the O^l to prevent proofs getting out. The only Stamp printed in Black is the Five Dollars. of which I send you an unfinished Proof. I also send a proof of the 50¢ + 5¢. These were my own ^{work} and I happen to have them in my Desk. and claim the right to give my own work to an old friend. Of course you will keep them quietly to yourself.

Yours Very Truly. Chas Skinner

ENGRAVER'S PROGRESSIVE DIE PROOF

FIRST STATE OF THE DIE



BLACK ON INDIA - DIE SUNK ON CARD

- ☐ BRAZER BELIEVED THIS TO BE THE ONLY COPY IN EXISTENCE.
- ☐ PENCILLING IN MEDALLION APPEARS AS ENGRAVING IN THE NEXT STATE OF THE DIE.
- ☐ ENGRAVING QUITE INCOMPLETE.

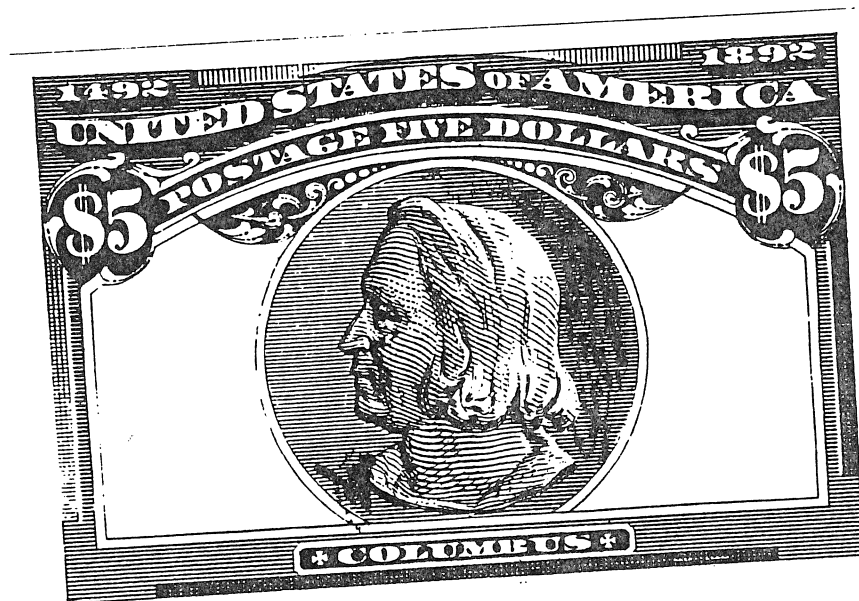
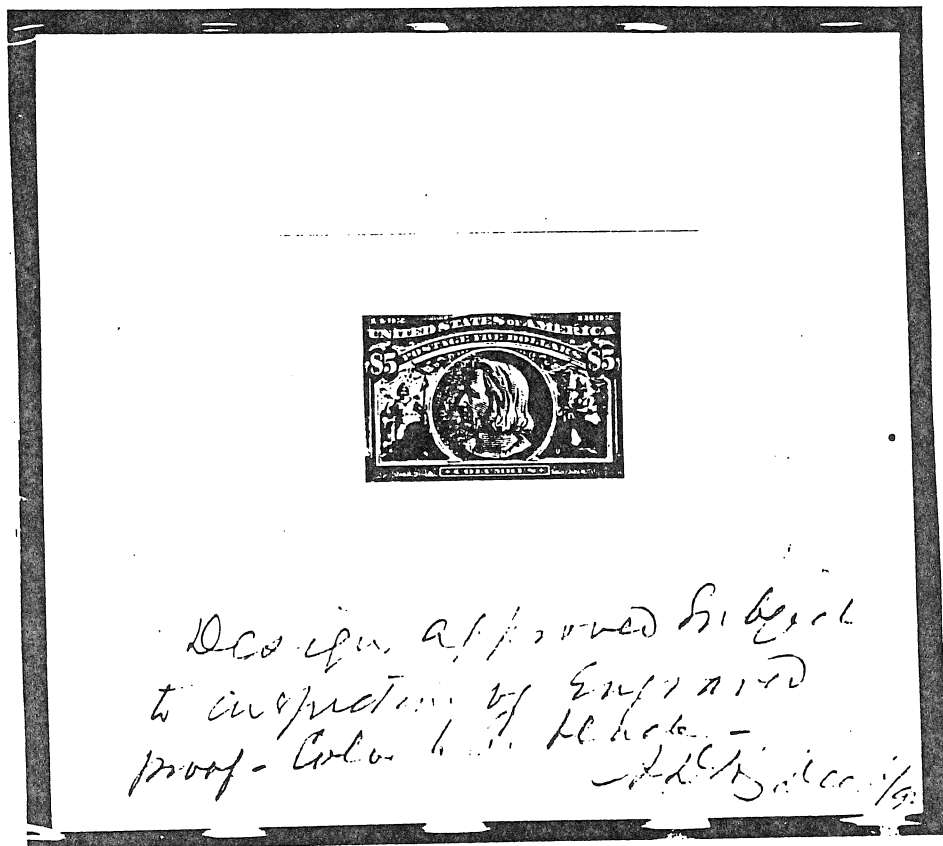


PHOTO ENLARGED 300%

ENGRAVER'S PROGRESSIVE DIE PROOF

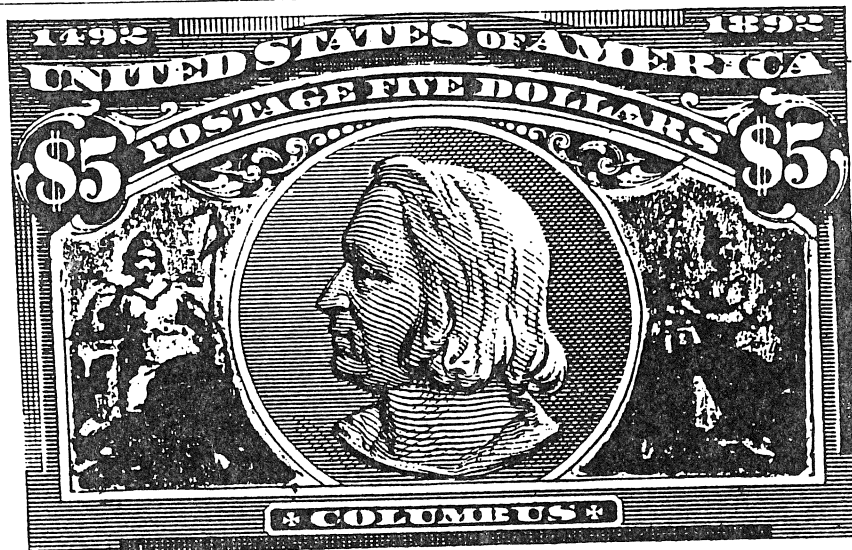
SECOND STATE OF THE DIE



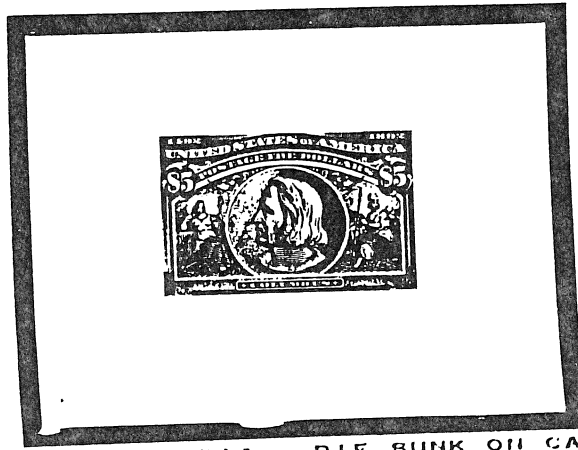
BLACK ON INDIA - DIE SUNK ON CARD - MOUNTED ON HEAVIER CARD

DESIGN APPROVED BY THIRD ASSISTANT POSTMASTER GENERAL A.D. HAZEN

- ☐ REMOVAL OF SILVER PRINT SIDE PANELS REVEALS BLANK SPACES, AS IN FIRST STATE OF THE DIE.
- ☐ ENGRAVING IN MEDALLION BEHIND COLUMBUS' HEAD DARK-ENED BY CROSS-HATCHING.



THIRD STATE OF THE DIE



BLACK ON INDIA - DIE BUNK ON CARD

- ☐ SIDE PANELS ENGRAVED WITH THE FIGURE OF 'AMERICA' ON THE RIGHT, REPRESENTED BY A FEMALE INDIAN WITH A CROWN OF FEATHERS, AND ON THE LEFT, A FIGURE OF 'LIBERTY'.



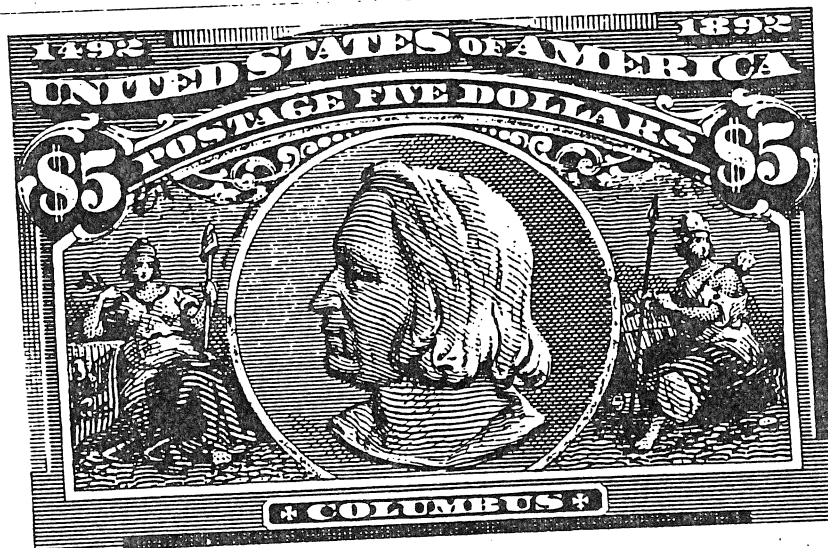
ENGRAVER'S PROGRESSIVE DIE PROOF

THIRD STATE OF THE DIE
WITH MODELLING



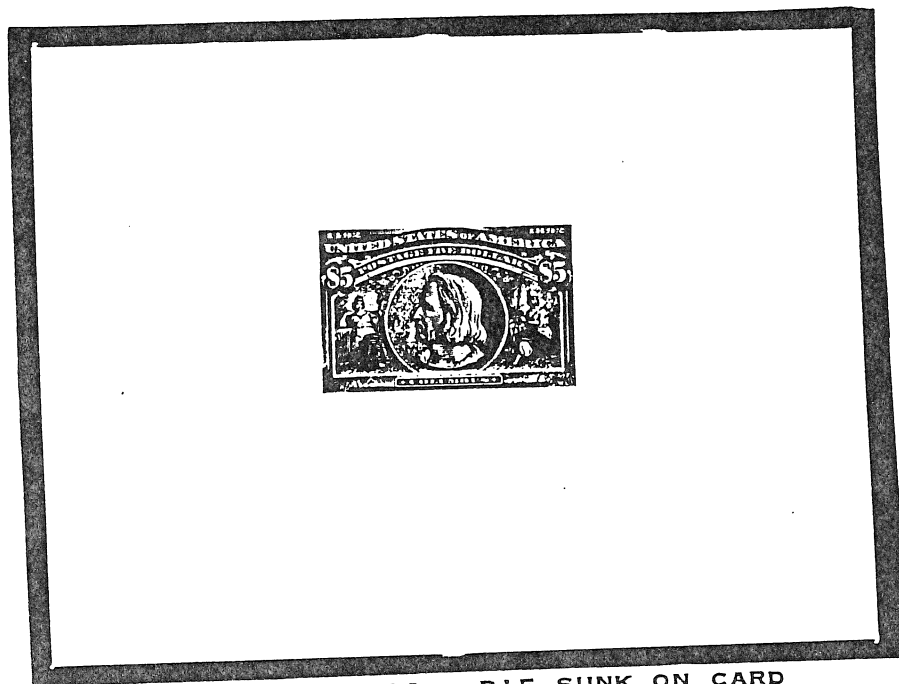
BLACK ON INDIA - DIE SUNK ON CARD
PENCIL AND WHITE INK MODELLING

- ☐ PENCIL MODELLING AROUND CIRCLE OF MEDALLION.
- ☐ WHITE INK LIGHTENING OF SCROLLWORK AT UPPER RIGHT AND LEFT OF MEDALLION.
- ☐ PENCIL LINE BELOW 'POSTAGE FIVE DOLLARS', WHICH REAPPEARS IN LATER STATE AS ENGRAVED LINES.
- ☐ PENCILLING IN LAP ROBES AND IN FOREGROUND OF SEATED FIGURES, WHICH REAPPEARS AS ACID ETCHING IN LATER STATES.



ENGRAVER'S PROGRESSIVE DIE PROOF

FOURTH STATE OF THE DIE

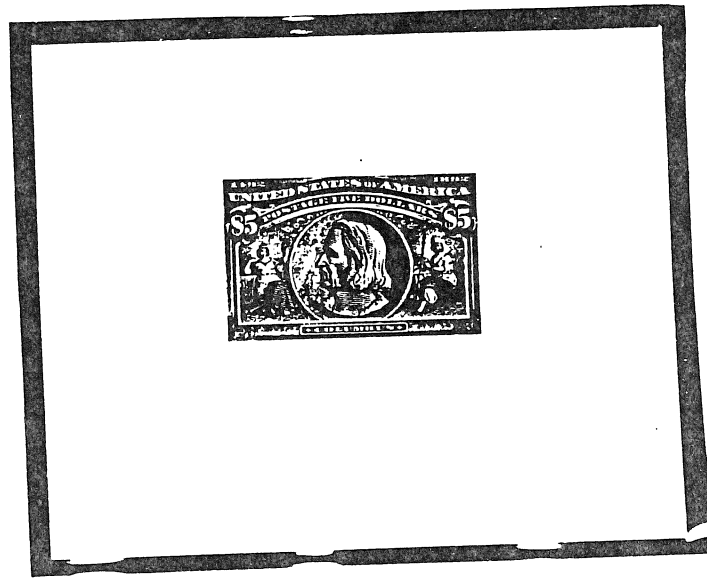


BLACK ON INDIA - DIE SUNK ON CARD

- ☐ CROSS-HATCHING ON LOWER PORTION OF MEDALLION FRAME.
- ☐ SCROLLWORK AT UPPER RIGHT AND LEFT OF MEDALLION RESTORED TO ORIGINAL INTENSITY.
- ☐ DECORATIVE LINES ENGRAVED IN FRAME BELOW '\$5'.

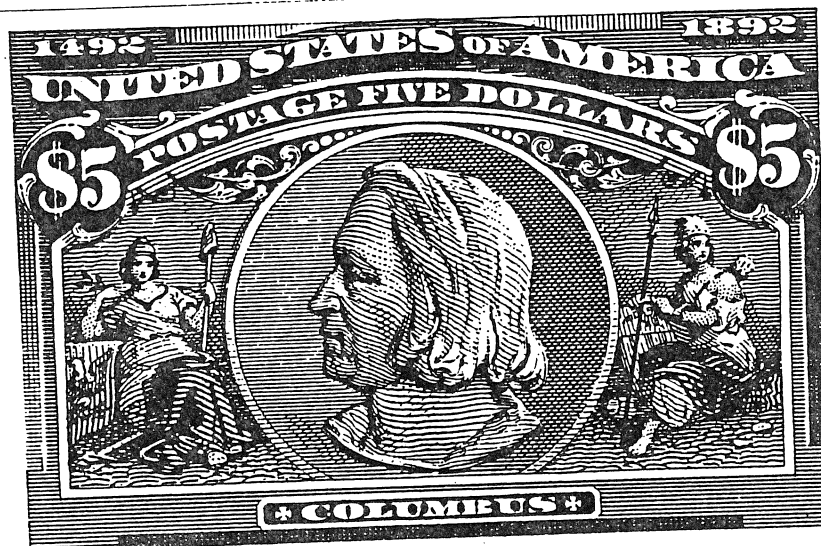


FIFTH STATE OF THE DIE



BLACK ON INDIA - DIE SUNK ON CARD

- ☐ LAP ROBES ON FEMALE FIGURES ACID ETCHED.
- ☐ ADDITIONAL ENGRAVING IN ORNAMENTS SURROUNDING '\$5'.
- ☐ ANOTHER LINE AT LEFT AND RIGHT BELOW 'POSTAGE FIVE DOLLARS'.
- ☐ MORE SCROLLWORK ENGRAVED ABOVE SEATED FIGURES.
- ☐ ENGRAVED LINES OUTSIDE UPPER LEFT OF MEDALLION.



LARGE DIE PROOF

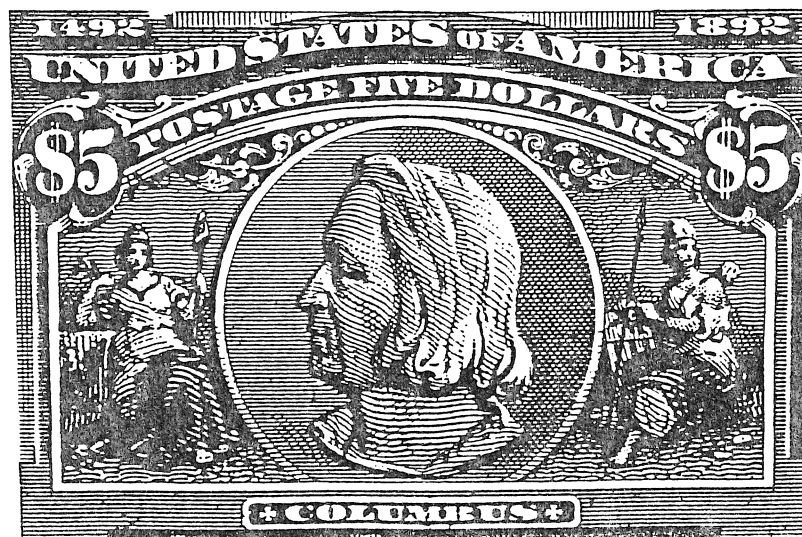


C-275

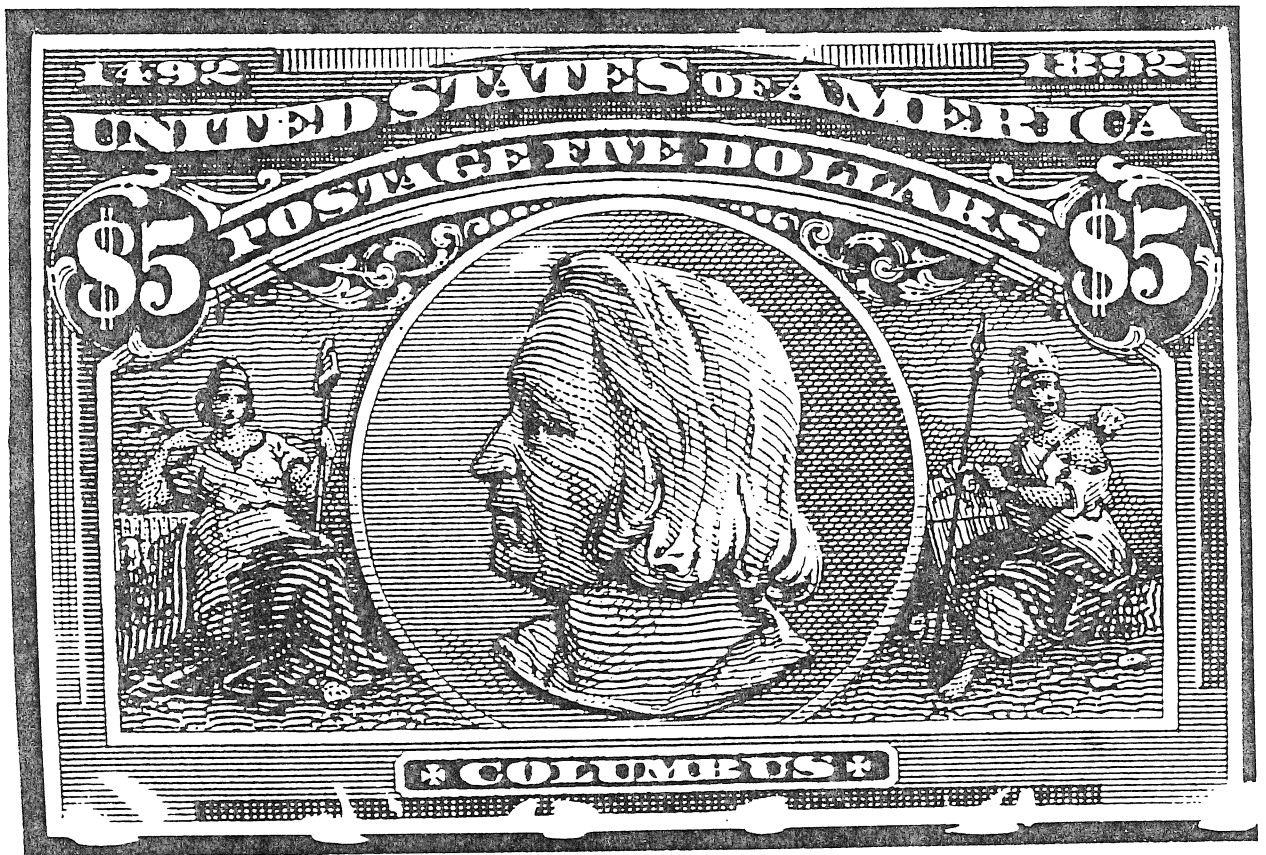
AMERICAN BANK NOTE CO. N.Y.

BLACK ON INDIA - DIE SUNK ON CARD

- ☐ ADDITIONAL ENGRAVING TO STAFF HELD BY FIGURE SEATED AT LEFT, MINOR ADDITION TO LEFT SCROLLWORK AND ETCHING NOT FOUND IN THE FIFTH STATE OF THE DIE.



THE \$5 COLUMBIAN EXPOSITION STAMP



DETAIL OF COMPLETED STAMP DESIGN

LARGE DIE PROOF



BLACK ON INDIA - DIE SUNK ON FULL-SIZE CARD

LARGE DIE PROOF



American Bank Note Co. New York

A VARIETY, NOT DIE SUNK, BUT SURFACE PRINTED DIRECTLY
ON CARD. DOES NOT BEAR THE DIE NUMBER 'C-275' AS DO
LARGE DIE PROOFS AND TRIAL COLOR PROOFS IN THIS SERIES.

THE IDENTIFICATION 'AMERICAN BANK NOTE CO. NEW-YORK'
IS SPACED LOWER ON THE CARD THAN THE DIE SUNK VARIETY.

LARGE DIE PROOF

HYBRID



BLACK ON INDIA - BLOCK SUNK ON CARD

THIS VARIETY RESULTS WHEN A PLATE PROOF ON INDIA IS CUT CLOSE, CENTERED ON A BLANK PIECE OF INDIA PAPER, AND BLOCK SUNK ON CARD.

THE GILT EDGE FOUND ON THREE SIDES INDICATES THIS WAS A PAGE FROM A PRESENTATION ALBUM OR SAMPLE BOOK BOUND FOR DIGNITARIES OR PATRONS OF THE AMERICAN BANK NOTE COMPANY.

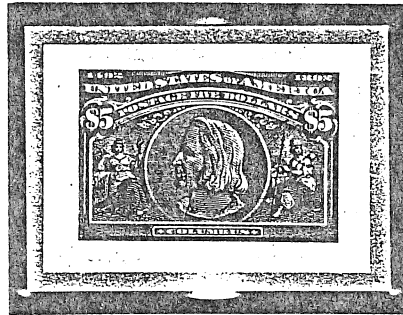
LARGE DIE PROOF



BLACK ON WOVE - BLOCK SUNK

UNDER CONTRACT WITH THE AMERICAN BANK NOTE COMPANY,
THE DIES FOR ALL U.S. STAMPS PRINTED BECAME THE PROPERTY
OF THE POST OFFICE DEPARTMENT. THIS DIE PROOF IS OF THE
TYPE SOMETIMES PRINTED FOR DISPLAY AT STAMP EXPOSITIONS
LONG AFTER THE DATES OF ISSUE.

SMALL DIE PROOFS

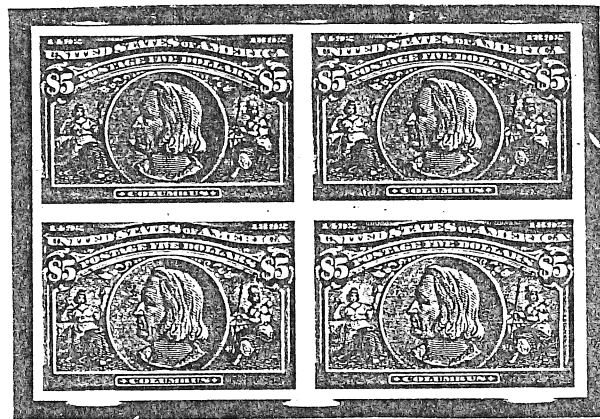


BLACK ON WHITE WOVE - MOUNTED ON GRAY CARD
FROM A 1903 'ROOSEVELT' ALBUM



BLACK ON YELLOWISH WOVE
ONE OF A HALF DOZEN PRINTED FOR DISPLAY
AT THE PANAMA-PACIFIC EXPOSITION OF 1915

PLATE PROOFS



BLACK ON INDIA WITH ORIGINAL CARD BACKING



BLACK ON CARD

PLATE PROOFS

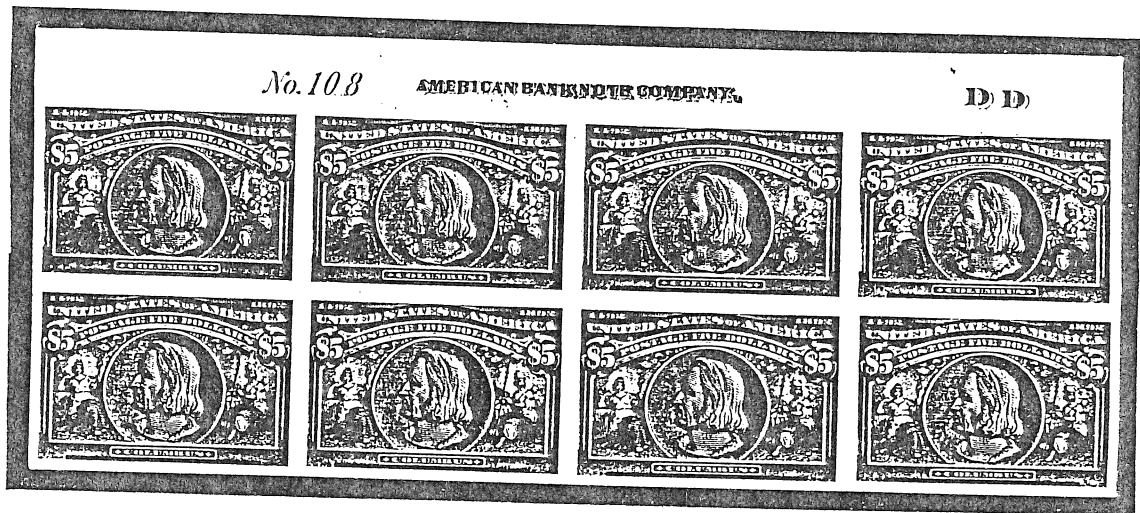


PLATE PROOF PULLED FOR THE BENEFIT OF THE SIDEROGRAPHER (PLATEMAKER) SO AS TO FACILITATE THE REMOVAL OR REDUCTION OF GUIDE LINES, POSITIONING DOTS AND REENTRY MARKS BEFORE SUBMITTING PLATE TO THE POST OFFICE DEPARTMENT FOR FINAL APPROVAL, AS SHOWN ON NEXT PAGE.

AMERICAN

D D



IMPRINT MARKED FOR REENTRY



LINES AND DOTS LATER REMOVED

PLATE PROOFS



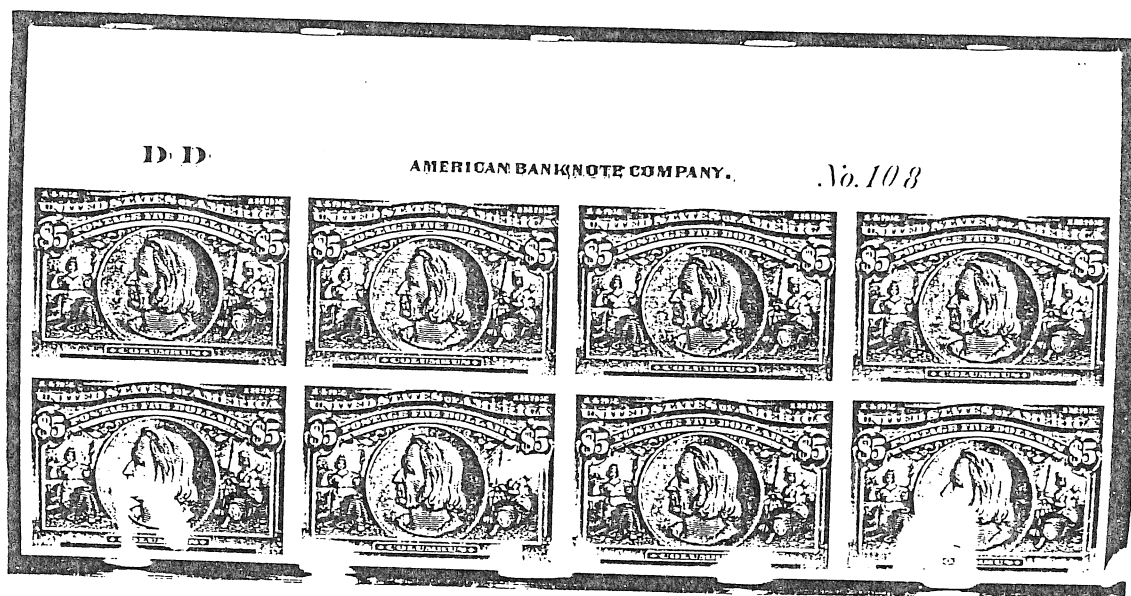
No. 108

AMERICAN BANK NOTE COMPANY.

D D

BLACK ON CARD

BOTTOM TEN ENTRIES FROM RIGHT PANE OF PLATE NO. 108, WITH GUIDE LINES AND POSITIONING DOTS REMOVED AS SHOWN BELOW. PENCIL NOTE 'THIS PLATE MUST BE GONE OVER WITH FINE EMERY' INITIALED BY AMERICAN BANK NOTE PRESIDENT JAMES MACDONOUGH.



D D

AMERICAN BANK NOTE COMPANY.

No. 108

BLACK ON INDIA - ORIGINAL CARD BACKING

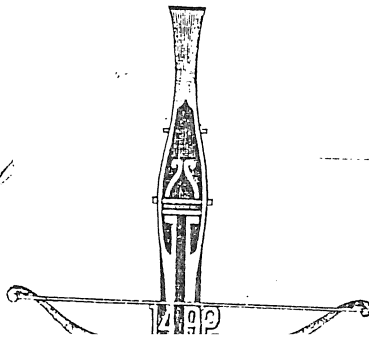
EIGHT ENTRIES FROM TOP TWO ROWS OF RIGHT PANE, PLATE 108, SHOWING THE TIDYING EFFECT OF BURNISHING THE PLATE WITH FINE EMERY. LINES AND DOTS ARE LESS VISIBLE.



To All Whom it may Concern.
Know Ye That D. H. James
Guard of Company No. Eleven Columbian Guard
who was appointed the Twenty fifth day of April 1892
is hereby honorably discharged from the service of said Exposition
by reason of expiration of service
Given under my hand this Twenty fifth day of
December in the year of our Lord one thousand eight
hundred and ninety four

Adjutant

Commander



THE \$5 COLUMBIAN EXPOSITION STAMP

'SPECIMEN' STAMP



HANDSTAMPED IN DULL VIOLET
EXCHANGED WITH FOREIGN POSTAL AUTHORITIES FOR IDENTIFICATION PURPOSES

THE STAMP



BLACK ON WOVE - 12 PERFORATIONS PER 2 CENTIMETERS



A WELL-CENTERED BLOCK OF FOUR

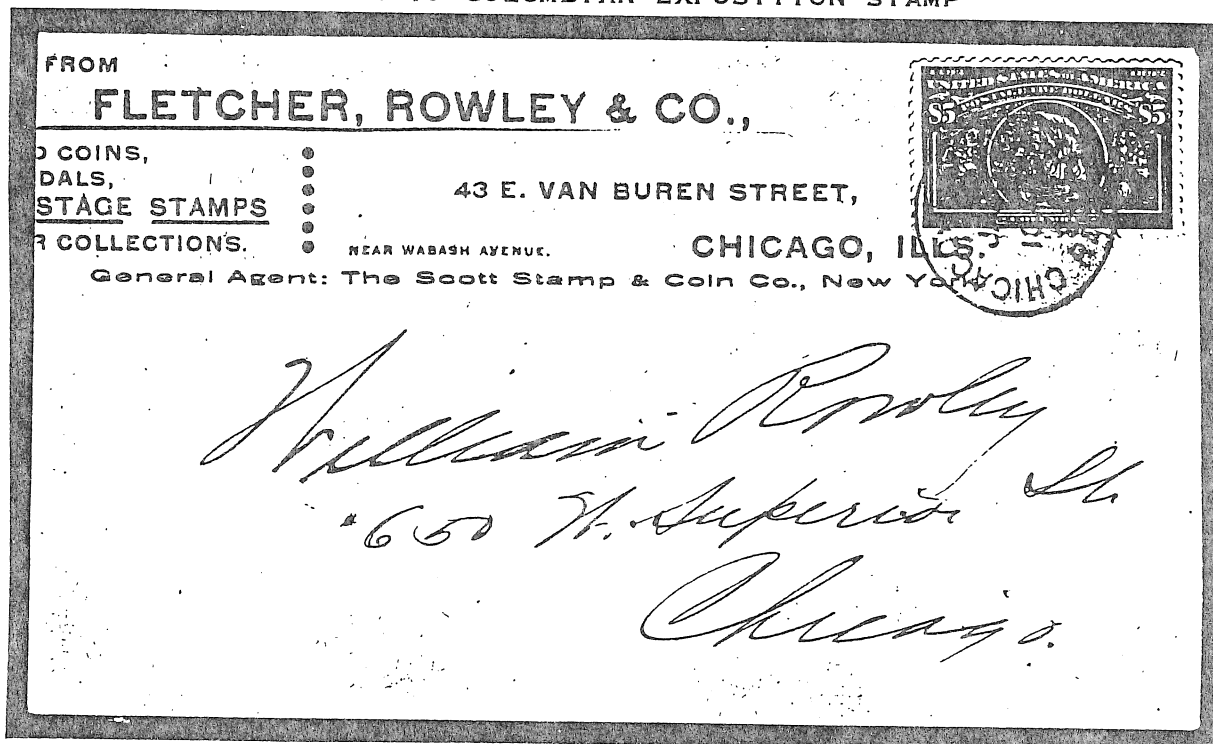
APPROXIMATELY 270 SHEETS OF 100 (10 X 10) OF THIS
DENOMINATION WERE PRINTED, BUT A HIGH PERCENTAGE OF
THEM WERE DESTROYED BECAUSE OF LIMITED POSTAL USAGE.

THE \$5 COLUMBIAN EXPOSITION STAMP

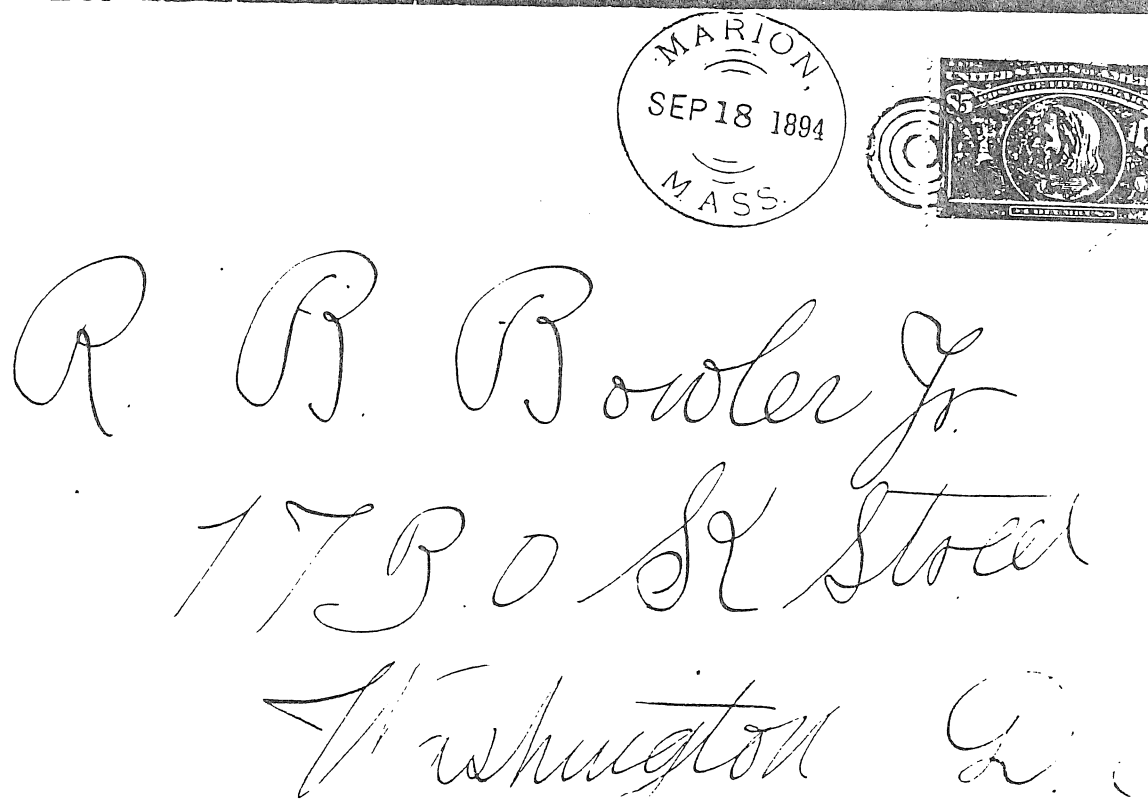


THE LARGEST KNOWN MULTIPLE OF THIS DENOMINATION,
A BLOCK OF FOURTEEN.

POSTAL USAGE
OF THE \$5 COLUMBIAN EXPOSITION STAMP

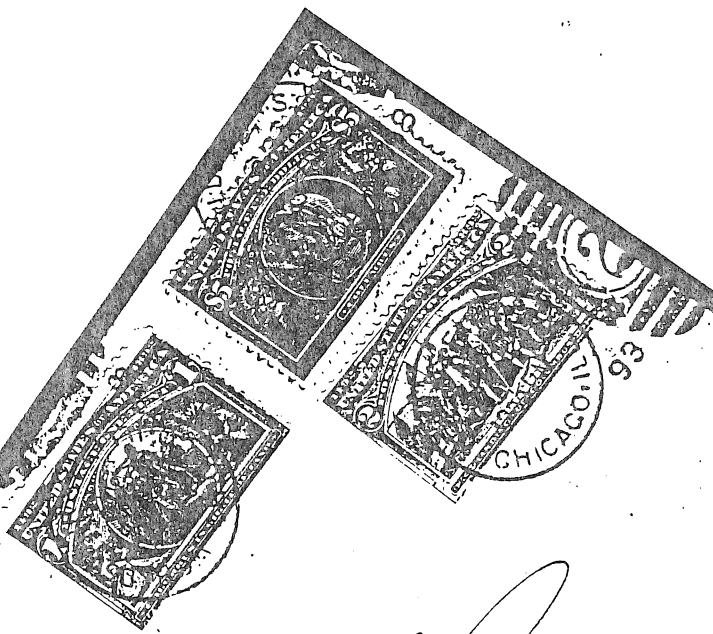


PHILATELIC USAGE BY A CHICAGO STAMP DEALER.



ADDRESSED TO R.B. BOWLER, JR., THE FIRST COMPTROLLER OF THE TREASURY.

POSTAL USAGE
OF THE
\$5 COLUMBIAN



Registered

Mr. Paul
Go. Meyer

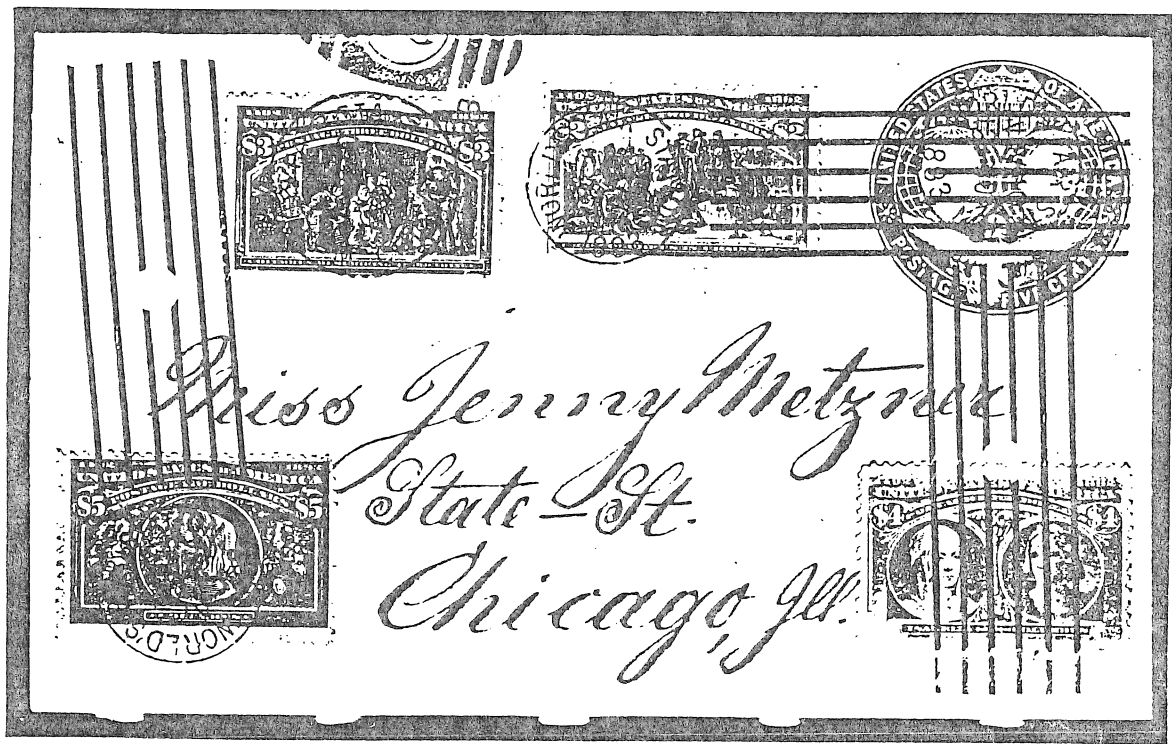
REGISTERED
SEP 22 1893

World's Fair Station,
CHICAGO, ILL.

1389
Windsor 46438
J. Marsching
27 Park Place 52639
New York

WITH THE 1 CENT AND
2 CENT VALUES ON A
REGISTERED USAGE WITH
WORLD'S FAIR STATION
REGISTRY STAMP AND
CIRCULAR DATE STAMPS.

POSTAL USAGE



WITH THE \$2, \$3, AND \$4 VALUES ON COLUMBIAN ENTIRE
WITH THREE MACHINE CANCELS AND ONE HAND CANCEL, ALL
OF WHICH ARE THE RARE WORLD'S FAIR STATION VARIETY.