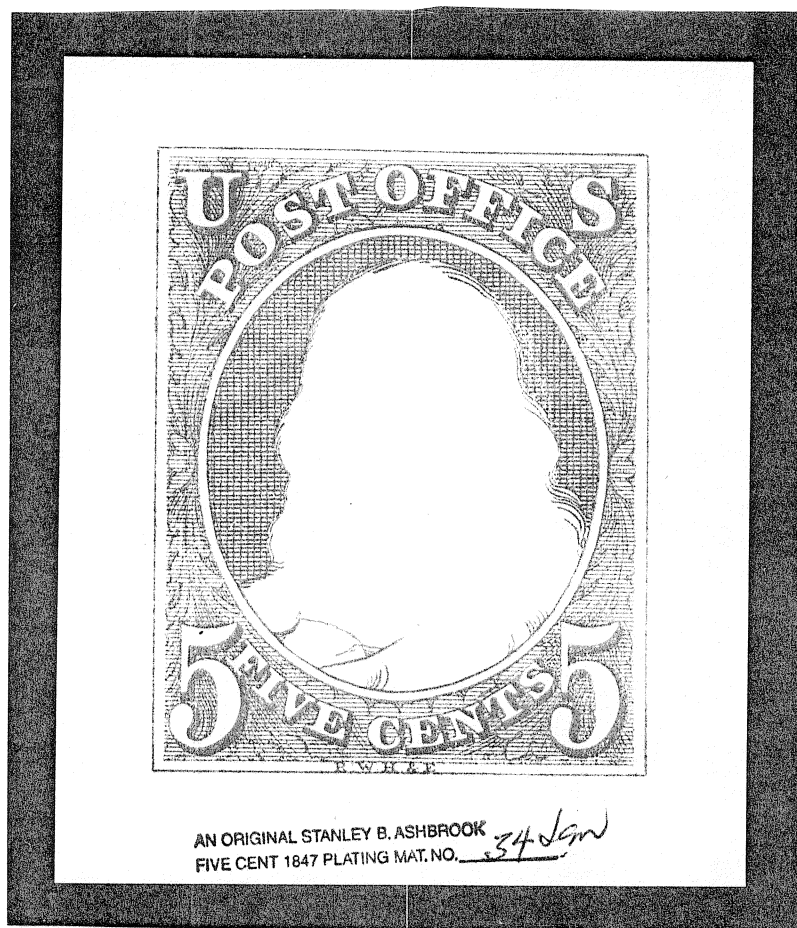


ESSAYS AND PROOFS OF THE FIRST U.S. POSTAL ISSUE
AND THEIR REPRODUCTIONS
1847-1997

HENRY MARASSE

AS RECEIVED BY
THE EXHIBITION PHOTOCOPY COMMITTEE
OF THE
U.S. PHILATELIC CLASSICS SOCIETY, INC.
JULY 1997

ESSAYS AND PROOFS OF



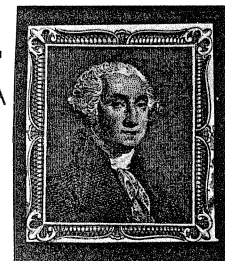
THE FIRST U.S. POSTAL ISSUE
AND THEIR REPRODUCTIONS
1847 - 1997

ESSAYS AND PROOFS OF THE FIRST U.S. POSTAGE STAMP ISSUE
 THEIR 1875 AND SEVEN SUBSEQUENT REPRODUCTIONS
 AND THEIR FATE FOR A CENTURY AND A HALF
 FROM 1847 TO 1997

HISTORICAL BACKGROUND THE FIRST ISSUE OF U.S. POSTAGE STAMPS WAS
 ***** AUTHORIZED ON 3 MARCH 1847 BY CONGRESS. BY
 THE END OF MARCH ARRANGEMENTS WERE CONCLUDED BETWEEN THE POSTAL
 AUTHORITIES AND THE FIRM OF RAWDON, WRIGHT, HATCH, AND EDSON TO FURNISH
 5 AND 10 CENT STAMPS AT THE RATE OF 20 CENTS PER THOUSAND. A PROPOSAL BY
 RWH&E ON 31 MARCH TO PRINT THE NUMERALS IN RED FOR BETTER SECURITY, AT
 THE RATE OF 25 CENTS/THOUSAND WAS NOT ACCEPTED. NO ESSAYS NOR PROOFS OF
 A BICOLOR DESIGN HAVE SURFACED IN 150 YEARS. THUS, WITHIN 4 WEEKS AFTER
 PASSAGE OF THE BILL THE RWH&E BID WAS ACCEPTED. THERE IS NO MENTION OF
 PROOFS IN THE EXISTING CORRESPONDENCE, BUT THERE EXISTS ONE SET OF ESSAYS
 FOR THE FRAME. THE USE OF PRE-EXISTING PORTRAIT DIES ACCOUNTS FOR THE
 THE SPEED OF THE PRODUCTION AND THE FINISHED STAMPS WERE READY FOR
 SHIPMENT ONE DAY BEFORE THE FIRST OF JULY DEADLINE.



PORTRAIT VIGNETTES OF THE 1847 ISSUE ARE
 DERIVED FROM ENGRAVINGS BY ASHER DURAND
 (THE SUBSEQUENTLY FAMOUS "HUDSON SCHOOL"
 LANDSCAPE PAINTER). THEY WERE FIRST USED ON A
 1832 \$10 FLORIDA BANKNOTE WITH RWH CO IM-
 PRINT. THESE DIES CONTINUED TO BE USED ON A
 SERIES OF OTHER BANKNOTES IN VARIOUS STATES
 PRINTED BY THE SAME FIRM UNTIL 1858 WHEN
 RWH&E MERGED WITH THE ABN CO.



OBJECT OF THIS EXHIBIT A STUDY OF THE FULL RANGE OF THE SCARCE ESSAYS
 ***** AND PROOFS OF THE FIRST U.S. POSTAGE ISSUE, THEIR
 CHRONOLOGY AND PHILATELIC SIGNIFICANCE. THEIR ROLE IN THE DESIGN OF 7
 SERIES OF REPRODUCTIONS ISSUED BY THE POST OFFICE DEPARTMENT TO THE
 PRESENT DAYS IS DEMONSTRATED. CONTRIBUTIONS FROM THE STUDY OF PLATE
 PROOFS TO A BETTER UNDERSTANDING OF STAMP PRODUCTION AND PLATE
 VARIETIES AND POSITIONS ARE ILLUSTRATED.

CONTEMPORARY 1847 MATERIAL EXISTS IN VERY LIMITED QUANTITY. THERE IS
 A UNIQUE SET OF ESSAYS, SHOWN HERE, A FEW DIE PROOFS, AND THE REMNANTS
 OF PLATE PROOFS ISSUED IN SINGLE SHEETS OF 200 IN 3 COLORS, SOME WITH
 SPECIMEN OVERPRINT. THEY ARE DERIVED FROM THE ORIGINAL DIES, DESTROYED
 IN 1851 WHEN THE ISSUE WAS DEMONETIZED.

SUBSEQUENT PRINTINGS WERE MADE FROM NEW DIES DERIVED FROM TRANSFER
 RELIEF ROLLS RETAINED BY RWH&E. THESE DIES, NEVER HARDENED, SHOW PROGRESSIVE
 DEFECTS PARTICULARLY EVIDENT ON THE LATER 5 CENT PROOFS. THESE DATE FROM
 1858 WHEN RWH&E MERGED WITH THE THE AMERICAN BANKNOTE CO, THROUGH THE
 MERGER WITH THE CONTINENTAL BANBKNOTE CO TO ABOUT 1895.

REPRODUCTIONS STARTED FROM NEW DIES IN 1875. COMPOSITE LARGE DIE PROOFS
 (1875) EXIST IN BLACK (UNIQUE) AND GREEN (2 KNOWN) ONE OF WHICH IS
 SHOWN HERE. LATER PLATE PROOFS ON CARDBOARD WERE ISSUED IN 5 EMISSIONS
 OF 500 FROM 1879 1893 AND ON INDIA AND BOND PAPER IN VERY LIMITED AMOUNTS

SHORTLY THEREAFTER. IN 1881 PLATE PROOFS IN 5 COLORS WERE EXHIBITED IN
 ATLANTA IN SHEETS OF 50. SMALL DIE PROOFS IN 1902 (ROOSEVELT) and 1915
 (PAN-PACIFIC) CAME NEXT. IN 1947 THE CIPEX SHEET WAS ISSUED FROM NEW DIES,
 SLIGHTLY LARGER, FOR THE CENTENARY. IN 1972 A REPLICA OF THE 5 CENT 1847
 GRACED THE 8 CENT STAMP COMMEMORATING STAMP COLLECTING. FINALLY, THE
 LATEST INCARNATION WILL APPEAR IN MAY 1997 IN THE FORM A SET OF 50 AND 60
 CENT STAMPS ACCOMPANIED BY REPRINTS OF THE 5 AND TEN CENT DIE PROOFS
 WITH CROSSHATCHING..

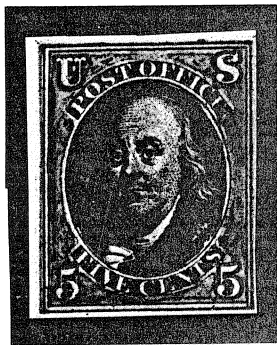
ESSAYS (MODELS) FOR THE 1847 CONTRACT

CHIEF MODELLER
RWHSE
DESIGNER OF
1847 ISSUE

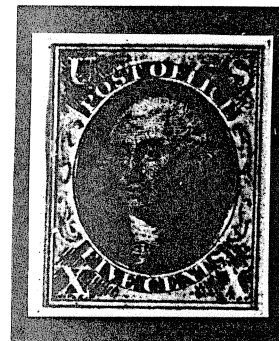


ORIGINAL PHOTO

JAMES P. MAJOR

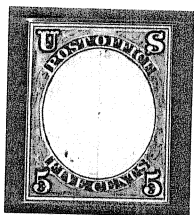


THE ESSAYS ARE ILLUSTRATED
HERE 1½ X PHOTOGRAPHICALLY
FOR HISTORICAL PURPOSES.



CLARENCE W. BRAZER DISCOVERED THIS PAIR OF ORIGINAL ESSAYS (MODELS) HANGING, FRAMED, AT THE HOME OF A DESCENDANT OF JAMES P. MAJOR, WHO WAS CHIEF MODELLER (DESIGNER) AND ENGRAVER AT THE FIRM OF RAWDON, WRIGHT, HATCH AND (LATER) EDSON FROM 1836 TO 1858. THEIR APPEARANCE AT THE TIME OF ACQUISITION BY BRAZER (BETWEEN 1936 AND 1940) IS SHOWN IN THE PHOTOGRAPHS TAKEN FROM HIS 1941 BOOK ON U.S. ESSAYS. WHICH CONTAINS THE FIRST DESCRIPTION OF THESE ESSAYS IN THE PHILATELIC LITERATURE.

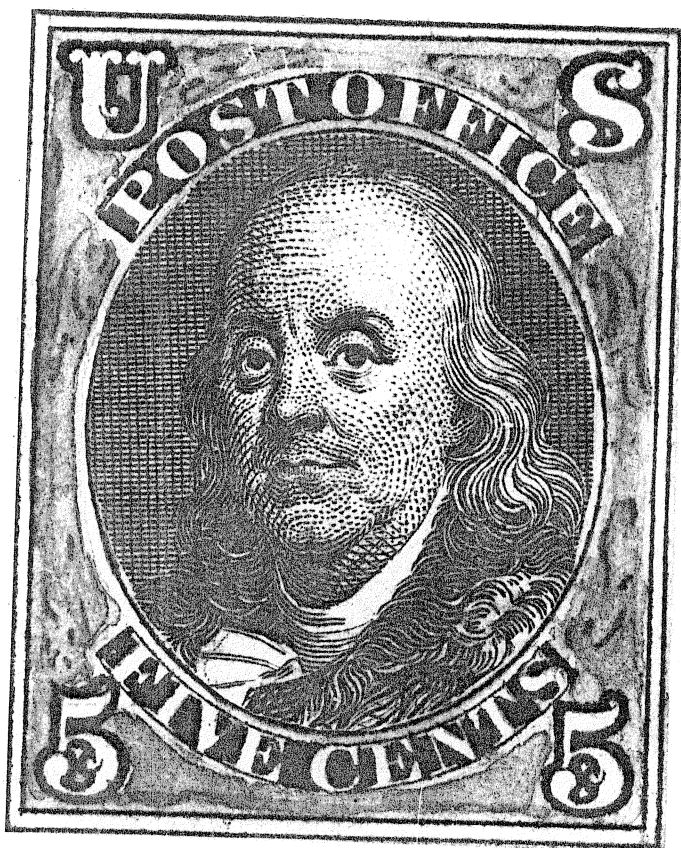
THE ORIGINAL FIVE CENT MODEL



ORIGINAL MODEL BY
JAMES P. MAJOR
LABELS ENGRAVED,
BALANCE DRAWN IN
INK, PENCIL, & WASH.
IT IS OF STAMP
SIZE: 19X24MM



FRANKLIN VIGNETTE
BY ASHER B. DURAND
CUT DOWN BLACK DIE
TRIAL COLOR ON INDIA
DOT ON FOREHEAD IS
SEEN ONLY AFTER 1858

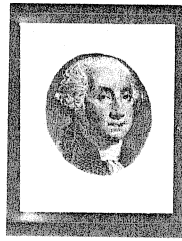
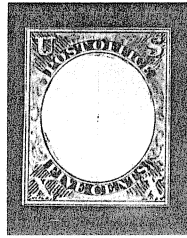


PHOTOGRAPHIC ENLARGEMENT.

THIS IS A PHOTO OF THE FIVE CENT MODEL AS PURCHASED BY BRAZER.
THE VIGNETTE IS SHOWN SEPARATELY SINCE IT DATES AFTER 1858.
IT IS NOT KNOWN WHEN IT WAS MOUNTED ON THE OVAL OF THE HAND_-
DRAWN FRAME DESIGN AND BY WHOM.

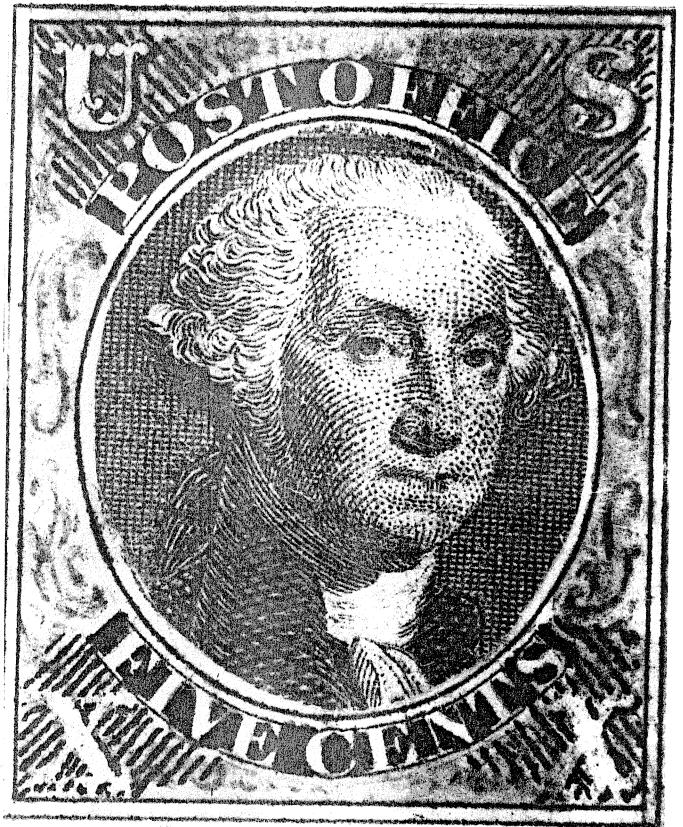
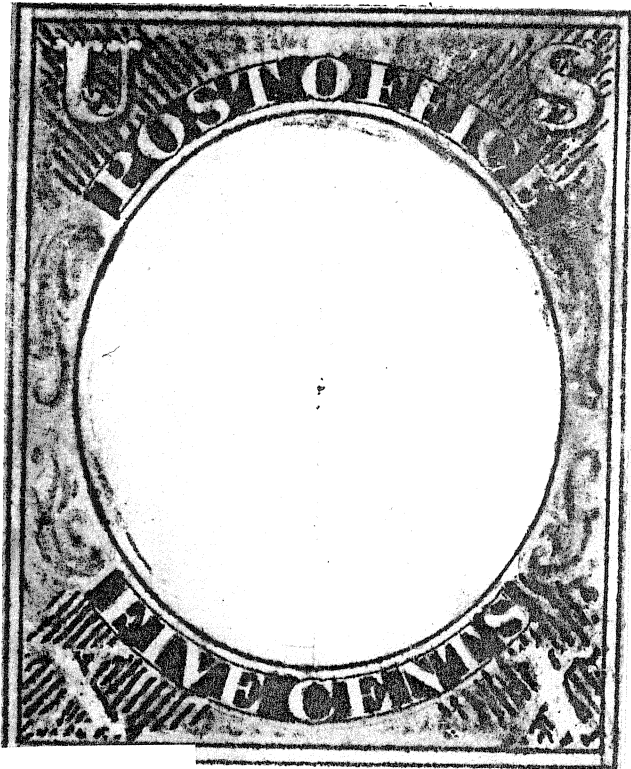
THE ORIGINAL TEN CENT MODEL

ORIGINAL
MODEL BY
J.P.MAJOR
LABELS ENGR.,
BLACK INK,
PENCIL, WASH
ON THICK
CARDBOARD



CORRECT
VIGNETTE
APPEARED
IN 1956
HERE SHOWN
SEPARATELY

IN THE ORIGINAL DESCRIPTION OF THIS TEN CENT MODEL IN 1941 BRAZER SHOWS WASHINGTON FACING LEFT. THIS VIGNETTE PROPERLY BELONGS TO THE TWELVE CENT STAMP OF THE 1851 ISSUE, AS ILLUSTRATED. IN HIS 1947 MONOGRAPH IT IS PICTURED WITHOUT VIGNETTE. BRAZER COMMENTS THAT HE BOUGHT IT WITH THE "WRONG" VIGNETTE WHICH NOW HAS BEEN "REMOVED". THE "RIGHT" VIGNETTE (SHOWN SEPARATELY ON THIS PAGE) APPEARED IN THE 1956 SIEGEL CATALOGUE OF THE FORMER BRAZER 1847 PROOF AND ESSAY COLLECTION WITH THE COMMENT: "VIGNETTE REPLACED".



PROVENANCE:
EX ROSENTHAL PICTURED 1947
EX BIERMAN
EX POPE
EX DICK
EX BRAZER
EX DESCENDANTS
OF J.P.MAJOR,
DESIGNER

PHOTOGRAPHIC ENLARGEMENT.

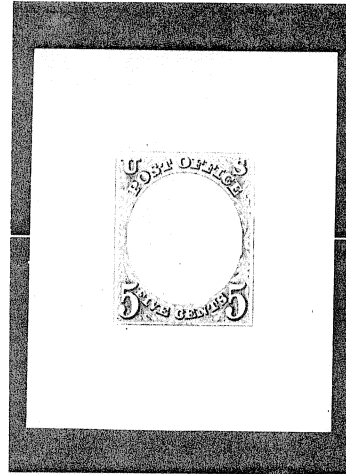
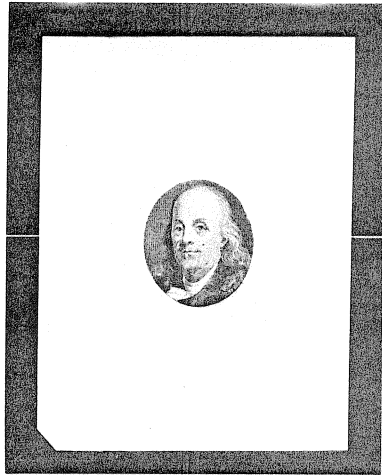
SINCE 1956

D I E E S S A Y S O N I N D I A P A P E R

VIGNETTE

FRAME

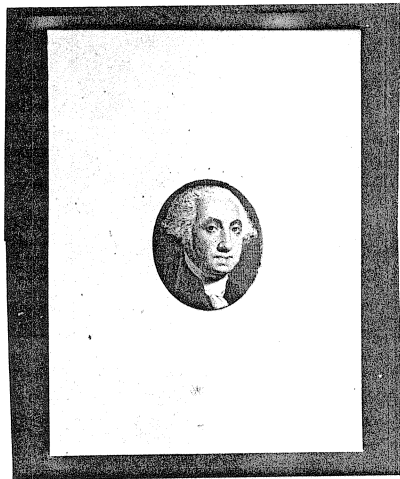
BROWN



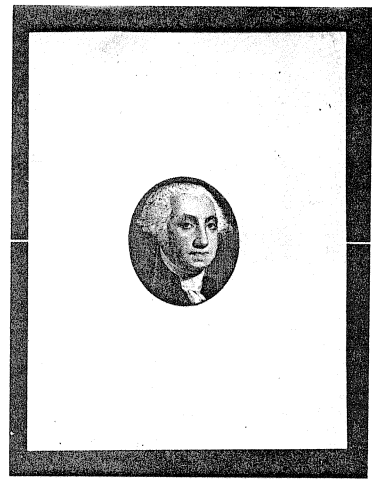
BROWN

VIGNETTE

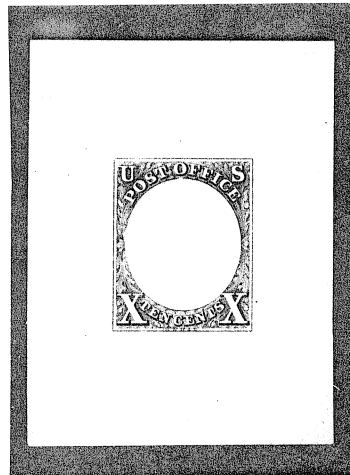
VIGNETTE



FRAME



BLACK-BROWN
ALSO EXISTS
IN BROWN

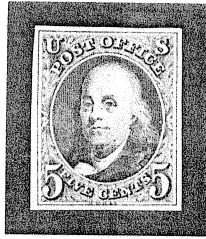


BLACK

BLACK
ALSO EXISTS
IN BROWN/OR.

PRINTED ABOUT 1895 FROM COMPLETE DIES THROUGH CUT OUT MATS

SMALL DIE PROOFS IN ISSUED COLOR ON VARIOUS PAPERS



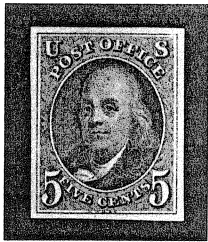
INDIA



INDIA



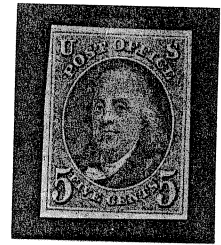
BOND



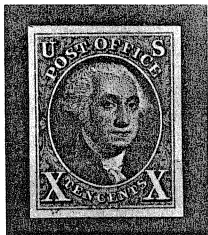
WHITE LAID



GREEN
BOND



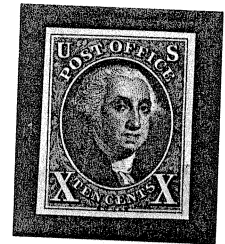
BLUE LAID



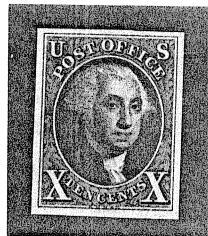
WHITE
BOND



FAKE



BLUE LAID



WHITE WOVE



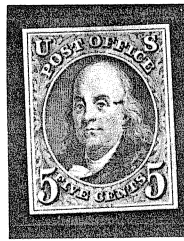
BLUISH LAID

THIS PROOF
WAS LISTED
AS UNUSED
STAMP IN
SCOTT 1900
TO 1904

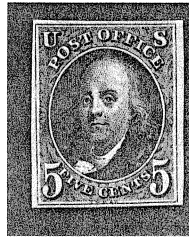
SEE NOTE
RE LARGE
DIE PROOF
ON BLUE
LAID

SMALL DIE TRIAL COLOR PROOFS OF THE 5 CENT ISSUE
SHOWING PROGRESSIVE DIE DEFECTS

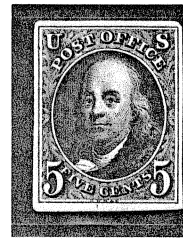
1847
ORIGINAL
DIE



DARK
BROWN



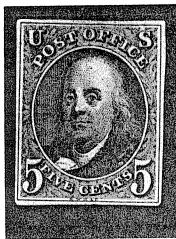
BLACK



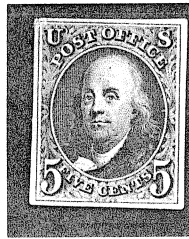
DEEP
BLUE

INDIA

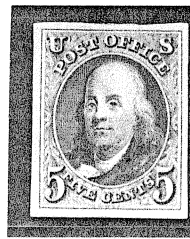
1859
DOT ON
FOREHEAD



DARK
BROWN



BLACK
BROWN



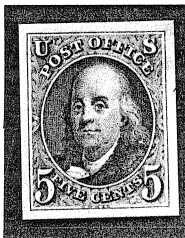
YELLOW
GREEN



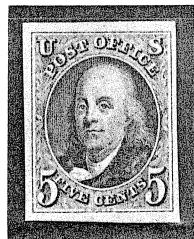
ROSE
LAKE

INDIA

1879
DOT ON
FOREHEAD
+ ABOVE P



DARK
GREEN



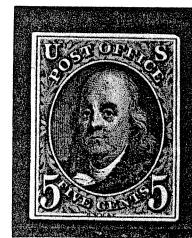
BLUE
GREEN



DULL
BLUE



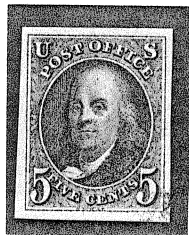
BLUE



DEEP
BLUE

INDIA

DEEP
BLUE

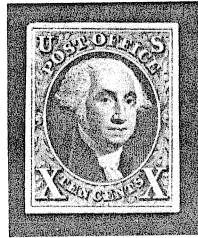


BOND

IN 1858 RWH&E WAS ONE OF THE SEVEN FIRMS TO FORM THE AMERICAN BANKNOTE CO (THE ASSOCIATION). IN 1879 IT MERGED WITH THE NAT'L AND THE CONTINENTAL BANK CO (THE CONSOLIDATED CO). IT IS THOUGHT SOME PROOFS WERE ISSUED ON THE OCCASION OF EACH MERGER.

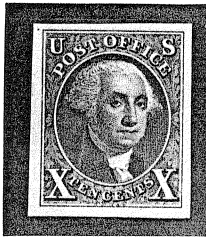
SMALL DIE TRIAL COLOR PROOFS ON INDIA AND BOND

THE TEN CENT ISSUE

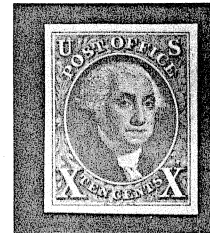


YELLOW GREEN ON
BLUE PELURE

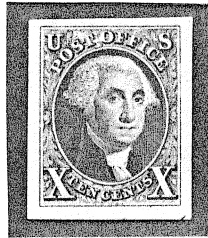
INDIA



GOLD.
BROWN



ORANGE
VERM.

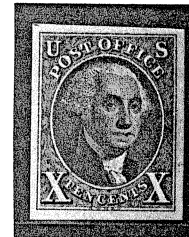


YELLOW GREEN

BOND



DEEP
BLUE



BLUE
GREEN

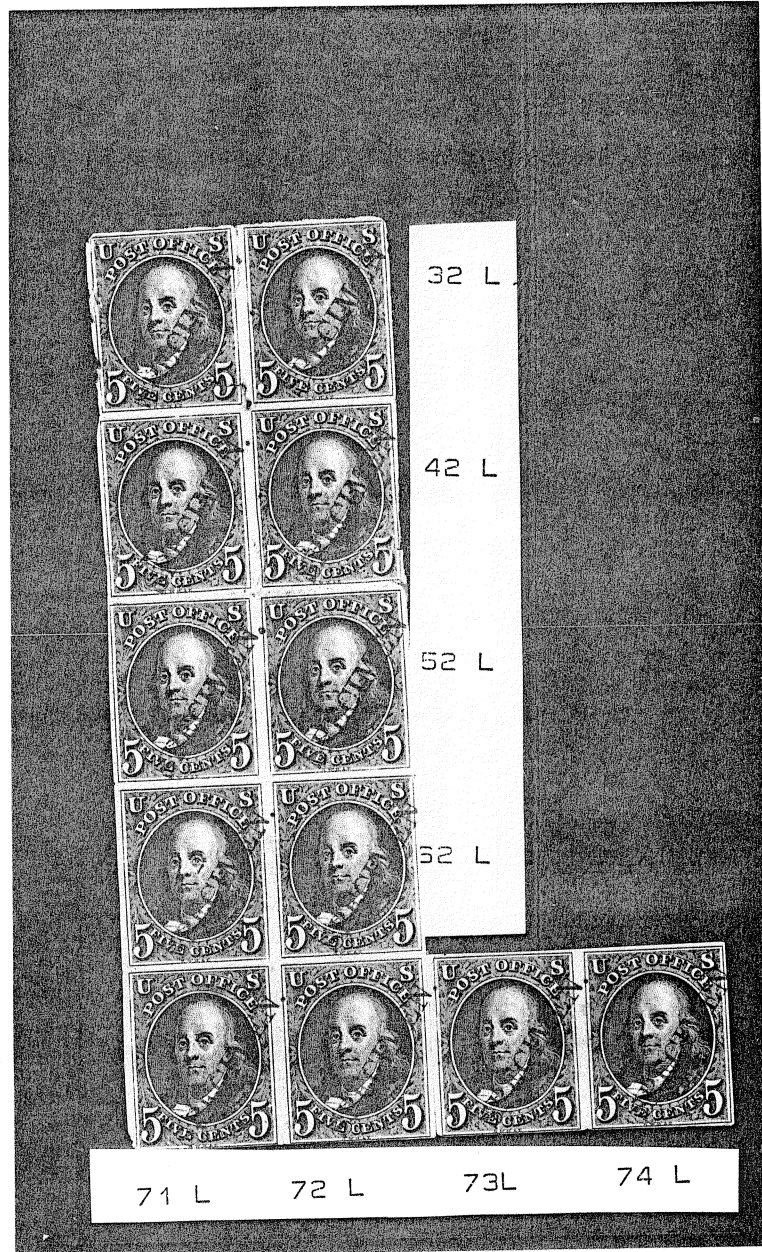


DULL
ROSE

PLATE TRIAL COLOR PROOFS

THE PLATE PROOFS OF THE FIVE CENT STAMP ARE DISTINGUISHED FROM DIE PROOFS BY THE ABSENCE OF THE SHORT DIAGONAL DASH ACROSS THE UPPER LEFT FRAME LINE AT THE LEVEL OF THE BOTTOM OF THE U.

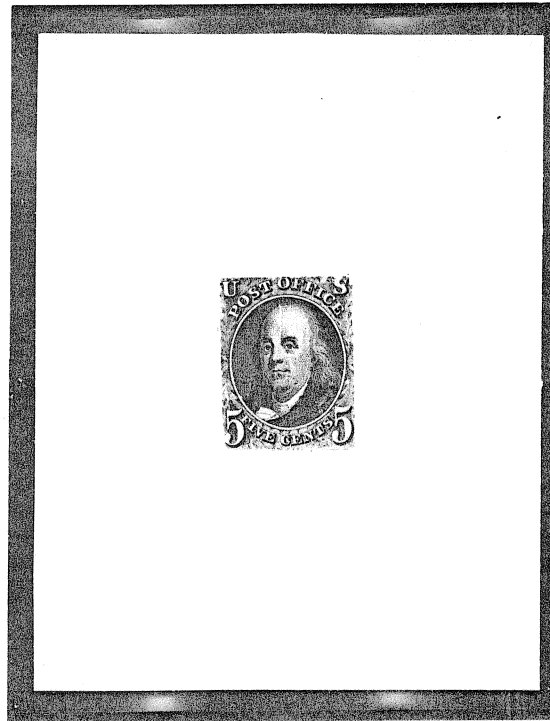
ALL MULTIPLES, OF COURSE, ARE, BY DEFINITION, PLATE PROOFS



THIS BLOCK OF 12 WAS CUT AFTER THE EMERSON SALE IN 1946. IT IS CURRENTLY THE SECOND LARGEST KNOWN.

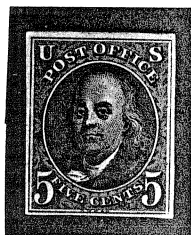
PLATE PROOFS ARE KNOWN ONLY ON INDIA PAPER (ON CARD)

HYBRID PLATE PROOF ON CARD

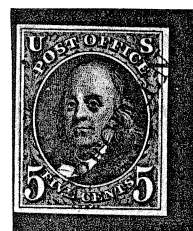
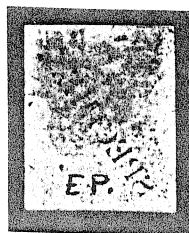
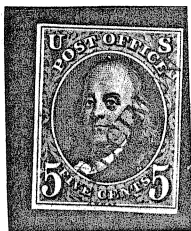


CUT INSIDE FRAME LINE
MOUNTED & DIE SUNK
DIRECTLY ON CARD TO
SIMULATE DIE PROOF

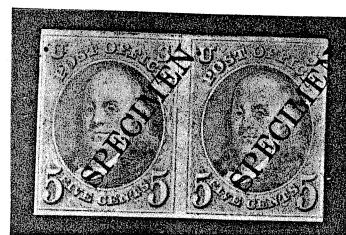
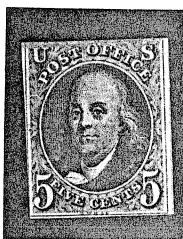
PLATE PROOFS (INDIA ON CARD) OF THE 1847 ISSUE
 WITH AND WITHOUT SPECIMEN OVERPRINT
 IN 3 TRIAL COLORS: BLACK, BROWN, ORANGE
 THE FIVE CENT ISSUE



TOP SHEET MARGIN - POSITION 4 TO 7
 PROBABLY LEFT PANE



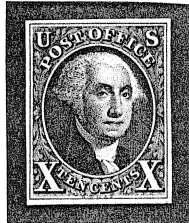
ON BACK HAS RED SPECIMEN
 OFFSET PRINT (PHOTO)



ACCORDING TO BRAZER PLATE PROOFS WERE ISSUED IN THREE COLORS (BLACK, BROWN, ORANGE). ONLY ONE SHEET (200) OF EACH DENOMINATION AND EACH COLOR ONE WITH AND ONE WITHOUT SPECIMEN OVERPRINT CAME INTO PHILATELIC HANDS. SINCE, HOWEVER, NO PROOF OF THE SAME PLATE POSITION HAS BEEN FOUND WITH AND WITHOUT OVERPRINT (BURROUGHS) IT MAY BE THAT ONLY THREE SHEETS HAVE BEEN FOUND PER DENOMINATION. THIS WOULD IMPLY THAT ONLY PART OF EACH SHEET WAS OVERPRINTED.

PLATE PROOFS (INDIA ON CARD) OF THE 1847 ISSUE
 WITH AND WITHOUT SPECIMEN OVERPRINT
 IN 3 TRIAL COLORS: BLACK, BROWN, ORANGE
 THE TEN CENT ISSUE

BLACK

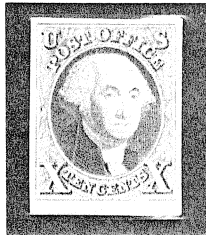


POS 73L
 SHORT
 TRANSFER

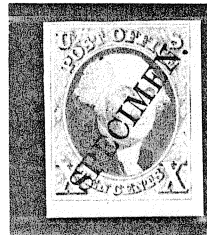


POS 10L

POS 83L



POS. 92R



POS. 100R

ORANGE



POS 23-26 R

PLATE PROOFS WITHOUT
 SPECIMEN OVERPRINT ARE
 SIGNIFICANTLY SCARCER,
 PARTICULARLY AS MULTIPLES.

BROWN



THIS WOULD TEND TO SUPPORT
 THE THEORY THAT ONLY ONE
 SHEET OF EACH COLOR WAS
 FOUND, PARTIALLY OVER-
 PRINTED.

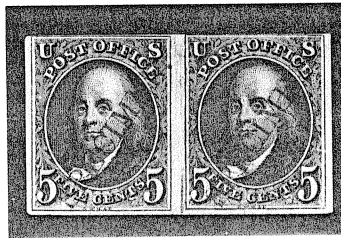
THE TEN CENT PLATE PROOF CAN FREQUENTLY BE PLATED. PLATE VARIETIES
 FOUND ON THE STAMP CAN BE FOUND ON THE PLATE PROOFS. EXAMPLE ON
 THIS PAGE: SHORT TRANSFER.

PLATE VARIETIES (DOUBLE TRANSFERS) FOUND ON 1847 PLATE PROOFS

BOTH THESE PLATE PROOFS ARE OVERPRINTED SPECIMEN IN RED. SINCE ONLY ONE SUCH TRANSFER OCCURS ON EACH PLATE, AND SINCE "NO DUPLICATION HAS BEEN FOUND IN PROOFS OR SPECIMEN PROOFS OF THE SAME COLOR" (BURROUGHS) THESE PROOFS ARE LIKELY TO BE UNIQUE. THEY HAVE BEEN DISCUSSED IN THE PHILATELIC LITERATURE ONLY IN 1996

POS 89R POS 90R

PHILATELIC FOUNDATION
CERTIFICATE # 295396



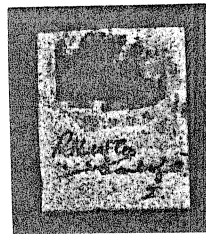
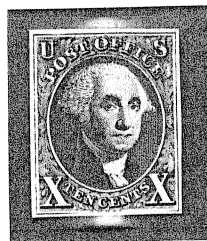
DOUBLE TRANSFER
TOP + BOTTOM
FRAME LINE (B)

BLACK ON INDIA

POS 31R

DOUBLE TRANSFER
POST OFFICE (B)

PHILATELIC FOUNDATION
CERTIFICATE # 248687



ON REVERSE:
R.H.W.CO (WEILL)
EARL OF C.

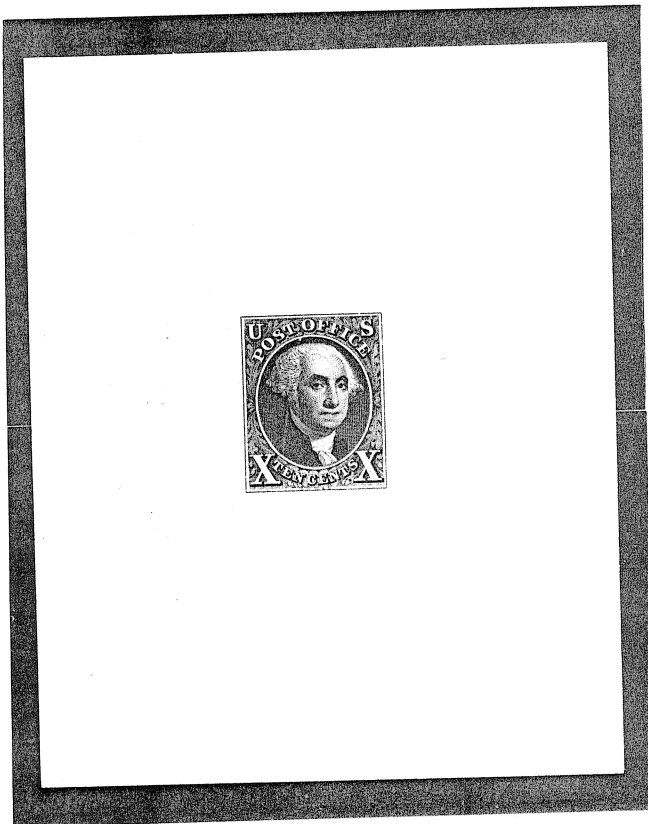
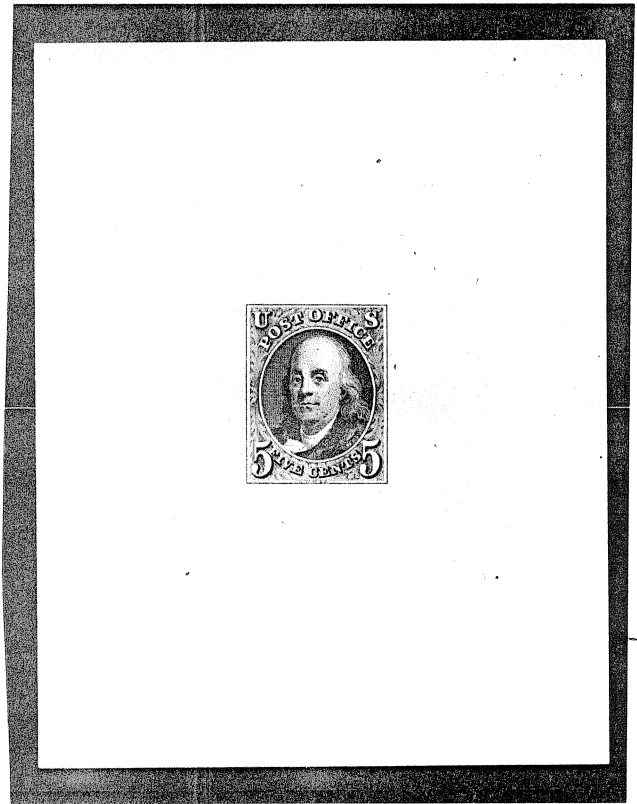
THE FIVE CENT PROOF IS OF PHILATELIC INTEREST ASIDE FROM ITS UNIQUENESS. IN THE 150 YEARS OF THEIR EXISTENCE NO OTHER DOUBLE TRANSFER HAS BEEN FOUND ON 1847 PLATE PROOFS. ON STAMPS TYPES A AND B ARE FAR LESS SCARCE THAN TYPES C,D,OR F. IT HAS BEEN SUGGESTED BY ASHBROOK THAT THIS RELATIVE SCARCITY IS DUE TO THE FACT THAT THE FIVE CENT PLATE WAS REWORKED LATE IN 1850 RESULTING IN THE CREATION OF TYPES C,D,AND F WHICH APPEAR ONLY ON STAMPS FROM THE LAST OF THE FIVE PRINTINGS, IDENTIFIABLE FROM PRINTING CHARACTERISTICS. THERE IS NO EVIDENCE OF PLATE PROOFS HAVING BEEN MADE FROM THE REWORKED PLATE.

THE TEN CENT TYPE B DOUBLE TRANSFER IS THE MOST DRAMATIC ONE DESCRIBED FOR THE 1847 ISSUE. SINCE IT CONSISTS OF DOUBLING OF THE LINES IN U,S,POST OFFICE ABOVE THE VIGNETTE.IT IS FREQUENTLY REFERRED TO AS THE "MAJOR" DOUBLE TRANSFER. THIS PARTICULAR PROOF HAS SOME NOTATIONS IN PENCIL ON THE BACK INDICATING ITS PROVENANCE FROM THE EARL OF CRAWFORD'S COLLECTION, AS WELL AS A ONE TIME SOJOURN AT THE BROTHERS WEILL (NEW ORLEANS). IT IS FIRST DESCRIBED AS LOT 33 IN SIEGEL'S SALE # 419 (18 OCT.1972)

LARGE DIE PROOFS OF BOTH 5 AND 10 CENT 1847 ISSUES
WITHOUT CROSS HATCHING PRINTED THROUGH A CUT OUT MAT
BY THE AMERICAN BANKNOTE CO. IN ABOUT 1895 ON INDIA

DOT ON FOREHEAD & ABOVE P

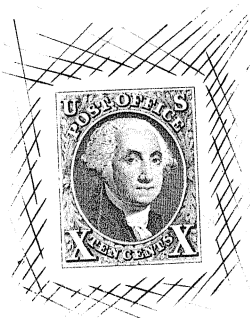
ON ALL FULLSIZED
DIE SUNK FIVE
CENT PROOFS
THE LOWER LEFT
CORNER IS CLIPPED



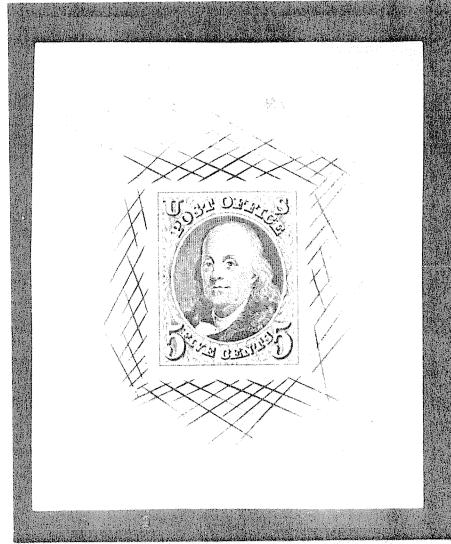
LARGE DIE PROOF OF THE 5 CENT ISSUE WITH CROSSHATCHING ON INDIA PAPER
DIE SUNK (44X56 MM) ON FULL CARDBOARD PAGE (6X9) FROM A BOOK OF PROOFS
ISSUED BY THE AMERICAN BANKNOTE CO (CIRCA 1895) FOR ITS DIRECTORS.
NOTE CLIPPED LOWER LEFT CORNER, TYPICAL OF LARGE FULL SIZED 5 CENT DIE PROOFS.



LARGE DIE PROOF OF THE 10 CENT ISSUE WITH CROSSHATCHING ON INDIA PAPER
DIE SUNK (44X56MM) ON FULL CARDBOARD PAGE (6x9) FROM A BOOK OF PROOFS
ISSUED BY THE AMERICAN BANKNOTE CO (CIRCA 1895) FOR ITS DIRECTORS.



LARGE DIE PROOFS (IN ISSUED COLOR) WITH CROSSHATCHING OF THE 5 CENT ISSUE ON INDIA AND BOND PAPERS MADE ABOUT 1895 BY THE AMERICAN BANKNOTE CO.

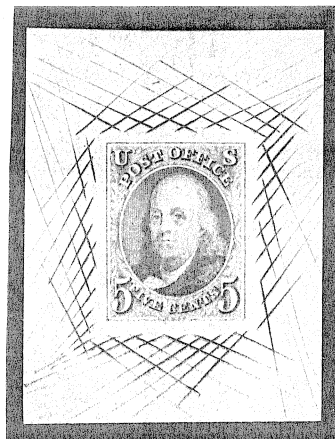


ALL SHOW PROGR.
DIE DEFCTS:
DOT ON FOREHEAD
(1858) AND ABOVE
P (1879)

DIE SUNK (43X56MM) ON INDIA



WHITE BOND



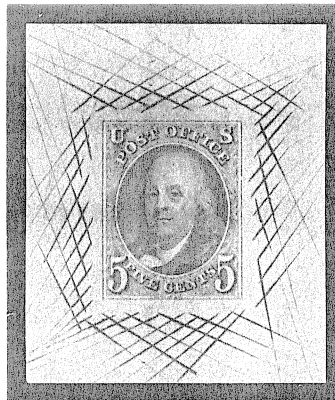
PINK BOND



ROSE BOND



GREEN BOND
WATERMARKED



GREEN BOND



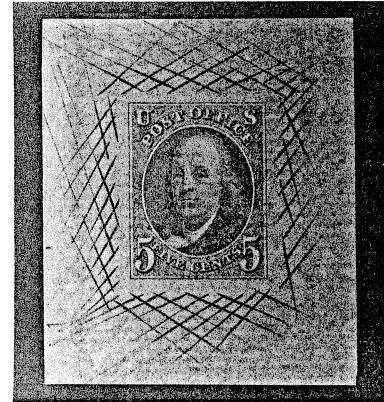
ROSE BOND
WATERMARKED

LARGE DIE PROOFS IN ISSUED COLOR WITH CROSSHATCHING
OF THE FIVE CENT ISSUE MADE ABOUT 1895 BY AM.B.CO.

LAI D AND WOVE
PAPERS



WHITE LAID



L.L. BROWN
PAPER CO.
ADAMS, MA.

ALL LARGE 5 CENT DIE PROOFS
SHOW PROGRESSIVE DIE DEFECTS
DOT ON FOREHEAD (1858)
DOT ABOVE P (1879)

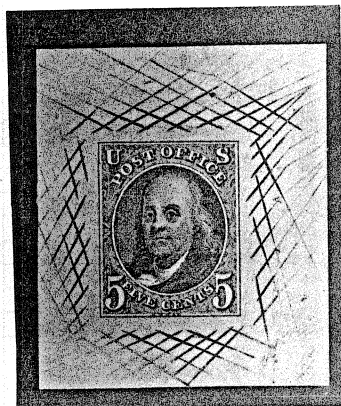


BLUISH LAID



WHITE WOVE

THE RAISED ARM
HOLDING A SCIMITAR
IS THE TRADEMARK
OF THE L.L. BROWN
PAPER CO, ADAMS, MASS.



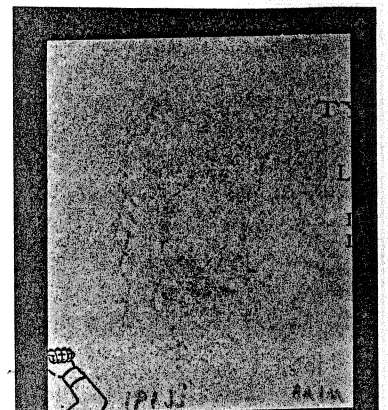
Y
E
L
L
O
W
I
S
H

W
O
V
E

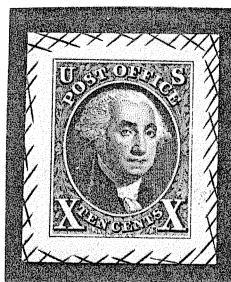
YELLOWISH

WOVE

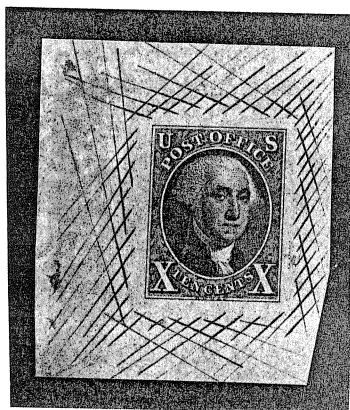
WITH
PRINTING
ON BACK



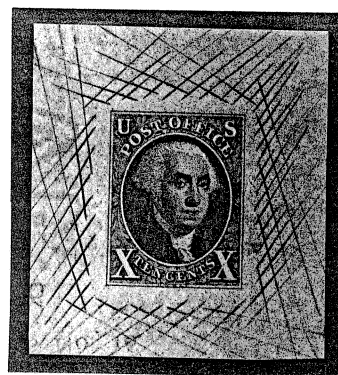
LARGE TEN CENT DIE PROOFS WITH CROSSHATCHING ON INDIA AND BOND PAPERS



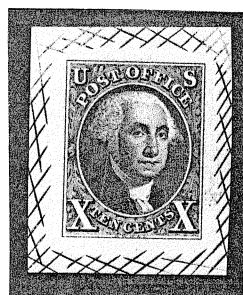
INDIA



WHITE BOND
WATERMARK
895



WHITE BOND
WATERMARK



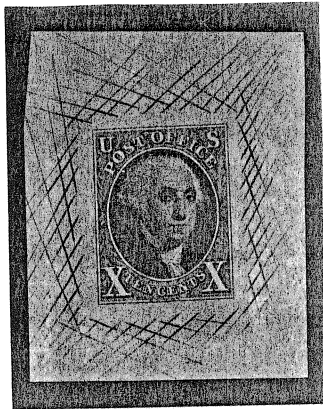
WHITE BOND

THESE DIE PROOFS WERE PRINTED BY THE AMERICAN BANKNOTE CO ON PAPERS FROM SAMPLE BOOKS SUPPLIED BY CRANE & CO OF DALTON, MASS. AND L.L. BROWN PAPER CO OF ADAMS, MASS. AND POSSIBLY OTHERS. THESE SAMPLE PAPERS WERE SOMETIMES WATERMARKED AND HAD VARIOUS IMPRINTS WHICH APPEAR IN PART ON THE BACK OF THESE PROOFS, OCCASIONALLY ON THE FRONT. THEY DATE FROM 1881 TO 1895. THE VARIETIES OF THE PAPERS ARE ILLUSTRATED ON THE FOLLOWING PAGES.

LARGE TEN CENT DIE PROOFS ON COLORED BOND PAPER
SOME WATERMARKED, SOME WITH PRINTING ON BACK



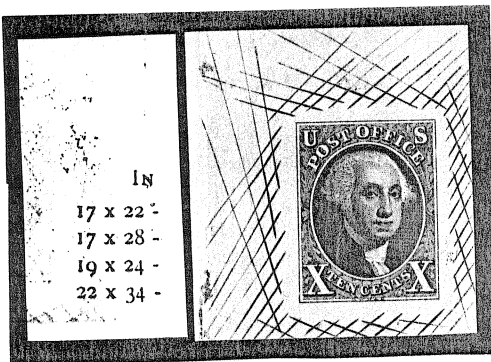
YELLOW BOND
WATERMARKED



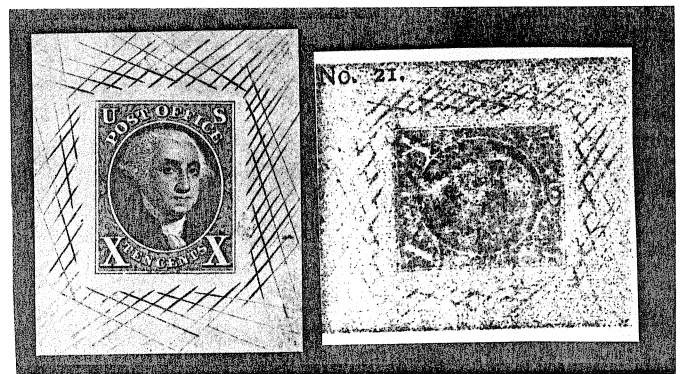
BLUE BOND



ROSE BOND
WATERMARK



CREAM BOND WITH IMPRINT
ON BACK



PINK BOND WITH IMPRINT ON BACK

LARGE TEN CENT DIE PROOFS WITH AND WITHOUT CROSSHATCHING ON WOVE AND LAID PAPERS ABOUT 1895.



WHITE WOVE
PRINTING
ON BACK

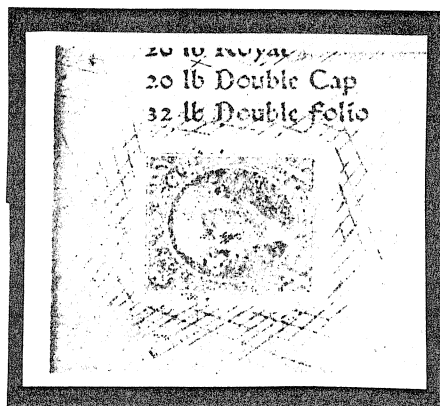
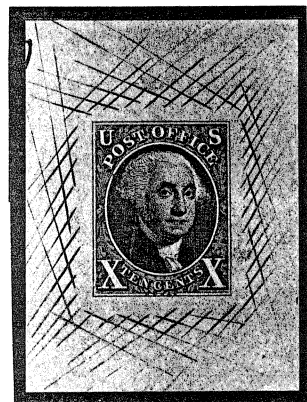
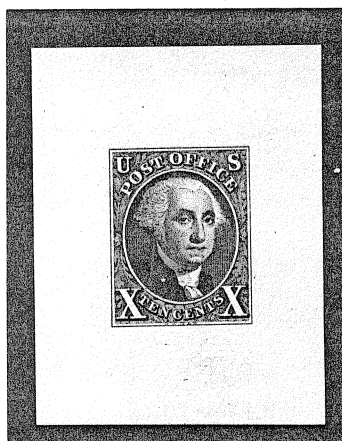


PHOTO OF
IMPRINT

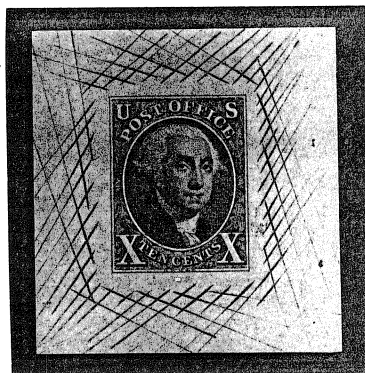


WHITE WOVE
PRINTING
IN FRONT

WITHOUT CROSSHATCHING

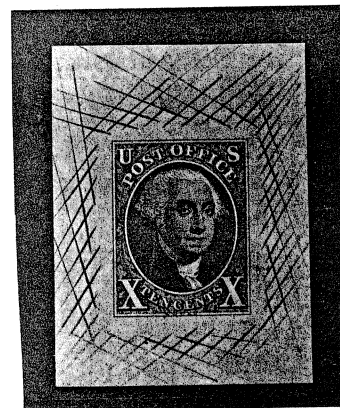


PRINTED THROUGH A
CUT OUT MASK ON
WHITE WOVE PAPER



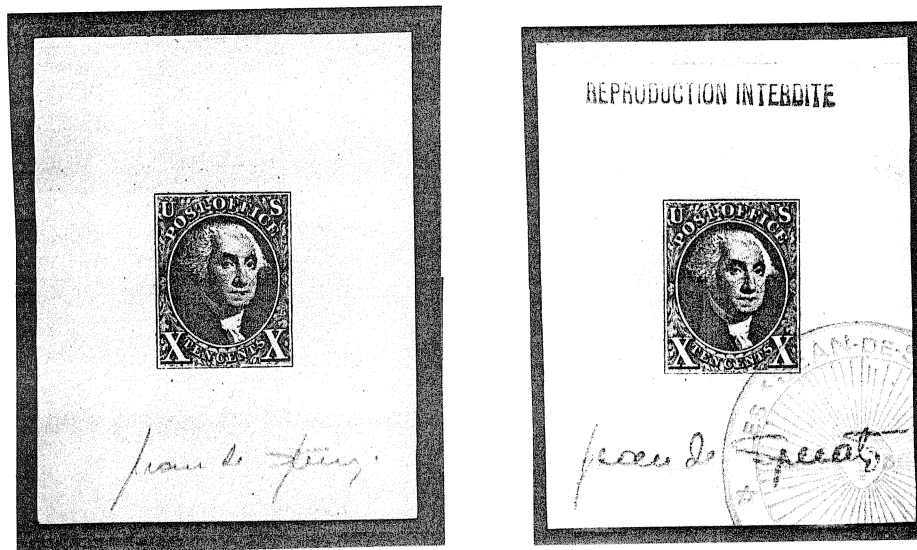
WHITE LAID

THE PROOFS ON BLUISH LAID PAPER CUT TO STAMP SIZE FIRST APPEARED IN 1897. THEY WERE LISTED IN SCOTT'S CATALOGUE FROM 1900 TO 1904 AS UNUSED STAMPS UNTIL THESE LARGE DIE PROOFS BECAME KNOWN.



BLUISH LAID

THE 1847 DIE PROOF INSPIRES THE KING OF COUNTERFEITERS



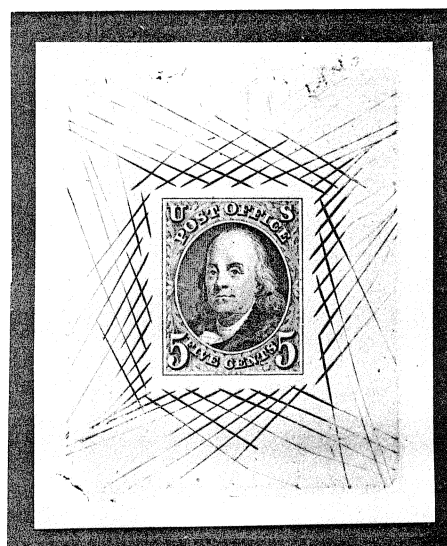
BOTH THESE SPERATI FORGERIES ARE SIGNED. IN ADDITION THE ONE ON THE RIGHT IS CANCELLED WITH HIS YELLOW SEAL BEARING HIS NAME, AND TO ADD TO HIS EFFRONTERY BEARS A BLUE STAMP AT THE TOP FORBIDDING REPRODUCTION!

MANY OF JEAN DE SPERATI'S FORGERIES WERE OF SUCH HIGH QUALITY THAT THEY LANDED IN FAMOUS COLLECTIONS. HE WAS SO PROUD OF HIS ACHIEVEMENTS THAT HE HAD A BOOK PUBLISHED IN 1946, CONTAINING ILLUSTRATIONS OF HIS "ART", SOME OF WHICH HE SIGNED.

EXAMPLES OF HIS CREATIONS APPEAR IN PHILATELIC AUCTION CATALOGUES AND BRING HIGH PRICES. THE TEN CENT 1847 ISSUE, BOTH THE STAMP AND THE DIE PROOF WAS ONE OF SPERATI'S FAVORITES.

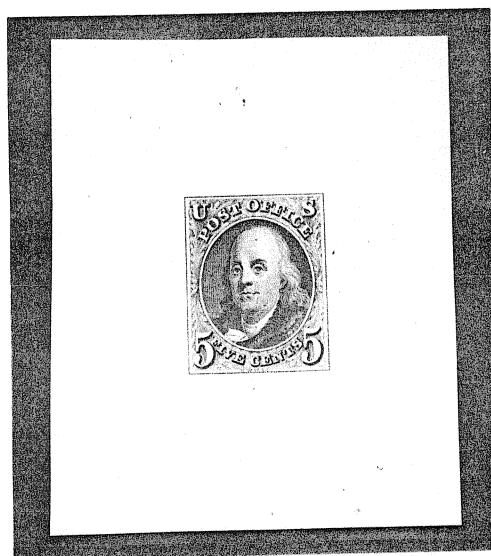
LARGE TRIAL COLOR DIE PROOFS ON INDIA
DIE SUNK (43X56MM) ON CARD PRINTED
ABOUT 1895 BY AMERICAN BANKNOTE CO.
FIVE CENT PROOFS HAVE DOTS ON
FOREHEAD AND ABOVE P.

THREE SHADES OF GREEN



DARK GREEN

FROM BOOKS
OF PROOFS
FOR ABN CO
DIRECTORS

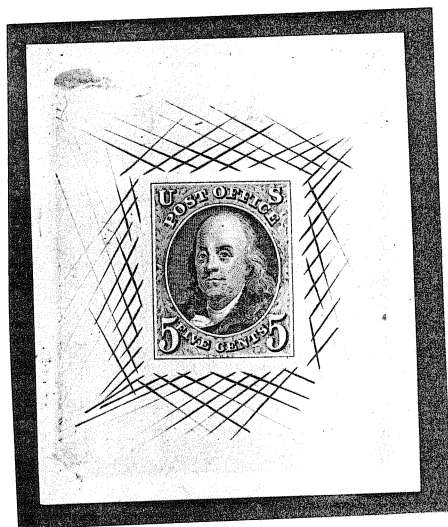


BLUE GREEN

ALBINO

CROSSHATCHING

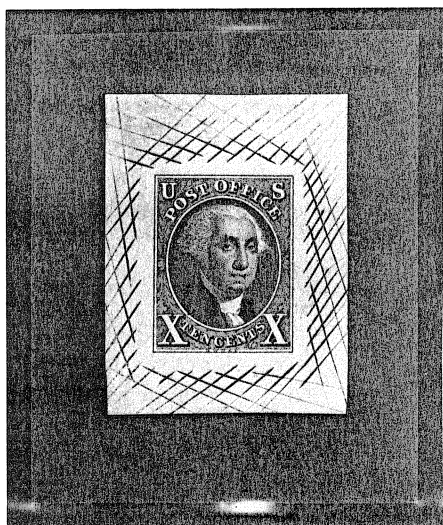
EMBOSSSED



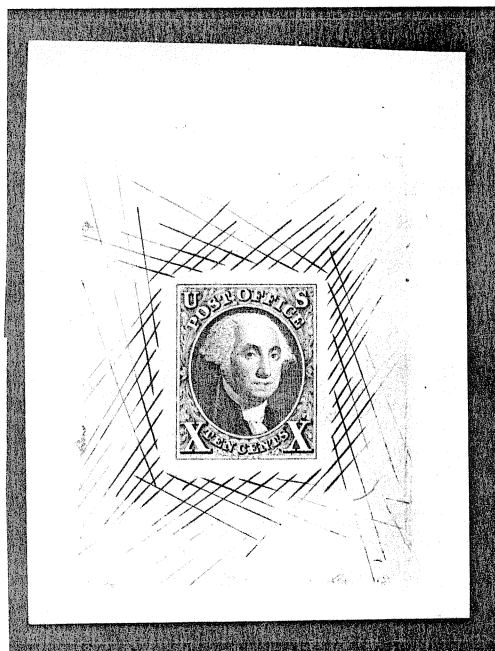
DULL GREEN

PROOFS NOT SHOWING CROSSHATCHING
WERE PRINTED THROUGH CUT OUT MATS.

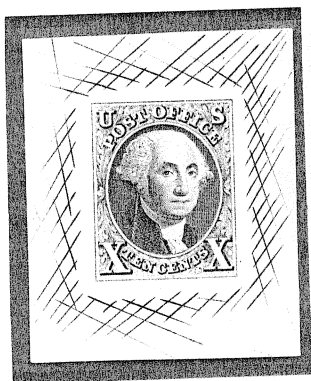
LARGE TRIAL COLOR DIE PROOFS
ON INDIA DIE SUNK (43X56MM)
ON CARD ABOUT 1895 BY ABN CO.



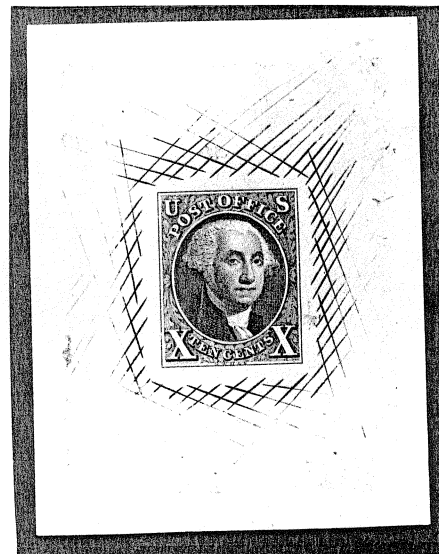
VERY DARK GREEN



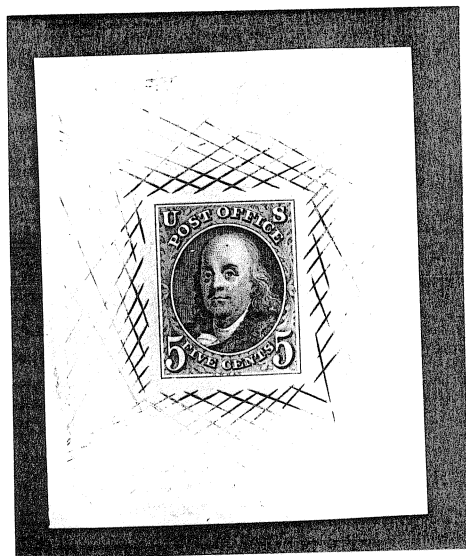
DARK GREEN



LIGHTER SHADE



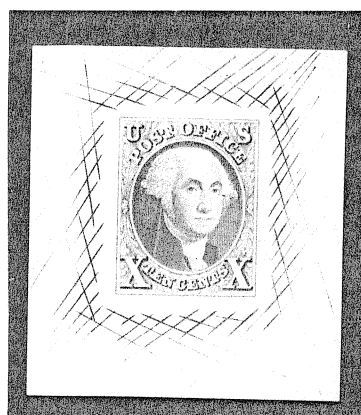
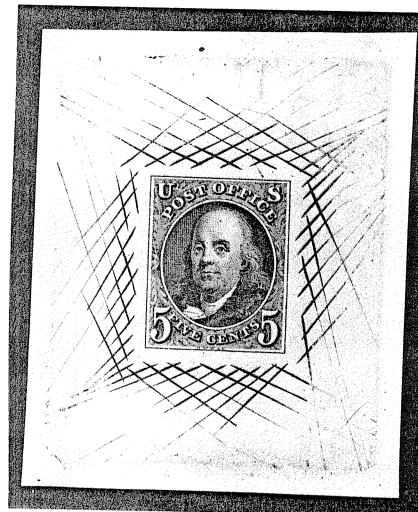
DEEP BLUE



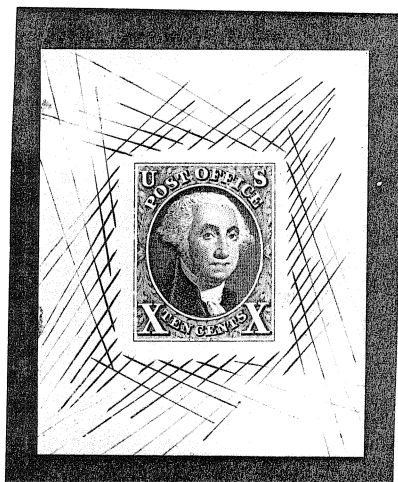
DEEP BLUE

5 CENT PROOFS HAVE DOTS
ON FOREHEAD AND ABOVE P.

LARGE TRIAL COLOR DIE PROOFS ON INDIA
DIE SUNK (43X56) ON CARD PRINTED WITH
CROSSHATCHING ABOUT 1895 BY AMERICAN
BANKNOTE CO. FIVE CENT PROOFS HAVE
DOTS ON FOREHEAD AND ABOVE P.

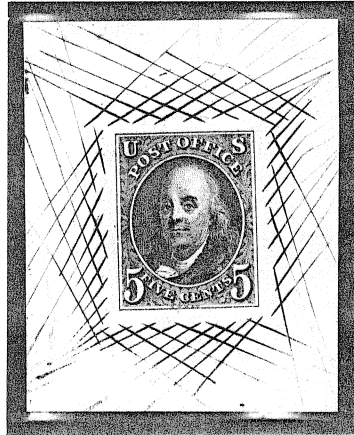


LIGHT SHADE

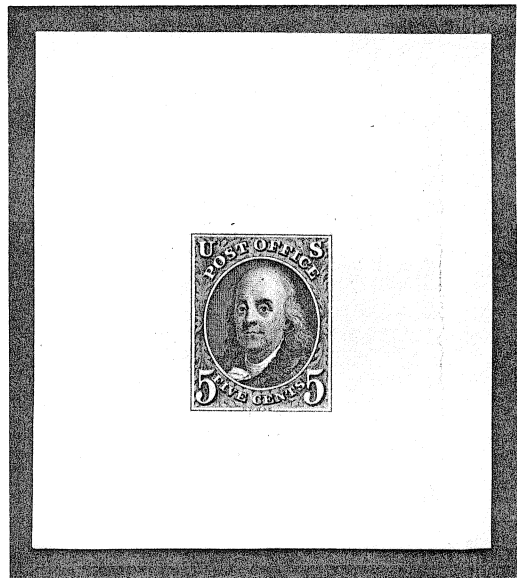


ROSE LAKE SHADES

LARGE TRIAL COLOR DIE PROOFS ON INDIA ON CARD PRINTED
ABOUT 1895 BY AMERICAN BANKNOTE CO.



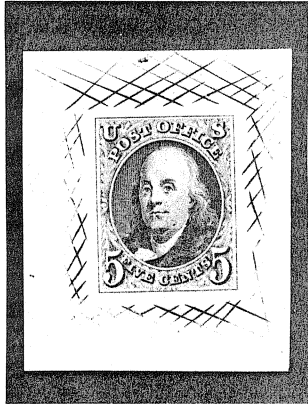
BLACK WITH
CROSSHATCHING
NOT DIE SUNK



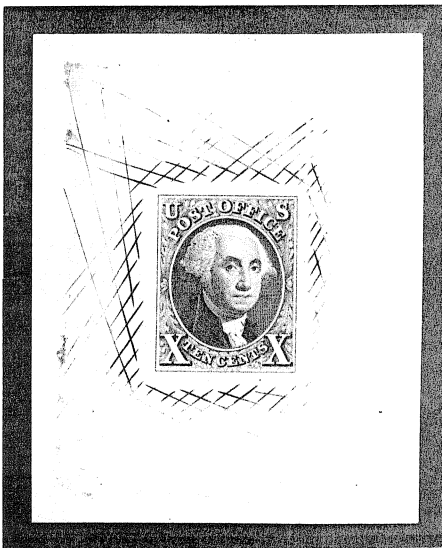
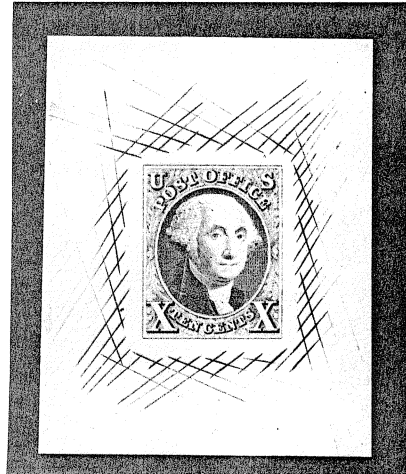
BLACK- ALBINO CROSSHATCHING
EMBOSSSED ON PAPER - FROM BOOK
OF PROOFS FOR ABN CO DIRECTORS

ALL LARGE DIE FIVE CENT PROOFS SHOW THE PROGRESSIVE DIE DEFECTS
LIKE, DOT ON FOREHEAB AND ABOVE P

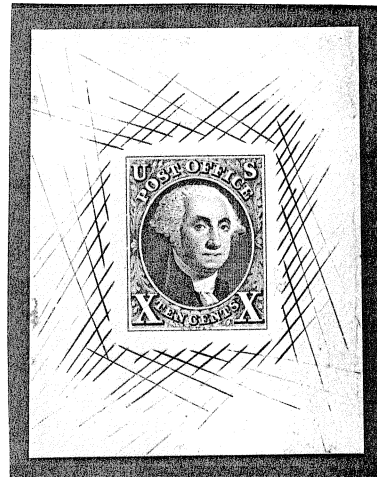
LARGE TRIAL COLOR DIE PROOFS ON INDIA PRINTED ABOUT 1895 BY AMERICAN BANKNOTE CO. FIVE CENT PROOFS HAVE DOT ON FOREHEAD AND ABOVE P. AND ABOVE P.



VIOLET

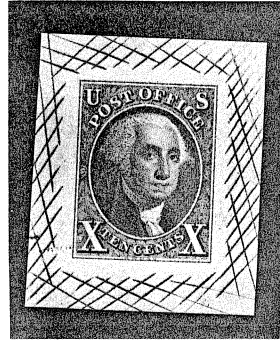


LIGHT BROWN

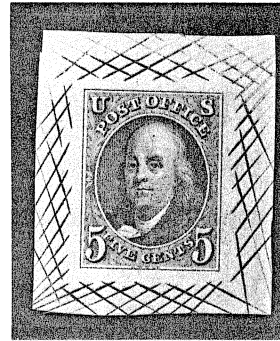


DARK BROWN

LARGE DIE TRIAL COLOR PROOFS WITH CROSSHATCHING ON BOND (11) AND WOVE (4)



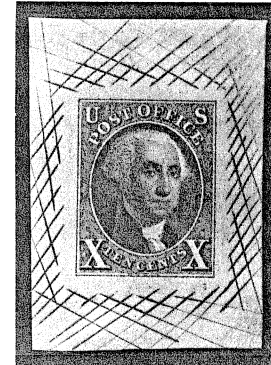
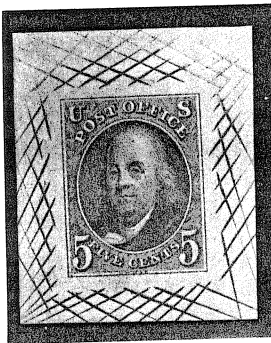
BOND



DEEP BLUE

BLUE GREEN

BOND

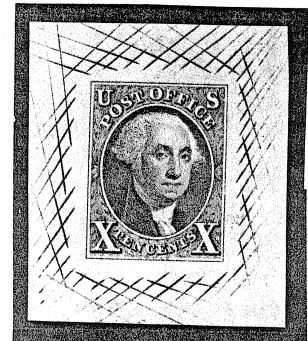
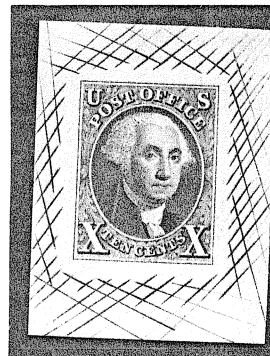


ORANGE VERMILLION

SCARLET VERMILLION
ON PINK BOND

ORANGE VERMILLION

BOND

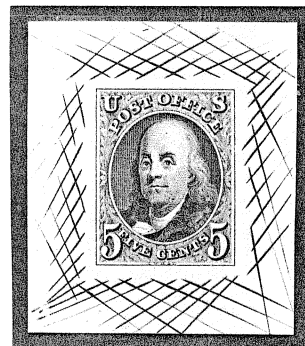
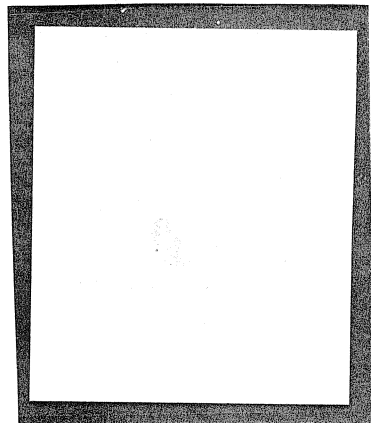
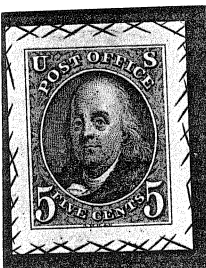


BLACK

BLACK BROWN

GOLDEN BROWN

WOVE



BLACK BROWN

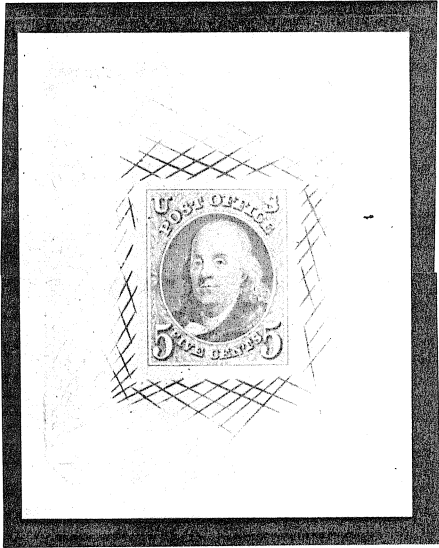
DULL YELLOW

DEEP BLUE

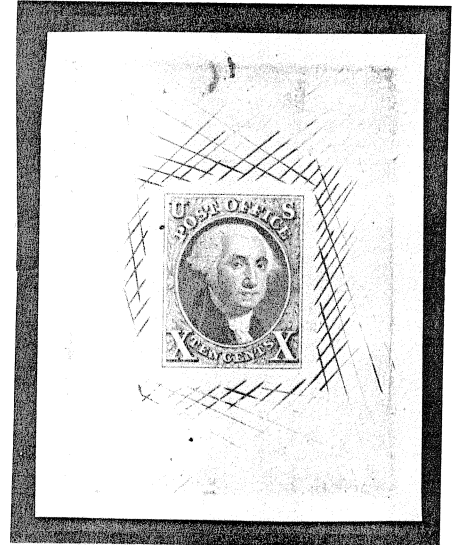
GRAY BLACK

THESE PROOFS WERE PRINTED BY THE AMERICAN BANKNOTE CO IN 1895 ON SAMPLE PAPER MADE BY L.L.BROWN CO AND CRANE CO WITH DATED WATERMARKS AND AND PRINTED LOGOS WHICH, OCCASIONALLY, CAN BE PARTIALLY SEEN ON THESE PROOFS.

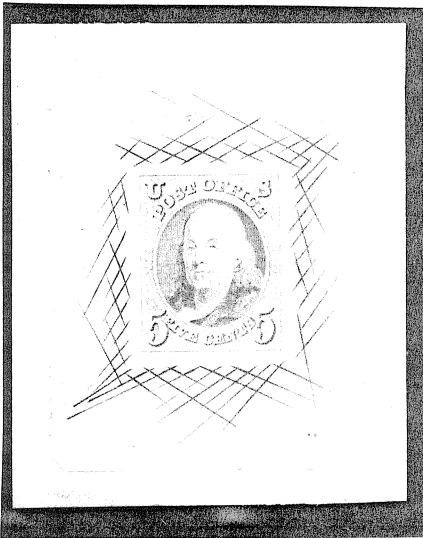
BOOKS CONTAINING THESE PROOFS AS WELL AS PROOFS OF LATER ISSUES WERE DISTRIBUTED TO THE DIRECTORS OF THE COMPANY AND OTHER DIGNITARIES.



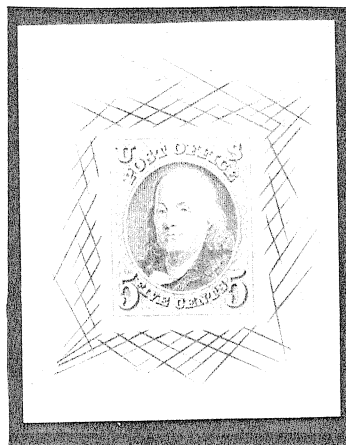
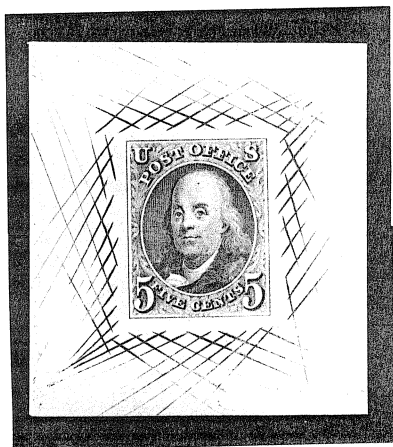
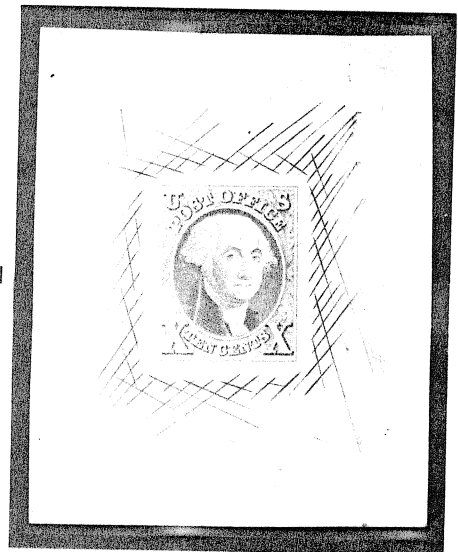
ORANGE YELLOW



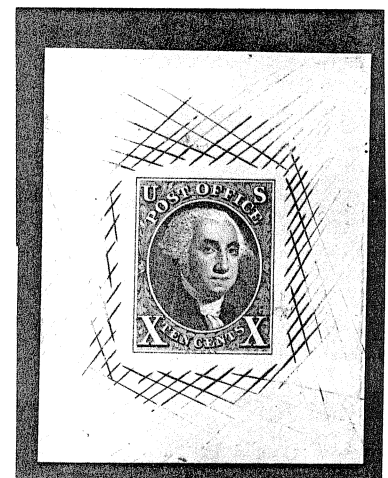
DIE SUNK (43X56MM)



ORANGE VERMILLION

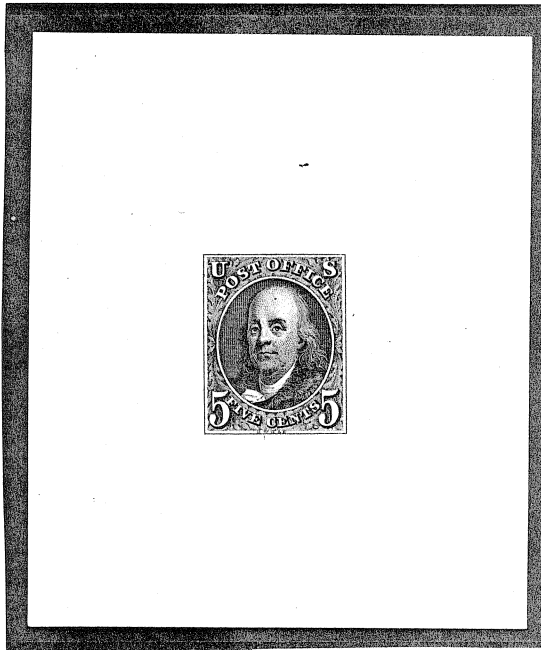


SCARLET VERMILLION

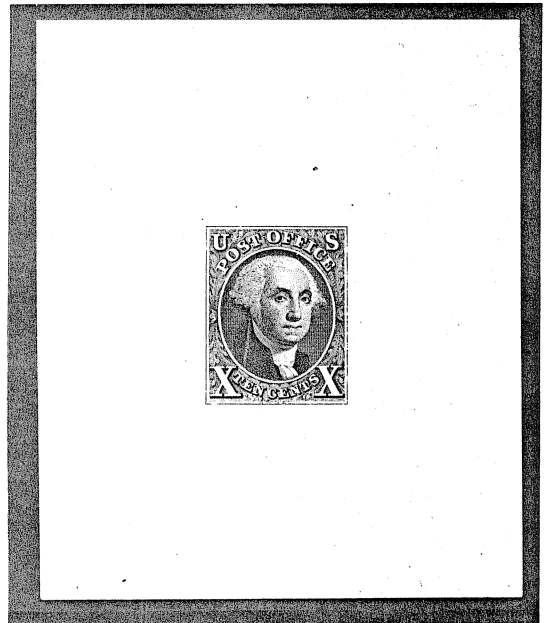


ALL PROOFS ON THIS PAGE ARE ON INDIA PAPER

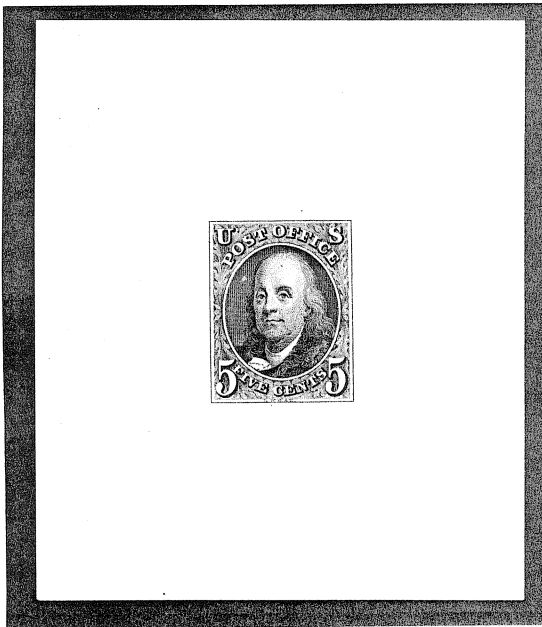
LARGE DIE PROOFS (1 ISSUED COLOR, 3 TRIAL COLORS) ON GLAZED PAPER.



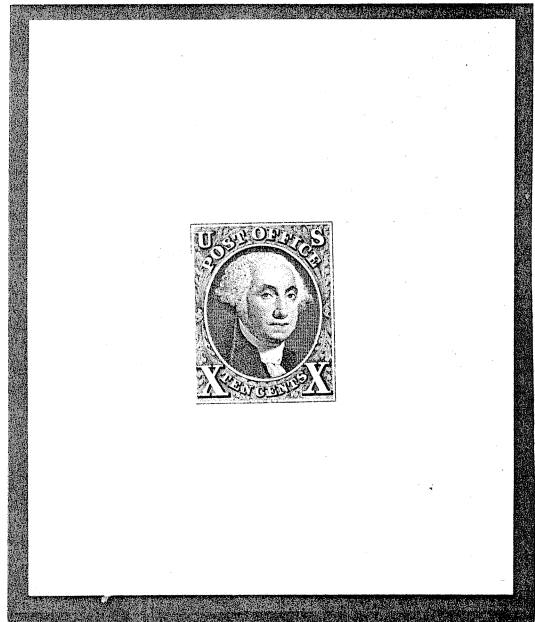
BLACK



THE FAINT DIE SINKING MARK IS 43X56 MM

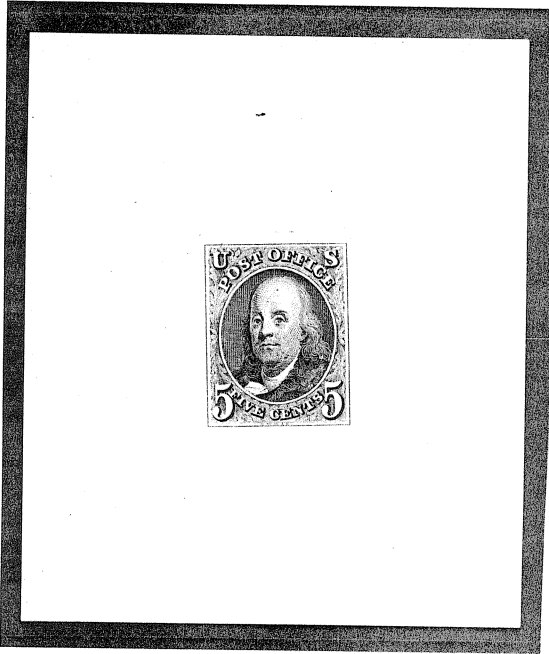


BLACK
BROWN

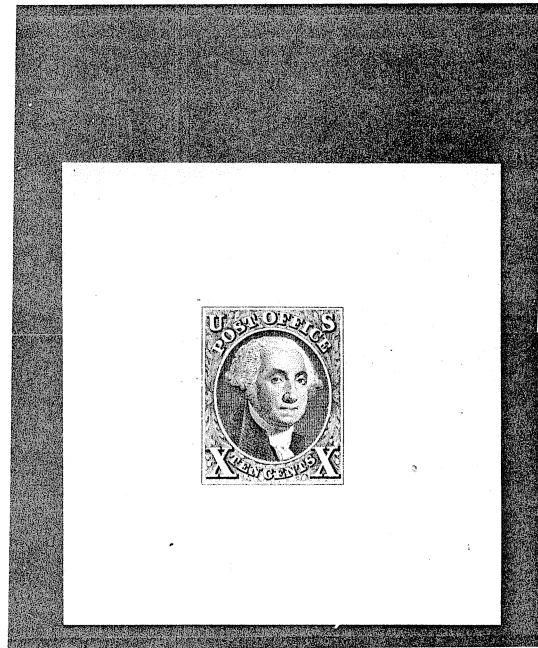


THESE PROOFS (64X76 MM) WERE PRINTED BY THE AMERICAN BANKNOTE CO PROBABLY BEFORE 1895 ON WHITE GLAZED PAPER WITH YELLOWISH BACK (CRANE & CO, DALTON, MASS) THROUGH A CUTOUT MAT. THE CROSSHATCHING THUS NOT INKED APPEARS IN AN ALBINO FORM FAINTLY ON THE PAPER, AS DOES THE USUAL DIE SINKING (43X56 MM). THEY APPEAR TO THE EYE ONLY WITH OBLIQUE ILLUMINATION. THESE PROOFS WERE DESTINED FOR (OR COME FROM) BOOKS OF SAMPLE PROOFS DISTRIBUTED TO DIRECTORS OF THE COMPANY OR OTHER DIRECTORS OR DIGNITARIES, ALSO POSSIBLY USED FOR SALES.

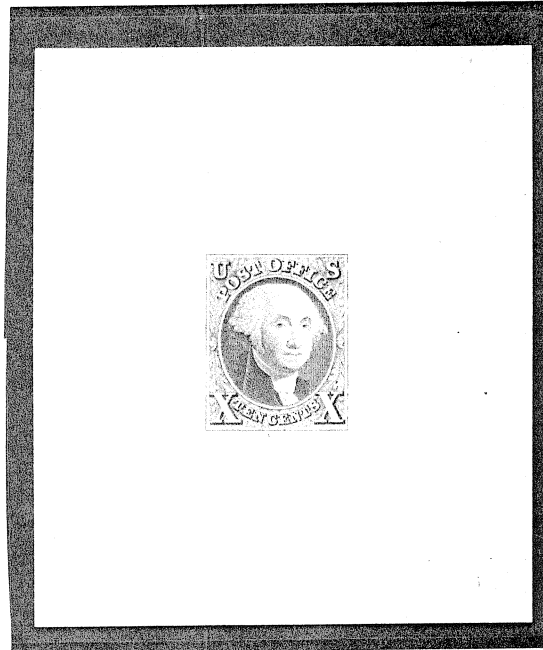
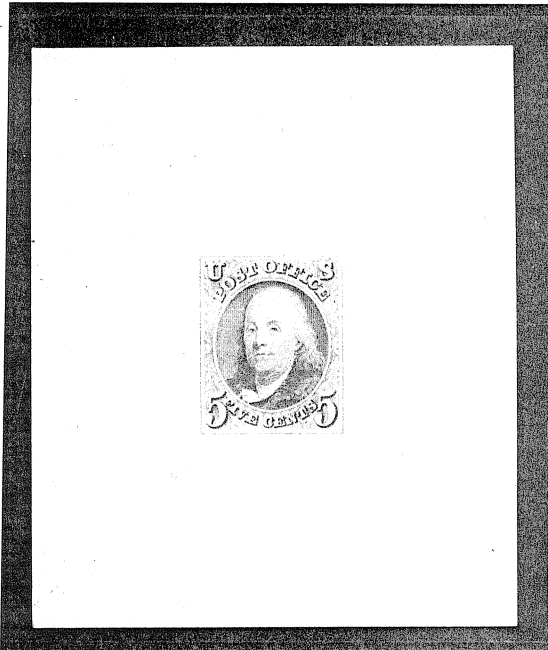
LARGE DIE TRIAL COLOR PROOFS WITH FAINT ALBINO CROSSHATCHING PRINTED BY THE AMERICAN BANKNOTE CO ON WHITE GLAZED PAPER WITH YELLOWISH BACK (CRANE & CO, DALTON, MASS) THROUGH A CUT OUT MAT, BEFORE 1895.



DEEP
ULTRA



DEEP
BLUE



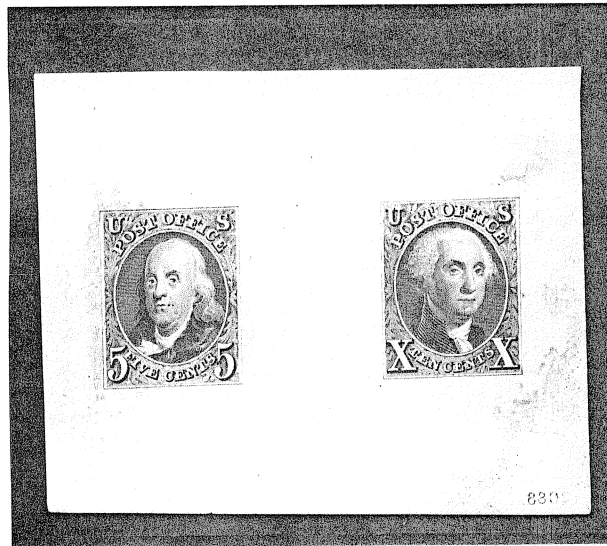
SCARLET VERMILLION

IN ADDITION TO THE FAINT CROSSHATCHING OBLIQUE ILLUMINATION ALSO SHOWS THE USUAL DIE SINKING (43X56 MM). THESE PROOFS WERE DESTINED FOR (OR COME FROM) BOOKS OF SAMPLE PROOFS DISTRIBUTED TO DIRECTORS OF THE COMPANY.

1875 REPRODUCTION ISSUE

IN 1875 THE POST OFFICE DEPARTMENT ORDERED REPRODUCTIONS OF THE 1847 ISSUE FROM THE BUREAU OF ENGRAVING AND PRINTING AS PART OF A DISPLAY OF ALL POSTAL ISSUES TO DATE AT THE CENTENNIAL PHILADELPHIA EXHIBITION IN 1876. A COMPOSITE DIE (# 2088) OF BOTH 5 AND 10 CENT DENOMINATIONS WAS ENGRAVED AND 5¢ (11450) AND 10¢ (10000) STAMPS PRINTED (BUREAU CHIEF REPORT 1875).

COMPOSITE LARGE DIE TRIAL COLOR PROOF (GREEN).

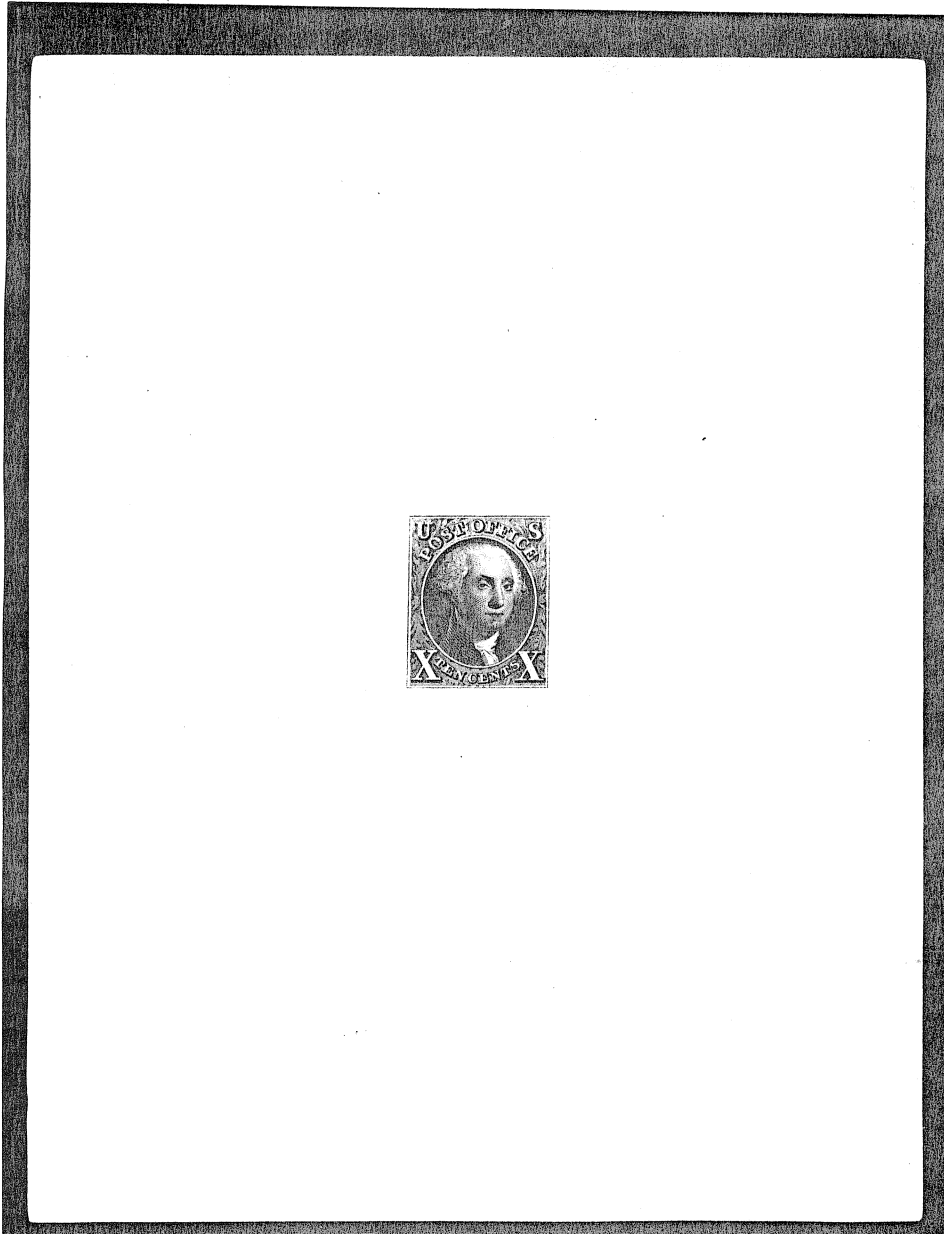


ACCORDING TO BRAZER ONLY TWO COMPOSITE DIE PROOFS IN GREEN EXIST. THE OTHER IS ILLUSTRATED BY PHOTO. THIS PROOF INCLUDES THE DIE NUMBER 2088 BELOW THE TEN CENT PROOF. THIS NUMBER IS PRINTED IN REVERSE. THIS COMPOSITE PROOF MAY WELL HAVE BEEN A TRIAL COPY OF THE OTHER PROOF, WHICH WAS SIGNED BY CHARLES SKINNER.

A COMPOSITE DIE PROOF IN BLACK ALSO EXISTS.

HYBRID PLATE PROOF 1875 REPRODUCTION TEN CENT ISSUE

THIS IS A TEN CENT REPRODUCTION PLATE PROOF ON INDIA MOUNTED ON INDIA PAPER SUNK ON CARD, TO LOOK LIKE A DIE PROOF. IT IS ANNOTATED IN PENCIL: "WORKED OVER BY CHARLES SKINNER". WHO WAS AN ENGRAVER (PORTRAIT) FOR THE CONTINENTAL BANKNOTE CO IN NY.

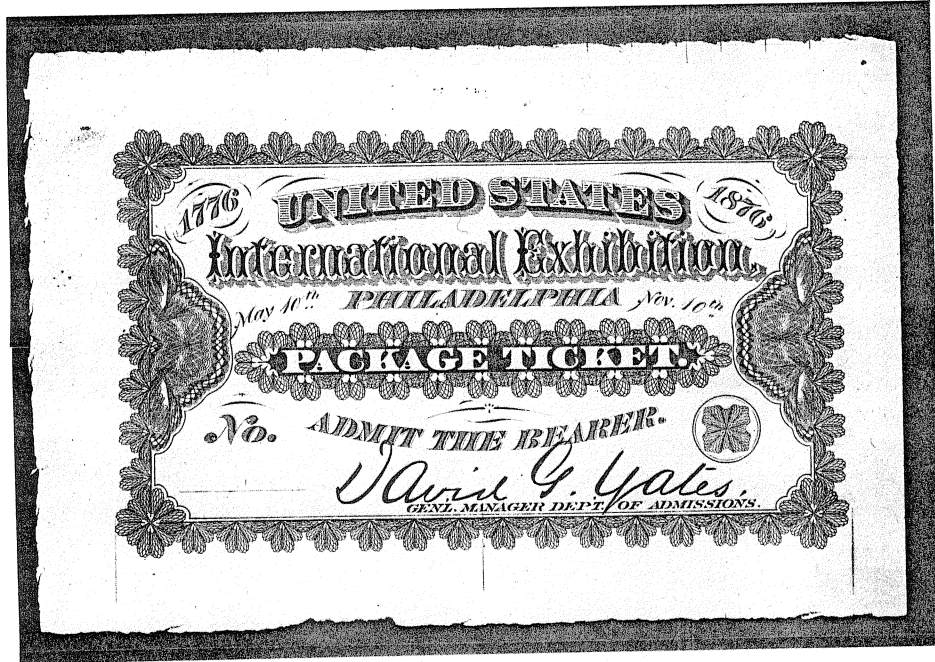


PHILATELIC FOUNDATION
CERTIFICATE # 142561

EX BRAZER COLL
SALE JAN. 1956

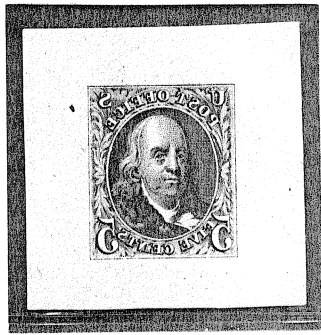
THERE WAS A CORRESPONDING HYBRID PROOF OF THE FIVE CENT ISSUE IN THE BRAZER COLLECTION ANNOTATED IN PENCIL "RE-ENGRAVED BY C. BURT/McCOY" AND "RE-ENGRAVED DIE WORKED OVER BY CHARLES SKINNER". BURT (PORTRAIT) AND McCOY (FRAME) WORKED FOR THE BUREAU, AND APPEAR TO BE THE ORIGINAL ENGRAVERS OF BOTH HALVES OF DIE # 2088.

ADMISSION TICKET TO THE INTERNATIONAL EXHIBITION AT PHILADELPHIA 1876
THE CELEBRATION OF THE CENTENNIAL OF THE AMERICAN REVOLUTION WAS THE
REASON FOR THE ISSUE OF THE 1847 ISSUE REPRODUCTIONS



LARGE DIE PROOFS ON INDIA OF TICKETS TO THE 1876 CENTENNIAL EXHIBITION
AT PHILADELPHIA (OBVERSE & REVERSE)

REVERSE DIE ENGRAVINGS , POSSIBLY ESSAYS FOR THE 1875 REPRODUCTIONS



THE ORIGIN OF THESE TWO REVERSE DIE PROOFS IS A MYSTERY. THE WOVE PAPER ON WHICH THEY ARE PRINTED IS CONSISTENT WITH A DATE FROM THE 1870'S AT THE EARLIEST. IN A RECENT ARTICLE (1996) BRETT PRESENTS A DETAILED DESCRIPTION OF THESE PROOFS BUT IS UNABLE TO RESOLVE THEIR MYSTERY. THEY REPRESENT AN INTERESTING, REVERSED VARIANT OF THE 1847 DESIGN, CLOSER TO THE 1875 REPRODUCTIONS, ALTHOUGH NOT IDENTICAL WITH THEM. THE REASON FOR EXECUTING REVERSE DIES IS UNCLEAR. WHILE IT IS POSSIBLE THAT THEY WERE INTENDED AS SOME FORM OF ESSAY THIS IS FAR FROM EVIDENT. THEY ARE PROBABLY BEST LISTED AS A PHILATELIC CURIOSITY, AS YET UNEXPLAINED

HYBRID PROOFS

THESE ARE PLATE PROOFS
ON INDIA PAPER CUT TO
THE FRAME LINE, MOUNTED
AND PRESSED ONTO INDIA
PAPER AND THEN ONTO
CARDBOARD TO RESEMBLE
DIE PROOFS.
THEY WERE USED IN BOOKS
FOR SALESMEN TO SHOW
SAMPLES OF THE PRINTER'S
WORK.



THESE PROOFS WERE PROBABLY
PRINTED IN 1894 AFTER THE
CARDBOARD PROOFS. THEY SHOW
RECUOT FRAME LINES AND SCRATCHES.

SMALL DIE PROOFS FROM THE 1875 REPRODUCTION DIES

"ROOSEVELT" SMALL DIE PROOFS ON WHITE, SOFT, FIBROUS WOVE PAPER WERE PRINTED BY THE BUREAU OF ENGRAVING AND PRINTING IN 1902. IN ORDER TO ILLUSTRATE ALL THE U.S. STAMPS TO DATE. SINCE 1847 DIES WERE NOT AVAILABLE 1875 REPRODUCTION DIES WERE USED TO ILLUSTRATE BOTH SETS. THE SET LABELED 1847 CONSIST OF CLEAR BUT DARKER PRINTS. THOSE LABELED 1876 ARE FREQUENTLY SLURRED OR SLURRED PRINTS AND OF A DIFFERENT SHADE (REDDER FOR THE 5 CENT, LIGHTER FOR THE 10 CENT).

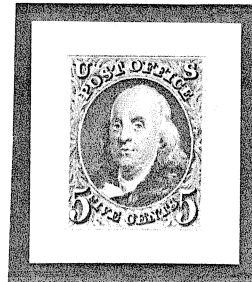


1847 SHADES

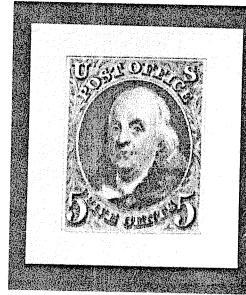


CLEAR PRINTS

BROWNER

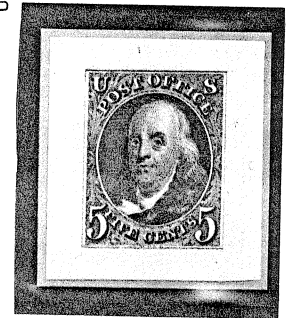


CLEAR PRINT
REDDISH



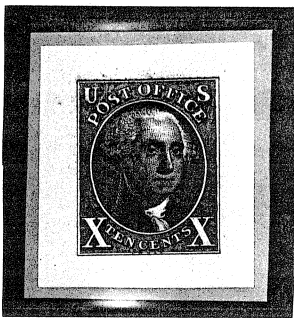
SLURRED PRINTS

REDDER



1876 SHADES

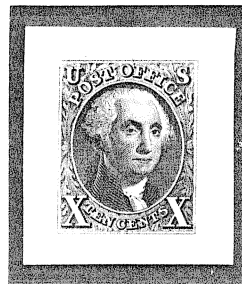
THE EXISTENCE OF A NUMBER OF THESE PROOFS WHICH WERE NOT MOUNTED ON GRAY PAPER SUGGESTS THAT MORE THAN 85 SETS WERE PRINTED. THE EXACT NUMBER IS UNKNOWN



DARKER

ON GRAY PAPER FROM A "ROOSEVELT" ALBUM

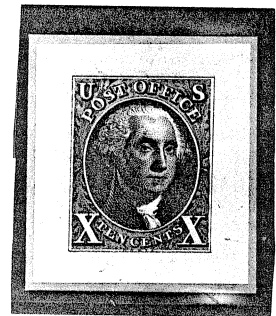
85 ISSUED



LIGHTER

1876

NO TRACE OF GRAY PAPER ON BACK OF DIE PROOFS.



LIGHTER

ON GRAY PAPER FROM A "ROOSEVELT" ALBUM

85 ISSUED

THIS IS A PAGE FROM A "ROOSEVELT" BOOK (85 ISSUED IN 1902). THESE SMALL DIE PROOFS ARE MADE FROM THE 1875 REPRODUCTION DIES. THE ONES LABELED 1847 ARE PRINTED MORE CLEARLY AND IN DIFFERENT, DARKER SHADES. THEY ARE ON SOFT WHITE WOVE PAPER

CLEAR
BROWN



1847



1876



DARKER



LIGHTER

PLATE PROOFS ON CARDBOARD OF THE 1875 REPRODUCTIONS

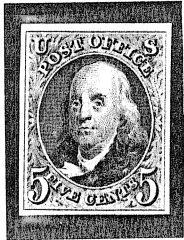
THESE CARDBOARD SETS OF PROOFS WERE ISSUED IN 5 EMISSIONS OF 500 EACH IN THE YEARS 1879, 1885, 1890, JAN. AND MAY 1893. EACH EMISSION IS CHARACTERIZED BY A SPECIFIC RANGE OF CARDBOARD THICKNESS (WITH SOME OVERLAPPING), AS WELL AS BY PRINTING AND COLOR SHADE DIFFERENCES. THEY ARE DESCRIBED BY BRAZER (1947) AND REVIEWED BY FRIEDMAN (1972).

EACH EMISSION CONSISTED OF A SET OF PROOFS OF ALL POSTAL ISSUES TODATE. THEY NUMBERED, RESPECTIVELY, 177 (1879), 184 (1885), 194 (1890) 209 AND 211 (1893), CONTAINING REGULAR, COMMEMORATIVE, POSTAGE DUE, OFFICIAL, CARRIER, NEWSPAPER, AND ONE POSTAL SEAL ISSUES. THE 1847 ISSUE WAS REPRESENTED BY A SET OF 1875 REPRODUCTIONS WITHOUT AN ATTEMPT TO SIMULATE THE ORIGINALS BY ADDING A SET WITH SPECIAL COLOR SHADES AS DONE LATER WITH DIE PROOFS (1902 + 1915).

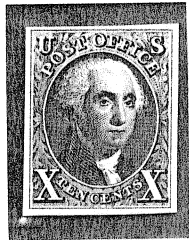
FIVE DIFFERENT SETS OF CARDBOARD PROOFS ARE SHOWN, EACH WITH ITS ORIGINAL ENVELOPE, ALSO VARYING IN DESIGN, AS DESCRIBED BY BRAZER.

THEY WERE SOLD AT FACE VALUE

DULL



.01225



.01230

ONE SET SPECIMEN POSTAGE STAMPS,

ISSUE OF 1847.

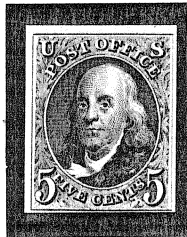
Denominations--5 and 10 cents. Value, 15 cents.

Obsolete: Not receivable for postages.

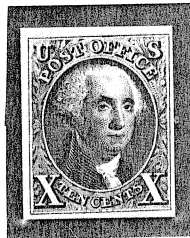
1879
POINTED
FLAP

SEPT. 1879

BRIGHTER



.00865



.00840

UNITED STATES
POSTAGE STAMPS.

1847.

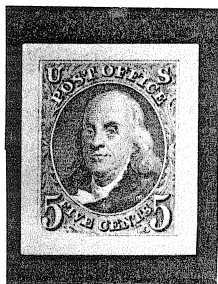
PROOF SPECIMENS.

1885
Rounded
FLAP

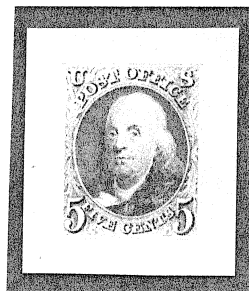
OCT. 1885

THICKNESS IS GIVEN IN INCHES

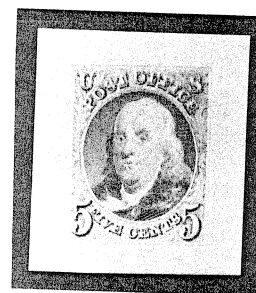
SMALL DIE PROOFS FROM THE 1875 REPRODUCTION DIES
 ISSUED IN 1915 FOR THE
 PAN-PACIFIC EXPOSITION IN SAN FRANCISCO



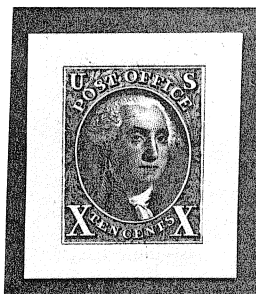
1847
 SHADE



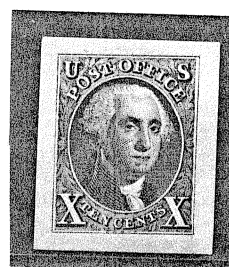
1876
 SHADE



?SHADE



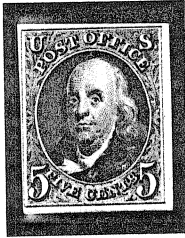
1847 SHADE



1876 SHADE

4 TO 6 SETS COVERING ALL U.S. POSTAGE ISSUES FROM 1847 TO 1915
 WERE PRINTED BY THE BUREAU OF ENGRAVING AND PRINTING ON SOFT,
 YELLOWISH PAPER. AGAIN, 2 SETS, LABELED 1847 AND 1876 WERE PRINTED
 FROM THE 1875 DIES IN DIFFERENT SHADES. THE SET EXHIBITED AT
 SAN FRANCISCO IS IN THE COLLECTION OF THE SMITHSONIAN AT WASHINGTON.
 THE OTHER SETS ARE IN PHILATELIC HANDS.

BRIGHT



.01175



.01165



.00980



.00935



.01140



.01160

LESS
BRIGHT

EVEN
LESS
BRIGHT

United States Postage Stamps,

ISSUE

1847.

1890

JULY 1890 NUMERALS - BLOCK LETTERS

United States Postage Stamps,

ISSUE

1847

JAN 1893

JAN. 1893 NUMERALS CLOSE - NO PERIOD

United States Postage Stamps,

ISSUE

1847.

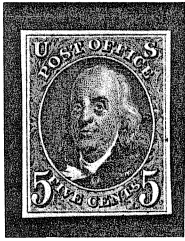
MAY 1893

MAY 1893 NUMERALS APART - WITH PERIOD

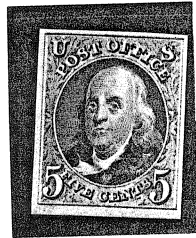
1875 REPRODUCTIONS PLATE PROOFS ON DIFFERENT PAPERS

A STUDY OF SHADES OF COLOR, PLATE POSITIONS, INKING FLAWS & HYBRIDS

I
N
D
I
A



DARK



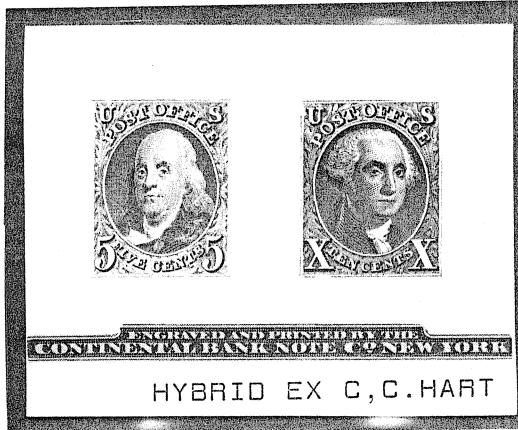
MEDIUM



LIGHT

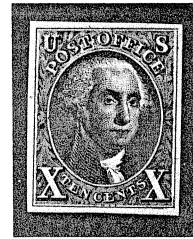
CARD BOARD

MAY 1893



HYBRID EX C, C. HART

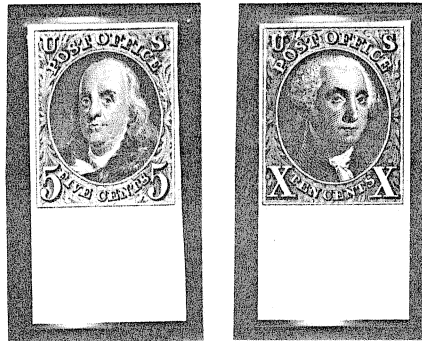
NOTE: THIS ISSUE WAS PRINTED BY THE BUREAU OF ENGRAVING AND PRINTING NOT CONTINENTAL B.CO



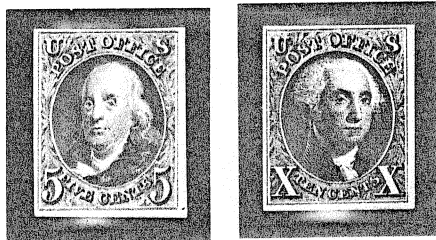
DARK



LIGHT



BOTTOM SHEET MARGIN SET



INK SMUDGED PRINT SET

1879

BOND

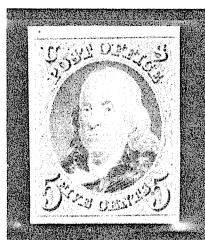


LIGHT SHARP



DARK DULL

DULL ROSE TRIAL COLOR PROOF ON CARDBOARD



NOTE: INDIA PROOFS AND PROBABLY THOSE ON BOND PAPER WERE PRINTED AFTER THE LAST CARDBOARD ISSUE IN JULY 1893

1875 REPRODUCTIONS PLATE PROOFS ON VARIOUS PAPERS

MULTIPLES

SPOT/SHEET



INDIA PAPER

POS 29, 30
39, 40



RIGHT SIDE SHEET MARGIN



TOP SHEET MARGIN

POS #
POS 3, 4
13, 14

CARD

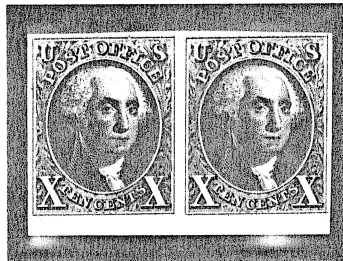


SMUDGED PRINT



SMUDGED PRINT

BOARD

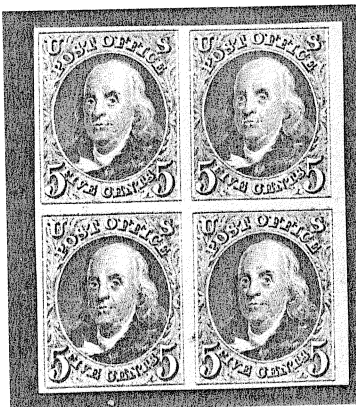


BOTTOM SHEET MARGIN



LIGHT SHADE

BOND PAPER



RIGHT SIDE SHEET MARGIN

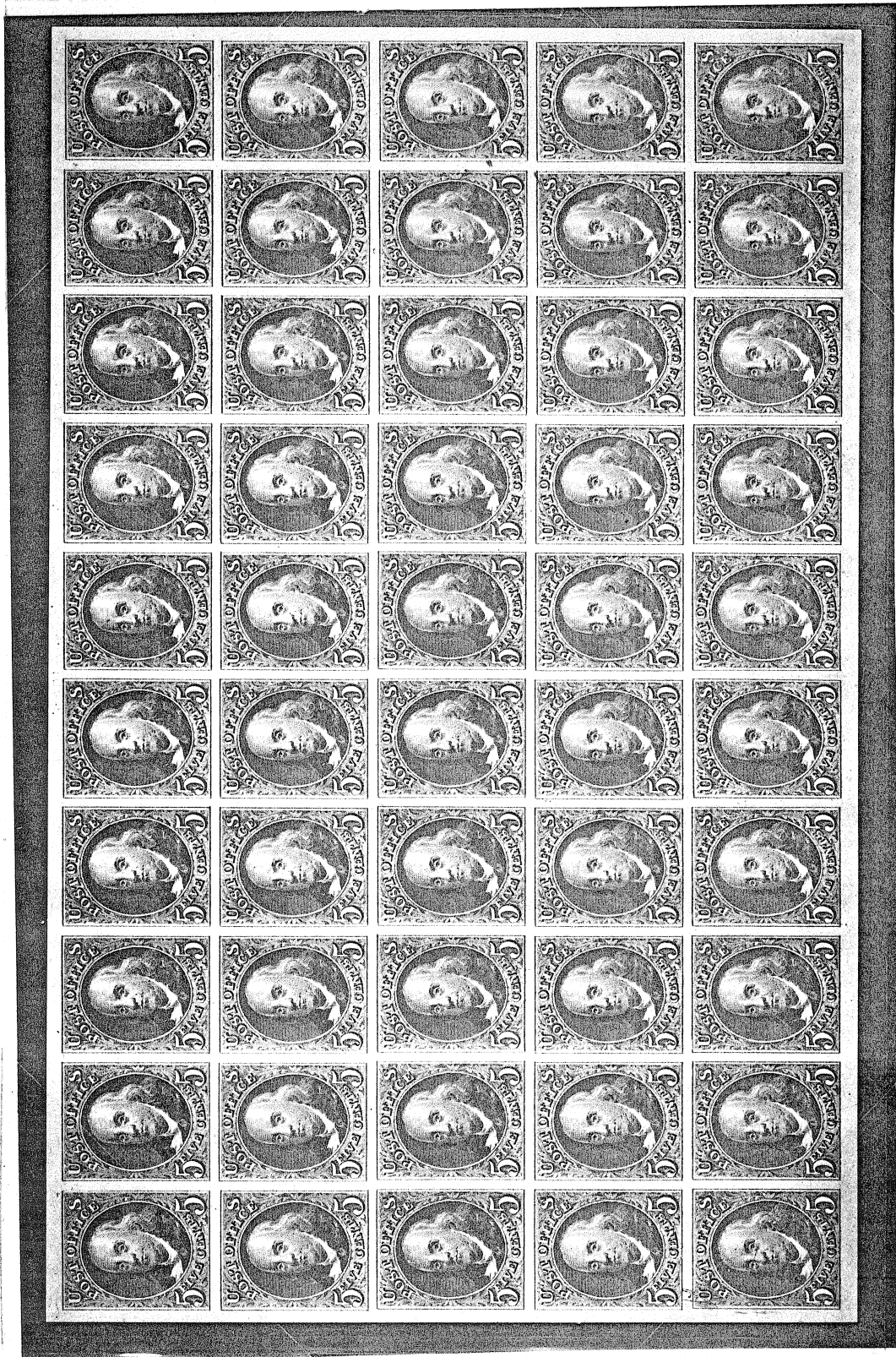
POS 19, 20
29, 30

THE FIRST POSTAGE STAMP PLATES PRODUCED BY THE BUREAU OF ENGRAVING AND PRINTING

NO IMPRINT

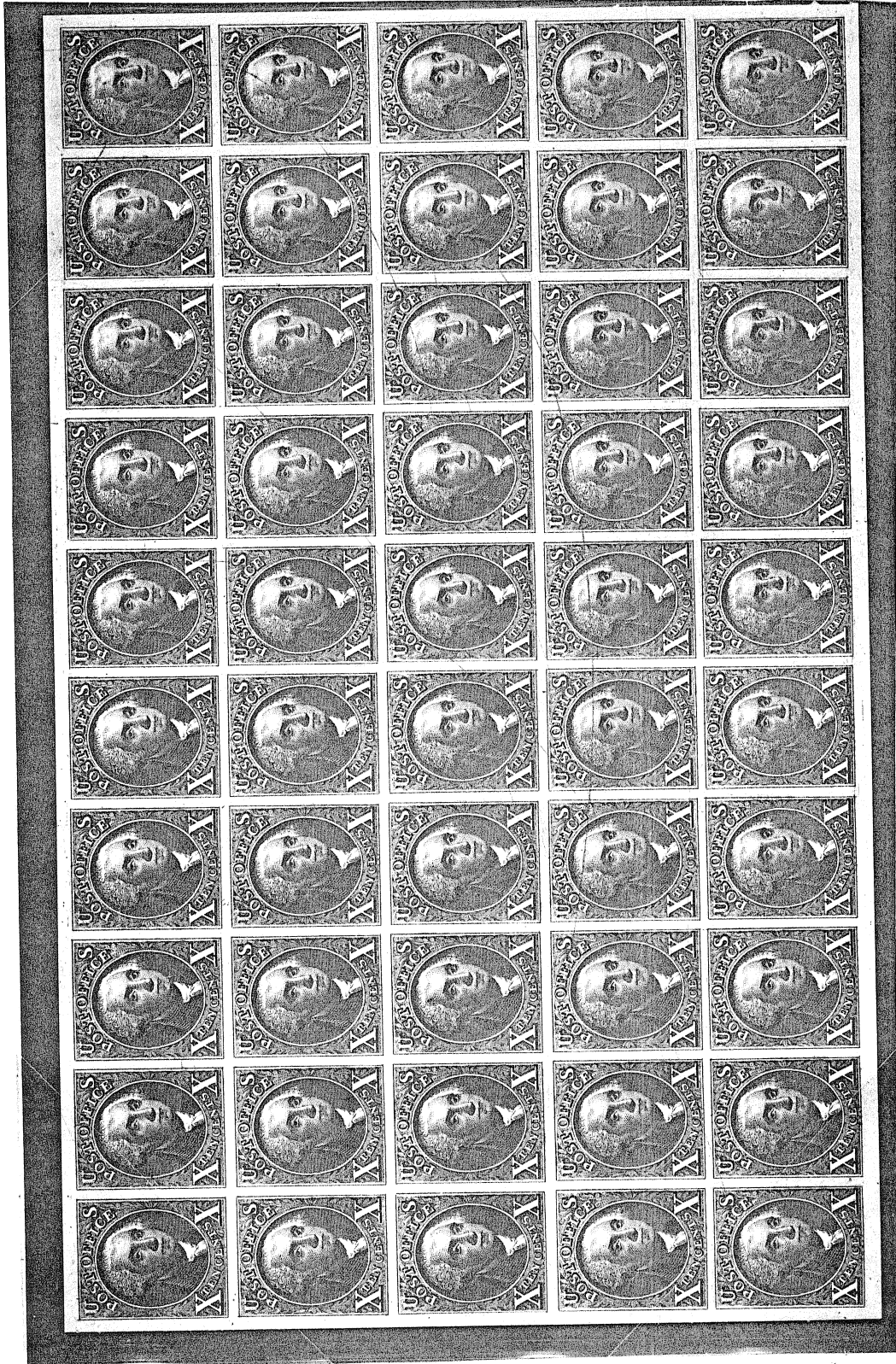
COMPLETE SHEET OF 50 PLATE PROOFS OF THE 1875 REPRODUCTIONS ON INDIA PAPER

NO PLATE



5 SHEETS WERE PRINTED ON INDIA (BRAZER). SINCE THEY SHOW PLATE SCRATCHES (MARKED BY RED ARROW) NOT SEEN ON CARDBOARD PROOFS THEY MUST HAVE BEEN PRINTED LATER, AFTER JULY 1893 AND BEFORE THE DESTRUCTION OF THE PLATES IN 1894.

COMPLETE SHEET OF 50 PLATE PROOFS OF THE 1875 REPRODUCTIONS ON INDIA PAPER



THE 10 CENT SHEET ON INDIA IS DISTINGUISHED BY LONG, CURVED SCRATCHES (FROM GRIT IN THE INK?) HERE MARKED BY RED ARROWS, NOT SEEN ON CARDBOARD PROOFS, WHICH ARE FAR COMMONER (50 SHEETS PRINTED IN 5 ISSUES).

" ATLANTA " SET OF PROOFS

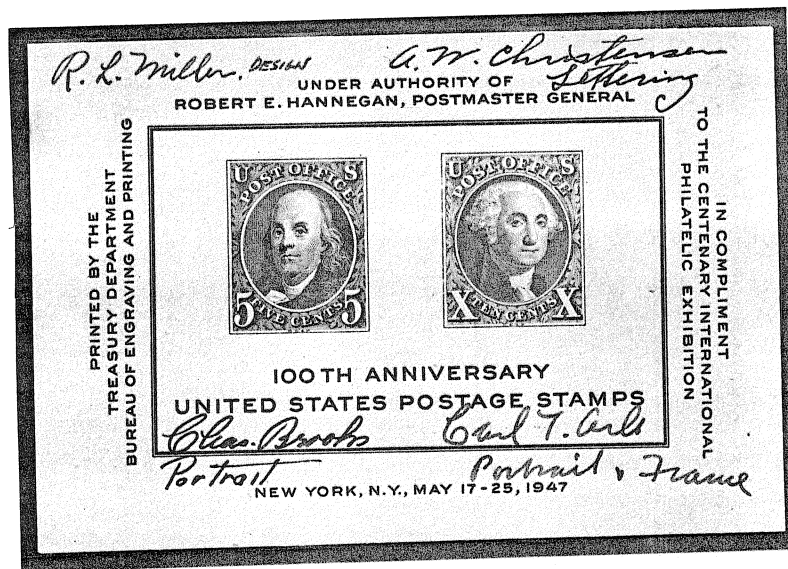
THIS IS A SET OF PLATE PROOFS OF THE 1875 REPRODUCTIONS OF THE 1847 ISSUE PRINTED ON THIN CARD IN 1881 FOR DISPLAY AT THE INTERNATIONAL COTTON EXHIBITION IN ATLANTA, GEORGIA.



ONE SHEET OF 50 PROOFS EACH WERE PRINTED IN 5 COLORS. THEY CAME INTO PHILATELIC HANDS AFTER BEING RESCUED FROM A TRASH BIN AFTER THE CLOSING OF THE EXHIBITION. EXCEPT FOR 4 SETS OF BLOCKS OF 4 AND 2 SETS OF BLOCKS OF 8 THEY WERE CUT UP INTO SETS OF SINGLES.

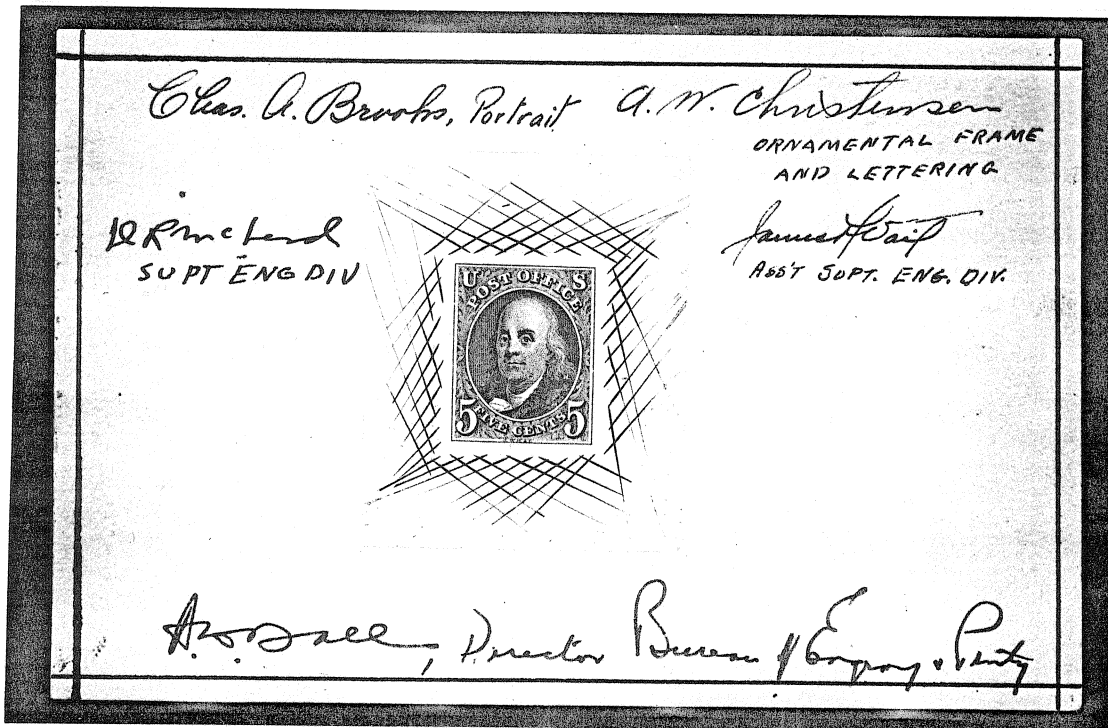
1947 CIPEX SHEET COMMEMORATING THE 100TH ANNIVERSARY OF
U.S. POSTAGE STAMPS. SIGNED BY:

R.L. MILLER, DESIGN
A.W. CHRISTENSEN, LETTERING
CHARLES BROOKS, PORTRAIT
CARL T. ARLT, PORTRAIT & FRAME

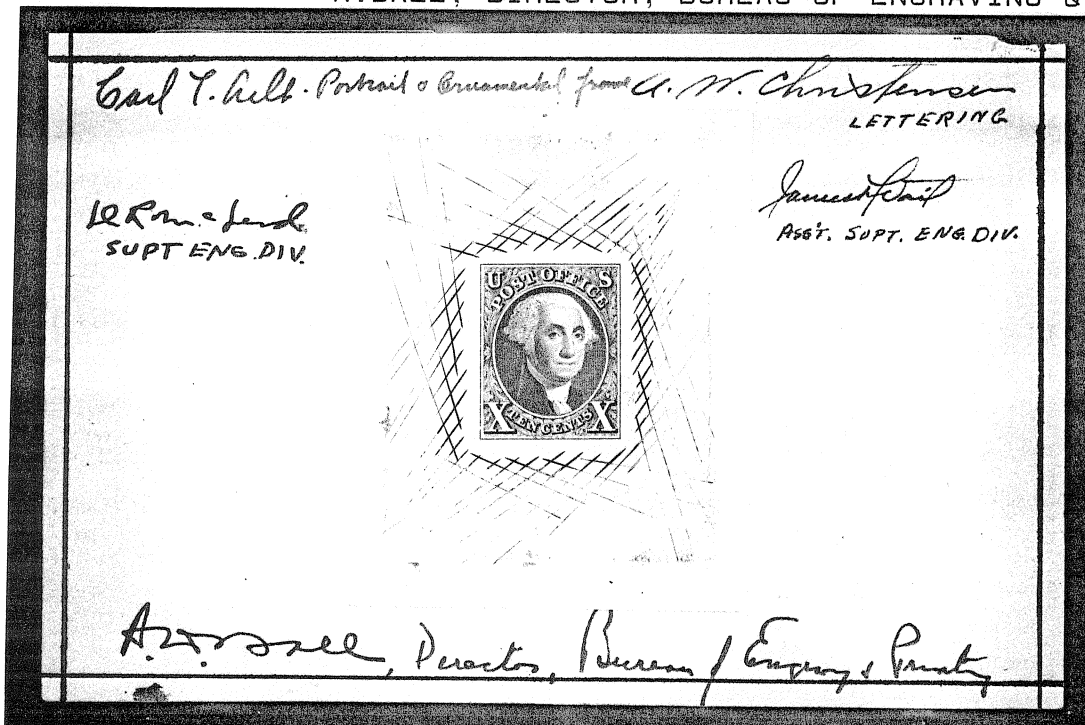


THE DIES MODELLED ON 1847 DIE PROOFS LENT TO THE
POSTAL AUTHORITIES BY GEORGE SLOANE ARE SLIGHTLY
LARGER THAN THE ORIGINALS.

THESE 2 LARGE DIE TRIAL COLOR PROOFS ON INDIA PAPER WERE LENT TO THE POSTAL AUTHORITIES TO BE USED AS MODELS FOR THE DESIGN OF THE 1947 CIPEX SHEET COMMEMORATING THE 100TH ANNIVERSARY OF U.S. POSTAGE STAMPS BY STAMP DEALER GEORGE B. SLOANE



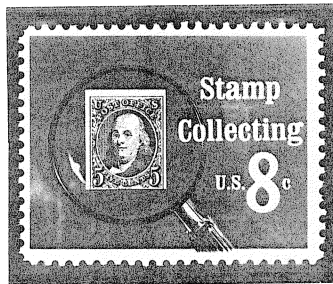
THIS 5 CENT BLACK TRIAL COLOR PROOF ON INDIA (42X52 MM) IS HINGED ON A CARD SIGNED BY : CHARLES A. BROOKS, PORTRAIT
 A.W. CHRISTENSEN, ORNAMENTAL FRAME & LETTERING
 D.R. McLEOD, SUPT. ENG. DIV.
 JAMES T. VAIL, ASST. SUPT. ENG. DIV.
 A. BALL, DIRECTOR, BUREAU OF ENGRAVING & PRINTING



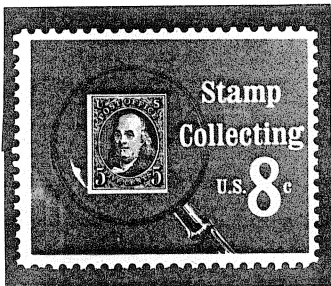
THIS 10 CENT DARK GREEN TRIAL COLOR PROOF ON INDIA FULLY DIE-SUNK (53X66MM) IS HINGED ON A CARD SIGNED BY: CARL T. ARLT, PORTRAIT & ORNAMENTAL FRAME
 A.W. CHRISTENSEN, LETTERING
 D.R. McLEOD, SUPT. ENG. DIV.
 JAMES T. VAIL, ASST. SUPT. ENG. DIV.
 A. BALL, DIRECTOR, BUREAU OF ENGRAVING & PRINT.

THE FIVE CENT 1847 ISSUE SYMBOLIZING STAMP COLLECTING

17 NOV. 1972



LARGE MARGIN TOP



LARGE MARGIN LEFT



NARROW MARGIN LEFT



NICELY CENTERED



ALMOST EQUAL MARGINS



LARGE MARGIN RIGHT

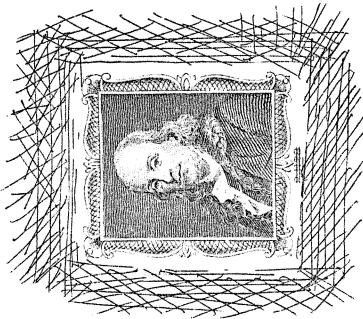


? RIGHT LOWER SHEET CORNER

THIS SIXTH 1847 REPRODUCTION HAS MANY VARIANTS DEPENDING ON THE SIZE OF THE MARGINS THUS ILLUSTRATING THE IMPORTANCE OF PHILATELIC ESTHETICS.

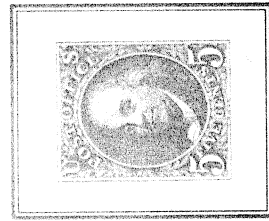
American Philatelic Society

108th Annual Convention
Pittsburgh, Pennsylvania • August 18 - 21, 1994



The five-cent issue of 1847 was prepared by die, similar to the one above. The cross-transfer roll from slipping when the design was being taken from the die.

The transferred design used in the production of the five-cent stamp was slightly retouched.

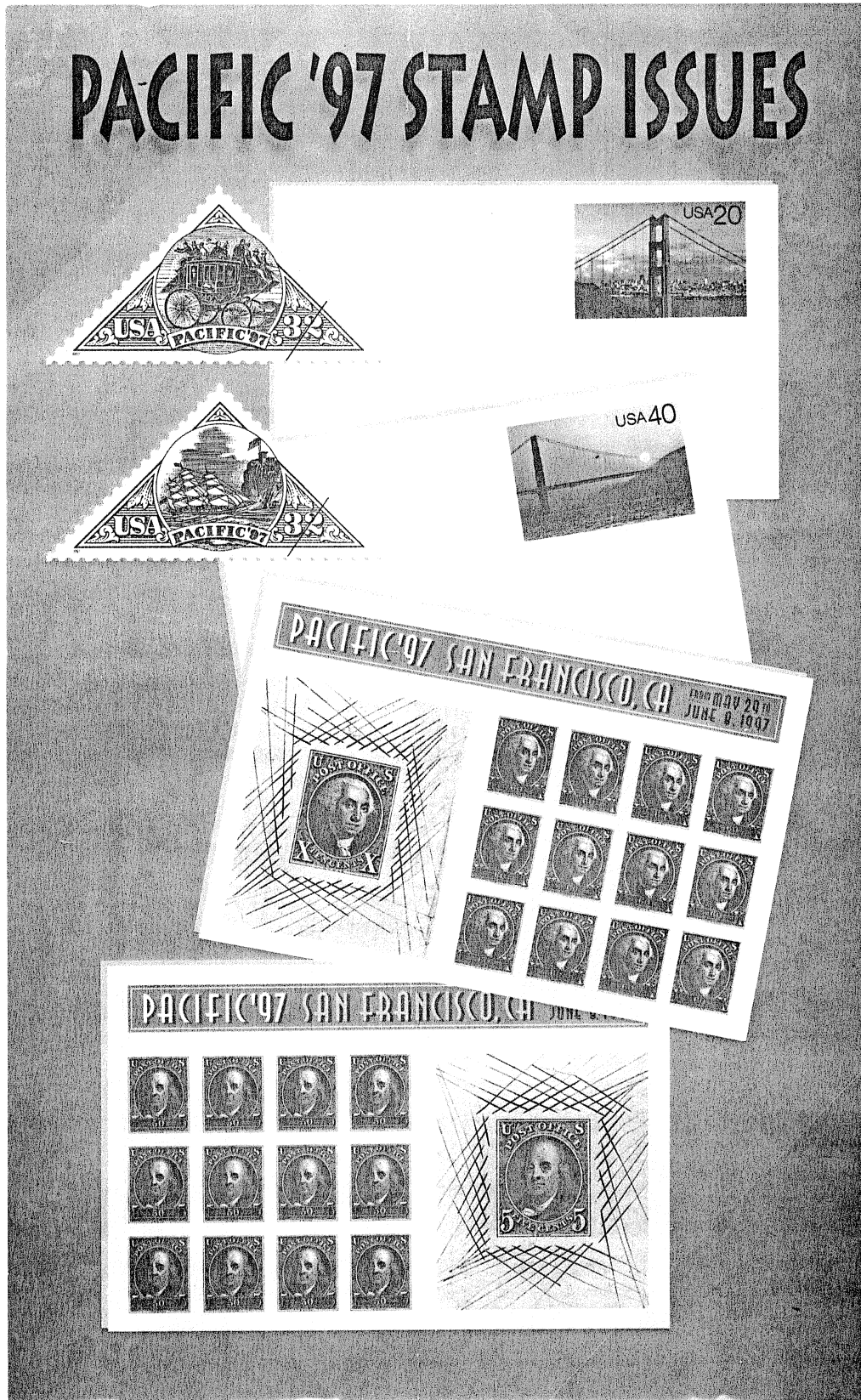


Rawdon, Wright, Hatch & Edson from a stock hatchings were added to prevent the

150 YEARS LATER

THE 1847 DIE PROOFS ARE ALIVE! ON MAY 29 1997 TWO NEW STAMPS IN DENOMINATIONS OF 50 AND 60 CENTS WILL BE ISSUED BY THE POSTAL AUTHORITIES IN SAN FRANCISCO IN COMMEMORATION OF THE 1847 ISSUE, THE FIRST U.S. POSTAGE STAMPS!

PACIFIC '97 STAMP ISSUES



PRIOR REPRODUCTIONS OF THE 1847 ISSUE HAVE BEEN ISSUED BY THE POST OFFICE IN 1876, 1902, 1915, 1947, 1972.