

Cancels

4.1 Color

Although black, red, and blue were the only officially approved cancel colors, post offices used at least nine colors to cancel the 1869 series. About 90% of cancels were black, 7% blue, 2.5% red, and the remaining 0.5% consists of purple/violet, magenta, green, brown, ultramarine and orange. ■

Blue



Lozenge



Pinwheel



Target



Grid



Cross-roads



Cincinnati CDS



Fiscal: Elmira, NY
"Butter Store"



Brooklyn, NY



Baltimore, MD



Philadelphia
Carrier



Lake Ridge, NY grid

Cleveland, Ohio circular
date stamp (cds)

Blue



Baltimore, MD “dot in circle” cancel on unsealed circular; used on domestic mail when cancelled in blue (red dot-in-circle cancels reserved for international mail).

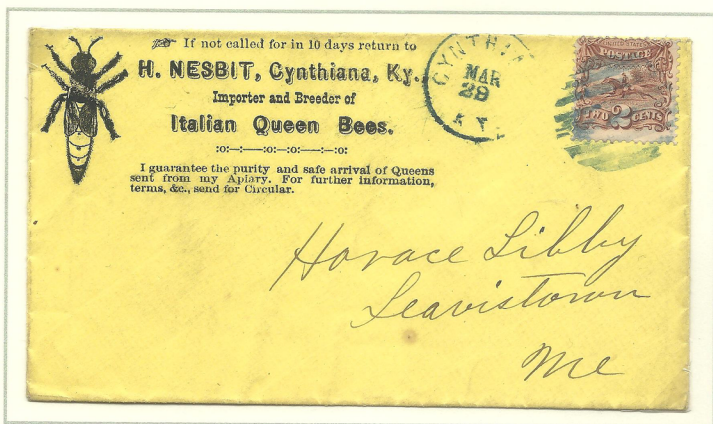


Savannah, GA circular grid cancel on printed circular (mercantile update).

Blue



Yerka, CA (24 June). Largest known used block off cover. (c)



Cythiana, KY unsealed circular.

Red

During the 1869 era, most cancellers were made from cork or wood, and some out of metal. The durable metal types were best suited for postal markings involving words and numbers, such as rate markings, dates, and place-names. Larger post offices received cancelling devices free from the Post Office Department. Postmasters and clerks elsewhere could buy commercial cancellers with personal funds or create their own devices.



Typical, rough geometric and grid designs produced by hand-carved wood or cork cancellers.



[PAID] ALL

Boxed Bremen
exchange office
markingNew York
exchange office
marking

Carlisle, Pennsylvania

Magenta (c)



Purple



Brown



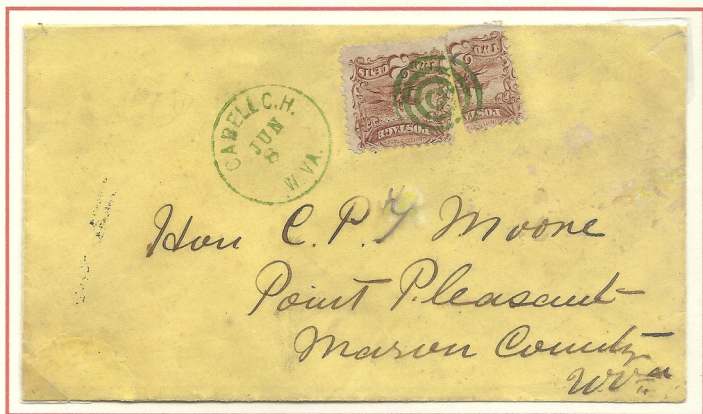
Green



Pale green duplex cancel of Murfreesborough, TN (e)



Dark green grid from undetermined location (ex Jon Rose)



Cabell Court House, WVA. Only 2c Pictorial bisect with green cancel. (e)

Orange



Yellow orange town cancel. **One of two known.** (ex Juring) (e)



Red orange target cancel. (e)

Early pre-cancels on U.S. stamps were generally made by printing one or more lines or bars on the stamps while they were still part of a sheet. Until the 1890s, no pre-cancel lists a town and state fully on the stamp — except for the unique creations of J. A. Howells & Co., a job printer and stationery dealer in Jefferson, Ohio. Only three copies of the "JEFFERSON, OHIO" pre-cancel are recorded on the 1869 issue, and all three are on the 2¢ Pictorial stamp.

Howells' technique was to place a stamp on a blank envelope, then overprint at the same time a pre-cancel, a lined box around the stamp, sender's advertising, and the designation "Printed Matter."



The best preserved of three known examples (e)

4.3 Japan

Stamps of the 1869 issue were available at several U.S. consulate offices in Japan for outgoing mail on Pacific Mail Steam Ship Company vessels. Some of the cancels used by these consular post offices are distinctive and can be identified on individual stamps.



Hiogo double-circle cancel



Yokohama "chop" cancels

Cancels

4.4 Numerals

Postal clerks sometimes used rate markers to cancel individual stamps. The rate for a first-class letter was 3¢, and 10¢ was both a current and past rate for various destinations.

Fairfield, NY



Watkins, NY

Town cancels with year dates

Nashotah,
Wisconsin



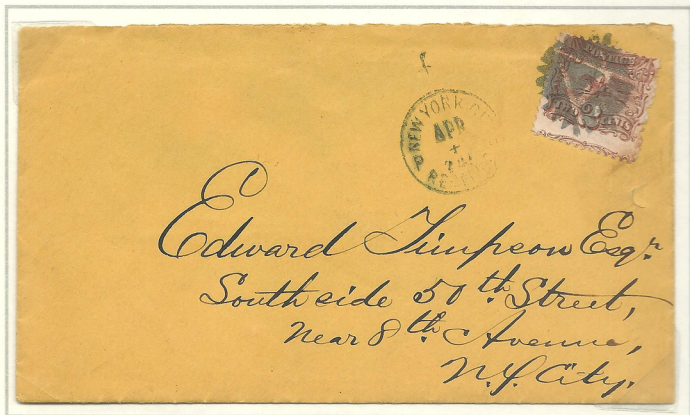
Cancels

4.5 Letters

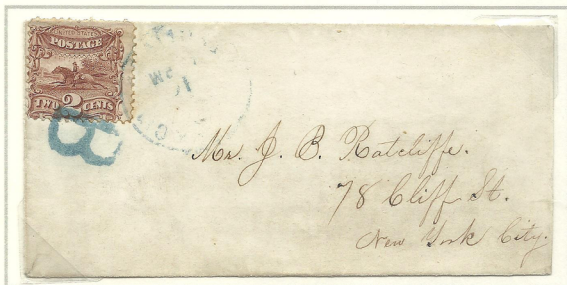
Postal clerks also used letters of the alphabet as cancels. Usually these are carved into cork or wood. The letters can represent city names (see "S" below), or even a political statement (see "K"), but most often they are a whim of the carver's imagination, perhaps the initial of a spouse, child, or pet. Postal authorities took a generally relaxed view of designs used as cancels.



New York City



New York City



Brooklyn, New York



Bedford, Indiana



Negative "C"



Double "D"



Negative "E"



Philadelphia carrier cancel on valentine delivered a day late (Feb 15)



"KKK" (e)



San-serif "L"



Negative "OK"



Design of C.L. Fritz, postmaster



Shermantown, Nevada (e)



Middlebury, Connecticut



Unrecorded "V"



Stylized "W"?



Saccarappa, Maine

Cancels

4.6 Fancy

Postmasters had great latitude to create whimsical and ingenious carvings to cancel postage stamps during the era of the 1869 series. Examples of some of these so-called "fancy" cancels are shown below.



"Walking dog"
Lansing, MI



Three-leaf clover
Waterbury, CT



Bluebird
Rockford, IL



Spiral
Ansonia, CT



Circle of hearts, Milwaukee, WI



Pumpkin face



"Broken heart"



Spider



Sun Face

PAID & FREE



Brown on orange envelope of 1870 with bisected 2¢. East Clarendon to Mt. Holly, VT



Blakeville, NH



New York City



Dedham, MA

"FREE"



Figurative



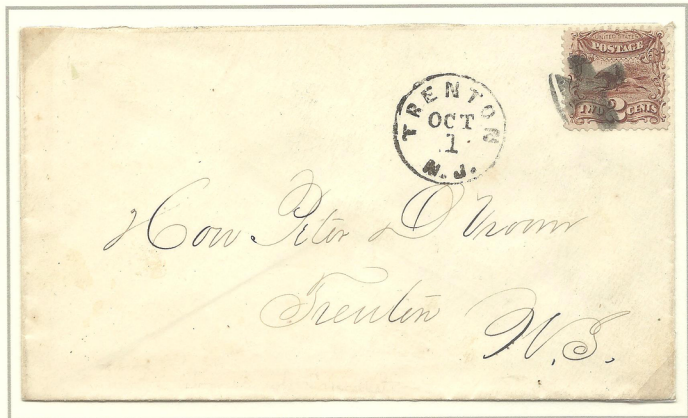
Adams Center, NY



Newark, NJ



White House Station, NJ



Trenton, NJ axe



Ripon, WI



Mummers Philadelphia, PA



Harrisburg, PA



Boston, MA



Fishkill, NY
 Centreville, MD
 New York, NY
 Lockport, NY

Lewiston, ME
 Springfield, MA
 Evansville, IN
 New York, NY

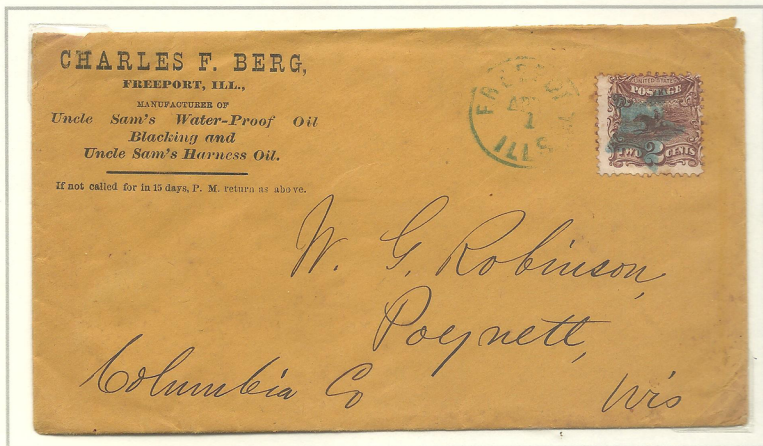
Stars

Stars were a popular choice for many hand-made cancellers. Representative examples of the more than 50 different known designs are shown below. Most star cancels cannot be assigned to a particular location, but some covers with attributable star cancels are available to collectors.

Watkins, NY



Springfield, MA



Freeport, IL



Unknown Towns of Origin

Rosettes



Grass Valley, CA double 3¢ first-class rate, plus 15¢ registration fee paid by 1868 grilled Lincoln stamp.

