

Fancy, CDS, Grids

Fancy Cancels are Uncommon on the 12c Stamp During the Perforation Period



Fancy radial  
Davenport, Iowa



Fancy bars  
Columbus, Ohio



"Bottle stopper 14"



Fancy grid, blue  
segmented, (E)



Fancy grid, SR8  
Montgomery, Alabama



Red CDS  
Boston, MA



Double Ring CDS, Feb 21, 1860  
Mobile, Alabama



Blue CDS  
Philadelphia, PA

Green open 7-bar grids



Green is the most uncommon color  
of the period, but had increased in use  
with perforated stamps

New colored grids decline as the decade proceeds



Double Blue Grid



9-Bar Red



8-Bar Maroon



Dotted Grid

New Orleans and Mobile, Alabama, produce most of the dated cancel examples.



Black CDS, Aug 17, 1858  
New Orleans, LA



Black CDS, 1859  
New Orleans, LA

Numerals

Exchange Office markings, domestic and foreign, and rate markings increase during the decade. They sometimes appeared improperly on stamps as they were not meant to be cancellation devices.



Am. Pkt. "3" credit to GB, black CDS



Am. Pkt. "3" credit black grid cancel



Encircled red "5" unknown town



Encircled black "5" unknown town



Am. Pkt. double rate credit "6" Philadelphia Exchange Office



Prussian Closed Mail Boston Exchange Office



British Pkt. "19" credit New York Exchange Office Black CDS cancel



British Pkt. "19" NYC, black grid cancel



"38", two styles, double rate credit markings for British Packet mail, New York exchange office, uncommon use, short-lived markings



"24" rate marking, 7-bar grid cancel Uncommon in blue



"39" struck on double rate franking to England Unique to Portland, Maine, Exchange Office No postal meaning known. Portland "6" marking used for 2 weeks.



"30" dark red in octagon One recorded example

Foreign Exchange Offices sometimes struck their markings on the stamp, especially if it was uncanceled.



Numeral "466" Liverpool P.O. On forwarded mail



London S.W. District Office marking On forwarded mail

PAIDS

“PAID” Cancels Increased During the Perforation Period



12 Strikes of Encircled PAID in GREEN on Block of 8. Positions 21-24R1/31-34R1 Unknown Town. *Only recorded GREEN PAID.*



PAID, Blake type #625 Foreign mail 1857-1862



Bold, Encircled PAID Unknown Town



Large Boston PAID mimic Beverly, MA



Encircled RED PAID Philadelphia, PA



Boston-Like encircled PAID Saco, Maine



Straight-line PAID, 20mm Unknown town



Straight-line PAID 16.5 x 4mm, blue

Boston was a leader in the PAID cancel design.



Blake type 623 PAID. Boston to Germany, 16 Sept, 1858. 12c Positions 13-14L1. 1c Positions 99-100R5, Type Va, 3c are Scott 26a, 21-22R10 Early.

Inland Waterways

Postage Due Markings

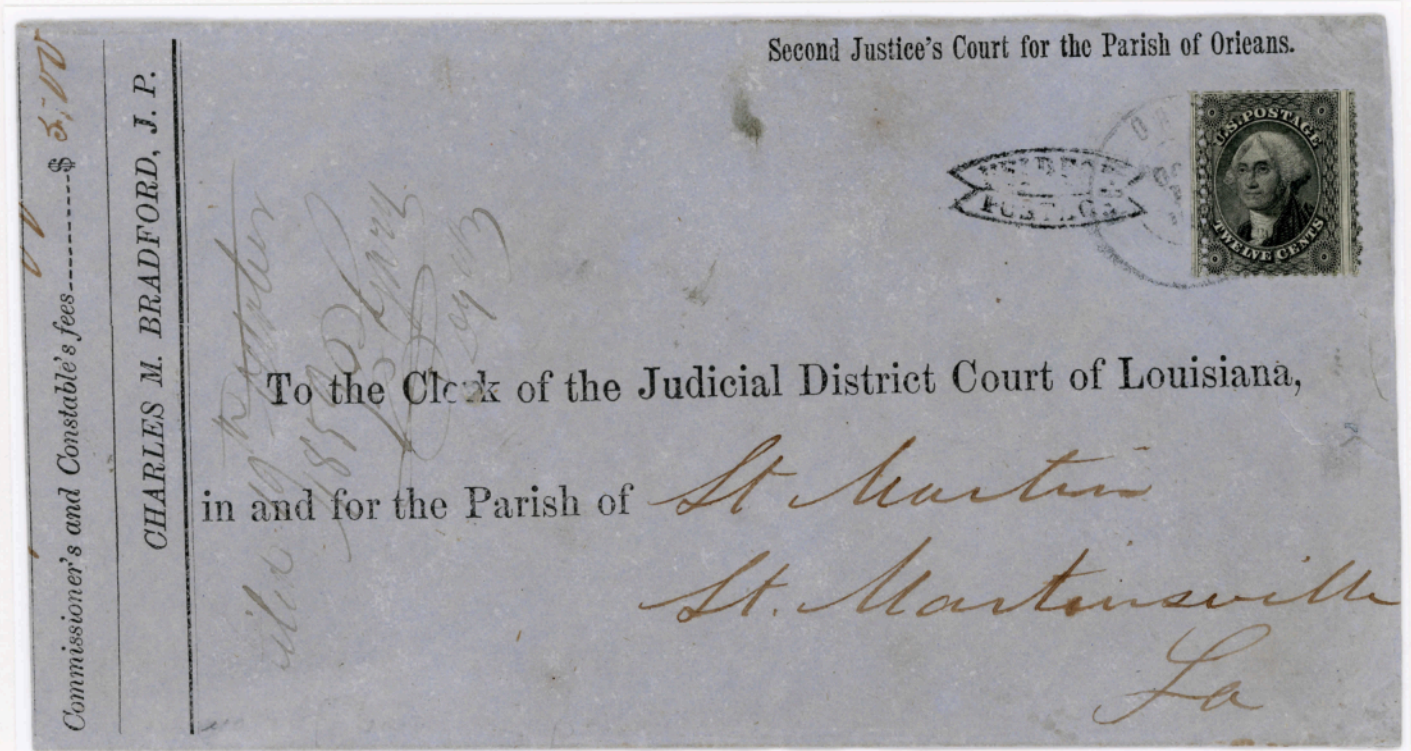
New Orleans & Vicksburg River Mail Starts Journey to Liverpool



Only Recorded Example of N.O. & V.R.M. to Foreign Destination, Towle M-15-a, Rarity VII

Put on steamer of New Orleans & Vicksburg River Mail, most likely at Baton Rouge, LA, on 26 Sept, 1858, arr. New York on 5 Oct, 1858, dep. Boston 6 Oct, 1858, on Cunard Line's *Niagara*, arr. Liverpool, 17 Oct., 1858. Red U.S. 19c credit to Great Britain.

New Postage Due Markings Appear



"Held for Postage" marking appears in New Orleans with 12c stamp.

Such markings become more common during this period especially on heavier mailings where the 12c was most used. 19 Oct, 1859, New Orleans to Martinsville, LA. 4X domestic rate <3000 miles. Single uses of the 12c are not common (Alexander census).

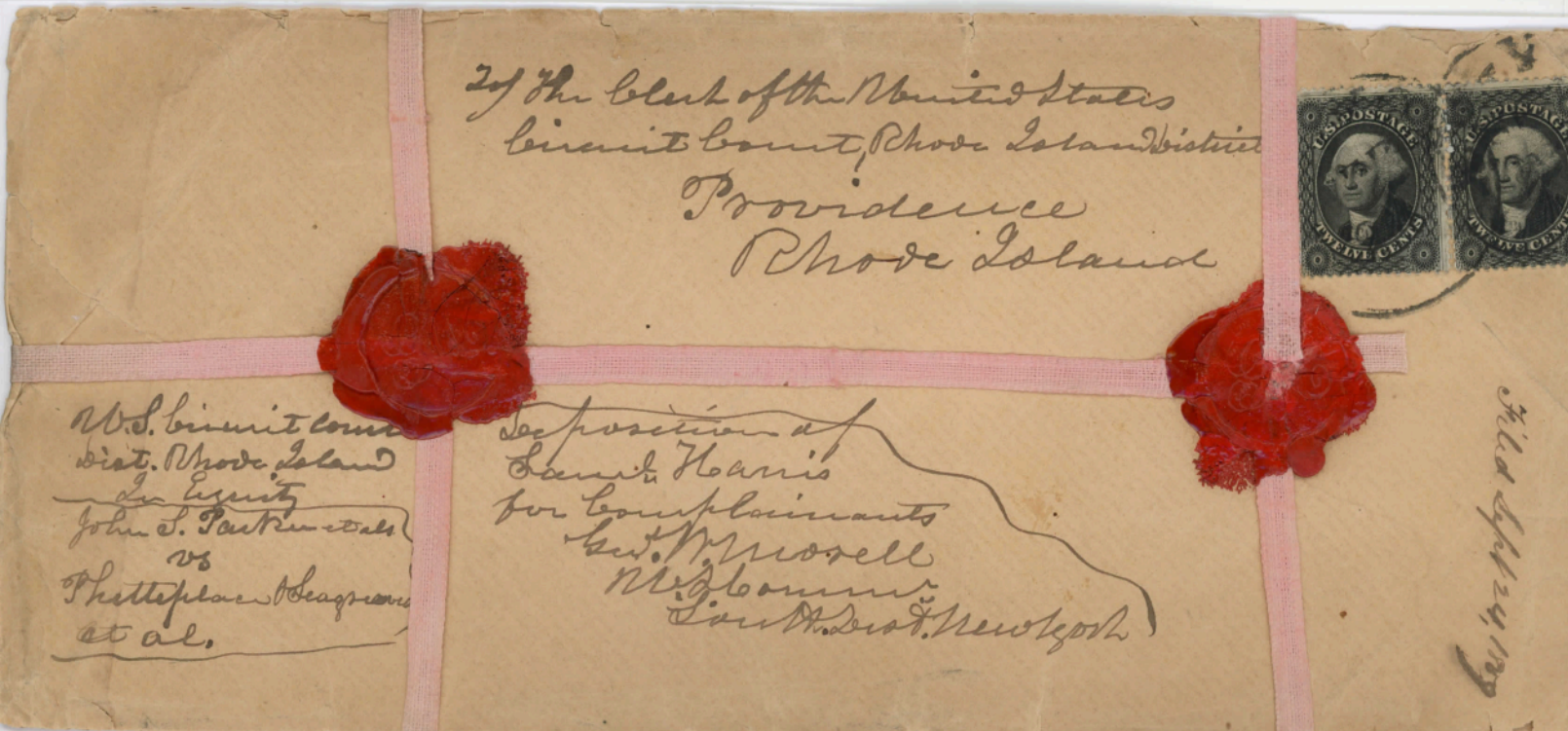
Official Post Office Mail and Unofficial Security Mail

Only Recorded US Post Office Official Envelope with 12c Stamp, 4x Rate, 1 Mar, 1861



Mail sent to Col. Ruggles, US Army (active) in Fredericksburg, VA, likely resignation or pension papers. He resigned his US Army commission on Mar 7, 1861, and joined the CONFEDERACY shortly thereafter. 12c paid 4x <300 mi rate. Geo. F. Nesbitt & Company, Manufacturers, New York. Believed to be unique by PO Official cover specialists.

"Sealed Ribbon" Deposition Cover from Southern District of New York to Circuit Court, Rhode Island District, Providence, Rhode Island, Sept. 24, 1859



8X Rate, "The Clerk is ordered to open this deposition - October 17, 1859 John Pitman District Judge" (reverse, appointed by President Monroe, 1824-1864). NY court signed red wax seal. Pos. 44-45R "scratchon head" variety.

Inland Waterway

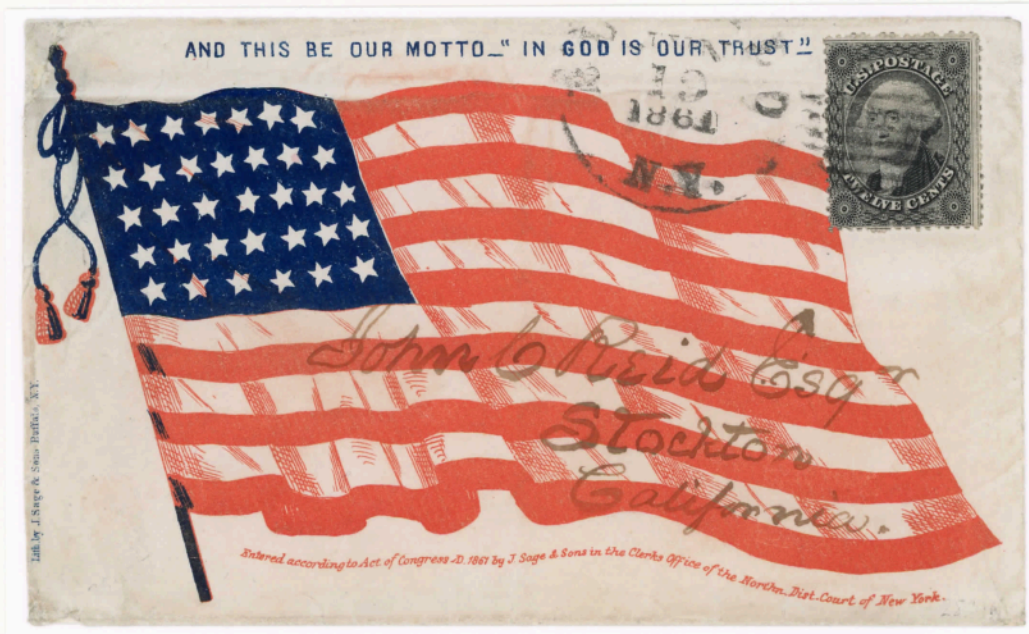
Domestic Civil War Patriotic

4X Rate Heavy Folded Letter Travels by Steamboat to Mississippi River Town



Letter sent from New Orleans, 27 April, 1858, to Beillers (sic) Landing, LA. Steamboat *Princess* incorporated this specific greenish blue route agent's CDS, "N. O. and Vicksburg R. M." in 1858 that cancels the 12c stamp (pos. 49L1) paying 4X domestic rate. This was a river mail route from New Orleans to Vicksburg. *Considered unique by specialists.* The route was renewed but name changed to Route 8165 3 months later. In February, 1859, the *Princess* ceased to exist when her boilers exploded. By May, 1861, all these waterway contracts were ended in seceded states.

12c Pays Transcontinental Rate, New York to Stockton, CA, on Domestic Patriotic



Single unplated Plate 1, 12c overpays 10c transcontinental rate from New York to Stockton, California, 19 June, 1861. One recorded domestic patriotic cover used with any 1851-1861 12c stamp.

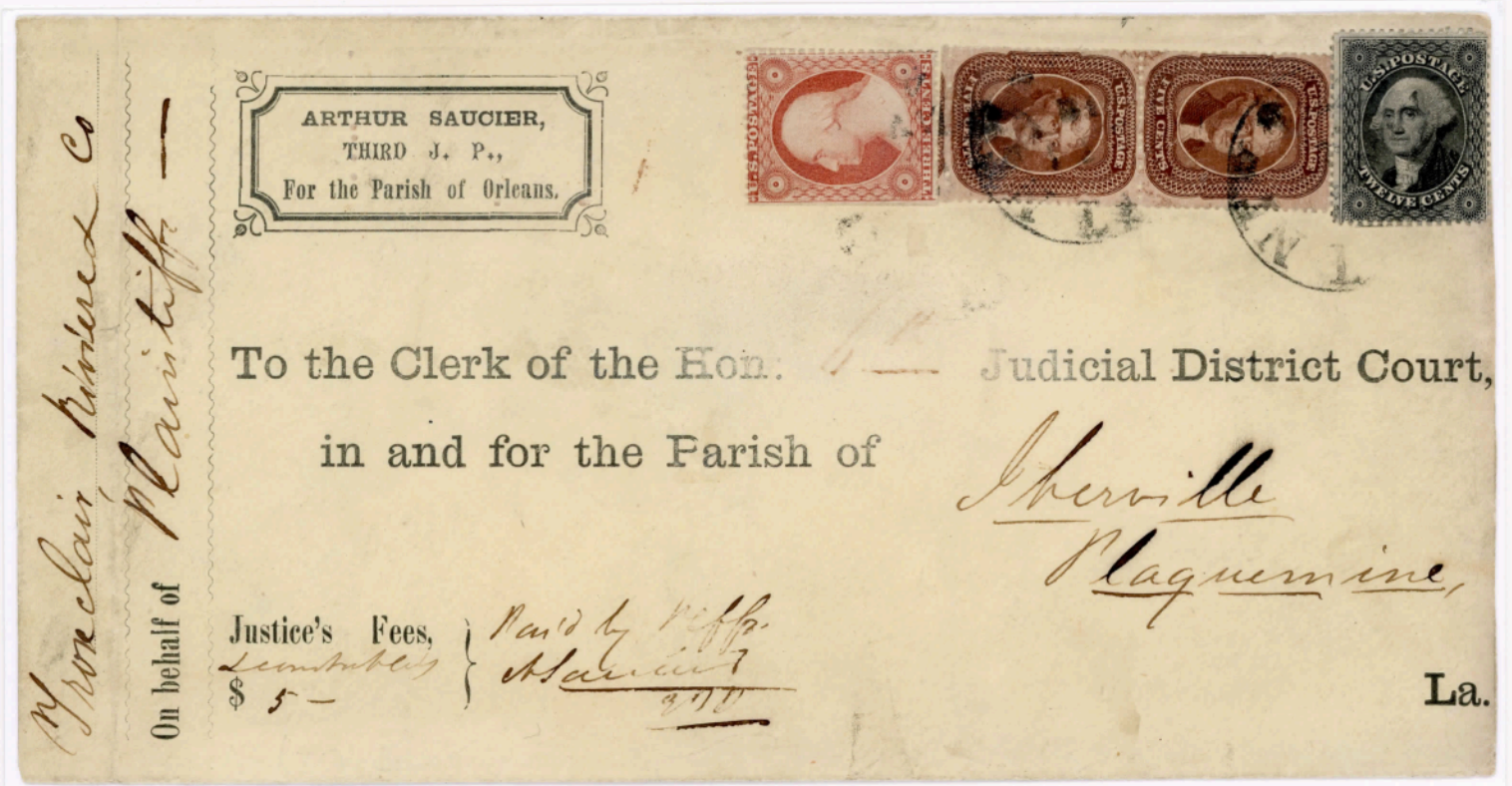
V. Domestic Uses

Plate 1 1857 Perforated

Independent State Use

4X Transcontinental Use

12c Mixed Franking Pays 8X Rate by Independent State-Last Use of USPOD System



Mixed franking overpays 8X local domestic rate by 1c for official letter from New Orleans to Iberville, LA, Feb, 1861, arr. 1 Feb. Postmaster general Blair ordered cessation of U. S. Mail in the South on 31 May, 1861. LA seceded 26 Jan, 1861, and joined the Confederacy 4 Feb. LA is independent state 9 days. First and last time the POD allowed independent states to use the USPOD system.

12c Makes Up Quadruple Transcontinental Rate After 1855 Rate Change



Memphis, TN, 21 May, 1858, to Nevada, CA, filed 3 July, 1858. Very uncommon use of the 12c after the issuance of 10c stamps designed for transcontinental use. Positions 53-54-55R1, 43-44-45R1 guide dots above.

British North America  
Rare Destination - Malta

Single Perforated 12c Used to Nova Scotia



*One Recorded Example for Perforated 12c*

New York, 10 June, 1858, to St. John, New Brunswick, Arr 13 June, 1858, Arr Annapolis, Nova Scotia, 14 June, 1858 back stamp. Characteristic red "U. States, C" exchange office marking. 2c overpay with 12c stamp, position 80L1, perforated centerline variety.

*There are a total of 5 recorded 12c stamps used on-cover to Nova Scotia, all overpays.*

Treaty rate with provinces established as 10c on 1 July, 1851, but 10c stamps were not available until 1855.

Final Destination – Malta



*One Recorded Example of Any 12c to Malta*

Dep. Montgomery, Alabama, 24 Mar, 1860, Dep NY on Cunard Line's Asia, 28 May, Arr Liverpool, 8 April, Arr Dublin, 9 April. Forwarded from Dublin (magenta), Arr Malta Post Office on 9 April for one shilling. 19 credit to GB. Pos. 43-44L1.



Russia  
Hungary

Prussian Closed Mail

Gorham, Maine to St. Petersburg, Russia, 1861



Gorham, Maine, Dep Boston, 6 Mar 1861, on Cunard Line's *America*, Arr Queenstown, 16 Mar, 1861. (E)  
Arr Aachen border, 19 Mar, 1861. Endorsed "Via England & Belgium by the Prussian closed mail", British Pkt, 37c rate.

Positions: 12c 4R1-14R1, 24L1, Type V 1c

Finest of 5 recorded examples of 12c to Russia

Prussian Closed Mail rate was instituted in Nov, 1852. 12c denominations were often used given the high rate charges.

Houston, Texas, to Szolnok, Hungary



Houston, Texas, 1858, to New York, Dep 20 Nov, on Inman Line's *Kangaroo*,  
Arr Liverpool 3 Dec, 1858, Arr Aachen border, 4 Dec, then Szolnok, Hungary, 30c letter rate by Am Pkt.

One recorded example to Hungary in this period.

Positions: 12c, 31L1-41L1, 3c Type II

Earliest Documented Use

Triple Rate to France

Earliest Documented Use of Perforated 12c Went to France

APS EDU Certificate



Large homemade cover mailed from Plainfield, New Jersey, 30 July, 1857, carried on American Collins Line's *Atlantic*, Dep New York, 1 Aug, Arr Liverpool 12 Aug, and Suresnes, a suburb of Paris, 13 Aug. French "24" decimes manuscript, postage due for triple-rate letter as marked "short paid". Positions: 87-88R1, 77-78R1, 67R1. Uncommon mixed usage.

**CHANGE:** Perforations were introduced for the 12c. The French postal rates changed April, 1857.

12c Makes Up Triple Rate to Trevillers, France, From Louisville, Kentucky, 1860



Louisville, Kentucky, 10 May, 1860, British Open Mail by British Pkt Cunard Line's *Canada*, Dep NY 15 May, Dep Boston, 16 May, 1860, Arr Liverpool, 27 May, Arr Paris, 29 May. Paid letter "36" NY credit marking in red, indicating triple rate letter.

Positions: 57L1, 59-60L1 unperforated centerline. 3 X 3c Type 2, no inner lines.

Northern Europe

Prussian Closed Mail to Norway from Lisbon, IL



3 X 12c and 10c Type II pays 46c PCM rate by Am. Pkt, Havre Line's *Fulton*, Dep NY, 5 Jan, 1861 to Bergens Stift, Norway, from Lisbon, IL, an Norwegian emigrant community. 23c credit marked at NY. 6 ½ silbergroschen fees beyond Prussian border. Aachen, Svinnesund transits on front, Hamburg and Christiania, Norway, back stamps. (E) Positions: 51L1-52L1, 41L1  
 New PCM rate to Norway began, July, 1855. Havre Line would shortly cease operations.

Key West, Florida, to Stockholm, Sweden – Misperforations were a Problem



Uncommon mixed use of 3c and 12c stamps and 3c PSE from Key West, 23 Sep, to Sweden, correctly paying 42c PCM rate. 19c credit to Great Britain. Carried on Cunard Line's *Persia*, Dep NY, 28, Sep 1859, Arr Liverpool, 8 Oct. No back stamps. Aachen transit. Strange angled misregistration of perforator. Positions: 27L1-37L1-47L1  
 New PCM rate was introduced in Oct, 1852. In 1857 TCC&Co. was new to perforations and still having difficulties.

Austria  
Germany

12c Pays Double Prussian Closed Mail to Vienna, Austria



5 perforated 12c Plate 1 stamps pay the double rate (60c) Dep New Orleans, 21 Aug, 1858, Dep NY on the British Cunard Line's *Arabia*, 1 Sep, Arr Liverpool, 11 Sept, Arr Vienna, 16 Sept, 1858. New York "14 credit" in red for double PCM rate. Stamps are scissor separate due to misperforation. Position 16-19R1, single 20R1.

**CHANGE:** A new Austrian rate was established Oct, 1852 along with a Prussian Closed Mail (PCM) rate.

Triple Prussian Closed Mail Rate to Baden, Germany



7 perforated 12c Plate stamps and 2 perforated 3c stamps make up the triple (90c) PCM rate via American packet from Steubenville, OH, to Bondorff, Baden. Inman Line's *Edinburgh* Dep NY, 28 Jan, Arr Queenstown, 8 Feb, Arr Liverpool, 10 Feb, Arr German border, 11 Feb, two Baden RR back stamps, 12 and 13 Feb. Incorrectly credited in red for double rate. Positions: Block, 39-40L1/49-50L1, 69-70L1, 60L1, all perforated centerline varieties.

## VI. Foreign Uses

Germany  
Registration

Registered Mail, Albany, NY, to Mollbergen, Saxony by Bremen Packet



Dep Albany, 7 Sep, Dep NY, 11 Sep on North German Lloyd's (NGL) New York, Arr Bremen, 24 Sep. Handwritten and hand stamped "Recommandé." A very scarce example of international stamped registered mail in this period. NY "12" credit on Bremen Pkt mark. (E)

Position: 26R1

CHANGE: Bremen-Hamburg postal agreements put in place July, 1857. 15c rate went into effect.

Letter to Hessen-Cassel by Hamburg Packet



German Pkt, HAPAG Line (Hamburg-American Line) Dep 1 Sep, Arr Southampton, 14 Sep, Hamburg, 16 Sep, Cassel, 18 Sep, Marburg, 18 Sep, 1858.

Position: 71R1

CHANGE: The "Hessen-Cassel rate" of 22c went into effect July, 1857. It lasted about 2 years. Act of 14 June, 1858, HAPAG compensated for sea postage only by US PMG on a contract basis. German mail and mail routes increased, along with the use of 12c stamps.

## Plate 1 1857 Perforated

Austria  
Germany

Rhode Island to Vienna, Austria by French Convention



27c rate necessitating use of 2 12c stamps to Austria, direct via French Convention and American Pkt. Newport, Rhode Island, 13 Oct, 1857, carried on Havre Line's Fulson, Dep New York, 17 Oct, Arr Havre, 30 Oct, Arr Vienna, 3 Nov (back stamps). 15c credit to France in magenta.

Position: 29R1-39R1

CHANGE: In 1852, Postal Laws & Regulations, Sec. 375, and again in 1857, Sec. 333, specified total "through rate" was to be stamped in red for foreign mail not originating at exchange offices, paid by stamps or cash, but was normally ignored on stamped letters. New direct rates within French Convention were introduced in April, 1857. 12c uses increases.

Savannah, Georgia to Badbergen, Hannover, by Bremen Packet



Savannah, GA, 30 June, 1860, Dep New York, 7 July, on Bremen Pkt, North German Lloyd's New York, Arr Southampton, 19 July, Arr Badbergen, 22 July (back stamp), 1860.

Position: 7R1

Switzerland  
Belgium

Princeton, Illinois to Lenzburg, Switzerland, 1860



Princeton, IL, 18 Sep to New York, Dep 22 Sep, on Vanderbilt European Line's *Illinois*, Arr SO, 6 Oct, Basel, 8 Oct, Aarau, 8 Oct, by Prussian Closed Mail, American Pkt, 35c rate. Earliest use of New York marking.  
Positions: 12c 54-55L1, Type V 1c, Type III 10c

Prussian Closed Mail rate was instituted in Nov, 1852. 12c denominations were often used given the high rate charges.

Cuthbert, Georgia, to Brussels, Belgium



Cuthbert, 13 Jun, 1860, to New York, Dep 20 Jun, on Cunard Line's *Africa*, Arr Liverpool, 1 Jul, Calais, 3 Jul, Paris, 3 Jul, Brussels, 4 Jul, 1860. 42c paid double letter rate by British Pkt through French mail. Credit to France.  
Covers to Belgium are uncommon. Positions: 12c, 32L1-42L1-52L1, 3c Type II

Largest Positive Reconstruction  
From a Single Left Pane

Largest Reconstruction Formed from an Original Franking on an 1858 Heavy Wrapper to England From Michigan

This reconstruction was fundamental to accurate plating of the Left Pane, Plate 1, which was particularly difficult. The block of 20 consists of 2 blocks of 6 and 2 blocks of 4.

The block of 26 consists of 2 blocks of 8, 2 blocks of 4 and 1 pair.

The "block" of 4 consists of 2 pairs of adjacent plate positions, but is not a severed block of four.



46L1

56L1

66L1

76L1

86L1

Photo of mock-up of stamps as they would have appeared on original wrapper to Great Britain. Pontiac, MI, 25 1858, Dep Boston 30 June, Casard's Europe, Arr London 9 July, 1858, Walford the next day. Largest rate (285) and 12c franking recorded. Wrapper and stamps remained after being separated 80 years. Missing 6 stamps. (45% mag.)



100L1 was recut in lower left corner but not recut in lower right corner. This is the only stamp on the plate so recut. (See imperforate plating, Frame 1)

21L1

22L1

31L1

32L1

