

Sent to Pennsylvania
One of 7 Recorded Covers with the Philadelphia “R”



Pos. 40
“ACM”

Registered Mail

The rate of 5c was for a letter of up to ½ oz. sent up to 300 miles.

This blue “R” was used at Philadelphia from 11/1/1845 to 10/1849, when replaced with a smaller “R”. It indicated that the letter contained something of value.

PFC 342219

New York to Philadelphia, Pa.

March 11, 1846

Sent to Massachusetts
One of 11 Known NY Provisional Covers Posted after June 30, 1847



Pos. 29
“ACM”

Very Late Use

The rate of 5c was for a letter of up to ½ oz. sent up to 300 miles.

The N.Y. Post Office stopped selling these adhesives on 7/1/1847, when the first U.S. postage stamps were issued. However, it continued to accept them as valid until at least Jan. 1850.

New York, NY to Milton, Mass.

December 14, 1849

Concomitant Use with a Local or Carrier

There are a small number of examples of the New York Provisional adhesive used with a local or carrier stamp. Two examples have a Boyd's Local stamp, only one of which is on a full cover and is shown below. Two others exist with a U.S. City Despatch Post adhesive, a rebacked cover to Holland and the other with "RHM" control initials (the latter below). Finally, there is a very curious cover with one-half of a Dupuy & Schenck local stamp, which has not been certified.

**Sent to the District of Columbia
One of 2 Known Covers with a Boyd's City Express Stamp**

The local rate was 2c for delivery service from the sender's residence to the NY post office, then a rate of 5c for a ½ oz. letter sent up to 300 miles.

The second Provisional combination with a Boyd's local was on a March 16, 1847 cover front sent to Albany, NY..

Pos. 8
"ACM"



PFC 501338

New York to Washington, D.C.

June 19, c.1846

**Sent from Outside New York City
One of 2 Known Covers with a U.S. City Despatch Post Stamp**



Pos. 5
"RHM"



The 5c adhesive was accepted at New York as postage due for a 0-½ oz. letter sent up to 300 miles.

The 3c Carrier rate was for delivery from the NY Post Office to Wall Street

The second combination with a U.S. City Despatch Post Carrier was on a Nov. 13, 1845 rebacked cover sent to Kemper, Holland.

PFC 47006

New Hamburg, NY to New York City

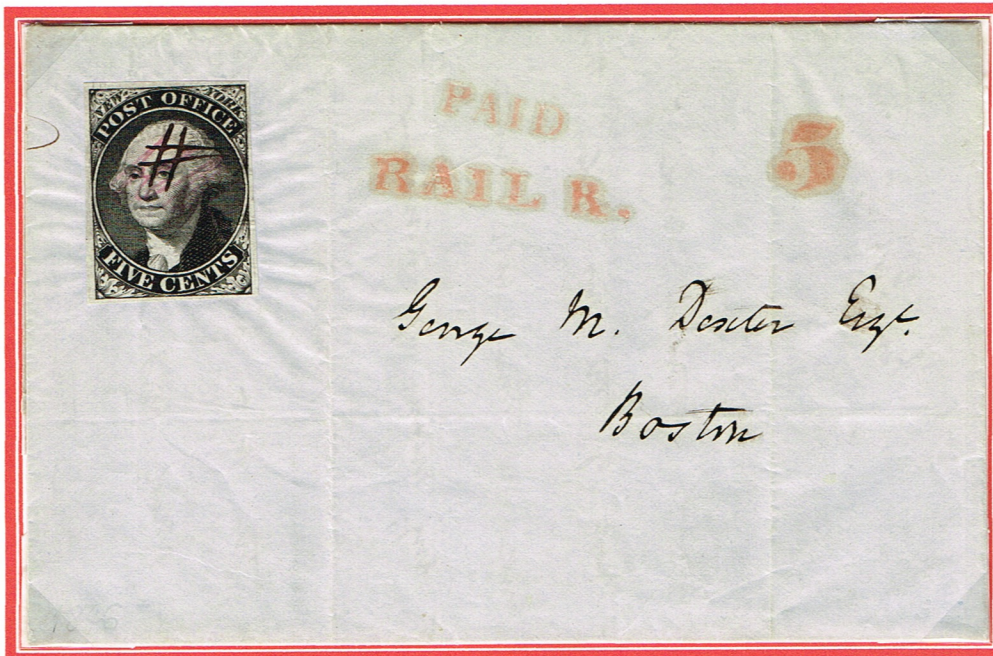
August 20, 1845

Railroad Markings

Letters sent on railroads leaving New York were often put directly on the train, and not postmarked at the NY post office. Markings are either those applied at the destination or by route agents.

The Only Recorded Cover with Long Island RR Route Agent Markings

Pos. 38
"ACM"



New York to Boston, Mass.

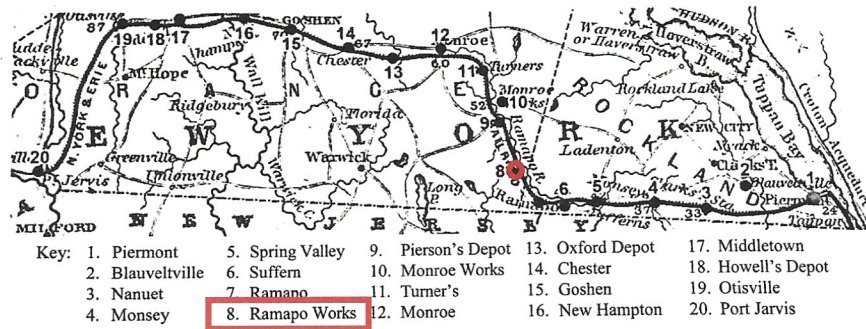
Dated February 7, 1846

The rate of 5c was for a letter of up to ½ oz. sent up to 300 miles.

This letter was carried from New York City through the Atlantic Avenue Tunnel, then by an eastbound Long Island RR (LIRR) train to Greenport, Long Island, and from there by LIRR steamboats connecting with railroad lines to Boston.

Built in 1844, the Atlantic Avenue tunnel is the world's oldest subway tunnel. It accommodated two standard gauge railroad tracks beneath the streets of Brooklyn. From Aug. 1844 - Feb. 1847 the LIRR owned and operated a small fleet of steamboats, which traveled across Long Island Sound between the eastern terminus of the LIRR at Greenport and the Connecticut rail terminals of the Norwich & Worcester Railroad at Allyn's Point, and the New York, Providence & Boston Railroad at Stonington.

Railroad Markings



"ACM"
Pos. 23

Large red "5" applied
by N.Y. & Erie R.R.
route agent.

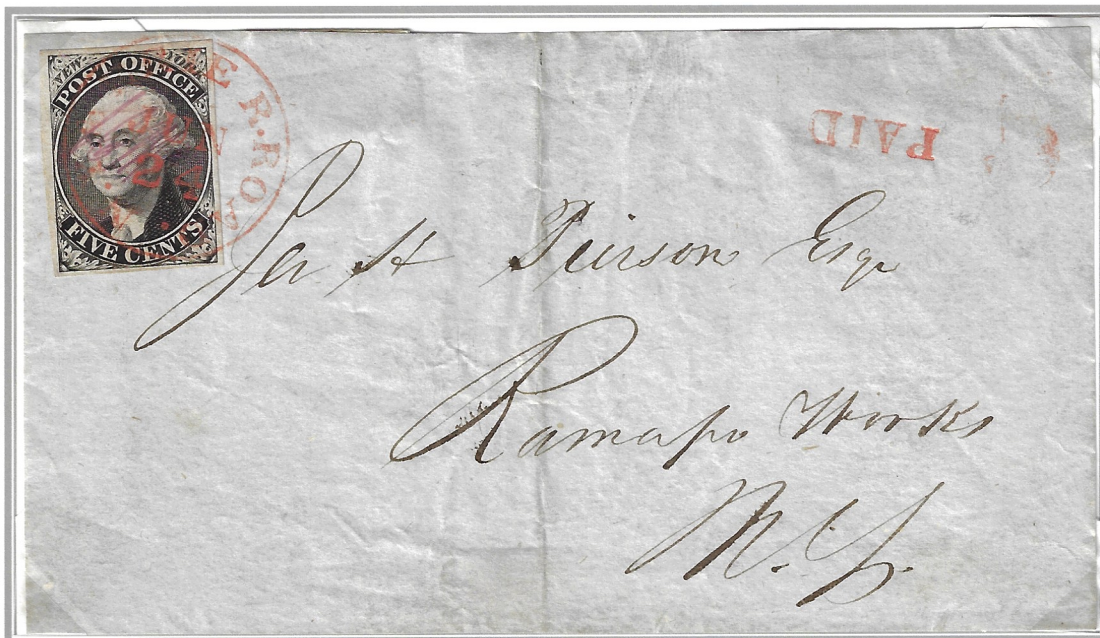
5

Map of N.Y. & Erie R.R.,

(courtesy of U.S. Contract Mail Routes by Railroad 1832-1875, Hugh V. Feldman)

One of Three Recorded Covers with the New York & Erie R. Road CDS

"ACM"



(front)

New York to Ramapo Works, NY.

June 24, c. 1846

The rate of 5c was for a letter of up to 1/2 oz. sent up to 300 miles.

Via a Hudson River steamboat to Piermont, NY and from there by the NY & Erie RR to Ramapo Works.

Railroad Markings

One of 7 Recorded Covers with the N.Y. Express Mail Marking



Pos. 3
"ACM"
No periods

The rate of 5c was for a letter of up to 1/2 oz. sent up to 300 miles.

New York to Bolton, Mass.

September 1, 1845

One of 4 Recorded Covers with NY-Philadelphia RR Markings



Pos. 17
"ACM"

The rate of 5c was for a letter of up to 1/2 oz. sent up to 300 miles.

This is the earliest recorded usage of the blue NY with the agent on board, as postal employees were not on board trains until the end of January, 1847.

New York to Philadelphia, Pa.

Dated February 5, 1847

APES 105117

Use from Outside New York City

On July 12, 1845, Postmaster Morris sent the following letter to the postmasters of Boston, Philadelphia, Albany and Washington, D.C.

My dear Sir:

I have adopted a stamp which I sell at 5 cents each... The accompanying is one... Should there by any accident be deposited in your office a letter directed to the City of New York with one of my stamps upon it, you will mark the letter unpaid the same as though no stamp was upon it, though when reaches my office I shall deliver it as a paid letter. In this manner the accounts of the offices will be kept as now, there can be no confusion, and as each office is the judge of its own stamps there will be no danger from counterfeits.

Robt. H. Morris, P.M.

Other postmasters evidently became aware of these new stamps as well.

One of 7 covers from Hamburg, NY with the "RHM" control marking



Pos. 11

New Hamburg, NY to New York, NY

September 6, 1845

The rate of 5c was for a letter of up to ½ oz. sent up to 300 miles.

Use from Outside New York City

One of 2 Recorded Covers sent from Philadelphia

Pos. 12
"ACM"

The rate of 5c was for a ½ oz. letter sent up to 300 mi.

The adhesive was placed on the letter in Philadelphia, but since the stamp was not valid for postage there, the letter was struck with the blue Philadelphia integral rate CDS, indicating 5c due. Upon arrival in NY, the stamp and letter were struck with a curved red "PAID", indicating acceptance as valid postage.

PFC 527871

Philadelphia, Pa. to New York, NY

May 25, 1846

Fewer than 10 Recorded Intact Covers sent from Boston

Pos. 19
"AC M"

The rate of 5c was for a ½ oz. letter sent up to 300 mi.

An agent for Howland & Aspinwall stamped the letter, but since the stamp was not valid for postage in Boston, the letter was struck with the Boston CDS and rated "5" in magenta manuscript, indicating 5c due. Upon arrival in NY, the stamp was cancelled with an "X" and struck with a curved "PAID", indicating acceptance of the adhesive as valid postage.



PFC 104032

Boston to New York, NY

November 8, 1845

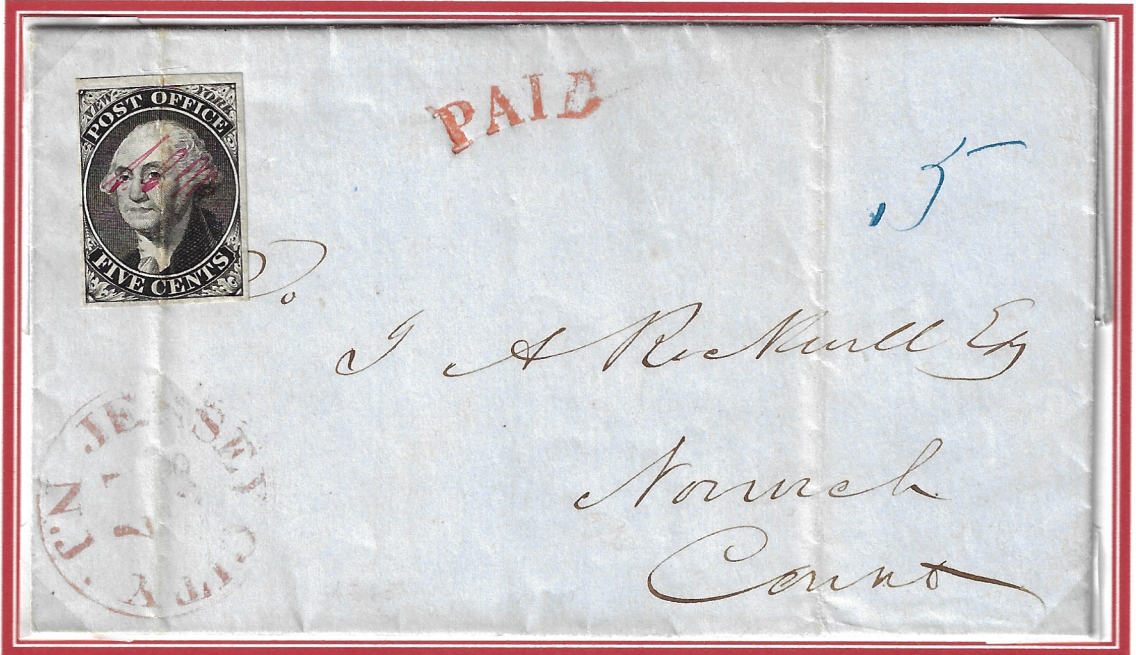
Use from Outside New York City

The Only Recorded Cover sent from Jersey City, NJ

Pos. ?
"A.C.M"

The rate of 5c was for a 0-½ oz. letter sent up to 300 mi.

The letter was date-lined in New York, but not posted and rated "5" until the writer reached Jersey City, across the Hudson River. It passed through NYC, where it was marked "PAID" and sent to Norwich.



PFC 47108

Jersey City, NJ via New York City to Norwich, Conn.

September 17, 1845

One of 2 Recorded (and available) Covers sent from Albany, NY

Pos. 4-5
"AC M"

The rate of 10c was for a ½-1 oz. letter sent up to 300 mi.

The other available cover bears a single stamp and was posted on Nov. 15, 1845.

There is a third cover in the Peltz Collection at the Albany Institute of History and Art. It is dated May 11, 1847.



PFC 217493

Albany to New York, NY

November 11, 1845

Use From Outside New York City

Triple Rate Cover Sent from Boston

Pos. 31/36
"A C M"

Pos. 22
unsigned



PFC 216462

Boston to New York

November 12, 1845

The rate of 15c was for a 1-1½oz. letter sent up to 300 miles.

This cover is considered one of the two most outstanding with the New York Postmaster Provisional stamp used from another post office. The other has a pair on a cover from Philadelphia sent on April 26, 1846 via New York to Montreal, Canada..

Railroad Marking

Letters sent on railroads leaving New York were often put directly on the train, and not postmarked at the NY post office. Markings are either those applied at the destination or by route agents.

One of 4 Known Covers with NY-Philadelphia RR Markings



“ACM”

PFC 507180

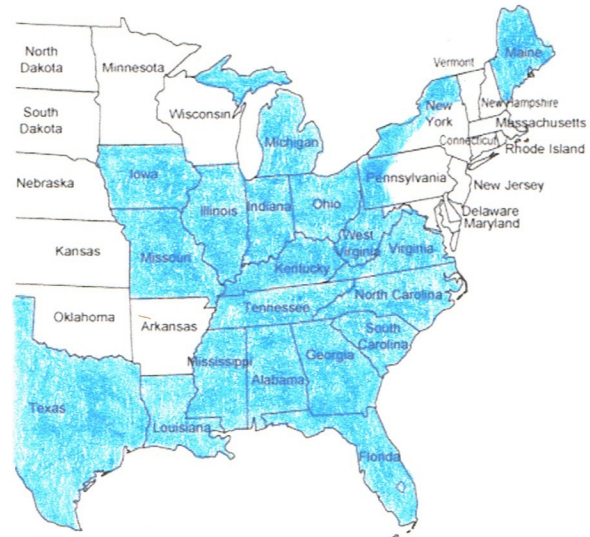
New York to Philadelphia, Pa.

datelined May 18, 1846

The rate of 10c was for a ½-1 oz. letter sent up to 300 miles.

This letter was franked with a single NY Postmaster Provisional adhesive and rather than being taken to the post office, it was sent *via* steamboat and railroad to Philadelphia. There was no official route agent until January 1847, so the conductor may have cancelled the stamp and handed the letter to the post office in Philadelphia. Since the Philadelphia postmaster was aware of these stamps and that 5c was paid at NY, it seems most likely that he accepted the stamp and then re-rated it as a triple weight letter with an additional 10c due (“5” plus “5”). It is possible, however, that he did not accept the stamp and rated it as a double weight letter. The additional weight is accounted for in the letter as it states “enclosing fourteen dollars + an order for 4 Sets Piano Ivory No. 1”.

This stamp is known to have been sent over 300 miles to cities and towns in Maine; Northern and Western New York; Western Pennsylvania; the Southern states of Virginia, North and South Carolina, Georgia, Alabama, Mississippi, Louisiana, Kentucky, Tennessee and Texas; and the Midwestern states of Ohio, Indiana, Illinois, Michigan, Iowa, and Missouri.



The states (or portions of them) that received these over 300-mile letters are shaded in light blue.

Pos. 2-3
"ACM"

**Sent to Northern
New York State**

The rate of 10c was for a letter of up to ½ oz. sent over 300 miles.

New York to
Waddington, NY
November 24, 1846



Pos. 9
"ACM"

**Sent to Western
New York State**

Underpaid

The rate of 10c was for a letter of up to ½ oz. sent over 300 miles.

New York to
Dansville, NY
July 9, 1846



Sent to Virginia

Pos. 21- 22
"ACM"

The rate of 10c
was for a letter of
up to 1/2 oz. sent
over 300 miles.



New York, NY to Richmond, Virginia

April 25, 1846

Sent to Ohio

Pos. 1/6
"ACM"

The rate of 10c
was for a letter of
up to 1/2 oz. sent
over 300 miles.

Note that only
~11% of pairs on
cover are in a
vertical format.



PFC 514715

New York, NY to Lower Sandusky, Ohio

March 23, 1847

Sent to Indiana



Pos. 7, 8
"ACM"

The rate of 10c was for a letter of up to ½ oz. sent over 300 miles.

New York, NY to Peru, Indiana

July 17, 1846

Sent to Michigan



Pos. 23, 28
"ACM"

The rate of 10c was for a letter of up to ½ oz. sent over 300 miles.

New York, NY to Detroit, Michigan

February 4, 1847

Sent to Missouri



unsigned

The rate of 10c was for a letter of up to ½ oz. sent over 300 miles.

New York, NY to Fayette, Missouri

December 11, 1845

One of 5 Covers Sent to Kentucky

Pos. 16-17
"ACM"

The rate of 10c was for a letter of up to ½ oz. sent over 300 miles.



PFC 523855

New York, NY to Hopkinsville, Ky

December 10, 1845

The Only NY Provisional Recorded Sent to Mississippi

“ACM”

The rate of 10c was for a letter of up to ½ oz. sent over 300 miles.



New York, NY to Natchez, Mississippi

May 24, 1846

One of 3 Covers Sent to Georgia



Pos. 14
“ACM”

Underpaid - “Due 5”

The rate of 10c was for a letter of up to ½ oz. sent over 300 miles.

New York to Augusta, Georgia

October 21, 1846

One of 2 Covers Sent to Tennessee;
the Only Twice-Forwarded Provisional

Pos. 27, 28
"ACM"

The rate of 10c
was for a letter of
up to ½ oz. sent
over 300 miles.



New York to Bolivar, Tenn., forwarded to Brownsville and Jackson

September 9, 1845

Sent to North Carolina

Pos. 31-32
"ACM"

The rate of 10c
was for a letter of
up to ½ oz. sent
over 300 miles.



New York to Fayetteville, N.C.

January 1, 1847