

# Ten Cent Stamp

Type I

Relief 'C'

The imperforate 10 cent stamp was issued in the spring of 1855 to pay the new over 3,000 mile rate as well as international rates. One plate, plate 1, produced all the imperforate stamps. There was only one state of plate 1. Three reliefs were used, responsible for type I, type II, and type III stamps. Type IV stamps are recut positions. The ten cent stamp was only available for 24 months before perforations were applied, one-third of the time for the first three values.



Type I stamps have the bottom complete. But the outer line above the top label as well as the outer lines above the 'X' in ovals are missing. All type I stamps are produced from relief 'C' and are only from the bottom row of both panes. Twenty out of two hundred positions (10%) produced type I stamps.



Unused OG.



Position 100L.



Position 91R



Position 92L



Dark green.  
Position 98L

Cover from Lowell MA  
to Columbia CA.

Stamp paying the over  
3,000 mile rate to  
California via Panama.



Mr. E. Otis Blake  
Columbia  
California



Charge box 113 -  
Fayette Hewitt Esq  
Elizabeth Town  
Kentucky

Cover from Yreka CA to  
Elizabeth Town KY.

Stamp paying the over  
3,000 mile rate from  
California via Panama.

Charged to box 113;  
stamp most likely  
applied by postmaster.





Type II

Type II stamps show the full design at top, have the outer line at bottom broken in the middle and the shells partly cut away. Type II stamps were produced from relief 'A' and come from rows 1, 2, 4, 6 and 8 of both the left and right pane. Ninety-three positions (46%) are type II.



Unused OG.

Left margin imprint.  
Double transfer.  
Position 51LRight margin imprint.  
Position 60R

Straddle pair. Positions 20L and 11-12R

'Red Aachen Franco'  
boxed transit and black  
town postmark.January 1857 New Orleans town postmark. Left stamp shows  
strongest double transfer on plate. Positions 31-34L

Position 10R



Red cancel.

New York Ocean Mail type III cancel. Right stamp double transfer.  
Positions 17-20R

Position 1R



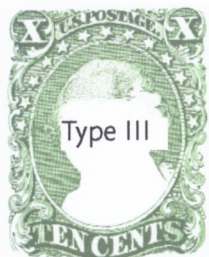
Black dots cancel.



Positions 19-20L

Decorative lady's cover from Stockton CA to Indian Orchard MA.  
Stamp pays greater than 3,000 mile rate.





Type III stamps have the tops cut away as in type I and the bottom cut away as in type II. Type III stamps come from rows 3, 5, 7 and 9 of the left and right panes as well as three positions in row 1. The row 1 positions are misplaced reliefs. Seventy-nine positions (40%) are type III.



Largest recorded strip of type III stamps.  
Positions 83-90R



Unused. Misplaced Relief. Position 2L



Left margin imprint.  
Position 41L



New Orleans black town postmark.



Guide line.



Fancy pinwheel cancel



Red paint Mobile AL town postmark.



Incoming steamship letter from an unknown origin that entered the mail in New York City to Lynchburg VA. Positions 86-87R





Positions 16-17, 26-27L



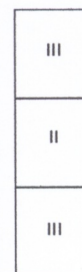
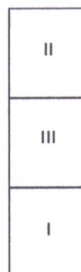
Blocks with type II top and type III bottom



Positions 19-20, 29-30R  
Top right double transfer.



Positions 79, 89, 99L



August 1856 cover from Narrowsbough NY to Vienna Austria. The letter left New York on American packet *Washington* 9 August arriving in Southampton 23 August. Stamps paying the 30 cent rate to Austria.





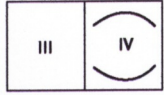
Type IV stamps are type II or III stamps that have their outer lines at the top or bottom or both recut. Eight positions are recut: three at the top only, three at the bottom only, and one both top and bottom. Two positions recut at top are also recut over the 'X's.

All eight type IV positions are present in this exhibit.



Unused original gum.  
Position 3R1

The misplaced relief  
only recut position from  
the right pane.



Position 63-64L.  
64L only position recut top and bottom.



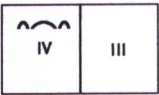
Red paint.  
Position 76L



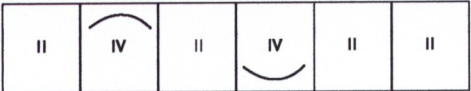
Double rate embossed lady's cover from San Francisco CA to Walden NY.  
Positions 86-87L. Recut top including over each 'X'.



Position 74L



Positions 73-78L.



Recut top label and over both 'X's  
Recut top label  
Recut bottom label





IV ( )	IV ( )	II
IV ( )	IV ( )	III

Left block type IV, right vertical pair type II and III.  
Positions 54-56, 64-66L  
Only recorded block of four of all type IV stamps.



October 1856 folded letter from New York to Glogau Prussia. Left New York on October 11 on the Collins Line packet *Baltic* arriving in Liverpool 22 October. Middle stamp is 'curl in head' variety. Positions 84-86L

III	III	IV ( )
-----	-----	-----------



Five Cent Stamp



Unused OG.

The imperforate 5 cent stamp was issued in early 1856. There was no compelling reason to issue the 5 cent stamp but it was applied to foreign rates such as British Open Mail or the 1857 French treaty rate. The stamps were issued perforated during 1857 leaving the imperforate stamps an active lifespan of fewer than eighteen months. There is only one type. There are two plate varieties, a double transfer and a defective transfer. There are far fewer 5 cent stamps than other values.



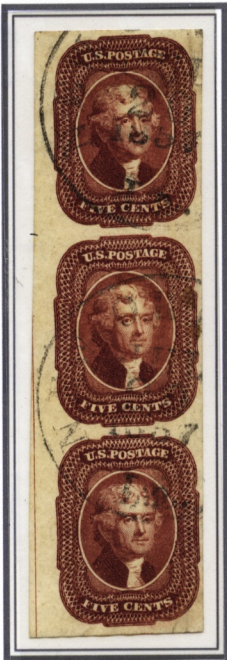
Reconstructed block of eight (two blocks of four)



Partial imprint. Philadelphia town postmark.  
Double transfer on far right stamp. Positions 37-40R



Wilmington DE town postmark.



Inner-pane line.  
New Orleans town postmark.  
Positions I, II, 21R



New Orleans town postmark.



## Five Cent Stamp



Black town postmark  
from Yankee Jim's CA.



Blue town postmark  
from Colima CA.



Black Boston 'PAID' grid.

Two pairs both used from California mining towns



Partial imprint.  
Position 51L.



Partial imprint.  
Position 50R.



Pre-printing  
paper fold.



Defective or damaged  
transfer.  
Position 23R



NY Steamship.



NY Ocean mail.



Belgian accountancy.  
Inter-pane line.



Black town postmark.



New Haven CT circle  
of diamonds



Brown town cancel.



Blue town cancel.



Red Trenton NJ  
town postmark



Red and black cancels.



Red grid cancel.



As more and more stamps were being used the inconvenience of cutting them out individually sent many searching for better approaches. Soon the Post Office Department would move to perforated stamps as they had in England.

New York City



'Sewing Machine' roulette perforations. Stamp type II. Position 47L2



Rouletted perforations. Stamp unused type IV.

November 1855 folded unsealed circular from New York City to Bamansville Canada West. The 1 cent rouletted stamp paid postage to the border. 1d due in Canada.

Bergen NY



Cancel digitally removed and image enhanced to show perforations. 1.3x



Sawtooth roulettes gauge 9 to 10. Produced by the postmaster. April 1857 cover from Bergen NY to Andover CT. Claret position 91L7





One of five recorded covers with 1 cent Chicago perforations. Earliest documented use.

29 May 1856 unsealed circular from Chicago IL to Exeter MA.

e

Two of four recorded covers with Chicago perforations used outside of Chicago.

Cover from Fort Des Moines IA to New York City.



e



21 July 1856 folded letter from Boston MA to Fisherville TN.

e



## Section Two: Domestic Rates & Postal Markings

Under 3,000 Miles

### Domestic Letter Rates

Single 3 Cent Rate

The domestic rates introduced in July 1851 were 3 cents under 3,000 miles and 6 cents over 3,000 miles. The 6 cent rate was later increased to 10 cents. The drop rate was 1 cent and circular rates were 1, 2, 3, 4 and 5 cents depending on distance, later reduced to 1 cent for all distances. This section shows the stamps used for the different rates and a variety of auxiliary markings and fancy cancels.

#### Second day of issue



July 1851 folded letter from New York City to Walpole NY.

Stamps positions 98-100L<sup>E</sup>. canceled with New York square grid.

Early printing position 100 is type II. Later printings are type IIIa.

#### First day of issue



Both the paid and unpaid under 3,000 mile basic rate on one letter.

1 July 1851 folded letter from Geneva NY to Rochester NY. On 2 July forwarded to Litchfield CT.

'5' manuscript 5 cents due for forwarding unpaid. Mailed on first day of issue for the 3 cent stamp and forwarded on the second day of issue.

Stamp is orange brown position 69R<sup>E</sup>.





March 1853 folded letter from New York City to Philadelphia PA. Double rate paid with diagonal bisect.  
Bisect accepted by both the New York and Philadelphia post offices.



Cover from Columbia TX to Washington DC. Transfer of 5 cent stamp image to envelope due to fold.  
1 cent stamp type IV. 5 cent stamp right margin showing the center line.



# Domestic Letter Rates

Under 3,000 Miles  
Underpaid Double Rate

Before 1 January 1856 unpaid rates charged at 5 cents per half ounce. After 1 January 1856 there was no longer an unpaid rate. 3 cents per half ounce charged for overweight as well as forwarding.

Before 1 January 1856



June 1852 folded address sheet from Boston MA to New York City. The letter was between 1/2 and 1 oz. 3 cent stamp underpaid the double rate. Due 5 cents. 'Due/5 cts' making in circle used in Boston between March 1853 until July 1854.

Double transfer 'GENTS' shift, with three lines recut in upper left triangle. Position 66R2<sup>1</sup>

After 1 January 1856  
Used on West Coast



August 1856 folded letter from Stockton CA to Sacramento CA. Letter references enclosed contracts.

'DUE' and '3' markings most likely applied in Sacramento.





Cover from  
Potsdam NY to  
Bangor ME.

1 cent type IV,  
3 cent type II.

e

July 1851 folded letter  
from Newport RI to New  
York City.

Stamps positions 1,2R5<sup>E</sup>  
and 12R5<sup>E</sup> type II.



One cent overpayment



January 1857 letter  
from Chicago IL to Fort  
Brown, Brownsville TX.

Chicago 1857 postmark  
with year date.

Stamp type IV position  
54L1 recut at bottom.





December 1856 folded letter from Richmond VA to Raleigh NC. 12 cent stamp pays the four times rate.



August 1856 cover from New Orleans to Catahoula Parish LA. Stamps, 10 cent type II and 5 cent, pay the five times rate.



Domestic Letter Rates  
via Panama

Over 3,000 Miles  
Single 6 Cent Rate

March 1852 cover  
from Marysville CA to  
Painesville OH.  
Stamps type II positions  
75-80Li<sup>e</sup>. Second and  
sixth stamps double  
transfer.



July 1853 folded address sheet to  
Boston MA entered the mail in  
San Francisco. The bisect accepted  
in San Francisco, New York and  
Boston.

The letter left San Francisco  
16 July on the *John L. Stephens*  
arriving in Panama 29 July. From  
Aspinwall to New York on the  
*Georgia* arriving 29 August.  
Integral rate 'PAID/6' postmark.

e

Wreck Mail

November 1853 cover from  
Sonora CA to Kalamazoo MI.  
Carried on Star Route 5062  
to San Francisco. Put on the  
*Steamer Winfield Scott* to  
Panama but was wrecked  
on the Anacapa Islands on  
2 December 1853. Mail was  
recovered and eventually  
sent on via Panama.

Less than 10 examples  
recorded with this Name-of-  
Boat cachet and 1851-1856  
issue stamps.

