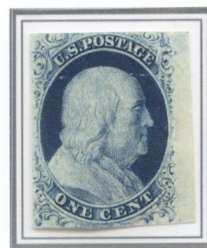


With the increased demand for stamps and the badly flawed plate 2, plate 3 was produced in the spring of 1856 and plate 4 in early 1857. Imperforate stamps from plates 3 and 4 were printed for a short time before the post office department started perforating stamps. **All plate 3 stamps are type II and the plate was not used for perforated stamps.** Plate 3 was taken out of service before plate 4 was made. Plate 4 used a new transfer roll with wider spacing.



Unused OG.
Position 3L3



Unused.
Double transfer.
Position 3oR3



Right stamp double transfer.
Position 89-9oR3



Mottled impression.
Position 46L3



Curl over 'C' of cents'.
Position 23R3

Prussian blue stamp



October 1856 unsealed folded circular from New York City to Richmond VA. Position 41L3
One of two recorded plate 3 stamps on cover showing part of the imprint.



Folded address sheet **boot-legged from Cuba** entering the mail in New York City as a drop letter.
Position 21R3 One of two recorded copies on cover from plate 3 showing center line.



Straddle pair. Right side shows small part of 81R3.
Position 90L3

Many of the stamps of plate 3 show fine cracks that look similar to scratches that most likely occurred during manufacturing. While the cracks may have reduced the life of the plate, the sudden withdrawal of the plate from service was most likely from some other failure.



Left edge surface cracks.
New York integral 'PAID'
datestamp. Position 31L3



Light surface cracks. 'The Warner Strip'.
Positions 97-99L3



Image processed to
show surface cracks
0.8x



Forked lightning crack.
Significant mottling.
Position 33L3



'Big' crack.
Position 8R3

Top Row of the Plate

Plate 4 had wider spacing between the stamps in anticipation of perforating the sheets. This required burnishing the plate between the impressions, leading to new types 1a and 1c as well as existing types II, III and IIIa.

On plate 4, Type II stamps are only found in the top row of the plate.



Unused. Position 10L4



Unused. Positions 1-2R4



Position 5R4



Position 8L4



Position 2R4

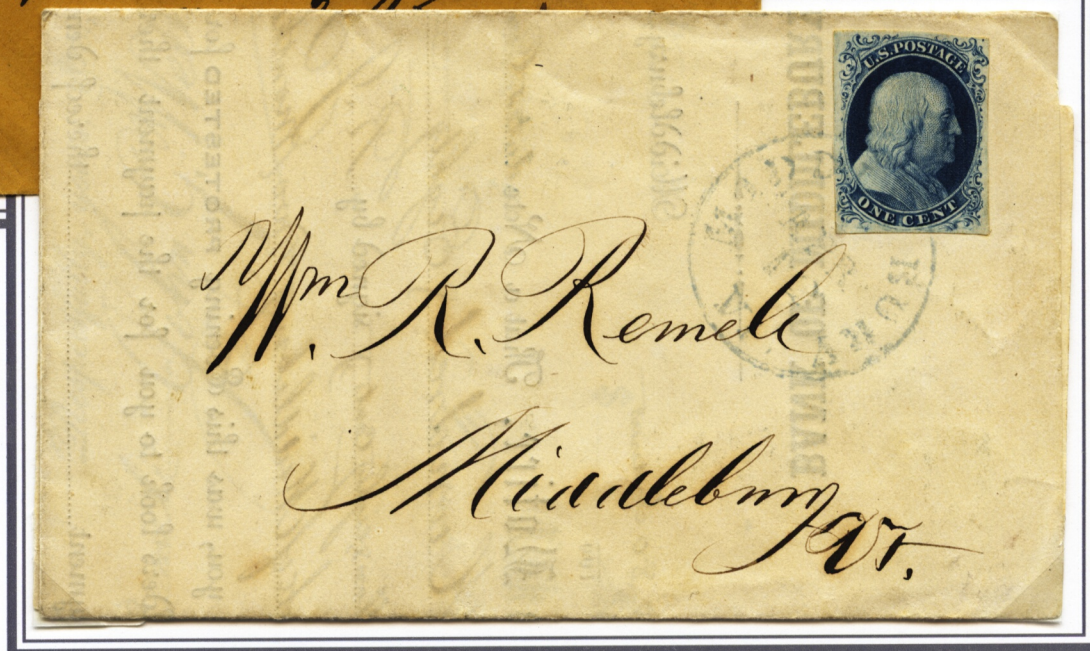


Positions 2-4L4

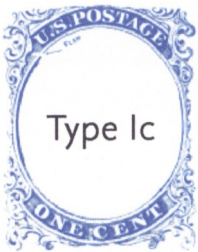


Cover from Binghamton
NY to New York City.
Positions 7-9R4

April 1859 drop letter from
Middlebury VT.
Position 1R4



Types Ia and Ic



Type Ic



Type Ia

Types Ia and Ic are found only on plate 4. Type Ia has a complete bottom with the top ornaments and outer lines cut away. It also has a small plate flaw just outside and below the 'U.' Type Ic is the same as Ia at top but with some re-erasure of the right plume at bottom.



Positions 96-97R4. 96R is best example of a Ic stamp, relief F. Right stamp shows curl in 'C' of 'CENT'.

Ic	Ia
----	----



Type Ia.
Position 100R4

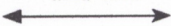


Type Ic.
Position 91R4



Positions 80, 90, 100L4

In combination
with types III
and IIIa



Rock Island IL town postmarks.
Positions 81-83L4

III	IIIa	Ic
-----	------	----



Greenville SC drop letter, embossed lady's envelope. Stamp with curl on shoulder. Type Ic.
Position 81R4



Unused OG
Type III Position 68R4



Type IIIa Position 18R4



Positions 45-46R4. Late printing
showing break at bottom.

III IIIa



Reconstructed strip.
Positions 50, 60, 70R4

IIIa

IIIa

III

'Waving Flag On Pole' Fancy Cancel



Stamps types IIIa, II, III
positions 77L, 2L, 61L4. Right
stamp lifted to show imprint.

Cover from Newark Valley to
Waverly NY.

Position 2L is a type II
position but this stamp has a
clear break in the bottom line.

e

July 1857 unsealed
circular from Albany
NY to Boston MA.

Stamp type IIIa
position 90L4 with
inter-pane guide line.

The circular
announces the
discovery of a minor
"planet".



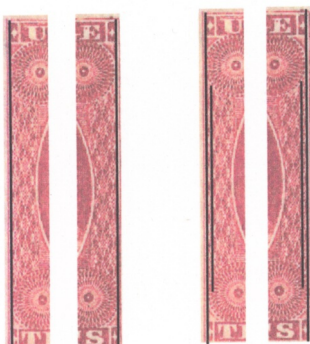
P A I D.

J. I. Bowditch,
Boston, Mass.

The three cent stamp was issued for the 3 cent under 3,000 mile and 6 cent over 3,000 mile rates. It was also used, often in conjunction with others values, to make up international rates.

The orange brown ink was used to print the 3 cent stamps during the last six months of 1851. Plates one in all states, and both plates two, five in the early state and plate o were printed with orange brown ink. An orange brown shade of ink was also used briefly 1856. All these plates shown below.

There are two major types of the three cent stamp, types I and II. The type II stamp has the inner vertical frame line recut.



Type I Type II
Lines above enhanced to show location of
outer and inner vertical frame lines.



Unused OG bottom right corner block.
Type II Positions 77-80, 87-90, 97-100R5^E



Type I Positions 51-53, 61-63L1ⁱ



Very thin part India
paper.
Position 56L1^E



Type II. Deep orange brown.



Type II Position 10Lo



Type II Position 6Ro



Type I Position 31R1ⁱ



Type II Position 88L3



Type II Position 91R2^E

Plates Without Imprints and/or Plate Numbers

Initially 3 cent plates 1 and 5 were engraved without either an imprint or plate number. Plates 0 and 2 were engraved with an imprint but without a plate number. Plate numbers and if absent imprints were added to all plates but plate 0 which never had a plate number, thus referred to as plate 0.

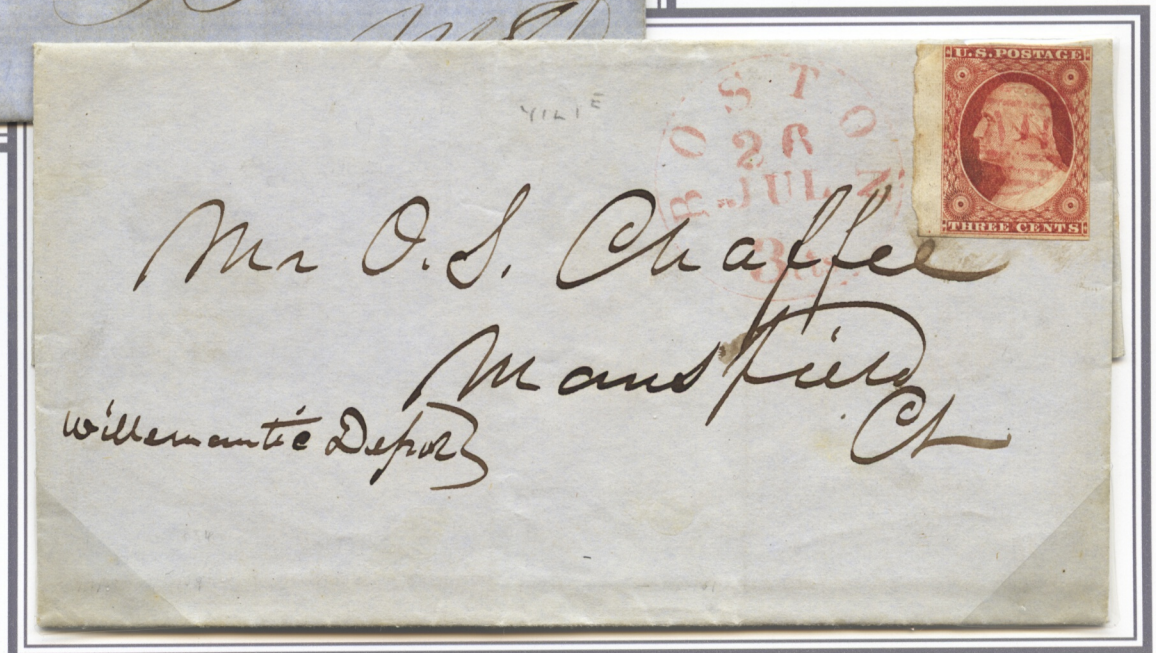


Cover from Wrightsville
PA to Baltimore MD.
Position 6oRr^E.



Position 4oRr^E

There are two recorded covers with stamps from the right pane and one for the left pane showing the absence of both imprint and plate number.



July 1851 cover from Boston to Mansfield OH. Late use of small Boston red 'PAID' in grid used for only 26 days. Stamp pale claret, position 4iLr^E

Plates 0 and 2 initially had an imprint but did not have a plate number.



Position 5iLo



Position 5oR2^E

1851 Experimental Orange Brown Shade

January 1852 cover from Providence RI to Paris France.

The letter left New York 28 January on the Cunard packet Asia, arriving in Liverpool 7 February and Paris 10 February.

Five cents paid, three cents by stamp and two cents in cash.

On reverse boxed handstamp 'LETTRE ARRIVEE/DECACHETTEE' meaning the letter arrived unsealed.

Stamp experimental orange brown position 26Rr¹. This shade is only found on plate 1¹.



Charlottesville VA.



Copper brown shade type II.
Sacramento CA



New York Ship Cancel



Inter-pane line,
large Boston 'PAID'.
Type II Position 40L5^E

1856 Orange Brown Shade



Stamp position 7R4, gash on shoulder variety.

May 1859 double rate cover carried privately by Wells Fargo and Co. from San Francisco to Roseburg OR.



Cover from Housatonic MA to Philmont NY. Blue town postmark.
Five lines recut in the top left triangle. Stamp type II, position 95L1¹



Plate crack positions 74,
84, 94L5¹ type II.
Blue grid cancel.



Worn plate.
Type II Position 2R1¹



Slip or kiss printing
showing doubling at top.
Type II



Red New York City
Supplementary Mail
type A cancel. Type I
Only recorded copy.



Stamps type I. Positions 46-49L4



Right margin imprint.
Type II Position 50R2¹



Type I Position 57R8



Steam Ship.
Type II Positions 31-32L2¹



Red star.
Type II

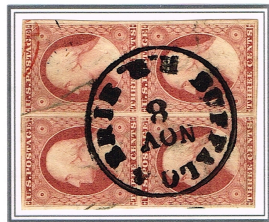
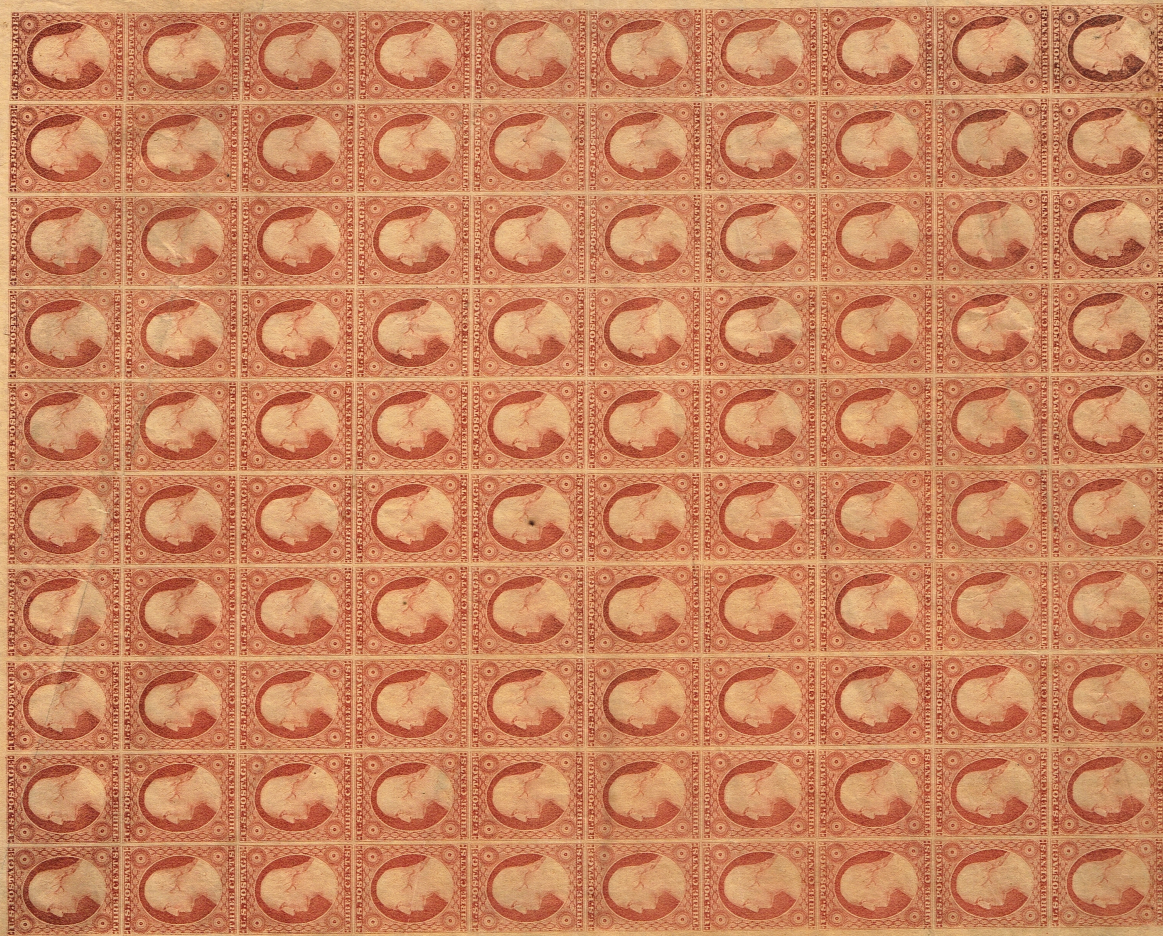


Type II Position 57L3

Three Cent Stamp

Dull Red

Plate 3 right pane.
Original gum.



Buffalo & Erie Railroad route
agent handstamp.

Type II. Positions 12-13, 21-23R24

Margin copies from plate 4 showing different "states" of the
plate, with and without plate numbers



Early printing showing imprint
without plate number.
Position 514



Later printing with plate
number added but reversed.
Position 514



Later printing with plate
number correctly placed.
Position 5084

Corner Margin Copies



Type I. Position 187



Type I. Position 10017



Cover from Urbana OH to Peoria IL. Position 1082 dull red type II stamp.
Largest recorded margins on a 3 cent stamp: 17 1/2 mm top and 16 mm right.

Brownish Carmine



Unused OG brownish carmine
part imprint type II



Unused OG brownish carmine.
Type I



Brownish carmine reconstructed block of eight from two blocks of four
with blue Oberlin OH town postmarks. Type I Positions 31-34, 41-44R7

Pinkish



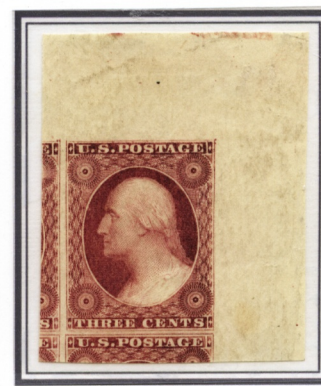
Type II Position 91L5^L



Claret major plate crack.
Type II Position 94L5^L



Straddle pane.
Stitch watermark. Type I
Positions 100L6 -91R6



Unused.
Type I Position 10R6



Embossed cover from Orrville to Salem OH. Stamp color is deep purplish claret. Type I



Unused OG reconstructed block of six. Claret.
Type I Positions 65-67, 75-77R4

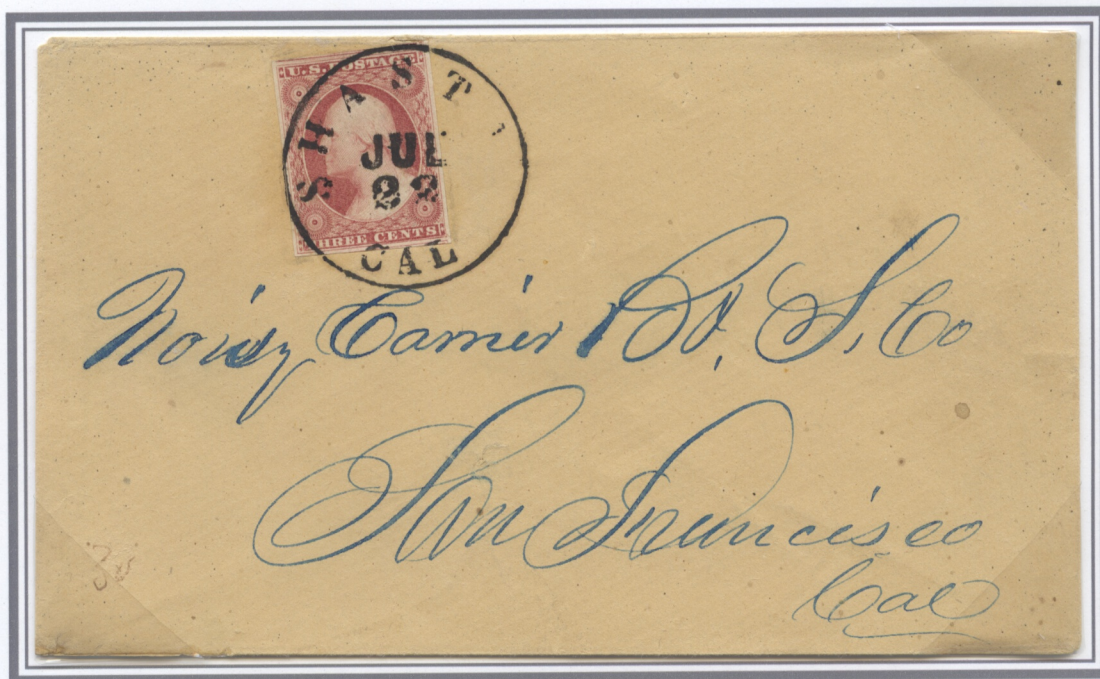
1856 Yellowish Rose Red

The yellowish rose red shade was delivered with plates 4, 5¹, 6, 7, 8



Blue and red silk threads.

Plate 7 left pane.



Cover from Shasta to San Francisco CA. Stamp pays the under 3000 mile rate within CA.

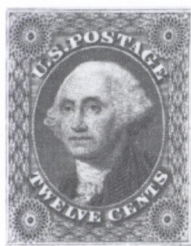
1857 Plum Shade

The plum shade was delivered with plates 2L, 3 and 4.



February 1857 folded address sheet from New Orleans LA to New York City. Stamps pay quadruple under 3,000 mile rate. Type II Positions 42-45R2¹ Largest recorded multiple of plum shade.

Twelve Cent Stamp



The imperforate 12 cent stamp, issued to provide domestic multiple rates and help make up foreign rates. The stamp was printed from one plate that had two states. About 2.5 million stamps were printed. There were approximately one hundred times more three cent stamps than twelve cent stamps printed and thus far fewer available today.

One relief was used for the entire plate. Most positions on the plate had the frame lines recut. There was also recutting in the lower right and left corner. About 12% of the positions show a double transfer.

Two states of plate one



Initial state of plate with no imprint.
Unused OG. Positions 61-62, 71-72Li



Position 51Li
showing imprint.
Later state of the
plate.



Eleven bar circular grid.
Positions 7-10, 17-20, 27-30, 37-40Li



Philadelphia PA town postmarks. Positions 81-84, 91-94Ri



Left block positions 87-88, 97-98Li. Right block positions 85-86, 95-96Li.
These two blocks, on piece were cut from a single block.

Twelve Cent Stamp



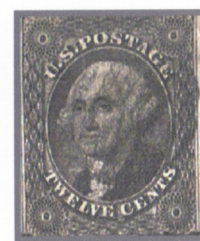
Unused OG.
Position 81L



Positions 10R / 20R



Printed on both sides.
Reverse side shown.
1 of 3 recorded



Front
Position 7R
1.2X



Straddle shows stamp
from left pane and partial
stamp from right pane.
Positions 60L and 51R



Very thin paper.
Blue cancel.



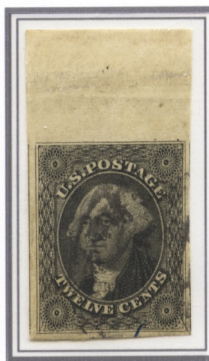
Pre-printing paper fold.
Position 96L



Late state showing imprint.
Positions 70 / 80R



Blue 'AMERICA'
transit marking.
Positions 80 / 90L



Position 6L



Positions 97-99R



Position 91R



Position 1L



Positions 37-40L



Double transfer.
Position 3R



Red grid. Double transfer.
Position 4R



Triple transfer.
Position 5R



Double transfer.
Position 9L



Blue and red Cincinnati
town postmarks.
Position 9R



Right stamp shows scratch on head
variety. Positions 43-44R



British '10' receiving mark



Red '19'. Positions 93-94R



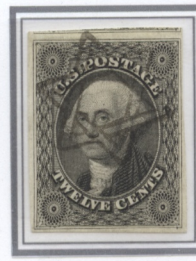
Red '10' in circle.
Position 71R



Black Star.



Red 'PAID/24'. Right stamp double
transfer. Positions 66-67R



Chicopee star.
Position 68L



Blue Cincinnati OH
town postmark.
Position 19L

December 1856 cover from
Richmond VA to London
England. Pair of stamps pay
the 24 cent rate to England
on Collin's packet *Atlantic*
from New York and arriving in
Liverpool 2 January. Red 3 cent
credit to Britain.

Stamps positions 49-50R. Stamp
on right shows small amount of
imprint. 1 of 3 recorded covers
showing any part of the imprint.

