



September 1848 folded address sheet from Tallahassee FL to New York City. Very early and strong strike of the green grid of dots cancel clearly showing the dots.



New Years Day 1848 folded letter sheet from Middletown CT to Philadelphia PA. Blue grid of diamonds.





February 1848 cover from East Hampton to Conway MA.



Blue grid of small squares.  
Orange brown stamp.



April 1851 folded letter from Burlington to Keokuk IA. Red grid of diamonds.





3 bar blue grid.



December 1848 cover from Portsmouth NH to Governor Colby in New London NH. The letter entered the mail on the Eastern Railroad. Manuscript 'Via Boston'. The Eastern Railroad traveled between Portsmouth and Boston.

Black 5 bar grid  
Housatonic R.R.2 strikes of rimless red  
six bar grid.5 bar segmented blue  
grid.6 bar blue rimless  
rectangular grid.7 bar grid with bars  
not reaching rim.

8 bar red grid.

11 bar blue  
rimless grid.12 bar blue rectangular  
rimless grid.13 bar red grid  
Brattleboro VT.17 bar grid  
Hudson River Mail  
Type A Double Transfer.



8 bar rim-less grid with  
three crisscross strikes  
on a dark russet stamp.

December 1850 folded  
letter from Taunton to  
New Bedford MA.



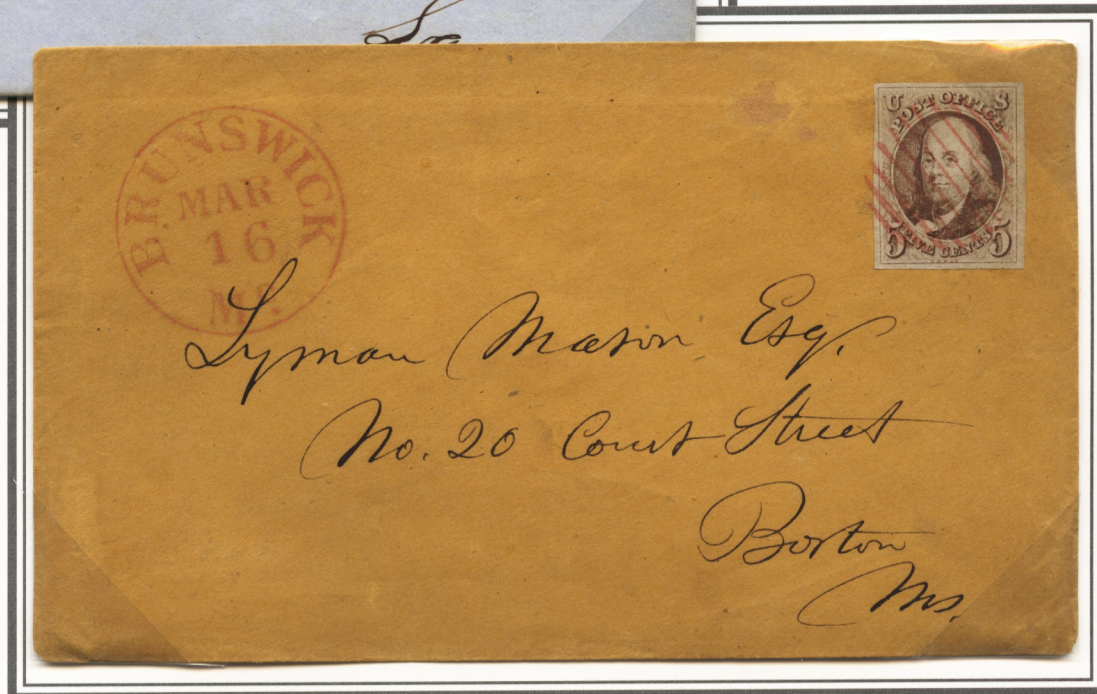
11 bar rim-less grid.

Cover from Brunswick  
ME to Boston MA.

Brunswick received no  
1847 stamps.

Two strikes of blue 13 bar open  
grid cancel the stamp.

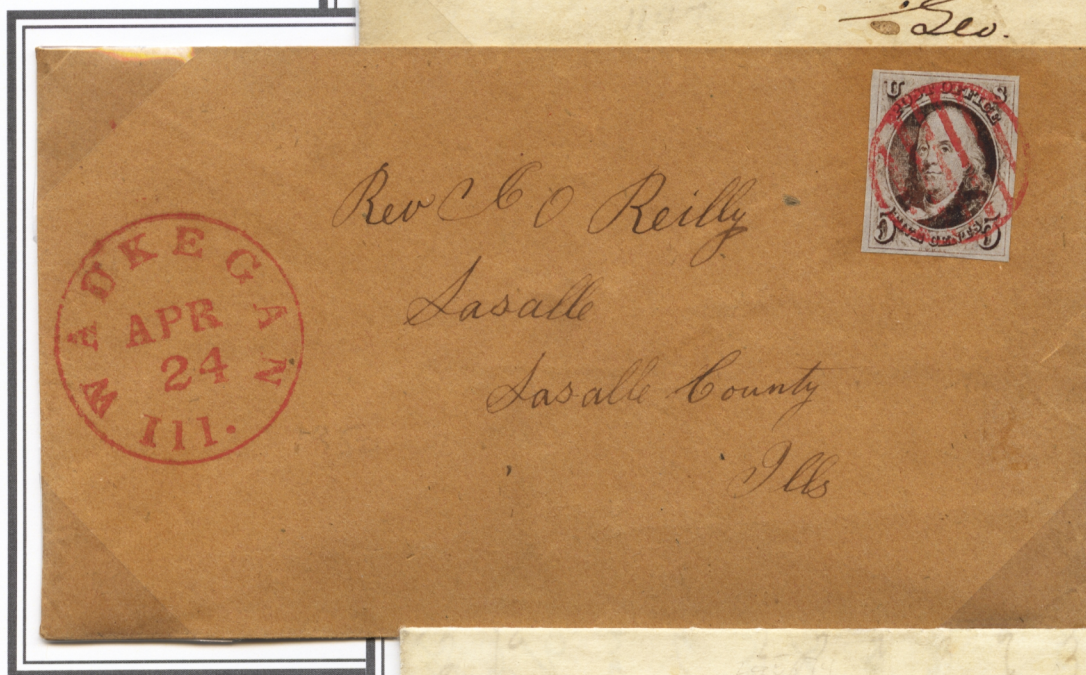
June 1851 folded letter from  
Minden to New Orleans LA.





Blue 9 bar rim-less grid.

December 1847 folded  
letter from Sparta to  
Warrenton GA.



Red 6 bar grid.

Cover from Waukegan to La  
Salle IL.

Red unframed 9 bar grid  
struck twice to create  
crisscross canceling right  
margin 10 cent stamp.

February 1848 folded letter  
from West Stockbridge MA  
to Ravenna OH.







Norwichtown 7 bar rim-less grid cancels stamp.

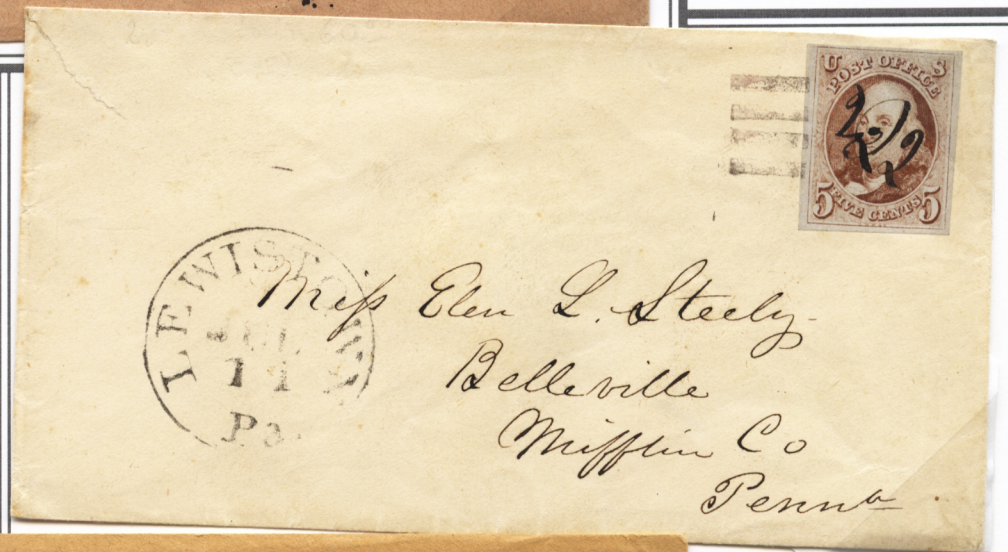
Cover from Norwichtown CT to Wilkes Barre PA where it was forwarded to Harrisburg PA.

The Wilkes Barre Postmaster applied the manuscript 'For'd' and a '5' indicating 5 cents fee due for forwarding.



Rim-less blue 7 bar grid from Norwich CT.

4 bar grid and elaborate pen cancel. Cover from Lewistown to Belleville PA.



Red grid of squares.

Black rectangular grid of 25 small squares cancel the stamp. Cover from Wilkes Barre to Tunkhannock PA.

One of two recorded 1847 issue covers with this grid of squares cancel.





### Section Three - Domestic Rates and Uses



This section shows rates, auxiliary markings and practices of the post office. The single, double, triple, quadruple, Panama and west coast rates. Bisected uses, overpaid drop letters, printed matter and propaganda covers are included. Auxiliary markings and uses are shown including registered, forwarded and hotel markings.

Only recorded cover showing the use of both a 5 and 10 cent 1847 stamp to pay the two different basic domestic rates on the same letter



February 1850 folded letter from Buffalo to Albany NY. From Albany the letter was forwarded to Albion NY. The 10 cent stamp pays the postage from Buffalo to Albany, a distance over 300 miles, and the 5 cent stamp pays the forwarding postage from Albany to Albion, a distance of under 300 miles.



Not to exceed one half ounce

5 cents up to 300 miles, 10 cents over 300 miles



Portion of folded address sheet from Chicago to Oregon City IL.  
Under 300 miles and under one half ounce (single rate).



November 1850 cover from Apalachicola FL to North Fairhaven MA. Stamp postion 64R.  
Although Florida had been a state since 1845, the postmaster continued to use the territorial town postmark.



## Paying 5 cent rate with Bisected Use of the 10 Cent Stamp

The Post Office Department never authorized the use of bisected stamps for postage. Some postmasters accepted this practice while others did not.

August 1850 cover from Concord to Manchester NH. Blue grid cancel and Concord town postmark.



June 1851 folded letter from New York City to Carbondale PA.

August 1850 cover from Portland ME to New Haven CT.

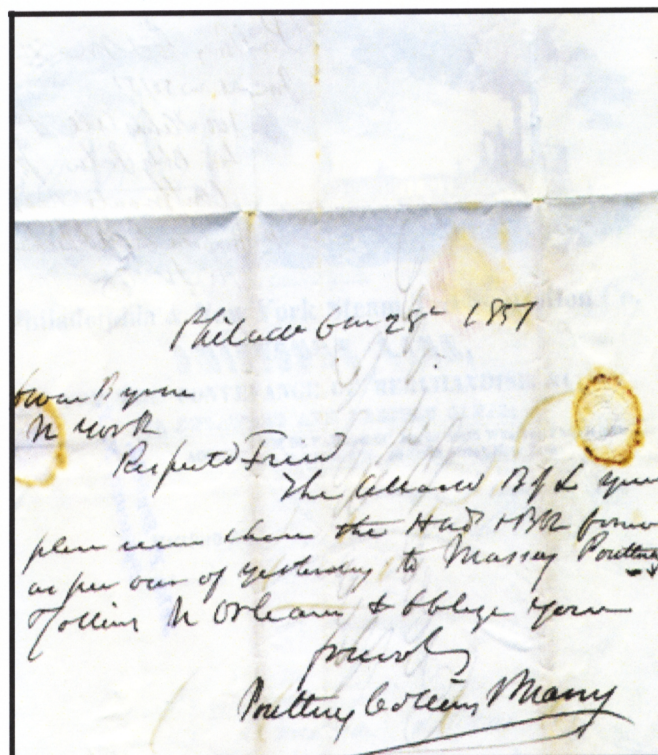
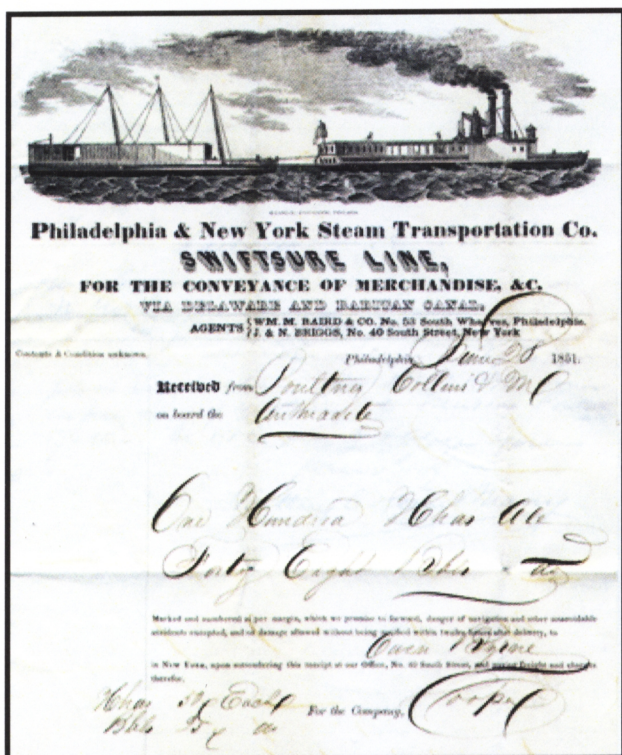




Paying 5 cent rate with Bisected Use of the 10 Cent Stamp



28 June 1851 folded letter written in Philadelphia and addressed to NYC. Carried outside the mail from Philadelphia on a barge, along the Delaware and Raritan Canal, with a load of ale and porter (dark beer) headed to New Orleans.



42% actual size



From the famous 'Turner' correspondence where occasionally the stamps were overlapping.

60% of the 52 recorded covers from the correspondence have one 10 cent stamp.



One of two recorded  
with overlapping  
10 cent stamps.  
Canceled on  
Christmas Eve.  
Positions 61, 62L.





Between one half and one ounce

10 cents up to 300 miles, 20 cents over 300 miles



August 1849 double rate folded letter from Boston MA to Collinsville CT. Manuscript 'under 1 oz paid'. Addressed to Collins & Co. the largest axe manufacturer in the nineteenth century.



Double rate September 1849 folded letter from Montgomery AL to New Orleans LA. Positions 95, 96L. Traveling along the Great Southern Mail Route the letter went by stage and steamboat from Montgomery to Mobile on Star Route 5581 and then to New Orleans by steamboat on Star Route 5612.





June 1851 folded letter from Rochester to New York City NY.  
The bottom stamp in both pairs with stitch watermarks.



October 1850 cover from New York City to Lockport NY.



The postmasters in Boston and Enfield identified the underpayment and indicated that 10 cents was due. The partial payment of 10 cents was accepted.



November 1847 letter from Boston MA to Philadelphia PA. The Boston postmaster added the large '20' in circle and the manuscript 'unpaid 10' indicating that 10 cents was to be collected from the addressee.

One of three recorded examples of the large '20' in circle from Boston.

Postmarked 29 February - 1848 was a leap year



February 1848 folded letter from Enfield MA to Philadelphia PA. Postmaster indicated underpayment by clearly show 10 cents had been paid and 10 cents is to be collected and 20 cents was the total postage.

The year, 1848, was the only leap year when the issue of 1847 was valid to pay postage.



Between one and one and a half ounce

15 cents up to 300 miles

The triple rate was only in effect from 1 July 1847 until 3 March 1849.



Cover from New York City to Alexandria VA. Vertical strip of three 5 cent stamps paying triple rate under 300 miles.  
 One of two 5 cent vertical strips of three on cover. Only recorded domestic use of a vertical strip of three.



From Boston MA to Philadelphia PA paying triple rate over 300 miles. U.S. Express Mail route agent datestamp.  
 Stamps positions 41-43R, the left stamp is a **Double Transfer type D**.



## Section Three

## Quadruple Rate Letters

Between one and one half and two ounces before 3 March 1849

20 cents up to 300 miles

Between one and two ounces after 3 March 1849

40 cents over 300 miles

The triple rate was eliminated 3 March 1849 the quadruple rate expanded to include one ounce to two ounces.

Folded address sheet  
from Pottsville PA to  
New York City.  
Most likely August 1849.  
Paid 3x rate that was no  
longer valid.



August  
1849 folded  
address sheet  
from New  
Haven CT  
to New York  
City.  
Positions 90  
and 100R pay  
Quadruple  
under 300  
mile rate.



Folded address sheet from Philadelphia to Pittsburgh PA. Four individual stamps positions 45L, 75L, 91L 71L paying over 300 mile rate.