

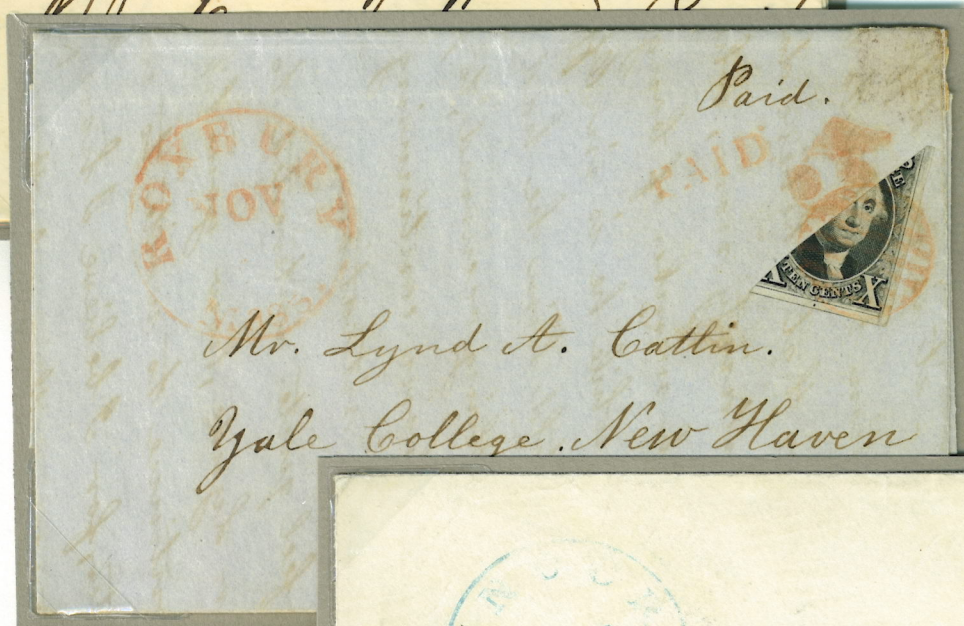
D. Bisects

UL - FE 13, 1851,  
Concord, NH  
to Warner, NH. *e*

UR - MY 27, 1851  
to Hampton, IL. *e*

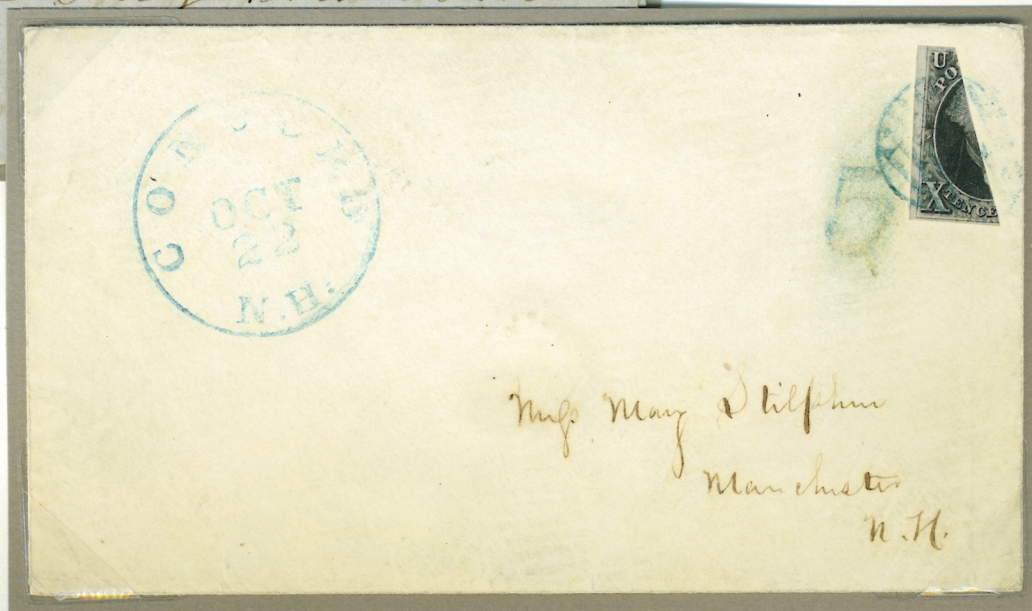
*Three 10¢ covers are  
recorded from Mineral  
Point, WI. All are bisects.*

Diagonal - The Four Corners



LR - NO 1, 1849  
to New Haven, CT. *e*  
*Only 10¢ cover recorded  
from Roxbury, MA.*

LL - OC 22, 1850  
to Manchester, NH. *e*





## D. Bisects

## Diagonal, Vertical & Horizontal - Scarcity Factor

The usual mode of bisecting the 10¢ was diagonally. This method is found on 80% of existing covers. While the number known of left and right halves of diagonal bisects are roughly the same, known right vertical halves outnumber left vertical halves by two to one.



*One of no more than seven genuine covers with left vertical halves*  
MR 23, 1849 to New Hope, PA. e



*The only recorded horizontal bisect in private hands*  
MY 29, ?? - Franklin, LA. e

**No genuine horizontal bisects on cover are recorded in private hands.**



## Section Four: The Domestic Usages

### A. Domestic Mail

1. 5¢ per ½ oz. < 300 miles

Single Weight Rate - up to ½ oz.

#### Domestic rates during the validity of the 1847 issue.

Effective July 1, 1845 to June 30, 1851

2¢ - drop letter rate

5¢ - per ½ oz. prepaid or collect < 300 miles

10¢ - per ½ oz. prepaid or collect > 300 miles

40¢ - per ½ oz. prepaid or collect to the Pacific Coast

Effective July 1, 1847

3¢ - < 1 oz. - unsealed circulars

Effective March 3, 1849

Triple and other odd rates eliminated

**Red brown** - AU 24, 1849,  
Baltimore drop letter. Overpaid 3¢.  
*One of ten recorded*



**Red brown** - FE 19, 18?? to Northcastle, NY. 5¢ up to ½ oz. e

*A matching Valentine is known posted on the same day and addressed to Miss Green's sister Ann.*



A. Domestic Mail  
1. 5¢ per ½ oz. < 300 miles

Double Weight Rates - up to 1 oz.



NO 9, 18?? to Lancaster, PA.



MY 1, 1849 to Demopolis, AL. e



A. Domestic Mail

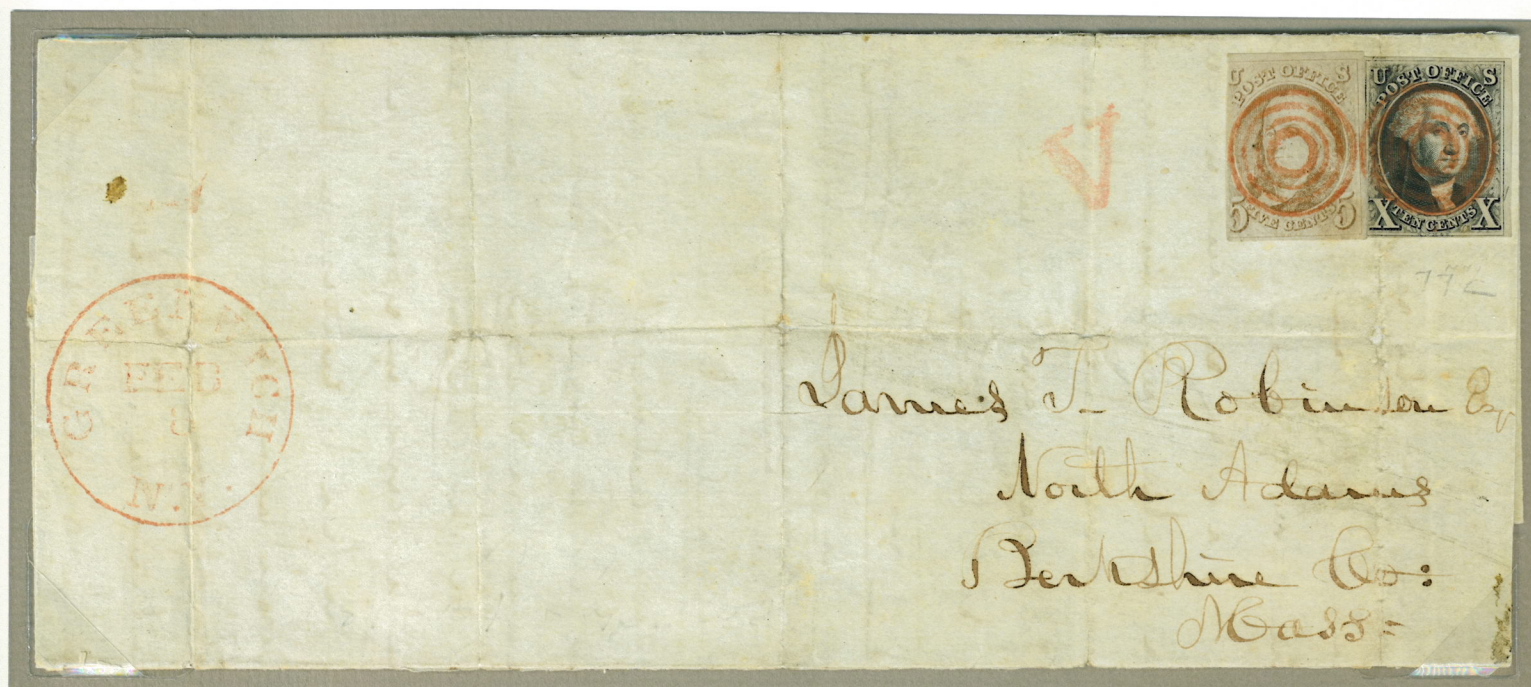
1. 5¢ per ½ oz. < 300 miles

Triple Weight Rate - up to 1½ oz.

Quadruple Weight Rate - up to 2 oz.



Triple weight rate - AU 18, 1847 to Lockport, NY. *e* (lightened pen cancel)



Quadruple weight rate

5¢ red brown from late impression - 10¢ - Position 77L

FE 8, 1851 to North Adams, MA - 5¢ due from the addressee. *e*

Although weighing between 1 oz.-1½ oz., the Post Office Act of March 3, 1849 eliminated triple and other odd rates. Prior to the Act this would have been a triple weight rate letter.



A. Domestic Mail  
1. 5¢ per ½ oz. < 300 miles

Quadruple Weight Rate - up to 2 oz.

*Only recorded corner margin  
strip of four on cover*

Positions 97-100R



JY 21, 18?? to Providence, RI.



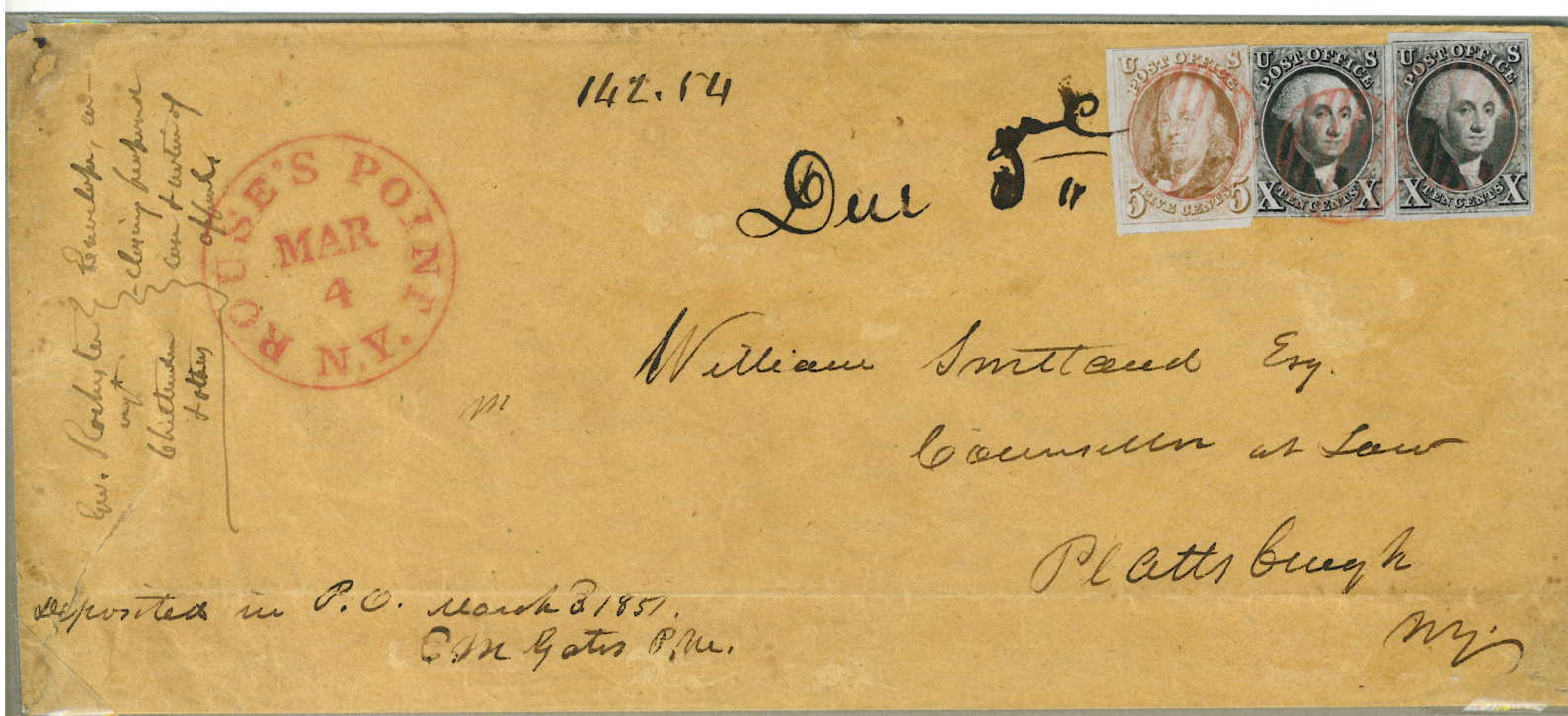
1. 5¢ per ½ oz. < 300 miles

**Sextuple Weight Rate - up to 3 oz.**

M L Burrill Esq  
Covington Or  
Lockport



Quintuple weight rate - MR 3, 1848 to Lockport, NY. *e*



Sextuple weight rate - MR 4, 1851 to Plattsburgh, NY - 5¢ due.

*The only 10¢ and combination cover from Rouse's Point, NY*

The Postmaster confirmed by endorsement that the letter was posted a day earlier after the mails were closed. Prior to March 3, 1849 this would have been a quintuple weight rate letter.



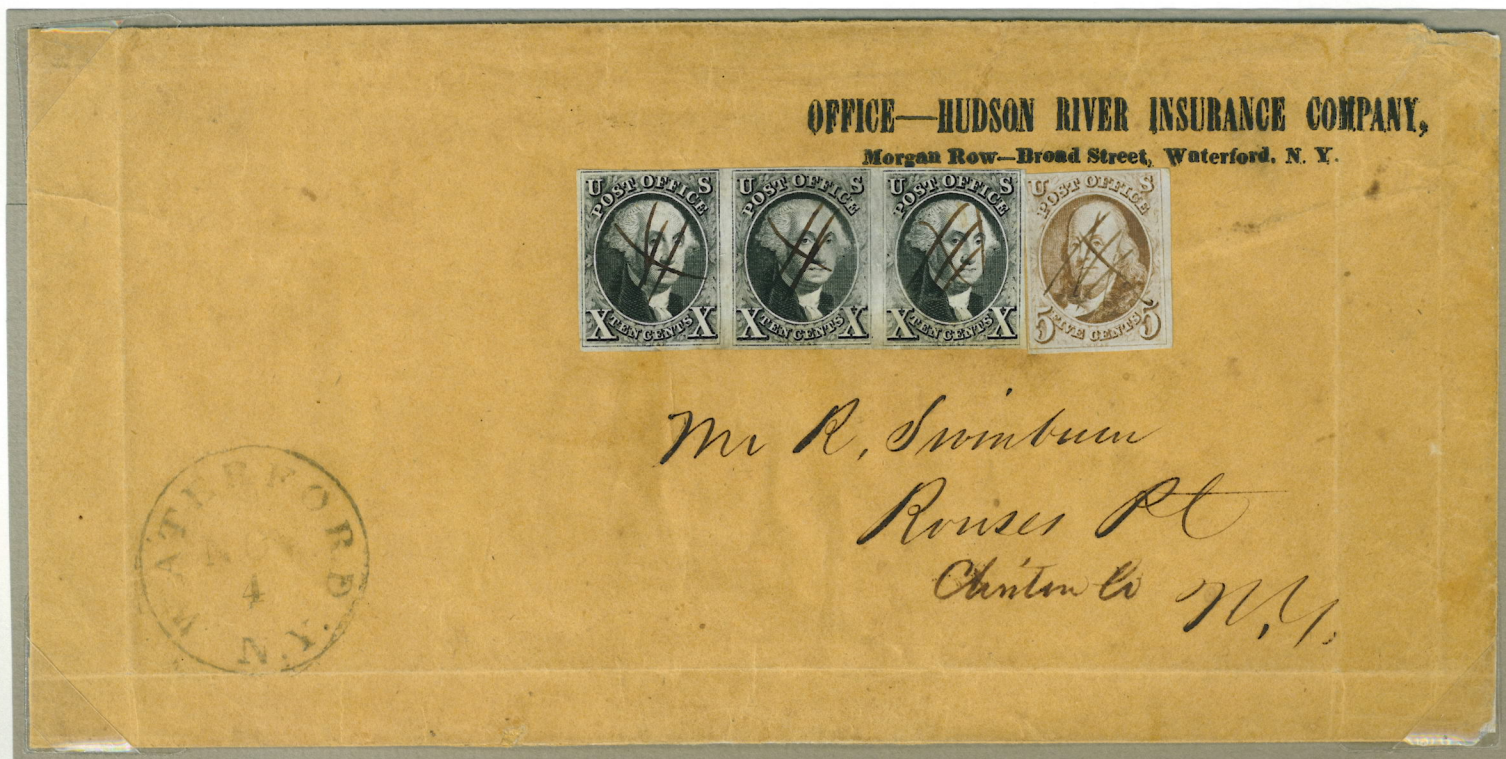
A. Domestic Mail  
1. 5¢ per ½ oz. < 300 miles

Sextuple Weight Rate - up to 3 oz.  
Septuple Weight Rate - up to 3½ oz.

*The only two covers recorded fully paying these rates*



Sextuple weight rate - **Positions 8, 48 and 46R** - JU 24, 1848 to New York, NY. *e*  
Northampton, MA did not receive any 10¢ stamps.



Septuple weight rate - **NO 4**, 1848 to Rouse's Point, NY. *e*  
Waterford, NY received no stamps of either denomination.  
*The only 10¢ and combination cover from Waterford, NY*



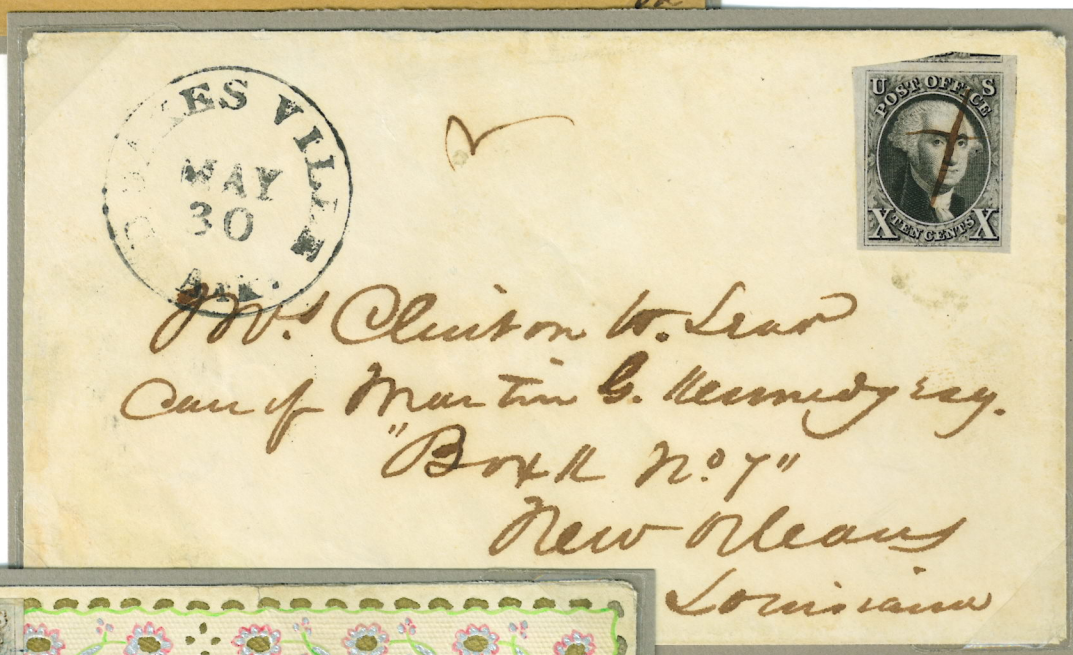
A. Domestic Mail  
2. 10¢ per ½ oz. > 300 miles

Single Weight Rate - up to ½ oz.



*The only recorded  
cover from the  
Minnesota Territory  
FE 12, 1851 to  
Philadelphia, PA. e*

*One of seven 10¢ covers  
from the Indian Territory  
MY 30, 1850  
to New Orleans, LA.*



*FE 5, 18?? to Carthage, MS. e*



A. Domestic Mail

2. 10¢ per ½ oz. > 300 miles

Double Weight Rate - up to 1 oz.



Positions 53-54R - SE 5, 1849, Boston, MA to Philadelphia, PA.



Two shades of stamps: two dark brown and two orange brown stamps.

OC 2, 1848, Boston, MA to Baltimore, MD. e

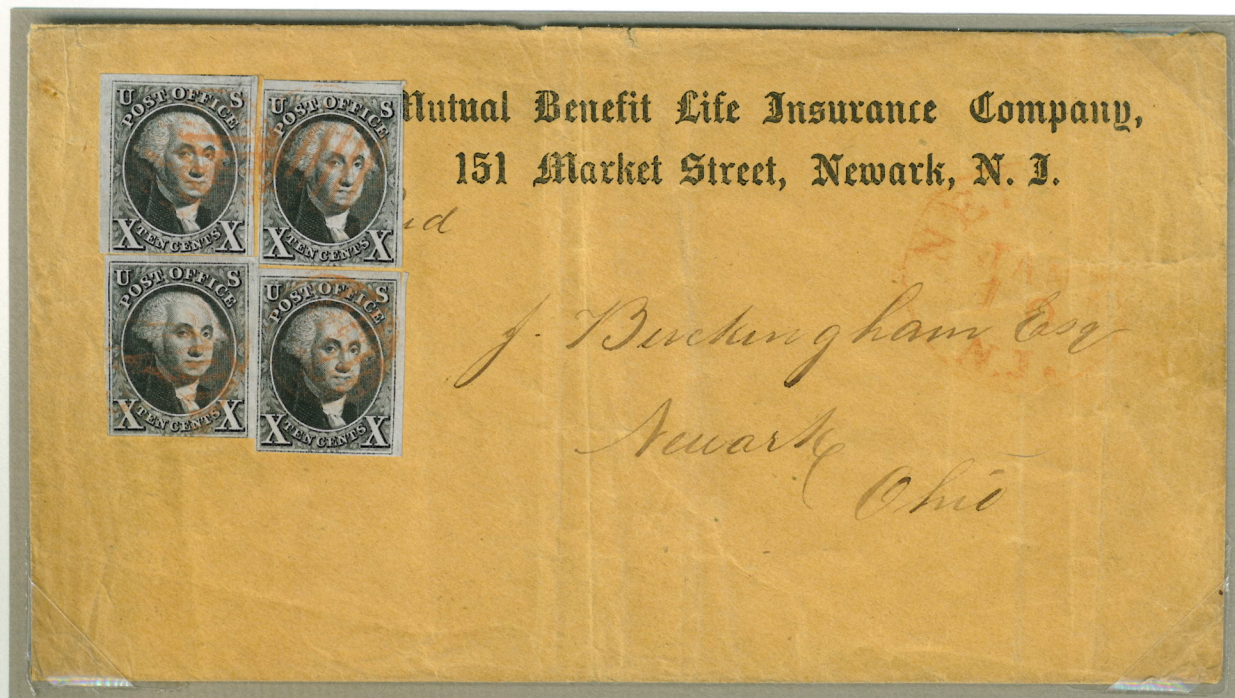


A. Domestic Mail

2. 10¢ per ½ oz. > 300 miles

Quadruple Weight Rate - up to 2 oz.

Quintuple Weight Rate - up to 2½ oz.



Quadruple weight rate - JA 10, 18?? to Newark, OH. e

No 10¢ block exists on cover, these four singles, configured as a block, are the closest thing to it.



Quintuple weight rate - NO 4, 18??, Mobile, AL to Washington, DC. e

Positions 16-20L



A. Domestic Mail

2. 10¢ per ½ oz. > 300 miles

Sextuple Weight Rate - up to 3 oz.

Positions 26L, 41-45L

*One of the largest  
1847 frankings*



JU 1, 1851

Inglehart, OH to Baltimore, MD.  
Posted on the Little Miami Railroad  
at one of its stops between  
Cincinnati and Springfield, OH.

*One of two 10¢ covers recorded  
used from this railroad agent*



A. Domestic Mail  
3. California

Forty-Cent California Rate  
To and From California

By the August 14, 1848 Post Office Act, the 40¢ per ½ oz. rate for mail to Oregon was made applicable to letters to and from California which had become United States territory under the provisions of the Treaty of Guadalupe-Hidalgo, proclaimed July 4, 1848. The rate is a combination of the 10¢ per ½ oz. > 300 miles rate plus the 30¢ “Via Panama” rate.



OC 10, 1850, to Stockton, CA.

*Eight covers to California with four 10¢ stamps are recorded*



Positions 83-86L - JA 1, 1851 to New York, NY. e

*The only recorded cover from West to East*



## B. Auxiliary Postal Services

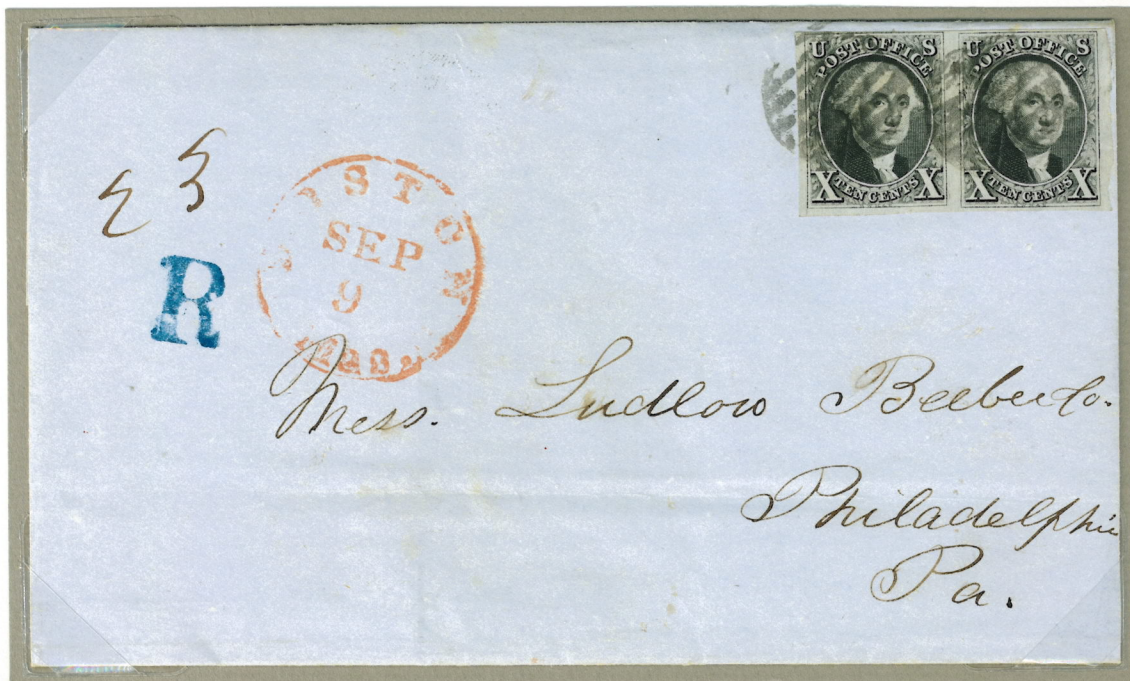
## Unofficial Philadelphia Registry

### 1. Registration

There was no official registered mail service in the United States before July 1, 1855. However, the Postmaster at Philadelphia established an informal numbered recording or registration system for incoming mail known to contain valuables, marking such letters with a large blue "R".



No registration number - AP 11, 18(50) to Philadelphia, PA.



Registration number 23 - Position 4-5R - SE 9 18(50) to Philadelphia PA. e  
> 300 miles double weight rate up to 1 oz.

Two "R" markings are recorded during the 1847 period. A large "R" until October 1849 and again in June and July 1851. The small "R" was applied between October 1849 and September 1851.



**B. Auxiliary Postal Services**  
**1. Registration**

**Unofficial Philadelphia Registry**

Based on the few recorded registered Philadelphia covers extant and their dates of posting, it is likely the Postmaster restarted numbering letters at number 1 when he reached 100. No covers bearing numbers above 100 are recorded.



AP 18 (#95) 1850 to Philadelphia, PA.  
From the Mechanics Bank of Baltimore containing checks for collection.

*Only recorded 1847 example of the registered marking applied at point of origin*



MR 29, 1851, Wilkes-Barre, PA to Philadelphia, PA.  
Straightline Registered applied at Wilkes-Barre and blue "R" and registration #25 applied on arrival at Philadelphia.



B. Auxiliary Postal Services  
2. Partially Paid Mail

5¢ and 10¢ Due  
Post Office and Route Agent

Postmasters were vigilant when it came to partially paid mail due to overweight or distance.



MR 13, 1848 to Philadelphia, PA.

Letter arrived without stamp cancelled. The postal clerk rated the cover 10¢ due because of overweight or distance. The clerk then realized that credit should be given for the 5¢ stamp. The 10¢ due mark was overstruck by a 5¢ marking.



FE 15, 1849 to Washington, DC via the Albany and Buffalo Railroad. e  
A circular was enclosed causing the overweight and the 5¢ due charge.

*Addressed to Vice President (later 13<sup>th</sup> President) Millard Fillmore.*