

B. Plate Varieties

Unplated Varieties



Line through
left top of "U".
Orange brown *e*



Lines in top of "O" of
"OFFICE", left stamp.
Pale reddish brown



Line through "S" in
"US", left stamp.
Early impression - Dark brown



Line in bottom
right of "U".
Dark red brown *e*



Plate bruise at right side.
Reddish brown



Plate bruise at right side.
Dark brown



Frame line broken at left.
Reddish brown *e*



Scratch in "O" of "POST".
Pale red brown *e*



Curl in left "5".
Red brown *e*



Curl under "C" of "CENTS".
Red brown *e*



Scratch between "5" and
frame line at right.
Deep reddish brown



Vertical scratch in
lower left margin.
Deep reddish brown *e*



AP 23, 18??
to Cherry Valley, NY.
Vertical scratches in the right "5".

In addition to red, Binghamton, NY "Herringbone" cancels are recorded in black, green and blue and were in use from the beginning of the 1847 period to March 1850. The collection has one of each color. *e*

C. Printing Variations

Slip Printing

Slip prints are also known as “Double prints” or “Kiss prints” and are caused when the sheet slips during printing.



Major doubling of the “5”s
and bottom lettering. *e*
Position 91L - Yellowish brown



Doubling of the lettering in “POST OFFICE”. - Dark brown



Doubling of all the lettering. - Brown

C. Printing Variations



Over inked bottom left "5".
Red brown



Over inked bottom right "5".
Dark brown



Over inked early impression.
Deep brown



Poor impression - Dry printing.
Dark red brown



Incomplete impression at bottom right.
Position 100R - Red brown



Printing ink smear in top margin. - **Red brown**



Horizontal shading lines missing from bottom of stamp due to under inking. - **Dark red brown**

C. Printing Variations

Preprinting Paper Folds

These are caused when paper stock used in the printing has creases in it before the printing impressions are made. When unfolded, they show areas absent of ink.



Red brown e



Incomplete impression at top left
due to fold over – Red brown e



Reddish brown e



Dark brown e



Pale red brown



Dark brown e



JA 2, 1851 written at Louisville, KY posted at Cincinnati, OH to Bremen, Germany via Liverpool (January 20).
Standard 5¢ shore to ship postage rate under the US-UK 1848 Convention.
Carried by non-mail contract steamer to Cincinnati. e

Delivery determined by impression.

Since, according to Calvet Hahn (1927-2004), the Post Office Department had a last-in, first-out policy of sheet distribution to post offices and the plate wore considerably during its use, reliance on the printing impression data is a more accurate guide to deliveries than the methodology using cover dating.

Crisp impression. - 1st delivery - Dark brown - SE 14, 1848 to Hartford, CT. *e*



Poor impression. - 5th delivery - Position 90L - Red brown - FE 10, 1851 to Baltimore, MD. *e*

Very few copies of the 5¢ have clear impressions and, according to stamp dealer and author Lester G. Brookman (1904-71) in *The United States Postage Stamps of the 19th Century, Volume 1*, "the quality of the impressions was due not so much to the condition of the plate as it was the quality of the ink and the skill with which it was used." Because of this, it is not possible to plate the stamp as extensively as the 10¢ has been.

In each delivery many shades exist.

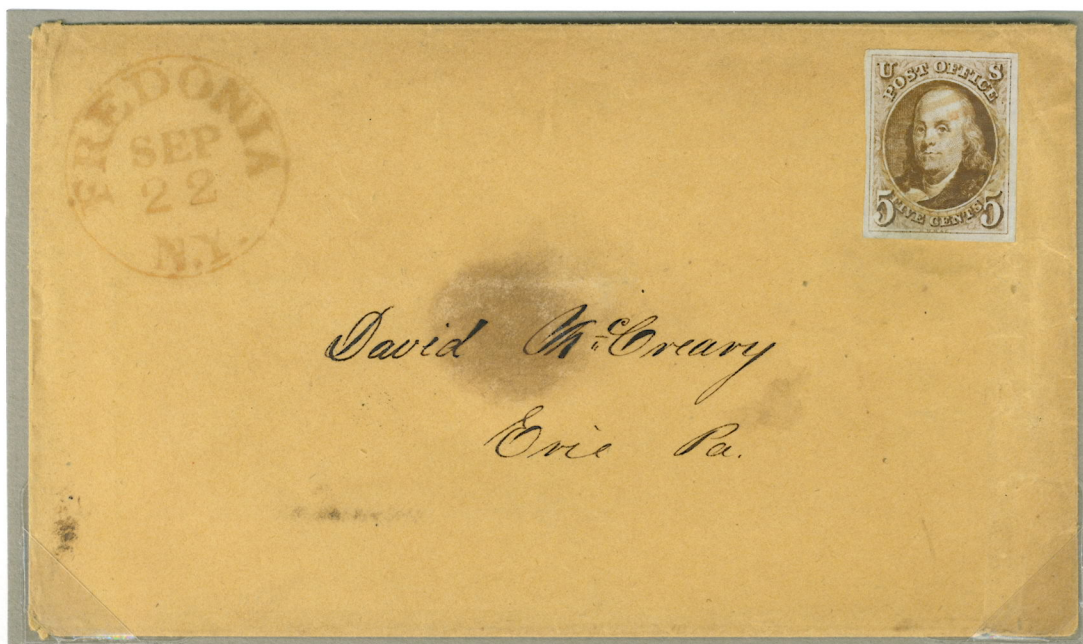
The brown color selected for the stamp was obtained by mixing several ink pigments. A formula existed but the tolerances were quite liberal. In addition, environmental issues, measurement of quantities and adjustments during each printing could account for many of the shades. The very rich shades originate from inks that would concentrate in storage or from ladling the bottom of the pigment container.



Early impression.
Dark brown with red tint. e



Late impression.
Orange e



Cinnamon brown - SE 22, ?? to Erie, PA. e

New shades.

Previous students limited their color nomenclature to 15 shades although admitting that there were more slight shades and tints. The colors in this exhibit are identified with the aid of Robert Ridgway's *Color Standards and Nomenclature* and derive from the seminal work of Wade Saadi.

Reason for the change of impressions between printings.

The dyestuffs in the ink formula used for the 5¢ were composed of elements that were abrasive to the printing plate. Brown inks, in particular, contained metal oxides that could wear down the fine lines of the engraved plate.

D. Deliveries and Shades

Orange Browns - Grayish Browns

1st Delivery - July 1, 1847 to March 13, 1848

1st delivery impressions - All lines are sharp and clear. Frame lines are always strong and unbroken. Background shading and foliate lines are intense. Position dot in left trifoliate is obvious. Impressions from this delivery appear proof like.

Orange browns - Warm brown shades with an orange cast with more yellow than the red brown shades.

Very bright orange brown *e*



Bright orange brown



Light orange brown



Orange brown *e*



Orange brown *e*

Deep orange brown - SE 4, 1847 to Hagerstown, MD. *e*



Grayish brown - Position 92R *e*



Dark grayish brown *e*

Grayish browns - Dull gray pigments, in varying degrees, tint both brown and red brown shades.

D. Deliveries and Shades

1st Delivery - July 1, 1847 to March 13, 1848

Browns - Red Browns

Browns - Show a little red with some yellow but not to the quantity shown in the brown oranges.



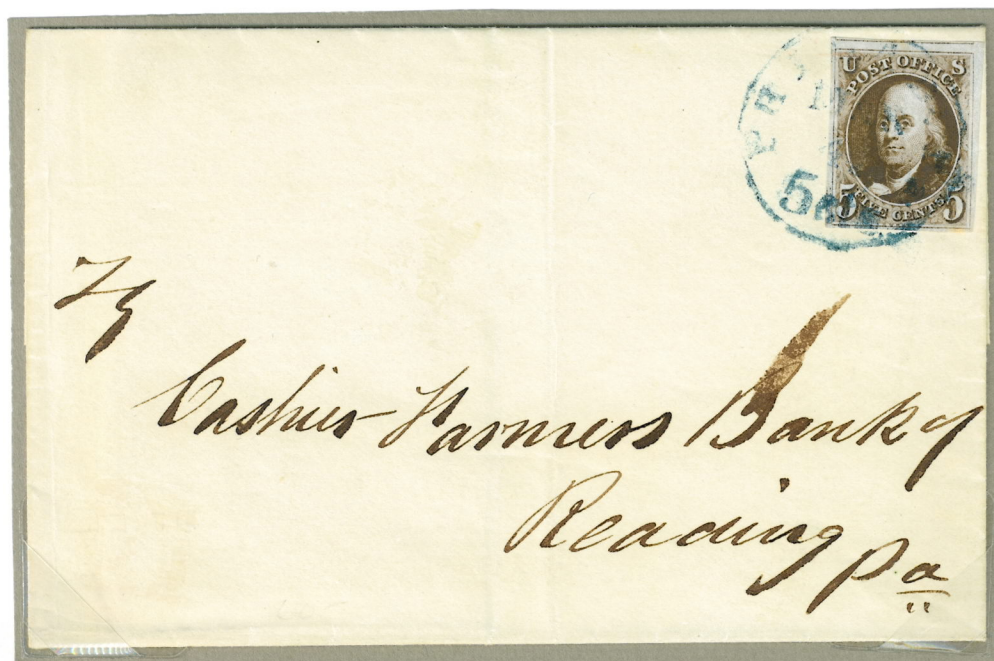
Dark brown *e*



Dark pecan brown *e*



Russet brown *e*



Deep brown *e*



Deep red brown *e*



Bright red brown *e*
Position 10R



Rood's brown *e*



Dark red brown *e*

Red browns - The most common shade in all deliveries but scarce for the 1st. The hues depend on the amount of red.

D. Deliveries and Shades

1st Delivery - July 1, 1847 to March 13, 1848

Dark Browns

Dark browns - Deep rich shades, many with red present.



Chestnut brown *e*



Seal brown *e*



Bister *e*



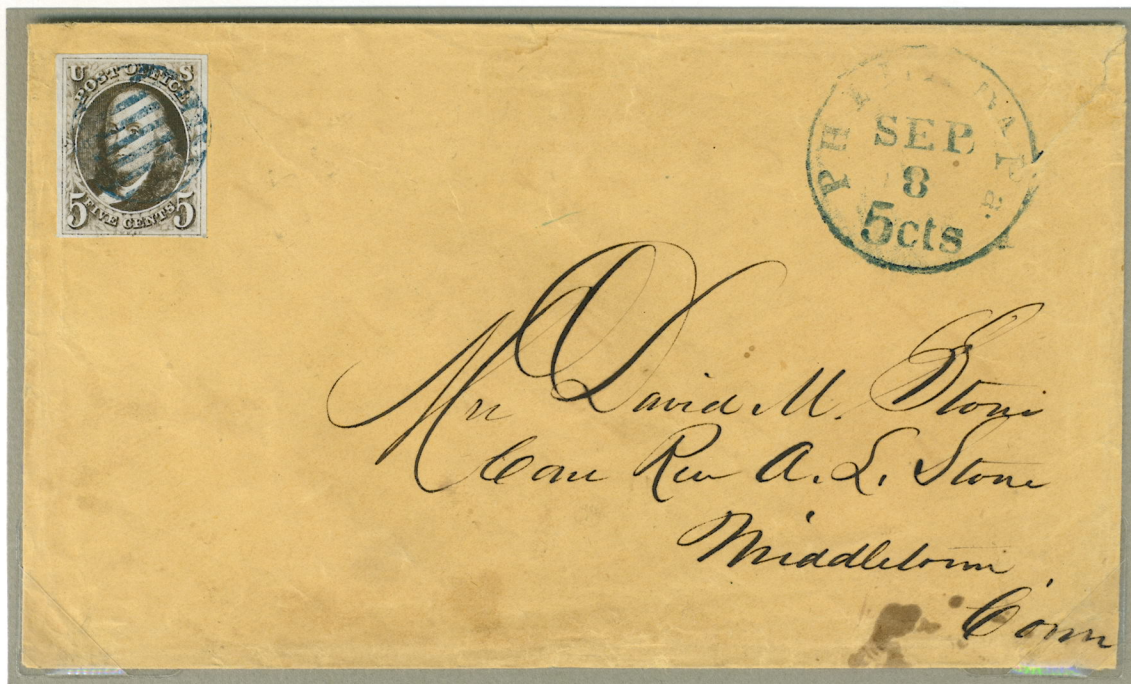
Walnut brown *e*



Dark brown *e*

MR 25, 1850 to Demopolis, AL.

*One of two recorded covers
where the Huntsville Star/5
cancels the stamp*



Chestnut brown

SE 8, 18??

to Middleton, CT. *e*

D. Deliveries and Shades

Black Browns

1st Delivery - July 1, 1847 to March 13, 1848

Black browns - Darkest of all shades due to concentrated pigments yielding heavily inked stamps.



Chocolate brown *e*



Blackish brown *e*

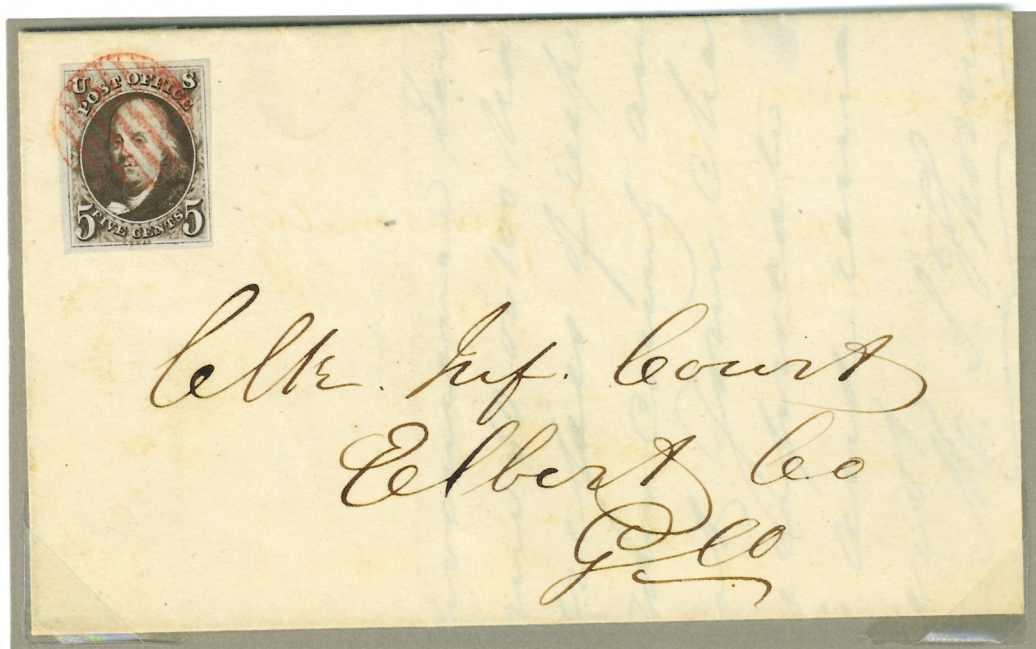


Deep olive brown *e*



Blackish brown
AU 17, 1847 to
Baltimore, MD. *e*

Fuscous black
DE 18, 1848
Origin unknown
to Elbert Co., GA. *e*



D. Deliveries and Shades

2nd Delivery - March 13, 1848 to March 19, 1849

Orange Browns - Gray Browns

Red Browns - Brown

2nd delivery impressions - Most lines are clear and delineated. Frame lines show a few weak spots, making them uneven. Shading and foliates, though distinct, are lighter than 1st delivery and the first area to wear out. Position dot is visible.

Orange browns - More brown in this delivery.

Gray browns - Same shade as 1st delivery.



Orange brown



Deep orange brown



Deep grayish brown



Grayish brown - Red tint
Bright blue paper

Red browns - Red browns from this delivery are more common than the 1st.



Dark red brown



Red brown
Hudson River Mail cancel.



Deep red brown

Brown - Similar to the 1st delivery but a much richer color than subsequent deliveries.

Only recorded 1847 cover from Niagara Falls, NY

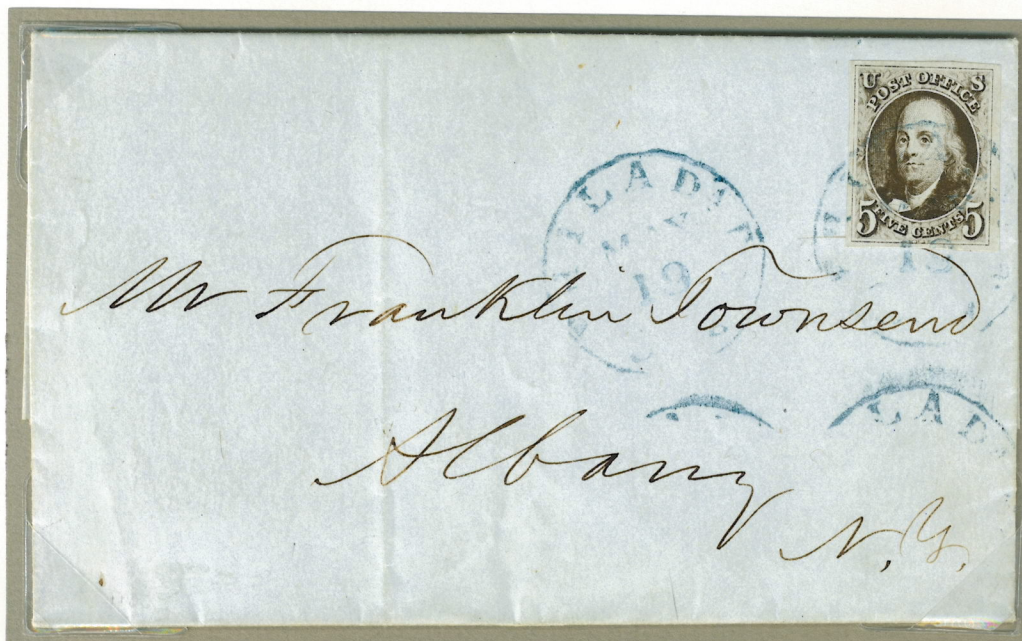


Deep brown - June 2, 1849 to Lockport, NY.

D. Deliveries and Shades

2nd Delivery - March 13, 1848 to March 19, 1849

Dark Browns



Dark brown - MY 19, 1848 to Albany, NY. e



Sepia - OC 4, 1848 to South Lee, MA. e

D. Deliveries and Shades

3rd Delivery - March 19, 1849 to February 14, 1850

Regular Impressions

Dark Brown - Gray Brown - Red Browns

3rd delivery regular impressions - Most lines are very fine with some barely discernible. Frame lines appear frequently broken with the background shading barely visible. Foliate lines are abbreviated and of no help in plating.

Brown - More red than previous.

Uncommon shade for this delivery.

Gray brown - With red hues.



Brown - Right margin. *e*

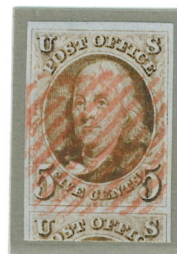


Deep gray brown *e*

Red browns - More common than first deliveries with the impression being the delivery telltale.



Pale red brown *e*



Red brown *e*



Pale red brown
Top margin. *e*

D. Deliveries and Shades

3rd Delivery - March 19, 1849 to February 14, 1850

Worn Plate and Dirty Plate Impressions

Red Browns

3rd delivery worn or dirty plate impressions - Found in the red brown shades. Same characteristics as before but with ink unevenly distributed likely caused by stale ink, low printing temperatures and a worn plate.



Worn plate - Pale red brown



Dirty plate - Dark red brown



Dirty plate - Dark red brown

Stamp used in the first week the 3^d delivery was received in Boston

AP 2, 1849 to Wrentham, MA.

D. Deliveries and Shades

4th Delivery - February 14, 1850 to December 7, 1850

Red Browns - Pale Brown
Yellow Brown - Dark Browns

4th delivery impressions - The plate was cleaned after the 3rd delivery, likely by acid etching. This caused the lines to widen and deepen giving a fuzzy appearance. Frame lines are mostly complete but not distinct. Background shading lines, foliates and position dots are visible but lighter.

Red browns - The color is cleaner than the 3rd delivery and similar to the 1st and 2nd.



Pale red brown *e*



Red brown *e*

Pale brown - Shows a cold grayish cast.

Yellow brown - Pinkish and uncommon color.



Pale brown *e*



Yellowish brown
Position 80R - Double transfer Type "A"

Dark browns - Much lighter than previous deliveries but darker than the other browns in this delivery.



Dark brown *e*



Van Dyke brown

D. Deliveries and Shades

4th Delivery - February 14, 1850 to December 7, 1850

Olive Brown- Brown Oranges

Gray Browns - Orange Browns

Olive brown - Slight green pigment and a very uncommon shade.



Olive brown *e*

Brown oranges - Richer and darker than the similar shade of the 5th delivery.



Brown orange



Deep brown orange
Left margin *e*

Gray browns - Shades are similar to previous ones with lighter impressions the norm.



Dull gray brown *e*
Demonetized usage
Small Boston "Paid" cancel.



Gray brown - Strong red tint

Orange browns - Weaker color than the orange browns from the 1st and 2nd deliveries.



Orange brown *e*



Deep orange brown
Position 91R



Dark orange brown *e*