

TITLE PAGE

COLORED CANCELS ON U.S. STAMPS OF 1869

Purpose and Scope: This exhibit presents cancels struck in colors other than black on all nine face values (1-cent to 90-cents) of the U.S. 1869 series. It shows the full range of cancel colors and designs, including fancies, and illustrates uses of color to designate specific postal services.

Background: During and before the 1869-era, large post offices mostly used free government-issued cancellers that depicted simple grids or targets. Small post offices not qualifying for free devices often fashioned their own cancellers from soft cork. Some postmasters/clerks carved artistic designs, giving rise to so-called fancy cancels. Similarly, small-town postmasters often bought or mixed their own ink, giving rise to a wide variety of colors. Most colored/fancy cancels occur on the 3-cent stamp.

Overall, about 10% of cancels on the 1869 issue are in a color other than black. For low denominations, the most frequent color is blue (7%), followed by red (2.5%). The remaining 0.5% consists of green, purple/violet, magenta, brown, ultramarine, and orange. For higher denominations, used frequently on foreign mail, colored cancels other than red are scarce, and colored fancies are bona fide rarities.

Organization: The exhibit consists of eight chapters, arranged in ascending order of color rarity. Chapter lengths vary widely, in proportion to the population of each color. Within each chapter, cancels are organized by design. Colored headers on each page guide the viewer through the exhibit.

Chapter 1: **Blue Cancels** (Fr I-III)
Chapter 2: **Red Cancels** (Fr III-V)
Chapter 3: **Green Cancels** (Fr V)
Chapter 4: **Purple/Violet Cancels** (Fr VI)

Chapter 5: **Magenta Cancels** (Fr VI)
Chapter 6: **Brown Cancels** (Fr VI)
Chapter 7: **Ultramarine Cancels** (Fr VI)
Chapter 8: **Orange Cancels** (Fr VI)

Chapter 1 contains sections on the blue cancels of Savannah and Philadelphia; Chapter 2 has an extensive section on red Baltimore foreign mail cancels; Chapter 3 has a section on the signature green cancels of Owego NY.

Inclusion criteria:

- a) Stamps with colored *and* black cancels are included if the colored cancel could not be found otherwise.
- b) Cancels take priority over centering or condition. The few reperfed stamps are so-marked.
- c) Distinctive cancels that appear on two or more face values are shown for each value.
- d) Non-distinctive blue cancels on the 3-cent stamp are common and, therefore, are **not** included.

Personal research: Population estimates are from an extensive census of 1869 stamps and covers.*

The material: By far the most complete assemblage of 1869 colored cancels ever shown, the only notable absences being the green cancel on the 10-cent value and yellow cancel which, though listed by Scott, probably does not exist on an 1869 stamp. Provenances include the collections of Hind, Juhring, Knapp, Ishikawa, Gibson, Haas, and Grunin.

Items of noteworthy rarity or boldness-of-strike are matted in **red**. The letter "e" by an item indicates expertization by a recognized authority. Re-issues are so-labeled.

*Field, Ed; and Steve Rose; "Colored Cancels on 1869 Stamps", *The Chronicle of the U.S. Classic Postal Issues*, Whole No. 242 Volume 66, No.2, pp 151-164, May 2014

Blue cancels outnumber all other colors combined on low-value 1869 stamps, but they are scarce-to-rare on stamps with values higher than six cents.

CRAYON CANCELS

Blue crayon usually indicates registry, but the cancels shown below on the 24 and 90 cent values appear to de-face stamps that escaped cancelling on packages.

15-CENT INVERT

Four-Bar Crayon Cancel



One of two known blue marks on this Invert
(with black cork) e

SIMPLE CORK CANCELS

Greenish Blue



e



1880 reissue e



e



e



e



e



e



BLUE CANCELS

TARGETS

Four-ring target cancels are common on low-denomination 1869 stamps, but they are scarce-to-rare on high-denomination stamps

Target & Grid



TARGET CANCELS WITH OTHER THAN FOUR RINGS



Five-Ring Target: Riverton CT



BLUE CANCELS

TARGETS: FOUR-RING

Cincinnati OH

This common cancel comes in two distinct hues: Standard Blue and a Greenish Blue that can be mistaken for true green.

Standard Blue Ink (to Ireland)



Greenish Blue Ink



Camanche CAL (to France)



Closed Circular

5-Bar



e

7-Bar



7-Bar



6-Bar



7-Bar



Open Circular

5-Bar



6-Bar



8-Bar



7-Bar



e

7-Bar



Various Designs

Broad 4-Bar



1875 re-issue e

Waffle



e

Waffle



1875 re-issue e

Waffle



e

4-Bar



Geometric



Geometric



e

5-Bar



e

Split



e

Split



3-Bar



4-Bar



Broad 3-Bar



e

5-Bar



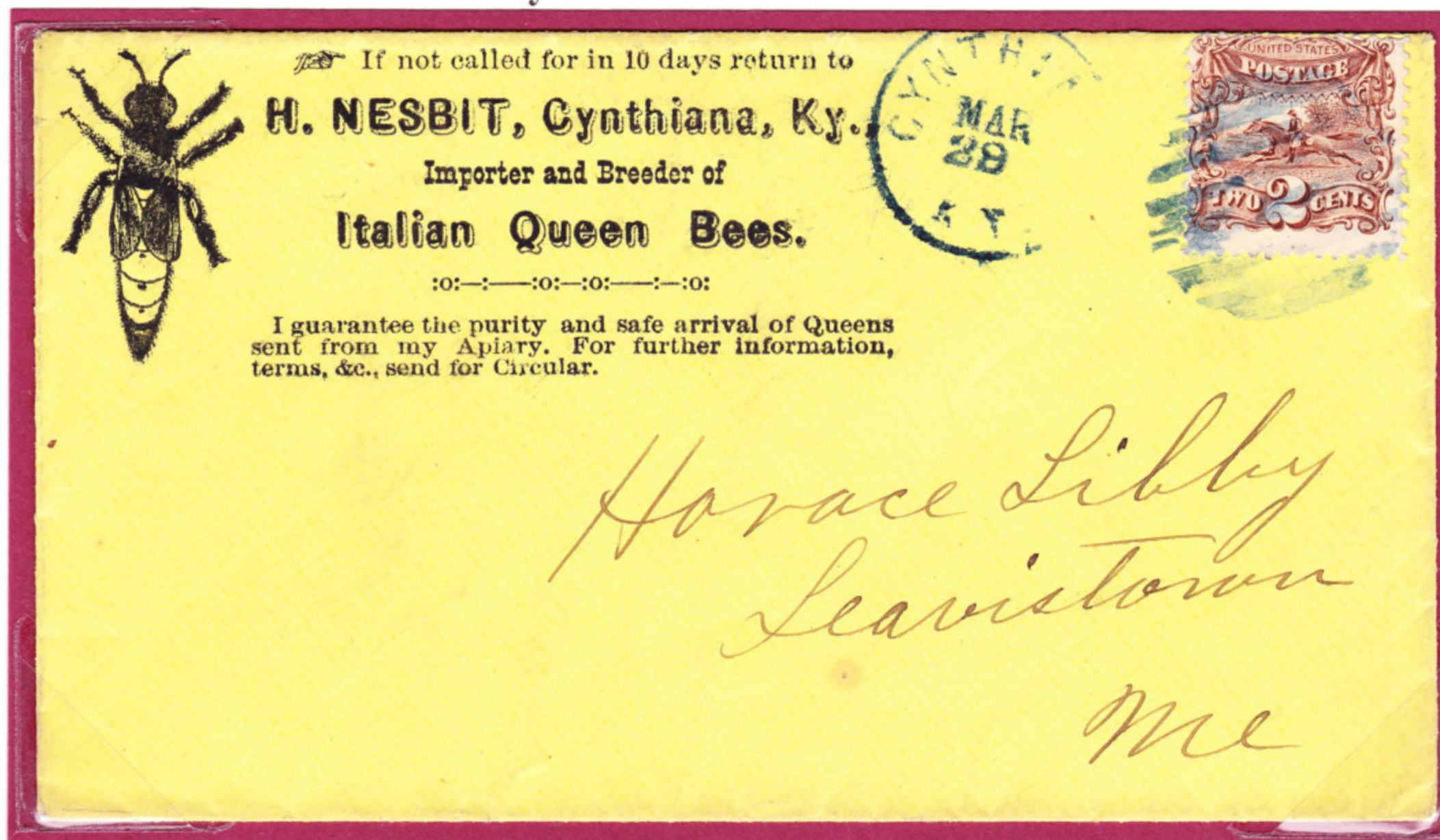
e

Waffle



Ex Hind, Haas

Cynthiana KY: Nine Bar



Only known example

Galesburg IL: Five Bar



BLUE CANCELS

PICTORIALS: BIRDS, BEES & HEADS

Bluebird: Rockford IL



e



e



e

Bee
NYC Station B



e

Bee



e

Mt Vernon OH



e

Skull & Bones: Charlestown W VA.



e

Bust of woman's head: Suisun City CA



Only known Example

e



BLUE CANCELS

PICTORIALS; LEAVES & CLOVERS

Danville KY



e



Covington KY



Only known example

Galva IL



e

BEER MUG: GALVA IL



The boldest strike of the four examples known on cover

In 1984 an illegible "V" on another example caused this cancel to be mis-certified as being from *Galena* rather than *Galva*. The above cover removes all doubt as to the origin of the Blue Beer Mug.

BLUE CANCELS

RADIAL DESIGNS

UNKOWN ORIGINS



ex Coulter



e



ex Juhring

e



ex Grunin

e



e



e



e

Newark OH



Negative 8-arm Rosette: Cannelton IN



Missent to **Frankfort KY**, then forwarded to **Frankfort Germany**
Only known on-cover example e

7-Arm Cogwheel: Grass Valley CA



Unique mixed-issue registered cover

HOLLOW STARS

4-point



4-point



6-point



e

FIVE-POINT STARS

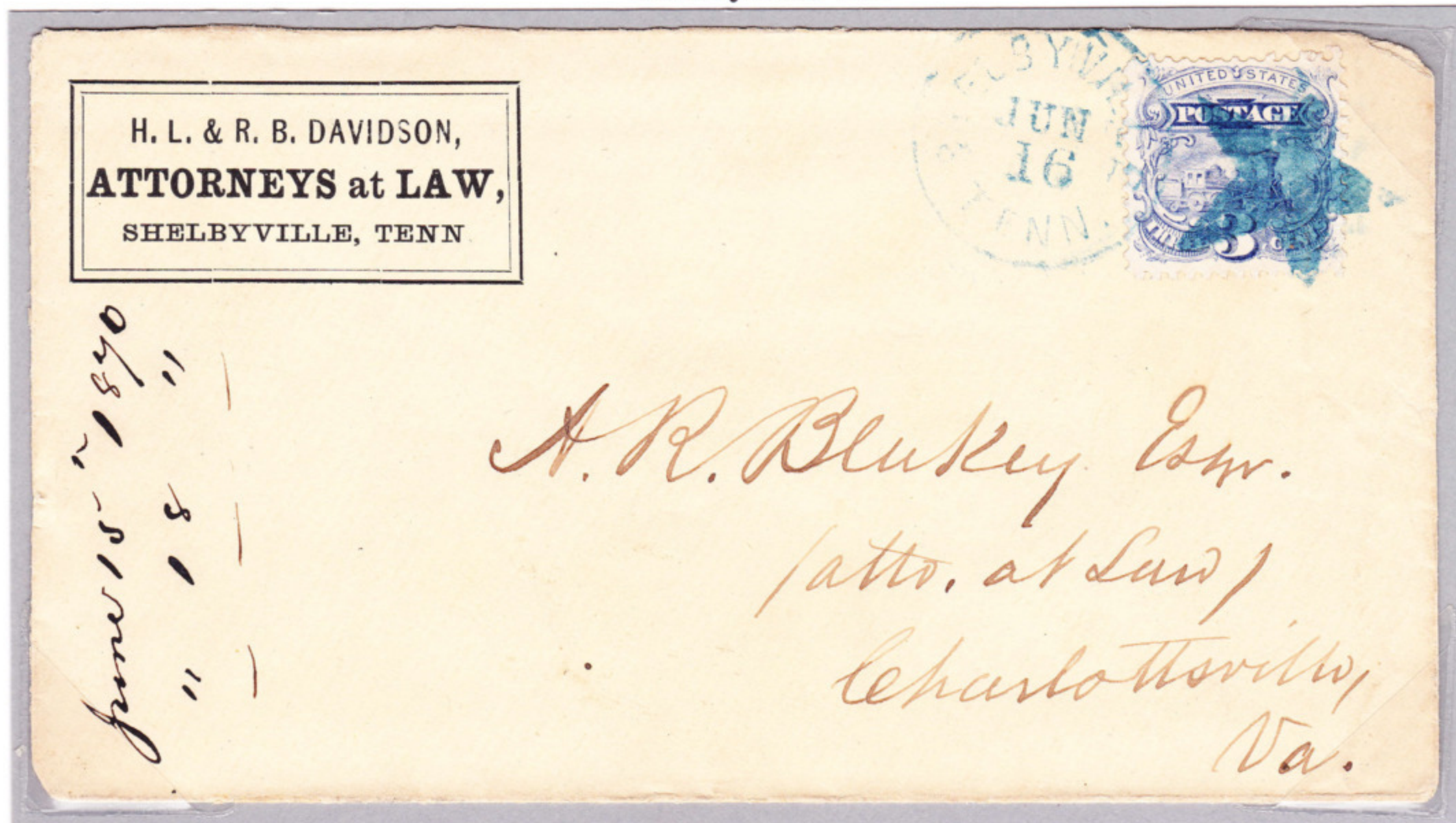


e

Freeport IL



Shelbyville TE



BLUE CANCELS

NEGATIVE STARS

FIVE-POINT STARS

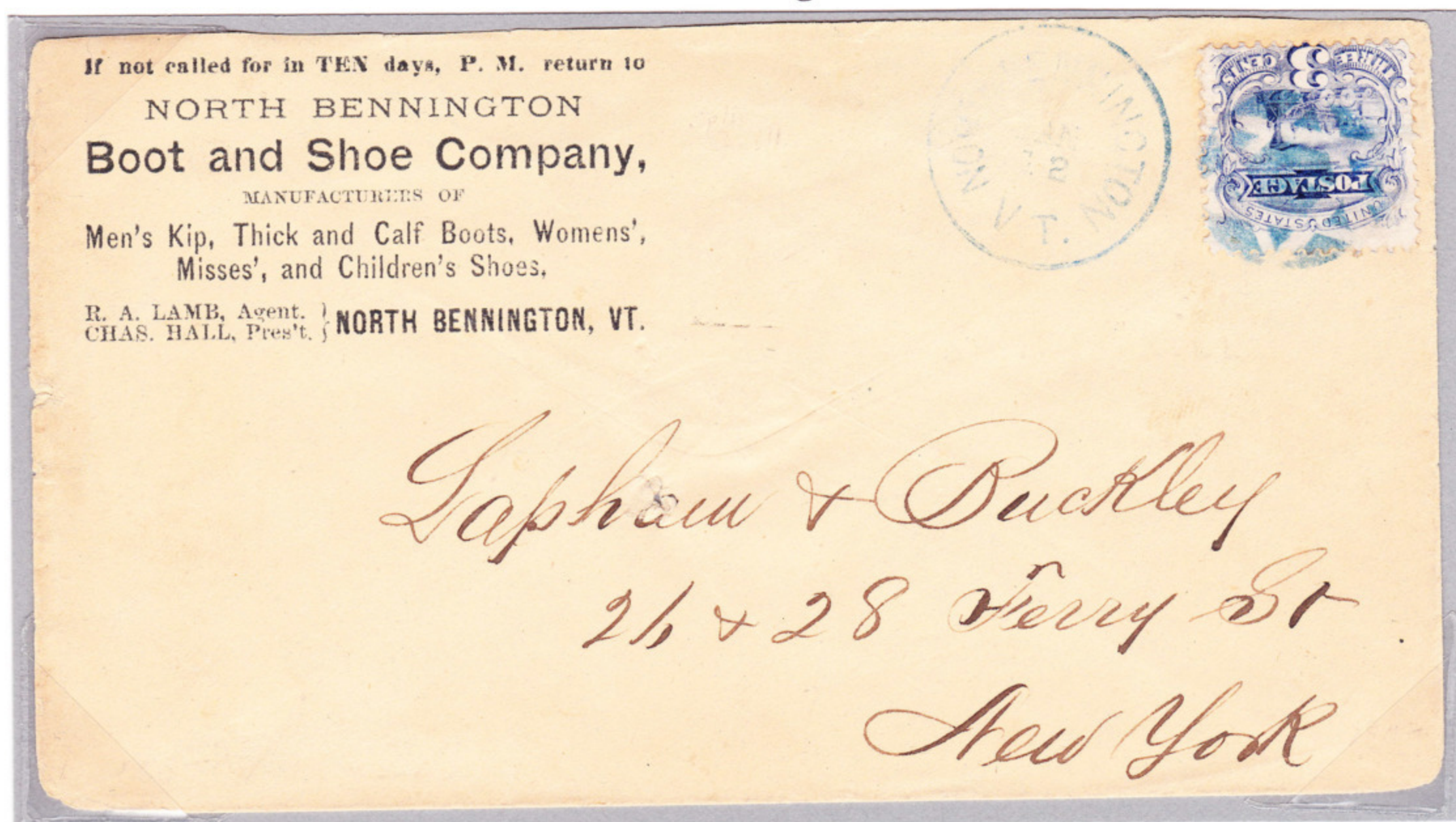


Re-issue e

SIX-POINT STARS



North Bennington VT



EIGHT-POINT STAR: Lisbon NH



BLUE CANCELS

CROSSES

CROSSES IN CIRCLES



MALTESE CROSSES



ex Grunin e

6-sided



re-issue



Terre Haute IN



ex Gibson

Whites Corners NY



Unknown Origins

