

Mail to Netherlands East Indies

Island of Celebes



42¢ rate, effective Jan.1, 1868 through Dec.31, 1870, Holmes Hole, Mass. Nov.20(c.1868), red London 'Paid' and '32' numeral credit markings. Black '28' debit marking. Backstamps: New York 'Paid All' Transit Nov.21 and Singapore Dec.2 receiving mark. An extremely rare foreign rate and destination combination.



Mail to Norway



46¢ rate via French Mail, Morris, Illinois July 7, 1862 to Bergen, Norway. A rare destination.



Mail to Palestine

Jerusalem



33¢ rate, Faribault, Minn., Sep. 20 (1866)  
by British mail via Southampton, England  
to Jerusalem, Syria-Palestine. Red 'Paid'  
London 9 Oct. '66 transit mark and black  
10 Oct. '66 Calais Foreign Exchange mark.  
Marseille and Alexandria, Egypt backstamps.

This is a disinfected cover to Palestine.  
The fumigation slit cuts through the 30¢  
stamp and the envelope. Signed Ashbrook.



Mail to The Philippines



84¢, double the 42¢ rate payment via Marseilles, red Boston, Oct.9('68) Paid cancel, blue Storer forwarder, red London Paid Oct.20,'68 transit, sailing from Boston on the Inman Liner "City of Paris" Oct.10 to Manila, Philippines. Hong Kong transit and Manila 9Dec.'68 receiver backstamps.

This cover constitutes the first example of a Double Rate letter to Manila and is the Highest Franked complete cover.



Mail to Portugal



45¢ rate, Detroit American Pkt. Paid 24 Apr. 23,  
(1866) red credit datestamp. Red London transit,  
'80'reis handstamp showing credit to Portugal.  
A rare Detroit exchange office usage.



Mail to Russia



30¢ single rate. Josiah Pierce correspondence to Petersburg, Russia from Boston, Mass. Dec. 21, 1866 by French Mail. Red Jan. 5 '67 French Entry octagonal datestamp. Blue "Aus Frankreich Per Aachen Franco" 1-7 datestamp, and red 'Franko' straightline handstamp.



35¢ rate by Prussian Closed Mail to St. Petersburg, Russia from New York, May 30, (1866). Red manuscript '14' credit and blue framed "Aachen" transit mark.



Mail to Scandinavia

Denmark



New Orleans, Louisiana, April 4, 1865 date-stamp to Copenhagen, Denmark. The 30¢ stamp is a 10¢ overpayment of the Hamburg Mail 20¢ rate applied to this cover.

Sweden



39¢, paying the 34¢ rate by Prussian Closed Mail, plus 5¢ fee prepaid, REGISTERED MAIL to Sweden. Blue "Cincinnati, Ohio Jan. 24 (1868)" and red "New York British transit" datestamp. Manuscript '12' credit marking. Backstamped 2-1-68.



Mail to Seychelles Islands

Mahe Island



30¢ single rate from New Bedford, Mass., Jan. 18 (1869) through New York on Jan. 20 by French Mail to Mahe, the largest of the Seychelles Islands, via the port of Calais, France.

The Seychelles are a group of Islands in the Indian Ocean, off the coast of Africa, North of Madagascar. The Islands were attached to the British colony of Mauritius during this period.



Mail to Siam

Now Thailand



54¢ rate. New Haven, Ct. Nov.12(1867) by  
British Pkt. via Southampton, England.  
Red London PAID Nov.23'67 receiving mark.  
Red '48' credit handstamp. Stamps cancel-  
led by black fancy Negative Star cancels.  
A black bordered Mourning cover.

Very few recorded uses to this destination  
with or without the 30¢ denomination.



Mail to Singapore, East Indies



30¢ rate by French mail. "Boston Br. Pkt. PAID 27, 25 Oct.(1865)" datestamp, and red boxed P.D. credit mark handstamp. Black 5 Nov.'65 French Exchange Office handstamp.



57¢ rate for mail over ½oz. but not over ¾oz., Sheffield, Mass. Jun.14(1864), British mail via Marseille. Red "New York Br. Pkt. PAID Jun.15", red "London PAID Ju27'64" transit mark, and red manuscript and magenta crayon '48' and '1' credit markings. Singapore backstamp.



Mail to South America

Argentina



45¢ rate, British mail via England. Fancy black "Negative Shield in Cog-wheel" cancel from Brooklyn, N.Y., Nov. 20, 1863, to Buenos Aires. Magenta manuscript '24' credit to England. Red London transit marking, and American Pkt. Nov. 21 backstamp.

Ex. Rohloff

Brazil



45¢ rate, Oberlin, Ohio, Sep. 14 (1863) to the Hon. James Monroe, U.S. Consul, Rio Janeiro, Empire of Brazil, by British mail via Southampton, England. Manuscript '24' U.S. credit mark. London 'Paid' Sep. 30, '63 transit mark.



Mail to South America

Chile



34¢ rate, Rochester, Mass. Nov. 16 (1866) by Am. Pkt., then Br. Pkt. via Panama. Black transit "PANAMA NO 29 '66", magenta '24' and '25' marks showing credit (though the 24 is not crossed out.) A scarce destination.

Guatemala



68¢ (2x34¢) rate by Am. Pkt. from Boston, Mass. to the U.S. Minister in Guatemala, South America. The letter was paid via Panama, yet a '6' reales due mark in black ink (approx. 10¢) shows an underpayment to be collected.



Mail to Spain

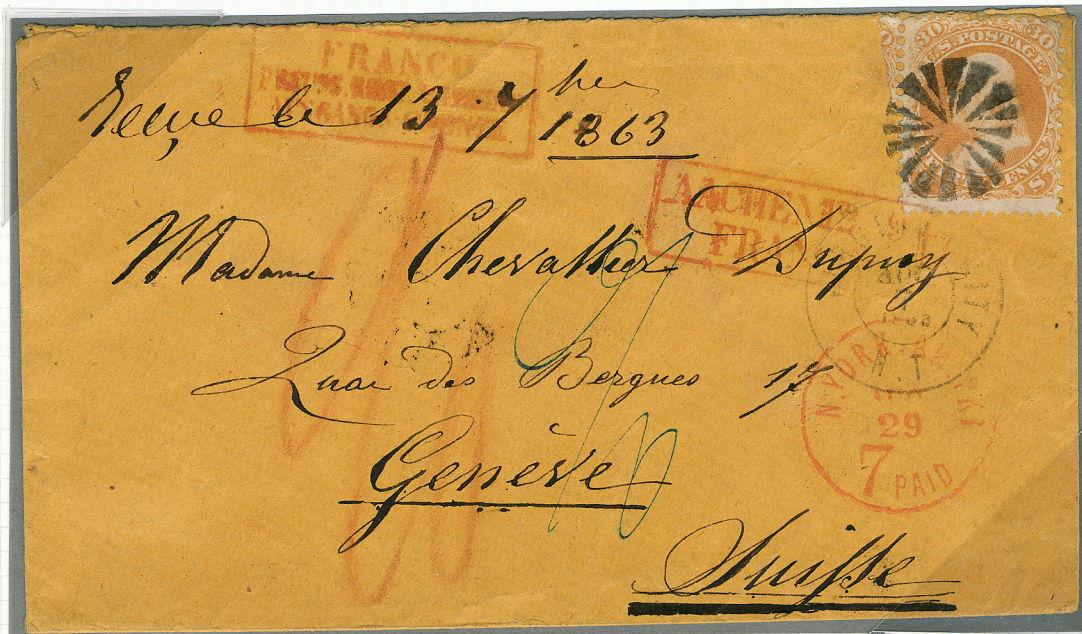


42¢(2x21¢) rate, San Francisco, Cal. Nov.2, 1863  
datestamp and cogwheel cancels to Barcelona, Spain.  
Red New York PAID credit and French transit hand-  
stamps.



Mail to Switzerland

Nevada Territorial Usage

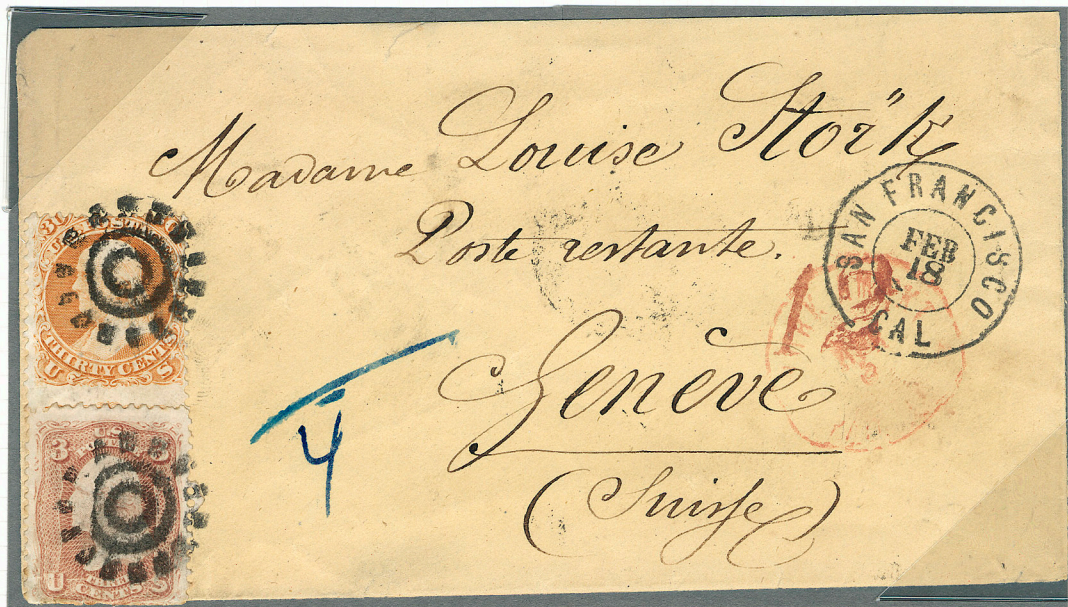


Two covers showing use from Virginia City, N.T. (Nevada Territory) to Geneva, Switzerland in 1863 and 1865. In 1865 Nevada had received statehood status. Thus, the second cover shows a late use of the Nevada Territory postmark. Single and double rates.





Mail to Switzerland



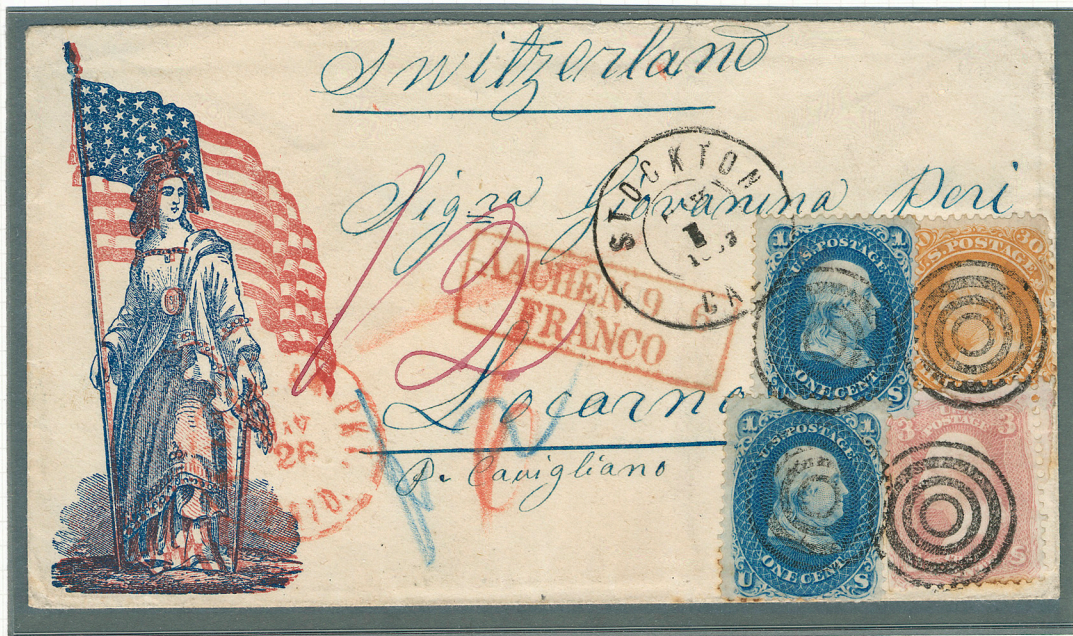
33¢ rate. San Francisco to New York. American Packet via Frankfurt, arriving April 24, 1867 in Geneva. The Bremen-Hamburg mail rate had changed from 33¢ to 21¢ in February 1867. This letter was charged the old rate.



35¢ rate. "Albany, N.Y. May 28" circular datestamp by British Pkt. arriving at London on June 12 (1862). Then arriving at Calais on June 13. No backstamps. A very scarce use of the 5¢ Buff shade.



Mail to Switzerland



35¢ rate, Stockton, California, May 1, 1863 circular datestamp, N.Y. Am.Pkt. May 26 red datestamp, on a multicolor Patriotic envelope to Locarno, Switzerland. A rare and beautiful California usage.



35¢ rate, San Francisco, California to Locarno, Switzerland, October 8, 1863. Red N.Y. Am. Pkt. PAID Oct. 21 backstamp/transit marking. LOCARNO 15 Nov 63 backstamp. A rare West Coast to Switzerland usage.