

# *Columbian Exposition Issue 1893*

The collection presented herein comprises 35 years of collecting primarily with the help of a great stamp consultant Andrew Levitt. This was truly a wonderful experience, and a great opportunity for an avid stamp collector. The collection was exhibited in 1996 at Anphilex in New York City at the Biltmore hotel, as 'anonymous' through Andrew Levitt. Both pieces shown below are part of this collection. Over the years the Columbian Stamp Co. has owned and offered for sale or represented buyers of many of these items. It is fitting that Harry Hagendorf of Columbian Stamp Co. represent these items.

-Anonymous, Feb. 2009



**Figure 1** shows the largest recorded Columbian stamps, \$49.34 on a piece of registered package wrapper, mailed from Bangor, Maine, on February 19, 1897. Among the 25 Columbian series stamps are a strip of three of the \$5.00 stamp at the bottom and a single \$5.00 stamp at the top.



Fig.1 Largest recorded used multiple on package wrapper.

The PF certified the largest reported multiple, a block of 14 without gum, on October 24, 1991. (PF Certificate #250,000). See **Figure 2**.



Fig.2 Largest recorded \$5.00 stamp multiple.

See: [http://www.philatelicfoundation.org/research\\_articles/columbian.htm](http://www.philatelicfoundation.org/research_articles/columbian.htm)

## United States of America

### The Columbian Exposition Issue of 1893

In the annals of postal history, the Columbian Issue stands out as a monument in this country's 150-year history of postage stamps. From the controversy surrounding their issue in 1893 (centered mostly on the then high-dollar face value of the set) and their inherent exquisite design as America's first commemorative issue...to their legend as being perhaps the most highly sought after set of stamps in American philately, the "Columbians" offer beauty, specialization and rarity.

Less than two decades after their city virtually burned to the ground in the Great Chicago Fire of 1875, the citizens of the Midwest's teeming metropolis set out

to not only rebuild, but prove to the world that Chicago was a milestone in commercial and industrial progress. Thus, the World Columbian Exposition was staged on the shores of Lake Michigan—honoring not only the 400th anniversary of Christopher Columbus' discovery of America, but America, itself...and its preeminence in human development.

No human endeavor—during or after that Exposition—serves to better commemorate that event than this great set of stamps.

This exhibit represents selected pages from the most comprehensive collection ever formed of this issue.



Columbian stamps used on January 1, 1893, a Sunday, the first official day of use for this issue, represent great rarities since only the main post offices in New York City and Boston were open for stamp sales. 1-Cent Jan. 1 FDC from "Burger Correspondence."

With the first day falling on a Sunday, the next day, Monday, January 2, 1893, is also recognized as a first day for this issue—especially at the Exposition, itself. Two 1-cent issues pay domestic letter rate on this FDC from Chatham, Mass. on Jan. 2.



Fig.1 one Cent First Day Covers, Jan 1, and Jan 2, 1893

# Pre-First Day Usages

Usage prior to January 1, 1893, is very rare.



The one-cent issue cancelled on December 31, 1892.



The two-cent issue cancelled on December 31, 1892.

# First Day Covers



Two-cent first day cover from "Burger Correspondence" postmarked Jan. 1, 1893. Backstamped the same day.



First day cover of the 2-cent value postmarked Lowell, Mass., on Monday, January 2, 1893. Received next day in Boston.



# First Day Covers



Three-cent issue (from the "Burger Correspondence") postmarked Jan. 1, 1893, from New York. Backstamped same day.



Four-cent issue (from the "Burger Correspondence") postmarked Jan. 1, 1893, from New York. Backstamped same day.

## First Day Covers



First day cover of the 5-cent value postmarked New York on January 1, 1893. Backstamped same day.



First day cover of the 10-cent value postmarked New York on January 1, 1893. Backstamped same day.

## The Ten-Cent Issue

### Pre-First Day Usage -

Pre first day cover from  
Arlington, Mass. on December  
31, 1892. Backstamped East  
Lexington, Mass., on the same  
day. On 4-cent entire—  
franking enough for seven  
times 2-cent letter rate.





## World's Fair Machine Cancellations of the Full Set

Unique matched set of cacheted covers with each stamp in set (from the one-cent to the \$5.00 values) tied by World's Fair Station machine cancellation in June, 1893. Produced by Charles Gunther, Chicago confectioner, and showing only authentic portrait of Columbus.



Fig. 7 Dr. Robert Locke covers from the Exposition, incomplete set (2cent missing), found in the Virgil Brand safety deposit box at his death, sold in 1986. ( Steve Ivy auction). Page 7A  
( 4 Pages.)



# World's Fair Machine Cancellations of the Full Set



Fig.7B 5 Cent through 10 Cent covers.



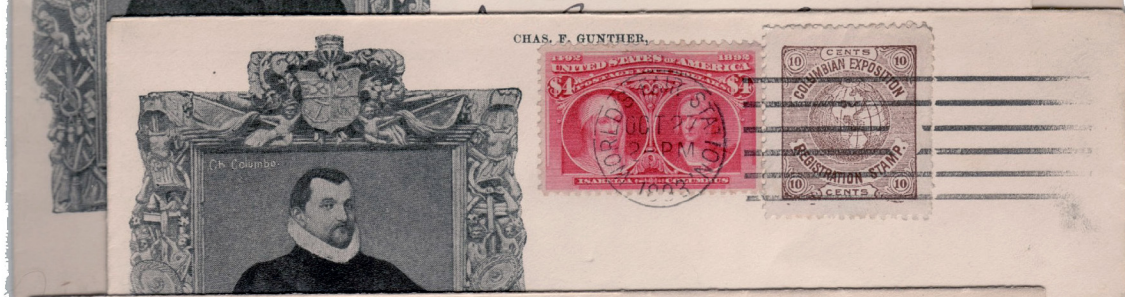
# World's Fair Machine Cancellations of the Full Set



Fig.7C 15Cent to \$1.00 exposition usage.



# World's Fair Machine Cancellations of the Full Set





The One-Cent Issue  
"Columbus In Sight of Land"



Unused bottom left sheet margin copy showing  
unlisted perforation error.



Bottom plate number imprint strip of four with platemaker's control letters.



Usage From U.S. Postal Agency • Shanghai, China

One and 2-cent Columbian issues with 2-cent Trans-mississippi issue from Wuchow, China, to Germany in March, 1900. The U.S. stamps comprise the 5-cent UPU rate to foreign destinations. Absence of Chinese postage paying internal rate from Wuchow to Shanghai indicates probably prepayment in cash.



## The One-Cent Issue



### Underpaid Mail To Yokohama, Japan

One-cent issue with pair of two-cent stamps on double weight letter to Japan. Postage due paid with 10 sen Japanese due stamp at destination. From San Francisco, Jan., 1894.



### Insufficiently Paid To The Netherlands

Double weight letter paid at single weight rate. Postage due at double insufficient amount, or 50 centimes...paid with Dutch due stamp.

# The One-Cent Issue Usages To Cuba and Jamaica



## To Cuba

Registered and special delivery mail to Cuba following Spanish-American War in March, 1900. From Winchester, Mass., through New York to Havana. Five cents UPU letter rate, eight cents registry, plus 10 cents for special delivery.



## To Jamaica

One, 2, 5 and 6-cent Columbian issues combine to pay five cent UPU letter rate and 10 cents registry to Old Harbor, Jamaica, in May, 1895.



## The One-Cent Issue



### Paris Exposition Cancellation

The United States exhibit at the Paris, France, Exposition of 1899-1900 included a model post office station, and letters with U.S. stamps were postmarked there. One-cent Columbian covers postage for local delivery of letter in Paris.



### Special Delivery Usage

One-cent issue combines with one-cent stamped envelope on domestic letter rate special delivery cover from Bridgeport, Conn., to New York City in June, 1893.

# The One-Cent Issue



Fig. 12A U.S. Postal Agency Siberia Feb 23, 1923.



Fig. 12B U.P.U. Rate to Russia, Feb. 1893.