

COLOR CANCELLATIONS ON THE FIRST 78 YEARS,
1847-1925 OF U.S. STAMPS

CLYDE JENNINGS

AS RECEIVED BY
THE EXHIBITION PHOTOCOPY COMMITTEE
OF THE
U.S. PHILATELIC CLASSICS SOCIETY, INC.
7 DECEMBER 1989

COLOR CANCELLATIONS on the FIRST 78 YEARS,
1847-1925, of U.S. STAMPS

Whatever U.S. Postal Regulations have specified, or did not specify, regarding colors of cancellations over the years, it is fact that black ink has been by far the preponderant color ink employed by postal clerks in cancelling operations - - as witness comparable catalog values where included.

This exhibit is an effort to show a complete collection of the first 78 years of regularly issued normal postage stamps of the U.S., no coils or booklets, but including some of the major shades and listed varieties so far known to have been legitimately cancelled by ink other than black.

In addition Air Post, Special Delivery, Postage Due, Officials, Parcel Post, Postal Savings, Parcel Post Postage Due, some of the issues under U.S. administration, plus a number of freaks, errors, and unusual items are included.

Efforts have been made to include multiples, and also a representation of the so-called "fancy" cancels, as well as regular or routine cancels, plus foreign, revenue, railroad, and unusual examples.

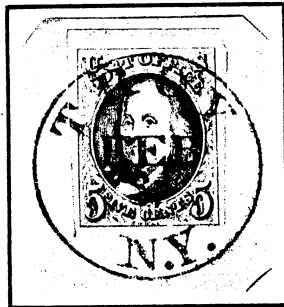
The known cancellations listed in Scott's are red, magenta, blue, orange, ultramarine, violet, green, brown, purple, olive and yellow which is the scarcest of all. Included herein is at least one example of each of these color cancels.

Printed by Rawdon, Wright, Hatch & Edson

1847

Imperforate

First Regular Issue

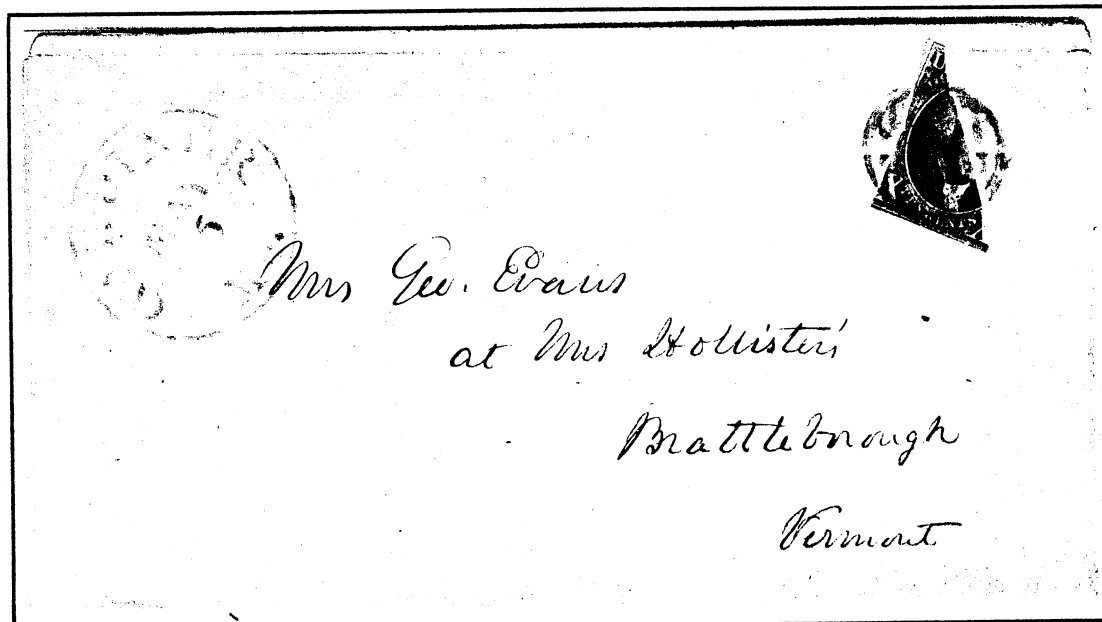


BLUE



BLUE / RED

Bisect

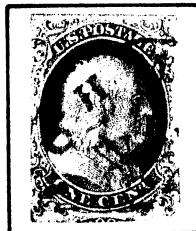


RED Bisects were never officially authorized by Postal Regulations. Rather, they were merely tolerated.

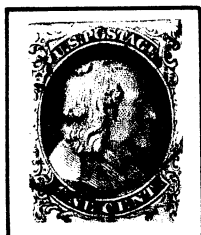
Printed by Toppan, Carpenter, Casilear & Co.

1851-56

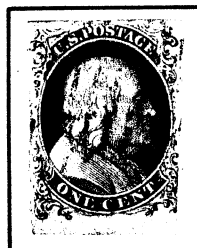
Imperforate



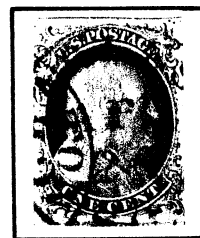
BLUE p7c
Type I EX-CASPARY
(7 R I E)



BLUE
Type Ia



BLUE p7c
Type Ic
(Curl in "C")



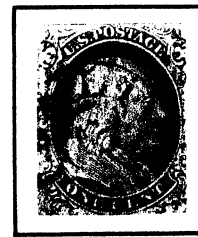
BLUE p7c
Type Ib



BLUE p7c
Type III



BLUE
Type II



BLUE
Type IIIa



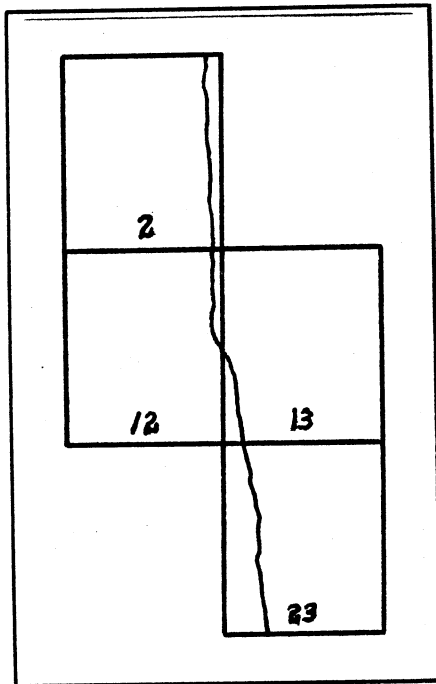
BLUE
Type IV

Printed by Toppan, Carpenter, Casilear & Co.

1851-56

Imperforate

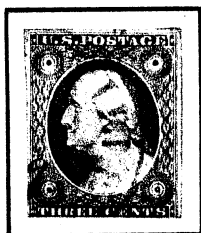
Plate Flaw



ALL FOUR RED

When impressions were being transferred onto Plate 2 there was a metal flaw in the left pane area which affected positions 2, 12, 13, and 23, as shown. Continued use of the plate increased the magnitude of the flaw, so that toward the end of the life of the plate approximately 3 mm of the flaw extended into position 33, but examples are seldom seen.

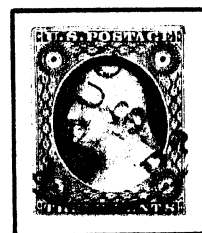
Printed by Toppan, Carpenter, Casilear & Co.
1851 - 56, Imperforate



YELLOW P7C
Rose Red



YELLOW P7C
Dull Red



GREEN
Bright Rose Red



GREEN
Orange Brown



BLUE
Copper Brown



BLUE
Claret



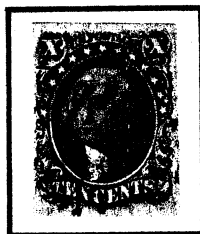
BROWN
Deep Brownish
Carmine



RED



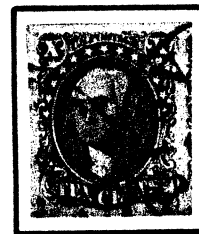
RED
Type I



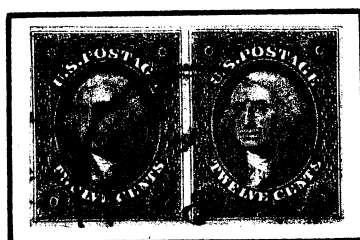
RED
Type II



BLUE P7C
Type III



BLUE
Type IV

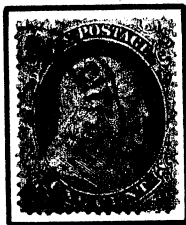


RED/BLUE

Printed by Toppan, Carpenter & Co.

1857-60

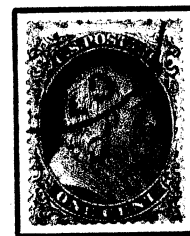
Perforated 15



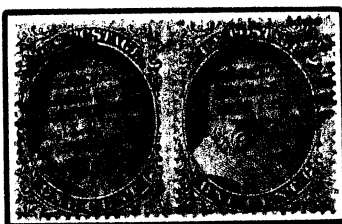
RED
Type I



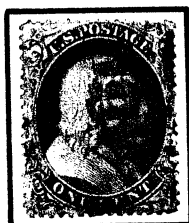
GREEN
Type Ia P7C



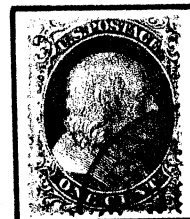
BLUE
Type Ic
(curl in "C")



BLUE
Type II



RED
Type III
SPA CERT.



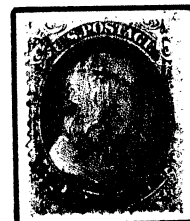
RED
Type IIIa



BLUE
Type IV



RED
Type V



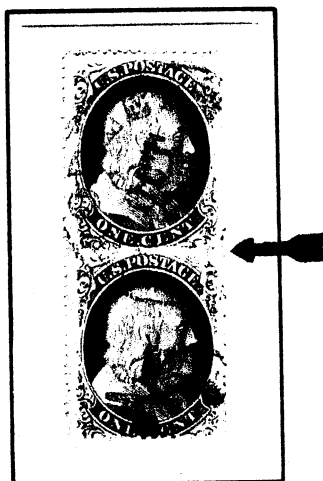
RED
Type Va

Printed by Toppan, Carpenter & Co.

1857-60

Perforated 15

Vertical pair, imperforate between



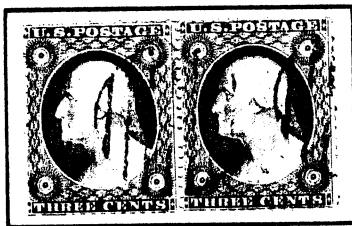
"3" IS RED P7C
Type Va

The pane of 100 stamps which produced this pair either had one row of horizontal perforations completely missing, or some of the punches which make the holes were broken on one perforating roller to the extent of the width of at least one vertical pair of stamps. This piece believed to be unique.

Printed by Toppan, Carpenter & Co.

1857-60

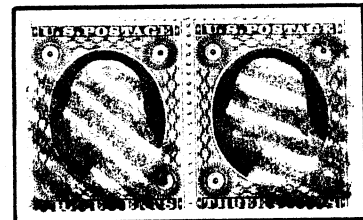
Perforated 15



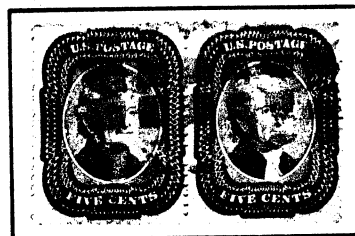
BLUE
Type I



BLUE
Type IIa



GREEN
Type II



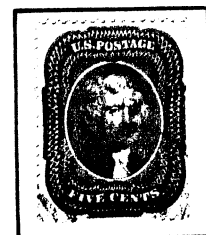
BLUE
Type I
Brown P7C



BLUE
Type I
Brick Red



RED/BLUE P7C
Type I
Indian Red



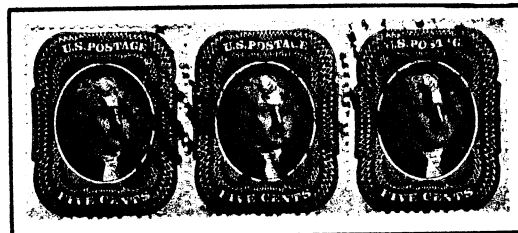
BLUE P7C
Type I
Red Brown



RED
Type II
Orange Brown



BLUE
Type II
Dark Brown



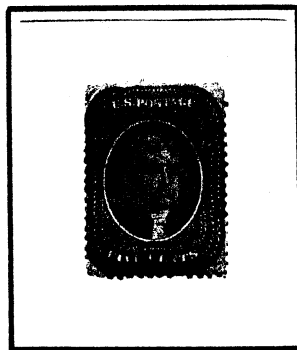
RED
Type II
Brown

Printed by Toppan, Carpenter & Co.

1860

Perforated 15

Printed on Both Sides



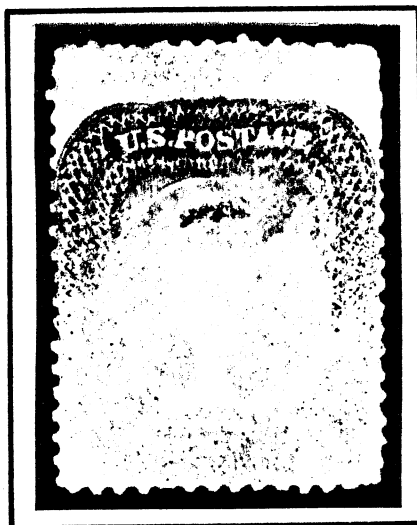
RED

Type II

97c

Brown

Occasionally a sheet of stamp paper will be passed through the flat plate printing process a second time either completely or, as is most frequently the case, only partially. This creates the seldom seen "printed on both sides" variety when the paper is in an upside down position for the second pass. It is believed that, to date, only four or five of these have been reported to exist on this stamp.

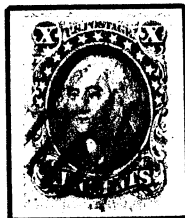


Reverse of above

Printed by Toppan, Carpenter & Co.

1857-60

Perforated 15



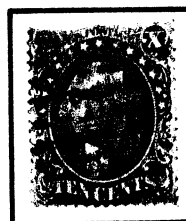
RED Type I



RED Type II P7C



RED Type III



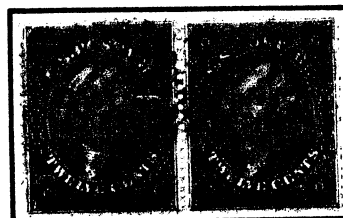
RED Type IV



BLUE Type V



RED Plate I



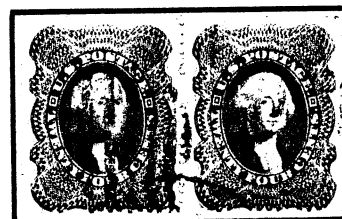
RED Plate III



RED Gray Lilac
SPA CERT



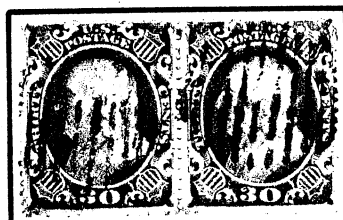
RED Red Lilac P7C
(only reported copy)



RED Gray P7C



RED Reddish Orange



RED Yellow Orange



RED Blue P7C

Printed by the National Bank Note Co.

1861

Perforated 12



RED Dark Green P7C

First, or
"August", Issue



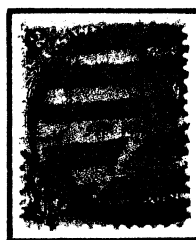
RED/BLUE Violet P7C

Second Issue

1861 - 66



BLUE



BLUE EX-RORKE



RED Pink P7C



BLUE Rose Pink



YELLOW Rose



BLUE

Pigeon Blood Pink

P7C

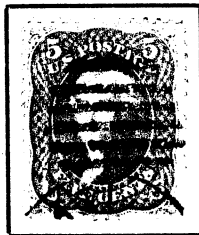
Printed by the National Bank Note Co.

Second Issue

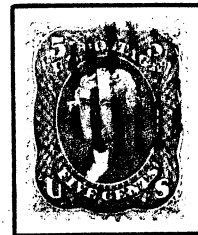
1861 - 66



Brown Yellow
RED

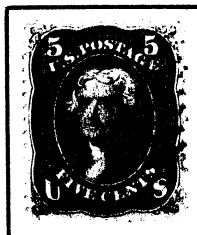


BLUE Buff



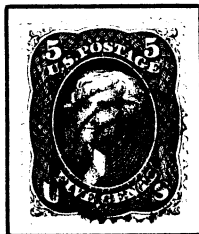
Olive Yellow
RED

Unlisted Shade: Brownish Red



RED

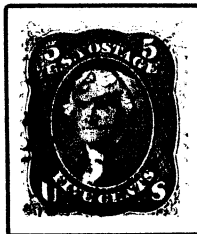
"Too brown for #75, too red for #76 - S.B.A."
(Stanley B. Ashbrook)



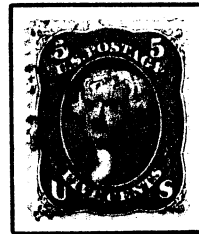
BLUE Brown



Pale Brown
GREEN



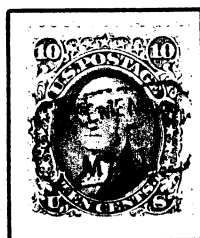
RED Dark
Red Brown



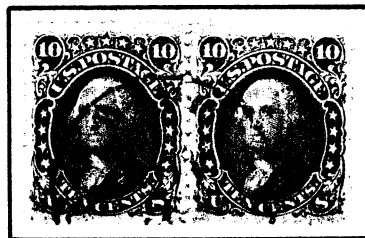
Red Brown
RED



Black Brown
MAGENTA



Yellow Green
BLUE



RED Dark Green



~~RED~~ Black ORANGE



BLUE Full Black

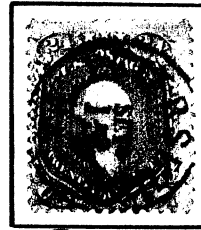
Printed by the National Bank Note Co.

Second Issue

1861 - 66



^{BLUE}
Grayish Lilac ^{P7C}
(Thin transparent paper)



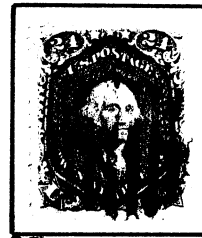
^{BLUE}
Grayish Lilac
(Thickish wove paper)



^{RED}
Gray



^{BLUE} ^{P7C}
Blackish Violet



^{RED} ^{P7C}
Steel Blue



^{P7C}
Brown Lilac
^{RED}



Dark Lilac
^{RED}



Lilac
^{RED}



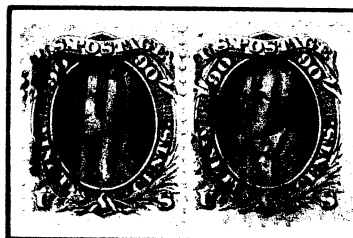
^{P7C}
Red Lilac
^{PURPLE}



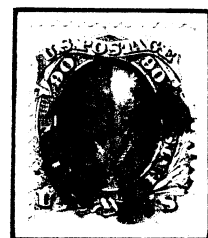
^{RED}



Dark Blue
^{RED}



Blue
^{RED}



Pale Blue
^{RED}

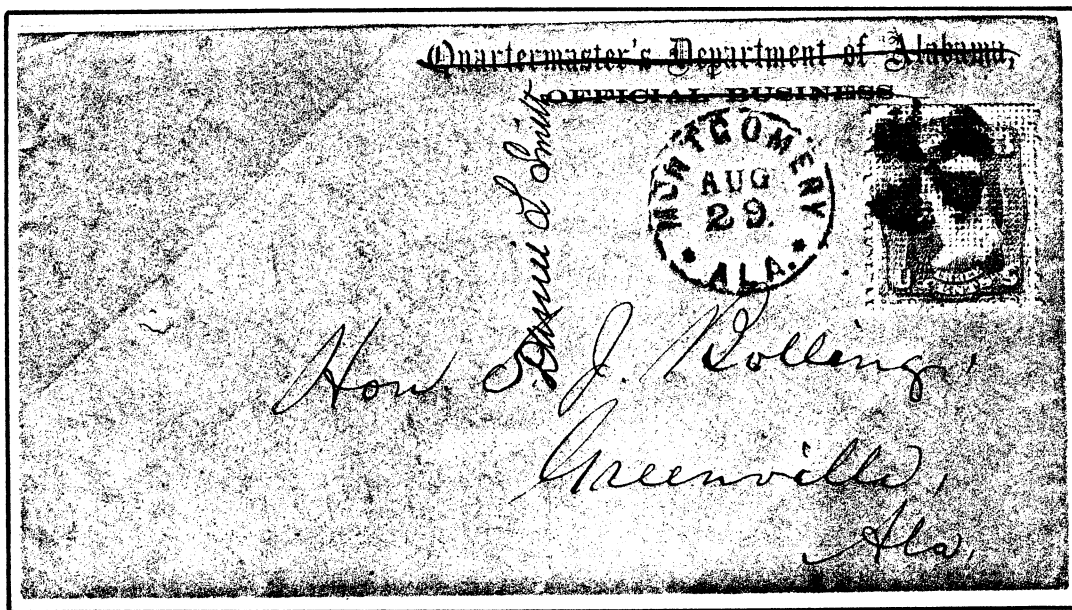
Printed by the National Bank Note Co.
Grilled Issues
1867

Type "C" Grill
with points up



BLUE (EX-MOODY, MAY BE UNIQUE
ON THIS STAMP)

Type "A" Grill, covering entire stamp
with points up



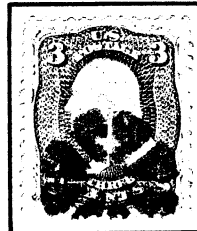
BLUE

P7C

Type "D" Grill
with points down



RED



BLUE

Printed by the National Bank Note Co.

Grilled Issues

1867

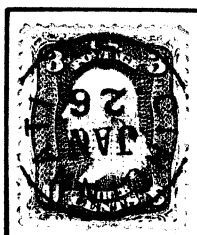
Type "E" Grill
with points down



RED (EX-HAAS)



RED



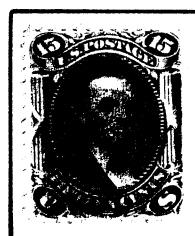
BLUE



RED/PURPLE



BLUE



RED

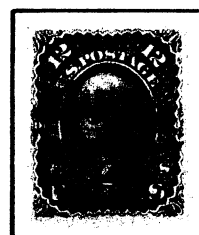
Type "Z" Grill
with points down



BLUE



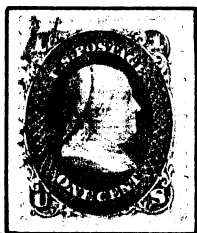
BLUE PTC



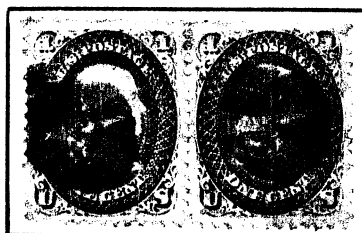
BLUE PTC

Printed by the National Bank Note Co.
Grilled Issues
1867

Type "F" Grill
with points down



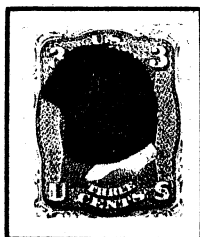
RED Blue



GREEN Pale Blue (SCOTT
GUARANTEE)



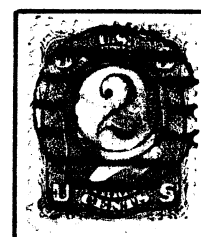
BLUE



Rose
DARK BLUE



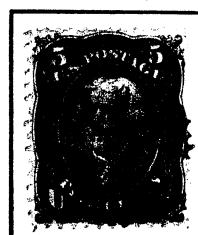
Rose Red
BLUE



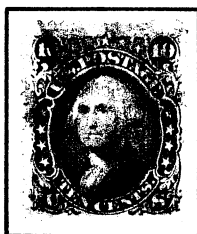
Red
BLUE



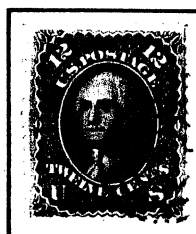
Brown
BLUE



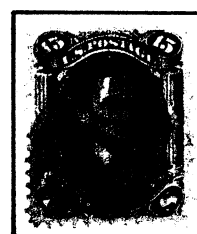
Dark Brown
BLUE



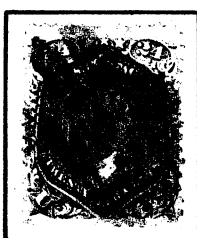
PURPLE



BLUE



BLUE



RED (SPLIT
GRILL)



BLUE



BLUE

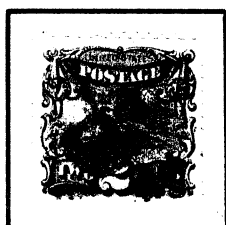
Printed by the National Bank Note Co.

1869

First Pictorial Issue



MAGENTA



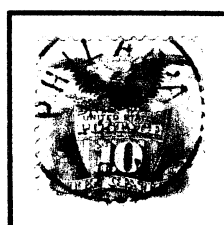
CHROME ORANGE
(EX-JUHRING)



APPLE GREEN (EX-JUHRING)



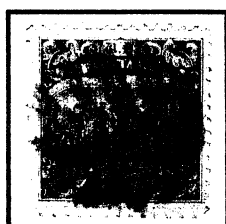
RED



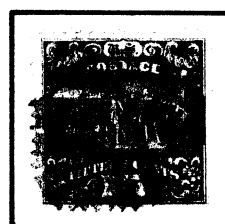
PURPLE P7C



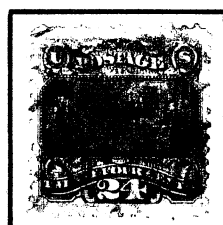
BLUE



RED Type I



RED Type II



RED



RED P7C



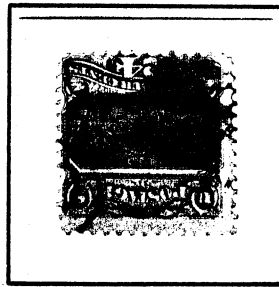
RED P7C

Printed by the National Bank Note Co.

1869

First Pictorial Issue

Invert



RED

This was the first U.S. issue to include bi-color stamps, and four values (fifteen, twenty-four, thirty, and ninety cents) were produced in two-color format. Bi-color stamps of this era required two separate plates and printings, one for each color. The centers, or vignettes, were printed first; the borders, or frames, second. If a sheet of paper was placed in the press in reverse position for the second printing, an "invert" was the result.

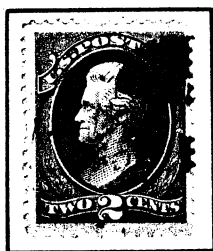
Three of the four bi-color values were erroneously produced with inverted frames, the ninety cent being free of the error. Indications are that likely only one sheet of each value was printed with inverted frames, though these copies are frequently, but incorrectly, referred to as "inverted centers". The belief is that fewer than 25 of this particular value exist today.

Printed by the National Bank Note Co.
1870-71

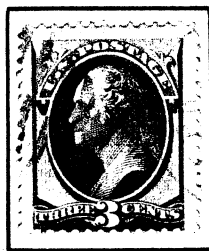
With "H" grill, except as indicated



BLUE



BLUE P7C



BLUE "I" grill



RED



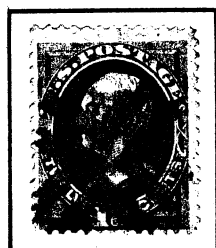
BLUE P7C



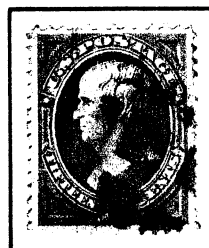
BLUE



RED



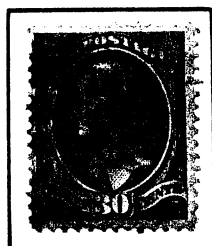
RED P7C



RED P7C



RED P7C (SPLIT GRILL)



RED



BLUE P7C

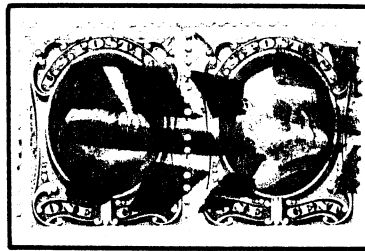
Printed by the National Bank Note Co.

1870-71

Without Grill



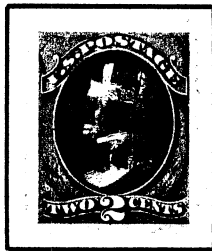
BROWN Ultramarine



BLUE Dark ultramarine



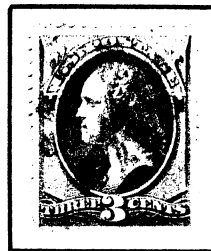
Pale ultramarine
GREEN



Red brown
BLUE



Orange brown
BLUE



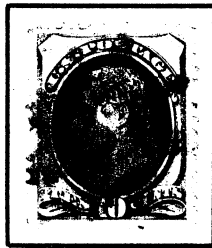
APPLE GREEN



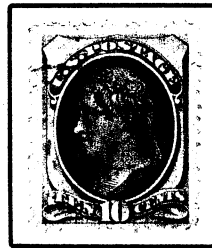
BLUE



BLUE



RED Brown



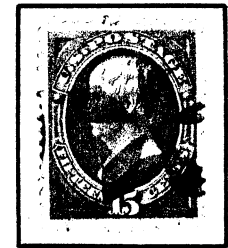
Yellow brown
RED



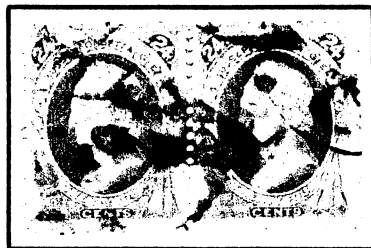
Dull violet
RED PTC



Dark violet
VIOLET



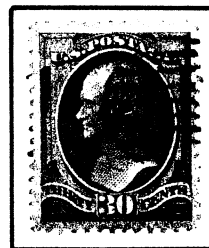
GREEN



BLUE Purple



Bright purple
RED



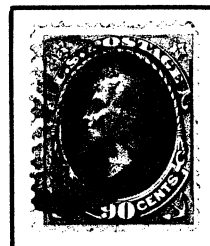
Black
RED



BLUE Full black



BLUE Carmine



Dark carmine
RED

Printed by the Continental Bank Note Co.

1873

With secret marks on the values from 1 - 15 cents



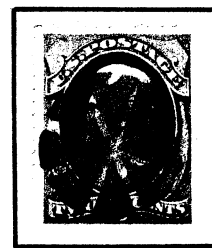
Ultramarine
PURPLE



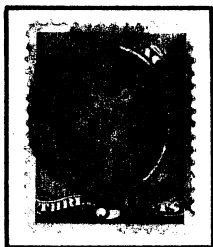
Dark ultramarine
RED



Dark brown
BLUE



Yellow brown
RED



Dark green
RED



Green
BLUE



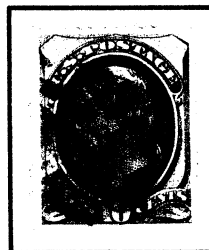
Dull pink
RED



Vermilion
BLUE



Orange vermilion
BLUE



Brown
PURPLE



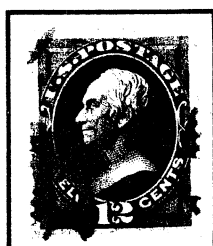
Dark brown
BLUE



Pale brown
BROWN P7C



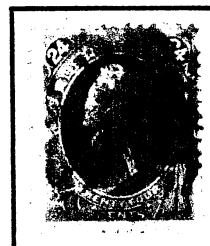
Yellow brown
RED



RED P7C



BLUE



RED P7C



RED



RED (EX-WAYD)

1875



BLUE

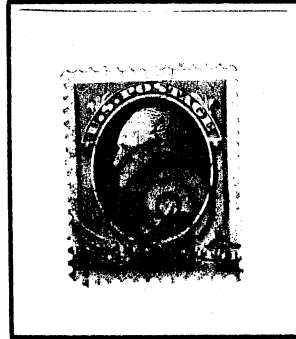


RED

PRINTED by BANK NOTE COMPANIES

1870 - 73

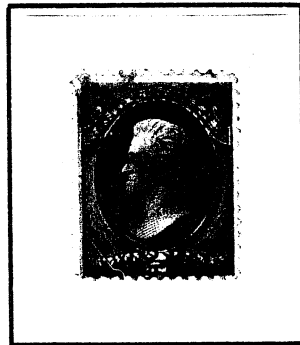
Double Impressions
National Bank Note Co.



BLUE

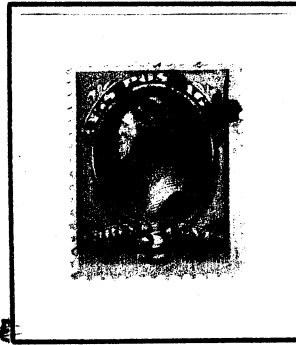
Second figure "3" at least 5mm to left, "TH" of
"THREE CENTS" also visible at bottom right edge

Continental Bank Note Co.



RED

P7C



PURPLE

(EX-WARD)

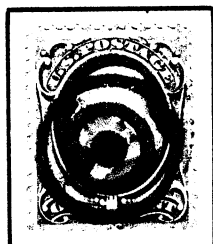
Left, double impression throughout; right, bottom only doubled

In this era stamps were printed one sheet of paper at a time, hand fed into the press. Occasionally, but only very rarely, a sheet would remain in the press, or not be completely removed, and receive a second impression. These are much scarcer than double transfers with which they should not be confused, as a double impression shows a clear doubling of the entire design, not just partially as in a double transfer which is actually a plate imperfection.

Printed by the American Bank Note Co.

1879

Soft Porous Paper



BLUE Gray Blue



YELLOW Blue



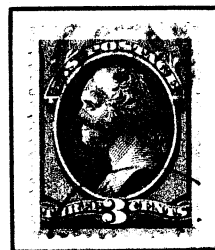
BLUE Dark Ultramarine



BLUE



Dark Green
PURPLE



Light Green
PURPLE



RED



PURPLE Dull Pink

No Secret Mark



BLUE Pink



BLUE Brown Rose
With Secret Mark



PURPLE Brown



Yellow Brown
PURPLE



Yellow Brown
RED



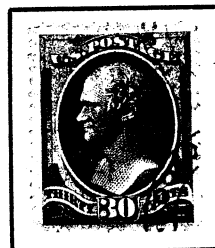
Brown
MAGENTA



Red Orange
PURPLE



Orange
BLUE



PURPLE

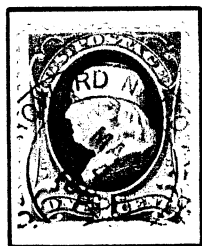


PURPLE

Printed by the American Bank Note Co.

1881 - 83

Re-engraved, plus new value and designs



BLUE



PURPLE
Red Brown



PURPLE
Dark Red Brown



PURPLE
Orange Brown



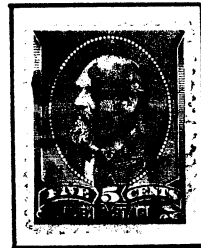
PURPLE



PURPLE



PURPLE
Yellow Brown



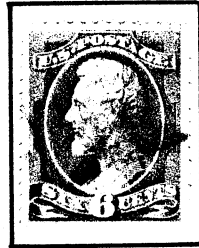
MAGENTA
Brown



BLUE
Gray Brown



PURPLE
Rose



PURPLE
Pale Rose



PURPLE
Red Brown



PURPLE
Orange Brown



PURPLE
Yellow Brown



PURPLE
Brown

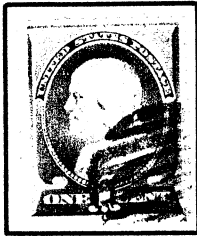


PURPLE
Black Brown

Printed by the American Bank Note Co.

1887 - 88

New Design and Color Changes



RED
Ultramarine



PURPLE
Bright Ultramarine



PURPLE
Blue



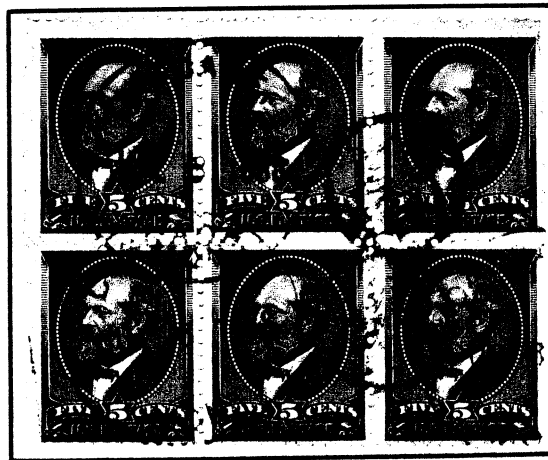
PURPLE



PURPLE



BLUE



PURPLE



PURPLE
Orange Brown



PURPLE
Deep Orange Brown



RED (EX-COLOR)
Purple



PURPLE
Bright Purple

Printed by the American Bank Note Co.

1890-93



PURPLE Blue



PURPLE Ultramarine



BROWN Pale blue



PURPLE Lake



PURPLE Cap on
left "2"



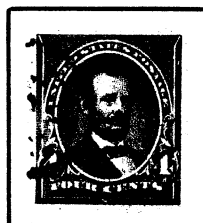
PURPLE Cap on
both "2's"



GREEN Carmine



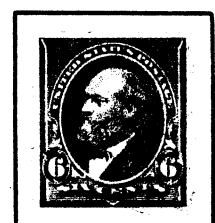
PURPLE



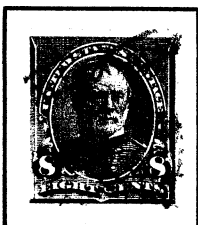
PURPLE



PURPLE



BLUE



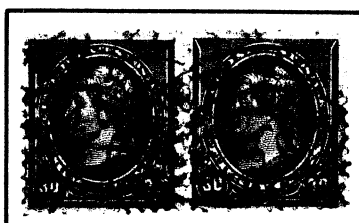
MAGENTA



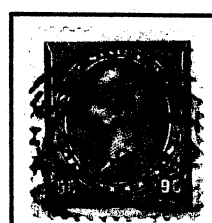
PURPLE



PURPLE



PURPLE



PURPLE (Jumbo)
Red orange

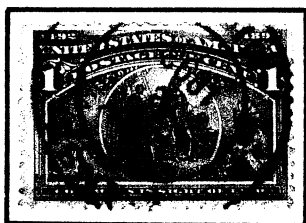


PURPLE Orange

Printed by the American Bank Note Co.

1893

Columbian Exposition Issue



PURPLE



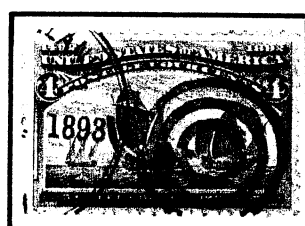
GREEN
"Broken Hat"



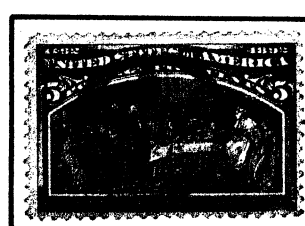
PURPLE



PURPLE



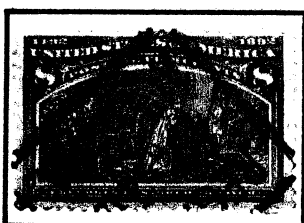
PURPLE



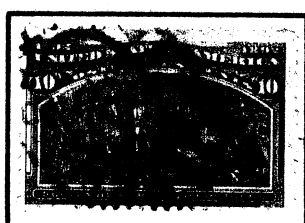
PURPLE



PURPLE



PURPLE



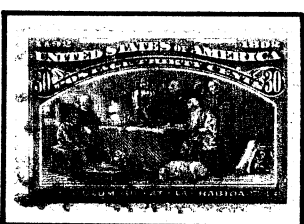
PURPLE
Black Brown



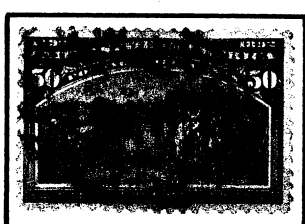
MAGENTA
Gray Black



REDDISH



MAGENTA



PURPLE



PURPLE



PURPLE



PURPLE

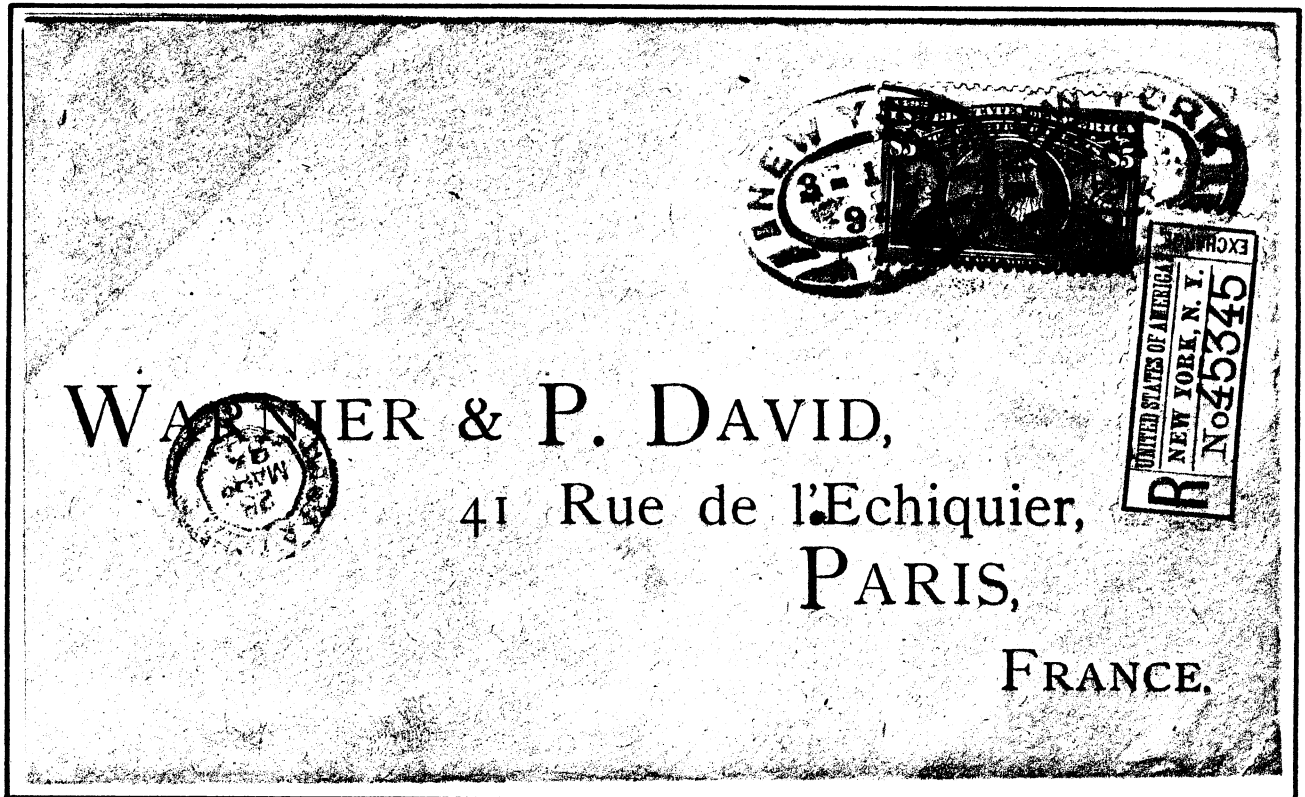


PURPLE

Printed by the American Bank Note Co.

1893

Columbian Exposition Issue



MAGENTA

1894

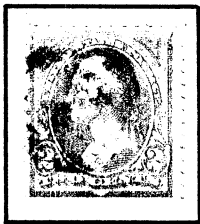
Beginning in 1894 the Bureau of Engraving and
Printing took over the production of all U.S. stamps



PURPLE
Ultramarine



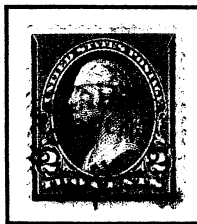
PURPLE
Blue



PURPLE
Pink
Tri. I



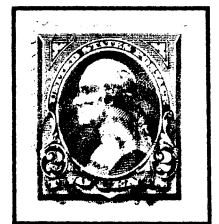
BROWNISH
Carmine Lake
Tri. I



BLUE
Carmine
Tri. I



BLUE
Carmine
Tri. II



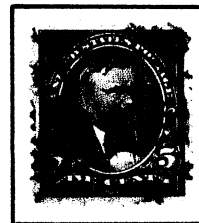
PINK
Pale Carmine
Tri. III



PURPLE



MAGENTA



PURPLE



PURPLE



PURPLE



PURPLE



PURPLE



RED



SAT. PURPLE
Type I



PURPLE
Type II



RED



PURPLE

1895

Beginning in 1895 all regular issues were produced on paper with a double line USPS watermark



BLUE Blue



PURPLE Dark Blue



BLUE Tri. I



PURPLE Tri. II



GREEN Tri. III



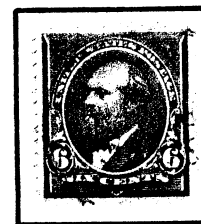
BLUE



PURPLE



PURPLE



BLUE



PURPLE



GREEN



BLUE



PURPLE Orange



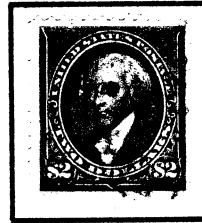
MAGENTA Red Orange



BLUE Type I



PURPLE Type II



BLUE Bright Blue



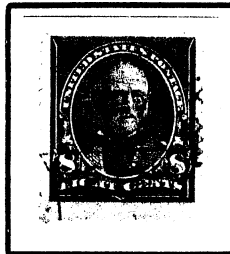
BLUE Dark Blue



PURPLE

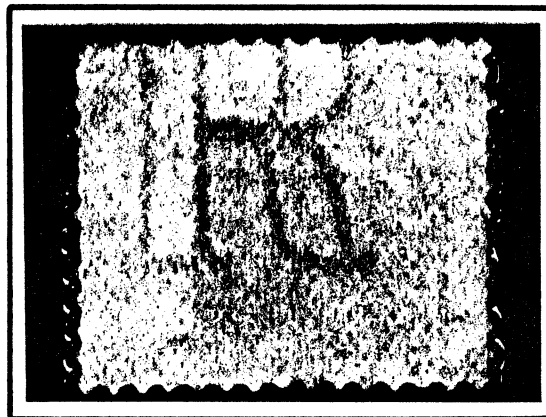
1895

Paper Error



PURPLE (SHIELD)

Paper watermarked USIR ("U S Internal Revenue") was initiated in 1878, followed in 1895 by USPS ("U S Postage Stamp"). To date three instances of incorrect use of paper - - - USIR for regular issues - - - - have occurred: the six and eight cent values of this issue and the \$1.00 Presidential of 1938.



1898

Change of Colors



~~PURPLE~~ Green



~~PURPLE~~ Yellow Green



~~PURPLE~~ Red



~~BLUE~~ Orange Red



~~PURPLE~~ Rose Carmine



~~PURPLE~~ Rose Brown



~~BLUE~~ Orange Brown



Lilac Brown
~~PURPLE~~



~~BLUE~~ Dark Blue



BRIGHT
~~PURPLE~~ Blue



~~PURPLE~~ Lake



~~PURPLE~~ Claret

- - Type I - -

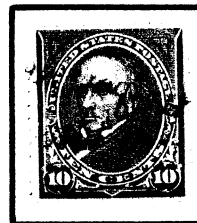
- - - - Type II - - - -



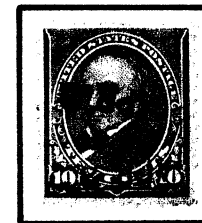
Brown
~~PURPLE~~



Dark Brown
~~PURPLE~~



Orange Brown
~~PURPLE~~



Brown
~~PURPLE~~



Yellow Brown
~~PURPLE~~



~~PURPLE~~

1898

Trans-Mississippi Exposition Issue



BRIGHT PURPLE



BRIGHT PURPLE



PURPLE



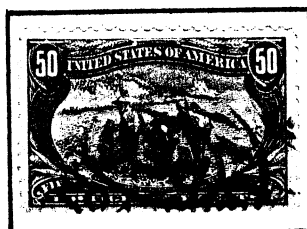
MAGENTA



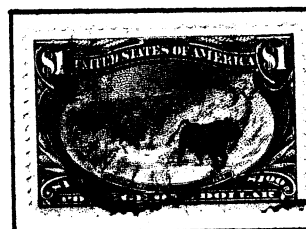
BRIGHT PURPLE



BRIGHT PURPLE



PURPLE



PURPLE

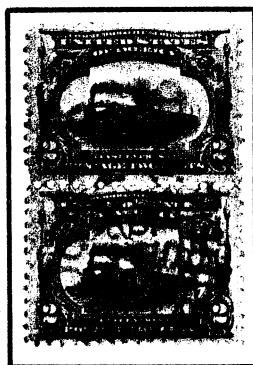


PURPLE

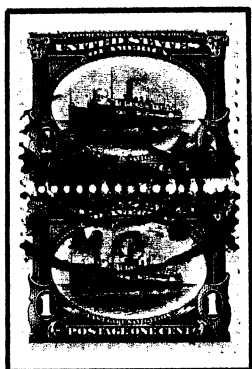
P7C

1901

Pan-American Exposition Issue



PURPLE



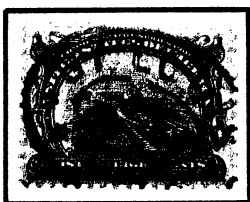
BLUE



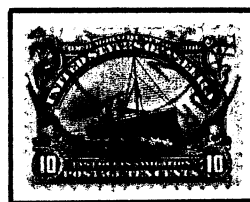
BLUE



PURPLE



BLUE



BLUE

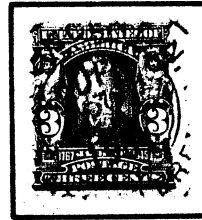
1902 - 03



PURPLE



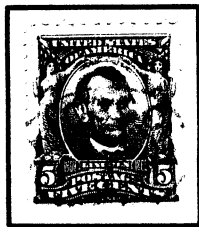
PURPLE



PURPLE



PURPLE



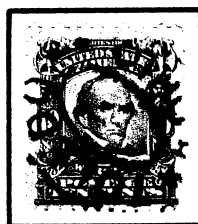
MAGENTA



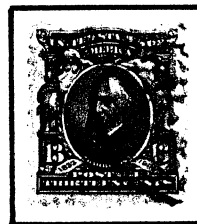
BLUE



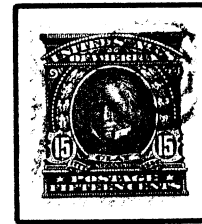
BRT. PURPLE



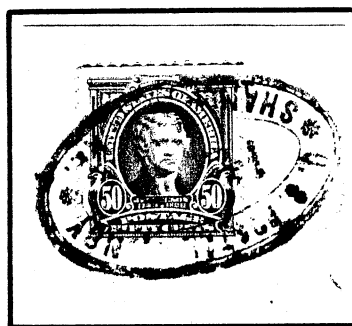
DEEP PURPLE



PURPLE



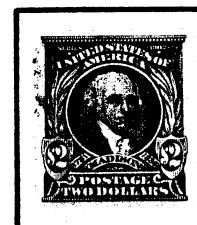
PURPLE



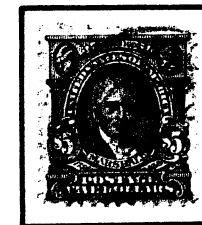
PURPLE



REDDISH PURPLE

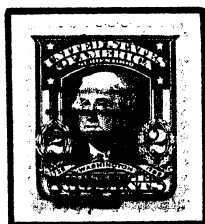


BLUE

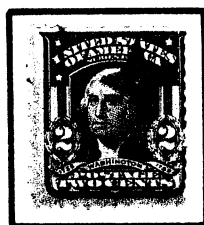


MAGENTA

1903



GREEN Carmine



BLUE Lake



Carmine rose
REDDISH PURPLE



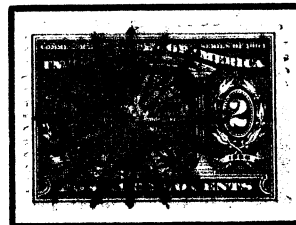
Scarlet
BRT. PURPLE

1904

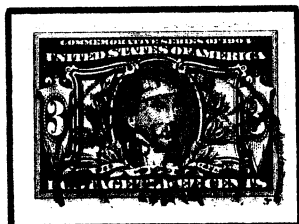
Louisiana Purchase Exposition Issue



PURPLE



PURPLE



PURPLE

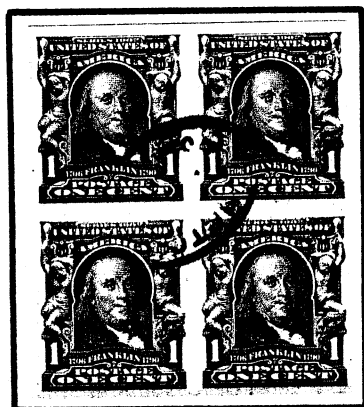


BLUE



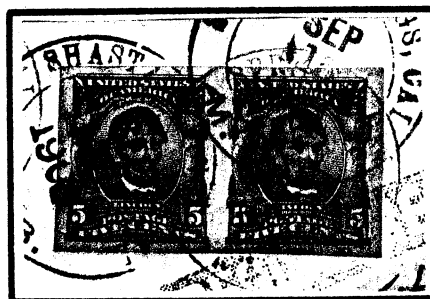
BLUE

1906 - 08
Imperforate



PURPLE

P.F.C.



MAGENTA

P.F.C.

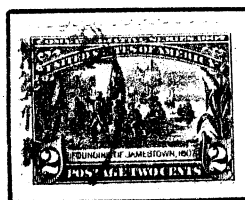


PURPLE

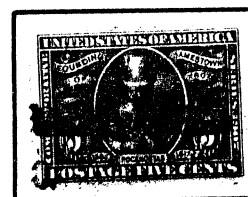
1907
Jamestown Exposition Issue



PURPLE



PURPLE



PURPLE

1908 - 09
Perforated 12



RED



PURPLE



PURPLE



PURPLE



PURPLE



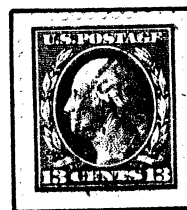
PURPLE



PURPLE



RED



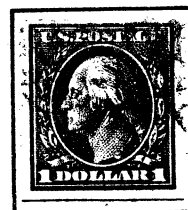
PURPLE



PURPLE



PURPLE

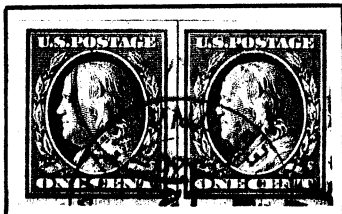


PURPLE

1908 - 09
Imperforate



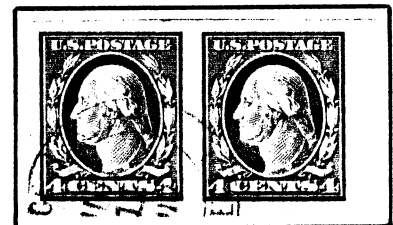
BLUE



PURPLE



RED



PURPLE

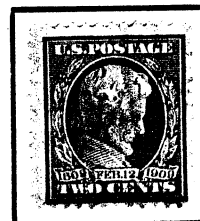


RED

1909
Commemorative Issues
Perforated 12 and Imperforate
Lincoln Memorial



BLUE

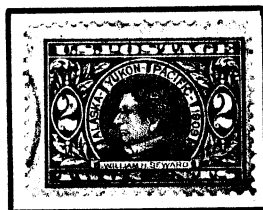


GREEN
Bluish Experimental Paper

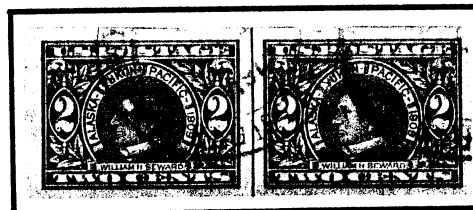


PURPLE

Alaska - Yukon Pacific Exposition



PURPLE

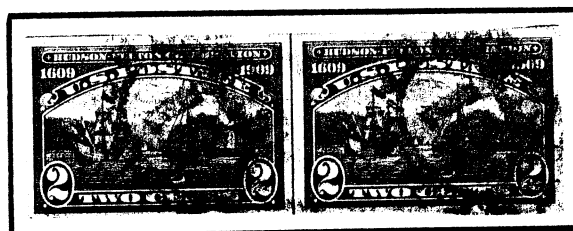


PURPLE

Hudson - Fulton



BLUE

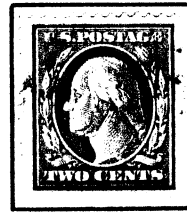


PURPLE

1910 - 11
 Watermarked Single Line USPS
 Perforated 12



MAGENTA



PURPLE



PURPLE



REDDISH PURPLE



PURPLE



BLUE/PURPLE



PURPLE

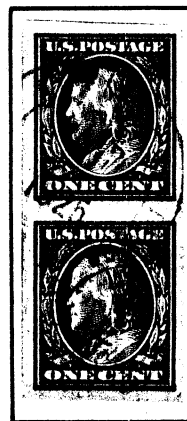


BLUE (SHIP)

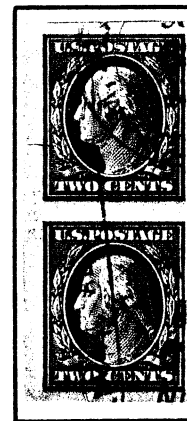


PURPLE

1911
 Imperforate

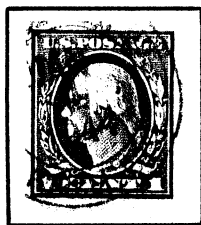


PURPLE



PURPLE

1912
Imperforate



PURPLE
Yellow green



PURPLE
Green



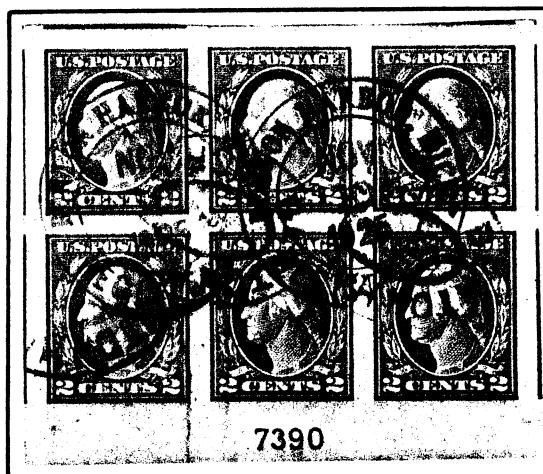
RED
Dark green



PURPLE
Carmine

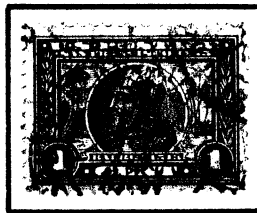


PURPLE
Deep carmine

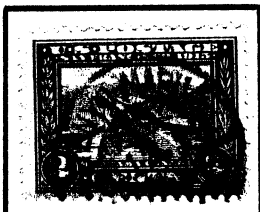


PURPLE
Scarlet

1913
Panama - Pacific Issue
Perforated 12



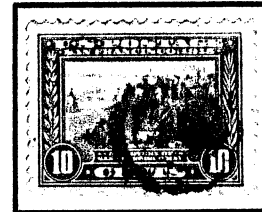
PURPLE



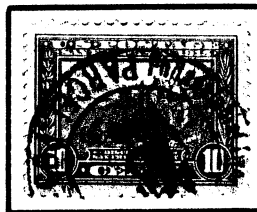
PURPLE (JAP SHIP)



PURPLE (JAP SHIP)



PURPLE
Orange Yellow



PURPLE Orange

1914 - 15
Perforated 10



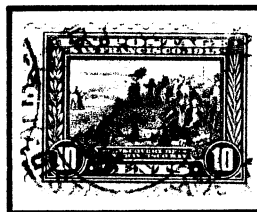
PURPLE



BLUE



MAGENTA (JUMBO)



PURPLE

1912 - 14
Perforated 12



PURPLE



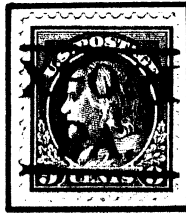
PURPLE



PURPLE



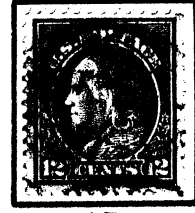
PURPLE



DEEP PURPLE



PURPLE



PURPLE



PURPLE



MAGENTA



PURPLE

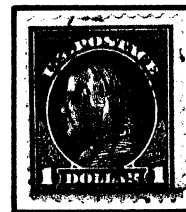


PURPLE

1912
Watermarked Double Line USPS

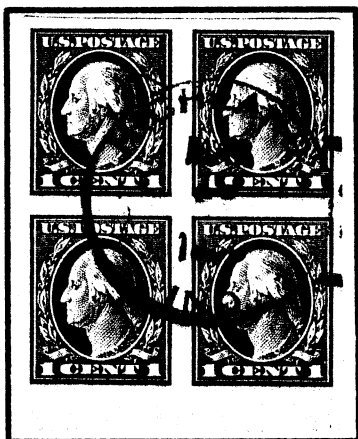


PURPLE



DEEP PURPLE

1916 - 17
Imperforate



PURPLE Green



Yellow green
PURPLE



Deep green
PURPLE (1ST FLIGHT)



PURPLE Type I

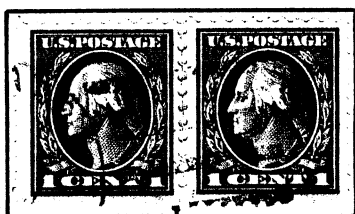


PURPLE Type I



PURPLE Type II

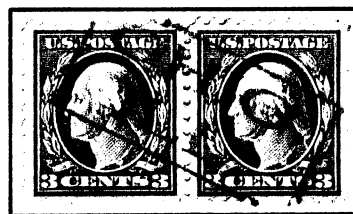
1914 - 15
Watermarked Single Line USPS
Perforated 10



PURPLE



BLUE



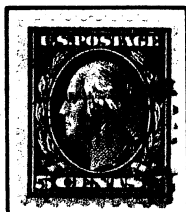
PURPLE



"Pink Back" (Aniline ink)
PURPLE



PURPLE



PURPLE



PURPLE



PURPLE



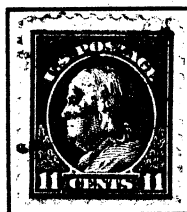
PURPLE



PURPLE



PURPLE



PURPLE



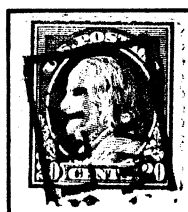
Claret Brown
DEEP PURPLE



Copper Red
PURPLE



PURPLE



REDDISH
PURPLE

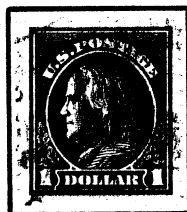


PURPLE



PURPLE

1915
 Flat Plate Printing
 Perforated 10
 Watermarked Double Line USPS



PURPLE
 1916 - 17

Unwatermarked



RED



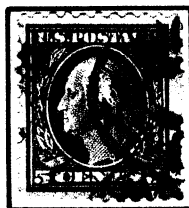
PURPLE (SHIP)



PURPLE



PURPLE



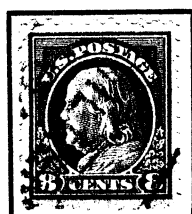
PURPLE



ART. PURPLE



PURPLE



PURPLE



PURPLE



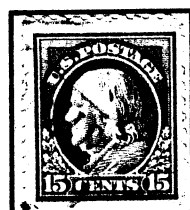
PURPLE (SHIP)



REDDISH PURPLE



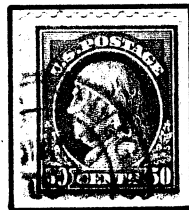
PURPLE



PURPLE



MAGENTA



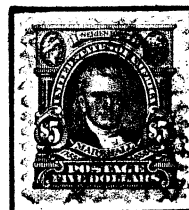
PURPLE



BLUE

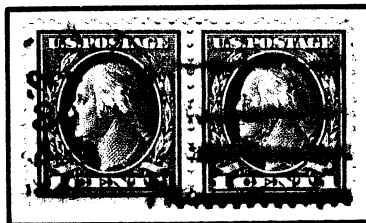


PURPLE



PURPLE

1917 - 19
Flat Plate Printing
Perforated 11



PURPLE



PURPLE
Type I



PURPLE
Type Ia



BRT. PURPLE
Type I



PURPLE
Type II



BROWN



PURPLE



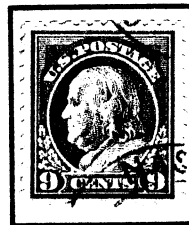
PURPLE



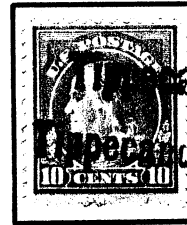
BRT. PURPLE



BLUE



PURPLE



BRT. PURPLE



BLUE



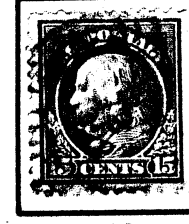
PURPLE
Claret Brown



PURPLE
Brown Carmine



BRT. PURPLE



PURPLE



PURPLE



PURPLE (Jumbo)



PURPLE

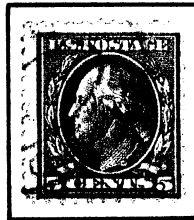


MAGENTA

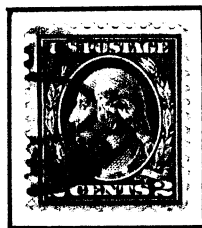
1917 - 19

Erroneous Re-entry

The "Five Cent Error"



PURPLE
(ERROR)



PURPLE
(NORMAL)



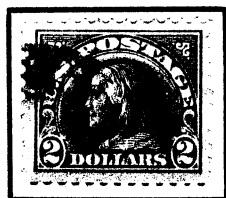
PURPLE
(NORMAL)



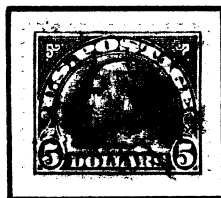
PURPLE

Five cent value in the color of the two cent. Plate #7942 had three positions imperfect when the plate was made. These impressions were removed, and the positions re-entered - - - - but incorrectly using a five cent relief instead of a two, since the figure "5" in mirror image very closely resembles a "2".

1918



PURPLE



PURPLE

1918 - 20

Offset Printing



MAGENTA



Type IV
PURPLE



Type V
PURPLE



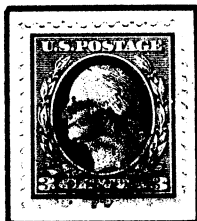
Type Va
PURPLE



Type VI
PURPLE



Type VII
PURPLE

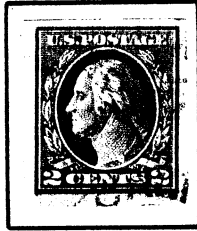


Type III
PURPLE



Type IV
PURPLE

1918 - 20
Imperforate



Type V
PURPLE



PURPLE



Type Va
PURPLE



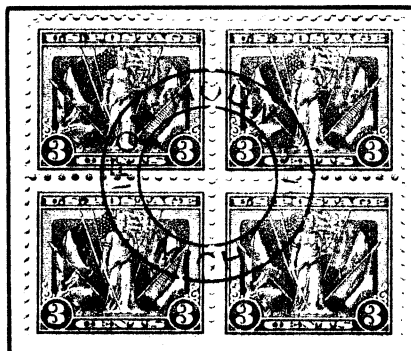
Type IV
PURPLE

Perforated 12½



PURPLE

1919
Flat Plate Printing
Perforated 11
Victory Issue



BLUE

1919 - 21
Rotary Press Printing
Perforated 11 X 10



RED



PURPLE
Type III



PURPLE (SEE FLIGHT)

Perforated 10 X 11



PURPLE

1919 - 21

Perforated 10



PURPLE
Green



PURPLE
Deep green



PURPLE
Yellow green

Flat Plate Printing

1920



DEEP PURPLE

Pilgrim Tercentenary Issue



RED

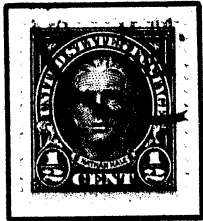


PURPLE

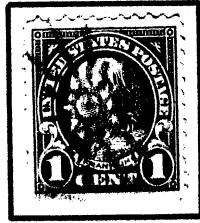


PURPLE

1922 - 25
Perforated 11



PURPLE



PURPLE



PURPLE



PURPLE



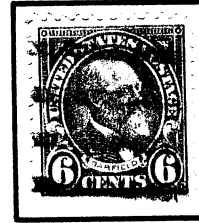
PURPLE



PURPLE



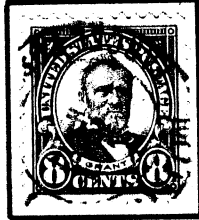
RED



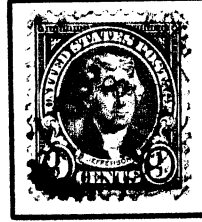
PURPLE



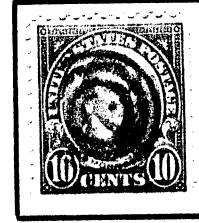
PURPLE



PURPLE



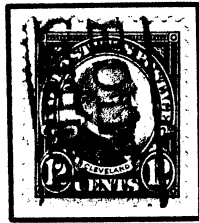
PURPLE



BLUE



MAGENTA



DEEP RED



PURPLE



PURPLE



BLUE



BLUE



PURPLE



PURPLE



GREEN

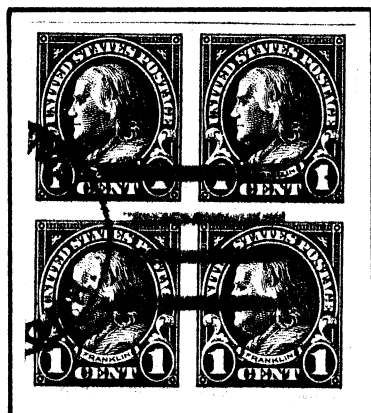


PURPLE



PURPLE

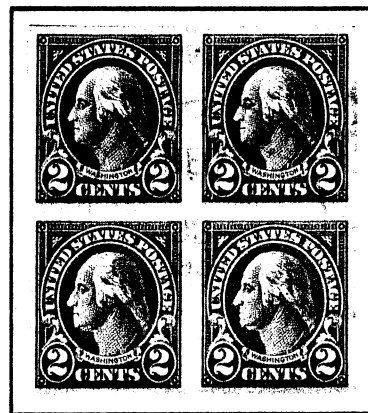
1923 - 25
Imperforate



RED



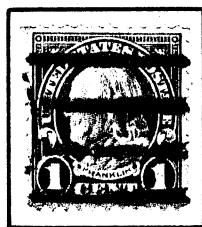
PURPLE (1ST FLIGHT)



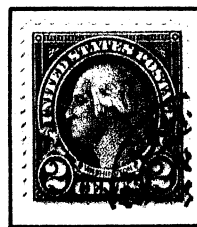
BLUE

Rotary Press Printing

1923 - 26 Perforated 11X10
on one cent, and 11 on two cent



PURPLE



PURPLE P7C

Perforated 10



PURPLE



PURPLE



PURPLE



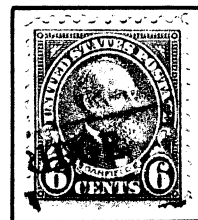
PURPLE



PURPLE



PURPLE



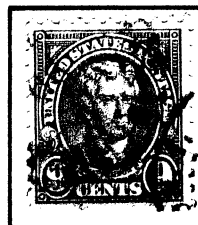
PURPLE



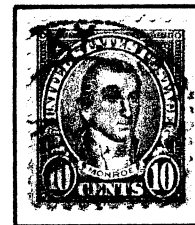
PURPLE



PURPLE



BLUE



PURPLE

1923

Harding Memorial Issue

Flat Plate Printing
Perforated 11



PURPLE

Rotary Press Printing
Perforated 10



PURPLE

Flat Plate Printing
Imperforate

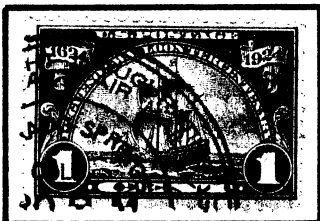


MAGENTA

1924

Perforated 11

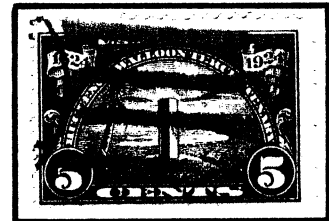
Huguenot - Walloon Tercentenary Issue



PURPLE (1ST FLIGHT)



PURPLE (1ST FLIGHT)
1925



RED

Norse - American Issue



PURPLE

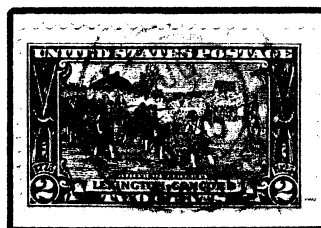


PURPLE

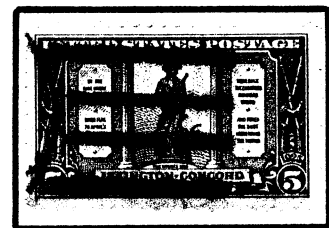
Lexington - Concord Issue



PURPLE



PURPLE (JUMBO)



RED

AIR POST
Unwatermarked
Perforated 11

1918



PURPLE Orange (1ST FLIGHT)



PURPLE Pale orange



PURPLE



PURPLE

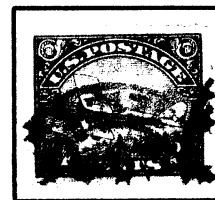
1923



PURPLE (1ST FLIGHT)



PURPLE (1ST FLIGHT)



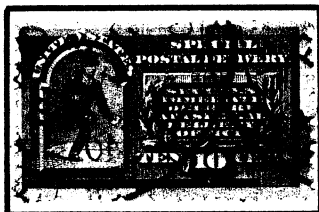
BLUE

SPECIAL DELIVERY STAMPS

Unwatermarked

Perforated 12

1885



PURPLE

1888



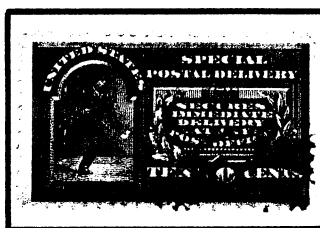
PURPLE

Columbian Exposition Issue
1893



BRT. PURPLE

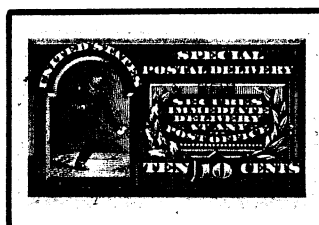
1894



Line under "TEN CENTS"
PURPLE

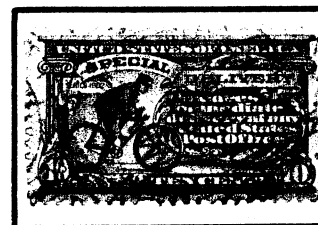
Watermarked double line USPS

1895



PURPLE

1902



MAGENTA

SPECIAL DELIVERY STAMPS

Watermarked double line USPS

Perforated 12

1908

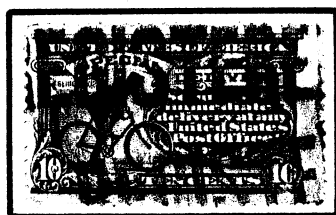


MAGENTA

Watermarked single line USPS

Perforated 12

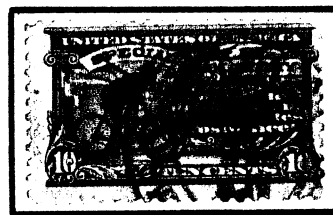
1911



PURPLE

Perforated 10

1914

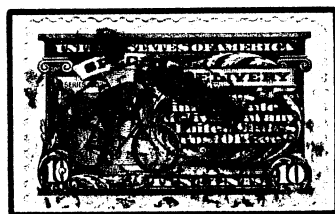


PURPLE

Unwatermarked

Perforated 10

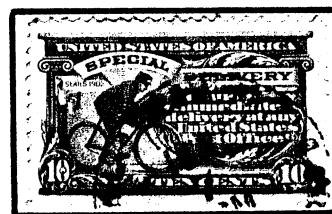
1916



PURPLE

Perforated 11

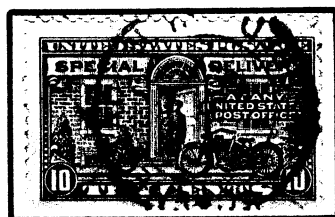
1917



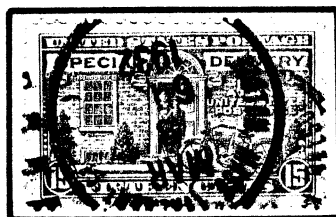
PURPLE

Perforated 11

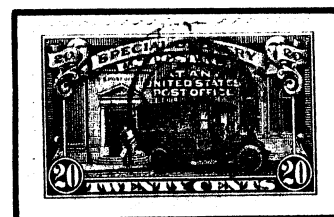
1922-25



PURPLE



DEEP PURPLE



RED

POSTAGE DUE
Unwatermarked
Printed by the American Bank Note Co.
Perforated 12

1879

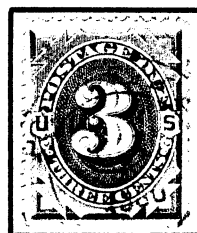
Brown



BLUE



RED



BLUE



BLUE



RED



RED



RED

1884-89

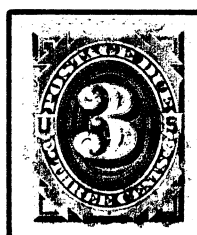
Red Brown



BLUE



BLUE



LAUENDAR



PURPLE



BLUE



BLUE



PURPLE

POSTAGE DUE

1891-93

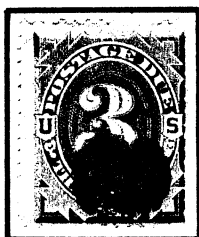
Claret



PURPLE



PURPLE



PURPLE



PURPLE



PURPLE



PURPLE

1894

Printed by the Bureau of Engraving & Printing
Vermilion



PURPLE



PURPLE

Claret



PURPLE



RED



PURPLE



PURPLE



BLUE



PURPLE

POSTAGE DUE
1895
Watermarked Double Line USPS



PURPLE



PURPLE



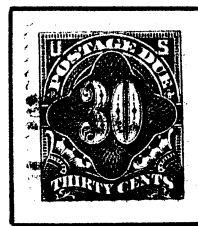
PURPLE



PURPLE



PURPLE



BLUE

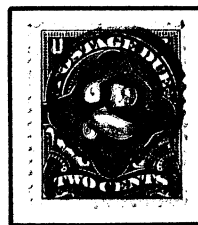


BLUE

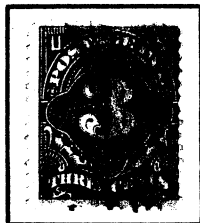
1910 - 12
Watermarked Single Line USPS



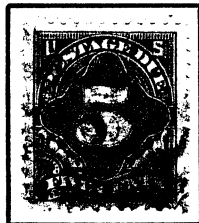
PURPLE



PURPLE



PURPLE



PURPLE



PURPLE



PURPLE

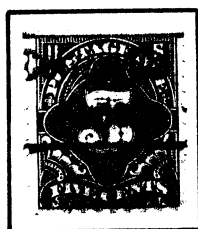
POSTAGE DUE
1914 - 15
Perforated 10



PURPLE



PURPLE



PURPLE



PURPLE



PURPLE



BLUE

1916
Unwatermarked



PURPLE



PURPLE

1917 - 25
Perforated 11



PURPLE



PURPLE



PURPLE



PURPLE



PURPLE



PURPLE



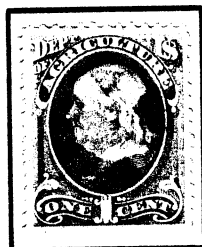
PURPLE



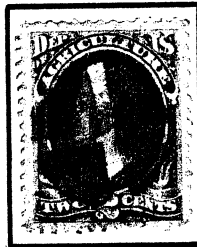
BLUE

OFFICIAL
Printed by the Continental Bank Note Co.
1873

Department of Agriculture



PURPLE



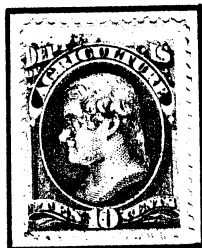
RED



PURPLE



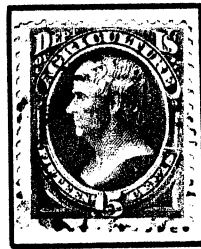
BLUE



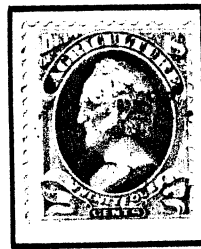
PURPLE



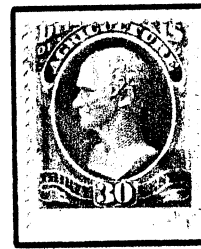
PURPLE



PURPLE



PURPLE



RED

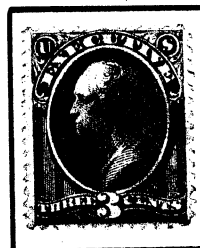
Executive Department



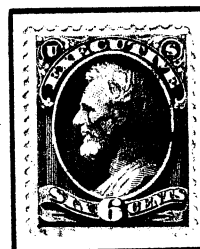
RED



RED



PURPLE



PURPLE



PURPLE

Department of Interior



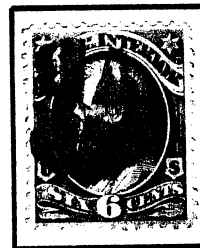
BLUE



RED



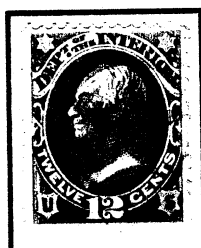
BLUE



RED



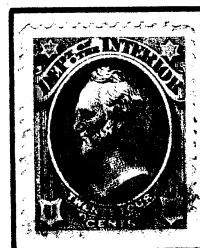
PURPLE



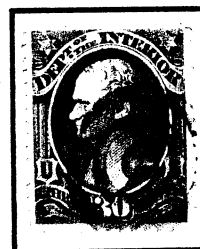
PURPLE



BLUE



PURPLE



BLUE



PURPLE

OFFICIAL

Department of Justice



BLUE



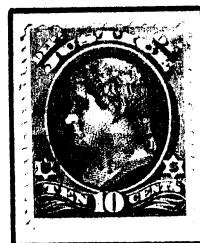
RED



BLUE



BLUE



VIOLET



VIOLET



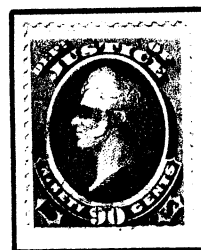
BLUE



BLUE



BLUE



BLUE

Navy Department



RED



RED



VIOLET



VIOLET



RED



BROWN



VIOLET



RED



RED



BLUE



PINK

OFFICIAL

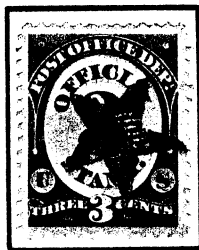
Post Office Department



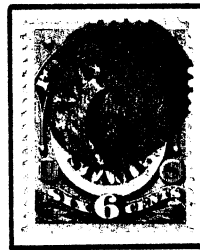
PURPLE



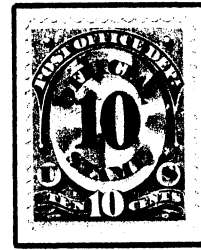
RED



PURPLE



BLUE



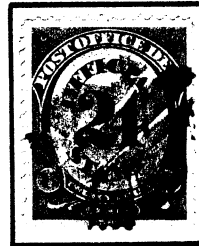
BLUE



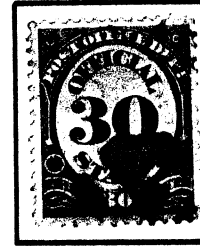
BLUE



BLUE



BLUE



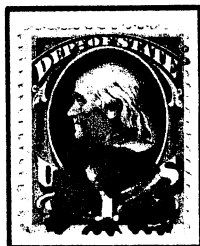
BLUE



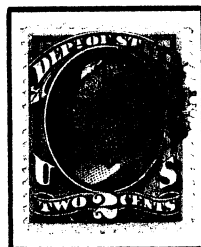
BLUE

OFFICIAL

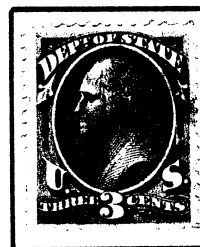
State Department



RED



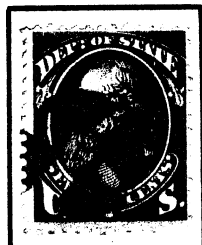
RED



PURPLE



RED



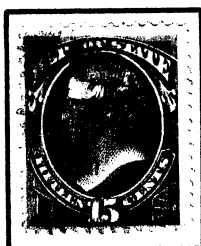
BRT. VIOLET



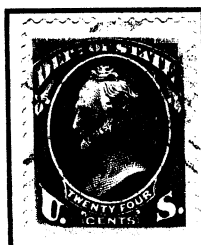
BRT. VIOLET



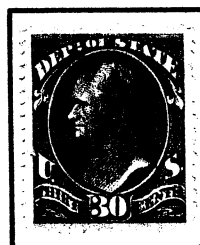
RED



PURPLE



PURPLE



PURPLE



PURPLE



BLUE



BLUE



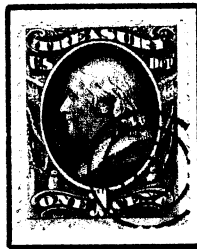
BLUE



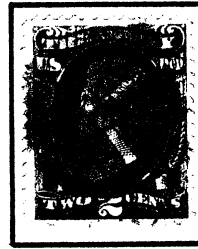
BLUE

OFFICIAL

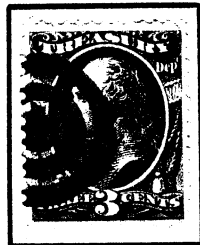
Treasury Department



BLUE



RED



BLUE



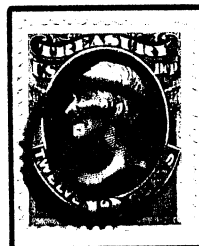
BLUE



BLUE



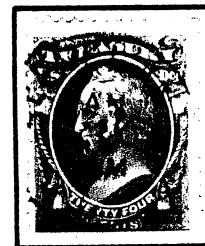
PURPLE



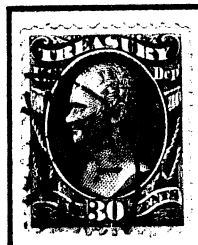
BLUE



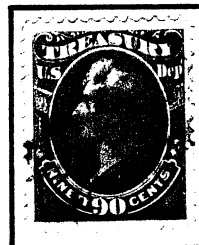
PURPLE



BLUE



BLUE



PURPLE

OFFICIAL

War Department



RED



RED



BLUE



BLUE



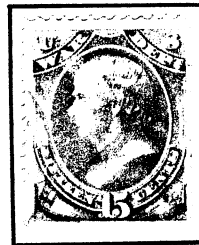
MAGENTA



PURPLE



MAGENTA



PURPLE



PURPLE



BLUE



BLUE

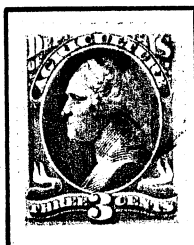
OFFICIAL

Printed by the American Bank Note Co.

Soft Porous Paper

1879

Department of Agriculture



PURPLE

Department of Interior



PURPLE



PURPLE



PURPLE



GREEN



BLUE



PURPLE

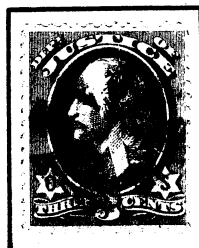


BLUE



BLUE (P.F.C.)

Department of Justice



PURPLE



PURPLE

OFFICIAL

Post Office Department

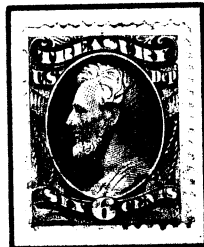


MAGENTA

Treasury Department



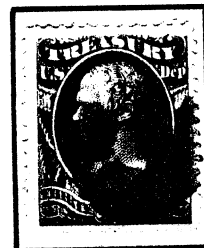
BLUE



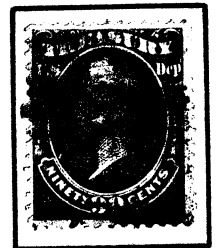
PURPLE



PURPLE



BLUE

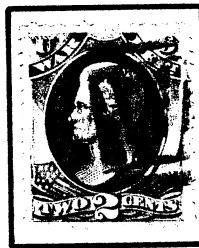


BLUE

War Department



BLUE



BLUE



MAGENTA



BLUE



BLUE



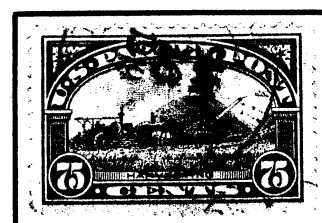
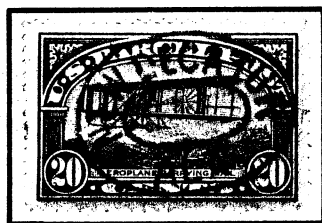
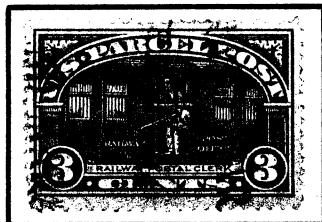
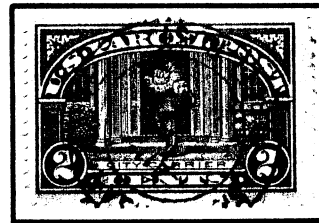
PURPLE



PURPLE

PARCEL POST
1912 - 13
Watermarked Single Line USPS
Perforated 12

ALL PURPLE



POSTAL SAVINGS

Perforated 12

1910 - 11

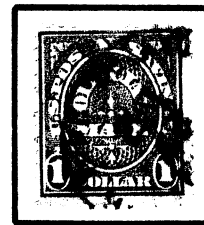
Watermarked Double Line USPS



PURPLE



RED



MAGENTA

1911

Watermarked Single Line USPS



MAGENTA



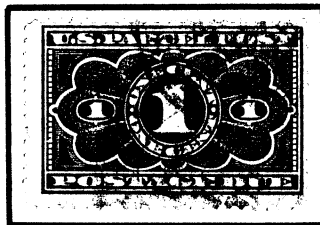
PURPLE



PURPLE

PARCEL POST POSTAGE DUE

1912



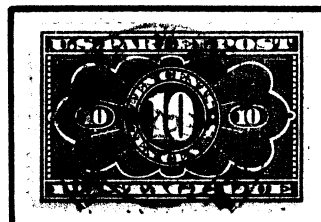
PURPLE



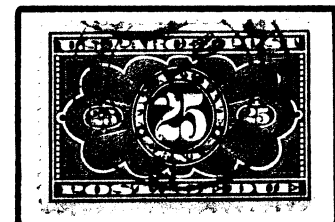
BLUE



PURPLE



PURPLE

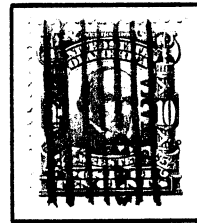
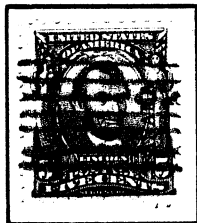
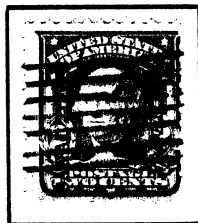


PURPLE

ISSUED UNDER U.S. ADMINISTRATION

Canal Zone

1904 (U.S. issue of 1902-03 overprinted)



— ALL PURPLE —
Cuba

1899 (U.S. issues of 1895 and 1898 overprinted)



BLUE



BLUE
Carmine



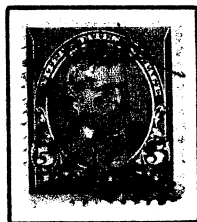
PURPLE
Red



PURPLE



BLUE



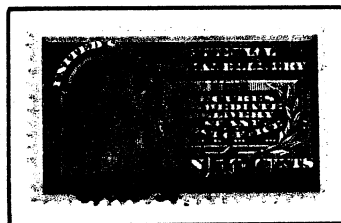
BLUE



PURPLE

Special Delivery

1899 (U.S. Special Delivery issue of 1895 overprinted)



PURPLE

Postage Due

1899 (U.S. Postage Due issue of 1895 overprinted)



— ALL PURPLE —

ISSUED UNDER U.S. ADMINISTRATION

Guam

1899

U.S. issues of 1895 and 1898 overprinted



PURPLE



Carmine
PURPLE



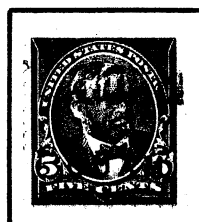
Red
BLUE



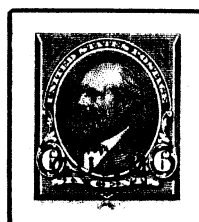
PURPLE



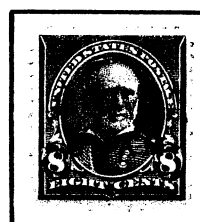
PURPLE



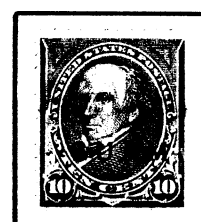
BLUE



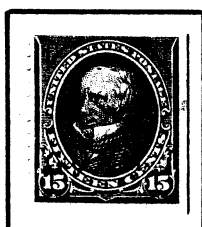
BLUE



BLUE



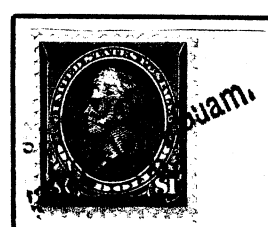
Type I
BLUE



BLUE



BLUE



Type I
PURPLE

Special Delivery

1899

U.S. Special Delivery issue of 1895 overprinted



Type I
PURPLE

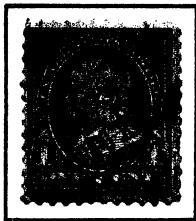


PURPLE Type II
Dots in curved frame
above messenger

ISSUED UNDER U.S. ADMINISTRATION
Puerto Rico

1899

U.S. issues of 1895 & 1898 overprinted at 36 degree angle



BLUE



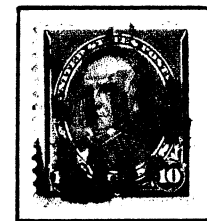
PURPLE



PURPLE



PURPLE



PURPLE

U.S. issues of 1895 & 1898 overprinted at 25 degree angle



BLUE



BLUE



DEEP PURPLE

1900

U.S. issues of 1895 & 1898 overprinted



BLUE



BLUE
Carmine



BLUE
Orange red

Postage Due

1899

U.S. Postage Due issue of 1895 overprinted at 36 degree angle



BLUE



BLUE

Printed by Toppan, Carpenter, Casilear & Co.

1851-56, Imperforate

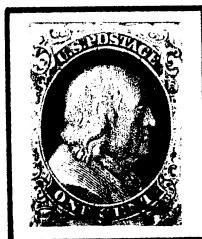
Multiple Transfers

These multiple transfers occur during the making of the printing plate when the impression of the stamp is entered from the transfer roll a second, or in one instance a third, time in the same relative position on the plate.



BLUE Type II, 88-89-90R2 (EX-ISHIKAWA)

The center stamp, 89R2, shows at the bottom the most pronounced double transfer on any regular issue U. S. stamp reported to date. This was caused by a second fresh entry slightly above that of the first.



RED

(EX-ISHIKAWA)

Type IIIa, 81L1E

This double transfer is unusual in that the first entry by the transfer roll is in an inverted position on the plate. There is only one other instance of this in U.S. stamps, and that is the position just above this one on the plate, 71L1E, and which is classified as a type II.



BLUE Type II, 91-92-93L1E (EX-CIPOLLA)

Stamp at left, 91L1E, is the triple transfer, one of which is inverted. The first entry by the transfer roll was in an inverted position; the second entry was normal; the third was a re-entry and out of position in relation to the second entry.

PLATE VARIETIES, FREAKS, UNUSUAL ITEM

Se-tenant Pairs

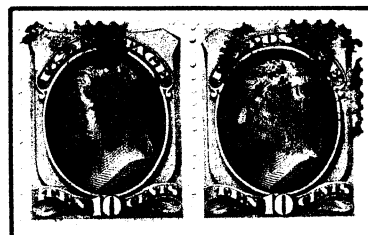
At left: created by differences in engraved design when plate was made and/or reworked; at right: "secret mark" added to left stamp in order to identify work of two different companies when a contract switch was made.



BLUE

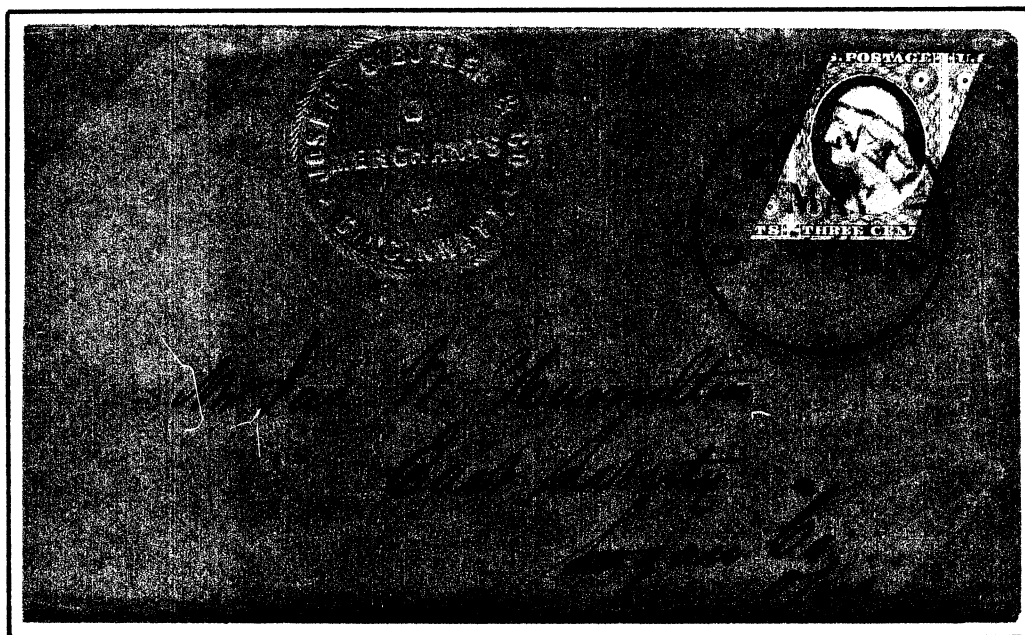
Type IIIa
(Pos. 51R1E)

Type II
(Pos. 52R1E)



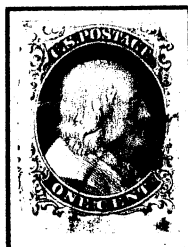
BLUE

Small curl in scroll at right end of upper label of left stamp



BLUE

Imperforate stamp cut into
rhomboid, or parallelogram, shape



Bruised plate
BLUE

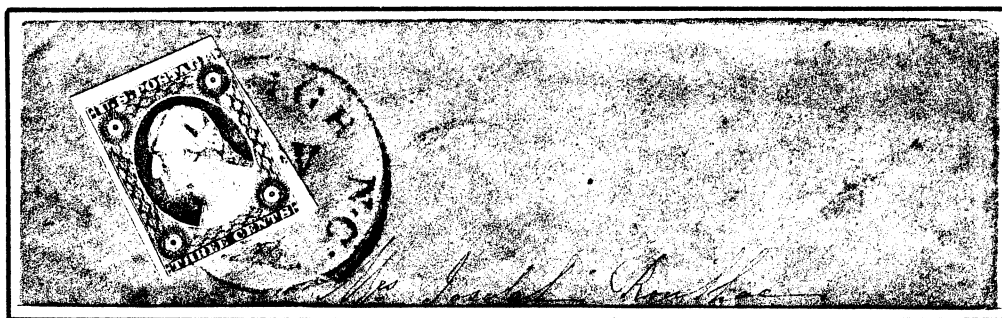


BLUE Ink smears BLUE

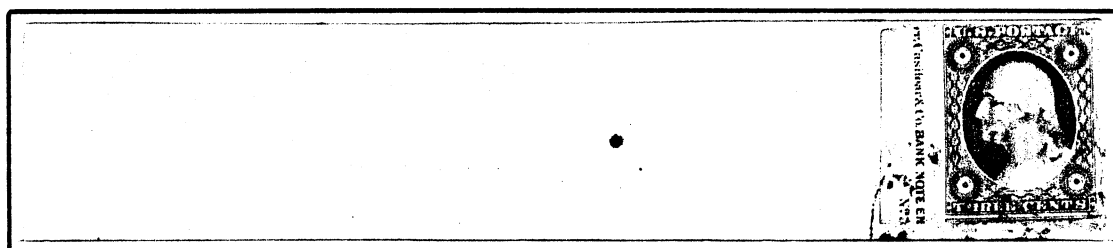


The "Ear ring"
(plate flaw)
BLUE

PLATINGS, VARIETIES, & OTHERS



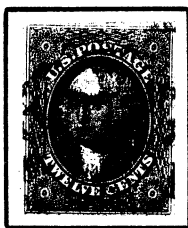
BLUE Recut plate (position 10R2L)
button outline has been recut



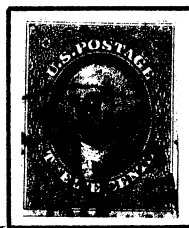
BLUE Plate number ("3") and imprint integral



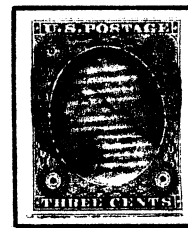
BLUE Manuscript
cancel



BLUE Part India
paper



BLUE Thin pelure
paper

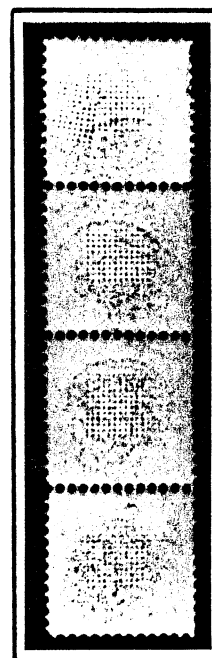
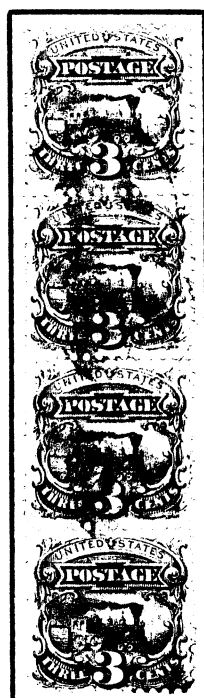


Stitch BLUE
watermark

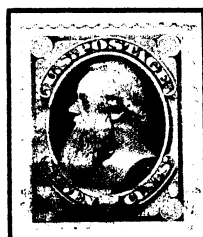


PURPLE Illegal overlap affixation
Prohibited because can obscure prior
cancel thus permitting re-use

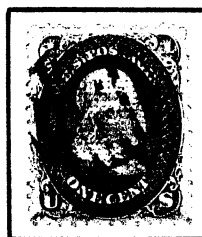
FREAK GRILLS



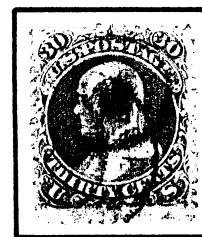
BLUE Double, one twisted, at top



RED End roller



BLUE Inverted grill, points up
(this type normally down)



RED Double, one split



BLUE Horizontally split



DOUBLE PURPLE



BLUE Vertically split

EXPERIMENTAL, and *T.L.C.

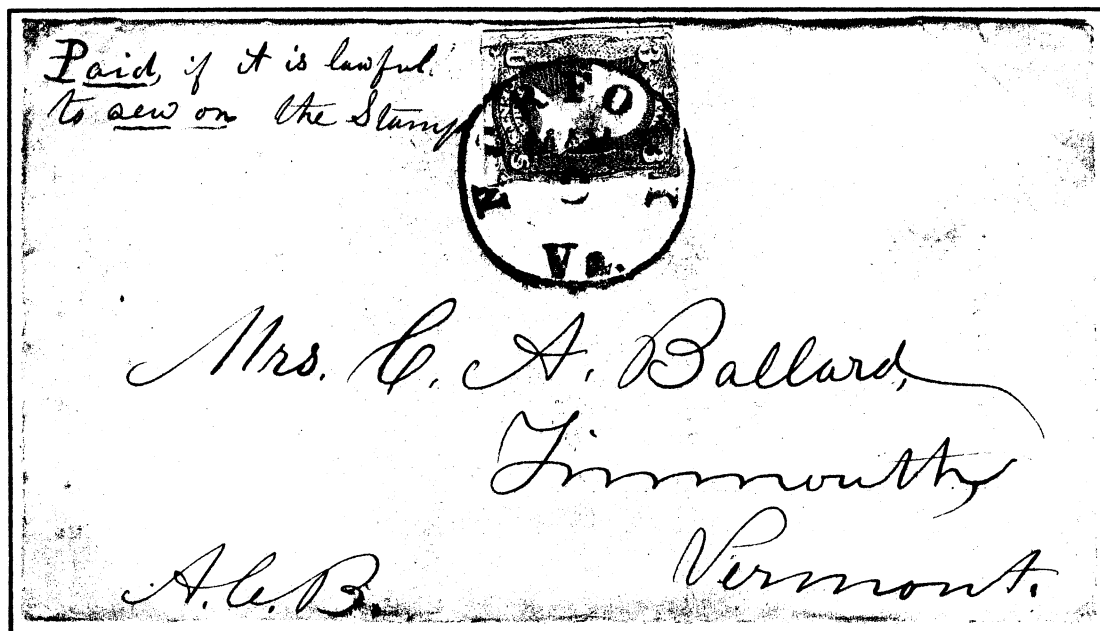
Experimental Cancel



BLUE

"CRESCENT/OCT/26/1875/N.Y."
(all in center of double circle postmark)

Postage Sewn Onto Cover



BLUE Uncancelled stamp, cut from another envelope and with perforations trimmed off, sewn by hand on here. "Paid if it is lawful to sew on the stamp", sender applied.

*Tender loving care

PLATINGS and VARIETIES



RED
Dropped relief (top stamp)



GREEN GREEN
Interior horizontal plate crack

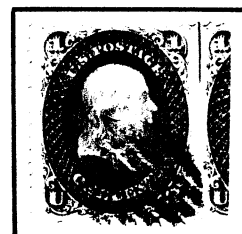


RED
Gutter snipe
at left

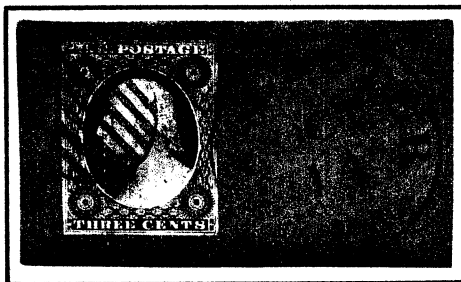


Normal
PURPLE

Worn plate
BLUE



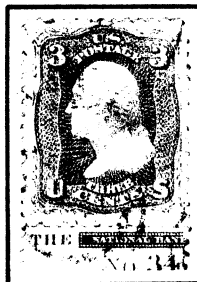
Gutter snipe
at right
BLUE



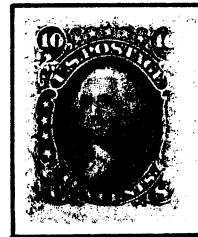
RED
Short transfer (at top)



BLUE
Essay grill, often mis-
taken for grilled all
over type "A" version

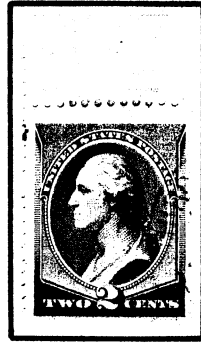


Contiguous
plate number



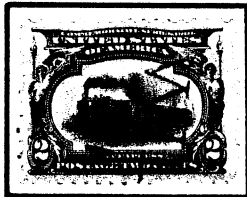
RED
Partial print -
impression incomplete
along right edge

SPECIALITIES



BLUE

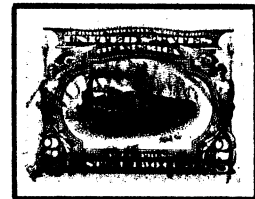
Special Printing
"THIRD (ASSISTANT P.M.G., P.O.D.)"



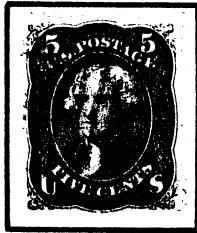
Normal vignette
registration
PURPLE



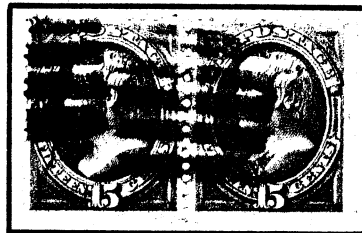
Precancel GREEN
Glen Allen, Va.



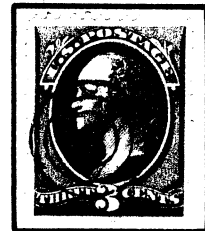
High vignette PURPLE
registration



Very thin paper
BLUE



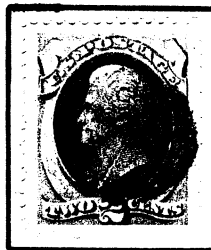
Vertical ribbed paper
BLUE



Laid paper
BLUE



Impression
offset on back
PURPLE



Jumbo
PURPLE



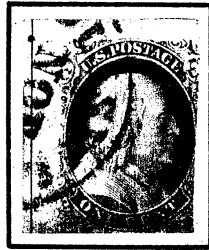
Two different
color cancels
BLUE/RED



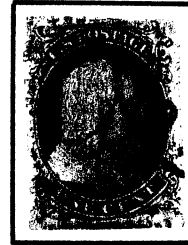
RED ("19")

U.S. used in the Confederacy
(Dated May 30, 1861, red "19"
is credit to Great Britain).

VARIOUS



Center guide
line & dot
BLUE



Private perforations
applied to imperforate stamps
by sewing machine *ptc*
RED



Red paint
cancel
RED



Plate flaw in neck
BLUE



Damaged plate
at left
BLUE

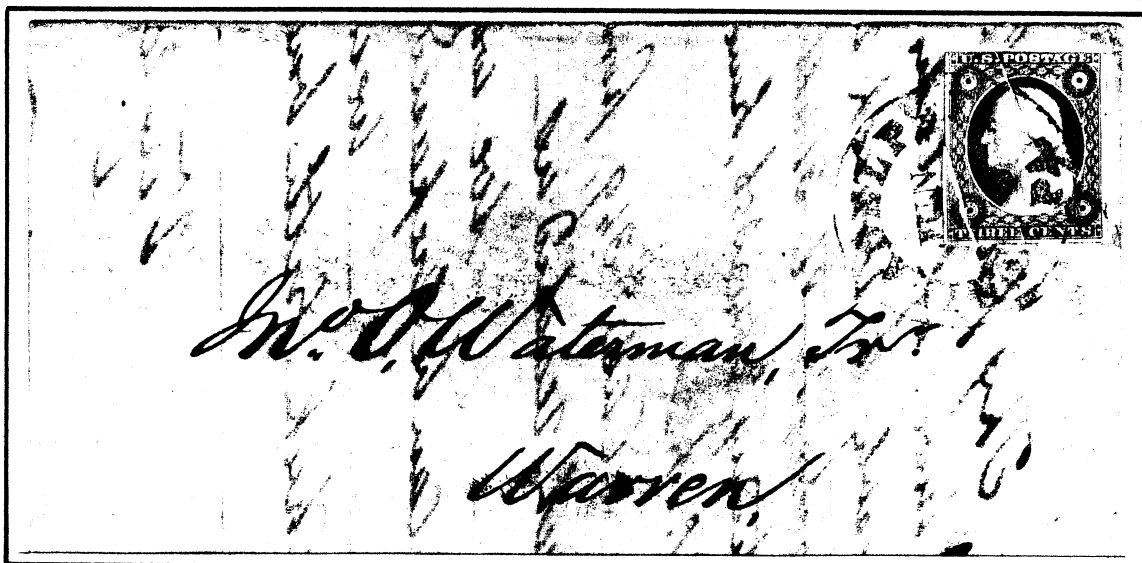
PRE-PRINTING PAPER CREASES



BLUE Vertical



BLUE Horizontal (two)

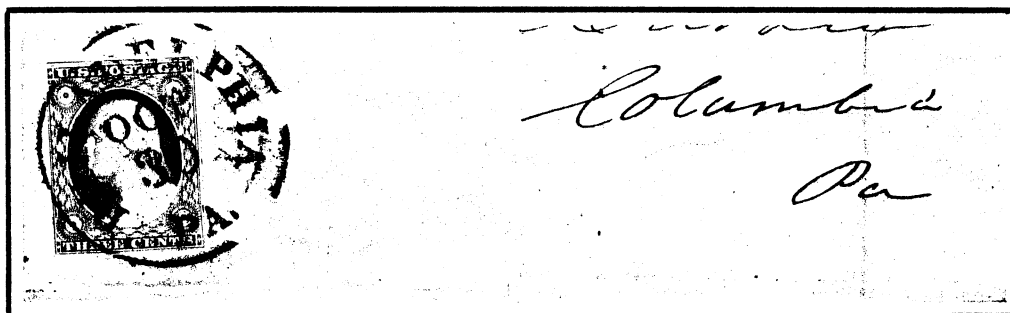


BLUE

Diagonal (three)

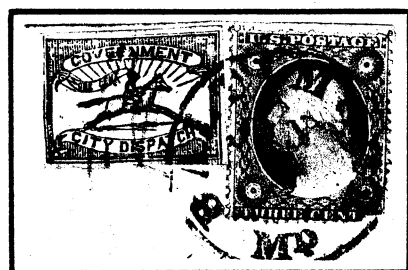
VARIOUS

Experimental Shade

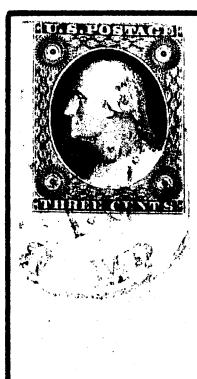


BLUE

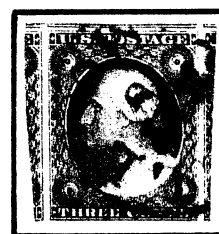
Originally issued in orange brown; plate number 1 saw extensive use, was recut in a number of positions. Stamp is position 38 after recutting, so is late plate usage, thus an "experimental" orange brown shade.



BLUE Used with
Baltimore Local

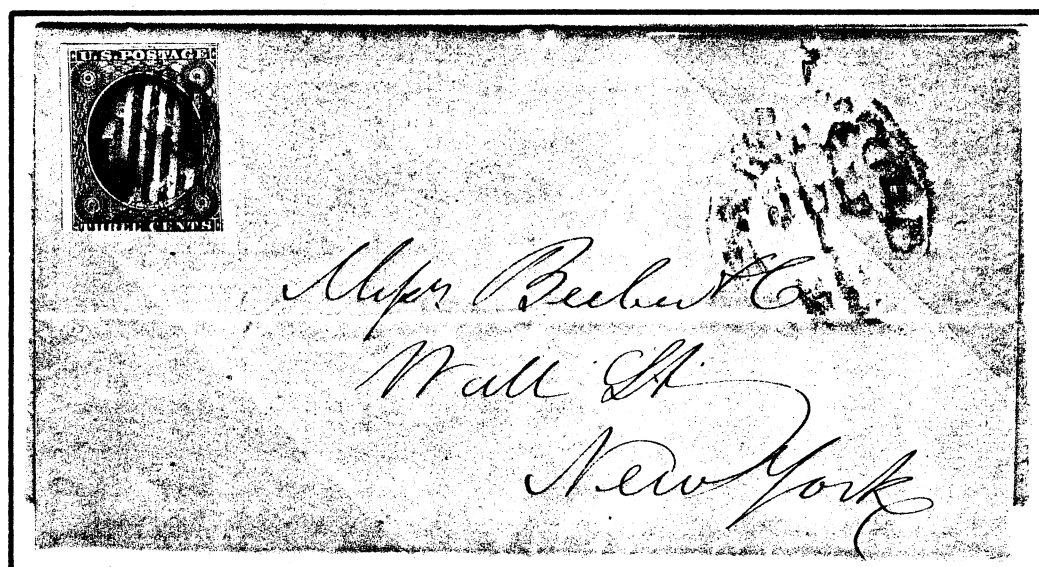


21mm selvage
(largest known)
BLUE



"Robber" copy
5 other stamps
included
BLUE

First Day Cover



MAGENTA

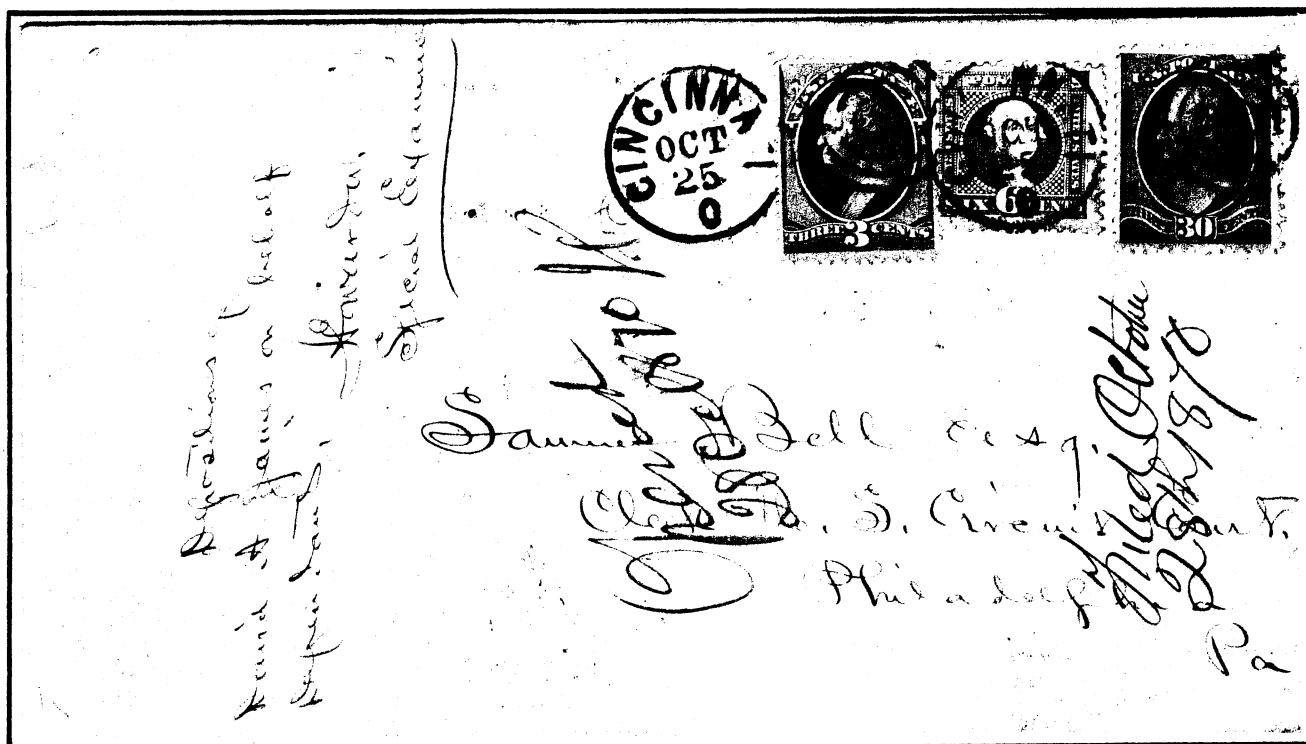
Cancelled Hartford, Conn, July 1, (1851, per date inside) first day stamp was on sale in post offices.

Foreign



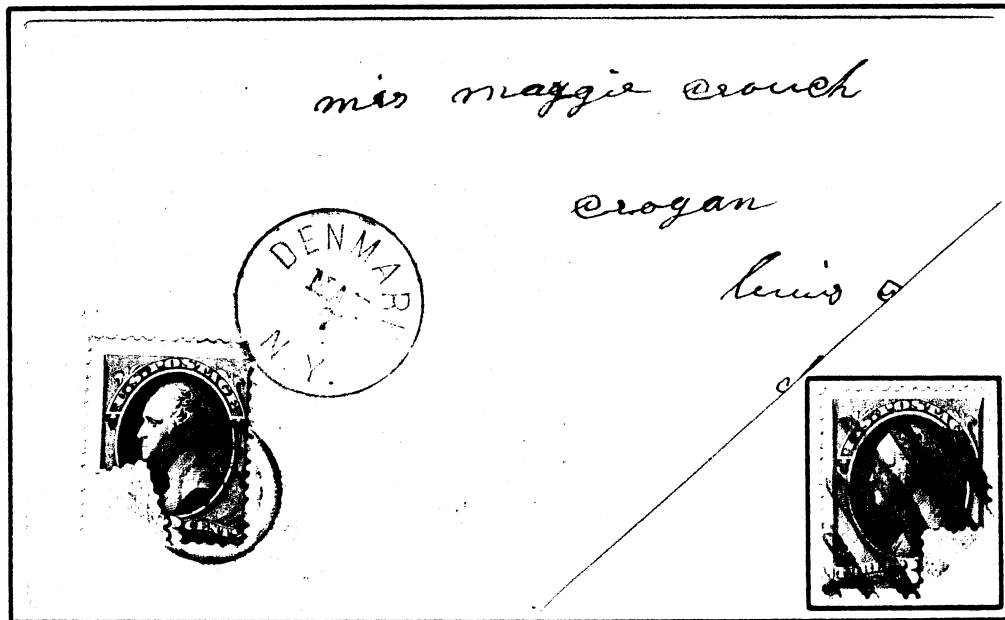
BLUE

Domestic



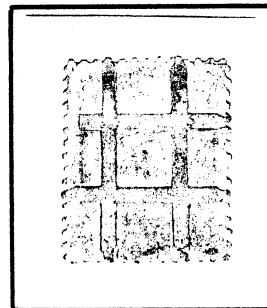
84

PATENT PROCESSES



BLUE

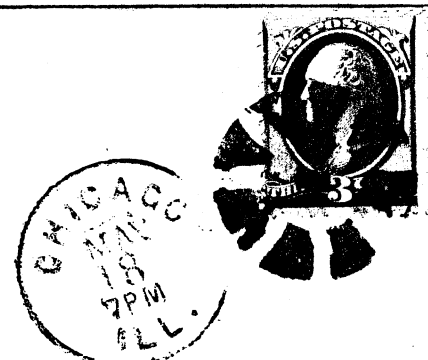
BLUE



BLUE

P7C

—BRANCH OFFICE—
United States Lab Association,
FAIRCHILD & BLACKMAN,
 DIRECTORS.
 Tribune Building, **CHICAGO, ILL.**
Return in 10 days if not delivered.



BLUE

Patents to thwart re-use of stamps. Top: double paper, cleaning destroys thin top layer; center: stamp, placed over lattice work cut out in envelope sticks to contents, is destroyed when letter removed; bottom: canceler punches holes in stamp to ensure penetration of ink into paper.

FREAK PERFORATIONS, FRAUDULENT USE



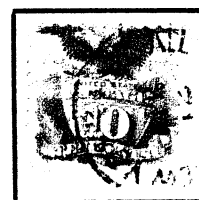
BLUE

Vertical zig-zag



RED

Vertical & horizontal
off center



RED

Horizontal off center



BLUE

Vertical off center



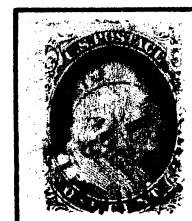
BLUE

Horizontal doubled



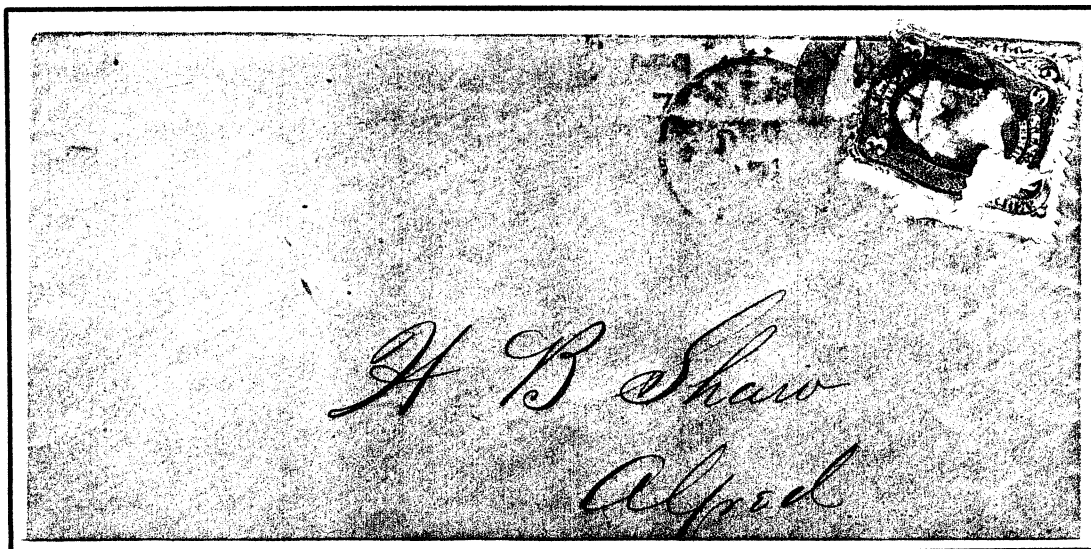
PURPLE

Partial doubling
of horizontal



RED

Vertical doubled



BLUE

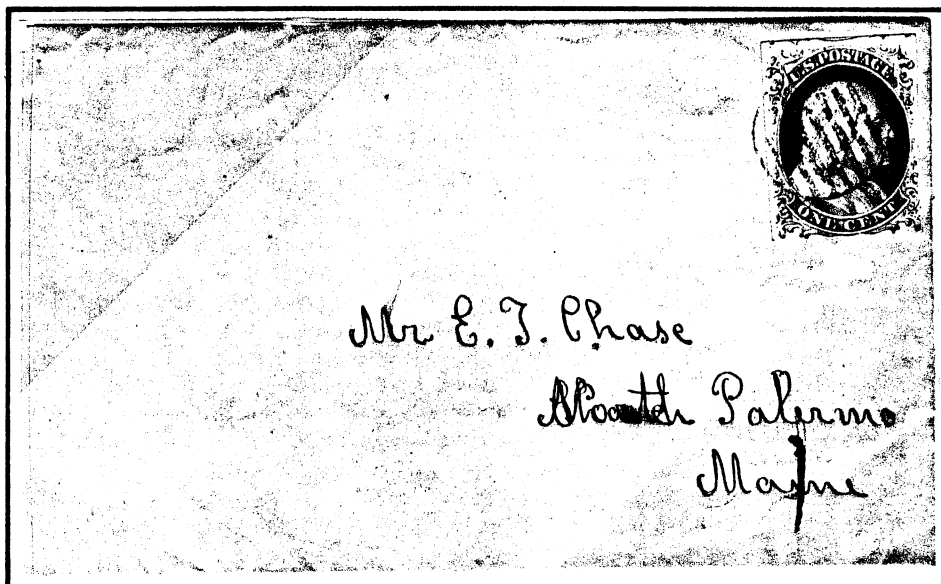
Attempted fraudulent use of a Revenue
stamp to pay First Class postage rate

Printed by Toppan, Carpenter, Casilear & Co.

1851-56

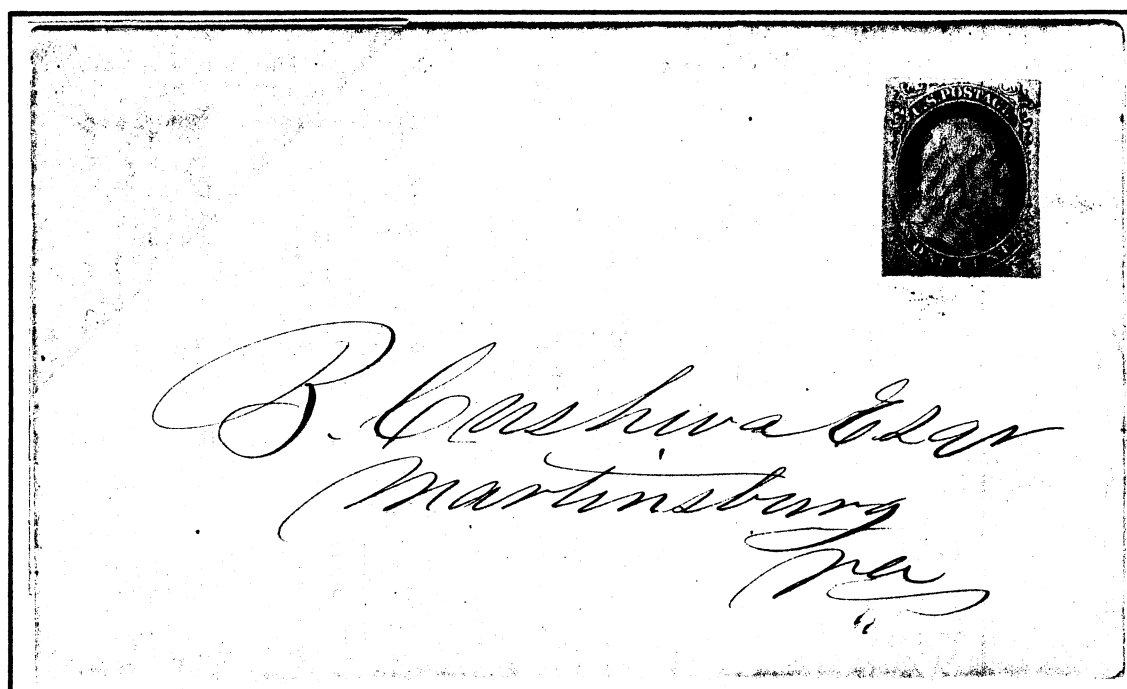
Imperforate

Dirty & Clean Impressions



BLUE

By early 1854 the plate from which these Type IV stamps were printed had become worn to the extent the impressions took on a "dirty" appearance, as in example below. The plate was removed from service and cleaned, thereby restoring the clear sharp impression as above, but at the same time exposing a great amount of wear to, and cracks in, the plate.



RED

Printed by the National Bank Note Co.

1869

First Pictorial Issue

Attempt at Faking



RED



RED



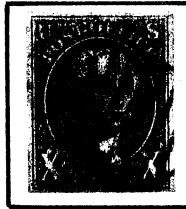
RED

Normal examples of stamp are at top. This is one of the three values of the first U.S. issue on which inverts occurred during production. The thirty cent is the scarcest and most valuable of the three, a fact which beckons the "faker".

Shown are two examples from which the red printed portion of the stamps has somehow been chemically removed, leaving the red cancels intact. Next step would have been to replace the red printing in an upside down position, resulting in an "invert", and a high five figure value.

How, when, or by whom, this first step in the faking process was completed is not known.

FORGERIES and FAKES



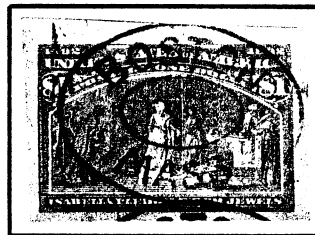
Jean de Sperati's only forgery
of a U.S. regular issue
RED



Perforations trimmed off to represent
a more valuable imperforate stamp
RED



Arrow at top left indicates this
originally a straight edge
RED



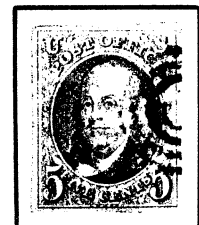
Stamp and cancel are forgeries
(never issued imperforate)
BLUE



Fake fancy cancel
GREEN (P7C)



Fake precancel
("G" for Glastonsbury, Conn)
PURPLE



Fake cancel
PURPLE



BLUE
Cardboard proof thinned down & perforated;
starburst cancel also fake